

INTER AND INTRASEROTYPE VARIATIONS OF STREPTOCOCCUS PNEUMONIAE PATHOGENICITY IN MICE AND RABBITS.

ABSTRACT

The small mammalian laboratory animalst he mice and the rabbits were tempted to be pathogenicity models for S.pneumoniaeserotypes,the infecting doses were 0.3ml for mice and 0.5 ml for rabbits.These infectious doses were rated to a count of 1×10^7 CFU/ml.The infection routes were intraperitoneal for mice and intranasal for rabbits.The gold standard criteria for pathogenicity were the death end point DEP.DEP was up to 24hr for mice and ranged from four to 14 days in rabbits.Mice was more susciptable than rabbits for S.pneumoniae serotypes infections.Autopsy cultures of blood,lungs,liver and kideys were producing same infecting serotype both from mice and rabbits.This isolation profile was indicating bacterimic state induced by infection.Different serotypes have shown different death end points duration time.There were inter and intraserotype variations in DEP.Moderate to severe respiratory disease conditions RDCwas noted in mice while mild RDC in rabbits.Both of the tested models were similar lung histology to man.The histological features of this experimental infections have shown that the infected mice and rabbits were of bronchopneumonia type.It appears that both mice and rabbits were standing as valid laboratory animal models for these local clinical isolates ofS.pneumoniae serotypes.

KEY WORDS

Bacteria, death, disease , end , infectious, point,respiratory.

INTRODUCTION

Bacterial eco-pathotype was showing variations in pathogenicity to laboratory animal models within the same pathogen species and /or serotypes.A theme proved right now both in man and small mammalian laboratory animals.Host health state ,age,nutrition, genetic makeup, and other environmental insults do affect variations in the pathogenic potentials of human pathogenic bacteria.Theseinflunces are smoothly true for the pathogenicity of S.penumoniae in man and laboratory animals[1-8].The objective of the present work was to report on an inter and intraserotype variations in pathogenicity of S.pneumoniae in mice and rabbits.

MATERIALS AND METHODS

1-S .pneumoniae :

Pneumotropic clinical isolates of S .pneumoniae serotypes were constituting the first author collection.The were revived from the storage media, inliquid encriched media and recharacterized to the serotype levels[9].

2-Mouse Pathogenicity Test[10]:

A volume of 0.3 ml of a broth culture from *S.pneumoniae* containing 1×10 to 7 CFU/ml . was injected intraperitoneally into mice. The injected mice were observed for the onset of respiratory signs over six hours. dead mice were eviscerated. Blood, lung, liver and kidney were collected both for re-isolation studies onto Gentomycin blood agar, growth were identified as in [11], and for histologic sections. Tissue blocks were processed for histology tissue sectioning and staining [12]

3-Rabbits Pathogenicity [13]:

A 24 hours trypton soy 5ml fresh broth culture was centrifuged at 2500 rpm for three minutes. Pellet Cells was washed with 10 ml saline. The cell count were ratified to 1×10 to 7 CFU/ml . Then ,0.5 ml doses were inoculated intranasal in rabbits in an upright position for 5 minutes. Inoculate rabbits were observed for the onset of respiratory signs over 24 hrs. post to the infection. The diagnostic infection criteria for pneumonia were; body temp, movement ,mouth foam, and breath rate. Re-isolation was made as in [11], and histologic section as in [12].

RESULTS

The onset of respiratory signs PS and the death end points DEP in mice and rabbits were indicating that mice were more vulnerable to infection with *S .pneumoniae* than rabbits, Table -1 . DEP for mice were up to 24 hours while that of rabbits were ranging from 4 to 14 days. There were an interserotype , Table -2 and intraserotype, Table -3 variations in pathogenicity of *S.pneumoniae* serotypes both in mice and rabbits. Mice have shown moderate to severe while rabbits have shown mild forms of respiratory disease . Applying Chockhs postulates on infected mice and rabbits, findings in , Table- 4 were confirming the pathogenicity of *S. pneumoniae* to man . Both of the gross , histology, Table – 5 , Fig. – 1 and Figure-2. The sections showed suppurative neutrophilic cell infiltration in lung paranchyma , alveoli , and intrabronchal lumen . These tissue reactions is consistent with brochopneumoniae rather than pneumonia. Re-isolation studies of the infections in mice and rabbits were indicating that these animals reaching bacterimic state of infection since the bacteria have been re-isolated from blood ,lungs, and liver. Hence they are valid models simulating brochopneumonia in man.

Table- 1 : Interserotype variations in *S.pneumoniae* in mice and rabbits

Serotype	Mice/IP/0.3ml. 1×10 to 7 DEP in hours	Rabbits/0.5ml./ 1×10 to 7 DEP in days
1	12	4
2,6,8	18-20	6-8
7	24	14

Table- 2 :Intraserotype variations in pathogenicity of S.pneumoniae serotype 6 in mice and rabbit.

Number of isolates	Mice/IP/0.3ml 1x10 to 7DEP in hours	Rabbit/IN/0.5ml 1x10 to 7,DEP in days
1	18	6
3	20	8
3	24	10
1	24	14

Table – 3 : Pathogenicity spectrum of S.pneumoniae serotypes in mice and rabbits.

Serotype	Disease in mice	Disease in rabbits
6	Moderate respiratory disease condition	Mild respiratory disease condition
1,2,8	Moderate to severe respiratory disease condition	Mild respiratory disease condition
3,4,5,7	Mild to moderate respiratory disease condition	Mild respiratory disease condition

Table – 4 : An autopsy reisolation culture studies for mice and rabbits infected with Serotype 1 and 6

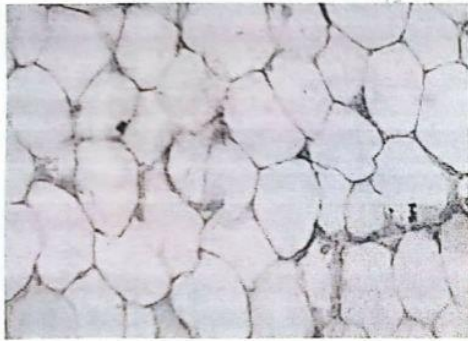
Infected animal	Blood	Lung	Liver	Kidney
Mice; 1 ,6	+	+	+	+
Rabbit; 1 , 6	+	+	+	+

Table-5 :Histologic features of mice and rabbit lungs infected with S.pneumoniae serotype 1.

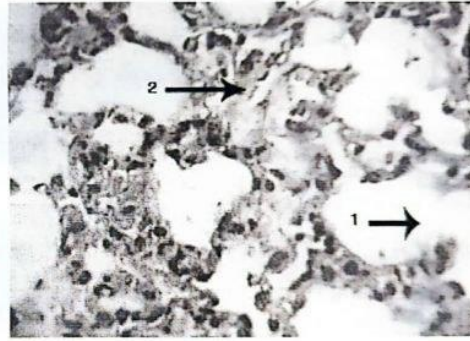
serotype	Animal	Dose	DEPduration time	Histologic features	Conclusion
1	Mice	0.3 ml,IP,1x10 to 7 CFU/ml.	12 hours	Neutrophilic infiltration in lung paranchyma,	Bronchopneumonia

				aveoli and intrabronchial inflammatory cells infiltration as compard to normal tissue contour in control	
1	Rabbit	0.5 ml ,intranasal,1x10 to 7 CFU/ml.	4 days	Neutrophilic infiltration in the lung paranchyma ,alveoliand ,intrabronchial inflammatory cell infiltration and debries. Aa compared to normal tissue contour in controls.	Bronchpneumonia

UNDER PEER REVIEW



C(480x)

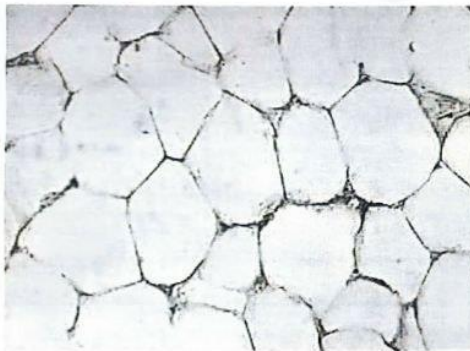


D(480x)

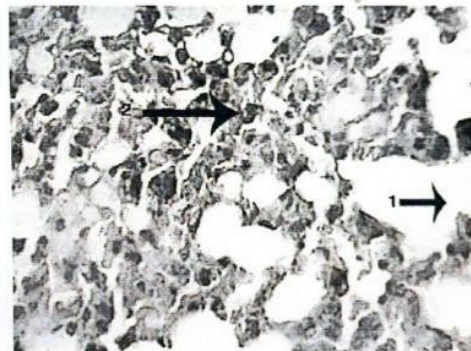
A mice lung control

B mice lung infected

Not labeled figure with numbers



C(480x)



D(480x)

A Rabbit lung control

B Rabbit lung infected

Figure – 1 ; The above : A-normal mice lung tissue archtichure B-Infected mice lung tissue showing 1- Inflammatory cell infiltrate in lung tissue paranchyma ,2- Intrabronchial inflammatory cell infiltrate. 1 and 2. Consistent with brochpneumonia..

Figure – 2 : The below :A Normal rabbit lung tissue archticture B-infected rabbit lung tisseshowing 1 – Inflammatory cell infiltrate in lung tissue paranchyma,2-Intrabroncheolar inflammatory cell infiltrate.1 and 2 consistent with bronchpneumonia.

DISCUSSION

Digging through the current literature all over the world have shown that *S.pneumoniae* does have multiple pathoserotypes[1-8]. There were serotype dependent pathogenic potentials[3,4,5]. The present communication was tempting to uncover an inter and intraserotype variations in pathogenicity to mice and rabbits Tables- 1-3. Mice have shown pneumonic disease similar to that of man with moderate to severe disease forms. The DEP of mice were 12 to 24 hours. While that of rabbits were ranging from 4 to 14 days. Such pathogenicity spectrum is rather similar to that of man[14]. Serotype -1 was reported to be the most virulent, Table- 5, than other serotypes this was inline with results of other workers. But serotype 6 was of low virulence[15-18]. Infection of mice and rabbits with *S.pneumoniae* were either producing lobar pneumonia or bronchopneumonia[19,20], results in table five fig- was indicating bronchpneumonia. Results in this experimental settings are being novel in this area.

CONCLUSIONS

Different *S.pneumoniae* serotypes have shown different pathogenicity spectrum. There were an inter and intraserotype variations in pathogenicity to mice and rabbits as indicated by DEP duration time. Disease picture rather simulating that of man. Mice and rabbits were proved as valid laboratory animals for pathogenicity of this pathogen in human.

REFERENCES

- 1-Wang HE, Touromousis P, Webster S et al. 2023. Naturally occurring serotype 3 of *Streptococcus pneumoniae* strains that lack functional pneumolysins and autolysins have attenuated virulence but induces localized protective immune responses. *Plos ONE* 13(3):e0282884. doi.10.1371/journal.pone.0282843.
- 2-Marquat ME 2021. Pathogenicity of *Streptococcus pneumoniae*: Cutting to chase on protease. *Virulence*, 12(1):766-787.
- 3-Xie Y-P, Li W, Fu Y, et al. 2021. Properties of mucoid serotype 3 *Streptococcus pneumoniae* from children in China. *Front. Infect. Microbiol.* 11. doi.10.3389/fcimb.2021..648040.
- 4-Jacques LC, Panagiotou S, Baltazar M, et al. 2020. Increased pathogenicity of pneumococcal serotype 1 is driven by rapid autolysis and release of pneumolysins. *Nat. Commun.* 11: Article number 1892.
- 5-Minhas V. 2020. Pathogenesis of *Streptococcus pneumoniae*; A molecular characterization. Ph.D Thesis. School of biological Sciences, University of Adelaide, Australia.
- 6-AL Najjar S, Sitthicaroenchai P, Gallup J et al. 2020. *Streptococcus pneumoniae* serotype 22F infection in respiratory syncytial virus infected neonatal lambs chances morbidity. *bioRxiv*. doi.10.1101/2020.6.9.142034 preprint.
- 7-Nyongesa WM. 2015. *Streptococcus pneumoniae*, Prevalence, Antibiotic and Associated Risk Factors Among Children Attending Gertrudes Childrens Hospital In Nairobi City Country Kenya. Ph.D Thesis in Medical Immunology in the School of Medicine, Kenyatta University.

- 8-Brooks LRK , Mias GI 2018. Streptococcus pneumoniae virulence and host immunity :ageing, diagnostics and prevention. *Front. Immunol.* 9:doi.10.3389/fimmu.2018.0.1366.
- 9-Tarja K , Esa R , Pentti U et al. 2004. Survival of Streptococcus pneumoniae, Hemophilus influenzae and Moraxella catarrhalis frozen in Skim milk-Tryptone-glucose-Glycerol medium . *J. Clin. Microbiol.* 42(1):412-414.
- 10-Sottile MI , Rytel WM. 1975. Application of counterimmunoelectrophoresis in the identification of Streptococcus pneumoniae in clinical isolates. *J. Clin. Microbiol.* 2 (3):173-177.
- 11-Dennesen PJ , Vander s N , Kessels AG . 2001. Resolution of Infectious parameters after antimicrobial therapy in patients with ventricular-associated pneumonia. *Am. J. Resp.* 163.:1371- 1375.
- 12-Bancroft Jd , Stevens A 1982. *Theory and Practice of Histological Techniques.* Churchill-Livingstone, New York, 117.
- 13-Nishimoto AT , Rosch JW , Tuomanen EI . 2020. Pneumolysins: Pathogenesis and therapeutic target. *Fron. Microbiol.* 11: 1543. doi.10.3389/fmicb.2020.01543.
- 14-Hausdorff WF Feikin DR , Kingman K , 2005. Epidemiological difference among pneumococcal serotypes. *Lancet . Infect. Dis.* 5 :83-93.
- 15-Al Annee SRJ , McGee L , Jackson D et al. Association of serotypes of Streptococcus pneumoniae with disease severity and outcome in adults: An international Study. *Clin. Infect. Dis.* 45 :46-51.
- 16-Garua J , Calbo E . 2007. Capsular types predicting patients outcomes in pneumococcal bacteremia. *Clin. Infect. Dis.* 45:52-54.
- 17-Alonso DE , Velasco AFM Verheul AMP et al. 1994. Epitope specificity of rabbit immunoglobulin G IgG elicited by pneumococcal type 23F synthetic oligosaccharide and native polysaccharide 23F Ig. *Infect. Immun.* 62(3):799-808.
- 18-Tarini NMA , Astawa NM , Sukramma DM et al. 2019. The histological features and bacterial counts after exposure to Streptococcus pneumoniae serotypes 2,3,4 , and 19F in lung of Balb/c mice. *Bali. Med. J.* 8(3):662-666.
- 19-Chiavolini D , Pozzi G , Ricci S. 2008. Animal models for Streptococcus pneumoniae diseases. *Clin. Microbiol. Rev.* 21(4):666-685.
- 20-Borsa N , Pasquale MG , Restrepo MI 2019. Animal models for pneumococcal pneumonia. *Int. J. Mol. Sci.* 20(17):4220. doi.10.3390/ijms.2017.4220.

UNDER PEER REVIEW