

**ARTIFICIAL SEED BIOASSAY FOR ASSESSING PIGEONPEA GENOTYPIC RESISTANCE TO *Callosobruchus chinensis***

**Commented [DMAL1]:** Suggesting improvised title to improve readability "Artificial Seed Bioassay for Assessing Genotypic Resistance of Pigeon Pea to *Callosobruchus chinensis*"

**ABSTRACT**

Pulse beetle, *Callosobruchus chinensis* is a significant pest of stored legumes, particularly pigeon pea (*Cajanus cajan*), causing substantial damage and economic losses. This study investigates the resistance of various pigeonpea genotypes to *C. chinensis* using artificial seeds in a controlled single-choice bioassay. Despite using seeds with different proportions of resistant and susceptible genotypes, no significant differences were observed in the beetle oviposition behavior. The findings suggest that factors other than nutritional content may influence bruchid resistance, emphasize the need for further research into specific phytochemicals responsible for resistance. This work has important implications for the development of more resistant pigeon pea cultivars.

**Keywords:** Pulse beetle; pigeon pea; genotypes; artificial seeds; oviposition.

**1. INTRODUCTION**

*Callosobruchus chinensis* commonly known as the cowpea weevil or bruchid beetle. It is a notorious pest of stored legumes, with pigeon pea (*Cajanus cajan*) being one of its primary hosts [1, 2]. *C. chinensis* has a widespread distribution particularly in tropical and subtropical regions, where it inflicts significant damage to stored legumes, including pigeonpea, chickpea, and cowpea [3]. *C. cajan* is a vital staple crop in many regions particularly in Asia and Africa, where it serves as a primary source of protein and essential nutrients for millions of people [4]. Its resilience to harsh environmental conditions makes it crucial for food security in these areas. The lifecycle of *C. chinensis* is closely tied to its host, as the female lays eggs on the surface of the seeds. Upon hatching the larvae burrow into the seeds, where they feed, develop, and eventually emerge as adults [5]. This process causes substantial damage to the seeds, reducing their viability, nutritional value, and marketability [6]. Pulse beetle is a 'niche generalist' in that it can infest seeds within pods. Its initial infestation occurs in the field before harvest and from there beetles are carried to store houses where the population can increase rapidly [7]. *C. chinensis* causes substantial quantitative and qualitative loss, manifested by seed perforation, reduction in weight, market value, and seed germination. About 10-40% of the total annual production valued as billions of US dollars are lost annually alone to *Callosobruchus* spp in tropical countries [8]. Traditional breeding methods for developing resistant cultivars have focused on general resistance traits, but these approaches often lack precision and may not be effective against specific pests like bruchids [9]. This limitation emphasizes the need for more targeted studies and advanced techniques to develop pigeonpea varieties with robust resistance, ensuring the sustainability and productivity of this essential crop. The use of artificial seeds in bioassay studies offers a controlled and reproducible method to investigate resistance mechanisms against pests like *C. chinensis*. By mimicking natural seeds while eliminating variables such as genetic and environmental factors, researchers can focus on specific traits influencing oviposition behaviour and pest resistance. The objective of this study is to evaluate the resistance of

**Commented [DMAL2]:** Briefly mention why pigeon pea is a critical crop (e.g., its nutritional value or economic significance), to strengthen the rationale for the study.

different pigeonpea genotypes to bruchid infestation, specifically focusing on *C. chinensis* using a single-choice bioassay with artificial seeds. This study holds significant implications for sustainable pest management, as it aims to identify key resistance factors that can be utilized in breeding programs, ultimately contributing to the development of pigeonpea varieties that are better equipped to withstand bruchid infestations in stored grains.

## 2. MATERIALS AND METHODS

### 2.1 Rearing of *Callosobruchus chinensis*

The *C. chinensis* was available in the storage laboratory, Division of Entomology, ICAR-IARI, New Delhi. The insect was reared in glass jars (15 x 10 cm) on pigeonpea seeds under controlled conditions of 27±2°C and 68±5% RH to maintain uniform culture. The freshly emerged adults were used for bioassay.

### 2.2 Preparation of artificial seeds

Preparation of artificial seeds (AS) by soaking the pigeon pea seeds namely, IPAB 18-21, ICPP171581, Pusa Arhar -16 and ICPP171112 in distilled water for about 1 hr. Seed coat was removed manually and the seeds were dried at 27°C for 48 h. The de-coated seeds were then ground into fine powder using pestle and mortar. Susceptible genotype ICPP171112 was mixed in different proportion with resistant cultivars to create different percentage of artificial seed. In the present study, above mentioned flour of resistant genotypes were thoroughly mixed with susceptible genotype ICPP171112 in 25%, 50%, 75% and 100% combinations (Table 1). One gram of de-coated pigeon pea flour was mixed with one percent Tween 80 (0.40 – 0.44 ml) and made into a fine paste. Later, the paste was converted into similar sized balls as that of pigeon pea seeds and kept in deep freezer for 12hrs. Further, AS was dried at 27°C temperature and 35 % RH for 1 week to equilibrate moisture content of AS with atmospheric levels. The average weight of the Artificial seed was 1.35 g (n = 15) in comparison with pigeonpea that weighed 1.46 g (n = 15) (Plate 1) [10, 11, 12].

**Commented [DMAL3]:** "One gram of de-coated pigeon pea flour was mixed with 0.40–0.44 ml of 1% Tween 80 to form a fine paste." This revision make the sentence clearer and more precise!

**Table 1. Proportion of pigeon pea genotypes used for single choice test screening against pulse beetle, *C. chinensis***

| GENOTYPES                            |
|--------------------------------------|
| 25% IPAB 18-21 + 75% ICPP171112      |
| 50% IPAB 18-21 + 50% ICPP171112      |
| 75% IPAB 18-21 + 25% ICPP171112      |
| 100% IPAB 18-21                      |
| 25% ICPP171581 + 75% ICPP171112      |
| 50% ICPP171581 + 50% ICPP171112      |
| 75% ICPP171581 + 25% ICPP171112      |
| 100% ICPP171581                      |
| 25% Pusa Arhar – 16 + 75% ICPP171112 |
| 50% Pusa Arhar – 16 + 50% ICPP171112 |
| 75% Pusa Arhar – 16 + 25% ICPP171112 |

|                      |
|----------------------|
| 100% Pusa Arhar – 16 |
| 100% ICPP171112      |

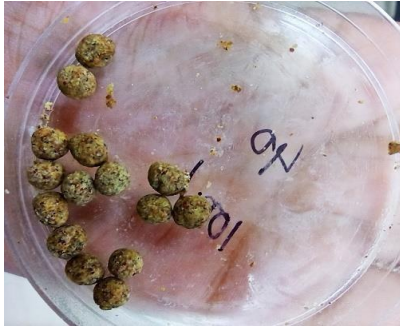


Plate 1. Bioassay with Artificial seeds

### 2.3 Single choice test:

Fifteen AS each from four genotypes were taken in separate plastic vials (6 x 4 cm) and three pairs of newly emerged adult *C. chinensis* were transferred into each vial and allowed for oviposition. The insects had no opportunity to select a preferred host and were compelled to exclusively feed on the seeds of a single genotype. The oviposition rate was recorded for every 24 hours until three days. To validate the susceptible or resistance reaction of each genotype, the experiment was repeated thrice.

Commented [DMAL4]: "from each of the four genotypes" rephrased it for improved readability

### 2.4 Statistical analysis

One way analysis of variance (ANOVA) was carried out by Tukey's Honest Significant Difference (HSD) test at  $P=0.05$  using SPSS 16.0 software. The means were compared based on the least significant difference (LSD) test at  $P=0.01$

## 3. RESULTS AND DISCUSSION

### 3.1 Evaluation of bruchid resistance using artificial seeds under 'single choice' test

Artificial seeds prepared with different proportion of de-coated flour from susceptible (ICPP171112) and resistant (IPAB 18-21, ICPP171581, Pusa Arhar-16) genotypes were exposed to freshly emerged adults of *C. chinensis* to determine their oviposition preference. It was observed that artificial seed does not influenced on egg laying behavior of bruchid, as there was no significant difference in number of eggs laid on these seeds except that higher number of eggs ( $21.67 \pm 1.53$ ) was recorded on susceptible genotype ICPP171112 (Table 2). We tried to validate the resistance mechanisms observed in resistant genotypes by preparing synthetic seeds but surprisingly we could not observed any significant difference in oviposition. This may be because the non-nutritional parameters could be influencing larval development rather than oviposition choice. This approach has also been demonstrated to identify resistance governing factors [12, 13]. Alkaloids and non-protein amino acids to be highly toxic to larval development [13]. Vicillins-like 7S storage proteins have been found in

the testa of various legumes and linked to seed resistance to herbivory [14,15, 16] ashave lectins, lectin-like  $\alpha$ -amylase inhibitors and arcelin [17]. It is also evident that several secondary metabolites are responsible for governing resistance against that may be working simultaneously against seed infesting insects [18]. For full understanding of resistance factors more in-depth studies are required on phytochemicals constituents of resistance and susceptible seeds which can be then exploited for developing resistant pigeonpea cultivars.

Commented [DMAL5]:

Commented [DMAL6]: Space between words required

**Table 2. Oviposition preference of *C. chinensis* from various combinations of artificial seeds made from resistant and susceptible pigeon pea genotypes**

| Genotype                           | No. of eggs/15 seeds           |
|------------------------------------|--------------------------------|
| 25% IPAB 18-21 + 75% ICPP171112    | 18 $\pm$ 3.00 <sup>ab</sup>    |
| 50% IPAB 18-21 + 50% ICPP171112    | 15.67 $\pm$ 2.31 <sup>ab</sup> |
| 75% IPAB 18-21 + 25% ICPP171112    | 13 $\pm$ 3.61 <sup>ab</sup>    |
| 100% IPAB 18-21                    | 16.33 $\pm$ 1.53 <sup>ab</sup> |
| 25% ICPP171581 + 75% ICPP171112    | 15 $\pm$ 4.36 <sup>ab</sup>    |
| 50% ICPP171581 + 50% ICPP171112    | 12.33 $\pm$ 2.08 <sup>ab</sup> |
| 75% ICPP171581 + 25% ICPP171112    | 11 $\pm$ 2.00 <sup>ab</sup>    |
| 100% ICPP171581                    | 10.67 $\pm$ 3.06 <sup>b</sup>  |
| 25% Pusa Arhar-16 + 75% ICPP171112 | 16.67 $\pm$ 2.08 <sup>ab</sup> |
| 50% Pusa Arhar-16 + 50% ICPP171112 | 13.67 $\pm$ 1.53 <sup>ab</sup> |
| 75% Pusa Arhar-16 + 25% ICPP171112 | 10.33 $\pm$ 0.58 <sup>b</sup>  |
| 100% Pusa Arhar-16                 | 15.67 $\pm$ 2.31 <sup>ab</sup> |
| 100% ICPP171112                    | 21.67 $\pm$ 1.53 <sup>a</sup>  |
| <b>F value</b>                     | 3.157                          |
| <b>P value</b>                     | <0.01                          |

Note: All values represent mean of three replications. Means in a column followed by different letter(s) are significantly different in all cases. Mean were separated by Tukey's Honest Significant Difference at  $p < 0.01$

#### 4. CONCLUSION

There was no significant difference in the oviposition behavior of *C. chinensis* on artificial seeds, regardless of the resistant or susceptible genotype. This suggests that factors other than nutritional content may influence the oviposition preference of the bruchid beetle. The findings highlight the need for further research into the specific phytochemical constituents that govern resistance in pigeonpea seeds. Ultimately, understanding these factors could lead to the development of more resistant pigeonpea cultivars, contributing to sustainable pest management strategies.

#### REFERENCES

1. Deng YX, Wang JJ, Zhao ZM, Liu H. Comparative biology of two geographical

- populations of the southern cowpea weevil, *Callosobruchus chinensis* (L.) (coleoptera: bruchidae) in southwest China. *Insect Sci.* 2003; 10: 257-264.
2. Mishra SK, Nag A, Naik A, Rath SC, Gupta K, Gupta A K, Panigrahi J. Characterization of host response to bruchids (*Callosobruchus chinensis* and *Callosobruchus maculatus*) in 39 genotypes belongs to 12 *Cajanus* spp. and assessment of molecular diversity inter se. *J. Stored Prod. Res.* 2019; 81: 76-90.
  3. Ghosal TK. Bio-ecology of pulse beetle, *callosobruchus spp* (coleoptera: Bruchidae) and potentiality of their safe management in storage at Terai agro-climatic conditions (Doctoral dissertation, University of North Bengal). 2003.
  4. Babarinde GO, Adeyanju JA, Ogunleye KY, Adegbola GM, Ebun AA, Wadele D. Nutritional composition of gluten-free flour from blend of fonio (*Digitaria iburua*) and pigeon pea (*Cajanus cajan*) and its suitability for breakfast food. *J. of Food Sci. and Tech.* 2020; 57: 3611-3620.
  5. Tripathi AK. Pests of stored grains. *Pests and their management.* 2018: 311-359.
  6. Pandey AK, Palni UT, Tripathi NN. Repellent activity of some essential oils against two stored product beetles *Callosobruchus chinensis* L. and *Callosobruchus maculatus* F.(Coleoptera: Bruchidae) with reference to *Chenopodium ambrosioides* L. oil for the safety of pigeon pea seeds. *J. of Food Sci. and Tech.* 2014; 51: 4066-4071.
  7. Rosemond T, Khan A. Resistance of selected pigeon pea, *C. cajan* cultivars to *C. maculatus* (Coleoptera: Bruchidae). *Legume Research-An International Journal.* 2013; 36: 563-568.
  8. Ukeh DA, Mordue AJ. Plant based repellents for the control of stored product insect pests. *J. Biopest.* 2009; 5: 1-23.
  9. Keneni G, Bekele E, Getu E, Imtiaz M, Damte, T, Mulatu B, Dagne K. Breeding food legumes for resistance to storage insect pests: potential and limitations. *Sustainability.* (2011); 3: 1399-1415.
  10. Shade RE, Murdock LL, Foard DE, Pomeroy MA. Artificial seed system for bioassay of cowpea weevil (Coleoptera: Bruchidae) growth and development. *Environ. Entomol.* 1986;15: 1286-1291.
  11. Kashiwaba K, Tomooka N, Kaga A, Han OK, Vaughan DA. Characterization of resistance to three bruchid species (*Callosobruchus* spp., Coleoptera, Bruchidae) in cultivated rice bean (*Vigna umbellata*). *J. Econ. Entomol.* 2003; 96: 207-213.
  12. Hudaib T, Brown S, Goodman AM, Eady PE. Efficacy of artificial seeds in the delivery of bioactive compounds to the seed dwelling larvae of *Callosobruchus maculatus* (Coleoptera: Bruchidae). *Arthropod-Plant Interactions.* 2013; 7: 527-533.
  13. Janzen DH. How southern cowpea weevil larvae (Bruchidae: *Callosobruchus maculatus*) die on nonhost seeds. *Ecol.* 1977; 58: 921-927.

14. Oliveira AEA, Sales MP, Machad OLT, Fernandes KVS, Xavier-Filho J. The toxicity of Jack bean (*Canavalia ensiformis*) cotyledon and seed coat proteins to the cowpea weevil (*Callosobruchus maculatus*). Entomol. Exp. Appl. 1999; 92:249-255.
15. Macedo MLR, Andrade LDS, Moraes RA, Xavier-Filho J. Vicilin variants and the resistance of cowpea (*Vigna unguiculata*) seeds to the cowpea weevil (*Callosobruchus maculatus*). 1993.
16. Souza AJ, Santos PO, Pinto MS, Wermelinger TT, Ribeiro ES, Souza SC, Oliveira E A. Natural seed coats provide protection against penetration by *Callosobruchus maculatus* (Coleoptera: Bruchidae) larvae. Crop Prot. 2011; 30:651-657.
17. Ishimoto M, Sato T, Chrispeels MJ, Kitamura K. Bruchid resistance of transgenic azuki bean expressing seed  $\alpha$ -amylase inhibitor of common bean. Entomol. Exp. Appl. 1996; 79:309-315.
18. Bekele J, Hassanali A. Blend effects in the toxicity of the essential oil constituents of *Ocimum kilimandscharicum* and *Ocimum kenyense* (Labiatae) on two post-harvest insect pests. Phytochemistry. 2001; 57: 385-391.