

## Impact of germinated off season sorghum dietary on apparent digestibility and small intestinal histology of broilers in the town of Maroua in the Far North of Cameroon

~~Apparent digestibility (Da) of feed rations containing different levels of incorporation of germinated off season sorghum in broilers from start up to finishing in the town of Maroua in the Far North of Cameroon.~~

### ABSTRACT

With a view to finding a solution to maize in the composition of poultry feed, a study was conducted to evaluate the effect of the substitution of maize by germinated off-season sorghum as an alternative energy source on the growth performance nutrients digestibility and physiological response histological of small intestinal of broilers. ~~at start up.~~ To achieve this, 180 of the 1-day-old chicks of the "Cobb 500" strain with a live weight of  $34 \text{ g} \pm 3.26$ , were randomly divided into 9 batches corresponding to ~~03~~ treatments with ~~03~~ replicates of 20 subjects. The batches were subjected to one of ~~03 feed rations diets~~: 100% maize (R0), 50% maize and 50% germinated off-season sorghum (R1) and 100% germinated off-season sorghum (R2). To achieve these objectives at 18 and then at 35 days of age, a total of 36 broilers were used, i.e. 18 in the start-up phase at a rate of ~~06~~ subjects per treatment and 18 in the growth/finishing phase at a rate of ~~06~~ subjects per treatment and the droppings and feed from digestibility trials; measured apparent digestibility (Ad) for energy, protein, fiber, mineral matter and organic matter; histological studies of the small intestine were performed. Energy, organic matter, mineral matter, proteins and fibres were not significantly influenced by the experimental rations diets used at the 0.05% threshold for digestibility and the histological sections did not show any structural and morphological alterations. We can therefore conclude that maize can be substituted at 50% and 100% by germinated off-season sorghum without negatively impacting digestibility in broilers at the start, as well as in growth/finishing.

**Keywords:** Broilers, off-season sorghum, broiler, digestibility ~~and digestibility cage.~~

**Commented [D1]:** In poultry named diets not ration

**Commented [D2]:** These results are not correct, plz, double check of statistical analysis and P-value then tabled the data and significant letters then rewrite the results

## I- Introduction

In developing countries, poultry production is one of the main sources of animal protein supply for the population. The lack of animal proteins in the world is a real problem that several countries have to face in the fight against the food deficit. In Africa, about one in four people remains undernourished (FAO/IFAD and WFP, 2014). The poultry sector, particularly modern poultry farming, has emerged in recent years as an attractive solution to compensate for the ever-increasing demand for animal-based protein (FAO, 2018). This sector occupies a prominent place in the livestock sector in Cameroon because of the short breeding cycle of the species that make it up, its low price, the ease of its production, and its nutritional qualities. Poultry farming is a source of income for women and households (Issa et al., 2012). The development of the poultry sector has an important role to play in the fight against food insecurity in Africa in general, and in Cameroon in particular (Mingoas et al., 2017). Poultry farming in Cameroon has evolved over the years, from 37800 tons in 2020 to 52.6% tons in 2021 of the 270000 tons of meat produced during the same year. In 2022, the proportion of poultry in meat production in Cameroon increased by 7% compared to 2021 when poultry meat production was 42369 tons, reflecting a slow increase in poultry production (INS, 2023), for the year 2023 poultry meat production was about 107680 tons. However, the development of poultry farming is limited by the availability and quality of feed. In addition, the high cost of feed remains a major obstacle to the profitability of poultry production and represents 60 to 70% of the total cost of feed production (Teguia et al., 2004; Diarra and Devi, 2015). Indeed, feed is the first element involved in the cost price of poultry and is the most effective way to control production costs and meat quality. However, many feed ingredients commonly used in poultry feed are often out of stock due to food competition between humans and animals (Dahouda et al., 2009; Pomalégni et al., 2017; Tadondjou et al., 2022). Maize imports in Cameroon were around 64.4% in 2022, these imports have risen again during the year 2023, reaching 39991.3 tons (INS 2023) and therefore the inflation of the cost on the market, is increasingly slowing down the development of the poultry sector (Amougou et al., 2013; Tchuenga et al., 2017). In addition, the importation of inputs at very high prices leads to broiler production at prices beyond the reach of the population (Beghoul, S. 2015; Kouakou et al., 2019). To reduce the cost of production due to the increases in the cost of conventional raw materials, research is directed towards alternative feed resources that can reduce dependence on corn and main ingredients such as soybean meal, fish meal...etc in

**Commented [D3]:** Insert it in references list plz

**Commented [D4]:** Where is a year??

**Commented [D5]:** Insert it in references list.

**Commented [D6]:** Also, this references not found in references list, insert it.

**Commented [D7]:** Where the reference for this sentence??

**Commented [D8]:** Insert it in references list

**Commented [D9]:** Insert it in references list

**Commented [D10]:** This et al OR Tchuenga and Saha (2017), double check plz

poultry feed (Métayer et al., 2019; Akadiri et al., 2022). The Sahelian zone has large quantities of alternative food resources to maize, including off-season sorghum, which is widely used in the feed of poultry in traditional farming. Studies on the use of this variety in broiler feed remain scarce. The objective of this work is therefore to evaluate effect of germinated off-season sorghum as alternative energy source on nutrient digestibility and histology of small intestinal of broilers.

Commented [D11]: Insert reference

~~the digestibility of feed rations containing germinated off season sorghum used as an energy source in broilers in the start up phase and then in the growth/finishing phase.~~

Formatted: Indent: First line: 0"

## II- Materials and methods

### II. 1. Study Area

The experiment was carried out from June to August 2022 in the city of Maroua, located at 10°35'N latitude, 14°19'N longitude and 384m altitude in the Far North region of Cameroon. ~~The experiment was carried out from June to August 2022 in the city of Maroua, located at 10°35'N latitude, 14°19'N longitude and 384m altitude in the Far North region of Cameroon.~~ The climate is tropical of the Sahelian type and includes two main seasons: a dry season (October-January) and a rainy season (June – September). ~~The climate is tropical of the Sahelian type and includes two main seasons: a dry season and a rainy season.~~ The rainy season lasts three months (June-September) with an average rainfall of 700 millimeters per year. ~~The rainy season lasts three months (June-September) with an average rainfall of 700 millimeters per year. The dry season lasts nine months (October-May) and includes a relatively cool period (October-January) and a hot period (February-May) with variable temperatures. The temperature was peak at 45°C in hot periods and average around 25°C in the cool season, 30°C in the rainy season and peak at 45°C in hot periods~~ (Banga et al., 2019).

### II. 2. Animal material

A total sample of 180 day-old chicks of Cobb 500 strain, obtained from the AGROCAM hatchery in Ngaoundere with an average weight of 35g  $\pm$  3.26, was used. On arrival, the chicks were subjected to a routine check, including the condition of the legs, beak and liveliness. They were each given glucose water enriched with lemon and then they received an anti-stress to prevent possible effects related to transport stress. The ~~animals-chicks~~ were raised in the same

building on wood chip bedding on the floor; in compartments with a density of 8/m<sup>2</sup> under the same environmental conditions. The ~~animals-chicks~~ were given water and feed ad libitum in accordance with the recommendations of the ethics committee. ~~The experimental period lasted 00000.~~

Commented [D12]: Write how long the experiment look

### II. 3. Experimental design

The chicks were randomly assigned without sexing into three batches of 60 chickens each. Each batch was randomized into ~~three-3~~ repeats of 20 subjects each. Batch 1 or R0 treatment consisted of birds fed only ~~on a ration diet~~ where the maize substitution rate was 0%; batch 2 or R1 treatment consisted of birds fed ~~only on a ration diet~~ where the rate of substitution of ~~50% of maize in R0~~ by sprouted sorghum ~~was 50% and in the end~~ batch 3 or R2 treatment consisted of birds fed ~~only on a ration diet~~ where the rate of substitution of ~~100% of maize in R0~~ by sprouted sorghum was ~~100%~~. For digestibility, the chickens in the start-up phase as well as those in the finishing phase were installed in an experimental random block device consisting of ~~05~~ metabolic ~~cells-cages~~ at the rate of one chicken per experimental unit. A total of 36 Cobb 500 broilers were used, 18 in the start-up phase at a rate of ~~06~~ subjects per treatment and 18 in the ~~growthgrower/finishing-finisher~~ phase at a rate of ~~06~~ subjects per treatment. Each experimental subject was individually housed in a metal cage measuring 45 cm x 30 cm x 45 cm which ~~thanks to its grids,~~ allows a good collection ~~and a collection~~ of total droppings without contamination. This experimental device is also equipped with a feeder and a drinking trough. The subjects of the different batches received one of three experimental ~~rationsdiets~~, the water was served ad libitum. The quantities of feed fed according to needs, age and leftovers were weighed per chicken. Droppings were collected by chicken during the stay in the metabolic case. The use of sterile aluminum foil sheets made it possible to take samples under conditions that limited the risk of contamination of the samples. The samples of manure collected were kept in the refrigerator to carry out chemical analyses.

### II. 4. Analysis of ~~experimental diets and droppings and rations~~

The samples of lyophilized droppings and the 3 experimental ~~rations-diets~~ were all scanned on the same spectrometer in reflectance mode, on the powdered samples (grinding = 1

mm) presented in cups. Each sample was passed twice and spectra were averaged. The wavelengths used in the analysis range from 800 to 2500 nm with a step of 2 nm. The visible wavelengths (400-800 nm) did not contribute anything to the models and were therefore discarded. The spectra were then subjected to mathematical pre-processing (second derivative, normalization, smoothing and baseline correction). The same pretreatment was applied to all spectra. For each manure spectrum, the spectrum of the corresponding food was associated, resulting in a concatenated spectrum with the two signals one after the other. (Bourdillon et al., 1990; Métayer et al., 2015). Apparent digestibility (Da) corresponds to the share of nutrients that disappear in the intestine, it is calculated using the following formula :

$$\text{Ad (\%)} = \frac{\text{quantity of nutrient ingested} - \text{quantity of nutrient excreted}}{\text{quantity of nutrient ingested}} \times 100$$

## II. 5- Experimental rations

The rations-diets were formulated from different ingredients purchased from the city's feed mills. Some ingredients such as concentrate, lysine and methionine have been used based on the nutritional characteristics indicated on the labels. Other ingredients such as off-season sorghum, maize, groundnut meal and maize bran were analysed. A 100 g packet of each of these ingredients was sent for bromatological analysis to the Animal Nutrition and Feed Laboratory of the Faculty of Agronomy and Agricultural Sciences of the University of Dschang (FASA).

Table 1: Chemical composition of off-season sorghum, maize, groundnut meal and maize bran.

Samples	Dry matter (%)	Organic matter (% MS)	Crude protein (% MS)	Raw cellulose (% MS)	Fat (% MS)	Gross energy (Kcal/kg MS)	Metabolizable energy (Kcal/kg MS)
Corn bran	90.90	92.38	1.20	7.80	4.30	4220	2460
Groundnut cake	95.62	93.52	37.68	11.15	13.32	5201.18	3422.45
Corn	95.05	98.49	7.98	3.41	3.68	4400.15	3787.72

Commented [D13]: off-season sorghum or sprouted sorghum??????? Plz correct it

Commented [D14]: Maize or corn plz, double check your manuscript

Commented [D15]: Maize or corn

Commented [D16]: What the means of MS

Commented [D17]: Corn or maize

Commented [D18]: Corn or maize



Corn	40	20	00
Sound	15	15	14.50
Sprouted sorghum	00	20	40.50
Groundnut cake	37.50	37.50	37.50
5 % concentrate*	5	5	5
Bone powder	1	1	1
Shell	1	1	1
Kitchen salt	0.20	0.20	0.20
Lysine	0.15	0.15	0.15
DL-Methionine	0.15	0.15	0.15
Total	100	100	100
<b>Calculated nutritional values chemical analysis</b>			
Crude protein (%)	20.77	20.87	20.87
Metabolizable energy (Kcal/kg DM)	3253.74	3250.38	3254.54
Energy / Protein	156.28	155.76	155.92

**Commented [D22]:** What this?? What the meaning of Sound!!!!!!

**Formatted:** English (United Kingdom)

**Formatted:** English (United Kingdom)

**Formatted:** English (United Kingdom)

⌘

**Commented [D23]:** Write here the named of ingredients and percentage for each one in the mix concentrate

**Table 3: Percentage of ingredients Centesimal and nutritional composition of experimental rations-diets of broilers in-at the growth/finishing phase.**

Ingredients	Corn-based feed	Corn and sorghum sprout feed	Sprouted sorghum feed
	<b>Ration-diet</b>	<b>Ration-diet R<sub>1</sub></b>	<b>Ration-diet R<sub>2</sub></b>

	R <sub>0</sub> (%)	(%)	(%)
Corn	42.5	21.25	00
Sound	15	14.75	14.50
Sprouted sorghum	00	21.25	43
Groundnut cake	35	35	35
5 % concentrate*	5	5	5
Bone powder	1	1	1
Shell	1	1	1
Kitchen-salt	0.20	0.2	0.20
Lysine	0.15	0.15	0.15
DL-Methionine	0.15	0.15	0.15
Total	100	100	100

Commented [D24]: What this???

<del>Corn</del>	<del>Calculated</del>	<del>Calculated chemical analysis</del>	<del>nutritional values</del>
Sound	18.85	19.05	18.95
Sprouted sorghum	3150.4565	3180.3301	3158.65
Groundnut cake	167.13	166.94	166.68

Commented [D25]: What this ?? please correct it

Commented [D26]: What this??? Correct it

Commented [D27]: What this

% : percent.

Commented [D28]: Write here the named of ingredients and percentage for each one in the mix concentrate

Commented [D29]: What is it mean????

Formatted: Font: Arial Narrow, 12 pt

Formatted: List Paragraph

## II . 6. Statistical analysis of the data

Concerning the digestibility test, the ANOVA was carried out on ~~Apparent apparent Digestivity digestivity~~ (Ad) ~~Proteinsproteins~~, ~~Organic-organic Matter-matter~~ (OM), ~~Mineral-mineral Matter matter~~ (MM), ~~Fibres-fibres~~ and ~~Energyenergy~~. The sources of variation considered were ~~rations~~ ~~diets~~ containing germinated off-season sorghum and maize; these were presented as a mean  $\pm$  standard deviation. Analysis of variance using Graphpad Sprint 5 software was used to test the effect of different ~~rations-diets~~ on digestibility. The comparison of the means was made using the Tukey test at the 5% threshold.

## III. Results

### III.1. Effects of rations at different levels of incorporation of germinated off-season sorghum on apparent digestibility at start-up.

Table 4 presents the values of apparent digestibility (Ad) in broilers subjected to the three rations in the start-up phase. It appears that energy, organic matter, mineral matter, proteins and fibers were not significantly influenced by the experimental rations used at the 0.05% threshold.

**Table 4:** Apparent digestibility ~~in~~ of nutrients for broilers fed diets containing ~~broilers~~ ~~fed rations at~~ different levels of ~~incorporation of~~ germinated off-season sorghum ~~at starter phase~~

	Apparent digestibility at startup								
	R0 100% Maize			R1 50%			R2 100% Sorghum		
	Feed	Droppings	Ad	Feed	Droppings	Ad	Feed	Droppings	Ad
<b>Proteins (%)</b>	23.53± 0.33	18.34± 0.43 <sup>b</sup>	0.27± 0.12 <sup>b</sup>	22.97± 0.59	17.87± 0.09 <sup>b</sup>	0.28± 0.22 <sup>b</sup>	22.75± 0.13	17.37± 0.13 <sup>b</sup>	
<b>OM (%)</b>	54.36± 0.53	33.16± 0.63 <sup>b</sup>	0.63± 0.36 <sup>b</sup>	56.18± 0.32	36.08± 0.12 <sup>b</sup>	0.55± 0.41 <sup>b</sup>	52.62± 0.29	32.32± 0.52 <sup>b</sup>	
<b>MM (%)</b>	33.79± 0.54	30.94± 0.15 <sup>a</sup>	0.08± 0.19 <sup>a</sup>	32.51± 0.67	30.65± 0.49 <sup>a</sup>	0.06± 0.23 <sup>a</sup>	36.89± 0.26	34.38± 0.72 <sup>a</sup>	0.073± 0.1 <sup>a</sup>
<b>Fibers (%)</b>	33.21± 0.82	31.32± 0.64 <sup>a</sup>	0.06± 0.67 <sup>a</sup>	32.79± 0.86	31.17± 0.54 <sup>a</sup>	0.05± 0.72 <sup>a</sup>	31.68± 0.73	30.27± 0.44 <sup>a</sup>	0.046± 0.51 <sup>a</sup>
<b>Energy (kcal/kg)</b>	3287.37± 0.65	3015.43± 0.51 <sup>a</sup>	0.095± 0.48 <sup>a</sup>	3300.01± 0.72	3002.01± 0.27 <sup>a</sup>	0.099± 0.32 <sup>a</sup>	3291.92± 0.82	3024.41± 0.65 <sup>a</sup>	

Values with the same letter on the same line are not significantly different at the 5% threshold. OM (organic matter); MM (mineral matter); Da (apparent digestibility).

### III.2. Effects of rations at different levels of incorporation of germinated off-season sorghum on the intestines of broilers.

Figure 1 shows the effects of the different rations on the architecture of the small intestine of broiler chickens in the start-up phase. Indeed, compared to the R0 control, the histological sections did not show any structural and morphological alterations R1

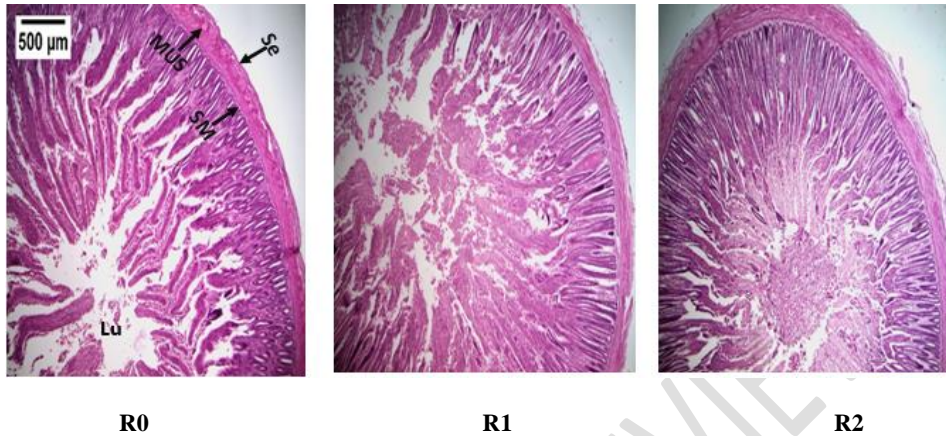
**Commented [D30]:** All significant letter put in here not correct. You said the comparison in same line but you put the different letters in same Colum , this is big mistake in results ..Plz double check

**Commented [D32]:** The digestibility of protein range between 75-80% in poultry...this values not correct

**Commented [D31]:** This full stop not comma Plz correct it in all number in here

**Commented [D33]:** As metabolizable energy or digestible energy, define it

**Commented [D34]:** How this??? metabolizable energy in here not correct, plz double check



*Lu = Intestinal lumen; SM = Submucosa; Mus = Muscularis; Se = Serosa.*

**Figure 1: Histological sections of the small intestine of chickens in the starter phase**

### **III. 3. Effects of rations at different levels of incorporation of sprouted off-season sorghum on apparent digestibility during growth/finishing.**

Table 5 shows the apparent digestibility (Ad) values for broilers fed the three rations during the growth/finishing phase. It can be seen that energy, organic matter, mineral matter, protein and cellulose were not significantly influenced by the experimental rations used at the 0.05% threshold.

**Table 5: Apparent digestibility of nutrients for broilers fed diets containing of broilers fed rations with different levels of sprouted off-season sorghum incorporation at grower and finisher phases**

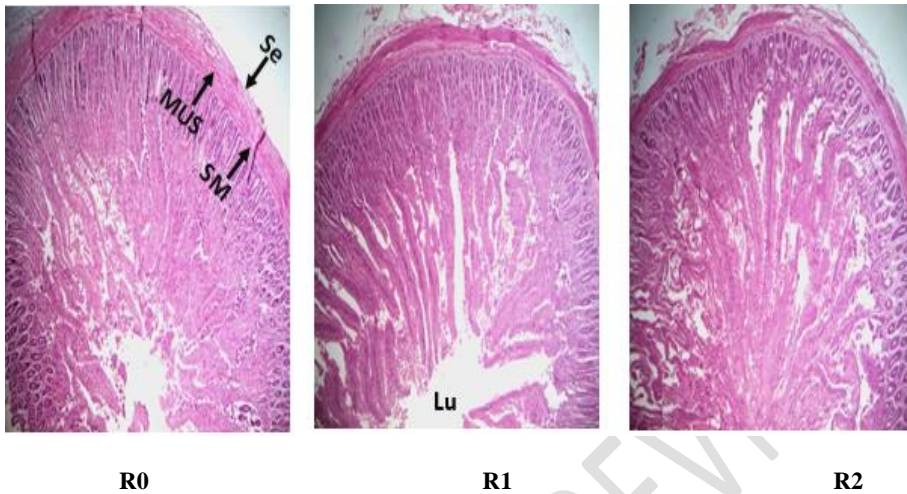
**Commented [D35]:** All required modification in this table are same as in Table 4, Plz, do it carefully and accurately

Apparent digestibility in growth/finishing									
	R0 100% Maize			R1 50%			R2 100% sorghum		
	Feed	Droppings	Ad	Feed	Droppings	Ad	Feed	Droppings	Ad
<b>Protein (%)</b>	20.05± 0,23	15.67± 0,39	0,27 9±0, 21	20.69± 0,69	16.08± 0,58	0,286± 0,33	19.95± 0,09	15.49± 0,29	0,287 ±0,29
<b>OM (%)</b>	31.84± 0,10	27.45± 0,27	0,15 9± 0,22	29.31± 0,45	24.94± 0,38	0,175± 0,19	35.19± 0,17	30.06± 0,44	0,170 ±0,32
<b>MM (%)</b>	23.75± 0,14	21.91± 0,21	0,08 3±0, 34	22.49± 0,85	20.74± 0,36	0,084± 0,44	24.38± 0,24	22.42± 0,33	0,087 ±0,29
<b>Fibers (%)</b>	21.86± 0,78	19.35± 0,27	0,12 9±0, 14	22.63± 0,23	19.92± 0,18	0,136± 0,21	21.67± 0,39	19.01± 0,25	0,139 ±0,27
<b>Energy (kcal/kg)</b>	3198.48 ± 0,31	2857.35± 0,45	0,11 ±54	3189.8 6±	2874.54± 0,41	0,10,96 ±0,41	3195.8 4± 0,33	2862.84± 0,44	0,116 ±0,39

Values with the same letter on the same line are not significantly different at the 5% threshold. OM (organic matter); MM (mineral matter) Da (apparent digestibility).

#### III.4. Effects of rations at different levels of incorporation of sprouted off-season sorghum on the gut of broilers.

Figure 2 shows the effects of the different rations on the structure and morphology of the small intestine of broilers in the growth/finishing phase. Compared with the R0 control, the histological sections showed no structural or morphological alterations.



*Lu = Intestinal lumen; SM = Submucosa; Mus = Muscularis; Se = Serosa.*

**Figure 2: Histological sections of small intestine of chicken in growth/finishing phase**

#### **IV. Discussion**

##### **IV.1. Digestibility**

Energy, organic matter, mineral matter, proteins and fibre were not significantly influenced by the experimental rations used at the 0.05% threshold for digestibility. These results would be due to malting which would have hydrolyzed the starch and antinutrients of the sorghum. These results do not corroborate those of Selle et al. (2017) who demonstrated that the digestibility of sorghum is lower than that of maize; because of the intrinsic factors of sorghum including kafirin, phenolic compounds and phytate which can compromise the use of starch by broilers subjected to a sorghum-based diet. These results are confirmed by the *in vitro* and *in vivo* experiments of Vilarinho et al. (2016). In addition, the results of Métayer et al. (2015) on starch digestibility confirm the hypothesis of starch degradation, more or less important depending on the cereal, with the age of the subjects. The lack of significance with regard to the experimental rations would be justified by the good fibre content; because the presence of high amounts of fiber can impact the intestinal wall and reduce nutrient absorption (Qaisrani et al., 2014). These results can also be explained by the use of dry droppings because the quality of the predicted measurements

is lower than that obtained on dried droppings, which leads to better results (Bouvarel et al., 2014). Decreases in digestibility in birds fed diets containing high tannin sorghum have been observed (Kumar et al. 2007). As well as a significant reduction in nitrogen retention was found in broilers fed red sorghum as the only source of cereals in the diet (Sannamani, 2002),

#### **IV.2. Histological sections of the intestines**

The histological sections showed no structural or morphological alterations. This testifies to the non-toxicity of the various experimental rations, as well as the absence of pathogenic elements. The height of the villi and the depth of the crypts can be used as indicators of the health of the intestine and are therefore associated with the condition of the animals and the quality of the feed (Li et al., 2016). A thicker mucosa would consist of larger intestinal villi (length, width) to optimise absorption of digested nutrients Carré et al. (2008). large (length, width) to optimise absorption of digested nutrients Carré et al. (2008). A thicker muscularis could indicate the need for greater muscular work to promote the transit of a greater volume of digesta towards the distal parts of the small intestine. These results are consistent with those of Mathlouthi et al. (2002) who demonstrated that the association of bacteria with the intestinal mucosa and the production of different metabolites lead to anatomical and physiological changes in intestinal wall cells and smooth muscle. The poor quality of the food can be responsible for the alteration and inflammation of the mucosa (Gabriel et al., 2009; Irène et al., 2020). The type of cereal often has a direct influence on intestinal transit Amerah et al. (2008). Weurding et al. (2001), compared small intestine retention times for several types of cereals, including maize, wheat, sorghum, and other types of cereals.

#### **V. Conclusion**

The aim of this study was to assess the digestibility of feed rations containing sprouted off-season sorghum used as an energy source in broilers in the start-up phase and then in the growth/finishing phase. The results showed that broilers fed the three experimental rations showed no significant difference in the apparent digestibility of protein, fibre, organic matter, mineral matter and energy. Histological sections of the small intestine showed no structural or morphological alterations. Sprouted off-season sorghum can be used as a total replacement for maize in broiler diets without affecting morphology, small intestine function or digestibility.

## BIBLIOGRAPHICAL REFERENCES

**Akadiri. J. F, Aboh. A. B, Atchade. G. S. T, Olounlade. P. A, Houndonougbo. F. M. 2022.** Preference of feed, source of energy and digestibility of feed rations containing trifoliolate yam chips (*dioscorea dumetorum pax*) in broilers in Benin. *Agronomie Africaine* 34 (1) : 11 - 20 (2022).

**Amerah AM, Ravindran V, Lentle RG & Thomas DG. 2008.** Influence of feed particle size on the performance, energy utilization, digestive tract development, and digesta parameters of broiler starters fed wheat- and corn-based diets. *Poultry Science* 87, 2320-2328.

**Amougou . A, S. Abossolo, R. S. & Batha, 2013.** Climate dynamics and impacts on maize production in the western region of Cameroon, *Rev. Ivoir. Sci. Technol.*, 21 & 22 (2013) 209, (2013) 234 p.

**Banga.C.R., Amougou.J.A. & Mesmin T., 2019.** Rainfall variability and desertification in the Sudano-Sahelian zone of Cameroon. *World Wide journal of Multidisciplinary Research and Development*.

**Beghoul, S. 2015.** Effects of the use of cereals and protein crops other than maize and soybeans in broiler feed. Doctoral thesis. Univ. Frères Mantouri, Constantine 1. 217 pages. <https://bu.umc.edu.dz/these/veterinaire/BEG6667.PDFSUR>. Benabdeljelil, 1990

**Bourdillon A., Carre B., Conan L., Francesch M., Fuentes M., Huyghebaert G., Janssen W.M.M.A., Leclercq B., Lessire M., McNab J., Rigoni M., Wiseman J. 1990.** *Brit. Poultr. Sci.*, 31, 567-576.

**Bouvalet, I ; Lessire . M ; Narcy, A ; Duval, E ; Grasteau ; Quinsac, A ; Peyronnet, C ; Tran , G ; Heuze , Valérie . 2014.** Local protein sources for poultry feed: what are the ways forward? *EDP Sciences* 2014 DOI :10.1051/ocl/2014014

**Carré B, Mignon-Grasteau S, Besnard J, Rougière N, Juin H & Bastianelli D. 2008.** The D+ and D- "digestion" chicken lines selected for divergent digestion efficiency on a wheat-based diet. In *World Poultry Congress*, pp. 210. *World's Poultry Science Journal*, Brisbane, Australia.

**Dahouda M., Toléba S.S., Senou M., Youssao A. K. I., Hambuckers A. & Hornick J., 2009.** Unconventional food resources usable for poultry production in Africa: nutritional values and constraints. *Ann. Méd. Vét.*

**Diarra S.S. and A. Devi. 2015.** Feeding value of some cassava by-products meal for poultry: A review. *Pak J Nutr.* 14 (10): 735-741.

**Gabriel.I, Mallet.S, Sibille.P. 2005.** The digestive microflora of poultry: factors of variation and consequences for the animal. *INRAProd. Anim.* 18 (5), 309-322

**Irène Gabriel. (2020).** Digestive microbiota of poultry. Master. Master 2 DeQPA (Quality and Environment in Animal Production), 95 diapo.hal-02790899v2

**Issa Y, Mopate. L.Y, and –Missohou. A. 2012.** Marketing and consumption of traditional poultry in sub-Saharan Africa. *Journal of Animal & Plant Sciences*, 2012. Vol. 14, Issue 3:1985-1995 <http://www.m.elewa.org/JAPS>; ISSN 2071 7024

**Kouakou, K. J; Yao, K. B; Sika, A. E; Gogbeu, S. J; Koné, L. S. P; Dogbo, D. O. 2019.** Characterization of the market gardening activity in the municipality of Port Bouet (Abidjan, Ivory Coast). *Journal of Animal & Plant Sciences (J.Anim.Plant Sci.* ISSN 2071- 7024).

**Kumar. V, AV Elangovan, AB Mandal, PK Tyagi, SK Bhanja AND BB Dash. 2007.** Effects of feeding raw or reconstituted high tannin red sorghum on nutrient utilization and selected welfare parameters of broilers. *British Poultry Science* Volume 48, numéro 2 ,pp.198-204

**Li, Y., Xu, Q., Huang, Z., Lv, L., Liu, X., Yin, C., Yan, H., Yuan, J. 2016.** Effect of *Bacillus subtilis* CGMCC 1.1086 on the growth performance and intestinal microbiota of broilers. *Journal of Applied Microbiology.* 120, 195-204

**Mathlouthi N., Mallet S., Saulnier L., Quemener B., Larbier M. 2002.** Effects of xylanase and b-glucanase addition on performance, nutrient digestibility, and physico-chemical conditions in the small intestine contents and caecal microflora of broiler chickens fed a wheat and barley-based diet. *Anim. Res.*, 51, 395-406.

**Métayer-Coustard S, Petit A, Quentin M, Tesseraud S. 2019.** New early feeding strategies for poultry production: (Full text available in English). *INRAE Productions Animales*, 32(3), 417–430. <https://doi.org/10.20870/productions-animales.2019.32.3.2941>

**Métayer J.P., Lescoat P., Bastianelli D., Bouvarel I., Fournis Y., Vilariño M. 2015.** Factors of variation in nutrient digestibility in chicken: synthesis of the results of the DIGSPIR 11th project. *Journ. Rech. Avicole*, Tours, pp. 504-508.

**Mingoas K.J.P., Awah-Ndukum J., Mampom B.J., Mfopit M.Y. & Zoli P. A. 2017.** Effects of the rearing system on zootechnical performance and blood and biochemical parameters

in broilers in peri-urban areas of Ngaoundere, Cameroon. *Journal of Animal & Plant Sciences*, 32, issue 1: 5079-5094

**Qaisrani, S. N ; Moquet, P. C. A ; Krimpeu Van, M. M ; Kwakkel, R. F ; Verstegen, M. W. A ; Nenduks, W. H. 2014.** The protein source and diet structure influence the growth performance, morphology, and these fermentation characteristics of the gut in broilers. *Poultry Science* 93 : 3053-3064

**Pomalégni S.C.B., D.S.J.C. Gbemavo, C.P. Kpadé, M. Kenis and G.A. Mensah. 2017.** Traditional use of fly larvae by small poultry farmers in Benin. *J. Insects Food Feed.* 3 (3): 187-192.

**Sannamani, PG. (2002).** Nutritional value of sorghum grains compared to yellow maize for broiler chicks. M.V.Sc. Thèse, présentée à Deemed University, IVRI, Izatnaar, Inde.

**Selle PH, Moss AF, Truong HH, Khoddami A, Cadogan DJ, Godwin ID, Liu SY. 2017.** Outlook: Sorghum as a feed grain for Australian chicken-meat production, *Animal Nutrition Journal*, <https://doi: 10.1016/j.aninu.2017.08.007>.

**Tadondjou Tchingo, d'Alex C., R. Ponka, S. Babissi, M. Oumarou, F. Ngoula and A. Teguia, 2022.** Growth performance and haematological parameters of cockerel fed house fly larvae as a substitute to fish meal. *Asian J. Anim. Sci.*, 16: 37-44.

**Tchuenga, T.G et Saha, F. 2017.** Le maïs : A cereal with multiple uses in Cameroon under the threat of climatic constraints and pests. *Afrique Science* 13 (6)(2017)177-188.

**Teguia A., H. Endeley and A. Beynen. 2004.** Broiler performance upon dietary substitution of cocoa husks for maize. *Int. J. Poult. Sci.* 3 (12): 779-782.

**Vilariño M., J.-P. Métayer, B. Mahaut, I. Bouvarel, P. Lescoat, P. Chartrin, Y. Fournis, P. Hogrel, L. Bonnal and D. Bastianelli. 2016.** Characterize the nutritional value of feeds through innovative methods of measuring digestibility for sustainable poultry farming. *Innov. agron.* 49 :163-177.

**Weurding RE, Veldman A, Veen WAG, Van der Aar PJ & Verstegen MWA. 2001.** Starch digestion rate in the small intestine of broiler chickens differs among feedstuffs. *The Journal of Nutrition* 131, 2329-2335.