

# Original Research Article

## Phytochemical constituent and cumulative or antagonistic effects of crops plant organ combination on free radical scavenging capacity and antioxidant compound content

### ABSTRACT

**Aims:** In Burkina Faso, the majority of plant-based recipes are a combination of plant organs from the same or different species. For these recipes' producers, the aim is to improve efficiency. However, our ethnobotanical surveys have revealed that for some species, efficacy is better when the species is not combined, or when it is combined in small proportions with other species. The aim of this study is to assess the effect of plant organ combination on free radical scavenging activity, phenolic compound content and flavonoid content. **Study design:** The work combined harvesting and processing of plant material from September to November 2023, and laboratories analysis from January to March 2024 at Natural Substances Department of Institut de Recherche Sciences Appliquées et Technologie, Ouagadougou.

**Methodology:** We prepared two batches of recipes, first combining two species from the same genus, then two species from different genera. The powder of each plant without combination was also used to compare data. Phytochemical screening was first carried out with TLC and LC-MS analysis on each plant extract. We then assessed the phenolic compound content (PCC) using Folin-Ciocalteu method, flavonoid content (FCC) using aluminum chloride test, antioxidant content using TEAC method and free radical scavenging activity using DPPH method, for different batches.

**Results:** Phytochemical constituent in the three species are phenolic compounds, terpenoids and nitrogen derivatives. The results of biological property evaluation suggest that for best efficacy and to obtain a high phenolic compound content, *Lippia multiflora* leaves should be used separately, or combined in 70% proportions with *Lippia alba*, then in 50% proportions if the combination is made with *Ocimum basilicum*.

**Keywords:** *phytochemistry, Free-radical properties, plants organ combination, herbal recipes*

### 1. INTRODUCTION

Currently, plants are being used to treat a variety of pathologies [1, 2]. Plants and their organs are used either alone or in combination with organs of the same or different species [1, 2, 3]. Unfortunately, not mastering these combinations can lead to a reduction

Formatted: Font: (Default) +Headings CS, 12 pt, Bold, All caps

Formatted: Font: (Default) +Headings CS, 12 pt

Formatted: Font: (Default) +Headings CS

Formatted: Font: (Default) +Headings CS, 12 pt

Formatted: Font: (Default) +Headings CS

Formatted: Font: (Default) +Headings CS, 12 pt, Bold

Formatted: Font: (Default) +Headings CS, 12 pt

**Comment [CCP1]:** Introduction is very short, it should be comprehend and in detail background. References are repeated. Also add some more references.

Formatted: Font: (Default) +Headings CS, 12 pt, Bold, All caps

Formatted: Font: (Default) +Headings CS, 12 pt

in the desired efficacy. This study aims to investigate how the combination of these two medicinal plants (*Lippia multiflora* and *Lippia alba*) affects free radical scavenging activity, phenolic compound and flavonoid content. Despite the numerous studies on the *Lippia* genus (most of which have focused on essential oils) [3], the first work on non-volatile extracts was carried out by our research team since 2015 [4]. During this work, phenolic compounds content, DPPH radical scavenging activity and Lipid peroxidation inhibition assay of crude extracts and ethanol crude extract fractions were evaluated. This work is a continuation and aims to help the traditional healers we support to improve their recipes.

## 2. MATERIAL AND METHODS

### 2.1. Plant material

Plant material included the leaves of *Lippia multiflora* (Gambia tea), *Ocimum basilicum* and *Lippia alba* (Verbena). These species were grown between September and November 2023 in an experimental garden (12°25'28.2" N; 1°29'15.06" W) of Institut de Recherche Sciences Appliquées et Technologie (IRSAT) (Ouagadougou). Young seedlings of each species were paid at the Centre National de Sémences Forestières (CNSF). Each plant leaves were dried separately in the shade at room temperature for 15-45 days. The individual organs were ground and the different powders were used for combination elaboration.



**Fig 1:** *Lippia alba* (A) *Lippia multiflora* (B), *Ocimum basilicum* (C) species;

### Formula elaboration

The aim was to prepare different combinations of plants organs with the powders of both species in well determined proportions. The denomination of each combination and their combined proportions are grouped in table 1. In all, 2 grams of each combination was prepared

**Table 1:** Abbreviations, proportions and masses of the different combinations.

Formatted: Font: (Default) +Headings CS, 12 pt, Bold, All caps

Formatted: Font: (Default) +Headings CS, 12 pt

Formatted: Font: (Default) +Headings CS

Formatted: Font: (Default) +Headings CS

Formatted: Font: (Default) +Headings CS, 12 pt

Formatted: Font: (Default) +Headings CS

Formatted: Font: (Default) +Headings CS, 12 pt

Combination Code		<i>L. multiflora</i> proportion in each combination (%)
Batch 1	Batch 2	
LV1	LB1	0
LV2	LB2	30
LV3	LB3	40
LV4	LB4	50
LV5	LB5	60
LV6	LB6	70
Lm		100

**Batch 1:** Combination of *L. multiflora* and *Lippiaalba* or Verbena (Lippia/Verbena, (LV)) **Batch 2:** Combination of *L. multiflora* and *Ocimumbasilicum* or Basilic (Lippia/Basilic, (LB))

## 2.2 Chemicals reagents

Chemical material was reagents, analytical grade solvents and chemical analysis equipment. For reagents, we have: Gallic acid, 6-hydroxy-2,5,7,8-tetramethylchroman-2-carboxylic acid (Trolox), 2,2-diphenyl-1-picrylhydrazyl (DPPH), 2,2'-azino-bis (3-ethylbenz-thiazoline-6- sulfonic acid (ABTS), Folin-Ciocalteu's reagent, aluminum chloride and ascorbic acid (all from Sigma-Aldrich (St. Louis, MO). Solvents were methanol (MeOH or CH<sub>3</sub>OH), hydrochloric acid (HCl), formic acid (HCOOH), acetic acid (CH<sub>3</sub>COOH), and water (H<sub>2</sub>O). Chemical analysis equipment was as follows: BUCHI rotary evaporator, SAFAS spectrophotometer, CAMAG® automatic sample dispenser (LINOMAT 5) and silica gel TLC plates 60 F<sub>254</sub>.

## 2.3 Extraction

Maceration extraction technique has been used [3, 4]. This technique is based on free molecules diffusion through the vacuolar membranes due to their solubility or affinity with various solvents. In practice, 2 g of powder of each combination immersed in 15 mL of ethanol 96 % acidified with 2 % acetic acid (14.7 mL of ethanol+0.3 mL of acetic acid 80 %) and placed under mechanical mixing for 24 h. After filtration, on Wathmann paper N°3, the residue is taken twice in the same solvent. The collected filtrate was concentrated under vacuum to the minimum solvent using a BUCHI rotary evaporator. The dry extracts obtained were kept in a refrigerator for further analysis.

## 2.4 Chemical compounds characterization

Formatted: Font: (Default) +Headings CS, 12 pt, Bold

Formatted: Font: (Default) +Headings CS, 12 pt

Formatted: Font: (Default) +Headings CS, 12 pt, Bold

Formatted: Font: (Default) +Headings CS, 12 pt

Formatted: Font: (Default) +Headings CS, 12 pt, Bold

Formatted: Font: (Default) +Headings CS, 12 pt

Formatted: Font: (Default) +Headings CS, 12 pt

Formatted: Font: (Default) +Headings CS, 12 pt, Bold

Formatted: Font: (Default) +Headings CS, 12 pt

Formatted: Font: (Default) +Headings CS, 12 pt

Formatted: Font: (Default) +Headings CS, 12 pt, Bold

Formatted: Font: (Default) +Headings CS, 12 pt

Formatted: Font: (Default) +Headings CS, 12 pt

Formatted: Font: (Default) +Headings CS, 12 pt, Bold

Formatted: Font: (Default) +Headings CS, 12 pt

Formatted: Font: (Default) +Headings CS, 12 pt

Formatted: Font: (Default) +Headings CS, 12 pt, Bold

Formatted: Font: (Default) +Headings CS, 12 pt

Formatted ... [1]

Formatted ... [2]

Formatted ... [3]

Formatted ... [4]

Formatted ... [5]

Formatted ... [6]

Formatted ... [7]

Formatted ... [8]

Formatted: Space Before: 12 pt

Formatted: Font: (Default) +Headings CS

Formatted: Line spacing: 1.5 lines

Formatted ... [9]

Phytochemical screening was carried out using TLC tests described by Hildebert et al (2016) [5] combined with LC-MS described by Hutabarat et al (2019) with minor modifications.

For TLC, the HP-TLC was used and 10 µl of each extract at 20 mg/ml was applied to a silica gel plate in the form of a 5 mm long strip using a CAMAG Linomat 5 semi-automatic TLC autosampler. After application, the plates were developed upwards in a pre-saturated glass double-trough chamber for 30 minutes with a mobile phase consisting of the solvent system Ethyl Acetate/Acetic Acid/Formic Acid/H<sub>2</sub>O (100:11:11:26). The length of the chromatographic run was 70 mm from the bottom edge of the plate. After development, the plates were dried using a hair dryer. Flavonoids were detected using Neu's reagent. Quercetin and rutin were used as standards.

For LC-MS analysis, the chromatograph used for separation is an Agilent Technologie HPLC 1290 system coupled to a binary pump, MS detector, autosampler and MassHunter workstation. Separation was performed on a ZORBAX 15 cm C18 column. An elution gradient was applied with a binary system composed of: phase A (H<sub>2</sub>O-HCOOH 2% v: v) and phase B (acetonitrile 100 %). The flow rate was 0.8 ml/min at 25°C, and the gradient was programmed as follows: from 0-5 min, 5% B isocratic; 5-40 min, 5 to 95 % B; from 40-42 min, 95% B isocratic; and from 42-45 min, back to 5% B. Analysis time is therefore 45 mins.

## 2.5 Free radical scavenging properties determination

Free radical scavenging properties of different tea formulations was measured using the DPPH method, first described by Brand-Williams et al (1995) [6] but modified for microplates [7, 8]. This method is a colorimetric method based on the Beer-Lambert law. The 2,2-diphenyl-1-picrylhydrazyl radical (DPPH) reduced by the antioxidant compound has a maximum absorption wavelength at 515 nm.

Protocol consists to mix 200 µL of DPPH reagent (methanolic solution with concentration 0.04 mg/mL) with 50 µL of standard (to establish the calibration curve) or each extract at different concentrations in microplates. After 10 min of incubation at room temperature, the absorbance of the yellowish colored mixture is read at 515 nm against a blank consisting of the different solvent used to prepare the extracts and the reagent. The antiradical capacity is determined by calculating the IC<sub>50</sub> (concentration of a sample reducing 50 % of the DPPH radicals)

## 2.6 Phenolic compounds quantification

Phenolic compounds content (PCC) is measured according to Folin-Ciocalteu method modified for microplates [7, 9]. The method consists to mix 60 µL of sample (standard or extracts) with 60 µL of Folin-Ciocalteu reagent (RFC) diluted tenfold.

Formatted: Font: (Default) +Headings CS, 12 pt, French (France)

Formatted: Font: (Default) +Headings CS, 12 pt

After 8 min, 120  $\mu\text{L}$  of a 7.5% (w/v) aqueous  $\text{Na}_2\text{CO}_3$  solution is added to neutralize the residual reagent (RFC). Absorbances are measured at 765 nm after 30 min incubation at 37°C. PCC values, determined from the equation for the gallic acid curve (used as a standard), are expressed as  $\mu\text{g}$  gallic acid equivalent per milligram of extract ( $\mu\text{g}$  GAE/mg).

## 2.7 Flavonoids compounds quantification

To assess total flavonoid content in extracts, a colorimetric method described by Zhishen et al (1999) was used, with some modifications for microplate applications [7, 10]. In practice, a range of dilutions, from 2.5 to 0.019 mg/mL, were prepared with 50  $\mu\text{L}$  of a 5 mg/mL solution of each extract in the microplates. Then 150  $\mu\text{L}$  of bi-distilled water and 15  $\mu\text{L}$  of an aqueous solution of sodium nitrite (concentration 0.05 mg/mL) were added to each well. After a waiting time of 5 minutes, 15  $\mu\text{L}$  of an aqueous aluminum trichloride solution (concentration 0.1 mg/mL) is added to the previous mixture. This new mixture is kept at room temperature during 6 minutes before adding 50  $\mu\text{L}$  of a 1 mol/L sodium hydroxide solution. A pinkish solution is formed and the absorbance of this mixture is read at 510 nm with a 96-well spectrophotometer (spectrophotometer MP96, SAFAS). The flavonoid content of extracts, expressed in mg quercetin equivalent per gram extract, was calculated by reporting absorbance's on a reference curve established with quercetin under the same conditions as described in the previous section.

## 2.8 Antioxidant compounds quantification

Antioxidant compounds content (ACC) of extracts was evaluated using ABTS reagent method first reported by Miller et al. (1993) [11]. This method is a colorimetric method based on the radical-cation reduction by antioxidant compounds present in extracts. This radical-cation is first generated by mixing 10 mL of aqueous solution of potassium persulfate  $\text{K}_2\text{S}_2\text{O}_8$  (39.2 mM) and 50 ml of aqueous solution of ABTS (7.01 mM). The mixture was placed in the refrigerator during 16 hours (minimum time to generate the radical-cation).

For the assay, the ABTS cation-radical solution must have an absorbance value between 0.3 and  $0.7 \pm 0.02$  at 734 nm. If this is not the case, the solution is diluted with distilled water to get a good absorbance before use. In practice, to 50  $\mu\text{L}$  of a range of extract solution or standard (concentration varying between 0.006 - 0.5 mg/mL) have been added to 120  $\mu\text{L}$  of ABTS solution. After 10 min of incubation at room temperature; the absorbance was read at 734 nm. The standard used were Trolox. The absorbance was related to the calibration curve established with Trolox ( $y = -19.41x + 0.7197$ ;  $R^2 =$

0.9953). Total Antioxidant Contents (TAC) was expressed as  $\mu\text{g}$  Trolox Equivalent per mg of extract (TE/mg).

## 2.9 Statistical analysis

Statistical analysis was performed using R software. The results are presented as mean  $\pm$  standard deviation calculated at the probability limit less than or equal to 95%.

## 3. RESULTS AND DISCUSSION

### 3.1 Results

#### 3.1.1 Chemical Compounds Characterization

The TLC profile (Fig 2) shows blue, dark yellow, light yellow and red spots at 366 nm after spraying with Neu's reagent. These fluorescent spots could be flavanol and isoflavanone derivatives (blue), favonol derivatives (light and dark yellow) and terpenoids (red or blue) [12, 13, 14, 15, 16]. We also observe that dark yellow spots have the same frontal reference as quercetin used as a standard. The results of phytochemical screening with TLC are summarized in the Table 2 and Table 3.

**Table 2:** TLC data (Front reference: Rf; Fluorescence under UV-365 nm) of the crude extract and standards.

	Plants			Standards	
	<i>Ocimum basilicum</i>	<i>Lippia multiflora</i>	<i>Lippia alba</i>	Quercetin	Rutin
Numbers of spots	2	3	4	1	1
Front reference	0.83; 0.93	0.5; 0.83; 0.93	0.25; 0.5; 0.83; 0.93	0.83	0.25
Fluorescence under UV-365 nm after spraying	Blue and red	Blue; Dark yellow and Red	blue and dark yellow, pink	Light yellow	Dark yellow

Formatted: Font: (Default) +Headings CS, 12 pt, French (France)

Formatted: Font: (Default) +Headings CS, 12 pt

Formatted: Font: (Default) +Headings CS, 12 pt, Bold, All caps

Formatted: Font: (Default) +Headings CS, 12 pt

Formatted Table

Formatted: Font: (Default) +Headings CS, 12 pt, Bold

Formatted: Font: (Default) +Headings CS, 12 pt, Bold

Formatted: Font: (Default) +Headings CS, 12 pt

Formatted: Font: (Default) +Headings CS, 12 pt

Formatted: Font: (Default) +Headings CS, 12 pt

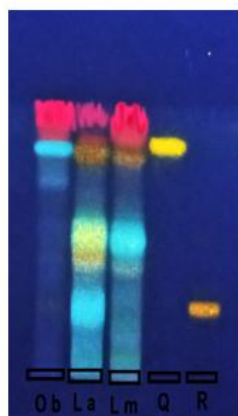
Formatted: Font: (Default) +Headings CS

Formatted: Font: (Default) +Headings CS, 12 pt

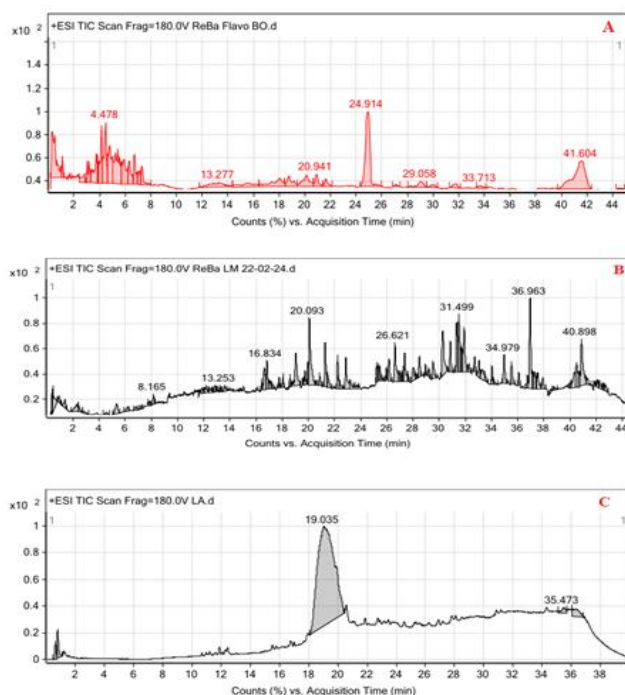
**Table 3:** Chemical groups of plant leaves extracts

Plants	Flavonoids	Tannins	Saponins	Terpenoids	alkaloids
<i>Lippia multiflora</i>	+	+	+	-	-
<i>Lippia alba</i>	+	-	-	+	+
<i>Ocimum basilicum</i>	+	-	+	+	+

Data analysis shows that extracts from *thrice* *ees* plants contain the major antioxidants recognized (flavonoids, terpenoids, etc.) [3, 7, 14, 16]. Extracts of the two species of *Lippia* genus contain mainly flavanol, isoflavanone and favonol derivatives. However, extracts of *O. basilicum* contain terpenoid or flavanol/flavanone derivatives. Molecular affinity with solvent and maceration time could explain the difference in chemical composition of the samples. HPLC analysis coupled with mass spectrometry was used to determine some molecular ions of the compounds contained in these samples.



Legend :  
 Ob : *Ocimum basilicum*  
 La : *Lippia multiflora*  
 Lm : *Lippia multiflora*  
 Q : Quercétine, R : Rutine



**Fig 2:** TLC plate of three species extracts and TIC of *O. basilicum* extract (A), *L. multiflora* extract (B), *L. alba* extract (C)

Total ion chromatograms (TIC) (Fig 2) show intense peaks at  $R_t = 31.49$  min and  $36.96$  min in *Lippia multiflora* extract and at  $R_t = 4.47$  min and  $24.91$  min in *O. basilicum*

Formatted: Font: (Default) +Headings CS, 12 pt, Bold

Formatted: Font: (Default) +Headings CS, 12 pt

Formatted: Font: (Default) +Headings CS, 12 pt, Bold

Formatted: Font: (Default) +Headings CS, 12 pt

Formatted: Font: (Default) +Headings CS, 12 pt, Bold

Formatted: Font: (Default) +Headings CS, 12 pt

Formatted: Font: (Default) +Headings CS, 12 pt, Bold

Formatted: Font: (Default) +Headings CS, 12 pt

Formatted: Font: (Default) +Headings CS, 12 pt, Bold

Formatted: Font: (Default) +Headings CS, 12 pt

Formatted: Font: (Default) +Headings CS, 12 pt, Bold

Formatted: Font: (Default) +Headings CS, 12 pt

Formatted: Font: (Default) +Headings CS, 12 pt, Bold

Formatted: Font: (Default) +Headings CS, 12 pt

Formatted: Font: (Default) +Headings CS, 12 pt, Bold

Formatted: Font: (Default) +Headings CS, 12 pt

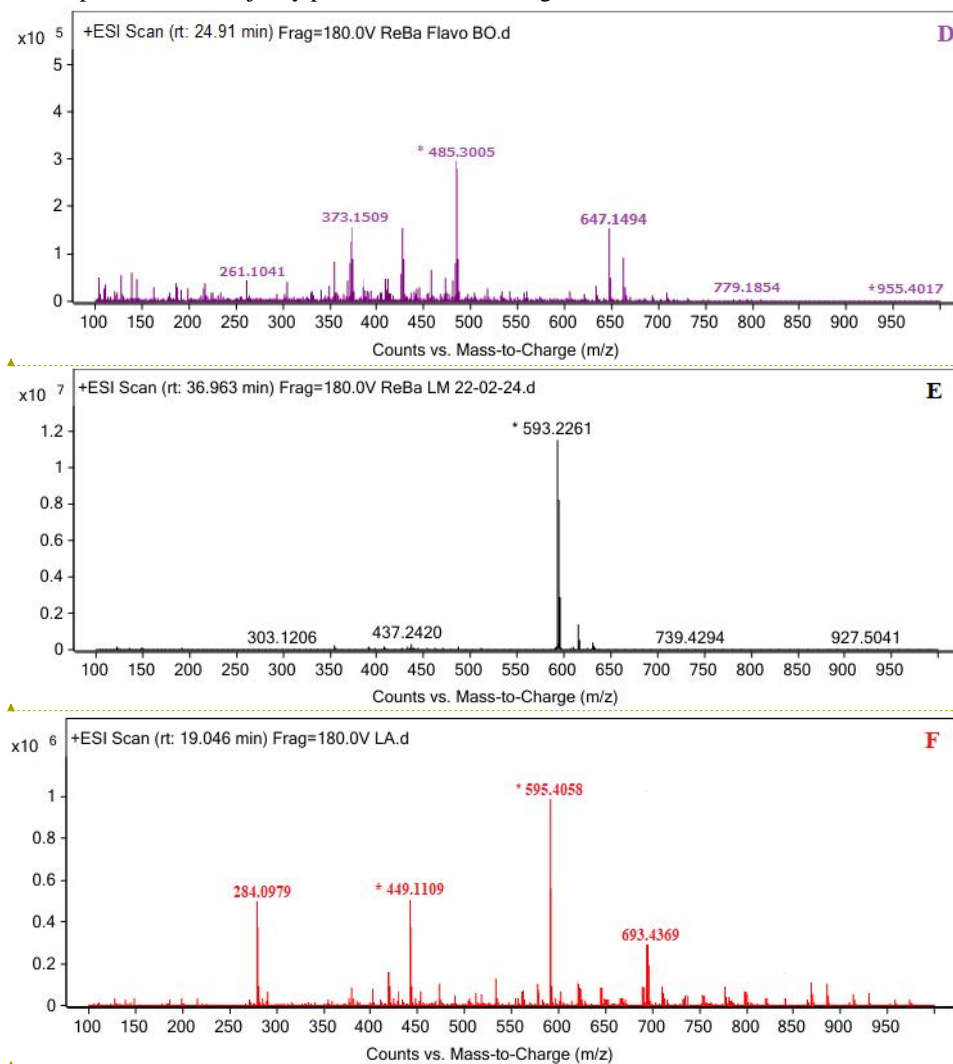
Formatted: Font: (Default) +Headings CS, 12 pt

Formatted: Font: (Default) +Headings CS

Formatted: Font: (Default) +Headings CS, 12 pt, Bold, All caps

Formatted: Font: (Default) +Headings CS, 12 pt

extract. Their mass spectra show that the majority peaks at Rt= 31.49 min and 36.96 min in *Lippia multiflora* extract are mono and diglucosilatedflavonol derivatives. In contrast, the majority peaks at Rt= 4.47 min and 24.91 min in the *O. basilicum* extract are terpenoids LC-MS analysis of plant extracts confirms the TLC profile. Fig. 3 shows the mass spectra of the majority peaks in the chromatograms of the various extracts



Formatted: Font: (Default) +Headings CS, 12 pt

Formatted: Font: (Default) +Headings CS, 12 pt

Formatted: Font: (Default) +Headings CS, 12 pt

Formatted: Font: (Default) +Headings CS, 12 pt

Formatted: Font: (Default) +Headings CS, 12 pt

Formatted: Font: (Default) +Headings CS, 12 pt

**Fig 3:** Mass spectra of major peaks of *O. basilicum* extract (D), *Lippia multiflora* extract (E), *Lippia alba* extract (F)

Only precursor ions were collected. Molecular ions and their suggested molecules are listed in Tables 4 (*Lippia multiflora*); 5 (*Ocimum basilicum*); 6 (*Lippia alba*).

**Table 4:** Molecular or fragment ions of individual peaks of Total Ion Chromatograms (TIC) of *L. multiflora* extract

Pic N°	Rt (min)	Molecular or Fragment ions ( $[M + H]^+$ , $[M]^+$ , $[M + H - H_2O]^+$ )	Suggested names of molecular (Formula)
1	5.35	955.4 ; 817.6 ; 809.5 ; 644.3 ; 610.2 ; 503.0 ; 483.3 ; 448.1 ; 443.1 ; 427.1 ; 389.1 ; 373.1 ; 329.1 ; 278.9	Retigericacid B ( $C_{30}H_{46}O_6$ ) ; Isoorientin-7-O-[6-sinapoyl]-glucosid ( $C_{21}H_{20}O_{11}$ ) ; Retigericacid B-diglucosid-arabinosid ( $C_{48}H_{74}O_{19}$ ) ; Cinnamicacid ( $C_{10}H_{12}O_3$ )
2	8.16	627.2 ; 609.4 ; 595.3 ; 464.1 ; 462.2 ; 448.1	Delphinidin-3,5-diglucosid ( $C_{27}H_{31}O_{17}^+$ ) ; Malvidin 3,5-diglucosid ( $C_{29}H_{35}O_{17}^+$ ) ; Peonidin 3-O-rutinosid ( $C_{28}H_{33}O_{15}^+$ ) ; Cyanidin 3-rutinosid ( $C_{27}H_{31}O_{15}^+$ )
3	13.25	732.4 ; 537.2 ; 463.2	Peonidin 3-O-glucosid ( $C_{22}H_{23}O_{11}^+$ ) ; Manassantin A ( $C_{42}H_{52}O_{11}$ )
4	16.84	671.2 ; 508.1 ; 495.2 ; 361.0 ; 346.0 ; 331.04	Gossypetin-3,8,3'-trimethylether ( $C_{18}H_{16}O_8$ ) ; Malvidin-3-galactosid ( $C_{23}H_{25}O_{12}$ ) ; Spinacetin-3-gentiobiosid ( $C_{29}H_{34}O_{18}$ )
5	20.09	975.5 ; 503.3 ; 459.3 ; 391.1 ; 313.1 ; 369.18 ; 291.1 ; 283.1	Madecassosid ( $C_{48}H_{78}O_{20}$ )
6	26.62	935.2 ; 788.1 ; 626.1 ; 611.1 ; 463 ; 465.0 ; 465.2 ; 463 ; 447.1 ; 441.1 ; 419.0 ; 420.2 ; 303 ; 302 ; 288.0 ; 288.1	Eriodictyol-7-glucuronid ( $C_{21}H_{20}O_{12}$ ) ; Glucuronid-estriol ( $C_{24}H_{32}O_9$ ) ; Quercetin-3-p-coumarylsophorosid-7-glucosid ( $C_{42}H_{46}O_{24}$ ) ; Rutin ( $C_{27}H_{30}O_{16}$ ) ; Grandidentosid or hydroxycinnamicacid ( $C_{21}H_{28}O_{10}$ )
7	31.49	565.1 ; 539.0 ; 397.3 ;	Cupressuflavon ( $C_{21}H_{28}O_{10}$ ) ; Apigeninglucosidarabinosid ( $C_{26}H_{28}O_{14}$ ) ; 2',4,4',6'-Tetramethylether-3'-prenylchalcon ( $C_{24}H_{28}O_5$ )
8	36.96	683.1 ; 615.2 ; 595.2 ; 593.2 ; 486.3 ; 437.2 ; 391.1 ; 355.2 ; 303.1	Apigenin-di-C-glucosid ( $C_{27}H_{30}O_{15}$ ) ; Quercetin-dirhamnosid ( $C_{27}H_{30}O_{15}$ ) ; Robinin ou Kaempferol-3-O-galactosid-rhamnosid-7-O-rhamnosid ( $C_{33}H_{40}O_{19}$ ) ; Kaempferol-O-neohesperidosid

- Formatted: Font: (Default) +Headings CS, 12 pt, Bold, French (France)
- Formatted ... [10]
- Formatted ... [11]
- Formatted ... [13]
- Formatted ... [12]
- Formatted ... [14]
- Formatted ... [15]
- Formatted ... [16]
- Formatted ... [17]
- Formatted ... [18]
- Formatted ... [19]
- Formatted ... [20]
- Formatted ... [21]
- Formatted ... [22]
- Formatted ... [23]
- Formatted ... [24]
- Formatted ... [25]
- Formatted ... [26]
- Formatted ... [27]
- Formatted ... [28]
- Formatted ... [29]
- Formatted ... [30]
- Formatted ... [31]
- Formatted ... [32]
- Formatted ... [33]
- Formatted ... [34]
- Formatted ... [35]
- Formatted ... [36]
- Formatted ... [37]
- Formatted: Font: (Default) +Headings CS, 12 pt, French (France)
- Formatted ... [38]
- Formatted ... [39]
- Formatted: Font: (Default) +Headings CS, 12 pt, No underline, Font color: Auto
- Formatted: Font: (Default) +Headings CS, 12 pt, French (France)
- Formatted ... [40]
- Formatted: Font: (Default) +Headings CS, 12 pt, No underline, Font color: Auto

		(C <sub>27</sub> H <sub>30</sub> O <sub>15</sub> ) ;
<b>9</b>	40.89	Rhamnocitrin 3-rutinosid (C <sub>28</sub> H <sub>32</sub> O <sub>15</sub> ) ; Cyanidin 3-sambubosid (C <sub>26</sub> H <sub>29</sub> O <sub>15</sub> <sup>+</sup> ) ; Kaempferol-3, 5-diarabinosid-5''- ethanoate (C <sub>30</sub> H <sub>34</sub> O <sub>18</sub> )

**Table 5:** Molecular or fragment ions of individual peaks of Total Ion Chromatograms (TIC) of *O. basilicum* extract

Pic N°	Rt (min)	Molecular or Fragment ions ([M + H] <sup>+</sup> , [M] <sup>+</sup> , [M + H - H <sub>2</sub> O] <sup>+</sup> )	Suggested names of molecular
<b>1</b>	4.47	1223.6 ; 1060.5 ; 1089.5 ; 912.4 ; 897.3 ; 678.3 ; 633.3 ; 501.3 ; 472.3 ; 456.3	Sapogenins glycosides (C <sub>58</sub> H <sub>94</sub> O <sub>27</sub> ) ; Isocyclamin (C <sub>58</sub> H <sub>94</sub> O <sub>27</sub> )
<b>2</b>	13.27	451.2 ; 439.2 ; 408.2 ; 376.1	6-Glucosyl-3,4',5,7- tetrahydroxyflavanon (C <sub>21</sub> H <sub>22</sub> O <sub>11</sub> ) ; Licorisoflavan A (C <sub>27</sub> H <sub>34</sub> O <sub>5</sub> )
<b>3</b>	20.94	773.2 ; 627.1 ; 609.1 ; 464.0 ; 448.0 ; 301.0	Kaempferol-3-sophorosid-7-glucosid (C <sub>33</sub> H <sub>40</sub> O <sub>21</sub> ) ; Delphinidin-3,5- diglucosid (C <sub>27</sub> H <sub>31</sub> O <sub>17</sub> <sup>+</sup> ) ; Kaempferol-3-glucosid (C <sub>21</sub> H <sub>20</sub> O <sub>11</sub> )
<b>4</b>	24.91	955.4 ; 647.1 ; 485.3 ; 440.3	Chiisanosid (C <sub>48</sub> H <sub>74</sub> O <sub>19</sub> ) ; Ciisanogenin (C <sub>30</sub> H <sub>44</sub> O <sub>5</sub> )
<b>5</b>	29.05	569.4 ; 551.4 ; 534.4 ; 429.3	Lutein or Zeaxanthin (C <sub>40</sub> H <sub>56</sub> O <sub>2</sub> )
<b>6</b>	33.71	671.2 ; 595.2 ; 508.1 ; 448.1 ; 286.0 ; 346.0	Spinacetin 3- gentiobiosid (C <sub>29</sub> H <sub>34</sub> O <sub>18</sub> ) ; Luteolin- 5-o-rutinosid (C <sub>27</sub> H <sub>30</sub> O <sub>15</sub> )
<b>7</b>	41.60	ND	ND

**Table 6:** Molecular or fragment ions of individual peaks of Total ion chromatograms of *L. alba* extract

Pic	Rt (min)	Molecular or Fragment ions	Suggested name of molecular
-----	----------	----------------------------	-----------------------------

- Formatted ... [41]
- Formatted ... [42]
- Formatted ... [43]
- Formatted ... [44]
- Formatted ... [45]
- Formatted ... [46]
- Formatted ... [47]
- Formatted ... [48]
- Formatted ... [49]
- Formatted ... [50]
- Formatted ... [51]
- Formatted ... [52]
- Formatted ... [53]
- Formatted ... [54]
- Formatted ... [55]
- Formatted ... [56]
- Formatted ... [57]
- Formatted ... [58]
- Formatted ... [59]
- Formatted ... [60]
- Formatted ... [61]
- Formatted ... [62]
- Formatted ... [63]
- Formatted ... [64]
- Formatted ... [65]
- Formatted ... [66]
- Formatted ... [67]
- Formatted ... [68]
- Formatted ... [69]
- Formatted ... [70]
- Formatted ... [71]
- Formatted ... [72]
- Formatted ... [73]
- Formatted ... [74]
- Formatted ... [75]
- Formatted ... [76]
- Formatted ... [77]
- Formatted ... [78]
- Formatted ... [79]
- Formatted ... [80]
- Formatted ... [81]
- Formatted ... [82]

N°		$([M + H]^+ [M]^+ , [M + H - H_2O]^+)$	(Formula)
1	0.82	580.2 ; 550.1 ; 541.2 ; 425.6 ; 404 ; 391.2 ; 374.1	Digoxigenin (C <sub>23</sub> H <sub>34</sub> O <sub>5</sub> ) ; Cymarigenen (C <sub>23</sub> H <sub>32</sub> O <sub>6</sub> ), Fumitremorgin A (C <sub>32</sub> H <sub>41</sub> N <sub>3</sub> O <sub>7</sub> ) ; 11-cétocyclopamine (C <sub>27</sub> H <sub>39</sub> NO <sub>3</sub> )
2	11.88	611.6 ; 610.6 ; 464.4 ; 567.5 ; 370.2 ; 272.25	Neohesperidin (C <sub>28</sub> H <sub>34</sub> O <sub>15</sub> ) ; Quercetin 3-galactosid (C <sub>21</sub> H <sub>20</sub> O <sub>12</sub> ) ; Peonidin 3-rutinosid (C <sub>28</sub> H <sub>33</sub> O <sub>15+</sub> ) ; 6, 8 diarabinose-5, 7, 3'-trihydroxyflavone (C <sub>25</sub> H <sub>26</sub> O <sub>15</sub> ) ;
3	15.49	752.2 ; 593.4 ; 445.6 ; 336.2	Ginsenosid (C <sub>30</sub> H <sub>52</sub> O <sub>2</sub> ) ; Kaempferol 3-[6''-(3-hydroxy-3-methylglutaryl) glucosid] (C <sub>27</sub> H <sub>28</sub> O <sub>15</sub> ) ; 4',5,7-Trimethoxyflavanone (C <sub>18</sub> H <sub>16</sub> O <sub>5</sub> )
4	16.72	683.2 ; 639.1 ; 611.1 ; 492.0 ; 447.1 ; 331.0 ; 284.0	Kaempferol-3,7-di-o-glucosid (C <sub>27</sub> H <sub>30</sub> O <sub>16</sub> ) ; Haploside D (C <sub>30</sub> H <sub>34</sub> O <sub>18</sub> ) ; Rutin (C <sub>27</sub> H <sub>30</sub> O <sub>16</sub> ) ; pentamethoxyflavone (C <sub>20</sub> H <sub>20</sub> O <sub>7</sub> )
5	19.07	595.4 ; 464.5 ; 447.1 ; 452.3 ; 432.0 ; 433.4 ; 372.4 ; 284.0	Kaempferol 3-O-arabinoside-7-O-rhamnosid (C <sub>27</sub> H <sub>30</sub> O <sub>15</sub> ) ; Quercetin 3-glucosid (C <sub>21</sub> H <sub>20</sub> O <sub>12</sub> ) ; epicatechin-O-glucosid (C <sub>21</sub> H <sub>24</sub> O <sub>11</sub> ) ; Apigenin 7-glucosid (C <sub>21</sub> H <sub>20</sub> O <sub>10</sub> )
6	35.52	649.4 ; 239.1 ; 186.2 ; 138.08	ND
7	36.27	605.4 ; 186.2 ; 138.1	ND

Molecular ion analysis suggests that extracts from all three species contain phenolic compounds (flavonoids and phenolic acids), terpenoids and nitrogen derivatives. Indeed, analysis of LC-MS mass spectra (Figure 2 and Table 4, 5 and 6) shows molecular ions and/or fragments of known terpenoids and flavonoids. The different masses were assigned on the basis of spectral analysis and literature data. Although we didn't do MS/MS of individual molecules, the literature allowed us to give the position of some sugars on the aglycone. Indeed, during flavonoid biosynthesis, the order of attachment of sugars to the aglycone is well known [7, 16, 17, 18, 19]. In addition, binding considers the molecular weight, polarity and stability of the molecule [21]. After chemical group

- Formatted ... [83]
- Formatted ... [84]
- Formatted ... [85]
- Formatted ... [86]
- Formatted ... [87]
- Formatted ... [88]
- Formatted ... [89]
- Formatted ... [90]
- Formatted ... [91]
- Formatted ... [92]
- Formatted ... [93]
- Formatted ... [94]
- Formatted ... [95]
- Formatted ... [97]
- Formatted ... [96]
- Formatted ... [98]
- Formatted ... [99]
- Formatted ... [100]
- Formatted ... [101]
- Formatted ... [103]
- Formatted ... [102]
- Formatted ... [104]
- Formatted ... [105]
- Formatted ... [106]
- Formatted ... [107]
- Formatted ... [108]
- Formatted ... [109]
- Formatted ... [110]
- Formatted ... [111]
- Formatted ... [112]
- Formatted ... [113]
- Formatted ... [115]
- Formatted ... [114]
- Formatted ... [116]
- Formatted ... [117]
- Formatted ... [118]
- Formatted ... [119]
- Formatted ... [121]
- Formatted ... [120]
- Formatted ... [122]
- Formatted ... [123]
- Formatted ... [124]
- Formatted ... [125]
- Formatted ... [126]

identification, some compounds such as phenolic compounds in general and flavonoids in particular were quantified.

### 3.1.2 Phenolics and flavonoids Compounds quantification (PCC and FCC)

Phenolic and flavonoid content were assessed by FolinCiocalteux Reagent (RFC) and aluminum trichloride methods respectively. Values were calculated by plotting Optical Density (OD) against the equations of the etalon curves preestablished with gallic acid ( $y = 7.0356x + 0.03$ ;  $R^2 = 0.9999$ ) (Figure 2A) (for phenolic compound content) and with quercetin ( $y = 0,2911x + 0,025$ ;  $R^2 = 0,9929$ ) (for flavonoid content) (Figure 2B). For flavonoid content, values were expressed in  $\mu\text{g}$  Quercetin Equivalent ( $\mu\text{g QE/mg}$ ) per mg extract, and for phenolic compound content, values were expressed in  $\mu\text{g}$  Gallic Acid Equivalent (GAE) mg extract ( $\mu\text{g GAE/mg}$ ). All values were grouped together in Table 3. Data analysis showed that *Lippia multiflora* leaves were more phenolic ( $132.482 \pm 0.656 \mu\text{g GAE/mg}$ ) than *Lippia alba* ( $62.131 \pm 3.695$ ) and *Ocimum basilicum* ( $39.746 \pm 1.833$ ). A similar observation was made with the values obtained for the quantification of flavonoids.

Table 3 data analysis shows also, for Batch 1, that total phenolic content varies from  $62.131 \pm 3.695 \mu\text{g GAE/mg}$  (LV1; 100 % *Lippia alba*) to  $159.205 \pm 2.709 \mu\text{g GAE/mg}$  (LV6). Flavonoid content ranged from  $57.775 \pm 3.331 \mu\text{g QE/mg}$  to  $124.086 \pm 1.025 \mu\text{g QE/mg}$ . The highest flavonoid ( $124.086 \pm 1.025 \mu\text{g QE/mg}$ ) and total phenolic compound ( $159.205 \pm 2.709$ ) contents were obtained in the blend containing 70 % *Lippia multiflora* (LV6). Except LV4 (Combination containing 50 % *Lippia multiflora*), the evolution of the different contents followed the proportion of *Lippia multiflora* in the formulations. Indeed, the LV4 blend showed a lower phenolic compound content ( $118.193 \pm 7.228$ ) than the LV3 proportion ( $123.304 \pm 3.359$ ) containing 40 % *Lippia multiflora*.

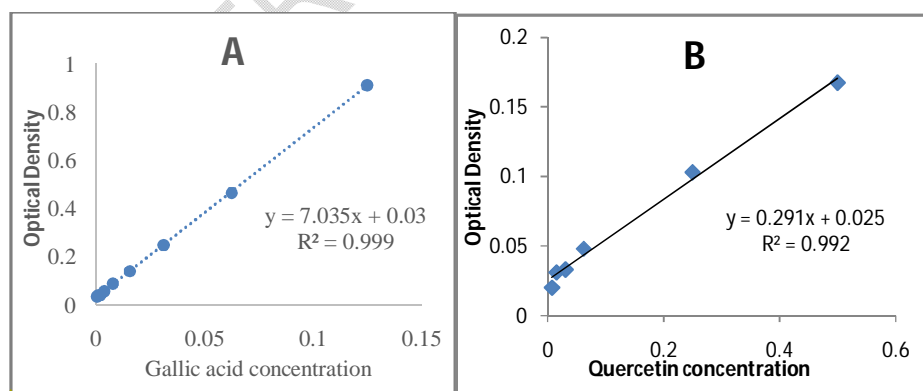


Fig 4: Gallic acid standard curve (A) Quercetin standard curve (B)

Formatted: Font: (Default) +Headings CS, 12 pt

Formatted: Font: (Default) +Headings CS, 12 pt, No underline, Font color: Auto

Formatted: Font: (Default) +Headings CS, 12 pt

Formatted: Font: (Default) +Headings CS, 12 pt, No underline, Font color: Auto

Formatted: Font: (Default) +Headings CS, 12 pt

Formatted: Font: (Default) +Headings CS, 12 pt, No underline, Font color: Auto

Formatted: Font: (Default) +Headings CS, 12 pt

Formatted: Font: (Default) +Headings CS, 12 pt, No underline, Font color: Auto

Formatted: Font: (Default) +Headings CS

Formatted: Font: (Default) +Headings CS, 12 pt, No underline, Font color: Auto

Formatted: Left

Formatted: Font: (Default) +Headings CS, 12 pt

**Table 7:** Data of FRSP, PCC, ACC and FCC

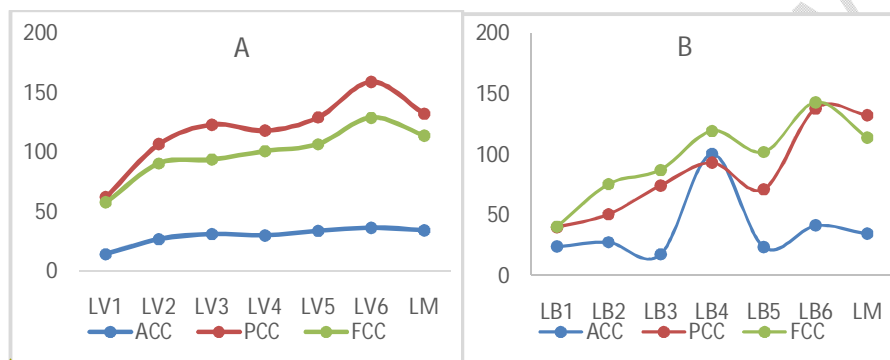
Extracts	FRSP (mg/ml)	PCC	ACC	FCC	
<b>Batch 1</b>	LV1	5.605±0.876	62.131±3.695	14.213±0.082	57.775±3.331
	LV2	2.504±0.007	106.85±4.408	27.021±0.565	90.563±2.562
	LV3	1.758±0.005	123.304±3.359	31.169±0.162	93.916±2.306
	LV4	1.903±0.005	118.193±7.228	30.166±0.113	100.983±3.971
	LV5	0.254±8E-04	129.285±2.164	33.843±0.716	106.872±2.690
	LV6	0.208±6E-05	159.205±2.709	36.612±0.47	129.086±1.025
<b>Batch 2</b>	LB1	0.494±0.027	39.746±1.833	23.771±0.376	40.433±1.001
	LB2	0.887±0.003	50.530±0.769	27.579±0.345	75.712±1.895
	LB3	1.127±0.014	74.257±1.106	17.456±0.642	87.298±1.007
	LB4	0.682±0.023	93.130±1.617	100.445±5.422	119.635±3.024
	LB5	0.783±0.047	71.176±0.939	23.662±1.175	102.171±2.940
	LB6	1.441±0.031	138.042±0.153	41.384±1.504	143.33±8.528
<b>Lm</b>	0.896±0.020	132.482±0.656	34.536±0.565	113.938±2.093	
<b>Trolox</b>	0.012±3.82E-05	ND	ND	ND	
<b>Ascorbic acid</b>	0.0783±0.096	ND	ND	ND	

*Free Radical Scavenging Properties (FRSP); Phenolic Compounds Content (PCC); Antioxidant compound content (ACC); Flavonoids compounds content (FCC); No Determined (ND).*

- Formatted ... [127]
- Formatted ... [128]
- Formatted ... [129]
- Formatted ... [130]
- Formatted ... [131]
- Formatted ... [132]
- Formatted ... [133]
- Formatted ... [134]
- Formatted ... [135]
- Formatted ... [136]
- Formatted ... [137]
- Formatted ... [138]
- Formatted ... [140]
- Formatted ... [141]
- Formatted ... [142]
- Formatted ... [143]
- Formatted ... [144]
- Formatted ... [145]
- Formatted ... [146]
- Formatted ... [147]
- Formatted ... [148]
- Formatted ... [149]
- Formatted ... [150]
- Formatted ... [151]
- Formatted ... [152]
- Formatted ... [153]
- Formatted ... [154]
- Formatted ... [155]
- Formatted ... [156]
- Formatted ... [157]
- Formatted ... [158]
- Formatted ... [159]
- Formatted ... [160]
- Formatted ... [161]
- Formatted ... [162]
- Formatted ... [163]
- Formatted ... [164]
- Formatted ... [165]
- Formatted ... [166]
- Formatted ... [139]
- Formatted ... [167]
- Formatted ... [168]
- Formatted ... [169]
- Formatted ... [170]
- Formatted ... [171]
- Formatted ... [172]
- Formatted ... [173]
- Formatted ... [174]
- Formatted ... [175]
- Formatted ... [176]
- Formatted ... [177]
- Formatted ... [178]
- Formatted ... [179]
- Formatted ... [180]
- Formatted ... [181]
- Formatted ... [182]
- Formatted ... [183]
- Formatted ... [184]

For batch 2, data show that phenolic compound values range from  $39.746 \pm 1.833$  to  $138.042 \pm 0.153$   $\mu\text{g GAE/mg}$ , and flavonoid values from  $40.433 \pm 1.001$  to  $143.33 \pm 8.528$   $\mu\text{g QE/mg}$  (Table 3). The best phenolic compound value ( $138.042 \pm 0.153$ ) was obtained with LB6 (70 % *Lippia multiflora*). This represents an increase of 4.54 % compared with Lm (100 % *Lippiamultiflora*). In terms of flavonoids, contents were improved with LB6 ( $143.33 \pm 8.528$ ) and LB4 ( $119.635 \pm 3.624$ ) combinations.

A curve of phenolic compound and antioxidant content variations has been established.



**Fig. 5:** Phenolic and antioxidant compound content trends for Batch 1 (A) and Batch 2 (B).

An analysis of these curves shows that, depending on the proportions in which species of the same or different botanical genera are combined, PCC values are generally lower than initial levels, although PCC values are higher in some cases (LB4, LB6 and LV6).

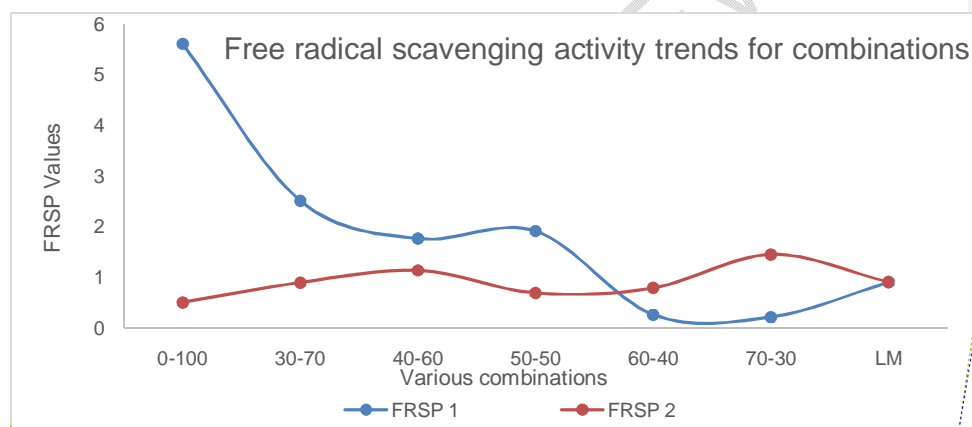
For batch 1, results showed that a blend containing 30 % *Lippia multiflora* (LV2) increased phenolics and flavonoids by an average of 60 % over *Lippia alba* values (Figure 3A and table 3). In contrast, 30% *Lippiaalba* produced an average increase of 15 % at all levels compared with 100 % *Lippia multiflora* (Figure 3A and table 3). Thus, phenolic content evolved in line with the proportion of *Lippia multiflora* in the mixture. However, following the *Lippia multiflora* values, only the association of 30 % *Lippiaalba* leaves with *Lippiamultiflora* leaves resulted in a 20.72 % increase in phenolic compound content (Fig. 3A and Table 3).

Our data shows, for batch, that an addition of 30 % *O. basilicum* increases *Lippia multifloraphenolic* compound content to 4.54 %, flavonoid content to 20.58 % and antioxidant compound content to 26.54 % while equally mixing both plants results in a 20% increase in flavonoid content (Fig 3A and Table 3).

### 3.1.3 Free radical scavenging properties (FRSP) determination

FRSP of different combinations was evaluated by calculating  $IC_{50}$ s.  $IC_{50}$  is the concentration of an extract capable of inhibiting 50% of DPPH free radicals. The values, expressed in units of mass concentration (mg/mL), are shown in the table (Table 3). Data analysis shows that FRSP values range from  $0.208 \pm 6E-05$  mg/mL to  $5.605 \pm 0.876$  mg/mL for batch 1 and from  $0.494 \pm 0.027$  to  $1.441 \pm 0.031$  mg/mL for batch 2. As a reminder, progressively lower  $IC_{50}$  values indicate higher extract activity.

Thus, the LV6 combination showed the best free radical scavenging activity ( $0.2084 \pm 6E-05$  mg/mL). This value is relatively close to that of LV5 ( $0.254 \pm 8E-04$  mg/mL). However, LV6 is 2 times less active than ascorbic acid and 20 times less active than Trolox ( $0.012 \pm 3.828E-05$  mg/mL), two reference antioxidants. Overall results show that FRSP increases with the proportion of *Lippia multiflora* in formulation for batch 1 (Fig. 4). The lowest value was observed in the LV1 combination (100 % *Lippia alba*). An excellent antiradical activity could be observed for a combination LV5 and LV6 (Fig. 4).



Free Radical Scavenging Properties (FRSP) of batch 1 (FRSP 1) and batch 2 (FRSP 2)

Fig. 6: Free radical scavenging activity trends for combinations

### 3.1.4 Antioxidant compounds quantification

Antioxidant levels assessed using the TEAC method ("ABTS" radical cation method) are presented in Table 3. Values are expressed in  $\mu$ g Trolox Equivalent per mg ( $\mu$ g TE/mg). Analysis of the data shows that levels range from  $14.213 \pm 0.082$   $\mu$ g TE/mg for LV1 to  $36.612 \pm 0.47$  ( $\mu$ g TE/mg) for LV6. The combinations which showed the best antioxidant content with ABTS test also showed better free radical scavenging activity. However, with the ABTS method, the variation seems small from one combination to another

Formatted: Font: (Default) +Headings CS, 12 pt, No underline, Font color: Auto

Formatted: Font: (Default) +Headings CS, 12 pt

Formatted: Font: (Default) +Headings CS, 12 pt, No underline, Font color: Auto

Formatted: Font: (Default) +Headings CS, 12 pt, No underline

Formatted: Font: (Default) +Headings CS, 12 pt, No underline, Font color: Auto

Formatted: Font: (Default) +Headings CS, 12 pt

Formatted: Font: (Default) +Headings CS, 12 pt, No underline, Font color: Auto

Formatted: Font: (Default) +Headings CS

Formatted: Font: (Default) +Headings CS, 12 pt, No underline, Font color: Auto

Formatted: Font: (Default) +Headings CS

Formatted: Font: (Default) +Headings CS, 12 pt, No underline, Font color: Auto

Formatted: Font: (Default) +Headings CS, 12 pt

Formatted: Font: (Default) +Headings CS, 12 pt, No underline, Font color: Auto

Formatted: Left

Formatted: Font: (Default) +Headings CS, 12 pt

Formatted: Font: (Default) +Headings CS, 12 pt, No underline, Font color: Auto

Formatted: Font: (Default) +Headings CS, 12 pt

Formatted: Font: (Default) +Headings CS, 12 pt, No underline, Font color: Auto

compared with the DPPH test, where the variation is large. Nevertheless, both tests (DPPH and ABTS) showed similar results in terms of the evolution of values with the proportion of *Lippia multiflora*. These results are in line with the literature. Indeed, numerous studies have shown that antioxidant activity varies with the type of test used [22, 23, 24].

### 3.2 Discussion

Phytochemical screening (Table 2) has shown that, except flavonoids, extracts from each *Lippia* species present opposite chemical profiles. Many factors, such as soil and environmental conditions, can influence enzymatic reactions for secondary metabolites synthesis. [25, 26, 27]. In addition, many research studies on secondary metabolites have shown that chemical solubility differences are also a factor explaining some compounds' absence in some extract [3, 4, 7, 14]. We can also add to this time spent by the solvent in contact with the plant material.

Then, phenolic and flavonoids compounds, antioxidant compounds and free radical scavenging properties (FRSP) was quantified. This study showed that anti-radical activity increases inversely with the proportion *Lippia alba* and *O. basilicum* for batch 1 and batch 2 respectively. In other words, activity improves when we progress to low *Lippia alba* and *O. basilicum* proportions. These observations seem to contradict consumer expectations. Indeed, a preliminary local survey of consumers and herbal tea sellers on the purpose of combining plant organs revealed that the aim was to improve the effect. In the case of *Lippia multiflora* and *Lippia alba* combinations, some consumers emphasized their desire for a systematic increase of *Lippia multiflora* free radical scavenging activity with the addition of *Lippia alba* (verbena).

The results suggest using *Lippia multiflora* leaves separately, or combining them in proportions of 70 % *L. multiflora*. For combinations involving *Ocimum basilicum*, the data suggest mixing *Ocimum basilicum* with *Lippia multiflora* at (50-50) proportion.

Several factors such as the reaction mechanism involved, the structure and content of the molecules in the samples could explain the differences observed [28, 29].

About the reaction mechanism, as the 1,1-diphenyl-1,2-picryl hydrazine molecule is a free radical (possessing an unpaired free electron), an electron transfer mechanism (SET) is required. This suppose that the molecules involved in free radical scavenging are those capable of electron transfer. This excludes antioxidants whose mechanism is hydrogen atom transfer (HAT). Also, the structure of the 1,1-diphenyl-1,2-picryl hydrazine molecule does not favor reactions involving complex molecules. A steric hindrance effect may be required [28, 29, 30]. It would be necessary to quantify antioxidants using other methods. Although several methods exist for the determination of antioxidants in a sample, we chose to use the 2,2'-azinobis-(3-ethylbenzothiazoline-6-sulfonic acid) cation

Formatted: Font: (Default) +Headings CS, 12 pt

Formatted: Font: (Default) +Headings CS, 12 pt, No underline, Font color: Auto

Formatted: Font: (Default) +Headings CS, 12 pt

Formatted: Font: (Default) +Headings CS, 12 pt, No underline, Font color: Auto

Formatted: Font: (Default) +Headings CS, 12 pt

Formatted: Font: (Default) +Headings CS, 12 pt, No underline, Font color: Auto

Formatted: Font: (Default) +Headings CS, 12 pt

Formatted: Font: (Default) +Headings CS, 12 pt, No underline, Font color: Auto

Formatted: Font: (Default) +Headings CS, 12 pt

Formatted: Font: (Default) +Headings CS, 12 pt, No underline, Font color: Auto

Formatted: Font: (Default) +Headings CS, 12 pt

Formatted: Font: (Default) +Headings CS, 12 pt, No underline, Font color: Auto

radical ABTS, which is likely to combine two mechanisms and whose reaction sites seem more accessible. This method, known as the Trolox Equivalent Antioxidant Capacity (TEAC) method, is based on the ability of a molecule to inhibit the  $ABTS^{\bullet+}$  cation radical compared with 6-hydroxy-2,5,7,8-tetramethylchroman-2-carboxylic acid (Trolox), taken as the reference antioxidant. Trolox is the water-soluble form of vitamin E. Data for this test are reported in Tables 3. Similar to the DPPH method, we note that antioxidant content of *Lippia multiflora* increases with small proportion of *L. alba* or *O. basilicum*. Chemical composition may also explain the differences observed. In general, an extract containing high levels of both phenolics and diterpenes has better free radical scavenging properties than one containing only one of the three families [2, 22, 24, 30, 31, 32]. While this rule was successful for some of our combinations, particularly those from same genus species, it was not for combinations from different genus species. Indeed, some studies have demonstrated that at high doses, some phenolic compounds exhibit prooxidant activity [23, 32, 33, 34]. To these literature explanations, we can add intermolecular competition between different molecules in an extract to explain the differences observed in our data. This new explanation could also be very possible. Indeed, a reaction is possible between molecules with labile protons, such as flavonoids, phenolic acids, and alkaloids known for their basic character. The results of these reactions are shown in figure (Fig 7). Alkaloids' free nitrogen doublets can interact with flavonoid hydroxyl protons, alpha-carbonyl protons for flavones and acid protons for phenolic acids, inhibiting their free radical scavenging activity. Also, certain molecules such as anthocyanins are unstable in basic environments (Fig 8).

Formatted: Font: 12 pt, No underline, Font color: Auto

Formatted: Font: 12 pt, No underline, Font color: Auto

Formatted: Font: (Default) +Headings CS, 12 pt, No underline, Font color: Auto

Formatted: Font: (Default) +Headings CS

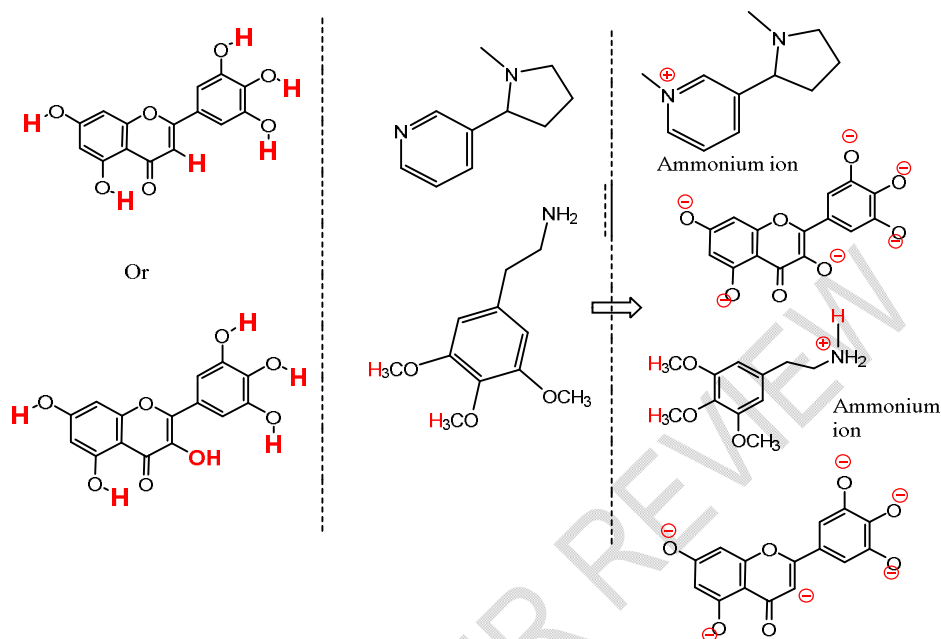
Formatted: Font: (Default) +Headings CS, 12 pt, No underline, Font color: Auto

Formatted: Font: (Default) +Headings CS, 12 pt

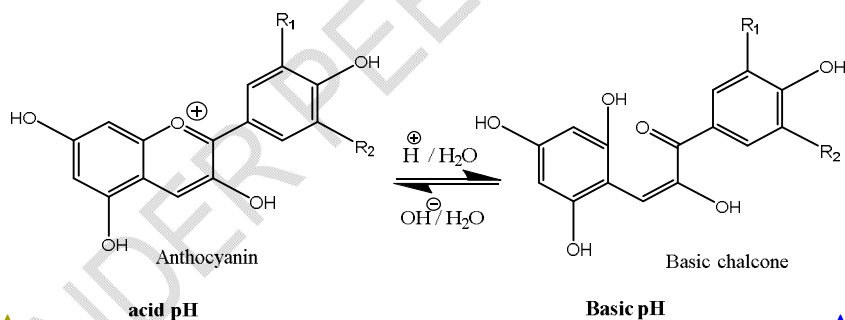
Formatted: Font: (Default) +Headings CS, 12 pt, No underline, Font color: Auto

Formatted: Font: (Default) +Headings CS, 12 pt

Formatted: Font: (Default) +Headings CS



**Fig. 7:** Interaction between molecules in the same extract



**Fig. 8:** Anthocyanin structures depending on pH

Although phenolic compounds are known for their antioxidant power, the mechanism of action, the often-complex structure of these compounds, the synergy of action or the antagonistic effect can influence this antioxidant power [24, 34, 34, 36, 37]. In the literature, numerous studies show that phenolic compounds use several mechanisms to exert their antiradical activities [13, 29, 38]. Among these mechanisms, free radical scavenging and metal chelation are the most common *in vitro* mechanisms of action used by phenolic compounds in free radical scavenging reactions (Fig. 9 and 10).

Formatted: Font: (Default) +Headings CS, No underline, Font color: Auto

Formatted: Font: (Default) +Headings CS

Formatted: Font: (Default) +Headings CS, 12 pt, No underline, Font color: Auto

Formatted: Left

Formatted: Font: (Default) +Headings CS, 12 pt

Formatted: Font: (Default) +Headings CS, 12 pt, No underline, Font color: Auto

Formatted: Font: (Default) +Headings CS, 12 pt

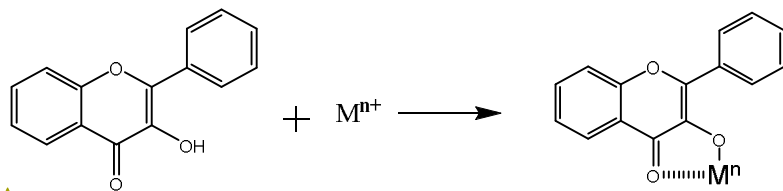
Formatted: Font: (Default) +Headings CS, 12 pt, No underline, Font color: Auto

Formatted: Left

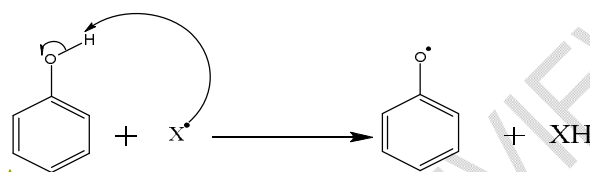
Formatted: Font: (Default) +Headings CS, 12 pt

Formatted: Font: (Default) +Headings CS, 12 pt, No underline, Font color: Auto

Formatted: Font: (Default) +Headings CS, 12 pt

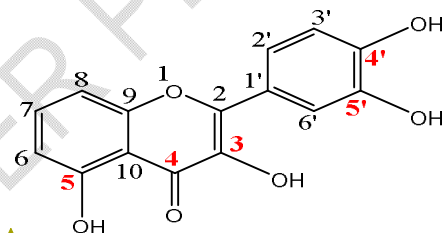


**Fig. 9 :** Metal chelation mechanism of phenolic compounds



**Fig. 10:** Radical capture mechanism of phenolic compounds

However, these mechanisms can be influenced by the structure of the core and the number of hydroxides on the core [8, 1739, 40]. In general, phenolic compounds with flavonol, catechol and resorcinol cores possess excellent antioxidant activity. Trihydroxybenzenes have also been shown to have better activity than dihydroxybenzenes. This is due to the availability of the free doublets of the oxygens in positions 3, 4, 5, 4' and 5' of the flavonoid cores (Fig. 11).



**Fig. 11 :** Flavonoids basic structure

Activity can also be partly attributed to the mesomeric effects of electron delocalization, which takes place on several conjugated doublets, making the aryloxy radicals formed stable (Fig. 10). Activity could also be influenced by the Mac Lafferty rearrangements that some aryloxy derivatives can undergo (Fig 12). Indeed, compounds such as catechol rings, due to their rearrangements, are highly stable after radical-neutralizing reactions [38, 41].

As the reactions involved in free radical scavenging are based on the oxidation-reduction principle, the pH and redox potential of the Ox/Red couples are decisive factors in the

Formatted: Font: (Default) +Headings CS, 12 pt, No underline, Font color: Auto

Formatted: Font: (Default) +Headings CS, 12 pt

Formatted: Font: (Default) +Headings CS, 12 pt, No underline, Font color: Auto

Formatted: Left, Indent: First line: 0"

Formatted: Font: (Default) +Headings CS, 12 pt

Formatted: Font: (Default) +Headings CS, 12 pt, No underline, Font color: Auto

Formatted: Font: (Default) +Headings CS, 12 pt

Formatted: Font: (Default) +Headings CS, 12 pt, No underline, Font color: Auto

Formatted: Left, Indent: First line: 0"

Formatted: Font: (Default) +Headings CS, 12 pt

Formatted: Font: (Default) +Headings CS, 12 pt, No underline, Font color: Auto

Formatted: Font: (Default) +Headings CS, 12 pt

Formatted: Font: (Default) +Headings CS, 12 pt, No underline, Font color: Auto

Formatted: Font: (Default) +Headings CS, 12 pt

Formatted: Font: (Default) +Headings CS, 12 pt, No underline

Formatted: Left

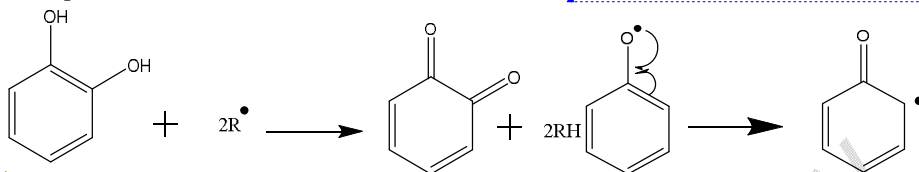
Formatted: Font: (Default) +Headings CS, 12 pt

Formatted: Font: (Default) +Headings CS, 12 pt, Not Bold, No underline, Font color: Auto, English (United States)

Formatted: Font: (Default) +Headings CS, 12 pt

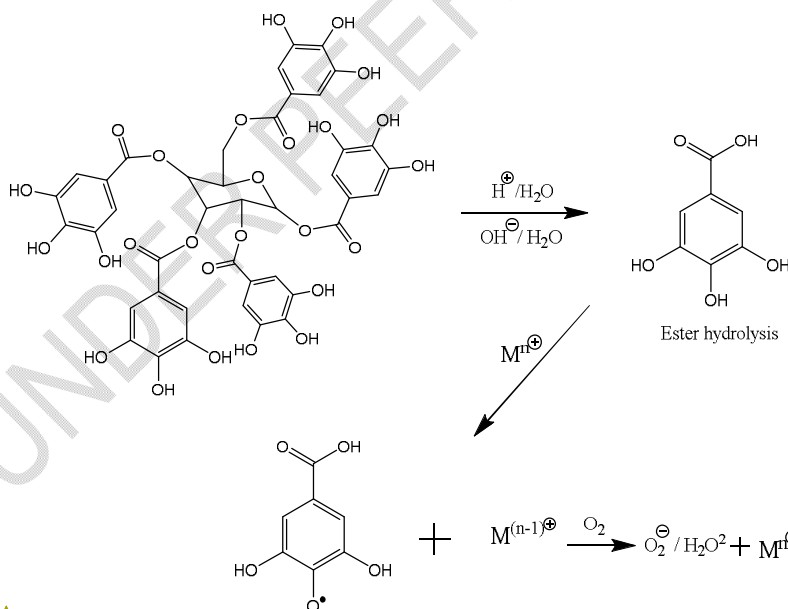
Formatted: Font: (Default) +Headings CS, 12 pt, Not Bold, No underline, Font color: Auto, English (United States)

reaction kinetics. Indeed, high-potential nuclei are less oxidizing than low-potential nuclei, and in a neutral environment, certain nuclei such as rutin and catechin see their redox potential decrease. This makes them more active



**Fig. 12:** Stability effects of aryloxyyls by mesomerization

As extracts are complex mixtures containing several molecules, competition between the synergistic action of certain molecules and the antagonistic effect of others may also be at the root of the differences observed in the values. Indeed, many authors have highlighted the pro-oxidant activity of certain phenolic compounds, notably propylgallate, gallic acid and certain highly reducing polyphenols [23, 33]. A low content of gallic acids or hydrolyzable tannins (Figure 13) and of moderately reducing compounds would therefore be an asset for good antiradical activity



**Figure 13:** Hydrolyzable tannin structure

Formatted: Font: (Default) +Headings CS, 12 pt

Formatted: Font: (Default) +Headings CS, 12 pt, Not Bold, No underline, Font color: Auto

Formatted: Font: (Default) +Headings CS, 12 pt

Formatted: Font: (Default) +Headings CS, 12 pt, No underline, Font color: Auto

Formatted: Left

Formatted: Font: (Default) +Headings CS, 12 pt

Formatted: Font: (Default) +Headings CS, 12 pt, No underline, Font color: Auto

Formatted: Font: (Default) +Headings CS, No underline, Font color: Auto

Formatted: Font: (Default) +Headings CS

Formatted: Font: (Default) +Headings CS, 12 pt, No underline, Font color: Auto

Formatted: Font: (Default) +Headings CS, 12 pt

Formatted: Font: (Default) +Headings CS, 12 pt, No underline, Font color: Auto

Formatted: Left

Formatted: Font: (Default) +Headings CS, 12 pt

Formatted: Font: (Default) +Headings CS

### 3.3 CONCLUSION

This work, which assessed the effect of plant association on free radical scavenging activity and phenolic compound content, is a first in our country. Two batches of mixtures were used, one combining species from the same genus (*Lippia multiflora*/*Lippia alba*) and the other combining species from different genera (*Lippia multiflora*/*Ocimum basilicum*) in the respective proportions of (30:70); (40:60); (50:50); (60:40); and (70:30). The results showed that the plants individually contain considerable levels of phenolic compounds, flavonoids and antioxidants, and have good anti-free radical activity. However, in some cases, their combination resulted in an approximate 30% reduction in content and a 23% reduction in anti-free radical activity compared with the initial values of the individual plants. This shows that, to improve anti-free radical efficacy and the content of anti-free radical compounds, the combination of species from the same genus would be recommended, but at a lower proportion (20%) than that of species from different genera. In fact, antagonistic effects were more pronounced when involving different species than when involving species of the same genus.

### REFERENCES

1. Abdoulaye Cisse, Mevanly Ouattara, Estelle Anny N'guessan et Joël Emmanuel N'gouanAbrou. 2020. Diversité végétale et usages des plantes dans une zone de savane soudanienne: Cas de la localité de Ferkessédougou (Nord, Côte d'Ivoire). Int. J. Biol. Chem. Sci. 14 (8): 2807-2825 <https://dx.doi.org/10.4314/ijbcs.v14i8.13>
2. Anjali S and Sheetal S 2013. Phytochemical Analysis and Free Radical Scavenging Potential of Herbal and Medicinal Plant Extracts. Journal of Pharmacognosy and Phytochemistry. 2 (4): 22-29.
3. Constantin M. DABIRE, Remy K. BATIONO, Adama HEMA, Roger C. H. NEBIE, Eloi PALE, S. P. DHANABA et Mouhoussine NACRO. 2015. Total phenolics content, flavonoids profiling and antioxidant activity of *Lippia multiflora* leaves extracts from Burkina Faso *Pelagia Research Library Asian Journal of Plant Science and Research*. 5(5):28-33.
4. Yougoubo Abdoulaye, Dabire Constantin M, Bationo K. Rémy, Hema Adama, Pale Eloi, Nebie C. H. Roger c and S. P. Danhabal. 2021. Phytochemical Screening, Total Phenolics Content and Antioxydants Potential of Different parts of *Grangeamaderaspatana* from Burkina Faso. *International Research Journal of Pure & Applied Chemistry* 22(10): 36-44.
5. Hildebert Wagner, Rudolf Bauer, Dieter Melchart and Anton Staudinger. 2016. Chromatographic Fingerprint Analysis of Herbal Medicines : Thin-Layer and High

Formatted: Font: (Default) +Headings CS, 12 pt, No underline, Font color: Auto

Formatted: Font: (Default) +Headings CS, 12 pt

Formatted: Font: (Default) +Headings CS, 12 pt, No underline, Font color: Auto

Formatted: Font: (Default) +Headings CS, 12 pt

Comment [CCP2]: References need to arrange according to Journal suggested format, Add missing Doi number if recommended also add same color for them

Formatted: Font: (Default) +Headings CS, 12 pt, Bold, No underline, Font color: Auto, All

Formatted: Font: (Default) +Headings CS, 12 pt

Formatted: Font: (Default) +Headings CS, 12 pt, French (France)

Formatted: Font: (Default) +Headings CS, 12 pt

Formatted: Font: (Default) +Headings CS, 12 pt, No underline, Font color: Auto, French (France)

Formatted: Font: (Default) +Headings CS, 12 pt

Formatted: Font: (Default) +Headings CS, 12 pt, No underline, Font color: Auto, French (France)

Formatted: Font: (Default) +Headings CS, 12 pt

Formatted: Font: (Default) +Headings CS, 12 pt, No underline, Font color: Auto, French (France)

Formatted: Font: (Default) +Headings CS, 12 pt

Formatted: Font: (Default) +Headings CS, 12 pt, No underline, Font color: Auto, French (France)

Performance Liquid Chromatography of Chinese Drugs. eBook, Edition Springer  
<https://10.1007/978-3-319-32328-2>

6. Brand-Williams, W., Cuvelier, M.E. and Berset, C.L.W.T. (1995) Use of a Free Radical Method to Evaluate Antioxidant Activity. *LWT-Food Science and Technology*, 28, 25-30. [http://dx.doi.org/10.1016/S0023-6438\(95\)80008-5](http://dx.doi.org/10.1016/S0023-6438(95)80008-5)
7. Rémy K. Bationo, Constantin M. Dabiré, Yougoubo Abdoulaye, Boukaré Kaboré, Ousséni Sawadogo, Moumouni Koala, Eloi Palé and Roger H. Ch. Nébié. 2023. Major anthocyanin quantification, free radical scavenging properties and structural identification in *Cymbopogon giganteus* extracts. *African Journal of Pure and Applied Chemistry*. 17(3) : 32-46. <https://doi.org/10.5897/AJPAC2023.0902>
8. Gafar T. Atere, Akinloye OA, Ugbaja RN, Ojo DA and Dealtry G. 2018. In vitro antioxidant capacity and free radical scavenging evaluation of standardized extract of *Costus afer* leaf, *Food Science and Human Wellness* 7(4), 266-272, <https://doi.org/10.1016/j.fshw.2018.09.004>
9. Nihal TY, Sedat V, Ferda S, Gokce P. 2007. Effect of Extraction Conditions on Measured Total Polyphenol Contents and Antioxidant and Antibacterial Activities of Black Tea. *Molecules*, 12 : 484-496. <https://doi.org/10.3390/12030484>
10. Zhishen J, Mengcheng T, Jeanming W. The determination of flavonoid contents in mulberry and their scavenging effects on superoxide radicals. *Food Chem.* 1999 ; 64(4) : 555-59. [https://doi.org/10.1016/s0308-8146\(98\)00102-2](https://doi.org/10.1016/s0308-8146(98)00102-2)
11. Miller N J., Rice-Evans C., M J Davies, V Gopinathan, A Milner. 1993. A novel method for measuring antioxidant capacity and its application to monitoring the antioxidant status in premature neonates. *Clin Sci (Lond)* (1993) 84 (4): 407-412. <https://doi.org/10.1042/cs0840407>
12. Do, T.K.T., Clark, K., Christen, P. *et al.* 2020. Quality assessment of *Sclerocarya birrea* leaves and leaves products from Burkina Faso based on fingerprinting using HPTLC. *JPC-J Planar Chromat* 33, 439-448. <https://doi.org/10.1007/s00764-020-00058-5>
13. Day A-J., Bao Y., Morgan M-R-A. and Williamson G. 2000. Conjugation position of quercetin glucuronides and effect on biological activity. *Free Radical Biology and Medicine*. 29(12) : 1234-1243.
14. Hugues Alain N'guessan, Déliko Camille Evelyne Dago, Janat Akhanovna Mamyrbékova-Békro et Yves Alain Békro. 2011. CCM d'extraits sélectifs de 10 plantes utilisées dans le traitement traditionnel de l'hypertension artérielle en Côte d'Ivoire. *European Journal of Scientific Research*, 66 (4), 575-585.
15. Enot, M.M., Sabesaje, R.D., Presores, G.M.S. *et al.* 2022. Development of an identification method for fern extracts using high-performance thin-layer chromatography (HPTLC). *JPC-J Planar Chromat* 35, 491-500. <https://doi.org/10.1007/s00764-022-00204-1>

Formatted: Font: (Default) +Headings CS, 12 pt, French (France)

Formatted: Font: (Default) +Headings CS, 12 pt

Formatted: Font: (Default) +Headings CS, 12 pt, No underline, Font color: Auto, French (France)

Formatted: Font: (Default) +Headings CS, 12 pt, French (France)

Formatted: Font: (Default) +Headings CS, 12 pt

Formatted: Font: (Default) +Headings CS, 12 pt, No underline, Font color: Auto, French (France)

Formatted: Font: (Default) +Headings CS, 12 pt, French (France)

Formatted: Font: (Default) +Headings CS, 12 pt

Formatted: Font: (Default) +Headings CS, 12 pt, No underline, Font color: Auto, French (France)

Formatted: Font: (Default) +Headings CS, 12 pt, French (France)

Formatted: Font: (Default) +Headings CS, 12 pt

Formatted ... [279]

Formatted ... [280]

Formatted ... [281]

Formatted ... [282]

Formatted ... [283]

Formatted ... [284]

Formatted ... [285]

Formatted ... [286]

Formatted ... [287]

Formatted ... [288]

Formatted ... [289]

Formatted ... [290]

Formatted ... [291]

Formatted ... [292]

Formatted ... [293]

Formatted ... [294]

Formatted ... [295]

Formatted ... [296]

Formatted ... [297]

Formatted ... [298]

Formatted ... [299]

16. Singh, S., Mishra, S.B., Mukerjee, A. 2021. HPTLC Fingerprinting Analysis of Phytoconstituents from Indigenous Medicinal Plants. In: Mandal, S.C., Chakraborty, R., Sen, S. (eds) Evidence Based Validation of Traditional Medicines. Springer, Singapore. [https://doi.org/10.1007/978-981-15-8127-4\\_17](https://doi.org/10.1007/978-981-15-8127-4_17).
17. Fumi T, Yushi A, Tadayuki M, Saito N, Shinoda K, Kazuhisa K, Kenjiro T, Honda T. 2012. Copigmentation with Acylated Anthocyanin and Kaempferol Glycosides in Violet and Purple Flower Cultivars of *Aubrietaculorum* (Brassicaceae) Journal of the Japanese Society for Horticultural Science 81(3) :275-284. [www.jstage.jst.go.jp/browse/jjshs1](http://www.jstage.jst.go.jp/browse/jjshs1).
18. Hutabarat RP, Xiao YD, Wu H, Wang J, Li DJ, Huang WY. 2019. Identification of Anthocyanins and Optimization of Their Extraction from Rabbiteye Blueberry Fruits in Nanjing. J Food Qual.;2019:1–10. <https://doi.org/10.1155/2019/6806790>
19. Latif Gachkar., Davood Yadegari., Mohammad Bagher Rezaei., Masood Taghizadeh., Shakiba Alipoor Astaneh., Iraj Rasooli. 2007. Chemical and biological characteristics of *Cuminum cyminum* and *Rosmarinus officinalis* essential oils. Food Chemistry 102(3) : 898–904. <https://doi.org/10.1016/j.foodchem.2006.06.035>.
20. Wagner H and Bladt S. 1996. Plant and analysis, A Thin Layer Chromatography Atlas. Second edition, Munich.
21. Qingguo T., K. Izabela, Schwartz, and J. And Steven. 2005. “Probing Anthocyanin Profiles in Purple Sweet Potato Cell Line (*Ipomoea batatas* L.) by High-Performance Liquid Chromatography and Electrospray Ionization Tandem Mass Spectrometry” *J. Agric. Food Chem.* 53(16), 6503–6509. <https://doi.org/10.1021/jf050671m>.
22. Baliyan, S. ; Mukherjee, R. ; Priyadarshini, A. ; Vibhuti, A. ; Gupta, A. ; Pandey, R. P. and Chang, C.M. 2022. Determination of Antioxidants by DPPH Radical Scavenging Activity and Quantitative Phytochemical Analysis of *Ficus religiosa*. *Molecules* 2022, 27, 1326. <https://doi.org/10.3390/molecules27041326>.
23. Fukumoto L-R. and Mazza G. 2000. Assessing antioxidant and prooxidant activities of phenolic compounds. *Journal of Agriculture and Food Chemistry.* 48 : 3597-3604 <https://doi.org/10.1021/jf000220w>.
24. Laila Jafri, Samreen Saleem, Ihsan-ul-Haq, Nazif Ullah and Bushra Mirza. 2017. In vitro assessment of antioxidant potential and determination of polyphenolic compounds of *Hedera nepalensis* K. Koch. *Arabian Journal of Chemistry.* 10 : S3699-S3706. <https://doi.org/10.1016/j.arabjc.2014.05.002>.
25. Izadi Z, Biabani A, Sabouri H, Bahreininejad B, 2022 The effect of different levels of urea and planting density on the phytochemical characteristics, alkaloids, and yield of the medicinal plant jimsonweed (*Datura stramonium* L.) *Crop Science.* 62(3) : 1264-1276. <https://doi.org/10.1002/csc2.20733>.

Formatted: Font: (Default) +Headings CS, 12 pt, No underline, Font color: Auto, French (France)

Formatted: Font: (Default) +Headings CS, 12 pt, French (France)

Formatted: Font: (Default) +Headings CS, 12 pt

Formatted: Font: (Default) +Headings CS, 12 pt, No underline, Font color: Auto, French (France)

Formatted: Font: (Default) +Headings CS, 12 pt, French (France)

Formatted: Font: (Default) +Headings CS, 12 pt

Formatted: Font: (Default) +Headings CS, 12 pt, No underline, Font color: Auto

Formatted: Font: (Default) +Headings CS, 12 pt

Formatted: Font: (Default) +Headings CS, 12 pt, No underline, Font color: Auto, French (France)

Formatted: Font: (Default) +Headings CS, 12 pt, French (France)

Formatted: Font: (Default) +Headings CS, 12 pt

Formatted: Font: (Default) +Headings CS, 12 pt, No underline, Font color: Auto, French (France)

Formatted: Font: (Default) +Headings CS, 12 pt

Formatted: Font: (Default) +Headings CS, 12 pt, No underline, Font color: Auto, French (France)

Formatted: Font: (Default) +Headings CS, 12 pt, French (France)

Formatted: Font: (Default) +Headings CS, 12 pt

Formatted ... [300]

Formatted ... [301]

Formatted ... [302]

Formatted ... [303]

Formatted ... [304]

Formatted ... [305]

Formatted ... [306]

Formatted ... [307]

Formatted ... [308]

Formatted ... [309]

Formatted ... [310]

Formatted ... [311]

26. Iris Hinneburg, H.J. Damien Dorman, Raimo Hiltunen. 2006. Antioxidant activities of extracts from selected culinary herbs and spices. *Food Chemistry* 97 : 122–129. <https://doi.org/10.1016/j.foodchem.2005.03.028>
27. Amdoun R, Khelifi L, Khelifi-Slaoui M, Amrounel S, Benyoussef EH, Dao VT, Gontier E. 2009. Influence of minerals and elicitation on *Datura stramonium* L. tropane alkaloid production : modelization of the in vitro biochemical response. *Plant Science*. 117(2) : 81-87. <https://doi.org/10.1016/j.plantsci.2009.03.016>
28. Noba A, Hema A, Kabré E, Bazie SR, Ouôba P, Dabiré CM, Bationo RK, Koala M, Palé E, Mouhoussine N. 2022. Determination of the Radical Scavenging Activities and Identification of Anthocyanins from *Hexalobus monopetalus* Ripe Fruits. *J. of Pure and Applied Chem Research* 11(1) : 54-70. <http://dx.doi.org/10.21776/ub.jpacr.2022.011.01.608>
29. Heim K.E., Tagliaferro A.R., Bobilya D.J. 2002. Flavonoid antioxidants : chemistry, metabolism and structure-activity relationships. *Journal of Nutritional Biochemistry*. 13 : 572- 584 [https://doi.org/10.1016/s0955-2863\(02\)00208-5](https://doi.org/10.1016/s0955-2863(02)00208-5)
30. Stephanie Dudonne, Xavier Vitrac, Philippe Coutiere, Marion Woillez and Jean-Michel Merillon. 2009 Comparative Study of Antioxidant Properties and Total Phenolic Content of 30 Plant Extracts of Industrial Interest Using DPPH, ABTS, FRAP, SOD and ORAC Assays. *J. Agric. Food Chem.* 2009, 57, 1768–1774. <https://doi.org/10.1021/jf803011r>
31. Sushama A. Marathe, V. Rajalakshmi, Sahayog N. Jamdar, Arun Sharma. 2011. Comparative study on antioxidant activity of different varieties of commonly consumed legumes in India. *Food and Chemical Toxicology* 49(9) : 2005–2012. <https://doi.org/10.1016/j.fct.2011.04.039>
32. Xu Zhao, Jian Shen, Kyung Ja Chang and Sung Hoon Kim. 2014. Comparative Analysis of Antioxidant Activity and Functional Components of the Ethanol Extract of Lotus (*Nelumbo nucifera*) from Various Growing Regions. *J. Agric. Food Chem.* 62 : 6227–6235. <https://doi.org/10.1021/jf501644t>
33. Yen G.C., Duh P.D., and Tsai H.L. 2002. Antioxidant and pro-oxidant properties of ascorbic acid and gallic acid. *Journal of Food Chemistry*. 79(3) : 307-313.
34. Okezie I. Aruoma, Murcia A., Butler J., Halliwell B. 1993. Evaluation of the Antioxidant and Prooxidant Actions of Gallic Acid and Its Derivatives. *Journal of Agriculture and Food Chemistry*. 41(11) : 1880-1885 <https://doi.org/10.1021/jf00035a014>
35. Honghai Hu, Zhenya Zhang, Zhongfang Lei, Yingnan Yang, and Norio Sugiura. 2009. Comparative study of antioxidant activity and antiproliferative effect of hot water and ethanol extracts from the mushroom *Inonotus obliquus*. *Journal of Bioscience and Bioengineering* 107 (01) 42–48. <https://doi.org/10.1016/j.jbiosc.2008.09.004>

Formatted: Font: (Default) +Headings CS, 12 pt, No underline, Font color: Auto, French (France)

Formatted: Font: (Default) +Headings CS, 12 pt, French (France)

Formatted: Font: (Default) +Headings CS, 12 pt

Formatted: Font: (Default) +Headings CS, 12 pt, French (France)

Formatted: Font: (Default) +Headings CS, 12 pt

Formatted: Font: (Default) +Headings CS, 12 pt, No underline, Font color: Auto, French (France)

Formatted: Font: (Default) +Headings CS, 12 pt, French (France)

Formatted: Font: (Default) +Headings CS, 12 pt

Formatted: Font: (Default) +Headings CS, 12 pt, No underline, Font color: Auto, French (France)

Formatted: Font: (Default) +Headings CS, 12 pt, French (France)

Formatted: Font: (Default) +Headings CS, 12 pt

Formatted: Font: (Default) +Headings CS, 12 pt, No underline, Font color: Auto, French (France)

Formatted: Font: (Default) +Headings CS, 12 pt, French (France)

Formatted: Font: (Default) +Headings CS, 12 pt

Formatted: Font: (Default) +Headings CS, 12 pt, No underline, Font color: Auto, French (France)

Formatted: Font: (Default) +Headings CS, 12 pt, French (France)

Formatted ... [312]

Formatted ... [313]

Formatted ... [314]

Formatted ... [315]

Formatted ... [316]

Formatted ... [317]

Formatted ... [318]

Formatted ... [319]

Formatted ... [320]

Formatted ... [321]

Formatted ... [322]

Formatted ... [323]

36. Saha M. R., Hasan S. M. R., R. Akter, M. M. Hossain, M. S. Alamb, M. A. Alam and M. E. H. Mazumder. 2008. In vitro free radical scavenging activity of methanolextract of the leaves of mimusopselengilinn. *Bangl. J. Vet. Med.* 6(2) : 197–202.
37. Kaboré S. Dominique, AdamaHéma, Elie Kabré, Raoul Bazié, Abdoul Karim Sakira, Moumouni Koala, Paul-André KoussaoSomé, Eloi Palé, Touridomon Issa Somé, Pierre Duez and MouhousseineNacro. 2021. Identification of Five AcylatedAnthocyanins and Determination of Antioxidant Contents of Total Extracts of a Purple-FleshedIpomoeabatatas L. VarietyGrown in Burkina Faso. *International Research Journal of Pure &AppliedChemistry* 22(7): 48-66, Article no.IRJPAC.73800.
38. Leopoldini M., Russo N., Toscano M. 2011. The molecular basis of workingmechanism of naturalpolyphenolicantioxidants. *Food Chemistry.* 125(2) : 288-306. <https://doi.org/10.1016/j.foodchem.2010.08.012>
39. Lee M.J, Park J.S, Choi D.S, Jung M.Y. 2013. Characterization and quantitation of anthocyanins in purplefleshedsweetpotatoescultivated in Korea by HPLC-DAD and HPLCpESI-QTOF-MS/MS. *Journal of Agricultural and Food Chemistry* 61(12) :3148-3158.
40. Hodek P, Trefil P., and Stiborova M 2002. Flavonoids-potent and versatile biologically active compound interactingwith cytochromes P450. *Chemico-Biological Interactions* 139(1) :1-21. [https://doi.org/10.1016/s0009-2797\(01\)00285-x](https://doi.org/10.1016/s0009-2797(01)00285-x)
41. Jovanovic S.V., Steenken S., Tosic M., Marjanovic B., Simic M.G. 1994. Flavonoids as antioxidants. *Journal of the American Chemistry Society.* 116 : 4846-4851. <https://doi.org/10.1021/ja00090a032>

Formatted: Font: (Default) +Headings CS, 12 pt, No underline, Font color: Auto, French (France)

Formatted: Font: (Default) +Headings CS, 12 pt

Formatted: Font: (Default) +Headings CS, 12 pt, No underline, Font color: Auto, French (France)

Formatted: Font: (Default) +Headings CS, 12 pt

Formatted: Font: (Default) +Headings CS, 12 pt, No underline, Font color: Auto, French (France)

Formatted: Font: (Default) +Headings CS, 12 pt, French (France)

Formatted: Font: (Default) +Headings CS, 12 pt

Formatted: Font: (Default) +Headings CS, 12 pt, No underline, Font color: Auto, French (France)

Formatted: Font: (Default) +Headings CS, 12 pt

Formatted: Font: (Default) +Headings CS, 12 pt, No underline, Font color: Auto, French (France)

Formatted: Font: (Default) +Headings CS, 12 pt, French (France)

Formatted: Font: (Default) +Headings CS, 12 pt

Formatted: Font: (Default) +Headings CS, 12 pt, No underline, Font color: Auto, French (France)

Formatted: Font: (Default) +Headings CS, 12 pt, French (France)

Formatted: Font: (Default) +Headings CS, 12 pt

UNDER REVIEW







Page 9: [32] Formatted	Campus CRO PKLHBZ	9/21/2024 9:12:00 AM
Font: (Default) +Headings CS, 12 pt		
Page 9: [33] Formatted	Campus CRO PKLHBZ	9/21/2024 9:12:00 AM
Font: (Default) +Headings CS, 12 pt		
Page 9: [33] Formatted	Campus CRO PKLHBZ	9/21/2024 9:12:00 AM
Font: (Default) +Headings CS, 12 pt		
Page 9: [34] Formatted	Campus CRO PKLHBZ	9/21/2024 9:12:00 AM
Font: (Default) +Headings CS, 12 pt		
Page 9: [34] Formatted	Campus CRO PKLHBZ	9/21/2024 9:12:00 AM
Font: (Default) +Headings CS, 12 pt		
Page 9: [35] Formatted	Campus CRO PKLHBZ	9/21/2024 9:12:00 AM
Font: (Default) +Headings CS, 12 pt		
Page 9: [35] Formatted	Campus CRO PKLHBZ	9/21/2024 9:12:00 AM
Font: (Default) +Headings CS, 12 pt		
Page 9: [36] Formatted	Campus CRO PKLHBZ	9/21/2024 9:12:00 AM
Font: (Default) +Headings CS, 12 pt		
Page 9: [36] Formatted	Campus CRO PKLHBZ	9/21/2024 9:12:00 AM
Font: (Default) +Headings CS, 12 pt		
Page 9: [37] Formatted	Campus CRO PKLHBZ	9/21/2024 9:12:00 AM
Font: (Default) +Headings CS, 12 pt		
Page 9: [37] Formatted	Campus CRO PKLHBZ	9/21/2024 9:12:00 AM
Font: (Default) +Headings CS, 12 pt		
Page 9: [37] Formatted	Campus CRO PKLHBZ	9/21/2024 9:12:00 AM
Font: (Default) +Headings CS, 12 pt		
Page 9: [38] Formatted	Campus CRO PKLHBZ	9/21/2024 9:12:00 AM
Font: (Default) +Headings CS, 12 pt, No underline, Font color: Auto		
Page 9: [38] Formatted	Campus CRO PKLHBZ	9/21/2024 9:12:00 AM
Font: (Default) +Headings CS, 12 pt, No underline, Font color: Auto		
Page 9: [39] Formatted	Campus CRO PKLHBZ	9/21/2024 9:12:00 AM
Font: (Default) +Headings CS, 12 pt, No underline, Font color: Auto		
Page 9: [39] Formatted	Campus CRO PKLHBZ	9/21/2024 9:12:00 AM
Font: (Default) +Headings CS, 12 pt, No underline, Font color: Auto		
Page 9: [40] Formatted	Campus CRO PKLHBZ	9/21/2024 9:12:00 AM
Font: (Default) +Headings CS, 12 pt, No underline, Font color: Auto		
Page 9: [40] Formatted	Campus CRO PKLHBZ	9/21/2024 9:12:00 AM
Font: (Default) +Headings CS, 12 pt, No underline, Font color: Auto		
Page 10: [41] Formatted	Campus CRO PKLHBZ	9/21/2024 9:12:00 AM
Font: (Default) +Headings CS, 12 pt, French (France)		
Page 10: [42] Formatted	Campus CRO PKLHBZ	9/21/2024 9:12:00 AM
Font: (Default) +Headings CS, 12 pt, No underline, Font color: Auto		
Page 10: [43] Formatted	Campus CRO PKLHBZ	9/21/2024 9:12:00 AM

Page 10: [44] Formatted	Campus CRO PKLHBZ	9/21/2024 9:12:00 AM
Font: (Default) +Headings CS, 12 pt, Font color: Auto, French (France)		
Page 10: [45] Formatted	Campus CRO PKLHBZ	9/21/2024 9:12:00 AM
Font: (Default) +Headings CS, 12 pt, French (France)		
Page 10: [46] Formatted	Campus CRO PKLHBZ	9/21/2024 9:12:00 AM
Font: (Default) +Headings CS, 12 pt		
Page 10: [47] Formatted	Campus CRO PKLHBZ	9/21/2024 9:12:00 AM
Font: (Default) +Headings CS, 12 pt, No underline, Font color: Auto		
Page 10: [47] Formatted	Campus CRO PKLHBZ	9/21/2024 9:12:00 AM
Font: (Default) +Headings CS, 12 pt, No underline, Font color: Auto		
Page 10: [48] Formatted	Campus CRO PKLHBZ	9/21/2024 9:12:00 AM
Font: (Default) +Headings CS, 12 pt, No underline, Font color: Auto		
Page 10: [49] Formatted	Campus CRO PKLHBZ	9/21/2024 9:12:00 AM
Font: (Default) +Headings CS, 12 pt, French (France)		
Page 10: [50] Formatted	Campus CRO PKLHBZ	9/21/2024 9:12:00 AM
Font: (Default) +Headings CS, 12 pt, No underline, Font color: Auto		
Page 10: [50] Formatted	Campus CRO PKLHBZ	9/21/2024 9:12:00 AM
Font: (Default) +Headings CS, 12 pt, No underline, Font color: Auto		
Page 10: [50] Formatted	Campus CRO PKLHBZ	9/21/2024 9:12:00 AM
Font: (Default) +Headings CS, 12 pt, No underline, Font color: Auto		
Page 10: [50] Formatted	Campus CRO PKLHBZ	9/21/2024 9:12:00 AM
Font: (Default) +Headings CS, 12 pt, No underline, Font color: Auto		
Page 10: [50] Formatted	Campus CRO PKLHBZ	9/21/2024 9:12:00 AM
Font: (Default) +Headings CS, 12 pt, No underline, Font color: Auto		
Page 10: [50] Formatted	Campus CRO PKLHBZ	9/21/2024 9:12:00 AM
Font: (Default) +Headings CS, 12 pt, No underline, Font color: Auto		
Page 10: [50] Formatted	Campus CRO PKLHBZ	9/21/2024 9:12:00 AM
Font: (Default) +Headings CS, 12 pt, No underline, Font color: Auto		
Page 10: [50] Formatted	Campus CRO PKLHBZ	9/21/2024 9:12:00 AM
Font: (Default) +Headings CS, 12 pt, No underline, Font color: Auto		
Page 10: [51] Formatted	Campus CRO PKLHBZ	9/21/2024 9:12:00 AM
Font: (Default) +Headings CS, 12 pt, No underline, Font color: Auto		
Page 10: [52] Formatted	Campus CRO PKLHBZ	9/21/2024 9:12:00 AM
Font: (Default) +Headings CS, 12 pt, French (France)		
Page 10: [53] Formatted	Campus CRO PKLHBZ	9/21/2024 9:12:00 AM
Font: (Default) +Headings CS, 12 pt, No underline, Font color: Auto		
Page 10: [53] Formatted	Campus CRO PKLHBZ	9/21/2024 9:12:00 AM

Page 10: [54] Formatted	Campus CRO PKLHBZ	9/21/2024 9:12:00 AM
Font: (Default) +Headings CS, 12 pt, No underline, Font color: Auto		
Page 10: [54] Formatted	Campus CRO PKLHBZ	9/21/2024 9:12:00 AM
Font: (Default) +Headings CS, 12 pt, No underline, Font color: Auto		
Page 10: [55] Formatted	Campus CRO PKLHBZ	9/21/2024 9:12:00 AM
Font: (Default) +Headings CS, 12 pt, No underline, Font color: Auto		
Page 10: [56] Formatted	Campus CRO PKLHBZ	9/21/2024 9:12:00 AM
Font: (Default) +Headings CS, 12 pt, French (France)		
Page 10: [57] Formatted	Campus CRO PKLHBZ	9/21/2024 9:12:00 AM
Font: (Default) +Headings CS, 12 pt, No underline, Font color: Auto		
Page 10: [57] Formatted	Campus CRO PKLHBZ	9/21/2024 9:12:00 AM
Font: (Default) +Headings CS, 12 pt, No underline, Font color: Auto		
Page 10: [58] Formatted	Campus CRO PKLHBZ	9/21/2024 9:12:00 AM
Font: (Default) +Headings CS, 12 pt, No underline, Font color: Auto		
Page 10: [58] Formatted	Campus CRO PKLHBZ	9/21/2024 9:12:00 AM
Font: (Default) +Headings CS, 12 pt, No underline, Font color: Auto		
Page 10: [59] Formatted	Campus CRO PKLHBZ	9/21/2024 9:12:00 AM
Font: (Default) +Headings CS, 12 pt, No underline, Font color: Auto		
Page 10: [60] Formatted	Campus CRO PKLHBZ	9/21/2024 9:12:00 AM
Font: (Default) +Headings CS, 12 pt, French (France)		
Page 10: [61] Formatted	Campus CRO PKLHBZ	9/21/2024 9:12:00 AM
Font: (Default) +Headings CS, 12 pt, No underline, Font color: Auto		
Page 10: [61] Formatted	Campus CRO PKLHBZ	9/21/2024 9:12:00 AM
Font: (Default) +Headings CS, 12 pt, No underline, Font color: Auto		
Page 10: [62] Formatted	Campus CRO PKLHBZ	9/21/2024 9:12:00 AM
Font: (Default) +Headings CS, 12 pt, No underline, Font color: Auto		
Page 10: [62] Formatted	Campus CRO PKLHBZ	9/21/2024 9:12:00 AM
Font: (Default) +Headings CS, 12 pt, No underline, Font color: Auto		
Page 10: [63] Formatted	Campus CRO PKLHBZ	9/21/2024 9:12:00 AM
Font: (Default) +Headings CS, 12 pt, No underline, Font color: Auto		
Page 10: [64] Formatted	Campus CRO PKLHBZ	9/21/2024 9:12:00 AM
Font: (Default) +Headings CS, 12 pt, French (France)		
Page 10: [65] Formatted	Campus CRO PKLHBZ	9/21/2024 9:12:00 AM
Font: (Default) +Headings CS, 12 pt, No underline, Font color: Auto		
Page 10: [65] Formatted	Campus CRO PKLHBZ	9/21/2024 9:12:00 AM
Font: (Default) +Headings CS, 12 pt, No underline, Font color: Auto		
Page 10: [66] Formatted	Campus CRO PKLHBZ	9/21/2024 9:12:00 AM
Font: (Default) +Headings CS, 12 pt, No underline, Font color: Auto		
Page 10: [66] Formatted	Campus CRO PKLHBZ	9/21/2024 9:12:00 AM
Font: (Default) +Headings CS, 12 pt, No underline, Font color: Auto		
Page 10: [67] Formatted	Campus CRO PKLHBZ	9/21/2024 9:12:00 AM



Page 11: [82] Formatted	Campus CRO PKLHBZ	9/21/2024 9:12:00 AM
Font: (Default) +Headings CS, 12 pt, French (France)		
Page 11: [83] Formatted	Campus CRO PKLHBZ	9/21/2024 9:12:00 AM
Font: (Default) +Headings CS, 12 pt, No underline, Font color: Auto		
Page 11: [84] Formatted	Campus CRO PKLHBZ	9/21/2024 9:12:00 AM
Font: 12 pt, No underline, Font color: Auto		
Page 11: [85] Formatted	Campus CRO PKLHBZ	9/21/2024 9:12:00 AM
Font: 12 pt, No underline, Font color: Auto		
Page 11: [86] Formatted	Campus CRO PKLHBZ	9/21/2024 9:12:00 AM
Font: (Default) +Headings CS, 12 pt, No underline, Font color: Auto		
Page 11: [87] Formatted	Campus CRO PKLHBZ	9/21/2024 9:12:00 AM
Font: 12 pt, No underline, Font color: Auto		
Page 11: [88] Formatted	Campus CRO PKLHBZ	9/21/2024 9:12:00 AM
Font: 12 pt, No underline, Font color: Auto		
Page 11: [89] Formatted	Campus CRO PKLHBZ	9/21/2024 9:12:00 AM
Font: (Default) +Headings CS, 12 pt, No underline, Font color: Auto		
Page 11: [90] Formatted	Campus CRO PKLHBZ	9/21/2024 9:12:00 AM
Font: 12 pt, No underline, Font color: Auto		
Page 11: [91] Formatted	Campus CRO PKLHBZ	9/21/2024 9:12:00 AM
Font: 12 pt, No underline, Font color: Auto		
Page 11: [92] Formatted	Campus CRO PKLHBZ	9/21/2024 9:12:00 AM
Font: (Default) +Headings CS, 12 pt, No underline, Font color: Auto		
Page 11: [93] Formatted	Campus CRO PKLHBZ	9/21/2024 9:12:00 AM
Font: (Default) +Headings CS, 12 pt, No underline, Font color: Auto		
Page 11: [94] Formatted	Campus CRO PKLHBZ	9/21/2024 9:12:00 AM
Font: (Default) +Headings CS, 12 pt, French (France)		
Page 11: [95] Formatted	Campus CRO PKLHBZ	9/21/2024 9:12:00 AM
Font: (Default) +Headings CS, 12 pt, No underline, Font color: Auto		
Page 11: [96] Formatted	Campus CRO PKLHBZ	9/21/2024 9:12:00 AM
Font: (Default) +Headings CS, 12 pt, French (France)		
Page 11: [97] Formatted	Campus CRO PKLHBZ	9/21/2024 9:12:00 AM
Font: (Default) +Headings CS, 12 pt, No underline, Font color: Auto		
Page 11: [98] Formatted	Campus CRO PKLHBZ	9/21/2024 9:12:00 AM
Font: (Default) +Headings CS, 12 pt, French (France)		
Page 11: [99] Formatted	Campus CRO PKLHBZ	9/21/2024 9:12:00 AM
Font: (Default) +Headings CS, 12 pt, No underline, Font color: Auto		
Page 11: [100] Formatted	Campus CRO PKLHBZ	9/21/2024 9:12:00 AM
Font: (Default) +Headings CS, 12 pt, French (France)		
Page 11: [101] Formatted	Campus CRO PKLHBZ	9/21/2024 9:12:00 AM
Font: (Default) +Headings CS, 12 pt, No underline, Font color: Auto		
Page 11: [102] Formatted	Campus CRO PKLHBZ	9/21/2024 9:12:00 AM

Page 11: [103] Formatted	Campus CRO PKLHBZ	9/21/2024 9:12:00 AM
Font: (Default) +Headings CS, 12 pt, No underline, Font color: Auto		
Page 11: [104] Formatted	Campus CRO PKLHBZ	9/21/2024 9:12:00 AM
Font: (Default) +Headings CS, 12 pt, French (France)		
Page 11: [105] Formatted	Campus CRO PKLHBZ	9/21/2024 9:12:00 AM
Font: (Default) +Headings CS, 12 pt, No underline, Font color: Auto		
Page 11: [106] Formatted	Campus CRO PKLHBZ	9/21/2024 9:12:00 AM
Font: (Default) +Headings CS, 12 pt, French (France)		
Page 11: [107] Formatted	Campus CRO PKLHBZ	9/21/2024 9:12:00 AM
Font: (Default) +Headings CS, 12 pt, No underline, Font color: Auto		
Page 11: [108] Formatted	Campus CRO PKLHBZ	9/21/2024 9:12:00 AM
Font: (Default) +Headings CS, 12 pt, French (France)		
Page 11: [109] Formatted	Campus CRO PKLHBZ	9/21/2024 9:12:00 AM
Font: (Default) +Headings CS, 12 pt, No underline, Font color: Auto		
Page 11: [110] Formatted	Campus CRO PKLHBZ	9/21/2024 9:12:00 AM
Font: (Default) +Headings CS, 12 pt, French (France)		
Page 11: [111] Formatted	Campus CRO PKLHBZ	9/21/2024 9:12:00 AM
Font: (Default) +Headings CS, 12 pt, No underline, Font color: Auto		
Page 11: [112] Formatted	Campus CRO PKLHBZ	9/21/2024 9:12:00 AM
Font: (Default) +Headings CS, 12 pt, French (France)		
Page 11: [113] Formatted	Campus CRO PKLHBZ	9/21/2024 9:12:00 AM
Font: (Default) +Headings CS, 12 pt, No underline, Font color: Auto		
Page 11: [114] Formatted	Campus CRO PKLHBZ	9/21/2024 9:12:00 AM
Font: (Default) +Headings CS, 12 pt, French (France)		
Page 11: [115] Formatted	Campus CRO PKLHBZ	9/21/2024 9:12:00 AM
Font: (Default) +Headings CS, 12 pt, No underline		
Page 11: [116] Formatted	Campus CRO PKLHBZ	9/21/2024 9:12:00 AM
Font: (Default) +Headings CS, 12 pt, French (France)		
Page 11: [117] Formatted	Campus CRO PKLHBZ	9/21/2024 9:12:00 AM
Font: (Default) +Headings CS, 12 pt, No underline, Font color: Auto		
Page 11: [118] Formatted	Campus CRO PKLHBZ	9/21/2024 9:12:00 AM
Font: (Default) +Headings CS, 12 pt, French (France)		
Page 11: [119] Formatted	Campus CRO PKLHBZ	9/21/2024 9:12:00 AM
Font: (Default) +Headings CS, 12 pt, No underline, Font color: Auto		
Page 11: [120] Formatted	Campus CRO PKLHBZ	9/21/2024 9:12:00 AM
Font: (Default) +Headings CS, 12 pt, French (France)		
Page 11: [121] Formatted	Campus CRO PKLHBZ	9/21/2024 9:12:00 AM
Font: (Default) +Headings CS, 12 pt, No underline, Font color: Auto		
Page 11: [122] Formatted	Campus CRO PKLHBZ	9/21/2024 9:12:00 AM
Font: (Default) +Headings CS, 12 pt, French (France)		
Page 11: [123] Formatted	Campus CRO PKLHBZ	9/21/2024 9:12:00 AM

Page 11: [124] Formatted	Campus CRO PKLHBZ	9/21/2024 9:12:00 AM
Font: (Default) +Headings CS, 12 pt, No underline, Font color: Auto		
Page 11: [125] Formatted	Campus CRO PKLHBZ	9/21/2024 9:12:00 AM
Font: (Default) +Headings CS, 12 pt		
Page 11: [126] Formatted	Campus CRO PKLHBZ	9/21/2024 9:12:00 AM
Font: (Default) +Headings CS, 12 pt, No underline, Font color: Auto		
Page 13: [127] Formatted	Campus CRO PKLHBZ	9/21/2024 9:12:00 AM
Font: (Default) +Headings CS, 12 pt, No underline, Font color: Auto		
Page 13: [128] Formatted	Campus CRO PKLHBZ	9/21/2024 9:09:00 AM
Left		
Page 13: [129] Formatted	Campus CRO PKLHBZ	9/21/2024 9:12:00 AM
Font: (Default) +Headings CS, 12 pt		
Page 13: [130] Formatted	Campus CRO PKLHBZ	9/21/2024 9:12:00 AM
Font: (Default) +Headings CS, No underline, Font color: Auto		
Page 13: [130] Formatted	Campus CRO PKLHBZ	9/21/2024 9:12:00 AM
Font: (Default) +Headings CS, No underline, Font color: Auto		
Page 13: [131] Formatted	Campus CRO PKLHBZ	9/21/2024 9:12:00 AM
Font: (Default) +Headings CS		
Page 13: [132] Formatted	Campus CRO PKLHBZ	9/21/2024 9:12:00 AM
Font: (Default) +Headings CS, No underline, Font color: Auto		
Page 13: [132] Formatted	Campus CRO PKLHBZ	9/21/2024 9:12:00 AM
Font: (Default) +Headings CS, No underline, Font color: Auto		
Page 13: [132] Formatted	Campus CRO PKLHBZ	9/21/2024 9:12:00 AM
Font: (Default) +Headings CS, No underline, Font color: Auto		
Page 13: [133] Formatted	Campus CRO PKLHBZ	9/21/2024 9:12:00 AM
Font: (Default) +Headings CS		
Page 13: [134] Formatted	Campus CRO PKLHBZ	9/21/2024 9:12:00 AM
Font: (Default) +Headings CS, No underline, Font color: Auto		
Page 13: [134] Formatted	Campus CRO PKLHBZ	9/21/2024 9:12:00 AM
Font: (Default) +Headings CS, No underline, Font color: Auto		
Page 13: [135] Formatted	Campus CRO PKLHBZ	9/21/2024 9:12:00 AM
Font: (Default) +Headings CS		
Page 13: [136] Formatted	Campus CRO PKLHBZ	9/21/2024 9:12:00 AM
Font: (Default) +Headings CS, No underline, Font color: Auto		
Page 13: [136] Formatted	Campus CRO PKLHBZ	9/21/2024 9:12:00 AM
Font: (Default) +Headings CS, No underline, Font color: Auto		
Page 13: [137] Formatted	Campus CRO PKLHBZ	9/21/2024 9:12:00 AM
Font: (Default) +Headings CS		
Page 13: [138] Formatted	Campus CRO PKLHBZ	9/21/2024 9:12:00 AM
Font: (Default) +Headings CS, No underline, Font color: Auto		
Page 13: [138] Formatted	Campus CRO PKLHBZ	9/21/2024 9:12:00 AM

Page 13: [139] Formatted	Campus CRO PKLHBZ	9/21/2024 9:12:00 AM
Font: (Default) +Headings CS, No underline, Font color: Auto		
Page 13: [139] Formatted	Campus CRO PKLHBZ	9/21/2024 9:12:00 AM
Font: (Default) +Headings CS, No underline, Font color: Auto		
Page 13: [140] Formatted	Campus CRO PKLHBZ	9/21/2024 9:12:00 AM
Font: (Default) +Headings CS, No underline, Font color: Auto		
Page 13: [140] Formatted	Campus CRO PKLHBZ	9/21/2024 9:12:00 AM
Font: (Default) +Headings CS, No underline, Font color: Auto		
Page 13: [141] Formatted	Campus CRO PKLHBZ	9/21/2024 9:12:00 AM
Font: (Default) +Headings CS, Not Bold		
Page 13: [142] Formatted	Campus CRO PKLHBZ	9/21/2024 9:12:00 AM
Font: (Default) +Headings CS, No underline, Font color: Auto		
Page 13: [142] Formatted	Campus CRO PKLHBZ	9/21/2024 9:12:00 AM
Font: (Default) +Headings CS, No underline, Font color: Auto		
Page 13: [143] Formatted	Campus CRO PKLHBZ	9/21/2024 9:12:00 AM
Font: (Default) +Headings CS, Not Bold		
Page 13: [144] Formatted	Campus CRO PKLHBZ	9/21/2024 9:12:00 AM
Font: (Default) +Headings CS, No underline, Font color: Auto		
Page 13: [144] Formatted	Campus CRO PKLHBZ	9/21/2024 9:12:00 AM
Font: (Default) +Headings CS, No underline, Font color: Auto		
Page 13: [145] Formatted	Campus CRO PKLHBZ	9/21/2024 9:12:00 AM
Font: (Default) +Headings CS, Not Bold		
Page 13: [146] Formatted	Campus CRO PKLHBZ	9/21/2024 9:12:00 AM
Font: (Default) +Headings CS, No underline, Font color: Auto		
Page 13: [146] Formatted	Campus CRO PKLHBZ	9/21/2024 9:12:00 AM
Font: (Default) +Headings CS, No underline, Font color: Auto		
Page 13: [147] Formatted	Campus CRO PKLHBZ	9/21/2024 9:12:00 AM
Font: (Default) +Headings CS, Not Bold		
Page 13: [148] Formatted	Campus CRO PKLHBZ	9/21/2024 9:12:00 AM
Font: (Default) +Headings CS, No underline, Font color: Auto		
Page 13: [148] Formatted	Campus CRO PKLHBZ	9/21/2024 9:12:00 AM
Font: (Default) +Headings CS, No underline, Font color: Auto		
Page 13: [149] Formatted	Campus CRO PKLHBZ	9/21/2024 9:12:00 AM
Font: (Default) +Headings CS, No underline, Font color: Auto		
Page 13: [149] Formatted	Campus CRO PKLHBZ	9/21/2024 9:12:00 AM
Font: (Default) +Headings CS, No underline, Font color: Auto		
Page 13: [150] Formatted	Campus CRO PKLHBZ	9/21/2024 9:12:00 AM
Font: (Default) +Headings CS, Not Bold		
Page 13: [151] Formatted	Campus CRO PKLHBZ	9/21/2024 9:12:00 AM
Font: (Default) +Headings CS, No underline		
Page 13: [151] Formatted	Campus CRO PKLHBZ	9/21/2024 9:12:00 AM

Page 13: [151] Formatted	Campus CRO PKLHBZ	9/21/2024 9:12:00 AM
Font: (Default) +Headings CS, No underline		
Page 13: [151] Formatted	Campus CRO PKLHBZ	9/21/2024 9:12:00 AM
Font: (Default) +Headings CS, No underline		
Page 13: [152] Formatted	Campus CRO PKLHBZ	9/21/2024 9:12:00 AM
Font: (Default) +Headings CS, Not Bold		
Page 13: [153] Formatted	Campus CRO PKLHBZ	9/21/2024 9:12:00 AM
Font: (Default) +Headings CS, No underline, Font color: Auto		
Page 13: [153] Formatted	Campus CRO PKLHBZ	9/21/2024 9:12:00 AM
Font: (Default) +Headings CS, No underline, Font color: Auto		
Page 13: [154] Formatted	Campus CRO PKLHBZ	9/21/2024 9:12:00 AM
Font: (Default) +Headings CS, Not Bold		
Page 13: [155] Formatted	Campus CRO PKLHBZ	9/21/2024 9:12:00 AM
Font: (Default) +Headings CS, No underline, Font color: Auto		
Page 13: [155] Formatted	Campus CRO PKLHBZ	9/21/2024 9:12:00 AM
Font: (Default) +Headings CS, No underline, Font color: Auto		
Page 13: [156] Formatted	Campus CRO PKLHBZ	9/21/2024 9:12:00 AM
Font: (Default) +Headings CS, Not Bold		
Page 13: [157] Formatted	Campus CRO PKLHBZ	9/21/2024 9:12:00 AM
Font: (Default) +Headings CS, No underline, Font color: Auto		
Page 13: [157] Formatted	Campus CRO PKLHBZ	9/21/2024 9:12:00 AM
Font: (Default) +Headings CS, No underline, Font color: Auto		
Page 13: [158] Formatted	Campus CRO PKLHBZ	9/21/2024 9:12:00 AM
Font: (Default) +Headings CS, No underline, Font color: Auto		
Page 13: [158] Formatted	Campus CRO PKLHBZ	9/21/2024 9:12:00 AM
Font: (Default) +Headings CS, No underline, Font color: Auto		
Page 13: [159] Formatted	Campus CRO PKLHBZ	9/21/2024 9:12:00 AM
Font: (Default) +Headings CS, Not Bold		
Page 13: [160] Formatted	Campus CRO PKLHBZ	9/21/2024 9:12:00 AM
Font: (Default) +Headings CS, No underline		
Page 13: [160] Formatted	Campus CRO PKLHBZ	9/21/2024 9:12:00 AM
Font: (Default) +Headings CS, No underline		
Page 13: [160] Formatted	Campus CRO PKLHBZ	9/21/2024 9:12:00 AM
Font: (Default) +Headings CS, No underline		
Page 13: [160] Formatted	Campus CRO PKLHBZ	9/21/2024 9:12:00 AM
Font: (Default) +Headings CS, No underline		
Page 13: [161] Formatted	Campus CRO PKLHBZ	9/21/2024 9:12:00 AM
Font: (Default) +Headings CS, Not Bold		
Page 13: [162] Formatted	Campus CRO PKLHBZ	9/21/2024 9:12:00 AM
Font: (Default) +Headings CS, No underline, Font color: Auto		
Page 13: [162] Formatted	Campus CRO PKLHBZ	9/21/2024 9:12:00 AM

Page 13: [163] Formatted	Campus CRO PKLHBZ	9/21/2024 9:12:00 AM
Font: (Default) +Headings CS, Not Bold		
Page 13: [164] Formatted	Campus CRO PKLHBZ	9/21/2024 9:12:00 AM
Font: (Default) +Headings CS, No underline, Font color: Auto		
Page 13: [164] Formatted	Campus CRO PKLHBZ	9/21/2024 9:12:00 AM
Font: (Default) +Headings CS, No underline, Font color: Auto		
Page 13: [165] Formatted	Campus CRO PKLHBZ	9/21/2024 9:12:00 AM
Font: (Default) +Headings CS, Not Bold		
Page 13: [166] Formatted	Campus CRO PKLHBZ	9/21/2024 9:12:00 AM
Font: (Default) +Headings CS, No underline, Font color: Auto		
Page 13: [166] Formatted	Campus CRO PKLHBZ	9/21/2024 9:12:00 AM
Font: (Default) +Headings CS, No underline, Font color: Auto		
Page 13: [167] Formatted	Campus CRO PKLHBZ	9/21/2024 9:12:00 AM
Font: (Default) +Headings CS, No underline, Font color: Auto		
Page 13: [167] Formatted	Campus CRO PKLHBZ	9/21/2024 9:12:00 AM
Font: (Default) +Headings CS, No underline, Font color: Auto		
Page 13: [168] Formatted	Campus CRO PKLHBZ	9/21/2024 9:12:00 AM
Font: (Default) +Headings CS, Not Bold		
Page 13: [169] Formatted	Campus CRO PKLHBZ	9/21/2024 9:12:00 AM
Font: (Default) +Headings CS, No underline		
Page 13: [169] Formatted	Campus CRO PKLHBZ	9/21/2024 9:12:00 AM
Font: (Default) +Headings CS, No underline		
Page 13: [169] Formatted	Campus CRO PKLHBZ	9/21/2024 9:12:00 AM
Font: (Default) +Headings CS, No underline		
Page 13: [169] Formatted	Campus CRO PKLHBZ	9/21/2024 9:12:00 AM
Font: (Default) +Headings CS, No underline		
Page 13: [170] Formatted	Campus CRO PKLHBZ	9/21/2024 9:12:00 AM
Font: (Default) +Headings CS, Not Bold		
Page 13: [171] Formatted	Campus CRO PKLHBZ	9/21/2024 9:12:00 AM
Font: (Default) +Headings CS, No underline, Font color: Auto		
Page 13: [171] Formatted	Campus CRO PKLHBZ	9/21/2024 9:12:00 AM
Font: (Default) +Headings CS, No underline, Font color: Auto		
Page 13: [172] Formatted	Campus CRO PKLHBZ	9/21/2024 9:12:00 AM
Font: (Default) +Headings CS, Not Bold		
Page 13: [173] Formatted	Campus CRO PKLHBZ	9/21/2024 9:12:00 AM
Font: (Default) +Headings CS, No underline, Font color: Auto		
Page 13: [173] Formatted	Campus CRO PKLHBZ	9/21/2024 9:12:00 AM
Font: (Default) +Headings CS, No underline, Font color: Auto		
Page 13: [174] Formatted	Campus CRO PKLHBZ	9/21/2024 9:12:00 AM
Font: (Default) +Headings CS, Not Bold		
Page 13: [175] Formatted	Campus CRO PKLHBZ	9/21/2024 9:12:00 AM

Page 13: [175] Formatted	Campus CRO PKLHBZ	9/21/2024 9:12:00 AM
Font: (Default) +Headings CS, No underline, Font color: Auto		
Page 13: [176] Formatted	Campus CRO PKLHBZ	9/21/2024 9:12:00 AM
Font: (Default) +Headings CS, No underline, Font color: Auto		
Page 13: [176] Formatted	Campus CRO PKLHBZ	9/21/2024 9:12:00 AM
Font: (Default) +Headings CS, No underline, Font color: Auto		
Page 13: [177] Formatted	Campus CRO PKLHBZ	9/21/2024 9:12:00 AM
Font: (Default) +Headings CS, Not Bold		
Page 13: [178] Formatted	Campus CRO PKLHBZ	9/21/2024 9:12:00 AM
Font: (Default) +Headings CS, No underline		
Page 13: [178] Formatted	Campus CRO PKLHBZ	9/21/2024 9:12:00 AM
Font: (Default) +Headings CS, No underline		
Page 13: [178] Formatted	Campus CRO PKLHBZ	9/21/2024 9:12:00 AM
Font: (Default) +Headings CS, No underline		
Page 13: [179] Formatted	Campus CRO PKLHBZ	9/21/2024 9:12:00 AM
Font: (Default) +Headings CS, Not Bold		
Page 13: [180] Formatted	Campus CRO PKLHBZ	9/21/2024 9:12:00 AM
Font: (Default) +Headings CS, No underline		
Page 13: [180] Formatted	Campus CRO PKLHBZ	9/21/2024 9:12:00 AM
Font: (Default) +Headings CS, No underline		
Page 13: [180] Formatted	Campus CRO PKLHBZ	9/21/2024 9:12:00 AM
Font: (Default) +Headings CS, No underline		
Page 13: [181] Formatted	Campus CRO PKLHBZ	9/21/2024 9:12:00 AM
Font: (Default) +Headings CS, Not Bold		
Page 13: [182] Formatted	Campus CRO PKLHBZ	9/21/2024 9:12:00 AM
Font: (Default) +Headings CS, No underline, Font color: Auto		
Page 13: [182] Formatted	Campus CRO PKLHBZ	9/21/2024 9:12:00 AM
Font: (Default) +Headings CS, No underline, Font color: Auto		
Page 13: [183] Formatted	Campus CRO PKLHBZ	9/21/2024 9:12:00 AM
Font: (Default) +Headings CS, Not Bold		
Page 13: [184] Formatted	Campus CRO PKLHBZ	9/21/2024 9:12:00 AM
Font: (Default) +Headings CS, No underline, Font color: Auto		
Page 13: [184] Formatted	Campus CRO PKLHBZ	9/21/2024 9:12:00 AM
Font: (Default) +Headings CS, No underline, Font color: Auto		
Page 13: [185] Formatted	Campus CRO PKLHBZ	9/21/2024 9:12:00 AM
Font: (Default) +Headings CS, No underline, Font color: Auto		
Page 13: [185] Formatted	Campus CRO PKLHBZ	9/21/2024 9:12:00 AM
Font: (Default) +Headings CS, No underline, Font color: Auto		
Page 13: [186] Formatted	Campus CRO PKLHBZ	9/21/2024 9:12:00 AM
Font: (Default) +Headings CS, Not Bold		
Page 13: [187] Formatted	Campus CRO PKLHBZ	9/21/2024 9:12:00 AM

Page 13: [187] Formatted	Campus CRO PKLHBZ	9/21/2024 9:12:00 AM
Font: (Default) +Headings CS, No underline		
Page 13: [187] Formatted	Campus CRO PKLHBZ	9/21/2024 9:12:00 AM
Font: (Default) +Headings CS, No underline		
Page 13: [188] Formatted	Campus CRO PKLHBZ	9/21/2024 9:12:00 AM
Font: (Default) +Headings CS, Not Bold		
Page 13: [189] Formatted	Campus CRO PKLHBZ	9/21/2024 9:12:00 AM
Font: (Default) +Headings CS, No underline, Font color: Auto		
Page 13: [189] Formatted	Campus CRO PKLHBZ	9/21/2024 9:12:00 AM
Font: (Default) +Headings CS, No underline, Font color: Auto		
Page 13: [190] Formatted	Campus CRO PKLHBZ	9/21/2024 9:12:00 AM
Font: (Default) +Headings CS, Not Bold		
Page 13: [191] Formatted	Campus CRO PKLHBZ	9/21/2024 9:12:00 AM
Font: (Default) +Headings CS, No underline, Font color: Auto		
Page 13: [191] Formatted	Campus CRO PKLHBZ	9/21/2024 9:12:00 AM
Font: (Default) +Headings CS, No underline, Font color: Auto		
Page 13: [192] Formatted	Campus CRO PKLHBZ	9/21/2024 9:12:00 AM
Font: (Default) +Headings CS, Not Bold		
Page 13: [193] Formatted	Campus CRO PKLHBZ	9/21/2024 9:12:00 AM
Font: (Default) +Headings CS, No underline, Font color: Auto		
Page 13: [193] Formatted	Campus CRO PKLHBZ	9/21/2024 9:12:00 AM
Font: (Default) +Headings CS, No underline, Font color: Auto		
Page 13: [194] Formatted	Campus CRO PKLHBZ	9/21/2024 9:12:00 AM
Font: (Default) +Headings CS, 12 pt		
Page 13: [195] Formatted	Campus CRO PKLHBZ	9/21/2024 9:12:00 AM
Font: (Default) +Headings CS, No underline, Font color: Auto		
Page 13: [195] Formatted	Campus CRO PKLHBZ	9/21/2024 9:12:00 AM
Font: (Default) +Headings CS, No underline, Font color: Auto		
Page 13: [196] Formatted	Campus CRO PKLHBZ	9/21/2024 9:12:00 AM
Font: (Default) +Headings CS, No underline, Font color: Auto		
Page 13: [196] Formatted	Campus CRO PKLHBZ	9/21/2024 9:12:00 AM
Font: (Default) +Headings CS, No underline, Font color: Auto		
Page 13: [197] Formatted	Campus CRO PKLHBZ	9/21/2024 9:12:00 AM
Font: (Default) +Headings CS, Not Bold		
Page 13: [198] Formatted	Campus CRO PKLHBZ	9/21/2024 9:12:00 AM
Font: (Default) +Headings CS, No underline, Font color: Auto		
Page 13: [198] Formatted	Campus CRO PKLHBZ	9/21/2024 9:12:00 AM
Font: (Default) +Headings CS, No underline, Font color: Auto		
Page 13: [199] Formatted	Campus CRO PKLHBZ	9/21/2024 9:12:00 AM
Font: (Default) +Headings CS, Not Bold		
Page 13: [200] Formatted	Campus CRO PKLHBZ	9/21/2024 9:12:00 AM

Page 13: [200] Formatted	Campus CRO PKLHBZ	9/21/2024 9:12:00 AM
Font: (Default) +Headings CS, No underline		
Page 13: [201] Formatted	Campus CRO PKLHBZ	9/21/2024 9:12:00 AM
Font: (Default) +Headings CS, Not Bold		
Page 13: [202] Formatted	Campus CRO PKLHBZ	9/21/2024 9:12:00 AM
Font: (Default) +Headings CS, No underline, Font color: Auto		
Page 13: [202] Formatted	Campus CRO PKLHBZ	9/21/2024 9:12:00 AM
Font: (Default) +Headings CS, No underline, Font color: Auto		
Page 13: [203] Formatted	Campus CRO PKLHBZ	9/21/2024 9:12:00 AM
Font: (Default) +Headings CS, Not Bold		
Page 13: [204] Formatted	Campus CRO PKLHBZ	9/21/2024 9:12:00 AM
Font: (Default) +Headings CS, No underline, Font color: Auto		
Page 13: [204] Formatted	Campus CRO PKLHBZ	9/21/2024 9:12:00 AM
Font: (Default) +Headings CS, No underline, Font color: Auto		
Page 13: [205] Formatted	Campus CRO PKLHBZ	9/21/2024 9:12:00 AM
Font: (Default) +Headings CS, No underline, Font color: Auto		
Page 13: [205] Formatted	Campus CRO PKLHBZ	9/21/2024 9:12:00 AM
Font: (Default) +Headings CS, No underline, Font color: Auto		
Page 13: [206] Formatted	Campus CRO PKLHBZ	9/21/2024 9:12:00 AM
Font: (Default) +Headings CS, Not Bold		
Page 13: [207] Formatted	Campus CRO PKLHBZ	9/21/2024 9:12:00 AM
Font: (Default) +Headings CS, No underline, Font color: Auto		
Page 13: [207] Formatted	Campus CRO PKLHBZ	9/21/2024 9:12:00 AM
Font: (Default) +Headings CS, No underline, Font color: Auto		
Page 13: [208] Formatted	Campus CRO PKLHBZ	9/21/2024 9:12:00 AM
Font: (Default) +Headings CS, Not Bold		
Page 13: [209] Formatted	Campus CRO PKLHBZ	9/21/2024 9:12:00 AM
Font: (Default) +Headings CS, No underline, Font color: Auto		
Page 13: [209] Formatted	Campus CRO PKLHBZ	9/21/2024 9:12:00 AM
Font: (Default) +Headings CS, No underline, Font color: Auto		
Page 13: [210] Formatted	Campus CRO PKLHBZ	9/21/2024 9:12:00 AM
Font: (Default) +Headings CS, Not Bold		
Page 13: [211] Formatted	Campus CRO PKLHBZ	9/21/2024 9:12:00 AM
Font: (Default) +Headings CS, No underline, Font color: Auto		
Page 13: [211] Formatted	Campus CRO PKLHBZ	9/21/2024 9:12:00 AM
Font: (Default) +Headings CS, No underline, Font color: Auto		
Page 13: [212] Formatted	Campus CRO PKLHBZ	9/21/2024 9:12:00 AM
Font: (Default) +Headings CS, Not Bold		
Page 13: [213] Formatted	Campus CRO PKLHBZ	9/21/2024 9:12:00 AM
Font: (Default) +Headings CS, No underline, Font color: Auto		
Page 13: [213] Formatted	Campus CRO PKLHBZ	9/21/2024 9:12:00 AM

Page 13: [214] Formatted	Campus CRO PKLHBZ	9/21/2024 9:12:00 AM
Font: (Default) +Headings CS, No underline, Font color: Auto		
Page 13: [214] Formatted	Campus CRO PKLHBZ	9/21/2024 9:12:00 AM
Font: (Default) +Headings CS, No underline, Font color: Auto		
Page 13: [215] Formatted	Campus CRO PKLHBZ	9/21/2024 9:12:00 AM
Font: (Default) +Headings CS, Not Bold		
Page 13: [216] Formatted	Campus CRO PKLHBZ	9/21/2024 9:12:00 AM
Font: (Default) +Headings CS, No underline, Font color: Auto		
Page 13: [216] Formatted	Campus CRO PKLHBZ	9/21/2024 9:12:00 AM
Font: (Default) +Headings CS, No underline, Font color: Auto		
Page 13: [217] Formatted	Campus CRO PKLHBZ	9/21/2024 9:12:00 AM
Font: (Default) +Headings CS, Not Bold		
Page 13: [218] Formatted	Campus CRO PKLHBZ	9/21/2024 9:12:00 AM
Font: (Default) +Headings CS, No underline, Font color: Auto		
Page 13: [218] Formatted	Campus CRO PKLHBZ	9/21/2024 9:12:00 AM
Font: (Default) +Headings CS, No underline, Font color: Auto		
Page 13: [219] Formatted	Campus CRO PKLHBZ	9/21/2024 9:12:00 AM
Font: (Default) +Headings CS, Not Bold		
Page 13: [220] Formatted	Campus CRO PKLHBZ	9/21/2024 9:12:00 AM
Font: (Default) +Headings CS, No underline, Font color: Auto		
Page 13: [220] Formatted	Campus CRO PKLHBZ	9/21/2024 9:12:00 AM
Font: (Default) +Headings CS, No underline, Font color: Auto		
Page 13: [221] Formatted	Campus CRO PKLHBZ	9/21/2024 9:12:00 AM
Font: (Default) +Headings CS, Not Bold		
Page 13: [222] Formatted	Campus CRO PKLHBZ	9/21/2024 9:12:00 AM
Font: (Default) +Headings CS, No underline, Font color: Auto		
Page 13: [222] Formatted	Campus CRO PKLHBZ	9/21/2024 9:12:00 AM
Font: (Default) +Headings CS, No underline, Font color: Auto		
Page 13: [223] Formatted	Campus CRO PKLHBZ	9/21/2024 9:12:00 AM
Font: (Default) +Headings CS, No underline, Font color: Auto		
Page 13: [223] Formatted	Campus CRO PKLHBZ	9/21/2024 9:12:00 AM
Font: (Default) +Headings CS, No underline, Font color: Auto		
Page 13: [224] Formatted	Campus CRO PKLHBZ	9/21/2024 9:12:00 AM
Font: (Default) +Headings CS, Not Bold		
Page 13: [225] Formatted	Campus CRO PKLHBZ	9/21/2024 9:12:00 AM
Font: (Default) +Headings CS, No underline, Font color: Auto		
Page 13: [225] Formatted	Campus CRO PKLHBZ	9/21/2024 9:12:00 AM
Font: (Default) +Headings CS, No underline, Font color: Auto		
Page 13: [226] Formatted	Campus CRO PKLHBZ	9/21/2024 9:12:00 AM
Font: (Default) +Headings CS, Not Bold		
Page 13: [227] Formatted	Campus CRO PKLHBZ	9/21/2024 9:12:00 AM

Page 13: [227] Formatted	Campus CRO PKLHBZ	9/21/2024 9:12:00 AM
Font: (Default) +Headings CS, No underline, Font color: Auto		
Page 13: [228] Formatted	Campus CRO PKLHBZ	9/21/2024 9:12:00 AM
Font: (Default) +Headings CS, Not Bold		
Page 13: [229] Formatted	Campus CRO PKLHBZ	9/21/2024 9:12:00 AM
Font: (Default) +Headings CS, No underline, Font color: Auto		
Page 13: [229] Formatted	Campus CRO PKLHBZ	9/21/2024 9:12:00 AM
Font: (Default) +Headings CS, No underline, Font color: Auto		
Page 13: [230] Formatted	Campus CRO PKLHBZ	9/21/2024 9:12:00 AM
Font: (Default) +Headings CS, Not Bold		
Page 13: [231] Formatted	Campus CRO PKLHBZ	9/21/2024 9:12:00 AM
Font: (Default) +Headings CS, No underline, Font color: Auto		
Page 13: [231] Formatted	Campus CRO PKLHBZ	9/21/2024 9:12:00 AM
Font: (Default) +Headings CS, No underline, Font color: Auto		
Page 13: [232] Formatted	Campus CRO PKLHBZ	9/21/2024 9:12:00 AM
Font: (Default) +Headings CS, No underline, Font color: Auto		
Page 13: [232] Formatted	Campus CRO PKLHBZ	9/21/2024 9:12:00 AM
Font: (Default) +Headings CS, No underline, Font color: Auto		
Page 13: [233] Formatted	Campus CRO PKLHBZ	9/21/2024 9:12:00 AM
Font: (Default) +Headings CS, Not Bold		
Page 13: [234] Formatted	Campus CRO PKLHBZ	9/21/2024 9:12:00 AM
Font: (Default) +Headings CS, No underline, Font color: Auto		
Page 13: [234] Formatted	Campus CRO PKLHBZ	9/21/2024 9:12:00 AM
Font: (Default) +Headings CS, No underline, Font color: Auto		
Page 13: [235] Formatted	Campus CRO PKLHBZ	9/21/2024 9:12:00 AM
Font: (Default) +Headings CS, Not Bold		
Page 13: [236] Formatted	Campus CRO PKLHBZ	9/21/2024 9:12:00 AM
Font: (Default) +Headings CS, No underline, Font color: Auto		
Page 13: [236] Formatted	Campus CRO PKLHBZ	9/21/2024 9:12:00 AM
Font: (Default) +Headings CS, No underline, Font color: Auto		
Page 13: [237] Formatted	Campus CRO PKLHBZ	9/21/2024 9:12:00 AM
Font: (Default) +Headings CS, Not Bold		
Page 13: [238] Formatted	Campus CRO PKLHBZ	9/21/2024 9:12:00 AM
Font: (Default) +Headings CS, No underline, Font color: Auto		
Page 13: [238] Formatted	Campus CRO PKLHBZ	9/21/2024 9:12:00 AM
Font: (Default) +Headings CS, No underline, Font color: Auto		
Page 13: [239] Formatted	Campus CRO PKLHBZ	9/21/2024 9:12:00 AM
Font: (Default) +Headings CS, Not Bold		
Page 13: [240] Formatted	Campus CRO PKLHBZ	9/21/2024 9:12:00 AM
Font: (Default) +Headings CS, No underline, Font color: Auto		
Page 13: [240] Formatted	Campus CRO PKLHBZ	9/21/2024 9:12:00 AM

Page 13: [241] Formatted	Campus CRO PKLHBZ	9/21/2024 9:12:00 AM
Font: (Default) +Headings CS, No underline, Font color: Auto		
Page 13: [241] Formatted	Campus CRO PKLHBZ	9/21/2024 9:12:00 AM
Font: (Default) +Headings CS, No underline, Font color: Auto		
Page 13: [242] Formatted	Campus CRO PKLHBZ	9/21/2024 9:12:00 AM
Font: (Default) +Headings CS, Not Bold		
Page 13: [243] Formatted	Campus CRO PKLHBZ	9/21/2024 9:12:00 AM
Font: (Default) +Headings CS, No underline, Font color: Auto		
Page 13: [243] Formatted	Campus CRO PKLHBZ	9/21/2024 9:12:00 AM
Font: (Default) +Headings CS, No underline, Font color: Auto		
Page 13: [244] Formatted	Campus CRO PKLHBZ	9/21/2024 9:12:00 AM
Font: (Default) +Headings CS, Not Bold		
Page 13: [245] Formatted	Campus CRO PKLHBZ	9/21/2024 9:12:00 AM
Font: (Default) +Headings CS, No underline, Font color: Auto		
Page 13: [245] Formatted	Campus CRO PKLHBZ	9/21/2024 9:12:00 AM
Font: (Default) +Headings CS, No underline, Font color: Auto		
Page 13: [246] Formatted	Campus CRO PKLHBZ	9/21/2024 9:12:00 AM
Font: (Default) +Headings CS, Not Bold		
Page 13: [247] Formatted	Campus CRO PKLHBZ	9/21/2024 9:12:00 AM
Font: (Default) +Headings CS, No underline, Font color: Auto		
Page 13: [247] Formatted	Campus CRO PKLHBZ	9/21/2024 9:12:00 AM
Font: (Default) +Headings CS, No underline, Font color: Auto		
Page 13: [248] Formatted	Campus CRO PKLHBZ	9/21/2024 9:12:00 AM
Font: (Default) +Headings CS, Not Bold		
Page 13: [249] Formatted	Campus CRO PKLHBZ	9/21/2024 9:12:00 AM
Font: (Default) +Headings CS, No underline, Font color: Auto		
Page 13: [249] Formatted	Campus CRO PKLHBZ	9/21/2024 9:12:00 AM
Font: (Default) +Headings CS, No underline, Font color: Auto		
Page 13: [250] Formatted	Campus CRO PKLHBZ	9/21/2024 9:12:00 AM
Font: (Default) +Headings CS, 12 pt, French (France)		
Page 13: [251] Formatted	Campus CRO PKLHBZ	9/21/2024 9:12:00 AM
Font: (Default) +Headings CS, No underline, Font color: Auto		
Page 13: [251] Formatted	Campus CRO PKLHBZ	9/21/2024 9:12:00 AM
Font: (Default) +Headings CS, No underline, Font color: Auto		
Page 13: [252] Formatted	Campus CRO PKLHBZ	9/21/2024 9:12:00 AM
Font: (Default) +Headings CS		
Page 13: [253] Formatted	Campus CRO PKLHBZ	9/21/2024 9:12:00 AM
Font: (Default) +Headings CS, No underline, Font color: Auto		
Page 13: [253] Formatted	Campus CRO PKLHBZ	9/21/2024 9:12:00 AM
Font: (Default) +Headings CS, No underline, Font color: Auto		
Page 13: [254] Formatted	Campus CRO PKLHBZ	9/21/2024 9:12:00 AM

Page 13: [255] Formatted	Campus CRO PKLHBZ	9/21/2024 9:12:00 AM
Font: (Default) +Headings CS, No underline, Font color: Auto		
Page 13: [255] Formatted	Campus CRO PKLHBZ	9/21/2024 9:12:00 AM
Font: (Default) +Headings CS, No underline, Font color: Auto		
Page 13: [256] Formatted	Campus CRO PKLHBZ	9/21/2024 9:12:00 AM
Font: (Default) +Headings CS, Not Bold		
Page 13: [257] Formatted	Campus CRO PKLHBZ	9/21/2024 9:12:00 AM
Font: (Default) +Headings CS, No underline, Font color: Auto		
Page 13: [257] Formatted	Campus CRO PKLHBZ	9/21/2024 9:12:00 AM
Font: (Default) +Headings CS, No underline, Font color: Auto		
Page 13: [258] Formatted	Campus CRO PKLHBZ	9/21/2024 9:12:00 AM
Font: (Default) +Headings CS, Not Bold		
Page 13: [259] Formatted	Campus CRO PKLHBZ	9/21/2024 9:12:00 AM
Font: (Default) +Headings CS, No underline, Font color: Auto		
Page 13: [259] Formatted	Campus CRO PKLHBZ	9/21/2024 9:12:00 AM
Font: (Default) +Headings CS, No underline, Font color: Auto		
Page 13: [260] Formatted	Campus CRO PKLHBZ	9/21/2024 9:12:00 AM
Font: (Default) +Headings CS, No underline, Font color: Auto		
Page 13: [260] Formatted	Campus CRO PKLHBZ	9/21/2024 9:12:00 AM
Font: (Default) +Headings CS, No underline, Font color: Auto		
Page 13: [261] Formatted	Campus CRO PKLHBZ	9/21/2024 9:12:00 AM
Font: (Default) +Headings CS		
Page 13: [262] Formatted	Campus CRO PKLHBZ	9/21/2024 9:12:00 AM
Font: (Default) +Headings CS, No underline, Font color: Auto		
Page 13: [262] Formatted	Campus CRO PKLHBZ	9/21/2024 9:12:00 AM
Font: (Default) +Headings CS, No underline, Font color: Auto		
Page 13: [263] Formatted	Campus CRO PKLHBZ	9/21/2024 9:12:00 AM
Font: (Default) +Headings CS, Not Bold		
Page 13: [264] Formatted	Campus CRO PKLHBZ	9/21/2024 9:12:00 AM
Font: (Default) +Headings CS, No underline, Font color: Auto		
Page 13: [264] Formatted	Campus CRO PKLHBZ	9/21/2024 9:12:00 AM
Font: (Default) +Headings CS, No underline, Font color: Auto		
Page 13: [265] Formatted	Campus CRO PKLHBZ	9/21/2024 9:12:00 AM
Font: (Default) +Headings CS, Not Bold		
Page 13: [266] Formatted	Campus CRO PKLHBZ	9/21/2024 9:12:00 AM
Font: (Default) +Headings CS, No underline, Font color: Auto		
Page 13: [266] Formatted	Campus CRO PKLHBZ	9/21/2024 9:12:00 AM
Font: (Default) +Headings CS, No underline, Font color: Auto		
Page 13: [267] Formatted	Campus CRO PKLHBZ	9/21/2024 9:12:00 AM
Font: (Default) +Headings CS, Not Bold		
Page 13: [268] Formatted	Campus CRO PKLHBZ	9/21/2024 9:12:00 AM

Page 13: [268] Formatted	Campus CRO PKLHBZ	9/21/2024 9:12:00 AM
Font: (Default) +Headings CS, No underline, Font color: Auto		
Page 13: [269] Formatted	Campus CRO PKLHBZ	9/21/2024 9:12:00 AM
Font: (Default) +Headings CS, No underline, Font color: Auto		
Page 13: [269] Formatted	Campus CRO PKLHBZ	9/21/2024 9:12:00 AM
Font: (Default) +Headings CS, No underline, Font color: Auto		
Page 13: [270] Formatted	Campus CRO PKLHBZ	9/21/2024 9:12:00 AM
Font: (Default) +Headings CS, Not Bold		
Page 13: [271] Formatted	Campus CRO PKLHBZ	9/21/2024 9:12:00 AM
Font: (Default) +Headings CS, No underline, Font color: Auto		
Page 13: [271] Formatted	Campus CRO PKLHBZ	9/21/2024 9:12:00 AM
Font: (Default) +Headings CS, No underline, Font color: Auto		
Page 13: [272] Formatted	Campus CRO PKLHBZ	9/21/2024 9:12:00 AM
Font: (Default) +Headings CS, Not Bold		
Page 13: [273] Formatted	Campus CRO PKLHBZ	9/21/2024 9:12:00 AM
Font: (Default) +Headings CS, No underline, Font color: Auto		
Page 13: [273] Formatted	Campus CRO PKLHBZ	9/21/2024 9:12:00 AM
Font: (Default) +Headings CS, No underline, Font color: Auto		
Page 13: [274] Formatted	Campus CRO PKLHBZ	9/21/2024 9:12:00 AM
Font: (Default) +Headings CS, Not Bold		
Page 13: [275] Formatted	Campus CRO PKLHBZ	9/21/2024 9:12:00 AM
Font: (Default) +Headings CS, No underline, Font color: Auto		
Page 13: [275] Formatted	Campus CRO PKLHBZ	9/21/2024 9:12:00 AM
Font: (Default) +Headings CS, No underline, Font color: Auto		
Page 13: [276] Formatted	Campus CRO PKLHBZ	9/21/2024 9:12:00 AM
Font: (Default) +Headings CS, Not Bold		
Page 13: [277] Formatted	Campus CRO PKLHBZ	9/21/2024 9:12:00 AM
Font: (Default) +Headings CS, No underline, Font color: Auto		
Page 13: [277] Formatted	Campus CRO PKLHBZ	9/21/2024 9:12:00 AM
Font: (Default) +Headings CS, No underline, Font color: Auto		
Page 13: [278] Formatted	Campus CRO PKLHBZ	9/21/2024 9:12:00 AM
Font: (Default) +Headings CS, 12 pt, No underline, Font color: Auto		
Page 13: [278] Formatted	Campus CRO PKLHBZ	9/21/2024 9:12:00 AM
Font: (Default) +Headings CS, 12 pt, No underline, Font color: Auto		
Page 22: [279] Formatted	Campus CRO PKLHBZ	9/21/2024 9:12:00 AM
Font: (Default) +Headings CS, 12 pt, No underline, Font color: Auto, French (France)		
Page 22: [280] Formatted	Campus CRO PKLHBZ	9/21/2024 9:12:00 AM
Font: (Default) +Headings CS, 12 pt, French (France)		
Page 22: [281] Formatted	Campus CRO PKLHBZ	9/21/2024 9:12:00 AM
Font: (Default) +Headings CS, 12 pt		
Page 22: [282] Formatted	Campus CRO PKLHBZ	9/21/2024 9:12:00 AM

Page 22: [283] Formatted	Campus CRO PKLHBZ	9/21/2024 9:12:00 AM
Font: (Default) +Headings CS, 12 pt, French (France)		
Page 22: [284] Formatted	Campus CRO PKLHBZ	9/21/2024 9:12:00 AM
Font: (Default) +Headings CS, 12 pt		
Page 22: [285] Formatted	Campus CRO PKLHBZ	9/21/2024 9:12:00 AM
Font: (Default) +Headings CS, 12 pt, No underline, Font color: Auto, French (France)		
Page 22: [286] Formatted	Campus CRO PKLHBZ	9/21/2024 9:12:00 AM
Font: (Default) +Headings CS, 12 pt, French (France)		
Page 22: [287] Formatted	Campus CRO PKLHBZ	9/21/2024 9:12:00 AM
Font: (Default) +Headings CS, 12 pt, Not Italic, French (France)		
Page 22: [288] Formatted	Campus CRO PKLHBZ	9/21/2024 9:12:00 AM
Font: (Default) +Headings CS, 12 pt, French (France)		
Page 22: [289] Formatted	Campus CRO PKLHBZ	9/21/2024 9:12:00 AM
Font: (Default) +Headings CS, 12 pt		
Page 22: [290] Formatted	Campus CRO PKLHBZ	9/21/2024 9:12:00 AM
Font: (Default) +Headings CS, 12 pt, No underline, Font color: Auto, French (France)		
Page 22: [291] Formatted	Campus CRO PKLHBZ	9/21/2024 9:12:00 AM
Font: (Default) +Headings CS, 12 pt, French (France)		
Page 22: [292] Formatted	Campus CRO PKLHBZ	9/21/2024 9:12:00 AM
Font: (Default) +Headings CS, 12 pt		
Page 22: [293] Formatted	Campus CRO PKLHBZ	9/21/2024 9:12:00 AM
Font: (Default) +Headings CS, 12 pt, No underline, Font color: Auto, French (France)		
Page 22: [294] Formatted	Campus CRO PKLHBZ	9/21/2024 9:12:00 AM
Font: (Default) +Headings CS, 12 pt		
Page 22: [295] Formatted	Campus CRO PKLHBZ	9/21/2024 9:12:00 AM
Font: (Default) +Headings CS, 12 pt, No underline, Font color: Auto, French (France)		
Page 22: [296] Formatted	Campus CRO PKLHBZ	9/21/2024 9:12:00 AM
Font: (Default) +Headings CS, 12 pt		
Page 22: [297] Formatted	Campus CRO PKLHBZ	9/21/2024 9:12:00 AM
Font: (Default) +Headings CS, 12 pt, No underline, Font color: Auto, French (France)		
Page 22: [298] Formatted	Campus CRO PKLHBZ	9/21/2024 9:12:00 AM
Font: (Default) +Headings CS, 12 pt, French (France)		
Page 22: [299] Formatted	Campus CRO PKLHBZ	9/21/2024 9:12:00 AM
Font: (Default) +Headings CS, 12 pt		
Page 23: [300] Formatted	Campus CRO PKLHBZ	9/21/2024 9:12:00 AM
Font: (Default) +Headings CS, 12 pt, No underline, Font color: Auto, French (France)		
Page 23: [301] Formatted	Campus CRO PKLHBZ	9/21/2024 9:12:00 AM
Font: (Default) +Headings CS, 12 pt, French (France)		
Page 23: [302] Formatted	Campus CRO PKLHBZ	9/21/2024 9:12:00 AM
Font: (Default) +Headings CS, 12 pt		
Page 23: [303] Formatted	Campus CRO PKLHBZ	9/21/2024 9:12:00 AM

Page 23: [304] Formatted	Campus CRO PKLHBZ	9/21/2024 9:12:00 AM
Font: (Default) +Headings CS, 12 pt, French (France)		
Page 23: [305] Formatted	Campus CRO PKLHBZ	9/21/2024 9:12:00 AM
Font: (Default) +Headings CS, 12 pt		
Page 23: [306] Formatted	Campus CRO PKLHBZ	9/21/2024 9:12:00 AM
Font: (Default) +Headings CS, 12 pt, No underline, Font color: Auto, French (France)		
Page 23: [307] Formatted	Campus CRO PKLHBZ	9/21/2024 9:12:00 AM
Font: (Default) +Headings CS, 12 pt, French (France)		
Page 23: [308] Formatted	Campus CRO PKLHBZ	9/21/2024 9:12:00 AM
Font: (Default) +Headings CS, 12 pt		
Page 23: [309] Formatted	Campus CRO PKLHBZ	9/21/2024 9:12:00 AM
Font: (Default) +Headings CS, 12 pt, No underline, Font color: Auto, French (France)		
Page 23: [310] Formatted	Campus CRO PKLHBZ	9/21/2024 9:12:00 AM
Font: (Default) +Headings CS, 12 pt, French (France)		
Page 23: [311] Formatted	Campus CRO PKLHBZ	9/21/2024 9:12:00 AM
Font: (Default) +Headings CS, 12 pt		
Page 24: [312] Formatted	Campus CRO PKLHBZ	9/21/2024 9:12:00 AM
Font: (Default) +Headings CS, 12 pt		
Page 24: [313] Formatted	Campus CRO PKLHBZ	9/21/2024 9:12:00 AM
Font: (Default) +Headings CS, 12 pt, No underline, Font color: Auto, French (France)		
Page 24: [314] Formatted	Campus CRO PKLHBZ	9/21/2024 9:12:00 AM
Font: (Default) +Headings CS, 12 pt, French (France)		
Page 24: [315] Formatted	Campus CRO PKLHBZ	9/21/2024 9:12:00 AM
Font: (Default) +Headings CS, 12 pt		
Page 24: [316] Formatted	Campus CRO PKLHBZ	9/21/2024 9:12:00 AM
Font: (Default) +Headings CS, 12 pt, No underline, Font color: Auto, French (France)		
Page 24: [317] Formatted	Campus CRO PKLHBZ	9/21/2024 9:12:00 AM
Font: (Default) +Headings CS, 12 pt		
Page 24: [318] Formatted	Campus CRO PKLHBZ	9/21/2024 9:12:00 AM
Font: (Default) +Headings CS, 12 pt, No underline, Font color: Auto, French (France)		
Page 24: [319] Formatted	Campus CRO PKLHBZ	9/21/2024 9:12:00 AM
Font: (Default) +Headings CS, 12 pt, French (France)		
Page 24: [320] Formatted	Campus CRO PKLHBZ	9/21/2024 9:12:00 AM
Font: (Default) +Headings CS, 12 pt		
Page 24: [321] Formatted	Campus CRO PKLHBZ	9/21/2024 9:12:00 AM
Font: (Default) +Headings CS, 12 pt, No underline, Font color: Auto, French (France)		
Page 24: [322] Formatted	Campus CRO PKLHBZ	9/21/2024 9:12:00 AM
Font: (Default) +Headings CS, 12 pt, French (France)		
Page 24: [323] Formatted	Campus CRO PKLHBZ	9/21/2024 9:12:00 AM
Font: (Default) +Headings CS, 12 pt		