

Original Research Article

Status of the grain discoloration disease in paddy growing ecosystems of Karnataka, India

ABSTRACT

Among different diseases that affect rice crops, grain discoloration disease (GD) is one of the emerging diseases in all rice cultivating areas around the world. Though the disease has recently emerged, it is catching the attention of the scientific and farming community due to its qualitative and quantitative loss. Since the disease is a highly complex disease caused by multiple pathogens, thus its management is challenging. As the disease is still in the emerging stage, its incidence and severity in different rice ecosystems are still not available. Assessment of disease incidence, severity, and yield loss is very crucial for disease management. We carried out an intensive roving survey to assess the incidence of GD across Karnataka. An intensive roving survey was conducted across 130 villages, covering 192 paddy-growing locations and 14 districts of six major rice-growing ecosystems in Karnataka state, India. The highest disease incidence (98 %) was recorded in Suttur village of Nanjanagud Taluk of Mysore District of Kaveri ecosystem. In contrast, the lowest disease incidence (3 %) was recorded in the Kadakal village of Shahpur taluk of Yadgir District of Upper Krishna Project (UKP) of Karnataka state. Among six distinct ecosystems, the highest mean disease incidence was recorded in the coastal ecosystem (85.11 %), followed by the Kaveri ecosystem (74.34 %), which is considered a hot spot for GD incidence. Upper Krishna Project (UKP) and Thunga Bhadra Project (TBP) are considered less risky regions for GD. Analyzing hotspots for GD in Karnataka aids in formulating ecosystems and ecologically specific disease management practices. This study also helps to identify rice cultivars distributed and the disease incidence observed. The highest disease incidence was recorded in bold-seeded cultivars such as Jyothi, KCP-1, Sahyadri Panchamukhi, MO-4, MTU-1001, Kempu Jyothi, Kaje 25-9, Kaje Jaya, Godavari, IR-64, Meenakshi, Sahyadri Kempumukthi, Abhilash, Guttasale, Gandhasale, Uma with more than 90 % disease incidence. Whereas the lowest disease incidence was recorded in small and slender seeded cultivars such as Cross Sona, Sona and Gandu Sona, RNR-15048, Nellore Sona, MTU-1010, BPT-5204 recording < 10 % disease incidence. This is the first intensive study to document the status of GD in the distinct rice ecosystems of Karnataka.

Key words: Grain discoloration, Rice, Disease Incidence, Hot spots, Ecosystems, Cultivars, Disease management

INTRODUCTION

Rice (*Oryza sativa* L.) is the most important staple food crop that suffers from various biotic and abiotic agents, resulting in huge losses to the farming community. India is the source of major rice production; India alone accounted for 47.8 million acres of area, producing 135.7 million tons. In Karnataka, rice cultivation accounts for 13.28 lakh ha, with a production of 42.80 lakh tons and a productivity of 3223 kg ha⁻¹ (Indiastat, 2023). In Karnataka, rice is being cultivated in six ecosystems that include rice-growing Districts such as Koppal, Raichur, Yadgir, Ballari, Vijayanagara, Shimogga, Davanagere, Udupi, Dharwad, Haveri, Uttara Kannada,

Mysore, Mandya, and Chamarajanagara covering various paddy growing ecosystems of Karnataka (Muniraju *et al.*, 2017a; Pramesh *et al.*, 2020a; Pramesh *et al.*, 2020b, Amoghavarsha *et al.*, 2022a; Amoghavarsha *et al.*, 2022b; Amoghavarsha *et al.*, 2022c; Amoghavarsha *et al.*, 2021; Huded *et al.*, 2022; Raghunandana *et al.*, 2023a; Raghunandana *et al.*, 2023b; Sharanabasav *et al.*, 2021). Rice production in Karnataka state was limited due to various pests and diseases. Rice crop is attacked by more than 76 pathogens, including fungi, bacteria, viruses, and mycoplasma-like organisms, causing various diseases in the field (Mustafa and Mohsan, 2017; Pampana *et al.*, 2019). Among the several biotic constraints, diseases caused by fungi, bacteria, viruses, and nematodes cause major economic losses. Among the biotic stresses, diseases are continuously causing much more damage than ever before under the influence of changing environmental conditions. Apart from the major diseases such as leaf blast, neck Blast, sheath blight, brown leaf spot, bacterial leaf blight, false smut and tungro disease, various minor diseases significantly affect paddy production (Sharanabasav *et al.*, 2021; Sharanabasav *et al.*, 2020; Huded *et al.*, 2022; Raghunandana *et al.*, 2023b, Amoghavarsha *et al.*, 2022a, Amoghavarsha *et al.*, 2022c; Muniraju *et al.*, 2017b). Among various minor diseases, rice grain discoloration (GD) has recently emerged with high incidence and severity, posing a major threat to rice cultivation (Ramesh and Lokesh., 1996; Sharanabsav *et al.*, 2023; Sharanabasav *et al.*, 2022b, Sharanabasav *et al.*, 2023a, Sharanabasav *et al.*, 2023b, Sharanabasav *et al.*, 2023c). Grain discoloration was also recorded as Dirty panicle, Grain rot, Glume blight, Panicle blight, etc., in the previous reports (Zeigler and Alvarez. 1989; Raghu *et al.*, 2018; Sharanabasav *et al.*, 2023b).

GD is a serious problem in rice, which affects the grain quality and quantity, decreases the value of rice crops, and causes a great loss in grain and seed production (Sharanabasav *et al.*, 2023b, Raghu *et al.*, 2020; Prathuangwong *et al.* 2013). Brown patches on rice hulls and discolored rice grains were signs of infection that began in the early boot stage. Infected rice seeds have minimum % germination, and when seedlings eventually emerge, they are malformed or abnormal in size, shape, color, and weight. Infected rice seeds carrying pathogenic fungi also act as a source of inoculum for new crops. It was caused by a number of fungal pathogens, including pathogenic and saprophytic pathogens from field and storage, the predominant fungi being *Fusarium* spp., *Pyricularia oryzae*, *Helminthosporium oryzae* and some other fungi like *Alternaria* species, *Cercospora* spp. and *Curvularia* species, *Rhizoctonia solani* which depends

on the existing environmental conditions and also depends on cultivars distributed (Abdelmonem, 2000). Causal agents of GD and their effect on the seed quality were previously described (Kumar *et al.*, 2021). Multiple fungal genera *Bipolaris* (=Drechslera) *oryzae*, *Alternaria padwickii*, *Alternaria alternata*, *Pyricularia oryzae*, *Fusarium moniliformae*, *Fusarium graminearum*, *Nigrospora oryzae*, *Epicoccum nigrum*, *Curvularia lunata*, *Phoma sorghina*, *Aspergillus niger* and *Aspergillus flavus* (Teja *et al.*, 2018), bacterial pathogens such as *Burkholderia gladeoli*, *B. glumae*, *P. ananitis*, *P. agglomerans*, *Pseudomonas oryzae* (Nandakumar *et al.*, 2009; Hou *et al.*, 2020; Kim *et al.*, 2021). These pathogens were reported to cause seed discoloration, seed rot, reduced seed germination, and reduced seedling vigor, making the plants more susceptible and weaker during their early growth period. Fungal pathogens which are reported to be seed-borne are majorly challenging to manage because of their firm establishment as fungal hyphae and their dormant conditions in different seed compartments such as embryo, glume, and endosperm (Butt *et al.*, 2011).

Grain discoloration incidence and distribution have previously been reported from various states of India. However, studies on the evaluation of disease incidence from all traditional rice-growing ecosystems of Karnataka were still unclear. Some studies reported that 2 to 19 % of GD incidence was from Kymore Plateau and Satpura Zone of Madhya Pradesh (Teja *et al.*, 2018). In 2017, Yadahalli and Konnur surveyed for grain discoloration disease in northern Karnataka. However, the assessment of disease incidence across the different paddy-growing ecosystems was not clear. Thus, here we formulated objectives for conducting an intensive survey for disease assessment in the entire Karnataka covering six major paddy-cultivating ecosystems of Karnataka, wherever the paddy is being cultivated. In India, no varieties have been found to be completely resistant to grain discoloration disease. However, some promising tolerant entries were recently nominated for release against GD (Anon., 2019). Still, QTLs associated with GD resistance identification from these local landraces and popular cultivars are still lacking in India. Thus, during the survey, we also aimed to identify and search for some resistant/tolerant cultivars.

Since GD is one of the minor but emerging diseases across paddy-growing countries of the world, clear data on disease incidence across the traditional paddy-growing ecosystems of Karnataka is still lacking. Karnataka state is known for cultivating very diverse paddy cultivars, including landraces, unexplored farmer-saved rice seeds, and elite varieties with

superior agronomical traits. Thus, it's essential to conduct a survey to assess GD across the various locations of Karnataka. This study highlights the complete GD status across Karnataka state, covering all soil types, Irrigation methods, and cultivars.

MATERIALS AND METHODS

Survey area

A random roving survey was conducted across traditional paddy-growing ecosystems of Karnataka, such as the Upper Krishna Project (UKP), Thunga Bhadra Project (TBP), Kavery ecosystem, Hilly ecosystem, Irrigated Bhadra ecosystem, and Coastal ecosystem covering various Districts covering different agro-ecological zones along with geographical coordinates were being noted during survey. Districts included were Ballari, Chamarajanagara, Davanagere, Dharwad, Haveri, Koppal, Mandya, Mysore, Raichur, Shimogga, Udupi, Uttara Kannada, Vijayanagara, Yadgir representing a range of diverse ecologies such as Irrigated, Rainfed, lowland, upland and direct sown conditions with the aim of covering the data on all paddy cultivating conditions across Karnataka (Table 1).

Sampling site and fields

. A total of 192 sampling sites covering fourteen Districts were surveyed, including thirty-seven Taluks', covering 130 villages. Geographical coordinates were noted along with the cultivar name. A total radius of approximately 1347 km of paddy cultivating areas of Karnataka were surveyed, representing different sampling sites (Figure 1). The survey was conducted in *Kharif-2021*, from the grain filling stage to the harvesting stage, since the grain discoloration symptoms appear only upon panicle emergence.

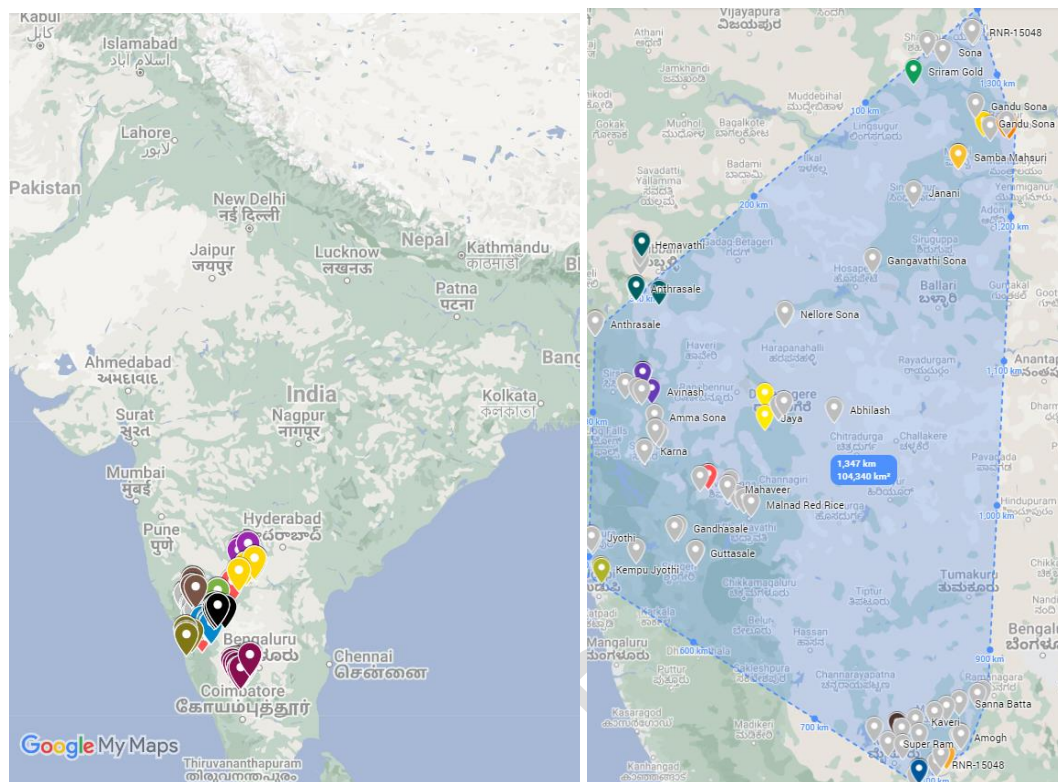


Fig. 1. Google base map showing sampling sites and distance covered during the survey for GD. A. India map showing the sampling sites. B. Distance covered during the survey

Observations recorded

Initially, a 1 m² area was marked and selected randomly across the various locations of the field by using a sq. measuring steel tool. The total number of hills, the total number of productive panicles per hill, and the total number of infected panicles in each hill were noted down. The number of discolored panicles was noted down.

$$\text{Disease Incidence (\%)} = \frac{\text{Number of discolored panicles}}{\text{Total number of panicles sampled}} \times 100$$

Disease incidence i.e., % infected tillers, was calculated based on the formula mentioned below. Average ecosystem disease incidence was noted (Table 2). Based on recorded observations, we identified cold spots and hot spots for the GD.

Data collection and statistical analysis

Data on the disease incidence was taken for all surveyed locations, and additional information on the cultivars grown was noted. Other relevant data on field cultivation history and

varieties being cultivated was noted (Data not shown). Collected data were analyzed using appropriate statistical methods such as ANOVA to compare the disease incidence across the ecosystem. Maps were created using Google Maps- a web-based, free user interface (https://www.google.com/maps/d/u/0/edit?mid=1uRisKQ_asTeUtGB8_3qdeeg0ZOFnPhk&ll=14.549266600246993%2C73.71871723541598&z=8). Maps showed sampling sites, cultivars identified, and disease incidence (Fig. 2).

RESULTS

An intensive roving survey was conducted for assessment of grain discoloration disease during *Kharif-2021* in different rice-growing ecosystems of Karnataka state, namely TBP, UKP, Hilly ecosystem, Coastal ecosystem, and Irrigated Bhadra ecosystem covering various rice-growing Districts of Karnataka. Disease incidence observation was recorded in surveyed villages, along with the cultivar name (Table 1).

Disease intensity was recorded in all the villages surveyed with varied extents. The disease incidence recorded across the surveyed samples was in the range of 3 to 98 %. The highest disease incidence (98 %) was recorded in Suttur village of Nanjanagud Taluk of Mysore District of Kaveri ecosystem. In contrast, the lowest disease incidence (3 %) was recorded in the Kadakal camp village of Shahpur taluk of Yadgir District of UKP of Karnataka state.

Among all five ecosystems surveyed, the highest mean disease incidence (85.11 %) was noticed from the Coastal ecosystem, followed by the Kaveri ecosystem (74.34 %), and the Hilly ecosystem recorded 57.73 %. Meanwhile, the Irrigated Bhadra ecosystem recorded 55.81 % disease incidence. The lowest disease incidence was observed from the UKP ecosystem, with a mean disease incidence of 33.64 %, followed by the TBP ecosystem (51.61 %) (Table 1 and Fig. 3).

UKP ecosystem

Two Districts under the UKP ecosystem were surveyed, including the Raichur and Yadgir Districts. Five Taluks have been covered for disease assessment. A total of seventeen villages were surveyed for the assessment of GD disease incidence. Among them, the highest disease incidence (80 %) was observed in Manchagundala village of Shorapur Taluka of Yadgir District. Followed by Khanapur village of Shahpur Taluka of Yadgir (78 %) and Neelahalli village of Yadgir (76 %). Thus, these villages were considered as GD hot spots in the UKP ecosystem. At the same time, the lowest disease incidence was recorded in Kadakal camp (3 %)

of Shahpur Taluk of Yadgir, followed by Siddapur (5 %), Tadibidi village (8 %) of Shahpur taluks. Meanwhile, in the Raichur District, the lowest disease incidence (8 %) was observed in the Gabburu village of Devadurga taluk. The mean disease incidence of the UKP ecosystem was found to be 33.64 % (Table 1 and Fig. 3).

TBP ecosystem

A total of 23 villages were surveyed in the TBP ecosystem, covering six Taluks of three Districts. The highest disease incidence was recorded in Jawalagera village (90 %) of Sindhanur taluk of Raichur District. Followed by Pothnal village (83 %) of Manvi taluk of Raichur District, Jangamara Kalgudi village (80 %), and Gangavathi rural (75 %) of Gangavathi taluk of Koppal District. The lowest disease incidence (5 %) was observed in Hampasagara village of Hagari Bommanalli taluk of Bellary District, Neer Manvi (5 %), and Maremma Bagudi (5 %) village of Manvi taluk. The mean disease incidence of the TBP ecosystem was 51.61 % (Table 1 and Fig. 3).

Hilly ecosystem

The mean disease incidence observed across surveyed sites was found to be 57.73 %. A total of 26 sites were surveyed to assess the incidence of grain discoloration disease, covering seven Taluks in four Districts. Among the villages surveyed, highest disease incidence was observed in Ammadi village (95 %) of Koppa Taluk of Chikkamagaluru District, followed by Koppa rural (90 %), Jodalli village (90 %) Kalghatagi taluk of Dharwad, Chikkabengale village (85 %) of Sirsi, Kirwatti village (80 %) of Sirsi Taluk, Karehalli village (80 %) of Sagar Taluk of Shimogga District. The lowest disease incidence was observed in Tavanandi village (6 %) of Sorab Taluk of Shimoga District, followed by Malalagadde village (18 %) of Sorab Taluk of Shimogga District (Table 1 and Fig. 3).

Irrigated Bhadra ecosystem

The mean disease incidence observed was 55.81 %. A total of 23 villages were surveyed for disease assessment, covering six Taluks of Districts. The highest disease incidence was observed in the UAHS campus (92 %), Chinnamane village (90 %) of Shimoga, followed by Savalanga village (91 %), Machena Halli (87 %) of Shimoga. The lowest disease incidence (6

%) was found in Shamanur village of Davanagere, followed by Gajanuru village of Shimoga taluk with 10 % disease incidence (Table 1 and Fig. 3).

Kaveri ecosystem

The mean disease incidence observed was 74.34 % across the surveyed locations. Totally 29 villages were surveyed, covering 10 Taluks of 3 Districts. Among the villages surveyed, the highest disease incidence was found in the Suttur village of Nanjangud Taluk (98 %) of Mysore District, followed by Neragyatanahalli village (96 %), Benakanahalli village (92 %) of T. Narsipur Taluka of Mysore District, Byrapatna village (92 %) of Channapatna Taluka of Ramanagara District and Chikka Abbagilu, Angarapura villages of Mandya Districts with 90 % disease incidence respectively. Whereas the lowest disease incidence was recorded in Kohalli village (7 %) and Sosale village (17 %) of T. Narsipur Taluka of Mysore District (Table 1 and Fig. 3).

Coastal ecosystem

The mean disease incidence recorded was 85.11 %. Five villages, covering three taluka of Udupi District, were surveyed. Among the villages surveyed, ZARS, Brahmavara recorded the highest disease incidence (96 %), followed by Shedimane village of Kundapura Taluk of Udupi District (Table 1 and Fig. 3).

Among all six ecosystems surveyed, the highest mean disease incidence (85.11 %) was noticed in the coastal ecosystem, followed by the Kaveri ecosystem (74.34 %) and the hilly ecosystem (57.73%). Meanwhile, the Irrigated Bhadra ecosystem recorded 55.81 % disease incidence. The lowest disease incidence was observed from the UKP ecosystem, with a mean disease incidence of 33.64 %, followed by the TBP ecosystem (51.61 %) (Table 2 and Fig. 4).

Disease incidence on different rice cultivars

In this study, various popular rice varieties under cultivation in surveyed locations show the incidence of the disease but with varying levels of severity. We hypothesize that cultivars are one of the factors for different levels of disease severity in diverse ecological conditions due to their inherent genetic variability. Eighty-nine cultivars are being cultivated across surveyed locations (Table 1). Among all the cultivars surveyed, the highest disease incidence was recorded in bold-seeded rice varieties with more glume area and higher surface area for water retention and fungal colonization. The highest disease was recorded in Cv. Jyothi (98 %), followed by RNR-15048 (96 %), KCP-1 (96 %), Sahyadri Panchamukhi (95 %), MO-4 (94 %), MTU-1001

(91 %), Kempu Jyothi (92 %), Kaje 25-9 (93 %), Kaje Jaya (93 %), Godavari (92 %), IR-64 (IR-64 %), Meenakshi (90 %), MTU-1001 (91 %), Sahyadri Kempumukthi (92 %), Abhilash (95 %), Guttasale (90 %), Gandhasale (90 %), Uma (90 %) (Table 1). At the same time, the lowest disease incidence was recorded in cultivars such as Cross Sona (3 %), Sona (5 %) and Gandu Sona (8 %), RNR-15048 (5 %), Nellore Sona (%), MTU-1010 (7 %), BPT-5204 (8 %). However, few of these cultivars show higher disease incidence in other ecosystems, depending on the prevalent climatic conditions in the existing localities and ecological features of specific ecosystems (Table 1). Generally, cultivars being grown in the TBP and UKP ecosystems recorded lesser disease incidence compared to coastal and Kavery ecosystems (Table 1). Cultivar diversity was different in different ecosystems. Highly diverse cultivars were found across ecosystems, i.e., UKP ecosystem (No=8), TBP ecosystem (No=9), Hilly ecosystem (No=29), Irrigated Bhadra (No=21), Kavery ecosystem (No=26), and Coastal ecosystem (No=15). Comparatively high cultivar diversity was seen in coastal and Kavery ecosystems, i.e. (Southern part of Karnataka), then UKP, TBP ecosystem (Northern part of Karnataka). Our study reported low to high Incidence of GD on cultivar BPT-5204 *i.e* 5 % in Neer Manvi village of Raichur Districts belongs to the TBP ecosystem 80 % in Manchagundala village of Shorapur taluk of Yadgir District (Table 1).

DISCUSSION

Rice GD is an emerging threat to rice cultivation as it reduces grain yield and quality. In India, in recent years, several diseases of rice, such as false smut (Ladhalakshmi *et al.*, 2012; Muniraju *et al.*, 2017a; Pramesh *et al.*, 2020a; Pramesh *et al.*, 2020b, Huded *et al.*, 2022), sheath blight (Nagaraj *et al.*, 2017; Nagaraj *et al.*, 2019a; Nagaraj *et al.*, 2019b) and brown spot (Pramesh *et al.*, 2024), have become more severe (due to impact on yield) and complex (due to multiple pathogens). Similarly, GD is of rice is emerging in almost all rice rice-growing regions of India; however, its status and impact on yield have not been reported. Our survey in the six ecosystems of the state indicated the wider occurrence of this disease where the cultivar-ecosystem combination has influenced the degree of severity. Where coastal Kaveri ecosystems were reported as hotspots for the diseases. Surprisingly, UKP and TBP, where rice is being cultivated extensively with high chemical inputs, recorded less disease incidence. This could be due to the fact that the farmers at UKP and TBP have taken 1-2 sprays of fungicides to protect the crop from neck blast and false smut, and this would have protected the crop from GD.

Similar results were identified by previous workers across the different ecosystems of Karnataka (Pampana Gouda *et al.*, 2020). They reported that during 2017-2018 the mean PDI of 14.95 and 15. At the same time, Kharif-2018 reported a disease incidence of 13.64 and 13.94 % from the Hilly upland and coastal ecosystems, respectively. Our study recorded less disease incidence from TBP compared to Kaveri and coastal ecosystems. However, data from Shivakumar and Patil (2013) showed contrasting results where they recorded higher disease incidence in TBP and moderate disease incidence in Kavery and Hilly ecosystems. This contrasting result may be due to the changing climate and the replacement of cultivars. Raghu *et al.* (2020) also carried out a survey across the paddy fields of Odisha state of India and found heavy incidences of grain discoloration in the cultivated rice genotypes; recorded incidence ranged from 25 to 92 % in different rice genotypes. Rao *et al.* (2000) surveyed 25 villages in the West and East Godavari Districts of Andhra Pradesh state and recorded the GD incidence in several popular rice cultivars such as MTU-1001, MTU-2067, MTU-2077, MTU-7029, BPT-5204, and PLA-1100. The similar cultivars from our study also recorded moderate to severe disease incidence. Our results were also supported by Yuvarani *et al.* (2021), who recorded disease incidence ranging from 22 to 37.5 % across the villages surveyed, which supports our results for moderate disease incidence across the cultivars selected from northern India.

The severity of the disease across the ecosystem and cultivars may be attributed to the lack of inherent resistance and the coincidence of high rainfall, humidity with monocropping, and poor crop management. The non-availability of the GD-resistant varieties in the surveyed cropping area was the main possible reason for higher GD incidence. However, surveyed locations from the northern part of Karnataka showed less disease intensity, thus considered cold spots for GD. In this part of the state, rice is cultivated as a commercial, where intensive monitoring and frequent fungicidal application are followed after flowering to protect the crop from neck-blast and false smut diseases, thus indirectly managing the GD.

A production-oriented survey (POS) conducted by IIRR in 2023 recorded the low intensities of GD disease in Andhra Pradesh, whereas in Kerala, it is shown moderate to high incidences. GD was found widespread with low to moderate intensity from Uttarakhand, Maharashtra, Tamil Nadu, Uttarakhand, Haryana, and Andhra Pradesh, which were recorded as having low disease intensity (Anon, 2023b).

Presently, rice cultivation in India is affected by several diseases, such as blast, brown spot, sheath blight, false smut, sheath rot, foot rot, stem rot, and bacterial leaf blight. However, most of these are being managed by the use of resistant cultivars, fungicides, bactericides, and bioagents (Pramesh *et al.*, 2016a; Pramesh *et al.*, 2016b; Pramesh *et al.*, 2016c; Pramesh *et al.*, 2017a; Pramesh *et al.*, 2017b; Pramesh *et al.*, 2017c; Pramesh *et al.*, 2017d; Pramesh *et al.*, 2017e; Muniraju *et al.*, 2017b; Prasannakumar *et al.*, 2018; Amruta *et al.*, 2019; Yadav *et al.*, 2019a; Yadav *et al.*, 2019b; Raghu *et al.*, 2020; Sharanabasav *et al.*, 2020; Pramesh *et al.*, 2020; Amoghavarsha *et al.*, 2021; Sharma *et al.*, 2021; Annegowda *et al.*, 2021; Prasanna *et al.*, 2021; Pramesh *et al.*, 2023c; Jeevan *et al.*, 2023; Usha *et al.*, 2024; Devanna *et al.*, 2024; Pramesh *et al.*, 2024b; Alase *et al.*, 2024). As the GD is becoming widespread across all rice ecosystems of the country and showing all potential to cause yield and quality losses, systematic research efforts are required to identify the chemical, biological, and resistance-based strategies for managing GD in India.

Conclusion

Grain discoloration is one of the emerging, complex disease of rice, causing the quantitative yield loss and qualitative loss in terms of discolored grains. Although sporadic in nature, disease could be found in all rice growing areas of the world including India in varied extent. Thus, we conducted roving survey to assess the grain discoloration disease incidence across different paddy growing ecosystems of the world. We surveyed totally six ecosystems covering fourteen districts of Karnataka state India. Among them highest disease mean incidence was recorded in Coastal ecosystem followed by Kaveri ecosystem. Thus, considered as hotspots for grain discoloration disease of rice. However, Upper Krishna Project recorded least mean disease incidence followed by Thunga Bhadra Project, considered as cold spot for GD disease. Additionally, study also highlights the status of GD on cultivars distributed and varietal profile among the surveyed locations, which has impact on identification of novel source of disease resistance against GD. Our results highlighted, small seeded cultivars such as, Cross Sona, Sona Mahsuri, RNR-15048, Nellore Sona, BPT-5204, and Gangavathi emergence recorded lesser disease incidence. However, bod seeded cultivars such as, MO-4, MTU-1001, Kempu Jyothi and IR-64 recorded the higher disease incidence. Conclusively, southern part of Karnataka

considered as hotspots and northern part of the Karnataka considered as cold spots for GD disease. Aftermath, this intensive survey study is useful in understanding the status of GD in Karnataka and could contribute effectively in disease management in specific paddy ecosystems.

Disclaimer (Artificial intelligence)

Option 1:

Author(s) hereby declare that NO generative AI technologies such as Large Language Models (ChatGPT, COPILOT, etc.) and text-to-image generators have been used during the writing or editing of this manuscript.

Option 2:

Author(s) hereby declare that generative AI technologies such as Large Language Models, etc. have been used during the writing or editing of manuscripts. This explanation will include the name, version, model, and source of the generative AI technology and as well as all input prompts provided to the generative AI technology.

Details of the AI usage are given below:

- 1.
- 2.
- 3.

REFERENCES

- Abdelmonem, A. M., (2000). Status of seed pathology and seed health testing in Egypt. *Seed Sci. Res.*, 28(3), 533-547.
- Alase, S., Pramesh, D., Prasanna Kumar, M. K., Sridhara, S., Elansary, H. O., Rashwan, M. A., *et al.* (2024). Field-scale efficacy of bioformulations, bioagents, and fungicides for controlling rice false smut disease: an integrated approach. *Cogent Food & Agriculture*. 10(1):2371934.
- Amoghavarsha, C, Ganesh, R. Naik, Devanna Pramesh, Manjunatha, K. Naik, A. Raghunandana, E. and *et al.* (2022a). Prevalence and distribution of rice blast disease in different rice ecosystems of Karnataka, India. *Oryza*. 59 (3):330-335.
- Amoghavarsha, C, Pramesh, D, Naik, G. R, Naik, M. K, Yadav, M. K, Ngangkham, U., and *et al.* (2022b). Morpho-molecular diversity and avirulence genes distribution among the

- diverse isolates of *Magnaporthe oryzae* from Southern India. Journal of Applied Microbiology. 132(2):1275-90.
- Amoghavarsha, C., Pramesh, D., Sridhara, S., Patil, B., Shil, S., Naik, G. R., *et al.* (2022c). Spatial distribution and identification of potential risk regions to rice blast disease in different rice ecosystems of Karnataka. Scientific reports. 6:12(1):7403.
- Amoghavarsha, C., Pramesh, D., Chidanandappa, E., Sharanabasav, H., Raghunandana, A., Prasanna Kumar, M.K., Hosahatti, R. and Saddamhusen, A., (2021). Chemicals for the management of paddy blast disease. Blast Disease of Cereal Crops: Evolution and Adaptation in Context of Climate Change, 59-81.
- Amruta, N. A, Kumar, M. K, Kandikattu, H. K., Sarika, G., Puneeth, M. E., Ranjitha, H. P, Vishwanath, K, Manjunatha, C, Pramesh, D, Mahesh, H. B, Narayanaswamy S. 2019, Bio-priming of rice seeds with novel bacterial strains, for management of seedborne *Magnaporthe oryzae* L. Plant Physiol. Rep. <https://doi.org/10.1007/s40502-019-00492-6>
- Annegowda, D. C., Prasannakumar, M. K., Mahesh, H. B., Siddabasappa, C. B., Devanna, P., Banakar, S. N., Manojkumar, H. B. and Prasad, S. R., (2021). Rice blast disease in India: present status and future challenges. Integrative advances in rice research, 21. 157-197.
- Anon., (2019), ICAR-ICAR-Indian Institute Rice Research, AICRIP-Annual Progress Report, Hyderabad.
- Anon., (2023a), Annual progress report 2023, ICAR-National Rice Research Institute, Cuttak
- Anon., (2023b), Production oriented survey, ICAR-Indian Institute Rice Research, Hyderabad.
- Chittaragi, A, Pramesh, D., Naik, G. R., Naik, MK., Yadav, M. K., Ngangkham, U., Siddepalli, M. E., Nayak, A., Kumar, M. K, Eranna, C., (2022). Multilocus sequence analysis and identification of mating-type idiomorphs distribution in *Magnaporthe oryzae* population of Karnataka state of India. Journal of Applied Microbiology. 132(6):4413-29.
- Pramesh, D., Maruti, A., Saddamhusen, K. M., Muniraju and G. S. & Guruprasad (2016a). A New Combination Fungicide Active Ingredients for Management of Sheath Blight Disease of Paddy. Advances in Research, 8(5): 1-7.
- Devanna, B. N, Sucharita, S., Sunitha, N. C., Anilkumar, C., Singh, P. K., Pramesh, D., Samantaray, S., Behera, L., Katara, J. L., Parameswaran C, & Rout P. (2024). Refinement of rice blast disease resistance QTLs and gene networks through meta-QTL analysis. Scientific Reports. 14(1):16458.

- Hou, Y., Zhang, Y., Yu, L., Ding, X., Liu, L., Wang, L. and Huang, S., (2020) First report of *Pseudomonas oryzihabitans* causing rice panicle blight and grain discoloration in China. *Plant Disease*, *104*(11): 3055.
- Huded, S., Pramesh, D., Chittaragi, A., Sridhara, S., Chidanandappa, E., Prasannakumar, M. K., *et al.*, (2022). Spatial distribution patterns for identifying risk areas associated with false smut disease of rice in southern India. *Agronomy*. (12):2947.
- Jeevan, B., Hosahatti, R., Koti, P. S., Devappa, V. H., Ngangkham, U., Devanna, P., Yadav, M. K., Mishra, K. K., Aditya, J. P., Boraiah, P. K., Gaber, A. & Hossain, A., (2023). Phenotypic and Genotypic screening of fifty-two rice (*Oryza sativa* L.) genotypes for desirable cultivars against blast disease. *Plos one*, *18*(3), p.e0280762.
- Kim, N., Mannaa, M., Kim, J., Ra, J. E., Kim, S. M., Lee, C., Lee, H. H. & Seo, Y. S., (2021) The in vitro and in planta interspecies interactions among rice-pathogenic *Burkholderia* species. *Plant Dis.*, *105*(1): 134-143.
- Kumar, J., Kumar, B., Prajapati, M. K., Bihari, C. and Rai, A., (2021). Seed discoloration in rice: Causes and their effect on seed quality. *Journal of Pharmacognosy and Phytochemistry*, *10*(1): 2639-2643.
- Ladhalakshmi, D, Laha, G. S., Singh R, Karthikeyan, A., Mangrauthia, S. K, Sundaram, R. M., Thukkaiyannan, P., & Viraktamath, B. C (2012). Isolation and characterization of *Ustilaginoidea virens* and survey of false smut disease of rice in India. *Phytoparasitica* *40*(2):171–176
- Muniraju, K. M, Pramesh, D, Mallesh, S. B, Mallikarjun, K, & Guruprasad, G. S., (2017a). Disease severity and yield losses caused by false smut disease of rice in different rice ecosystems of Karnataka. *International Journal of Microbiology Research*, ISSN: 0975-5276.
- Muniraju, K. M, Pramesh, D, Mallesh, S. B, Mallikarjun, K, Guruprasad, G. S., (2017b), Novel fungicides Pramesh for the management of false smut disease of rice caused by *Ustilaginoidea virens*. *Int. J. Curr. Microbiol. Appl. Sci.*; 6:2664-9.
- Mustafa, A. and Mohsan, M., (2017). Mycoflora associated with grain discolouration of common rice (*Oryza sativa* L.) cultivars and their management. *Int. J. Adv. Res. Biol. Sci*, *4*(4): 1-5.

- Nagaraj, B. T, Gururaj Sunkad, P. D, Naik, Manjunath, K. Patil, Mahanthesh, B., Yadav Manoj K, & Patil Naveenkumar, B. (2019a). Morphological, genetic and virulence diversity of *Rhizoctonia solani* isolates from different rice growing regions of Southern India. *Research Journal of Biotechnology*. 14:5.
- Nagaraj, B. T, Sunkad, G., Devanna, P., Naik, M. K, & Patil, M. B. (2019b). Characterization of *Rhizoctonia* species complex associated with rice sheath disease in Karnataka. *Agricultural Research*. 1 (8):191-6.
- Nagaraj, B. T, Sunkad, G., Pramesh, D., Naik, M. K, & Patil, M. B. (2017). Host range studies of rice sheath blight fungus *Rhizoctonia solani* (Kuhn). *Int. J. Curr. Microbiol. App. Sci.* 6(11):3856-64.
- Nandakumar, R., Shahjahan, A. K. M., Yuan, X. L., Dickstein, E. R., Groth, D. E., Clark, C. A., Cartwright, R. D. & Rush, M. C., (2009). *Burkholderia glumae* and *B. gladioli* cause bacterial panicle blight in rice in the southern United States. *Plant Disease*, 93(9): 896-905.
- Pampana Gouda. B., T. Narendrappa, B. S. Chethana & Prasanna Kumar. M. K., 2020, Status and distribution of rice grain discolouration in different ecosystems in Karnataka, India. *Int. J. Curr. Microbiol. App. Sci.*, 9(05): 796-805. doi: <https://doi.org/10.20546/ijcmas.2020.905.088>
- Pampana, G. B., Narendrappa, T., Chethana, B. S. & Deepak, C. A., (2019). Screening of Rice (*Oryza sativa* L.) genotypes against grain discoloration Disease. *Int. J. Curr. Microbiol. App. Sci.*, 8: 1572-1577.
- Pramesh, D., Alase, S., Muniraju, K. M., & Kumara, M. K., (2017a). A combination fungicide for the management of sheath blight, sheath rot and stem rot diseases of paddy. *International Journal of Current Microbiology and Applied Sciences*. 6(9):3500-9.
- Pramesh, D., Alase, S., Muniraju, K. M., & Kumara, M. K. (2017b). Management of stem rot disease of paddy using fungicides. *International Journal of Current Microbiology and Applied Sciences*. 6(10):3046-51.
- Pramesh, D, Chidanandappa, E, Prasanna Kumar, M. K, Chittaragi, A, Yadav, M. K, Pushpa H. D, Parivallal, B., Sumangala, N., Raj E. E., & Narayan, K. S., (2023c), Moderate disease resistance in rice cultivars enhances the bio-efficacy of fungicides against blast disease. *Indian Phytopathology*. 76(1):141-9.

- Pramesh, D, Chittaragi, A, Nagaraj, T, Saddamhusen, A, Chidanandappa, E, Sharanabasav, H, Raghunandana, A, Kumar, M. M, Huruli S, Mahantashivayogayya K, & Reddy B. G., (2020a). Bio-efficacy of combination fungicide Prochloraz 27%+ tricyclazole 23% SE for the management of blast disease of rice. *Journal of Pharmacognosy and Phytochemistry*. 9(4):3027-32.
- Pramesh, D., Muniraju, K., Mallikarjun, K., Guruprasad, G., Mahantashivayogayya, K., Reddy, B., Gowdar, S., Chethana, B. (2017c). Bio-efficacy of a combination fungicide against blast and sheath blight diseases of paddy. *Journal of Experimental Agriculture International*.14(4):1-8.
- Pramesh, D., Nataraj, K., Guruprasad, G., Mahantashivayogayya, K., Reddy, B. (2016b). Evaluation of a new strobilurin group of fungicide for the management of blast disease of paddy. *American Journal of Experimental Agriculture*. 13(5):1-6.
- Pramesh, D., Prasannakumar, M. K., Muniraju, K. M., Mahesh, H. B., Pushpa, H. D., Manjunatha, C., Saddamhusen, A., Chidanandappa, E., Yadav, M. K., Kumara, M. K., Sharanabasav, H. (2020b). Comparative genomics of rice false smut fungi *Ustilaginoidea virens* Uv-Gvt strain from India reveals genetic diversity and phylogenetic divergence. *3 Biotech*. 10:1-4.
- Pramesh, D., Raghunandana, A., Harish, M. N., Kumar, M. P., Sachin, K. S., Kiranakumara, M., Usha, I., Tulasi, M., Priya, D. P., Pushpa, H., Manjunatha, C. (2024). The interaction of fungicides and nitrogen dose under two crop establishment methods influences the severity of brown spot disease in rice. *Crop Protection*. 184:106817.
- Pramesh, D., Saddam, A., Muniraju, K., & Guruprasad, G. (2017d). Bronopol (2-Bromo-2-Nitropropane-1, 3-diol), a chlorine based chemical compound for the management of bacterial leaf blight of rice. *International Journal of Plant & Soil Science*.15(5):1-7.
- Pramesh, D., Saddamhusen, A., Muniraju, K. M., & Guruprasad, G. S. (2017e). A new combination fungicide active ingredient for management of sheath blight disease of paddy. *Advances in Research*. ;8(5):1-7.
- Prasanna, S., Prasannakumar, M. K., Mahesh, H. B., Babu, G. V., Kirnaymayee, P., Puneeth, M. E., Narayan, K. S., & Pramesh, D. (2021). Diversity and biopotential of *Bacillus velezensis* strains A6 and P42 against rice blast and bacterial blight of pomegranate. *Archives of Microbiology*. 03(7):4189-99.

- Prasannakumar, M. K., B. S. Chethana, D. Pramesh, & H. G. Umashankar. (2018). Bioefficacy studies of *Pseudomonas fluorescens* against sheath blight disease of rice. *Green Farming*, 157-160.
- Prathuangwong, S., Athinuwat, D., Chuaboon, W., Chatnaparat, T., & Buensanteai, N. (2013). Bioformulation *Pseudomonas fluorescens* PfALR2 for management of rice sheath blight. *Afr. J. Microbiol. Res.*, 7(47): 5274–5283.
- Raghu, S., Baite, M. S., Patil, N. B., Sanghamitra, P., Yadav, M. K., Prabhukarthikeyan, S. R., Keerthana, U., Pandi, G. G., Aravindan, S. & Rath, P.C., (2020). Grain discoloration in popular rice varieties (*Oryza sativa* L) in eastern India, associated mycoflora, quality losses and management using selected biocontrol agents. *Journal of Stored Products Research*, 88: 101682.
- Raghu, S., Yadav, M. K., Prabhukarthikeyan, S. R., Baite, M. S., Lenka, S. & Jena, M., (2018). Occurrence, pathogenicity, characterization of *Fusarium fujikuroi* causing rice bakanae disease from Odisha and in vitro management. *ORYZA-An International Journal on Rice*, 55(1): 214-223.
- Raghunandana A., Pramesh D., Gururaj S., Amoghavarsha C., Yadav M. K., Ngangkham U., Pushpa H. D., Prasannakumar M. K., Raghavendra B. T., Harischandra N. R., Manjunatha S.E., & Yenjerappa S.T. (2023a). Genetic diversity and pathotype profiling of *Xanthomonas oryzae* pv. *oryzae* isolates from diverse rice growing ecosystems of Karnataka state of India. *Plant. Protect. Sci.*, 59: 31–47.
- Raghunandana, A., Sunkad Gururaj, B. T. Raghavendra, K. Yadav Manoj, S. T. Yanjeerappa, Naik R. Harischandra, P. R. Badariprasad, & D. Pramesh. (2023b). Severity and distribution of bacterial leaf blight of rice in different rice growing ecosystems of Karnataka state of India. 297-303.
- Rao, P. R. M., Bhavani, B., Rao, T. R.M. & Reddy, P. R., (2000). Spikelet sterility/grain discoloration in rice in Andhra Pradesh, India. *International Rice Research Notes*, 25(3): 40.
- Sharanabasav, H., Pramesh, D., Chidanandappa, E., Saddamhusen, A., Chittaragi, A., Raghunandana, A., Kumar, M. P., Raghavendra, B. T., Naik, R. H., Mallesh, S. B. & Mahantashivayogayya, K., (2020). Field evaluation of fungicides against false smut disease of rice. *Journal of Pharmacognosy and Phytochemistry*, 9(3): 1453-1456.

- Sharanabasav Huded, S. K. Jayalakshmi, D. Pramesh, Gururaj Sunkad, Sumangala N., Pushpa Hanasi, Harischandra R. Naik, Pampangouda & Yenjerappa, S.T. (2023c). Isolation and identification of microflora associated with grain discoloration disease of rice through culturomics”. Abstract. National P.G Research Conference-2023. University of Agricultural Sciences, Raichur, 7-8 September, 2023
- Sharanabasav Huded, S. K. Jayalakshmi, D. Pramesh, N. Sumangala, Gururaj Sunkad, Harischandra R. Naik, M. K. Prasannakumar, I. Usha, M. Tulasi, & D. P. Priya. “Isolation and identification of microbiome associated with grain discoloration disease of rice”. IPS Platinum Jubilee Conference on “*Plant and Soil Health Management: Issues and Innovations*”, February 2-4, 2023a; University of Mysore, Mysuru, Karnataka, India.
- Sharanabasav Huded, S.K. Jayalakshmi, D. Pramesh, N. Sumangala, Gururaj Sunkad, Harischandra R. Naik, M. K. Prasannakumar, M. Lakshmikanth, I. Usha¹, M. Tulasi, D. Padma Priya & Pampangouda. (2023b.) “Estimation of yield loss in paddy due to grain discoloration disease”. IPS Platinum Jubilee Conference on “*Plant and Soil Health Management: Issues and Innovations*”, February 2-4, 2023b; University of Mysore, Mysuru, Karnataka, India.
- Sharanabasav Huded., Jayalakshmi S. K., Pramesh D., Gururaj Sunkad, Usha Indrajeet, Harischandra Naik, Sumangala N., Pampangouda & Yenjerappa, S. T. (2022b). “Isolation and molecular identification of bacterial microbiome associated with Grain discoloration disease infected seeds of rice using culturomics approach”. Abstract. *Biotechnology – Trends and Future Prospects*. 166
- Sharma, S. K., Sharma, D., Meena, R. P., Yadav, M. K., Hosahatti, R., Dubey, A. K., Sharma, P., Kumar, S., Pramesh, D., Nabi, S. U. & Bhuvaneshwari, S., (2021). Recent insights in rice blast disease resistance. Blast Disease of Cereal Crops: Evolution and Adaptation in Context of Climate Change, 9-123.
- Shivakumar & M. B. Patil., Survey and surveillance on major rice diseases severity in Karnataka, India. 2023, International journal of environment and climate change. 13(11): 2772:2780
- Teja, T. R., Masurkar, P., Bhale, M. S. & Koutu, G. K., (2018). Assessment on Prevalence and Distribution of Diseases of Rice in Kymore Plateau and Satpura Zone of Madhya Pradesh. Int. J. Curr. Microbiol. App. Sci, 7(11): 2240-2252.

- Usha, I., Pramesh, D., Shrikanth, B., Raghunandana, A., Harish, M. N., Prasannakumar, M. K., Sharanabasav H, & Manjunatha C. (2024). Thymol—a plant-based monoterpene phenol compound of an essential oil for the management of sheath blight disease of rice. *Pest Management Science*. <https://doi.org/10.1002/ps.8362>
- Yadav, M. K., Aravindan, S., Ngangkham, U., Raghu, S., Prabhukarthikeyan, S. R., Keerthana, U., Marndi, B. C., Adak, T., Munda, S., Deshmukh, R., & Pramesh, D. (2019a). Blast resistance in Indian rice landraces: Genetic dissection by gene specific markers. *Plos one*.14(1):e0211061.
- Yadav, M. K., Aravindan, S., Ngangkham, U., Prabhukarthikeyan, S. R., Keerthana, U., Raghu, S., Pramesh, D., Banerjee, A., Roy, S., Sanghamitra, P. & Adak, T., (2019b). Candidate screening of blast resistance donors for rice breeding. *Journal of Genetics*, 98, 1-13.
- Yuvarani, R., Brindhadevi, S., Thiruvudainambi, S., Theradimani, M., Vanniarajan, C. & Renuka, R., (2021). Morphological and molecular characterization of *Curvularia* species associated with grain discoloration of rice in Tamil Nadu. *The Pharma Innovation Journal*, 10(10): 1791-1796.
- Zeigler, R. S. & Alvarez, E., (1989). Grain discoloration of rice caused by *Pseudomonas glumae* in Latin America. *Plant dis.*, 73(4).

Table 1. Survey for assessment of grain discoloration disease incidence across traditional rice growing ecosystems of Karnataka

Sl. No.	Ecosystem	Geographical co-ordinates		Village	Taluk	District	Cultivar	Disease incidence (%)
1	Upper Krishna Project (UKP)	16.1157	77.1242	Kalmala	Raichur	Raichur	MTU-1010	26
2		16.1158	77.1240				Gandu Sona	44
3		16.1004	77.1510	Kasbe Camp			BPT-5204	45
4		16.393853	77.350209	Krishna Mandal			BPT-2595	55
5		16.1753	77.0936	Gabburu	Devadurga	Raichur	Gandu Sona	8
6		16.3844	76.5643	Gundagurthi	Shahpur	Yadgir	Sona	12
7		16.4231	77.0109	Khanapur			RNR-15048	78
8		16.4225	77.0105				BPT-5204	78
9		16.4105	76.5836	Tadibidi			Sona	8
10		16.3935	76.5824	Hundekal			BPT-5204	8
11		16.2137	76.2527	Kadakal camp			Cross Sona	3
12		16.3253	76.4428	Siddapur			Sona	5
13		16.4331	77.0713	Khanapur			BPT-5204	30
14		17.0606	76.1028	Vibhoothi Halli	BPT-5204	7		
15		16.3546	76.4201	Manchagundala	Shorapur	Yadgir	BPT-5204	80
16		16.3530	76.4235				Sriram Gold	18
17		16.4653	77.0856	Yadgir	Yadgir	Yadgir	RNR-15048	18
18		16.3700	77.1735	Neelahalli			RNR-15048	76
19		16.283612	77.17196	Sulthanpur			Pure Sona	48
20		16.3700	77.1735	Neelahalli			BPT-5204	37
21		16.3264	76.4435	Siddapura			RNR-15048	14
22		16.2649	76.3726				BPT-5204	44
23	Thungabhadra Project ecosystem (TBP ecosystem)	15.4681	76.5762	Marali	Gangavathi	Koppal	Nellore Sona	30
24		15.2708	76.3133	Gangavathi Rural			GGV-05-01	75
25		15.2729	76.3333	Jangamara Kalgudi			GNV-10-89	80
26		15.2741	76.4445	Sugur			GGV-05-01	70

27		15.2758	76.4301	Manur			GGV-05-01	65
28		15.3118	76.12911	Arlahalli			BPT-5204	75
29		15.354693	76.491759	Anegundi			Gangavathi Sona	60
30		15.3006	76.3000	Kesarahatti			BPT-5204	65
31		15.2411	76.3554	Kampli	Kampli	Ballary	BPT-5204	70
32		14.2635	75.0453	Hampasagara	Hagari Bommanalli	Ballary	RNR-15048	5
33		14.985259	75.930358	Nagati Basapur	Huvina Hadagali	Vijayanagara	Sona Mahsoori	40
34		14.985275	75.930413				Nellore Sona	28
35		15.121142	76.040149	Huvina Hadagali			BPT-5204	22
36		15.0030	75.5510	Kanakana Halli			BPT-5204	30
37		16.0235	77.0608	Neer manvi	Manvi	Raichur	RNR-15048	75
38		15.901885	76.867025	Pothnal			RNR-15048	83
39		15.90195	76.86699				Samba Mahsuri	75
40		15.90978	76.867046				Samba Mahsuri	80
41		15.900585	76.864709				Samba Mahsuri	78
42		16.157448	77.238134	Maremma Bagudi			Nellore Sona	5
43		16.049688	77.115102	Neer manvi			BPT-5204	5
44		15.855923	76.840057	Jawalgera			Sindhanur	Raichur
45		15.5153	76.4918		BPT-5204	25		
46		15.855769	76.839952	Turikatte, Jawalagera	Janani	40		
47		15.3944	76.4155	Hanchinal Camp	BPT-5204	14		
48		15.5648	76.5534	Amareshwara camp	BPT-5204	70		
49		15.4633	76.4619	Sindhanuru	RNR-15048	18		
50		15.796416	76.77816	Konganahatti	Janani	72		
51	Hilly ecosystem	14.975522	74.760899	Bavigadde	Yallapura	Uttara Kannada		
52		14.97561	74.760587				Sannavallya	58
53		15.07119	74.872985	Kiravatti			Anthrasale	49
54		15.0310	74.5113				MO-4	30
55		15.071134	74.873039		MTU-1001	45		
56		15.07119	74.872985		Sirsi	Uttara Kannada	Avinash	78
57		15.07119	74.872988		Intan	60		

58		15.07119	74.872992				Abhilash	80		
59		15.071148	74.873008				Hemavathi	45		
60		15.07112	74.873036				Abilash	35		
61		15.071118	74.873029				Abilash	45		
62		15.071118	74.873031				MTU-1001	25		
63		15.071118	74.873029				Amruth	65		
64		15.053923	74.843233				MTU-1010	50		
65		14.58318	74.893661	Unchalli			Jigguvaltiga	37		
66		14.3356	74.5705	Navanagere			Jiggavaltiga	50		
67		14.551279	74.968708	Chikkabengale			MTU-1001	85		
68		14.559569	74.983713	Gudnapur			Abhilash	30		
69		14.548687	74.998977	Banavasi			Speaker	65		
70		14.18369	75.046618	Bheemaneri			BPT-5204	72		
71		14.1454	75.0554	Kambalikoppa	Sagara	Shimoga	IR-20	60		
72		14.0404	75.0905	Karehalli			Karna	80		
73		14.25853	75.101615	Duguru			Amruth	68		
74		14.472926	75.048646	Thekkuru			Amma Sona	50		
75		14.418552	75.078285	Karekoppa			Mahaveer	62		
76		14.305098	75.106107	Hosa Malalagadde	Soraba	Shimoga	Intan	64		
77		14.305051	75.106154				MTU-1001	25		
78		14.2635	75.0453	Tavanandi			Speaker	6		
79		14.25853	75.101615	Ulavi			Govardhana	65		
80		14.1718	75.0618	Malalagadde			Pragathi	18		
81		13.606828	75.143598	Kaimara	Tirthahalli	Shimoga	MR-272	68		
82		13.902321	75.561366	Harakere			Gandhasale	82		
83		13.682513	75.221454	Shivarajapura			IT	72		
84		15.4146	74.976505	Dharwad	Dharwad	Dharwad	Hemavathi	87		
85		15.41461	74.976487				Doddasali	75		
86		15.2046	74.5959	Jodalli			Gandhasale	90		
87		15.247766	75.005671	Hirehonnalli	Kalghatgi	Dharwad	Anthrasale	50		
88		15.414587	74.976511	Yarikoppa			IR-64	54		
89		15.414589	74.976507				Intan	70		

90		15.355093	75.007522				Ankursale	72
91		15.355008	75.007579				Jiggavaltiga	20
92		15.355011	75.007574				Amruth	65
93		15.355027	75.007552	Dhummawada			Rasi	78
94		15.355051	75.007546				Vijetha	80
95		15.355008	75.007579				Abilash	32
96		15.357076	75.012972				Phalguni	29
97		13.5247	75.3352	Koppa rural	Koppa	Chikkamagaluru	Guttasale	90
98		13.5420	75.3331	Ammadi			Abhilash	95
99		13.4329	75.1713	Nellasara			RNR-15048	20
100		13.5821	75.3438	UAHS			Sahyadri siri	50
101		14.002604	75.451715				Sannabatta	85
102		14.002576	75.451701	Ayanuru			Jyothi	78
103		14.002604	75.451715				Karibhatta	84
104		13.996838	75.377073	Chinnamane			Meenakshi	90
105		13.847416	75.526271	Gajanuru	Shimoga	Shimoga	Jyothi	10
106		13.755831	75.466968	Mandagadde			MTU-1001	28
107		13.5829	75.3440	UAHS, Shimoga			Red rice	87
108		13.5311	75.3802	Nidige, Shimoga			Jaya	80
109	Irrigated Bhadra ecosystem	13.972455	75.577863	UAHS, Shimoga			Sahyadri Kempumukthi	92
110		13.892929	75.630293	Machena Halli			Jyothi	87
111		13.855569	75.675644	Ujjanipura, Bullapura			Kempu Jyothi	86
112		13.862637	75.677044	Jannapura, Kadadakatte	Bhadravati	Shimoga	Hemavathi	85
113		14.076517	75.157488				Prasanna	60
114		14.068259	75.189608	Yedehalli			Malnad Red Rice	55
115		13.5112	75.3907	Siriyuru Thanda			MO-4	84
116		14.0615	75.3153	Savalanga			RNR-15048	25
117		14.1347	75.3811	Honnalli	Honnalli	Davanagere	RNR-15048	25
118		14.1255	75.3642	Chaudihalli			Vijetha	25
119	14.105759	75.529932	Savalanga/Sovalanga			MTU-1001	91	

120		14.240751	75.663451	Gollarahalli			Abhilash	75
121		14.3538	75.5045	Kurubara halli			RNR-15048	38
122		14.3439	75.4919	Deeturu			Sriram Gold	35
123		14.393306	75.822434	Budihala	Harihar	Davanagere	Samba Mahsoori	32
124		14.393139	75.822482				Jaya	27
125		14.562909	75.828248	Karalahalli			IR-20	48
126		14.602851	75.84673	Kurubarahalli			RNR-15048	62
127		14.3609	75.4908	Sarathi			RNR-15048	76
128		14.2614	75.5425	Shamanur	Davanagere	Davanagere	RNR-15048	6
129		14.433271	75.881072		Davanagere	Davanagere	RNR-15048	35
130		14.3730	76.0623	Budihal	Harapanahalli	Davanagere	Sriram Gold	25
131	Kaveri ecosystem	12.3546	77.0333	Madduru	Madduru	Mandya	Sanna Batta	78
132		12.345777	76.895886	Chamanahalli			Super Ammam	80
133		12.316827	77.034074	Kyathnaalli	Malvalli	Mandya	Amogh	88
134		12.262917	76.980728	Chikka Abbagilu			Kavery	90
135		12.1510	76.5815				Swetha 45	70
136		12.1532	76.5937	Hullamaballi			Omkar	75
137		12.2034	77.0042	Hangarapura			Minilong	77
138		12.3344	76.5814	Mallaiahnadoddi	Mandya	Mandya	Super Ammam	64
139		12.3215	76.5518	Mandya			Meenakshi	80
140		12.480172	76.768086	Kodishettipura			Kaveri	45
141		12.347429	77.010507	Angarapura			IR-64	90
142		12.1239	76.2749	Kyathanahalli	Pandavapura	Mandya	Omkar	69
143		12.2745	76.3929				Minilong 11	76
144		12.412226	76.669475	Karimanti	Shrirangapattana	Mandya	Mahaveer	70
145		12.41808	76.724646	Srinivasapura Agrahara			MTU-1001 13	60
146		12.2605	76.4215	Shanti koppalu			Super Ammam	86
147		12.2311	76.4824	Gende Hosalli			Amrutha	75
148		12.234726	76.912141	Sosale	T. Narsipur	Mysore	RNR-15048 15	17
149		12.1706	76.5221	Kohalli			MTU-1010	7
150		12.228255	76.913129	Benakanahalli			RNR-15048	92

151		12.228255	76.913137	Benakanahalli-2			RNR-15048	89
152		12.345777	76.895886	Basavanahalli			Meenakshi	90
153		12.2123	76.5746	Hoovinakoppala			Jyothi	69
154		12.0909	76.5256	Vatalu			KMP-225	70
155		12.262917	76.98701	Neragyatanahalli			Dodda Batta 19	89
156		12.262936	76.9807098				RNR-15048	96
157		12.3343	76.5810	Hutagalli	Mysore	Mysore	Super Ram	74
158		12.366044	76.663359	Siddalingapura			Jyothi	84
159		12.366064	76.663334				KMP-220 20	86
160		12.167773	76.793803	Suttur	Nanjangud	Mysore	IR-64	77
161		12.158876	76.792296	Biligere			RNR-15048	58
162		12.167773	76.793807	Sutturu			Jayakrishna	65
163		12.167768	76.793807				Amogh	75
164		12.163208	76.787849				Amogh	85
165		12.167766	76.7938				Jyothi	98
166		12.163192	76.787859				IR-64	94
167		12.0853	76.4714	Kupparavalli			IR-64	40
168		12.0855	76.4715				Penna Super	76
169		12.0651	76.4452	Gonahalli			Jyothi	75
170		12.167769	76.793796	Sutturu	Amogh	82		
171		11.5952	76.2216	Magudilu	H. D. Kote	Mysore	KMP-220	60
172		12.554293	76.972849	Mallur	Channapatna	Ramanagara	Sanna Batta 25	78
173		12.647003	77.175695				MTU-1001	80
174		12.554369	76.97288	Byrapatna			Godavari	92
175	Coastal ecosystem	13.535745	75.005555	Mandi Moorkai	Hebri	Udupi	Kajejaya	84
176		13.535768	75.005542				Mo-4	73
177		13.535772	75.005549				Jaya	82
178		13.555604	74.969163	Shedimane	Kundapura	Udupi	Kamadhare	88
179		13.555411	74.969072				Jyothi	78
180		13.585699	74.957469	Nilachagallu			Shakthi	56
181		13.585726	74.957597				Nagabhatha	68
182		13.578155	74.858998	Haladi			Kanwa	83

183		13.430967	74.736197	ZARS, Brahmavara	Brahmavara	Udupi	MO-4	94
184		13.430942	74.736197				MTU-1001	91
185		13.430932	74.736209				Kempu Jyothi	92
186		13.43093	74.736212				Kaje 25-9	93
187		13.430992	74.735979				MO-4	90
188		13.430923	74.735945				MO-4	89
189		13.430794	74.735882				Narunga	87
190		13.432726	74.735903				KCP-1	96
191		13.432859	74.735693				Kaje Jaya	93
192		13.432723	74.735923				Sahyadri Panchamukhi	95

Table 2. Grain discoloration disease incidence across traditional rice growing ecosystems of Karnataka

Sl. No.	Ecosystem	Average disease incidence (%)
1	Upper Krishna Project (UKP)	33.64
2	Thungabhadra Project ecosystem (TBP)	51.61
3	Hilly ecosystem	57.73
4	Irrigated Bhadra ecosystem	55.81
5	Kaveri ecosystem	74.34
6	Coastal ecosystem	85.11

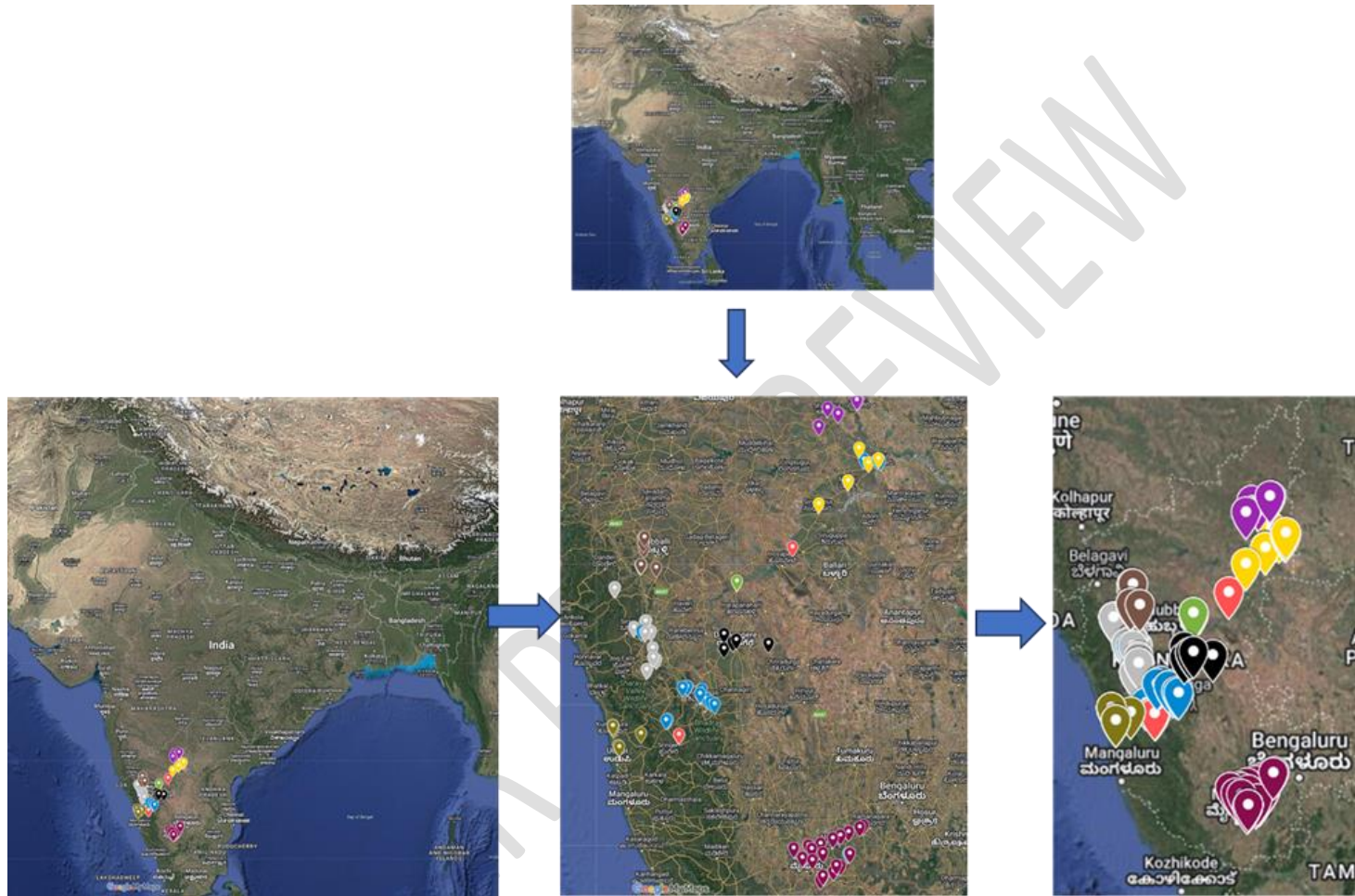


Fig. 2. Map showing the surveyed locations across the rice growing ecosystems of Karnataka state (Coastal, Kaveri, Irrigated Bhadra, Hilly, Thunga Bhadra project (TBP), and Upper Krishna Project (UKP) covering different Districts (individually colour marked).

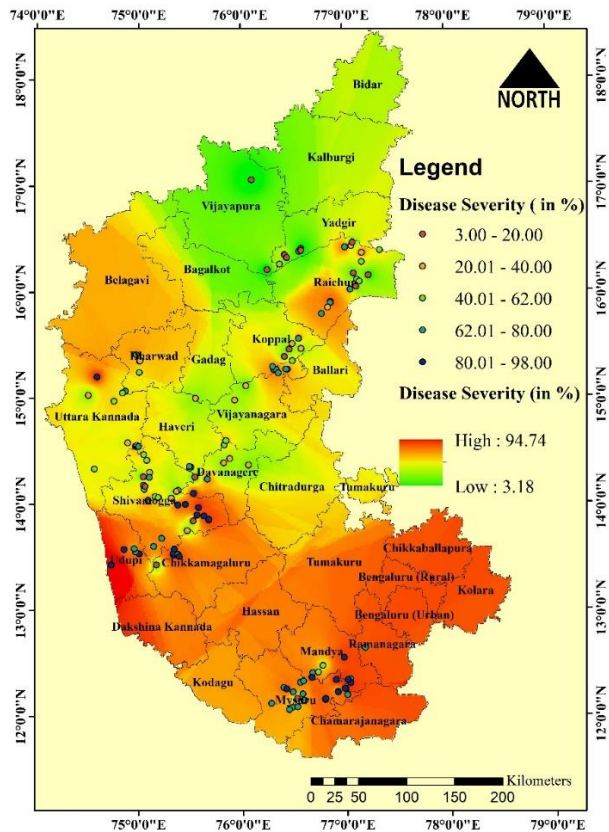


Fig. 3. Spatial distribution map of rice grain discoloration disease severity across paddy-growing Districts of Karnataka. The map shows disease severity (%) ranging from 3.00% to 98.00%, with higher severity observed in southern Districts like Udupi, Shivamogga, and Mysuru, indicated by red and orange areas covering Coastal, Irrigated Bhadra and Kavery ecosystem. Northern Districts such as Yadgir and Raichur representing Krishna River ecosystems show relatively lower severity, marked in green and yellow. The circles represent survey locations, color-coded based on the disease severity observed in each region. The heat map was generated using kernel density estimation in R, highlighting hotspots of disease incidence, with severity levels represented by the color gradient (high in red to low in green).

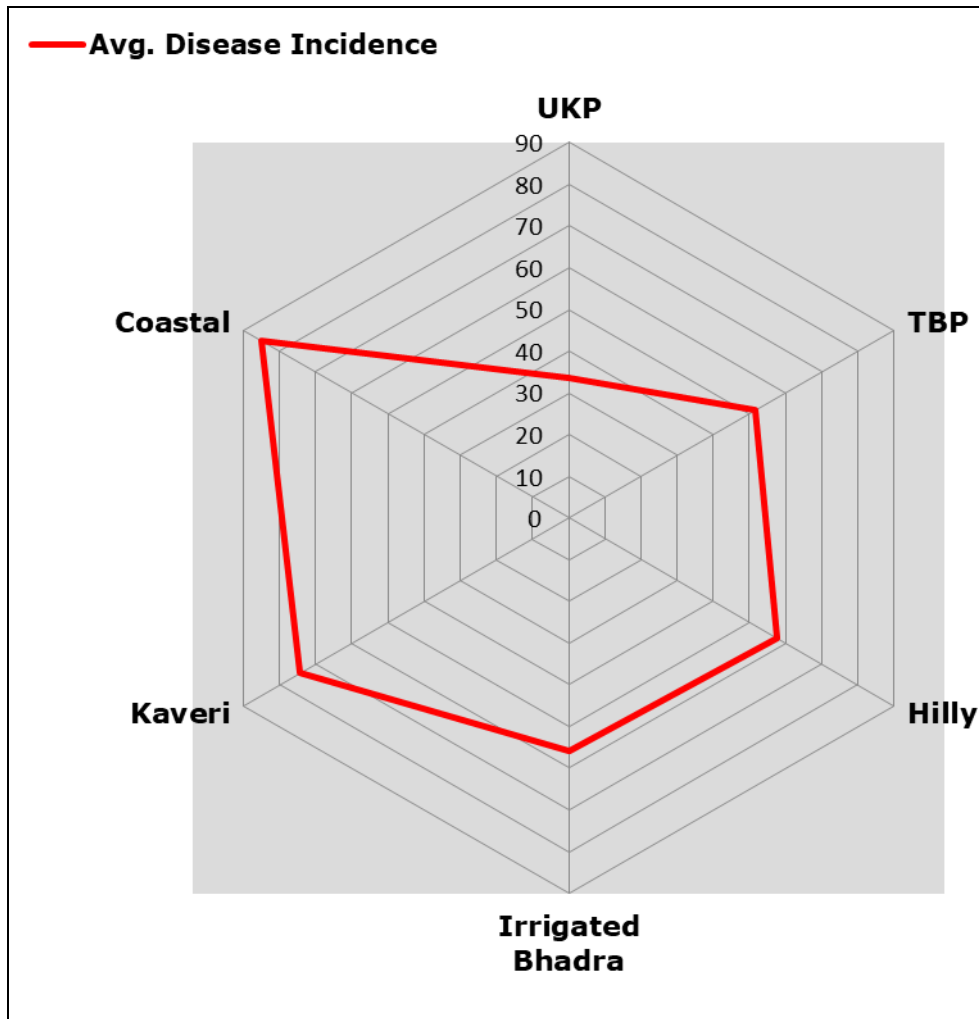


Fig. 4. Image representing the Radar graph displaying the disease incidence of rice grain discoloration across different rice growing ecosystems of Karnataka state. The ecosystems are Coastal, Kaveri, Irrigated Bhadra, Hilly, Thunga Bhadra project (TBP), and Upper Krishna Project (UKP).

Where, red lines highlight the average disease incidence across the surveyed ecosystems.

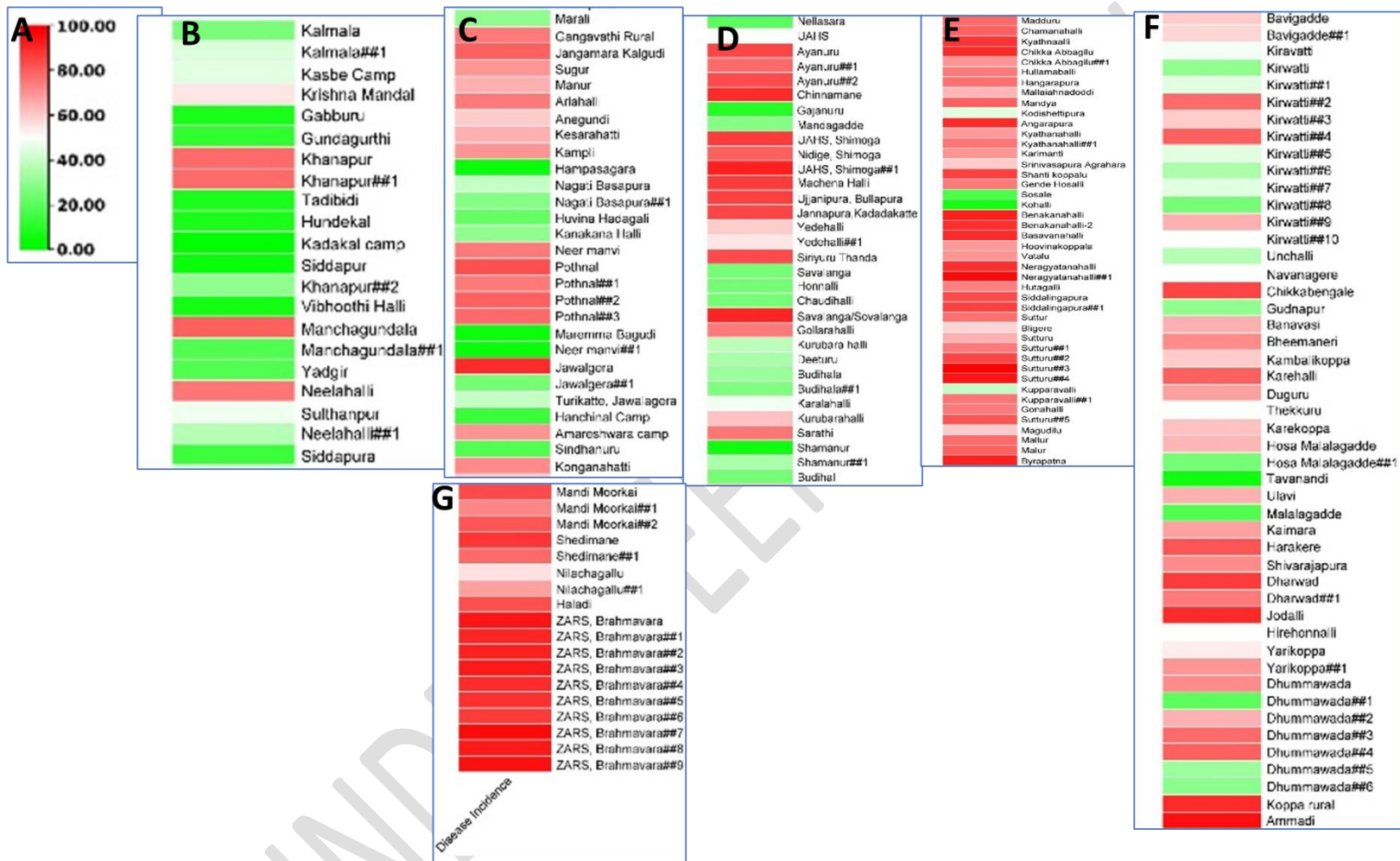


Fig. 5. Heat maps highlight the disease intensity across the surveyed locations from all ecosystems. **A.** Scale of disease severity observed across the surveyed locations, **B.** Disease incidence recorded in UKP ecosystem followed by **C.** TBP, **D.** Irrigated Bhadra **E.** Kavery ecosystem, **F.** Hily ecosystem and **G.** Coastal ecosystem.

UNDER PEER REVIEW