

# STUDY ON THE GREENHOUSE GAS (GHG) EMISSIONS FROM RICE FIELD UNDER VARIOUS NUTRIENT MANAGEMENT PRACTICES

put the names of the authors and coauthors with their respective address

## Abstract

Modernizing traditional farming practices and intensive cultivation on limited land has increased the reliance on fertilizers to maintain soil health. This study, conducted from 2022 to 2023 at the Experimental Farm of ICAR-National Rice Research Institute-Regional Rainfed Lowland Rice Research Station (ICAR-NRRI-RRLRRS) in Gerua, Assam, focused on evaluating the impact of various fertilizer management practices on rice cultivation. The soil of the experimental field was medium in nitrogen (245.4 kg/ha), organic carbon (0.62%) and potassium (195.8 kg/ha) and high in phosphorus (53.8 kg/ha), with adequate zinc content (0.995 ppm) and slightly acidic (pH 5.6) in reaction.

The evaluation covered several parameters, including growth and yield attributes, nutrient uptake, and efficiencies, as well as the environmental impact, particularly greenhouse gas (GHG) emissions.

- **add how many treatments and replications**
- **add data collection and data analysis methods used in your field experiment**
- **make sure you have used the correct experimental design (RBD????)**

The study revealed significant differences in GHG emissions, particularly nitrous oxide (N<sub>2</sub>O) and carbon dioxide (CO<sub>2</sub>), among the different fertilizer management practices. The highest N<sub>2</sub>O emissions were observed in the T<sub>2</sub> treatment {1/3rd RDN (NCU as basal) + 1/3rd RDN (NCU at active tillering) + 1/3rd RDN (NCU at panicle initiation)} at 352 kg CO<sub>2</sub>eha<sup>-1</sup>, while the lowest emissions were recorded in the T<sub>1</sub> treatment (Control – without nitrogen) at 88.4 kgCO<sub>2</sub>eha<sup>-1</sup>. Similarly, CO<sub>2</sub> emissions were also the highest in the T<sub>2</sub> treatment at 1376 kgCO<sub>2</sub>eha<sup>-1</sup>, with the control (T<sub>1</sub>) recording the lowest at 1165 kgCO<sub>2</sub>eha<sup>-1</sup>. Methane (CH<sub>4</sub>) emissions, mainly influenced by water regimes, remained consistent across all treatments, each contributing 2112.3 kgCO<sub>2</sub>eha<sup>-1</sup> due to similar water management across all treatments.

Overall, total GHG emissions were significantly higher in fertilized treatments, with the T<sub>2</sub> treatment exhibiting the highest total emissions of 3841 kgCO<sub>2</sub>eha<sup>-1</sup>, while the control had the lowest at 3366 kgCO<sub>2</sub>eha<sup>-1</sup>. These findings highlight the complex trade-offs between enhancing

rice yields through improved nutrient management and the associated increase in GHG emissions, emphasizing the need for strategies that balance productivity with environmental sustainability.

This study's results contribute valuable insights into the relationship between fertilizer use, particularly nano-urea applications, and GHG emissions in rice cultivation. The findings suggest that while advanced fertilizer management can improve yields and economic returns, it may also exacerbate GHG emissions, necessitating further research to optimize these practices for both environmental and economic benefits.

**Keyword:** Carbon dioxide, GHG emissions, Methane, Nano-urea, Nitrous oxide, Rice cultivation, Yield

## INTRODUCTION

Climate change is a critical environmental challenge of the 21<sup>st</sup> century, with far-reaching consequences for food security, economic stability, and human well-being. The impacts are particularly severe in developing countries like India, where agriculture plays a vital role in sustaining the livelihoods of millions (Llonas and Suwanmaneepong, 2021). Changes in temperature and precipitation directly affect crop yields, threatening food production and overall food security (Chauhan *et al.*, 2014). Rice (*Oryza sativa* L.), a staple food for more than half of the global population, is particularly sensitive to climate change. Traditional rice farming practices are significant sources of greenhouse gas (GHG) emissions, especially methane (CH<sub>4</sub>). Rice cultivation contributes approximately 10% of global methane emissions due to the anaerobic conditions in flooded paddy fields, which favor methane production by methanogenic bacteria (Prasad *et al.*, 2017a).

In modern agriculture use of fertilizer, mainly nitrogen, is essential, particularly for high-yielding crops like rice. Urea, the most commonly used nitrogen fertilizer, is preferred for its high nitrogen content and cost-effectiveness (Masum *et al.*, 2013). However, the application of conventional urea is often inefficient, with significant nitrogen losses occurring through volatilization, leaching, and denitrification. Besides, excessive nutrient use, particularly nitrogen (N), beyond crop requirements, leads to environmental losses and significant greenhouse gas (GHG) emissions, negatively impacting the environment (Gupta *et al.*, 2021). Specifically, rice fields contribute approximately 30% of global agricultural methane (CH<sub>4</sub>) emissions and 11% of nitrous oxide

(N<sub>2</sub>O) emissions (Ramesh *et al.*, 2020). These losses reduce nitrogen use efficiency (NUE) and contribute to environmental issues, including water eutrophication (Zebarth *et al.*, 2009). These inefficiencies highlight the need for more effective fertilization methods, leading to the development of innovative solutions such as nano-urea.

Nano-urea represents a significant advancement in fertilizer technology, developed to address the inefficiencies associated with conventional fertilizers. Nano-urea is characterized by its ultra-small particle size (< 100 nm) which enhances its physical and chemical properties compared to traditional urea. The increased surface area/volume ratio of nano-urea improves nitrogen availability and absorption by plants, reducing nutrient losses and enhancing crop growth (Kumar *et al.*, 2021). The use of nano-urea in agriculture has shown promising results, including improved NUE, reduced environmental pollution, and mitigated GHG emissions. By providing a more controlled and sustained release of nitrogen, nano-urea can potentially minimize volatilization and leaching losses, which are common with traditional urea (Kumar *et al.*, 2021). **Therefore, this research topic is focused to.....**

## MATERIALS AND METHODS

### Study area and treatment details

A two-year study was conducted during two consecutive *kharif* seasons (2022 and 2023) at the experimental farm of ICAR-National Rice Research Institute-Regional Rainfed Lowland Rice Research Station (ICAR-NRRI-RRLRRS) in Gerua, Assam, located at 26.25° N latitude and 91.56° E longitude, in the Lower Brahmaputra Valley Zone, characterized by a humid sub-tropical climate with hot summers and cold winters. A medium-duration rice variety CR Dhan 311 was taken for experimentation and transplanting was done manually keeping 20 cm row distance. The experiment was laid out in a randomized block design, replicating three times with seven treatment combinations, viz., T<sub>1</sub>: Control (No nitrogen), T<sub>2</sub>: 1/3<sup>rd</sup> RDN (NCU as basal) + 1/3<sup>rd</sup> RDN (NCU at active tillering -AT) + 1/3<sup>rd</sup> RDN (NCU at panicle initiation -PI), T<sub>3</sub>: 1/3<sup>rd</sup> RDN (NCU as basal) + 1/3<sup>rd</sup> RDN (NCU at AT) + 2sprays of nano-urea (at maximum tillering -MT and PI) @ 2 ml / litre), T<sub>4</sub>: 1/3<sup>rd</sup> RDN (NCU as basal) + 1/3<sup>rd</sup> RDN (NCU at AT) + 1 spray of nano-urea at PI @ 4 ml / litre), T<sub>5</sub>: 1/4 RDN (NCU as basal) + 1/4 RDN (NCU at AT) +2 sprays of nano-urea (at MT and PI) @ 2 ml / litre), T<sub>6</sub>: 1/3<sup>rd</sup> RDN (NCU as basal) + 2 sprays of nano-urea (at AT & PI) @ 2 ml / litre), and T<sub>7</sub>: 1/3<sup>rd</sup> RDN (NCU as basal) + 3 sprays of nano-urea (at AT, PI, and heading) @ 2 ml / litre). At the time of field preparation, before transplanting, a

uniform dose of 20 kg P<sub>2</sub>O<sub>5</sub> and 40 kg K<sub>2</sub>O/ha were applied through single super phosphate and muriate of potash, respectively, and incorporated in the soil. The soil of the experimental field was medium in nitrogen (245.4 kg/ha), organic carbon (0.62%) and potassium (195.8 kg/ha) and high in phosphorus (53.8 kg/ha), with adequate zinc content (0.995 ppm) and slightly acidic (pH 5.6) in reaction.

The monsoon typically begins in June and lasts until September, with pre-monsoon showers starting in mid-March. Rainfall intensity peaks in August and diminishes from October, reaching its lowest levels in December and January. Weekly meteorological data during the study period were recorded at the Meteorological Observatory of ICAR-NRRI-RRLRRS, Gerua. The total rainfall received during the crop growing period (2 July-31 December) was 397 mm in 2022 and 472 mm in 2023. In the year 2022 mean monthly maximum and minimum temperatures ranged from 22.7°C to 26.1°C and 32.1°C to 35.1°C, respectively. While in 2023, the corresponding maximum and minimum temperature ranges were 13.5°C to 25°C and 36.0°C to 37.5°C. The mean relative humidity in the morning and evening varied from 80.1% to 84.2% and 78% to 82% in 2022, and 87.8% to 92.5% and 58.7% to 82.4% in 2023.

To estimate GHG emissions, the Cool Farm Tool (CFT), a farm-level greenhouse gas (GHG) emissions calculator specifically designed to help farmers measure and reduce their carbon footprint, was used. This involves several steps and incorporates various scientific models and data inputs, including farm information (geographical location, soil type, and crop type) management practices (tillage, fertilizer use, irrigation, and crop rotation), resource use (fuel, electricity, and water are also included), emission factors (specific to the type of input or activity), fertilizer application (has a certain emission factor for N<sub>2</sub>O emissions, which is based on the amount and type of fertilizer used, as well as soil and climate conditions), carbon sequestration (particularly in soil and biomass, which offsets some of the emissions).

The GHG calculation models included Intergovernmental Panel on Climate Change (IPCC) guidelines including (Tier 1, Tier 2, and sometimes Tier 3 approaches, depending on data availability and complexity), biogeochemical models (simulating the cycling of carbon, nitrogen, and other elements in the farm system to estimate GHG emissions), empirical models for certain activities, the tool uses empirical models that are based on field studies and experiments to predict emissions. The tool calculates the total GHG emissions from various sources, including carbon dioxide (CO<sub>2</sub>), methane (CH<sub>4</sub>), and nitrous oxide (N<sub>2</sub>O), provides a breakdown of emissions by

source (e.g., soil management, livestock, fertilizer use) and we can compare their emissions with benchmarks or industry averages to identify areas for improvement. The tool allows users to model different scenarios, such as changes in farming practices, to see how these would impact emissions.

## **Data collection and data analysis methods/techniques.....**

### **RESULTS AND DISCUSSION**

This section presents the results of the greenhouse gas (GHG) emissions measured in terms of nitrous oxide (N<sub>2</sub>O), carbon dioxide (CO<sub>2</sub>), and methane (CH<sub>4</sub>) emissions across different treatment groups. The total GHG emissions are calculated as the sum of these individual gases, expressed in kg CO<sub>2</sub> equivalents per hectare (kgCO<sub>2</sub>eha<sup>-1</sup>). The data provides insights into the effectiveness of different treatments in reducing GHG emissions from rice fields.

#### **Nitrous Oxide (N<sub>2</sub>O) Emissions**

Nitrous oxide is a potent greenhouse gas with a global warming potential approximately 298 times greater than CO<sub>2</sub> over a 100-year period. The treatments showed significant variations in N<sub>2</sub>O emissions, T<sub>2</sub> exhibiting the highest N<sub>2</sub>O emissions at 352 kgCO<sub>2</sub>eha<sup>-1</sup>, was the least efficient nitrogen management, leading to increased losses through denitrification. T<sub>1</sub> recorded the lowest N<sub>2</sub>O emissions at 88.4 kgCO<sub>2</sub>eha<sup>-1</sup>, indicating more effective nitrogen use, likely due to optimized application rates or controlled release mechanisms. T<sub>3</sub>, T<sub>4</sub>, T<sub>5</sub>, T<sub>6</sub>, and T<sub>7</sub> demonstrated moderate N<sub>2</sub>O emissions, with values ranging from 177 to 264 kgCO<sub>2</sub>eha<sup>-1</sup>. These treatments appear to have similar efficiencies in nitrogen management, although they performed better than T<sub>2</sub>.

#### **Carbon Dioxide (CO<sub>2</sub>) Emissions**

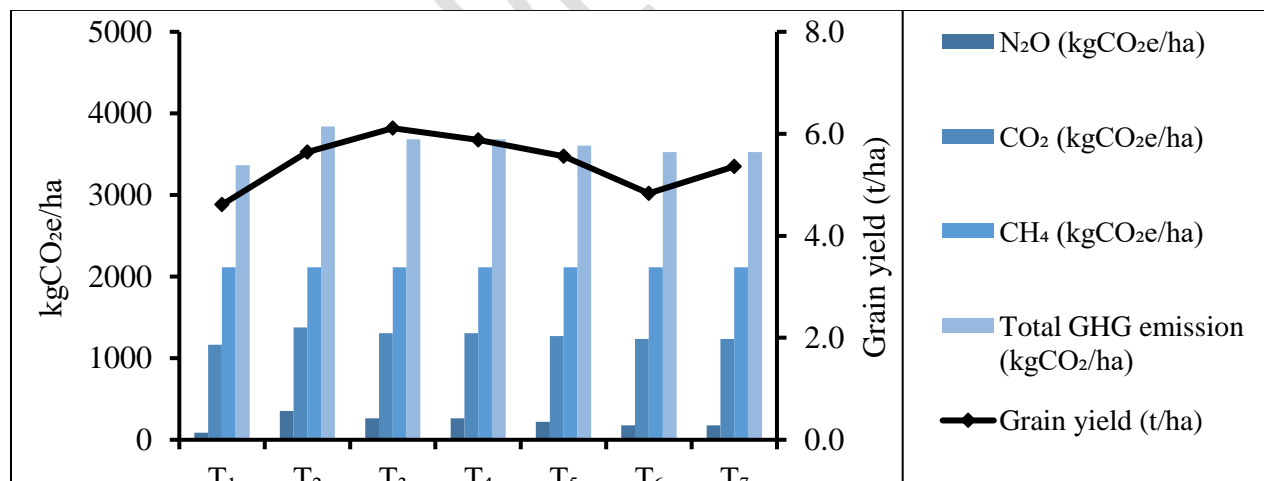
Carbon dioxide emissions are a direct result of soil respiration and other biological activities. T<sub>2</sub> had the highest CO<sub>2</sub> emissions at 1376 kgCO<sub>2</sub>eha<sup>-1</sup>, indicating that this treatment may have stimulated microbial activity or accelerated organic matter decomposition, leading to higher CO<sub>2</sub> flux. T<sub>1</sub> recorded the lowest CO<sub>2</sub> emissions at 1165 kgCO<sub>2</sub>eha<sup>-1</sup>, suggesting a less intensive biological activity or more stable soil organic carbon content under this treatment. The treatments T<sub>3</sub>, T<sub>4</sub>, T<sub>5</sub>, T<sub>6</sub>, and T<sub>7</sub> exhibited CO<sub>2</sub> emissions between 1236 and 1306 kgCO<sub>2</sub>eha<sup>-1</sup>, reflecting a relatively uniform impact on soil CO<sub>2</sub> production across these treatments, with a slight variation depending on the specific management practices employed.

## Methane (CH<sub>4</sub>) Emissions

Methane emissions are primarily produced under anaerobic conditions in flooded rice paddies. All treatments exhibited identical CH<sub>4</sub> emissions of 2112 kgCO<sub>2</sub>eha<sup>-1</sup>, suggesting that the treatments did not significantly alter the anaerobic conditions in the soil or the methanogenic microbial activity responsible for CH<sub>4</sub> production. Therefore, methane production was likely governed by the inherent characteristics of the rice paddies, such as water management and organic matter content, rather than the specific treatments.

## Total Greenhouse Gas Emissions

The total GHG emissions combine the contributions from N<sub>2</sub>O, CO<sub>2</sub>, and CH<sub>4</sub> to provide an overall assessment of each treatment's environmental impact. The treatment T<sub>2</sub> had the highest total GHG emissions at 3841 kgCO<sub>2</sub>eha<sup>-1</sup>, indicating it as the least environmentally friendly treatment, with high emissions from both N<sub>2</sub>O and CO<sub>2</sub>. T<sub>1</sub> produced the lowest total GHG emissions at 3366 kg CO<sub>2</sub>eha<sup>-1</sup>, making it the most sustainable option in terms of minimizing overall GHG output. The treatment T<sub>3</sub>, T<sub>4</sub>, T<sub>5</sub>, T<sub>6</sub>, and T<sub>7</sub> showed intermediate total GHG emissions, ranging from 3525 to 3682 kgCO<sub>2</sub>eha<sup>-1</sup>. Among these, T<sub>6</sub> and T<sub>7</sub> were particularly effective, achieving lower total emissions compared to the others, indicating more efficient nitrogen use and reduced CO<sub>2</sub> output.

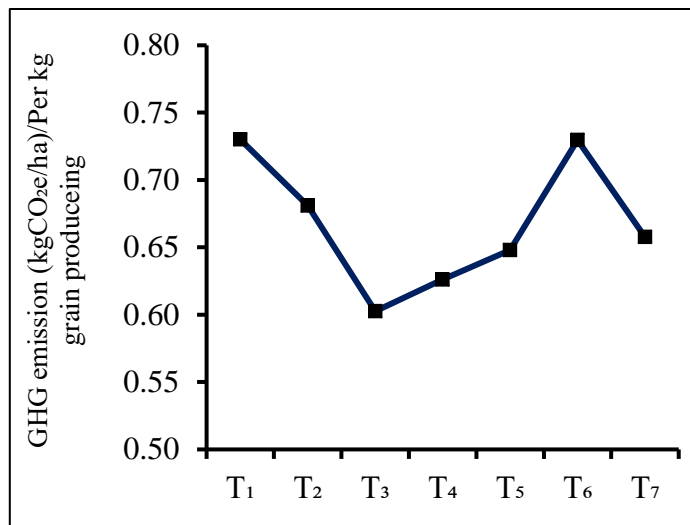


**Fig 1:** Effect of fertilizer management practices on N<sub>2</sub>O, CO<sub>2</sub>, CH<sub>4</sub>, and total GHG emissions (kg CO<sub>2</sub>eha<sup>-1</sup>) in transplanted *kharif* rice

The highest total GHG emission was observed in T<sub>2</sub> (3841 kgCO<sub>2</sub>eha<sup>-1</sup>), while T<sub>1</sub> recorded the lowest emissions (3366 kgCO<sub>2</sub>eha<sup>-1</sup>). The variation in total emissions is primarily influenced by differences in N<sub>2</sub>O and CO<sub>2</sub> emissions, as CH<sub>4</sub> emissions remain constant across all treatments.

T<sub>3</sub> achieved the highest grain yield (6.11 t/ha), closely followed by T<sub>4</sub> (5.88 t/ha). T<sub>1</sub> recorded the lowest grain yield (4.61 t/ha).

The efficiency of GHG emissions per kg of grain produced was the highest in T<sub>3</sub> (0.60 kgCO<sub>2</sub>eha<sup>-1</sup> per kg grain) and the lowest in both T<sub>1</sub> and T<sub>6</sub> (0.73 kgCO<sub>2</sub>eha<sup>-1</sup> per kg grain). This indicates that T<sub>3</sub>, despite having relatively high total emissions, is more efficient in terms of emissions per unit of grain produced.



**Fig 2 : Graphical presentation showing GHG emission rate**

### CONCLUSION

The two-year study reveals that T<sub>3</sub> (application of 2/3 of recommended dose of nitrogen through NCU, 1/3 each at transplanting (basal) and active tillering followed by two nano-urea sprays (2ml/litre) at maximum tillering and PI) is recommended as the most efficient option for farmers seeking to maximize grain yield while minimizing GHG emissions per unit of grain produced. This treatment achieves the highest grain yield (6.11 t/ha) with the lowest per kg grain GHG emission (0.60 kgCO<sub>2</sub>eha<sup>-1</sup>) per kg of grain producing, making it the most sustainable choice in terms of productivity and environmental impact. Farmers aiming to balance yield with environmental sustainability should consider adopting practices similar to those in T<sub>3</sub>. While T<sub>2</sub> (application of recommended dose of N (60 kg N/ha) in three equal instalments – at transplanting (basal), active tillering, and PI through NCU) also provides high yield and relatively low GHG

emission per kg grain, and its higher total GHG emissions make it less favorable than T<sub>3</sub>. Conversely, although T<sub>1</sub> (Control – without nitrogen) has the lowest total GHG emissions, its lower grain yield and higher GHG emissions per kg of grain produced indicate it may not be as efficient for maximizing both productivity and sustainability. Therefore, it is recommended to focus on optimizing practices that align with T<sub>3</sub> to achieve the best balance between high yield and low environmental impact.

## REFERENCES

- [1] Adhikari R, Subedi R, Tripathi J K, Pandey SP, Ranjan S (2020). Nano-fertilizers for balanced crop nutrition: A review. *Journal of Nanotechnology in Agriculture and Food*, 18(4), 341-355.
- [2] Zebarth BJ, Drury CF, Tremblay N, Cambouris AN (2009). Opportunities for improved fertilizer nitrogen management in production of arable crops in eastern Canada: A review. *Canadian Journal of Soil Science*, 89, 113-132.
- [3] Chen D, Li Y, Zhang H, et al. (2020), Assessing the impacts of nitrogen application rates on yield and nitrogen use efficiency of summer maize under a drip irrigation system. *PLoS One*, 15(1): e0228040. doi: 10.1371/journal.pone.0228040
- [4] Gong F, Liang Y, Wu X, et al. (2020). Nano-urea fertilizer reduced nitrogen leaching and improved nitrogen use efficiency in a wheat-maize rotation system. *Sci. Rep.*, 10(1):18775. doi:10.1038/s41598-020-75694-2
- [5] Gupta K, Kumar R, Baruah KK, Hazarika S, Karmakar S, Bordoloi N (2021). Greenhouse gas emission from rice fields: A review from Indian context. *Environ. Sci. Pollut. Res.*, 28, 30551–30572
- [6] Kumar R, Ritesh Kumar Singh, Annusuiya Panda and Sanjay Kumar Singh (2021). Nano Urea: An Efficient Tool for Precision Agriculture and Sustainability, *Vigyan Varta An International E-Magazine for Science Enthusiasts* E-ISSN: 2582-9467 Popular Article.
- [7] Kumar Y, Tiwari, KN, Singh T and Raliya R (2021). Nano fertilizers and their role in sustainable agriculture. *Annals of Plant and Soil Research*, 23, 238-255

- [8] Li H, Yu P, Li Y, et al. (2018). Nanotechnology-mediated immunoassays for pesticide residues: state of the art and future prospects. *Trends Anal Chem.*,103:1-12. doi: 10.1016/j.trac.2018.03.021
- [9] Liu X, Zhang Y, Han W, Tang A, Shen J, Cui Z (2013). Enhanced nitrogen deposition over China. *Nature*, 494(7438),459-462. doi:10.1038/nature11917
- [10] Llonas C and Suwanmaneepong S (2021). Influence of perceived risks in farmer's decision towards sustainable farm practices. *International Journal of Agricultural Technology*, 17, 2143-2154.
- [11] Chauhan N, Chauhan RP, Joshi M, Agarwal TK, Aggarwal P, Sahoo BK (2014). Study of indoor radon distribution using measurements and CFD modeling. *Journal of Environmental Radioactivity*, 136, 105-111
- [12] Prasad R, Bhattacharyya A, Nguyen QD (2017), Nanotechnology in sustainable agriculture: Recent developments, challenges, and perspectives. *Front. Microbiol.*, 8, 1014.
- [13] Prasad R, Kumar V, Prasad KS (2014). Nanotechnology in sustainable agriculture: present concerns and future aspects. *Afr. J. Biotechnol.*, 13(6), 705–713
- [14] Ramesh T and Selvaraj R (2020). Evaluation of rice cultivation systems for greenhouse gases emission and productivity. *Int. J. Ecol. Environ. Sci.*, 2, 49–54.
- [15] Masum SM, Malek M, Mandal SH, Haque MN and Akther Z (2013). Influence of plant extracted pyroligneous acid on transplanted aman rice. *Bangladesh Journal of Experimental Bioscience*, 4, 31-34.
- [16] Yan X, Jin D, Liu J, et al. (2018). High nitrogen use efficiency by application of slow-release urea with reduced nitrification inhibitor in intensive wheat-maize systems in North China Plain. *Field Crop Res.*, 228, 34-43. doi: 10.1016/j.fcr.2018.08.001