

Original Research Article

Household level determinants of wheat packages adoption in Tigray Region, Northern Ethiopia

Abstract

Wheat has been considered as one of the strategic food security crops in Ethiopia. A number of research efforts have been done by different research institutions to improve the production and productivity of the crop and as a result a number of wheat production packages has been released and promoted all across the country, including Tigray. Yet, in Tigray, there is no adequate evidence on the adoption status of wheat packages and their determinant factors. Hence, this adoption study was initiated with the objective to analyze the status of wheat packages adoption, and determinant factors for further adoption. A multistage sampling technique was employed to select 493 households from five wheat growing districts of the region. Data were collected through the administration of semi-structured questionnaires and analyzed using both descriptive statistics and Multivariate Probit (MVP) model. The descriptive results described that, the average wheat packages adoption status was 67%, of these only 17% of farmers adopted all five packages. The result of MVP model revealed that sex, age, livestock size, extension services, average plot distance, off-farm income source, farmer perception on his status and credit access were the determinant factors which facilitate/and/or hinder wheat packages adoption in Tigray. Thus, the policy and development interventions should focus on improving institutional support and wealth creation opportunities to improve production and productivity of wheat producer farmers in Tigray.

Keywords: Adoption index, Multivariate Probit, Wheat packages,

1. Introduction

The government of Ethiopia has been promoting a package-driven extension that combines credit, fertilizers, improved seeds, and better management practices (1); and herbicides and conservation practices are among the contents of the packages on wheat commodity (2). Wheat is the fourth largest cereal crop produced by close to 5 million smallholder farmers in Ethiopia (3). Considering wheat as food security crop in the country in general, and Tigray in particular, a number of improved wheat varieties, and production packages has been released at national and regional level. However, despite of the efforts made to promote and introduce the improved technologies related to wheat by governmental and non-governmental organizations at different levels yet sustainable and essential technology adoption is not realized in the region. Consequently, the productivity of wheat in Tigray has remained very low, with an average of 2.1 t/ha, which is lower than the national average 3.04 t/ha under smallholder farmers (3).

Worldwide including Ethiopia, many investigations confirmed that agricultural technology adoption can contribute to improve productivity and raising income of farm households (4-9). Specifically, adoption of improved wheat varieties (6:8-10), able to increase production and to improve the household' farm income. Adoption of row planting on wheat help to increase wheat crop yields 50 to 80% and decrease amount seed rate (11-13). Adoption of inorganic fertilizer at recommended rate and applied at the critical time could increase productivity of the crop. Without utilization of fertilizer, world food production could be reduced from 40-60% annually (4). Pesticides are also chemicals that are used to improve agricultural outputs by protecting against crop damages (14). Increased herbicide use promotes efficient fertilizer use, which leads to an increase in production (1; 5). Furthermore, a recent finding confirmed that, the adoption of a combined fertilizer and improved seed provides higher productivity than the adoption of single technologies (15).

On contrary, many empirical evidences were documented related to adoption of improved agricultural technologies in Ethiopia in general and Tigray in particular, but the adoption studies were mainly focused on one package/single technology/adoption study at a time. Even though, there are very few exceptions, like (16; 17), which considered the issues of simultaneity and sequences of technological options in their study. Practically the adoption decision involves choices among several technological options (simultaneity of choices) and interdependent

decisions (e.g. the decision to use improved variety, row planting, inorganic fertilizer, chemicals and moisture conservation practices etc). Moreover, previous studies on adoption of wheat packages/technologies did not identify the determining factors for each package at the same time. Furthermore, if there are studies they mainly focused at district level and zonal level with low coverage.

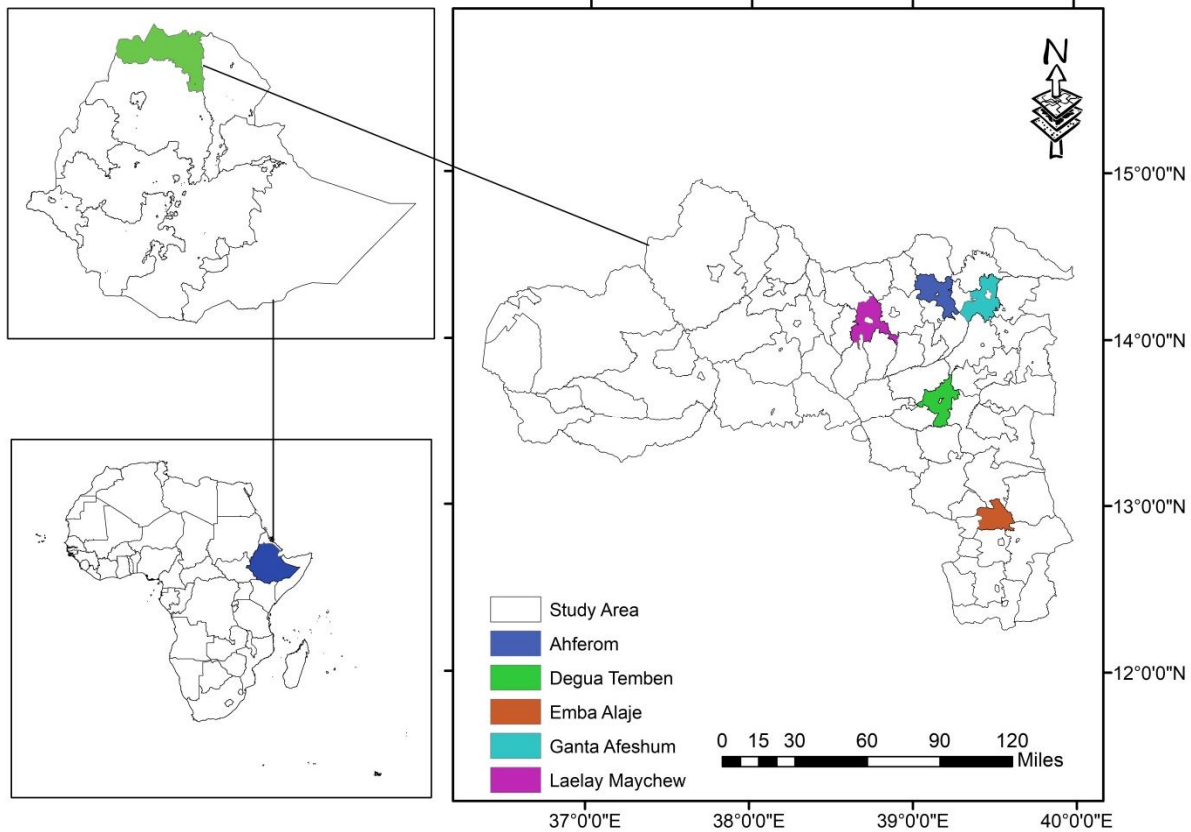
Hence, the initiation of this study was to know the adoption status and its determinants of the wheat in packages in the wheat growing area of Tigray. In this way, the findings will contribute to improve the wheat research interventions, and design better adoption programs so as to increase production and productivity of wheat at regional and national level in Ethiopia and beyond.

UNDER PEER REVIEW

2 Research methodology

2.1 Description of the Study areas

The study was conducted in Tigray National Regional State of Ethiopia. The region is located between 12° - 15° north latitude and $36^{\circ}30'$ - $40^{\circ}30'$ east longitude. The region has an area of 54,593 square kilometers(18). It shares boundaries with Amhara and Afar regions, and with countries Eritrea and Sudan. In Tigray, a mixed farming production system is practiced, that comprises crop production and livestock rearing. The study mainly covers four wheat growing zones of Tigray (See Map).



Map 1: Map of the study areas

2.2 Sample size and sampling procedure

A multi-stage sampling technique was employed to select respondents for the study. First, the target districts were clustered according to their potential for wheat production. The cluster includes North western, Central, Eastern, South Eastern and Southern zones to embrace representativeness of commodity and agro-ecologies in each zones of the region. Secondly, LaelayMaychew, Ahferom, and Ganta Afeshum districts were selected from the mid land agro-ecologies; while the remaining DeguaTemben and Alaje districts were also selected from highland agro-ecologies of the region purposively. From the selected five districts, three kebeles from each were selected. Finally, from 15 kebelles, a total of 493 respondents were included in the study using simple random sampling from the prepared wheat growing farmers list in the kebele.

2.3 Data sources and data analysis method

The study used both primary and secondary data sources. The primary data sources were collected through interview method (using semi-structured questionnaire) from Farmers. The secondary data sources were also collected from published journals and unpublished sources. To analyze and present the data the study was employed both descriptive and econometric models. The descriptive statistics includes mean, frequency, ranking and percentage for; describing and presenting the extension services and adoption status of wheat packages. In addition, multivariate probit econometrics model was used to identify the determinant factors for wheat packages adoption.

A multivariate probit model

In a single-equation statistical model, information on a farmer's adoption of one wheat package does not alter the likelihood of his adopting of other packages. However, the MVP approach simultaneously models the influence of the set of explanatory variables on each of the different practices, while allowing for the potential correlation between unobserved disturbances, as well as the relationship between the adoptions of different practices (19). One source of correlation may be complementarities (positive correlation) and substitutabilities (negative correlation) between different practices (Ibid). Failure to capture unobserved factors and interrelationships

among adoption decisions regarding different practices will lead to bias and inefficient estimates (20).

Multivariate probit model is appropriate for jointly predicting two or more choices of an individual. In this analysis, farmers have a choice to select one and or more than one/not select one and or more than one from list of wheat packages. Currently, for Modeling farmers' adoption decisions of multiple crop technologies (16); to analyzed the determinants of the adoption of interrelated sustainable agricultural practices (21); to study the recommended agronomic practices adoption among wheat producer farmers (22); and Geda *et al*(17) Determinants of adoption of climate smart agricultural technologies in wheat production were among the authors used multivariate probit model. The justification for their reasons were particular technologies is not independent of other technological selections-on the same farm plot of land. Hence, using multivariate probit model for this adoption study becomes reasonable. The definition and description of all the dependent and independent variables is summarized below (Table 1).

Table 1. Definition of variables included in the model

| Variables | Description | Value |
|---|---|--|
| Dependent variables | | |
| Improved variety | Used improved wheat varieties | 1=yes, 0=no |
| Row planting | Used row planting on wheat production | 1=yes, 0=no |
| Fertilizer | Used fertilizer on what production | 1=yes, 0=no |
| Pesticides/insecticide /herbicides/chemicals | Used pesticides/chemical on wheat production | 1=yes, 0=no |
| Moisture conservation practices | Used moisture conservation practices on wheat production | 1=yes, 0=no |
| Independent variables | | |
| SEXHH | Sex of the household head | 1=male, 0=female |
| AGEHH | Age of the household head | Number |
| EDULEVEL | Educational level of the household head | 1= literate, 0= illiterate |
| FAMISIZE | Family size measured in man equivalent | Number |
| LANDSIZE | Land holding size of the household in (hectare) | Number |
| LIVESTOCK | Total livestock holding in Tropical Livestock Unit (TLU) | Number |
| ATTITUDE | The perception of the household head towards his status perceived as model | Not model=0 Semi model=1 Model=2 |
| EXTENSION | Extension services index | Number in index |
| CREDITACC | Households access to credit | 1=yes, 0= no |
| OFF-FARM | Household participation in off farm activities | 1=yes, 0= no |
| AVERGE PLOT | Average Farm plot distance from household residence /in minutes/ | Number |

3 Results and discussion

3.1 Characteristics of the sample households

As indicated in Table 2, the proportion of female headed households in this study was found 14.8%. The highest percentage of female headed households was found at Alaje district whereas the lowest percentage was found at Ahforem district. The educational level of the majority household heads(63%) was literate, while the remaining are illiterate. The majority 61.7% of the respondents were not participated in off/non-farm income activities, whereas remaining 38.3% of the respondents were participated in off/non-farm income activities. Regarding to the participation in off/non-farm activities; the highest percentage of households, (50%) was in LaelayMaychew district, whereas the lowest percentage (31.4%)was found at Ganta Afeshum district. The majority (83%) of respondents had access to credit services during 2018 production season. The status of the households towards technology adoption low, which accounts 26.6% perceived as model and the remaining 49.5 and 23.9% respectively, was semi model and not model(Table 2).The descriptive analysis showed that, the mean age of sampled respondents was 46.97 years. This implies that the mean age of the respondents was at productive age. The average household size in man equivalent was 2.94 whereas; the average livestock holding was 3.77 TLU. The average landholding size of the respondents was about 0.77 hectare per household head. The land holding size of the respondents ranges from landless to 3.25 hectare owner (Table 2). The average plots distance of the households from their residence was about 34.8 minute walking on foot (Table 2).

Table: 2. Household characteristics of the sample households

| Variables | Description | LaelayMaychew | Ahferom | Ganta Afeshum | DeguaTemben | Alaje | Total | χ^2 -value |
|--|----------------|---------------|----------|---------------|-------------|----------|-----------|-----------------|
| | | N (%) | N (%) | N (%) | N (%) | N (%) | N (%) | |
| Sex of household head | Male | 81(86.2) | 80(93) | 83(79) | 97(90.7) | 79(78.2) | 420(85.2) | 13.82*** |
| | Female | 13(13.8) | 6(7) | 22(21) | 10(9.3) | 22(21.8) | 73(14.8) | |
| Educational level of household head | Illiterate | 22(23.4) | 26(30.2) | 42(40) | 45(42.1) | 43(42.6) | 178(36.1) | 12.02** |
| | Literate | 72(76.6) | 60(69.8) | 63(60) | 62(57.9) | 58(57.4) | 315(63.9) | |
| Off-farm income sources | Yes | 47(50) | 36(41.9) | 33(31.4) | 38(35.5) | 35(34.7) | 198(38.3) | 8.92* |
| | No | 47(50) | 50(58.1) | 72(68.6) | 69(64.5) | 66(65.3) | 304(61.7) | |
| Access to credit services | Yes | 58(61.7) | 63(73.3) | 104(99) | 98(98) | 87(86.1) | 410(83.2) | 61.95*** |
| | No | 36(38) | 23(26.7) | 1(1) | 9(9) | 14(13.9) | 83(16.8) | |
| Perceived as model/attitude towards his status | Not model | 16(17) | 9(10.5) | 46(43.8) | 33(30.8) | 14(13.9) | 118(23.9) | 54.74*** |
| | Semi model | 41(43.6) | 47(54.7) | 42(40) | 58(54.2) | 56(55.4) | 244(49.5) | |
| | Model | 37(39.4) | 30(34.9) | 17(16.2) | 16(15) | 31(30.7) | 131(26.6) | |
| Summary of the descriptive statistics of continuous variables | | | | | | | | |
| Variables | Unit | N | Mini | Max | Mean | Sd | | |
| Age of the household head | Years | 493 | 21 | 80 | 46.97 | 12.11 | | |
| Family size | Man equivalent | 493 | 0.4 | 9.30 | 2.94 | 1.29 | | |
| Livestock holding | TLU | 427 | 0.01 | 16.93 | 3.77 | 2.42 | | |
| Average distance of plots from residence | Minute | 448 | 0.15 | 240 | 34.82 | 31.81 | | |
| Cultivable land size | Hectare | 493 | 0 | 3.25 | 0.772 | 0.514 | | |
| Extension services | Index | 493 | 0 | 1 | 0.39 | 0.31 | | |
| Wheat packages adoption | Index | 493 | 0 | 1 | 0.67 | 0.26 | | |

NB: Wheat packages adoption index: It is the summation of the five packages/practices divided to five. The packages are using improved seed, inorganic fertilizer, row planting, pesticides use, and moisture conservation practices on wheat production (yes or no).

Extension services index: It is the summation of the six services divided to six. The services are; demonstration, experience sharing, technical support, participation on field days, participation in training and information on market, pest and disease control (yes or no).

3.3 Status of wheat packages adoption and associated problems in Tigray

The adoption of wheat packages in the wheat growing areas of Tigray is low. As indicated in Table 2, the average wheat packages adoption was 67% in the consecutive three years (Table 2 and 3). The majority 401(81.3%) of the respondents used four and above wheat production packages, at the same time a small number of the households (5.9%) did not adopt any package in their wheat production activities (Fig 1). More specifically as presented in the table below, the highest proportion of farmers (92.3%) participated on artificial fertilizer application while the remaining less than 40% of the farmers participated on wheat row planting package (Table 3).

Table 3: Status of households wheat packages adoption in the last three years (N=493)

| Packages participated | Yes | % | No | % |
|--|------------|----------|-----------|----------|
| Improved seed | 422 | 85.6 | 71 | 14.4 |
| Row planting | 189 | 38.3 | 304 | 61.7 |
| Artificial fertilizer | 455 | 92.3 | 38 | 7.7 |
| Chemicals application | 221 | 44.8 | 272 | 55.2 |
| Moister conservation practices | 363 | 73.6 | 130 | 26.4 |
| At least participated in one out of the five | 464 | 94.21 | 29 | 5.89 |

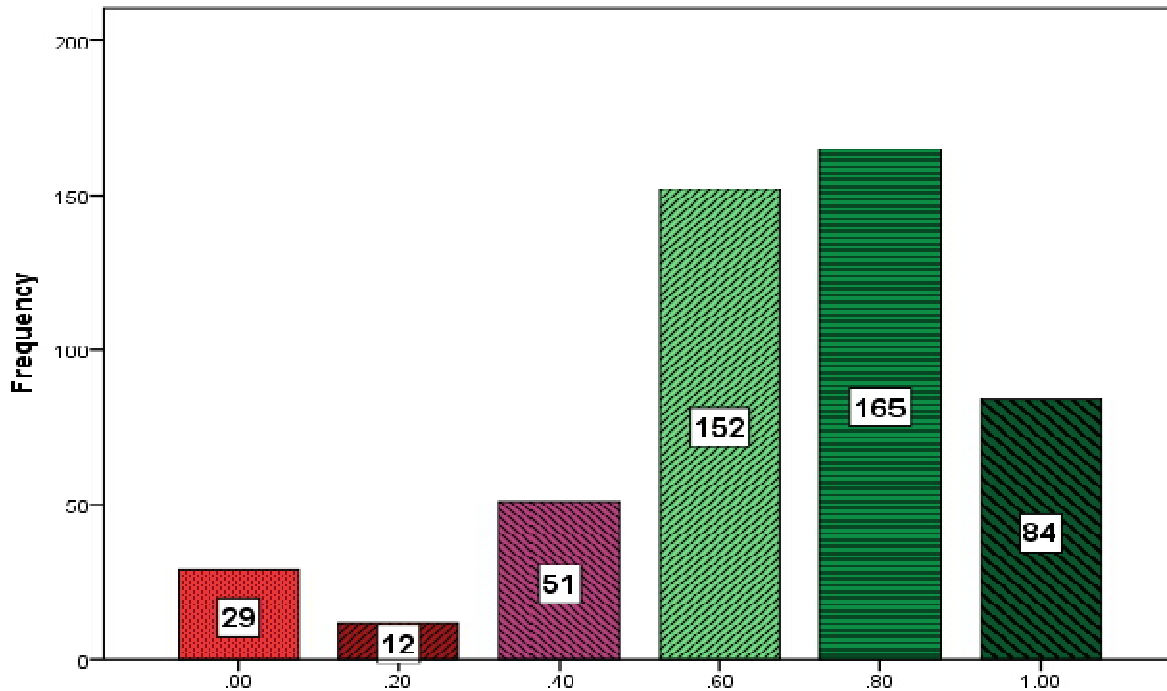


Fig 1: Adoption index of wheat packages in Tigray

3.5 Constraints associated to the wheat packages adoption

Wheat is one of the major commodities in the selected districts for this study. Hence, the extension agents and respective stakeholders are expected to carry out every component of the wheat packages for continuous adoption. However, as summarized in Table 6, farmers still have mentioned their own reasons which hinder the continuous adoption for each package. Lack of knowledge on use and application of the inputs, financial constraint to acquire the improved varieties and on time availability of the improved varieties were among the main reasons reported by farmers for using improved seed. Consistent to this study, lack of seed supply and inaccessible on time, lack of knowledge/information about the varieties, unaffordability of its price were the constraints on adopting improved sorghum varieties (23). Besides, shortage of labor, lack of knowledge on use and application of the practice, and fear of risk on the practice implementation are among the main reasons for adoption of wheat row planting. Consistent to this study, previous findings reported that working labor and lack of awareness regarding to the benefits of row planting were among the main challenges on adopting row planting (12; 23). On the other side, high cost, unavailability on required time and shortage of supply are among the main constraint on fertilizer utilization. Similar to this study, previous findings reported that unaffordability and accessibility on the required time were the main reasons for not using the

inorganic fertilizers (23; 24). Moreover, unavailability, high cost and fear to damages for animals are also among the main reasons on pesticide application on wheat (Table 4).

Table 4: Constraints for wheat packages adoption

| Reasons for not using seed | N | Rank |
|--|-----|-----------------|
| Lack of knowledge on use and application of the input | 30 | 1 st |
| Financial constraint to acquire the seed | 15 | 2 nd |
| Seed was not available on time | 14 | 3 rd |
| The production was unsatisfactory | 13 | 4 th |
| The price is expensive | 7 | 5 th |
| Reasons for not using row planting | N | Rank |
| Lack of knowledge on use and application of the practice | 86 | 1 st |
| Shortage of labor to perform the necessary agricultural activities | 85 | 2 nd |
| Fear of risk to implement the practice | 32 | 3 rd |
| Not better than the existing practices | 12 | 4 th |
| Lack of knowledge and shortage of labor | 11 | 5 th |
| Reasons for not using fertilizer | N | Rank |
| High cost/too expensive/ | 308 | 1 st |
| Unavailability on required time | 32 | 2 nd |
| Shortage of supply | 28 | 3 rd |
| High cost and unavailability on required time | 22 | 4 th |
| Absence of credit facilities | 18 | 5 th |
| Reason for not using pesticides | N | Rank |
| Not available | 59 | 1 st |
| Too expensive | 52 | 2 nd |
| Causes damage on Livestock and other lives | 32 | 3 rd |
| Too expensive and not available | 14 | 4 th |
| Cash shortage/not credit access | 13 | 5 th |

3.6 Determinants of wheat packages adoption in Tigray

As indicated in the Multivariate probit model output (Table 6), the chi-square is ($\chi^2(10) = 136.516$, Prob > $\chi^2 = 0.000$). This shows that variables included in the model are well explaining the adoption decision of wheat packages at less than 1% probability level. This implies that the joint null hypothesis of coefficients of all explanatory variables included in the model were zero should be rejected. Likelihood ratio test of $\rho_{21} = \rho_{31} = \rho_{41} = \rho_{51} = \rho_{32} = \rho_{42} = \rho_{52} = \rho_{43} = \rho_{53} = \rho_{54} = 0$: this implies null hypothesis (H_0), that is, there is no correlation for each equations error terms. The alternative hypothesis (H_A): there is correlation for each equations error terms. Except ρ_{32} (fertilizer and row planting), all the nine ρ were significant at 1 and 5% levels of significance. Hence, we reject the H_0 and accept the H_A , meaning there is error terms correlation among each equation which implies the acceptance of the model. The interaction between households' decision of choices in Table 5, ρ_{21} ; ρ_{31} ; ρ_{41} ; ρ_{51} ; ρ_{42} ; ρ_{52} ; ρ_{43} ; ρ_{53} and ρ_{54} is positive and significant. This implies the households' decision to adopt one ρ does not change the decision to adopt another ρ and the reverse is true. Moreover, this positive interaction will have a positive effect on activities done to promote improved seed, row planting, fertilizer application, conservation practices and chemical application for wheat meaning they will take place at the same time by respondents. Hence, out of the eleven explanatory variable included in the Multivariate probit model eight variable were found the significance factors which determines the adoption of wheat packages (Table 6).

Sex of household head (SEXHH): Sex of household head has a positive influence on adoption of pesticides application for wheat production at 10% significance level. The model revealed that the probability of adopting pesticides on wheat increased by 35.8% as the sex of household head being male. This implies that the male headed households can simply applied pesticides than female headed on which spraying of pesticides need technical capabilities and protective measures, and then male headed households are more motivated to apply the pesticides. This result is consistent with the following authors, which were reported that sex of the household heads had a positive influence on pesticides use (25); on the intensity of wheat package adoption (26); on improved seeds, herbicides and row planting packages adoption for teff production (27).

Age of the household head (AGEHH): The variable is measured in years, and it has positive contribution for fertilizer and moisture conservation practices adoption for wheat at 1% and 10%

probability level, respectively. This implies that as age of the household head increases by one year, adoption of chemical fertilizer increased by 2.4%, keeping others variables constant. Increasing age means there is high probability of learning from life experience and observes the importance of fertilizer application on wheat production practically. This result is consistent with the study of (28; 29). Similarly, the model shows that as age of the household increased by one year the probability of adopting moisture conservation practices increased by 1.2%, keeping other variables constant. This implies that the aged households have the probability to see the importance of conservation practices for wheat production than the younger once. The study is consistent with (30; 31), which were reported that aged farmers have adequate knowhow their farming and solutions and, motivated to adopt the practices in their plot.

Off-farm income sources (Off-FARM): Engaging in various off/non-farm incomes activities has shown a negative contribution for adoption of improved wheat varieties at 1% probability level. The model revealed that the probability of adopting improved seed varieties decreased by 37.7% for household who have access to off/non-farm income activities as compared those households they did not have access. Even though, access to off/non-farm activity is believed to raise the households' financial position to acquire new technologies but they can interested to continue the non-farm activities, and farmers unlikely to allocate some amount of money for improved seed of wheat. Consistent with this study, (26), reported that households who had off/non-farm income access are motivated to shift to non-agricultural tasks than adopting wheat packages.

Attitude of household towards his status (ATTITUDE): This variable affects positively the adoption of improved seed varieties and wheat row planting at 10% probability level of significances, and pesticide/chemicals application on wheat at 1% probability level of significance. As the attitude of the household head on his status changed to semi model and model from not model, the household plan to adopt wheat packages like improved seed by 29%, wheat row planting by 19.7%, and pesticides application on wheat by 21%. This implies that households who perceived themselves as model they encourage to adopt improved wheat packages than the farmers perceived themselves as not-model farmers. The result is consistent with (22), who reported that as attitude changes from laggard to early adopters, the probability of using herbicides on wheat production increase by 54.3%. On the other hand, (32), reported that

attitude of farmers was one of the major factors that determine their adoption decision towards improved wheat production technology.

Livestock size (TLU): The variable is measured by TLU (Tropical Livestock Unit), and it had a significant positive effect on adoption of wheat row planting at 1% significance level. The model revealed that as TLU of the household increases by one unit, probability of adoption wheat row planting increased by 6.8%, keeping others variables constant. The implication of this result is suggesting that, since row planting is labor intensive the more livestock owned households' have financial capacity to purchase and/or to hire additional labor on peak agricultural seasons like planting. The result is consistent with previous adoption studies on wheat packages (26); bread wheat technologies (33); wheat row planting (35); and teff row planting (27).

Average plot distance (AVERAGE PLOT): The variable is measured in minute and it has negative contribution for row planting and moisture conservation practices adoption on wheat at 1% and 10% probability level, respectively. As the plot distance of the households increased by a unit the probability of adopting the row planting and moisture conservation practices decreased by 0.41% and 0.39% respectively. This implies that since the row planting and moisture conservation practices are labor intensive activities, it may be challenging and less likely to implement the practices as the distance of the plot is being far away from the households' residence. In line to this study, many authors reported that as the distance of farmland from homesteads is large, farmers are not interested to adopt moisture conservation practices (30;34; 36; 37). Similarly, as the distance of the farm plot becoming longer from the household residence, the farmers are less likely to involve his/her family members on row planting rather they might be sown the wheat through broadcasting to save labor. However, the study shows a positive contribution for pesticide application on wheat production at 1% significance level. As model revealed that the probability of adopting the pesticides/chemicals use increased by 0.73% as the walking distance of the plot increased by one minute keeping other variables constant. This is because as the plot distance becomes far from the household residence the farmers will decrease the frequency of follow-up and practicing hand weeding rather they develop an interest to apply pesticides once at a time.

Extension services index (EXTENSION): Access to different extension services like field days, demonstrations, experience sharing, and attending training are expected to have positive

influence on row planting and pesticides/chemical use on wheat at 1% probability level. The model revealed that, if the extension services index increase by a unit the probability of adopting row planting and pesticide/chemical use on wheat increase by 98.6%, keeping constant other variables. This implies that farmers that have the chance to receive extension services can fill their knowledge gap on practical application (like row planting and pesticides/chemicals application on wheat production), that are provided to the farm households by extension workers and other concerned bodies. In line with this finding access to different extension services affects positively smallholder farmers' adoption of row planting on wheat (12;27); and the probability of applying improved seed and row planting on teff production (27). Furthermore, providing trainings and extension visit (like on farm demonstrations and field days) have a positive influence for adoption of improved bread wheat technologies (33). Pesticides are one of the important inputs in agriculture in general and wheat production in particular to prevent loss of production. The model revealed that as the extension services index increase by a unit, the probability of adopting pesticide/chemical use on wheat increase 79.4%, keeping constant other variables. This implies that farmers who receive more extension services can acquire practical knowledge and skill to apply pesticides on wheat. Consistence with this study, it has a positive influence on adoption of improved production practices like the disease, and insect-pest control (39); on adoption decision of herbicides (40); and pesticide use (25).

Credit access (CREDITACC): Credit has a positive contribution for adoption of the four wheat packages (improved seed, row planting, fertilizer application and conservation practices) at 1% probability level. As access to credit increases the household head will plan to increase the productivity of wheat using the necessary packages as compared to the households they did have not credit access. In line with this study, credit access have positive influence on the probability of wheat row planting adoption (35;42); adoption of improved wheat varieties (8;15;17;32;40;41); and adoption of improved seed and improved seeds + row planting technologies (27). Moreover, the model revealed that access to credit increases the households' probability of adopting fertilizer by 86.6% as compared to the households they did have not credit access. Previous studies reported that access to credit service positively determines the probability households' decision to adopt fertilizer (15; 28; 43). Furthermore, the model showed that access to credit increases the probability of adopting conservation practices by 52.62% as

compared to the households they did have not credit access. Consistence to this study, there was positive influence for adoption of soil and water conservation practices (31).

Table 5: Estimates of correlation coefficient for the error term from the five adoption equations for seed, row, fertilizer, chemical and moisture conservation practices

| Parameter | Coefficient | St error | T value | P value |
|--|-------------|----------|---------|---------|
| rho21 (Row and seed) | .2338778 | .0942636 | 2.48 | 0.013 |
| rho31 (Fertilizer and seed) | .8644996 | .0505302 | 17.11 | 0.000 |
| rho41 (Chemical and seed) | .1995203 | .089701 | 2.22 | 0.026 |
| rho51 (moisture conservation and seed) | .4826637 | .0804233 | 6.00 | 0.000 |
| rho32 (fertilizer and row) | -.2007677 | .1286846 | 1.56 | 0.119 |
| rho42 (chemical and row | .2251339 | .0776602 | 2.90 | 0.004 |
| rho52 (moisture conservation and row) | .3896512 | .0771265 | 5.05 | 0.000 |
| rho43 (chemical and fertilizer) | .2583494 | .0941723 | 2.74 | 0.006 |
| rho53 (moisture conservation and fertilizer) | .5040529 | .0883233 | 5.71 | 0.000 |
| rho54 (moisture conservation and chemical) | .2168342 | .0820067 | 2.64 | 0.008 |

Likelihood ratio test of $\rho_{21} = \rho_{31} = \rho_{41} = \rho_{51} = \rho_{32} = \rho_{42} = \rho_{52} = \rho_{43} = \rho_{53} = \rho_{54} = 0$: $\chi^2(10) = 136.516$. Prob > $\chi^2 = 0.0000$

Table 6: Results of the Multivariate Probit model

| Variables | Improved wheat variety | | Wheat row planting | | Fertilizer application | | Pesticide/Chemical application | | Moister conservation | |
|-----------------------------|------------------------|--------|----------------------|---------|------------------------|---------|--------------------------------|---------|----------------------|---------|
| | Coef. | Sd.err | Coef | Std.err | Coef | Std.err | Coef | Std.err | Coef | Std.err |
| SEXHH | 0.3221 | 0.2514 | -0.0008 | 0.2051 | 0.0174 | 0.3129 | 0.3581* | 0.2062 | -0.0447 | 0.2204 |
| AGEHH | 0.0033 | 0.0088 | -0.0045 | 0.0068 | 0.0242*** | 0.0116 | 0.0057 | 0.0067 | 0.0118* | 0.0071 |
| EDULEVEL | -0.2415 | 0.2037 | 0.0028 | 0.1496 | -0.1955 | 0.2637 | 0.1538 | 0.1495 | -0.0639 | 0.1568 |
| OFF-FARM | 0.3737*** | 0.1736 | 0.06629 | 0.1398 | -0.0800 | 0.2091 | -0.0254 | 0.1377 | -0.1832 | 0.1425 |
| FAMISIZE | 0.0513 | 0.0769 | 0.04163 | 0.0554 | -0.0004 | 0.1025 | 0.0020 | 0.0556 | -0.0859 | 0.0587 |
| ATTITUDE | 0.2711* | 0.1394 | 0.1970* | 0.1070 | 0.1453 | 0.1650 | 0.2101*** | 0.1060 | 0.0058 | 0.1118 |
| LANDSIZE | -0.1471 | 0.1990 | 0.0078 | 0.1504 | 0.2496 | 0.2848 | 0.2087 | 0.1485 | 0.1665 | 0.1624 |
| LIVESTOCK | 0.0390 | 0.0423 | 0.0678** * | 0.0312 | -0.0245 | 0.04508 | -0.0095 | 0.0323 | -0.0150 | 0.0307 |
| AVERAGEPLOT | -0.0001 | 0.0025 | 0.0045** * | 0.0022 | 0.0034 | 0.0034 | 0.0074*** | 0.0022 | -0.0039* | 0.0020 |
| EXTENSION | 0.15331 | 0.3020 | 0.9859** * | 0.2245 | 0.2333 | 0.3766 | 0.7939*** | 0.2238 | -0.0184 | 0.2329 |
| CREDITACC | 0.5822*** | 0.2235 | 0.4575** * | 0.2013 | 0.8662*** | 0.2332 | -0.0940 | 0.1901 | 0.5262*** | 0.1843 |
| Cons | 0.0830 | 0.4739 | 1.312*** | 0.4174 | -0.5277 | 0.5698 | 1.6669*** | 0.4119 | 0.1899 | 0.4115 |
| Log likelihood = -889.48732 | | | | | | | | | | |
| Wald chi2 (55) = 149.45 | | | | | | | | | | |
| Prob > chi2 = 0.0000 | | | | | | | | | | |

Note: ***, **, and * represents significance at 1%, 5% and 10% probability levels, respectively.

Source: Model output (2023)

4 Conclusion and Recommendations

Even though, the government had a plan to provide the extension services and introduce the improved production packages for every households of the region. But, practically the agricultural extension services and its implication for wheat packages adoption is influenced by many factors. This study tried to investigate the main factors from the collected 493 rural households' data. The study employed both descriptive statistics and Multivariate probit model. The descriptive analysis revealed that; on average the adoption of wheat packages was about 67%, but only 17% of the farmers adopt all the five wheat packages. Based on the Multivariate probit model result, eight variables were found the significance factors which determine the adoption of wheat packages. The factors were personal (sex, age, farmer perception on his status), institutional factors (credit access, extension services, off-farm income sources), physical factors like average plot distance and economic factor like livestock size.

Therefore, this study suggest that to increase the adoption of wheat packages, it will important to understand each package during promotion and dissemination. The policy and development interventions should also focus on awareness creation, improving institutional support systems and economic wealth of farmers for high rates of wheat packages adoption and their by leading to improve production and productivity of wheat producer farmers in Tigray and beyond in Ethiopia.

Disclaimer (Artificial intelligence)

Option 1:

Author(s) hereby declare that NO generative AI technologies such as Large Language Models (ChatGPT, COPILOT, etc) and text-to-image generators have been used during writing or editing of manuscripts.

Response: I have no used AI technologies

Option 2:

Author(s) hereby declare that generative AI technologies such as Large Language Models, etc have been used during writing or editing of manuscripts. This explanation will include the name, version, model, and source of the generative AI technology and as well as all input prompts provided to the generative AI technology

5 References

1. Yu B, Nin-Pratt A, Funes J, Gemessa SA. Cereal production and technology adoption in Ethiopia. *Internat. Food Policy Research Inst.*; 2011 Nov.
2. Guush Berhane GB, Catherine Ragasa CR, Gashaw Tadesse Abate GT, Thomas Woldu Assefa TW. The state of agricultural extension services in Ethiopia and their contribution to agricultural productivity.
3. CSA (Central Statistical Agency), Agricultural Sample Survey 2020/2021 (2013 E.C): Report on area and production of major crops, 2021, volume-I. Addis Ababa, Ethiopia.
4. Hoyum R. Nepal Fertilizer and Nutrient Assessment-Summary report: Nepal, Economic, Agriculture and Trade Activity. Washington, DC, USA. 2012;9.
5. Rodenburg J, Saito K, Irakiza R, Makokha DW, Onyuka EA, Senthilkumar K. Labor-saving weed technologies for lowland rice farmers in sub-Saharan Africa. *Weed technology*. 2015 Dec;29(4):751-7.
6. Tesfaye S, Bedada B, Mesay Y. Impact of improved wheat technology adoption on productivity and income in Ethiopia. *African Crop Science Journal*. 2016 Jul 6;24(s1):127-35.
7. Tekalegn, Negese Tamirat Jemal AbafitaEndeg. "Determinants of Wheat Crop Production Row Planting Technology Adoption in Duna Woreda, Hadiya Zone, Ethiopia." (2019).
8. Chandio AA, Jiang Y. Factors influencing the adoption of improved wheat varieties by rural households in Sindh, Pakistan. *AIMS Agriculture & Food*. 2018 Jul 1;3(3).
9. Addis Y, Sani S. Impact of adoption of improved agricultural production technologies on cereal crops productivity and farmers' welfare in Central Ethiopia. *Indian Journal of Science and Technology*. 2021 Dec 27;14(44):3280-7.
10. Getahun A, Kesho A. Adoption of wheat production technologies and productivity: evidence from south eastern Ethiopia. *World Journal of Agricultural Sciences*. 2022;18(1):32-7.
11. Alemu T, Emanu B, Haji J, Legesse B. Impact of wheat row planting on yield of smallholders in selected highland and lowland areas of Ethiopia. *International Journal of Agriculture and Forestry*. 2014;4(5):386-93.
12. Ejegayehu Yifter Wolde. Effect of wheat row planting technology adoption on small farms yield in Ofla Woreda, Ethiopia. *Int. J. Agri. Extension Rural Dev*. 2016 **3 (5): 184-196**.
13. Tamirat Mulatu N. Adoption of chemical fertilizer technology and household food security in Southern Ethiopia. *Agriculturae Conspectus Scientificus*. 2022 Jun 17;87(2):151-63.
14. Mahmood I, Imadi SR, Shazadi K, Gul A, Hakeem KR. Effects of pesticides on environment. *Plant, soil and microbes: volume 1: implications in crop science*. 2016:253-69.
15. Zegeye MB, Fikrie AH, Asefa AB. Impact of agricultural technology adoption on wheat productivity: Evidence from North Shewa Zone, Amhara Region, Ethiopia. *Cogent Economics & Finance*. 2022 Dec 31;10(1):2101223.
16. Yigezu, Yigezu A., Chilot Y. Tizale, and Aden Aw-Hassan. "Modeling farmers' adoption decisions of multiple crop technologies: The case of barley and potatoes in Ethiopia." (2015).

17. Geda MB, Haji J, Jemal K, Zeleke F. Determinants of adoption of climate smart agricultural technologies in wheat production in Arsi Zone, Oromia Region of Ethiopia. *Discover Food*. 2024 Feb 19;4(1):8.
18. TBPf (Tigray Bureau of planning and finance), Annual report 2014
19. Belderbos, René, Martin Carree, and Boris Lokshin. "Cooperative R&D and firm performance." *Research policy* 33.10 (2004): 1477-1492.
20. Greene, William. "Functional forms for the negative binomial model for count data." *Economics Letters* 99.3 (2008):585-590.
21. Teklewold H, Kassie M, Shiferaw B, Köhlin G. Cropping system diversification, conservation tillage and modern seed adoption in Ethiopia: Impacts on household income, agrochemical use and demand for labor. *Ecological Economics*. 2013 Sep 1;93:85-93.
22. Abebe G, Debebe S. Determinants of recommended agronomic practices adoption among wheat producing smallholder farmers in Sekela District of West Gojjam Zone, Ethiopia. *Journal of development and agricultural economics*. 2020 Feb 29;12(1):17-24.
23. Teklemariam A, Hagos K, Tedros M, Desale G, Hadush H, Zeberhe T, Yemane K, Abrhaley T, Daniel D, Tsegay G and Haftu K. Determinants in utilizing improved agricultural technologies for enhancing sorghum production in Tigray region, Northern Ethiopia, *International Journal of Agriculture Extension and Social Development*, 2020; 1(2):10-19.
24. Nambiro E, Okoth P. What factors influence the adoption of inorganic fertilizer by maize farmers? A case of Kakamega District, Western Kenya. *Scientific Research and Essays*. 2013 Feb 4;8(5):205-10.
25. Yordanos Yaynie, The impact of pesticides on maize production in southern Ethiopia. MSc Thesis submitted to Addis Ababa University, Ethiopia. (2021).
26. Gebremariam LT, Hagos H. Determinants of intensity of bread wheat packages adoption in Tigray, Northern Ethiopia. *Turkish Journal of Agriculture-Food Science and Technology*. 2018 Sep 18;6(9):1101-7.
27. Fikire AH, Emeru GM. Determinants of modern agricultural technology adoption for teff production: the case of MinjarShenkora woreda, north Shewa zone, Amhara region, Ethiopia. *Advances in Agriculture*. 2022;2022 (1):2384345.
28. Beshir H, Emanu B, Kassa B, Haji J. Determinants of chemical fertilizer technology adoption in North eastern highlands of Ethiopia: the double hurdle approach. *Journal of Research in Economics and International Finance*. 2012 Aug;1(2):39-49.
29. Anang BT, Zakariah A. Socioeconomic drivers of inoculant technology and chemical fertilizer utilization among soybean farmers in the Tolon District of Ghana. *Heliyon*. 2022 Jun 1;8(6).
30. Bazezew HA. Adoption of conservation agricultural practices: the case of Dangila District, Amhara Region, Ethiopia. *Global Journal of Agricultural Economics Extension and Rural Development*. 2015;3:295-307.
31. Feyisa TG. Is there a synergy in adoption of climate smart agricultural practices? evidences from Ethiopia. *Turkish Journal of Agriculture-Food Science and Technology*. 2022 Aug 22;10(8):1611-9.
32. Atinafu A, Lejebo M, Alemu A. Adoption of improved wheat production technology in Gorche district, Ethiopia. *Agriculture & Food Security*. 2022 Jan 17;11(1):3.

33. Siyum N, Giziew A, Abebe A. Factors influencing adoption of improved bread wheat technologies in Ethiopia: empirical evidence from Meket district. *Heliyon*. 2022 Feb 1;8(2).
34. Asfaw D, Neka M. Factors affecting adoption of soil and water conservation practices: the case of Wereillu Woreda (District), South Wollo Zone, Amhara Region, Ethiopia. *International Soil and Water Conservation Research*. 2017 Dec 1;5(4):273-9.
35. Negese T, Jemal A &Endeg T. Determinants of Wheat Crop Production Row Planting Technology Adoption in Duna Woreda, Hadiya Zone, Ethiopia. *Journal of Biology, Agriculture and Healthcare*, 2019; 9(17):22-27.
36. Kerse BL. Factors affecting adoption of soil and water conservation practices in the case of Damota watershed, Wolaita zone, Southern, Ethiopia. *International Journal of Agricultural Science Research*. 2018;7(1):1-9.
37. Wordofa MG, Okoyo EN, Erkalo E. Factors influencing adoption of improved structural soil and water conservation measures in Eastern Ethiopia. *Environmental Systems Research*. 2020 Dec;9:1-1.
38. Yifru GS, Miheretu BA. Farmers' adoption of soil and water conservation practices: the case of lege-lafto watershed, dessiezuria district, south wollo, Ethiopia. *PloS one*. 2022 Apr 11;17(4):e0265071.
39. Poudel D, Yadav RK, Gauli B, Chhetri A, Poudel S. Assessment of adoption of improved wheat production technology in Nawalparasi (West) district, Nepal. *International Journal of Agricultural and Applied Sciences*. 2021;2(2):69-74.
40. Kebede MD. Analysis on determinants of adoption of improved wheat technology in libenjawi District, Oromia Region, Ethiopia. *International Journal of Applied Agricultural Sciences*. 2020;6(3):36-43.
41. Subedi S, Ghimire YN, Adhikari SP, Devkota D, Shrestha J, Poudel HK, Sapkota BK. Adoption of certain improved varieties of wheat (*Triticum aestivum* L.) in seven different provinces of Nepal. *Archives of Agriculture and Environmental Science*. 2019;4(4):404-9.
42. Dinku A, Beyene F. Adoption determinants of row planting for wheat production in Munesa District of Oromia Region, Ethiopia. *Journal of Agricultural Extension and Rural Development*. 2019 Feb 28;11(2):25-34.
43. Dalango D, Tadesse T. Determinants of smallholder teff farmers chemical fertilizer technology adoption in Southern Ethiopia, in case of Gena District in Dawro Zone (Heckman Two-Stage Model). *Jurnal Perspektif Pembiayaan dan Pembangunan Daerah*. 2019 Nov 10;7(2):111-26.