

Case report

Ischemic Stroke Unveiling Takayasu Arteritis Complicated by Coronary Arteritis: Case Report and Literature Review

ABSTRACT

Context: We present the case of a 38-year-old woman admitted for ischemic stroke. Etiological evaluation revealed halo signs on transesophageal echocardiography (TEE), suggestive of Takayasu arteritis.

Case Presentation: During hospitalization, the patient developed chest pain, elevated troponin levels (300 ng/L), left ventricular hypokinesia on echocardiography, and T-wave inversions on electrocardiogram (ECG), indicating coronary arteritis. High-dose corticosteroid therapy led to rapid improvement in inflammatory markers. The diagnosis of Takayasu arteritis was confirmed based on the American College of Rheumatology (ACR) criteria. This case highlights the variable clinical presentation of Takayasu arteritis, including coronary involvement, and underscores the effectiveness of corticosteroid therapy in controlling inflammation.

Conclusion: Takayasu arteritis, though rare, can manifest with ischemic stroke and coronary arteritis. Prompt recognition and corticosteroid treatment are essential in managing this potentially life-threatening condition.

Keywords: Takayasu arteritis, Ischemic stroke, Coronary arteritis, Corticosteroid therapy, In-situ thrombosis, Acute coronary syndrome.

1. INTRODUCTION

Takayasu arteritis is a chronic large-vessel vasculitis that predominantly affects the aorta and its major branches. It primarily impacts young women and can lead to severe complications, including ischemic strokes and coronary involvement. Coronary arteritis is a rare but serious complication, often leading to acute coronary syndromes. Here, we present a case of Takayasu arteritis revealed by ischemic stroke and complicated by coronary arteritis.

2. CASE PRESENTATION

A 38-year-old woman with no significant past medical history was admitted for sudden onset of right-sided hemiparesis and aphasia, suggestive of ischemic stroke. On admission, her vital signs were stable, with a blood pressure of 140/90 mmHg and a heart rate of 90 beats per minute. Neurological examination revealed central facial paralysis on the right side and weakness in the right upper and lower limbs. A brain CT scan confirmed an ischemic infarct in the left middle cerebral artery (MCA) territory (Figure 1).

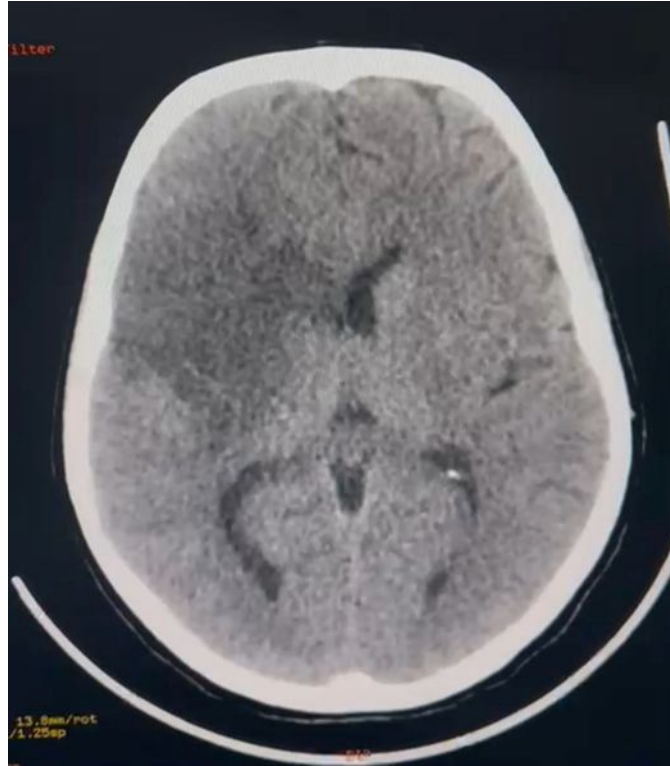


Figure 1: A brain CT scan confirmed an ischemic infarct in the left middle cerebral artery (MCA) territory. Further vascular imaging, including cerebral angiography, revealed the following:

- Occlusive and stenotic thickening involving the subclavian arteries, common carotid arteries, right internal carotid artery, and left vertebral artery, with in-situ thrombosis of the right common carotid artery. These findings were highly suggestive of Takayasu arteritis.
- Ischemic infarction of both the superficial and deep regions of the right MCA territory, with no hemorrhagic transformation.

Transesophageal echocardiography (TEE) showed thickening of the aortic wall with a halo sign, characteristic of vasculitis, supporting the diagnosis of Takayasu arteritis. Laboratory tests revealed elevated inflammatory markers, including C-reactive protein (CRP) at 80 mg/L and erythrocyte sedimentation rate (ESR) at 70 mm/h.

During hospitalization, the patient developed acute chest pain. Laboratory findings revealed an elevated troponin level (300 ng/L), suggesting myocardial involvement. Transthoracic echocardiography (TTE) demonstrated segmental wall motion abnormalities of the left ventricle, and the ECG showed T-wave inversions in the anterior leads, consistent with acute ischemia.

These findings were indicative of coronary arteritis, a rare but serious complication of Takayasu arteritis. The patient was promptly treated with high-dose corticosteroid therapy (prednisone 1 mg/kg/day), leading to rapid clinical improvement. Inflammatory markers significantly decreased, with CRP levels dropping to 20 mg/L and ESR to 30 mm/h.

3. DISCUSSION

Takayasu arteritis is a chronic granulomatous vasculitis affecting large arteries, most commonly the aorta and its primary branches. While it primarily affects young women, its clinical manifestations can be highly variable, ranging from systemic inflammatory symptoms to severe organ ischemia due to arterial stenosis or occlusion (1). In our case, the initial presentation with ischemic stroke led to the discovery of extensive vascular involvement, including stenosis of the common carotid and subclavian arteries.

Coronary arteritis, though rare, is a significant complication of Takayasu arteritis that can lead to acute coronary syndromes, as observed in our patient (2). The inflammation of the coronary arteries results from the same pathophysiological mechanisms seen in other large vessels affected by the disease, including arterial wall thickening, fibrosis, and, eventually, stenosis or occlusion (3). Coronary involvement is reported in 10% to 30% of Takayasu arteritis cases, with the ostium of the coronary arteries being the most frequently affected site (4).

In our case, the patient developed acute chest pain during hospitalization, with elevated troponin levels and echocardiographic evidence of segmental left ventricular dysfunction, indicating myocardial ischemia. This was further supported by ECG findings of T-wave inversions. These signs were consistent with coronary arteritis, a life-threatening complication that requires prompt recognition and treatment.

The diagnosis of Takayasu arteritis is based on a combination of clinical, laboratory, and imaging findings. In this case, transesophageal echocardiography (TEE) revealed thickening of the aortic wall with a characteristic halo sign, a key feature of vasculitis (5). This was further supported by cerebral angiography, which demonstrated stenosis and occlusion in multiple large vessels, including the carotid and subclavian arteries, alongside in-situ thrombosis of the right common carotid artery. These findings are consistent with the diagnostic criteria established by the American College of Rheumatology (6).

Imaging plays a critical role in diagnosing and monitoring Takayasu arteritis. Angiography, CT angiography, and magnetic resonance angiography (MRA) are valuable tools for visualizing vessel wall changes and identifying areas of stenosis or occlusion (7). The hallmark of the disease is concentric arterial wall thickening and stenosis, which can lead to ischemic events, as in our patient's ischemic stroke and myocardial ischemia.

Corticosteroids remain the first-line treatment for controlling systemic inflammation in Takayasu arteritis. High-dose corticosteroids (prednisone 1 mg/kg/day) were initiated in our patient, resulting in a rapid clinical and biological improvement, with a significant decrease in inflammatory markers (CRP and ESR). Early initiation of corticosteroid therapy is crucial to prevent disease progression and manage acute complications such as ischemic stroke and coronary arteritis (8).

For patients who are refractory to corticosteroid therapy, or who experience relapses, additional immunosuppressive agents such as methotrexate, azathioprine, or cyclophosphamide may be required (9). In patients with critical coronary stenosis or other severe vascular complications, surgical interventions such as coronary revascularization or vascular bypass surgery may be necessary (10).

Takayasu arteritis is a chronic disease with a relapsing-remitting course. Long-term follow-up is essential for monitoring disease activity and preventing recurrences. Regular imaging and clinical evaluations are recommended to assess disease progression and the response to therapy. In our case, after the initiation of corticosteroids, the patient demonstrated a significant reduction in symptoms and inflammatory markers, but close follow-up will be necessary to ensure continued disease control and to prevent further ischemic events.

4. CONCLUSION

This case highlights the complex and varied presentation of Takayasu arteritis, with simultaneous cerebral and coronary involvement. Coronary arteritis, though rare, can result in acute coronary syndromes that require

immediate attention and treatment. Corticosteroid therapy remains the cornerstone of treatment, but a multidisciplinary approach and long-term follow-up are critical to managing the disease and its complications.

UNDER PEER REVIEW

COMPETING INTERESTS

Declaration of competing interest should be placed here. All authors must disclose any financial and personal relationships with other people or organizations that could inappropriately influence (bias) their work. Examples of potential conflicts of interest include employment, consultancies, honoraria, paid expert testimony, patent applications/registrations, and grants or other funding. If no such declaration has been made by the authors, SDI reserves to assume and write this sentence: "Authors have declared that no competing interests exist."

CONSENT (WHEREEVER APPLICABLE)

No manuscripts will be peer-reviewed if a statement of patient consent is not presented during submission (wherever applicable).

This section is compulsory for medical journals. Other journals may require this section if found suitable. It should provide a statement to confirm that the patient has given their informed consent for the case report to be published. Journal editorial office may ask the copies of the consent documentation at any time.

Authors may use a form from their own institution or SDI Patient Consent Form 1.0. It is preferable that authors should send this form along with the submission. But if already not sent during submission, we may request to see a copy at any stages of pre and post publication.

If the person described in the case report has died, then consent for publication must be collected from their next of kin. If the individual described in the case report is a minor, or unable to provide consent, then consent must be sought from their parents or legal guardians.

Authors may use the following wordings for this section: "All authors declare that 'written informed consent was obtained from the patient (or other approved parties) for publication of this case report and accompanying images. A copy of the written consent is available for review by the Editorial office/Chief Editor/Editorial Board members of this journal."

ETHICAL APPROVAL (WHEREEVER APPLICABLE)

This section is compulsory for medical journals. Other journals may require this section if found suitable. If human subjects are involved, informed consent, protection of privacy, and other human rights are further criteria against which the manuscript will be judged. It should provide a statement to confirm that the authors have obtained all necessary ethical approval from suitable Institutional or State or National or International Committee. This confirms either that this study is not against the public interest, or that the release of information is allowed by legislation.

All manuscripts which deal with animal subjects must be approved by an Institutional Review Board (IRB), Ethical Committee, or an Animal Utilization Study Committee. , and this statement, and approval number, must accompany the submission. If required, author should be ready to submit a scanned copy of the IRB or Ethical Committee Approval at any stage of publication (Pre of post publication stage). The manuscript should contain information about any post-operative care and pain management for the animals.

For manuscripts involving animal experiments, Authors may use the following wordings for this section"All authors hereby declare that "Principles of laboratory animal care" (NIH publication No. 85-23, revised 1985) were followed, as well as specific national laws where applicable. All experiments have been examined and approved by the appropriate ethics committee"

All manuscripts which deal with the study of human subjects must be accompanied by Institutional Review Board (IRB) or Ethical Committee Approval, or the national or regional equivalent. The name of the Board or Committee giving approval and the study number assigned must accompany the submission. If required, author should be ready to submit a scanned copy of the IRB or Ethical Committee Approval at any stage of publication (Pre of post publication stage).

For manuscripts involving human experiments, Authors may use the following wordings for this section: "All authors hereby declare that all experiments have been examined and approved by the appropriate ethics committee and have therefore been performed in accordance with the ethical standards laid down in the 1964 Declaration of Helsinki."

REFERENCES

1. Arend WP, Michel BA, Bloch DA, et al. The American College of Rheumatology 1990 criteria for the classification of Takayasu arteritis. *Arthritis Rheum.* 1990;33(8):1129-1134.
2. Park MC, Lee SW, Park YB, et al. Coronary artery involvement in Takayasu arteritis: Patterns and clinical outcomes. *Int J Cardiol.* 2008;126(1):73-78.
3. Johnston SL, Lock RJ, Gompels MM. Takayasu arteritis: a review. *J Clin Pathol.* 2002;55(7):481-486.
4. Ishikawa K, Maetani S. Long-term outcome for 120 Japanese patients with Takayasu arteritis. *Circulation.* 1994;90(4):1855-1860.
5. Numano F, Kobayashi Y. Takayasu arteritis: Beyond pulselessness. *Intern Med.* 1999;38(3):226-232.
6. Kerr GS, Hallahan CW, Giordano J, et al. Takayasu arteritis. *Ann Intern Med.* 1994;120(11):919-929.
7. Tazelaar HD, Primack SL, Muller NL. Pulmonary vasculitis: radiologic features. *Radiology.* 1996;201(1):15-26.
8. Keser G, Direskeneli H, Aksu K. Management of Takayasu arteritis: A systematic review. *Rheumatology (Oxford).* 2014;53(5):793-801.
9. Shelhamer JH, Volkman DJ, Parrillo JE, et al. Takayasu's arteritis and its therapy. *Ann Intern Med.* 1985;103(1):121-126.
10. Sharma BK, Jain S, Suri S, et al. Diagnostic criteria for Takayasu arteritis. *Int J Cardiol.* 1996;54.