

INFLUENCE OF FOREST PLANTATION ESTABLISHMENT SCHEMES ON COMMUNITY LIVELIHOODS: A CASE OF MAKUTANO FOREST KERICHO COUNTY KENYA

ABSTRACT

Exploitation of forest resources especially through deforestation, has been a thorny issue to many countries. The exponential increase in population is creating pressure on forest land. To help restore forests, many countries have resulted to establishing forest plantations, either by direct or on-farm. At the same time, there is need to sustain livelihoods of these populations. Kenya on its part, adopted Plantation Establishment and livelihoods Improvement scheme (PELIS) program as part of participatory Forest management (PFM). This is as enshrined in the Forest Act (Part IV) of 2005 and the subsequent Forest Conservation and management Act, 2016. PELIS involves the planting of food crops together with tree seedlings. It is however not clear whether a balance has been strike between attaining forest cover and improving community livelihoods as was the intent of the program. Consequently, this study sought to shed light on this issue by looking at the influence of forest plantation on community livelihoods in Makutano forest, Kenya.

This study adopted the decentralized forest management theory. Cross-sectional research design was adopted since the data collected aimed at representing a large population. Quantitative and qualitative methods were employed in data collection and analysis. The target population was 1719 which included FAC households around Makutano forest, and CBO leaders of Makutano forest station. From this a sample of 212 was selected. Systematic sampling was used in selecting the households and snowball sampling in selecting the CBO leaders involved in focused group discussion. Administered questionnaire schedules were prepared to be used among household members. Focus group discussions were then conducted among the CBO leaders.

The key findings of the study indicated a significant influence of PELIS on community livelihood ($f = 221.642, P=0.000$). Those near the forest registered to have derived more economic benefits than those far away from the forest ($f= 3.127, P= 0.000$). The most important and most utilized forest products were firewood at 95%, fodder at 71% and droppers from tree pruning at 68%. Further research is needed on how more benefits from products like herbs, wild vegetables and honey cold be realized.

1. INTRODUCTION

Forests form part of the most important ecosystems to the human race. Many people depend either directly or indirectly on forest products and services. The American journal of Agriculture, (2016) notes that, the livelihoods of 1.6 billion people globally depend on healthy forests: of this, 1 billion are among the poorest people of the world. It further states that, destruction of forests have tangible impacts on the lives of poor communities. Deforestation and forest degradation has resulted to massive erosion of fertile agriculturally viable soils thereby threatening food security. This, in turn affects the lives of people living at the forest peripherals and even those away from the forests. Ageviet *et al.* (2016), identifies that, Forest Adjacent Communities (FAC), that is, people living at a 10 km radius from the forest edge highly rely on the forests for their livelihoods.

Deforestation and forest degradation has greatly reduced land under forest in the world. The exponential increase in world's population has resulted to overdependence on forest products and services hence the increase in deforestation and degradation of the forests. For example, Musyimi, (2018) observes that 3.4 million hectares of land under forests in Africa was being lost annually since year two thousand. This has created the need for the establishment of forest plantations. About 4% (123.7 million ha.), of the world's 3.4 billion hectares under forests, is estimated to be under forest plantations (Musyimi *et al.* 2018). These forests are essential for the provision of different forest goods such as timber, fuel, medicine, honey, poles, paper and food; also, these forests provide services such as recreational services, research, carbon sink/air purification, and climate modification, conservation of water catchment areas and biodiversity.

In establishing forest plantations and ensuring sustainability in forest management, resources are needed. It has been noted that there was a remarkable increase in forest cover in well of countries like North America, Europe and China while in the tropics, there was a decrease. The biggest drop was recorded in countries like DRC, Zambia, Nigeria, Tanzania and Zimbabwe (Butler, 2005; Gichuru, 2015). This shows that African countries have a lot to do in terms of increasing the continent's area of forest cover. Musyimi, (2018) notes that forests in Africa accounts for 21.4% of the total land surface which is about 674 million hectares.

If well managed, forest plantations can, to a great extent, serve the needs of the ever increasing population and at the same time prevent further destruction and degradation of the existing natural forest. In comparison to natural forests, plantation forests have been noted to produce better quality of wood and non-wood forest products (NWFP) not forgetting that they take relatively short period of time of 3-30 years to grow (Hashim *et al.* 2011; Hashim *et al.* 2015). Further argues that, the forest plantations with short rotational time and that have high yielding species and varieties has enabled sustainable supply of timber and non-timber products from smaller areas of land. Forest plantations therefore offers an opportunity in supplementing wood demands, thus reducing the resource exploitation of natural forests, and also help in recovering degraded lands and improve biodiversity conservation for the benefit of future generations (Parrotta 1992, 1995; Hashim *et al.* 2015). Nevertheless, management of this forest plantation has been faced by various challenges in terms of maintaining the forest ecosystem, biodiversity, soils, and adaptation to the changing climate.

Here in Kenya, the Ministry of environment and Forestry in its report of (2018), notes that, of Kenya's total land area, 7.4 percent is estimated to be covered by forests. This is below the 10% forest cover as recommended globally. It further states that, of this 7.4 percent forest cover in Kenya, only about 2% is closed canopy forest and which is mainly montane. This is still below the average Africa's and world's continuous forest cover of 9.3% and 21.4% respectively. Logging and forest clearing in Kenya's natural forest has been in a very high rate. Numerically, the report notes that in Kenya, the rate of forest depletion is about 5,000 hectares per annum. This calls for concerted efforts to save the forests from further degradation and deforestation. Currently, it is noted in the same report that, gazetted forest reserves are the most hit and are in the process of being rehabilitated by starting up forest plantation with an estimated 135,567 hectares having been developed by 2018. Many of these tree plantations are found in the five major Kenya's Water Towers which includes, Mount Kenya forest, the Mau Complex, Aberdare forest, Cherangani Hills and Mount Elgon.

In Kericho County, there are eight forest stations. These forest stations includes: Londiani, Makutano, Kuresoi, Sorget, Malaget, Tendano, Masaita, and Kericho. The largest part of these forest stations is made up of forest plantations or are in the process of being reforested after the natural forest were cleared. 3561.84 Ha of Makutano forest is occupied by exotic trees while 1343.01 Ha is covered by natural indigenous trees. Of the eight forest stations, Makutano station is noted to have the second largest area of natural forest (KFS, 2019).

Plantation establishment and livelihood scheme (PELIS) was initiated in Kenya under participatory forest management (PFM) in order to increase forest cover while also improving the people's livelihoods. Consequently Makutano community forest association (MACOFA) was formed in the year 2008. In other forests where this program was started, many of the community members have benefited; for example, Tobias, (2015) notes that 93.3% of the CFA members at Uasin Gishu County depend on forest farm cultivation for their livelihoods. Additionally, Nicodemus, (2013) in his study at Gathuru forest confirms that PELIS had contributed to food security in the area and improved household income. The PELIS program however, has been criticized of predisposing the forests to exploitation and allot of control by the government through the KFS. This control has denied the forest adjacent community the many diverse opportunities available under the program. The forest report, (2018) for example recommends the scraping off of the program due to the challenges that have been associated with it like illegal extension to the natural forest and river banks and interference of water infiltration. It also cites exploitation of some CFA members by the forest authorities and lack of a framework on benefit sharing. Kagombe and Gitonga, (2005) recommends that more research need be done on benefits of PELIS to FAC.

There are many studies done on the contribution of PELIS to forest cover change like studies carried out by Ageviet *et al.*, (2016) at Malava forest, Mutwiri *et al.*, (2017) on Londiani forest tree height and biomass and a paper by Michael *et al.*, (2015) on changes in planted forests and future global implications. Some of these studies like that by Ageviet *et al.*, (2016) touch on the livelihoods of forest adjacent communities (FAC). Makutano forest community is unique geographically demographically, socially, politically and

even economically as compared to other areas where influence of PELIS to community livelihoods has been carried out. Times have also changed with the government outlawing the growth of maize on forest land in the year 2019. There is no much data on opportunities still available for communities around Makutano forest, how the cut cost of forest plantation establishment translate to improved community livelihoods and the level of household participation in forest plantation establishment. This study was directed at bridging this gap of knowledge by investigating on the available opportunities under forest plantation establishment schemes for the forest adjacent communities, how they could exploit them in improving their livelihoods and how they could increase their involvement in forest plantation establishment activities as envisioned by the forest act 2016.

2. LITERATURE REVIEW

This study relates to the theory of decentralized forest management which is derived from the concept of decentralization. The concept is about transfer of powers from the central governments to institutions and lower levels of administrations (Agrawal and Ribot, 1999). Under right circumstances, the theory has been noted to work very well. This is mainly through improve efficiency, equity, democracy and proper resource management (Larson and Ribot 2004).

Land is a scarce resource especially among the poor populations and when made available can change their lives. Decentralization of forest management, which led to the formation of CFAs, made it easier for the communities living adjacent to forest access arable land as forest plantations were being established. Besides PELIS achieving its main objective of promoting forest plantation development, it has brought with it other benefits such as availing land for agriculture to the landless and contributing to food production (Paul O. *et al.*, 2013; Tobias, 2015). Further, Agevi, (2016) notes that the program has bettered the peoples' livelihoods through increased and varied food supplies of beans, potatoes, maize, carrots and kales. This has in turn assured the community of enough food supply throughout the year as well as increasing their income made from sales of the surplus harvests. In the planted forest, clear cut tree harvesting method is used. After the land is left free of trees, every block demarcated using firebreaks is assigned to a particular user group who are members of a given CFA. The land is subdivided into half acre plots. Members of the user groups lease the half acre plots land at a small fee of Ksh. 850 per year paid to the KFS through the leaders of the user groups.

Apart from land for cultivation, the community is involved in the pruning of the trees. The pruned branches are used as firewood or rafters for construction and fencing. According to a survey done by Elizabeth *et al.*, (2018) at the Aberdare forest ecosystem, identifies water, firewood and grazing land as the most vital forest products derived from the forest ecosystem at 98%, 70% and 67% respectively. Many conservation managers today look forward to accelerating income flows for the poor communities living adjacent to the protected areas (Adams *et al.*, 2004; Caroline *et al.*, 2018). Tobias (2015) quotes Prince Osei *et al.*, 2008 as having found out that, MTS was of great benefit to the whole community since the parents could now afford to take their children to senior high schools where enrolment had increase significantly.

Participatory forest management (PFM) program which started in Kenya back in 1997, as a way of increasing community involvement in forest conservation and management. Under this, the forest adjacent community would be involved in different forest activities in the plantation establishment schemes. Bremer *et al.*, (2014), argues that the extent to which local communities participate and benefit from plantation establishment schemes had a big influence on the sustainability and success of the programs. Additionally, Josphine *et al.*, (2016) delves in understanding the factors influencing level of participation of CFA members in PFM and identifies perceived benefits as the major factor. According to Mbuvi *et al.*, (2006) in Kakamega and Arabuko Sokoke state forests, Community Based Organizations (CBOs) are involved in seedling production, ecotourism enterprises among others.

Many people derive their livelihood from exploiting the forest resource such as, firewood, timber, pulp, poles, medicinal herbs etc., and services derived from the forest such as recreational services and research. It is estimated that globally, forests support the livelihoods of 1.6 billion people. In Africa, 6% of the GDP is credited to forest and forest resources. These statistics are the highest compared to other continents.

3. METHODOLOGY

3.1 Location of the Study Area

The study was carried out at Makutano forest which borders Masaita forest block to the south, Sorgetforest to the north. The forest is part of the larger Mau conservancy to the west. The forest is about 2100m above sea level experiencing tropical type of climate with double maxima around May to July and September to November. The forest station office is situated in Kipkelion East sub-county, Kericho County, Kenya. The forest station office can be accessed from Makutano at Nakuru-Eldoret highway. The forest is approximately 9km from Londiani town which is along Nakuru-Muhoroni road. It lies at latitude $0^{\circ}5'59''$ South to $0^{\circ}0'5''$ South and longitudes $35^{\circ}36'16''$ to $35^{\circ}39'26''$ East.

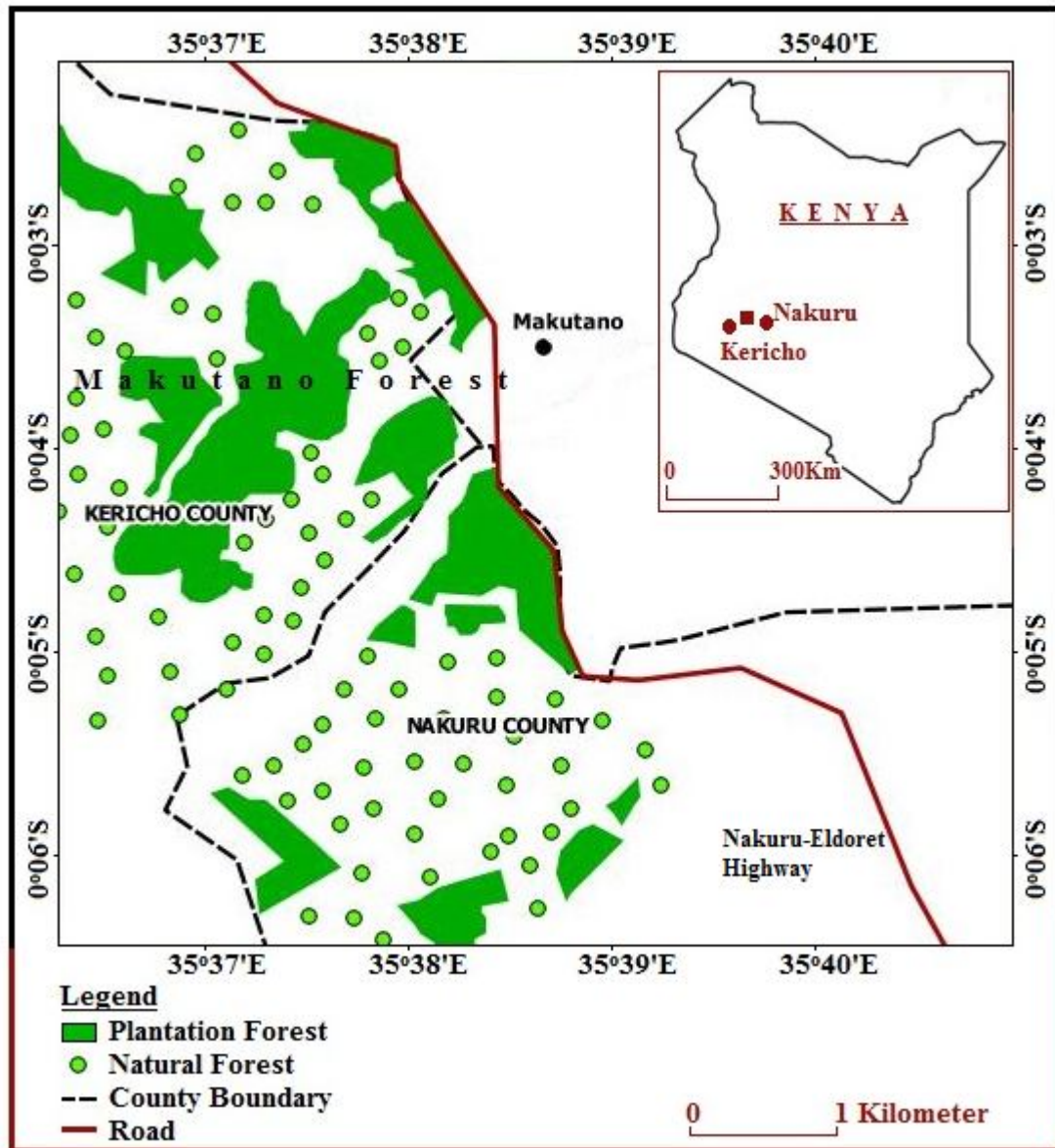


Figure 1: Map of Makutano forest

3.2 Research Design

The study adopted a cross-sectional research design. This design was preferred because the data collected aimed to represent a very large population. Hence helped gather data from a

representative sample of the forest adjacent community. The target population was 1719. The population is stratified as shown in Table 1 below;

Table 1. Target population

Strata	Total Population
FAC households	1649
CBO leaders	70
TOTAL	1719

There were 14 CBOs with each having 5 leaders each. Snowball sampling was employed in selecting one leader from each. Systematic sampling method was then used in selecting FAC members. To help come up with the number of households, to which household questionnaires were employed upon, the following formula of assigning proportions was used;

$(X/Y)*N$ where X=the number of households in each location

Y=total number of FAC households, and

N=sample size.

From all the 14 CBOs, one leader was also selected for the focused group discussion. This method was preferred because of its ease, convenience and reduced chances of biasness. According to Kothari (2004), the law of Statistical Regularity is achieved when random sampling method is used. This means that, on average, the sample chosen is a random one, and hence is a good reflection of the composition and characteristics of the whole population. The target population for the study was 1725. Nassium (2000), observes that, most surveys adopts a variation coefficient of between 21% and 30% and a 2% to 5% standard error range which in most cases are acceptable. This study employed a 30% variation and a 2% standard error. Nassium (2000), gives the formula as follows; $n=Nc^2/c^2 + (N-1) e^2$.

Where; n= Sample size, N= population, c= covariance, e= standard error.

For the sample population from each stratum, the method of proportional allocation was used.

Nassium (2000) formula was used to calculate the sample population for the households adjacent to the forest.

$$n = \frac{1649(0.3)^2}{0.3^2 + (1649-1) 0.02^2} = 198$$

Target population sample size is 198.

The total sample population therefore was 212 which included, 198 households, 14 CBO leaders. The table 2 below illustrates a summary of the sample population;

Table 2. Sample Population

Strata	Target population	Sample population
CFA members	1649	198
CBO leaders	70	14
Total	1719	212

The main source of data for this study were questionnaires administered to the CFO members and focused group discussions with the leaders of the respective CBOs. Research assistants with the guidance of the researcher administered the questionnaires. The questionnaires were reconciled each day as a way of taking stock of the day and to help avoid any compromise of the data collected. In collaboration with the participants and with the help of research assistants, the day for the focused group discussion was scheduled. Participants were informed on the date and venue.

The data collected was the analyzed using the statistical package for social sciences (SPSS) and excel package. Therefore with the help of this packages, inferential statistic method of data analyses was used to test the relationships and association of the dependent and independent variables and inferences made. Frequency tables were also used in analyzing some of the variables. Since most of the data to be collected is categorical, logistic regression was used to analyze these data while in case where numerical data collected, ANOVA was employed.

4. RESULTS

4.1 Households' basic information

4.1.1 Gender

Data on the gender of the respondent was collected, recorded and analyzed as shown in the table 3 below.

Table 3. Gender of the respondents

Gender	Frequency	Percent	Valid Percent	Cumulative Percent
male	96	48.5	48.5	48.5
female	102	51.5	51.5	100.0
Total	198	100.0	100.0	

From the table above, more women (51.5%) than men (48.5%) were involved in the study. This was a good representation in terms of gender balance in the study since the disparity was not a big margin.

4.1.2 Respondents' educational level

The researcher sought to know the educational level of the respondents. This was important so as to understand how to interact with them and how well they could interpret the PFM policy and laws. Table 4 illustrates the educational levels attained by respondents.

UNDER PEER REVIEW

Table 4. Educational level of the respondents

Level of Education	Frequency	Percent	Valid Percent	Cumulative Percent
Never been to school	21	10.6	10.6	10.6
primary level	101	51.0	51.0	61.6
Secondary	59	29.8	29.8	91.4
Tertiary	17	8.6	8.6	100.0
Total	198	100.0	100.0	

The data showed that 177 (89.4%) of the respondents had at least acquired some form of basic education though out of those, majority (51.0%) had only been up to primary level. Those who had never attended school were 10.6%. This indicates that most of the respondent could at least read and employ proper farming methods and could easily take up education on forest conservation offered through their CFA and the Kenya forest service. The literacy levels could also help in communication and coordination of the forest programs with ease.

4.1.3 Age bracket of the respondents

The researcher also sought to understand the age of the respondents. Age is one of the parameters of how active and able the society is in terms of producing viable labour. This would in turn help in exploiting the available resources effectively and efficiently. The results were as recorded in table 5 below.

Table 5: Age bracket of the respondents

Age bracket	Frequency	Percent	Valid Percent	Cumulative Percent
21-30	15	7.6	7.6	7.6
31-40	37	18.7	18.7	26.3
41-50	75	37.9	37.9	64.1
51-60	57	28.8	28.8	92.9
over 60	14	7.1	7.1	100.0
Total	198	100.0	100.0	

The results shows that majority of the respondents (56.6%) were of the age bracket of 31-50 years. This was a good percentage of the productive age bracket, who still had their children in school. This vibrant age bracket was ideal for the program of forest plantation establishment for they could easily take up the education on sustainable use of the forest resource to improve their livelihoods, not forgetting those of their children. The young people were few at 7.6% of the respondents. Those who were of age over 60 years and could be considered as aged and less productive, were also very few at 7.1%.

4.1.4 Household heads' main source of income

The main source of income in the household usually contributes to the largest part of the households' budget and therefore may be the largest contributor to the social welfare of the people. The researcher therefore sought to know the main source of income of the household heads. The results were as indicated in table 6 below.

Table 6. Main source of income of the household head

Main source of income	Frequency	Percent	Cumulative Percent
formal employment	23	11.6	11.6
business	27	13.6	25.3
Farmer	123	62.1	87.4
informal employment	25	12.6	100.0
Total	198	100.0	

Source: Researcher (2023)

Majority of the household heads (62.1%), derived their livelihoods from farming. This was a significant portion owing to the fact that the main activity they could be involved in, during the process of forest plantation establishment was farming. This group of people would help in planting tethering and taking good care of the trees as they cultivate the forest land. Those whose main of source income was business came second with 13.6%, while from informal and formal employment trailed with 12.6% and 11.6% respectively.

4.2 Influence of forest land cultivation under forest plantation establishment on community livelihoods

4.2.1 Size of forest land available

The size of land available to the household for cultivation was one of the independent variables used. The researcher sought to find out whether there was any significance influence of the size of forest land available for cultivation on the food security of the forest adjacent community. The average size of land that the households cultivated in the forest was found to be 1.9 acres. The household with the largest parcel having 4 parcels and the minimum being 1 parcel, each of half an acre.

Table 7: Size of the forest land available for utilization by the forest adjacent community ANOVA^a

Model		Sum of Squares	df	Mean Square	F	Sig.
1	Regression	20.883	1	20.883	221.642	.000 ^b
	Residual	21.482	197	.094		
	Total	42.365	198			

Source: Generated from SPSS, Researcher (2023)

The size of land available for cultivation was found to be statistically significant to food security among the community ($f= 221.642, P= 0.000$). From the coefficients' table, the chances of a household being food secure or able to get harvests enough for the whole year would increase by 70.2% if the land available for food crop production was increased by 1 acre. It was therefore noted a need to clear the already mature trees in order to increase land for cultivation and establish the plantation afresh.

From the focused group discussions, the average size of forest land allocation done to each household is two parcels, which were equivalent to one acre. The maximum amount of land that could be allocated to each farmer was not set but was dependent on the amount of forest land available in relation to the number of farmers. As of the time of this study the amount of forest land available for cultivation at Makutano forest station stood at 1200 acres. Of these, almost half of it had young trees which could not allow cultivation in the next two years.

know the crops grown, mainly in the forest land, and whether the harvests realized were enough to feed their families throughout the year. From the 198 respondents, 100% admitted to grow maize, 55% grew potatoes, 48% grow beans, 30% grow peas and 13% grow pumpkins. Most of these crops were grown together in the same parcel of land. The results on whether the harvests were enough to feed their households were as shown in the table 8 below.

Table 8: Are the produce harvested enough to feed your family throughout the year?

		Frequency	Percent	Valid Percent	Cumulative Percent
Valid	no	48	24.2	24.2	24.2
	yes	150	75.8	75.8	100.0
	Total	198	100.0	100.0	

Source: Generated from SPSS, Researcher (2023)

The largest population of the respondents (75.8%) admitted that the harvests were enough to feed their families throughout the year, while only 24.2% were not able to get enough harvests to take them through the year. This shows how important the harvests realized from forest land cultivation are to the forest adjacent community. The 75.8 percent was a good representative to indicate that there was food security among the forest adjacent community which largely could be attributed to forest land cultivation. It was also important to understand where the households, who did not get enough harvests from the forest land get food to feed their people for the rest of the year. Table 9 below shows this.

Table 9. Source of food for those who do not get enough harvest from the forest land

	Frequency	Percent	Valid Percent	Cumulative Percent
Harvest from my own farm	13	27.1	27.1	27.1

4.2.2 Amount of harvests

The amount of harvest realized from the forest land was another indicator of a cushioned community livelihood. The harvests could be used to feed the people or sold to generate income and help in educating their children or in diversifying the community livelihoods. First, the researcher sought to

Donations	14	29.2	29.2	56.3
Buying	20	41.7	41.7	98.0
Other sources	1	2	2	100.0
Total	48	100.0	100.0	

Source: Generated from SPSS, Researcher (2023)

Most of these households were well cushioned from extreme lack of food since they could be able to buy the food from other sources of income (41.7%) while 27.1% could get other harvests from their own farms to supplement the harvests from the forest. Only 31.2% of the 48 households were venerable; that is, those who relied on donations at 29.2% and those who relied on other unspecified sources at only 2%.

4.2.3 Economic value of harvested products from forest land cultivation

The research sought to understand the economic value of the harvests realized per year by the farmers. This would help to measure and tell how much the household head, distance of the household from the forest, and the size of the land allocated per household forest adjacent community accrued from the harvests. The economic value of the harvests was measured against household size, education level of the. The results were as illustrated in table 10 below.

UNDER PEER REVIEW

Table 10. Economic significance of the total harvest in relation to; household size, level of education, land size, and distance of the household from the forest.

ANOVA

		Sum of Squares	df	Mean Square	F	Sig.
total membership of household	Between Groups	127.314	44	2.894	1.264	.145
	Within Groups	423.473	185	2.289		
	Total	550.787	229			
level of education of the respondent	Between Groups	24.574	44	.559	.881	.683
	Within Groups	117.269	185	.634		
	Total	141.843	229			
How many plots do you own?	Between Groups	94.685	44	2.152	99.152	.000
	Within Groups	4.015	185	.022		
	Total	98.700	229			
How far is the homestead from the forest	Between Groups	62.767	44	1.427	3.127	.000
	Within Groups	84.390	185	.456		
	Total	147.158	229			

Source: Generated from SPSS, researcher (2023)

The results indicates that the income realized from the sales of the produced was highly dependent on the number of plots/size of the land allocated per household ($f=99.152$, $P=0.000$), and the distance from the forest ($f=3.127$, $P=0.000$). This indicates that the chances that the household would gain more economically from the forest harvest would increase by 99.152 percent if land allocation was increased by one acre, and by 3.127 percent if the distance from the forest land was reduced by one kilometer. Those with bigger parcels were noted to benefit more as compared to those with smaller parcels. Also, those at the radius of about 2-3 kilometers from, the forests realized higher economic benefits from the sale of the harvests as compared to those at a radius of one and four to five kilometers from the forest. However, the total household membership and the educational level of the household head did not have any significance to the much realized from the sales with ($f=1.264$, $P>0.05$) and ($f=0.881$, $P=0.683$) respectively.

4.3 Influence of forest products available under forest plantation establishment schemes on community livelihoods

4.3.1 The number of forest products available to the community and the number of people benefiting from the scheme

The respondents were requested to state the products that they were able to access from the forest as a result of forest plantation establishment schemes initiated at Makutano forest. These products were from the predetermined list and they had the liberty to add to the list any other products that was from the list and they could access from the forest. The summary of the responses given is as shown in table 11 below.

Table 11: Are you able to access the following from the forest plantation?

	Fodder droppers	firewood	wild vegetables	herbs	Honey	other products
N	Valid	198	198	198	198	198
Missing	0	0	0	0	0	0
Mean		.71	.68	.95	.17	.06

Source: Generated from SPSS, Researcher(2023)

The results indicates that 95% of the respondents were able to access firewood from the forest. From the focused group discussion, the community was allowed to collect firewood from the forest provided they had a permit from the forest office. They were also able to get firewood from pruning of the trees tantamount to the same condition of having a permit and a pruning saw from the forest office. This statistics shows a high reliance on firewood as a source of energy among the adjacent forest community. Falling at number two, in terms of accessibility was fodder at 71%. Many of the people around the forest fetch fodder for their animals from the forest or graze them there. This is an indication that the community highly depend on the forest for the feeding of their animals'. Droppers were at 68%, wild vegetables at 17%, herbs at 6%, honey at 1% and other products at 0% accessibility. The 0% accessibility of other products indicates that only the six predetermined products were accessible to the community. Very few community members were involved in bee keeping for honey production at only 1%. This was one product that had the potential of improving the community livelihoods but was not yet well utilized.

4.3.2 Influence of the available forest products on the community livelihoods

The products identified as having been made available under the forest plantation schemes, could be sold to generate income, and help the community in their day today expenses like educating their children, feeding their families or even used in starting of other income generating activities. The researcher sought to find out whether the access to these products significantly influenced the peoples' livelihoods. Table 16 below is a summary of the products available and their benefits that the community accrued from them.

Table 12: Benefits accrued from product derived from the forest plantation scheme

Benefits	fodder	Droppers	Firewood	Wild vegetables	Herbs	Honey	Others
Subsistence	65.7	76.5	90.9	20.9	5.2	0.4	0
Cash income	0.4	7	1.7	0	0	0.1	0
Both	0.9	6.1	4.8	0	0	0.9	0
Not applicable	33	10.4	2.6	20.9	94.8	98.6	0

Source: Researcher generation from SPSS(2023)

From the statistics above, firewood stood out as the product that the community mostly exploited at 90.9% for subsistence use, 1.7%, for cash income and 4.8% for both subsistence and cash income. The community heavily relied on firewood as a source of heat. At second, and third places were droppers (76.5%) and fodder (65.7%) respectively, both at subsistence level. Very few of the community member exploited these products for commercial purposes. Honey was the least exploited product at all levels.

Additionally the research sought to understand whether there was any correlation between the benefits accrued from the products and the contribution of the products to the household welfare. This is illustrated on table 13 below.

Table 13. Correlation between products' benefits and their contribution to the household welfare.

Correlations		Pbenefit	Pwelfare
Pbenefit	Pearson Correlation	1	.033**
	Sig. (2-tailed)		.000
	N	198	198
Pwelfare	Pearson Correlation	.033**	1
	Sig. (2-tailed)	.000	
	N	198	198

** . Correlation is significant at the 0.01 level (2-tailed).

Source: Researcher generation from SPSS(2023)

The table shows a strong relationship between the benefits accrued from the products and the contribution of the products to the household welfare with a correlation coefficient of $r=0.033$ and $P=0.000$. There was immense contribution of the forest products available under the forest plantation establishment schemes to the community livelihoods. The households were able to meet their needs like food and educating their children from the benefits accrued from the collection, use and sale of the products.

4.4 Influence of community involvement in forest plantation establishment activities on community livelihoods.

4.4.1 Influence of the frequency of attending meetings on the level of involvement in decision making and planning.

A binary logistic regression test was conducted and the results analyzed as illustrated in the table 14 below.

Table 14. Influence of the frequency of attending meetings on the level of involvement in decision making and planning of forest activities.

		B	S.E.	Wald	df	Sig.	Exp(B)
Step 1 ^a	Howfreq	3.479	.442	61.881	1	.000	32.411
	Gender	-.011	.372	.001	1	.976	.989
	Constant	-6.336	.968	42.855	1	.000	.002

Source: Researcher generation from SPSS(2023)

The results indicated a strong relationship between the frequency of attending CFA and CBO meetings, the level of involvement in decision making and planning of forest activities ($B = 3.479$, $P < 0.05$). The people who frequently attended meetings felt that they were more involved in the decision making and planning than those who rarely attended the meetings. These people could also be in a better position in making more informed decisions on forest activities than those who never or rarely attended the meetings.

The variable 'gender' was not found to be significantly influence the involvement of the community in forest plantation establishment activities ($B = -0.011$, $P = 0.976$). This indicates that both gender were involved in the forest activities equally. This was a positive indicator of non-segregation among people on the bases of gender when it came to forest activities involvement.

4.4.2 Influence of community involvement in tree planting, pruning and thinning activities to community livelihood.

The forest adjacent community is involved mainly in activities like tree planting, pruning and thinning, among others. The pruning and thinning is done after approval from the forest station office and a permit issued by the forester. Out of the sampled respondents, 100 percent were involved in one or more activities. These web of activities form the bases of the community livelihoods.

The researcher sought to understand how the involvement of the community in these activities influenced their livelihoods in terms of the income generation, their general well-being, and improvement of their living standards. The respondents were asked to rate the involvement in the forest plantation activities according to how they felt the activities influenced their livelihoods. From the focused group discussions with the CBO leaders, they reported a low turnout of the members when called for seminars and

workshops (45% to 50%), contrary to when they were called for plot allocation and payment (80% - 90%). Use of posters and announcements in the surrounding learning institutions and religious gatherings was identified as the most frequently used mode of passing on information from forest office to the CFA, CBO leaders and finally to the forest user groups.

The respondents were also asked to rate to a scale of 1-5, their involvement in forest activities against their importance to their livelihoods. The data collected was analyzed as shown in the table 15 below.

Table 15. Descriptive analysis (percentages) on how the respondents rated the involvement in forest activities according to importance to their livelihoods.

Activities	Rating					
	0	1	2	3	4	5
Others	100	0	0	0	0	0
Tree pruning	0	.9	1.7	20.0	46.1	31.3
Tree planting	0	24.8	40.9	19.6	11.3	3.5
Bee keeping	99.1	0	0	0	.9	0
Thinning	97.8	.9	.9	.9	.4	0
Tree nursery	96.1	.9	.9	.9	1.3	0

Source: Researcher generation from SPSS(2023)

The table indicates that the respondents were not involved in any other activities apart from the ones predetermined in the questionnaires. Those rated as the most important to the community livelihoods were only tree pruning and tree planting at 77.4 percent and 14.8 percent respectively. There were very few people involved and who attached benefits to bee-keeping (0.9%), thinning (3.2%), and tree nursery (3.9%). On involvement in any paid labour, only 3 percent of the respondents or a member of their household admitted to have been involved. Bee-keeping could be a viable venture for FAC in helping improve their livelihoods while they take care of the already established forests. The KFS office should also endeavor to involve the community more in the thinning and tree nursery establishment. This could go a long way in helping the community own up the process of forest plantation establishment and at the same time add into their income generation.

5. Discussion

The demographics of the study indicated that the both male and female were equally involved in the study. The families in most cases, were stable. This is because many of the households involved in the study were headed by parents, either the mother or the father with very few of them being headed by children or the grandparents. The respondents were mostly Christians though also other religions like the Muslims and the traditionalists were also represented. The 81.3 percent of the Christians indicates that most of the respondents had something in common and could meet regularly during worship and therefore could be easier when it came to communication on matters forestry. Majority of the respondents were also noted to belong to the same ethnicity. Concerning the main source of income of the respondents, 62.1 percent of them were farmers. This presented a good opportunity for the KFS to be able to bring them on board in establishing the forest plantation. Majority of them needed not much orientation in planting and taking care of the trees as they carried out farming in the forest land before the trees attained three years.

Findings indicated that forest land cultivation under the forest plantation establishment scheme greatly influenced the community livelihoods. This was manifested from the variables tested on the forest land available under the scheme, the amounts of harvests realized from the land and the economic value of the produce. The three indicated a positive correlation to an improved livelihood. For example, the size of land available for cultivation was found to be statistically significant to food security among the community ($f= 221.642, P= 0.000$). This was in agreement with the research done at Gathiuru forest Nyeri County by Nicodemus (2013), where he noted that cultivation work in the forest was the most undertaken activity in the area at a rating of 92.8 percent and that it had improved the food security of forest adjacent communities at a mean score of 4.32.

Secondly, the researcher found that there was a positive influence of the forest products available under the forests plantation establishment schemes to the livelihoods of the forest adjacent community. The

variables tested here were forest products available for exploitation by the FAC and the number of people who exploited them, and how these products influenced their general welfare. Statistics showed that firewood as one of the available products was the most exploited product at 90.9% for subsistence use, 1.7%, for cash income and 4.8% for both subsistence and cash income. The community heavily relied on firewood as a source of heat. At second, and third places were droppers (76.5%) and fodder (65.7%) respectively, both at subsistence level. Further, the data indicated a strong relationship between the benefits accrued from the products and the contribution of the products to the household welfare with a correlation coefficient of $r=0.033$ and $P=0.000$. This was attributed to the income generated from the sales of these products. This findings concurred with those by Rahman *et al.*, (2021), who observed that income from non-timber forest products (NTFPs), had a great positive significance to family income. There were also payments in kind from these products; like poles and droppers were used in constructing their own houses and fencing of compounds, the collected wild herbs in curing some mild illnesses, and wild vegetables for their own consumption. It was also in agreement with a survey done by Elizabeth *et al.*, (2018) at the Aberdare forest ecosystem, which identifies firewood and grazing land as the most vital forest products derived from the forest ecosystem at 70% and 67% respectively. Lastly a link was noted to exist between community involvements in forest establishment activities, on community livelihoods. The variables here included the number of people who attended meetings against the registered members of the CFA, frequency of attending meetings, the number of activities that the respondents involved themselves in and the benefits accrued from those activities. The results indicated a strong relationship between the frequency of attending CFA and CBO meetings, the level of involvement in decision making and planning of forest activities ($B = 3.479$, $P < 0.05$). Access to information through meetings attendance also contributed to the community involvement in forest activities and therefore could be able to reap maximum benefits from the program. Kwayuet *et al.*, (2014), notes that access to information significantly influenced participation in decision making and hence would help the community to gain more. According to the ratings done by the respondents on benefits attached to involvement in forest activities more benefits were attached to pruning and planting of tree seedlings at 77.4 percent and 14.8 percent respectively. The benefits were either in kind like fencing and building materials or cash from the sales realized. There were very few people involved and who attached benefits to bee-keeping (0.9%), thinning (3.2%), and tree nursery establishment (3.9%). This was a strong indication that involvement in these activities greatly influenced the community livelihoods. However, the involvement in activities that did not attract many in the community like bee-keeping, and that had the potential of improving peoples' livelihoods needed to be emphasized and the community educated more on their benefits. In the course of the study however were some limitations. There was a problem of language barrier. Many of the CFA members come from different ethnic groups. This was overcome through hiring of an interpreter. Other limitations were poor terrain, water logged soils and harsh weather conditions. These limitation presented a challenge during data collection since the study was done during the rainy season.

6. Conclusions

This study examined the influence of forest plantation establishment schemes on community livelihoods at Makutano forest Kericho County. From the findings of this study, it is evident that community livelihoods are highly influenced by the forest plantation establishment scheme. The community has been involved in various activities like food crop cultivation in the forest land before tree canopy, tree planting, grazing and fodder collection from the forest, tree pruning, and tree nursery establishment. This participation in forest activities helped the community in improving their livelihoods. Some of these activities like tree nursery establishment and tree planting offered paid labor for them. Most of the households were noted to be food secure courtesy of the food produced from forest land cultivation. They are also able to extract some of the forest products like firewood, which was the main source of energy for majority of the households. Other products extracted were wild vegetables, herbs and honey. The sale of the farm produce and the other forest products have helped them diversify their income sources like buying of more daily animals for milk production, buying motorbikes for transport purposes, buying land for agriculture and settlement, among others. The harvests were also found to be a key driver to their children education since they were used in the school feeding programs and the surplus sold to cater for school fees. It was also noted that the community involvement in different forest activities across both gender and age groups was fair. In terms of gender there was a 51.5% representation of women and

48.5% men. This was a good representation in terms of both gender being involved in forest activities since the disparity was not by a big margin.

REFERENCES

- Agevi, H., Mwendwa, K., Koros, H., Mulinya, C., Kawawa, R., Calvince, K., Kipkorir, D., Wabusya, M., Khanyufu, M., & Jawuoro, S. (2016). PELIS Forestry Programme as a Strategy for Increasing Forest Cover and Improving Community Livelihoods: Case of Malava Forest, Western Kenya. *American Journal of Agriculture and Forestry*. Vol. 4, No. 5, 2016, pp. 128-135. Doi:10.11648/j.ajaf.20160405.13
- Agrawal, A., & Gupta, K. (2005). Decentralization and participation: the Governance of common pool resources in Nepal Terai. *World development*, 33(7):1101-1111 <https://doi.org/10.1016/j.worlddev.2005.04.009>
- Akamani, K., & Hall, T. E. (2015). Determinants of the process and outcomes of household participation in collaborative forest management in Ghana: A quantitative test of a community resilience model. *Journal of Environmental management*, 147:1—11.
- Alkire, S., Foster J.E., Seth S., Santos M.E., Roche J.M., & Ballom P., (2015). Multidimensional poverty measurement and analysis, Oxford university press, *ch.3*.
- Anna, J. N., Peter K. S., Joseph H., Erick K. (2018). Does participatory forest management practices lead to forest regeneration and improved community livelihood? Success and challenges in Nabkoi forest, Kenya. *Research Journal's Journal of forestry vol.5/ No.1* Retrieved from www.researchjournal.com
- Ayub, M. O. (2020). Livelihood impacts and governance processes of community-based wildlife conservation in Maasai Mara ecosystem, Kenya. *Journal of Environmental Management* Vol.260.
- Benjamin, F. K., Helen, W., Tim, A. H., Alexandra-Maria, K., & Sara D. L. (2016). Urban gardens promote bee foraging over natural habitats and plantations. *Ecology and Evolution* 2016; 6(5): 1304-1316 doi:10.1002/ece3.1941
- Blarat, K.P., Peter, B., Mike N., & Yam, B.M. (2007). Community forestry: conserving forests, sustaining livelihoods and strengthening democracy. *Journal of forest and livelihood* 6(2). Edinburgh, UK
- Bremer, L.L., Farley, K.A., Lopez-Carr, D. (2014). What factors influence participation in payment for ecosystem services programs? *An evaluation of Ecuador's SocioParamo program*
- Caroline, H., Esteve, C., Bhaskar, V., Daniel, B., & William, M. A. (2018). Distinct positions underpin ecosystem services for poverty alleviation. Doi: 10.1017/soo30605318000261
- Charles, A. (ed) (2021). Communities, conservation and livelihoods. Gland, Switzerland: IUCN and Halifax, Canada: Community Conservation Research Network. Retrieved from <https://doi.org/10.2305/IUCN.CH.2021.01.en>
- Cobbinah, P.B., et al. (2014). Rethinking sustainable development within the framework of poverty and urbanization in developing countries. *Environmental development*: Retrieved from <http://dx.doi.org/10.1016/j.envder.2014.11.001>
- Elizabeth, W.W., Gilbert, O. O., & Bernard, K. K. (2018). Effects of forest management approach on household economy and community participation in conservation: A case of Aberdare forest ecosystem, Kenya. *International journal of biodiversity and conservation*. Retrieved from <https://doi.org/10.5897/1JBC2017.1161>
- Esther, W., Robert, M., Josiah, A. (2021). Determinants of forest dependent household's participation in payment for ecosystem services: Evidence from Plantation Establishment Livelihood Improvement Scheme (PELIS) in Kenya. *Global journal on Ecology and Conservation, Science Direct*. Retrieved from <https://doi.org/10.1016/j.gecco.2021.e01514>
- Food and Agricultural Organization of United Nations, (2017). Forests and trees supporting rural livelihoods; Case studies from Myanmar and Viet Nam. *Planted forests and trees working paper series No. 50*
- Gall, M., Gall, J., & Borg, W. (2007). Educational research: An introduction (8th Edition). New York.

- Gichuru, I. I. (2015). Factors contributing to the success of Pelis strategy in forest plantation establishment: Case study of Muccheene forest. *International Academic Journal of Social Sciences and Education*, 1 (4), 15-45
- GOK, (2005). Forest Act. Nairobi; Kenya: Government printers.
- Hashim, M. N., Mohd, H. M.A., Syafinie, A. M. (2015). Strategies forest plantation establishment in Malaysia for future product development and utilization. Retrieved from <https://www.researchgate.net/publication/289055887>
- Helen, N., Eagle, C. M., Puri, R. K., & Watson C. W. (2011). Conducting research in conservation: *social science methods and practice*. Routledge, New York: Longman
- Hillary, S., Keith, B., Neil, B., Alex, V.D.M.S., Somvang, P., Rodney, K., Vongvilay, V. (2016). Tree plantations in Lao PDR: *Policy framework and review*
- Hussein R., Kendie B., Agbesinyale P. (2016). Community participation in the management of forest reserves in the Northern Region of Ghana, *International Journal for Sustainable Development World Ecol.* 23:245–256.
- International Federation of Red Cross and Red Crescent Societies (2015). Livelihood indicators guide. Retrieved from <https://www.livelihoodscentre.org/>
- International Federation of Red Cross and Red Crescent Societies, (2006). How to conduct a food security assessment; *a step-by-step guide for national societies in Africa*. (2nd Ed)
- Ismail, O. A., Labode, P., & Idowu, O. S. (2017). An assessment of the forest regeneration potential of the taungya system of farming in Oyo State, south-western Nigeria, *Southern Forests: A Journal of Forest Science*, 79:2, 143-151, DOI:10.2989/20702620.2016.1255425
- Janne, R., Olli, T. (2017). Optimizing the harvest timing in continuous cover forest.
- Jason, H. (2016). The true extent of global poverty and hunger: *Questioning the good news narrative of the millennium development goals*, 3rd world quarterly. DOI:10.1080/01436597.2015.1109439
- Jens, F.L., & Thorsten, T. (2008). Are we getting there? Forest management from the Tanzanian Miambo Woodlands.
- Josephine, K.M., Jayne, M., Kennedy, M., & Mbae, M. (2016). Factors influencing level of participation of community forest associations in management of forests in Kenya. *Journal of sustainable forestry*, 353,205-216, DOI:10.1080/10549811.2016.1142454
- Kagombe, J. K. (2014). Contribution of Pelis towards increased tree cover and improved community livelihoods in Kenya. KEFRI, Nairobi, Kenya
- Kagombe, J. K., and Gitonga J. M. (2005). Plantation Establishment in Kenya: The *shambaSystem* Case Study.
- KNBS 2019 Kenya Population and Housing Census (2019). Volume 1: Population by county and sub-county. *Kenya National Bureau of Statistics, Nairobi Kenya*.
- Kenneth, G., MacDicken, Phosiso, S., John, E. Hall, Cesar, S., Martin, T., & Carlos, W. (2015) Global progress towards sustainable forest management. *Forest Ecology and Management*. Retrieved from <http://doi.org/10.1016/j.foreco.2015.02.005>
- Kevin, L.O. (2015). What is close-to-nature silviculture in a changing world? *An International Journal of Forest Research*. doi:10.1093/forestry/cpv043
- KFS, (2018). Londiani participatory forest management plan 2018-2022. Bogor, Indonesia: CIFOR.
- Kiyingi, I., Adriss, Phiri, M., Buyinza, M., & Agaba, H. (2016). The impacts of farm forestry on poverty alleviation and food security in Uganda. *Journal of sustainable development*. doi.org/10.5539/jsd.v9n/p150
- Klaus, J. P., Scott, M. W., Susan, C. B., Pablo, J. D., Lars, D., Girma, B., Brian, D. H., Thomas, K., Yuanchang, L., Susanna, N., Francis, E. P., Toshiya, Y., and Jürgen, B. (2015). Forest management
- KNBS and Society for international development (2013). Exploring Kenya's inequality. *Pulling a part or pooling together? Kericho County*
- Kothari, C. R. (2004). Research methodology: methods and techniques (2nd Ed). New Age International publishers, New Delhi

- Kwayu E.J., Sallu, S.M., & Paavola, J. (2014). Farmer participation in the equitable payments for watershed services in Morogoro, Tanzania. *Ecosystem Services* 7: 1-9
- Leah, G. (2018). Impacts of participatory Forest Management on community livelihood: Case of Kereita forest Kenya. Victoria University of Wellington New Zealand.
- Meriadec, S., Juliana, V., Daniel, A. F. (2017). Vegetation regeneration in a sustainably harvested mangrove forest in West Papua, Indonesia. *Forest ecology and management journal*; Retrieved from <http://www.elsevier.com/locate/foreco>
- Ministry of Environment and Forestry, (2018). Task force report on forest resources management and logging activities in Kenya. Government printers. Nairobi Kenya
- Musyimi, F. K., Koech, E., & Sirmach, P. (2018). Tree survival in forest plantation establishment and livelihood improvement scheme (PELIS) in Kericho County, Kenya. *Research Journal of Agriculture and forestry sciences Vol. 6(1)*
- Mutwiri, F. K., Odera, P.A., & Kinyanjui, M. J. (2017). Estimation of tree height and forest Biomass using Airborne LiDAR Data: A case study of Londiani forest Block in the Mau Complex. *Kenya OpenJournal of forestry*7, 255-269. Retrieved from <https://doi.org/10.4236/ojf.2017.7206>
- Nayu, N.W., Ida, T., & Marieve, P. (2016). Contribution of forest restoration to rural livelihoods and household income in Indonesia. *Sustainability* 2016, 8,835; doi: 10.3390/su8090835
- Nicodemus, M.M. (2013). Influence of plantation establishment livelihood improvement scheme on livelihood of forest adjacent communities: A case of Gathiuru forest Nyeri County.
- Okumu, B. (2017). Economic analysis of participatory forest management in Kenya. University of Cape Town.
- Opanga, P. S. (2009). Community participation in urban forest management. A case study of Ngong road forest
- Puettmann, J. P. (2015). Forest ecosystems. 2:8 Doi10.1186/s40663-015-0031-x
- Qunying, X., Huijun, L., & Marcus, F. (2018). Assessing livelihood reconstruction in resettlement program for disaster prevention at Baihe county of China: *Extension of the impoverishment risks and reconstruction model*. Retrieved from <https://www.mdpi.com/journal/sustainability>
- Rahman, H., Roy, B., Islam, S. (2021). Contribution of non-timber forest products to the forest-dependent communities around the Khadimnagar National Park in northeastern Bangladesh. *Regional Sustainability, volume 2, pgs 280-295*. Retrieved from <https://doi.org/10.1016/j.regsus.2021.11.01>
- Ranaivo, A., Rasolofson, Julia, P.G., & Jones, (2015). Biological conservation: Effectiveness of community forest management at reducing deforestation in Madagascar. *Vol.184 pg. 217-277*. [Doi.org/10.1016/j.biocon.2015.01.027](https://doi.org/10.1016/j.biocon.2015.01.027)
- Republic of Kenya, (2016). Kenya forest conservation and management Act, Kenya gazette supplement No. 155(Act No.34). Government printer, Nairobi.
- Robert, E.M., & Oleg, V.S. (2008). Prospects for enhancing livelihoods, communities, and biodiversity in Africa through community-based forest management: a critical analysis. Routledge toylor& Francis group. DOI: 10.1080/13549830701809700
- Rodney, J.K., Erik, L. (2015). Forest ecology and management: Dynamics of global forest area; *Results from the FAO global forest resources assessment. Vol.352 pg9-20* doi.org/10.1016/j.foreco.2015.06.014
- Solomon, T., Muluneh, W., & Feyera, S. (2017). Forest users' level of participation in a participatory forest management program in southwestern Ethiopia. *Forest Science and Technology, 13:4, 164-173*, DOI:10.1080/21580103.2017.1387613
- Tacconi, L. (2007). Decentralization, forests and livelihoods: theory and narrative. *Global Environmental Change. 17:338–348*.
- Tobias, O. A. (2015). Influence of plantation establishment and livelihood improvement scheme on forest cover: A case of Uasin Gishu County, Kenya.
- Zuzana, B., Fangyuan, H., Hian, P. K., Claude, G., and Francis, P. (2015). A critical comparison of conventional, certified, and community management of tropical forests for timber in terms of environmental, economic, and social variables. *A journal of the society for conservation biology*, Princeton University, Princeton, NJ, USA.