

# Biological characterization of geo-referenced soil samples from major rice-growing tracts of Southern Kerala

## Abstract

A survey was conducted from January to March 2023 to assess the soil biological fertility index across five agro-ecological units in the rice-growing belts of Southern Kerala. These units included Onattukara sandy loam (AEU 3), Kari soil (AEU 4), Pokkali soil (AEU 5), Southern laterites (AEU 8), and Midland laterites (AEU 9). The study was carried out by the College of Agriculture, Vellayani, and Thiruvananthapuram. The survey aimed to assess microbial activity and organic carbon content, thereby enhancing our understanding of the biological fertility across these diverse soil types. Twenty geo-referenced surface soil samples @ 0- 15 cm were collected in every AEU by prescribed method. The collected samples were subjected to the characterization of soil biological properties such as dehydrogenase activity, organic carbon, microbial biomass C, microbial biomass N and soil respiratory rate following the standard protocol. The findings showed that organic carbon in AEU 5 with the highest mean value (3.03 %), followed by AEU 4 (2.19 %), AEU 9 (2.01 %), AEU 8 (1.01 %), and AEU 3 (0.56 %). Dehydrogenase activity was highest in AEU 5 ( $682.54 \mu\text{g TPF g}^{-1} \text{hr}^{-1}$ ), followed by AEU 4, AEU 9, and AEU 8, and lowest in AEU 8 ( $95.08 \mu\text{g TPF g}^{-1} \text{hr}^{-1}$ ). AEU 5 exhibited the highest microbial biomass carbon and microbial biomass nitrogen activities, while AEU 8 showed the lowest. Soil respiration was highest in AEU 5 and lowest in AEU 3. Based on these soil microbiological indicators, soils were classified into three categories: low, medium, and high fertility. The Biological Fertility Index (BFI) scores indicated favorable conditions in AEU 4 and 5, moderate in AEU 9, and low in AEU 3 and 8. By establishing a comprehensive understanding of soil biological fertility across various agro-ecological units, the research aims to contribute to improved soil health and crop productivity in the region.

**Keywords:** *Agroecological units, Soil biological properties biological fertility index, Rice, Wetland soils*

## 1. Introduction

Soil biological characteristics reflect both the direct and indirect impact of the organisms residing within a specific soil. These biological processes involve the cycling of carbon and nutrients, biotic interactions contributing to soil formation, microbial abundance, enzyme functions, as well as microbial biomass of C, N, and S [3]. Among the array of enzymes present in soil environments, dehydrogenase holds significant importance as serve as an index of overall microbial activity within the soil. Their significance lies in the fact that they are intracellular and present in all living microbial cells [18, 28, 30]. Furthermore, their function is closely associated

with microbial oxidoreduction processes. Soil organic matter (OM), is regarded as a key indicator of soil quality due to its role as a reservoir and contributor of nutrients that can improve soil physical and chemical attributes, while also stimulating biological processes [22]. Remarkably, it's not solely the quantity of OM in the soil that holds significance, but primarily its quality, as OM influences the provision of energy for microbial proliferation and the production of enzymes. Manral *et al* [17] revealed that the microbial biomass within soil significantly influences soil processes like nitrogen mineralization and serves as a bio-indicator of current climatic shifts. Soil microorganism activity in organic matter decomposition governs the mineralization and immobilization of nutrients, influencing nutrient availability in soil crucial for plant growth. Soil microbial biomass functioning as a reservoir and consumer of accessible nutrients, holds significant importance in the transformation of nutrients within the soil. Alterations in microbial biomass have the potential to impact the turnover of soil organic matter. Consequently, soil microbial activity directly influences the stability and fertility of soil. The assessment of microbial biomass serves as a valuable tool for evaluating soil quality. Soil respiration quantifies the CO<sub>2</sub> emitted by soil, indicating the collective CO<sub>2</sub> release from various living organisms such as bacteria, fungi, earthworms, protists, roots, and more. These measurements serve in carbon balance calculations and serve as an index for soil health [10]. At the global scale, soil fertility is emerging as a significant concern because changing climatic conditions are leading to declines in soil properties attributed to alterations in soil biota, encompassing both fauna and flora [11]. Kerala state delineated into twenty-three agroecological units has been established considering climate, topography, and soil characteristics. Each AEU corresponds to specific soil and climatic conditions. Therefore, the present study is envisaged to investigate the biological properties of various agroecological units and thematic maps were generated highlighting the biological fertility index of wetland soils of Southern Kerala. To evaluate the spatial distribution of soil biological fertility across different agro-ecological units (AEUs) in Southern Kerala, identifying areas of high and low fertility. This provides valuable insights into the biological fertility index of soils in Southern Kerala, which is crucial for understanding soil health and sustainable agricultural practices in the region. By employing comprehensive parameters such as dehydrogenase activity, microbial biomass carbon, and organic carbon content, the study presents a robust framework for assessing soil quality, potentially influencing future research and policy decisions.

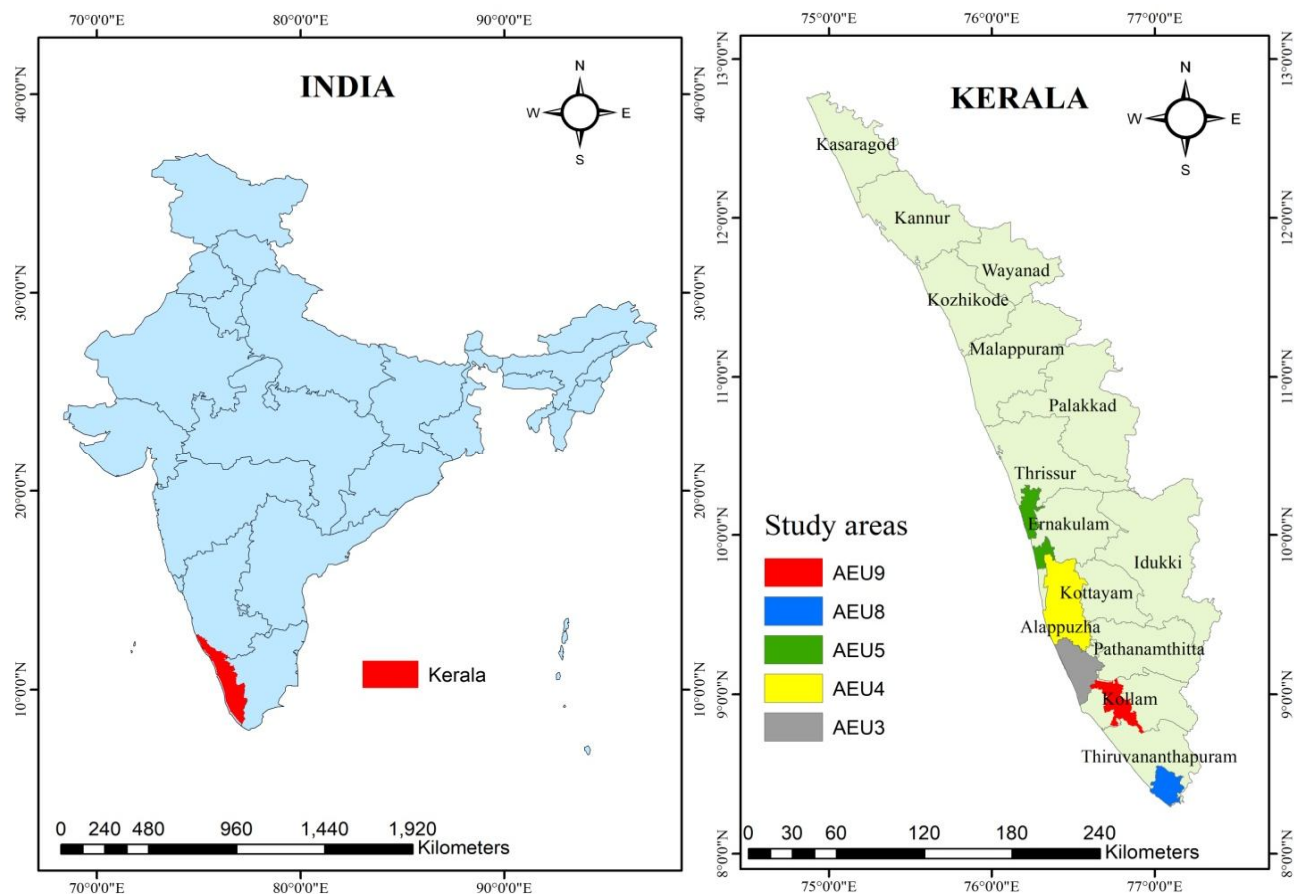
## 2. Materials and Methods

Initially, a survey was conducted in the five agro-ecological units of rice-growing regions in Southern Kerala by the College of Agriculture, Vellayani, Thiruvananthapuram, during the period from January to March 2023. The aim of this survey was to assess soil biological fertility and related factors across these zones *viz.*, Onattukara sandy loam (AEU 3), – ORARS, pathiyoor, cheppadand, Thattarambalam is located in the kayamkulam municipality of Alappuzha district, Kari soil (AEU 4), Pokkali soil (AEU 5)- Kumbalanganal, pallurthy, Kalluchira and Kuzhuppilly of Ernakulam district, Southern laterites (AEU 8)- Vellayani, Chenkal, and Kalliyoor of Thiruvanthapuram district and Midland laterites (AEU 9)-Chenapara, Kariakoam,

Kuttikonam and Vettikavala. Wetland soil samples were collected @ 0-15 cm as per the standard procedure. The biological properties including dehydrogenase activity, organic carbon, microbial biomass carbon, microbial biomass N, and soil respiratory rate were estimated. The method for measuring dehydrogenase activity, as outlined by Casida *et al* [8], involved the utilization of 3% 2, 3, 5-triphenyl tetrazolium chloride (TTC). The concentration of dehydrogenase present in the sample was determined by creating a standard graph employing triphenylformazon (TPF) as a reference. The enzyme activity was then quantified as micrograms of TPF released per gram of soil per hour. The soil organic carbon was analyzed by the protocol stated by [27]. The microbial biomass carbon was determined by the fumigation-incubation technique described by Jenkinson and Ladd [2] and is expressed as  $\mu\text{g}$  per gram of soil. Brookes *et al* [7] outlined the protocol used by estimating soil microbial biomass nitrogen by chloroform fumigation and indicated as  $\mu\text{g}$  of nitrogen per gram of soil. Anderson [1] outlined the method for determining soil respiration activity. The respiratory activity of the soil samples was determined by collecting and quantifying the  $\text{CO}_2$  evolved from a fixed quantity of incubated soil in standard alkali. According to Brookes [6], soils were classified into three categories *viz.* low, medium, and high based on indicators of soil biological properties. The biological fertility index was determined by the score assigned to the biological fertility index. Thematic maps, illustrating the soil of five agroecological units, were produced using ArcGIS software.

### **3. Generation of maps using geographic information systems**

Using Geographic Information Systems (GIS), a geo-referenced thematic map of the biological fertility index for five agroecological units (AEUs) was created in ArcGIS. The map illustrates the spatial distribution of the relative biological fertility index across wetland soils in various AEUs of southern Kerala were presented in Fig 1.



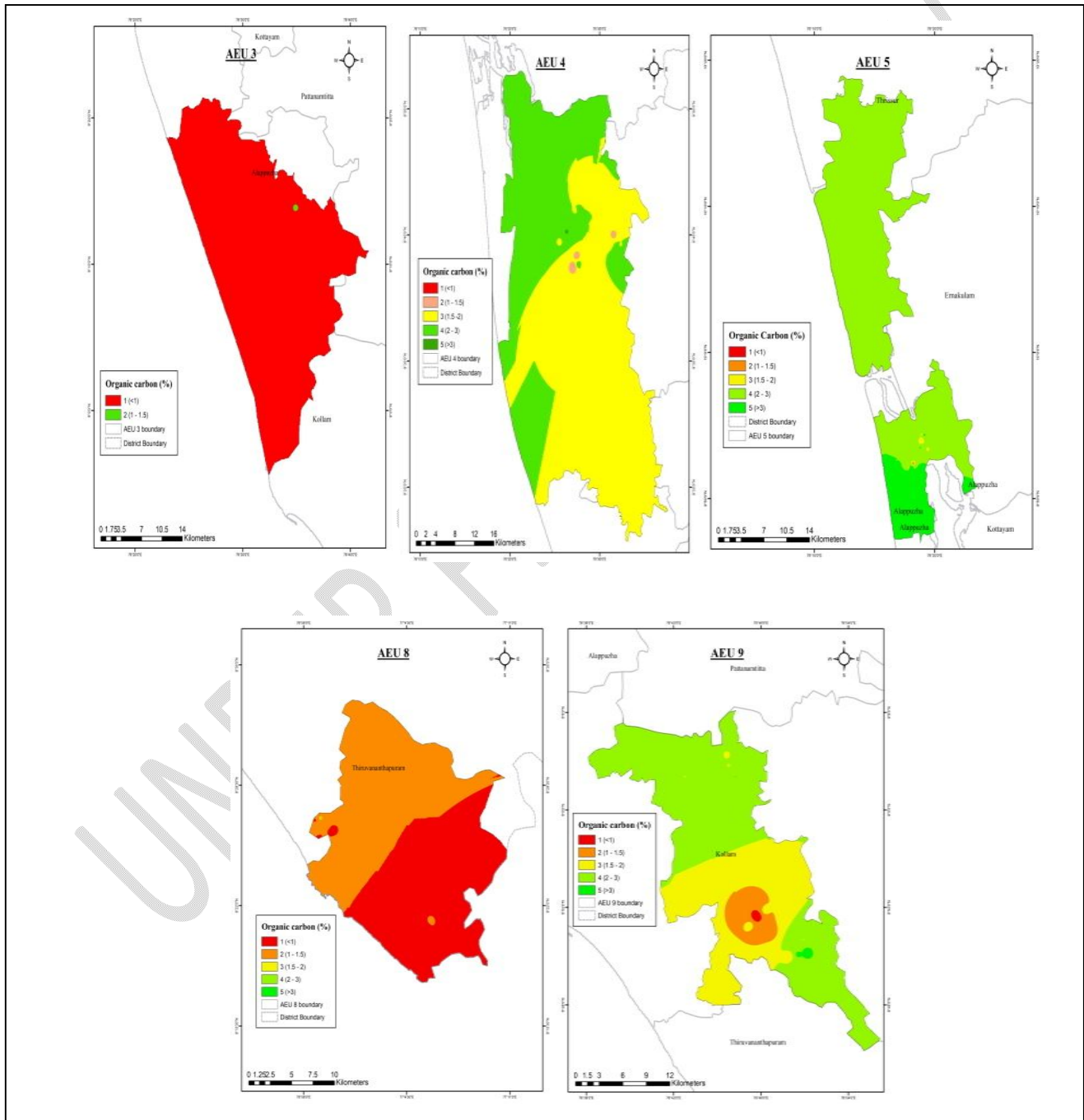
**Fig 1: Location map of study area different AEU**

## **4. Results and discussion**

### **4.1. Organic carbon**

Soil samples were collected from 20 locations in different Agricultural Ecological Units (AEUs). The highest mean value of organic carbon was recorded in AEU 5 (3.03 %), followed by AEU 4 (2.19 %), AEU 9 (2.01%), AEU 8 (1.01 %), and AEU 3 (0.60 %). Organic carbon content ranged from 0.21 to 0.98 in AEU 3 indicating that low to medium organic carbon, 1.00 to 3.14 in AEU 4 was medium to high organic carbon content, 1.00 to 6.22 in AEU 5 showed medium to high organic carbon content, 0.52 to 3.38 in AEU 9, the organic carbon content was from medium to high range, and 0.47 to 1.86 in AEU 8 it was varied from low to medium organic carbon content Fig 2. The low organic carbon content in AEU 3 is attributed to its lateritic soil type and sandy texture. High temperatures and heavy rainfall in this region accelerate the decomposition of organic matter, thereby reducing organic carbon content. Conversely, AEU 4 predominantly features high organic carbon content (>1.5%), largely due to the abundance of partially decomposed fossil woods and roots at various stages of decomposition. The high organic carbon status is also due to the slow decomposition rate of large amounts of organic matter under flooded anaerobic conditions [25]. AEU 5, characterized

by Pokkali soils, is known for its high fertility and acid saline conditions, along with high organic carbon content. This is likely due to the presence of partially decomposed roots and other organic materials [4]. In AEU 9, the accumulation of organic matter is attributed to leaf litter, plant residues, and root biomass, which enrich the soil. The slow decomposition rates in anaerobic conditions further contribute to the high organic matter levels. AEU 8 has medium organic carbon content, with a moderate quantity of dry matter and a range of major and minor nutrients being added to the soil [2, 23].



**Fig 2: Spatial distribution of soil organic carbon of AEU 3, 4, 5, 8 and 9.**

## 4.2. Dehydrogenase

Dehydrogenase plays a key role in the biological oxidation of soil organic matter, and its activity is used as an indicator of microbial activity in the soil. The range of dehydrogenase activity was 290.94 to 991.56 in AEU 5 with the highest mean value were (682.54  $\mu\text{g TPF g}^{-1} \text{hr}^{-1}$ ) followed by a range 121.89 to 888.68 in AEU 4 with a mean value of (593.01  $\mu\text{g TPF g}^{-1} \text{hr}^{-1}$ ), 177.85 to 355.48 in AEU 9 with mean value (242.93  $\mu\text{g TPF g}^{-1} \text{hr}^{-1}$ ), 38.75 to 155.25 in AEU 3 with the mean value (95.08  $\mu\text{g TPF g}^{-1} \text{hr}^{-1}$ ) and the lowest activity was AEU 8 with mean value (76.74  $\mu\text{g TPF g}^{-1} \text{hr}^{-1}$ ) Fig 3. Unnikrishnan and Sankar [25] reported that dehydrogenase activity is highly correlated with the organic carbon content in soil. Higher levels of organic matter can provide enough substrate to support greater microbial biomass, which in turn leads to increased enzyme production [28]. Zhang *et al* [29] found that variations in microbial community composition can significantly influence soil enzyme activities, including dehydrogenase, thereby affecting organic matter decomposition and nutrient cycling. This highlights the need to consider microbial diversity and enzyme activity measurements for a more comprehensive understanding of soil health.

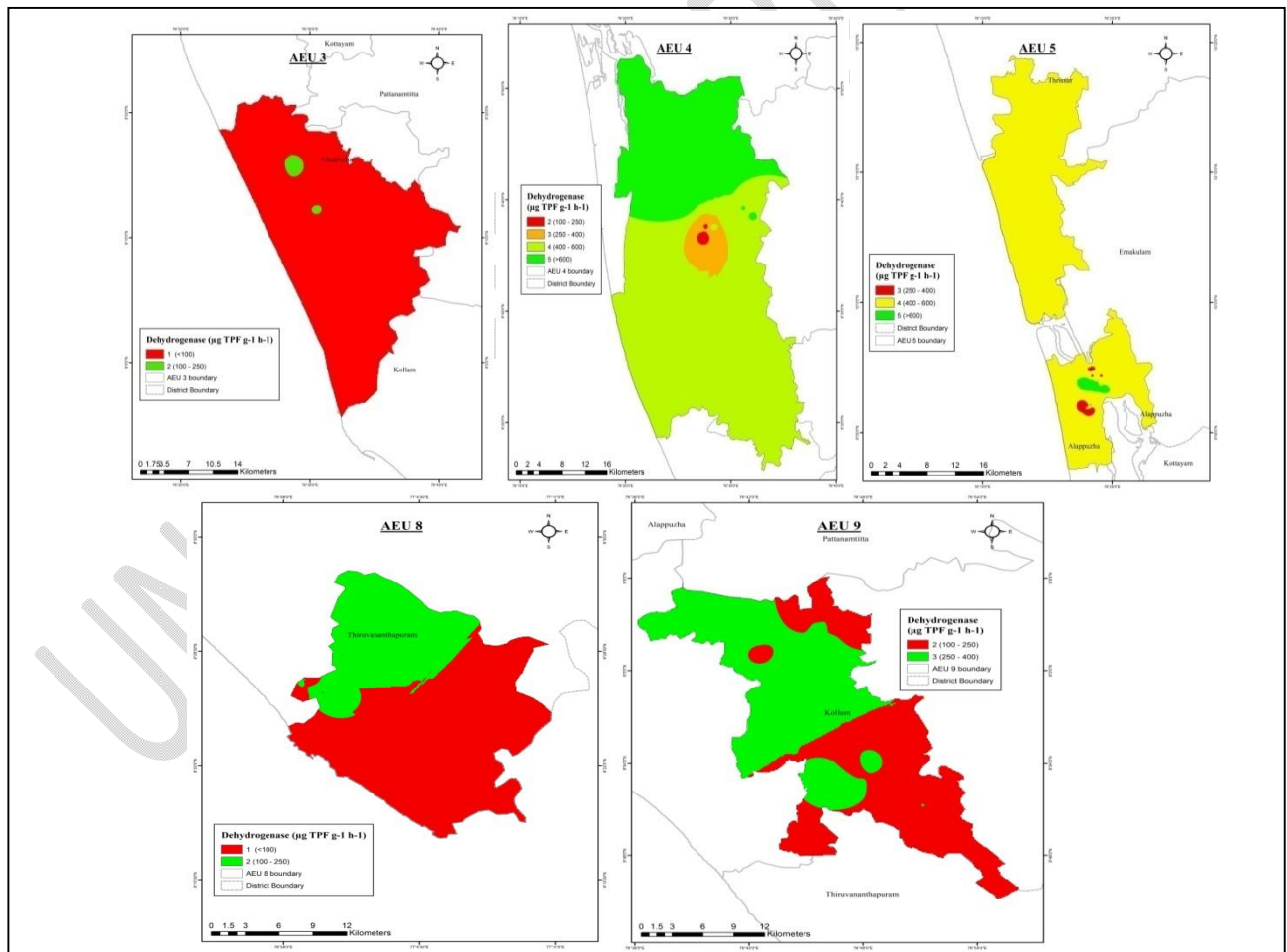


Fig 3: Spatial distribution of soil dehydrogenase activity of AEU 3, 4, 5, 8 and 9.

### 4.3. Microbial biomass carbon

The mean value of microbial biomass carbon (MBC) was highest in AEU 5 (628.57  $\mu\text{g g}^{-1}$  of soil), followed by AEU 4 (429.49  $\mu\text{g g}^{-1}$  of soil), AEU 9 (435.79  $\mu\text{g g}^{-1}$  of soil), AEU 3 (208.66  $\mu\text{g g}^{-1}$  of soil), and lowest in AEU 8 (163.65  $\mu\text{g g}^{-1}$  of soil). The MBC values ranged from 102.54 to 280.26 in AEU 3, 255.25 to 699.15 in AEU 4, 251.36 to 976.38 in AEU 5, 103.14 to 675.28 in AEU 9, and 33.16 to 384.49 in AEU 8 Table 1. Joseph (2014) reported that microbial biomass carbon in Pokkali soil varied from 50.12  $\text{mg kg}^{-1}$  to 658.52  $\text{mg kg}^{-1}$ . Soil microbial biomass is highly sensitive to even slight changes in the organic matter content, which directly serves as an energy source. There is a positive correlation between organic carbon and microbial biomass carbon [14]. Liao *et al* [15] found that MBC increases with organic inputs, especially in soils under agricultural use. Sahoo *et al* [21] confirmed that organic amendments improve microbial biomass, enhancing long-term soil productivity and resilience.

### 4.4. Microbial biomass nitrogen

The microbial biomass nitrogen was found to be highest mean value at AEU 5 (197.30  $\mu\text{g g}^{-1}$  of soil) and varied from 116.24 to 330.04 followed by AEU 9 (160.50  $\mu\text{g g}^{-1}$  of soil) and the range from 57.36 to 270.11, AEU 4 (146.07  $\mu\text{g g}^{-1}$  of soil) varied from 79.61 to 236.08, AEU 3 (87.30  $\mu\text{g g}^{-1}$  of soil) from 48.24 to 175.65 and lowest MBN was noticed in AEU 8 (57.17  $\mu\text{g g}^{-1}$  of soil) varied from 35.58 to 89.22 Table 1. These results align with recent studies showing that factors like nitrogen addition and organic carbon content significantly affect microbial biomass nitrogen, which is crucial for soil fertility and plant productivity [28]. This variability in microbial biomass nitrogen values guide specific soil management practices to enhance fertility in less productive zones like AEU 8. Introducing specific soil management practices will significantly improve fertility in zones like AEU 8. By adjusting inputs such as organic amendments, nitrogen sources, and microbial inoculants, it is possible to enhance microbial biomass and nutrient cycling, enhancing soil health and productivity.

**Table 1.** Mean value of microbiological parameters in various **agroecological** units

	<b>OC (%)</b>	<b>Range</b>	<b>Dehydrogenase (<math>\mu\text{gTPF g}^{-1} \text{hr}^{-1}</math>)</b>	<b>Range</b>	<b>Microbial biomass carbon (<math>\mu\text{g g}^{-1}</math> of soil)</b>	<b>Range</b>	<b>Microbial biomass nitrogen (<math>\mu\text{g g}^{-1}</math> of soil)</b>	<b>Range</b>	<b>Soil respiration (<math>\text{mg g}^{-1}</math> of soil)</b>	<b>Range</b>
<b>AEU 3</b>	0.56	0.21 to 0.98	95.08	38.75 to 155.25	208.66	102.54 to 280.26	87.30	48.24 to 175.65	1.14	0.14 to 2.26
<b>AEU 4</b>	2.19	1.00 to 3.14	593.01	121.89 to 888.68	429.49	255.25 to 699.15	146.07	79.61 to 236.08	4.81	2.88 to 6.78
<b>AEU 5</b>	3.03	1.86 to 6.22	682.54	290.94 to 991.56	628.57	251.36 to 976.38	197.30	116.24 to 330.04	7.76	5.28 to 11.01
<b>AEU 8</b>	1.01	0.47 to 1.86	76.74	44.25 to 157.26	163.65	33.16 to 384.49	57.17	35.58 to 89.22	1.61	1.06 to 2.78
<b>AEU 9</b>	2.01	0.52 to 3.38	242.93	177.85 to 355.48	435.79	103.14 to 675.28	160.50	57.36 to 270.11	3.51	1.87 to 5.71

#### 4.5. Soil respiration

Soil respiration, which refers to the CO<sub>2</sub> produced by the biological activity of soil organisms, is a significant component of the global carbon cycle (Phillips *et al.* 2015). The highest mean value of soil respiration was observed in AEU 5 (7.76 mg g<sup>-1</sup> of soil), with a range from 5.28 to 11.01. This was followed by AEU 4 (4.81 mg g<sup>-1</sup> of soil) with a range from 2.88 to 6.78, AEU 9 (3.51 mg g<sup>-1</sup> of soil) ranging from 1.87 to 5.71, AEU 3 (1.14 mg g<sup>-1</sup> of soil) ranging from 0.14 to 2.26, and the lowest was recorded in AEU 8 (1.61 mg g<sup>-1</sup> of soil) with a range from 1.06 to 2.78. Soil respiration rates typically increase with ambient temperature, as higher temperatures accelerate carbon cycling processes [24]. The higher soil respiration rates in AEU 5 can be attributed to potentially warmer temperatures and sufficient moisture, providing a favorable environment for microbial growth and activity. Conversely, the lower rates in AEU 3 and 8 may reflect suboptimal conditions, possibly linked to soil compaction, nutrient deficiencies, or inadequate organic matter. These results were supported by the findings [16].

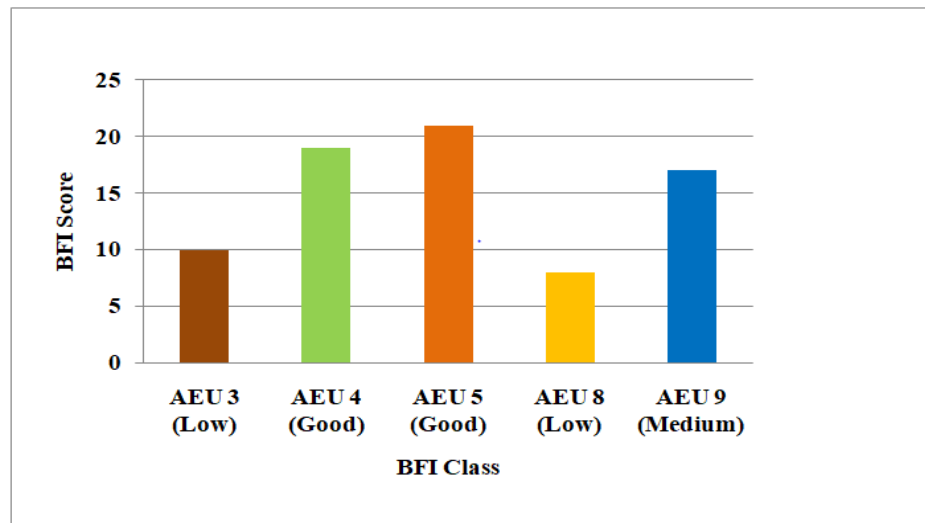
#### 5. Biological fertility index

The Biological Fertility Index (BFI) is a metric used to evaluate the potential fertility of soil. It takes into account various biological factors that contribute to soil fertility, including the presence and activity of soil microorganisms, organic matter content, and the soil's ability to support plant growth [8]. The Biological Fertility Index (BFI) is an evaluation system that measures soil health and fertility by considering several key parameters: soil organic carbon, soil respiration, dehydrogenase, soil microbial biomass carbon and soil microbial biomass nitrogen. Each parameter is divided into five intervals, with each interval assigned a score from 1 to 5. These scores are based on findings from previous research [6,26]. The overall biological fertility is determined by summing the scores of all parameters, which then classifies the soil into different levels of biological fertility, as illustrated in [Tables 2 and 3](#).

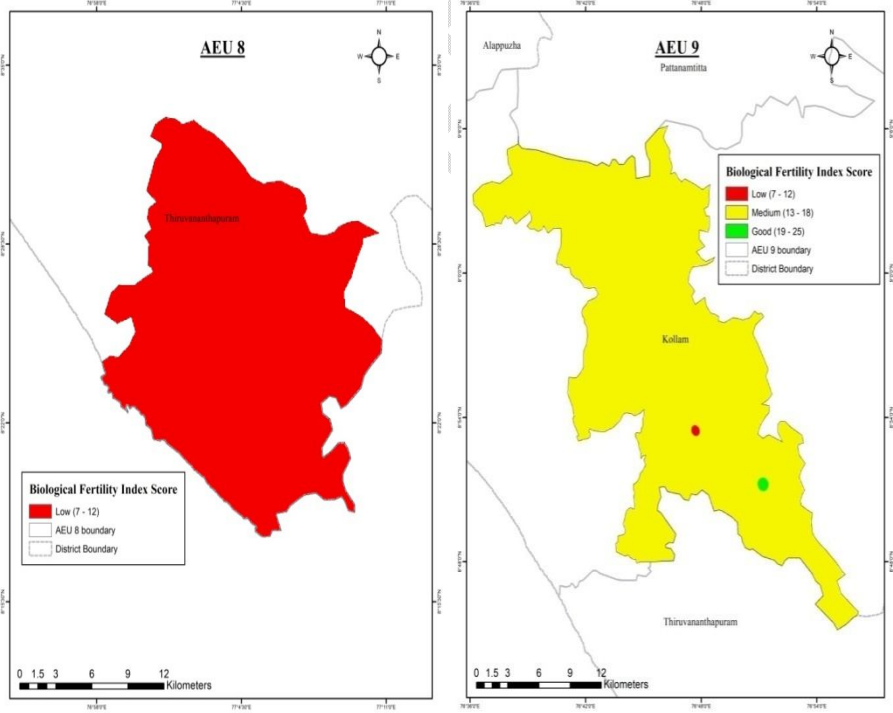
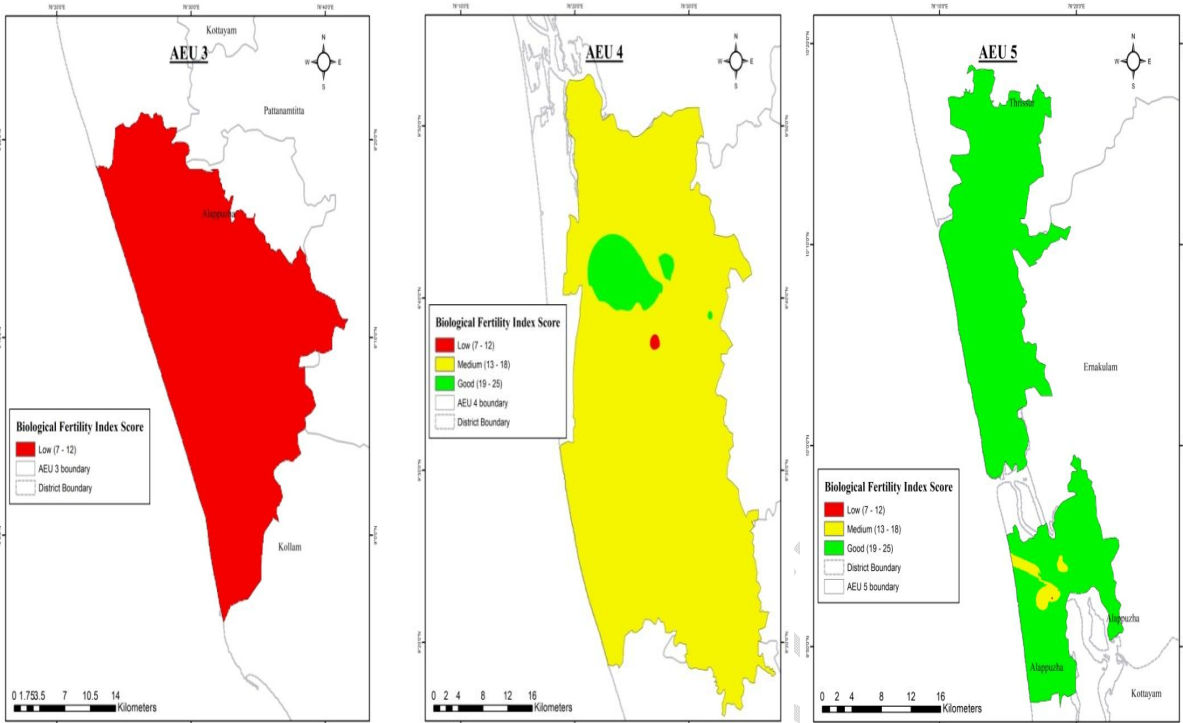
Based on the Biological Fertility Index (BFI) scores, the selected [agroecological](#) zones (AEUs) in the study were classified as follows: AEU 3 had a BFI score of 10, placing it in the Low BFI class. AEU 4 had a BFI score of 19, classifying it as Good biological fertility. AEU 5 had a BFI score of 21, indicating Very Good biological fertility. AEU 8, with a BFI score of 8, was categorized as Low. AEU 9, with a BFI score of 17, placed into the Medium fertility class [Fig 4 and Fig 5](#). The highest BFI scores were attributed to the high organic matter content and microbial activity in the soil.

[The study on the biological characterization of geo-referenced soil samples from Southern Kerala provides crucial insights into the soil microbiological health across various agroecological units \(AEUs\) in a rice-growing region. By measuring parameters like dehydrogenase activity, organic carbon content, microbial biomass, and soil respiration, the research offers a detailed understanding of soil fertility. Notably, AEU 5 \(Pokkali soil\) exhibited the highest biological fertility, followed by AEU 4 \(Kari soil\), underscoring the significance of organic carbon and microbial activities in enhancing soil productivity. These findings are](#)

essential for improving rice cultivation practices and tailoring soil management strategies specific to each AEU, aiming to sustain productivity in ecologically varied zones [19].



**Fig.4. Biological fertility index (BFI) scores and classifications for various agro-ecological units**



**Fig.5. Spatial distribution of soil dehydrogenase of AEU 3, 4, 5, 8 and 9**

**Table 2. Biological fertility index score for the interval value of different parameters**

Parameter	Scores				
	1	2	3	4	5
Organic carbon	<1.0	>1.0 to <1.5	>1.5 to >2.0	>2.0 to <3.0	>3.0
Dehydrogenase	<100	>100 to <250	>250 to <400	>400 to <600	>600
Microbial biomass carbon	<100	>100 to <200	>200 to <300	>300 to <400	>400
Microbial biomass nitrogen	<50	>50 to <100	>100 to <150	>150 to <200	>200
Soil respiration	<5	>5 to <10	>10 to <15	>15 to <20	>20

**Table 3. Categories of Biological Fertility Index**

Biological fertility class	Low	Medium	Good	Very good
Biological fertility scores	5-12	13-18	19-25	>25

## 6. Correlation analysis

Pearson correlation analysis across Agroecological units shows a strong positive correlation between dehydrogenase activity, microbial biomass carbon, microbial biomass nitrogen, and soil respiration with organic carbon content. As organic carbon increases, these microbiological parameters also rise, emphasizing its role in soil health and microbial activity. Blue circles represent positive correlations, brown circles indicate negative ones, and circle size reflects correlation strength (r), with significant correlations at ( $p \leq 0.5$ ). Fig. 6.



**Fig.6. Pearson correlation correlogram of various microbiological parameters across Agro-Ecological Units**

## 7. Conclusion

The present study concluded that Agro-ecological Zones AEU 5 was the highest biological fertility index, followed by AEU 4, AEU 9, AEU 3, and AEU 8. Soil biological properties can be improved through various practices that enhance the activity and diversity of soil microorganisms, promote healthy plant growth, and maintain soil structure. Some of the effective strategies like using organic amendments like manure application, crop management practices like crop rotation, and cover cropping, nutrient management like balanced fertilization, green manuring, etc.

### Disclaimer (Artificial intelligence)

#### Option 1:

Author(s) hereby declare that NO generative AI technologies such as Large Language Models (ChatGPT, COPILOT, etc.) and text-to-image generators have been used during the writing or editing of this manuscript.

## References

1. Anderson JP. Soil respiration. *Methods of soil analysis: part 2 chemical and microbiological properties*. 1982 Feb 1;9:831-71.
2. Aparna RA, Rajasree G, Pillai PS, Isaac SR, Stephen R, Aparna B, Gopinath PP. Assessment of Nutrient Status in the Cassava Growing Tracts of Southern Laterites (Agro Ecological Unit 8), Kerala, India. *International Journal of Environment and Climate Change*. 2023 Nov 18;13(11):3356-61.
3. Azcón-Aguilar C, Barea JM. Nutrient cycling in the mycorrhizosphere. *Journal of soil science and plant nutrition*. 2015 Jun;15(2):372-96.
4. Beena S, George T K, Ashique Binitha N K. Assessment of Microbial Properties of Pokkali Soil in Kerala, *India.Int.J.Curr.Microbiol.App.Sci*, 2017 Dec 6(12): 1964-1967. <https://doi.org/10.20546/ijcmas.2017.612.224>
5. Bhupenchandra I, Devi SH, Basumatary A, Dutta S, Singh LK, Kalita P, Bora SS, Devi S, Saikia A, Sharma P, Bhagowati S. Biostimulants: Potential and prospects in agriculture. *International Research Journal of Pure and Applied Chemistry*. 2020 Sep 3;21(14):20-35.
6. Brookes PC. The use of microbial parameters in monitoring soil pollution by heavy metals. *Biology and Fertility of soils*. 1995 Mar;19:269-79.
7. Brookes PC, Landman A, Pruden G, Jenkinson DS. Chloroform fumigation and the release of soil nitrogen: a rapid direct extraction method to measure microbial biomass nitrogen in soil. *Soil biology and biochemistry*. 1985 Jan 1;17(6):837-42.

8. Casida Jr LE, Klein DA, Santoro T. Soil dehydrogenase activity. *Soil science*. 1964 Dec 1;98(6):371-6.
9. Francaviglia R, Renzi G, Ledda L, Benedetti A. Organic carbon pools and soil biological fertility are affected by land use intensity in Mediterranean ecosystems of Sardinia, Italy. *Science of the Total Environment*. 2017 Dec 1;599:789-96..
10. Gao Y, Li M, Xue J, Liu Y. Evaluation of effectiveness of China's carbon emissions trading scheme in carbon mitigation. *Energy Economics*. 2020 Aug 1;90:104872.
11. Gurjar G, Swami S, Telkar S, Meena N, Kant K, Kumar R. Soil biological properties and their importance in agricultural production. *Biomolecule reports*. 2017;4.
12. Jenkinson DS, Ladd JN. Microbial biomass in soil: measurement and turnover. *Soil biochemistry*. 1981 Apr 1;5(1):415-71.
13. Joseph C. Assessment of soil quality of acid saline Pokkali soils under different land uses. M. Sc.(Ag) thesis, Kerala Agricultural University, Thrissur. 101p. 2014.
14. Kamala Haripal KH, Sunada Sahoo SS. Microbial biomass carbon, nitrogen, and phosphorus dynamics along a chronosequence of abandoned tropical agroecosystems.
15. Liao S, Nie X, Liao W, Liu Y, Zeng A, Li Z. Contribution and control of microbial necromass carbon in wetland soils. *Aquatic Sciences*. 2024 Jul;86(3):81.
16. Liu Y, Men M, Peng Z, Chen HY, Yang Y, Peng Y. Spatially explicit estimate of nitrogen effects on soil respiration across the globe. *Global Change Biology*. 2023 Jul;29(13):3591-600.
17. Manral V, Bargali K, Bargali SS, Karki H, Chaturvedi RK. Seasonal dynamics of soil microbial biomass C, N and P along an altitudinal gradient in central Himalaya, India. *Sustainability*. 2023 Jan 14;15(2):1651.
18. Moeskops B, Buchan D, Sleutel S, Herawaty L, Husen E, Saraswati R, Setyorini D, De Neve S. Soil microbial communities and activities under intensive organic and conventional vegetable farming in West Java, Indonesia. *Applied Soil Ecology*. 2010 Jun 1;45(2):112-20.
19. Olivares BO, Lobo D, Cortez A, Rodriguez MF, Rey JC. Socio-economic characteristics and methods of agricultural production of indigenous community Kashaama, Anzoategui, Venezuela.
20. Phillips CL, McFarlane KJ, LaFranchi B, Desai AR, Miller JB, Lehman SJ. Observations of  $^{14}\text{CO}_2$  in ecosystem respiration from a temperate deciduous forest in Northern Wisconsin. *Journal of Geophysical Research: Biogeosciences*. 2015 Apr;120(4):600-16.
21. Sahoo UK, Singh SL, Gogoi A, Kenye A, Sahoo SS. Active and passive soil organic carbon pools as affected by different land use types in Mizoram, Northeast India. *PloS one*. 2019 Jul 30;14(7):e0219969.
22. Salazar S, Sánchez LE, Alvarez J, Valverde A, Galindo P, Igual JM, Peix A, Santa-Regina I. Correlation among soil enzyme activities under different forest system management practices. *Ecological Engineering*. 2011 Aug 1;37(8):1123-31.

23. Sheeba SS, Pillai PS, Mini V. Assessment and rating of available nutrient status of rice soil in the southern laterites (AEU 8) of Kerala. *Journal of Pharmacognosy and Phytochemistry*. 2019;8(2S):269-72.
24. Tang J, Bradford MA, Carey J, Crowther TW, Machmuller MB, Mohan JE, Todd-Brown K. Temperature sensitivity of soil carbon. *Ecosystem consequences of soil warming*. 2019 Jan 1:175-208.
25. Unnikrishnan R, Sankar J. Electro Chemical and Biological Characterization of Kari Soil and Kole Land.
26. Vance ED, Brookes PC, Jenkinson DS. An extraction method for measuring soil microbial biomass C. *Soil biology and Biochemistry*. 1987 Jan 1;19(6):703-7.
27. Walkley A, Black IA. An examination of the Degtjareff method for determining soil organic matter, and a proposed modification of the chromic acid titration method. *Soil science*. 1934 Jan 1;37(1):29-38.
28. Yuan BingCheng YB, Yue DongXia YD. Soil microbial and enzymatic activities across a chronosequence of Chinese pine plantation development on the Loess Plateau of China.
29. Zhang H, Luo G, Wang Y, Fei J, Xiangmin R, Peng J, Tian C, Zhang Y. Crop rotation-driven change in physicochemical properties regulates microbial diversity, dominant components, and community complexity in paddy soils. *Agriculture, Ecosystems & Environment*. 2023 Feb 28;343:108278.
30. Zhao B, Chen J, Zhang J, Qin S. Soil microbial biomass and activity response to repeated drying–rewetting cycles along a soil fertility gradient modified by long-term fertilization management practices. *Geoderma*. 2010 Dec 15;160(2):218-24.