

# Agricultural valorization of treated effluent from Korhogo wastewater treatment plant

---

## ABSTRACT

**Aims:** The main objective is to show that treated wastewater from Korhogo's wastewater treatment plant could be used for irrigation and fertilization in agriculture.

**Study design:** Characterization of outlet treated wastewaters has been firstly done. Then their suitability for irrigation has been determined and finally their fertilizing capacity has been assessed.

**Place and Duration of Study:** Department of Geosciences, Korhogo's wastewater treatment plant and laboratory. Sampling, analyses were carried out in January 2023, before agricultural field implementation started in February 2023

**Methodology:** Firstly, Physico-chemical and microbiological analyses, allowed characterization of outlet treated wastewaters. A determination of their suitability for irrigation was then done through Sodium Adsorption Ratio calculation and Water Classification with Diagram of Richards. An assessment of their fertilizing capacity was finally carried out using these waters for irrigating and fertilizing crop plots (3x2 m), consisting of determining firstly their biodegradability index, then nutrient contents (Nitrogen, Phosphorus and potassium), and influence on crop development and yield.

**Results:** Results show that several parameters meet standards for discharge of treated wastewater except total nitrogen, Suspended matters and total phosphorus (67.67 mg/l, 271.33 mg/l and 18.30 mg/l). SAR value=3.78 and C3S1 class indicate that these treated effluents can be used for irrigation without salinization risk. As fertilizer, treated effluents brought to crops respectively 603 kg/ha of nitrogen, 162 kg/ha of phosphorus and 99 kg/ha of potassium for maize; and 368.5 kg/ha of nitrogen, 99 kg/ha of phosphorus and 60.5 kg/ha of potassium respectively for Okra. A yield of 12.2 kg of fresh maize and 3.15 kg of fresh okra was obtained for the plot irrigated by treated effluents, compared with 4.80 kg of fresh maize and 0.36 kg of fresh okra for the plot irrigated by well water.

**Conclusion:** This study has shown that outlet treated wastewater from Korhogo's wastewater treatment plant is suitable for crops irrigation, contains sufficient nutrients enhancing crops development and yield.

*Keywords: Korhogo, treated wastewater, valorization, agriculture, maize, Okra.*

## 1. INTRODUCTION

The UN's 2019 report on Food Security and Nutrition in the World, indicated the rising hunger in almost all African subregions. This makes Africa the area with the highest undernourished population, with nearly 20% according to [1]. To resolve this problem and ensure food security, it is imperative to increase agricultural production. This involves using agricultural inputs such as chemical fertilizers to improve soil fertility and agricultural productivity. However, the high cost of these inputs, combined with the significant lack of financial of farmers, constitutes a major impediment to agriculture development in Africa, not to mention the adverse effects of these fertilizers on the environment, particularly on the aquatic environment. Therefore, low-cost, efficient and environmentally friendly alternatives should then be found to improve agricultural output in

Africa. Thus, several studies have been carried out to improve agricultural production, precisely that of [2] on the impact of manure and crop residues management on soil productivity in savannahs. In the other hand, one of the most promising solutions could be found in widely available wastewater in septic systems in most cities in sub-Saharan Africa [3]. Indeed, self-contained sanitation facilities, such as septic tanks, latrines, public toilets, are devices that store huge amounts of sewage sludge [4]. The sludge shall be drained, transported to appropriate sludge treatment plants, or appropriate treatments applied. At these stations, sludges follows several treatment steps in order to separate solid particles from liquid fraction. The solid fraction is collected and then dried to remove most of pathogens and liquid phase, Solid fraction is collected and then dried to remove most of the pathogens. Liquid phase, after several so-called aerobic and anaerobic steps, is released to the environment downstream of treatment plant [5]. These 2 treatment by-products mentioned above, which are proven to be available throughout the year, would contain nutrients necessary for plant growth [6]. Their use in agriculture could contribute not only to improving agricultural productivity, but also to recycling water (saving on water resources) and nutrients, and above all to reduce environmental impact of these sludges [6]. In Côte d'Ivoire, the treatment of waste sludge has been the subject of particular attention in recent years through the construction of several treatment plants, including that of Korhogo (pilot station). By-products of sludge treatment which are dried sludges and treated effluents are not exploited or valorised[7]. It is in this context that the present study entitled "Agricultural valorisation of treated effluents from Korhogo wastewater treatment plant" was initiated. The main objective of this work is to show that the treated effluent from the town of Korhogo can be used in agriculture as fertilizer. Specific objectives are the following:

- Analyze treated wastewaters characteristics from Korhogo wastewater treatment plant
- Determine the convenience of treated wastewater for irrigation
- Assess the fertilizing capacity of treated effluents.

## 2. MATERIAL AND METHODS

### 2.1. Material

#### 2.1.1. Water and data analysis

Two types of measurement were carried out: in-situ measurements (temperature, pH and conductivity) and laboratory measurements (phosphates, nitrates, nitrites, MES, etc...). Measurements of PH and Temperature were carried out using a multi-parameter HACH 1000 apparatus. Electrical conductivity was measured with a portable 3310 SET1 conductivity meter. A HACH/DR 1900 spectrophotometer was used to analyse chemical parameters in the laboratory. Microbiological analysis results have been done by the laboratory of National Sanitation and Drainage Office (ONAD). Data analysis hardwares includes SAR/Conductivity cross-index table of Richards and Origin 8.0 software.

#### 2.1.2. Agricultural site implementing materials

Two vegetal species were used in this study as shown in Figure 1. First plant used is a variety of okra (*Abelmoschus esculentus*) F1 RAFIKI hybrid from Technisem structure. This variety growing cycle is between 3 and 4 months. Second plant is an improved maize variety (*Zea mays*) called N'GOUACHIA, which has a growing cycle about 55 days.



## Figure 1: Okra and Corn Seeds

### 2.2. Methods

#### 2.2.1. Characteristics analysis of treated wastewater from Korhogo station

Three sampling campaigns for physico-chemical and microbiological analyses were carried out in January (dry period), before agricultural site implementation in February. Water sampling was carried out at aerobic tank exit. Two types of measurement were carried out: in-situ measurements (temperature, pH and conductivity) and laboratory measurements (phosphates, nitrates, nitrites, suspended matters, etc...). Methods of physico-chemical and microbiological analysis of parameters are summarized in Table 1.

Table 1: Parameters and methods of treated effluents analysis

Parameters	Method references	Methods
PH	NFT 90-008	Electrochemical measurement with HACH multi-parametric probe glass electrode.
Conductivity	AFNOR 90-031.	Portable conductivity meter type 3310 SET1 associated with a diving electrode.
Temperature	NFT 90-100	Measurement by a HACH multi-parametric probe.
Phosphates	NF EN ISO 6878	Phosphorus determination by the ammonium molybdate spectrometric method.
Ammoniums	NFT 90-015-2	Formation in alkaline medium of an indophenol-type compound and spectrometric measurement at 630 nm.
Nitrates	ISO 7890-3	Formation of sodium paranitro-salicylate, colored yellow and spectrometric measurement at 415 nm.
Nitrites	NFT EN 26777	Formation in acidic medium of a purple colored complex and spectrometric measurement at 543nm.
Suspended matters	NF EN 872	Glass fiber filtration and gravimetry
Total Phosphorus	NF EN ISO 6878	Decomposition and determination of phosphorus by the ammonium molybdate spectrometric method.
Total Nitrogen	NF EN 25663	Decomposition and dosage of nitrogen.
COD	ISO 15705	Determination of chemical oxygen demand (closed tube method)
BOD5	METHOD Oxi Top	Mercury-free respirometric measurement.
TOC	NF EN 1484	Oxidation by combustion and dosage by infrared spectrometry.
Fecal coliforms	NF EN ISO 9308-1	Fecal coliform count.
Helminths	SAF Method	Use of the sodium-acetate-acetic acid-formaldehyde solution.
Calcium	AFNOR T90-016	Calcium determination – EDTA titrimetry method
Magnesium	AFNOR T90-003	Determination of total magnesium concentration
Sodium	Flame spectrometer	Heating metal ions in a sample to detect silty emissions using a detector
Potassium	Flame spectrometer	Heating metal ions in a sample to detect silty emissions using a detector

## 2.2.2. Determination of treated wastewater convenience for irrigation

Determination of treated wastewater convenience for irrigation was based on the capacity of soil salinization and alkalisation by these treated wastewaters according to results of pH, conductivity and sodium absorption ratio (SAR). The SAR reports the ratio of sodium, alkaline earth, and conductivity, and is calculated from equation 1 below, proposed by Richard [8]. The SAR/Conductivity cross-index was used to determine treated effluents class based on Table 2.

$$\text{Equation 1 : } \mathbf{SAR} = \frac{\mathbf{Na^+}}{\sqrt{\frac{\mathbf{Ca^{2+} + Mg^{2+}}}{2}}}$$

Table 2:Water classes based on SAR/Conductivity cross-index

RAS/Conductivity	Indication
C1S1	Water usable for most crop species and soil
C1S2	Usable water for most crop species soil must be well drained and leached
C1S3	soil must be well prepared, well drained, well leached, addition of organic matter relative Na content can be improved by the addition of gypsum
C1S4	Water difficult to use in poorly permeable soils soil must be well prepared, very well drained and leached, addition of organic matter relative Na content can be improved by the addition of gypsum
C2S1	Water suitable for plants with a slight salt tolerance
C2S2	Water suitable for plants with a slight salt tolerance Coarse or organic soil with good permeability
C2S3	Water suitable for plants that have some salt tolerance Coarse, well-prepared soil (good drainage, good leaching, addition of organic matter) Periodic addition of gypsum may be beneficial
C2S4	Water generally not suitable for irrigation
C3S1	Water suitable for plants that have good salt tolerance Well-prepared soil (good drainage) Periodic monitoring of salinity changes
C3S2	Water suitable for plants that have good salt tolerance Coarse or organic soil with good permeability, good drainage Periodic monitoring of salinity changes Periodic addition of gypsum may be beneficial
C3S3	Salt tolerant species Very permeable and well-drained soil
C3S4	Water not suitable for irrigation
C4S1	Water not suitable for irrigation under normal conditions Can be used if the species has good tolerance to salinity and the soil is particularly well drained

C4S2	Water not suitable for irrigation under normal conditions Can be used if the species has very good tolerance to salinity and the soil is particularly well drained
C4S3	Water not suitable for irrigation
C4S4	Water not suitable for irrigation

### 2.2.3. Assessment of treated wastewater fertilizing capacity

Fertilizing capacity was determined by assessing treated effluents biodegradability, calculating nutrient content (nitrogen, phosphorus and potassium) delivered to crops through watering with treated wastewater and evaluating effect of treated effluents use on crops vegetative development and yield.

Treated effluents biodegradability was determined by coefficient K, which is COD/BOD5 ratio [9] and value of C/N ratio. According to [10], level of biodegradability is defined according to values of coefficient K indicated below.

$K < 2,5$  readily biodegradable effluents;

$3 < K < 5$  moderately biodegradable effluents;

$K > 5$  effluents which is difficult to biodegrade.

[11] define C/N as an indicator of organic matter evolution degree, i.e. its ability to decompose more or less rapidly in soil. A high C/N ratio indicates slow decomposition rates of organic matter, while a low C/N ratio suggests rapid decomposition rates.

$C/N < 15$  : Nitrogen production, the rate of decomposition increases, peaking at a C/N ratio of 10

$15 < C/N < 20$  : need for nitrogen covered to allow good decomposition of the carbonaceous material,

$C/N > 20$  : Not enough nitrogen to allow carbon decomposition (there is competition between uptake by plants and reorganization of organic matter by soil microorganisms, this is the phenomenon of "nitrogen hunger"). Nitrogen is then taken from the reserves of the soil. Mineralization is slow and only releases a small amount of mineral nitrogen to the soil.

Nutrient contents (nitrogen, phosphorus and potassium) in treated effluents were calculated using formula in Equation 2. Values found were then compared to the CNRA recommendation.

$$\text{Equation 2: } T = \frac{C_m \times V \times n}{S} \times N$$

T: Nutrient content Nitrogen, Phosphorus or Potassium (mg/m<sup>2</sup>)

C<sub>m</sub>: Average concentration of each nutrient (N, P, K) supplied to the plant.

V: Volume of watering can

n: Number of watering tower provided to plants per day.

S: Area under cultivation

N: Number of days in the culture cycle

Effect of using treated effluents on crops vegetative development and yield was evaluated through field experiments. Two plots have been set up with a log area of 6 m<sup>2</sup>. Each plot was watered either

by well water (usually used by farmers as water for vegetable crops) or by water from treated effluents. Experiments were carried out on two crops, maize and okra. Maize and okra seeds were planted directly by hand on ridges made with hoe. Distance between lines was 75 cm and 40 cm between seed holes, resulting in 48 seed holes on a ridges. Watering was done twice a day, manually using a watering can of 15 L. Size of each plant was measured weekly during 9 weeks from date of sowing. Plants were treated 3 times throughout the crop cycle with insecticide 'kapaas' to control pests.

### 3. RESULTS AND DISCUSSION

#### 3.1. Characteristics analysis of treated wastewater from Korhogo station

Results of physico-chemical parameters analyses (Table 3) show that pH values (between 8.31 and 9.47) comply with WHO recommended standards (between 6.5 and 9.5) for discharge and reuse of treated effluents. These values, similar to [12] [13] results, would promote easy dissolution of nutrients contained in treated effluents according to [14] [15][16].

Conductivity values range from 1593  $\mu\text{S}/\text{cm}$  to 1998  $\mu\text{S}/\text{cm}$  with a mean value of 1740.27  $\mu\text{S}/\text{cm}$ . These results meet standards for discharge of treated effluents and reuse for agriculture, and are similar to those found by [17] [18] for treated wastewater in Ouagadougou.

For suspended matters, values range from 124 mg/l to 530 mg/l with a mean of 271.33 mg/l. These results exceed WHO recommended values for discharge of treated effluent and for reuse in agriculture. Average is higher than the results of [19] for domestic treated wastewater in the city of Niamey (141 mg/l). This high value of suspended matters may be due to algal growth in the basin before effluent discharge (aerobic or anaerobic) This development may be due to high phosphorus levels in treated wastewater [7]. Such value of suspended matters could affect receiving medium and cause clogging phenomenon of soil, leading to a reduction in the amount of available soluble nutrients for plant roots [13]. Also, it could have adverse consequences for crops because clogging means a reduction of pores in the soil which are spaces used for roots and liquids.

COD, TOC, BOD<sub>5</sub>, Na<sup>+</sup>, Ca<sup>2+</sup>, and Mg<sup>+</sup> mean values are respectively 413 mg/l, 77.20 mg/l, 131 mg/l, 209.63 mg/l, 278.33 mg/l, 129.83 mg/l. These results are consistent with WHO treated wastewater discharge standards. However, mean values for total nitrogen, nitrates, nitrites, ammonium and total phosphorus exceed WHO standards (50 mg/l for nitrogen, 50 mg/l for nitrates, 50 mg/l for nitrites, < 2 mg/l for ammonium and 15 mg/l for total phosphorus). These parameters had mean values of 67.67 mg/l, 186 mg/l, 10.77 mg/l, 27.20 mg/l, and 18.30 mg/l, respectively.

Statistical analysis (Table 3) shows that deviations are high and at level 0.05 sample means are significantly different through the ANOVA test, with  $F=64.99$  and  $\text{Prob}>F=0$ . These values mean that composition of treated wastewater varies significantly from day to day. This could be explained by the difference in wastewater characteristics from diverse septic tanks. Other reason could be the applied treatment which does not depend on physico-chemical and microbiological content of wastewater entering in Korhogo station.

Excessive amount of nitrogen could have adverse environmental impacts. High content of nitrogen can, on the one hand, cause groundwater contamination in highly permeable soil and, on the other hand, delay the maturation of certain crops [20].

High phosphorus content results in the proliferation of algae (green color) in finishing basin [21] and aquatic plants. This can affect development of aquatic wildlife [22] [23]. For microbiological analysis, results show a total coliform content of 3.03.106 CFU/100 ml, fecal coliforms content of 7.73.104 CFU/100 ml and E. Coli content of 1.06.104 CFU/100 ml. These results are higher than standards, which are 1000 CFU/100 ml for these various germs [24]. These values are similar to results of Louaguenouni [25] on monitoring treated wastewater quality of BARAKI treatment station for

agricultural reuse. According to Benemaria et al [21], reuse of such treated wastewater for agriculture, from a bacteriological point of view, must be done carefully.

Table 3: Statistical analysis of physicochemical parameters

	Sample Size	Mean	Standard Deviation	SE of Mean
Nitrites	3	10.772	9.55987	5.51939
pH	3	8.90333	0.58046	0.33513
Conductivity	3	1740.26667	224.29708	129.49798
T°	3	25.46667	2.72091	1.57092
Suspended matters	3	271.33333	224.73392	129.75019
Ammonium	3	27.2	22.27375	12.85976
Total Nitrogen	3	67.66667	50.73789	29.29353
Phosphates	3	24.76667	20.47592	11.82178
Total Phosphorus	3	18.3	5.24214	3.02655
COD	3	413	172.37459	99.52052
TOC	3	77.2	50.21195	28.98988
BOD5	3	131	18.52026	10.69268
Na+	3	19	9.64365	5.56776
Ca <sup>2+</sup>	3	12.01	7.54787	4.35776
Mg <sup>2+</sup>	3	13.33333	11.15049	6.43774
K+	3	11.66667	1.52753	0.88192

	DF	Sum of Squares	Mean Square	F Value	Prob>F
Model	15	8.36E+06	557657.347	64.99279	0
Error	32	274569.438	8580.29495		
Total	47	8.64E+06			

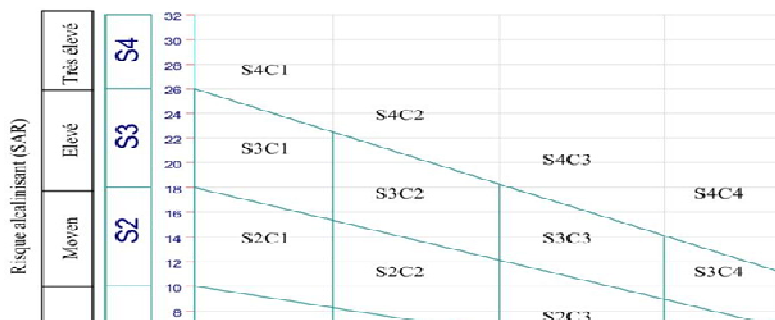
  

	R-Square	Coeff Var	Root MSE	Data Mean
	0.96822	0.51606	92.62988	179.49283

At the 0.05 level, the population means are significantly different

### 3.2. Ability of treated effluents for irrigation

Based on results presented above, pH between 6.5 and 9.5 and conductivity not exceeding 3000  $\mu\text{s}/\text{cm}$ , it appears that wastewaters used in the present study would not present any risk of soil salinization [26]. They could therefore be applied as irrigation water, according to the standard for agricultural reuse of treated waste water. However, average SAR value of 3.78 (between 3 and 9 meq/l) indicates that treated wastewater has a minor restriction. Sodium Adsorption Rate describes amount of sodium in excess in relation with calcium and magnesium cations that can be tolerated in irrigation water [27]. Finally, S1C3 class determined according to Richards diagram (Figure 2), which is a combination of SAR and conductivity, shows that these treated wastewaters could be used without special control for irrigation of crops moderately tolerant to salts, on well-drained or well-permeable soils. However, quality of an irrigation water can only be established according to the soil that receives it and the crop to be grown (Rodier, 2005) [28].



**Figure 2** :Irrigation water classification diagram[8].

### 3.3. Assessment of treated wastewater fertilizing capacity

Fertilizing capacity was assessed according to 3 parameters: nutrient content (N, P, K), biodegradability (K and C/N) and effect of treated wastewater use on crop development and yield.

#### 3.3.1. Treated effluent biodegradability and nutrient content

Average biodegradability index (COD/BOD<sub>5</sub>) of treated wastewaters from Korhogo is 3.15. This result, between 3 and 5, means that treated effluents are moderately biodegradable [25]. Mean value of C/N ratio obtained is 1.14. This value, which is less than 15, shows that the organic matter contained in treated effluents could degrade rapidly and produce significant quantity of nitrogen during its decomposition [11]. More rapid the decomposition is, more plant needs are met in real time. This would allow for good growth and yield. When C/N is high than 15, organic matter would decompose more slowly in soil. Inputs of nitrogen would then be required to cover the requirements in order to allow a good decomposition of carbon material [29].

For treated wastewater used in this study, amounts of nutrients (N, P, K) provided (Table 4) are 61200 mg/m<sup>2</sup> or 612 kg/ha nitrogen, 16200 mg/m<sup>2</sup> or 162 kg/ha phosphorus and 10800 mg/m<sup>2</sup> or 108 kg/ha potassium, respectively for okra. For maize, 37400 mg/m<sup>2</sup> or 374 kg/ha nitrogen, 9900 mg/m<sup>2</sup> or 99 kg/ha phosphorus and 6600 mg/m<sup>2</sup> or 66 kg/ha potassium. Average nutrient content (N, P, K) is well above standards recommended by CNRA. According to CNRA's technical data sheet, 250 kg/ha of NPK is required to grow okra (10-18-18). For maize, 250 kg/ha of NPK (15-15-15) is required. This is equivalent to 25 kg/ha nitrogen and 45 kg/ha phosphorus and potassium for okra. For maize, this corresponds to an intake of 37.5 kg/ha of each of the 3 elements. These high levels of nutrients, provided by treated wastewater, are expected to have a negative impact on plants through toxicity and may cause plants death [22]. However, in the case of the present study, plants developed normally. This situation could be explained by well-drained soil leading to an infiltration of some provided nutrients according to [30].

**Table 4:**Nutrient contents (N, P, K) provided by treated effluents

	Experimental values		CNRA values	
	Gombo	Maïs	Maïs	Gombo
Nitrogen (Kg/ha)	374	612	37,5	25
Phosphorus (Kg/ha)	99	162	37,5	45
Potassium (Kg/ha)	66	108	37,5	45

### 3.3.2. Effect of the use of treated effluents on vegetative development

Effect of the use of treated effluent on crop development and yield was assessed based on germination rate and time, plant size during growth, and harvest yield. On maize plot irrigated with treated effluents, germination rate was 95%, compared with a germination rate of 82.5% for the plot irrigated with well water. For okra, a germination rate of 87.5% on the plot watered with the treated effluent was obtained, compared with a germination rate of 85% for the plot treated with well water. Germination rate fluctuates between 82.5% and 95%, which indicates good quality of grains (references). Furthermore, it should be noted that germination rates are slightly higher on plots watered with treated effluents and a much longer germination time for plots watered with well water. In fact, maize and okra grains started germinating on 4th day on plot irrigated with treated wastewaters, contrary to those of plot irrigated with well water, where 6 to 7 days were required for germination. This indicates that treated effluents would contain elements favouring rapid germination of seeds compared to well water. These results are consistent with those reported by [31]. with a time of 3 to 4 days between maize grains sowing and emergence. According to [32], germination of maize (emergence) takes place between the 4th and 8th days. For okra, this emergence takes place between 7 and 10 days after sowing [33].

Figure 3 shows change in average size of maize (a) and Gombo (b) plants on ridge watered with treated effluents and ridge irrigated with well water. For maize, it should be noted a difference in size of approximately 3 cm at 2 weeks after sowing, reaching a difference of approximately 36 cm after 9 weeks of sowing. This difference is in favor of plants watered with treated effluents. For okra, the difference in size is about 1.5 cm at 2 weeks after sowing, reaching a difference of about 32 cm at 9 weeks of sowing, also in favor of plants watered with the treated effluents. These results indicate that treated effluent would promote better plant growth compared to well water.

Figure 4 shows representative curves of maize and okra plants growth kinetics, with a correlation coefficient above 99.3%. These curves are Sigmoid3 sigmoid type and are expressed by equation 3. These graphs have a threshold at  $Y=a$  (Figure 4), representing average maximum size that corn and okra plants can reach before flowering period. In the present study, as shown in Table 5, maize average maximum height is respectively about 234 cm for plants watered with treated effluents and about 195 cm for plants irrigated with well water. These results are consistent with works of [34] and [35], on certain varieties of maize with average stem heights between 1.5 and 3 m in height. For okra, average maximum height (Table 5) is respectively approximately 90 cm for plants watered with treated effluent and approximately 15 cm for plants irrigated with well water. These results, in particular for plants watered with treated effluents, are in accordance with works of [33], according to which height of okra varieties would generally be between 50 cm and 2.50 m.

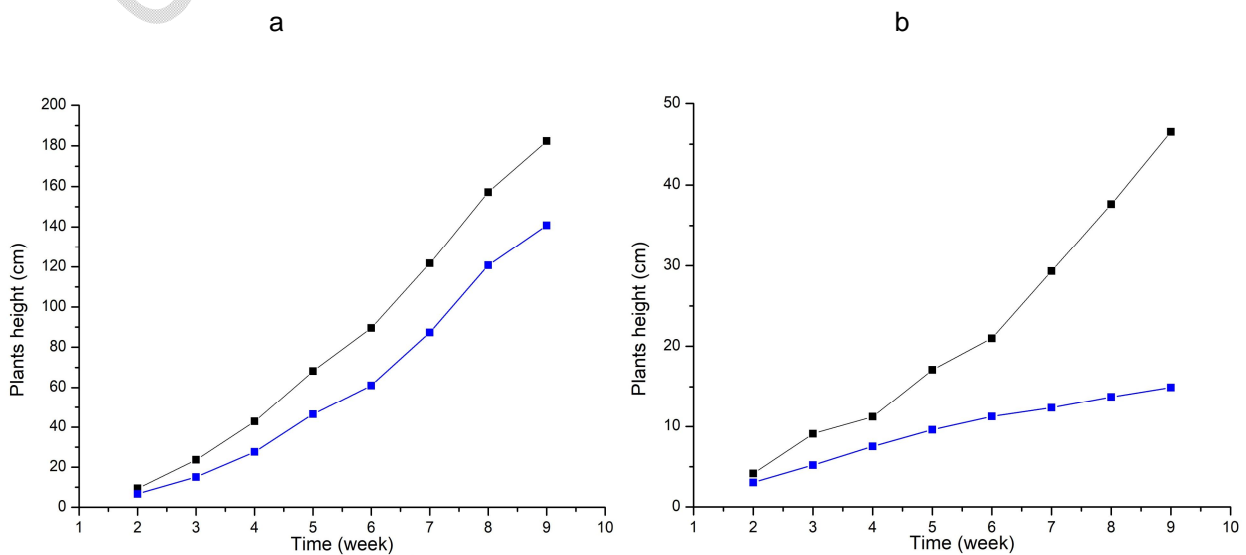


Figure 3:Growth kinetics of corn (a) and okra (b)

Equation 3 : 
$$y = \frac{a}{1+be^{-kx}}$$

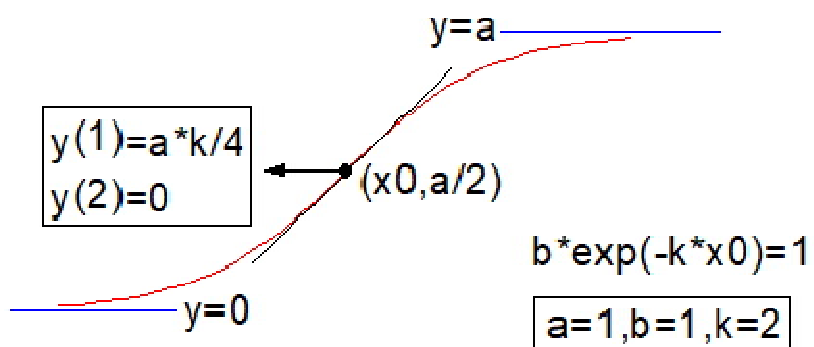


Figure 4: Determination of the average maximum height of corn and okra plants

Table 5: Statistical Analysis of Growth Kinetics of corn and okra

		a		b		k		Statistics	
		Value	Standard Error	Value	Standard Error	Value	Standard Error	Reduced Chi-Sqr	Adj. R-Square
Corn	Treated wastewater	234.098	17.126	45.469	7.432	0.563	0.045	15.528	0.996
	Well water	195.443	19.272	61.531	11.302	0.566	0.05	11.088	0.995
Okra	Treated wastewater	90.390	19.521	33.937	4.132	0.398	0.041	1.038	0.995
	Well water	15.519	0.566	10.927	1.736	0.564	0.051	0.131	0.993



Figure 5: Okra and corn plants at 6 weeks

### 3.3.1. Effect of the use of treated on crop yield

At the end of the experiment, 3.15 kg of okra were harvested from ridge irrigated with treated wastewater, compared with 0.36 kg from ridge irrigated with well water. Harvest on ridge irrigated with treated wastewater is about 9 times higher than that on ridge irrigated with well water (Figure 6). For maize, 12.2 kg of fresh ears were harvested on ridge where treated wastewater was used for irrigation, compared with 4.80 kg on ridge where well water was used, with a superiority ratio of 2.50.

This improvement in production on ridge irrigated with treated effluent could be explained by the presence of sufficient nutrients in these waters [36]. These results are consistent with those of [22], which studied fertilizing ability of treated wastewater for vegetable crops in Burkina Faso (Loumbila commune).



Figure 6: One-day harvest from plots irrigated with treated effluent and well water

#### 4. CONCLUSION

The present study has shown that treated domestic wastewater contains sufficient nutrients to be an alternative to mineral fertilizers used in vegetable crops downstream of wastewater treatment plant of Korhogo, along the discharged treated water flow bed. Analyses revealed compliance of majority of physico-chemical and microbiological parameters with WHO standards for treated wastewater discharge, except total nitrogen, nitrates, nitrites, ammonia, dissolved matters and total phosphorus which have average values slightly above standards. Richards diagram, which classifies irrigation

water by relating SAR to conductivity, assigned class C3S1 to treated effluents. These waters can therefore be used without any particular control for the irrigation of crops that are moderately tolerant to salts, on well-drained or well-permeable soils. Assessment of fertilizing capacity through COD/BOD, C/N ratios and NPK content shows that organic in these waters is rapidly degrading and treated effluents contain sufficient nutrients to support better crop growth and productivity. The use of treated waters from Korhogo wastewater treatment plant, as irrigation water, leads to an improvement in crops development, particularly about germination, growth and yield, with a productivity approximately 7 times compared to well water.

In terms of perspective, it would be interesting carried out further studies in order to:

- Characterize treated effluents and study their irrigation capacity significantly over a long period, even a year, with regular weekly or monthly campaigns;
- Carry out a comparative study using treated effluents and chemical fertilizers on large plots to confirm the results obtained.

## REFERENCES

1. African Bank of Development. Fertilizer sector in Africa and the Bank's 5 priorities. 2020 Available: [https://www.afdb.org/sites/default/files/2020/07/14/le\\_secteur\\_des\\_engrais\\_en\\_afrique\\_et\\_le\\_top\\_5\\_de\\_la\\_banque.pdf](https://www.afdb.org/sites/default/files/2020/07/14/le_secteur_des_engrais_en_afrique_et_le_top_5_de_la_banque.pdf).
2. Naitormbaide M. Impact of the management manure and crop residue on soil productivity in the savannah of Chad. PhD thesis, Polytechnic University of Bobo Dioulasso. 2012.
3. Montangero A., Strauss M. Wastewater management, EAWAG/SANDEC, Dübendorf: Switzerland, 2002.
4. Strauss M, Kone D, Montangero A. Applied research in the field of waste sludge management in developing countries, EAWAG/SANDEC, Dübendorf: Switzerland, 2003.
5. Strande L, Ronteltap M, Brdjanovic D. (Eds.). Faecal Sludge Management: Systems Approach for Implementation and Operation. IWA Publishing. 2018 french edition. 2014.
6. World Health Organization. Use of excreta and household water in agriculture. Volume 4. WHO Guidelines for Safe Use of Wastewater, Excreta and Household Water. 2012.
7. Kouakou S, Seyhi B, Gnamba FM, Kouame A, Kouassi M. Wastewater Management of Korhogo City, Asian Journal of Environment & Ecology. 2019; 11(1): 1-11.
8. Richards LA. Diagnosis and Improvement of Saline Alkali Soils. Agriculture Handbook 60. US Department of Agriculture. Washington D.C. 1954.
9. Rodier, J. L'Analyse de l'Eau : Eaux Naturelles, Eaux Résiduaires et Eaux de Mer. 9th Edition, DUNOD, Paris, 1384. 2009.
10. Bordet J. L'eau dans son environnement rural : Hydraulique et cycle de l'eau, l'alimentation en eau potable, l'assainissement des agglomérations. Editions Johanet. 2007.
11. Giroux, Audesse. Comparison of two methods for determining organic carbon, total nitrogen and C/N ratios of various organic soil improvers and farm fertilizers, agro-soil. 2004; 15 (2): 107-110
12. ALHOU B. Impact of releases from Niamey (Niger) on water quality of Niger River. Doctoral thesis, University of Namur (Belgium). 2007.

13. Abdelbasset B, Hassan H, Mohammed K, Mounia A. Physico-chemical and bacteriological characterization of raw wastewater in Oujda city: Bounaïm Oued and main canal. Master Thesis. University of Oujda. 2002.
14. Canna. pH and acidity: the effect of acidity on your plants. 2010. Available:<https://www.canna.ca/fr/articles/le-ph-et-lacidite-leffet-de-lacidite-sur-vos-plantes>
15. Liette Lambert. Acids, Fertilizers and Mysteries. Quebec Ministry of Agriculture, Fisheries and Food Saint-Rémi. 2000.
- 16 Andre Carrier. What's going on in the ground? Greenhouse vegetable production. Quebec Ministry of Agriculture, Fisheries and Food. 2003.
17. Passy J. Chemical and bacterial characterization of raw wastewater at Kossodo station, Master thesis. International Institute for Water and Environmental Engineering. 2007.
18. Khamis AD. Physico-chemical and microbiological characterization of wastewater pumping station n° 4 (sp4) of Ouagadougou (Burkina Faso). Master thesis. Institut International d'Ingénierie de l'Eau et de l'Environnement. 2015.
19. AMADOU H, LAOUALI MS, MANZOLA AS. Assessment of discharged wastewater from Niamey city into Niger River, *Afrique Science* ISSN 1813-548. 2011; 07(2): 43-55
20. Faby J, François B. Using of treated wastewaters in irrigation. International Office for Water, Directorate for Documentation and Data (France), 1997. Available:[https://www.fndae.fr/archive/numero\\_HS11.html](https://www.fndae.fr/archive/numero_HS11.html)
21. Benamar S, Boulouak H. Effects of treated wastewater on development and growth of alfalfa (*Medicago sativa* L.). Master's thesis. Mouloud Mammeri University of Tizi-Ouzou. 2016.
22. Lakte P. Study of fertilizing power of treated wastewater in vegetable crops. Thesis of rural equipment Engineering, EIER-ETSHER. 2006.
23. Sou M, Yacouba H, Mermoud A. Valoring of fertilizing power of wastewater in vegetable irrigation in Burkina Faso. *Science and technology, Natural sciences and agronomy*. 2008 ; 30 (1) : 39-51
24. World Health Orgazation. Utilisation des eaux usées en agriculture et en aquaculture. Série de rapport technique 778.1989
25. Louaguenouni K. Treated wastewater quality monitoring of BARAKI treatment plant for agricultural reuse, Master Thesis. Mouloud Mammeri University of Tizi-Ouzou. 2017.
26. KAKOU SLK. Physico-chemical quality of releases from wastewater treatment plant of Ouagadougou, Burkina Faso. Master's thesis. International Institute for Water and Environmental Engineering. 2021.
27. Bouaroudj S. and Kadem DED. Evaluation of Irrigation Water Quality Wadi: Rhumel and Boumerzoug (Constantine). *Revue Scientifique et technique LIEE*, 2014; 24&25: 36-44.
28. Rodier J. Water analysis: natural water, waste water, sea water. 8th edition. Dunod Edition. 2005.

29. Jean P, Gaspard M. Gilles B. Organic products for use in agriculture in the doc-Roussillon language. Technical Guide. Volume 1. Lattes Cedex, Regional Chamber of Agriculture in Languedoc-Roussillon. 2011.

30. Fox TR, Allen HL, Albaugh TJ, Rubilar R, Carlson CA. Tree nutrition and forest fertilization of pine plantations in the southern United States. *South. J. Appl. For.* 2007; 31: 5-11

31. Goalbaya T. Influence of water stress on physiology and yield of local maize varieties (Zeamays L) selected from open pollinated populations in Chad. Unique PhD thesis at the Cheik Anta Diop University in Dakar. 2014.

32. Maybelline ETH, Maiga A. Production and processing of maize. The Pro-Agro collection. 2012: 32 p

33. Fondio Lassina, DjidjiAndé Hortense, Kouamé Christophe, Aïdara Sékou and Hala N'Klo. well Growing okra in Côte d'Ivoire. National Center for Agricultural Research. 2007.

34. Diallo DM, Touré A, Mbacké FD, Saleh MM, Goalbaya T, Ndiaye AB et al. Determination of the optimal dose of mineral fertilizer 15-15-15 of 5 varieties of sweet corn (Zeamays L. ssp. Saccharata) in Senegal. *European Scientific Journal, ESJ.* 2016; 12(27): 135.

35. Goalbaya T, TOUKAM SMG, DIALLO MD, KAPAGNON BH, Guisse A. Evaluation of the agronomic performance of improved varieties of maize (Zeamays L.) in a peasant environment in the Sudanese zone of Tchad. *Journal of Animal & Plant Sciences.* 2019; 41 (3): 6977-6988

36. Naika S, Dejeude J, DeGoffau M, Hilmi M, VanDam B. The Tomato cultivation: production, processing and marketing. Agromisa and CTA Foundation, Wageningen. Fifth revised edition. 2005: 105 p.

## **DEFINITIONS, ACRONYMS, ABBREVIATIONS**

Here is the Definitions section. This is an optional section.

**Term:** Definition for the term

## **APPENDIX**