

Morphological Characterization of native isolates of Hypocreale fungi *M. rileyi* from maize fall armyworm

Abstract

The Present studies indicates the collection of entomopathogenic fungi from the roving survey in Northeastern region of Karnataka. Different morphological parameters used for describing the growth pattern which indicates diversity and uniqueness of *M. rileyi*. e., colony colour which was white during initial stage and then during sporulating stage the colour changed into malachite green colour. The conidiophores were in compact patches. Conidia were aseptate, hyaline, round or ovoid in shape and elongate by forming chains. Conidiophores were short, which bears round to ovoid aseptate conidia in different isolates.

The conidia size on its ratio found that, the highest size ratio was recorded in UASRBC Mr-20 2.19 then remaining isolates which has shown less than 2.0. The radial growth found only in Mr-20 and Mr-22nd Isolates, colony diameter ranged from 0.3 to 2.23 cm, concentric rings of colonies found in all the isolates except Mr-19 and Mr-20th isolates. The colony surface layer was white cottony growth to pale yellow color was found in all the isolates, the colony pigmentation in most of the isolates was light brown colored pigmentation. The growth appearance was irregular patchy growth was observed in most of the isolates. Among six different isolates the highest width was recorded in isolate UASRBC Mr-20 (6.46) followed by UASRBC Mr-22 (5.73) which was significantly superior than remaining isolates. The highest colony diameter was recorded in UASRBC Mr-18 (19 mm). [provide a conclusion](#)

Introduction

Traditional agriculture uses large amounts of chemical pesticides to control pests, which can act against the environment, beneficial insects and even human health (Kim *et al.*, 2016). These drawbacks are currently generating a shift towards a sustainable agriculture, with a gradual reduction in the application of synthetic chemical compounds. Currently, research in the area of sustainable agriculture seeks the development of pesticides using organisms with the natural ability to parasitize and kill plant pests (Folgarait *et al.*, 2011, Erler & Ozgur, 2015). These organisms are commonly called biological control agents among them one is Entomopathogenic agents which

Comment [TM1]: Provide background as to why the study was done

Comment [TM2]: Mention country as well to make it easier to identify

Comment [TM3]: I would mention aspects that were looked at before presenting the results.

Comment [TM4]: Modern

Comment [TM5]: You could provide more references

includes bacteria, fungi, viruses, nematodes and protozoa, and among the fungi the most studied are microorganisms of the genera *Beauveria*, *Metarhizium* and *Paecilomyces* (De *et al.*, 2014). In this context, the biotechnological use of entomopathogenic fungi as biocontrol agents is presented as a sustainable alternative to the limited number of available chemical pesticides. The characterizations of strains of entomopathogenic fungi, as well as the knowledge of the biological aspects related to the behavior of these strains against susceptible pests, are prerequisites for effective integrated pest management practices (Figuroa *et al.*, 2007).

In addition to biotic stress, the effectiveness of EPF in controlling insect pests is influenced by the diversity of varieties or strains or types of them (ref). The pathogenicity, virulence, enzymatic characteristics, and DNA also varies among different isolates of different insects, hence the origin of the isolate affects the virulence diversity of the fungus against the host insect. Therefore morphological and molecular identification of fungi is considered an essential step in the selection of biocontrol agents (Tigano *et al.*, 1995; Boucias *et al.*, 2000).

The climate characteristics and conditions promote the development of a wide variety of plant and fungal species, turning the province of Northeastern region of Karnataka into one of the most favorable regions for the search and isolation of fungal strains. Traditional morphological identification of fungi is based on the study of macroscopic and microscopic structures (Shenoy *et al.*, 2007, Piontelli, 2015). Especially, the shape and size of the conidia are the most used traits for the identification of *Beauveria* and *Metarhizium* species (Samson *et al.*, 1988; Humber, 2012). In this work the objectives proposed were to isolate and identify morphologically the native isolates of *M. rileyi* from maize ecosystem in the province of Northeastern region of Karnataka.

Materials and methods

Collection of cadavers in North Eastern Karnataka

The roving survey was carried out in different districts of North Eastern region of Karnataka in different cropping ecosystems during 2020-21.

Isolation of *M. rileyi* collected from different North Eastern Karnataka

Collected cadavers were brought to the laboratory and kept for sporulation and later surface sterilized by immersing in 0.5 per cent HgCl₂ for two minutes. Infected tissue of

Comment [TM6]: Vague

Comment [TM7]: This paragraph comes before the one on top. Provide the study objective as the end

Comment [TM8]: Where is this place
How were the surveys conducted

Comment [TM9]: Which cadavers?
Where they diseased?
How many cadavers
What was their symptomology?

Comment [TM10]: Where were they kept?
Freezer?

the fungi was transferred on SMAY medium (Patil *et al.*, 2014). The inoculated plates measurements? were incubated at room temperature 25 ± 2 °C humidity? for a week and the sporulated colonies were further purified by repeated subculture on SMAY medium. Initially, the colour of the colony was pale green to pale turtle green, then changing into olive to malachite green.

Comment [TM11]: Fungi or the cadaver itself

Comment [TM12]: More details on the subculture process

Taxonomic position of the test mycoagent, *M. rileyi*

Kingdom : Fungi

Division : Ascomycota

Class : Sordariomycetes

Order : Hyphocreales

Family : Clavicipitaceae

Genus : *Metarhizium*

Species : *rileyi*

A key and synoptic illustrations to the taxon of the currently described *Nomuraea* species are provided by Hocking (1977).

Comment [TM13]: Seems out of place. I might be wrong.

Morphological characterization of *Metarhizium rileyi*

The pure isolates of *M. rileyi* were grown on SMAY media. The inoculated Petri plates were incubated at 25 ± 2 °C for 14 days. The various observations on morphological and growth characteristics of individual isolates of *M. rileyi* were recorded after 14 days of incubation at 25 ± 2 °C. The following observations of individual isolates of *M. rileyi* were recorded (Ramanujam *et al.*, 2020). The radial growth of each isolate, the presence or absence of radial growth was recorded. For each of the isolates, five mm circular plugs were cut from non-sporulating mycelia on 8-9 days old culture dishes using a cork-borer from the colony growth edge. Radial growth of the colony was recorded daily for up to 18 days. (Dimbiet *et al.*, 2004). Colony colour was recorded on 16th day after inoculation, colony diameter recorded by taking average of the radial growth of the colony in two directions on the 12th, 14th and 16th day after inoculation and the data were analyzed statistically, the presence or absence of concentric rings/circles were recorded on 16th day by visual observation, colony surface layer as a secondary growth on colonies such as presence or absence of white cottony and pale yellow to cottony growth was observed on the 19th day by visual observation, colony pigmentation was recorded in each *M. rileyi* isolate during the growth from 21 days old culture, the appearance of growth *i.e.* circular, irregular or patchy, thin or thick, *etc.*, was recorded at 21 DAI by visual observation, shape of ten spores and the colour of ten spores were observed under the

Comment [TM14]: It's a bit confusing how was it established it was *M. rileyi* from the cadavers. Were the cadavers intentionally inoculated with this species. How was the identification done to get to this process.

Comment [TM15]: Mention them

Comment [TM16]: I assume it measured. Explain the measurement process

Comment [TM17]: Consistency and you need to mention the full meaning before shortening

microscope for each isolate, to measure the size of spores the ocular micrometer was calibrated with a stage micrometer for microscope (40X), the length and width of ten spores per isolate was measured and calculated as follows.

$$\text{Length and width ratio} = \frac{\text{Length of spore}}{\text{Width of spore}}$$

Data analysis?

Result and discussion

Morphology and growth characteristics of *M. rileyi* isolates

Selected morphological characters of each isolate of *M. rileyi* on SMAY medium were studied and observations were recorded (Fig. 1B).

Table 1. Subcultures of *M. rileyi* on SMAY media

Sl. No.	Crop	Host	Location	Isolate number
1	Maize	<i>S. frugiperda</i>	Askhal, Raichur	UASRBC Mr -3
2	Maize	<i>S. frugiperda</i>	Gondbal, Koppal	UASRBC Mr -15
3	Maize	<i>S. frugiperda</i>	Konchigeri, Ballari	UASRBC Mr -18
4	Maize	<i>S. frugiperda</i>	ARS, Siruguppa	UASRBC Mr -19
5	Maize	<i>S. frugiperda</i>	Tekkalakote, Ballari	UASRBC Mr -20
6	Maize	<i>S. frugiperda</i>	Halekota, Ballari	UASRBC Mr -22

Table 2. Morphological characteristics of subcultured (colonies) isolates of *M. rileyi* collected from different locations of North Eastern Karnataka

Sl. No.	Isolate	Colony colour	Radial growth	Concentric rings	Colony surface layer	Colony pigmentation	Appearance of growth
1	UASRBC Mr-3	Pale green	Absent	Present	White cottony	Light to dark brown	Irregular
2	UASRBC Mr-15	Pale green	Absent	Present	White cottony	Light brown	Thick irregular
3	UASRBC	Pale green	Absent	Present	No	Dark brown	Irregular

Formatted: Indent: First line: 0"

Comment [TM18]: I feel this section could have been presented better.

1. The graphs and Tables do not have sufficient information to describe them. I would advise provide description of each graph and table.
2. The pictures are stretched try to maintain aspect ratio when enlarging.

Comment [TM19]: This info should be part of the methods

Comment [TM20]: Add coordinates as well

	Mr-18				cottony growth		to patchy
4	UASRBC Mr-19	Pale yellow to pale green	Absent	Absent	White cottony growth	Yellow to light brown	Thin covering
5	UASRBC Mr-20	Dark to pale green	Present (1.2cm)	Absent	No white cottony growth	Light to dark brown	Thin covering
6	UASRBC Mr-22	Dark to pale green	Present (1.6cm)	Present	Pale yellow to cottony white	Light brown	Thin flaky covering

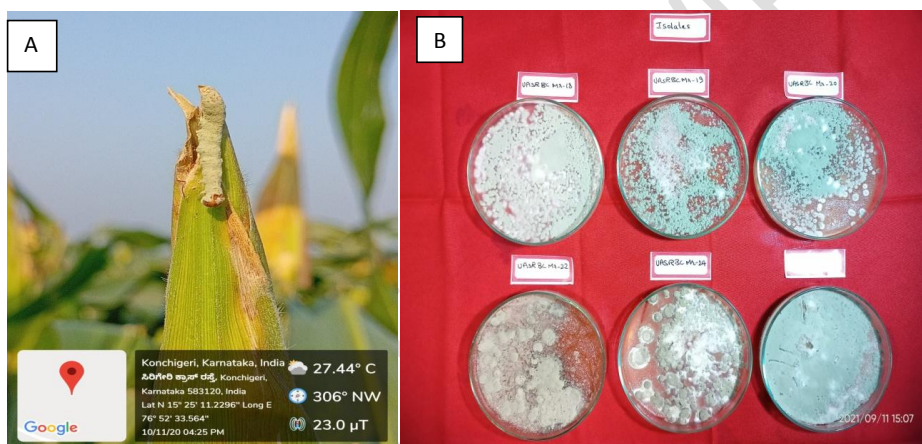


Fig. 1: A) Natural infestation of Entomopathogenic fungi on fall armyworm

B) Pure cultures of *M. rileyi*

Comment [TM21]: In full

A

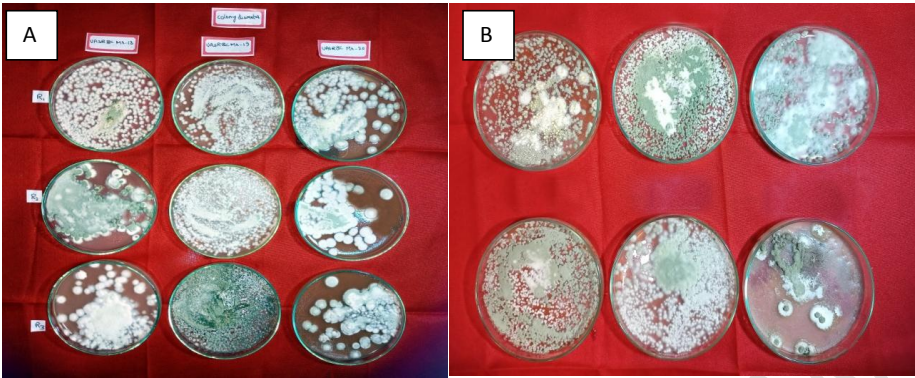


Fig. 2: A) Colony diameter of native isolates of *M. rileyi*

B) Colony surface layer of native isolates of *M. rileyi*

Comment [TM22]: Always write in full on captions

Table 3. Morphological characteristics of subcultured (colony diameter) isolates of *M. rileyi* collected from different locations of North Eastern Karnataka

Sl. No.	Isolates	Colony diameter (mm) at different time intervals		
		12 th DAI	14 th DAI	16 th DAI
1	UASRBC Mr-3	3.50 (2.00)	4.50 (2.24)	5.00 (2.35) ^{cd}
2	UASRBC Mr-15	13.5 (3.74)	14.00 (3.81)	15.00 (3.94) ^b
3	UASRBC Mr-18	15.00 (3.94)	17.5 (4.24)	19.00 (4.42) ^a
4	UASRBC Mr-19	1.00 (1.22)	2.00 (1.58)	3.00 (1.87) ^g
5	UASRBC Mr-20	8.00 (2.92)	10.00 (3.24)	11.00 (3.39) ^{bc}
6	UASRBC Mr-22	2.00 (1.58)	3.00 (1.87)	4.00 (2.12) ^f
SEm±		0.95	1.2	1.23
CD @ 0.01		4.18	4.42	4.13

Figures in the parenthesis indicate $\sqrt{(x + 0.5)}$ transformed values and Means followed by same letters in a column not significantly different by DMRT

The colony colour of each isolate was recorded at 18th DAI on SMAY medium by visual observation. The results presented in Table 2 showed that all the 6 isolates were visually differentiated into three main colour categories viz., pale green, dark to pale green, pale yellow to pale green (Table 2). This is in accordance with the Vimaladevi *et al.* (2002) who reported that the fungus was slow-growing with white to dull white colony was produced on SMAY medium which subsequently transformed into olive green to malachite green in colour with onset of sporulation.

Comment [TM23]: Description of results should come before the respective figure or Table.

and the radial growth was present in only two isolates viz., UASRBC Mr-20 and UASRBC Mr-22 with 1.2 cm and 1.6 cm respectively after 12 DAI but there was no radial growth in remaining isolates. The studies are in confirmation with Ganeshrao (2012) who recorded 38.72 mm of radial growth of *M. rileyi* on SMAY than SDAY and PDA media.

Comment [TM24]: hanging

The concentric rings of each isolate were recorded at 16th DAI. The results found that all 6 isolates showed concentric rings except UASRBC Mr-19 and UASRBC Mr-2.

The colony surface layer of at 19th DAI showed variation. Among all the isolates, the isolate UASRBC Mr-3, UASRBC Mr-15, UASRBC Mr-19, UASRBC Mr-22 showed white cottony growth.

Comment [TM25]: Are these in one paragraph?

Colony pigmentation was recorded on 19 days old cultures showed that an isolates showed light to dark brown pigmentation, while two isolates produced light brown pigmentation and where as dark brown pigmentation found in UASRBC Mr-18. Whereas, the only isolate UASRBC Mr-19 recorded yellow to light brown pigmentation. The variation in pigmentation of *M. anisopliae* was due to the isolates able to produce specific secondary metabolites that can change the colour of some culture media (Kovac *et al.*, 2020).

The appearance of growth was recorded at 19 DAI and presented in Table 2 showed the variation in the appearance of growth. The isolates showed irregular growth and irregular patchy growth. Few isolates showed thin covering type of appearance and also thin to thin flaky covering, thick irregular and irregular to patchy appearance in different isolates (Table 2 and Fig 2B).

Since there was no work carried on concentric rings, colony surface layer, colony pigmentation and appearance of growth particularly on *M. rileyi*. The variation in growth

parameters for different isolates, may be due to the fact that the collections were made on varied climatic conditions which might have resulted in the variation.

Colony diameter at 12th, 14th and 16th DAI

At 12th DAI all the 6 isolates showed diameter from 1mm to 17 mm. At 14th DAI showed diameter from 2mm to 19 mm in Table 3. At 16th DAI all the 6 isolates showed 3mm to 22.5 mm (Fig. 2B). The results showed statistically significant variation in colony diameter on SMAY medium. Which is in line with Ganeshrao (2012) recorded the highest colony diameter of 26 mm of *M. rileyi* and also opined that the temperature influenced the diameter of the colony was found at 25 °C and lowest at (13.50 mm) 40 °C temperature. [Refer to the respective figure or Table.](#)

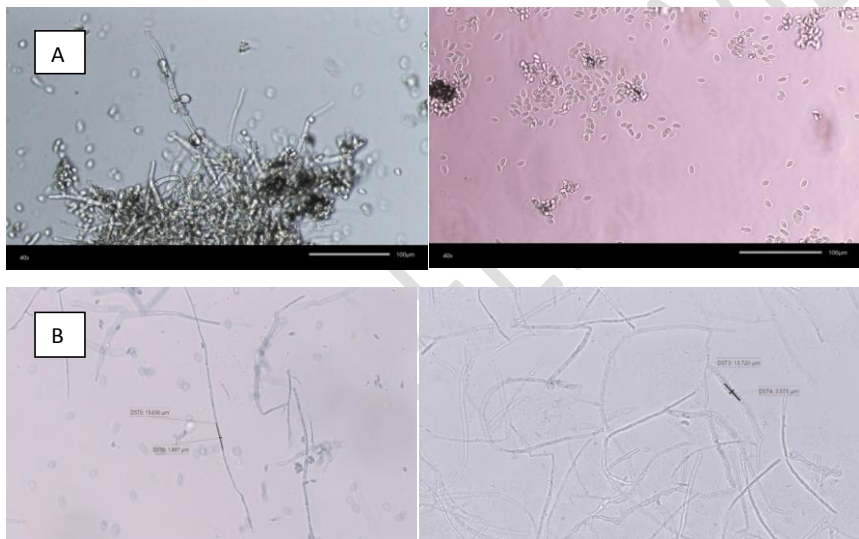


Fig. 3: A) Conidia and mycelial characters of native isolates of *M. rileyi*

B) Mycelial characters of native isolates of *M. rileyi*

Table 4. Morphological characteristics of subcultured (conidia) isolates of *Metarhizium rileyi* collected from different locations of North Eastern Karnataka

Sl. No	Isolate	Shape	Colour of the	Length (μm)	Width (μm) (40X)	Ratio	Mycelial width
.							

			Spores	(40X)			(μm)
1	UASRBC Mr-3	Oval to globose	Pale green	8.09 ± 0.05	5.48 ± 0.04	1.48 (1.41) ^{ab}	4.36 (2.20) ^c
2	UASRBC Mr-15	Oval to cylindrical	Pale green	9.57 ± 0.09	4.57 ± 0.02	2.09 (1.61) ^a	2.84 (1.83) ^d
3	UASRBC Mr-18	Cylindrical	Pale green	7.44 ± 0.05	3.79 ± 0.09	1.96 (1.57) ^{ab}	4.41 (2.23) ^c
4	UASRBC Mr-19	Elliptical to oval	Pale green	9.82 ± 0.17	6.05 ± 0.48	1.62 (1.46) ^{bc}	1.94 (1.56) ^e
5	UASRBC Mr-20	Oval to cylindrical	Pale green	9.55 ± 0.17	4.36 ± 0.50	2.19 (1.64) ^a	6.46 (2.64) ^a
6	UASRBC Mr-22	Cylindrical	Pale green	8.14 ± 0.42	4.33 ± 0.20	1.87 (1.54) ^{ab}	5.73 (2.49) ^{ab}

Figures in the parenthesis indicate $\sqrt{x + 0.5}$ transformed values

Means followed by same letters in a column not significantly different by DMRT

Shape of spores

After incubation for up to seven days, showed that the shape of spores varies from elliptical to globose and cylindrical to oval shape (Table 4, Fig. 3) which is in line with Brayford (1996) where conidia appears dusty pale green and are aseptate, smooth, hyaline, elliptical to sometimes cylindrical and 3-4 x 2-2.5 μm in size at 10X.

Length and width ratio of spores

Among all the six isolates, the highest length/width ratio of spores was observed in isolate UASRBC Mr-20 (2.19) and UASRBC Mr-15 (2.09) (Table 4 & Fig. 3).

The remaining isolates showed 1.48-1.96 ratio. The study is in accordance with Sampson (1994), as conidia aseptate, smooth, round to ovoid or elongate or single smooth ellipsoidal and slightly curved, in short, divergent chains, pale to dark green.

Mycelial width

The highest width of 6.46 μm was noticed in UASRBA Mr-20 and it was followed by UASRBC Mr-22 which recorded 5.73 μm mycelia width. The remaining isolates recorded 1.94-4.41 μm mycelial width (Table 3 & Fig. 3).

Comment [TM26]: I think you should show the actual values as opposed to the transformed values

Overall, the vegetative hyphae was hyaline, septate, smooth walled, sparse growth showed variation in mycelial width ranged from 1.94 to 5.73 μm . The present results are in line with the earlier studies of Brayford (1996) reported that the diameter of hyphae was 2-3 μm .

Conclusion

Highest cadavers of *S. frugiperdaw* was recorded in maize ecosystem at Ballari, Koppal and Raichur district. The present study is important to know the variation or diversity among the different isolates of *M. rileyi* and it also provides as base study for the future isolates of *M. rileyi*.

Comment [TM27]: Revisit this conclusion

Ethics approval and consent to participate

All experimental works were approved by University of Agricultural Sciences, Raichur.

Consent for publication

Not applicable.

Availability of data and materials

All data are available in the article and the materials used in this work are of high quality and grade.

Reference

Boucias DG, Tigano MS, Sosa DR, Glare TR, Inglis PW. Genotypic Properties of the Entomopathogenic Fungus *Nomuraearileyi*. *Biological Control Journal*, 2000; 19: 124-138.

Comment [TM28]: italicize

Brayford, D., 1996, *IMI* descriptions of fungi and bacteria set 127. *Mycopathologia.*, 133 (1): 35-63.

Comment [TM29]: ??

De A, Bose R, Kumar A, Mozumdar S. Targeted Delivery of Pesticides Using Biodegradable Polymeric Nanoparticles. *Springer Briefs in Molecular Science*; 2014.

Comment [TM30]: Year comes after author according to previous format

Dimbi, S., Maniania, N. K., Lux, S. A. and Mueke, J. M., 2004, Effect of constant temperatures on germination, radial growth and virulence of *Metarhizium anisopliae* to three species of African tephritid fruit flies. *Biocontrol.*, 49 (1): 83-94.

Erler F, Ozgur A. Potential of two entomopathogenic fungi, *Beauveria bassiana* and *Metarhizium anisopliae* (Coleoptera: Scarabaeidae), as biological control agents against the June beetle. *Journal of Insect Science*, 2015; 15: 1-6.

Comment [TM31]: italicize

Figuerola L, Varela A, Corredor D. Evaluación de sustratos naturales para la propagación masiva del hongo entomopatógeno *Paecilomyces fumosoroseus* (Deuteromycotina: Hyphomycetes). *Revista de Investigación*, 2007; 1(1): 127-131.

Comment [TM32]: Italicize

Folgarait P, Marfetan J, Cafaro M. Growth and Conidiation Response of *Escovopsis weberi* (Ascomycota: Hypocreales) Against the Fungal Cultivar of *Acromyrmex lundii* (Hymenoptera: Formicidae). *Environmental Entomology*, 2011; 40: 342-349.

Formatted: Font: Italic

Formatted: Font: Italic

Ganeshrao, 2012, Natural occurrence and characterization of entomopathogenic fungi *M.Sc. (Agri) Thesis*, submitted to Dr. Panjabrao Deshmukh Krishi Vidyapeeth, Krishinagar Po, Akola, Maharashtra, India.

Hocking, A. D., 1977, *Nomuraea anemonoides* sp. nov. from Australian soil. *Trans. Br. Mycol. Soc.*, 69: 511-513.

Comment [TM33]: In full

Humber R. Identification of entomopathogenic fungi. In: Lacey L, Editor. *Manual of Techniques in Invertebrate Pathology*. 2nd Edition. Academic Press: 2012.

Comment [TM34]: Year after authors

Kovac, M., Gorczak, M., Wrzosek, M., Tkaczuk, C. and Pernek, M., 2020, Identification of entomopathogenic fungi as naturally occurring enemies of the invasive oak lace bug, *Corythucha arcuata* (Say) (Hemiptera: Tingidae). *Insects*, 11(10): 679-691.

Kim K-H, Kabir E, Jahan SA. Exposure to pesticides and the associated human health effects. *Science of the Total Environment*, 2016; 575: 525-535.

Comment [TM35]: Fix the year

Patil, R. K., Bhagat, Y. S., Halappa, B. and Bhat, R. S., 2014, Evaluation of entomopathogenic fungus, *Nomuraea rileyi* (Farlow) Samson for the control of groundnut *Spodoptera litura* (F.) and its compatibility with synthetic and botanical pesticides. *J. Biopestic.*, 7: 106-115.

Comment [TM36]: In full

Piontelli LE. *Manual de microhongos filamentosos comunes I*. Viña del Mar: Chile: 2015.

Ramanujam, B., Poornesha, B. and Shylesha, A. N., 2020, Effect of entomopathogenic fungi against invasive pest *Spodoptera frugiperda* (J. E. Smith) (Lepidoptera: Noctuidae) in maize. *Egypt J. Biol. Pest Control*, 30 (1): 1-5.

Samson RA, Evans HC, Latgé JP. *Atlas of entomopathogenic fungi*. Springer-Verlag Berlin: Heidelberg, 1988.

Shenoy BD, Jeewon R, Hyde KD. Impact of DNA sequence-data on the taxonomy of anamorphic fungi. *Fungal Diversity*, 2007; 26: 1-54.

Tigano MS, Gomes CM, Sobral BWS. Genetic Variability among Brazilian Isolates of the Entomopathogenic Fungus *Metarhizium anisopliae*. *Journal of Invertebrate Pathology*, 1995; 65: 206-210.

Vimaladevi, V. P. S., Prasad, Y.G., Chowdary, A., 2002, Effect of drying and formulation of conidia on virulence of the entomo-fungal pathogens *N. rileyi* (F) Samson. *J.Biol. Control*,16 : 43- 48.

Control,16 : 43- 48.

[Please revisit each reference and make sure you are consistent.](#)

UNDER PEER REVIEW