

# MORPHOLOGICAL AND CULTURAL CHARACTERIZATION OF *Sclerotium rolfsii* Sacc. ON CHICKPEA AND ITS MANAGEMENT USING COMBINED FUNGICIDE MOLECULES

## ABSTRACT

Collar rot stands as a significant affliction of chickpea, attributed to the pathogen *Sclerotium rolfsii*. The current research investigated the morphological and cultural diversity among 10 isolates of *S. rolfsii* collected from major chickpea cultivation regions of Karnataka by assessing their growth rate, colony color and appearance, and features of *Sclerotium* including color, arrangement, and maturity days of Sclerotia were recorded on two different media. The isolates BSR 2, BSR 5, BRS 9 and BSR 10 exhibited notably rapid growth on both Potato Dextrose Agar (PDA) and Corn meal Agar (CMA). Overall, the growth of these isolates appeared denser, indicating more substantial mycelial formation on PDA compared to CMA. These findings underscore the existence of variability among the isolates. *In vitro* evaluation of fungicides for the management of collar rot was evaluated using new combi fungicides. Among those Carbendazim 12 % + Mancozeb 63 % (0.15 %), Hexaconazole 4 % WP + Zineb 68 %, Carboxin 37.5 % + Thiram 37.5 %, Tricyclazole 18 % + Mancozeb 62 % WP, Captan 70 % + Hexaconazole 5 % WP at 0.05 per cent concentration showed cent per cent inhibition. Hence, these combi fungicides have been proven effective in suppressing the pathogen, making them valuable tools for implementing successful disease management strategies during the initial stages of crop growth

## INTRODUCTION

Chickpea (*Cicer arietinum* L.) ranks as the world's third most significant food legume, trailing only dry bean and pea in importance. India holds the title of the largest producer of chickpeas, accounting for over 70% of global production. A significant challenge in agricultural production lies in effectively managing diseases caused by soil-borne pathogens. Among these diseases affecting chickpeas, collar rot stands out as a crucial issue, leading to seed rot and seedling mortality during the early stages of crop growth, up to 45 days after planting. Collar rot, caused by the fungus *Sclerotium rolfsii* Sacc., poses a significant threat to chickpea crops due to its rapid spread and destructive nature. Under favorable environmental conditions, this disease can lead to mortality rates ranging from 55%

to 95% during the seedling stage[1]. The *S. rolfsii* thrives in warm climates and is more prevalent in environments with high moisture and temperatures[2]. The Control of this pathogen has proven challenging, likely due to its vigorous growth, broad host range and ability to produce numerous Sclerotia that can persist in the soil for several years[3]. Efforts to manage collar rot in chickpea have been somewhat limited, as substantial levels of host plant resistance are lacking. However, the disease can be mitigated through the use of fungicides and appropriate crop rotation practices[4-5]. The present study aims to morphologically characterize the isolated fungus and evaluate the antifungal efficacy of novel fungicides against *S. rolfsii*, focusing on in vitro management of collar rot in chickpea.

## **MATERIAL AND METHODS**

### **Isolation of pathogen *S. rolfsii* from diseased samples**

Freshly diseased plant samples were collected from the research farm during the seedling and vegetative stages of the crop. The roots of the diseased plants, displaying symptoms, underwent thorough washing with water. Small segments of the infected roots were then carefully excised using a sterilized blade. These segments were surface sterilized by immersing them in a 1:1000 mercuric chloride (HgCl<sub>2</sub>) solution for one minute, followed by three rinses with sterilized distilled water to eliminate any residual HgCl<sub>2</sub>. Subsequently, the segments were aseptically transferred to Petri plates containing sterilized Potato Dextrose Agar (PDA) and incubated at a temperature of 25 ± 2°C for a period of three to five days. The plates were regularly monitored to observe the growth of fungal colonies originating from the different segments. Upon appearance of fungal colonies, they were transferred to PDA slants for the purpose of culture purification.

### **Cultural and morphological variability**

Various isolates of *S. rolfsii* from the North Karnataka region were examined for their cultural and morphological traits, including growth rate and sclerotial formation, using two solid media: potato dextrose agar (PDA) and corn meal agar (CMA). Each isolate of *S. rolfsii* was cultured on PDA and CMA media. A 0.5 cm diameter mycelial disc of each isolate was placed at the center of the plate and replicated twice. The inoculated plates were then incubated at 26 ± 1°C for a period of 20 days. The radial growth of each colony in one direction was measured, and visual observations regarding sclerotial formation were recorded. Morphological characteristics based on mycelia (including mycelial growth, colony

color, and appearance) and sclerotia (sclerotial color, shape, and arrangement on the surface of the media) were noted at 7 and 20 days of incubation, respectively, for each isolate.

### **In vitro evaluation of fungicides against *S. rolfsii* by poison food technique**

The effectiveness of seven combination fungicides Tubaconzole 50%+Trifloxystrobin 25% WG, Hexaconazole 4% WP + Zineb 68%, Captan 70%+Hexaconazole 5% WP, Propiconazole 13.9% + Difenconazole 13.9%, Carboxin 37.5% + Thiram 37.5%, and Carbendazim 12% + Mancozeb 63% WP was assessed *in vitro* at various concentrations (20, 50, 100, 200, and 500 ppm) to determine their impact on the growth of *S. rolfsii* on Potato Dextrose Agar (PDA) medium using the poisoned food technique [6].

Before the experiment, the pathogen *S. rolfsii* was inoculated on PDA medium for 7 days. The PDA medium was prepared and melted and the required amount of fungicide was added to achieve the desired concentrations. Twenty milliliters of poisoned medium was poured into each sterilized Petri plate, with a suitable control maintained without fungicide addition. To prevent bacterial contamination, a pinch of streptomycin sulfate was added to the medium during pouring. A five-millimeter mycelial disc was taken from the periphery of a 7-day-old colony of *S. rolfsii* and placed in the center of each Petri plate. The inoculated plates were then incubated at  $25 \pm 2^\circ\text{C}$ , with four replications maintained for each treatment. The colony diameter was measured at the point of maximum growth of *S. rolfsii* in any of the treatments, and observations were recorded. Percent inhibition was calculated using the formula proposed by [7].

$$I (\%) = (C-T)/C \times 100$$

Where,

I = Per cent inhibition,

C = Growth in control

T = Growth in treatment

## **RESULTS**

## Cultural and morphological variability of pathogen

Significant variations were observed among the isolates regarding their total growth and growth rate on Potato Dextrose Agar (PDA) and Corn Meal Agar (CMA) media (Fig. 1 & 2). Four isolates (BSR 1, BSR 2, BSR 5, BSR 7, BSR 9 and BSR 10) exhibited the maximum radial growth on PDA, reaching 96.10mm. Among these, BSR 2, BSR 5, and BSR 7 achieved 90.00mm growth within 3 days after inoculation (DAI), indicating their very fast growth. Another six isolates (BSR 1, BSR 2, BSR 5, BSR 7, BSR 9, and BSR 10) achieved 90.00mm diameter growth by 5 DAI, categorized as fast-growing. Three isolates (BSR 3, BSR 4, and BSR 8) exhibited growth of 81.00mm, 75.0mm, and 70.0mm, respectively, by 6 DAI, classifying them as moderate-growing. The isolate BSR 6 displayed the least growth (52.00mm) and was considered the slowest-growing isolate (Fig.1)

Similarly, considerable variation in total growth and growth rate was observed among isolates on CMA. Six isolates (BSR 2, BSR 4, BSR 5, BSR 9 and BSR 10) achieved maximum radial growth (93.80mm) by the 4th DAI. Among them, BSR 3, BSR 6, and BSR 8 achieved maximum radial growth (90.00mm) by the 3rd DAI, while the remaining isolates reached this growth by the 4th DAI. The remaining isolates were categorized as slow-multiplying isolates. The least growth was observed in the isolate, BSR 1(51mm) and considered as the slowest growing isolate among the 10 isolates (Fig. 2). The results of colony characters of *S. rolf sii* isolates on PDA and CMA (colony colour and appearance) are presented in Table 2.

The results obtained on PDA indicated that four isolates (BSR 1, BSR 2, BSR 5, BSR 7) displayed fluffy growth, while three isolates (BSR 3, BSR 4, BSR 6) exhibited cottony growth and the remaining three isolates (BSR 8, BSR 9 and BSR 10) demonstrated dense mat growth. Isolates BSR 1 also displayed as flower like pattern appearance of mycelium, while isolates BSR 4, BSR 7, and BSR 8 showed a wavy pattern. On CMA medium, four isolates (BSR 2, BSR 4, BSR 6, BSR 8) exhibited fluffy growth, two isolates (BSR 3 and BSR 7) showed cottony growth, two isolates (BSR 5, BSR 9) recorded dense mat growth, and the remaining two isolates (BSR 1 and BSR 10) displayed condensed growth. Overall, all *S. rolf sii* isolates demonstrated denser mycelial growth on PDA compared to CMA medium, indicating PDA as the preferred medium for the multiplication and maintenance of the pathogen. Regarding sclerotial characters such as time taken for production, colour and site of production, variations were observed among isolates on both PDA and CMA. Isolates BSR

2, BSR 3, BSR 5, and BSR 7 took the longest time for sclerotial production on PDA, while isolates BSR 9 and BSR 10 exhibited the shortest time. sclerotial colors ranged from brown to light orange, and the site of sclerotial production varied among isolates on both media. Similarly, variations in sclerotial characters were observed on CMA, with some isolates showing faster sclerotial production compared to others. Isolates BSR 2, BSR 3, BSR 5, and BSR 7 required the maximum time for sclerotial production on CMA, while BSR 10 exhibited the shortest time (Table 2).

### ***In vitro* evaluation of new fungicide molecules against *S. rolfsii***

The efficacy of six combi products viz., The effectiveness of seven combination fungicides Tubaconzole 50%+Trifloxystrobin 25% WG, Hexaconazole 4% WP + Zineb 68%, Captan 70%+Hexaconazole 5% WP, Propiconazole 13.9% + Difenconazole 13.9%, Carboxin 37.5% + Thiram 37.5%, and Carbendazim 12% + Mancozeb 63% WP were evaluated against *S. rolfsii* at five different concentrations (20, 50, 100, 200, and 500 ppm) under *in vitro* by the poisoned food technique revealed the mean mycelial growth suppression ranging from 23.27 to 100 per cent in total.

The data presented in Table 3 revealed that out of the six combo fungicides, four viz., Tubaconzole 50% + Trifloxystrobin 25% WG, Captan 70%+ Hexaconazole 5% WP, Propiconazole 13% + Difenconazol and Carboxin 37.5% + Thiram 37.5% were found to be highly effective at all the concentrations with 100 per cent inhibition in mycelial growth of *S. rolfsii*. The Carbendazim 12% + Mancozeb 63% was found to be least effective in lower concentrations but a higher concentration (500 ppm), showed 100 per cent inhibition of mycelial growth of *S. rolfsii* (Fig.3).

## **DISCUSSION**

Studying morphological and cultural variability is crucial for understanding the behavioral patterns of *S. rolfsii* growth across diverse media. The majority of our isolates exhibit distinct morphological and cultural patterns when grown on PDA compared to CMA. Several researchers [8- 20] reported that the most suitable medium for better growth of *S. rolfsii* was Potato dextrose agar medium. Similar results were also observed in studies by [21] where they evaluated effects of different culture media on *S. rolfsii* mycelial growth, sclerotial production. [22] examined total of seven media were used for studying the growth of *S. rolfsii* in Lentil and [23, 24] also proved the efficiency of PDA

in enhancing mycelial growth of fungus out of nine different cultural media. Their results reported that potato-dextrose medium was most suitable for mycelial growth and sclerotia production of *S. rolfsii*. Thus, the present observation confirmed earlier reports of PDA media suitability for the growth of *S. rolfsii* isolates. The efficacy of 6 combo fungicides was tested at different concentrations of 20, 50, 100, 200 and 500 ppm against *S. rolfsii* on PDA by poisoned food technique *in vitro* condition with new combo fungicide. It revealed that fungicides, Hexaconazole 5% EC, Propiconazole 25% EC, Tubaconazole 50% + Trifloxystrobin 25% WG, Captan 70% + Hexaconazole 5% WP, Propiconazole 13% + Difenconazole and Carboxin 37.5% + Thiram 37.5% showed complete inhibition of the pathogen at all the concentrations tested. Whereas, Carbendazim 12% + Mancozeb 63% was found inhibitive only at higher concentrations (100 ppm). The *in vitro* testing of fungicides gives valuable data on their ability to effectively combat a pathogen in the shortest period of time, and as a result, These results are in agreement with the findings of other studies [25-27] who reported that the combo products containing triazoles viz., Avatar, Merger and Nativo were highly inhibitive to the growth of *S. rolfsii*. Similarly the studies by [28-31] who observed that 100 per cent inhibition of mycelial growth by these combi fungicides against *S. rolfsii* Sacc. from different crop system. [32] also reported the effectiveness of combi fungicides tebuconazole + trifloxystrobin against foot rot pathogen of tomato (*S. rolfsii*). Similarly, [33] in their studies on *in vitro* evaluation of fungicides against *S. rolfsii*, the causal agent of collar rot of gerbera noticed 100 per cent inhibition of the growth of the pathogen by the fungicides.

## CONCLUSION

In the present study, morphological and cultural variability of 10 isolates of *S. rolfsii* isolated from major chickpea growing areas of Karnataka were studied based on their growth rate, colony colour and appearance and *Sclerotium* colour, arrangement and maturity days of sclerotia using two solid media viz., Potato Dextrose Agar and Corn meal Agar, Which revealed that the isolates, BSR 2, BSR 5, BSR 9, BSR 10 had very fast growth on both PDA and CMA. The overall growth of the isolates was more (dense mycelial formation and sclerotial bodies) on PDA compared to CMA. Thus, the current study demonstrated the existence of variability among the isolates, effect of various culture media on cultural characteristics and sclerotial development. In the present studies the fungicides, Hexaconazole 5% EC, Propiconazole 25% EC, Tubaconazole 50% + Trifloxystrobin 25% WG, Captan 70% + Hexaconazole 5% WP, Propiconazole 13% + Difenconazole and

Carboxin 37.5% + Thiram 37.5% were highly effective even at least concentration of 25 ppm under in vitro conditions. The least per cent inhibition was observed in Carbendazim 12% + Mancozeb 63% which was found effective only at 500 ppm tested.

Therefore, it would be beneficial for selecting suitable disease management strategies by utilizing new generation fungicide molecules under field condition.

## COMPETING INTERESTS

Authors have declared that no competing interests exist

## REFERENCES

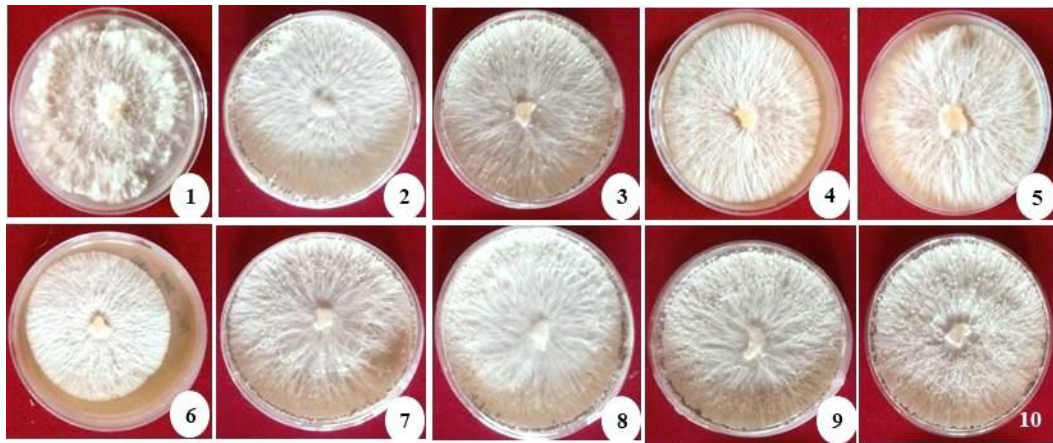
1. Gurha SN, Dubey RS. Occurrence of possible sources of resistance in chickpea (*Cicer arietinum* L.) against *Sclerotium rolfsii* Sacc. Madras Agricultural Journal 1982; 70:63-64.
2. Al-Askar AA, Rashad YM, Absulkhair WM. Antagonistic activity on an endemic isolate of *Streptomyces tendae* RDS 16 against phytopathogenic fungi. Journal of Mycobiology. 2013; 6:509-516.
3. Sennoi R, Jogloy S, Saksirirat W, Kesmala T, Patanothai A. Genotypic variation of resistance to southern stem rot of Jerusalem artichoke caused by *Sclerotium rolfsii*. Euphytica. 2013; 190:415-424.
4. Kumar J, Singh NB, Van Rheenen HA, Johansen C, Asthana AN, Ali M. Growing chickpea in India. International Crops Research Institute for the Semi-Arid Tropics, Patancheru; Indian Council of Agricultural Research, New Delhi, 1997, 60.
5. Azhar H, Muhammad Iqbal SH, Najma A, Zahid AM. Factors affecting development of collar rot disease in chickpea. Pakistan Journal of Botany. 2006; 38(1):211-216.
6. Nene YL, Sheila VK and Sharma BS. A world list of chickpea and pigeonpea pathogens. 5th Edition. International Crops Research Institute for the Semi-Arid Tropics. Hyderabad 502324. 1996;4: 1-27.
7. Vincent JM. Distribution of fungal hyphae in the presence of certain inhibitors. Nature. 1947;159: 850.
8. Sengupta PK and Das CR. Studies on some isolates of *Sclerotium rolfsii*. Z. Pflanzkrankh P. Fl. Schutz. 1970; 77: 582-584.
9. Sulladmath VV, Hiremath PC and Anilkumar TB.. Studies on the variation on *Sclerotium rolfsii* Sacc. in India. Mysore Journal of Agricultural Research. 1977; 11(3): 374- 380.

10. Lingaraju S. 1977. Studies on *Sclerotium rolfsii* Sacc. with respect to its survival in soil. M.Sc.(Ag) Thesis, University of Agricultural Sciences, Bengaluru, Karnataka, India.
11. Pandey HV. Studies on soil borne pathogens producing wilt like symptoms in chickpea. 1984; M.Sc. Thesis, JNKVV, Jabalpur.
12. Nene YL, Sheila VK and Sharma BS. A world list of chickpea and pigeonpea pathogens. 5th Edition. International Crops Research Institute for the Semi-Arid Tropics. Hyderabad 502324. 1996;4: 1-27.
13. Rajalakshmi R, Reddy NPE, Reddy GLK and Devi MC. 2006. Morphological, physiological and biochemical variability among the isolates of *Sclerotium rolfsii* Sacc. Journal of Research ANGRAU. 1996; 5 (1): 52-62.
14. Akram A, Iqbal SM, Qureshi RA and Rauf, C.A. 2007. Variability among the isolates of *Sclerotium rolfsii* associated with collar rot disease of chickpea in Pakistan. Mycopathology. 5: 23-28.
15. Ravindra K, Mishra P, Singh G and Prasad CS. Effect of media, temperature and pH on growth and sclerotial production of *Sclerotium rolfsii*. Annual Plant Protection Science. 2008; 16 (2): 485-547.
16. Chauhan VB, Singh VB, Singh PN and Singh RB. Effect of media and temperature on growth of *Aspergillus fischeri*: A Bio control agent. Annual Plant Protection Science. 2008;16:249-250.
17. Basamma, Naik K, Madhura C and Manjunath L. Cultural and physiological studies on *Sclerotium rolfsii* causing scleotium wilt of potato. International Journal of Plant Sciences. 2012; 7(2): 216-219.
18. Zape AS, Gade RM and Ravindra S. Physiological studies on different media, pH and temperature on *Sclerotium rolfsii* isolated of soybean. Scholarly Journal Agricultural Sciences. 2013; 2(6): 238-241.
19. Shridha C, Chaurasia A, Chaurasia S and Chaurasia S. Pathological studies of *Sclerotium rolfsii* causing foot-rot disease of Brinjal (*Solanum melongena* L.). International Journal of Pharmacy and Life Sciences. 2013; 5(1): 3257-3264.
20. Srividya PV, Lal Ahamed M, Ramana JV and Khayum Ahmmed S. Characterization of *Sclerotium rolfsii* Sacc. causing collar rot in chickpea isolates using cultural and morphological traits. International Journal of Current Microbiology and Applied Sciences, 2018;7(6):3912-3922.

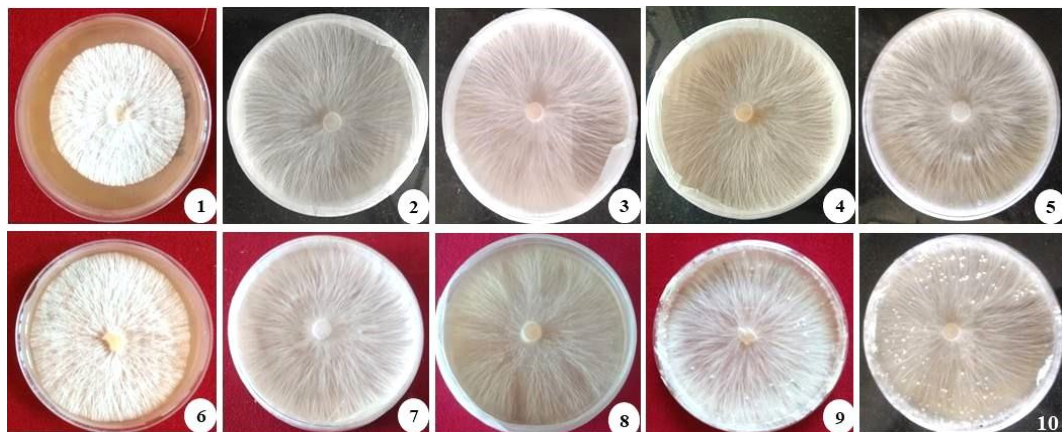
21. Ayed F, Jabnoun-Khiareddine H, Aydi Ben Abdallah R, Daami-Remadi M. Effect of temperatures and culture media on *S. rolfsii* mycelial growth, sclerotial formation and germination. *Journal of Plant Pathology Microbiology*. 2018;9:429.
22. Kushwaha SK, Kumar S, Chaudhary B, Sahu R. Effect of different media, pH and temperature on growth and sclerotia formation of *S. rolfsii* Sacc. Causing collar rot of lentil. *Chemical Science Review and Letters*. 2019;8(29):01-05.
23. Archana TS, Pankaj B, Jagtap SD and Patil BS. Effect of different cultural media on growth of *S. rolfsii* Sacc. Causing root rot of chilli. *International Journal of Current Microbiology and Applied Sciences*. 2019;8(2):3019- 3024.
24. Vaniya GR, Singh P and Deshmukh AJ. Effect of different cultural media on growth of different isolates of *Sclerotium rolfsii* Sacc causing stem rot of Indian bean. *Pharma Innovative Journal*, 2022;11(4):14-9.
25. Virupaksha Prabhu H, Hiremath PC. Bioefficacy of fungicides against collar rot of cotton caused by *Sclerotium rolfsii* Sacc. *Karnataka Journal of Agricultural Sciences*. 2003;16(4):576-579.
26. Arunasri P, Chalam TV, Eswara Reddy NP, Tirumala Reddy S, Ravindra Reddy B. Investigations on fungicidal sensitivity of *Trichoderma* spp. and *Sclerotium rolfsii* (collar rot pathogen) in crossandra.
27. Shirsole SS, Khare N, Lakpale N. Kotasthane AS. Evaluation of fungicides against *Sclerotium rolfsii* Sacc. incitant of collar rot of chickpea. *The Journal of Pharmaceutical Innovation*. 2019;(8):310-316.
28. Sangeetha TV. Studies on root rot/ wilt of soybean. M. Sc. (Ag.) Thesis, University of Agricultural Sciences, Dharwad, Karnataka (India) (2011):104.
29. Sangeeta N, Virupaksha H and Balol G. *In vitro* evaluations of fungicides against *Sclerotium rolfsii* Sacc. causing collar rot of chickpea. *International Journal of Plant Science*. 2022;17(2):163-166.
30. Pawar GS, Gholve VM and Navale MD. In vitro efficacy of Fungicides against stem rot of groundnut (*Arachis hypogaea* L.) caused by *Sclerotium rolfsii* Sacc. *The pharma innovation journal*, 2021;10(12):2150-2154
31. Sahana B, Manjunatha Reddy TB, Mushrif SK, Anjaneya Reddy B and Doddabasappa B.. Evaluation of fungicides against stem rot of capsicum caused by *Sclerotium rolfsii* Sacc. *International Journal of Chemical Studies*, 2020;8(4):306-312.
32. Meena PN and Meena AK. Management of stem rot disease of groundnut (*Arachis hypogaea*) by alternate fungicides. *Indian Phytopathology*, 2023;76(4):1055-1061.

33. Suneeta P, Aiyathan KAA, Nakkeeran S. Evaluation of *Trichoderma* spp. and fungicides in the management of collar rot of gerbera incited by *Sclerotium rolfsii*. *J Pure and Applied Microbiology*. 2017; 11(2):1161-1168.

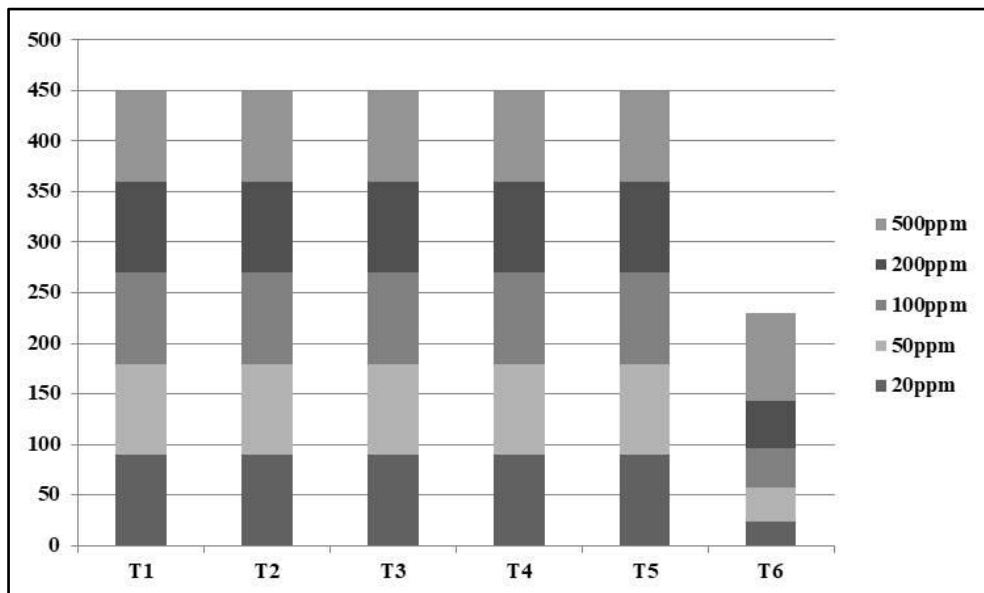
## FIGURES



**Fig. 1** Mycelial growth of *S. rolfsii* isolates on PDA media after 7 days



**Fig. 2** Mycelial growth of *S. rolfsii* isolates on CMA media after 7 days



**Fig 3. Effect of new combi fungicide molecules on the inhibition of radial growth of *S. rolfsii* Sacc.**

**Table 1. A Comparative Analysis of Morphological Characteristics of *S. rolfii*Sacc. on both PDA and CMA**

Isolate	PDA				CMA			
	Colour	Shape	Arrangement	Maturity (days)	Colour	Shape	Arrangement	Maturity (days)
BSR-1	DarkBrown	Spherical	Centralandperipheral	11	Darkbrown	Irregular	Peripheral	10
BSR-2	LightBrown	Irregular	Formedonupper petriplate	17	Darkbrown	Spherical	Peripheral	14
BSR-3	Darkbrown	Spherical	Peripheral	18	Darkbrown	Irregular	Peripheral	22
BSR-4	Brown	Spherical	Scatteredalloverplate	22	Brown	Irregular	Centralised	26
BSR-5	DarkBrown	Spherical	Peripheral	22	Darkbrown	Spherical	Peripheral	14
BSR-6	DarkBrown	Irregular	Scatteredalloverplate	22	Brown	Irregular	Peripheral	19
BSR-7	LightBrown	Irregular	Scatteredalloverplate	15	Darkbrown	Spherical	Scattered	14
BSR-8	Lightorange	Irregular	Scatteredalloverplate	11	Darkbrown	Irregular	Scattered	22
BSR-9	Brown	Spherical	Formedatedgesonupper petriplate	6	Darkbrown	Spherical	Peripheral	10
BSR-10	Brown	Spherical	Scatteredalloverplate	15	Brown	Spherical	Peripheraland Scattered	10

S.No	Isolates	PDA			CMA		
		Colour	Shape	Arrangement	Colour	Shape	Arrangement
1	BSR-1	Fast	Extra white	Thick strands, upward growth and cottony at centre	Darkbrown	Spherical	Dense cottony, aggregated
2	BSR-2	Fast	White	Thin strands, suppressed, wavy like pattern	Darkbrown	Irregular	Thick strands, sparse growth, aggregate at centre, upright growth
3	BSR-3	Fast	White	Thin strands, suppressed, wavy like pattern	Brown	Irregular	Flower like, cottony, Fluffy, branches like clear at centre
4	BSR-4	Fast	Cottony white	Fluffy at margins, wavy appearance	Darkbrown	Spherical	Flower like, cottony, Fluffy, branches like clear
5	BSR-5	Fast	Extra white	Thick strands, sparse, upright growth	Brown	Irregular	Sparse, suppressed thin strands
6	BSR-6	Very fast	Light Orange	Thin strands, thick strands at centre	Darkbrown	Spherical	Thick strands, upright growth (distance between strands is more than others)
7	BSR-7	Moderate	Light white	Suppressed, dense cottony at centre, upright	Darkbrown	Irregular	Suppressed, Fluffy at margins
8	BSR-8	Very fast	Dirty white	Dense mat like appearance	Darkbrown	Spherical	Cottony, dense mat like appearance

9	BSR-9	Moderate	Light white	Fluffy, wavy margins towards at edges, dense at margins	Brown	Spherical	Dense cottony, condensed at centre
10	BSR-10	Very fast	Dirty white and light brownish	Suppressed strands and dense matlike appearance	Dark brown	Irregular	Sparse, suppressed growth

**Table 2. Sclerotial characters of different isolates of *S. rolfii* Sacc. on PDA & CMA**

**Table 3. Effect of new combi fungicides on per cent inhibition of radial growth of *S. rolfsii* Sacc. at different concentrations (ppm).**

Sl. no	Fungicide/Treatments	Percent inhibition of mycelial growth of <i>S.rolfsii</i> *					Mean
		20	50	100	200	500	
1	T1: Tebuconazole 50% + Trifloxystrobin 25% WG	100.0(86.93)	100.0(86.93)	100.0(86.93)	100.0(86.93)	100.0(86.93)	100.0
2	T2: Captan 70% + Hexaconazole 5%	100.0(86.93)	100.0(86.93)	100.0(86.93)	100.0(86.93)	100.0(86.93)	100.0
3	T3: Propiconazole 13.9% + Difenconazole 13.9%	100.0(86.93)	100.0(86.93)	100.0(86.93)	100.0(86.93)	100.0(86.93)	100.0
4	T4: Carboxin 37.5% + Thiram 37.5%	100.0(86.93)	100.0(86.93)	100.0(86.93)	100.0(86.93)	100.0(86.93)	100.0
5	T5: Hexaconazole 4% WP + Zineb 68%,	100.0(86.93)	100.0(86.93)	100.0(86.93)	100.0(86.93)	100.0(86.93)	100.0
6	T6: Carbendazim 12% + Mancozeb 63%	15.69(33.27)	31.10(33.87)	39.16(38.72)	52.77(46.57)	100.0(86.93)	47.74
		0.00	0.00	0.00	0.00	0.00	
	Mean	77.42	80.82	89.86	92.12	100.0	

			Fungicide	Concentration	F × C		
	SEm±		0.315	0.274	0.638		
	C.D at 5%		0.831	0.788	1.916		
*Average of four replication							
Figures in parentheses are angular transformation							

