

# An Automatic Sliding Door: Leveraging Locally Sourced Materials for Innovation

## ABSTRACT

A door is an essential component of a building. It provides security and access to the different parts of a building. In the modern era, when people want everyday life to be completely automated so that work can be done easily in a short amount of time without wasting energy, automatic doors have continued to be fashionable. In addition to being effective and efficient as automation continues to develop rapidly, automatic doors are essential to curbing the transmission of infectious diseases like Ebola and COVID-19. While automatic doors are available in Nigeria, they are imported, thereby shrinking the nation's foreign exchange. Not only that, but they also cost more when imported compared to when they are manufactured locally. In this work, therefore, a cost-effective automatic sliding door was developed using locally sourced materials from Nigeria. The door uses a passive infrared sensor (PIR) to detect a human or an object in a doorway and automatically opens and closes the door by signalling a microcontroller to activate a DC motor, which drives a belt pulley mechanism. The conceptual design of the system was designed and simulated using SolidWorks. Based on the design, calculations were made to determine the appropriate materials to source. The DC motor model was simulated using MATLAB SIMULINK as a physical model to observe how it would behave in the presence of noise, and the PID controller was tuned to give optimal performance using MATLAB Auto tuning. Some materials were locally purchased, while others were constructed through standard workshop methods. A cost-saving advantage of 95.77% and 89.13% were achieved when compared to imported equivalent types from the USA and China, respectively. The sliding door was assembled and subjected to a functionality test, and it was observed that the automatic sliding door successfully detects humans and objects and actuates the motor to open and close the door after the object is out of the set sensing range of 50cm. This work is a step forward in boosting local innovation in Nigeria.

*Keywords: Infrared Sensor, Microcontroller, Automatic Sliding Door, PID, DC Motor, Automation, Innovation*

## 1. INTRODUCTION

Nowadays, people want an everyday life that is completely automated [1-2]. While developing rapidly, automation encourages people to innovate by creating tools that are more effective and efficient [3-4]. An automatic sliding door is one type of innovation applied in shopping malls, public buildings, airports, hospitals, theatres, and so on [5]. They are electro-mechanical doors that open automatically when someone enters and do not need to be opened manually with a touch point like a door handle, door push, lift buttons, flush buttons, taps, and lock [6-7]. Available research has confirmed that manually operated doors pose a risk of transmission of infectious diseases like COVID-19, Ebola, and so on, particularly in places where a significant proportion of users might be ill with a virus [7][8-9]. Therefore, for easy entrance and to limit the risk of disease transmissions, manually operated doors are re-designed to be sensitive to persons or objects in a doorway as they

28 approach, causing the door to open and close automatically after the person or object has  
29 gained entrance. Since they could have manual override mechanisms, such doors can still  
30 be operated manually in the event of automation failure due to power loss or a mechanical  
31 problem. These measures ensure that automatic doors are safe [10].

32

33 The demand for these automatic doors includes situations where both hands of the  
34 pedestrian are needed other than the opening of the door itself or when an equipment  
35 operator needs to come down from the equipment to open the door, thereby increasing  
36 production time and cost [11]. A public environment with a cleanroom concept requires the  
37 installation of an automatic door to avoid external and cross-contamination [12]. Also, people  
38 with disabilities in their hands and arms need someone to give them access to facilities with  
39 conventional doors. However, having automatic sliding doors installed will help improve the  
40 lives of the disabled population so they can use shopping malls and other infrastructures  
41 more effectively [13][14].

42

43 Recent studies have shown various innovative techniques and materials for constructing  
44 automatic sliding doors [15]. [1] utilized RFID and Arduino for enhanced security-focused  
45 automatic door access. This method represents a cost-effective solution for door automation  
46 using RFID tags for door access control and integrating them with an Arduino microcontroller  
47 to automate door operation. This approach emphasizes security and convenience, as the  
48 door only opens for recognized RFID tags. [5, 12] proposed a cost-effective automatic sliding  
49 door system with locally sourced materials and simple circuitry using infrared sensors to  
50 detect the presence of a person or object near the door. [5] developed the system to improve  
51 energy efficiency and user convenience. [12] incorporated a simple belt drive mechanism for  
52 door operation, replacing more complex and expensive components like rack and pinion  
53 systems.

54

55 The automatic doors market size is estimated to grow at a Compound Annual Growth Rate  
56 (CAGR) of 6.75% between 2022 and 2027, and the size of the market is projected to grow  
57 by USD 7,390.33 million. The market surge depends on factors such as the gaining traction  
58 in the construction market, the innovations in hardware components, and the increasing  
59 Infrastructure projects in developing countries like Nigeria [10]. Africa has the lowest  
60 adoption rate, while Asia-Pacific (APAC) and South America have more than double of  
61 Africa's rate to be the highest adopters of automatic doors. The key purchase criteria of  
62 automatic doors are innovation and quality, which are the highest and lowest criteria,  
63 respectively [12]. Currently, automatic doors are imported into Nigeria, and the maintenance  
64 needs are taken care of by foreign manufacturers and technicians. [16] discussed the impact  
65 of Chinese manufacturing investment in Nigeria. It focuses on how this investment is  
66 influencing technology transfer and shaping the industrial sector of the country. This reflects  
67 the gap in innovation between Africa and other continents.

68

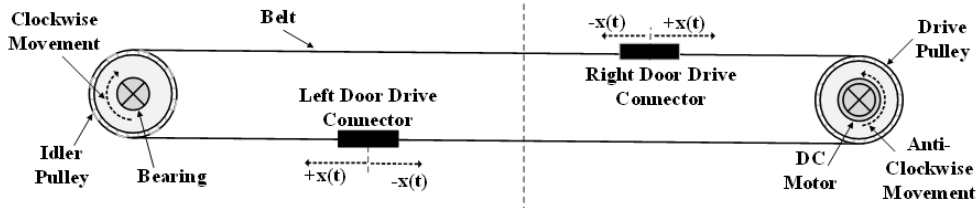
69 This paper proposes a cost-effective automatic sliding door that detects a human or object  
70 using a passive infrared sensor (PIR) on a doorway and automatically opens and closes the  
71 door. The proposed technique uses the PIR to signal a microcontroller to activate a DC  
72 motor, which drives a belt pulley mechanism. The following is the structure of the paper: In  
73 Section 2, the automatic sliding door model was developed based on first principles, and a  
74 conceptual design for the door was done using SolidWorks. The DC Motor was modeled in  
75 SIMULINK; the materials were selected and assembled based on the design. Section 3  
76 covers the simulation result of the DC Motor was presented, and a functionality test of the  
77 constructed door was carried out. In Section 4, a summary of the research outcomes is  
78 provided.

79

80 **2. MATERIAL AND METHODS**

81

82 Fig. 1 displays the sliding door setup, which comprises multiple parts, including a timing belt,  
83 door drive wheels on both the right and left, Pulleys for both Drive and Idler, Bearings, and a  
84 DC motor. The door drive wheels hold both sliding doors in place, and when the motor  
85 powers the belt, the door drive wheels move,  $x(t)$ , either positively or negatively, causing the  
86 doors to slide open or close. Fig. 2 and Fig. 3 show an isometric view and front and back  
87 views of the proposed door system designed using SolidWorks.  
88



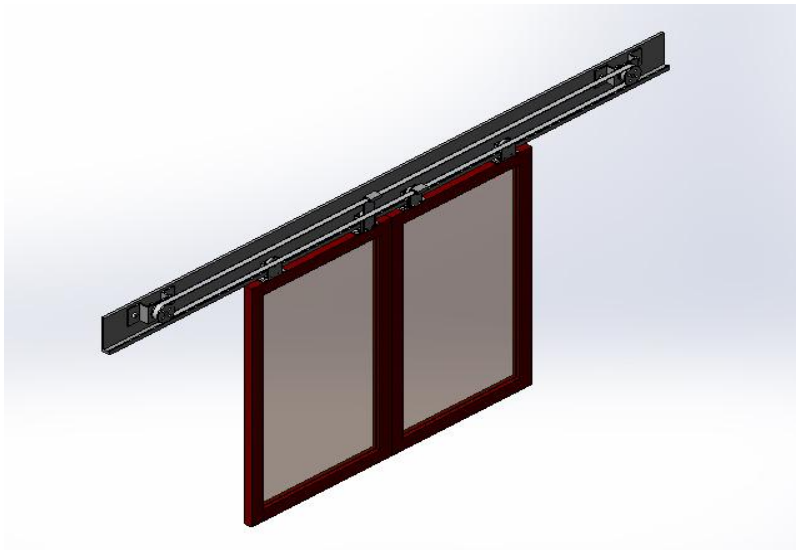
89

90

91

92

**Fig. 1.Schematic diagram of the belt and the two pulley systems**

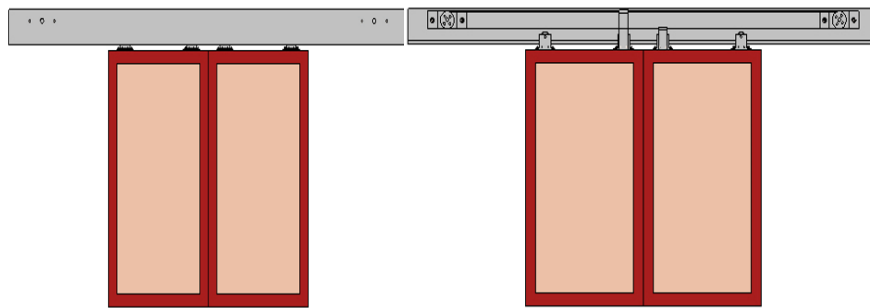


93

94

95

**Fig.2.Isometric view of the sliding door**



96

97

98

99

**Fig.3.Front and back views of the automatic door system**

100

**2.1 Sliding Door Design Calculations**

101

### 102 **2.1.1 Power required to drive the belt with respect to the Speed of the DC motor**

103

104 For this project, a 12-volt bipolar DC motor was utilised, specifically a windshield wiper motor  
105 with a loaded RPM of 147. The motor's angular speed,  $\omega$ , and corresponding translational  
106 maximum velocity,  $v$ , and acceleration,  $a$ , are represented by equations (1), (2), and (3),  
107 respectively.

$$108 \quad \omega = \frac{2\pi \text{RPM}}{60} \quad (1)$$

109

$$110 \quad = \frac{2 \times 3.142 \times 147}{60}$$

111

$$112 \quad = 15.3958 \text{ rad/s}$$

113

$$114 \quad v = \omega r \quad (2)$$

115

$$116 \quad = 15.3958 \times 0.055$$

117

$$118 \quad = 0.8468 \text{ m/s}$$

119

$$120 \quad a = \omega^2 r \quad (3)$$

121

$$122 \quad = (15.3958)^2 \times (55/1000)$$

123

$$124 \quad = 13.0367 \text{ m/s}^2$$

125

126 According to [17], the power required for acceleration of the sliding doors along their sliding  
127 surface,  $P_b$  is defined as follows:

128

$$129 \quad P_b = F_b v = m_p a v \quad (4)$$

130

$$131 \quad = 0.7 \times 13.0367 \times 0.8468$$

132

$$133 \quad = 7.7083 \text{ Watts}$$

134 where  $F_b$  is the applied force on the belt, and  $m_p$  is the pulley mass (0.7kg)

135

136

137

### 138 **2.1.2 Applied moments of the pulleys**

139 The sliding door is modelled based on the Newtonian mechanism, which is responsible for  
140 the motion of the doors. The relationship between the applied moment of inertia and  
141 acceleration of the sliding doors along the horizontal guide is defined in (5), where friction is  
142 considered.

143

$$144 \quad M(t) = 2rmpa + 2\mu r v \quad (5)$$

145

$$146 \quad = (2 \times 0.055 \times 0.7 \times 13.0367) + (2 \times 0.61 \times 0.055 \times 0.8468)$$

147

$$148 \quad = 1.0606 \text{ N.m}$$

149

150 where  $\mu$  is the coefficient of friction ( $\mu = 0.61$ )

151

### 152 **2.1.3 Total weights of the doors**

153

154 When the door is being mounted on a track with the help of rollers, it exerts a downward  
155 force known as weight. This weight is defined in (6).

156

$$157 \quad W = m \times g \quad (6)$$

158

$$159 \quad = 3.05 \times 9.81$$

160

$$161 \quad = 29.9205 \text{ N}$$

162

163 where  $m$  is the mass of the body ( $m_1 = m_2 = 3.05 \text{ kg}$ ), and  $g$  is the acceleration due to gravity  
164 ( $9.81 \text{ m/s}^2$ )

$$165 \quad \text{Total weight of doors} = 2 \times 29.9205 = 59.841 \text{ N}$$

166

#### 167 **2.1.4 Door frictional force**

168

169 An additional force is present between the door rollers and the track. If the rollers undergo  
170 tangential motion relative to the track on which they are supported, the motion is  
171 counterbalanced by the interlocking characteristic of the projecting particles. Frictional force  
172 ( $f_t$ ), defined in (7), refers to this opposing force that operates in the opposite direction of the  
173 motion of the rollers.

174

$$175 \quad f_t = \mu R = \mu W \quad (7)$$

176

$$177 \quad = 0.61 \times 29.9205$$

178

$$179 \quad = 18.2515 \text{ N}$$

180

181 where  $R$  is the normal reaction of the roller ( $N$ )

182

#### 183 **2.1.5 Timing belt tension**

184

185 The effective tension on the timing belt,  $T$  is defined in (8) and the pre-tensioning of the belt  
186 and the two pulleys,  $T_p$  is defined in (9) according to [18].

187

$$188 \quad T = (m \times a) + (W \times \mu b) \quad (8)$$

189

$$190 \quad = (0.7 \times 13.0367) + (0.7 \times 9.81 \times 0.5)$$

191

$$192 \quad = 12.5592 \text{ N}$$

193

$$194 \quad T_p = 2 \times T \quad (9)$$

195

$$196 \quad = 2 \times 12.5592$$

197

$$198 \quad = 25.1184 \text{ N}$$

199

200 where  $\mu b$  is the friction coefficient for Polyurethane and smooth steel pulley ( $\mu b = 0.5$ ).

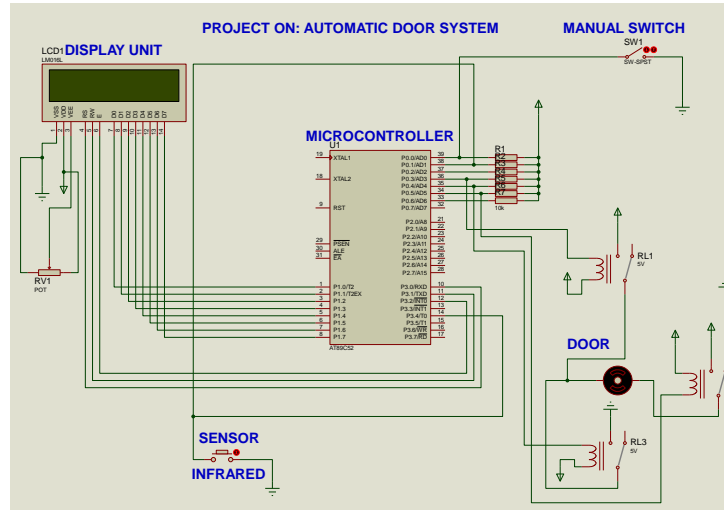
201

## 202 **2.2 Automatic Sliding Door Circuit Model**

203

204 As shown in Fig. 4, there are various subsystems of the automatic sliding door circuit model  
205 which includes the power supply, AT89C52 Microcontroller, 16x4 liquid crystal display

206 (LCD), receiver (light-dependant sensor), and actuator (12 volt bipolar DC motor). The  
 207 microcontroller is a high-performance CMOS 8-bit microcontroller with low power  
 208 consumption and 8k bytes of in-system programmable flash memory. It receives signals  
 209 from the sensor through an analogue-to-digital-to-analogue (ADA) conversion system. When  
 210 the controller receives a positive signal from the sensor, it activates the actuator.  
 211

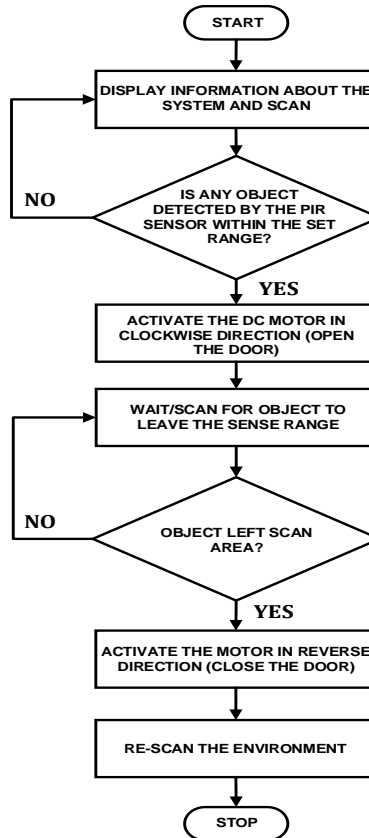


212  
 213  
 214  
 215  
 216  
 217  
 218  
 219  
 220  
 221  
 222  
 223  
 224  
 225  
 226

**Fig.4. Automatic sliding door circuit diagram**

### 2.3 Automatic Sliding Door Algorithm

The flowchart in Fig. 5 describes the operational logic of the automatic sliding door system. At first, the system displays information and scans the environment. If an object is detected at the door, the system activates the DC motor in a clockwise direction to open the door. Otherwise, the motor is activated in the reverse direction, ensuring the door remains closed. The system will then re-scan the area to confirm if it needs to open or stay closed, before eventually stopping the process. This logical sequence ensures that the door operates efficiently, opening for authorized entry and remaining closed otherwise.



227  
228

229 **Fig.5. Automatic sliding door flowchart**

230

231 **2.4 DC Motor Control Model**

232

233 The wiper DC motor control was modelled using the PID controller in the Simulink  
234 environment, as shown in Fig. 6. The transfer function between the applied voltage and the  
235 motor speed is defined as [19]:

236

237 
$$G(s) = \frac{nxK_1}{J(Ls^4 + Rs^3) + (Lb + K_2)s^2 + Rbs} \quad (10)$$

238

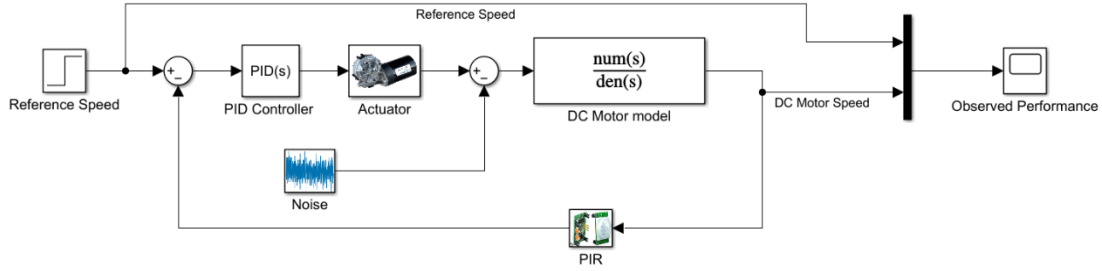
239 where n is the gear ratio,  $K_1$  is the motor torque constant,  $K_2$  is the back EMF constant, J is  
240 the inertia of the motor, load, and gear train, L is the motor inductance, R is the motor  
241 resistance, and b is the viscous friction coefficient. The error difference between the DC  
242 motor angular position and a set reference was minimized using the PID controller as  
243 defined in (11).

244

245 
$$u(k) = K_p e(t) + K_i \int e(t) + K_d \dot{e} \quad (11)$$

246

247



248  
249  
250  
251  
252  
253  
254  
255  
256  
257  
258  
259  
260  
261  
262  
263

**Fig.6.Sliding door DC motor control model**

**2.5 Selection of Materials**

The construction of the automatic sliding door involves selecting materials based on the design model and specifications. The materials used were locally sourced in Nigeria, as shown in Table 1. However, the table shows that by sourcing materials locally in Nigeria, there is a 95.77% cost saving compared to importing materials from the USA [20] and an 89.13% cost saving compared to importing from China [21]. This substantial reduction in cost demonstrates the cost-effectiveness of using locally sourced materials for the construction of an automatic sliding door.

**Table 1. Compared prices of the automatic sliding door materials**

Materials	QTY	Materials Sourced locally in Nigeria (Naira)	Materials Sourced from United States - Sanway (USD)	Materials Sourced from China - OREDY ORD-180 (Yuan)
Pulley	2	N3,000.00	\$36.00	
Belt	1	N1,500.00	\$15.00	
Belt Connector	2	N1,000.00	\$28.00	
Motor	1	N7,000.00	\$250.00	
Controller + 2 Sensors	+ 1			
Electronic Components		N18,000.00	\$385.00	Y1,425
Roller	8	N3,000.00	\$112.00	
Track	2	N1,000.00	\$200.00	
Door Stopper	2	N700.00	\$10.00	
Battery + Power Switch	1	N15,900.00	\$85.00	
Sliding Door	2	N25,000.00	\$300.00	Y2,300.00
<b>Total</b>	<b>22</b>	<b>N76,100.00</b>	<b>\$1,421.00</b>	<b>Y3,725.00</b>
<b>Total cost conversion to local currency</b>		<b>N76,100.00</b>	<b>N1,800,000.00</b>	<b>N700,000.00</b>

264  
265

**2.5.1 Description of Selected Materials**

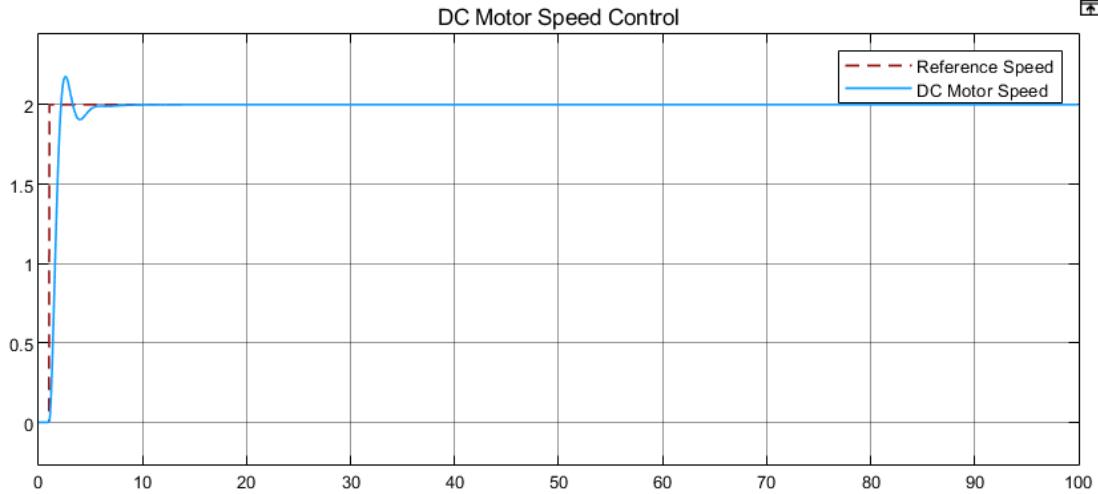
266 The description of the materials used for this design model is as follows:

- 267  
268  
269  
270  
271  
272  
273  
274  
275  
276  
277  
278  
279  
280  
281  
282  
283  
284  
285  
286  
287  
288  
289  
290  
291  
292  
293  
294  
295  
296  
297  
298  
299  
300  
301  
302  
303  
304  
305
1. **Battery:** A 12V battery capable of running the motor at a desired speed was procured. It has a long-running life and is suitable for the project.
  2. **Belt:** A timing belt of a recycled engine was chosen based on the selected timing pulley (Polyurethane material). Their pitch matched perfectly, and the belt was available and affordable. It possesses the required properties to transmit the torque, and the length is long enough for our sliding door.
  3. **Belt Connector:** The selected material for this part is an aluminium alloy. It was shaped to different heights to fit the distance between the upper and lower sides of the timing belt. It was perforated for bolt passage used to fasten to timing belt and movable doors.
  4. **DC Motor:** A 12volt windshield wiper motor, which has the required torque needed to overcome the friction between the roller and the rail, was used to actuate the pulley-belt mechanism of the sliding door. It rotates clockwise and anticlockwise, making it suitable for double-direction movement of the sliding door. And most importantly, it is available and cost effective than procuring a stepper motor or other form of actuating device.
  5. **Door Stopper:** The door stopper used is a typical aluminium framed door panel stopper. The door stopper is made of steel and has a rubber section that serves as shock absorber.
  6. **Frame:** This is the fixed part on which the movable doors are mounted. A wooden frame (an Iroko wood) was selected due to its durable and strong properties. And it also works easily with power and hand tools, and it is ever ready to accept nails and screws.
  7. **Pulleys:** A camshaft pulley of a recycled engine was selected for the pulley. This may not have been the best option, but the fact that we avoided the high cost of producing a new one made it worth it. The timing pulley is made of stainless steel, and it has the necessary properties to transfer the torque from the motor, which made it the best suit for the design after all.
  8. **Roller:** The roller used is a typical roller used in aluminum window work. It has the necessary features and configurations to keep the door well always positioned on the track. It is made of steel.
  9. **Sliding door panel:** The selected material for this part is an aluminum alloy and transparent flat blue glass. Aluminum alloy metal is known for its light weight, good corrosion resistivity and decorative applications. These properties made it the best choice for this part.
  10. **Track:** This part serves as a runway for the sliding door. The upper and down tracks are made of aluminum alloy, which is hard enough to carry the weight of the door hung on both tracks without bending.

### 3. RESULTS AND DISCUSSION

306  
307  
308  
309  
310  
311  
312  
313  
314  
315

The performance of the DC motor used for the actuation of the sliding door was simulated in MATLAB, as shown in Fig. 7. The DC motor was modelled as a physical system with noise in SIMULINK to observe how the wiper motor will perform when subjected to a reference speed of 2 rad/s. During the modelling, the PID was tuned using SIMULINK autotune at proportional gain,  $P = 4.255$ , integral gain,  $I = 1.694$ , and derivative gain,  $D = 2.519$ . However, the DC indicated with blue line was able to track the reference speed indicated by red dotted line at a stable rate at 8 seconds.



316  
317

318 **Fig.7.Performance of the DC motor model**

319  
320  
321

### 3.1 Functionality Test

322  
323  
324  
325  
326  
327  
328  
329  
330  
331  
332  
333  
334  
335  
336  
337  
338

The sliding door was assembled and subjected to a functionality test using a PIR sensor to detect humans, as shown in Fig. 8 and Fig. 9. The PIR sensor has a wide lens range sensitivity of 7 meters and a 110-degree x 70-degree detection range. It has two slots, each one of them is made of a special material that is sensitive to infrared. When a warm body like a human or animal passes by, it first intercepts one-half of the PIR sensor at a set range of 50cm. This causes a positive differential change between the two halves. These change pulses are detected under operation situations like avoiding heating systems or warm air drifts. The sensor was calibrated to send a signal to the microcontroller whenever an object approached the sensing range, and the microcontroller actuated the DC motor to open the door through a belt pulley mechanism. The automatic sliding door successfully detects humans and actuates the motor to open and close the door after the object is out of the set sensing range. However, there is a manual operation mode incorporated in the design for situations whereby the automatic dictation by the PIR fails when the operation situations are not met. This mode uses a push button (switch) to open and close the door when an object enters and leaves the door. It is also considered as a save mode to avoid trapping the object or human when the operation in auto mode fails.



339  
340  
341  
342

**Fig.8.Front view of the model of an automatic sliding door**



343  
344  
345  
346

**Fig.9.Back view of the model of an automatic sliding door**

347 **4. CONCLUSION**

348

349 An automatic sliding door system was designed, constructed, and tested. The conceptual  
350 design of the system was designed and simulated using SolidWorks. Based on the design,  
351 calculations were made to determine the appropriate materials to source. The DC motor  
352 model was simulated using MATLAB SIMULINK as a physical model to observe how it  
353 would behave in the presence of noise, and the PID controller was tuned to give optimal  
354 performance using MATLAB Auto tuning. Some materials were locally purchased, while  
355 others were constructed through standard workshop methods. A cost-saving advantage of  
356 95.77% and 89.13% were achieved when compared to imported equivalent types from the  
357 USA and China, respectively. The sliding door was assembled and subjected to a  
358 functionality test to detect a human or object using a PIR sensor on a doorway and  
359 automatically opening and closing the door. The proposed technique uses the PIR to signal  
360 a microcontroller to activate a DC motor, which drives a belt pulley mechanism. It was  
361 generally observed that the automatic sliding door successfully detects humans and objects  
362 and actuates the motor to open and close the door after the object is out of the set sensing  
363 range of 50cm. This work is a step forward in boosting local innovation in Nigeria. As it will  
364 be cheaper for other African countries with new constructions and renovations to buy from  
365 Nigeria which will drive the externally generated revenue of the country. It is recommended  
366 that low speed high torque DC motor, pulley, and timing belt, from different sources are  
367 recycled and marketed by heavy equipment parts recyclers in Nigeria. The aluminium  
368 sections, including sliding door panel frame, belt connector, and track can be researched  
369 more on for continuous improvement, designed, manufactured, and marketed by aluminium  
370 products manufacturers in Nigeria. The steel and rubber sections, including door stopper  
371 and roller can be researched more on for continuous improvement, designed, manufactured,  
372 and marketed by steel and rubber products manufacturers in Nigeria. Long range motion  
373 sensors are not readily available locally, DC motor, pulley, and timing belt are not locally  
374 manufactured, therefore, the design and manufacturing of these component in Nigeria, is  
375 vitally important.

376

377 **COMPETING INTERESTS**

378

379 Authors have declared that no competing interests exist.

380

381 **AUTHORS' CONTRIBUTIONS**

382

383 All authors contributed to the completion of this work through collaboration. The final  
384 manuscript was reviewed and approved by all authors.

385

386 **REFERENCES**

387

- 388 1. Kristyawan Y and Rizhaldi AD. An Automatic Sliding Doors Using RFID and  
389 Arduino. International Journal of Artificial Intelligence & Robotics (IJAIR). 2020;  
390 2(1):13–21.
- 391 2. Fröhlich P, Baldauf M, T. Meneweger, et al. Everyday automation experience: a  
392 research agenda. Pers UbiquitComput. 2020; 24:725-734. [Online]. Available:  
393 <https://doi.org/10.1007/s00779-020-01450-y>
- 394 3. Zulfauzi. RancangBangun Pintu Geser OtomatisBerkbasis Android  
395 MenggunakanJaringanWifi: Jurnal Teknik InformatikaPoliteknikSikayu (TIPS).  
396 2016;5(2):34-40. STMIK Mura Lubuklinggau.
- 397 4. Khogali HO and Mekid S. The blended future of automation and AI: Examining some  
398 long-term societal and ethical impact features. Technol Soc. 2023; 73:102232.doi:  
399 10.1016/j.techsoc.2023.102232.

- 400 5. Gaur S. Automatic Door Sliding Control System. Journal of Emerging Technologies  
401 and Innovative Research (JETIR). 2019;6(4):589–595.
- 402 6. Nishida D et al. Development of intelligent automatic door system. in Proceedings -  
403 IEEE International Conference on Robotics and Automation, 2014.
- 404 7. Hanmer G. Automatic doors: the simple technology that could help stop coronavirus  
405 spreading. The Conversation. 2020. Accessed: February 5, 2022. Available:  
406 [https://theconversation.com/automatic-doors-the-simple-technology-that-could-help-](https://theconversation.com/automatic-doors-the-simple-technology-that-could-help-stop-coronavirus-spreading-135420)  
407 [stop-coronavirus-spreading-135420](https://theconversation.com/automatic-doors-the-simple-technology-that-could-help-stop-coronavirus-spreading-135420).
- 408 8. van Seventer JM and Hochberg NS. Principles of Infectious Diseases:  
409 Transmission, Diagnosis, Prevention, and Control. International Encyclopedia of  
410 Public Health. 2017;22:22-39. doi:10.1016/B978-0-12-803678-5.00516-6.
- 411 9. Blanco-Penedo MJ et al., "Risk perception of Ebola virus disease and COVID-19  
412 among transport drivers living in Ugandan border districts. Front. Public Health.  
413 2023;11:1123330. doi: 10.3389/fpubh.2023.1123330.
- 414 10. Technavio. Automatic Doors Market by End-user, Product and Geography -  
415 Forecast and Analysis 2023-2027. Technavio. 2023. Accessed: January. 31,  
416 2024 Available: [https://www.technavio.com/report/automatic-doors-market-industry-](https://www.technavio.com/report/automatic-doors-market-industry-analysis)  
417 [analysis](https://www.technavio.com/report/automatic-doors-market-industry-analysis).
- 418 11. Kiru MU, Belaton B, Mohamad SMS, Usman GM and Kazaure AA. Intelligent  
419 Automatic Door System based on Supervised Learning. 2020 IEEE Conference on  
420 Open Systems (ICOS) Kota Kinabalu, Malaysia. 2020;43-47, doi:  
421 10.1109/ICOS50156.2020.9293673.
- 422 12. ChomoDIG, Yawas DS, and Johnson ZS. Development of an Automatic Door  
423 System. American Journal of Engineering Research (AJER). 2018;7(5):168-173.
- 424 13. Zungeru, AM, KoloJG, and Olumide I. A Simple and Reliable Touch sensitive  
425 security System. International Journal of Network Security & Its Applications  
426 (IJNSA). 2012.
- 427 14. Zungeru, AM, EduU and Garba, A. Design and Implementation of a Short Message  
428 Service Based Remote Controller. Computer Engineering and Intelligent systems.  
429 2012.
- 430 15. Amole A, et al. Design and implementation of a prototype active infrared sensor  
431 controlled automatic sliding door for mitigation of coronavirus disease 2019 (COVID-  
432 19). Journal of Electrical, Control and Technological Research. 2020;2:1-17. doi:  
433 10.37121/jectr.vol2.122.
- 434 16. Chen Y. 'Africa's China': Chinese manufacturing investment in Nigeria and channels  
435 for technology transfer. Journal of Chinese Economic and Business Studies.  
436 2021;19(4):335-358. doi: 10.1080/14765284.2021.1943184.
- 437 17. Haliday D, Resnick R and Walker J. Fundamentals of Physics. (6th edition). New  
438 Delhi: John Willey and Sons Inc. 2006.
- 439 18. Kurmi RS and Gupta JK. A textbook of machine design. New Delhi: Eurasia  
440 publishing house (Pvt) Ltd; Ram Nagar. 2005.
- 441 19. Hammoodi SJ, Flayyih KS, and Hamad AR. Design and implementation speed  
442 control system of DC motor based on PID control and matlab Simulink. International  
443 Journal of Power Electronics and Drive Systems. 2020;11(1):127-134. doi:  
444 10.11591/ijpeds.v11.i1.pp127-134.
- 445 20. Sanway Technology. ES 200 automatic door opener controller menu instruction,  
446 door parameter and status reading and setting. Detail instruction of setting and LED  
447 display on ES 200 controller. Accessed: January 15, 2024. Available:  
448 <https://www.sanwaydoor.com/es-200-automatic-door-menu-instruction/>.
- 449 21. Oredy Technology. Automatic sliding door operator. Accessed: January 15, 2024.  
450 Available: <https://www.oredy.cn/collections/automatic-sliding-door>.