

# Community Engagement in Human Immunodeficiency Virus/Acquired Immunodeficiency Syndrome Analysis at the Grassroots in Rural Tanzania: A Case of Visual Problem Appraisal for AIDS and Rural Development

## ABSTRACT

Missed grounded analysis of Human Immune Deficiency Virus/ Acquired Immune Deficiency Syndrome Analysis (HIV/AIDS) at grassroots level has led to persistence of pandemic in rural areas. This pseudo-experimental study aimed at exploring the potentiality of Visual Problem Appraisal AIDS and Rural Development (VPA A & RD) in supporting grassroots capacity to make informed choices through grounded analysis of HIV/AIDS problem. Primary data were collected through VPA A & RD workshops, Focus Group Discussions (FGDs), key informant interviews, physical visits and observations. The secretariat of Matombo Division Farmers Groups' Local Network (MVIWATAMA) was involved directly in a strategic selection of 20 (14 males and 6 females) workshop participants from Kifindike, Tawa, Uponda, Kiswira and Konde villages. The collected data, narratives and observations were verified and compared with relevant literature for interpretation and interrelations. The tool was found to be useful in engaging, empowering and supporting small scale farmers' informed choices. In addition, findings indicate that persistence of HIV/AIDS in rural areas is due to improper analysis of the problem and review of HIV/AIDS policy. The study among other things recommends the establishment of HIV/AIDS policy working paper and incorporation of VPA potential in Tanzania universities' curricula to enhance critical thinking among graduates.

*Key words: Visual Problem Appraisal; problem analysis; HIV/AIDS; small-scale farmers*

## 1. INTRODUCTION

Sub-Saharan Africa is the region that is severely affected by AIDS tragedy. Tanzania is within Sub-Saharan Africa. The Tanzania Bureau of Statistics (NBS) [1] through the Tanzania Human Immune Deficiency Virus (HIV) Indicator Survey (THIS) of 2022-2023, estimated Tanzania to have about 1,548,000 adults living with HIV with high prevalence among women than men. This marks a slight decrease from 6% in 2007-2008 to 4.3% in 2022-2023 as reported by Tanzania Human Immune Deficiency Virus/ Acquired Immune Deficiency Syndrome Analysis (HIV/AIDS) and Malaria Indicator Survey (THMIS) [2]. However, the data underscore the persistent nature of the pandemic in Tanzania.

Human Immune Deficiency Virus/ Acquired Immune Deficiency Syndrome Analysis (HIV/AIDS) has a major impact on economic progress; hence deepening poverty and food security especially in rural areas. Tanzania through her development vision 2025 envisages eradicating extreme poverty by 2025,

through attaining a consistent economic growth of 6% for at least 6 years. Under the prevalence and impact of HIV/AIDS, this growth has not been achieved and will not be achieved. This is also proved by [3] who pointed out that affected households by HIV/AIDS were more likely to be impoverished compared to those not affected by the disease. The impact of HIV/AIDS can lead to the reduction of household income by 66% to 80% (for care giving, funeral costs, etc) in rural areas. Other impacts in agricultural sector include: indirect loss in crop production and productivity as a result of losing trained personnel and experts such as extension workers, and traditional responsibilities for caring for the sick often rest with women in rural areas. Women in HIV/AIDS affected spend less time on agricultural production [4].

There is a clear mandate, evident in both policy frameworks and institutional structures, to facilitate the battle against the AIDS pandemic, coupled with a genuine willingness to address this pressing issue." Several organizations implement HIV/AIDS interventions in Tanzania so as to mitigate its impact in rural areas. Also, at policy level, the government commits countrywide response to HIV/AIDS in terms of prevention, care and support of those affected by pandemic and mitigation of its impacts [5]. These include provision of anti-retro viral therapy, testing and counseling centers. According to National HIV/AIDS Policy (2001), HIV/AIDS is a priority issue. Based on this, Tanzania allocates funds in its annual budgets to central, regional and district government to respond to the pandemic. It also dedicates financial support to civil groups to provide information and services to reduce transmission and to care for the people living with HIV/AIDS.

However, the Human Immune Deficiency Virus (HIV) Impact Survey (THIS) 2022-2023 indicated that new HIV-related infections were being registered in rural areas on daily basis [1]. The survey indicated approximately 60,000 new cases of HIV infections among adults in the country. In addition, the study by Wang *et al* [6] indicated that among HIV-infected rural residents were significantly associated with never testing for HIV. Consequently, it underscores the prevalence of AIDS as a critical issue in rural areas. This observation highlights a considerable rural-urban disparity with urban areas receiving more attention and accessible to control and prevention information compared to rural areas. It also suggests a potential inadequacy in responses from rural development organizations and policies aimed at mitigating the impacts of HIV/AIDS. Again, these problems are further aggravated by missed ground analysis of HIV/AIDS problem at grassroots level. This becomes a challenge for policy makers and institutional professionals that sought to appropriately address the problem, but unfortunately, they did not know how due to incompetence in HIV/AIDS innovative issues. This resulted to mal-communication, as revealed by [7], who indicated that mal-communication in AIDS awareness campaign created pandemic persistence, since in proliferation of methods to disseminate information, values, feelings and cultural ethos get marginalized or completely lost. Consequently, this led to improper address of the problem due to insufficient

capacity building at grassroots level so as to make their informed choices within their values, frame of reference, cultural issues and feelings for proper address of the problem. All these issues rooted from a major problem which relates to a lack of sustainable professional training with much focus on AIDS and and Rural Development (A&RD) problem analysis and policy design from university levels in Tanzania.

The Visual Problem Appraisal AIDS and Rural Development (VPA A & RD), a film-based methodology, serves as innovative strategy for slow but sustainable long-term empowerment to rural development professionals in problem analysis and policy design. However, this method is yet to be fully utilised within Tanzanian universities and rural development institutions. According to Witteveen *et al*, [8], the tool stimulates interaction, analytical capacity; re-create a slow but a long-term sense of empowerment to grassroots. In addition, it facilitates mediated-dialogue, and supports the process of making informed choices for future actions, which leads to meaningful problem and solutions formulations. Therefore, it is a useful tool in community engagement; in the sense that grassroots like small scale farmers can take concrete measures to address HIV/AIDS related problem(s) based on their priorities, realities and needs. This supports the argument by [9] that there is a need for communities to have a strong sense of ownership of the process from the beginning to be able to maintain motivation and commitment and integrate learning into their future practice (s). This potential was envisaged to minimize the impacts of HIV/AIDS to sustainability in rural development especially in Matombo division in Morogoro, Tanzania. This presents a challenge to universities and rural development organizations in Tanzania who are the stakeholders responsible for addressing AIDS and rural development, as well as institutional incompetence.

## **1.2 Literature Review**

### **1.2.1 Integrating Visual Problem Appraisal: A Theoretical Review**

Visual Problem Appraisal (VPA) is film-based innovation to explore and facilitate coordination for better decision making through team work. The VPA uses and follows Rapid Rural Appraisal (RRA) methodologies and principles, but it deviates from this class of exploratory methods as visual diagramming as is a less prominent tool for extracting information on behalf of the outsiders [10]. In VPA the information in the story is told, while in the visuals, the context of the person being interviewed is portrayed. Studies have indicated that the tool has been effective in the analysis of complex problems in natural resources management and analysis of HIV/AIDS as a developmental problem [10, 11]. This is because VPA enhances the analysis of a wicked problem and sharpens the analytical competencies as it allows semi-interaction between users and real stakeholders without discomforting or harassing them. As a result, this facilitates effective learning in natural environment [12].

Furthermore, in the context of AIDS and Rural Development Visual Problem Appraisal (A&RD VPA), Witteveen and Lie [11] indicated that it is lifelike film-based innovation to explore HIV/AIDS encapsulated issues. It also facilitates discussion and coordination of teams for better decision making. This is true as HIV/AIDS complexity needs new approach for analysis. However, most of studies conducted in Tanzania have been too explorative. They only considered the effectiveness of prevention strategies on transmission of HIV to community members [13,14, 15]. With regards to the engagement of community in HIV/AIDS research, Karris *et al* [16] highlights that the failure of academia in successful engaging communities in HIV analysis research is due to power-imbalance, poor understanding of culture and scientific incompetency. In addition, the study by Hausken and Ncube [17] in African countries indicated that the cost-effectiveness of community HIV disease prevention strategies is questionable. The researchers reported free riding by both policy makers and international community in their contributions towards epidemic prevention. This is due to the fact that the way international community converts funds may differ with the policy maker's priorities in the recipient country. Hence, the process of HIV problem analysis for proper intervention might be affected. This indicates that academia, organizations and policy makers need to employ new and innovative learning methodology in HIV/AIDS grounded problem analysis for proper impacts mitigation in rural areas. However, there is no documented evidence for non-governmental organizations especially universities and colleges in Tanzania to use Visual Problem Appraisal (VPA) in HIV/AIDS social learning and HIV/AIDS analysis and policy agenda setting at local level.

In terms of policy, the study raises questions about the development strategy that emphasizes small scale farmers amongst community members to derive their own communication strategy as the central focus of fighting against HIV/AIDS and impacts mitigation. This is also true in order to reach Millennium Development Goal (MDG 6) which focuses on combating HIV/AIDS, malaria and other diseases. According to [18] among the stated key actions in MDG 6 is investing in greater resources in HIV prevention, including provision of accurate information through appropriate media and education systems. The study, therefore, through pseudo-experimental study, tested the potentiality of VPA A & RD that was developed through filmed based stakeholders of Zambia, Ghana and Tanzania in supporting grassroots' capacity in rural Tanzania to make informed choices through grounded analysis of HIV/AIDS problem.

### **1.2.2 Empirical Review on the Effectiveness of Community Engagement Strategies in HIV/AIDS Prevention and Control**

The exploration study on lessons on community engagement in HIV research by Karris *et al* [16] revealed that community members are not successfully engaged in HIV research as their studies do not meet their interests and wants. They found that there has been a lack of grassroots participation and maximal involvement of HIV-infected due to poor understanding of their cultural contexts,

power differential and poor scientific competency. In addition, Mpondo *et al.* [14] in their study on the possible role of the key populations on HIV Epidemic in Tanzania found that the accessibility of established Medically Assisted Therapy (MAT) as part of HIV prevention strategy at Mwananyamala Hospital in Dar es Salaam, Tanzania was poor to most Tanzanians. They suggested strategies such as promoting condom use, use of water-based lubricants, screening and treating Sexual Transmitted Infections (STIs), HIV counseling and testing, and early treatment of HIV as important measures to prevent HIV transmission in the country. However, the study on social and cultural determinants of the spread of HIV/AIDS, STIs and gender-based violence in high-risk areas by Jeckoniah [15] found that low risk perception and marital instability accelerated inconsistent condom use and having many sexual partners.

Furthermore, in the study on trends in the uptake of voluntary counselling and testing for HIV in rural Tanzania in the context of the scale up of antiretroviral therapy, Isingo *et al.* [13] indicated that participants attending Voluntary Counselling and Testing (VCT) increased by 7% from 2004 to 2007 and among HIV-infected persons from 14% to 25%. However, due to poor mobilization, about 26% of VCT attendees did not complete two rounds after two-years and there were increasing number of sexual partners in the period of 12 months. Their study found further that engagement of communities in accessing antiretroviral therapy was effective in early years. Despite the VCT services attracting HIV-infected and high-risk individuals, the morale for uptake of the services dropped significantly after two years of operation. This study is supported by Wang *et al.* [6] and [13] who found that most of HIV infested rural residents and youth, did not test for HIV. As a result, this raises questions on the effectiveness of approaches employed for mobilizing rural residents towards voluntary counselling and testing.

In spite of the fact that community engagement strategies in HIV/AIDS prevention and control are employed, but their effectiveness in the prevention and control of the epidemic is questionable. For instance, Karris *et al* [16] revealed poor community engagement in HIV analysis research due to power differences, lack of understanding of culture and scientific incompetency. Isingo *et al.* (13) indicated that despite the attendance in VCT centers, attendees increased sexual partners; inadequate strategies to mobilize rural residents in HIV testing [6]; poor access of Medically Assisted Therapy (MAT) as part of HIV prevention strategy [14]. In addition, there is scant information on studies that explore the integration of visual problem appraisal methods in HIV/AIDS problem analysis in Tanzania. AIDS and Rural Development Visual Problem Appraisal (A&RD VPA) as innovative learning methodology allow semi-interaction between users and real stakeholders (understanding their culture), to guarantee power balance (in problem analysis). Therefore, this study, intended to investigate the potentiality of the A&RD VPA in HIV/AIDS grounded problem analysis, focusing on small-scale farmers in Morogoro district, Tanzania.

## 2.0 METHODOLOGY

### 2.1 Description of the Study Area

The study was conducted in Matombo division which is located in Morogoro district, Morogoro Region – Tanzania. Five villages out of ten villages of Tawa and Kisemu wards of Matombo division were selected as sample villages for this research. I selected these four villages on their location and eventual high HIV/AIDS prevalence. They are nearby Morogoro-Selous Game Reserve (for tourists) road pass through the division's villages and market centers. This creates high morbidity of people, since the area is susceptible to HIV infections due to interaction; hence vulnerable to impacts of HIV/AIDS. Most members of MVIWATAMA reside from these villages. The villages include:

*(i) Uponda:* Is situated North-East of Tawa trading centre. The village is inhabited by crop farmers. It is bordered in the East by Mvuha River whereby small mining activities take place. Bananas, cassava, simsim and maize are major crops grown in this village. Villagers keep livestock like: local chicken, and goats. It has poor road network. This results into few visits by development practitioners and other guests in the area, hence the community is not accessible to HIV/AIDS information.

*(ii) Tawa:* Is a center for ward local government administration. Bananas, pineapples and, cassava are major crops. Villagers keep livestock like: local chicken, and goats. It is a fast-growing village to peri-urban center. It has a modern agricultural market constructed by the support from MVIWATA-The Network of Farmers' Groups in Tanzania; this makes it as the center of trading activities. There is also one Center for Farmers and Agriculture (CFA) and one dispensary which have just started Voluntary Testing and Counselling (VTC) services. It is situated along Tawa-Morogoro Municipal Road. The infrastructure creates high morbidity and interaction among people in the community. The community is vulnerable to HIV infections.

*(iii) Kifindike:* This village is situated along Tawa-Morogoro Municipal Road. The village is inhabited by crop farmers. It has fertile soil and supports such crops as bananas, beans, pineapples, and cassava. Villagers keep livestock like: local chicken and goats. Almost  $\frac{3}{4}$  of the village land is under lease of Matombo Roman Catholic (RC) Mission that acquired 99 years Right of Occupancy lease. They spend almost their households' income in hiring land from the RC mission. In coupling this with HIV/AIDS impacts among affected households, it makes the situation worse especially to small scale farmers among others in the community.

*(iv) Kiswira:* Bananas, pineapples, maize, millet, upland rice and cassava are major crops in the area. Villagers keep livestock like: local chicken, pigs and goats. This village is situated along Tawa-Morogoro Municipality and is also nearby Morogoro-Selous Game Reserve Road (for tourists). Also mining activities take place in the area. It is a collection centre for bananas whereby

vehicles from Dar es Salaam come to load bananas. The community is vulnerable to HIV infections

(v)*Konde*: It is situated in South-East from Tawa center. It is inhabited by crop farmers. It has poor road network. This results into few visits by development practitioners and other guests in the area, hence not accessible to HIV/AIDS information. Bananas, pineapples, upland rice, cloves and cassava are major crops and local chicken and goats are kept by villagers.

### **Rural Livelihood System of the Area**

In the context of rural livelihood of Tawa and Kisemu small scale farmers, HIV/AIDS is a source of deterioration of livelihood. In order to have a good picture of the problem in Matombo division, it was necessary to understand the livelihood systems of the area and how analysis and concrete actions can help to preserve these assets and livelihood strategies. According to [19], livelihood comprises of assets like; social, human, physical, financial and natural assets; transforming processes and strategies.

### **Social Assets**

**Social Capital: (the social resources)** in the area includes: small scale farmers' local networks and groups). In almost 5 out of 10 small scale farmers in the area belong to a group. Being in group; they have the opportunity to share information, to helping each other and monthly contribution. The generated amount is saved in small-scale managed SACCOS. This money in later stages is used to support a living of each other. Also, the division has an established small scale farmers' local network called MVIWATAMA which is linked to The National Network of Farmers' Groups (MVIWATA). They hold monthly meetings on rotational basis to discuss issues which impact positively or negatively on their livelihood. HIV/AIDS is slowly disturbing this kind of capital. Death of some active members and leaders leads to disintegration or under performance of some groups. A recent example is the disruption of road rehabilitation and maintenance group "TWIKINDE" from Tawa to Milawilila villages due to impacts of HIV/AIDS. The group secretary was diagnosed and found contracted with HIV/AIDS. He didn't receive any counseling and ARV support. He finally died. He was a very active leader. Three years back the group was very strong and the road was passable in all weather. Since his death, the group disintegrated and the road is mismanaged and left with holes; hence difficult passage during long rainy season.

### **Natural Assets**

Natural capital refers to the stocks of natural resources, such as land use. In the Uluguru Mountains and adjacent lowlands, land was traditionally owned by women through the clan-ship system. However, in recent years, land ownership has shifted to men within the household. This limits the involvement of women and youths in income-generating activities aimed at improving livelihoods. This is

particularly significant in activities like fruit cultivation, which could be used in jam processing to generate income. The situation has led girls to involve in prostitution to secure income as sources of livelihood and eventually contract with HIV. Also, the situation leads to severe youths' rural-urban migration. A long-term future of the youths in towns has been not very fruitful. They end up brought home while contracted with HIV/AIDS and become burden to the family of which they divert their income in caring for the diseased and burial costs.

### **Financial Assets**

**Financial capital-the capital base** includes for example cash, credit/debt, and savings. There are two (2) small-scale farmers' managed SACCOS in Tawa and Kisemu wards. They provide capital for income generation activities. Women and girls take loan to establish small café food vending. This kind of a business keeps women and girls up to late hours of night, increasing women and girls' susceptibility to HIV infections. Sometimes, they may be attracted to well off customers who may have contracted HIV. Also, SACCOS in the area have registered 50% as overstayed loans from small scale farmers. In most cases the borrowed money is diverged to buy medicine or used for transportation to hospital for those caring HIV/AIDS positive people, instead of establishing income generation activities.

### **Human Assets**

**Human capital:** include skills and knowledge. People in the areas utilize their indigenous knowledge to meet their livelihood needs or address challenges. For example, they use post harvest pest control methods (using ashes) in controlling Large Grain Stalk Borer in Maize (Uponda and Kiswira villages). They aim to minimize post-harvest losses and reduce the cost of production. Scientific knowledge on the proposed interventions is integrated with the existing indigenous knowledge. In other side, the village is endowed with gold. Small mining activities in the villages create interaction; hence the community are vulnerable to HIV/AIDS. This would be a threat to disappearance of the knowledge.

### **Physical Assets**

Matombo is easily accessed by good roads. For example, Morogoro-Selous Game Reserve (for tourists) road passes through the division's villages and there is a famous modern agricultural market at Tawa ward (different people come in the area). These activities not only increase exchange (raising income due of exchange of goods/services with money) but also create a high morbidity and interaction of people; hence the community is susceptible to HIV infections if men and women happen to be involved in unsafe sex with guests and vulnerable to HIV/AIDS impacts.

## **Transforming structures and processes**

### ***(i)Institutions***

HIV/AIDS committees were formed in each village, but they never meet. Also, several seminars on HIV/AIDS awareness have been organized by Morogoro district council NGOs, and TACAIDS but no impacts have been registered. These seminars take place in town areas. The participants who are mostly local government officials get trapped to per diem. There are no feedback mechanisms. People, especially small-scale farmers, are no longer willing to listen to them. They don't see any changes.

### ***(ii)Culture***

The ethnic groups found in Matombo division are "Luguru" and "Kutu". The major tribe is "Luguru". It is kind of matrilineal. In Luguru tradition, originally land was passed from the mother to the son. In recent years, some conflicts arise and there is a greater tendency to change the power of land to patriarch hence leaving the females small scale farmers being the poorest among others. Sometimes, they do not access loan from SACCOS because they don't have land, which is used as mortgage. This forces them to involve in prostitution; hence susceptible to HIV/AIDS.

### ***(iii)Gender issues***

Traditionally in Matombo division men always become married to more than one wife. Also, involvement of females and males in households' works and income generation is unequal. Women spend more time in managing farms as cheap labourers, while men are responsible for selling of agricultural produce either within local area or transport them to Dar es Salaam city. This morbidity and interaction keep them at a high risk of HIV infections if they happen to practice unsafe sex.

### ***(iii)Laws and Policies***

The village government especially in Matombo division distributes land to poor small-scale farmers ranging from ½- 1 acre per household. However, in Kifindike village small-scale farmers are becoming overwhelmingly poor. Almost ¾ of the village land is under lease. Matombo Roman Catholic (RC) Mission acquired 99 years Right of Occupancy lease. The small-scale farmers spend almost their households' income in hiring land from the RC mission. In coupling this with HIV/AIDS impacts among affected households, the situation is made worse especially to small scale farmers among others in the community.

### ***(iv)Private sector***

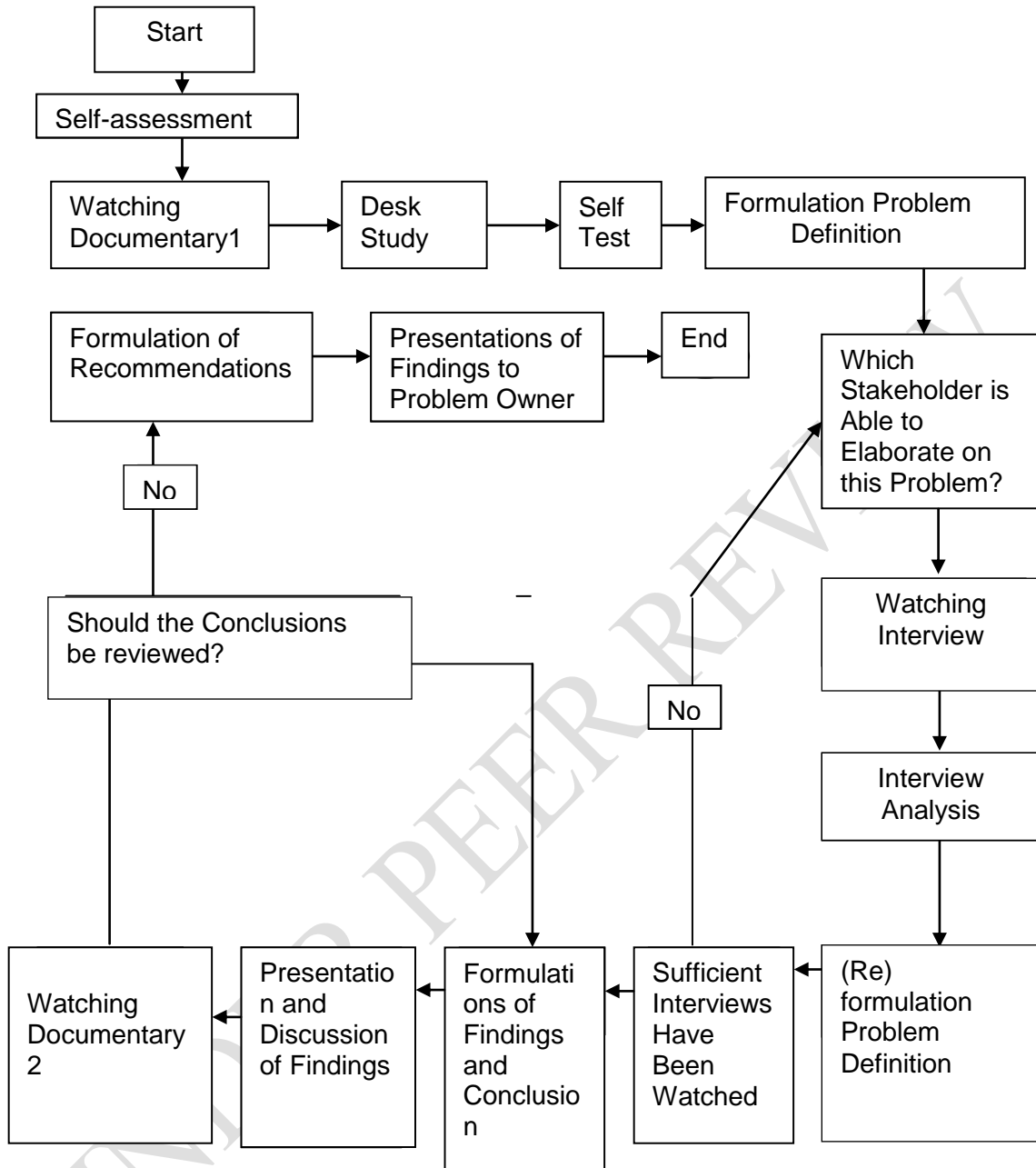
A private investor in Morogoro town has constructed a fruit processing industry. It started operations in 2005. The industry attracts youths from rural areas to seek for employment, hence increases interaction. This morbidity and interaction keep them at a high risk of HIV infections if they happen to practice unsafe sex.

### **Livelihood strategies**

*Livelihood Diversification:* Agriculture is the major economic activity in Matombo division. Only half of the total area of the division is put under gainful production. Small scale farmers own not more than 1- 2 acres of land. Very few small-scale farmers undertake a wide range of off farm activities such as running retail and semi-retail shops, petty businesses, "Mama nitilie" (food vendors) cafe, medium rest houses and handy craft (masonry) works to enable them to survive in fragile and ever challenging agro-social setting environment. These activities not only increase exchange (raising income due of exchange of goods/services with money) but also create a high morbidity and interaction of people; hence the area is susceptible to HIV infections and hence the community is vulnerable to impacts of HIV/AIDS

### **2.2 Data Collection Tools**

The data were collected using VPA A&RD (through interviewees films from Ghana, Zambia and Tanzania), workshops, key informant interviews, Focus Group Discussions (FGDs) and observations. The study followed under pseudo-experimental and case study strategies. This is because as per [20], pseudo-experiment guarantees internal and external validity of the results. It is carried out in many more situations than laboratory experiment and its variants are usually more life like. Data collection was performed to test some steps in the flow chart below (Fig. 1):



**Fig.1:** Flow chart of Visual Problem Appraisal Process (Adapted from Witteveen and Enserink, 2007)

### Tested Steps in the Flow Chart

**Steps:** Which stakeholder is able to elaborate in this problem? watching interview, interview analysis ;( re) formulation problem definition; sufficient interviews have been watched? Watching documentary 2

This meant to test small scale farmers' analytical capacity in making choices and their reactions towards the interviewees and their level of interaction in problem analysis as a way of social learning.

**Steps:** *Formulations of findings and conclusions; presentation and discussion of findings; should the conclusions be reviewed; Formulation of recommendations & presentations of findings to problem owner*

This meant to test the ability of small-scale farmers at grassroots level on problem framing. To what extent does VPA A&RD facilitate dialogue and ownership of the process and solutions among small scale farmers? To what extent do they rely on outsiders in problem formulations and agenda setting? Also to determine mandate issues regarding the follow up of outcome of the research. Finally, how does VPA A&RD bring about mediated public participation in decision making process.

### **2.3 Sampling and Primary Data Collection Process**

Data were collected through a holistic triangulation method i.e. group interviews, VPA A&RD workshops, physical visits and observations. The secretariat of Matombo Division Farmers Groups' Local Network (MVIWATAMA) was involved directly in a strategic selection of 20 (14 males and 6 females) workshop participants (both non-affected and HIV/AIDS positive individuals) from Kifindike, Tawa, Uponda, Kiswira and and Konde villages. The criteria for selection included: The local network is supported by Uluguru Mountains Agricultural Development Project (UMADEP) under Sokoine University of Agriculture (SUA) and Tanzania Farmers' Groups Network (MVIWATA) for more than seven years. Second; these were reasonable research units for internal validity of the information from VPA A & RD and external validity of the literature review on impacts of HIV/AIDS in the area. Also, among other activities, the local network carried out lobbying and advocacy works. The participants were divided into four (4) separate groups of females and males. First, this method helped to gather more information from people with similar experiences and background with regard to a situation and their feelings of VPA A&RD portraits in relations to their situations. Second, it helped in open expression of ideas; hence better decision making.

Three (3) workshops on VPA A & RD were organized. Workshop method allows not only gathering and describing information but also examining why they were taken and how they will be implemented. **Workshops are platforms for democratic community engagement and provide critical reflection on encapsulated problems and solution development [21, 22].** First, a workshop was conducted to train facilitators. It also meant to pretest the VPA A&RD analysis questions and adjustments were made whenever possible. Three (3) co- facilitators from Uluguru Mountains Agricultural Development Programme (UMADEP) under the Department of Agricultural Education and Extension of SUA and one (1) recorder

who was an undergraduate student in B.Sc. Agricultural General from the Department of Crop Science and Production of SUA were trained. The training on VPA A & RD was divided into the following categories: First; scoping (reflective journal form one) and problem analysis. Second category dealt with technicalities, coordination/organizational issues and facilitation (how to facilitate A&RD and facilitation skills). A separate questionnaire was used to gather their reactions after second and third workshops.

Second and third workshops were organized for further testing VPA A&RD at small scale farmers' grassroots level. They meant to compare responses (similarities and differences). The workshops were divided into the following phases: scoping phase (filling reflective journal form one and workbook/film orientation). Second phase: problem analysis (use of workbook with pictures and particulars of interviewees, watching film into groups and technicalities) and phase three: developing alternative strategies. The main objective of the VPA A&RD workshop was to support small scale farmers through MVIWATAMA farmers' groups local network to make their informed choices through HIV/AIDS grounded problem analysis which led to better decision-making process. The objective sought to build institutional problem ownership, hence generating research data which are useful for recommendations for government, rural development organisations and farmers' organisations to address HIV/AIDS problem in new innovative way.

During the workshops, a work book translated in Swahili was used. The workbook in form of worksheet, it contained interviewees' information (picture, name, title, place of residence and other particulars). The participants made choice of three interviewees at justified manner. Also, for every interview session they filled out the reflective journals (in form of questionnaire) and presented the findings in plenary sessions on flipcharts. The reflective journals had open questions in relation to their knowledge on HIV/AIDS, main issues in relation to HIV/AIDS and Rural Development in Africa and Asia and problem formulations. The competence of facilitators was identified during the facilitation processes. Furthermore, some observations were made regarding what inspires people: If they had to ask more questions? Whether they did ask for more interviewees? Whether they had interest to continue the process? Whether they had evaluated the process at the end? Etc.

The data were also collected through semi-structured checklist. Ten Uluguru Mountains Agricultural Development Project (UMADEP), governments and other rural development organizations key informants were interviewed to ascertain their competences in addressing HIV/AIDS problem and its impacts in rural development. Finally, physical visits were done to ascertain on small scale farmers' views on how condoms use catalyze new infections. This activity was achieved through visiting pharmaceuticals in Dar es Salaam city, Morogoro municipality, Ngerengere and Matombo divisions (buying condoms and observing expiry dates) and other organizations to cross-check on small scale farmers'

responses and the potentiality of A&RD VPA. Other field work activities were to cross-check information in different organizations and within different communities.

### **Secondary data collection**

Several up-to-date works of literature from peer reviewed and specialized scientific journals, scientific books, etc on media, HIV/AIDS policy and rural development studies and internet were reviewed. The information search focused merely on: the impacts of HIV/AIDS in social learning and agricultural productivity within a community, the coping strategies for HIV/AIDS affected small scale farmers' households and local community's mandate in problem formulations and ownership of solutions that help in minimizing HIV/AIDS impacts within the community.

### **2.4 Data Analysis and Framework of Analysis**

The potentiality of VPA A & RD in HIV/AIDS problem analysis and policy design is an object of analysis. The key points analyzed were responses (narratives) and observations during the workshops. The framework of analysis is based on the fact that involvement in VPA A & RD analysis supports grassroots level community capacity in making their informed choices for better problem formulations and eventually become effective tool for facilitating small scale farmers' dialogue and agenda setting.

Data obtained from VPA A & RD (interviewees films from India, Ghana, Zambia and Tanzania) and responses from key informants, group discussions and workshops were analyzed following content analysis procedure [23]. The procedure enabled the analysis of HIV/AIDS meaningful problem formulations and concrete measures and actions to address those problem(s) and impacts, and rural development organizations and small-scale farmers' feeling and perceptions of the ownership of the alternatives and validity of VPA A& RD tool.

The VPA A & RD interviewees, recorded responses from key informants, group discussions and workshops were transcribed into texts. The procedures enabled sorting and creating labels of sentences and paragraphs that communicated categorical meanings of such sentences and paragraphs. Then the data were categorized into different themes and numerous cross-references among emerging themes. In this way, as per Braun and Clarke [24], similar labels were grouped into themes and sub-themes. With the help of literature, themes and emerging themes were verified to identify final themes that represented meaning related to research questions in Section 2.2. Finally, the results were compared to relevant literature whereby interpretation and interrelation of the data (similarities, conflictive and inconsistencies) was done.

### 3. RESULTS AND DISCUSSION

#### 3.1 Validity of VPA A&RD Tool in Problem Formulations

##### 3.1.1 Coincidence of VPA A&RD Stories with a General Problem Understanding

**Table 1** Coincidence of VPA A&RD stories with a general problem understanding

S/NO	Major finding	Narratives	Observation
1.	Claim on expired condoms catalyzes new HIV infections in rural areas	" We always use expired condoms several times that's why do burst when we're having sexual intercourse with our beloved partners."	All condoms bought in rural areas were expired as compared to those in town and city.

Participants claimed that "expired condoms catalyze new HIV infections in rural areas". Following this claim as responses from small scale farmers, a deliberate effort was undertaken to ascertain the truth so that to make interpretation. On August, 2007 condoms were bought from four different areas. That's at Morogoro Municipality, Dar es Salaam city, Mtamba village (Kisemu ward Matombo, Morogoro District) and Ngerengere village in Morogoro District. With regards to condoms expiring dates, it was found that: Morogoro Municipality (September, 2011), Dar es Salaam city (February, 2012), Mtamba village (September, 2005) and Ngerengere (February, 2007). Again, it was observed that people in rural areas often neglect to check expiry dates, seemingly due to their haste. Upon reaching a pharmacy or shop, individuals would hastily request condoms to be wrapped in paper without bothering to check the expiry date. They would then promptly leave the premises without a concern for expiration dates. Contrary to this, customers in towns were observed to inquire about expiration dates. In rural areas, sellers took advantage of people's lack of awareness and sold expired condoms. A lack of knowledge on condom expiring dates accelerates their burst during sexual intercourse; hence catalyzing new infections.

This argument is supported by group members during group discussion; they claimed that expired condoms were several times in use. They further said that condoms did burst when having sexual intercourse with their beloved partners. Basing on the finding, expired condoms contribute to new infections. This shows that the impact of HIV/AIDS will continue to be very devastating in rural areas if no action is taken especially on awareness on lethal effect of expired condoms and education on their use.

## **3.2 The Role of VPA A&RD in Fostering Grassroots' Future Actions**

### **3.2.1 Confidence of grassroots to take action**

It was observed during workshops and Focus Group Discussions (FGDs) that farmers still have a traditional system of trusting and depending on professional responsibility. This is evidenced when more than 50% small scale farmers during discussion on initiatives to realize the solutions. They agreed that since the researcher brought them with innovative approach, hence, he should help them on how to convince MVIWATA and relevant government bodies and other national and international bodies so that their suggestions should be put into practice.

The facilitators tried their level best to foster a sense of ownership and insisted on their personal responsibility but they kept insisting on the same. This shows that they lack confidence to take actions. This is quite different as observed in international class setting. During Visual Problem Appraisal class, students formulate problems and solutions and bring a sense of ownership [8]. This implies that a form of institutionalization is important to exert political influence to minimize this traditional dependence on professionals so as to re-create a sense of community empowerment.

### **3.4 VPA A&RD as means of developing grassroots' communication strategies**

In their views small scale farmers believe that VPA A & RD help to foster participation and are a means to re-create communication and empowerment among stakeholders. As revealed by [25, 26, 27] participation is not just about getting people to do projects, it is about empowering them so that they can sustain their development process into the future. In this way, MVIWATAMA members through VPA A & RD workshops developed their own communication strategies to formulate problem and integrate them into their actions for the betterment of their fellows at national and international levels. This is because, [28] peasants cannot and must not be confined themselves to their local development needs and problems. They are concerned with, and actually involved in, national and international issues and problems.

The VPA A & RD workshop participants agreed that VPA A&RD convey information in accessible way, even to illiterate people; they can access and understand the information. The finding is supported by [29, 30] who pointed out that video is a tool to both reflect the participant's reality and highlight their potential to change this reality. In this research, participants framed problems and solutions basing on the information provided by distant interviewee(s)

## **3.5 The Role of VPA A&RD in Influencing Informed Choices**

### **3.5.1 VPA A&RD and language issues in problem framing**

It was noticed that participants showed fear in choosing English speaking interviewees in spite of the presence of translators. Participants wondered how comes a Tanzanian Doctor uses English language in his interview. They expected him as a Tanzanian to tell his story in Swahili language. Despite this shortcoming, in their discussions, they agreed that the VPA A&RD tool was very promising whenever they watched interviewees' portraying their own situation in the language they are used to, which is Swahili language. They felt better and became motivated and interested to continue with the process. It made them to keep on asking questions like: What is the next step? Where is the next interviewee(s) to fulfill our ambitions? etc. The results imply that, VPA A&RD interviewees' portraying issues in participants' own language encourage participation and interaction as compared to foreign ones. This is an important aspect as far as agenda setting and community engagement for rural transformation is concerned.

### **3.7 VPA A&RD as dialectic tool in public participation and problem framing**

According to [27] collaborative approach has the following stages: understanding of the problem, developing a long-term vision for the future, generating alternative solutions, evaluating and debating the alternatives, selecting and agreeing on a preferred alternative and finally agreeing on mitigation measure. It can be deduced from the above explanations that, the use of VPA A&RD can be seen as collaborative approach in public participation as it encourages interaction, generating agreed solution and mitigation measures for future action.

### **3.8 Institutional Related Factors in Facilitating Decision Making and Agenda Setting**

#### **3.8.1 Facilitating the decision-making process for meaningful problem analysis**

While making some observations, the co-facilitators were seen clarifying key points and important steps. They let participants to determine their destiny and did not interfere during discussion. Also, they let participants to involve in a live discussion. They also gave participants several chances to re-watch VPA A&RD video during the workshop. This skill is needed in VPA A&RD facilitation and fostering social and experiential learning. As it is reported by [18] that experiential learning can be enhanced by actively supporting the basic steps and translations that take place during learning, and by offering new learning opportunities. The results imply, that professionals can facilitate VPA A&RD processes when their capacity is enhanced

It is also important to intervene the process of decision making for the grassroots to make collective decision making and informed choices. An interview was made with one of co-facilitator who said that:

*"I strongly agree with one of the group members during discussion who said it is possible the current HIV/AIDS crisis will escalate to calamity on scale not before*

*as seen and heard from the interviewees on VPA A&RD films” (a workshop facilitator-SUA field practical student at Tawa village).*

*He further said that:*

*“Members could not offer concrete solutions and his group members reacted to him and demanded more clarification. They did it in person. In order to avoid discouragement from participation of the group members, I firmly insisted they attach the ideas for better solutions not a person during discussion” (a workshop facilitator-SUA field practical student at Tawa village).*

This might indicate that in order VPA A&RD facilitation to contribute to better decision as a way of public participation in their endogenous development, facilitators and professionals should let the process to be free and should intervene whenever possible.

### **3.9 Mandate in problem formulations and ownership of solution**

The issues of mandate were figured out as indicated in Table 1. This meant to have a follow up of energy and full consent of the participants. MVIWATAMA farmers' groups' local network and Kisemu and Tawa wards executive officers were asked about mandate of study in fostering problem formulation and ownership of solutions; they all agreed that small scale farmers have mandate as per Tanzania's constitution, and they seem they could support the follow up from problem owners. In addition; it is mandatory for designing their own communication strategies for future action and when small-scale farmers asked to what extent have mandate in problem formulations and ownership of solutions they narrated as follows:

*“The government and some HIV/AIDS related development organizations formulate problems and ask us to implement, and we don't have to formulate problems since we don't have a support to make things happen”.*

They further added that:

*“Always outsiders come here to extract information from us, and they end up formulating projects for their own interest, and that is all. They only frame their problems and bring their interventions so that we act upon their need. Thanks to this approach (VPA A&RD) it is empowering and it's our national constitutional right to formulate problems and take actions ourselves”.*

A sense of empowerment is as accordance to [31] assertion that through documentation the “realities”, situations can be confronted, and subsequently remedied. The above responses show that grassroots especially small-scale farmers are unwilling to participate in traditional method of information extraction. They feel mandate and ownership of the solutions if interactively and actively involved in generating their own solutions. This is possible if they feel trusted to

take concrete action themselves. The results show that VPA A&RD are empowering as small-scale farmers have mandate and ownership of solutions.

### **3.11 VPA A&RD encourages more interaction among participants**

The use of A&RD at grassroots level encourages interaction among participants. During group discussion, it was observed that group members kept awaking passive participants. It was observed and heard from one group member who awakened her fellow by saying that: *“Please say something. Why are you so quite?”* Finally, a shy man cooperated and interacted positively with constructive contributions in group works. This is indicated by [32, 33] who reported media as a social activity can bring benefits associated with better information, insights, and understanding and, encourages interaction among stakeholders.

## **4. CONCLUSION AND RECOMMENDATIONS**

Generally, with regard to the use of Visual Problem Appraisal AIDS and Rural Development (VPA A&RD) in HIV/AIDS problem analysis in Tanzania, the findings indicated that the tool enhanced community engagement by stimulating interaction and communication among small scale farmers. The tool reflected on their realities, background and feelings. It mediated small-scale farmers' participation in decision making process as they interactively and actively involved in generating their own solutions. In addition, the tool reinforced agenda setting as it led to the development of new insights as they were able to identify key problems that prompted future actions. For instance, the expired condoms and policy inactions. Furthermore, the study found that professionals can facilitate VPA A&RD when their capacity is enhanced. Therefore, the study recommends the following:

- (i) An establishment of HIV/AIDS policy working paper among Tanzanian universities which will contribute in policy analysis, fostering and promoting wider understanding of the relevant HIV/AIDS policy gaps, inactions and creating a debate in confronting lethal effects.
- (ii) Universities in Tanzania should incorporate the VPA methodology in their curricula to enhance critical thinking and grounded analysis to future HIV/AIDS policy analysts and advisors.
- (iii) The rural development organizations' frontline field workers should be trained on filming and production of site specific VPA A&RD and facilitation skills. This will support proper grounded analysis of problems and solution for proper mitigation of AIDS pandemic.

## **REFERENCES**

1. Tanzania Bureau of Statistics (NBS). Tanzania HIV Impact Survey (THIS) 2022-2023 Fact Summary Sheet, Tanzania; 2023 ([THIS2022-2023\\_Summary\\_Sheet.pdf \(nbs.go.tz\)](https://nbs.go.tz/THIS2022-2023_Summary_Sheet.pdf))

2. United Republic of Tanzania. Tanzania HIV/AIDS and Malaria Indicator Survey 2007-2008. Tanzania; 2008.
3. Greener R. The Impact of HIV/AIDS on poverty and Inequality: The Micro-economics of HIV/AIDS. International Monetary Fund, Washington DC; 2004.
4. United Republic of Tanzania (URT). Agriculture Sector Strategy for HIV/AIDS and Other Related Chronic Diseases. Ministry of Agriculture and Food Security. Ministry of Health, Tanzania; 2006.
5. Mpondo BCT, Gunda DW. and Kilonzo SB. HIV Epidemic in Tanzania: The Possible Role of the Key Populations. *AIDS Research Treatment*. 2017; 2017:7089150. DOI: 10.1155/2017/7089150. Epub 2017 Aug 17. PMID: 28948049; PMCID: PMC5602645.
6. Wang Y, Kinsler JJ, Kiwuwa-Muyingo S. Factors associated with HIV testing among youth in Tanzania based on the 2016–2017 Tanzania HIV Impact Survey (THIS). *PLOS Global Public Health*. 2022; 2(11): e0000536. <https://doi.org/10.1371/journal.pgph.0000536>
7. FAO and UNAIDS. Sustainable Agricultural/Rural Development and Vulnerability to the AIDS Epidemic; 1999: 14-16.
8. Witteveen L, Put M. and Leeuwis C. Learning about Complex Multi-Stakeholder Issues: Assessing Visual Problem Appraisal. *Journal of Agricultural Education and Extension*.2010; 16 (2):39-54.
9. Samuel, J. Public Advocacy and People’s Centred Advocacy: Mobilizing for Social Change. *Development in Practice*. 2007; 17(4&5): 618-620.
10. Witteveen L, Enserink B. Visual Problem Appraisal-Kerala’s Coast: A Simulation for Social Learning about Integrated Coastal Zone Management. *Simulation & Gaming*. 2007; 38, 2(6): 278-287.
11. Witteveen L. and Lie R. Embedded filming for social change: Learning about HIV/AIDS and rural development professionalism. *International Journal of Educational Development*. 2009; 29 (2009): 80–90.
12. Ballentyne R. and Packer J. Introducing a fifth pedagogy: Experience-based strategies for facilitating learning in natural environments. *Environmental Education Research*.2009; 15 (2): 243-262.
13. Isingo R, Wringe A, Todd J, Urassa M, Mbata D, Maiseli G, Manyalla R, Chagalucha J, Mngara J, Mwinuka E, Zaba B. Trends in the uptake of voluntary counselling and testing for HIV in rural Tanzania in the context of the scale up of antiretroviral therapy. *Tropical Medicine International Health*. 2012 Aug;17(8): e15-25. DOI: 10.1111/j.1365-3156.2011.02877. x. PMID: 22943375; PMCID: PMC34433 72.
14. Mpondo BCT, Gunda DW. and Kilonzo SB. HIV Epidemic in Tanzania: The Possible Role of the Key Populations. *AIDS Research Treatment*. 2017; 2017:7089150. DOI: 10.1155/2017/7089150. Epub 2017 Aug 17. PMID: 28948049; PMCID: PMC5602645.
15. Jeckoniah J N. Social and cultural determinants of the spread of HIV/AIDS, STIs and gender-based violence in high-risk areas: A case of road construction sites in Tanzania. *International Journal of Development and Sustainability*.2018; 7 (7): 2187-2203.

16. Karris MY, Dubé K, Moore AA. What lessons it might teach us? Community engagement in HIV research. *Current Opinion on HIV AIDS*. 2020 Mar;15(2):142-149. doi: 10.1097/COH.0000000000000605. PMID: 31895141; PMCID: PMC7374765.
17. Hausken K. and Ncube M. Policy makers, the international community and the population in the prevention and treatment of diseases: case study on HIV/AIDS *Health Economics Review*.2017; 7(1) DOI:10.1186/s13561-016-0139-x
18. Family Care International. Millennium development Goals Sexual and Reproductive Health; 2005.
19. Ellis F. *Rural Livelihoods and Diversity in Developing Countries*. Oxford University Press, New York; 2000.
20. Verschuren P, Doorewaard H. *Designing a Research Project*. LEMMA Publishers, The Netherlands; 2005.
21. Gustavsen B. Theory and Practice; The mediating discourse. In P.Reason and H.Bradbury (Eds.). *Handbook of Action Research*. Sage, London; 2001.
22. Bhana A. 2002. Participatory action research: A practical guide for realistic radicals. In: M.Terre B. and K Durrheim (Eds.). *Research in practice: Applied methods for the social sciences*. Cape Town, University of Cape Town Press.2002: 221-238.
23. Krippendorff K. *Content Analysis: An Introduction to its Methodology*, 3rd edition. SAGE Publication Inc., New York; 2013.
24. Braun V. and Clarke V. Using thematic analysis in psychology. *Qualitative Research in Psychology*.2006; 3 (2):77-101.
25. International Association for Public Participation.; 2010. Available: <http://www.iap2.org>.
26. Hiyama C, Keen M. (2004) Analysis of Learning cycles in Participatory Environment and Development Projects: Lessons from Nepal. *Environmental Management and Development Occasional Papers Occasional Paper*. 2004; 6.
27. Southern African Institute for Impact Assessment (SAIIA). *Training Course- Public Participation in Environment Assessment in Southern Africa*. Developed as part of SAIEA Calabash Project. South Africa; 2005.
28. Mattee A, Lassale T, Noy F. *Rural Tanzania: Struggling Between Tradition and Modernity*. Sokoine University of Agriculture, Morogoro, Tanzania; 2003.
29. Nick N, Lurch C. *Insights into Participatory Video: A Handbook for the Field*. Insight, UK; 2006.
30. Taylor J, Makarais D, Kaplan A. *Action Learning for Development Use Your Experience to Improve Your Effectiveness*. Juta and Company Limited, South Africa; 1999.
31. White SA. Participatory video: A Process that Transforms the Self and the other. In: White, S.A (ed.) *Participatory Video: Images That Transform*. Sage Publications Ltd, London; 2003.
32. Leeuwis C. *Communication for Rural Innovation Rethinking Agricultural Extension (3rd edition)*. Blackwell Science, UK; 2004.

33. Branston G, Stafford R. The Media Student's Book (4<sup>th</sup> Edition). Routledge, USA;2006.

UNDER PEER REVIEW

UNDER PEER REVIEW