

Wood Degrading Enzymes and their Decay Strength: a review

ABSTRACT

The degradation of wood is a major point of concern in the economy. The microbes that degrade the wood release various enzymes that decay the wood. In the present review article, we have collected the data for various decay strengths of different decay enzymes released by the various microbes from several peer-reviewed articles. The fungus basidiomycetes and some wood-degrading bacteria are responsible for the degradation of wood. The degraded wood is a major loss to the economy timber decay and many more. The degradation of wood or wood decay is also a major loss to the ecosystem by losing some precious plant species. Various data mining techniques have been used in this review to collect the data from the publications. The data in this article covers the various fields, the Name of the plant being degraded, the name of the wood degrading microbe, the Enzyme released by the microbe, the Decay strength of that enzyme, and the total loss to the economy by that decay. The unwanted decay of plant wood can be minimized if the causative agent and the enzyme released by it are found.

Keywords: Wood-degrading microbes, Wood-degrading enzymes, Decay strength, Wood-degrading fungi, Wood-degrading bacteria, carbohydrate-degrading enzymes.

1. INTRODUCTION

Crop losses due to microbial attacks even after excessive use of chemical antifungals and antibacterials, are major concerns for humanity and environmental protection. By the virtue of unique properties possessed by micro and nano-structures, their implementation in Agri- biotechnology is largely anticipated. Hence, traditional Wood degrading microbial management strategies are now forestalling the potential of micro and nanotechnology as an effective and viable approach to alleviate problems about wood-degrading microbial control. These technological innovations hold promise to contribute to enhanced productivity by providing novel agrochemical agents. The present work contributes to the data collection of wood degrading enzymes and their decay strength. The intensity with which the enzymes degrade the wood is the decay strength. Fungal pathogens are proven to be a common and popular contaminant of agroecosystems that approximately causes 70–80% of total microbial plant loss reported worldwide [1]. It is estimated that nearly one-third of global plant production is destroyed annually due to the degradation of wood, pests, microorganisms, natural disasters, soil infertility, etc.[2] Reported that to degrade the polysaccharides, wood-decay fungi secrete a variety of glycoside hydrolases (GHs) and carbohydrate esterases (CEs) classified into various sequence-based families of carbohydrate-active enzymes (CAZs) and their appended carbohydrate-binding modules (CBM). The enzymes released by the fungi are carbohydrate-degrading enzymes called CAZymes. Oxidative enzymes, such as cellobiose dehydrogenase (CDH) and lytic polysaccharide monoxygenase (LPMO, formerly GH61), also have been implicated in cellulose degradation. [3] reported prokaryotes are also involved in wood degradation. Recent developments in powerful meta-omic techniques are making it possible to mine the incredible genetic diversity of prokaryotic communities of lignocellulose-enriched environments, such as compost, for new robust lignocellulose degrading enzymes that could potentially perform well under industrial conditions. Lytic polysaccharide monoxygenases (LPMOs) are copper enzymes that catalyze oxidative cleavage of glycosidic bonds. These enzymes are secreted by many microorganisms to initiate infection

and wood degradation processes [4]. In marine waters wood degrading organisms can be divided into two groups. The first group consists of macro-organisms (mainly bivalves and crustaceans) that physically gnaw and feed on wood material. The second group is micro-organisms, fungi, and bacteria, which by enzymatic processes dissolve and utilize the carbohydrates within the wood cell wall [5].

2. PURPOSE OF THE REVIEW

It is estimated that nearly one-third of global plant production is destroyed annually due to the degradation of wood, pests, microorganisms, natural disasters, soil infertility, etc. To overcome these problems, various modern technological strategies are implemented. Among these technologies is the use of nanotechnology, biotechnology, and bioinformatics in the management of wood-degrading microbes to answer global resin output. The wood submerged in saline and oxygenated marine waters are degraded by molluscs and crustaceans. And the cold coastal waters of the Antarctic the degraders are absent and no other wood-degrading organisms are there [6]. Hardwood species have much lower recalcitrance to enzymes than softwood [1].

3. ORGANISMS THAT CAUSE WOOD DEGRADATION

There is no report of viruses and algae degrading the wood. The viruses inhibit fungus to degrade the wood, As presented in the publication[7]. The uptake of water is an integral factor associated with wood's ability to be attacked by fungi and to decay, but moisture also impacts wood by moving into the cellular structure to associate with the cellulose, causing dimensional changes [22]. [18] Created a database named as eLignin that map the diversity of microbial lignin catabolism. Waterlogged archeological wood degradation is a prolonged process that completes over a very long period [11]. Fungi are considered to cause grapevine trunk diseases such as esca that result in wood degradation. Bacteria that colonize plants enhance the fungal degradation of wood [12]. Fungi are generally known to degrade lignocellulose. several fungal species like *Trichoderma reesei*, *Phanerochaetechrysosporium*, *Fomitopsis palustris*, *Orpinomycesspetc*, were found to degrade cellulose by inhabiting the gastrointestinal tracts of several ruminating animals [13]. [14]The authors in cited paper isolated an insect-associated fungus, *Daldiniadeciensiota*, as a potential symbiotic fungus of female *Xiphydriaalbopicta* captured from Hokkaido forest. There are Structural variations in the pine and birch LCC(Lignin carbohydrate complex) preparations of different types (Milled Wood Lignin, Cellulolytic Enzyme Lignin and LCC extracted from MWLc with acetic acid (LCC-AcOH))[15]. The decomposition of wood is influenced by invertebrates.[11].

4.SCOPE

Several natural compounds of plant and animal origin have fungicidal properties, including essential oils, tannins, wood extractives, alkaloids, propolis, or chitosan [16]. Since the growth of wood-degrading fungi depends on water availability, one of the methods is moisture control using natural hydrophobicity agents, such as resins and waxes of plant or animal origin, or plant oils. The antifungal properties of various plant extracts make them interesting also as a potential source of natural substances that may be used as alternative wood preservatives against decay. Scot's pine heartwood is known to have resistance to wood decay due to the presence of extractives, namely stilbenes and resin acids. Even Scots pine heartwood can be degraded by the fungus *Rhodoniasplacenta*, which can degrade the extractives namely stilbenes due to which the pine woods can also be degraded [17]. The biological control of fungal diseases through biocontrol agents such as antagonistic fungi (AF) and other microorganisms can be done. AF includes various genera of fungi that cure fungal diseases in plants effectively. Furthermore, they play a regulatory role in various plant physiological pathways and interactions. AF is highly host-specific having negligible effects on non-target organisms and has fast mass production capability [18]. Some antagonistic bacilli inhibited the growth and development of wood-decay fungi in vitro and led to the formation of spheroplasts on growing hyphae[19].

5.MICROBIAL METABOLITES THAT DEGRADE WOOD AND KILL WOOD DEGRADING FUNGUS

Trichoderma is identified as the genus with the greatest potential comprising 25 biocontrol agents that have been used against several plant fungal diseases [20]. Scientists have found that several bacterial genera including *Bacillus* and *Pseudomonas* have antimicrobial activity against numerous pathogenic bacterial and fungal plant pathogens [21]. It is well established that the white-rot basidiomycetes can be distinguished by their decay patterns. One group includes the model ligninolytic fungus *Phanerochaete chrysosporium*, which degrades cellulose, hemicellulose, and lignin simultaneously. Another group, exemplified by *Ceriporiopsis subvermispora*, can selectively remove lignin in advance of cellulose degradation [22]. Rigid tubular structures are required in higher plants to transport water and nutrients yet, at the same time cellulose microfibrils together with lignin and hemicellulose form a natural biocomposite that allows trees to support their enormous weight. This natural biocomposite allows trees to withstand hostile weather—very strong winds and consequently live for many thousands of years [23]. Fungi produce a broad range of extracellular enzymes to facilitate the depolymerization of plant biomass, most of which are classified in the Carbohydrate-Active enZymes (CAZy) database (www.cazy.org) [24].

6. CHEMISTRY OF WOOD DEGRADING ENZYMES AND ANTAGONISTIC ENZYMES

Angiosperms have more complex lignin including a higher relative abundance of syringyl units with the C3 and C5 positions of the aromatic ring blocked by methoxyls, compared with most gymnosperms that results in a predominance of non phenolic (C4- etherified) units [25]. Numerous strains from the *Trichoderma* species have high cellulose and xylan degradation potential and could be useful for lignocellulose biomass conversion [26]. Most brown rot fungi are generalists or gymnosperm specialists, whereas most white rot fungi are angiosperm specialists [7]. Lytic polysaccharide monoxygenases (LPMOs), a class of copper-dependent enzymes might be associated with a lignin degradation pathway. The enzymatic biodegradation of structural polysaccharides is affected by the degree of delignification of lignocellulose during the white-rot fungal decay process [27]. Plant biomass utilization by fungi requires the secretion of extracellular enzymes to degrade the polymeric components, transporters for the sugars released from the plant biomass, and intracellular catabolic enzymes [28]. Nanotechnology can offer green and eco-friendly alternatives for plant disease management, a diverse range of fungi have been screened for their ability to create silver nanoparticles [29]. The various tunneling bacteria cause the degradation of wood in various plants [30]. Enzymes of the GH27 family also show α -N-acetylgalactosaminidase activity in *Aspergillus niger*, suggesting that members of this family could be involved in processes other than hemicellulose degradation [31].

2. METHODOLOGY

The study was selected based on commercial loss in wood and timber due to wood degradation. The various wood-degrading enzymes were the focus. The data was collected from the last 10 years of peer-reviewed journals. The publications were downloaded from PubMed and Google Scholar. The various fields were created including the name of the organism, the name of the enzyme, decay strength, etc. The data has been collected in the database format creating various tables from the various publications in peer reviewed journals [32–36]. The keywords used during the PubMed search are “Wood degrading enzymes” from which 150 papers were downloaded, Out of which 68 papers were cited in the present manuscript. The phylogenetic relationship for the various wood degrading fungus species is done to get the genetic relationship between the various fungus species.

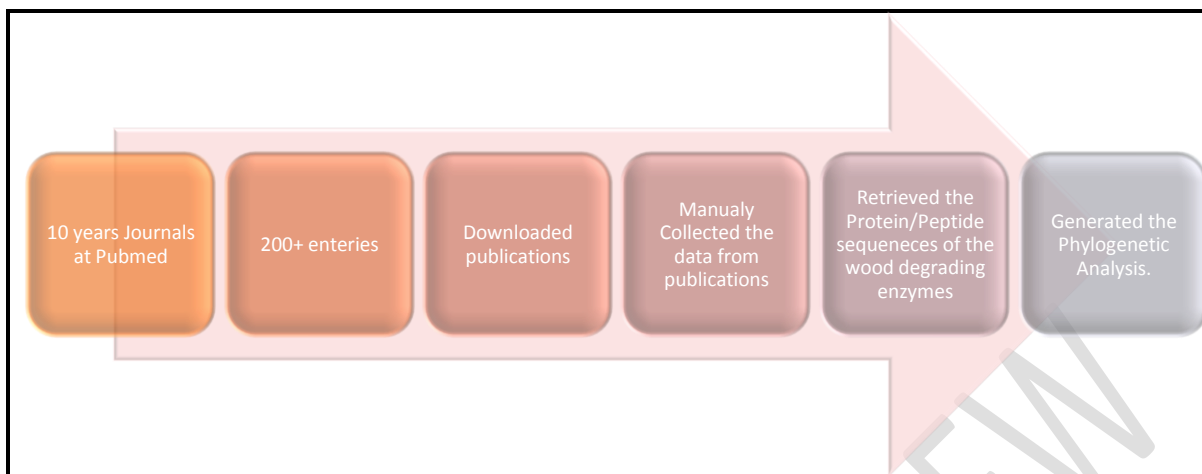


Figure1: Overview of the Methodology followed to generate review

3. RESULTS AND DISCUSSION

The various wood degrading enzymes and their decay strength has been collected from various peer reviewed journals. The collection has been tabulated in tabular format. The various plants or plant parts which has been used as substrate for the study are included in the table. The plants with various decay strength are tabulated. The organism responsible for wood degradation is also listed in the table. The protein sequences for the wood degrading enzymes are collected from NCBI and various peer reviewed journals. For those collected sequences the phylogentic analysis is done. The phylogenetic relationship exhibits the various wood degrading microbes having same ancestor and also the closely related microbes. The figure 2shows some of the closely related microbes that degrade the wood. The enzymes released by these microbes have similar functional activity. These enzymes react with similar compoundshaving same functional activity.

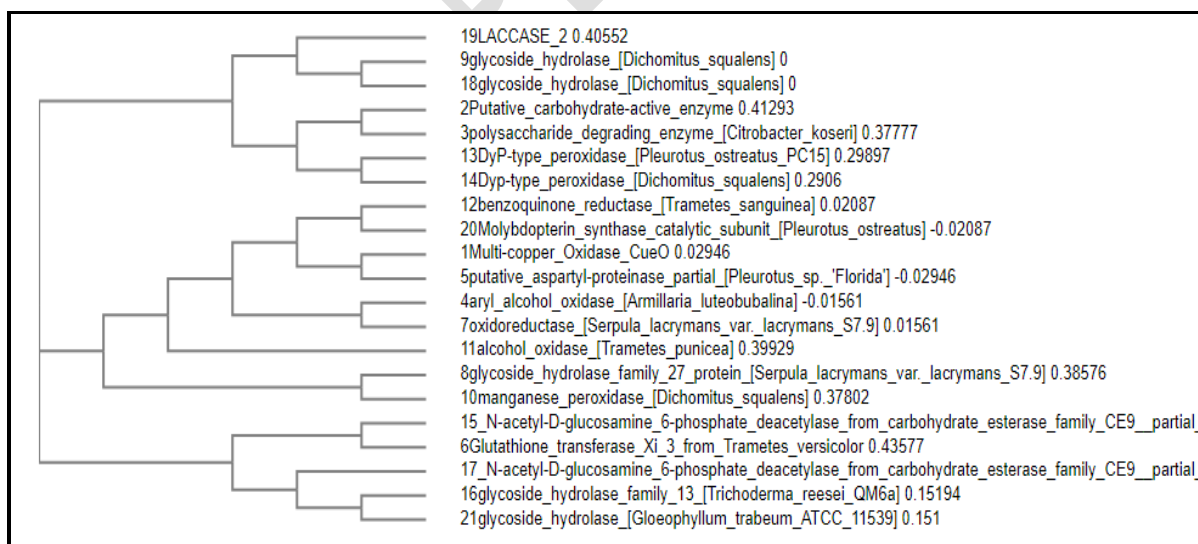


Figure2: The phylogenetic Analysis for wood degrading enzymes

Table 1. List of Wood degrading enzymes with their decay strength and site of release

Sr. No	Substrate being degraded	Name of the organism causing wood degradation	Name of the Enzyme/Protein	Site of release	Decay Strength	Reference
1.	softwood species balsam fir (<i>Abies balsamea</i>), lodgepole pine (<i>Pinus contorta</i>), or white spruce (<i>Picea glauca</i>) or the hardwood species sugar maple (<i>Acer saccharum</i>)	White rot fungus <i>Phanerochaetecarnosa</i>	lignin-degrading peroxidases (manganese peroxidase (MnP))	Extracellular	High	[37]
2.	softwood species balsam fir (<i>Abies balsamea</i>), lodgepole pine (<i>Pinus contorta</i>), or white spruce (<i>Picea glauca</i>) or the hardwood species sugar maple (<i>Acer saccharum</i>)	White rot fungus <i>Phanerochaetecarnosa</i>	carbohydrate-active enzymes	Extracellular	Low	[38]
3.	<i>Arabidopsis thaliana</i>	Basidiomycetes	Polysaccharide degrading enzymes (Cytochrome P450 Monooxygenase)	Cytochrome complex	High	[39]
4.	Aspen Wood	<i>Ceriporiopsis subvermi</i>	Manganese peroxidases and an aryl alcohol	Cytochrome	High	[40]

		<i>spora</i> (fungus), <i>Phanerochaetechryso</i> <i>sporum</i>	oxidase ,glycoside hydrolase (GH) family 51 arabinofuranosidase, GH10 endoxylanase, GH5_5 endoglucanase, and GH7 cellobiohydrolase, Cellobiosedehydrogenas e	complex		
5.	<i>Populus</i> <i>trichocarpa</i> (Viridiplantae)	<i>Aplysia californica</i> (Mollusca) and <i>Bankia</i> <i>setacea</i>	carbohydrate-active enzymes (CAZymes)	Gills	High	[41]
6.	Timber and wood	<i>Pleurotus sp.</i>	Proteases	Extracellular	High	[41]
7.	Sapwood, Heartwood, knotwood	<i>Trametes versicolor</i> , <i>Phanerochaetechryso</i> <i>sporum</i> (White rot fungus)	Glutathione transferases	Extracellular	High	[42]
8.	Hardwood and Softwood	<i>Myceliophthorathermo</i> <i>phila</i> (white rot fungus)	lignocellulolytic	Extracellular	High	[43]
9.	Downed wood	<i>Postia placenta</i> , <i>Serpulalacrymans</i> , <i>Gloeophyllumtrabeum</i> (Brown rot fungi)	Oxidoreductase	Extracellular	Low	[44]
10.	Downed wood	<i>Postia placenta</i> , <i>Serpulalacrymans</i> , <i>Gloeophyllumtrabeum</i> (Brown rot fungi)	glycoside hydrolase	Extracellular	High	[45]
11.	<i>Torreya</i> <i>Nucifera</i>	Proteobacteria, Xanthomonas,	GH16 and GH53 proteins (hemicellulolytic enzymes)	Soil	High	[46]

		Pseudomonas, and Stenotrophomonas				
12.	Softwood, Hardwood, Barley straw, Oat straw, Wheat straw, Switchgrass, Muscathus, Corn Stalks, Cereals.	(Actinomycetes) <i>Streptomyces viridosporus</i> , <i>S. paucinobilis</i> and <i>Rhodococcus jostii</i> , (α-Proteobacteria) <i>Brucella</i> , <i>Ochrobactrum</i> , <i>Sphingobium</i> and <i>Sphingomonas</i> genera and (γ-Proteobacteria) <i>Pseudomonas fluorescens</i> , <i>Ps. Putida</i> , <i>Enterobacter lignolyticus</i> and <i>Escherichia coli</i>	Galactoglucomannan, Arabinoglucoronoxylan, Glucunoroxylan, Glucomamnan (Hemicelluloses)	Soil	High	[47]
13.	Spruce wood	<i>Fomitopsis pinicola</i> (Brown rot species)	Carbohydrate active enzymes (CAZymes), auxiliary oxidoreductases and protein active enzymes	Extracellular	High	[48]
14.	Plant Biomass	<i>Dichomitussqualens</i>	Carbohydrate active enzymes (CAZymes)	Extracellular	High	[49]
15.	Heartwood	<i>Trametes versicolor</i>	Glutathione transferases	Extracellular	High	[50]
16.	Hardwood and softwood	<i>Fomitopsis pinicola</i>	Peroxidases, laccases, ligninolytic oxidases, Carbohydrate-active enzymes, glycoside hydrolases (GHs), carbohydrate esterases (CEs), and lytic polysaccharide monoxygenases	Extracellular	High	[51]

			(LPMOs), cellulose-binding modules			
17.	<i>Pinus contorta</i> , <i>Pinus taeda</i>	White rot fungi	Manganese peroxidase, Alcohol oxidase, Benzoquinone reductase, Dyp-type peroxidase	Extracellular	High	[52]
18.	Wood	Brown rot fungus <i>Postia placenta</i> , non-brown-rot fungus, <i>Trichoderma reesei</i>	Carbohydrate active enzymes	Extracellular	High	[53]
19.	Woody Biomass	Basidiomycetes, <i>Postia placenta</i>	Hydrolytic and active Carbohydrate enzymes	Extracellular	High	[54]
20.	Decorticated and Sapwood	<i>Auriculariopsis amplata</i>	CAZymes (Carbohydrate active enzymes)	Extracellular	High	[55]
21.	Spruce wood	White rot fungus <i>Trichaptum abietinum</i> , <i>Phlebia radiata</i> , Brown rot fungus <i>Fomitopsis pinicola</i>	Hydrolytic enzymes	Extracellular	High	[56]
22.	Plant Biomass	<i>Dichomitussqualens</i>	Carbohydrate active enzymes intracellular CAZymes, enzymes catabolic	Extracellular and intracellular	High	[57]
23.	Woody material plant	<i>Cerrena unicolor</i>	Cellobiose dehydrogenase	Cellulose-based medium	High	[58]
24.	Media Agar	Basidiomycota (Class I) and Ascomycota (Class II and Class III)	Cellobiose dehydrogenase	Extracellular	High	[59]
25.	Plant Biomass	<i>Cortaritermes fulviceps</i> and <i>Nasutitermes aquilinus</i>	Lignocellulose-degrading enzymes	Termite gut	High	[60]

		s				
26.	Wood or timber <i>Malus domestica</i> , <i>Fraxinus excelsior</i> , <i>Juglans regia</i>	<i>Schizophyllum commune</i>	Lytic enzymes	Extracellular	High	[61]
27.	Dead organic matter	<i>P. cinnabarinus</i> , <i>P. coccineus</i> and <i>P. sanguineus</i>	CAZymes	Extracellular	High	[62]
28.	<i>Populus alba</i>	<i>Pleurotus ostreatus</i>	Glycoside hydrolases, Redox enzymes, Intracellular Cont., Proteases, Esterases, Lyases	Extracellular	High	[63]
29.	Japanese cedar <i>Cryptomeria japonica</i>	<i>Gloeophyllum trabeum</i>	Carbohydrate Active enzyme (CAZyme) glycoside hyrolase family 12 (GH12), GH131, carbohydrate esterase family 1 (CE1), auxiliary activities family 3 subfamily 1 (AA3_1), AA3_2, AA3_4 and AA9	Extracellular	High	[64]

4. WOOD DEGRADING MICROBES AND PATHOGENICITY

The bacterial community in wood degrading plants is very dynamic. Bacteria community in the fruiting body attached to the living standing tree gets suppressed compared with those associated with dead wood. The very interesting thing that can be seen in plants under wood degradation is that the wood degrading microbes are present in the wood as well as in the fruiting body upto the time the plant is standing alive. After the death of the plant the wood degrading microbes moves to the degrading dead wood and leave the fruiting body [66]. On the other hand the Oxalate secretion by fungi provides advantages for their growth and colonization of substrates. The role of oxalic acid in pathogenesis is through acidification of host tissues and sequestration of calcium from host cell walls. The cell wall gets weakened because of the formation of calcium oxalate crystals. Thereby allowing polygalacturonase to effect degradation more rapidly in asynergistic response[67]

5. IMPACT ON SOIL NITROGEN CONTENT

The high carbohydrate availability in white rotted wood promotes the activity of Nitrogen fixing bacteria to fix the atmospheric Nitrogen in the soil. On the other hand, the Brown rotted wood is unattractive to the saproxylic communities due to the high recalcitrance of the accumulated lignin, low nutrient content, and low pH [65].

6. NITROGEN IN WOOD AND ITS ROLE IN DETERIORATION

Nitrogen is present in xylem cylinders of tree stems. Nitrogen gets diluted by the apposition of cell wall contents. When the wood fiber cells mature the Nitrogen content gets eluted into the transpiration stream. The maximum of the Nitrogen content in the cytoplasm gets removed when the xylem parenchyma cells die during the aging of sapwood and the formation of heartwood [68]. The trees have a recycling mechanism for the conservation and reuse of the Nitrogen in the cytoplasm of the xylary cells.

7. CONCLUSION

The wood degrading enzymes are the enzymes secreted by the wood degrading microbes i.e fungus or bacteria. The enzymes show the characteristic decomposition of the wood. Various termites and wood borer organisms contain various cellulose degrading microbes in their gut. These microbes release the enzymes in organism's gut and the cellulose from the wood gets degraded by these microbes and excreted out in the soil. That soil again contains those wood degrading microbes and enzymes too. Then from soil these organisms are again able to degrade the wood content, timber, or direct wood. The main purpose of this study is to bring all the wood-degrading microbes and wood-degrading enzymes in front. Further investigation regarding wood-degrading microbes and the enzymes secreted by them can be done to bring to light the solution for minimizing the loss of wood and timber by degradation.

REFERENCE

1. Singh AP, Singh S, Bari E. Bacterial Degradation of Wood by Tunnel Formation: Role of TEM in Understanding the Intricate Architecture of Tunnels and the Cell Wall Degradation Process. *Microscopy Today*. 2022;30(5):24–30.
2. Kameshwar AKS, Qin W. Recent Developments in Using Advanced Sequencing Technologies for the Genomic Studies of Lignin and Cellulose Degrading Microorganisms. *International journal of biological sciences*. 2016;12(2):156–71.
3. Hori C, Song R, Matsumoto K, Matsumoto R, Minkoff BB, Oita S, et al. Proteomic Characterization of Lignocellulolytic Enzymes Secreted by the Insect-Associated Fungus *Daldinia decipiens* Oita,

- Isolated from a Forest in Northern Japan. *Applied and environmental microbiology*. 2020;86(8):e02350-19.
4. Khandelwal N, Barbole RS, Banerjee SS, Chate GP, Biradar A V., Khandare JJ, et al. Budding trends in integrated pest management using advanced micro- and nano-materials: Challenges and perspectives. *Journal of Environmental Management*.2016;184:157–169.
 5. Nising CF, Hillebrand S, Rodefeld L. Recent developments in the total synthesis of fungicidal natural products—a crop protection perspective. *Chemical Communications*. 2011;47(14):4062.
 6. Alghuthaymi MA, Almoammar H, Rai M, Said-Galiev E, Abd-Elsalam KA. Myconanoparticles: synthesis and their role in phytopathogens management. *Biotechnology & Biotechnological Equipment*. 2015;29(2):221–236.
 7. Belt T, Harju A, Kilpeläinen P, Venäläinen M. Fungal Degradation of Extractives Plays an Important Role in the Brown Rot Decay of Scots Pine Heartwood. *Frontiers in Plant Science*.2022;13:1-11.
 8. Rani P, Khullar N. Antimicrobial evaluation of some medicinal plants for their anti-enteric potential against multi-drug resistant *Salmonella typhi*. *Phytotherapy Research*. 2004;18(8):670–673.
 9. Taneja N, Rani P, Emmanuel R, Khudaier BY, Sharma SK, Tewari R, et al. Nosocomial urinary tract infection due to *Leuconostocmesenteroides* at a tertiary care centre in north India. *Indian Journal of Medical Research*. 2005;122(2):178–179.
 10. Thakur RK, Rani P. THE INTERNATIONAL JOURNAL OF SCIENCE & TECHNOLEDGE Classification of Some Selected Lakes on the Basis of Water Quality Criteria : Most Probable Number. 2016;4(4):67–71.
 11. Björdal CG, Dayton PK. First evidence of microbial wood degradation in the coastal waters of the Antarctic. *Scientific reports*. 2020;10(1):12774.
 12. Álvarez C, Reyes-Sosa FM, Díez B. Enzymatic hydrolysis of biomass from wood. *Microbial Biotechnology*. 2016;9(2):149–156.
 13. Hori C, Gaskell J, Igarashi K, Samejima M, Hibbett D, Henrissat B, et al. Genomewide analysis of polysaccharides degrading enzymes in 11 white- and brown-rot Polyporales provides insight into mechanisms of wood decay. *Mycologia*. 2013;105(6):1412–1427.
 14. Cragg SM, Beckham GT, Bruce NC, Bugg TD, Distel DL, Dupree P, et al. Lignocellulose degradation mechanisms across the Tree of Life. *Current Opinion in Chemical Biology*.2015;29:108–119.
 15. Johansen KS. Lytic Polysaccharide Monooxygenases: The Microbial Power Tool for Lignocellulose Degradation. *Trends in Plant Science*. 2016;21(11):926–936.
 16. Kashif M, Jurvansuu J, Vainio EJ, Hantula J. Alphapartitiviruses of *Heterobasidion* Wood Decay Fungi Affect Each Other's Transmission and Host Growth. *Frontiers in cellular and infection microbiology*.2019;9:64.
 17. Barry Goodell, Jerrold E. Winandy JJM. Fungal Degradation of Wood: Emerging Data, New Insights and Changing Perceptions. *Coatings*. 2020;10(1210):1-19.
 18. Brink DP, Ravi K, Lidén G, Gorwa-Grauslund MF. Mapping the diversity of microbial lignin catabolism: experiences from the eLignin database. *Applied Microbiology and Biotechnology*. 2019;103(10):3979–4002.
 19. Gjelstrup Björdal C. Microbial degradation of waterlogged archaeological wood. *Journal of Cultural Heritage*. 2012;13(3):S118–S122.

20. Haidar R, Yacoub A, Vallance J, Compant S, Antonielli L, Saad A, et al. Bacteria associated with wood tissues of Esca-diseased grapevines: functional diversity and synergy with *Fomitiporia mediterranea* to degrade wood components. *Environmental microbiology*. 2021;23(10):6104–6121.
21. van der Lelie D, Taghavi S, McCorkle SM, Li L-L, Malfatti SA, Monteleone D, et al. The Metagenome of an Anaerobic Microbial Community Decomposing Poplar Wood Chips. *PLoS ONE*. 2012;7(5):e36740.
22. Balakshin M, Capanema E, Gracz H, Chang H, Jameel H. Quantification of lignin-carbohydrate linkages with high-resolution NMR spectroscopy. *Planta*. 2011;233(6):1097–110.
23. Ulyshen MD. Wood decomposition as influenced by invertebrates. *Biological Reviews*. 2016;91(1):70–85.
24. Morel M, Meux E, Mathieu Y, Thuillier A, Chibani K, Harvengt L, et al. Xenomic networks variability and adaptation traits in wood decaying fungi. *Microbial Biotechnology*. 2013;6(3):248–263.
25. Broda M. Natural Compounds for Wood Protection against Fungi—A Review. *Molecules*. 2020;25(15):3538.
26. Woźniak M. Antifungal Agents in Wood Protection—A Review. *Molecules*. 2022;27(19):6392.
27. Adnan M, Islam W, Shabbir A, Khan KA, Ghramh HA, Huang Z, et al. Plant defense against fungal pathogens by antagonistic fungi with *Trichoderma* in focus. *Microbial Pathogenesis*. 2019;129:7–18.
28. Melent'ev AI, Helisto P, Kuz'mina LI, Galimzianova NF, Aktuganov GE, Korpela T. [Application of *Bacillus*-antagonists for biocontrol of fungi degrading raw wood]. *Prikladnaiabiokhimiiaimikrobiologiia*. 2006;42(1):70–5.
29. Roberti R, De Vero L, Pisi A, Cazzara L, Cesari A. Modes of action of biocontrol agents of *Fusarium* wheat foot rot. *Mededelingen (Rijksuniversiteit te Gent. Fakulteit van de Landbouwkundige en Toegepaste Biologische Wetenschappen)*. 2001;66(2a):157–9.
30. Fiume G, Fiume F. Biological control of corky root in tomato. *Communications in agricultural and applied biological sciences*. 2008;73(2):233–48.
31. Susanto A, Sudharto PS, Purba RY. Enhancing biological control of basal stem rot disease (*Ganoderma boninense*) in oil palm plantations. *Mycopathologia*. 2005;159(1):153–157.
32. Mehta D, Anand P, Kumar V, Joshi A, Mathur D, Singh S, et al. ParaPep: A Web resource for experimentally validated antiparasitic peptide sequences and their structures. *Database*. 2014;2014:1-7.
33. Mathur D, Prakash S, Anand P, Kaur H, Agrawal P, Mehta A, et al. PEPlife: A Repository of the Half-life of Peptides. *Scientific Reports*. 2016;6:1-7.
34. Chaudhary K, Kumar R, Singh S, Tuknait A, Gautam A, Mathur D, et al. A web server and mobile app for computing hemolytic potency of peptides. *Scientific Reports*. 2016;6:1-13.
35. Tyagi A, Tuknait A, Anand P, Gupta S, Sharma M, Mathur D, et al. CancerPPD: A database of anticancer peptides and proteins. *Nucleic Acids Research*. 2015;43(D1):D837–D843.
36. Gautam A, Chaudhary K, Singh S, Joshi A, Anand P, Tuknait A, et al. Hemolytik: A database of experimentally determined hemolytic and non-hemolytic peptides. *Nucleic Acids Research*. 2014;42(D1):D444-D449.

37. Thambugala KM, Daranagama DA, Phillips AJL, Kannangara SD, Promputtha I. Fungi vs. Fungi in Biocontrol: An Overview of Fungal Antagonists Applied Against Fungal Plant Pathogens. *Frontiers in Cellular and Infection Microbiology*.2020;10:1-19.
38. Boro M, Sannyasi S, Chettri D, Verma AK. Microorganisms in biological control strategies to manage microbial plant pathogens: a review. *Archives of Microbiology*. 2022;204(11):666.
39. Shinn P, Chen L, Ferrer M, Itkin Z, Klumpp-Thomas C, McKnight C, et al. High-Throughput Screening for Drug Combinations. *Methods in molecular biology (Clifton, N.J.)*.2019;1939:11–35.
40. Longwell CK, Labanieh L, Cochran JR. High-throughput screening technologies for enzyme engineering. *Current opinion in biotechnology*.2017;48:196–202.
41. Ayala-Mendivil N, Calixto-Romo M de LA, Amaya-Delgado L, Casas-Godoy L, Sandoval G. High Throughput Screening: Developed Techniques for Cellulolytic and Xylanolytic Activities Assay. *Combinatorial chemistry & high throughput screening*. 2016;19(8):627–635.
42. Setubal JC, Almeida NF, Wattam AR. Comparative Genomics for Prokaryotes. *Methods in molecular biology (Clifton, N.J.)*.2018;1704:55–78.
43. Ciobanu D, Chan S, Ahrendt S, Quandt CA, Benny GL, Smith ME, et al. Protocol for single-cell isolation and genome amplification of environmental microbial eukaryotes for genomic analysis. *STAR protocols*. 2022;3(1):100968.
44. Emms DM, Kelly S. OrthoFinder: phylogenetic orthology inference for comparative genomics. *Genome biology*. 2019;20(1):238.
45. Armstrong J, Fiddes IT, Diekhans M, Paten B. Whole-Genome Alignment and Comparative Annotation. *Annual review of animal biosciences*.2019;7:41–64.
46. Massey SE. Comparative Microbial Genomics and Forensics. *Microbiology spectrum*. 2016;4(4):1-22.
47. Shinn P, Chen L, Ferrer M, Itkin Z, Klumpp-Thomas C, McKnight C, et al. High-Throughput Screening for Drug Combinations. 2019;1939:11–35.
48. Ciobanu D, Chan S, Ahrendt S, Quandt CA, Benny GL, Smith ME, et al. Protocol for single-cell isolation and genome amplification of environmental microbial eukaryotes for genomic analysis. *STAR Protocols*. 2022;3(1):100968.
49. Casado López S, Peng M, Issak TY, Daly P, de Vries RP, Mäkelä MR. Induction of Genes Encoding Plant Cell Wall-Degrading Carbohydrate-Active Enzymes by Lignocellulose-Derived Monosaccharides and Cellobiose in the White-Rot Fungus *Dichomitussqualens*. *Applied and environmental microbiology*. 2018;84(11):1-11.
50. Schwartz M, Perrot T, Aubert E, Dumarçay S, Favier F, Gérardin P, et al. Molecular recognition of wood polyphenols by phase II detoxification enzymes of the white rot *Trametes versicolor*. *Scientific Reports*. 2018;8(1):1–11.
51. Wu B, Gaskell J, Held BW, Toapanta C, Vuong T, Ahrendt S, et al. Substrate-Specific Differential Gene Expression and RNA Editing in the Brown Rot Fungus *Fomitopsis pinicola*. *Applied and environmental microbiology*. 2018;84(16):1-16.
52. Hori C, Gaskell J, Cullen D, Sabat G, Stewart PE, Lail K, et al. Multi-omic Analyses of Extensively Decayed *Pinus contorta* Reveal Expression of a Diverse Array of Lignocellulose-Degrading Enzymes. *Applied and environmental microbiology*. 2018;84(20):1-14.

53. Castaño JD, Zhang J, Anderson CE, Schilling JS. Oxidative Damage Control during Decay of Wood by Brown Rot Fungus Using Oxygen Radicals. *Applied and environmental microbiology*. 2018;84(22):1-10.
54. Skrede I, Solbakken MH, Hess J, Fossdal CG, Hegnar O, Alfredsen G. Wood Modification by Furfuryl Alcohol Resulted in a Delayed Decomposition Response in *Rhodonia (Postia) placenta*. *Applied and environmental microbiology*. 2019;85(14):1-21.
55. Almási É, Sahu N, Krizsán K, Bálint B, Kovács GM, Kiss B, et al. Comparative genomics reveals unique wood-decay strategies and fruiting body development in the Schizophyllaceae. *The New phytologist*. 2019;224(2):902–915.
56. Mali T, Mäki M, Hellén H, Heinonsalo J, Bäck J, Lundell T. Decomposition of spruce wood and release of volatile organic compounds depend on decay type, fungal interactions and enzyme production patterns. *FEMS microbiology ecology*. 2019;95(9):1-13.
57. Daly P, Peng M, Di Falco M, Lipzen A, Wang M, Ng V, et al. Glucose-Mediated Repression of Plant Biomass Utilization in the White-Rot Fungus *Dichomitussqualens*. *Applied and environmental microbiology*. 2019;85(23):1-15.
58. Pawlik A, Jaszek M, Sulej J, Janusz G. Light-regulated synthesis of extra- and intracellular enzymes related to wood degradation by the white rot fungus *Cerrena unicolor* during solid-state fermentation on ash sawdust-based medium. *Acta biochimica Polonica*. 2019;66(4):419–425.
59. Sulej J, Osińska-Jaroszuk M, Jaszek M, Grąz M, Kutkowska J, Pawlik A, et al. Antimicrobial and antioxidative potential of free and immobilised cellobiose dehydrogenase isolated from wood degrading fungi. *Fungal biology*. 2019;123(12):875–886.
60. Romero Victorica M, Soria MA, Batista-García RA, Ceja-Navarro JA, Vikram S, Ortiz M, et al. Neotropical termite microbiomes as sources of novel plant cell wall degrading enzymes. *Scientific reports*. 2020;10(1):3864.
61. Krause K, Jung E-M, Lindner J, Hardiman I, Poetschner J, Madhavan S, et al. Response of the wood-decay fungus *Schizophyllum commune* to co-occurring microorganisms. *PloS one*. 2020;15(4):1-20.
62. Miyauchi S, Hage H, Drula E, Lesage-Meessen L, Berrin J-G, Navarro D, et al. Conserved white-rot enzymatic mechanism for wood decay in the Basidiomycota genus *Pycnoporus*. *DNA research : an international journal for rapid publication of reports on genes and genomes*. 2020;27(2):1-14.
63. Alfaro M, Majcherczyk A, Kües U, Ramírez L, Pisabarro AG. Glucose counteracts wood-dependent induction of lignocellulolytic enzyme secretion in monokaryon and dikaryon submerged cultures of the white-rot basidiomycete *Pleurotus ostreatus*. *Scientific reports*. 2020;10(1):12421.
64. Umezawa K, Niikura M, Kojima Y, Goodell B, Yoshida M. Transcriptome analysis of the brown rot fungus *Gloeophyllum trabeum* during lignocellulose degradation. *PloS one*. 2020;15(12):e0243984.
65. Fukasawa Y. Ecological impacts of fungal wood decay types: A review of current knowledge and future research directions. *Ecol Res*. 2021;36:910–31.
66. Ren W, Penttilä R, Kasanen R et al. Bacteria Community Inhabiting Heterobasidion Fruiting Body and Associated Wood of Different Decay Classes. *Front Microbiol*. 2022;13:1-16
67. Dutton M V., Evans CS. Oxalate production by fungi: its role in pathogenicity and ecology in the soil environment. *Can J Microbiol*. 1996;42:881–95.

68. Cowling E & Merrill W. Nitrogen in wood and its role in wood deterioration. *Canadian Journal of Botany*. 2011;44:1539-1554.

UNDER PEER REVIEW