

Intelligent Energy Management System: Harnessing Fuzzy Logic for Charge Control

ABSTRACT

Aim: Charge controller that leverages fuzzy logic was developed to enhance the efficiency of traditional charge controllers. A model was constructed and assessed for its performance through MATLAB/Simulink. It allows for flexibility in controlling the variability of renewable energy sources. It also improves the efficiency and lifespan of energy storage systems while minimizing the impact on the grid and environment.

Study of the design: The PV system consists of a PV module, PWM inverter, MPPT controller and DC-DC converter which are connected using MATLAB/Simulink environment.

Methodology: we conducted validation tests to substantiate the advantages of our fuzzy charge controller. The creation of fuzzy rules was based on the system's performance and subsequently translated into precise values with the assistance of a fuzzy inference system. This Research Project was Completed in Two Months.

Results: Our findings clearly demonstrate that the implementation of fuzzy logic control results in superior charge controller performance. This, in turn, safeguards against battery discharging and overcharging during unpredictable weather conditions.

Conclusion: These protective measures are made possible through the decision-making capabilities of the DC-DC buck-boost converter, which effectively regulates both the voltage and current output of the PV module.

Keywords: controller, fuzzy logic, voltage, current, module

I. INTRODUCTION

Energy holds immense significance for both industrialization and human consumption. Many developing countries, like Nigeria, heavily rely on renewable energy sources, notably solar energy. Recent global depletion of fossil fuel reserves has prompted a shift towards diversifying energy sources, primarily focusing on renewables. The introduction of electric vehicles, batteries, and power banks has significantly elevated living standards for households. Among renewable sources, the photovoltaic (PV) system has gained substantial attention among researchers [1].

Addressing greenhouse gas emissions is a top priority for environmental regulatory bodies striving to establish sustainable, low-emission energy sources. Solar energy emerges as a highly promising and emission-free energy source, making it environmentally safe [2]. Solar energy is a consistently reliable source of renewable energy with numerous enduring benefits. However, the cost implications of PV systems have limited their accessibility to some households. Hence, there's a need to design PV systems capable of harnessing

30 maximum solar power regardless of weather conditions and to enhance the efficiency of
31 power generation from solar PV panels [3][4][5].

32 One method to optimize power generation involves tracking the maximum power point by
33 comparing the PV module's measured voltage with a reference voltage to adjust the duty
34 cycle of the DC-DC converter. However, the conventional perturb and observe method used
35 in PV modules tends to have a slow tracking speed as it perturbs the voltage to reach the
36 maximum voltage [6].

37 Efficiency is paramount in areas with limited access to the electric grid where solar systems
38 are widely adopted. Lead-acid batteries are commonly used in solar systems to meet these
39 needs, but the absence of a suitable charge control system can lead to overcharging, which
40 damages the batteries. To prevent this, a well-designed charge control system is necessary
41 to cease charging once the maximum capacity is reached, preserving the storage energy
42 capacity and extending the power supply service life. A promising alternative approach for
43 controlling complex processes, particularly those challenging to analyze with conventional
44 techniques, is the use of fuzzy logic controllers. In this research endeavor, a model has been
45 developed to investigate the impact of fuzzy logic control on charge controllers under
46 unpredictable weather conditions.

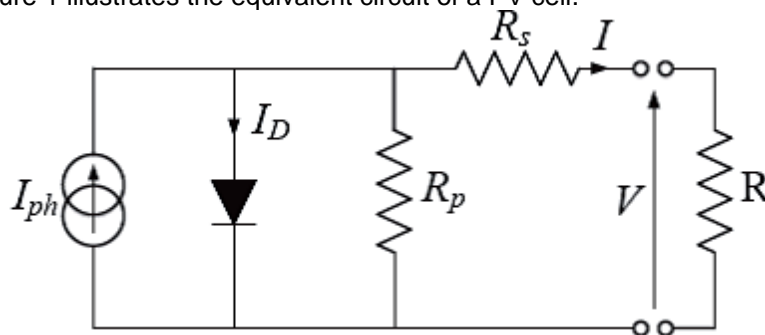
47

48 **Modeling Photovoltaic Systems**

49 In this research study, the photovoltaic (PV) system comprises a PV module, a battery, and
50 a DC-DC converter. The fuzzy logic Maximum Power Point Tracking (MPPT) control method
51 determines the duty cycle (D) provided to the DC-DC converter, which it uses to regulate
52 both current and voltage.

53 **Mathematical Representation of a Photovoltaic Module**

54 In the realm of photovoltaics, the conversion of solar radiation into electricity occurs through
55 the photovoltaic effect. As solar intensity increases, photons with energy exceeding the
56 semiconductor's band gap energy create electron-hole pairs in proportion to the incident
57 radiation. Figure 1 illustrates the equivalent circuit of a PV cell.



58

59 **Fig.1: Equivalent circuit of a PV cell**

60 As depicted in the above figure, I_{ph} corresponds to the photocurrent of the cell, R_{sh} signifies
61 the cell's shunt resistance, and R_s represents the cell's series resistance. When multiple PV
62 cells are combined, they form PV modules, and these modules can be interconnected in
63 parallel-series configurations to create PV arrays. Equations (1) to (4) provide the
64 mathematical model equations for photovoltaic panels, as described in references [7] and
65 [8].

66 For the module photocurrent,

$$I_{ph} = [I_{scr} + K_i(T - 298)] * \lambda/1000$$

67 For module reverse saturation current,

$$I_{rs} = I_{scr} / [\exp(q \cdot \frac{V_{oc}}{N_s} \cdot k \cdot A \cdot T)]$$

68 Module saturation current I_s varies according to cell temperature, given as:

$$I_s = I_{rs} * \left[\frac{T}{T_r} \right] * 3 * \exp[q * Ego \left(\left(\frac{1}{T_r} \right) - \left(\frac{1}{T} \right) \right)]$$

69 The PV module current is given as:

$$I_{pv} = N_p * I_{ph} - N_p * I_s \left[\exp \left(\frac{q * V_{pv} + I_{pv} * R_s}{N_s * A * k * T} \right) \right]$$

71 Where, $V_{PV} = V_{OC}$, $N_P = 2$, $N_S = 2$

72 In the equations above, various parameters are defined as follows: V_{PV} represents the output
 73 voltage of the PV module, V_{OC} stands for the open-circuit voltage, I_{pv} represents the output
 74 current of the PV module, T_r is the reference temperature, I_{ph} denotes the light-generated
 75 current, I_s corresponds to the saturation current of the PV module (in amperes), A is the
 76 ideality factor set at 1.6, K is the Boltzmann constant (1.3805×10^{-23} J/K), q represents the
 77 charge of an electron (1.6×10^{-19} C), R_s symbolizes the series resistance of the PV module,
 78 I_{scr} represents the short-circuit current of the PV module, K_i represents the temperature
 79 coefficient for short-circuit current ($I_{scr} = 0.0017$ A/°C), λ represents the illumination of the
 80 PV module in watts per square meter (W/m^2), Ego signifies the band gap energy for silicon
 81 at 1.1 eV, N_S represents the number of cells connected in series, and NP represents the
 82 number of cells connected in parallel.

83 In this research project, the 1Soltech 1STH-215-P PV module is chosen for the proposed
 84 model in MATLAB/Simulink. The specifications for the PV module, the DC-DC converter, and
 85 the battery are presented in Table 1 and Figure 2. The PV array is composed of two PV
 86 modules connected in series. Figure 3 and Figure 4 depict the variations in current-voltage
 87 (I-V) and power-voltage (P-V) outputs concerning changes in irradiation and temperature.
 88 Specifically, Figure 3 illustrates the fluctuations in current and power at various radiation
 89 levels under a constant temperature of 25°C, while Figure 4 displays the changes in current
 90 and power at different temperatures under a constant radiation level of 1000 W/m^2 .

91 **Table 1: Data specifications for the PV system**

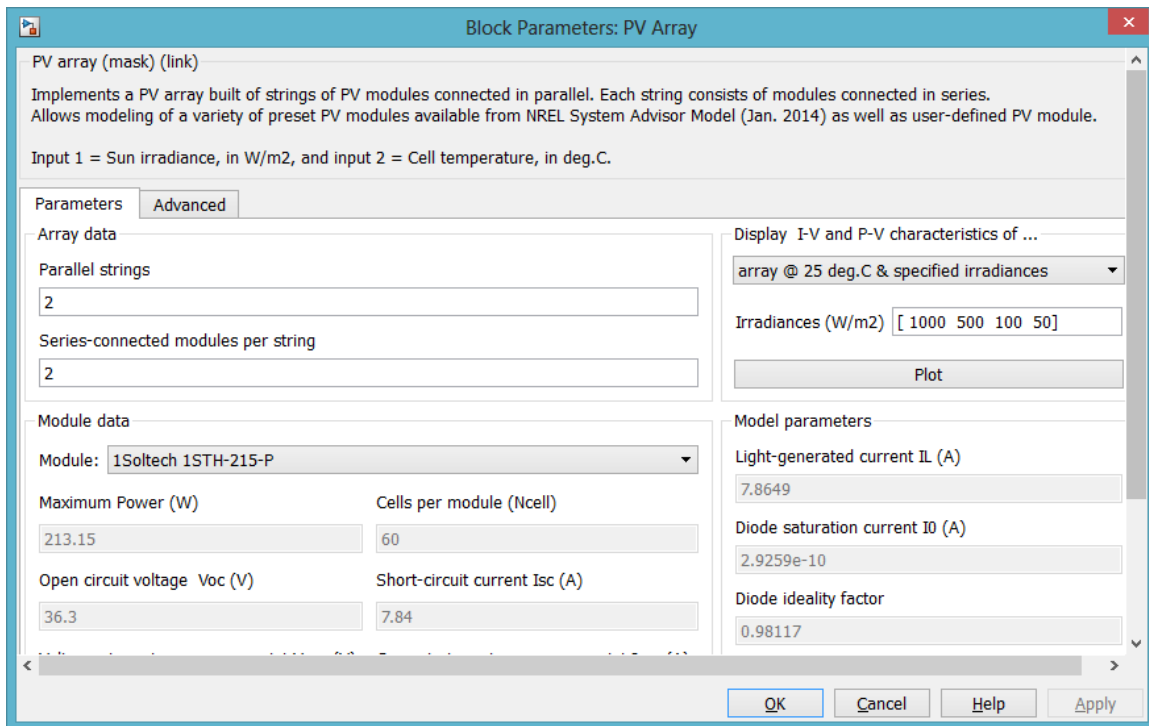
PV Module		DC-DC converter		Battery	
Parameter	Value	Parameter	Value	Parameter	Value
P_{max}(W)	213.5	Output Capacitor (farad)	100e-6	State of Charge (SOC) %	65
V_{oc}(V)	36.3	Inductance(H)	2e-3	Nominal Voltage	12

$I_{sc}(A)$	7.84	Input capacitor (farad)	100e-4	Rated Capacity	100
$V_{mp}(V)$	29	Switch frequency (KHz)	5	Fully Charged Voltage(V)	108
$I_{mp}(A)$	7.35				

92

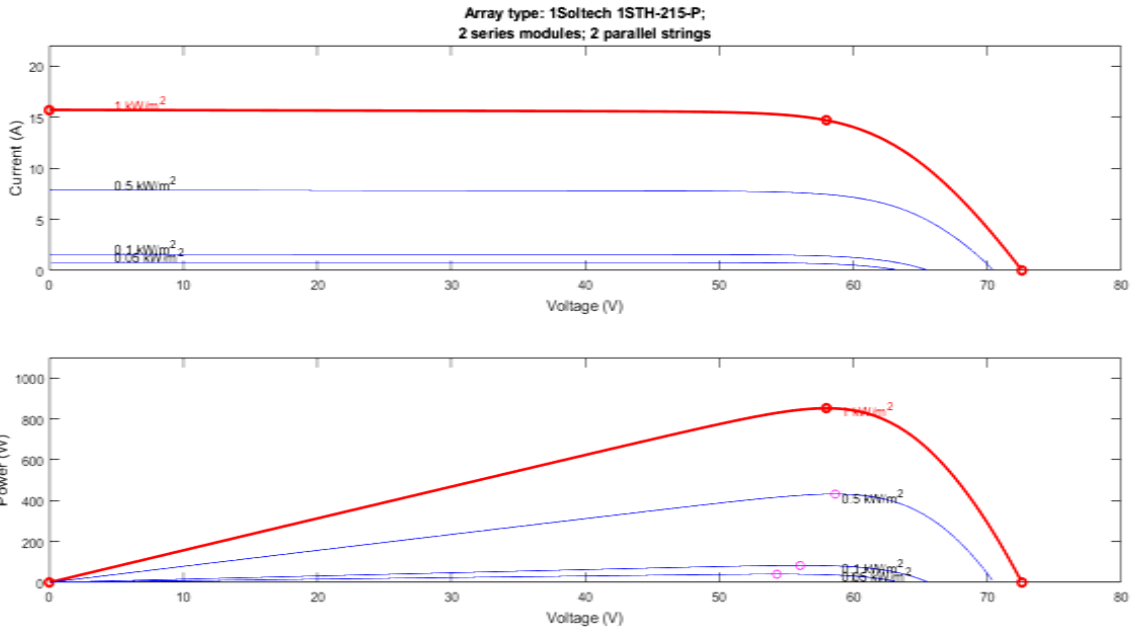
93

94



95

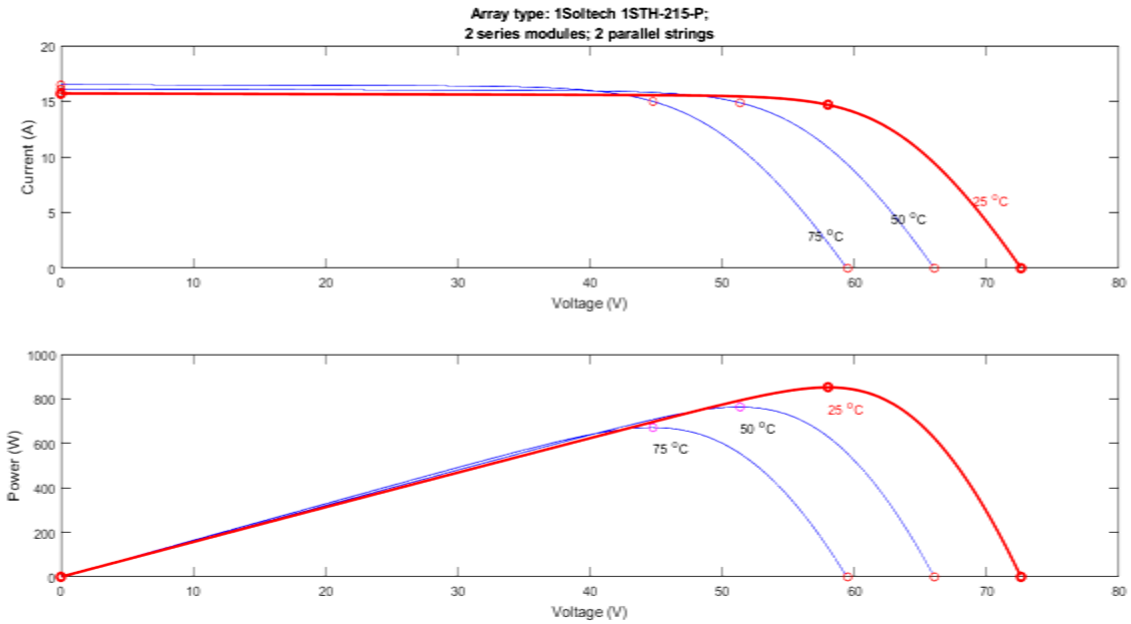
96 **Fig. 2: Design specification for PV module**



97

98 **Fig. 3: Current and Power variation at different radiation under specific temperature of**
 99 **25°C**

100



101

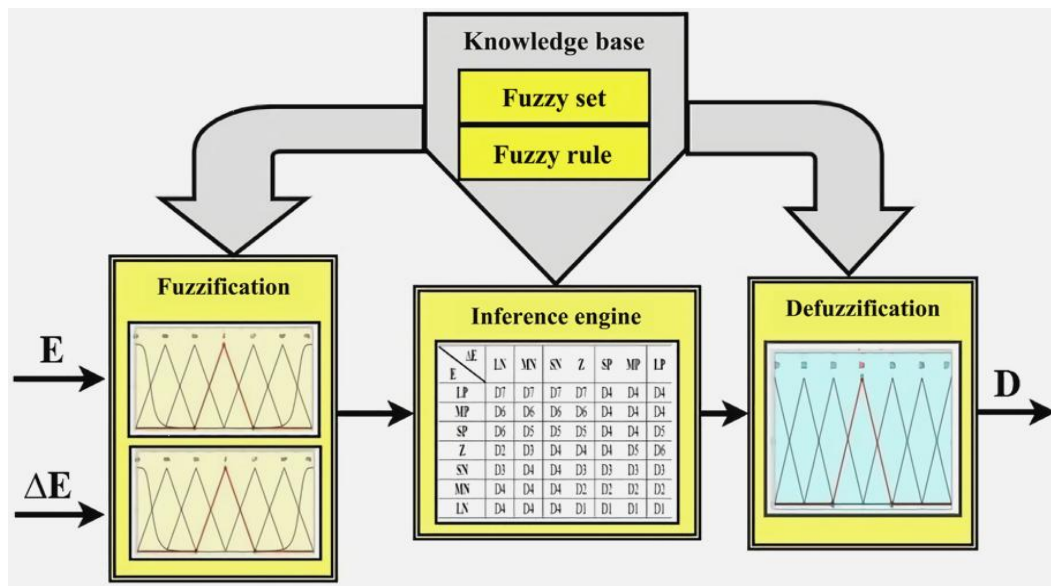
102 **Fig. 4: Current and Power variation at different temperatures under specific irradiation**
 103 **of 1000W/m²**

104
105
106
107
108
109
110
111
112
113
114
115
116
117
118
119
120
121
122
123
124
125

II. FUZZY LOGIC CONTROLLER FOR MAXIMUM POWER POINT TRACKING (MPPT)

The structure of a fuzzy logic controller is rooted in the concept of fuzzy sets, where a variable can belong to one or more sets with a specified degree of membership. The advantages of employing fuzzy logic are manifold: it enables the emulation of human reasoning processes within computers, facilitates the quantification of imprecise information, and enables decision-making based on vague or uncertain information. For instance, it can be used to determine whether a resistive load is connected to the PV module through the buck-boost DC-DC converter [9].

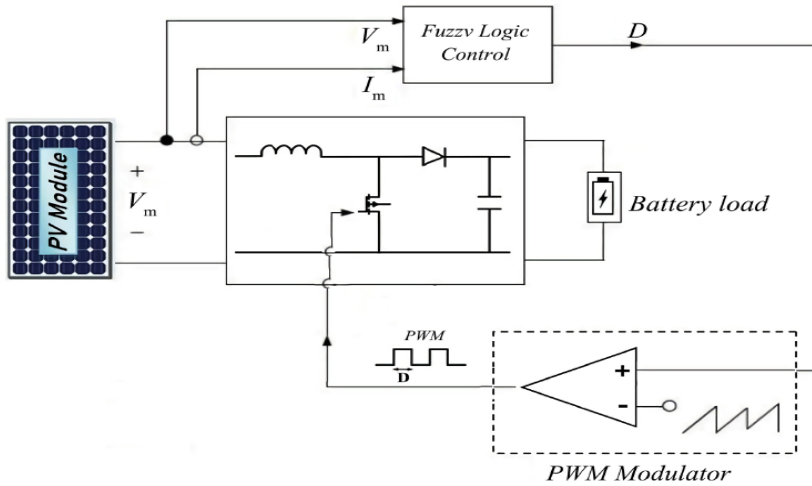
The application of fuzzy logic in MPPT techniques harnesses human expertise and knowledge to construct the controller. Rules can be formulated based on human experience and system performance. In the context of MPPT, a fuzzy logic controller is devised to govern the operation of the buck-boost converter. The fuzzy logic control comprises three essential components: fuzzification, a knowledge base (comprising fuzzy rule sets or a database), and defuzzification (as depicted in Figure 5). The typical sequence involves converting input values into fuzzy representations through the fuzzification process. These fuzzy values then traverse the knowledge base, where decisions are made based on IF-THEN rules, guided by the fuzzy rules. Ultimately, the fuzzy values are transformed into precise, crisp values during defuzzification.



126
127
128
129
130
131
132
133
134

Fig. 5: Description of Fuzzy Logic Control for MPPT [10]

The schematic for the fuzzy logic-based maximum power tracker is depicted in Figure 6 below. As evident, the input parameters for the fuzzy controller comprise the output voltage and current of the PV module, denoted as V_m and I_m . The fuzzy logic controller generates a signal that is directly proportional to the duty cycle of the converter, which is then transmitted to the DC-DC converter through the utilization of a pulse width modulator (PWM).



135
136
137
138
139
140
141
142
143
144
145

Fig. 6: Maximum power point tracker using Fuzzy Logic Control

III.FUZZIFICATION

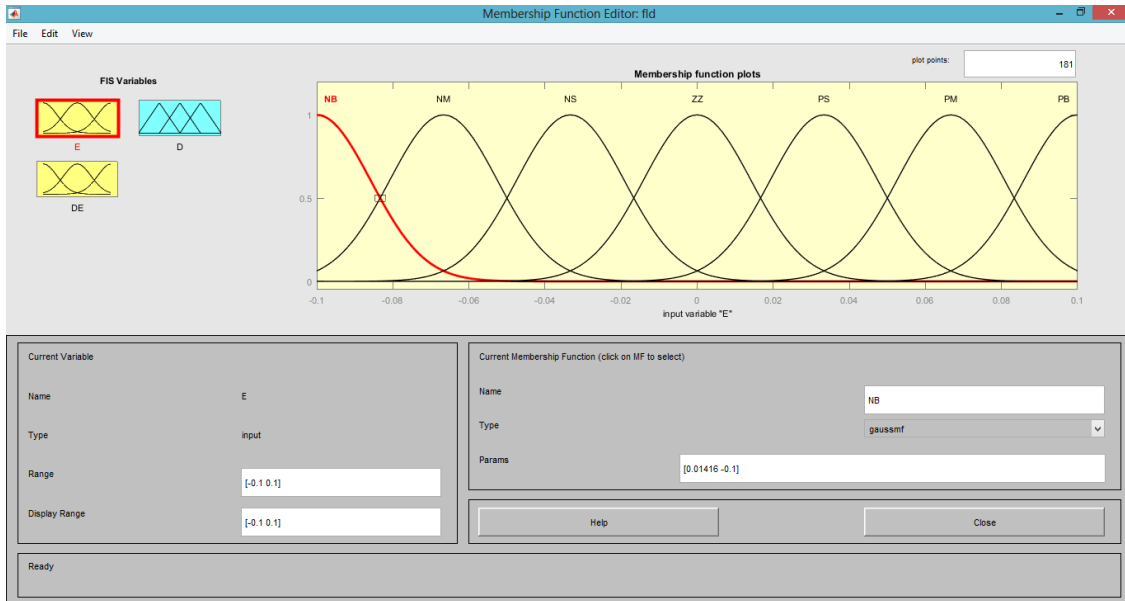
This involves the conversion of crisp values to fuzzy values, the actual voltage (V) and current (I) can be calculated and the power will be derived easily using ($P = V \times I$). Different criteria were constructed based on two input values which include error E (derived from slope of P-I curve) and change of error (CE). The error (E) and change of error (CE) can be expressed as

$$E(k) = \frac{P(k) - P(k-1)}{V(k) - V(k-1)}$$

$$DE(k) = E(k) - E(k-1)$$

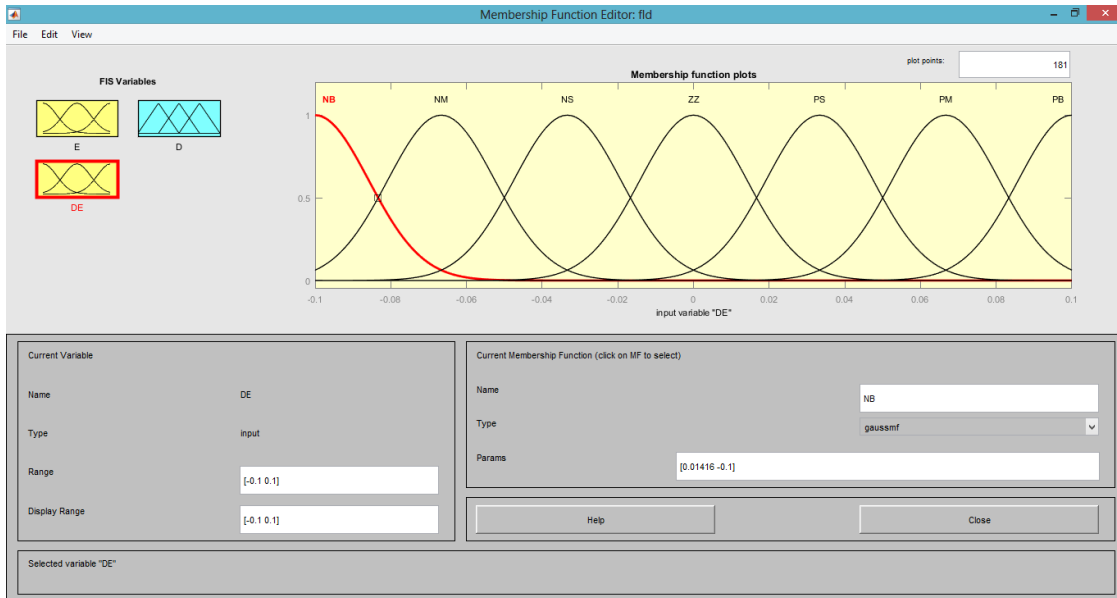
146
147
148
149
150
151
152
153
154
155
156

From the equation, $P(k)$ and $I(k)$ represents the power and current of the PV array. The input $E(k)$ depicts that if the operating point at the sampling instant k is located on the left or on the right of the MPP on the P-I characteristic, the input $DE(k)$ expresses the displacement direction of this operating point, the output $D(k)$ represents the change in duty cycle of the DC-DC converter. The input variables of the fuzzy controller (E, DE) are converted to the linguistic variables such as Negative-Big (NB), Negative-Medium (NM), Negative-Small (NS), Zero (ZZ), Positive-Small (PS), Positive-Medium (PM) and Positive-Big (PB) using basic fuzzy subsets. Figure 7 shows the membership functions of the seven (7) basic fuzzy subsets for the respective input and output variables.



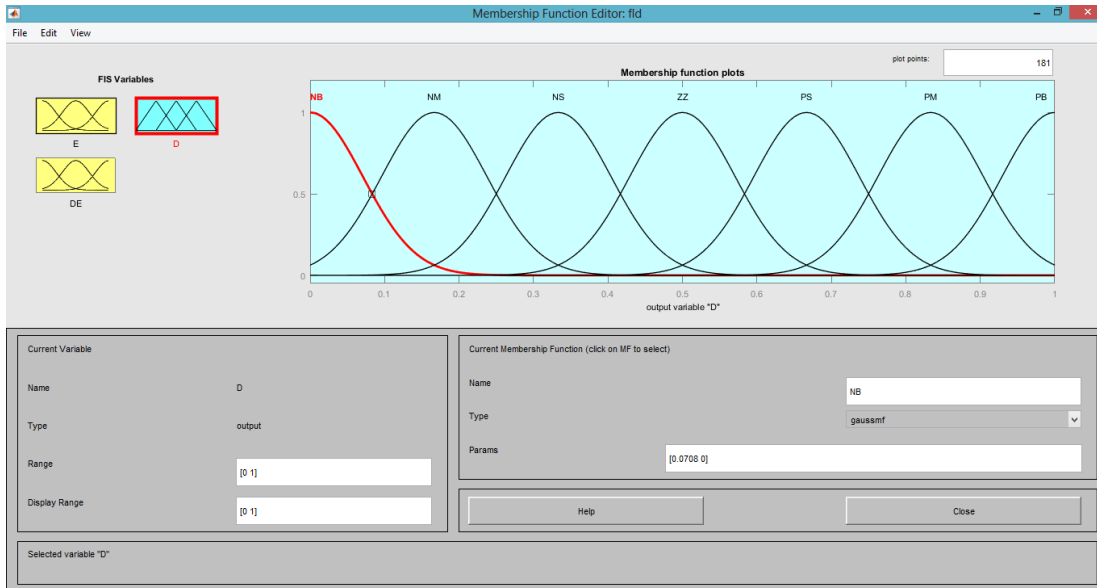
157
158
159
160
161

Fig. 7: Membership function for Input Error (E)



162
163
164

Fig. 8: Membership function for Input Change of Error (DE)



165
166
167
168
169
170
171
172
173
174
175
176
177

Fig. 9: Membership function for Output Duty Cycle (D)

Fuzzy Inference System (FIS)

The Fuzzy Inference System involves the application of fuzzy rules formulated based on system performance and experience. Fuzzy inputs are generated from crisp values during the fuzzification process; the crisp values were fuzzified to derive the linguistic variables. Table 2 shows the rules of the fuzzy controller for all fuzzy set entries of inputs E (Error) and DE (Change in Error) and output (D) Duty Cycle. A total of 49 (Forty-Nine) rules are presented in Table 2.

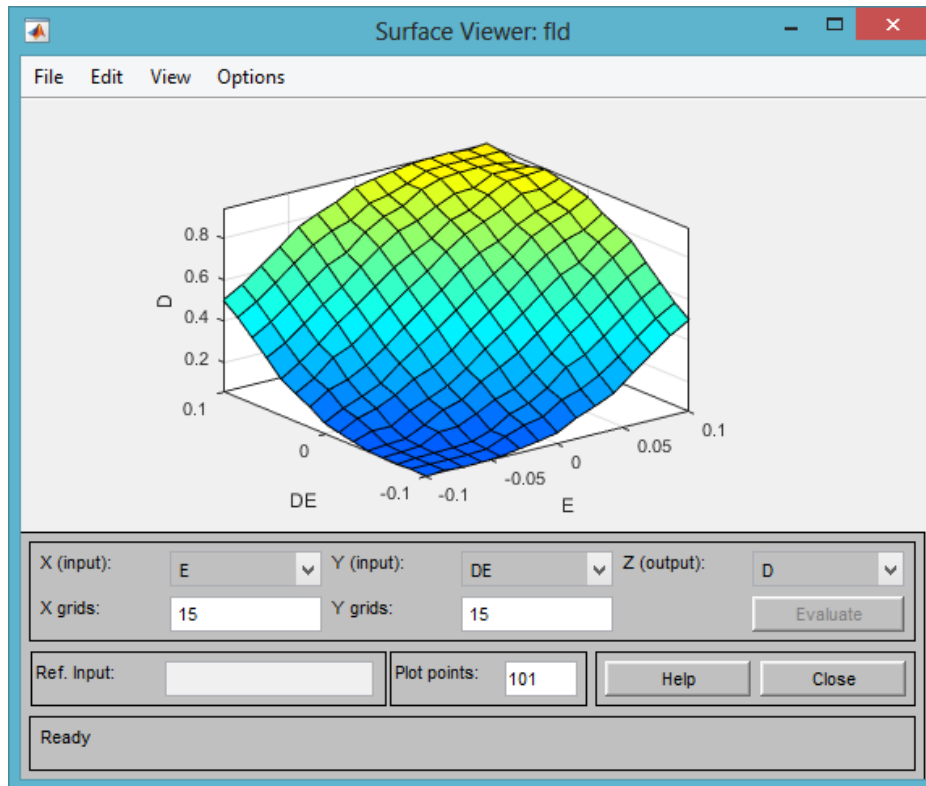
178 **Table 2: Fuzzy Rules for the Charge controller considering Error(E), Change of Error**
179 **(DE) and Duty Cycle (D)**

D		DE						
		NB	NM	NS	ZZ	PS	PM	PB
E	NB	NB	NB	NB	NB	NM	NS	Z
	NM	NB	NB	NB	NM	NS	Z	PS
	NS	NB	NB	NM	NS	Z	PS	PM
	ZZ	NB	NM	NS	Z	PS	PS	PM
	PS	NM	NS	Z	PS	PS	PM	PM
	PM	NS	Z	Z	PS	PM	PM	PB
	PB	Z	Z	PS	PM	PM	PB	PB

180
181
182
183
184
185

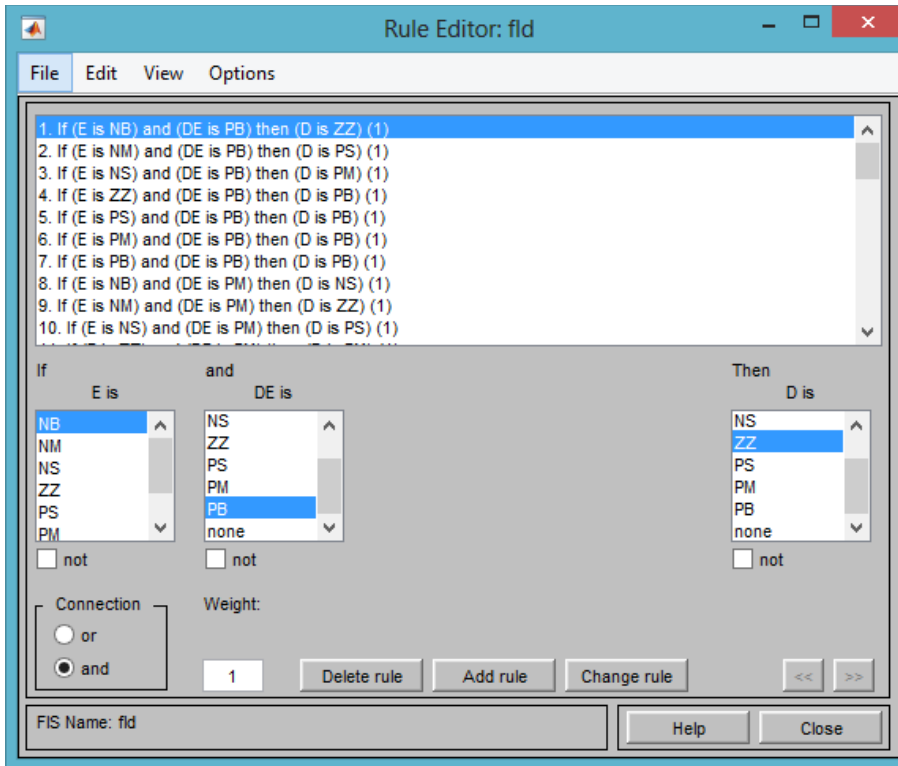
186 The rules expressed in Table 2 can be presented in the form of 3D Surface graph as shown
187 in Figure 10, Figure 11 demonstrates the control rule such as “IF E(Error) is NB(Negative-
188 Big) and DE(change in Error) is PB(Positive- Big), THEN Duty Cycle D is ZZ(Zero)”, this
189 implies that if the operating point is far away from the Maximum Power Point(MPP) towards
190 the Left Hand Side and change of slope in P-I characteristics is big in the opposite direction,
191 then duty cycle is increased. Figure 12 shows the rule viewer, when the red ruler at the input
192 D and DE was moved right and left, the Duty Cycle (D) values increased and decreased
193 according to the set rules inputted into the Fuzzy Inference System (FIS), this shows the
194 effectiveness of the fuzzy logic control.

195



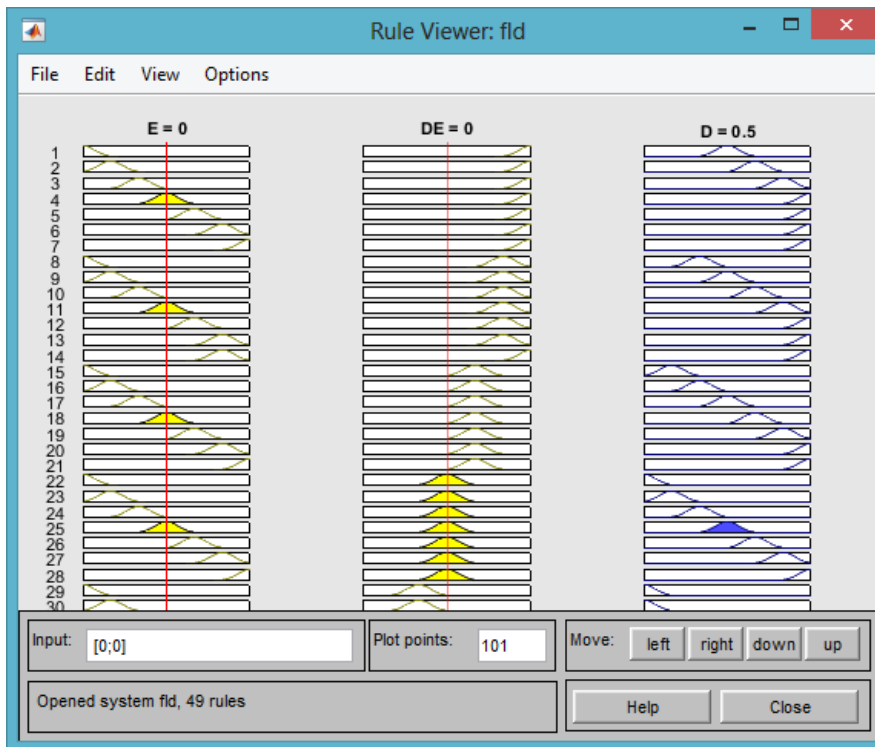
196
197
198

Fig. 10: 3-D Surface Graph for the charge controller



199
200
201
202

Fig. 11: Rule Editor for the Charge Controller



203
204

Fig. 12: Rule Viewer for the Charge Controller

205
206
207
208
209
210
211

Defuzzification

There is need for fuzzy controller output to be translated from fuzzy values to crisp values because the DC—DC buck boost converter needs the crisp values of Duty Cycle D received from the PWM at its entry [11], this transformation process is called the Defuzzification. The determination of the centre of gravity (COG) is the most widely used form of Defuzzification. In data representation, the center of gravity is computed by using [12]:

$$D = \frac{\sum_{j=1}^n \mu(\Delta D_j) \cdot \Delta D_j}{\sum_{j=1}^n \mu(\Delta D_j)}$$

212 where D is the crisp value output value, ΔD_j is the center of max-min composition at the
213 output Membership Functions, $\mu(\Delta D_j)$ is the maximum of the j th membership function, D_j
214 the j th input value.

215
216

IV. RESULTS AND DISCUSSION

217

218

219

220

221

222

223

224

225

226

227

228

229

230

231

In this Simulation Model, the design of the fuzzy logic-based MPPT Controller is done under uncertain conditions. The uncertain condition is inputted through the signal builder block in the SIMULINK. The efficiency of the system was evaluated from the results of the simulation. The Model consists of PV array (1Soltech 1STH- 215-P), DC-DC Buck-Boost converter with MPPT controller connected to battery as implemented in matlab/simulink environment (Figure 13). The output of the PV Module is transferred to the connected DC-DC Buck-Boost converter, the Fuzzy Logic Control generated the duty cycle which is transmitted to the PWM (Pulse Width Modulator) that sends information to the DC-DC Buck-Boost converter as shown in the simulink model. The role of controller is to track the maximum power from the PV Module under uncertain conditions. The uncertain conditions can be the change in the temperature and irradiance level.

232

233

234

235

236

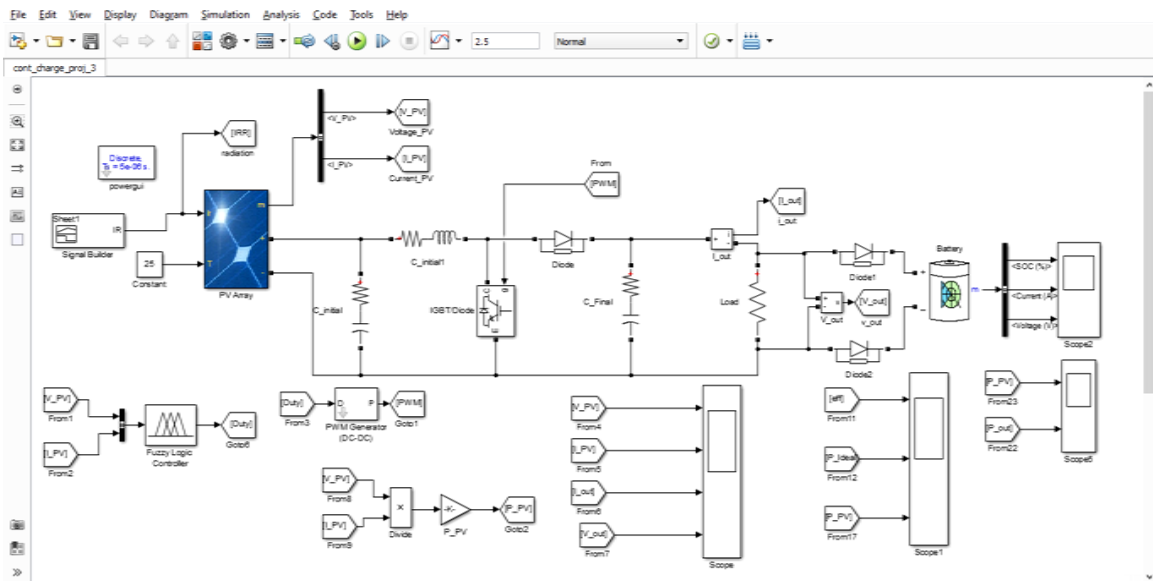
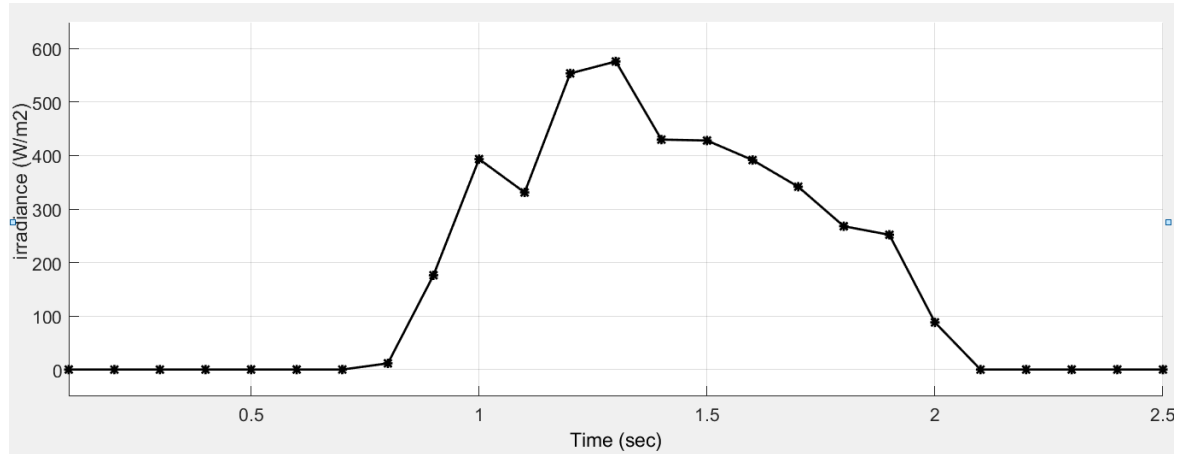


Fig. 13: Complete Simulink Model including the PV Array, Converter and Battery

237
238
239
240
241
242
243
244

Uncertain weather conditions

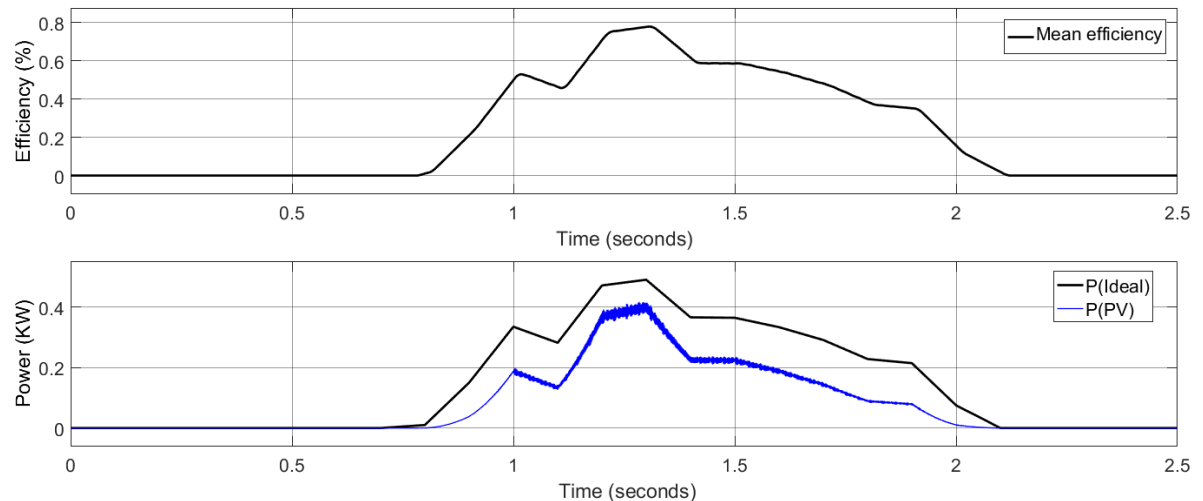
Signal builder block in the simulink model inputs the uncertain signal to the PV module, the uncertain conditions includes different weather conditions that can affect the performance of charge controller. The irradiance level distribution is shown in Figure 14, solar radiation continuously changes within a time sequence, the maximum irradiance noticed is approximately 600W/m^2 which occurs during the noon of the day.



245
246
247
248
249
250
251
252
253
254
255
256

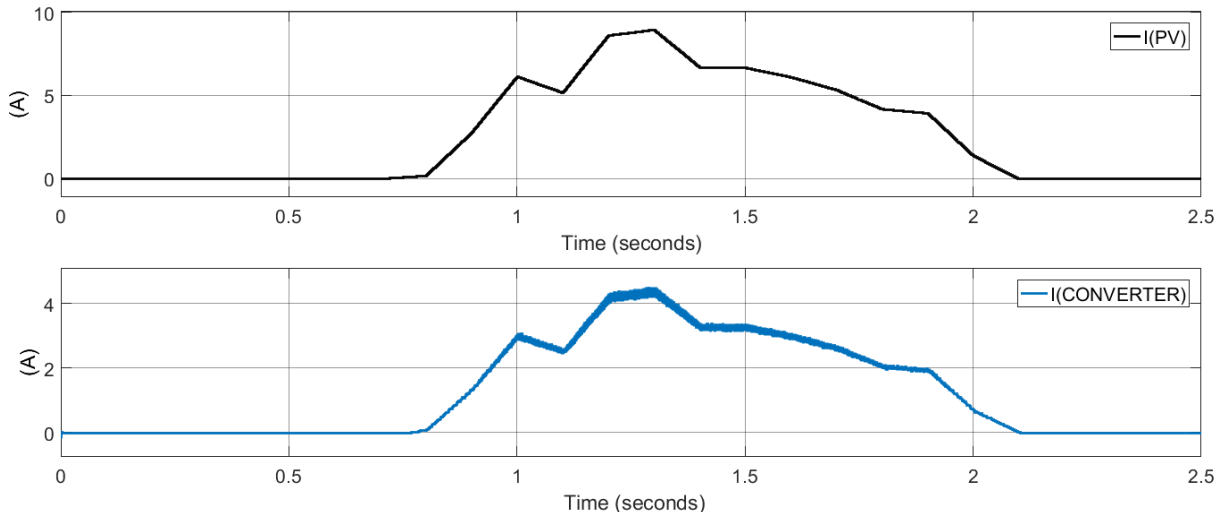
Fig. 14: Solar radiation distribution profile

Figure 15 shows the relationship between the ideal PV power and the generated PV power, the PV power generated shows similar trend with the ideal PV power, the peak value of PV power is about 400Watt which is close to the peak ideal power of 500Watt, the power changes from about 0 to 400Watt, the efficiency of the fuzzy MPPT charge controller is approximately 80%, the PV voltage generated by the fuzzy logic control is consistent with the solar radiation as shown in Figure 15. Figure 16 and 17 shows that the converter reduced the PV current and increased the PV voltage based on the fuzzy rules, this is to avoid battery overcharging or undercharging.



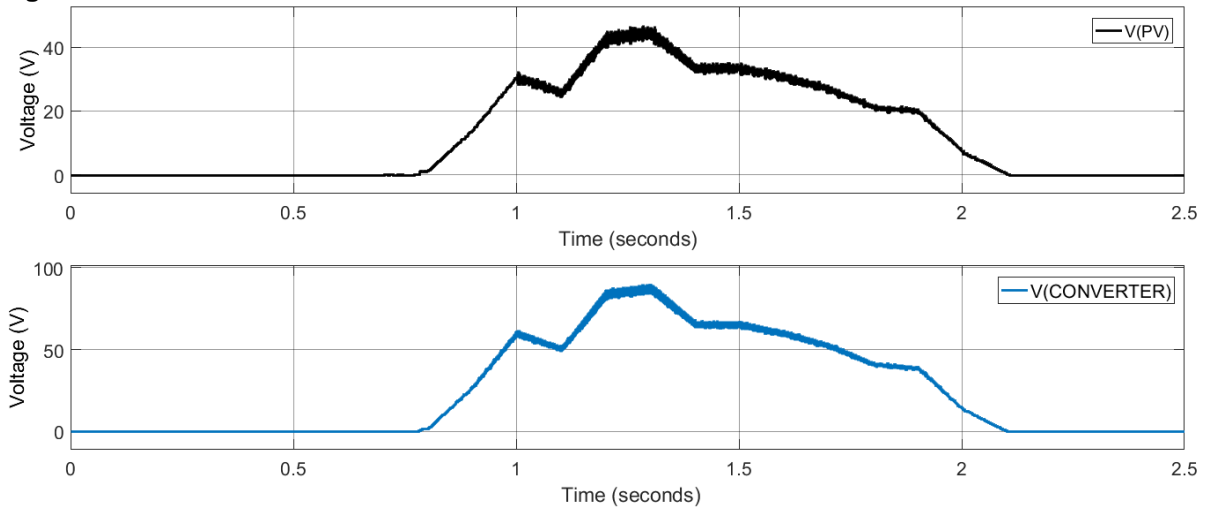
257
258
259

Fig. 15: Efficiency and PV Power Profile



260
261

Fig. 16: Profile for PV Current and Converter Current



262
263
264
265
266
267
268
269
270
271
272
273
274
275
276
277
278
279
280

Fig. 17: Profile for PV Voltage and Converter Voltage

V. CONCLUSION

When the uncertain weather conditions are varied, the PV module was able to attain a maximum power point (MPP). In this research work, fuzzy logic based MPPT charge controller was able to regulate the voltage and current without overcharging or undercharging the battery, the fuzzy logic charge controller was simulated using matlab/simulink shows that the performance of charge controller can be improved by incorporating fuzzy logic into its operations.

REFERENCES

281

282

283 [1] V. Ashita, K. M. Dharmendra, P. Amit, J. S. Geetika, "Simulation, Design and
284 Analysis of Different Types of Solar Based Charge Controllers on
285 MATLAB/Simulink," *International Journal of Engineering Research and Technology*,
286 ISSN 0974-3154, 14:180 -197, 2021

287 [2] L. K. Narwat, J. Dhillon, "Design and Operation of Fuzzy Logic Based MPPT
288 Controller under Uncertain Condition," *Journal of Physics: Conference Series*, 1854,
289 2021, doi:10.1088/1742-6596/1854/1/012035

290 [3] J. Adeeb, A. Farhan, A. Al-Salaymeh, "Temperature Effect on Performance
291 of Different Solar Cell Technologies," *J. Ecol. Eng.*, vol. 20, no. 5, pp. 249–254,
292 2019.

293 [4] M. Rokonuzzaman, M. Shakeri, F. A. Hamid, M. K. Mishu, J. Pasupuleti, K.
294 S. Rahman, S. K. Tiong and Nowshad Amin, "IoT-Enabled High Efficiency Smart
295 Solar Charge Controller with Maximum Power Point Tracking—Design, Hardware
296 Implementation and Performance Testing," *Electronics*, 2020, 9, 1267;
297 doi:10.3390/electronics9081267

298 [5] S. D. Surendra, S. Ruchi, P. Raghavendra, "Using Improved MPPT Charge
299 Controller Improvement Functioning Efficiency of Power Grid Connected Solar
300 Photovoltaic System," *IOP Conf. Series: Materials Science and Engineering*, 1099
301 (2021), 012083doi:10.1088/1757-899X/1099/1/012083

302 [6] B. Bendib, F. Krim, H. Belmili, M. F. Almi, S. Boulouma, "Advanced Fuzzy
303 MPPT Controller for a stand-alone PV system," *The International Conference on
304 Technologies and Materials for Renewable Energy, Environment and Sustainability*,
305 *Energy Procedia*, 50 (2014), 383-392

306 [7] M. Veerachary, "Power tracking for nonlinear PV sources with coupled
307 inductor SEPIC converter," *IEEE transactions on aerospace and electronic
308 systems*, 41: 3 (2005): 1019- 1029.

309 [8] I. H. Altas, A. M. Sharaf, "A photovoltaic array simulation model for matlab-
310 simulink GUI environment," *Clean Electrical Power, 2007. ICCEP'07. International
311 Conference on. IEEE*, 2007.

312 [9] I. A. Samuel, O. Izi, T. E. Somefun, A. A. Awelewa, J. Katende, "Design and
313 performance analysis of a charge controller for solar system using
314 MATLAB/SIMULINK," *Front. Energy Res.* 10:1017017, 2022, doi:
315 10.3389/fenrg.2022.1017017

316 [10] M. Y. Baramadeh, M. A. A. Abouelela, S. M. Alghuwainem, "Maximum
317 Power Point Tracker Controller Using Fuzzy Logic Control with Battery Load for
318 Photovoltaics Systems," *Smart Grid and Renewable Energy*, 12:163-181, 2021,
319 <https://doi.org/10.4236/sgre.2021.1210010>

320 [11] A. O Baba, G. Liu, X, Chen "Classification and Evaluation Review of
321 Maximum Power Point Tracking Methods," *Sustainable Futures*, 2:100020,
322 2020.<https://doi.org/10.1016/j.sftr.2020.100020>

323 [12] A. E. Khateb, N. A. Rahim, J. Selvaraj, M. N. Uddin, "Fuzzy-logic controller-
324 based SEPIC converter for maximum power point tracking," *IEEE Trans Industry*
325 *Appl*, 2014; 50(4):2349e58.

326

327