

# Effect of selected leaf extracts on the mycelial radial growth of *Phytophthora* sp. causing corm rot of colocasia (*Colocasia esculenta* L.)

## ABSTRACT

In the present study the pathogenicity of *Phytophthora* sp. causing corm rot of colocasia was proved by Koch's postulates. Sixteen infected corm samples were collected from different markets in two districts (West Godavari and East Godavari) of Andhra Pradesh and pot experiment was carried out in the Department of Plant Pathology, SHUATS, Prayagraj during *Rabi* season (2022-23). Out of those, the sample which collected from Kovvur Rythu Bazar, West Godavari district in Andhra Pradesh shows high pathogenicity. Five leaf extracts viz., neem, mint, lantana, tulsi and periwinkle @ 5, 10 and 15% concentrations were evaluated by using poisoned food technique against *Phytophthora* sp. Among all the leaf extracts, neem leaf extract @ 5, 10 and 15% concentrations recorded minimum radial growth (26.43, 24.73 and 22.77 mm, respectively) and maximum per cent inhibition (33.27, 37.59 and 42.55%, respectively) of *Phytophthora* sp. at 120 hrs of incubation as compared to other leaf extracts, treated (Metalaxyl) and untreated checks. The present study is limited to one trial in Prayagraj conditions, therefore to substantiate the present results more such trials are required in future for further recommendation.

**Key words:** Colocasia, Corm rot, Koch's postulate, Leaf extracts, Pathogenicity, *Phytophthora* sp., Poisoned food technique.

## 1. INTRODUCTION

Taro [*Colocasia esculenta* (L.) Schott], also known as old cocoyam, true cocoyam is a water-loving herbaceous plant. Taro is ranked the 14th most consumed tuber vegetable in the world, with production capacity of 12 million tonnes generated from approximately 2 million hectares of land with a corresponding average yield of 6.5 tonnes/ ha (Abdulai *et al.*, 2020). It is the most important edible species of the monocotyledonous family Araceae. The plant helps in achieving food security because it is a multipurpose crop in which both the corms and leaves are used in different forms as different food products (Singh *et al.*, 2012).

The leaves are rich in fiber and are sources of other important nutritional compounds such as vitamins A and C (Ugwujaet *et al.*, 2022). Despite these numerous socioeconomic benefits of taro plants, the yield of this crop continues to decline yearly due to a number of constraints. Taro is affected by at least 10 major diseases and pests in different parts of the world and among them taro blight disease and corm rot caused by a fungus-like oomycete *Phytophthora colocasiae* Racib is most important disease (Nelson *et al.*,

2011). The disease was first reported and described by Raciborski on taro plants in Java in 1900. The pathogen is the most serious disease-causing organism that causes blight disease of taro worldwide and is the principal cause of huge yield losses up to 100% of both corm and leaf (Adomako *et al.*, 2017). The disease has severely constrained taro production in American Samoa. American Samoa were devastated by an epidemic of taro leaf blight from 1993-1994 (Misra *et al.*, 2008). Taro blight epidemics have the potential to reduce food availability and posing a serious threat to the rural dwellers and regional food security (Abdulai *et al.*, 2020). *Phytophthora colocasiae* Raciborski is of prime importance because it can reduce corm yield by up to 50% and leaf yield by 95% in susceptible varieties. Corm rots usually develop after harvest and entire corms can decay in 7–10 days and causes heavy loss during storage (Ugwuja *et al.*, 2022).

## 2. MATERIALS AND METHODS

### 2.1 Collection of Disease Samples

Sixteen infected corm samples were collected from different markets in two districts (West Godavari and East Godavari) of Andhra Pradesh and pot experiment was carried out in the Department of Plant Pathology, SHUATS, Prayagraj during *Rabi* season (2022-23).

**Table 1. Collection of disease samples from markets**

S. No.	Name of the sample	Name of the market	Mandal	District	State
1	A1	Ganesh Chowk Rythu Bazar	Rajamahendravaram Rural Mandal	East Godavari	Andhra Pradesh
2	A2	Amalapuram Rythu Bazar	Amalapuram Mandal	East Godavari	Andhra Pradesh
3	A3	Gopalapuram Rythu Bazar	Gopalapuram Mandal	West Godavari	Andhra Pradesh
4	A4	Kovvuru Rythu Bazar	Kovvur Mandal	West Godavari	Andhra Pradesh



**Figure 1. Collected colocasia corms from different markets in Andhra Pradesh**

## **2.2 Isolation of the Pathogen**

The infected corm showing characteristic symptoms was cut with healthy portion into small pieces (2-5mm), firstly surface sterilized with sterile distilled water and then sterilized with sodium hypochlorite (0.1%) for 15-30 seconds and again sterilized with sterile distilled water to remove the disinfectant and blotted dry. The sterilized pieces were plated (4 pieces/dish) on carrot agar medium in Petri dishes under aseptic conditions. Incubated at 25 °C for five to ten days for obtaining sufficient quantity of inoculums. Pure cultures were obtained by sub culturing.



**Figure 2. Pure culture of *Phytophthora* sp.**

## **2.3 Inoculation of Pathogen**

The Koch's postulate was verified by inoculating the pathogen thoroughly mixed with the soil. In treated check three rhizomes were sown in each pot and it was inoculated with 10 days old culture of the fungal isolate. In control, three rhizomes were sown in uninoculated pots. The symptoms were observed after 30 days of inoculation in treated pots, whereas uninoculated pots remained symptom-free.

## **2.4 Symptoms after Inoculation of Pathogen**

Infection can occur on any part of the corm and develop rapidly after harvest. In the early stages of corm rot, the symptoms are subtle. When infected corm sliced, tan colored, rubber-like and soft appearance can be observed. Later an expanding, brown discolored area with a diffuse, indistinct border develops. Downy whitish growth on the surface of the leaflets and corms (Nelson *et al.*, 2011). After the

germination of corm the symptoms appeared on the leaf surface as small grey to brown discoloured water-soaked spots which later enlarged, became dark brown and coalesced, finally destroyed the entire leaf lamina(Nath *et al.*, 2015).



**Figure 3. A) Infected and B) healthy corms of Colocasia**



**Figure 4. Phytophthora blight symptoms on leaves of Colocasia (after corm germination)**



**(a)**



**(b)**

**Figure 5.(a and b) Colocasia plants in inoculated and uninoculated pots**

## 2.5 Pathogen Reisolation

Pathogen reisolation was done to fulfil the Koch's postulates. At the end of each test, corms were taken out from inoculated pots then washed with water. Corms were cut into small pieces and surface sterilized with sterile distilled water and with sodium hypochlorite then dried with sterile filter paper for reisolation. Sterilized pieces were plated on carrot agar poured petri plate and incubated for four to seven days at 25°C in the dark.

## 2.6 *In vitro* Management of *Phytophthora* sp.

The experiment was conducted as a completely randomized design with seven treatments and three replications. The treatments were evaluated at three different concentrations @ 5%, 10% and 15% concentration of leaf extracts. The average diameter of the mycelial growth inhibition in each treatment was measured for five days post incubation (before the plates were completely covered with mycelia of the fungus). The per cent growth inhibition of the fungus in each treatment in comparison with control was calculated by the following formula as given by **Bliss (1934)**.

$$PGI = \frac{C-T}{C} \times 100$$

Where,

PGI = Per cent growth inhibition

C = Colony diameter (mm) in control

T = Colony diameter (mm) in treatment

**Table 2. Detail of treatments**

Treatments	Treatment details	Concentration (%)	References
T <sub>0</sub>	Control	-	-
T <sub>1</sub>	Neem leaf extract	5, 10 and 15 %	<b>Haider et al. (2020)</b>
T <sub>2</sub>	Mint leaf extract	5, 10 and 15 %	<b>Mahaveeret al. (2022)</b>
T <sub>3</sub>	Lantana leaf extract	5, 10 and 15 %	<b>Choga et al. (2021)</b>
T <sub>4</sub>	Tulsi leaf extract	5, 10 and 15 %	<b>Mahaveeret al. (2022)</b>
T <sub>5</sub>	Periwinkle leaf extract	5, 10 and 15 %	<b>Shahet al. (2022)</b>
T <sub>6</sub>	Metalaxyl	0.025, 0.050 and 0.075 %	<b>Adomakoet al. (2017)</b>

## **2.7 Preparation of Leaf Extracts:**

Fresh and healthy leaves were collected. The plant parts were washed thrice thoroughly under running tap water and once with 70% ethanol for 1 minute. Then they are finally rinsed with sterile distilled water. Hundred grams of each plant part grinded by addition of 100ml of sterile distilled water with the help of mixer grinder. Then the mixture of each extract subjected/ passed through sterile double layered muslin cloth for twice and collected in conical flasks (**Chakrapani et al. 2020**).

## **2.8 In vitro evaluation of leaf extracts against the pathogen:**

The effect of selected botanicals against *Phytophthora* sp. were carried out by poisoned food technique, respectively.

### **2.8.1 Preparation of medium:**

Calculated concentration of each leaf extracts (5, 10 and 15 ml) was thoroughly mixed with sterile molten carrot agar medium (95, 90 and 85 ml) in 250 ml conical flasks and sterilized at 1.1 kg /cm<sup>2</sup> (121.6 °C) pressure for 20 minutes in an autoclave.

### **2.8.2 Poison food technique:**

Amended medium was poured into 90 mm sterile Petri plates and allowed to solidify. Mycelial disc of 5 mm from periphery of actively growing culture was cut out by sterile cork borer and one such disc was placed on the centre of each carrot agar poured plates. Three replications and seven treatments were maintained. Control was maintained by growing the pathogen without any treatments. The plates were incubated at 25 ± 2°C. The data was recorded at 24, 72 and 120 hours after inoculation till full growth in control plate. Per cent inhibition of mycelial growth was calculated by using the formula given by **Bliss (1934)**.

## **3. Results and Discussion**

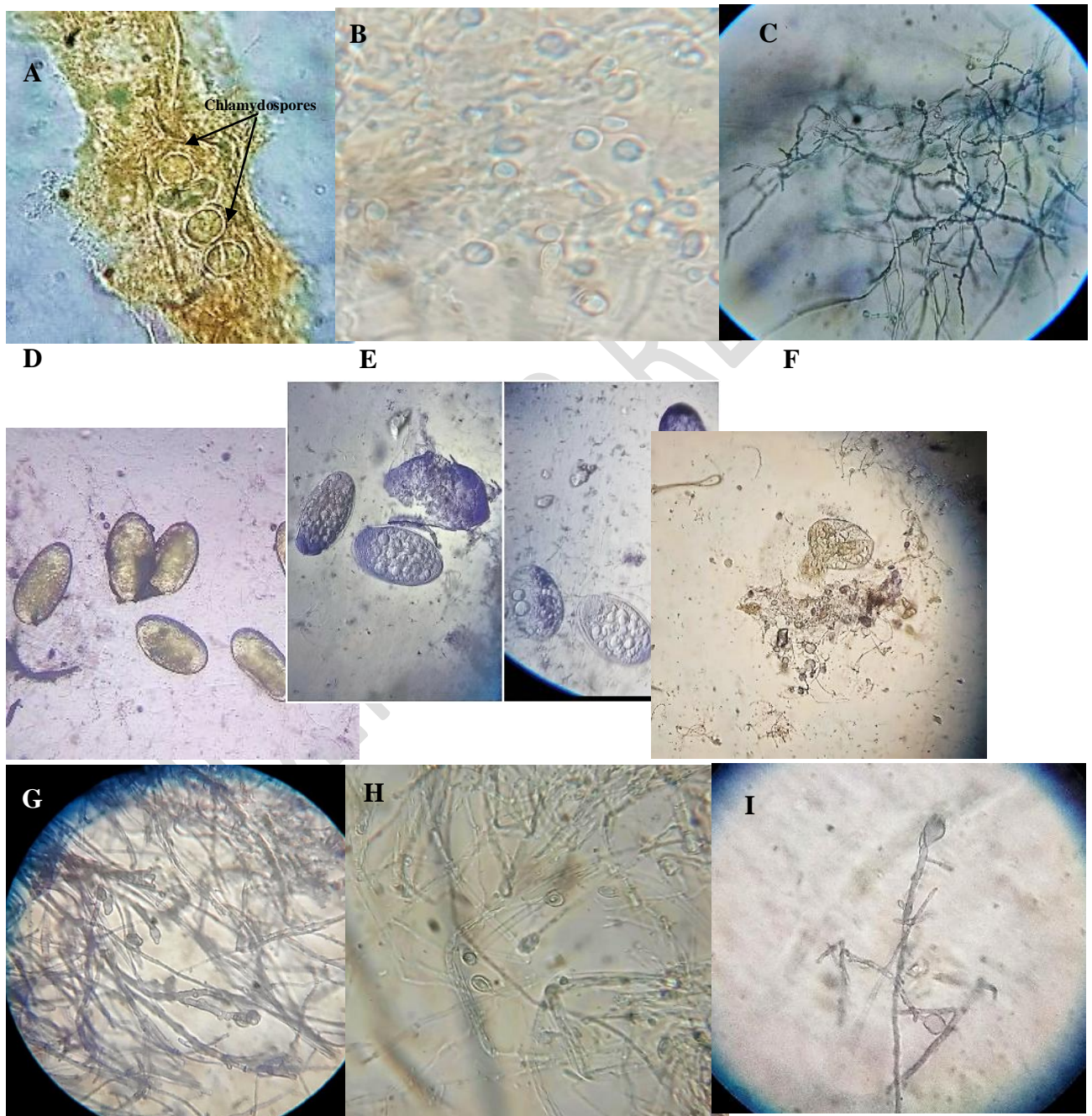
The pathogen causing disease on the colocasia plants and corms was identified as *Phytophthora* sp. on the basis of morphological and cultural characters.

### **3.1 Morphological characteristics of pathogen**

The mycelium was hyaline, coenocytic and inter or intra-cellular. The pathogen is a heterogeneous species that asexually produces sporangia, sporangiospores and zoospores. In contrast, as a result of sexual reproduction, it produces oospores (**Shah et al., 2022**). The sporangiophores are very slender and narrow at the tip. The shape of the sporangia varied from globose to ovoid, ellipsoid, elongated or pyriform (**Baysal-Gurel et al., 2022**). The oogonium is spherical and yellowish and the amphigynous

antheridium persists at the base of the oogonium for a considerable period after the oospores are formed (Misra *et al.*, 2008).

Flagellated zoospores are released from zoosporangia, which convert to cysts and germinate. The chlamydozoospores are globose or spherical in shape. The abundant production of zoosporangia, zoospores and cysts make *Phytophthora* sp. a devastating pathogen (Baysal-Gurel *et al.*, 2022).



**Figure 6.** Microscopic view of *Phytophthora* sp. (A) thick walled chlamydozoospores in rotted corn tissue, (B) chlamydozoospores of *Phytophthora* sp. (40X), (C) chlamydozoospores with hyphal swelling (10X), (D) sporangia of *Phytophthora* sp. (40X), (E) zoosporangia (40X), (F) ruptured

zoosporangia releasing zoospores (40X), (G) chlamydo-spore and sporangia with hyphal swelling, (H) internal nested sporangia (40X), (I) sporangium of *Phytophthora* sp. (40X)

**Table 3. Efficacy of selected leaf extracts on the per cent inhibition (%) of *Phytophthora* sp. at 120 hrs of incubation as affected by treatments**

Treatmen ts	Treatment details	Per cent inhibition (%)*		
		5%	10%	15%
T <sub>0</sub>	Control	00.00	00.00	00.00
T <sub>1</sub>	Neem leaf extract	33.27	37.59	42.55
T <sub>2</sub>	Mint leaf extract	30.60	32.87	39.77
T <sub>3</sub>	Lantana leaf extract	32.03	35.48	42.13
T <sub>4</sub>	Tulsi leaf extract	31.44	35.06	40.19
T <sub>5</sub>	Periwinkle leaf extract	27.49	30.69	34.22
T <sub>6</sub>	Metalaxyl (0.025, 0.050, 0.075%)	59.12	65.85	75.18
	F test	S	S	S

\*Mean of three replicates



(a)(b)

(c)

**Figure 7.**Radial growth of *Phytophthora* sp. at 120 hrs of incubation (a) at 5% concentration, (b) at 10% concentration, (c) at 15% concentration of leaf extracts

### 3.2 *In vitro* management of *Phytophthora* sp.

A total of 5 different botanicals were evaluated at various levels of concentrations by using poisoned food technique. Among all the 5 plant extracts evaluated under *in vitro* condition, two plant extracts showed the promising efficacy to suppress the test pathogen. Among these, neem leaf extract had shown 42.55% inhibition against the mycelial growth of fungus at all the three concentrations (5, 10 and 15 %) tested even after five days of incubation. While lantana leaf extract inhibited fungal growth at all three concentrations (5, 10 and 15%), as the days progressed the potentiality of lantana leaf extract also slightly reduced from 32.03% to 42.13%. The probable reasons for such findings may be because of phytoextracts of neem (*Azadirachta indica*) and lantana significantly inhibited the fungal

growth by disrupting the mitochondria, cell membrane and cell wall of pathogen. Secondary metabolites like azadirachtin, nimbin, polyphenols, terpenoids, saponins and flavonoids have potential to overcome fungal diseases without human health risks. Similar findings have been reported by Haider *et al.* (2020) and Choga *et al.* (2021).

#### 4. Conclusion

Sixteen infected corm samples were collected from two districts (West Godavari and East Godavari) of Andhra Pradesh. The samples collected from Kovvur Rythu Bazar, West Godavari district in Andhra Pradesh showed virulent when compared to other samples. The pathogenicity of *Phytophthora* sp. causing corm rot of colocasia was proved by Koch's postulate. Neem leaf extract @ 5, 10 and 15% conc. recorded minimum radial growth (mm) and maximum per cent inhibition (%) of *Phytophthora* sp. at 120 hrs of incubation as compared to other leaf extracts. The present study is limited to one trial in Prayagraj conditions, therefore to substantiate the present result more such trials are required in future for further recommendation.

#### References

1. **Abdulai, M., Norshie, P. M. and Santo, K. G. (2020).** Incidence and severity of taro (*Colocasia esculenta* L.) blight disease caused by *Phytophthora colocasiae* in the Bono region of Ghana. *SSRG International Journal of Agriculture and Environmental Science*. 7(2): 52-63.
2. **Adomako, J., Kwoseh, C. and Moses, E. (2017).** Metalaxyl sensitivity and aggressiveness of *Phytophthora colocasiae* isolates associated with taro leaf blight disease. *Journal of Plant Pathology*. 8(2): 205-210.
3. **Baysal-Gurel, F., Bika, R., Simmons, T. and Avin, F. (2022).** Identification and management of phytophthora aerial blight caused by *Phytophthora nicotianae* on *Catharanthus roseus*. *Plant Disease*. 106(4): 1271-1277.
4. **Bliss, C. I. (1934).** The method of probits. *Science*. 79(2037): 38-39.
5. **Chakrapani, K., Sinha, B., Chanu, W. T., Chakma, T. and Thangja, B. (2022).** Morphological and molecular variability studies of *Rhizoctonia solani* isolates of Manipur (India) inciting sheath blight in rice (*Oryza sativa*. L). *The Pharma Innovation Journal*. 11(3): 601-610.
6. **Choga, T., Ngadze, E., Rugare, J. T., Mabasa, S., Makaza, W., Gwatidzo, V. O. and Karubanga, G. (2021).** Effect of botanical extracts on late blight (*Phytophthora infestans*) and productivity of tomato (*Solanum esculentum*). *International Journal of Agronomy*. 3(2):1-19.
7. **Haider, E., Khan, M. A., Atiq, M., Shahbaz, M. and Yaseen, S. (2020).** Phytoextracts as management tool against fungal diseases of vegetables. *International Journal of Biosciences*. 16(3): 303-314.

8. **Koch, R. (1890).** An address on bacteriological research. *British Medical Journal*. 2(1546): 380.
9. **Mahaveer N. Shebannavar, Devappa V., Ramachandra R.K., Anjaneya Reddy B. and Sangeetha C.G. (2022).** Evaluation of different botanicals for the management of late blight (*Phytophthora infestans*) of potato in Karnataka. *Biological Forum- An International Journal*. 14(4): 1182-1187.
10. **Misra, R. S., Sharma, K. and Mishra, A. K. (2008).** Phytophthora leaf blight of Taro (*Colocasia esculenta*)-a review. *Asian Australia's Journal of Plant Science Biotechnology*. 2: 55-63.
11. **Mugao, L. G., Phyllis, W., Muturi, B. M., Gichimu, M. and Njoroge, E. K. (2020).** *In vitro* control of *Phytophthora infestans* and *Alternaria solani* using crude extracts and essential oils from selected plants. *International Journal of Agronomy*. 20: 1-10.
12. **Nath, V. S., Basheer, S., Jeeva, M. L., Hegde, V. M., Devi, A., Misra, R. S. and Raj, M. (2016).** A rapid and efficient method for *in vitro* screening of taro for leaf blight disease caused by *Phytophthora colocasiae* Racib. *Journal of Phytopathology*. 164(8): 520-527.
13. **Nelson, S., Brooks, F. and Teves, G. (2011).** Taro leaf blight in Hawaii. *Plant Disease*.
14. **Shah, H. M., Jaiman, R. K., Patel, J. R. and Jani, M. D. (2022).** *In vitro* management of colocasia (*Colocasia esculenta*) leaf blight caused by *Phytophthora colocasiae*. *The Pharma Innovation Journal*. 11(6): 724-734.
15. **Singh, D., Jackson, G., Hunter, D., Fullerton, R., Lebot, V., Taylor, M. and Tyson, J. (2012).** Taro leaf blight-a threat to food security. *Agriculture*. 2(3): 182-203.
16. **Ugwuja, F. N., Tاتفeng, M., Onifade, A. K., Akanwa, F. E., Ugwuoke, K. I. and Chiejina, N. V. (2022).** First report of *Phytophthora sansomeana* (EM Hansen) causing leaf blight of taro (*Colocasia esculenta* Schott) in South Eastern Nigeria. *International Journal of Pathogen Research*. 9(2): 20-30.