

## Original Research Article

### **Efficacy of various chemical spray on plant growth of chickpea (*Cicer arietinum* L.) in terminal heat stress conditions**

#### **ABSTRACT**

Heat stress is now widely accepted as an important ecological factor influencing growth of plants and production. Rising temperatures as a result of global warming cause heat stress, reducing plant development and potential output throughout the entire globe. Therefore, a field experiment was carried out at Student's Instructional Farm, Chandra Shekhar Azad University of Agriculture & Technology Kanpur, to minimize the heat stress induced losses in chickpea plants with the foliar spray of chemicals during two consecutive years 2021-22 and 2022-23 at Rabi season November-April. Experimental treatments comprising of two chickpea varieties (RVG-202 and RVG-203) were cultivated on same dates (15<sup>th</sup> November) of sowing and foliar spray of seven chemicals concentrations were applied as foliar spray treatments at vegetative, anthesis and both stage which were as Salicylic acid @ 800 ppm, Salicylic acid @ 400 ppm, Ascorbic acid @ 10 ppm, Potassium chloride @ 1%, thiourea @ 400 ppm, Cycocel @ 400 ppm and including Control (without spray). Results suggested that heat stress severely reduced the chickpea growth and productivity. However, foliar application of salicylic acid and thiourea positively affected the plant growth attributes which ultimately increased the final productivity. Concisely, the foliar spray of chemicals particularly salicylic acid and thiourea modulated the heat stress induced losses to chickpea cultivar RVG-202 and RVG-203 by improving their antioxidant defense mechanism and enhanced the productivity.

**Key word:** chickpea, plant growth, salicylic acid, thiourea, terminal heat stress

#### **INTRODUCTION**

Chickpea (*Cicer arietinum* L.) is an annual pulse of the legume family, grown from herbaceous, pod-producing plants, in areas with a semiarid or temperate climate (Knights & Hobson, 2016; Wallace *et al.*, 2016). The types of chickpeas that are produced nowadays are the only domesticated legumes of the *Cicer* genus and are thought to have been cultivated from the wild species, *Cicer reticulatum* (Ladizinsky & Adler, 1976; Sharma *et al.*, 2013). *Cicer arietinum* L. is the sole cultured species in the genus *Cicer* (43 species). It is a highly self-pollinated annual diploid ( $2n = 2x = 16$ ) crop with a genome size of ~931 Mbps and an outcrossing rate of less than 1% (Rasheed *et al.*, 2021). It is highly valued for its nutritional quality and health benefits and ability to improve soil fertility and sustainability of the cropping systems. Chickpea is an excellent source of protein, carbohydrate, dietary fibres, polyunsaturated fatty acids, minerals and vitamins (Jukanti, Gaur *et al.*, 2012). It is also considered as a high energy and protein feed in animal diets (Bampidis & Christodoulou, 2011).

Historically, Asia is a major producer of chickpeas, followed by Australia, Africa, America, and Europe. Globally, chickpea is grown in 150.04 lakh hectares area with a production of 158.71 lakh tonnes and productivity of 1057.8 kg/ha. India is the largest producer and consumer of pulses in the world. It has 36.8% of global area, 24.2% of global production and 27% of consumption (Anonymous, 2021). During 2021-22, India contributed 86% of total global chickpea production, with 137.50 lakh tonnes grown on 102.65 lakh hectares with a productivity of 1447 kg/hectare (agricoop.nic.in). In India, Uttar Pradesh holds the fourth position with share of 5.7% in chickpea production. Uttar Pradesh produces 7.83 lakh tonnes in area of 5.94 lakh hectares with 1243 kg/hectare productivity in 2021-22.

Chickpea (*Cicer arietinum* L.) is a cool and dry season food legume largely grown on residual soil moisture after the rainy season. The chickpea crop is largely grown under rainfed conditions without irrigations. Thus, soil moisture deficit towards end of the crop season (terminal drought) is the most important abiotic stress in about two-thirds of the global chickpea area (Gaur *et al.* 2012). The optimal temperatures for chickpea growth and reproductive phase range between 10°C and 30°C. High temperature during the reproductive stage causes a greater problem than at the seedling or vegetative phase. A few days of exposure to high temperatures ( $\geq 32^\circ\text{C}$ ) during reproductive phase can cause heavy yield losses. Chickpea suffers heavy yield losses when exposed to heat stress at reproductive (flowering and podding) stage (Gaur *et al.*, 2012; Gaur *et al.*, 2013 and Gaur *et al.* 2015).

Moisture stress at flowering and seed setting is most common and reported to reduce seed the yield significantly. Consequently, terminal drought stress, which occurs during the reproductive phase of the crop is common and critical (Anbessa and Bejiga, 2002). The frequency and severity of drought and heat stresses are further expected to increase due to increasing climatic variability and overall impacts of climate change. Varieties with enhanced tolerance to drought and heat stresses are needed for increasing and stabilizing chickpea production in the country. Salicylic acid is involved in water relations of plant cells in abiotic stress conditions and it is well known that SA diminishes the impairments arisen from water deficiency in plants (Hussain *et al.*, 2009). Salicylic acid (SA) plays a key role in regulation of plant growth, development, interactions with other organisms and responses to environmental stress (Miura and Tada, 2014). Ascorbic acid is found in the cytosol, chloroplasts, vacuoles and mitochondria of plant cells. It has a great effect on physiological processes such as cell division, plant growth and the biosynthesis of cell wall, metabolites and phytohormones. Moreover ascorbic acid plays a vital role in renovation of chloroplast and mitochondrion membranes (Barth *et al.*, 2004; Pavet *et al.*, 2005 and Barth *et al.*, 2006)

Foliar spray (Exogenous) application of thiourea has been found effective in stress alleviating molecules including thiols that are crucial for enhancing crop growth. Thiols are well known to maintain the redox state (-SH/-S-S-ratio) of the cell and its proper functioning under stress (Anjum *et al.*, 2011 and Perveen *et al.*, 2013). Improvement in plant growth and development under different stresses due to foliar spray of thiourea has been observed in maize (Sahu *et al.*, 1993), wheat (Sahu *et al.*, 2006), pearl millet (Parihar *et al.*, 1998) and cluster bean (Garg *et al.*, 2006).

#### MATERIAL AND METHODS

The experiments were carried out at Student's Instructional Farm and in the seed testing laboratory of Department of seed Science and Technology, Chandra Shekhar Azad University of Agriculture & Technology Kanpur, during *Rabi* 2021-22 (I<sup>st</sup> year) and 2022-23 (II<sup>nd</sup> year). The experiment conducted with split plot design to "Studies on influence of terminal heat stress on seed yield and seed quality in chickpea (*Cicer arietinum* L.)" consisted of two chickpea varieties namely RVG-202 (V<sub>1</sub>) and RVG-203 (V<sub>2</sub>). The experiment consisted of twenty two treatment combinations as mentioned below.

Main plot- Varieties (V<sub>1</sub>- RVG 202 and V<sub>2</sub> - RVG-203)

Sub plot- Chemicals spray treatments: T<sub>0</sub>-Control (Without spray), T<sub>1</sub>- Salicylic acid @ 800 ppm at Vegetative, T<sub>2</sub>- Salicylic acid @ 400 ppm at Vegetative, T<sub>3</sub>- Ascorbic acid @ 10 ppm at Vegetative, T<sub>4</sub>-KCl @ 1% at Vegetative, T<sub>5</sub>-Thiourea @ 400ppm at Vegetative, T<sub>6</sub>-KNO 3 @ 0.3% at Vegetative, T<sub>7</sub>-Cycocel @ 400 ppm at Vegetative, T<sub>8</sub>- Salicylic acid @ 800 ppm at Anthesis, T<sub>9</sub>- Salicylic acid @ 400 ppm on Anthesis, T<sub>10</sub>- Ascorbic acid @ 10 ppm on Anthesis, T<sub>11</sub>-KCl @ 1% at Anthesis, T<sub>12</sub>-Thiourea @ 400ppm on Anthesis, T<sub>13</sub>- KNO 3 @ 0.3% at Anthesis, T<sub>14</sub>-Cycocel @ 400 ppm at Anthesis, T<sub>15</sub>- Salicylic acid @ 800 ppm at Vegetative + Anthesis, T<sub>16</sub>- Salicylic acid @ 400 ppm on Vegetative + Anthesis, T<sub>17</sub>- Ascorbic acid @ 10 ppm at Vegetative + Anthesis, T<sub>18</sub>- KCl @ 1% at Vegetative + Anthesis, T<sub>19</sub>-Thiourea @ 400ppm at Vegetative + Anthesis, T<sub>20</sub>- KNO 3 @ 0.3% on Vegetative + Anthesis and T<sub>21</sub>-Cycocel @ 400 ppm at Vegetative + Anthesis.

The seeds were sown in three replications at spacing of 30 x 10 cm. Two foliar sprays at vegetative and reproductive stage after sowing were given as per the treatments of subplot. Chemical spraying was done in morning or evening when wind speed were calm, at the rate of 200 ltr./ha (200 ml. per plot in 10 m<sup>2</sup> area). For the preparation of solution 1mg/ltr chemical were used for 1PPM solution. The observations were recorded on ten randomly selected plants from each plot on plant height and number of branches plant<sup>-1</sup> at physiological maturity stage. The various statistical techniques were used for calculation of the data suggested by Cochran and Cox (1957).

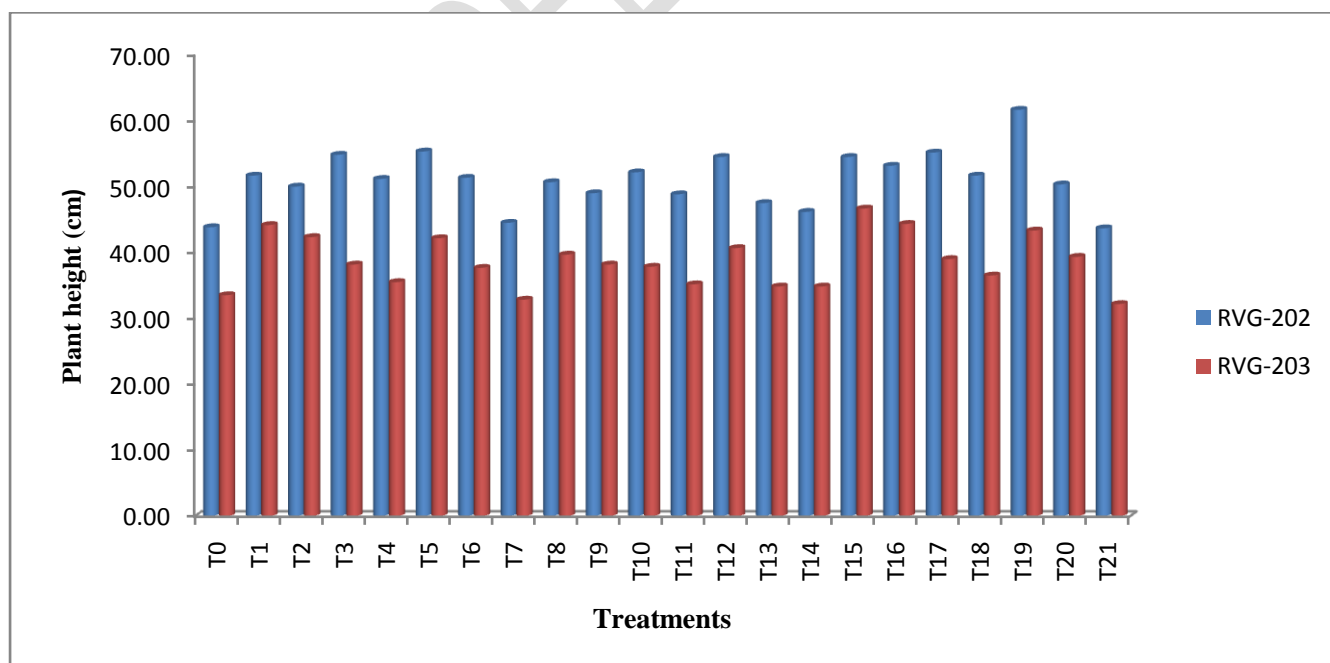
#### RESULTS AND DISCUSSION

The terminal heat stress and foliar spray of chemicals had a significant influence on the plant growth characters (Plant height and number of branches plant<sup>-1</sup>) and yield of chickpea. Plant height (cm) is an important determinant that decides the yield potential of any crop plant. The heat stress and foliar spray significantly influenced the plant height (cm) at physiological maturity stage in chickpea (Table-1).

**Table- 1 Effect of varieties and chemicals' spray on plant height (cm) in chickpea**

Treatments	I <sup>st</sup> year			II <sup>nd</sup> year			Pooled		
	V <sub>1</sub>	V <sub>2</sub>	Mean	V <sub>1</sub>	V <sub>2</sub>	Mean	V <sub>1</sub>	V <sub>2</sub>	Mean
T <sub>0</sub>	44.33	33.67	39.00	43.33	33.35	38.34	43.83	33.51	38.67
T <sub>1</sub>	52.00	44.00	48.00	51.33	44.33	47.83	51.67	44.17	47.92

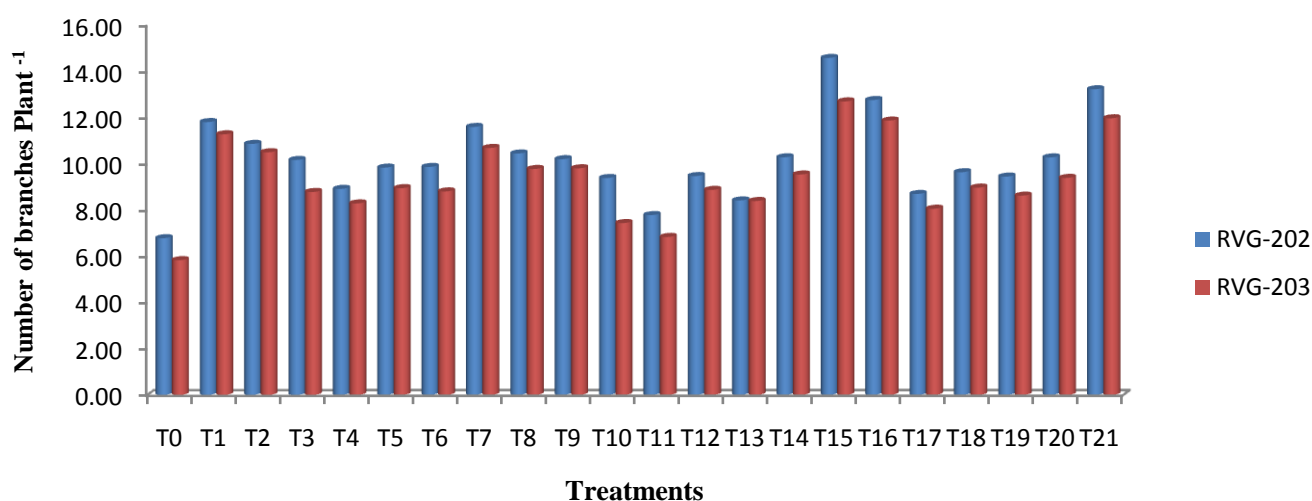
T <sub>2</sub>	51.00	42.00	46.50	49.00	42.67	45.83	50.00	42.33	46.17
T <sub>3</sub>	54.67	38.33	46.50	55.00	38.00	46.50	54.83	38.17	46.50
T <sub>4</sub>	51.00	35.67	43.33	51.33	35.33	43.33	51.17	35.50	43.33
T <sub>5</sub>	55.67	42.33	49.00	55.00	42.00	48.50	55.33	42.17	48.75
T <sub>6</sub>	51.00	38.00	44.50	51.67	37.33	44.50	51.33	37.67	44.50
T <sub>7</sub>	44.00	32.67	38.33	45.00	33.00	39.00	44.50	32.83	38.67
T <sub>8</sub>	51.00	38.33	44.67	50.33	41.00	45.67	50.67	39.67	45.17
T <sub>9</sub>	49.67	36.67	43.17	48.33	39.67	44.00	49.00	38.17	43.58
T <sub>10</sub>	52.00	37.67	44.83	52.33	38.00	45.17	52.17	37.83	45.00
T <sub>11</sub>	49.00	35.00	42.00	48.67	35.33	42.00	48.83	35.17	42.00
T <sub>12</sub>	54.33	41.00	47.67	54.67	40.33	47.50	54.50	40.67	47.58
T <sub>13</sub>	47.33	34.67	41.00	47.67	35.00	41.33	47.50	34.83	41.17
T <sub>14</sub>	45.33	35.00	40.17	47.00	34.67	40.83	46.17	34.83	40.50
T <sub>15</sub>	54.67	47.00	50.83	54.33	46.33	50.33	54.50	46.67	50.58
T <sub>16</sub>	53.33	44.67	49.00	53.00	44.00	48.50	53.17	44.33	48.75
T <sub>17</sub>	55.67	39.33	47.50	54.67	38.67	46.67	55.17	39.00	47.08
T <sub>18</sub>	51.33	36.67	44.00	52.00	36.33	44.17	51.67	36.50	44.08
T <sub>19</sub>	62.00	43.67	52.83	61.33	43.00	52.17	61.67	43.33	52.50
T <sub>20</sub>	50.67	39.67	45.17	50.00	39.00	44.50	50.33	39.33	44.83
T <sub>21</sub>	43.33	32.00	37.67	44.00	32.34	38.17	43.67	32.17	37.92
Mean	<b>51.06</b>	<b>38.55</b>		<b>50.91</b>	<b>38.62</b>		<b>50.98</b>	<b>38.58</b>	
Factors	SE(d)	C.D.at 5%	SE(d)	C.D.at 5%	SE(d)	C.D.at 5%	SE(d)	C.D.at 5%	
V	0.63	2.71	0.55	2.67	0.59	2.69			
T	1.09	2.16	0.98	1.96	1.03	2.05			
VxT	1.54	3.05	1.38	2.74	1.46	2.90			
CV (%)		4.19		3.77		3.98			



**Fig.1 Effect of varieties and chemicals' spray on plant height (cm) in chickpea**  
**Table- 2 Effect of varieties and chemicals' spray on branches plant<sup>-1</sup> in chickpea**

Treatments	I <sup>st</sup> year			II <sup>nd</sup> year			Pooled		
	V <sub>1</sub>	V <sub>2</sub>	Mean	V <sub>1</sub>	V <sub>2</sub>	Mean	V <sub>1</sub>	V <sub>2</sub>	Mean

T <sub>0</sub>	6.89	5.83	6.36	6.67	5.83	6.25	6.78	5.83	6.31
T <sub>1</sub>	11.78	11.22	11.50	11.83	11.33	11.58	11.81	11.28	11.54
T <sub>2</sub>	10.89	10.50	10.70	10.83	10.50	10.67	10.86	10.50	10.68
T <sub>3</sub>	10.00	8.78	9.39	10.33	8.78	9.56	10.17	8.78	9.47
T <sub>4</sub>	8.83	8.07	8.45	9.00	8.50	8.75	8.92	8.29	8.60
T <sub>5</sub>	9.67	8.78	9.23	10.00	9.11	9.56	9.84	8.95	9.39
T <sub>6</sub>	9.40	8.44	8.92	10.33	9.17	9.75	9.87	8.81	9.34
T <sub>7</sub>	11.52	10.70	11.11	11.67	10.67	11.17	11.60	10.69	11.14
T <sub>8</sub>	10.89	10.11	10.50	10.00	9.44	9.72	10.45	9.78	10.11
T <sub>9</sub>	10.73	9.78	10.26	9.67	9.83	9.75	10.20	9.81	10.00
T <sub>10</sub>	9.44	7.50	8.47	9.33	7.37	8.35	9.39	7.44	8.41
T <sub>11</sub>	7.67	6.89	7.28	7.89	6.78	7.34	7.78	6.84	7.31
T <sub>12</sub>	8.72	8.50	8.61	10.22	9.24	9.73	9.47	8.87	9.17
T <sub>13</sub>	8.50	7.78	8.14	8.33	9.00	8.67	8.42	8.39	8.40
T <sub>14</sub>	10.56	9.57	10.07	10.00	9.50	9.75	10.28	9.54	9.91
T <sub>15</sub>	14.83	12.83	13.83	14.33	12.57	13.45	14.58	12.70	13.64
T <sub>16</sub>	12.85	11.74	12.30	12.67	12.00	12.34	12.76	11.87	12.32
T <sub>17</sub>	8.72	7.78	8.25	8.67	8.33	8.50	8.70	8.06	8.38
T <sub>18</sub>	9.94	9.11	9.53	9.33	8.83	9.08	9.64	8.97	9.30
T <sub>19</sub>	9.67	8.57	9.12	9.22	8.67	8.95	9.45	8.62	9.03
T <sub>20</sub>	10.44	9.28	9.86	10.11	9.50	9.81	10.28	9.40	9.83
T <sub>21</sub>	13.67	12.50	13.09	12.78	11.44	12.11	13.23	11.97	12.60
Mean	<b>10.26</b>	<b>9.28</b>		<b>10.15</b>	<b>9.38</b>		<b>10.21</b>	<b>9.33</b>	
Factors	SE(d)	C.D.at 5%	SE(d)	C.D.at 5%	SE(d)	C.D.at 5%	SE(d)	C.D.at 5%	
V	0.30	0.68	0.15	0.71	0.23	0.70			
T	0.17	0.34	0.27	0.54	0.22	0.44			
VxT	0.24	0.87	0.39	0.91	0.31	0.89			
CV (%)		9.30		8.87		9.08			



**Fig.2 Effect of varieties and chemicals' spray on number of branches plant<sup>-1</sup> in chickpea**

From the perusal of data (Table-1), it is clear that significant differences were observed between the two varieties in terms of plant height at physiological maturity. The variety RVG-202 (V<sub>1</sub>) attained more plant height (50.98 cm) as compared to the variety RVG-203 (V<sub>2</sub>) which exhibited 38.58 cm plant height at physiological maturity. From the analysis it is also perceptible that V<sub>1</sub> scored 32.14% more plant height as compared to V<sub>2</sub>.

The overall mean data presented in Table-1 reveal that plant height varied significantly in all the applied treatments. Among the different treatments, T<sub>19</sub> (Thiourea spray at vegetative + anthesis stage @ 400 ppm) documented maximum plant height (52.50 cm) followed by T<sub>15</sub> (Salicylic acid spray at vegetative + anthesis stage @ 800 ppm). Also among all the treatments T<sub>21</sub> (Cycocel spray at vegetative + anthesis stage @ 400 ppm) exhibited the shortest plant height at 37.92 cm.

The interaction of variety × treatment (V×T) had significant effect on plant height. The least plant height (32.17 cm Fig.1) was observed in the treatment combination of V<sub>2</sub>×T<sub>21</sub> which did not statistically differ from the interaction of V<sub>2</sub>×T<sub>0</sub>, V<sub>2</sub>×T<sub>7</sub>, V<sub>2</sub>×T<sub>13</sub> & V<sub>2</sub>×T<sub>14</sub> (Table 1). The interaction V<sub>1</sub>×T<sub>19</sub> exhibited the highest plant height (61.67 cm Fig 1) which showed significant difference from rest of the treatment combination (Table 1).

The data recorded on number of branches plant<sup>-1</sup> at physiological maturity are given in Table 2 and depicted graphically in Figure 2, clearly indicates that the varieties and treatments both significant effect on number of branches plant<sup>-1</sup> in chickpea. From the perusal of data (Table 2), it is clear that significant differences were observed between the two varieties in terms of number of branches plant<sup>-1</sup> at physiological maturity. The variety RVG-202 (V<sub>1</sub>) attained more number of branches plant<sup>-1</sup>(10.21) as compared to the variety RVG-203 (V<sub>2</sub>) which exhibited 9.33 number of branches plant<sup>-1</sup> at physiological maturity. From the analysis it is also perceptible that V<sub>1</sub> scored 8.61 % more plant height as compared to V<sub>2</sub>.

The overall mean data presented in Table 2 reveal that number of branches plant<sup>-1</sup> varied significantly in all the applied treatments. Among the different treatments, T<sub>15</sub> (Salicylic acid spray at vegetative + anthesis stage @ 800 ppm) documented maximum number of branches plant<sup>-1</sup>(13.64) followed by T<sub>16</sub> (Salicylic acid spray at vegetative + anthesis stage @ 400 ppm) while the minimum number of branches plant<sup>-1</sup> (6.31) was recorded in T<sub>0</sub> (Control) (Fig 2).

The interaction of variety × Treatment (V×T) had significant effect on number of branches plant<sup>-1</sup>. The least number of branches plant<sup>-1</sup> (5.83, Fig. 2) was observed in the treatment combination of V<sub>2</sub>×T<sub>0</sub> which showed significant difference from rest of the treatment combination. The interaction of V<sub>1</sub>×T<sub>15</sub> exhibited the highest number of branches plant<sup>-1</sup> (14.58 Fig. 2) which showed significant difference from rest of the treatment combination.

Similar results were reported by He et al., 2005; Khan et al., 2014; Sahu *et al.*, 1993; Sahu *et al.*, 2006; Parihar *et al.*, 1998 and Garg *et al.*, 2006. Accordingly, it was found that the application of thiourea and salicylic acid in the form of foliar spray regulates the plant growth. Salicylic acid regulates the stomatal openings, ions and nitrogen uptakes. It regulates the enzymes activities which lead to an enhanced plant growth. Two foliar spray of thiourea under moisture stress during flowering and seed setting recorded significantly higher plant height reported by Doddagoudar *et al.*, 2021; Jat *et al.* 2014 and Ahmed *et al.* 2021.

## CONCLUSION

Based on present study, it was concluded that the thiourea spray at vegetative + anthesis stage @ 400 ppm and Salicylic acid spray at vegetative + anthesis stage @ 800 ppm both chemicals has been significant influence on chickpea plant growth under heat stress condition. Thiourea and Salicylic acid sprays at vegetative and one at reproductive stage resulted in good plant growth (plant height and number of branches plant<sup>-1</sup>) of chickpea and it was most remunerative as compared with the other treatments and control. This could have the utility against different stresses and offered as a solution to the problem faced with terminal heat stress.

## REFERENCES

- Ahmed, N., Rahman, K., Rahman, M., Sathi, K. S., Alam, M. M., Nahar, K. & Hasanuzzaman, M. (2021). Insight into the thiourea-induced drought tolerance in two chickpea varieties: Regulation of osmoprotection, reactive oxygen species metabolism and glyoxalase system. *Plant Physiology and Biochemistry*, 167, 449-458.
- Anbessa, Y. and Bejiga, G. (2002). Evaluation of ethiopian chickpea landraces for tolerance to drought. *Genetic Resources Crop Evolution*. 49: 557-564.
- Anjum, F. (2008). Use of thiourea for improving (*Triticum aestivum* L.) under contrasting environmental conditions Ph. D. Thesis, Botany Department, Univ. Agric. Faisalabad, Pakistan.
- Anjum, F., A. Wahid, M. Farooq and F. Javed (2011) Potential of foliar applied thiourea in improving salt and high temperature tolerance of bread wheat (*Triticum aestivum*). *Int. J. Agric. Biol.*, 13: 251–256.
- Anonymous (2021) Acharya N.G. Ranga Agricultural University Crop Outlook Reports (2022)
- Barth, C., De Tullio, M. and Conklin, P.L., (2006). The role of ascorbic acid in the control of flowering time and the onset of senescence. *J. Exp. Bot.* 57, 1657-1665.

- Barth, C., Moeder, W., Klessig, D.F. and Conklin, P.L., (2004). The timing of senescence and response to pathogens is altered in the ascorbate-deficient Arabidopsis mutant vitamin C-1. *Plant Physiol.* 134, 1784-1792.
- Doddagoudar, S. R., Shakuntala, N. M., & Meena, M. K. (2021). Mitigation of moisture stress through foliar spray of thiourea, salicylic acid and homobrassinolide in chickpea (*Cicer arietinum* L.). *Legume Research-An International Journal*, 44(9), 1032-1037.
- Garg, B. K., Barman, U. and Kathju, S. (2006). Influence of thiourea on photosynthesis, nitrogen metabolism and yield of clusterbean (*Cyamopsis tetragonoloba* L.) under rainfed condition of Indian arid zone. *Plant Growth Regulation*. 48: 237-245.
- Gaur, P. M., Samineni, S., & Varshney, R. K. (2014). Drought and heat tolerance in chickpea. *Legume Perspectives*, 3, 15–17.
- Gaur, P. M., Samineni, S., Krishnamurthy, L., Kumar, S., Ghanem, M. E., Beebe, S., Varshney, R. K. (2015). High temperature tolerance in grain legumes. *Legume Perspectives* (7) 23–24.
- Gaur, P. M., Samineni, S., Thudi, M., Tripathi, S., Sajja, S. B., Jayalakshmi, V., & Dixit, G. P. (2019). Integrated breeding approaches for improving drought and heat adaptation in chickpea (*Cicer arietinum* L.). *Plant Breeding*, 138(4), 389-400.
- Gaur, P. M., Thudi, M., Nayak, S., Samineni, S., Krishnamurthy, L., Gan-garao, N. V. P. R., Varshney, R. K. (2013). Progress in marker-assisted breeding for drought tolerance in chickpea. *Plant and Animal Genome Conference*, Abstract No. W339. 11-16 January, 2013. San Diego, CA, USA.
- Grasso, N., Lynch, N. L., Arendt, E. K., & O' Mahony, J. A. (2022). Chickpea protein ingredients: A review of composition, functionality, and applications. *Comprehensive reviews in food science and food safety*, 21(1), 435-452.
- He Y, Liu Y, Cao W, Huai M, Xu B, Huang B., 2005. Effects of salicylic acid on heat tolerance associated with antioxidant metabolism in Kentucky Bluegrass. *Crop Sciences*, 45(3): 988-995.  
<https://agricoop.gov.in/>
- Hussain, M., Malik, M.A., Farooq, M., Khan, M.B., Akram, M. and Saleem, M.F. (2009). Exogenous glycinebetaine and salicylic acid application improves water relations, allometry and quality of hybrid sunflower under water deficit conditions. *J. Agron. Crop Sci.* 195, 98- 109.
- Jat, B. L., Gupta, J. K., Meena, R. L., Sharma, R. N., & Bhati, D. S. (2014). Effect of foliar application of zinc sulphate and thiourea on productivity and economics of chickpea (*Cicer aritenum*). *Journal of Progressive Agriculture*, 5(2), 62-65.
- Khan MIR, Asgher M, Khan NA., 2014. Alleviation of salt-induced photosynthesis and growth inhibition by salicylic acid involves glycinebetaine and ethylene in mungbean (*Vigna radiata* L.). *Plant Physiology and Biochemistry*, 80: 67-74.
- Knights, E. J. & Hobson, K. B. (2016). Chickpea: Overview. In (C. Wrigley, H. Corke, K. Seetharaman, & J. Faubion Eds.), *Encyclopedia of food grains: Second edition* (Vol., 1-4, pp. 316-323). Elsevier Ltd.
- Miura, K. and Tada, Y. (2014). Regulation of water, salinity and cold stress responses by salicylic acid. *Front Pl. Sci.* 5: 4-10.
- Parihar, G.N., M.P. Sahu and N.L. Joshi, 1998. Nitrogen, sulphur and thiourea nutrition of pearl millet [*Pennisetum glaucum* (L) R. Br.] - II. Effect on yield and yield components. *Ann. Arid Zone*, 37: 59–67
- Pavet, V., Olmos, E., Kiddle, G., Mowla, S., Kumar, S., Antoniw, J., Alvarez, M.E., Foyer, C.H. (2005). Ascorbic acid deficiency activates cell death and disease resistance response in Arabidopsis. *Plant Physiol.* 139, 1291-1303.
- Perveen A., A. Wahid, S. Mahmood, I. Hussain and R. Rasheed (2015) Possible mechanism of root-applied thiourea in improving growth, gas exchange and photosynthetic pigments in cadmium stressed maize (*Zea mays*). *Braz. J. Bot.*, 38: 71–79
- Perveen, A., Wahid, A., Hussain, I., Rasheed, R. and Mahmood, S. (2013). Growth bioregulatory role of root-applied thiourea: changes in growth, toxicity symptoms and photosynthetic pigments of maize. *Pakistan J. Agric. Sci.* 50: 455-462.
- Rasheed, A.; Gill, R.A.; Hassan, M.U.; Mahmood, A.; Qari, S.; Zaman, Q.U.; Ilyas, M.; Aamer, M.; Batool, M. and Li, H. A. (2021) critical review: Recent advancements in the use of CRISPR/Cas9 technology to enhance crops and alleviate global food crises. *Curr. Issues Mol. Biol.* 43, 1950–1976.
- Sahu, M. P., Kumawat, S. M., Ramaswamy, N. K. and D'souza, S. F. (2006). Sulphydril bioregulator technology for increasing wheat productivity. *Res. Bulletin*. 1: 1-56.
- Sahu, M. P., Solanki, N. S. and Dashora, L. N., (1993). Effect of thiourea, thiamin and ascorbic acid on growth and yield of maize (*Zea mays* L.). *J. Agron. Crop Sci.* 171: 65-69.
- Sharma, S., Upadhyaya, H. D., Roorkiwal, M., Varshney, R. K., & Gowda, C. L. L., & (2013). Chickpea. In (M. Singh, H. D. Upadhyaya, & I. S. Bisht Eds.), *Genetic and genomic resources of grain legume improvement* (pp. 81-111).
- Wallace, T., Murray, R., & Zelman, K. (2016). The nutritional value and health benefits of chickpeas and hummus. *Nutrients*, 8(12), 766.