

# Original Research Article

## Phytochemical, Antibacterial, Antioxidant, and Toxicity Analysis of Chloroform Extract of *Aegle marmelos* (L.) Correa Leaf

### ABSTRACT

Phytochemicals are responsible constituents for the therapeutic potential in medicinal plants. In this study, *Aegle marmelos* leaf powder was extracted with methanol using the cold percolation technique. The resulting crude methanol extract was suspended in 1% HCl and neutralized with NH<sub>4</sub>OH, and the obtained solution was extracted with hexane and chloroform solvents accordingly. Analysis of the leaf chloroform extract through phytochemical screening confirmed the presence of alkaloid, glycoside, phenolics, flavonoid, and protein. The GC-MS analysis of the crude chloroform extract revealed nine primary compounds, with the most prevalent constituents being Limonene dioxide, which comprised 27.78%, and GermacreneB, 20.65%. The total phenolic and flavonoid content in the chloroform extract was found to be 58.36 mg GAE/g and 142.29 mg QC/g of dry extract, respectively. Chloroform extract showed antibacterial activity against *Bacillus subtilis* of an inhibition zone of 7 mm. The IC<sub>50</sub> value of the chloroform extract against DPPH radical was found to be 308.21 µg/mL. The extract demonstrated cytotoxicity against brine shrimp, with LC<sub>50</sub> of 157.49 µg/mL. Further *in vitro* and *in vivo* experimentation on this plant would enhance the potential therapeutic significance evaluation of the plant.

*Keywords: Aegle marmelos, extraction, phytochemicals, antioxidant, toxicity*

### 1. INTRODUCTION

*Aegle marmelos* (L.) Correa (*A. marmelos*) (Rutaceae family), also known as Bael, is a medium-sized, slender, aromatic tree, typically reaching a height of 6.0-7.5 meters with a girth ranging from 90 to 120 centimetres [1]. It is distributed worldwide geographically, including in Nepal, Sri Lanka, Myanmar, Pakistan, Bangladesh, India, and China. The fruit, stems, bark, and leaves are among the highest accumulator components containing bioactive compounds synthesized as secondary metabolites and reported various therapeutic qualities. *A. marmelos* has numerous ethnomedicinal uses in conventional and folk medicine [3]. The fruit and leaf of the plant have several healing characteristics that can be used in the treatment of ailments such as diabetes, dysentery, jaundice, gastralgia, diarrhoea, gastric problems, constipation, inflammation, febrile delirium, acute bronchitis, snakebite and laxative [4,5]. Through transgenic and metabolic engineering methods, information on the biosynthetic pathways and encoding enzymes present in the leaves of *A. marmelos* would be beneficial for

functional genomics. *A. marmelos* leaf is also employed for the environmentally friendly creation of gold and silver nanoparticles [6]. Bioactive compounds found in plants, such as alkaloids, coumarins, carotenoids, phenolics, flavonoids, terpenoids, and other antioxidants, are likely to protect against chronic diseases. In traditional medicine, Bael pulp was used as an energy drink with milk, which is a rich source of glucose, sugar, fiber, fat, minerals potassium, calcium, phosphate, iron, thiamine, vitamin B1, ascorbic acid, nicotinic acid, riboflavin, are other nutrients found in Bael [9].

In this study, the phytoconstituents and their potential bioactivity of the leaf extract of *A. marmelos* were evaluated.



**Fig. 1. Leaves and flower of *A. marmelos***

## 2. methodology

### 2.1. Collection of the Plant Sample

*A. marmelos* leaves were collected from Dhading, Nepal, at about 1200 m altitude. The identification of the plant was conducted with the help of the Department of Botany at Amrit Science Campus, Kathmandu. The leaves were cleaned, shade-dried, and ground into powder.

### 2.2. Preparation of Extract

The dried and powdered leaves of *A. marmelos* were subjected to a cold percolation for 30 days using methanol as the solvent. A rotary evaporator was used to concentrate the resulting extract. The resulting crude methanol extract was suspended with 1% HCl in distilled water and neutralized with  $\text{NH}_4\text{OH}$  solution. Then, the resulting solution was washed with hexane using a separating funnel with continuous shaking and release of air. The separating funnel was allowed to stand for some time, and the heavy aqueous layer at the bottom was collected. The light layer of hexane fraction at the top was collected separately. The aqueous layer was further processed for the extraction of chloroform fraction in the separating funnel again with continuous shaking and air release. This time, the heavy chloroform fraction at the bottom of the separating funnel was collected first and then concentrated in the rotary evaporator to receive crude chloroform extract. And the aqueous layer at the top was discarded. The obtained

chloroform extract was subjected to different phytochemical and biological tests.

### 2.3. Phytochemical Test

Methanol, hexane, and chloroform extract fractions were subjected to phytochemical screening. Several tests were carried out using standard methods [10].

### 2.4. Gas Chromatography-Mass Spectrometry (GC-MS)

Gas Chromatography-Mass Spectrometry (GC-MS) analysis of the chloroform fraction was facilitated by the Department of Food Technology and Quality Control in Kathmandu, Nepal. It was carried out following the protocol mentioned by Shrestha et. al. (2024) [11].

### 2.5. Total Phenolic Content (TPC)

The total phenolic content was evaluated by using the Folin-Ciocalteu reagent method [12]. Briefly, 1 mg/mL stock solution of gallic acid was diluted to various concentrations (100 to 10 µg/mL). 1 mL of Folin-Ciocalteu phenol reagent and 0.8 mL of aqueous 1 M Na<sub>2</sub>CO<sub>3</sub> solution were mixed with 0.1 mL of various concentrations of gallic acid. The reaction mixture was kept in the dark for approximately 15 minutes, after which the absorbance was measured at 765 nm using methanol as the blank. The same process was repeated for the plant extract.

Relation (1) was used to calculate the TPC in the sample as milligrams of gallic acid equivalent,

$$\text{TPC} = \dots\dots\dots(1)$$

Where, c = concentration of Gallic acid from calibration curve (mg/mL)  
V= volume of extract (mL)  
m= weight of extract (mg)

### 2.6. Total Flavonoid Content (TFC)

The amount of the total flavonoids in the plant extract was estimated by the aluminum chloride colorimetric method [13]. 1 mL of the sample (0.1 mg/mL in methanol) was combined with 1 mL of AlCl<sub>3</sub> (dissolved in methanol) and allowed to react for 1 hour. The absorbance was measured at 415 nm using methanol as the blank. Quercetin was used as standard. The total flavonoid content is expressed as milligrams of quercetin equivalents per gram of dried sample. The amount of total flavonoid content in the sample was calculated as milligrams of quercetin equivalent using relation 2.

$$\text{TFC} = \dots\dots\dots(2)$$

Where, c= concentration of quercetin from curve (mg/mL)  
V= volume of extract (mL)  
m= weight of plant extract (mg)

### 2.7. Antibacterial Activity

The antibacterial potential of chloroform extracts was performed by the agar well diffusion method [14]. The wells were created in the incubated media plates using a sterile cork borer (4 mm) and labeled suitably. The plant extract (15  $\mu$ L of 25 mg/mL) as a working solution was then added to each well using a micropipette. The solvent, methanol was taken as a negative control. The plates were incubated at 37°C for 6 hours. Following incubation, the plates were inspected for the presence of a zone of inhibition around the well, characterized by a clear area devoid of microbial growth. To ascertain the antibacterial effectiveness, the ZOI was measured using a ruler, and the mean value was noted. The microbial species *Staphylococcus aureus*, *Bacillus subtilis*, *Micrococcus leutus*, *Pseudomonas aeruginosa*, *Enterobacter cloaceae subsp. Disolvens*, and *Klebsiella pneumonia* were taken to evaluate antibacterial potential of the extract.

## 2.8. DPPH Scavenging Assay

The antioxidant activity of the extract was evaluated using 2,2-diphenyl-1-picryl hydrazyl (DPPH) free radical scavenging. The methodology was used according to the previous research of Poudel et al. [15]. Briefly, the initial stock solution of 1 mg/mL of extract was diluted by a two-fold dilution process in several concentrations. 500  $\mu$ L of each of the solutions was combined with 1500  $\mu$ L of 0.1 mM DPPH solution and incubated for 30 minutes in the dark. Their absorbance was measured against a blank at 517 nm after 30 minutes. A mixture of methanol and DPPH was taken as the blank, and standard ascorbic acid was taken as a positive control. Relation 3 was used to calculate % radical scavenging.

$$\% \text{ DPPH scavenging} = \times 100\% \dots \dots \dots (3)$$

The IC<sub>50</sub> (50% Inhibitory concentration) values of the extract were calculated using the logarithm range by plotting the extract concentration vs. the associated scavenging action in Office Excel.

## 2.9. Brine Shrimp Lethality Assay

The brine shrimp lethality bioassay was carried out to investigate the cytotoxicity of plant extracts [16]. The chloroform extract was subjected to brine shrimp nauplii at varying concentrations (500 to 15.625  $\mu$ g/mL) for 24 hours. The effectiveness of the chloroform extracts was assessed by quantifying the number of motile nauplii using logarithmic regression analysis of the percent mortality plotted against the corresponding concentration. This method determined the concentration of the chemical that resulted in mortality for 50% of the test subjects after a specific exposure duration. Relation 4 was used to calculate the percentage mortality of the nauplii.

$$\% \text{ Mortality} = \times 100\% \dots \dots \dots (4)$$

## 3. results and discussion

### 3.1. Phytochemical Screening

The chloroform extract fraction of *A. marmelos* was found to contain alkaloids, phenols,

saponins, flavonoids, tannins, cardiac glycosides, carbohydrates, and proteins, as per the qualitative phytochemical analysis. The results of the phytochemical screening of the extract are shown in Table 1 in detail.

**Table 1. Phytochemical screening of chloroform extract**

Phytochemical constituents	Extract	Test
	Chloroform	
Alkaloids	+	Mayer's Test Dragendorff's Test Wagner's test
Flavonoids	+	Lead acetate test Shinoda test
Phenols	+	Ferric chloride test
Glycosides	+	Molisch's test Fehling's test
Tannins	+	Gelatin test
Quinones	-	Sodium hydroxide and H <sub>2</sub> SO <sub>4</sub>
Saponins	+	Froth test
Protein	+	Xanthoproteic test
Carbohydrates	-	Molisch's test Benedicts test

'+' indicates presence, and '-' indicates the absence

### 3.2. Quantification of Phenolic and Flavonoid Content

The Total Phenolic Content (TPC) was quantified in milligrams of Gallic acid equivalent, employing the calibration curve of Gallic acid. The TPC was tested as gallic acid equivalent ( $y = 0.0083x - 0.0014$ ,  $R^2 = 0.996$ ) with reference to a standard curve (Figure 2(A)). The phenolic content in the chloroform extract was found to be 58.36 mg GAE /g of dry extract.

Likewise, the total content of flavonoid was demonstrated by relation to a standard curve ( $y = 0.0253x - 0.071$ ,  $R^2 = 0.9982$ ) (Figure 2(B)). *A. marmelos* leaf extract was found to have 142.29 mg QC/g of TFC in the leaf extract. Table 2 presents the detailed observations during the calculation of the phytochemicals found in chloroform extract.

Phenolic compounds are organic substances produced as byproducts in plant metabolic pathways such as pentose phosphate, shikimate, and phenylpropanoid [17]. Phenolic substances exhibit a broad range of physiological properties, including anti-

allergic, anti-inflammatory, antimicrobial, antioxidant, cardioprotective, antimutagenic, anticarcinogenic, and gene expression modifying capabilities. The health advantages associated with consuming abundant fruits and vegetables have been linked to the presence of phenolic compounds [18]. These compounds provide protection against ultraviolet radiation, bacteria, and pathogens in plants. The most significant health benefits of flavonoids are their antioxidant properties, ability to treat diabetes, chelating capabilities, and reduction in the incidence of heart disease [19]. Flavonoids demonstrate pharmacological effects such as inhibiting histamine release, preventing blood platelet adhesion, and reducing the action of lens aldose reductase. They also can counteract the inflammatory effects of hepatotoxins and act as heart stimulants. [20,21]. In this plant, flavonoid content in the leaf was found to be higher than the phenolic content which would help to reduce potential reactive oxygen species and enhance the therapeutic value of this plant.

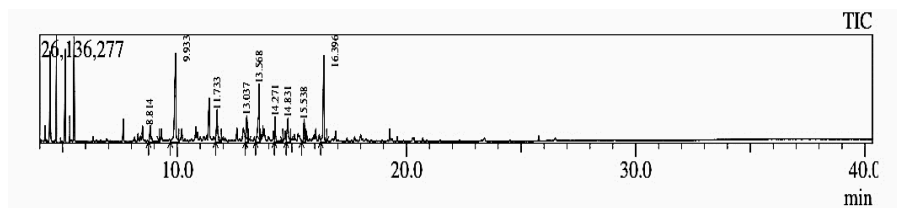
**Table 2. Quantitative estimation of phytochemicals of TPC and TFC in chloroform extract**

Evaluations	Sample concentration taken (mg/mL)	Absorbance	contents
TPC	1	0.483	58.36 mg GAE /g
TFC	0.1	0.289	142.29 mg QC /g

**Fig. 2. Calibration curve of standard (A) Gallic acid (B) Quercetin solution**

### 3.3. GC-MS Spectra Analysis

The GC-MS chromatogram of the chloroform extract of *A. marmelos* is presented in Figure 2.



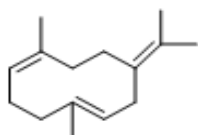
**Fig. 3. GC-MS chromatogram of chloroform extract of *A. marmelos***

The composition of the chloroform extract was analyzed by GC-MS and it revealed the presence of 9 major compounds, among which Limonene dioxide (27.78%) and Germacrene-B (20.65%) (Figure 3) were found to be the most abundant. Table 3

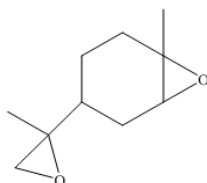
shows the compound detail obtained from GC-MS analysis.

**Table 3. List of Compounds detected in the chloroform extract**

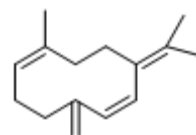
S.N.	Name of Compound	Retention time	Molecular formula	Molecular Weight	Area(%)
1	4(10)-Thujen-2-ol, acetate	8.814	C <sub>12</sub> H <sub>18</sub> O <sub>2</sub>	194	4.85
2	Limonene dioxide	9.933	C <sub>10</sub> H <sub>16</sub> O <sub>2</sub>	168	27.78
3	Cyclohexanone,2-(1-methyl-oxopropyl)	11.733	C <sub>10</sub> H <sub>11</sub> O <sub>2</sub>	168	8.38
4	(1S,2S,3R,5S)-(+)-Pinanediol	13.037	C <sub>10</sub> H <sub>18</sub> O <sub>2</sub>	170	6.40
5	Cis-caryophyllene	13.568	C <sub>15</sub> H <sub>24</sub>	204	15.14
6	1,4,7-cycloundecatriene,1,5,9,9,tetramethyl	14.271	C <sub>15</sub> H <sub>24</sub>	204	5.50
7	GermacreneD	14.831	C <sub>15</sub> H <sub>24</sub>	204	6.79
8	Cubenol	15.538	C <sub>15</sub> H <sub>26</sub> O	222	4.48
9	GermacreneB	16.396	C <sub>15</sub> H <sub>24</sub>	204	20.65



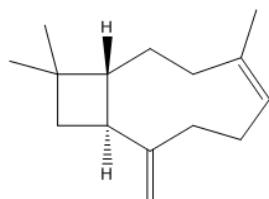
GermacreneB



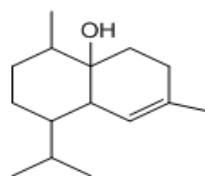
Limonene dioxide



GermacreneD



Cis-Caryophyllene



Cubenol

**Fig. 4. Molecular structures of some of the chemical compounds obtained from GC-MS**

**3.4. Antibacterial Activity**

The antibacterial test of plant extract was assessed against six different bacterial strains. The chloroform extract was able to show ZOI on *B. subtilis* culture of 7 mm and all other bacterial cultures were found to be resistant to the extract. Ampicillin (1 mg/mL) was taken as a positive control, and DMSO was used as a negative control. The chloroform extract was found to be effective against bacillus bacterial culture.

**Table 4. The diameter (mm) of the ZOI of the chloroform extract**

Bacterial culture used	Zone of inhibition
<i>S. aureus</i> KCTC 1916	No activity
<i>B. subtilis</i> KACC 17047	7mm
<i>M. leutus</i> KACC 13377	No activity
<i>P. aeruginosa</i> KACC 10232	No activity
<i>E. cloaceae</i> subsp. <i>disolvens</i> KACC 13002	No activity
<i>K. pneumonia</i> KCTC 2242	No activity

**3.5. Antioxidant Activity Evaluation**

The antioxidant potential exhibits an inverse relationship with the IC<sub>50</sub> value, which can be calculated through linear regression analysis of the percentage inhibition against concentration. A lower IC<sub>50</sub> value signifies its greater antioxidant potential.

**Fig. 5. Molecular structures of some of the chemical compounds obtained from GC-MS**

The IC<sub>50</sub> of the chloroform extract against the DPPH radical was determined to be 308.21 µg/mL (Figure 5). Additionally, chloroform extract also showed significant antibacterial activity against *B. subtilis*. Free radicals, specifically reactive oxygen species (ROS) and reactive nitrogen species (RNS) contribute to age-related damage to lipids, proteins, enzymes, and nucleic acids, leading to cellular or tissue injury and oxidative stress. Presence of these free radicals are associated with degenerative conditions including inflammation, cancer, atherosclerosis, diabetes, liver damage, Alzheimer's disease, Parkinson's disease, and coronary heart disease [22]. Any constituents with high antioxidant potential could be applicable as the therapeutic to reduce such stress and support to defence against diseases. The inhibitory concentration value of the chloroform extract towards DPPH free radical suggested the mild antioxidizing ability of the extract.

### **3.6. Brine Shrimp Toxicity Assay**

**Fig. 6. Plot of concentration of chloroform extract versus % mortality**

This study showed that the LC<sub>50</sub> value of the chloroform extract was found to be 157.49 µg/mL (Figure 6). Brine Shrimp Lethality Assay, serves as a preliminary toxicity screening method for plant extracts, fungal toxins, heavy metals, cyanobacterial toxins,

pesticides, and cytotoxicity of dental substances [23]. A lethal concentration of less than 200 µg/mL could be considered as a pharmaceutically potential and mild toxic substance [24]. The LC<sub>50</sub> of the chloroform extract showed the moderate toxic nature of the extract towards brine shrimp.

#### 4. Conclusion

In this study, the potential bioactivity test and chemical composition demonstration of the extract through GCMS was carried out. GC-MS analysis of chloroform extract showed the presence of nine major compounds. Chloroform extract showed antibacterial activity against *Bacillus subtilis* observed of 7 mm zone of inhibition. The extract showed mild oxidizing phenomena towards DPPH free radical and was found less toxic to the brine shrimp larva. All the results showed the potential therapeutic potential of the *A. marmelos* in this study. The isolation of the phytochemicals and evaluation of their therapeutic aptitude to the various diseases *in vitro* and *in vivo* approach would help to expose the pharmaceutical significance of this plant further.

#### References

- Sharma GN, Dubey SK, Sati N, Sanadya J. Phytochemical Screening, and Estimation of Total Phenolic Content in *Aegle Marmelos* Seeds. International Journal of Pharmaceutical and Clinical Research. 2011;2(3): 27–29.
- Gaurav Kumar L, Karthik KV, Bhaskara R, Sekar DK. A Review on Pharmacological and Phytochemical Properties of *Aegle marmelos*. Journal of Pharmacological Research 2011;1(2): 8–17.
- Mujeeb F, Bajpai P, Pathak N. Phytochemical Evaluation, Antimicrobial Activity, and Determination of Bioactive Components from Leaves of *Aegle Marmelos*. Biomedical Research International. 2014;2014:1–11. doi:10.1155/2014/497606.
- Kaushik P, Kumar S. Transcriptome Analysis of Bael (*Aegle Marmelos* (L.) Corr.) a Member of Family Rutaceae. Forests. 2018;9(8):1–14, doi:10.3390/f9080450.
- Choudhary Y, Saxena A, Kumar Y, Kumar S, Pratap V. Phytochemistry, Pharmacological and Traditional Uses of *Aegle Marmelos*. UK Journal of Pharmaceutical Biosciences. 2017;5:27. doi:10.20510/ukjpb/5/i5/166553
- Patil S, Muthusamy P, A Bio-Inspired Approach of Formulation and Evaluation of *Aegle Marmelos* Fruit Extract Mediated Silver Nanoparticle Gel and Comparison of Its Antibacterial Activity with Antiseptic Cream. European Journal of Integrated Medicine 2020;33:11–18. doi:10.1016/j.eujim.2019.101025.
- Singh AK, Singh S, Saroj PL, Krishna H, Singh RS, Singh RK. Research Status of Bael (*Aegle Marmelos*) in India: A Review. Indian Journal of Agricultural Sciences. 2019;89(10): 1563–1571.
- Siddique NA, Mujeeb M, Najmi AK, Akram M. Evaluation of Antioxidant Activity,

Quantitative Estimation of Phenols and Flavonoids in Different Parts of *Aegle Marmelos*. African Journal of Plant Science. 2010;4:01–005.

- Patel PK. *Aegle marmelos*: A Review on its Medicinal Properties. International Journal of Pharmacology and Psychopharmacology Res. 2012;1 (5):332-341.
- Banu KS, Cathrine L. General techniques involved in phytochemical analysis. International Journal of Advanced Research in Chemical Science. 2015;2 (4):25-32.
- Shrestha RLS, Panta R, Maharjan B, Shrestha T, Bharati, S, Dhital et al. Molecular docking and ADMET prediction of compounds from Piper longum L. Detected by GC-MS analysis in diabetes management. Moroccan Journal of Chemistry, 2024;12 (2):776-798.
- Du KZ, Li J, Guo X, Li Y, Chang YX. Quantitative analysis of phenolic acids and flavonoids in *Cuscuta chinensis* Lam. by synchronous ultrasonic-assisted extraction with response surface methodology. Journal of Analytical Methods in Chemistry. 2018. DOI: 10.1155/2018/6796720
- Kumar D, Dhurandhar K, Verma R, Barman S, Kumar A. To evaluation of total phenolics and flavonoids in the different plant of Chhattisgarh. Journal of Pharmacogn. Phytochemistry. 2013; 2(4):116–118.
- Mahmood N, Nazir R, Khan M, Khaliq A, Adnan, M, Ullah et al. Antibacterial Activities, Phytochemical Screening and Metal Analysis of Medicinal Plants: Traditional Recipes Used against Diarrhea. Antibiotics. 2019; 8. doi:10.3390/antibiotics8040194.
- Paudel N, Rai M, Adhikari S, Thapa A, Bharati S, Maharjan et al. Green Extraction, Phytochemical Profiling, and Biological Evaluation of *Dysphania ambrosioides*: An In Silico and In Vitro Medicinal Investigation. Journal of Herbs, Spices & Medicinal Plants. 2023;1-18.
- Sarah QS, Anny FC, Misbahuddin M. Brine shrimp lethality assay. Bangladesh Journal of Pharmacology. 2017;12:186–189. doi:10.3329/bjp.v12i2.32796.
- Bhattacharya A. Sood P, Citovsky V. The roles of plant phenolics in defense and communication during *Agrobacterium* and *Rhizobium* infection. Molecular Plant Pathology. 2010; 11:705–719.
- Hussain SM, Ahmed AL, Shrihith A, Sateesh MKA. Computational approach for the evaluation of bioactive compounds from ethnobotanicals for their pharmacological potential and biological activity. World journal of pharmacy and pharmaceutical sciences. 2017;5(12):363-377.
- Neupane P, et al. Exploration of Anti-Diabetic Potential of *Rubus ellipticus* Smith through Molecular Docking, Molecular Dynamics Simulation, and MMPBSA Calculation. Journal of Nepal Physical Society. 2023; 9(2): 95-105.

- Heim KE, Tagliaferro AR, Bobilya DJ. Flavonoid antioxidants: chemistry, metabolism, and structure-activity relationships. *Journal of Nutrition and Biochemistry*. 2002;13(10):572–584.
- Matés JM, Sánchez-Jiménez F. Antioxidant enzymes and their implications in pathophysiologic processes. *Frontiers in Bioscience*.1999;4:339-345.
- Mosquera OM, Correa YM, Buitrago DC, Niño J. Antioxidant activity of twenty-five plants from Colombian biodiversity. *Memorias do Instituto Oswaldo Cruz*. 2007;102(5):631-634.
- Rejiniemon TS, Arasu MV, Duraipandiyan V, Ponmurugan K, Al-Dhabi NA, Arokiyaraj, S, Agastian et al. In-vitro antimicrobial, antibiofilm, cytotoxic, antifeedant and larvicidal properties of novel quinone isolated from *Aegle marmelos* (Linn.) Correa. *Annals of clinical microbiology and antimicrobials*. 2014;13(1):1-9. doi:10.1186/s12941-014-0048-y.
- Niksic H, Becic F, Koric E, Gusic I, Omeragic E, Muratovic et al. Cytotoxicity screening of *Thymus vulgaris* L. essential oil in brine shrimp nauplii and cancer cell lines. *Scientific Reports*. 2021;11(1):13178.