

Assessment of Physico-chemical Properties of Soil from Different Blocks of Namchi district of Sikkim, India

ABSTRACT

The present research topic entitled "Assessment of Physico-chemical Properties of Soil from Different Blocks of Namchi District of Sikkim, India" study was carried out at Naini Agricultural Institute, Sam Higginbottom University of Agriculture Technology and Sciences, Prayagraj. Department of Soil Science and Agricultural Chemistry (U.P.), during the year 2023. The soil samples were collected at three depths: 0-15 cm, 15-30 cm, and 30-45 cm, from nine different villages of three different blocks under Namchi district. A total of 27 soil samples collected and analysed for their physical and chemical parameters by using the standard Laboratory Technique. The result showed that the soil texture of Namchi, Temi and Sikkim blocks were mainly sandy clay loam. The Bulk Density reported 1.1 -1.29 Mg m⁻³, Particle Density reported 2.1- 2.6 Mg m⁻³, Percent of Pore space varied 45-47.6%, Water holding Capacity ranged from 45-49.3 %. Results suggest that farmers should adopt appropriate soil management techniques, such as crop rotation and conservation tillage, which will contribute to maintain the soil's physical characteristics to ensure the sustainability of agricultural practices and the long-term health of the soil.

Keywords: Physico-chemical parameters, Namchi, Sikkim.

Commented [SC1]: Add introduction (1 to 2 sentences).

Commented [SC2R1]: Add also objective of the study

Commented [SC3R1]: Improve your abstract

1. INTRODUCTION

Soil is one of the most important natural resources for human welfare. It has been meeting the needs of food, clothing, and shelter for a long time. It is a resource vulnerable to decay. Once lost, it is almost impossible to recover. (Zubber *et al.*, 2021). An understanding of physical and chemical condition of any soil is essential for proper implementation of the Understanding the physical and chemical condition of any soil is essential for properly implementing other management practices. The physical properties of a soil play an important role in determining its suitability for crop production. The characteristics like supporting power and bearing capacity, tillage practices, moisture storage capacity and its availability to plants, drainage, ease of penetration by roots, aeration, retention of plant nutrients, and availability to plants are all intimately connected with the physical properties of the soils. Therefore the physico-chemical study of soil is very important because both physical and chemical properties which affect the, the physico-chemical study of soil is very important because physical and chemical properties affect soil productivity. This physico-chemical study of soil is based on various parameters like pH, electrical conductivity, texture, moisture, temperature, soil organic matter, available nitrogen, phosphorus. physicochemical study of soil is based on various parameters like pH, electrical conductivity, texture, moisture, temperature, soil organic matter, available nitrogen, phosphorus, and potassium. This knowledge will create awareness among the farmers about economic productivity. (Sangita Pradeep Ingole, 2015).

Commented [SC4]: This part needs more improvement.
Add discussion about the sampling area and why a conduct on the said area.
Add also the objective of your study.
Add also significance of your study.

2. MATERIALS AND METHODS

2.1 Soil sampling

Namchi district of ~~sikkim~~ Sikkim is located on the map with the GPS coordinates of 27°09'20.5"N 88°22'07.0"E (fig 1). A total of ~~twenty seven soil samples were collected at different depths of 0-15cm, 15-30cm and 30-45 cm, from three different blocks and three villages per each block of namchi district of sikkim~~ twenty-seven soil samples were collected at different depths of 0-15cm, 15-30cm, and 30-45 cm from three different blocks and three villages per block of the Namchi district of Sikkim with the help of a soil auger. These villages are ~~upper ghurpisey, pabong and kholaghari under namchi block, deu, peku and lower tea Garden under Temi block and middle wok, lower wok and upper chumlok under Upper~~ Ghurpisey, Pabong, and Kholaghari under the Namchi block, Deu, Peku, and lower tea garden under the Temi block and Middle Wok, lower Wok, and Upper Chumlok under the Sikkim block.

Commented [SC5]: How did you identify the sampling area where the soil was being collected? Is there any consideration done on where and how the soil is being collected? Where did you store the fresh soil samples, and how many grams of each soil sample per depth was being collected? Add these details because they are important to your studies.

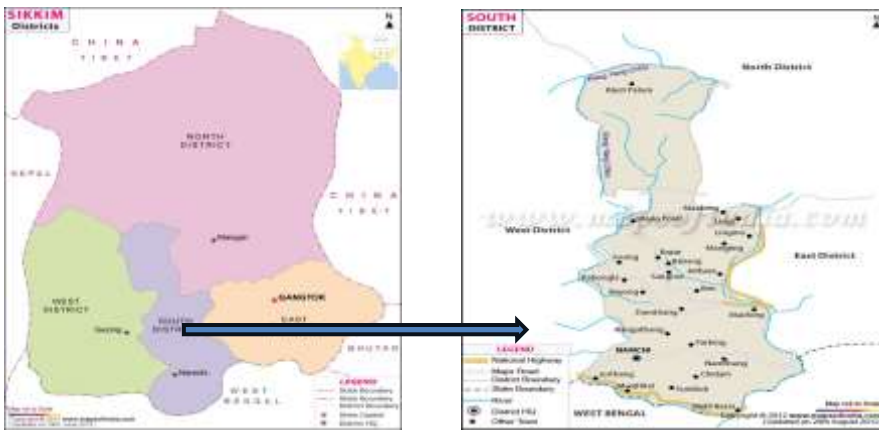


Fig 1 Location of study area

Commented [SC6]: Improve the description of the figure. Also improve your map layout.

Samples were ~~air-dried in the shade, and large clods were broken using a~~ ~~dried in shade and large clods were broken using~~ wooden mallet. Using ~~2 mm sieve the powdered soils were sieved and were collected in a polythene bag and was a 2 mm sieve, the powdered soils were sieved, collected in a polythene bag, and~~ labeled properly for laboratory analysis. The collected samples were ~~analysed-analyzed~~ analyzed for physical and chemical parameters. Soils were analyzed for ~~its-their~~ textural class by Bouyoucos hydrometer method (Bouyoucos, 1927), soil ~~colour-color~~ color by using Munsell soil ~~colour-color~~ color chart (Albert H. Munsell, 1954), bulk density and particle density was determined by ~~the~~ graduated measuring cylinder method (Muthuvel *et al.*, 1992), pH was determined by pH meter by making 1:2 soil water suspension (Jackson, 1958), ~~where-as~~ ~~whereas~~ EC was measured by digital EC meter (Wilcox, 1950), organic carbon was determined by wet-oxidation method (Walkley, 1947), available nitrogen was determined by alkaline potassium permanganate method by 800ml ~~Kj~~ Kjeldhal flask (Subbiah and Asija, 1956), available phosphorous was determined by ~~the~~ colorimetric method by using ~~a~~ spectrophotometer (Olson *et al.*, 1954), available potassium was determined by flame photometer using neutral ammonium acetate solution (Toth and Prince, 1949), exchangeable calcium and magnesium ~~were was~~ estimated by ~~V~~ versenate titration method (Gupta, 1999).

2.2 Statistical Analysis

The data recorded ~~during the course of during~~ during the investigation was ~~asill be~~ subjected to statistical

analysis by CRD (Completely Randomized Design), as per the method “Analysis of Variance (ANOVA) technique” (as given by Fisher, (1960). The data derived from various determinations will be subjected to statistical analysis including mean, Pearson's Correlation, t-test, including mean, Pearson's Correlation, t-test, and ANOVA. The means for the levels in of soil in the three divisions will be determined. Using ANOVA and t-test, the means will be compared to determine whether they were significantly different.

3. Results and Discussion

3.1 Physical properties of soil

The data of all the physico-chemical properties of the soil of some selected areas under Namchi district of Sikkim along with its line graphs and correlation with respect to depths 0-15cm, 15-30cm and 30-45cm physicochemical properties of the soil of some selected areas under Namchi District of Sikkim, along with its line graphs and correlation concerning depths 0-15cm, 15-30cm, and 30-45cm (are presented in the Table 1-5 Table 1-5). The data show that soil texture varied from sandy clay loam to loam at different depths of soil which was found to be similar to the study of Deb *et al.*, the soil, similar to Deb *et al.*'s study (2013). The colours of dry condition were light brown, brown, dark brown and pale brown and that of wet condition were light gray, dark gray, red, reddish brown colors of dry condition were light brown, brown, dark brown, and pale brown, and those of wet condition were light gray, dark gray, red, reddish brown, and dark brown. The dominant colour/color was found to be red and dark brown due to the presence of sesquioxides and high organic matter content. This/These results were similar to Nayak *et al.* (2002)

The Bulk/Particle density varied from 1.1-1.29 Mgm^{-3} and the Particle density varied from 1.15-2.6 Mgm^{-3} . The porosity of the soil decreased with respect to depth in loamy soils but increased with depth in sandy loam soil. The bulk density, particle density and porosity were widely considered to be important factors contributing to the water holding, and porosity were widely considered essential factors contributing to the water-holding capacities of the soil. It was observed that the mean percent of water holding capacity decreases with increase in bulk density and particle density and increases with increase in porosity which had similar results to that of Guo *et al.*, an increase in bulk density and particle density and increases with an increase in porosity, which had similar results to that of Guo *et al.* (2011) and Bisth *et al.* (2010).

3.2 Chemical Properties of soil

The value of pH ranges from 5.3-6.3 with a mean of 5.3, 5.5, and 5.6 with respect to depth. The results were similar to that of Pradhan *et al.*, (1996). The organic carbon status of soil sample ranged from 0.38-0.74% with a mean value of 0.57, 0.53 samples ranged from 0.38-0.74% with a mean value of 0.57, 0.53, and 0.54 percent with respect to depth. The organic carbon content decreased with range because the top 0-15cm is associated with intensive cropping associated with application of organic manures by farmers during farmers' application of organic manures during the cultivation of different crops. Debnath *et al.*, (2009) also reported the higher organic carbon content in rice growing soils of Terai Zone of west bengal *et al.* (2009) also reported the higher organic carbon content in rice-growing soils of the Terai zone of West Bengal, where the farmers usually apply organic manure.

The available Nitrogen content of soil ranged from 200-326kg/ha. This is believed to be due to

Formatted: Font: Not Italic

Formatted: Font: Not Italic

Formatted: Font: Not Italic

the addition of the addition of organic amendments in to the soil. The study of Mishra *et al. et al.* (2000-) showed similar results. The available phosphorus content ranged from 15-26 kg/ha which is similar to the findings of Ram *et al.*, from 15-26 kg/ha, which is similar to the findings of Ram *et al.* (2014). Available Potassium content of soil ranged from 238-348 kg/ha which is considered medium to high. The available potassium content of soil ranged from 238-348 kg/ha, which is considered medium to high, and this could be because of the presence of feldspar and muscovite mica found in the soils of this region. This finding is similar to like that of Ram *et al. et al.* (2014).

Exchangeable Calcium content of soil ranged from 0.06-0.39 meq/100g and Exchangeable Magnesium content of soil ranged from 0.04-0.56 meq due to the amount of rainfall prevailing in the study area that causes surface leaching of basic cations, this findings were similar to the study of Ray *et al.* The exchangeable calcium content of soil ranged from 0.06-0.39 meq/100g, and the exchangeable magnesium content of soil ranged from 0.04-0.56 meq due to the amount of rainfall prevailing in the study area that causes surface leaching of basic cations; these findings were similar to the study of Ray *et al.*, (2012). The Sulphur content of soil ranged from 8.5-21.45 kg/ha.

Table 1 : Bulk density and particle density (Mgm⁻³)

Commented [SC7]: Transform this into a multiple-bar graph. To easily observed the trends.

Blocks	Village	Bulk density			Particle density			
		Depth	0-15cm	15-30cm	30-45cm	0-15cm	15-30cm	30-45cm
Namchi	Pabong		1.1	1.16	1.18	2.25	2.27	2.3
	U. ghurpisey		1.14	1.18	1.21	2.2	2.6	2.7
	Kholaghari		1.24	1.28	1.29	2.3	2.5	2.6
Temi	Lower tea garden		1.22	1.24	1.26	2.1	2.4	2.52
	Deu		1.26	1.28	1.3	2.3	2.5	2.6
Sikkip	Peku		1.21	1.25	1.27	2.26	2.3	2.4
	Middle vok		1.27	1.29	1.3	2.28	2.29	2.32
	Lower vok		1.26	1.27	1.29	2.24	2.3	2.4
	Upper chumlok		1.12	1.15	1.18	2.05	2.13	2.2

		F-test	S.Em.(±)	C.D @5%	F-test	S.Em.(±)	C.D@5%
Due to Depth		S	0.0257	3.6808	S	0.1158	0.00016
Due to village		S	0.0566	4.4612	S	0.1174	0.00202

Commented [SC8R7]: Show also the standard acceptable range

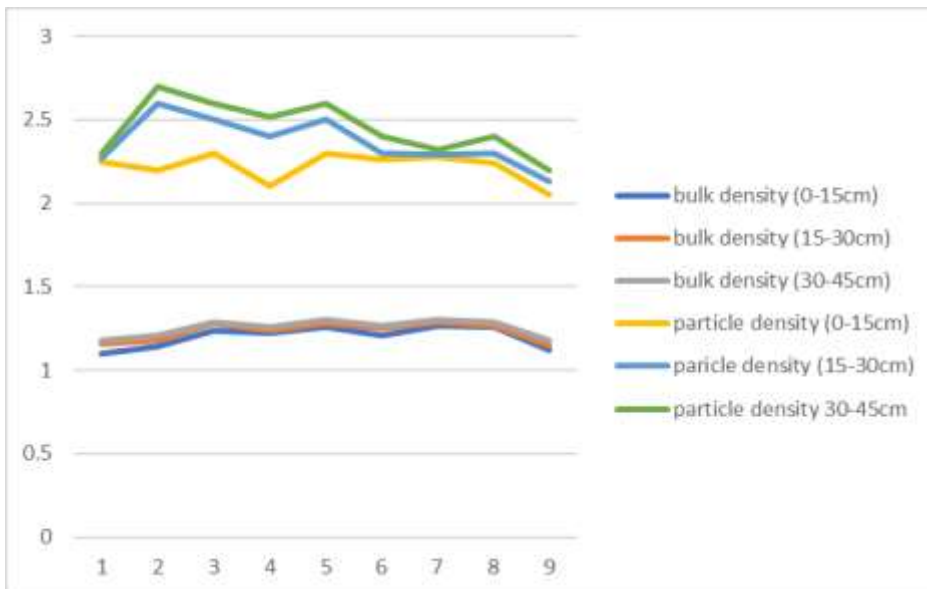


Fig 2) Shows bulk density and particle density at depths 0-15cm,15-30cm and 30-45cm respectively.

Table 2: Pore space and water holding capacity (%)

Commented [SC9]: Transform this into a multiple-bar graph. To easily observed the trends.

Blocks	villages	Pore space			Water holding capacity		
		0-15cm	15-30cm	30-45cm	0-15cm	15-30cm	30-45cm
Namchi	Pabong	47	46	45.5	46	46.7	47
	U. ghurpisey	46	45	45.6	47	48	48.7
	Kholaghari	46	45	45	46	45.8	45
	Lower tea garden	48	46	45.7	45.61	45	44.8
Temi	Deu	48	47	46	48	48.6	49
	Peku	47	46.8	46	47	47.8	48
	Middle vok	49	48	46	47	46	45.9
Sikkip	Lower vok	47	46	45.5	46	45.8	45
	Upper chumlok	48	47.6	46	48	49	49.3

		F-test	S.Em.(±)	C.D@5%	F-test	S. Em. (±)	C.D @5%
Due to depth		NS	0.820594	1.3905	S	0.134074	0.651115
Due to village		NS	0.760381	0.000519	NS	1.351001	4.5106

Commented [SC10R9]: Show also the standard acceptable range

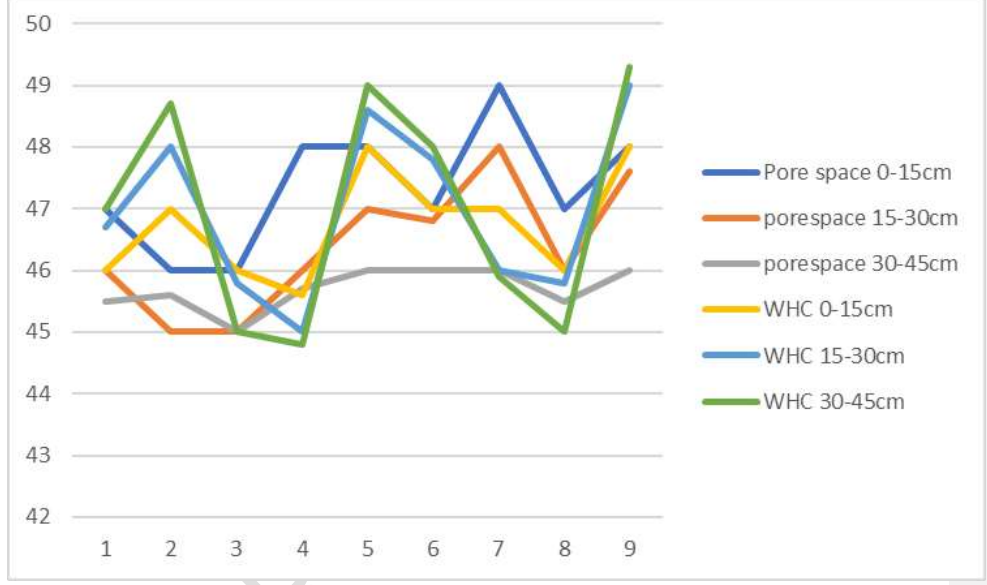


Fig 3) Shows Pore space and WHC at depths 0-15cm, 15-30cm and 30-45cm respectively.

Table 3: pH, EC(dSm⁻¹) and Organic carbon (%)

Commented [SC11]: Transform this into a multiple-bar graph. To easily observed the trends.

Commented [SC12R11]: Show also the standard acceptable range

Blocks	Villages	pH			EC			Organic Carbon		
		0-15cm	15-30cm	30-45cm	0-15cm	15-30cm	30-45cm	0-15cm	15-30cm	30-45cm
Namchi	Pabong	5.5	5.6	5.8	0.06	0.07	0.08	0.5	0.49	0.45
	u. ghurpisey	5.3	5.4	5.5	0.04	0.05	0.07	0.6	0.56	0.55
	Kholaghari	5.8	5.9	6	0.04	0.05	0.06	0.8	0.74	0.72
	Lower tea garden	5	5.3	5.4	0.08	0.09	1.02	0.5	0.5	0.48
	Deu	5	5.2	5.4	0.07	0.09	1	0.4	0.38	0.38

Temi	Peku	5.2	5.3	5.4	0.06	0.07	0.08	0.6	0.6	0.59
	Middle vok	6	6.2	6.3	0.13	0.14	0.15	0.5	0.49	0.46
Sikkip	Lower vok	5.3	5.4	5.6	0.11	0.12	0.13	0.6	0.5	0.6
	Upper chumlok	5.4	5.6	5.8	0.13	0.14	0.15	0.7	0.6	0.59
		F-test	S. Em. (±)	C.D @5%	F-test	S. Em. (±)	C.D @5%	F-test	S. Em. ±	C.D @5%
Due to depth		NS	0.150034	5.5309	NS	0.126498	0.099391	NS	0.02320	0.0090
Due to village		NS	0.322653	7.9913	NS	0.136678	0.446734	NS	0.10596	1.72

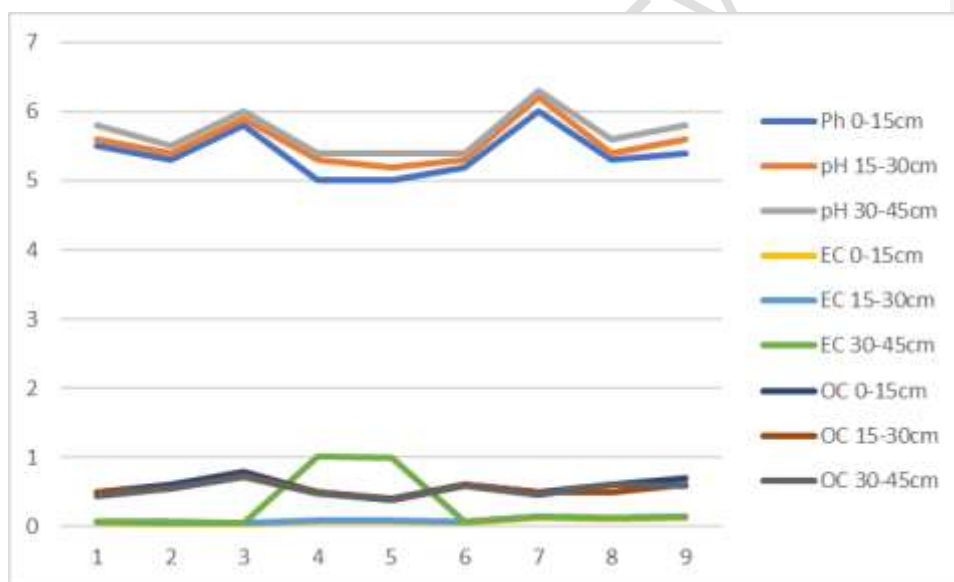


Fig 4) Shows pH, EC and OC at depths 0-15cm, 15-30cm and 30-45cm respectively.

Table 4: Available Nitrogen, Available Phosphorus and Available potassium (Kg/ha)

Blocks	Village	Available Nitrogen			Available phosphorus			Available potassium		
		0-15cm	15-30cm	30-45cm	0-15cm	15-30cm	30-45cm	0-15cm	15-30cm	30-45cm
Namchi	Pabong	272	268	266	17.5	18	15	287.4	283	280
	U.ghurpisey	200	189	186	15	16.5	26	312	298.5	292

Commented [SC13]: Transform this into a multiple-bar graph. To easily observed the trends. Show also the standard acceptable range

Namchi	Pabong	0.33	0.30	0.27	0.28	0.25	0.21	11	13	12.6	
	U. ghurpisey	0.39	0.35	0.29	0.21	0.19	0.11	16	18	14	
	Kholaghari	0.28	0.25	0.3	0.29	0.15	0.15	19	14	14	
Temi	Lower Tea Garden	0.12	0.9	0.06	0.31	0.27	0.24	9	9.8	7	
	Deu	0.06	0.05	0.03	0.56	0.43	0.28	8.5	9	12	
	Peku	0.10	0.9	0.4	0.29	0.24	0.21	17	15	18	
Sikkip	Middle vok	0.15	0.12	0.10	0.04	0.04	0.06	20	21	23	
	Lower vok	0.18	0.10	0.08	0.07	0.06	0.05	15	17	18	
	Upper chumlok	0.32	0.21	0.21	0.56	0.03	0.09	21.45	20	17	
		F-test	S. Em. ±	C.D @5%	F-test	S. Em. ±	C.D @5%	F-test	S. Em. ±	C.D @5%	Commented [SC15R14]: Show also the standard acceptable range
Due to depth		S	0.0865	0.2232	S	0.0707	4.977	S	0.082215	0.984	
Due to village		NS	0.1342	0.3003	NS	0.113	4.283	NS	4.220074	8.06	

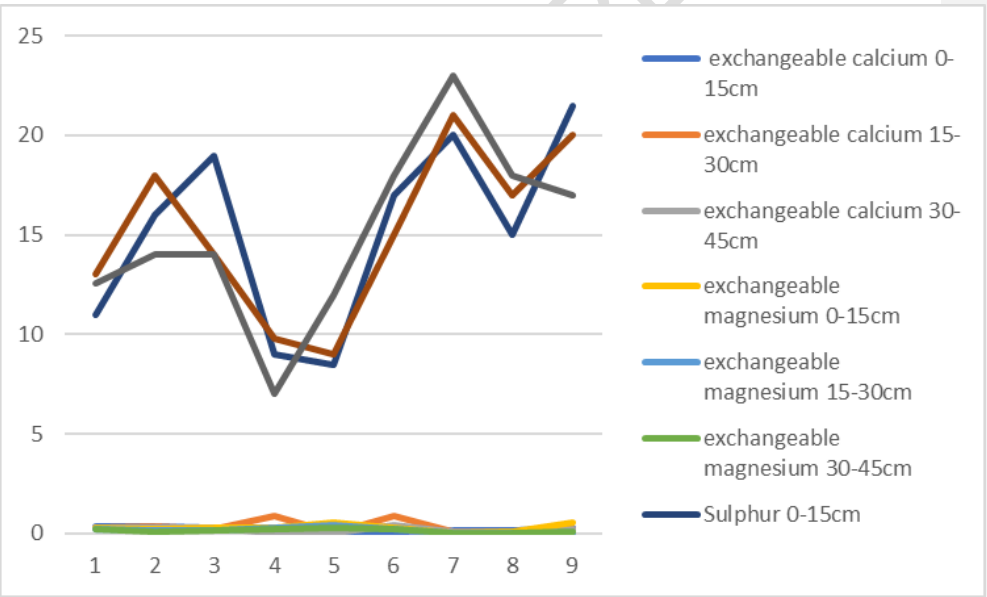


Fig 6) Shows Ca, mg and S range at depths 0-15cm, 15-30cm and 30-45cm respectively.

Table 6 :Correlation of different physical and chemical parameters of soil from different

villages under Namchi, Temi and Sikkip blocks at depths 0-15cm, 15-30cm and 30-45cm.

Commented [SC16]: Improve the table, follow journal instructions for table presentation

	Bd	Pd	Porespace	WHC	pH	EC	OC	N	P	K	Ca	Mg	S
Bd	1												
Pd	0.500135	1											
porespace	-0.32623	0.281027	1										
WHC	-0.07259	0.126405	0.587084	1									
pH	0.08072	0.330142	0.191093	0.575717	1								
EC	0.17856	-0.37849	-0.40603	0.422061	-0.220274	1							
OC	-0.16802	-0.16408	0.597674	0.49218	0.39428	-0.11767	1						
N	0.243141	0.366331	0.455162	0.285202	0.191973	-0.10313	0.450183	1					
P	0.526295	0.356968	0.200699	0.542518	0.082372	0.372862	-0.06185	0.30043	1				
K	-0.14701	-0.15113	0.405503	0.434687	0.503716	-0.08214	0.941985	0.334777	-0.16083	1			
Ca	-0.7605	-0.27406	0.425127	0.34931	0.338544	-0.21328	0.520385	-0.22888	-0.42201	0.613408	1		
Mg	-0.31511	-0.34764	0.320127	0.006696	-0.48419	-0.09544	-0.01719	-0.06608	0.3035	-0.25113	-0.03862	1	
S	-0.06441	-0.09953	0.428316	0.731279	0.679187	0.354502	0.718168	0.207629	0.052196	0.658815	0.373734	-0.20584	1

Table 6. a) At depth 0-15cm

	Bd	Pd	Porespace	WHC	pH	EC	OC	N	P	K	Ca	Mg	S
Bd	1												
Pd	0.296016	1											
Porespace	-0.22234	0.086236	1										
WHC	-0.09604	-0.42222	0.572673	1									
pH	0.179045	-0.21915	0.05862	0.480501	1								
EC	0.075107	-0.70611	-0.42868	0.417065	-0.290983	1							
OC	-0.0920	0.015247	0.58215	0.254821	0.351368	-0.34189	1						
N	0.319765	-0.30056	0.398258	0.228249	0.080046	-0.12909	0.468986	1					
P	0.461121	-0.23313	0.394157	0.48173	-0.10745	0.271624	0.108198	0.61185	1				
K	-0.19829	-0.16377	0.259435	0.37548	0.436775	-0.01698	0.778611	0.284321	-0.09894	1			
Ca	-0.08858	0.001668	-0.22882	-0.72068	-0.38743	-0.35097	0.208507	0.122818	-0.26206	-0.03814	1		
Mg	0.110351	0.511518	-0.0319	-0.62279	-0.63068	-0.54301	-0.44126	-0.08329	-0.02438	-0.78883	0.265682	1	
S	-0.2033	-0.40363	0.170947	0.689057	0.582223	0.479866	0.308599	-0.16905	-0.03314	0.568724	-0.31543	-0.88391	1

Table 6. b) At depth 15-30cm

	Bd	Pd	porespace	WHC	pH	EC	OC	N	P	K	Ca	Mg	S
Bd	1												
Pd	0.343273	1											
Porespace	-0.28419	-0.01475	1										
WHC	-0.11567	-0.48260	0.576994	1									
pH	0.066343	-0.40659	0.006220	0.571145	1								
EC	0.3042990	0.322417	-0.57445	-0.66441	-0.49135	1							
OC	0.0129640	0.052528	0.449850	0.3764660	0.172445	-0.59766	1						
N	0.272216	-0.234670	0.285072	0.04209	-0.02108	-0.217950	0.520824	1					
P	0.438433	0.45594	-0.3552	-0.22704	-0.218530	0.0968620	0.037069	-0.33485	1				
K	-0.24939	-0.220020	0.3282280	0.6600420	0.564696	-0.877140	0.6395570	0.032874	-0.03464	1			
Ca	-0.39362	-0.013770	0.7119790	0.1751890	0.010617	-0.70274	0.363520	0.409199	-0.152040	0.386232	1		
Mg	0.0461390	0.323104	-0.02762	-0.68325	-0.572270	0.666603	-0.44731	0.1787	-0.29139	-0.84717	-0.02822	1	
S	0.205911	-0.477850	0.2419520	0.7460910	0.590029	-0.65030	0.2073080	0.0730050	0.2221460	0.5260260	0.162272	-0.71759	1

Table 6 c) At depth 30-45cm

CONCLUSION

Commented [SC17]: Improve the conclusion

The study of ~~physical and chemical properties of soils of the~~ physical and chemical properties of soils of the Namchi district of Sikkim concluded that the soils have good physical properties for the cultivation of most crops. The ~~colour/color~~ of the soil is dominantly red and brown. The bulk density and particle density values were considerably low and increased with ~~increased/increase in~~ depth. The water holding capacity decreases with ~~increase in depth and increases with an increase in depth and increases with an~~ increase in pore space. The available nitrogen, phosphorus, and potassium content is high due to ~~the application of the application of~~ organic soil amendments and good management practices. ~~All these properties of the soil is indicative of good cultivation of crops like ginger, cardamom, paddy, buckwheat, oranges and guava and vegetables like cabbage, squash~~ soil properties indicate good crop cultivation, like ginger, cardamom, paddy, buckwheat, oranges, and guava, and vegetables like cabbage, squash, and spinach.

Commented [SC18]: Are these part of your objective? Why you say so that these are suitable to these type of plants. ?

References

Ahamed, Z. (2021). A study on soil problems in North Bengal, West Bengal, India. *Mazedan Chemical Research Journal*, 2(1), 1-3.

Bisht, A.S. and Bhatt, A.B.(2010). Physico-chemical status of forest soils along altitudinal gradient in Western Uttarakhand Himalayas. *Indian J. Ecol*, 37(1):65-69

Commented [SC19]: Spell out: Indian Journal Ecology

Black, C A. (1965). Methods of soil analysis. *American Society of Agronomy*, Madison,

Wisconsin, USA.

Bouyoucos, G. J. (1927). The hydrometer as a new method for the mechanical analysis of soils. *Soil Science*, 23: 343-353.

Deb Proloy (2013) *Indian journal of Agricultural research* 48(2) 120-126

Debnath, P., Mahanta, M. and Ghosh, S.K. (2009). Distribution of available boron in the selected surface and subsurface soils of Terai zone of West Bengal in relation to physico-chemical properties. *J. Maharashtra Agric. Universities* 3, 357 – 358.

Fisher, R. A. (1960). The design of experiments. Seventh edition. Hafner publishing company, New York. [inc](#)

Guo, Q., Wang, D., Fang, K., and Bao, J. 2011. Dependence of soil physical properties on altitudes in *Pinus Aramandii* forest ecosystem. *Bioinformatics and Biomedical engineering*, 5th international conference, Yangling, China.

Jackson, M.L. (1927) *Soil Chemical analysis. Prentice hall of India Pvt. Limited, New Delhi*, 38:226.

Ingole Sangita Pradeep (2015). A review on role of physico-chemical properties in soil quality, *Chemical science review and letters*, 57-66.

Mishra, T. K., Nanda, A.K., Mandal, P, and Saha, A. (2017) Physiochemical Properties of Soils under Different Tea Growing Regions of North Bengal: A study from 2006 to 2010. *International Journal of Research in Chemistry and Environment*. 8 (1), 44-48

Munsell, A. H. (1954). *Munsell Soil Color Charts. Munsell Color Company Inc., Baltimore.*

Muthuvel, P., Udayasoorian, C., Natesan, R., & Ramaswami, P. R. (1992). *Introduction to Soil Analysis. Tamil Nadu Agricultural University, Coimbatore.*

Nayak, R.K., Sahu, G.C and Nanda, S.S.K (2002). Characterization and classification of soils of Central Research Station, Bhubaneshwar. *Agropedology*, 12:1-8.

Olsen, S.R., Cole, C.V., Watanable, F.S and Dean, L.A (1954). Estimation of available phosphorus in soil by extraction with sodium bicarbonate, USDA, *Circular*, 939: 1-19.

Pradhan, Y., Sachan, R.S. and Avasthe, R.K. (1996). *Relationship between altitude and status of zinc and copper in some soils of Sikkim. J. of Hill Res.* 9(1): 11-17

Ray, S.K. and Mukhopadhyay, D. (2012) A study on Physicochemical Properties of soils under tea growing Regions of West Bengal (India), *International Journal of Agriculture Science*; 4(8): 325-329

Commented [SC20]: Incomplete information: volume and page number

Formatted: Font: Not Italic

Commented [SC21]: Journal name

Commented [SC22]: Incomplete information: title of the study?

Commented [SC23]: Spell out

Commented [SC24]: Incomplete info:

Commented [SC25]: Incomplete info

Commented [SC26]: Incomplete info

Ram R, Chatterjee S, Maji C, Sharma PK, rani P. (2016) Effect of soil health, Nutrient management and soil test based doses of lime on mulberry leaf yield (*Morus alba L.*) in acid soils of kalimoong hills. *International journal of Agriculture sciences*. 8(59): 3333-3337

Subbiah, B.V. and Asija, G.L. (1956). A rapid procedure for the estimation of available nitrogen in soils. *Current Science*, 25: 259-260.

Toth, S.J and Prince, A.L. (1949). Estimation of cation exchange capacity and exchangeable Ca, K and Na content of soil by Flame Photometer method. *Soil Science*. 67:437445.

Walkley, A and Black, C.A (1934). An estimation for different methods for determining soil organic matter and a proposed modification of the chromic acid titration method. *Soil Science*. 37:29-38.

Wilcox, L.V. (1950). Electrical Conductivity. *American Water Work Association Journal*. 42:775-776.

UNDER PEER REVIEW