

1  
2  
3  
4  
5  
6  
7

# The impact of testosterone suppression on dental structures: An in vivo study

8 **ABSTRACT**

**Aim:** The aim of this study was to evaluate the impact of testosterone (T) suppression during puberty on the development of dental, periodontal and alveolar structures in rats.

**Materials and Methods:** Thirty-six Wistar rats were selected for this study. Orchiectomy (ORX) was performed on the animals of the experimental group (n=18) and sham surgery on the animals of the control group (n=18) on the 23rd day of life. The animals were allocated into 4 groups: an ORX group (n=9) and a sham group (n=9) euthanized at 45 days of age, and the other ORX group (n=9) and the other sham (n=9) euthanized at 73 days of age. After the experimental period, the animals were euthanized and the mandibles and maxillas were removed, dissected and fixed in 10% formalin, decalcified, cut at 7 µm and stained with hematoxylin and eosin and picosirius red. Qualitative analysis of slides stained with Hematoxylin and Eosin were performed, while collagen synthesis obtained from slides stained with Red Silver was quantitatively evaluated using ImageJ software. Collagen synthesis was compared between groups using the student's t test using the IBM SPSS software.

**Results:** Histologically, the animals submitted to orchiectomy showed variations in the periodontal region, immature alveolar bone and periodontal ligament with the presence of atypical fat cells, in the dental structures, hyperemic pulp with calcification points (nodules) and variation in the arrangement and shape of the odontoblasts, with considerable significance when compared with the animals of the Sham group.

**Conclusion:** In conclusion, the testosterone suppression induces changes in the differentiation of cells that form the tissues of dental and alveolar structures, through the incidence of pulp alterations, presence of atypical cells in the periodontal ligament and delay in the neoformation of alveolar bone in rats during puberty.

**Key words:** Testosterone; Tooth; Dentin; Pulp; Alveolar bone; Periodontal ligament, Collagen fibers.

10  
11  
12  
13 **1. INTRODUCTION**

14  
15 Testosterone is the predominant sex hormone in males and is responsible for the individual's sexual maturation during adolescence. Testosterone is involved in several physiological processes, mainly in bone metabolism [1-3]. Some conditions can unbalance plasma testosterone levels, such as congenital or acquired conditions, and lead to dysfunction in bone metabolism [4,5]. Studies in humans and animals have shown that decreases in testosterone concentrations can lead to decreased bone mineral density [6], decreased osteoblast differentiation, and collagen synthesis [7].

16  
17  
18  
19  
20  
21 Previous studies showed that both dental and periodontal structures are sensitive to testosterone since cells in these regions have the Androgen Receptor in their plasma membranes [8-10]. In addition, the studies also show the direct role of testosterone on the differentiation of undifferentiated cells into osteoblasts, odontoblasts, and fibroblasts. Since testosterone acts directly on the differentiation of cells crucial for the development of dentoalveolar structures, it is plausible to assume that the development of these structures is significantly affected by testosterone dysfunctions. Some studies have already been carried out to evaluate the impact of testosterone on alveolar, periodontal, and dental structures [11-17]. However, several limitations of these studies did not allow a robust conclusion. Additionally only Roberts et al. (1985), Gaethofs et al, (1999) and Wang et al. (2016) evaluated the impact of testosterone during puberty.

22  
23  
24  
25  
26  
27  
28  
29

30 Thus, this study aimed to evaluate the effects of testosterone suppression during puberty on the development of dental and  
31 periodontal structures.

## 32 33 **2. MATERIAL AND METHODS**

34  
35 This study is part of a broad line of research initiated by Reis et al. (2022). The PREPARE guideline (Planning Research  
36 and Experimental Procedures on Animals: Recommendations for Excellence) [20] was used for the design of this study,  
37 and the ARRIVE guideline (Animal Research: Reporting 60 In Vivo Experiments) was followed for the report [21].

38  
39 This study was approved by the Ethics Committee on the Use of Animals of the Federal University of Alfenas (protocol:  
40 024/2019). All recommendations from recognized institutions for animal welfare were followed.

41  
42 Formula according to Miot (2011) [22] was used to calculate the sample size to compare a hypothesis in two independent  
43 groups. Cohen's D effect size was obtained from the results of Omori et al., 2021 [23]. Under an  $\alpha = 0.05$  and  $\beta =$   
44  $0.80$ , the result of 7 animals per group was obtained. After orchietomy, the animals could suffer from hypothermia and  
45 infections resulting from the surgery, and about 20% of them could die from these complications [24]. Therefore, it was  
46 necessary to add two more animals per group, totaling 9 animals per group ( $n=36$ ).

47  
48 Heterogenic male rats of the species *Rattus norvegicus* of the Wistar strain obtained at the Center for Bioterism of the  
49 Federal University of Alfenas (UNIFAL- MG) were obtained on the day of weaning (21 days). Three animals remained in  
50 each polypropylene box measuring 49x34x16, lined with wood shavings. The animals had free access to food and filtered  
51 water at a controlled temperature between 21° to 23° Celsius with air exhaustion and within a 12-hour light-dark cycle.  
52 Animals were not randomly housed to avoid losses from bite wounds [25-27].

53  
54 The animals were randomly allocated by a researcher who did not perform the surgeries into two large groups: Orchietomy  
55 (ORX – Group 1) and Sham Surgery (Sham – Group 2). Both groups were divided into two more groups: a group that would  
56 be euthanized at 45 days of life (pubertal outbreak period -Subgroup B) and another group that would be euthanized at 73  
57 days of life (post-pubertal period – Subgroup A).

58  
59 For the induction of testosterone suppression, the procedure in the experimental group was orchietomy, which is the  
60 removal of both testes and epididymis. Orchietomy is the safest and most effective method for testosterone suppression,  
61 which has been shown to directly affect serum levels of this hormone during puberty [26,28,29]. The animals were subjected  
62 to anesthesia by intraperitoneal injection with 10% Ketamine Hydrochloride (55 mg/Kg of body weight) and 2% Xylazine (5  
63 mg/Kg of body weight). Orchietomy was performed as protocolled by Idris (2012) [24]. The control group received sham  
64 surgery. This surgery reproduced anesthesia, surgical stress, incision, and soft tissue synthesis to adjust for confounding  
65 factors. A single operator previously trained by a veterinarian and who did not participate in the animal allocation process  
66 performed the procedures.

67  
68 The animals were euthanized by isoflurane inhalation. The death of the animal was confirmed after the interruption of  
69 respiratory and muscular movements.

70  
71 The maxillary and mandibular central incisor regions were carefully sectioned and separated for his technical processing,  
72 fixed by immersion in 10% buffered formalin at room temperature for 24 hours. After this period, the pieces were washed in  
73 running water for 4 hours and subjected to the demineralization process, through immersion in a 4.13% EDTA-based  
74 solution (pH 7 – 7.4). After this procedure, the pieces were submitted to routine his technical processing and underwent  
75 dehydration processes in alcohol of increasing concentrations (70%, 80%, and 95% for 45 minutes each and 3 changes of  
76 100% alcohol for 45 minutes each), alcohol/xylene for 30 minutes, diaphanization in xylol (xylol I, II and III for 40 minutes  
77 each) and embedding in paraffin. Blocks containing the tissues were cut longitudinally on a microtome (Leica RM2145;  
78 Leica Microsystems GmbH, Wetzlar, Germany). Semi-serial cuts of 7 $\mu$ m were obtained along the entire length of the piece.  
79 The sections of each group were stained with hematoxylin and eosin (HE) and Picro Sirius Red and analyzed under  
80 conventional optical microscopy, using the Axio Imager.M1 microscope (Carl Zeiss MicroImaging GmbH, Göttingen,  
81 Germany), with an AxioCam MRc5 camera attached. (Carl Zeiss MicroImaging GmbH, Göttingen, Germany, to describe  
82 the characteristics of dental and periodontal tissues. A polarized light filter was inserted into the microscope for picrosirius  
83 images. Images were captured using an objective of up to 40X.

84  
85 A descriptive and quantitative analysis of the histological slides stained with Hematoxylin and Eosin was performed to verify  
86 possible alterations in periodontal tissues and dental structures.

87  
88 For quantitative analysis of collagen synthesis, slices comprising the total length of the lower incisor root were selected.  
89 Images under a 40x objective were obtained in the middle region of the root of the lower teeth, with a band of cementum as  
90 a reference. Quantitative analysis of collagen synthesis was performed using ImageJ software. After recognizing the areas

of high 60 birefringence in the images under polarized light, which correspond to collagen, the software quantified the area of collagen synthesized in pixels and indicated the percentage concerning the total area of the image. As it is compositional data, the percentages of collagen areas in the images were submitted to log10 transformation and, thus, compared by the student's t-test using the IBM SPSS software, and p values < 0.05 were considered statistically significant.

### 3. RESULTS

#### 3.1 Dentin

The dentin of both groups and experimental times were observed with normality patterns with dentinal tubules symmetrically arranged along with the entire structure. In the entire extension of the dentin, a thin non-mineralized region was found, attached to the odontoblasts called pre-dentin.

At the dentin interface of the mandibular incisors, the ORX-1.A group presented a historically smaller mineralization front in terms of quantity and thickness when compared to the Sham-2.A group. However, no differences were observed between the ORX-1.B and Sham-2.B groups (FIGURE 1).

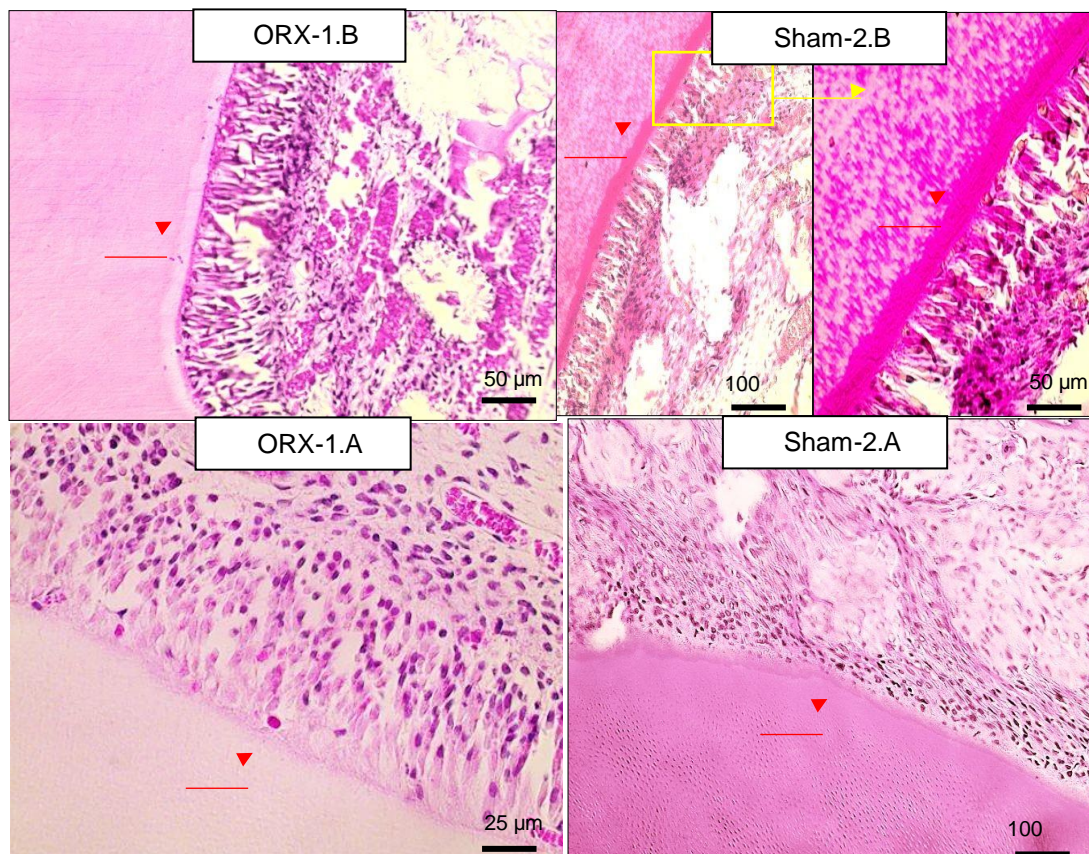
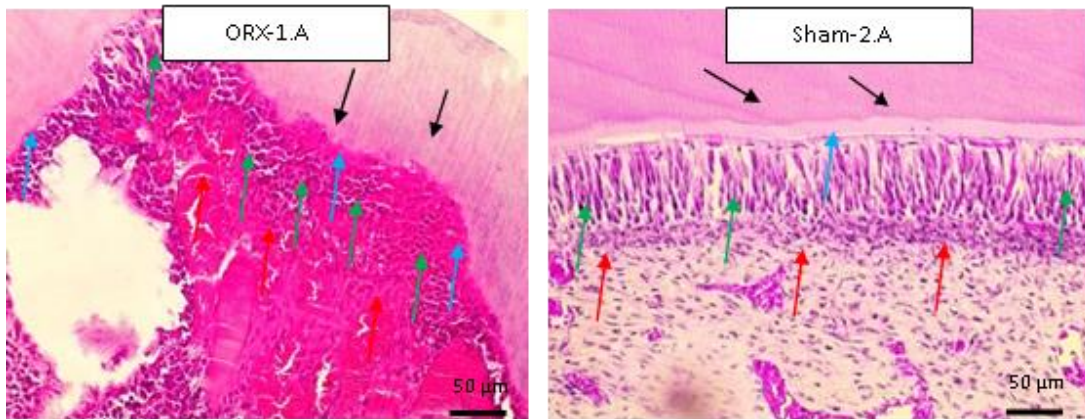


Figure 1 - Photomicrographs of the dentin region of the lower incisors.

The red arrows indicate a layer of non-mineralized matrix present throughout the dentin, adhered to the odontoblasts, and called pre-dentin.

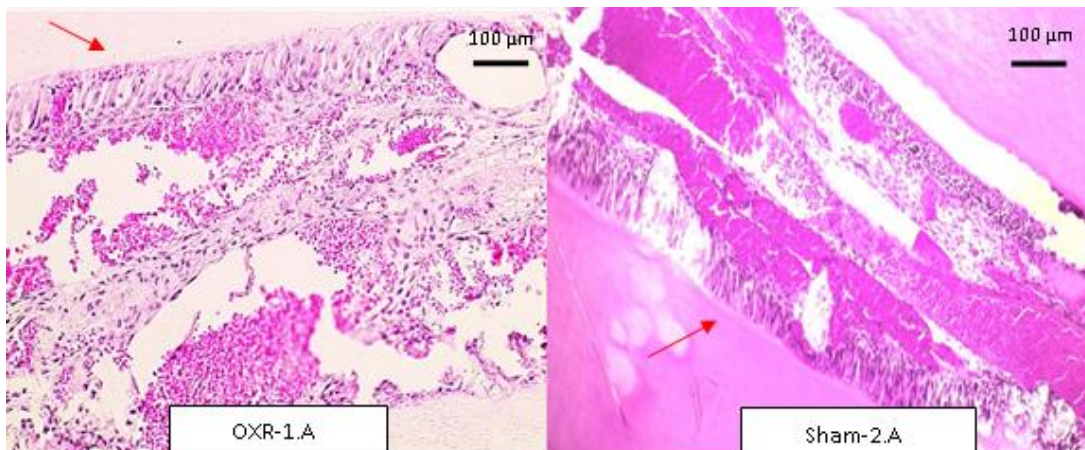
No differences were observed in the dentin structure of the maxillary incisors. Both groups had normal-appearing dentin, dentinal tubules arranged in parallel along the length of the dentin, and numerous odontoblasts arranged along the presenting. Both groups present ameloblasts in large numbers and with normal morphological appearance (FIGURE 2).



118  
119 Figure 2 - Photomicrographs of the dentin region of the maxillary incisors. Longitudinal striations along the entire length of  
120 the dentin (black arrows). A layer of non-mineralized matrix present throughout the dentin, adhered to the differentiated  
121 odontoblasts (green arrows), called pre-dentin (blue arrow) indicating a linear mineralization front. Red arrows indicate  
122 preodontoblasts.

### 123 124 3.2 Pulp

125  
126 The dental pulps of the lower incisors in the ORX-1 group presented a lesser degree of blood vessel formation, but with a  
127 larger caliber. The odontoblasts of the same group were arranged along the entire peripheral part of the pulp with a "pulled"  
128 arrangement, presenting different degrees of maturation and length, little active functional action, with an elongated shape,  
129 basal nucleus, and cytoplasm with few basophils. Differently from the odontoblasts observed in the Sham-2. A group, in  
130 which the odontoblasts presented larger and elongated cells, well-defined and basophilic cytoplasm, and a less stained  
131 nucleus, characterizing cells in an active function stage (FIGURE 3).  
132



133  
134 Figure 3 - Photomicrographs of the pulp region of the lower incisors. Odontoblasts are indicated by the red arrow.  
135

136 The dental pulps of the maxillary central incisors of the ORX-1.B group present a high degree of vascularization, large blood  
137 vessels, characterizing a pulpal hyperemia when compared to the Sham 2.B group. The ORX-1.A group presented less  
138 vascularized dental pulps than the Sham-2. A group, which presented intense vascularization, presence of decalcified  
139 structures in its central region and large and abundant vessels, a large number of odontoblasts close to the periphery,  
140 forming the pre-dentin with an aspect of normality in terms of arrangement and structure (FIGURE 4).  
141

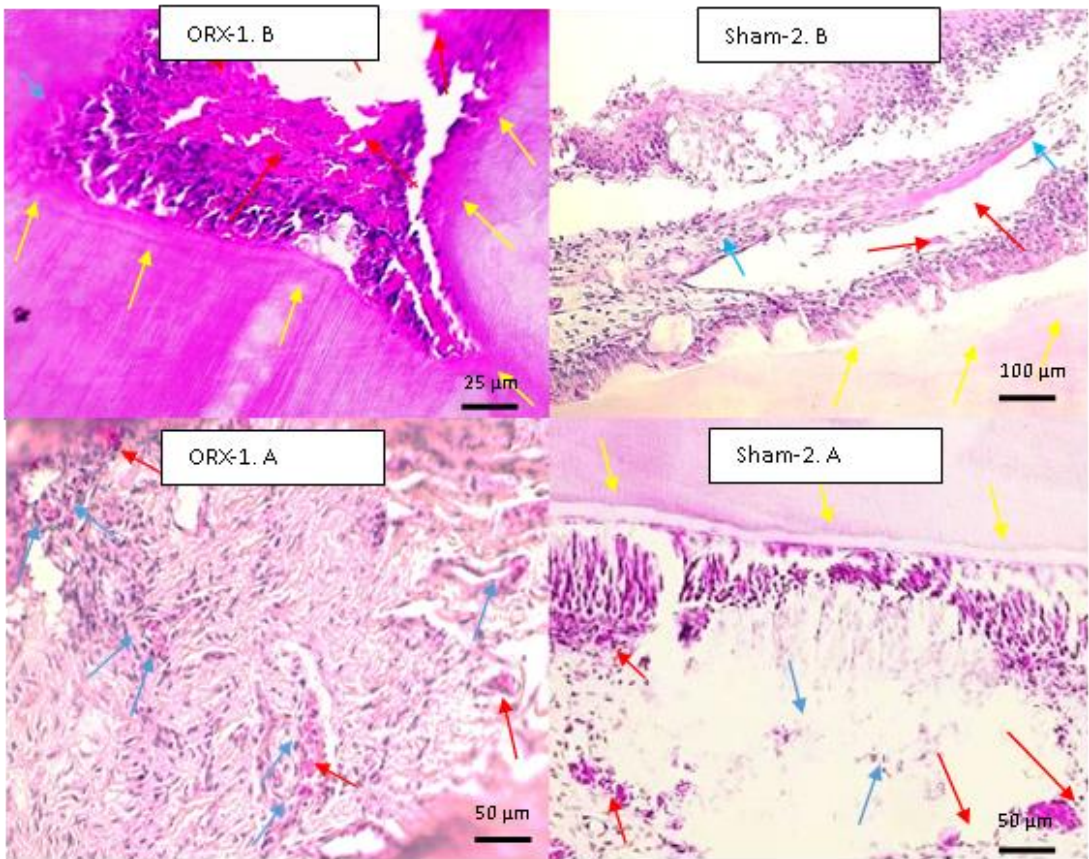
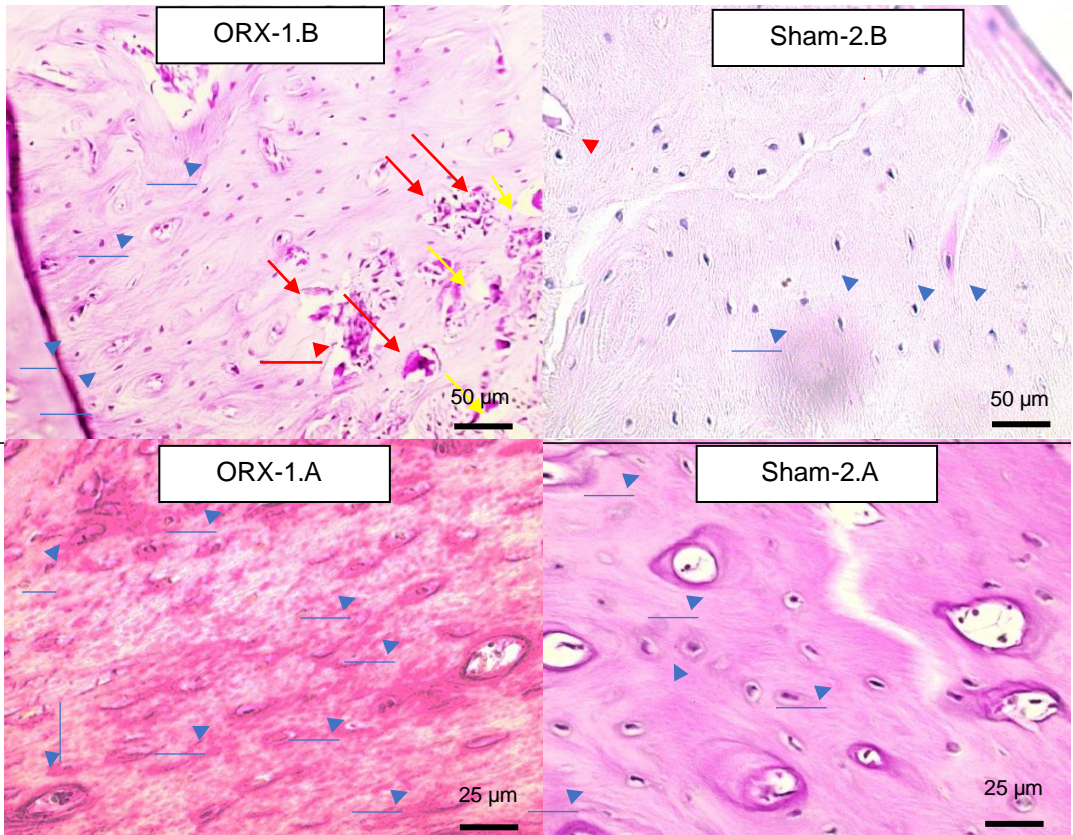


Figure 4 - Photomicrographs of the pulp region of the upper incisors. Red arrows indicate large-caliber vessels and blue arrows indicate smaller-caliber vessels. The yellow arrows indicate the pre-dentin/dentin interface layer.

### 3.3 Alveolar Bone

The alveolar bone of Group ORX-1.B in the lower incisor region showed immature bone formation, with a greater presence of early ossification processes characterized by young bone cells, spongy tissue, large trabeculae, presence of blood vessels, and with thin cortical plates significantly more evident when compared to Sham-2.A and B groups (FIGURE 5).

142  
143  
144  
145  
146  
147  
148  
149  
150  
151



152  
 153 Figure 5 - Photomicrograph of mandibular alveolar bone section. The inferior ligament and globular areas (red arrows) are  
 154 seen in contact with the alveolar bone. The osteocyte shown by the blue arrowhead is parallel.  
 155

156 In the maxillary incisor region, there is a relatively greater number of osteocytes and bone trabeculae in the ossification  
 157 zone of the Sham groups compared to the ORX groups in the analysis of alveolar bone around all the roots. The ORX-1  
 158 groups present large gaps, evident angiogenesis process, neof ormation characteristic of immature bone with  
 159 vascularization present in the bone of the ORX-1 groups greater than that presented in the Sham-2.A and B groups and  
 160 more evident in the ORX-1.B group, when compared to the ORX-1.A group (FIGURE 6).  
 161

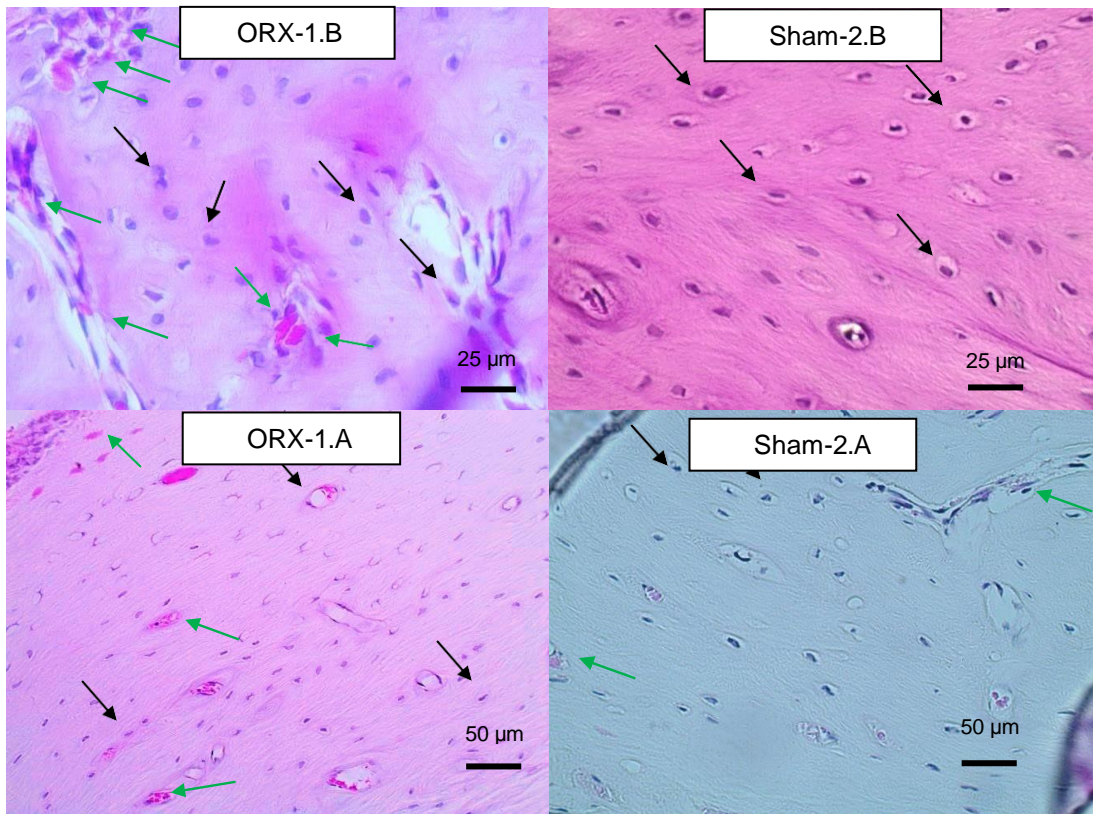
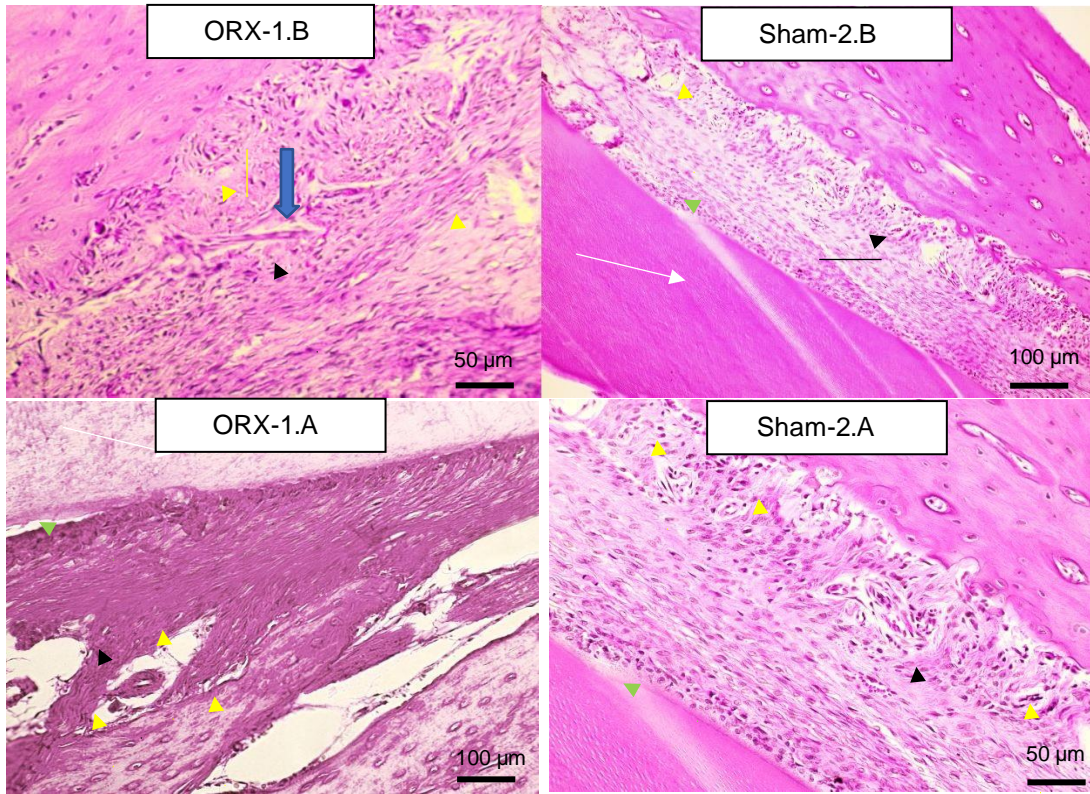


Figure 6 - Photomicrograph of the alveolar bone in the anterior region of the maxilla. Concentric lamellae (white arrows) involving vascularized and innervated channels and parallel lamellae (green arrow) can be observed. The osteocyte shown by the black arrow is parallel.

### 3.4 Periodontal Ligament

The periodontal ligament of the region of the lower incisors of the ORX-1. A Group presents oblique collagen fibers, with normal thickness, considering teeth in masticatory function, in addition to the presence of macrophages and cementoblasts included in an amorphous material, but in smaller quantities when compared to the specimens of the ORX-1.B group. The evidence of periodontal ligament formation, differentiation, and function is more evident when the ORX-1 and Sham-2 groups are compared since in the Sham-2 groups the arrangements, the number of cementoblasts, and the differentiation are more evident and are in line with the normal aspects described in the literature, considering the age of the animals (FIGURE 7).



177 Figure 7 - Photomicrograph of the lower incisor periodontal ligament region. Note the dentin (white arrow), the space that  
 178 would be occupied by enamel and cementum (green arrow). The inferior ligament and globular areas (black arrows) are  
 179 highly vascularized and innervated. There is also a medium-sized vein (wide arrow). Sharpey's fibers, in the communication  
 180 of the ligament with the bone, are indicated by the yellow arrow.

181  
 182 In the maxillary incisor region, the ligament fibers were reduced in number and density in the ORX-1 group when compared  
 183 to the Sham-2 group. Alveolar bone showed horizontally arranged bone trabeculae, with increased medullary spaces and  
 184 formation of new immature trabeculae more evidently in the ORX -1.A group compared to the Sham-2.A and 2.B groups.  
 185 Continuous cemental line and without the presence of inflammatory infiltrate was observed in the Sham- 2.A group when  
 186 compared to the ORX-1.A group, also presents the collagen fibers in normal position and insertion. The Sham- 2.B group  
 187 presented a more intense vascularization in the apex region when compared to the ORX -1.B group (FIGURE 8).  
 188

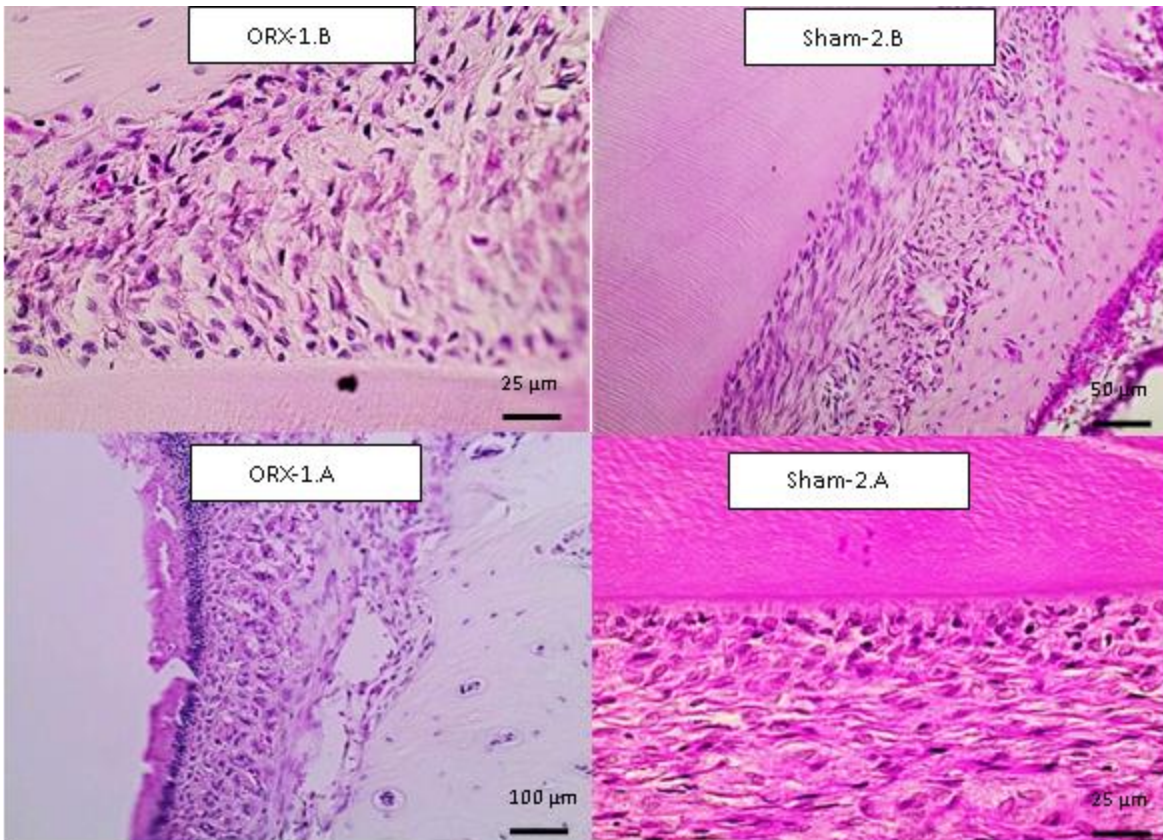


Figure 8 - Photomicrograph of the alveolar process of the anterior region of the maxilla. Ligament fibers were reduced in number and density in ORX when compared to Sham.

The changes that characterize the structural differences between the ORX-1 and Sham-2 groups are described in table 1.

Table 1 - Structural changes in the dentoalveolar tissues of the ORX and Sham groups

Structure	ORX Group	Sham Group
Dentin	Smaller mineralization front in terms of quantity and thickness in 73 days.	Normality patterns.
Pulp	Lesser degree of blood vessel formation, but with a larger caliber. Odontoblasts arranged along the entire peripheral part of the pulp with a "pulled" arrangement, presenting different degrees of maturation and length, little active functional action, with an elongated shape, basal nucleus, and cytoplasm with few basophils.	Normality patterns.
Alveolar Bone	Immature formation, with a greater presence of early ossification processes characterized by young	Normality patterns.

	bone cells, spongy tissue, large trabeculae, presence of blood vessels, and with thin cortical plates significantly more evidente.	
<b>Periodontal Ligament</b>	The ligament fibers were reduced in number and density	Normality patterns.

197

198

199

200

### 3.5 Cuts Stained with Prikrosirius

201

202

In the analysis of collagen quantification in the periodontal ligament, there was no statistically significant difference between the ORX-1 and SHAM-2 groups at any of the experimental times (Table 2) (Figure 9).

203

204

205

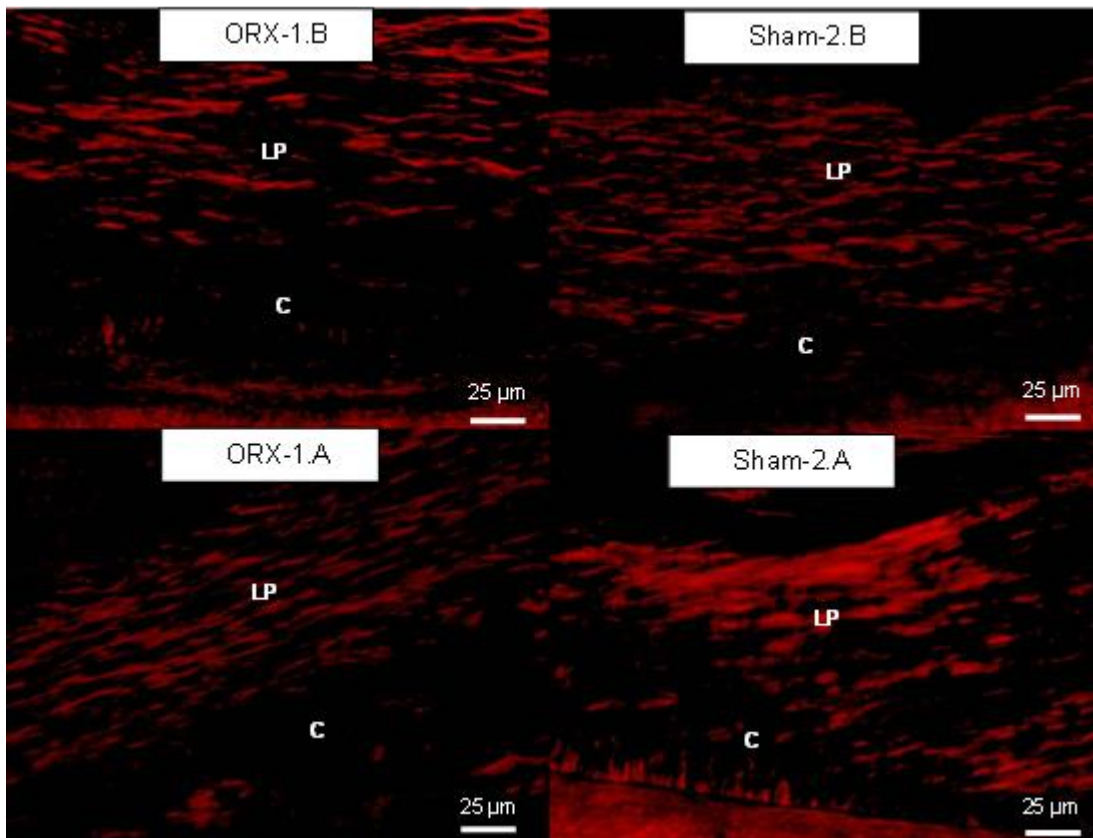
Table 2 – Collagen synthesis comparisons between groups.

	Groups 45 days (SD)		<i>p</i> -value	Groups 73 days (SD)		<i>p</i> -value
	Sham (2.B)	ORX (1.B)		Sham (2.A)	ORX (1.A)	
<b>Collagen area (Log10)</b>	1.32 (0.10)	1.27 (0.31)	0.696	1.43 (0.14)	1.34 (0.22)	0.349

206

Note: SD means standard deviaton.

207



208

Figure 9 – Photomicrograph of the periodontal ligament under polarized light.

209

LP: Periodontal Ligament. C: Cement

210

211

212

## 4.DISCUSSION

213

214

The results of this work allows to confirm the initial hypothesis that testosterone suppression impacts the differentiation and metabolism of cells that form dental structures. The absence of this hormone considerably reduced the formation of tertiary

215

216 dentin of the lower incisors, with impact, more specifically, on the dentin mineralization front. Some studies corroborate with  
217 our results, as follows: Wang et al. (2016) [5] demonstrated that the canines of ovariectomized monkeys had a smaller area  
218 compared to monkeys in the control group; the human studies by Gaethofs et al. (1999) [19] and Roberts et al. (1995) [18]  
219 demonstrate a direct impact of testosterone on adolescent dental age during puberty; regarding mineralization. Reis et al.  
220 (2022) [7] demonstrated that in the endochondral growth area of the mandible there is a delay in the mineralization of the  
221 trabecular bone in ovariectomized animals, a process similar to the mineralization of dentin. To the best of our knowledge,  
222 no study has evaluated the dentin structure of ovariectomized animals in histological sections. We hypothesize that  
223 testosterone directly affects the mineralization process, and reduced levels of this hormone decrease both odontoblast  
224 differentiation and function. This impact can affect tooth size and decrease the quality of dentin, which could be associated  
225 with more susceptible to dental caries and developmental defects of enamel.

226  
227 However, when the maxillary incisors are evaluated, it is noted that there are no differences between the experimental and  
228 control groups. Studies indicate that the morphogenesis of each type of tooth is differently regulated by different growth  
229 factors [30-32]. Thus, it is reasonable to hypothesize that testosterone suppression may affect a specific type or group of  
230 teeth [33-35].

231  
232 During 45 to 73 days, a decrease in the downward trend of new dentin formation and odontoblast differentiation was  
233 observed. During this period, there is also a drop in serum levels of testosterone, GHR, and IGF-1 in healthy rats, which  
234 indicates the animal's hormonal peak and corroborates the hypothesis that testosterone would have a greater impact on  
235 the animal's growth during the period from 40 to 50 days of life, which is the period of peak hormones [36-38].

236  
237 The amount and morphology of ameloblasts were similar between groups regardless of the experimental time. Since  
238 ameloblasts are sensitive to testosterone through Androgen Receptors [9], it was expected that there would be an impact  
239 on the number or morphology of these cells. However, the literature has not yet shown whether testosterone impacts the  
240 differentiation of mesenchymal cells into mature ameloblasts, despite having already demonstrated an impact on the  
241 differentiation of odontoblasts and fibroblasts [8,39]. More studies are needed to identify the possible effects of testosterone  
242 on ameloblasts and, consequently, enamel.

243  
244 The results demonstrate that the dental pulp of ovariectomized animals has vascularization and vasodilation more  
245 accentuated when compared to the control group, characterizing pulpal hyperemia. This hyperemia may be due to the  
246 impact of testosterone on the levels of inflammatory mediators, which modify angiogenesis in the pulp in the face of chemical  
247 or physical aggression [30]. Machado et al. (2021) [16] did not find any pulpal changes when performing the orthodontic  
248 movement in ovariectomized animals compared to animals in the placebo group. However, the different ages of the animals  
249 between the studies may explain this divergence.

250  
251 Testosterone influences the development of rats from pregnancy onwards [40]. However, Verdonck et al., (1998) [26]  
252 demonstrate that testosterone would have an impact on craniofacial growth only between 40 to 50 days, and not during the  
253 animal's childhood. The period between 40 to 50 days corresponds to the peak of testosterone, GH, and IGF-1 in healthy  
254 animals [37-39]. Thus, testosterone suppression would only have an impact at the time of the peak of these hormones, and  
255 orchiectomy before puberty would be the most appropriate time to assess its effects on the development of dentoalveolar  
256 structures, as shown by the results found in our study.

257  
258 The findings in the alveolar bone region agree with Schour (1934) [41], Shapiro and Shklar (1962) [8], Shklar et al. (1967)  
259 [11], Mohamad et al. (2016) [29], Gonçalves et al. (2018) [15], Steffens et al. (2012; 2015) [12-13] and Reis et al. (2022)  
260 [7]. These previous studies demonstrated that there is an impact of testosterone suppression on the proliferation of  
261 precursor cells in the periosteum, which results in a lower number of osteoblasts, osteocytes, and immature bone. However,  
262 at the end of puberty, testosterone ceases to influence this proliferation, suggesting, again, that the hormone has greater  
263 impacts only during the pubertal peak. The impact of testosterone on dentoalveolar development may occur indirectly by  
264 regulating angiogenesis. Angiogenesis is a physiological process that allows for bone turnover and remodeling.  
265 Testosterone has already been used as a therapeutic process in bone lesions in rats and one of its main effects is the  
266 promotion of angiogenesis at the lesion site [41,42]. Angiogenesis is necessary for the renewal and stimulation of  
267 intramembranous growth, in addition to being responsible for the arrival of odontoblasts in the formation zone [43].

268  
269 In the qualitative analysis of the periodontal ligament, the number and density of collagen fibers were smaller. However, in  
270 the quantitative analysis, no statistical differences were observed between the groups at any experimental time. Due to the  
271 influence of testosterone on fibroblasts, it was expected that there would be a direct impact on collagen production, as  
272 demonstrated by Reis et al. (2022) [7] and Arai et al. (2017) [45]. We hypothesize that, in this study, it was possible to  
273 evaluate only the middle portion of the lower incisor root, and not the periodontal ligament as a whole, which can be  
274 considered a limitation of this study.

275

276 The evaluation of the influence of testosterone suppression on dental and periodontal structures makes this study relevant,  
277 as it corroborates the advance in the understanding of the etiology of hormonal deficiencies in dental and periodontal  
278 physiological changes. In addition, this study also suggests that further research in humans be carried out to measure serum  
279 testosterone levels during puberty and correlate with the repair response of dentoalveolar structures. This study also  
280 highlights the importance of serological analysis of the patient before starting orthodontic and periodontal treatment to  
281 identify factors that may be significant during growth and during orthodontic movements, such as low testosterone levels,  
282 which may directly influence the host response to treatment.

283  
284 The unfeasibility of performing statistical analysis of all histological observations is a limitation of this study. However, it is  
285 possible to infer that the analyzed structures are affected by testosterone suppression only in qualitative comparisons  
286 between groups. Another limitation was the absence of serum testosterone measurements, but orchietomy is a procedure  
287 accepted and effective in the literature for the reduction of testosterone levels [45].

#### 288 **4. CONCLUSION**

290 Testosterone suppression induces changes in the differentiation of cells that form the tissues of dental and alveolar  
291 structures, through the incidence of pulp changes, presence of atypical cells in the periodontal ligament and delay in the  
292 neoformation of alveolar bone in rats during puberty. Future studies should assess the impact of testosterone suppression  
293 in humans, as well as whether supplementation has the potential to reverse the changes observed. The results of this study  
294 are relevant to clinical practice in that they awaken health professionals to the need to investigate androgen levels in patients  
295 and identify changes in the development of dentoalveolar structures resulting from dysfunction.

#### 296 **ACKNOWLEDGEMENTS**

298 To CAPES and FAPEMIG for the assistance and granting of scholarships.

#### 300 **AUTHORS' CONTRIBUTIONS**

302 This work was carried out in collaboration among all authors. Authors ECK and CLB initiated and designed the study. Author  
303 MFPM, DSBO, AE, WCRJ and THA developed the project framework, engaged in the gathering of data, and played a pivotal  
304 role in the manuscript preparation. Author CLB and FFF was instrumental in data acquisition, study's statistical analyses,  
305 and made substantial contributions to the manuscript's composition. Authors ECK, and FFF, meticulously reviewed and  
306 edited the manuscript, ensuring their approval of the final version. All authors read and approved the final manuscript.

#### 308 **ETHICAL APPROVAL**

310 The procedures involving animal models were previously subjected to Ethics Committee on the Use of Animals of the  
311 Federal University of Alfenas, which approved this project under protocol number 024/2019. All experiments have been  
312 examined and approved by the appropriate ethics committee.

#### 314 **REFERENCES**

- 316 1. Tunheim EG, Skallevoid HE, Rokaya D. Role of hormones in bone remodeling in the craniofacial complex: A review. *Journal of oral biology and craniofacial research*. 2023;13(2):210-7.
- 317 2. Salhotra A, Shah HN, Levi B, Longaker MT. Mechanisms of bone development and repair. *Nature reviews Molecular cell biology*. 2020;21(11):696-711.
- 318 3. Salonia A, Rastrelli G, Hackett G, Seminara SB, Huhtaniemi IT, Rey RA, et al. Paediatric and adult-onset male hypogonadism. *Nature reviews Disease primers*. 2019;5(1):38.
- 319 4. Reis CLB, Guerra KCC, Ramirez I, Madalena IR, de Almeida ACP, de Oliveira DSB. Does suppression levels of testosterone have an impact in the craniofacial growth? A systematic review in animal studies. *BJD*. 2021;7(7):75630-48.
- 320 5. Wang Q, Kessler MJ, Kensler TB, Dechow PC. The mandibles of castrated male rhesus macaques (*M acaca mulatta*): the effects of orchidectomy on bone and teeth. *American journal of physical anthropology*. 2016;159(1):31-51.
- 321 6. Michelato JR, Ferreira R, Cardoso MV, do Prado Manfredi GG, de Fátima Balderrama I, Stuaní VT. Influence of sex hormones on periodontium homeostasis: a literature review. *Sciences and Dentistry Magazine*. 2022;6(1):33-41.
- 322 7. Reis CLB, Madureira MFP, Cunha CLR, Junior WCR, Araújo TH, Esteves A, et al. Testosterone suppression impacts craniofacial growth structures during puberty: An animal study. *Journal of orofacial orthopedics = Fortschritte der Kieferorthopädie: Organ/official journal Deutsche Gesellschaft für Kieferorthopädie*. 2022.

- 335 8. Shapiro S, Shklar G. The effect of hypophysectomy on the periodontium of the albino rat. *The Journal of*  
336 *Periodontology*. 1962;33(4):364-71.
- 337 9. Jedeon K, Liodice S, Salhi K, Le Normand M, Houari S, Chaloyard J, et al. Androgen receptor involvement in rat  
338 amelogenesis: an additional way for endocrine-disrupting chemicals to affect enamel synthesis. *Endocrinology*.  
339 2016;157(11):4287-96.
- 340 10. Pelegrin ÁF, de Paiva Gonçalves V, de Souza Carvalho J, Spolidorio DMP, Spolidorio LC. Testosterone replacement  
341 relieves ligature-induced periodontitis by mitigating inflammation, increasing pro-resolving markers and promoting  
342 angiogenesis in rats: A preclinical study. *Archives of oral biology*. 2023;146:105605.
- 343 11. Shklar G, Chauncey HH, Shapiro S. The effect of testosterone on the periodontium of normal and hypophysectomized  
344 rats. *The Journal of Periodontology*. 1967;38(3):203-10.
- 345 12. Steffens JP, Coimbra LS, Ramalho-Lucas PD, Rossa Jr C, Spolidorio LC. The effect of supra- and subphysiologic  
346 testosterone levels on ligature-induced bone loss in rats—A radiographic and histologic pilot study. *Journal of*  
347 *periodontology*. 2012;83(11):1432-9.
- 348 13. Steffens JP, Coimbra LS, Rossa Jr C, Kantarci A, Van Dyke TE, Spolidorio LC. Androgen receptors and experimental  
349 bone loss—An in vivo and in vitro study. *Bone*. 2015;81:683-90.
- 350 14. Lee H-K, Choi S-H, Fan D, Jang K-M, Kim M-S, Hwang C-J. Evaluation of characteristics of the craniofacial complex  
351 and dental maturity in girls with central precocious puberty. *The Angle Orthodontist*. 2018;88(5):582-9.
- 352 15. Gonçalves VP, Ortega AAC, Steffens JP, Spolidorio DMP, Rossa C, Spolidorio LC. Long-term testosterone depletion  
353 attenuates inflammatory bone resorption in the ligature-induced periodontal disease model. *Journal of Periodontology*.  
354 2018;89(4):466-75.
- 355 16. Machado MA, Mezzaroba B, de Arruda Amorim JP, Busato MCA, Amorim EMP. Histological analysis of the pulp tissue  
356 of rats with testosterone deficiency submitted to orthodontic tooth movement induced *Análise histológica do tecido*  
357 *pulpar de ratos com deficiência de testosterona submetidos à movimentação dentária ortodôntica induzida*. *Brazilian*  
358 *Journal of Development*. 2021;7(7):65928-95943.
- 359 17. Cordeiro SR, Armada L, Santos RMM, Netto JdNS, de Deus Santos M, Silva WO, et al. Mandibular morphological  
360 analysis of rats with osteoporosis and periradicular lesions. *Research, Society and Development*. 2022;11(17).
- 361 18. Roberts MW, Li SH, Comite F, Hench KD, Pescovitz OH, Cutler GB, Jr., et al. Dental development in precocious  
362 puberty. *Journal of dental research*. 1985;64(8):1084-6.
- 363 19. Gaethofs M, Verdonck A, Carels C, de Zegher F. Delayed dental age in boys with constitutionally delayed puberty. *The*  
364 *European Journal of Orthodontics*. 1999;21(6):711-5.
- 365 20. Smith AJ, Clutton RE, Lilley E, Hansen KEA, Brattelid T. PREPARE: guidelines for planning animal research and  
366 testing. *Laboratory animals*. 2018;52(2):135-41.
- 367 21. Percie du Sert N, Hurst V, Ahluwalia A, Alam S, Avey MT, Baker M, et al. The ARRIVE guidelines 2.0: Updated  
368 guidelines for reporting animal research. *Journal of Cerebral Blood Flow & Metabolism*. 2020;40(9):1769-77.
- 369 22. Miot HA. Sample size in clinical and experimental trials. *Jornal Vascular Brasileiro*. 2011;10:275-8.
- 370 23. Omori MA, Maranon-Vasquez GA, Romualdo PC, Martins Neto EC, Stuani MBS, Matsumoto MAN, et al. Effect of  
371 ovariectomy on maxilla and mandible dimensions of female rats. *Orthodontics & craniofacial research*. 2020;23(3):342-  
372 50.
- 373 24. Idris AI. Ovariectomy/orchidectomy in rodents. *Bone research protocols*. 2012:545-51.
- 374 25. Golledge H, Richardson C. *The UFAW Handbook on the Care and Management of Laboratory and Other Research*  
375 *Animals*: John Wiley & Sons; 2024.
- 376 26. Verdonck A, De Ridder L, Kühn R, Darras V, Carels C, de Zegher F. Effect of testosterone replacement after neonatal  
377 castration on craniofacial growth in rats. *Archives of oral biology*. 1998;43(7):551-7.
- 378 27. Central Michigan University. *Guidelines for Rodent Survival Surgery*. Ann Arbor, 2013.
- 379 28. Verdonck A, De Ridder L, Verbeke G, Bourguignon JP, Carels C, Kühn ER, et al. Comparative effects of neonatal and  
380 prepubertal castration on craniofacial growth in rats. *Archives of oral biology*. 1998;43(11):861-71.
- 381 29. Mohamad NV, Soelaiman IN, Chin KY. A concise review of testosterone and bone health. *Clinical interventions in*  
382 *aging*. 2016;11:1317-24.
- 383 30. Camilleri S, McDonald F. Runx2 and dental development. *European journal of oral sciences*. 2006;114(5):361-73.
- 384 31. Zhang YD, Chen Z, Song YQ, Liu C, Chen YP. Making a tooth: growth factors, transcription factors, and stem cells.  
385 *Cell research*. 2005;15(5):301-16.
- 386 32. Xu X, Jeong L, Han J, Ito Y, Bringas P, Chai Y. Developmental expression of Smad1-7 suggests critical function of  
387 TGF-beta/BMP signaling in regulating epithelial-mesenchymal interaction during tooth morphogenesis. *International*  
388 *Journal of Developmental Biology*. 2003;47(1):31-9.
- 389 33. Marañón-Vásquez GA, Vieira AR, Dos Santos LV, Cunha AS, Weiss SG, Araujo MTdS, et al. FGF10 and FGF13  
390 genetic variation and tooth-size discrepancies. *The Angle Orthodontist*. 2021;91(3):356-62.
- 391 34. Gerber JT, Dos Santos KM, Brum BK, Petinati MFP, Meger MN, da Costa DJ, et al. Odontogenesis-related candidate  
392 genes involved in variations of permanent teeth size. *Clinical Oral Investigations*. 2021;25:4481-94.
- 393 35. Cunha AS, Dos Santos LV, Marañón-Vásquez GA, Kirschnick C, Gerber JT, Stuani MB, et al. Genetic variants in tooth  
394 agenesis-related genes might be also involved in tooth size variations. *Clinical oral investigations*. 2021;25:1307-18.

- 395 36. Edén S. Age-and sex-related differences in episodic growth hormone secretion in the rat. *Endocrinology*.  
396 1979;105(2):555-60.
- 397 37. Handelsman DJ, Spaliviero JA, Scott CD, Baxter RC. Hormonal regulation of the peripubertal surge of insulin-like  
398 growth factor-I in the rat. *Endocrinology*. 1987;120(2):491-6.
- 399 38. Lee V, De Kretser D, Hudson B, Wang C. Variations in serum FSH, LH and testosterone levels in male rats from birth  
400 to sexual maturity. *Reproduction*. 1975;42(1):121-6.
- 401 39. Rodríguez H, Espinoza-Navarro O, Peñafiel C, Escobar E, Silva I, Quiroz P, et al. Stem cells and androgen receptor  
402 in human periapical periodontitis. *International Journal of Morphology*. 2011;29(3):947-53.
- 403 40. Weisz J, Ward IL. Plasma testosterone and progesterone titers of pregnant rats, their male and female fetuses, and  
404 neonatal offspring. *Endocrinology*. 1980;106(1):306-16.
- 405 41. Schour I. The effect of hypophysectomy on the periodontal tissues. *The Journal of Periodontology*. 1934;5(1):15-24
- 406 42. Costa LA, Cantanhede LM, Pereira EM, Crivelini MM, Cuoghi OA, Pereira ALP, et al. Validation of a new experimental  
407 model of extrusive luxation on maxillary molars of rats: a histological study. *Clinical Oral Investigations*. 2018;22:1985-  
408 94.
- 409 43. Van Oirschot BA, Jansen JA, van de Ven CJ, Geven EJ, Gossen JA. Evaluation of collagen membranes coated with  
410 testosterone and alendronate to improve guided bone regeneration in mandibular bone defects in minipigs. *Journal of*  
411 *oral & maxillofacial research*. 2020;11(3).
- 412 44. Birlik M, Babacan H, Cevit R, Gürler B. Effect of sex steroids on bone formation in an orthopedically expanded suture  
413 in rats: An immunohistochemical and computed tomography study. *Journal of orofacial orthopedics = Fortschritte der*  
414 *Kieferorthopadie : Organ/official journal Deutsche Gesellschaft für Kieferorthopadie*. 2016;77(2):94-103.
- 415 45. Arai KY, Hara T, Nagatsuka T, Kudo C, Tsuchiya S, Nomura Y, et al. Postnatal changes and sexual dimorphism in  
416 collagen expression in mouse skin. *PloS one*. 2017;12(5).
- 417
- 418