

Two Prominent Entomopathogenic fungi *Beauveria bassiana* (Balsamo) Vuillemin and *Metarhiziumanisopliae* (Metchnikoff) Sorokin as Natural enemies of Lepidopteran larvae from Rayalaseema region of Andhra Pradesh

ABSTRACT

Roving survey was conducted for searching the natural occurrence of *Beauveria bassiana* and *Metarhiziumanisopliae* during kharif season of 2022 and rabi season of 2022-23 in Kurnool, Kadapa, Chittoor and Anantapuram districts of Andhra Pradesh. The crops surveyed were Groundnut, Maize, Cotton, greengram and blackgram during September to October of kharif season and January to February of rabi season. Among the crops most of the pest population was found in groundnut are *Spodopteralitura*, *Helicoverpaarmigera* and *Aproaeremamodicella* and maize, *Spodopterafrugiperda* which were found at vegetative stage. The fungal infected cadavers of lepidopteran larvae were observed on the soil below the canopy or adhering to the foliage of groundnut and maize crop. The larval cadavers were collected in separate aseptic vials and soil samples were also collected from the surveyed fields. During the survey, it was found that the mean number of infected cadavers varied from 2.6 to 3.2 per square meter in Kurnool district during Sep-Oct of 2022. In Anantapuram district the mean number of cadavers were 1.4-2.2 during Jan-Feb of 2023. In Chittoor district the mean number of cadavers were varied from 2.4-3.6, whereas in Kadapa district it is 0.2 per square meter during Jan-Feb of 2023.

The cadavers were cultured in the lab and based on morphological characters confirmed as *Beauveria bassiana* and *Metarhiziumanisopliae*. The cadavers of *B. bassiana* were found to be high in Kurnool district followed by Chittoor district and least in Kadapa district where as the cadavers of *M. anisopliae* were found to be higher in Chittoor district followed by Anantapuram district and Nilin Kadapa district.

Keywords: Survey, Occurrence, Entomopathogenic *Beauveria bassiana*, *Metarhiziumanisopliae*

fungi,

Comment [Ma1]: Among the crops, the pest population found in groundnut were mostly:

Comment [Ma2]: While that of maize, showed *Spodopterafrugiperda* at the vegetative stage

1. INTRODUCTION

The extensive use of synthetic insecticides led to the development of resistance and resurgence in insect pests in addition to posing problems like pesticide residues and environmental pollution. Eco-

friendly pest management techniques have been gaining much attention since 5 to 6 decades. In the line of biological control of insects, microbial pathogens such as bacteria, fungi, viruses, nematodes, and protozoans are promising agents. Among the various microbial agents, entomopathogenic fungi are considered as most important. Because the fungal pathogens causing the disease to the insects are practically more significant as they are epizootic in nature. Fungi unlike bacteria or viruses, do not require ingestion for infection, so the sucking insects are also targeted either by primary contact or by secondary uptake of the pathogen from sprayed vegetation.

Entomopathogenic fungi are natural enemies of diverse terrestrial arthropods and are important regulators of host populations in terrestrial ecosystems (Hajek, 1997). They naturally occur in insect hosts as infections; they can be collected in the field and grown in the laboratory for the documentation of the fungus. *Beauveria bassiana* have been reported to occur naturally in more than 700 species of insect hosts (Inglis *et al.*, 2001). There are more than 700 species of fungi from 9 genera that infect insects (Charnley, 1989). Entomopathogenic hyphomycetes have great potential as biological control agents against insects and as one component within integrated pest management systems. They are being developed worldwide for the control of many pest of agricultural importance (Ferron, 1985). Entomopathogenic fungi are widely distributed in a wide range of habitats including aquatic, forest, agricultural and pasture habitats (Samson *et al.*, 1998). However, epizootics caused by entomopathogenic fungi in agricultural habitats are more numerous, particularly in temperate regions, than those in other habitats. The occurrence of entomopathogenic fungi in India has been reported by many workers (Ambethgar and Loganathan 1998). These findings suggest that these fungi act as mortality factors in Indian insect populations.

Beauveria bassiana is the asexual form (anamorph) of *Cordyceps bassiana* fungus, which is the sexual reproducing form (teleomorph). It is an important EPF which belongs to the class Deuteromycetes. It consists of several species like *B. bassiana*, *B. amorpha*, *B. brongniartii*, *B. calendonica*, of which *B. bassiana* is widely recognized as an insect pathogen. It causes white muscardine disease in insects like caterpillars, whiteflies, aphids, thrips, grasshoppers, and beetles (Sinha *et al.*, 2016).

Metarhizium anisopliae is a well-studied soil-inhabiting fungus, having a worldwide distribution ranging from the arctic to the tropics (Senthil-Nathan, 2015). It is commonly referred as the green muscardine fungus. The susceptible insect hosts of *Metarhizium* include beetles [coleopteran order, primarily scarabidae family], root weevils, flies, thrips, gnats etc. (Azizoglu *et al.*, 2020). The commercial and indigenous strains of *Metarhizium* fungus were found to be effective against white grubs (Bohara *et al.*, 2018). Also, the pod borer (*Helicoverpa armigera*)

Comment [Ma3]: Not in the list of References

Comment [Ma4]: Not in the list of references

in chickpeas was effectively controlled by using *M. anisopliae* in a study conducted by Rijal and Godfrey (2018).

Comment [Ma5]: Citation not in the list of references

The occurrence of entomopathogenic fungi in India has been reported by many workers. However, the abundance and biodiversity of these fungi is less known, which can be explored and documented with the help of authentic and accurate techniques, therefore a survey was carried out in various places of Rayalaseema zone in Andhra Pradesh to isolate and identify the indigenous fungal isolates.

2. MATERIALS AND

METHODS Survey for collection of

fungi:

A Roving survey was conducted for the collection of *Beauveria bassiana* and *Metarhizium anisopliae* on insect pests in field crops of four Groundnut growing districts in Rayalaseema region of Andhra Pradesh. The survey was conducted **Two** times i.e during September-October, *kharif* 2022 and January-February, *rabi* 2022-2023. The districts selected in Rayalaseema region of Andhra Pradesh were Kurnool, Kadapa, Chittoor and Anantapuramu. In the selected districts, two Mandals were selected and two villages were selected from each mandal.

Comment [Ma6]: two, not Two.

From Kurnool district, Pathikonda (Chakaralla and Pothiralla village) and Devanakonda (karivemula and Kapatralla village) mandals were selected. From Anantapuramu district, Gooty (Thondavada and ubicherla village) and Bukkarayasamudram (Reddipalle and Rekulakunta village) mandals were selected. From Chittoor district, Gangavaram (Dandapalle and Gangavaram village) and palamane r (Gundlapalle and Jagamarla village) mandals were selected. From Kadapa district, Chintakommadinne (Utukur and Thadiguntla village) and khajipet (Bhumayapalle and Midutur Village) mandals were selected. In each village, the major field crops available in the season were observed for *Beauveria bassiana* and *Metarhizium anisopliae* infected cadavers of insect pests. The crops surveyed were groundnut, Maize, Cotton, Blackgram, Sorghum. Among all the crops observed most of the pest population was observed in Groundnut and maize crops may be due to the good crop canopy that maintains favourable microclimate to EPF. Pests observed during survey were Tobacco caterpillar, *Spodoptera litura*, American boll worm, *Helicoverpa armigera* and Groundnut leaf miner, *Aproaerema modicella* in groundnut crop and Fall army worm, *Spodoptera frugiperda* in maize crop.

In Chakaralla and Pothiralla village of Kurnool district most of the pest population found was *S. litura* in Chakaralla village and *Aproaerema modicella* in Pothiralla village. most of the cadavers were found to be infected with *Beauveria bassiana* and few were infected with *Metarhizium* Sp. in groundnut crop as the most of the farmers follow groundnut cropping system in these villages. From Anantapuramu district Thondapadu, Tadiguntla and Rekulakunta villages *S. litura* population was found to be higher. The cadavers were found infected with *Metarhizium* Sp. and few were found to be infected with *B. bassiana*. In these villages most of

the fields were rainfed and groundnut cropping system is followed. In Chittoor district, Dandapalle and Gangavaram villages, crops found were groundnut and cabbage. The pests observed were *H. armigera* and

UNDER PEER REVIEW

S. litura in groundnut crop. Similarly in Gundlapalle village of Palamaner, higher pest population of *H. armigera* and *S. litura* was found. Most of the cadavers were found to be infected with *M. anisopliae* and few were found to be infected with *B. bassiana*. From Kadapa district in village utukur village, the groundnut fields were found to be less infested and only *S. litura* was observed. The cadavers found were very less and infection is seen only from *B. bassiana*.

The soil type observed was mostly black soil in Kurnool and Kadapa districts where as in Anantapuramu district, the soil type was both red soil and black soil and In case of Chittoor district the soil type was sandy loam. The sampling fields were selected randomly in the village. From the fields, the dead cadavers adhered to the leaves, any plant part with external signs of mycosis were collected with the help of fine brush into sterilized glass/plastic vials and plastic petriplates. After collection of entomopathogenic fungal cadavers into the sterilized vials and the containers were wrapped with parafilm and labelled with the details of date of collection, insect cadaver, crop, village, district and zone. The insect cadavers per square meter were counted at five places randomly in the field.

Isolation of test fungi:

From Entomopathogenic fungal cadavers collected during survey, the fungus was inoculated onto the SMAY medium in petriplates for confirmation of Entomopathogenic fungi. The cultures were studied morphologically under research microscope and based on the morphological characters they were confirmed as *B. bassiana* and *M. anisopliae*. After confirmation, pure cultures of isolates were and maintained in the laboratory.

3. RESULTS AND DISCUSSION:

The pest population observed in Groundnut and maize crops are *Spodopteralitura*, *Helicoverpa armigera* and *Proreumamodicella* in Groundnut crop and *Spodoptera frugiperda* in maize crop. The mummified lepidopteran larvae of EPF were observed in fields of Groundnut and maize which were either adhering to leaves or present on soil. Most of the cadavers were found adhering to leaves. Some cadavers were with white fungal mat covered on body except the head portion and some covered with light green spore mass. Mostly later instars of *Spodopteralitura*, *Helicoverpa armigera*, *Spodoptera frugiperda* and *Proreumamodicella* were seen as cadavers. While collecting the cadavers, white or green spore mass was also observed on leaves or plant parts.

Mostly the cadavers were observed in Groundnut crop maybe due to canopy coverage and build up of microclimate within the crop field that favours the EPF present in the soil.

Comment [Ma7]: Groundnut

Incidence of Entomopathogenic fungi infected insect larvae in different districts of Rayalaseema region

Kurnool District:

The pests observed during survey were *Spodopteralitura*, *Helicoverpa armigera* and *Aproaemamodice* in the fields of Groundnut. EPF cadavers of all three caterpillars were found in groundnut crop in Chakaralla, Pothiralla, Karivemula and Kapatralla of Kurnool district and mean number of cadavers per square meter during Sep 2022 were 3.2, 2.4, 2.2 and 0.0 respectively. In Kapatralla village no insect cadavers were found, it is mostly may be because of absence of fungal inoculum in the soil as the weather parameters are not favourable in comparison with the other villages. During Sep 2022 the average maximum, minimum temperatures recorded in Kurnool district were 33°C and 22°C. The average morning and evening relative humidities recorded were 37% and 96% respectively. Rainfall of 80 mm was received during the period. During Jan 2023 temperatures recorded were 34°C and 14°C. The average relative humidities recorded were 14% and 89%. Rainfall was not received during the period. Most of the cadavers collected from this district are found to be infected with *B. Bassiana* and few cadavers were found to be infected with *M. anisopliae*.

Anantapuramu District:

During second fortnight of September 2022, most of the pest population observed was *Spodopteralitura*. EPF cadavers of *Spodopteralitura* were recorded in groundnut crop in Tondapadu and Ubicherla villages of Gooty mandal in Anantapuramu district. The mean number of cadavers found were 2.2 and 1.4 per square meter respectively. During the survey period the average maximum, minimum temperatures recorded in Anantapuramu district were 36°C and 22°C. The average morning and evening relative humidities recorded were 37% and 98% respectively. Rainfall of 10 mm was received during the period. During Feb 2023 temperatures recorded were 32°C and 12°C. The average relative humidities recorded were 23% and 96%. Rainfall was not received during the period. Most of the cadavers collected from this district were found to be infected with *M. anisopliae* and few cadavers were infected with *B. bassiana*.

Chittoor District:

The pests observed during the survey were *Spodopteralitura* and *Helicoverpa armigera* in Groundnut and *Spodoptera frugiperda* in maize crop. EPF cadavers of *Spodopteralitura* and *Helicoverpa armigera* and *Spodoptera frugiperda* were observed in groundnut at Dandapalle

mandal and the mean numbers of cadavers found were 3.6 per square meter and in Gangavaram village of Palamaner mandal the mean number of cadavers found were 2.7 per square meter during the survey conducted in second fortnight of October, 2022. The average maximum, minimum temperatures recorded in Chittoor district were 30°C and 22°C.

The average morning and evening relative humidities recorded were 51% and 91% respectively. Rainfall of 118.2 mm was received during the period. During Feb 2023 temperatures recorded were 32°C and 16°C. The average relative humidities recorded were 45% and 90%. Rainfall was not received during the period. Most of the cadavers collected from this district were found to be infected with *M. anisopliae* and few cadavers were infected with *B. bassiana*.

Kadapa District:

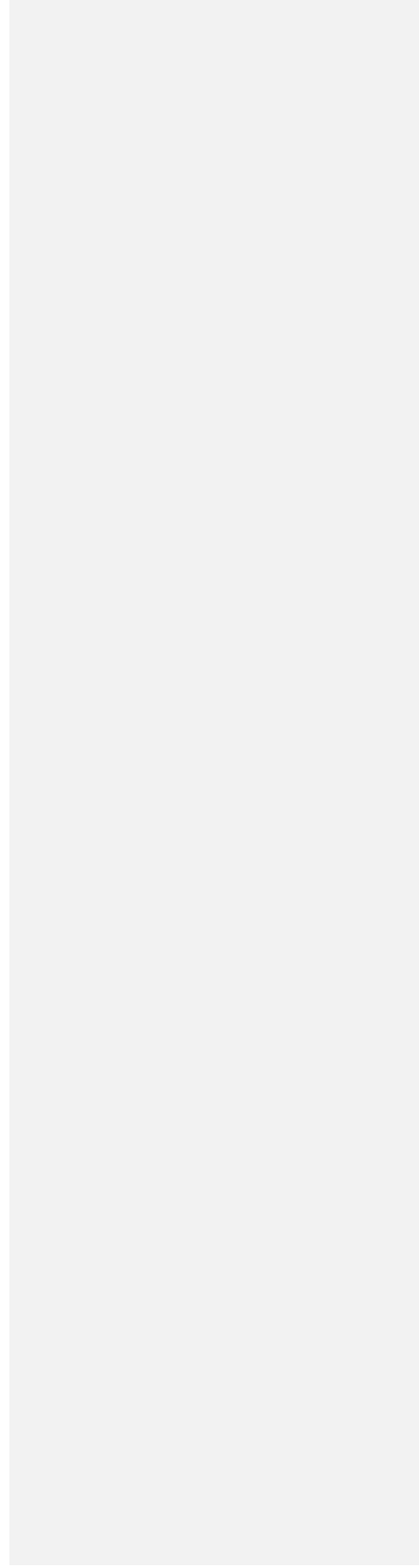
In this District EPF cadavers were found on *Spodopteralitura* and the infected cadavers were seen on groundnut leaves and mean number of cadavers per square meter were 0.2 in Utukurmandal. In other surveyed villages the fields were observed with less pest population, may be due to the use of insecticides. The average maximum, minimum temperatures recorded during Oct 2022 in Kadapa district were 30°C and 22°C. The average morning and evening relative humidities recorded were 46% and 75% respectively. Rainfall of 56.78 mm was received during the period. During Feb 2023 temperatures recorded were 29°C and 14°C. The average relative humidities recorded were 40% and 89%. Rainfall was not received during the period. The cadavers found were very less and infection is seen only from *B. bassiana*.

The findings of the present study reveal that considerably the higher density of EPF infected lepidopteran larvae of 3.6 per square meter was found in Dandapalle village of Chittoor district and 3.2 per square meter in Chakaralla village of Kurnool district might be due to higher rainfall received during Sep 2022 with an amount of 80mm in Kurnool district and 118.2mm in Chittoor district that creates good relative humidity of 90-95% and the temperatures are also found to be favourable in these districts. In this zone the usage of synthetic pesticides and fertilizers is very less which creates opportunity for the survival of soil fauna including the soil born microorganisms like EPF.

The lower incidence of EPF infected lepidopteran larvae of 0.2 per square meter in Kadapa district might be due to lower rainfall of 56mm and relatively less humidity of 40-60% which are unfavourable conditions for infection that generally create conditions that are not suitable for soil microbes like EPF. Usually under these conditions the soil inoculum will be generally low which is the other reason for lower incidence.

The results of present studies were similar to Nidhi *et al.* (2018) conducted a survey in the Kumaun and Garhwal divisions of Uttarakhand for both infected cadavers and soil samples. Isolation of 52 soil samples showed six entomopathogenic fungi. *B. bassiana* infected cadavers were collected among which mycosis was greatly pronounced in *Trichoplusia orichalcea* with *N. rileyi*, followed by *B. bassiana*. Similarly, Dhare *et al.* (2019) isolated 13 fungal isolates, having characteristics similar to *B. bassiana* from infected cadavers and soil samples collected from the fields of different crops in Punjab.

UNDER PEER REVIEW



Abarna and Vishnupriya (2022) reported that Natural incidence of EPF was high during the month of December. Twelve EPF isolates were isolated from the mycosed *Tetranychus urticae* cadavers and found to be infected with *Beauveria bassiana* and Cocoka et al. (2023) surveyed three localities in eastern DR Congo and collected infected cadavers of Fall army worm and earwigs and based on the morphology they confirmed it as *B. bassiana*.

The results are also supported by Manjula et al. (2019), who found that 100 per cent Groundnut leaf miner population was mycosed during II FN October and I FN September, 2018. The blotches of leaf miner looked milky white with cadavers protruding from the blotch. The fungus was inoculated and identified as *Metarhizium anisopliae*.

Velavan et al. (2021) collected insect cadavers and soil samples from different forest types, viz., wet evergreen, moist deciduous, dry deciduous and scrub type in South India and isolated 27 isolates of *Metarhizium anisopliae* which were confirmed based on morphological and molecular studies.

The present results are in line with Ayele et al. (2020), who isolated twenty five *Metarhizium* isolates from different soil types, using the great wax moth, *Galleria mellonella* baiting method. Likewise, Elham et al. (2018) used the insect baiting approach utilising mealworm larvae, *Tenebrio molitor*, to isolate EPF from soil samples. The only EPF species detected in soil samples from Taman Tropika Kenyir and BRIS soil of Marang was *Metarhizium anisopliae*.

Korosi et al. (2019) conducted a survey to isolate and identify the entomopathogenic fungi from soil. Out of 240 soil samples taken from eight different vineyard sites, 144 samples (60%) were positive for the presence of entomopathogenic fungi in the genera of *Beauveria* or *Metarhizium*, with 20 samples (8%) containing both.

As per the current study the maximum Mean no. of cadavers/m² area was observed in the month of September and January. This clearly indicates that moderate temperature along with high humidity is necessary for the growth and development of EPF and to cause natural infection to insects.

Naming of isolates:

The isolates were named based on their area of collection. A total of six isolates of *B. bassiana* (Fig. 1) and six isolates of *M. anisopliae* (Fig. 2) were pure cultured, named and maintained for further research.

Beauveria bassiana isolate Dpl.Ctr

Beauveria bassiana isolate Plmr.Ctr

Beauveria bassiana isolate Pkd.Knl

Beauveria bassiana isolate Dvk.Knl

Beauveriabassiana isolate Gty.Atp

Beauveriabassiana isolate Utkr.Kdp

Metarhiziumanisopliae isolate Dpl.Ctr

Metarhiziumanisopliae isolate

plmr.Ctr *Metarhiziumanisopliae* isolate Gty.Atp

Metarhiziumanisopliae isolate Rkl.Atp

Metarhiziumanisopliae isolate Pkd.Knl

Metarhiziumanisopliae isolate Dvk.Knl

Table.1 Crops surveyed and the incidence of *Beauveriabassiana* and *Metarhiziumanisopliae* in different groundnut growing regions in Rayalaseema regions of Andhra Pradesh

S.no	District	Village	Location	Crop	Cadavers noticed	Meanno.of cadavers/s q.m
1.	Kurnool	Chakaralla	15.3889°N, 77.5562° E	Groundnut	<i>Spodoptera litura</i> , <i>Aproarema modicella</i> .	3.2
		Pothiralla	15.3964°N, 77.5008° E	Groundnut	<i>Spodoptera litura</i>	2.4
		Karivemula	15.5946°N, 77.6004° E	Groundnut, Cotton	<i>Helicoverpa armigera</i>	2.2
		Kapatralla	15.5936°N, 77.6316° E	Groundnut	Nil	
2.	Anantapuramu	Thondavada	13.5935°N, 79.3423° E	Groundnut	<i>Spodoptera litura</i>	2.2
		Ubicherla	15.1851°N, 77.6894° E	Groundnut	<i>Spodoptera litura</i>	1.4
		Reddipalle	14.0927°N,	Groundnut	Nil	

			79.2278° E			
		Rekulakunta	14.6938°N, 77.6695° E	Groundnut	<i>Spodoptera litura</i>	1.0
3.	Chittoor	Dandapalle	13.2392°N, 78.6966° E	Groundnut	<i>Aproaema modicella</i>	3.6
		Gangavaram	16.7339°N, 82.0475° E	Groundnut, cabbage	<i>Helicoverpa armigera</i>	2.4
		Gundlapalle	13.4477°N, 79.0363° E	Groundnut	<i>Spodoptera litura</i>	2.7
		Jagamarla	13.2215°N, 78.8248° E	Groundnut	Nil	
4.	Kadapa	Utukur	14.4538°N, 78.8123° E	Groundnut, Blackgram	<i>Spodoptera litura</i>	0.2
		Thadigotla	14.4950°N, 78.7639° E	Groundnut	Nil	
		Bhumayapal Le	14.6921°N, 78.7306° E	Groundnut, Maize	Nil	
		Miduturu	15.7709°N, 78.2889° E	Groundnut	Nil	

UNDER PEER REVIEW

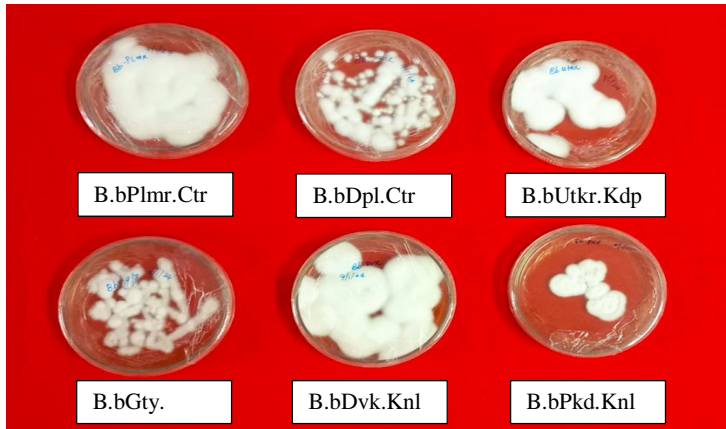


Fig.1 Isolates of *Beauveria bassiana*

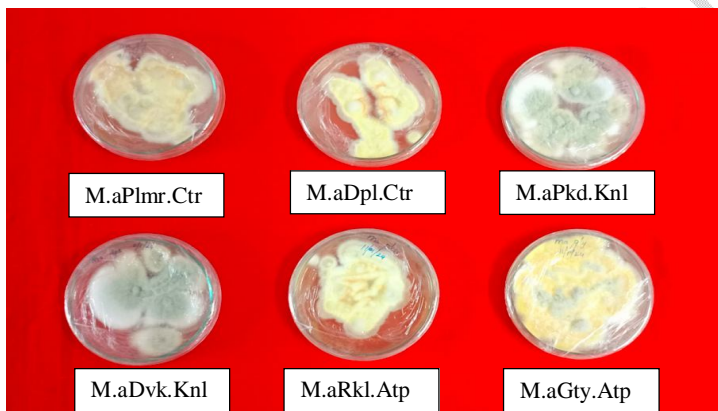
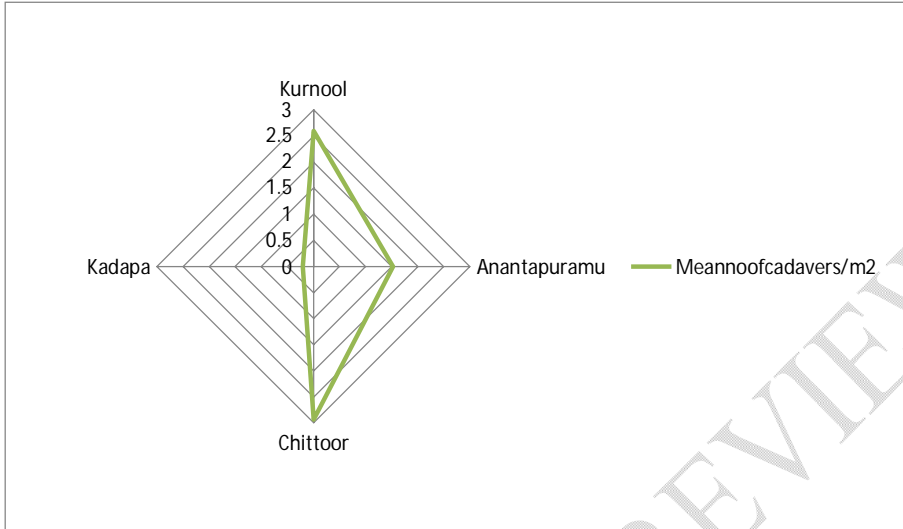


Fig.2 Isolates of *Metarhizium anisopliae*

Fig.3 Graphical representation of incidence of *Beauveria bassiana* and *Metarhizium anisopliae* in Rayalaseema zone of Andhra Pradesh



1. CONCLUSIONS

The findings of the present study reveal that considerably the higher density of Entomopathogenic fungal infected lepidopteran larvae of 3.6 per square meter was found in Chittoor district and 3.2 per square meter in Kurnool district and the lower incidence of EPF infected lepidopteran larvae of 0.2 per square meter was found in Kadapa district. In groundnut and maize crops the major lepidopteran larvae can be suppressed by utilizing these fungi through sole application or by incorporating as a component in IPM strategies.

REFERENCES:

AbarnaVP, VishnupriyaR. DNA barcoding reveals the natural occurrence of *Beauveria bassiana* (Balsamo) Vuillemin in two-spotted spider mite, *Tetranychus urticae* Koch in Bhendi [*Abelmoschus esculentus* (L.) Moench] ecosystem in Coimbatore district of Tamil Nadu. *Egyptian Journal of Biological Pest Control*. 2022; 32:128.

Ambethgar V, Loganathan M. Incidence of green muscardine fungus, *Nomuraearileyi* (Farlow) Samson on *Spodopteralitura* (Fab.) in soybean, *Glycine max* (L.) Merrill from Tamil Nadu (India). *Journal of Entomological Research*. 1998; 22:195-196.

Ayele BA, Muleta D, Venegas J, Assefa F. Morphological, molecular, and pathogenicity characteristics of native isolates of *Metarhiziumanisopliae* against the tomato leaf miner, *Tuta absoluta* (Meyrick 1917) (Lepidoptera: Gelechiidae) in Ethiopia. *Egyptian Journal of Biological Pest Control*. 2020; 30:59-65.

Charnley AK. Mycoinsecticides: present use and future prospects. In: *Progress and Prospects in Insect Control*. BCPC Monograph. 1989; 43:165-181.

Cokola MC, Ben Fekih I, Bisimwa EB. Natural occurrence of *Beauveria bassiana* (Ascomycota: Hypocreales) infecting *Spodoptera frugiperda* (J. E. Smith) (Lepidoptera: Noctuidae) and earwig in eastern DR Congo. *Egyptian Journal of Biological Pest Control*. 2023; 33:54.

Dhar S, Jindal V, Jariyal M, Gupta VK. Molecular characterization of new isolates of the entomopathogenic fungus *Beauveria bassiana* and their efficacy against the tobacco caterpillar, *Spodopteralitura* (Fabricius) (Lepidoptera: Noctuidae). *Egyptian Journal of Biological Pest Control*. 2019; 29:8.

Elham MSH, Pong KK, Lee GEL, Azmi WA. Occurrence of Entomopathogenic Fungus, *Metarhiziumanisopliae* isolated from Island, BRIS and coastal soils of Terengganu, Malaysia. *Journal of Sustainability Science and Management*. 2018; 13(5):179-189.

Ferron P. Fungal control. In *Comprehensive Insect Physiology, Biochemistry and Pharmacology*. Pergamon Press, New York. 1985; 12:313-346.

Freed S, Saleem MA, Khan MB, Naeem B. Prevalence and effectiveness of *Metarhiziumanisopliae* against *Spodoptera exigua* (Lepidoptera: Noctuidae) in Southern Punjab, Pakistan. *Pakistan Journal of Zoology*. 2012; 44(3):753-758.

Hajek AE. Ecology of terrestrial fungal entomopathogens. *Advances in Microbial Ecology*. 1997; 15:193-249.

Inglis GD, Goettel MS, Butt TM, Strasser H. Use of hyphomycetous fungi for managing insect pests. *Fungi as Biocontrol Agents. Progress, Problems and Potential*. CABI Publishing.

2001;23-69.

Korosi GA, Wilson BAL, Powell KS, Ash GJ, Reineke A, Savocchia S. Occurrence and diversity of entomopathogenic fungi (*Beauveria* spp. and *Metarhizium* spp.) in Australian vineyard soils. *Journal of Invertebrate Pathology*. 2019; 4(5):16-23.

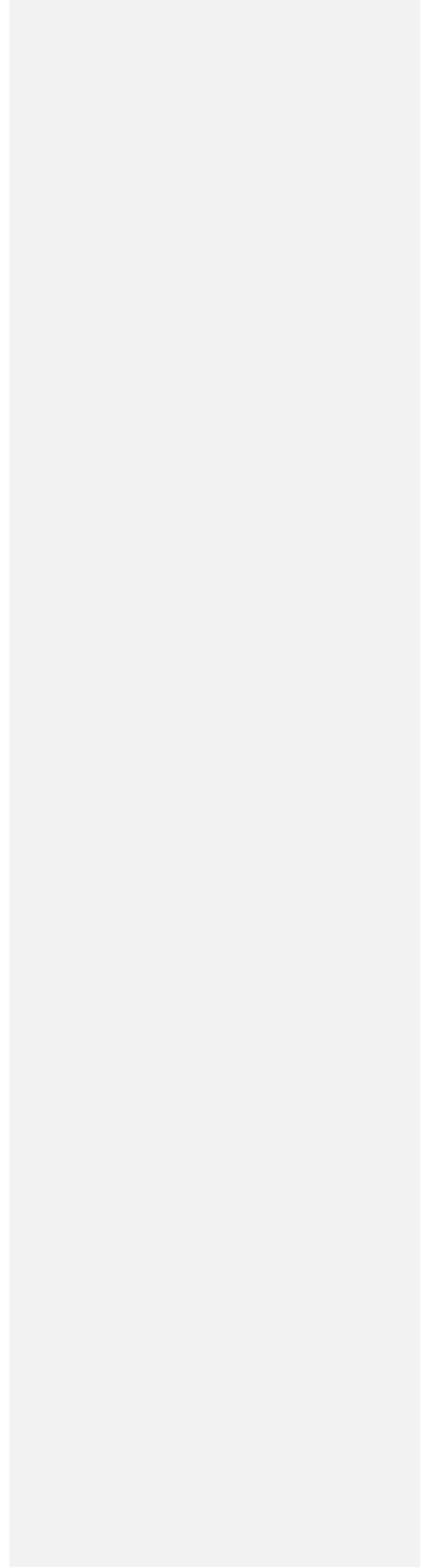
Manjula K, Saheb PY, Sudheer JM, Rao RA. First Record on Occurrence of Epizootics of *Metarhizium anisopliae* (Metchnikoff) Sorokin on Groundnut Leaf Miner, *Aproaemamodicea* (Deventer). *International Journal of Current Research*. 2019; 11(4):2715-2717.

Nidhi K, Gaur N, Pandey R. A survey of the local isolates of entomopathogenic fungi in Uttarakhand region. *Journal of Entomology and Zoology Studies*. 2018; 6(1):1725-1730.

Samson RA, Evans HC, Latge JP. *Atlas of Entomopathogenic Fungi*. Springer-Verlag, New York. 1988; 187

Velavan V, Rangeswaran R, Sivakumar G. Occurrence of *Metarhizium* spp. isolated from forest samples in South India and their potential in biological control of banana stem weevil *Odoiporus longicollis* Oliver. *Egyptian Journal of Biological Pest Control*. 2021; 31:131 (2021).

UNDER PEER REVIEW



UNDER PEER REVIEW

