

Varietal differences in seed germination and seedling survival of bitter gourd(*Momordicacharantia* L.) genotypes

ABSTRACT

Bittergourd(*Momordicacharantia* L.) is a multipurpose vegetable renowned for its distinct bitter taste, nutritional richness and potential health benefits. Fourteen different bitter gourd genotypes were evaluated at Department of Horticulture, University of agricultural sciences, GKVK, Bengaluru. To know the variations with respect to germination percentage, days taken for germination and survival percentage. The seeds of these genotypes were pre-soaked for 12 hrs and sown in the pro trays. The maximum germination percentage was seen in the genotype Pusa Purvi (91.67) followed by Konkan Karali (88.33%) and Konkan Tara (88.00%). The minimum days taken for germination were recorded in Hir kani (8.00 days), Punjab 14 (8.50 days), Pusa Rasdar (9.00 days) and Konkan Tara (9.00 days) making them favourable for faster germination. The maximum survival percentage was recorded in Hir kani (97.30) followed by Pusa Purvi (97.81) and Phule Green Gold (97.31) while CO 1 exhibited lowest germination (40.33%) and survival (82.12%) percentage. These findings underscore the importance of genotype selection in optimizing germination and survival rates, which are critical for achieving high crop yields and robust plant growth.

Keywords: Bitter gourd; Genotypes; Germination Percentage

1. INTRODUCTION

Bitter gourd (*Momordicacharantia* L.) known by various names such as balsam pear, bitter cucumber, or bitter melon, is a member of the cucurbitaceous vegetable family Cucurbitaceae. The genus *Momordica* encompasses several other species, including *M. balsamina*, *M. cochinchinesis*, *M. dioca*, *M. denudate*, *M. macrocarpa*, *M. subangulata*, and *M. tuberosa*. Bitter gourd is diploid, having chromosome number $2n = 2X = 22$, and has its origin in the Indo-Burma region. Bitter gourd is cultivated primarily for its bitter and tender fruits, which are renowned for their rich nutritional compositions, vitamin A and C (Sorifa, 2018).

The characteristic bitter taste of bitter melon is attributed to specific compounds, including the cucurbitacin-like alkaloid momordicine and triterpene glycosides such as momordicoside K and L (Jeffrey, 1980 and Okabe *et al.*, 1982). Beyond its culinary appeal, bitter melon has garnered attention for its potential health benefits, particularly in managing diabetes. Studies have revealed the presence of a hypoglycemic compound named 'charantin' in bitter melon, suggesting its efficacy in regulating blood sugar levels (Yehe *et al.*, 2003). Studies have shown that bitter melon has anti-carcinogenic properties and can be used as a cytotoxic agent against many types of cancer (Grover and Yadav, 2004).

Seeds represent invaluable assets in global agriculture, crucially influencing crop establishment and productivity based on their physiological quality (Begatali *et al.*, 2019; Strucker *et al.*, 2019). High-quality seeds are proficient at producing uniform seedlings that

exhibit robust growth potential and effective resource utilization within their environment (Caverzan et al., 2018). Conversely, seeds of lower quality impede seedling emergence, leading to uneven crop establishment in fields and ultimately reducing yields (Abati et al., 2017; Ebone et al., 2020).

Seed quality encompasses genetic, physical, physiological attributes, and seed health. Physiological quality pertains to a seed's capacity to germinate, emerge from the soil, and develop into a robust seedling, particularly under the challenging conditions often encountered in smallholder farmers' fields. Maintaining high physiological quality is crucial for achieving an ideal and consistent plant density while minimizing seeding rates.

Germination is a pivotal phase in the lifecycle of both weeds and crops, significantly influencing population dynamics and having substantial practical impacts (Huang et al., 2003). Successful germination is essential for species survival, making a low germination rate a critical issue (Yang et al., 2008). Consistent and quick germination is crucial for enhancing yield, quality, and profitability for vegetable growers (Jamil et al., 2016). However, in bitter gourd, the presence of a thick seed coat causes water absorption to occur slowly, leading to delayed germination and poor field emergence, even when seeds have high germination ability (Asna et al., 2020).

Seed quality encompasses genetic, physical, physiological attributes, and seed health. Physiological quality pertains to a seed's capacity to germinate, emerge from the soil, and develop into a robust seedling, particularly under the challenging conditions often encountered in smallholder farmers' fields. Maintaining high physiological quality is crucial for achieving an ideal and consistent plant density while minimizing seeding rates.

Environmental conditions during crop growth, harvesting, and storage significantly impact the physiological quality of seeds (GhassemiGolezani and Mazloomi-Oskooyi, 2008). Germination capacity and physiological vigour are inherent characteristics of seeds that directly influence their overall quality. It is essential to categorize the variability among seed accessions to effectively manage and expand germplasm resources. The objectives of the study were, therefore, to determine varietal differences in seed germination percentage, days taken for germination and survival percentage among fourteen different bitter gourd genotypes.

2. MATERIALS AND METHODS

The experiment was conducted in the eastern dry zone of Karnataka at the Department of Horticulture, University of Agricultural Sciences, **GKVK, Bengaluru**. Fourteen genotypes (Plate 1.) collected from various sources for the experiment, along with their silent features, are presented in Table 1.

Table 1. Genotypes along with their source of collection and salient features

| Sl. No. | Genotypes | Salient features | Source of collection |
|---------|------------------|---|----------------------|
| 1 | Punjab 14 | Plants are bushy and bear light green fruits with average weight of 35 g. Yield 14 t ha ⁻¹ . | NSC, New Delhi |
| 2 | Hirkani | Fruits dark green, 15-20 cm long, spindle shaped with warts and prickles, yield t ha ⁻¹ in 160 days. | MPKV, Rahuri |
| 3 | PusaRasdar | Fruits juicy, smooth, non-prickled with tender skin, fleshy and dark green colour. Average fruit weight is 110 g with an average yield of 0.5 t/ 100 sqm in insect proof net-house. | IARI, New Delhi |
| 4 | PusaPurvi | First small fruited variety, dark green colour fruits, small size (4-5 cm long and 3-4 diameter) and crispy flesh with high dry matter. Average yield is 8.78 t ha ⁻¹ . | IARI, New Delhi |
| 5 | Priya | Extralong green spiny fruits with white tinge at styler end, average fruit length 39 cm. Average fruit weight 235 g with a productivity of 24.5 t ha ⁻¹ . | KAU, Thrissur |
| 6 | Konkan Tara | Fruits green, prickly, medium long (15-16 cm) and spindle shaped. Yield 24 t ha ⁻¹ . | KKV, Dapoli |
| 7 | Konkan Karali | Long attractive sharp prickled, dark shiny green colour fruits suitable for high rainfall areas with a yield of 16-18 t ha ⁻¹ . | KKV, Dapoli |
| 8 | Pant Karela 3 | Cylindrical dark green fruits with a length of 24 cm, suitable for plain and hilly areas with a yield of 15-16 t ha ⁻¹ . | GBPUAT, Pantnagar |
| 9 | Pant Karela 4 | Dark green fruits with a length of 30-35 cm. Yield 12.5-15 t ha ⁻¹ . | GBPUAT, Pantnagar |
| 10 | CO 1 | Dark green fruits with medium length (20-25 cm) and weight (100-120 g). Yield 14 t ha ⁻¹ . | TNAU, Coimbatore |
| 11 | Preethi | Medium sized white fruits with spines, average fruit length 30 cm, average fruit girth 24 cm, average fruit weight 0.31 kg with a productivity 15 t ha ⁻¹ . | KAU, Thrissur |
| 12 | Phule Green Gold | Fruits dark green, 25-30 cm long, prickled, tolerant to downy mildew, yield 23 t ha ⁻¹ in 160-180 days. | MPKV, Rahuri |
| 13 | Pusa Do Mausami | Fruits are dark green, club like shape with 7-8 continuous ribs. Fruit weight is 100-120 g with a yield 12-15 t ha ⁻¹ . | IARI, New Delhi |
| 14 | PusaVishesh | Selection from a local collection and suitable for growing during summer. Fruits are glossy green in colour, medium long and thick. | IARI, New Delhi |

The seeds of bitter gourd procured from the various sources for the experiment were sorted manually based on appearance and colour to separate viable (plumpy, firm, and dark brown to black) and non-viable (shriveled, papery, lightweight, and discoloured) seeds. Viable seeds are pre-soaked in water for about 12 hours and sown in the Pro Trays containing sand, soil, and farm yard manure (FYM) in a 1:2:1 ratio with coir pith on top (Plate 2). with three replicationsto determine varietal differences among the fourteen genotypes. Observations on germination percentage, days taken for germination, and survival percentage were recorded.

The mean values of germination percentage, days taken for germination, and survival percentage values of replications were analysed following the method given by Panse and Sukhatme(1985). The significance of the differences among all the treated lines was tested by a F-test using the error variance. The complete data was analysed using Complete Randomized Design (CRD) and OP-Stat software.



Plate 1. Variation among the seeds of 14 bitter gourd genotypes.



Plate 2. Variation in germination among different bitter gourd genotypes.

3. RESULTS AND DISCUSSION

3.1 Germination Percentage

The analysis of the germination performance across different genotypes, based on the number of seeds germinated out of 50 sown and the resulting germination percentages, reveals significant variability (Table 2.).PusaPurvi (91.67%) followed by Konkan

Karali(88.33%), Konkan Tara (88.00%), Pusa Do Mausami (80.00%), PusaVishesh (78.33%),Phule Green Gold (74.33) and Hirkani (75.00%), exhibited the highest germination percentage, indicating superior germination performance. Conversely, genotypes like CO 1 (40.33%), Punjab 14 (48.33%), and Priya (50.00%)exhibited lowest germination percentage. This variability highlights the impact of genotype on germination success, underscoring the importance of selecting genotypes with higher germination percentages for agricultural practices.

Table 2. Meanvariation of germination percentage among 14 different bitter gourd genotypes

| Genotypes | No. of seeds germinated out of 50 seeds sown | Germination percentage |
|------------------|---|-------------------------------|
| Punjab 14 | 24.16 | 48.33 |
| Hirkani | 37.05 | 75.00 |
| PusaRasdar | 28.33 | 56.67 |
| PusaPurvi | 45.83 | 91.67 |
| Priya | 25.00 | 50.00 |
| Konkan Tara | 44.00 | 88.00 |
| Konkan Karali | 44.17 | 88.33 |
| Pant Karela 3 | 30.67 | 61.33 |
| Pant Karela 4 | 32.00 | 64.00 |
| CO 1 | 20.17 | 40.33 |
| Preethi | 29.00 | 58.00 |
| Phule Green Gold | 37.17 | 74.33 |
| Pusa Do Mausami | 40.00 | 80.00 |
| PusaVishesh | 39.17 | 78.33 |
| C.D. | 7.34 | 14.69 |
| SE(m) | 2.52 | 5.05 |
| SE(d) | 3.56 | 7.14 |
| C.V. | 12.82 | 12.82 |

3.2 Days taken for germination

The analysis of the days taken for germination across different genotypes reveals a notable range in mean germination times, from 8.00 days for Hirkani to 13.00 days for Pant Karela 4 as shown in the Table 3. Genotypes Hirkani (8.00 days), Punjab 14 (8.50 days), PusaRasdar (9.00 days) and Konkan Tara (9.00 days) exhibited shortest germination periods, making them favourable for faster germination. In contrast, genotypes like Pant Karela 4 (13.00 days), CO 1 (12.00) and Konkan Karali (12.00 days) displayed the longest

germination times, indicating potential delays in the germination process. Genotypes with moderate germination times, such as Pant Karela 3 (10.49 days), Phule Green Gold (11.00 days), and PusaVishesh (11.00 days), present potential for further improvement. The diversity in germination time among genotypes is influenced by genetic disparities, encompassing factors like seed dormancy and size. Additionally, environmental conditions during maturation, storage and germination, along with variations in seed coat characteristics, contribute significantly to the observed differences.

Table 3. Meanvariation of days taken for germinationamong 14 different bitter gourd genotypes

| Genotypes | Days taken for germination |
|------------------|-----------------------------------|
| Punjab 14 | 8.50 |
| Hirkani | 8.00 |
| PusaRasdar | 9.00 |
| PusaPurvi | 9.50 |
| Priya | 10.00 |
| Konkan Tara | 9.00 |
| Konkan Karali | 12.00 |
| Pant Karela 3 | 10.49 |
| Pant Karela 4 | 13.00 |
| CO 1 | 12.00 |
| Preethi | 9.50 |
| Phule Green Gold | 11.00 |
| Pusa Do Mausami | 10.00 |
| PusaVishesh | 11.00 |
| C.D. | 2.17 |
| SE(m) | 0.74 |
| SE(d) | 1.05 |
| C.V. | 12.61 |

3.3 Survival Percentage

The survival percentage of germinated seeds varies significantly among the different genotypes, ranging from 82.12% (CO 1) to 97.81% (PusaPurvi) as shown in the Table 4. Genotypes such asPusaPurvi, Hirkani,Phule Green Gold and Punjab 14 exhibited highest survival rate above 95% indicating robust performance post-germination while genotypeCO 1 (82.12%)exhibited lower survival percentage, suggesting potential challenges in sustaining growth after germination. These findings highlight the critical impact of genetic variation(Fig

1.) on the survival of seedlings, emphasizing the importance of selecting genotypes with higher survival percentages for improved agricultural outcomes.

Table 4. Meanvariation of Survival percentage among 14 different bitter gourd genotypes

| Genotypes | Survival percentage |
|------------------|---------------------|
| Punjab 14 | 95.86 |
| Hirkani | 97.30 |
| PusaRasdar | 92.94 |
| PusaPurvi | 97.81 |
| Priya | 86.00 |
| Konkan Tara | 93.18 |
| Konkan Karali | 90.93 |
| Pant Karela 3 | 93.46 |
| Pant Karela 4 | 90.62 |
| CO 1 | 82.12 |
| Preethi | 88.66 |
| Phule Green Gold | 96.05 |
| Pusa Do Mausami | 92.50 |
| PusaVishesh | 92.34 |
| C.D. | 18.31 |
| SE(m) | 6.63 |
| SE(d) | 9.38 |
| C.V. | 12.47 |

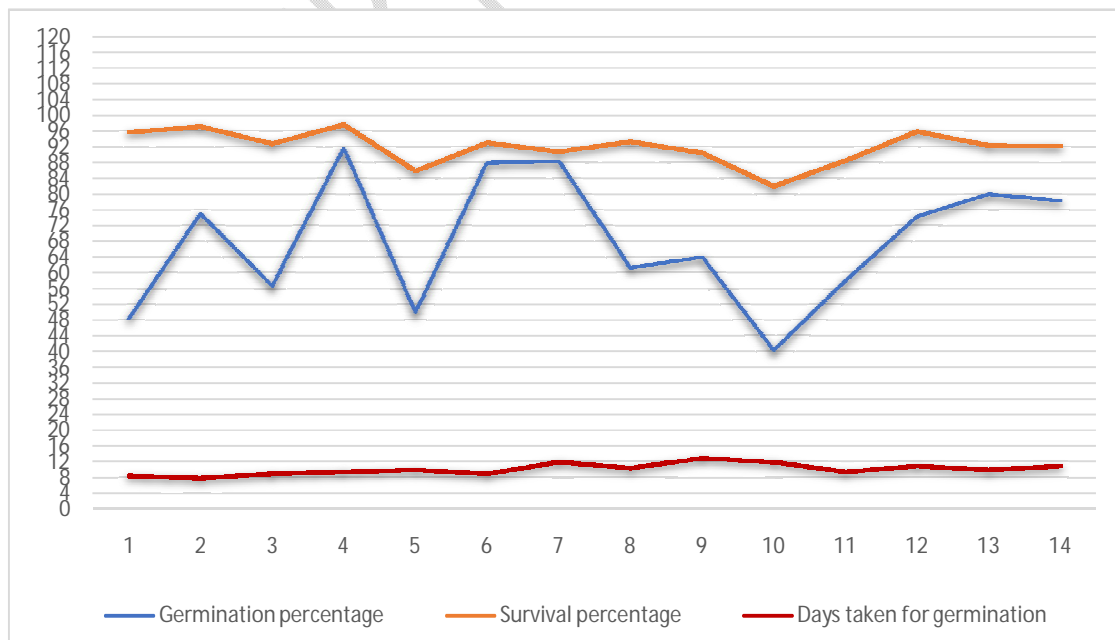


Fig 1. Variation among bitter gourd genotypes on germination percentage, survival percentage and days taken for germination.

4. CONCLUSION

The study on the seed germination and survival of different bitter gourd genotypes reveals significant variability. Genotypes such as Hirkani, Punjab 14, PusaRasdar, and Konkan Tara exhibited shorter germination periods, suggesting favorable traits for rapid establishment. Conversely, Pant Karela 4, CO 1, and Konkan Karali displayed longer germination times, indicating potential delays in establishment. High germination percentages were observed in genotypes like PusaPurvi, Konkan Karali, and Phule Green Gold, highlighting their robust germination potential. Post-germination survival rates varied widely, with genotypes such as PusaPurvi and Phule Green Gold showing exceptional resilience, while CO 1 exhibited lower survival percentage. These findings underscore the importance of genotype selection in optimizing germination and survival rates, which are critical for achieving high crop yields and robust plant growth. Future research should focus on developing strategies to improve the germination and survival rates of less robust genotypes, potentially through genetic enhancement or optimized growing conditions.

Disclaimer (Artificial intelligence)

Author(s) hereby declare that NO generative AI technologies such as Large Language Models (ChatGPT, COPILOT, etc) and text-to-image generators have been used during writing or editing of manuscripts.

REFERENCES

1. Sorifa, A.M., 2018. Nutritional compositions, health promoting phytochemicals and value added products of bitter gourd: a review. *International Food Research Journal*, 25(5).
2. Jeffrey C. A review of the cucurbitaceae. *The Botanical Journal of the Linnean Society*. 1980;81(3):233-247.
3. Okabe H, Miyahara Y, Yamauchi T. Studies on the constituents of *Momordicacharantia* L. IV. Characterization of the new cucurbitacin glycosides of the immature fruits. (2) Structures of the bitter glycosides, momordicosides K and L. *Chemical and Pharmaceutical Bulletin*. 1982;30(12):4334-4340.
4. Yeh GY, Eisenberg DM, Kaptchuk TJ, Phillips RS. Systematic review of herbs and dietary supplements for glycemic control in diabetes. *Diabetes Care*. 2003;26(4): 1277-1294.
5. Grover JK, Yadav SP. Pharmacological actions and potential uses of *Momordicacharantia*: A review. *J Ethnopharmacol*. 2004; 93(1):123–32.

6. Bagateli JR, Dörr CS, Schuch LOB, Meneghello GE.. Productive performance of soybean plants originated from seed lots with increasing vigor levels. *Journal of Seed Science* 2019; 151-159.
7. Strucker S, Carvalho IR, Szareski VJ, Barbosa MH. Souza VQ de, Conte GG. Influence of seeds vigor in the attributes of soybean yield. *Rev Ciências Agrárias* 2019; 111-120.
8. Caverzan A, Giacomini R. Müller M, Biazus C, Lângaro NC, Chavarria G. How does seed vigor affect soybean yield components. *Agronomy Journal* 2018; 1318-1327.
9. Abati J. Brzezinski CR, Salvador J, Foloni S, Zucareli C, Bassoi MC. Seedling emergence and yield performance of wheat cultivars depending on seed vigor and sowing density função do vigor de sementes e densidades de semeadura. *Journal of Seed Science* 2017; 58-65.
10. Ebone LA, Caverzan A, Tagliari A, Chiomento JLT, Silveira DC, Chavarria G. Soybean seed vigor: Uniformity and growth as key factors to improve yield. *Agronomy* 2020; 1-15
11. HaungZ, Zhang X, Zheng G, Gutterman Y. Influence of light, temperature, salinity and storage on seed germination of *Haloxylon ammodendron*. *Journal of Arid Environment*, 2003; 55(3): 453–464.
12. Yang QH, Wei Z, Zeng XL. Seed biology and germination ecophysiology of *Camellia nitidissima*. *Forest Ecology and Management*, 2008; 255(1): 113–118.
13. Jamil E, Zeb S, Ali QS, Ahmad N, Sajid M, Siddique S, Effect of Seed Soaking on Seed Germination and Growth of Bitter Gourd Cultivars. *Pure Appl Biol.* 2016; 5(1):31–6.
14. Asna AC, Joseph J, Joseph John K. Botanical Description of Bitter Gourd BT-The Bitter Gourd Genome. In: Kole C, Matsumura H, Behera TK, editors. Cham: *Springer International Publishing*; 2020; p. 7–31.
15. Ghassemi-Golezani K. Mazloomi-Oskooyi R. Effect of water supply on seed quality development in common bean (*Phaseolus vulgaris* var.). *International Journal of Plant Production* 2008; 17-24.
16. Panse VG, Sukhatme PV. Statistical methods for agricultural workers. *Statistical methods for agricultural workers*. 1954: 347.
17. Dutta S, Hazra P, Saha S, Acharya B, Bhattacharjee T, Maurya PK, Banerjee S, Chakraborty I, Chattopadhyay A. Applied mutagenesis could improve economically important traits in bitter gourd (*Momordica charantia* L.). *Journal of genetics*. 2021 Oct;100(2):43.

18. Thampi SS, Sarada S, Joy M, Radhika NS. Assessment of bitter gourd (*Momordica charantia* L.) genotypes for resistance against downy mildew. *Indian Phytopathology*. 2024 Apr 11:1-6.

UNDER PEER REVIEW