

# UNVEILING THE ECONOMIC DYNAMICS OF RICE CULTIVATION: AN EXPERIMENTAL STUDY OF THANJAVUR DISTRICT, TAMIL NADU, INDIA

## ABSTRACT

An experiment on rice treatments to improve soil fertility and sustainable crop productivity was conducted at Agricultural Research Station, Thanjavur district, Tamil Nadu, India during the *rabi* season, 2021-2022, to assess the economic viability and profitability. The experiment consists of ten treatments of rice viz., T<sub>1</sub> -Rice (ADT 46); T<sub>2</sub> -Rice (ADT 46); T<sub>3</sub> -Rice+dhaincha (5:1) (ADT 46); T<sub>4</sub> -Rice+dhaincha (10:1) (ADT 46); T<sub>5</sub> -Rice (ADT 46); T<sub>6</sub> -Rice (Bio fortified-CR Dhan45); T<sub>7</sub> -Rice (ADT 46); T<sub>8</sub> -Rice (Co 52); T<sub>9</sub> -Rice (Seeraga samba); T<sub>10</sub> -Rice (Navara) which were sown on 9<sup>th</sup> September 2021 after harvesting of kharif crop. The soil in which the experiment is being conducted is sandy loam soil. The results revealed that the green manure crops along with rice gave higher paddy yield as compared to commonly practiced rice. The highest test weight (24.1 g) was recorded under the treatment T<sub>3</sub>-Rice+Dhaincha (5:1) which was statistically on par with T<sub>4</sub>-Rice+Dhaincha (10:1). Harvest index recorded highest (0.45) for the treatments T<sub>3</sub>-Rice+Dhaincha (5:1) and T<sub>8</sub>-Rice (Co 52). The economics of the experiment were worked and the cost of cultivation (Rs. 51500), gross income (Rs. 123487), net income (Rs. 71987), and benefit-cost ratio (2.40) were recorded highest in T<sub>3</sub>-Rice+Dhaincha (5:1) variety. Additionally, the results unveiled a substantial correlation between grain yield and economic indicators. Notably, grain yield demonstrated a significant association, reaching a significance level of 95%, with both gross income and net income. Furthermore, an impressive positive correlation, significant at the 99% level, was identified between grain yield and two essential yield traits: test weight and harvest index.

**Keywords:** Rice, Economics, Harvest index, Grain yield and Straw yield

## INTRODUCTION

Rice is not just a staple food in India; it is deeply ingrained in the cultural, social, and economic fabric of the nation. As one of the largest producers and consumers of rice globally, India's agricultural landscape revolves around this essential crop (Fukagawa *et al.*, 2019). Understanding the economics of rice cultivation in India is crucial for comprehending the complexities of the agricultural sector and the broader implications on the national economy (Lal *et al.*, 2016). The economics of rice crops in India encompasses a wide range of factors, including production costs, market dynamics, trade policies, government interventions, and the socio-economic impact on farming communities (Ravi Kumar *et al.*, 2024). With diverse agro-climatic regions, varying farming practices, and a multitude of stakeholders involved, analyzing the economic aspects of rice cultivation in India presents a compelling and multi-dimensional narrative (Ajatasatru *et al.*, 2024).

The economics of rice crops in the Thanjavur district of Tamil Nadu, India, presents a fascinating study of the economic dynamics and implications of rice cultivation in a region known as the "Rice Bowl of Tamil Nadu." With its fertile soil, favorable climatic conditions, and rich

agricultural heritage, the Thanjavur district holds a prominent position in the cultivation of rice, making it an ideal case for examining the economic aspects of this vital crop. Rice cultivation in the Thanjavur district goes beyond mere agricultural production—it significantly influences the local economy, livelihoods of farmers, and the overall socio-economic landscape of the region (Bhaskaran, 2021). Understanding the economics of rice crop in this specific district involves analyzing a range of factors, including production costs, market trends, government policies, yield variations, and income generation (Hossain and Fischer, 1995).

One crucial aspect of rice crop economics in the Thanjavur district is assessing the productivity and efficiency of rice cultivation (Parthasaradhi, 2018). Parameters such as grain yield, test weight, straw yield, and harvest index play a pivotal role in evaluating the economic viability and profitability of rice farming practices. By understanding the relationships among these variables, farmers can optimize their agricultural techniques and resource allocation to maximize yields and economic returns. The economic impact of rice cultivation extends beyond the farm level. Rice serves as a crucial component of the district's food security and contributes to the state's overall rice production (Shew *et al.*, 2019). The market dynamics, including price fluctuations, supply and demand trends, and trade patterns, affect the profitability of rice cultivation and shape the economic prospects of farmers in the Thanjavur district.

Costs of cultivation and gross income are vital economic indicators in rice crop economics. Analyzing the expenses associated with land preparation, seed selection, fertilizers, labor, and machinery provides insights into the financial aspects of rice cultivation (Htwe *et al.*, 2021). Moreover, assessing the revenue generated through the sale of harvested rice grains and the value-added products derived from the crop contributes to understanding the economic benefits and potential income streams for farmers (Ouma *et al.*, 2024).

Furthermore, it is essential to evaluate the net income and benefit-cost ratio to gauge the profitability and efficiency of rice cultivation in the Thanjavur district. Net income represents the surplus revenue after deducting the production costs, providing a measure of the financial gains derived from rice cultivation. The benefit-cost ratio, on the other hand, assesses the economic viability of rice farming by comparing the benefits accrued to the costs incurred.

The economics of rice crop encompasses a multitude of factors that influence its profitability and sustainability (Aalst *et al.*, 2023). From test weight and grain yield to harvest index and net income, understanding these economic indicators is vital for farmers, policymakers, and researchers seeking to optimize rice cultivation practices and ensure a thriving agricultural sector. Understanding these economic indicators is essential for optimizing rice cultivation practices, maximizing profitability, and ensuring the sustainability of the agricultural sector. By focusing on factors such as test weight, grain yield, straw yield, harvest index, gross income, cost of cultivation, net income, and benefit-cost ratio, stakeholders can develop strategies to enhance economic outcomes and promote the long-term success of rice crop cultivation (Mondal *et al.*, 2020).

## **MATERIALS AND METHODS**

### **Experimental site**

The current experiment was conducted in ten distinct treatments (refer to Table 1), at Agricultural Research Station, Thanjavur, Tamil Nadu, India, during the 2021-2022 period. The

geographical coordinates of the research site were recorded as 10°45' North latitude, 79° East longitude, and an elevation of 50 meters above mean sea level. The study aimed to examine the economic parameters of rice crop. The experimental design employed a Randomized Block Design with ten replicated treatments. Each treatment was replicated thrice. Each plot occupied an area of 40 square meters.

**Table 1. Treatment details of the experiment**

Treatments	Rabi
T <sub>1</sub>	Rice (ADT 46)
T <sub>2</sub>	Rice (ADT 46)
T <sub>3</sub>	Rice+dhaincha (5:1) (ADT 46)
T <sub>4</sub>	Rice+dhaincha (10:1) (ADT 46)
T <sub>5</sub>	Rice (ADT 46)
T <sub>6</sub>	Rice (Bio fortified-CR Dhan45)
T <sub>7</sub>	Rice (ADT 46)
T <sub>8</sub>	Rice (Co 52)
T <sub>9</sub>	Rice (Seeraga samba)
T <sub>10</sub>	Rice (Navara)

**Recorded traits:**

**Test weight**

Thousand grains were counted, weighed and represented as 1000 grain weight in grams from a random sample of the net plot yield for each treatment.

**Grain yield**

The crop was harvested from each net plot and the grain yield was meticulously recorded and computed by multiplying net plot size and expressed in q ha<sup>-1</sup>(or) kg ha<sup>-1</sup>.

**Straw yield**

Straw from each treatment's net plot was sun-dried until it reached a uniform weight. The straw from the 10 selected hills was added to the net plot yields before expressing the total straw yield in kg ha<sup>-1</sup>.

**Harvest index**

The harvest index is the proportion of grain yield divided by total biological yield (grain + straw). Yoshida *et al.* (1971) established the formula for calculating it.

$$\text{Harvest index (\%)} = \frac{\text{Grain yield (kg ha}^{-1}\text{)}}{\text{Grain + Straw yield (kg ha}^{-1}\text{)}} \times 100$$

**Economics of rice cultivation**

The following equations were used to calculate the economics of rice farming.

GMR = Yield x Selling price

$$\text{NMR} = \text{GMR} - \text{COC}$$

Gross returns (Rs.)

Benefit cost ratio = -----

Cost of cultivation (Rs.)

where,

Gross Monetary Return (GMR)

Net Monetary Return (NMR)

Benefit Cost Ratio (B:C)

Cost of Cultivation (COC)

### Statistical analysis

For data analysis, the statistical method of analysis of variance (ANOVA) was employed using the AGRES software, specifically the Data Entry Module for Agres Statistical software version 3.01 developed by Pascal Intl. Software Solutions in 1994. To determine the significance of differences between mean values, the least significant differences (LSD) test was utilized at a 5 percent probability level, following the recommendation of Gomez and Gomez (1984). Critical differences were calculated at the 5 percent significance level if significant differences were observed in the treatment groups based on the F-test. Principal Component Analysis and Pearson correlation were conducted using IBM SPSS version 22 software for the computation of the Soil Quality Index. The aforementioned statistical techniques were utilized to thoroughly analyze the collected data while ensuring statistical accuracy and integrity.

### Results and discussion

The results of grain and straw yield of rice crop during *rabi* season are presented in Table 2. Test weight was between 20.6 to 24.1 g during the *rabi* season with a mean of 22.1 g. Highest (24.1 g) test weight was recorded in the treatment T<sub>3</sub>-Rice (ADT 46) +Dhaincha (5:1) which was on par with T<sub>4</sub>-Rice (ADT 46) +Dhaincha(10:1) and the lowest (20.6 g) was recorded in the treatment T<sub>10</sub>-Rice (Navara). Significant differences were observed between the treatments. The variations in the genetic make-up of the varieties likely accounted for the variation in test weight among them. Also, the nutrients applied to the crop might have resulted in the accumulation of more test weight (Bhandari *et al.*, 2020).

The data showed that the value of grain yield ranged between 2322 to 6672 kg ha<sup>-1</sup> with a mean of 5041 kg ha<sup>-1</sup>. A significantly higher (6672 kg ha<sup>-1</sup>) grain yield was recorded in the treatment T<sub>3</sub>-Rice (ADT 46) +Dhaincha (5:1) which was on par with the treatments T<sub>4</sub> and T<sub>8</sub> and the lower (2322 kg ha<sup>-1</sup>) was observed in the treatment T<sub>10</sub>-Rice (Navara). This might be associated with higher tillering capacity and it contains more grains per panicle compared to other varieties under rice cultivation (Mohanty *et al.*, 2014).

**Table 2: Effect of different treatments on test weight, grain, straw yield and harvest index of rice crop during *rabi* season**

Treatments	Test weight (g)	Grain yield (kg/ha)	Straw yield (kg/ha)	Harvest index
T <sub>1</sub> -Rice (ADT 46)	22.5	5818	7298	0.44
T <sub>2</sub> -Rice (ADT 46)	21.8	5434	7238	0.43
T <sub>3</sub> -Rice (ADT 46) +Dhaincha (5:1)	24.1	6672	8219	0.45
T <sub>4</sub> -Rice (ADT 46) +Dhaincha(10:1)	23.9	6198	8217	0.43
T <sub>5</sub> -Rice (ADT 46)	22.1	5645	7492	0.43
T <sub>6</sub> -Rice (Bio fortified-CR Dhan 45)	21.3	3677	5588	0.40
T <sub>7</sub> -Rice (ADT 46)	21.4	5382	7109	0.43
T <sub>8</sub> -Rice (Co 52)	22.8	6172	7437	0.45
T <sub>9</sub> -Rice (Seeraga Samba)	21.2	3097	4199	0.42
T <sub>10</sub> -Rice (Navara)	20.6	2322	3592	0.39
Mean	22.1	5041	6638	0.42
SEd	0.501	134.2	113.3	0.011
CD (0.05)	1.053	282	238	0.023

The values of straw yield ranged between 3592 to 8219 kg ha<sup>-1</sup> with a mean of 6638 kg ha<sup>-1</sup>. A significantly higher (8219 kg ha<sup>-1</sup>) straw yield was observed in the treatment T<sub>3</sub>-Rice (ADT 46) +Dhaincha (5:1) which was on par with the treatment T<sub>4</sub> and the lower (3592 kg ha<sup>-1</sup>) straw yield was observed under the treatment T<sub>10</sub>-Rice (Navara). The better plant growth with higher dry matter production might be the cause for the higher straw yield of mentioned varieties (Kumar *et al.*, 2015). According to Kusutani *et al.* (2000) a crop's output of straw is directly related to its vegetative development, including plant height, tiller counts, number of leaves, and ultimate stand. The increase in the grain and straw yield of ADT 46 is related to higher tiller and dry matter production which resulted in superior yield attributes and yield. This effect is similar to the findings of Govindan and Grace (2012).

It was revealed that the data showed that the values of harvest index ranged between 0.39 to 0.45 with a mean of 0.42. The highest (0.45) value of harvest index was observed under the treatments T<sub>3</sub>-Rice (ADT 46) +Dhaincha (5:1) and T<sub>8</sub>-Rice (Co 52) which were on par with T<sub>1</sub>, T<sub>2</sub>, T<sub>4</sub>, T<sub>5</sub>, and T<sub>7</sub> treatments and the lowest (0.39) value is observed under the treatment T<sub>10</sub>-Rice (Navara). Significant differences between the treatments on harvest index during the *rabi* season was observed. Higher HI values lead to increased contribution for yield increment in ADT 46 and Co 52. This is in line with Parthasarathi *et al.* (2013). T<sub>10</sub>-Rice (Navara) variety recorded lower harvest index (0.39). Production of less productive tillers per plant subsequently reduces both source and sink capacity which in turn reduced the grain and straw yield of Navara variety. This is similar to the findings of Huang *et al.* (2015) where larger sink size, high remobilization of stored reserves and maintained biomass production after heading were responsible for the high harvest index.

**Table 3: Economics of different treatments**

<b>Treatments</b>	<b>Gross Income (Rs/ha/yr)</b>	<b>Cost of cultivation (Rs/ha/yr)</b>	<b>Net Income (Rs/ha/yr)</b>	<b>BCR</b>
<b>T<sub>1</sub>-Rice (ADT 46)</b>	111422	51500	59922	2.16
<b>T<sub>2</sub>-Rice (ADT 46)</b>	105691	51500	54191	2.05
<b>T<sub>3</sub>-Rice (ADT 46) +Dhaincha (5:1)</b>	123487	51500	71987	2.4
<b>T<sub>4</sub>-Rice (ADT 46) +Dhaincha(10:1)</b>	118997	51500	67497	2.31
<b>T<sub>5</sub>-Rice (ADT 46)</b>	105317	51500	53817	2.04
<b>T<sub>6</sub>-Rice (Bio fortified-CR Dhan 45)</b>	70452	51500	18952	1.37
<b>T<sub>7</sub>-Rice (ADT 46)</b>	102005	51500	50505	1.98
<b>T<sub>8</sub>-Rice (Co 52)</b>	116274	51500	64774	2.26
<b>T<sub>9</sub>-Rice (Seeraga Samba)</b>	107182	48500	58682	2.21
<b>T<sub>10</sub>-Rice (Navara)</b>	85143	48500	36643	1.76
<b>Mean</b>	104597	50900	53696	2.05
<b>SEd</b>	2180.25	1167.84	1270.63	0.0460
<b>CD (0.05)</b>	4580.61	2543.58	2669.53	0.0967

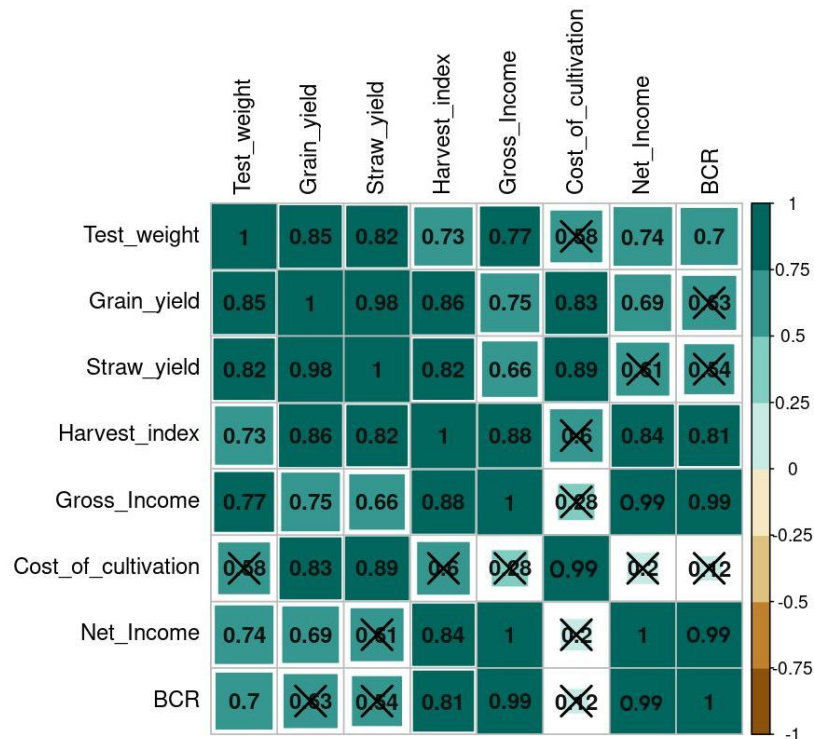
The ultimate criterion for acceptability and widespread use of any technology is economics, and, cropping system technology is also no exception to this. Among several indices of economic efficiency in any production system, a net return has the greatest influence on the practical utility and adoption of the technology by farmers. In the present study economics of the different varieties showed that the highest (Rs. 123487 per ha) gross income was recorded in T<sub>3</sub>-Rice (ADT 46) +Dhaincha (5:1) varieties because of higher value of produce and the lowest (Rs. 70452 per ha) was recorded in the treatment T<sub>6</sub>-Rice (Bio fortified-CR Dhan45) varieties. The cost of cultivation is almost same in all the varieties which is (Rs. 51500 per ha). The highest (Rs. 71987 per ha) net income was recorded under T<sub>3</sub>-Rice (ADT 46) +Dhaincha (5:1) and the lowest (Rs. 18952 ha) was observed under T<sub>6</sub>-Rice (Bio fortified-CR Dhan45) varieties. The higher (2.40) benefit-cost ratio was observed in T<sub>3</sub>-Rice (ADT 46) +Dhaincha (5:1) and the lower (1.37) was observed in T<sub>6</sub>-Rice (Bio fortified-CR Dhan45) varieties.

#### **Correlation studies:**

Correlation studies were undertaken to examine the relationship between various yield traits and economic parameters of crops. The results revealed that grain yield exhibited a significant correlation, at a 95% significance level, with both gross income and net income. Moreover, a strong positive correlation, significant at the 99% level, was observed between grain yield and both test weight and harvest index ( $r = 0.84$ ,  $r = 0.86$ ). Notably, a significant positive correlation, also at the 99% level, was found between the benefit-cost ratio and harvest index ( $r = 0.81$ ). This implies that harvest index plays a crucial role in determining the benefit-cost ratio of the crop. Among the different rice treatments studied, the cost of cultivation showed a significant correlation, at the 99% level, with grain yield ( $r = 0.83$ ). However, no correlation was observed between the cost of cultivation and harvest index. This indicates that partitioning efficiency plays a pivotal role in determining the economic viability of the crop. Additionally, it was observed that the benefit-cost

ratio exhibited a significant positive correlation, at the 99% level, with both gross and net incomes ( $r = 0.99$ ,  $r = 1$ ) (Hairmansiset al., 2010).

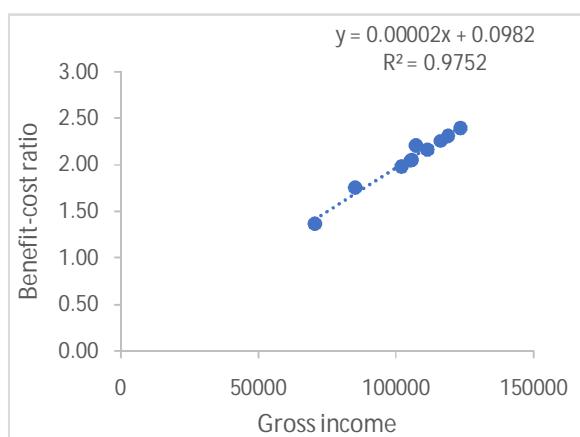
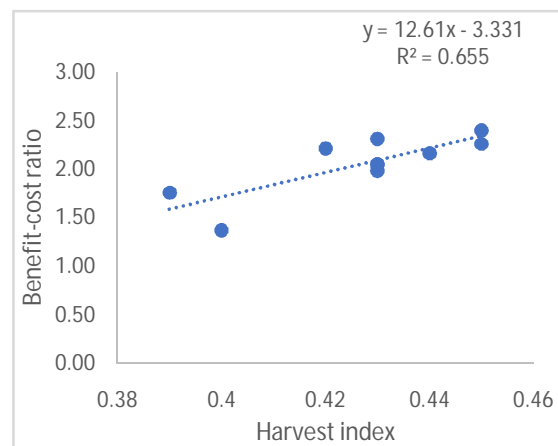
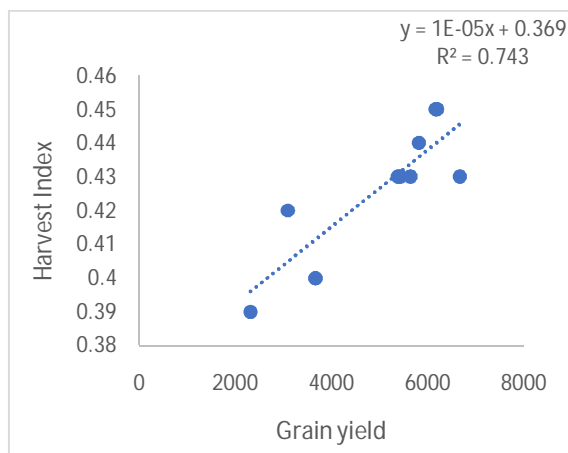
**Figure 1. Correlation analysis of different economic parameters**



**Regression analysis:**

The results of regression analysis showed that the benefit-cost ratio and harvest index had a significantly strong relationship having a positive slope and  $R^2$  value of 0.656. However, the strength of the relationship between harvest index and grain yield was comparatively higher with an  $R^2$  value of 0.744. Per unit change in grain yield, there was an increase of 7.380 units (slope) of net income was observed in the research. There was a strong relationship existed between the benefit-cost ratio and gross income having an  $R^2$  value of 0.975 but the unit change in gross income didn't have a great impact on the benefit-cost ratio because the value of the slope that the graph showed was 0.00002. Also, there is a relationship between net income and grain yield with an  $R^2$  value of around 0.480. Similar findings were reported by Kole and Hasib (2008).

**Figure 2. Regression graphs and their equations of different economic and yield traits to study their strengths**



## Conclusion

From the above-mentioned results and discussion, it could be concluded that the research study compared various treatments in rice cultivation, focusing on test weight, grain yield, straw yield, harvest index, gross income, cost of cultivation, net income, and benefit-cost ratio. The T<sub>3</sub>-Rice (ADT 46) + Dhaincha (5:1) treatment stood out as the most superior option. The T<sub>3</sub>-Rice (ADT 46) + Dhaincha (5:1) treatment demonstrated significant improvements in test weight, indicating healthier and denser grains with better market value. It also led to substantially higher grain and straw yields, showcasing enhanced productivity and efficient resource utilization. Incorporating Dhaincha into T<sub>3</sub>-Rice (ADT 46) + Dhaincha (5:1) cultivation boosted the harvest index, ensuring more effective resource allocation towards grain production. This resulted in increased profits and greater economic benefits, as reflected in the gross income figures. Moreover, the T<sub>3</sub>-Rice (ADT 46) + Dhaincha (5:1) treatment exhibited a competitive edge in cost-effectiveness by reducing expenses while maintaining high productivity, making it an attractive choice for farmers seeking to maximize profits sustainably. The net income analysis further highlighted the superiority of the T<sub>3</sub>-Rice (ADT 46) + Dhaincha (5:1) treatment, indicating a potential for enhanced financial returns and improved livelihoods for farmers compared to other treatments. Lastly, the benefit-cost ratio (BCR) confirmed the economic viability and profitability of the T<sub>3</sub>-Rice (ADT 46) + Dhaincha (5:1) treatment, making it a highly recommended practice for farmers.

## References

- Ajatasatru, A., Prabhu, V., Pal, B. D. and Mukhopadhyay, K. (2024). Economy-wide impact of climate smart agriculture in India: a SAM framework. *Journal of Economic Structures*, **13**(1):4.
- Bhandari, S., Sapkota, S. and Gyawali, C. (2020). Effect of different methods of crop establishment on growth and yield of a spring rice at Janakpurdham-17, Dhanusha. *Malaysian Journal of Sustainable Agriculture*, **4**(1): 10-15.
- Bhaskaran, E. (2021). The Performance of Paddy and Rice Mill Cluster in Thanjavur District of Tamil Nadu. *Productivity*, **62**(1): 43-54.
- Fukagawa, Naomi K. and Lewis H. Ziska. (2019). "Rice: Importance for global nutrition." *Journal of nutritional science and vitaminology* **65**. Supplement: S2-S3.
- Gomez, K. A. and Gomez, A. A. (1984). *Statistical procedures for agricultural research*. John Wiley & sons.
- Govindan, R. and T. Grace. (2012). "Influence of drip fertigation on growth and yield of rice varieties (*Oryza sativa* L.)." *Madras Agricultural Journal*. **99** (4/6):244-247.
- Hairmansis, A., Kustianto, B. and Suwarno, S. (2010). Correlation analysis of agronomic characters and grain yield of rice for tidal swamp areas. *Indonesian Journal of Agricultural Science*, **11**(1): 11-15.
- Hossain, M. and Fischer, K. S. (1995). Rice research for food security and sustainable agricultural development in Asia: achievements and future challenges. *GeoJournal*, **35**: 286-298.
- Htwe, T., Sinutok, S., Chotikarn, P., Amin, N., Akhtaruzzaman, M., Techato, K., and Hossain, T. (2021). Energy use efficiency and cost-benefits analysis of rice cultivation: A study on conventional and alternative methods in Myanmar. *Energy*, 214.
- Huang, M., X. Yin, L. Jiang, Y. Zou, and G. Deng. 2015. "Raising potential yield of short-duration rice cultivars is possible by increasing harvest index." *BASE*.
- Kole, P. C. and Hasib, K. M. (2008). Correlation and regression analysis in scented rice. *Madras Agricultural Journal*, **95**(jan-jun), 1.
- Kumar, V., D. Kumar, Y. Singh, and R. Raj. (2015). "Effect of iron fertilization on dry-matter production, yield and economics of aerobic rice (*Oryza sativa*)." *Indian Journal of Agronomy*. **60** (4):547-553.
- Kusutani, A., M. Tovata, K. Asanuma. and J. Cui. (2000). "Studies on the varietal differences of harvest index and morphological characteristics of rice." *Japanese Journal Crop Science*. **69**:359-364.
- Lal B, Nayak AK, Gautam P, Tripathi R, Shahid M, Panda BB, Bhattacharyya P and Rao KS. (2016). System of Rice Intensification: A Critical Analysis. Research Bulletin No. 9. ICAR-National Rice Research Institute, Cuttack, Odisha, 753006, India. pp 52.
- Mohanty, T. R., Maity, S. K., Roul, P. K. and Sahoo, K. C. (2014). Studies on yield, economics and energetics of rice (*Oryza sativa* L.) in relation to crop establishment methods and nutrient management practices. *International Journal of Bio-resource and Stress Management*, **5**(Dec, 4), 495-501.
- Mondal, R., Goswami, S., Goswami, S. B. and Jana, K. (2020). Effect of different nutrient management practices on growth, grain yield, production economics, soil nutrient

- availability of transplanted *kharif* rice (*Oryza sativa* L.) and correlation studies, 172-179.
- Ouma, M. A., Ouma, L. O., Ombati, J. M. and Onyango, C. A. (2024). A cost benefits analysis of the adoption of system of rice intensification: Evidence from smallholder rice farmers within an innovation platform in Oluch irrigation scheme, Kenya. *Plos one*, **19**(1).
- Parthasarathi, S. "An Economic Study Of Paddy Cultivation In Thanjavur District."
- Parthasarathi, T., G. Velu. and P. Jeyakumar. (2013). "Impact of crop heat units on growth and developmental physiology of future crop production: A review." *Journal of Crop Science and Technology*, **2**(1):2319-3395.
- Ravi Kumar, K. N., Reddy, K. G., Shafiwu, A. B. and Mohan Reddy, M. J. (2024). Trade determinants and opportunities for Indian rice: a dynamic panel gravity model perspective. *Cogent Economics & Finance*, **12**(1), 2312367.
- Shew, A. M., Durand-Morat, A., Putman, B., Nalley, L. L. and Ghosh, A. (2019). Rice intensification in Bangladesh improves economic and environmental welfare. *Environmental Science & Policy*, **95**, 46-57.
- van Aalst, M. A., Koomen, E., Tran, D. D., Hoang, H. M., Nguyen, H. Q. and De Groot, H. L. (2023). The economic sustainability of rice farming and its influence on farmer decision-making in the upper Mekong delta, Vietnam. *Agricultural Water Management*, 276.
- Yoshida, S., Forno, D. A. and Cock, J. H. (1971). Laboratory manual for physiological studies of rice. *Laboratory manual for physiological studies of rice*.