

Original Research Article

Delineation of Soil-Crop Nutrient Status in Continuous Cotton Growing Areas of Sangareddy District of Telangana under GIS Environment

ABSTRACT

Cotton is a widely grown crop in Sangareddy district of Telangana. A soil-crop nutrient survey was undertaken during *Rabi*, 2023 to study the fertility status of the cotton growing soils at 0-15 cm and 15-30 cm depth along with physical and physico-chemical soil properties and cotton leaf nutrient content. Georeferenced soil and leaf samples were collected during flowering stage from 112 sites covering 23 *mandals*. In the study area, bulk density, sand, silt and clay content ranged from 1.36-1.66 Mg m⁻³, 41.84-78.02 per cent, 6.74-29.60 per cent and 10.76-42.76 per cent, respectively. The soils were strongly acidic to slightly alkaline in reaction (4.25-7.98; 4.44-7.97), non-saline (0.026-0.254 dS m⁻¹; 0.020-0.241 dS m⁻¹) and low to high in organic carbon (2.03 to 11.52 g kg⁻¹; 1.13 to 8.24 g kg⁻¹) at 0-15 cm and 15-30 cm depths, respectively. Available nitrogen, phosphorus, potassium and exchangeable magnesium contents ranged from 101 to 448 kg ha⁻¹, 7 to 41 kg ha⁻¹, and 154 to 763 kg ha⁻¹ at 0-15 cm depth, respectively while 91 to 319 kg ha⁻¹, 4 to 39 kg ha⁻¹, and 142 to 730 kg ha⁻¹ at 15-30 cm depth, respectively. Total nitrogen, phosphorus, potassium and magnesium contents in the collected cotton leaves ranged from 0.53 to 3.64 per cent, 0.12 to 0.68 per cent, 0.80 to 1.84 per cent and 0.27 to 0.92 per cent, respectively. Soil fertility maps were prepared considering the low/deficient, medium and high/sufficient range of soil macronutrients (N, P, K and Mg) at the depth of 0-15 cm under QGIS 3.36.1. Soil fertility maps showed that soils of the study area were low in available nitrogen, low to high in available phosphorus, medium to high in available potassium and sufficient in exchangeable magnesium.

Keywords: Soil fertility status; nutrients; ~~physical properties~~; physico-chemical properties; maps, cotton, GIS.

1. INTRODUCTION

Cotton (*Gossypium hirsutum* L.) is an important cash and fibre crop across the world and in India as well. Cotton is popularly known as 'White Gold' as it has a key role in economic, political and social status of the world by earning foreign exchange. India is the second largest producer of cotton with 53.85 lakh tones equivalent to 316 lakh bales of 170 kg. Cotton being deep rooted crop, it removes large quantities of nutrients from the soil profile. There is a significant decline in area under cotton in 2023-24 in southern states of India up to 20.22% and production is also expected to decline by 22.76% [1]. In Telangana region, cotton is grown in an area of 19.73 lakh hectares with a production of 57.45 lakh bales (170 kg each) and productivity of 495 kg ha⁻¹ in which area of cotton in Sangareddy district is 1.48

lakh hectares with a production of 5.56 lakh bales (170 kg each) and productivity of 816.47 kg ha⁻¹ [2]. Due to continuous cotton cultivation, soil properties may get affected thereby modifying nutrient contents and their availability to the crops. Since, cotton is a long duration crop, soil under cotton cultivation is exhausted very soon as the nutrient uptake is very high due to the simultaneous production of vegetative and reproductive structures during the active growth phase in this crop. High-yielding cotton crops impose a high demand for mineral nutrients from the soil over a short period of time, and foliar nutrient deficiency symptoms can arise during crop maturity due to rapid translocation of nutrients from the foliage into the developing bolls. Knowledge of the physico-chemical properties, available nutrients status of the soils helps in demarcating the areas where nutrient application is needed for profitable crop production. In this aspect, assessment of leaf nutrient status is advantageous because plant integrates nutrient supply over a period and can thereby, indicate the extent of nutrient deficiency in the crop and soil nutrient supplying capacity required to manage the crop for increasing the yield. GIS-based soil fertility mapping is instrumental in soil fertility due to its ability to integrate spatial data with soil information. Thus, delineating the cotton growing soils for their fertility helps in understanding the soil related constraints and their intensity which is essential to develop site specific management strategies. Detailed and systematic investigation on the properties of soils, specifically in cotton growing soils of Sangareddy district of Telangana is meagre. Hence, the present investigation was undertaken to study the soil-crop nutrient status of cotton growing areas of Sangareddy district in Telangana.

2. MATERIALS AND METHODS

A survey was conducted during *Rabi* 2023 in continuous cotton growing soils of Sangareddy district which is situated between 17.6294° N and 78.0917° E. Sangareddy district comes under semi-arid climate with an annual average rainfall of 843.2 mm. The highest mean monthly rainfall of 197.2 mm is recorded in July and lowest of 3.7 mm in December. The district experiences an average annual maximum and minimum temperature of 33.3° C and 20.5° C with annual relative humidity varying from about 61% to 93% in the morning to 21% to 64% in the afternoon [3]. Total of 224 soil samples (112 at 0-15 cm depth and 112 at 15-30 cm depth) and 112 leaf samples were collected from continuous cotton growing areas covering 23 mandals of Sangareddy district during the flowering stage of cotton crop. GPS points were recorded for each sampling site (Fig. 1). Greater number of samples were collected from mandals having larger area under cotton cultivation. Soil and crop nutrient status was determined along with the physical and physico-chemical properties of the soils. Bulk density and soil texture analysis were carried out for surface soils only while both surface and sub-surface soils were analysed for soil pH, EC, OC, available N, P and K and exchangeable Mg. Soil fertility mapping for N, P, K and Mg at 0-15 cm depth was carried out under QGIS 3.36.1. The leaf samples were analysed for N, P, K and Mg. The analyses were carried out following standard procedures furnished in Table 1.

Comment [CA1]: How many samples were collected per Mandal? Does that represent the area covered well?

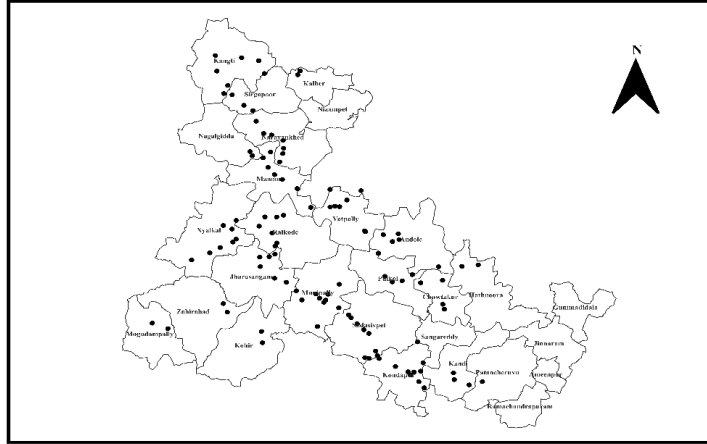


Fig. 1. Location of the sampling sites of Sangareddy district.

Table 1. Details of the analytical methods followed for soil and plant analysis.

S. No.	Parameter	Method or reference
A Physical Properties		
1.	Soil Texture	Hydrometer method (Bouyoucos, 1962)
2.	Bulk Density (Mg m^{-3})	Core sampler method (Black and Hartge, 1986)
B Physico-chemical Properties		
3.	Soil pH (1:2.5 soil water suspension)	Digital pH meter (Jackson, 1973)
4.	Soil EC (dS m^{-1}) (1:2.5 soil water suspension)	Conductivity meter (Jackson, 1973)
5.	Organic Carbon (g kg^{-1})	Wet Oxidation Method (Walkley and Black, 1934)
C Chemical Properties		
6.	Available N in soil (kg ha^{-1})	Alkaline permanganate method (Subbaiah and Asija, 1956)
7.	Available P in soil (kg ha^{-1})	Olsen's method (Olsen <i>et al.</i> , 1956)/ Bray's method (Bray and Kurtz, 1945) of extraction followed by spectrophotometric method
8.	Available K in soil (kg ha^{-1})	Extraction with neutral normal ammonium acetate followed by flame photometer method (Jackson, 1973)
9.	Exchangeable Mg in soil ($\text{meq.}100 \text{ g}^{-1}$ soil)	Extraction with neutral normal ammonium acetate followed by MP-AES method (Jackson, 1973)
D Crop Nutrient Content		
10.	Plant N content (%)	Piper, 1966
11.	Plant P content (%)	Piper, 1966
12.	Plant K content (%)	Piper, 1966
13.	Plant Mg content (%)	Piper, 1966

3. RESULTS AND DISCUSSION

3.1 Physical Properties of Cotton Growing Soils

In the continuous cotton growing soils of Sangareddy district, bulk density ranged from 1.36 to 1.66 Mg m⁻³ with a mean of 1.49 Mg m⁻³ (Table 2). Chauhan and Bhunia [12], Chaudhari *et al.* [13] and Warhade *et al.* [14] reported similar results. The higher percentage of sand content in the cotton growing soils of the district along with low organic carbon content might be attributed to higher bulk density of the soils [13].

On an average, the soils of the study area contained 59.59 per cent sand, 14.30 per cent silt and 26.06 per cent clay at 0-15 cm depth. The sand content ranged from 41.84 to 78.02 per cent, silt content ranged from 6.74 to 29.60 per cent and clay content ranged from 10.76 to 42.79 per cent. The different textural classes reported were sandy clay loam, sandy clay, sandy loam and loamy sand (Table 3). Similar results were reported by Chaudhari *et al.* [13], Malik *et al.* [15] and Kone *et al.* [16]. Textural classes of all the collected surface soil samples demonstrated their suitability to grow cotton. The wide variation in textural classes might be due to different soil forming processes, *in-situ* weathering and translocation of clay [17].

Table 2. Range, mean, SD and CV of bulk density of the study area.

Total Samples	Range (Mg m ⁻³)	Mean (Mg m ⁻³)	SD (Mg m ⁻³)	CV (%)
112	1.36-1.66	1.49	0.08	5.08

Table 3. Percentage distribution of textural classes in the study area.

Textural Class	Number of samples	Percentage
Sandy clay loam	52	46
Sandy clay	30	27
Sandy loam	16	14
Loamy sand	14	13

3.2 Physico-chemical Properties of Cotton Growing Soils

The soils of continuous cotton growing areas of Sangareddy district were strongly acidic to slightly alkaline in reaction with pH ranging from 4.25 to 7.98 with a mean of 7.30 at 0-15 cm depth, whereas 4.44 to 7.97 with a mean of 7.40 at 15-30 cm depth (Table 4,5). This indicated that pH increased with increase in depth. This might be due to presence of calcium carbonate in the sub-surface layer [18]. Similar results to the findings of Warhade *et al.* [14] and Vasu *et al.* [19]. The reason for lower pH value might be depletion of basic cations by crop and runoff by accelerated erosion and neutral to slightly alkaline nature might be due to presence of high exchangeable bases attributed to low intensity leaching [20].

Electrical conductivity of the soils of Sangareddy district ranged from 0.026 to 0.254 dS m⁻¹ a mean of 0.111 dS m⁻¹ at 0-15 cm depth and 0.020 to 0.241 dS m⁻¹ with a mean of 0.101 dS m⁻¹ at 15-30 cm depth (Table 4,5). The results were in accordance with the results of Warhade *et al.* [14] and Reddy *et al.* [21]. The EC decreased with increase in depth which might be due to the mechanism of the heavy root system of cotton making the soil loose and porous so that added salts leach away resulting in low EC in the soils [30]. The results indicated that the soils were suitable for cotton cultivation [23,31] and the non-salinity of the study area could be attributed to good drainage condition [20].

Organic carbon content of the district was low to high with more than 50 per cent of the soils in low range. The values ranged between 2.03 to 11.52 g kg⁻¹ with a mean of 5.17 g kg⁻¹ at 0-15 cm depth, while, 1.13 to 8.24 g kg⁻¹ with a mean of 3.00 g kg⁻¹ at 15-30 cm depth (Table 4,5). Sadanshiv *et al.* [17], Vasu *et al.* [19] and Sowjanya *et al.* [24] reported similar findings.

The reason for low organic carbon content might be due to faster degradation of organic matter under the semi-arid conditions of the district. The decrease in OC with soil depth might be attributed to the accumulation of plant residues on the soil surface and less movement to the sub-surface horizon due to the rapid rate of mineralization at a higher temperature and adequate soil moisture level [14].

3.3 Chemical Properties of Cotton Growing Soils

The soils of Sangareddy district were low to medium in available nitrogen content varying from 101 to 448 kg ha⁻¹ with a mean of 198 kg ha⁻¹ at 0-15 cm depth, while 91 to 319 kg ha⁻¹ with a mean of 157 kg ha⁻¹ at 15-30 cm depth (Table 4,5). Similar findings were reported by Vasu *et al.* [19], Reddy *et al.* [21] and Sowjanya *et al.* [24]. Cotton, being a deep rooted, heavy feeder crop might lead to nitrogen deficiency in the soils [26]. The reason for low available N status in almost all the soils might be ascribed to low organic carbon content of these soils due to high temperature prevailing in the study area along with low inorganic inputs and rapid loss of applied N by various mechanisms like volatilization, nitrification, denitrification, chemical and microbial fixation leaching and runoff [27,33,35]. Also, decrease in nitrogen content with depth might be due to the low organic carbon in the sub-surface compared to surface soils [22].

The soils were low to high in available phosphorus content ranging from 7 to 41 kg ha⁻¹ with a mean of 20 kg ha⁻¹ at 0-15 cm depth, while, 4 to 39 kg ha⁻¹ with a mean of 15.44 kg ha⁻¹ at 15-30 cm depth (Table 4,5). Similar results were reported by Vasu *et al.* [19], Reddy *et al.* [21], Sowjanya *et al.* [24], Ranjith *et al.* [28] and Ghodeet *et al.* [29]. Decreasing trend of available P was observed with depth. The lower phosphorus content could be due to the fixation of released phosphorus by clay minerals and oxides of iron and aluminium and presence of excess free calcium carbonate, while higher P content might be due to phosphorus confinement to the rhizosphere, due to its immobile nature in soils and indiscriminate use of DAP and other complex fertilizers leading to phosphate buildup [20,24,25].

The cotton growing soils of Sangareddy district revealed wide range of available potassium varying from 154 to 763 kg ha⁻¹ with a mean of 468 kg ha⁻¹ at 0-15 cm depth and 142 to 730 kg ha⁻¹ with a mean of 441 kg ha⁻¹ at 15-30 cm depth (Table 4,5). Similar results were reported by Ingole [18], Vasu *et al.* [19], and Reddy *et al.* [21]. The medium to higher content of available potassium in the soils of the study area could be attributed to the predominance of K-rich micaceous and feldspar minerals in parent material [21]. The available K content was higher in the surface horizons and decreased with depth. This could be attributed to intense weathering, release of labile-K from organic residues, application of K fertilizers and upward translocation of K from lower depths along with capillary rise of ground water [20,29].

The exchangeable magnesium content was recorded in the range of 0.61 to 18.30 meq 100 g⁻¹ with a mean of 6.16 meq 100 g⁻¹ at 0-15 cm depth, while 0.52 to 17.67 meq 100 g⁻¹ with a mean of 5.47 meq 100 g⁻¹ at 15-30 cm depth. Kone *et al.* [16], Sadanshivet *et al.* [17], Reddy *et al.* [21] and Sowjanya *et al.* [24]. Lower magnesium content was recorded in soils of lower pH, whereas in neutral to slightly alkaline soils, magnesium content was in sufficient range. The reason for sufficiency of magnesium content in soils was due to calcareous nature and dominance of smectitic clay minerals in deep to medium black cotton soils [24].

Table 4. Mandal means of the soil physico-chemical properties of the study area at 0-15 cm depth.

S.No.	Mandal	pH	EC	OC	N	P	K	Mg
1	Hathanoora	7.57	0.113	5.97	145	32	437	5.52
2	Kandi	7.47	0.138	6.86	184	41	236	4.89
3	Patancheru	7.50	0.060	3.96	159	18	636	3.81

4	Sangareddy	6.68	0.097	4.70	201	39	265	9.44
5	Kondapur	7.22	0.079	5.05	251	13	369	5.34
6	Sadasivpet	7.16	0.124	6.08	207	24	606	5.16
7	Munipally	7.51	0.133	3.56	204	25	378	6.33
8	Kalher	6.86	0.096	3.52	182	7	165	5.42
9	Manoor	7.68	0.145	4.17	147	16	446	11.27
10	Nagalgidda	7.55	0.239	5.44	209	29	463	8.84
11	Narayankhed	7.40	0.122	4.87	211	22	326	6.40
12	Sirgapoor	7.28	0.099	6.50	152	25	233	9.71
13	Kangti	7.53	0.097	5.27	201	23	555	8.15
14	Jharasangam	7.17	0.120	5.20	192	12	660	3.55
15	Raikode	7.66	0.125	4.56	214	18	645	5.72
16	Kohir	7.45	0.103	6.57	194	11	380	11.23
17	Zaheerabad	6.96	0.083	6.91	176	10	386	4.39
18	Mogudampally	6.98	0.072	4.94	157	16	424	3.83
19	Nyalkal	6.85	0.100	6.17	192	17	683	5.03
20	Chowtkur	7.25	0.073	4.39	162	26	479	8.63
21	Pulkal	6.78	0.095	4.88	202	15	527	4.61
22	Andole	7.33	0.096	4.82	208	396	23	3.65
23	Vatpally	7.35	0.088	6.05	200	356	27	4.85
District Mean		7.30	0.111	5.17	198	20	468	6.16
Range		4.25-	0.026-	2.03-	101-		154-	0.61-
SD		7.98	0.254	11.52	448	7-41	763	18.30
CV (%)		0.63	0.04	2.11	70	9	155	3.27
CV (%)		8.59	36.69	40.83	36	43	33	53.17

*EC: electrical conductivity ($dS m^{-1}$), OC: organic carbon ($g kg^{-1}$), N, P, K: available nitrogen, phosphorus, potassium ($kg ha^{-1}$), Mg: exchangeable magnesium ($meq 100g^{-1}$)

Table 5. Mandal means of the soil physico-chemical properties of the study area at 15-30 cm depth.

S.No.	Mandal	pH	EC	OC	N	P	K	Mg
1	Hathanoora	7.65	0.106	3.07	115	24	412	5.04
2	Kandi	7.58	0.108	3.62	143	36	216	4.42
3	Patancheru	7.68	0.058	1.25	122	16	578	3.59
4	Sangareddy	6.77	0.095	2.78	164	29	237	8.26
5	Kondapur	7.34	0.069	3.24	190	10	342	4.89
6	Sadasivpet	7.28	0.114	4.28	164	15	563	4.41
7	Munipally	7.62	0.123	2.18	160	19	356	5.43
8	Kalher	6.92	0.077	2.34	160	5	150	4.67
9	Manoor	7.81	0.136	2.69	120	13	434	10.50
10	Nagalgidda	7.65	0.225	3.19	179	21	399	8.02
11	Narayankhed	7.52	0.107	2.91	172	18	309	5.65
12	Sirgapoor	7.13	0.087	3.48	130	20	218	7.52
13	Kangti	7.65	0.089	3.46	166	18	539	7.48
14	Jharasangam	7.26	0.111	2.68	148	8	605	3.07
15	Raikode	7.74	0.115	2.54	167	13	622	5.22
16	Kohir	7.54	0.090	3.07	139	9	362	10.66
17	Zaheerabad	6.98	0.056	3.55	131	6	367	4.28
18	Mogudampally	7.09	0.061	2.22	115	11	402	3.16
19	Nyalkal	6.94	0.089	3.41	161	12	643	4.78
20	Chowtkur	7.35	0.071	2.31	128	22	459	7.48
21	Pulkal	6.87	0.085	2.91	161	10	509	4.34
22	Andole	7.50	0.086	2.98	174	19	372	3.00
23	Vatpally	7.48	0.084	3.02	148	20	336	3.61
District Mean		7.40	0.101	5.17	157	15	441	5.47

Range	4.44-7.97	0.020-0.241	2.03-11.52	91-319	4-39	142-730	0.52-17.67
SD	0.63	0.04	1.46	50	7	149	3.05
CV (%)	8.53	39.00	48.62	32	47	34	55.85

*EC: electrical conductivity ($dS\ m^{-1}$), OC: organic carbon ($g\ kg^{-1}$), N, P, K: available nitrogen, phosphorus, potassium ($kg\ ha^{-1}$), Mg: exchangeable magnesium ($meq\ 100g^{-1}$)

3.4 Nutrient Content of Cotton Leaves

The nitrogen content of the collected cotton leaf samples ranged from 0.53 to 3.64 per cent with a mean of 1.49 per cent. The phosphorus content varied from 0.12 to 0.68 per cent with a mean of 0.35 per cent. The potassium concentration of the cotton leaves of the study area ranged from 0.80 to 1.84 per cent with a mean of 1.20 per cent. The total magnesium in the cotton leaves varied from 0.27 to 0.92 per cent with a mean of 0.54 per cent. Similar results were obtained by Rochester [30], Singh *et al.* [31] and Prananto *et al.* [24].

The concentration of a nutrient in the plant is more if the supply of that nutrient is more in the soils [33]. The nitrogen, phosphorus and potassium content were maintained in the plants due to their higher availability during the growing stage of the cotton crop. Any deficiency in plant nutrient content was due to lower level of nutrient available in the soil for plant uptake. As the availability of magnesium content was sufficient in soils, it was maintained in the leaves.

Table 6. Mandal means of nutrient content of cotton leaves.

S.No.	Mandal	N (%)	P (%)	K (%)	Mg (%)
1	Hathanoora	1.51	0.39	1.75	0.63
2	Kandi	0.79	0.31	0.92	0.48
3	Patancheru	1.34	0.26	1.09	0.57
4	Sangareddy	1.28	0.33	1.48	0.48
5	Kondapur	2.22	0.29	1.16	0.58
6	Sadasivpet	1.26	0.41	1.34	0.61
7	Munipally	1.45	0.28	1.24	0.49
8	Kalher	0.99	0.50	0.97	0.44
9	Manoor	1.89	0.41	1.38	0.50
10	Nalgidda	1.41	0.56	1.25	0.52
11	Narayankhed	1.32	0.35	1.12	0.45
12	Sirgapor	2.30	0.43	1.14	0.47
13	Kangti	2.01	0.44	1.05	0.54
14	Jharasangam	1.40	0.32	1.33	0.47
15	Raikode	0.89	0.50	1.42	0.53
16	Kohir	1.54	0.35	1.03	0.49
17	Zaheerabad	1.48	0.28	1.08	0.53
18	Mogudampally	1.36	0.36	1.18	0.59
19	Nyalkal	1.62	0.35	1.07	0.81
20	Chowtkur	0.97	0.26	1.10	0.43
21	Pulkal	1.12	0.25	1.21	0.52
22	Andole	0.89	0.20	1.15	0.59
23	Vatpally	1.74	0.24	1.06	0.57
District Mean		1.49	0.34	1.20	0.54
Range		0.53-3.64	0.07-0.68	0.80-1.84	0.27-0.92
SD		0.58	0.13	0.25	0.14
CV (%)		38.59	38.64	20.90	26.18

3.5 Categorization of Soils into Low/Deficient, Medium and High/Sufficient Categories

The percentage of soil samples falling in low/deficient, medium and high/sufficient categories at 0-15 cm depth and 15-30 cm depth are presented in Table 7. Out of 112 surface soil samples, 51 per cent were low, 37 per cent were medium and 13 per cent were high in organic carbon, while in case of sub-surface soil samples, 92 per cent were in low, 6 per cent were in medium and 2 per cent were in high range of organic carbon. Available nitrogen was low in 90 per cent samples while medium in 10 per cent samples at 0-15 cm depth, while 96 per cent samples were in low and 4 per cent samples were in medium range at 15-30 cm depth. For available phosphorus, 18 per cent were in low, 56 per cent were in medium and 26 per cent were in high range at 0-15 cm depth, while 32 per cent were in low, 57 per cent were in medium and 12 per cent were in high range at 15-30 cm depth. In case of available potassium, 12 per cent were in medium and 88 per cent were in high categories at 0-15 cm depth, while 13 per cent were in medium and 87 per cent were in high categories at 15-30 cm depth. Exchangeable magnesium was deficient in 10 per cent soil samples and sufficient in 90 per cent soil samples at both the depths.

Soil fertility maps showed that available nitrogen was low, available phosphorus was low to high, available potassium was medium to high and exchangeable magnesium was sufficient in the soils of the study area (Fig. 2,3,4,5).

Table 7. Classification of soils into low/deficient, medium and high/sufficient categories based on ratings.

Parameters	Soil Depth (cm)	Ratings (%)		
		Low/ Deficient	Medium	High/ Sufficient
Organic Carbon	0-15 cm	51	37	13
	15-30 cm	92	6	2
Available N	0-15 cm	90	10	-
	15-30 cm	96	4	-
Available P	0-15 cm	18	56	26
	15-30 cm	32	57	12
Available K	0-15 cm	-	12	88
	15-30 cm	-	13	87
Exchangeable Mg	0-15 cm	10	-	90
	15-30 cm	10	-	90

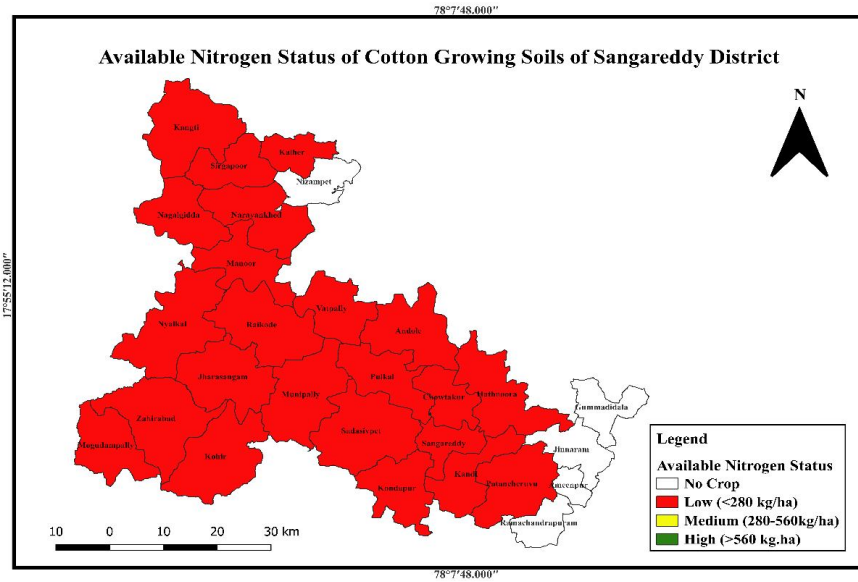


Fig. 2. Available Nitrogen Status in Cotton Growing Soils of Sangareddy District.

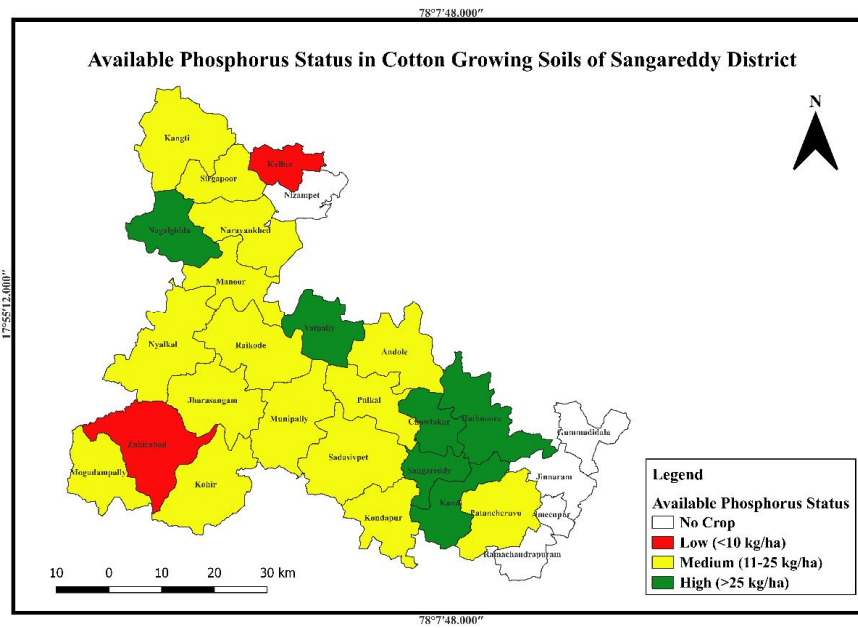


Fig. 3. Available Phosphorus Status in Cotton Growing Soils of Sangareddy District.

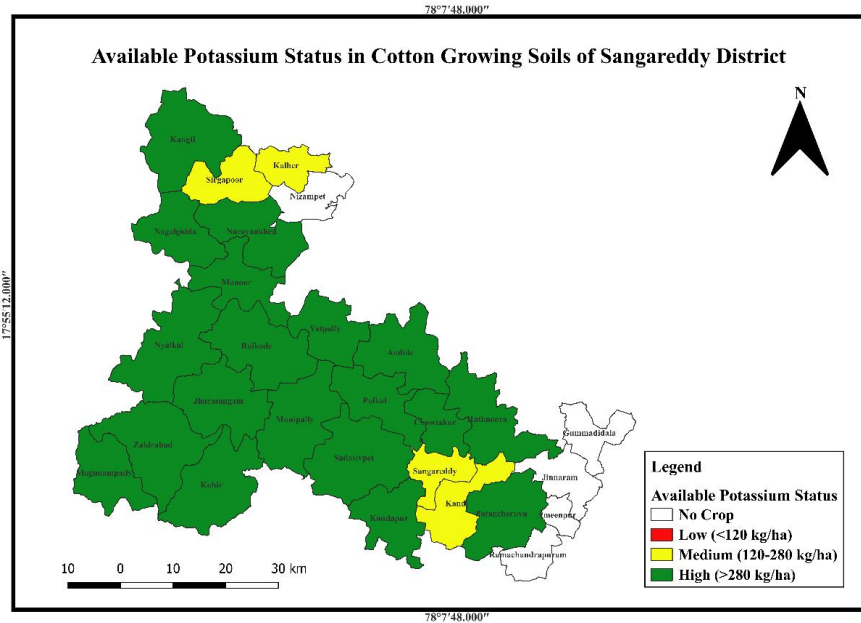


Fig. 4. Available Potassium Status in Cotton Growing Soils of Sangareddy District.

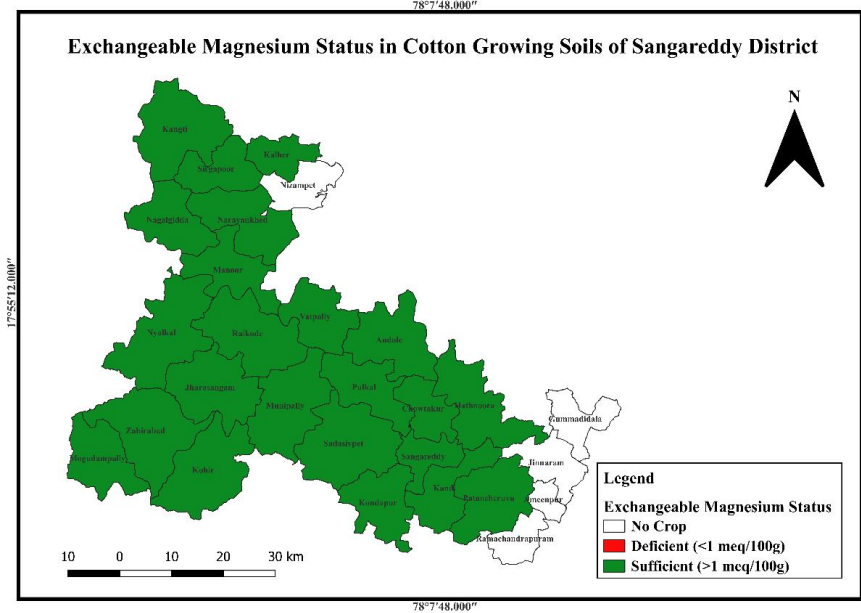


Fig. 5. Exchangeable Magnesium Status in Cotton Growing Soils of Sangareddy District.

4. CONCLUSION

The continuous cotton growing soils of Sangareddy district of Telangana were strongly acidic to slightly alkaline in reaction, non-saline, low to high in organic carbon. Cotton is cultivated in a wide range of soils ranging from sandy clay loam to loamy sand. Soil fertility maps showed that soils of the study area were low in available nitrogen, medium to high in available phosphorus, medium to high in available potassium and sufficient in exchangeable magnesium. Any deficiency in plant nutrient content was due to lower level of nutrient available in the soil for plant uptake. Hence, there is a need of efficient nutrient management in soils of the study area to improve soil health and crop productivity.

REFERENCES

1. ICAR-Central Institute for Cotton Research Nagpur, Maharashtra. All India Coordinated Research Project on Cotton Annual Report (AICRP): 2023-24. Accessed 5 May, 2024. https://aicrip.cicr.org.in/pdf/annual_report/AICRP_AR_2023_24.pdf.
2. Directorate of Economics and Statistics. Planning Department, Ministry of Agriculture–Global Agricultural Information Network. 2023.
3. Weather and Climatology of Telangana. Telangana State Development Planning Society (TSDPS) and Directorate of Economics and Statistics (DES). Planning Department, Ministry of Agriculture – Global Agricultural Information Network. 2022.
4. Bouyoucos GJ. Hydrometer method improved for making particle size analysis of soils. *Agronomy Journal*. 1962; 54: 464-465.
5. Black GR and Hartge KH. Bulk density. In: Klute, A, Ed., *Methods of soil analysis, Part 1-Physical and Mineralogical Methods*. 2nd Edition. Agronomy Monograph 9. American Society of Agronomy-Soil Science Society of America Madison. 1986; 363-382.
6. Jackson ML. *Soil chemical analysis*. Prentice Hall India Pvt. Ltd., New Delhi; 1973.
7. Walkley AJ and Black IA. Estimation of soil organic carbon by the chromic acid titration method. *Soil Science*. 1934; 37: 29–38.
8. Subbaiah BV and Asija GL. Rapid procedure for the determination of available nitrogen in soil. *Current Science*. 1956; 25: 226-230.
9. Olsen SR, Cole CV, Watanabe FS and Dean LA. Estimation of available phosphorus in soils by extraction with sodium bicarbonate. *Circular of United States Department of Agriculture*. 1954; 939.
10. Bray RH and Kurtz LT. Determination of total, organic, and available forms of phosphorus in soils. *Soil science*. 1945; 59 (1): 39-46.
11. Piper CS. 1966. *Soil and Plant Analysis*. Hans Publishers, Bombay; 1966.
12. Chauhan RPS and Bhunia SR. Effect of sulphur and irrigation on productivity of American cotton (*Gossypium hirsutum*). *Journal of Cotton Research Development*. 2010; 24 (1): 64-66.
13. Chaudhari PR, Ahire DV, Ahire VD, Chkravarty M, Maity S. Soil bulk density as related to soil texture, organic matter content and available total nutrients of Coimbatore soil. *International Journal of Scientific and Research Publications*. 2013; 3 (2): 1-8.
14. Warhade RM, Karthikeyan K, Tiwary P, Naitam RK, Kumar N. Characterization and classification of some typical cotton-growing soils of Samudrapur block of Wardha district, Maharashtra. *Journal of the Indian Society of Soil Science*. 2022; 70 (2): 142-148.
15. Malik K, Mehta AK, Thakra SK. Quality parameters, nitrogen content and uptake of cotton cultivar H-1098 and nutrient status of soil influence by different spacing and nitrogen application. *International Journal of Current Microbiology and Applied Science*. 2021; 10 (1): 3058-3066.
16. Kone I, Kouadio KKH, Kouadio ENG, Agyare WA, Owusu-Prempeh N, Amponsah W, *et al*. Assessment of soil fertility status in cotton-based cropping systems in Cote d'Ivoire. *Frontiers in Soil Science*. 2022; 2: 1-12.
17. Sadanshiv NS, Wagh NS, Thelkar SI. Characterization of selected cotton growing soils of Wardha District, Maharashtra. *An Asian Journal of Soil Science*. 2017; 12 (1): 174-180.

Comment [CA2]: Follow the same referencing as provided in the author guidelines

18. Ingole AJ. Studies on nutrient status of cotton growing soil and cotton crop in Nanded district of Maharashtra. M.Sc Thesis. Vasantrao Naik Marathwada Krishi Vidyapeeth, Parbhani, 2018; 431 402, (M.S.), India.
19. Vasu D, Singh SK, Duraisami VP, Jangir A, Butte PS. Fertility status of cotton (*Gossypium hirsutum*) growing soils in Thimmajipet mandal, Mahabubnagar district, Telangana. Andhra Pradesh Journal of Agricultural Sciences. 2016; 2 (1): 10-15.
20. Vandana S, Reddy PVRM, Nagamadhuri K, Reddy PM. Soil fertility status of Gudipala mandal of Chittoor district, Andhra Pradesh for site specific recommendations. Andhra Pradesh Journal of Agricultural Science. 2021; 7 (2):76-80.
21. Reddy GK, Sharma SHK, Jayasree G, Hussain SA, Triveni S, Neelima TL. Soil fertility mapping of Patancheru area, Sanga Reddy district Telangana by using GPS-GIS. The Research Journal of PJTSAU. 2021; 49 (4): 50-60.
22. Rao PJ, Prasad PRK, Kumari AL, Rani PP, Rao CP. Long-term effect of manures and fertilizers on nutrient status under cotton mono-cropping in vertisol. International Journal of Current Microbiology and Applied Science. 2017; 6 (7): 2084-2094.
23. Richards LA. Diagnosis and improvement of saline and alkaline soils. USDA Hand Book No.60. Washington, D.C; 1954
24. Sowjanya TV, Bidari BI, Hebsur NS, Shashidara GB, Navi V. Characterization of Bt Cotton Growing Soils Producing Varying Cotton Yields in Dharwad and Haveri Districts of North Karnataka, India. International Journal of Plant and Soil Science. 2022; 34 (24): 133-141.
25. Bamhaneeya SM, Das A, Tripathi S, Zinzala VJ. Soil available nutrients status and their indexing in cotton growing areas of South Gujarat. International Journal Chemical Studies. 2017; 5 (6): 1717-1724.
26. Jyothi TV, Hebsur N. Evaluation of fertility status of selected Bt cotton growing soils of northern transition zone (zone 8) of Karnataka. The Ecoscan. 2016; 10 (3): 449-455.
27. Malavath R, Mani S. Genesis, classification and evaluation of cotton growing soils in semi-arid tropics of Tamil Nadu. An Asian Journal of Soil Science. 2015; 10 (1): 130-141.
28. Ranjith M, Sridevi S, Ramana M, Rao PC. Physico-Chemical Properties, Nutrient Status and Soil Enzyme Activity of Bt Cotton Growing Soils of Warangal District. Advances in Life Sciences. 2016; 5 (20): 9408-9414.
29. Ghode MK, Vaidya PH, Pawar YS, Adkine, SA, Bagmare, RR. Vertical distribution of available macro and micronutrients in cotton growing soils of Nanded District, Maharashtra. International Journal of Current Microbiology and Applied Sciences. 2020; 9 (2): 3059-3064.
30. Rochester IJ. Phosphorus and potassium nutrition of cotton: Interaction with sodium. Crop and Pasture Science. 2010; 61 (10): 825-834.
31. Singh D, Singh K, Hundal HS, Sekhon KS. Diagnosis and recommendation integrated system (DRIS) for evaluating nutrient status of cotton (*Gossypium hirsutum*). Journal of plant nutrition. 2012; 35 (2): 192-202.
32. Prananto JA, Minasny B, Weaver T. Rapid and cost-effective nutrient content analysis of cotton leaves using near-infrared spectroscopy (NIRS). Peer Journal. 2021; 9:11042.
33. Norman AG. Influence of environmental factors on plant composition. Centennial Symposium. Michigan State University. Nutrition of Plants, Animals, Man. 1955; 14-19.