

QUALITATIVE ASSESSMENT OF FLOURS FROM FIVE VARIETIES OF YAM IN BENUE STATE NIGERIA

ABSTRACT

Need to reduce post-harvest losses of Benue yams birthed this research. The study investigated the functional, pasting properties and nutritional composition of high quality flours produced from five Yam varieties in Benue State, Nigeria. The functional and pasting properties and nutritional composition of flours produced from five yam varieties in Benue State, Nigeria. Their bulk density (0.70-0.84 g/cm³), dispersibility (23.17-39.33g/mL), water (0.87-2.53mL/g) and oil (0.93-2.03mL/g) absorption capacities, swelling index (0.92-2.07mL/g) and capacity ranged from 146.30-265.82%. The peak viscosity, trough, breakdown, final viscosity, set back, peak time and pasting temperature, ranged from 1285.00-4586.33 RVU, 1102.00-4035.00 RVU, 57.07-1046.00 RVU, 1878.33-6428.00 RVU, 688.00-2393.33 RVU - (Rapid Viscometric Unit), 5.40-7.20mins and 81.50-88.85°C., The moisture content, ash, crude fiber, protein, fat, carbohydrates and energy values ranged from 7.61-9.70%, 0.05-3.80%, 0.10-4.82%, 7.77-9.27%, 1.19-1.51 %; 75.09-79.55% and 326.50-343.52 kcal., The Vitamins: A (0.66.41-807.55 mg/100 g), C (23.40-28.73mg/100 g), E (0.08-1.24 mg/100 g), K (0.12-0.74 mg/100 g) and B₁ ranged from 0.73-0.83 mg/100 g) while vitamin D was negligible in all samples., The Minerals sodium, potassium, Calcium, magnesium, phosphorus, manganese and zinc ranged from 47.42-59.73 mg/100 g, 69.01-123.51 mg/100 g, 25.28-33.01 mg/100 g, 39.18-58.02 mg/100 g, 0.04-0.12 mg/100 g, 2.95-5.43 mg/100 g and 0.79-1.25 mg/100 g respectively. Results revealed that, Sample AR (*Amura* yam flour) could be regarded to have the best quality of all parameters evaluated compared to all the other yam flours. Though generally, the physico-chemical properties of the yam flours compared favourably with the wheat flour used as control, therefore, they all exhibited good qualities of flours for baking of confectioneries.

Keywords: Functional properties; Pasting properties; Nutritional composition; Confectioneries, Post-harvest losses.

1. INTRODUCTION

Huge post-harvest losses of yams is painfully a recurring experience of stakeholders in Nigeria, particularly Benue State which produces yams in largest quantities. Most of the yams annually produced are wasted or lost through sprouting, respiration/transpiration leading to rotteness, weight and quality losses of the yam tubers and spoilage due of lack of post-harvest facilities like storage and processing equipment in the country (Shambe, 2017). Yams; member of the monocotyledonous family (*Dioscoreaceae*) are annual root tuber bearing plants with over 600

species. From these; ten are communally and economically important in terms of food, cash and medicine and are favorite staple foods predominantly in Benue State (Joy & Siddhuraju, 2017). Nigeria produces yams in huge quantities, but ninety-five percent of it; is consumed internally in limited value forms. So, though, Yams have great prospective for industrialization, Nigeria continues to import starch, flour, sweeteners and adhesives that can be made from yams. Hence, despite the importance of yams to Nigerians as a component for justifiable food security; the readiness to its maintainable production and industrial development is still uncertain (Verter & Bečvařova, 2015). Thus, the urgency to promote increased utilization of the locally, readily available Yams, reduce their postharvest losses by transforming highly perishable Yam tubers at harvest into shelf stable products cannot be over-emphasized. This can be achieved by transformation of the yam tubers into yam flours to be used for processing of confectioneries like biscuits, cookies, cakes, etc (Oyeyinka *et al.*, 2017). Therefore, this research explored the potential of producing high grade quality flour for production of confectioneries from five yam varieties in Benue State, Nigeria.

2. MATERIALS AND METHODS

2.1 Raw materials

Five varieties of Yams were purchased from Ukum Local Government area of Benue state in the month August 2022. They included *Ogoja*, *Faketsa*, *Hembankwase*, *Amura* (*Discorea rotundata*) and *Gwebe* (Water yam - *Discorea alata*). The yam samples were authenticated by an experienced botanist from the Department of Biological Sciences, Benue State University - Nigeria.

2.2 Method of production of flours

Flours from the yams were produced using method of Oluwole *et al.* (2013) with slight modification as shown in figure 1.

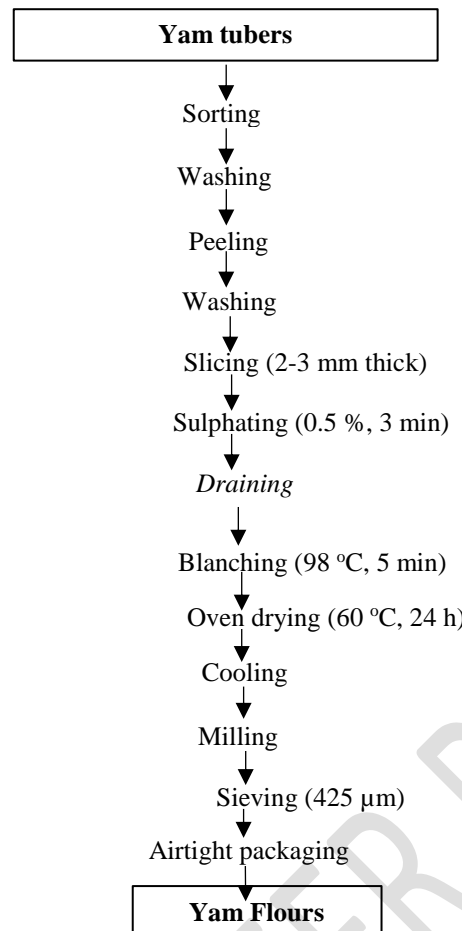


Figure 1. Flow Chart for Production of Yam Flours.

Source: (Oluwole *et al.*, 2013).

2.3 Physico-chemical Analysis

2.3.1 Functional properties of the flours.

Functional properties such as bulk density, dispersibility, water absorption capacity, oil absorption capacity, swelling index, and swelling capacity were determined as described by the standard methods of AOAC (2012).

2.3.2 Pasting Properties of the flours

Pasting properties including Peak viscosity, Trough, Breakdown, Final Viscosity, Set back, Peak time and pasting temperature were assessed using the Rapid Visco-Analyser (ModelRVAseries4; Newport Scientific Pty Ltd., Warriewood, Australia) as described by Oluwole *et al.* (2013).

2.3.3 Proximate Analysis of the flours.

Proximate composition was determined using AOAC (2012) methods. The samples were analyzed for moisture, ash, crude fiber, and crude fat crude protein. Carbohydrate was calculated by difference. Energy content of the flours were determined using Atwater factor as shown in equation 1.

$$\text{Energy (kcal/100 g)} = 4 \times \% \text{Protein} + 9 \times \% \text{Fat} + 4 \times \% \text{Carbohydrate} \quad (1)$$

2.3.4 Vitamin content of the flours.

The methods AOAC (2012) were used to determine vitamins A, B₁, C, D, E and K.

2.3.5 Mineral content of the flours.

Mineral content of samples: Sodium, Potassium, Calcium, Magnesium, Phosphorus, zinc and Manganese were determined using the standard methods described by the AOAC (2012).

3. STATISTICAL ANALYSIS

Determinations were carried out in triplicate. Results are presented as mean value \pm standard deviation and analyzed by analysis of variance (ANOVA) using SPSS software package version 26. Significant differences between means were determined by Duncan multiple range test (DMRT) at 95 % confidence limit.

4. RESULTS AND DISCUSSIONS

4.1 Functional properties of the flours.

Functional properties are the fundamental properties that reflect the complex interaction between the composition, structure, molecular conformation, and physiochemical properties of food components together with the nature of the environment in which these are associated and measured (Ngozi *et al.*, 2021). They are as presented in Table 1. Bulk density (BD) is a measure of heaviness of a flour sample (Bolaji *et al.*, 2021). The BD of the yam flours (0.70-0.84 g/cm³) aligned with the work of Chandra & Samsher (2013), who obtained range of 0.72-0.91 g/cm³ probably because their work also, was from single flours -wheat, rice, millet and potato flours as is 100% yams flours in this study. Higher bulk density is desirable for greater ease of

dispersibility and reduction of paste thickness; while, low bulk density of flour is a good physical attribute when determining transportation and storability (Awolu *et al.*, 2017). Thus, the lesser the bulk density, the more packaging space is required. The bulk density of the AR (**Amura yam flour**) was the lowest (0.70 g/mL). Implying that the AR would require more packaging space than the other yam flours. Dispersibility is the ability of flour to get wet without the formation of lumps in water. The dispersibility was significantly ($p < 0.05$) different amongst the samples. The result obtained is lower than the dispersibilities of the flour blends (64.67 to 70.0 %) reported by Adeola, *et al.* (2017) for sorghum, pigeon pea and Soybean flour blends. The lower values have important significance; this infers that, all the flours will comparatively reconstitute effortlessly to fine consistent dough/batter during mixing (Adeola, *et al.* 2017). Water absorption capacity (WAC) describes flour-water association capability under limited water quantity. Presence of carbohydrates in higher concentration encouraged hydrogen bonding between polar side chains of flour constituents and water and leads to rise in WAC (Wani & Qadir, 2023). From results, the lowest value (0.87 ml/g) was observed in WF (**Wheat flour**) and differ significantly ($p > 0.05$) from all the flours which were higher. The WAC of the yam flours ranged from 1.93-2.53 ml/g **which** compared favorably with 2.32-2.76 ml/g reported for *yam* flours by Ayo *et al.* (2017). It has been suggested that flours with such WAC as seen in this study will be very useful in bakery products such as **cookies**, **biscuits** etc., as this could prevent staling by reducing moisture loss (Bolaji *et al.*, 2021). Thus **ability** of these flours to absorb and retain water indicates they would **perform** better in texture and baked products which aligns with Olaitan *et al.* (2017). Oil absorption capacity (OAC), measures capacity of **a food** material to absorb oil. **Oil improves** the flavor retaining capacity of flour and mouth feel, which is very important in food formulations (Ohizua *et al.*, 2017). **The** OAC of the Yam flours which ranged 1.03-2.03 mL/g and agrees with the value (1.18 mL/g) of Olumurewa *et al.* (2019). The mechanism of fat absorption is attributed mainly to the physical entrapment of

oil and the binding of fat to a polar chain of protein. The protein in foods stimulate fat absorption, hence OAC of foods increase with increased protein content (Chandra *et al.*, 2015). There was significant ($p < 0.05$) difference amongst samples. The highest AR and lowest GB (*Gwebe yam flour*). This implies; AR had highest protein content and would retain flavor more. GB was lowest in protein. this is in consonance with the work of Wani & Qadir (2023) who reported that polishing of rice which reduce concentration of proteins led to significant ($P < 0.05$) reduction in OAC of rice flours. Thus, AR will potentially be useful in structural interaction in food especially in flavour retention, improvement of palatability and extension of shelf life of baked products where fat absorption is desired. Swelling index (SI) of flours depends on size of particles, type of variety and types of processing methods under gone. There were significant ($P < 0.05$) difference in the SI of all Samples. The Hk (*Hembakwase yam flour*) sample had the highest SI (2.07ml/g) which could be attributed to its variety of yam (Chandra & Samsher, 2013). The lowest SI was observed in WF which implied that, the processing it underwent had significant effect on its particle size. Swelling capacity (SC) is a function of the process conditions, nature of the material and type of treatment. The SC is used in the determination of the amount of water that food samples can absorb and the degree of swelling within a given time. High SC has been reported as part of the criteria for a good quality product (Adebayo-Oyetero *et al.*, 2013).

Table 1 Functional properties of the flours

SAMPLES	Bulk Density (g/cm ³)	Dispersibility (g/mL)	Water Absorption Capacity (mL/g)	Oil Absorption Capacity (mL/g)	Swelling Index (mL/g)	Swelling Capacity (%)
WF (Wheat flour-Control)	0.79 ^e ±0.00	23.17 ^e ±0.29	0.87 ^e ±0.06	1.07 ^b ±0.06	0.92 ^e ±0.07	146.30 ^f ±0.58
OG (<i>Ogoja</i> yam flour)	0.84 ^a ±0.00	37.33 ^b ±0.58	2.47 ^a ±0.06	1.03 ^b ±0.06	1.25 ^d ±0.06	154.94 ^c ±0.05
FT (<i>Faketsa</i> yam flour)	0.81 ^b ±0.00	27.33 ^d ±0.58	2.03 ^b ±0.06	1.07 ^b ±0.06	1.80 ^a ±0.04	244.86 ^b ±0.50
HK (<i>Hembakwase</i> yam flour)	0.79 ^e ±0.01	33.50 ^c ±0.58	2.03 ^b ±0.06	1.03 ^b ±0.06	2.07 ^a ±0.04	265.82 ^a ±0.13
AR (<i>Amura</i> yam flour)	0.70 ^d ±0.01	39.33 ^a ±0.58	1.93 ^b ±0.06	2.03 ^a ±0.06	1.61 ^b ±0.05	232.18 ^c ±0.14
GB (<i>Gwebe</i> yam flour)	0.80 ^b ±0.00	27.50 ^d ±0.50	2.53 ^a ±0.06	0.93 ^c ±0.06	1.44 ^c ±0.07	218.08 ^d ±0.00

Values are mean ± SD of triplicate determination. Samples with different superscripts within the same column were significantly (p<0.05) different.

4.2 Pasting properties of the flours:

Pasting property is an index for forecasting a food's capacity to form a paste on exposure to heat applications. Pasting occurs after or simultaneously with gelatinization. Food starch is altered into solid state **that is** advantageous in several food systems through gelatinization which is an endothermic process, resulting in derangement of molecular order inside the starch granules (Iwe *et al.*, 2017). Pasting properties of the flours are as presented in Table 2. There was significant ($p < 0.05$) difference in all the parameters of the samples examined. The peak viscosity (PV) is the maximum viscosity attainable during the heating cycle. It indicates the water-binding capability of starch and capacity of the starch to swell before it physically breaks down (Onyeneke, 2019). Products that have high PV do not swell easily, requires a lot of energy to initiate swelling, gelatinization and have high pasting temperatures. PV also shows the viscous load likely to be encountered during mixing (Eze *et al.*, 2022). In this study, the PV ranged 1285.00-4586.33RVU, the lowest in AR and highest in OG. Indicating that OG has high amylose and starch content and will form a thicker viscous gel on cooking, more than the other flours. Hence, may be more suitable for products which require high gel strength. **Trough viscosity (also referred to as shear thinning, holding strength, or hot paste viscosity) is considered as a measure of the breakdown of hot starch paste during cooling. It is the minimum viscosity value in the constant temperature phase of the RVA profile which usually occurs around the commencement of sample cooling (Oluwamukomi & Jolayemi, 2012).** Higher values of trough indicate a paste with less stability to breakdown and prone to disintegration. Lower values suggest suitability for formation of stable paste (Adeloye *et al.*, 2020). High paste stability is a requirement for industrial users of starch because drastic changes in paste during and after processing could result to undesirable textural changes (Eze *et al.*, 2022). The hot paste viscosity (Trough) of the yam flours ranged 1102.00-4035.00RVU. There were significant ($p < 0.05$) difference in all the samples. OG had highest holding strength

4035.00RVU than the other flours, while AR recorded the lowest 1102.00 RVU. By implication; OG has less stability to breakdown and prone to disintegration. While AR would be suitable for formation of stable paste and could be targeted for industrial uses. Breakdown viscosity is a measure of vulnerability of cooked starch granules to degeneration and is shown to affect the stability of flour products. It illustrates the capability of flour to tolerate controlled heating and use of shear in the course of food processing (Adeloye *et al.*, 2020). The ability of a mixture to withstand heating and shear stress that is usually encountered during processing is an important factor for many processes especially those requiring stable paste and low retrogradation/syneresis. The lower the value the more stable the starch gel. Higher values of breakdown are associated with higher peak viscosities (Oluwamukomi & Jolayemi, 2012). Starches with low paste stability and high breakdown have very weak cross-linking within granules indicating less stability to paste breakdown (Lin *et al.*, 2023). There was significant ($p < 0.05$) difference in breakdown viscosities of all samples ranging from 674.00-57.07 RVU. GB had the highest value while HK had lowest, followed by AR (184.00 RVU). HK value was close to the value obtained by Oke & Bolarinwa (2012) for 24h fermented cocoyam flour (58.83 RVU). This suggests that HK and AR have better chances of withstanding heating and shear stress during processing, hence would fit products that need cohesiveness like biscuits, cookies or products that require good mouldability dough like pounded yam flour (Eze *et al.*, 2022) of which, these flours are targeted for. Final viscosity also, called Cold paste viscosity (CPV) is the viscosity at end of the test. It shows the capacity of the material to form a viscous paste or gel after cooking and cooling. And also indicates the effect of texture modifiers on the physicochemical resistance of the paste to shear force during stirring. It is the most commonly used parameter to define the quality of a particular starch-based sample (Adeloye *et al.*, 2020). During the final cycle of cooling from 95°C to 50°C, the viscosity increased to a final viscosity owing to the alignment of the chains of amylose resulting in formation of a gel structure. The

values, 1878.33-6428.00RVU, obtained for final viscosity of the flours indicate better final viscosity quality. It is important in predicting and defining the final textural quality of the product in terms of springiness (drawability). High CPV implies firm gel formation after cooking and cooling to 50°C rather than a viscous paste (Oluwamukomi & Jolayemi, 2012). Flours with lower final viscosity could be suitable for nutritious and less viscous complementary foods (Adeloye *et al.*, 2020). The “setback” value is related to the amylose content, retrogradation and reordering of starch molecules. High set back is associated with syneresis, or weeping, during freeze/thaw cycles (Unaeze *et al.*, 2022). The setback refers to viscosity after cooling to 50°C of cooked paste. It is a stage where retrogradation or re-ordering of starch molecules occurs. It is a tendency to become firmer with increasing resistance to enzymic attack (Oluwamukomi & Jolayemi, 2012). Flours with higher setback values are susceptible to retrogradation, syneresis and lower digestibility. Flours with low setback may have low values of amylose which have high molecular weight. This suggests highly digestible food product could be made from flours having low setback value. Data from this study showed HK and AR with lower setback values 688.00 and 777.00RVU respectively, hence low rate of retrogradation and syneresis and higher digestibility. The setback revealed the gelling ability or retrogradation tendency of the amylose. Thus; the highest value (2393.33 RVU) observed, suggested that the highest amylose retrogradation occurred in OG (Adeloye *et al.*, 2020). The peak time is a measure of the cooking time taken to cook to reach the maximum starch gelatinization and peak viscosity. Low peak time is indicative of ability to cook fast (Adeloye *et al.*, 2020). AR had lowest cooking time (5.40Min), while OG had highest cooking time (7.20min). This could be due to differences of the yam varieties. The time to attain peak viscosity of the flours (5.4-7.20mins) were higher than time reported by Oluwamukomi & Jolayemi (2012) for gari which ranged between 3.93-4.07 min. Probably, due to the toasting processing resulting to partially gelatinization that gari undergoes in the course of its

production. Pasting temperature (PT) is a measure of the minimum temperature necessary to cook a given food sample (Adeloye *et al.*, 2020). It is the temperature at the onset of gelatinization at which irreversible swelling of the starch granule occurs, resulting to a viscous paste formulation in aqueous solution (Wahab *et al.*, 2016). It can have inferences for the stability of other components in a formula and also show energy costs. The PT ranged 81.50 - 88.85°C; AR lowest and OG highest. This result is consistent with Oluseye *et al.* (2018) who got PT of 81.81 and 84.80 °C for 100% *D. cayenensis* and *D. alata* respectively. Confirming that, these yam flours would form thick paste/dough for baking to obtain good quality baked products. The high pasting temperature of OG indicated the presence of starch that is highly resistance to swelling and rupturing (Wahab, *et al.*, 2016). Generally, the pasting temperatures of the flours were lower than boiling temperature; thus all flours could form a paste in hot water below boiling point. Amongst all the Yam samples, it was samples HK and AR that seem to had competed favorable with WF - the control sample (Wheat flour); particularly AR.

Table 2: Pasting properties of the flours

SAMPLE	Peak Viscosity (RVU)	Trough (RVU)	Breakdown (RVU)	Final Viscosity (RVU)	Set back (RVU)	Peak Time(Min)	Pasting Temp (°C)
WF	2170.33 ^e ±1.53	1124.00 ^c ±1.00	1046.00 ^a ±1.00	2109.00 ^e ±1.00	985.00 ^d ±1.00	6.93 ^b ±0.01	88.80 ^a ±0.10
OG	4586.33 ^a ±1.53	4035.00 ^a ±2.00	551.33 ^e ±0.58	6428.00 ^a ±1.00	2393.33 ^a ±3.52	7.20 ^a ±0.20	88.85 ^a ±0.02
FT	3837.00 ^e ±1.00	3470.00 ^b ±1.00	367.00 ^d ±2.00	4693.00 ^c ±1.00	1223.00 ^c ±1.00	6.10 ^{cd} ±0.10	84.13 ^c ±0.15
HK	2915.00 ^d ±1.00	2858.00 ^d ±1.00	57.07 ^f ±0.21	3546.00 ^d ±1.00	688.00 ^a ±1.00	5.93 ^{de} ±0.10	83.90 ^d ±0.20
AR	1285.00 ^f ±1.00	1102.00 ^f ±1.00	184.00 ^e ±1.00	1878.33 ^f ±0.58	777.00 ^b ±1.00	5.40 ^e ±0.10	81.50 ^e ±0.10
GB	3933.00 ^b ±2.00	3259.00 ^c ±2.00	674.00 ^b ±1.00	5154.00 ^b ±1.00	1895.33 ^b ±1.53	6.20 ^c ±0.10	87.25 ^b ±0.01

Values are mean ± SD of triplicate determination. Samples with different superscripts within the same column were significantly (p<0.05) different.

* RVU - (Rapid Viscometric Unit)

4.3 Proximate Composition and Energy Value of the flours.

Proximate composition of the flours are presented in Table 3.

The proximate composition of foods is used to determine the nutritive value and acceptability of the food product. Moisture content (MC) of flour is very important for its shelf life, the lower flour moisture, the better its storage stability. The MC of the flours ranged from 7.61- 9.70%. The least being GB and highest HK. There was significant ($P < 0.05$) difference amongst all the samples. The MC result, indicated that all flours had MC below 10% which showed good keeping quality of the flours. This aligned with findings of Ojo *et al.* (2017) who also reported low moisture of flours as 7.68–10.55%. The MC of all the flours were below the recommended safe level (12–13%) for storage of flour. Implying that the flours might store for a long period without microbial contamination, if properly packaged in an airtight material (Adebowale *et al.*, 2017). Ash refers to the inorganic residue in any food material and it directly signifies the total amount of minerals present within the food. Less was observed in FT and higher in AR. The ash content of yam flours (2.50-3.80%) fall within the range as reviewed by Obidiegwu *et al.* (2020) which ranged from 0.1%-8.8% and is comparable to the values gotten in the work of Ojo *et al.* (2017) where the ash content of bitter yam and water yam flours were 2.46% and 3.33%. The relatively high protein contents observed in the yam flours was in consonance with the work of Franklin and Thompson (1971) who reported protein values of *D. alata* as average of 8.19% protein, with a range of 6.72 to 9.75%, and white Yams (*Dioscorea spp.*) as 6.3-13.4% crude protein. They explained that; protein content tended to be highest in upper or inner (oldest) portions of the yam tubers. The yams in this research were old yam gotten in the month of August 2022 when yams are out of stock. Thus; could be the reason for their relatively high protein (7.77-9.27%) content. This aligned with Obidiegwu *et al.* (2020) who reported a study on the effect of storage on nutritional content of yam which showed an increase in protein content as 13.0%–14.6%. Proximate content of the water yam (*Gwebe*) in this work were within

similar ranges to that of water yam reported by Ojo *et al.* (2017) as 7.05±0.15 (protein), 1.95±0.10(fat), 10.47±0.10(moisture), 3.33±0.00(ash), 3.33±0.00(fiber) and 73.76±0.71(carbohydrate). Also, the protein and starch content of the water yam (*Gwebe*) aligned with range reported by Djeri,*et al.* (2015) who had crude protein content of 7.4%, starch content of 75–84%, respectively. Fat had been reported in yam. However, in very small fraction and have a great impact on the functionality of starch. A wide range of concentrations of fat between 0.03% and 10.2% have been reported by Obidiegwu *et al.* (2020). The Yam flours had very low fat values 1.19-1.34% indicating the flours are not good source of fat. The carbohydrate content generally was high across all the flours and this account for high energy calories observed in the flours.

Table 3: Proximate Composition and Energy Value of the flours

Samples	Moisture (%)	Ash (%)	Fiber (%)	Protein (%)	Fat (%)	Cho (%)	Energy (Kcal)
WF	9.40 ^b ±0.16	1.57 ^e ±0.14	0.10 ^f ±0.01	8.41 ^b ±0.40	1.51 ^a ±0.42	79.01 ^b ±0.29	343.52 ^a ±4.39
OG	9.69 ^a ±0.05	3.22 ^b ±0.13	2.81 ^d ±0.05	9.26 ^a ±0.05	1.32 ^a ±0.17	75.09 ^f ±0.31	330.51 ^c ±0.81
FT	9.20 ^{bc} ±0.04	2.50 ^d ±0.12	4.59 ^b ±0.17	8.32 ^b ±0.26	1.24 ^a ±0.10	76.15 ^d ±0.26	330.00 ^e ±1.23
HK	9.70 ^a ±0.23	2.81 ^c ±0.05	4.82 ^a ±0.12	7.82 ^c ±0.09	1.34 ^a ±0.02	75.51 ^e ±0.29	326.50 ^d ±1.16
AR	8.27 ^c ±0.03	3.80 ^a ±0.07	2.91 ^c ±0.02	9.27 ^a ±0.05	1.34 ^a ±0.02	76.41 ^c ±0.06	335.68 ^b ±0.21
GB	7.61 ^d ±0.36	3.76 ^a ±0.04	2.12 ^e ±0.01	7.77 ^c ±0.01	1.19 ^a ±0.12	79.55 ^a ±0.42	340.10 ^a ±2.44

Values are mean ± SD of triplicate determination. Samples with different superscripts within the same column were significantly (p<0.05) different.

4.4 Vitamin content of the flours (mg/100g).

Vitamins A,C,E,D,K and B₁ content of the flours are presented in Table 4.

Vitamin A; ranged from 66.4-807.55 mg/100g which is much higher than range 17.70-23.00 mg/100g reported by Ojo *et al.* (2017). Probably as a result of the processing method engaged to produce the yam flours. Highest in AR and lowest in FT. There was significant ($p < 0.05$) difference amongst the samples. Vitamin A is fat-soluble and plays central role in various aspects of health; including vision health, antioxidant activity, immune boosting, maintenance of skin cells, reducing inflammation, growth and development (Khadim & Al-Fartusie, 2021). The range of vitamin C; 21.06-28.73 mg/100g was close to values of Djeri *et al.* (2015) where vitamin C content ranged from 23.40-28.73mg/100g. Present result is also in consonance with report by Adebowale *et al.* (2018) where vitamin C, ranged from 21.06-28.73mg/100g. Vitamin C is water-soluble, an antioxidant, important for skin, bones, and connective tissue, stimulate the production of white blood cells, supports wound healing, helps the body absorb iron (Seth *et al.*, 2024), lower risk of developing cataracts and age-related macular degeneration, lessen the severity and extent of respiratory infections and also helpful for asthmatic persons by decreasing inflammation in the airways (Gombart *et al.*, 2020). Vitamin E, which is a fat-soluble, plays an imperative role in the strengthening of immune function, maintenance of healthy skin/eyes, strong antioxidant that aids in the absorption of iron in the body (Khadim & Al-Fartusie, 2021). Its range 0.08-0.25mg/100g compares favorably with 0.33-0.37mg/100g reported by Ojo *et al.* (2017). Vitamin D was detected in just trace amount in all the samples. Vitamin k ranged highest (0.74mg/100g) in AR and lowest (0.12mg/100g) in GB indicating that the AR would contribute more the benefits of Vitamin K. It is fat-soluble, best known for its role in helping blood to clot coagulate properly, maintain bone health, keep blood vessels functioning properly (Seth *et al.*,2024). The range of vitamin B₁ (thiamine) was from 0.73-0.83mg/100g and was within the range 0.18–1.05mg/100g gotten by Adebowale *et al.* (2018).

The lower values obtained in our study may be as a result of genetic, interspecies variations and environmental factors. Thiamine is essential for glucose metabolism, proper functioning of the nerves, digestion, muscles and hearts (Okoye *et al.*, 2024).

UNDER PEER REVIEW

Table 4. Vitamin content of the flours (mg/100g)

SAMPLES	VIT A	VIT C	VIT E	VIT D	VIT K	VIT B ₁
WF	123.13 ^e ±0.84	26.68 ^e ±0.06	0.18 ^c ±0.01	0.00 ^e ±0.00	0.14 ^d ±0.01	0.77 ^b ±0.01
OG	349.25 ^b ±0.95	26.56 ^d ±0.06	0.12 ^d ±0.02	0.00 ^c ±0.00	0.16 ^c ±0.01	0.75 ^b ±0.01
FT	66.41 ^f ±0.82	27.02 ^b ±0.06	0.11 ^d ±0.01	0.00 ^b ±0.00	0.22 ^b ±0.01	0.74 ^c ±0.01
HK	158.14 ^c ±0.82	21.06 ^f ±0.06	0.25 ^b ±0.02	0.00 ^d ±0.00	0.15 ^{bc} ±0.01	0.73 ^c ±0.01
AR	807.55 ^a ±1.22	28.73 ^a ±0.01	1.24 ^a ±0.01	0.01 ^a ±0.01	0.74 ^a ±0.02	0.83 ^a ±0.00
GB	131.41 ^d ±0.81	23.40 ^e ±0.06	0.08 ^e ±0.02	0.00 ^f ±0.00	0.12 ^e ±0.01	0.76 ^b ±0.01

Values are mean ± SD of triplicate determination. Samples with different superscripts within the same column were significantly (p<0.05) different.

4.5 Mineral content of the flours (mg/100g).

Minerals are inorganic elements essential for the normal functioning of the body and are presented in table 5. They are required in smaller quantities and are not destroyed by heating. Sodium(Na) is the principal extracellular cation and is used for acid-base balance and osmoregulation, stimulates cell proliferation, protein synthesis, increase cell mass, maintaining blood pressure and fluid balance (Iombor *et al.*, 2019). The Na ranged 47.42-59.51mg/100g. GB had lowest (47.42 mg/100g) and FT highest (59.51 mg/100g). The WHO recommends Na intake per day as 500 and 400 mg for adult and children respectively. Hence, flours in this work are not sufficient sources of Na, but could be perceived as a positive factor in low salt diets (Godfrey *et al.*,2023). Potassium consumption is essential in comparatively huge quantity in the body because it functions as a vital electrolyte in the nervous system, regulates acid-base balance, triggers nerve and muscle function, maintenance osmotic pressure of the body fluids (Ufof *et al.*, 2018). The potassium content of HK(69.01mg/100g), FT(74.02mg/100g) and OG(85.02mg/100g) falls within the range 78.34mg/100g as reported by Okoye *et al.* (2024) while the potassium content of GB(98.02mg/100g) and AR(123.51mg/100g) were higher than their values. The high values, makes them better potassium source than other tubers and possibly suitable for hypertensive individuals (Obidiegwu *et al.*, 2020). Calcium content ranged 25.28-33.01mg/100g. It plays key role in muscle function, formation and strengthening of bones, teeth, conducting nerve impulses, blood clotting and maintaining normal heartbeat (Araujo *et al.*, 2016). Ages 18-50years require 1,000mg of calcium/day while less than 18years need more concentration of 1,300mg calcium for developing bones and teeth (Omohimi *et al.*, 2018). Magnesium controls protein synthesis, blood glucose, blood pressure regulation, muscles and nerve functions. The RDA of Mg for adult is 350 and 170 mg/day for children (Godfrey *et al.*, 2023). In this work; range is 39.18-58.02 mg/100g. Phosphorus helps to strengthen bones and teeth, particularly in children and breastfeeding mothers. The RDA for both children and adults is 800mg/day (Godfrey *et al.*, 2023). Our data showed range of 2.95-

5.43mg/100g. The low Phosphorus concentration of the yam flours indicates that their consumption alone will not supply the recommended RDA of 800 mg/day for both adults and children, except when consumed with other Phosphorus rich foods Omohimi *et al.* (2018). Zinc functions to; improves immune system, insulin function, cell growth, wound healing, cell development and replication, Okoye *et al.* (2024). RDA of Zn is 8mg/day for females and 11mg/day for males (Omohimi *et al.*, 2018). Its range 0.80-1.25mg/100g is below the RDA. However, it falls within range of 1.78 mg/100g reported by Okoye *et al.* (2024). Manganese aids in formation of connective tissues, bones, blood clotting factors, sex hormones, fat and carbohydrate metabolism, calcium absorption and regulating blood sugar level (Okoye *et al.*, 2024). RDAs for females and males are 1.2 and 2.3 mg/day (Omohimi *et al.*, 2018) which is higher than the range in this work (0.04-0.12mg/100g). Thus, need to be combined with other foodstuffs in the diets to make up for inadequacy. Ingestion of foods made from our yam flours with inclusion of dark green leafy vegetables could make up for inadequacies (Omohimi *et al.*, 2018). Overall, our data revealed that; AR generally had higher mineral content above the other yam flours.

Table 5. Minerals Content of the flours (mg/100g)

SAMPLE	Na	K	Ca	Mg	Mn	P	Zn
WF	59.73 ^a ±0.06	92.02 ^c ±0.02	32.72 ^b ±0.02	53.22 ^c ±0.02	0.06 ^c ±0.00	5.05 ^b ±0.00	0.79 ^f ±0.00
OG	49.52 ^e ±0.02	85.02 ^d ±0.02	25.28 ^f ±0.02	47.64 ^d ±0.03	0.08 ^b ±0.00	5.43 ^a ±0.01	0.80 ^e ±0.01
FT	59.51 ^b ±0.01	74.02 ^e ±0.02	29.58 ^c ±0.03	55.84 ^b ±0.01	0.06 ^c ±0.00	4.35 ^{bc} ±0.00	0.85 ^d ±0.00
HK	54.21 ^f ±0.01	69.01 ^f ±0.01	25.81 ^e ±0.02	41.27 ^e ±0.02	0.04 ^d ±0.01	4.03 ^b ±0.01	1.02 ^c ±0.02
AR	54.02 ^d ±0.02	123.51 ^a ±0.02	33.01 ^a ±0.01	58.02 ^a ±0.02	0.12 ^a ±0.01	4.55 ^c ±0.43	1.25 ^a ±0.01
GB	47.42 ^f ±0.02	98.02 ^b ±0.02	28.59 ^d ±0.02	39.18 ^f ±0.02	0.04 ^d ±0.00	2.95 ^d ±0.01	1.04 ^b ±0.01

Values are mean ± SD of triplicate determination. Samples with different superscripts within the same column were significantly (p<0.05) different.

5. CONCLUSION

Data analyzed showed that the sample AR had higher values of most of the minerals, highest values of all vitamins and protein content hence would retain flavor more than the other flours. It had lowest Peak Velocity value implying its flour will swell easily, requires less of energy to initiate swelling, gelatinization and have low pasting temperatures. It had lowest trough and setback values suggesting AR would be suitability for formation of stable paste with low rate of retrogradation and syneresis and higher digestibility. Also, AR had lowest cooking time, indicative of its ability to cook fast. Thus; sample AR could be considered to have best quality of all parameters evaluated and could be targeted for industrial uses. Generally, the yam flours exhibited good quality functional and pasting properties and demonstrated relatively good quality in terms of nutritional composition. They also competed favorably with the standard wheat flour in all parameters investigated, so are recommended to be used partially or wholly to replace wheat in confectioneries production.

Disclaimer (Artificial intelligence)

Option 1:

Author(s) hereby declare that NO generative AI technologies such as Large Language Models (ChatGPT, COPILOT, etc) and text-to-image generators have been used during writing or editing of manuscripts.

Option 2:

Author(s) hereby declare that generative AI technologies such as Large Language Models, etc have been used during writing or editing of manuscripts. This explanation will include the name, version, model, and source of the generative AI technology and as well as all input prompts provided to the generative AI technology

Details of the AI usage are given below:

- 1.
- 2.
- 3.

REFERENCES

- Adebayo-Oyetero, A.O., Olatidoye, O.P., Ogundipe, O.O.&Abayomi, H.T.(2013).Nutrient composition, functional and organoleptic properties of complementary food formulated from sorghum, walnut and ginger. *Journal of Agricultural Science and Technology*, **9**(2), 321–333.
- Adebowale, A.A., Obadina, A.O., Kajihansa, E.O., Adegunwa, O.M., Sanni, O.L.,&Tomlins, K. (2018). *The antinutritional and vitamin composition of high- - quality yam flour as affected by yam specie , pretreatment and drying method*, 1–6.
- Adebowale, A.A., Owo, H.O., Sobukola, O.P., Obadina, O.A., Kajihansa, O.E., Adegunwa, M.O., Sanni, L.O.,&Tomlins,K.(2017). Influence of storage conditions and packaging materials on some quality attributes of water yam flour. *Cogent Food & Agriculture*, **10**(1), 1–26.
- Adeloye, J.B., Osho, H.&Idris, L.O.(2020). Defatted coconut flour improved the bioactive components , dietary fibre, antioxidant and sensory properties of nixtamalized maize flour. *Journal of Agriculture and Food Research*, **2**, 1–10.
- Adeola, A.A., Shittu, T.A., Onabanjo, O.O., Oladunmoye, O.O.&Abass, A. (2017). Evaluation of Nutrient Composition , Functional and Sensory Attributes of Sorghum , Pigeonpea and Soybean Flour Blends As Complementary Food in Nigeria. *Agronomie Africaine Sp.*, **29**(2), 47–58.
- AOAC. (2012). Official methods of analysis (18th ed). *Gaithersburg, USA: AOAC Inter.*
- Araujo, R.P., Leonel, F.D.&Santos, F. (2016). The Biological Roles of Calcium : Nutrition , Diseases and Analysis. In *Research gate*,1–10.
- Awolu, O.O., Oyebanji, O.V. & Sodipo, M.A. (2017). Optimization of proximate composition and functional properties of composite flours consisting wheat, cocoyam (*Colocasia esculenta*) and bambara groundnut (*Vigna subterranea*). *International Food Research Journal*, **24**(1), 268–274.
- Ayo, J.O., Ojo, M.O., Omelagu, C.A., Ayila,D. & Okpasu, A.A. (2017). Phytochemical, Chemical composition and Functional properties of yam cultivars grown in Wukari, Nigeria. *Nigerian Journal of Pure and Applied Science*, **9**(2), 60–71.
- Bolaji, O.T., Kamoru, M.A. & Adeyeye, S.A.O.(2021). Quality evaluation and physico-chemical properties of blends of fermented cassava flour (lafun) and pigeon pea flour. *Scientific African*, **12**, e00833.
- Chandra, S.,&Samsher.(2013). Assessment of functional properties of different flours. *African Journal of Agricultural Research*, **8**(38),4849–4852.

- Chandra, S., Singh, S.&Kumari, D. (2015). Evaluation of functional properties of composite flours and sensorial attributes of composite flour biscuits. *Food Sci Technol . 2015 Jun*;52(6):3681–3688.
- Djeri,B.,Tchobo,P.F., Adjrah,Y., Karou,D.S., Ameyapoh,Y., Soumanou, M.M.&Souza, C. (2015). Nutritional potential of yam chips (*Dioscorea cayenensis* and *Dioscorea rotundata* Poir) obtained using two methods of production in Togo. *African Journal of Food Science*, 9(5), 278–284.
- Eze, P.C., Ike,S., Oluka, C.& Eze, N.(2022). Determination of the Rheological Characteristics Of Some Varieties of New Rice for Africa (Nerica) Relevant to its Processing. *Bidlid*, 26(2), 79–82.
- Godfrey, E.O., Esther, I.I. & Faith,O.(2023). Proximate Composition, Levels of Some Essential Mineral Elements and Anti-Nutritional Components of Some Yam Species Found in Minna,Niger State.*Biology,Medicine&Natural Product Chemistry*,12(1), 9–16.
- Gombart, A.F., Pierre, A.&Maggini, S. (2020).A review of micronutrients and the immune system–working in harmony to reduce the risk of infection. *Nutrients*, 12(1), 1–5.
- Iombor, T.T.,Adikwu, G.E& Oche, V.A.(2019).*Effects of Raphia sudanica Mesocarp and Arrowroot (Tacca involucrata) Flour Incorporation on the Chemical Composition of Sorghum Composite Spaghetti*. 484–502.
- Iwe, M.O., Michael,N.,Madu, N.E.,Obasi, N.E.,Onwuka, G.I., Nwabueze, T.U.&Onuh.,J. O. (2017). Physicochemical and pasting properties of high-quality cassava flour and wheat blends. *Agrotechnology*, 6(3), 1–8.
- Joy, J.K., & Siddhuraju, P. (2017). *Studies on Nutritional Profile and Antioxidant Potential of Different Dioscorea Sp With Plectranthus Rotundifolius*. 9(4).
- Khadim, R. M. & Al-Fartusie, F. S. (2021). Antioxidant vitamins and their effect on immune system. *Journal of Physics*: 1853(1), 1–13.
- Lin, X. ., Zhang, X. ., Du, B. & Xu, B. (2023). Properties of Starches Isolated from Different Varieties of Rice : A Systematic Comparative Study. *Foods*, 12, 4492.
- Ngozi, J., James, E., & Helen, O. (2021). *Functional and Pasting Properties of Composite Flour from Wheat , Sweet Potato and Soybean*. 12.
- Obidiegwu, J.E., Lyons, J.B., &Chilaka, C.A.(2020). The *Dioscorea* genus (Yam) – An appraisal of nutritional and therapeutic potentials. *Foods*, 9,1304.
- Ohizua, E. R., Adeola, A. A., Idowu, M. A., Sobukola, O. P., Afolabi, T. A., Ishola, R. O., Ayansina, S. O., Oyekale, T. O. & Falomo, A. (2017). Nutrient composition, functional, and pasting properties of unripe cooking banana, pigeon pea, and sweetpotato flour blends. *Food Science and Nutrition*, 5(3), 750–762.
- Ojo, A., Odedeji, J.O., Oladapo, S.A.&Olosunde, O.O. (2017). Comparative Studies on the Chemical Compositions of Cereal (Wheat and Corn) and Tubers (Water Yam and Bitter Yam) Flours. *International Journal of Innovative Science, Engineering & Technology*.;4(7), 369–385.
- Oke, M.O. & Bolarinwa, I.F.(2012).Effect of Fermentation on Physicochemical Properties and Oxalate Content of Cocoyam (*Colocasia esculenta*) Flour.*ISRN Agronomy*,1–4.

- Okoye, J.I., Nwodo, J.I. & Eze, S. I. (2024). Evaluation of Nutritional Quality and Organoleptic Properties of Soy-poundo Yam Flour. *Archives of Current Research Inter*, **24**(4), 71–82.
- Olaitan, N.I., Eke, M.O. & Agudu, S.S. (2017). Effect of watermelon (*Citrullus lantus*) rind flour supplementation on the quality of wheat based cookies. *International Journal of Engineering and Science*, **6**(12), 38–44.
- Olumurewa, J., Ibadapo, P. & Adebileje, J. (2019). Evaluation of functional and pasting properties of instant pounded yam/plantain flour. *Adv Obes Weight Manag Control*, **9**(1) 1–6.
- Oluseye, O.A., Latee, F.O. & Abdul-Rasaq, A.A. (2018). Proximate, Functional and Pasting Properties of Wheat/Yam flour as a Function of Percentage Level of Yam (*D. Alata* & *D. Cayenensis*) Flour Substitution. *Annals. Food Science and Technology*, **19**(3), 414–422.
- Oluwamukomi, M. O. & Jolayemi, O. S. (2012). Physico-thermal and pasting properties of soy-melon-enriched “gari” semolina from cassava. *Agricultural Engineering International: CIGR Journal*, **14**(3), 105–116.
- Oluwole, O.B., Olapade, A.A., Awonorin, S.O., & Henshaw, F.O. (2013). *Physicochemical properties of extrudates from white yam and bambara nut blends*. 69–74.
- Omohimi, C.I., Piccirillo, C., Roriz, M., Ferraro, V., Vasconcelos, M. W., Sanni, L. O., Tomlins, K., Pintado, M. M. & Abayomi, L. A. (2018). Study of the proximate and mineral composition of different Nigerian yam chips, flakes and flours. *Journal of Food Science and Technology*, **55**(1), 42–51.
- Onyeneke, E.B. (2019). Functional and pasting properties of products of white and yellow cassava. *Journal of Agriculture and Food Sciences*, **17**(1), 1.
- Oyeyinka, S.A., Oyeyinka, A.T., Kayode, R.M. & Folake, O. (2017). *A review on the functionality and potential applications of bitter yam starch*. **18**(3), 364–375.
- Seth, I., Lim, B., Cevik, J., Gracias, D., Chua, M., Kenney, P.S., Rozen, W.M. & Cuomo, R. (2024). Impact of nutrition on skin wound healing and aesthetic outcomes: A comprehensive narrative review. *JPRAS Open*, **39**, 291–302.
- Shambe, T. (2017). Postharvest losses of yam tubers in Benue state, Nigeria, West Africa. *Medical Microbiology & Diagnosis*, 1.
- Ufot, E.I., Comfort, F.E. & Anne, P.E. (2018). Physical Properties, Nutritional Composition and Sensory Evaluation of Cookies Prepared from Rice, Unripe Banana and Sprouted Soybean Flour Blends. *International Journal of Food Science and Biotechnology*, **3**(2).
- Unaeze, H., Nonye, H. & Okoye, C.R. (2022). Evaluation of Pasting and Functional Properties of Flour Blends Made from African Yam Bean (*Sphenostylis stenocarpa*) and Corn (*Zea mays*) Seeds. *International Journal of Innovative Science and Research Technology*, **7**(3), 215–221.
- Verter, N., & Becvarova, V. (2015). An analysis of Yam production in Nigeria. *Acta Universitatis Agriculturae et Silviculturae Mendelianae Brunensis*, **63**(76), 2.
- Wahab, B.A., Adebowale, A.R., Sanni, S.A., Sobukola, O.P., Obadina, A.O., Kajihausa, O. E., Adegunwa, M.O., Sanni, L.O. & Tomlins, K. (2016). Effect of species, pretreatments, and drying methods on the functional and pasting properties of high-quality yam flour. *Food Science and Nutrition*, **4**(1), 50–58.

Wani, I.A. & Qadir, N.(2023). Functional properties, antioxidant activity and in-vitro digestibility characteristics of brown and polished rice flours of Indian temperate region. *Grain&Oil Science and Technology*, 6,43–57.

UNDER PEER REVIEW