

Case report

CASE REPORT ON PRESENTATION OF SCRUB TYPHUS WITH ACUTE RESPIRATORY DISTRESS SYNDROME

ABSTRACT:

The present study reports a case of scrub typhus with acute respiratory distress syndrome. In India, scrub typhus has been endemic for many years. Scrub typhus is an acute febrile illness caused by the *Orientia tsutsugamushi*. The primary pathological change observed here is focal or disseminated vasculitis caused by endothelial cell destruction and perivascular leukocyte infiltration. We report a case of a 23-year-old female with no comorbidities who was referred from an outside hospital with complaints of high-grade fever, which was remittent in nature. Accompanied with symptoms such as abdominal pain which aggravated on food intake, cough without expectoration, nausea, vomiting, headache, generalized myalgia and loose stools. This case of scrub typhus was chosen due to the wide variation in the clinical manifestations seen. It is important to determine the predictors that identify markers of severe disease in order to arrive at an early diagnosis, reduce the mortality, complications and the delay in the overall treatment.

Keywords: scrub typhus, clinical manifestations, abdominal pain, febrile illness

INTRODUCTION: -

Fever is a typical symptom of any infectious systemic illness and can contribute significantly to morbidity. Depending on the duration of the fever, febrile illness can be defined as acute febrile illness (AFI). AFI is defined as any illness characterized by fever lasting two weeks or less, rapid onset, and caused by a variety of pathogens with no indication of organ or

system-specific etiology.^[1] Acute febrile illness epidemics have caused considerable concern in India. Dengue, malaria, typhoid fever, and scrub typhus have all been documented during such outbreaks. In India, Scrub typhus has been endemic for many years. Scrub typhus is an acute febrile illness caused by the *Orientia tsutsugamushi*. The primary pathological change observed here is focal or disseminated vasculitis caused by endothelial cell destruction and perivascular leukocyte infiltration. Scrub typhus is diagnosed based on the patient's exposure history, clinical symptoms, and serologic test results.^[2] The disease is endemic throughout India and has been documented in various states, including Haryana, Jammu & Kashmir, Himachal Pradesh, Uttaranchal, West Bengal, Assam, Maharashtra, Kerala, and Tamil Nadu.^[3]

CASE REPORT: -

A 23-year-old female with nil comorbidities was referred from an outside hospital with complaints of high-grade fever, which was remittent in nature. Accompanied with symptoms such as abdominal pain which aggravated on food intake, cough without expectoration, nausea, vomiting, headache generalized myalgia and loose stools. There was no history of any rash, bleeding manifestations, hematochezia, joint pain or swelling, abdominal distension, loss of weight and appetite. She had no recent history of travel or outside food intake or a known case of TB or Bronchial asthma. A general examination indicated a febrile patient with a temperature of 101.1°F. The patient was conscious, oriented, and her higher cognitive functions were normal. All other vitals were stable. Systemic examination revealed mild tenderness localized all quadrants of the abdomen.

The hemogram revealed anemia as her hemoglobin levels were only 9.6mg/dl .A peripheral blood smear confirmed anemia and demonstrated relative lymphocytosis. Her platelet count was normal. The serum bilirubin level was normal. The liver transaminases were exceeding the normal limits, with SGOT 168 IU/L and SGPT 252 IU/L. Her renal parameters were found to be normal.

During the course in hospital, Patient developed complaints of breathing difficulty. The RS examination showed B/L Basal crepitations. Also, her complaints of loose stools had increased. Her Chest X-Ray revealed a B/L Basal homogenous opacity (As seen as Figure 1). Additionally, a CT Chest and an ultrasound was taken to evaluate further. The Ultrasound revealed minimal B/L Pleural effusion and mild splenomegaly. CT Chest revealed a B/L consolidation with minimal effusion in the base of the lungs (As seen as Figure 2). Owing to her complaints, a CT Abdomen, 2D-Echo, and peripheral smear were sent. Her CT Abdomen revealed mild splenomegaly and ascites which correlated with her elevated liver parameters. (As seen as Figure 3 and Graph 1). Her 2D Echo showed no abnormality other than trace pericardial effusion. The blood and sputum samples were sent for culture, which revealed no growth of any bacteria.. Furthermore her, urine culture revealed to have a growth of *Pseudomonas aeruginosa*. The necessary antibiotics were initiated. As a case of acute febrile illness, she was worked up for other tropical diseases, such as leptospirosis & dengue but reports proved otherwise.

Finally, the patient was diagnosed as a case of scrub typhus on clinical and serological grounds (IGM ELISA) (As seen as Table 1). Patient was already getting treated prophylactically with doxycycline 100 mg twice daily and additional supportive treatment for ARDS and pleural effusion. Her treatment involved assisted O2 support, IV Antibiotics, analgesics, antiemetics, PPIs, antacids, nebulization, probiotics, antihistamines, bronchodilators, cholagogues, vitamins and other supportive measures. She responded well to the treatment with subsidence of both the fever and other symptoms.

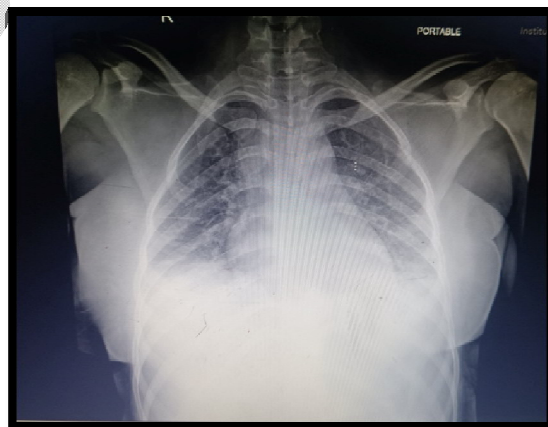


Figure 1: Chest X-Ray – B/L Basal homogenous opacities

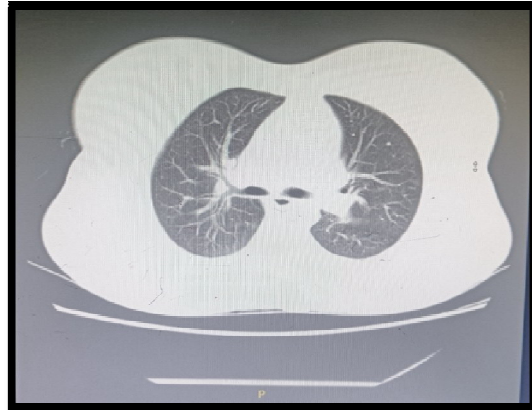
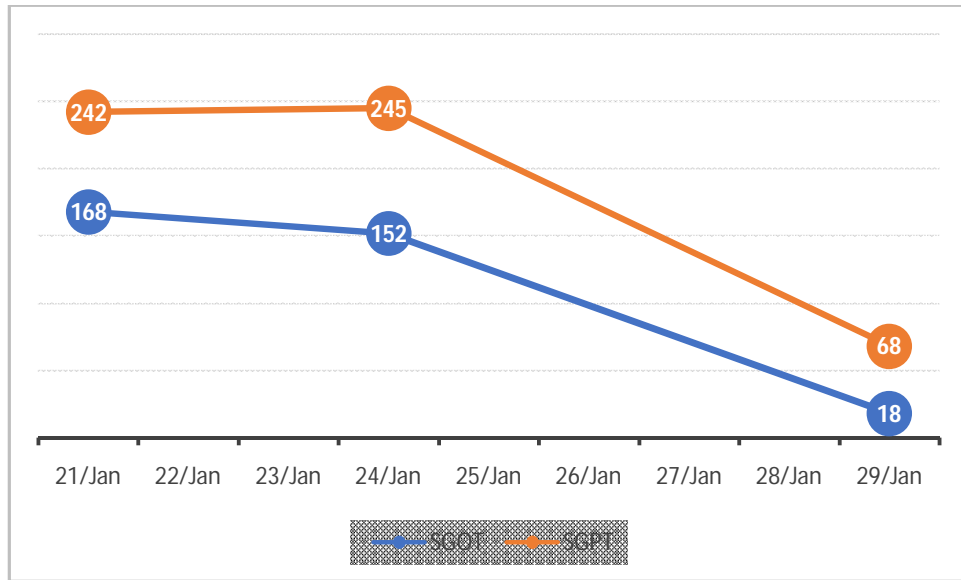


Figure 2: CT Chest – B/L Consolidation with minimal effusion in base of lower lobe



Figure 3: CT Abdomen – Mild splenomegaly and ascites

UNDER REVIEW



Graph 1: Liver function tests – Elevated SGOT & SGPT levels

(Normal ranges: SGOT <45 & SGPT < 42)

TEST	METHOD	RESULT
SCRUB TYPHUS IgM	ELISA	POSITIVE

Table 1: IgM ELISA– Positive for Scrub Typhus

DISCUSSION: -

Scrub typhus is a mite-borne infection that is endemic throughout Southeast Asia. Clinical symptoms include fever, chills, skin rash, eschar at the bite site, and other indicators of acute febrile illness. ^[4] Scrub typhus, caused by the arthropod-borne gram-negative obligately intracellular bacillus *Orientia tsutsugamushi* and transmitted by *Leptotrombidium* mites, is a potentially fatal tropical infection, with approximately a million cases recorded each year. Scrub typhus has resurfaced in India in recent years, and it is now a leading cause of acute undifferentiated febrile infections (AUI) with substantial morbidity and mortality. ^[5]

The clinical picture is characterized by sudden onset of fever with chills, headache, shortness of breath, cough, nausea, backache, and myalgia, profuse perspiration, vomiting, and enlarged lymph nodes. ^[6] Common laboratory findings are elevated liver transaminases, thrombocytopenia, and leukocytosis. ^[7] If not recognized and treated promptly, the infection can progress from a self-limiting disease to a fatal illness in about 35-50% of cases, resulting in multiorgan failure. Life-threatening complications such as acute respiratory distress syndrome (ARDS), hepatitis, renal failure, meningoencephalitis, and myocarditis with shock can occur in various proportions of patients. ^[6] Because of the vast range of clinical symptoms, scrub typhus is frequently overlooked or misdiagnosed. ^[8]

An eschar at the location of chigger feeding site is a trademark clinical sign of scrub typhus. It starts as a papule near the chigger's feeding location, then ulcerates and creates a black crust. When it appears, it emerges before fever and other symptoms manifest. Eschar is seen in 1% to 97% of scrub typhus patients, depending on geographic area and study. ^[9] However, our patient did not present with the classical features of scrub typhus. She had no previous history of rashes or unknown insect bites. But clinically looking into the other clinical features and investigations, her symptoms and presentations were suggestive of scrub typhus.

The laboratory-based diagnosis of scrub typhus is based on serological tests such as the Weil-Felix test, indirect immunofluorescence assays, PCR, enzyme-linked immunosorbent assay (ELISA), and immunochromatographic testing (ICT), among others. The IgM ELISA-based

approach for diagnosing scrub typhus is the most reliable of all serological assays. Our patient was diagnosed by this test, it has approximately a 91% sensitivity and 99% specificity rate. ^[10,11]

Our case was associated with mainly associated with ARDS .The bacteria causes widespread vasculitic and perivascular inflammatory lesions, which lead to severe vascular leakage and end-organ damage.^[3] Acute respiratory distress syndrome (ARDS) is an uncommon but fatal consequence of scrub typhus. It is critical to understand how ARDS can arise in scrub typhus and the potential risk factors, because the illness is curable if detected and identified early.^[12]

This case of scrub typhus was chosen due to the wide variation in the clinical manifestations seen. It is important to determine the predictors that identify markers of severe disease in order to arrive at an early diagnosis, reduce the mortality, complications and the delay in the overall treatment.

REFERENCES:-

1. Shelke YP, Deotale VS, Maraskolhe DL. Spectrum of infections in acute febrile illness in central India. Indian Journal of Medical Microbiology. 2017 Oct 1;35(4):480-4.

Available URL: <https://pubmed.ncbi.nlm.nih.gov/29405137/>

2. Jeong YJ, Kim S, Wook YD, Lee JW, Kim KI, Lee SH. Scrub typhus: clinical, pathologic, and imaging findings. Radiographics. 2007 Jan;27(1):161-72.

Available URL: <https://pubmed.ncbi.nlm.nih.gov/17235005/>

3. Rapsang AG, Bhattacharyya P. Scrub typhus. Indian journal of anaesthesia. 2013 Mar 1;57(2):127-34.

Available URL: <https://pubmed.ncbi.nlm.nih.gov/23825810/>

4. Liu X, Zhang Y, Zhang J, Lou Z, Xia H, Lu Z. The early diagnosis of scrub typhus by metagenomic next-generation sequencing. *Frontiers in Public Health*. 2021 Nov 11;9:755228.

Available URL: <https://www.ncbi.nlm.nih.gov/pmc/articles/PMC8632043/>

5. Devasagayam E, Dayanand D, Kundu D, Kamath MS, Kirubakaran R, Varghese GM. The burden of scrub typhus in India: A systematic review. *PLoS neglected tropical diseases*. 2021 Jul 27;15(7):e0009619.

Available URL: <https://www.ncbi.nlm.nih.gov/pmc/articles/PMC8345853/>

6. Varghese GM, Trowbridge P, Janardhanan J, Thomas K, Peter JV, Mathews P, Abraham OC, Kavitha ML. Clinical profile and improving mortality trend of scrub typhus in South India. *International Journal of Infectious Diseases*. 2014 Jun 1;23:39-43.

Available URL: <https://pubmed.ncbi.nlm.nih.gov/24661931/>

7. Peter JV, Sudarsan TI, Prakash JA, Varghese GM. Severe scrub typhus infection: clinical features, diagnostic challenges and management. *World journal of critical care medicine*. 2015 Aug 8;4(3):244.

Available URL: <https://pubmed.ncbi.nlm.nih.gov/26261776/>

8. Rajapakse S, Rodrigo C, Fernando D. Scrub typhus: pathophysiology, clinical manifestations and prognosis. *Asian Pacific journal of tropical medicine*. 2012 Apr 1;5(4):261-4.

Available URL: <https://pubmed.ncbi.nlm.nih.gov/22449515/>

9. Xu G, Walker DH, Jupiter D, Melby PC, Arcari CM. A review of the global epidemiology of scrub typhus. *PLoS neglected tropical diseases*. 2017 Nov 3;11(11):e0006062.

Available URL: <https://www.ncbi.nlm.nih.gov/pmc/articles/PMC5687757/>

10. Kispotta R, Kasinathan A, Kumar Kommu PP, Mani M. Analysis of 262 Children with Scrub Typhus Infection: A Single-Center Experience. *The American Journal of Tropical Medicine and Hygiene*. 2021;104(2):622-627. doi:10.4269/ajtmh.20-1019

Available URL: <https://www.ncbi.nlm.nih.gov/pmc/articles/PMC7866334/>

11. Kala D, Gupta S, Nagraik R, Verma V, Thakur A, Kaushal A. Diagnosis of scrub typhus: recent advancements and challenges. *3 Biotech*. 2020 Sep;10(9):396.

Available URL: <https://www.ncbi.nlm.nih.gov/pmc/articles/PMC7431554/>

12. Sahoo JN, Gurjar M, Harde Y. Acute respiratory failure in scrub typhus patients. *Indian Journal of Critical Care Medicine: Peer-reviewed, Official Publication of Indian Society of Critical Care Medicine*. 2016 Aug;20(8):480.

Available URL: <https://www.ncbi.nlm.nih.gov/pmc/articles/PMC5225780/>

UNDER PEER REVIEW