

Evaluation of Different Botanicals Against *Sclerotium rolfsii* Causing Collar Rot Disease of Lentil

ABSTRACT

Lentil (*Lens culinaris* Medik.) is an important pulse crop in semiarid regions of Iran, India, Turkey and Canada and originated in the fertile crescent of the Near East and dates back to the beginning of agriculture itself. Lentil suffer from attack of number seed borne diseases such as vascular wilt, collar rot, root rot, stem rot, rust, powdery mildew and downy mildew, which are caused by *Fusarium oxysporum* f.sp. *lentis*, *Sclerotium rolfsii*, *Rhizoctonia solani*, *Uromyces fabae*, *Erysiphe polygoni* and *Peronospora lentis*, respectively. Among the diseases, foot and root rot of lentil caused by *Sclerotium rolfsii* are common and the most severe disease. The fungi can attack the crop at any stage from seedling to flowering stage and are comparatively more destructive at the seedling stage. The effect of phyto extracts of nine plant species were tested *in vitro* by poisoned food technique to know their inhibitory effect on the growth of *Sclerotium rolfsii*. Significantly minimum mycelium growth was recorded in *Curcuma longa* (39.25 mm) while maximum mycelium growth was observed in *Ricinus communis* (90.00 mm).

Keywords: Lentil; pulse crop; borne diseases; fungal diseases; mustard seed; natural origin; Plant Pathology; *Sclerotium rolfsii*.

1. INTRODUCTION

"Lentil (*Lens culinaris* Medik.) is an important pulse crop. Lentil is utilized for human consumption as an edible protein resources. It is a good source of vitamin A, potassium, fiber, iron and vitamins B" [1].

"Among the fungal diseases, collar rot of lentil caused by *S. rolfsii* are generic and the most solemn disease. *Sclerotium rolfsii* can invade the crop during seedling to flowering stage. The pathogen *S. rolfsii* is more severe in the early stage. The fungus is soil-borne and produces survival structure sclerotia, which can survive very long time in the soil. *S. rolfsii* affects the lower stem and roots of lentil at or near the soil line. During infection whitish mycelia growth of the fungus can be seen at the junction of the branch with the stem close to the soil level, which is the most favorable point of attack. In

advanced stage of disease, a white mycelial web dispersion over the soil and the basal plant part of the plant and sclerotia of mustard seed size are observed on the diseased area. In its advanced stage infection becomes prominent in the root system and subsequently the entire shoot withers and falls and the plant eventually die" [2].

"The use of plant extracts has been shown to be ecofriendly and effective against many plant pathogens" [3,4]. Botanicals are naturally occurring, environmentally benign and biodegradable. The current investigation was conducted with consideration for host target specificity, cost effectiveness, and nature safety. Based on the aforementioned information, Madhya Pradesh needs this kind of research. In order to evaluate the antifungal activity of additional plant extracts against the *in vitro* growth of *S. rolfsii*, the current investigation was

conducted.

2. MATERIALS AND METHODS

The experiment was carried out at Department of Plant Pathology, College of Agriculture, Gwalior. The effect of botanicals of various plant species as listed in Table-1 were tested *in vitro* by poisoned food technique to know their inhibitory effect on the growth of *S. rolfii*. The experiment was laid out in complete randomized design and replicated four times. Healthy fresh plant leaves were taken, washed thoroughly with fresh water and finally raised with sterilized water and air dried on blotter paper. Fifty gram of fresh plant parts were cut into small pieces and minced with help of grinder and 50 ml distilled water was added. The botanical extracts were filtered through double layered muslin cloth in 150 ml conical flasks and plugged with non absorbent cotton. The filtered extracts were autoclaved at 15 lb per square inch pressure for 20 minutes. Autoclaved extracts were

individually added into molten sterilized potato dextrose agar @ 20 per cent mixed thoroughly at time of pouring in the previously sterilized Petri dishes. The Petri dishes were incubated aseptically after solidification by placing 5 mm diameter mycelia disc at the centre. Ten days old pure culture of *Sclerotium rolfii* was used. The plate without phytoextract served as control. The Petri dishes were incubated at 25±2°C. The observation was recorded at 120 and 168 hrs of inoculation. The per cent growth inhibition of the pathogen was worked out by using formula given by Vincent[5].

$$\text{PGI} = \frac{\text{C-T}}{\text{C}} \times 100$$

Where,

PGI = Per cent growth inhibition

C = Growth in control

T = Growth in botanicals

Table1.List of botanicals

Serial Number	Botanicals	Plant part Used	%/100ml	Common name	Family	Constituents
1.	<i>Curcuma longa</i>	Powder	20%	Haldi	Zingiberaceae	Curcumenol, curdione, curcumin, isocurcumenol, curcumol, stigmasterol, zingiberene and curcumene
2.	<i>Michelia champaca</i>	Leaf	20%	Champaca	Magnoliaceae	Phenyl acetonitril, phenyl ethyl alcohol, alpha + beta ionone, methyl, methyl anthranilate, indole and methyl linoleate.
3.	<i>Ricinus communis</i>	Leaf	20%	Castor	Euphorbiaceae	Alkaloid, ricinoleic acid, stearic, linoleic, palmitic acid, sitosterol, squalenotocopherols and stearic acid
4.	<i>Nerium Oleander</i>	Leaf	20%	Kaner	Apocynaceae	Oleandrin, digitoxigenin and gitoxigenin
5.	<i>Ficus religiosa</i>	Leaf	20%	Pipal	Moraceae	Phenols, tannins, steroids, alkaloid and flavonoids, beta-sitosteryl-D-glucoside, vitamin K, n- octacosanol, methyl oleanolate, lanosterol, stigma sterol.
6.	<i>Pisidium guajava</i>	Leaf	20 %	Guava	Myrtaceae	Guajanin acid, beta- sitosterol, uvaol, oleanolic acid and ursolic acid.
7.	<i>Duranta erecta</i>	Leaf	20 %	Sky flower	Verbenaceae	Coumarinolignoids, (E)- cinnamic acid, (E)- p-methoxycinnamic acid, and lamiide, β- sitosterol, naringenin, acteoside, lamiide, sucrose, and raffinose
8.	<i>Saraca asoca</i>	Leaf	20 %	Ashok	Fabaceae	Quercetin, quercetin-3-O-α-Lrhamnoside, kaempferol 3-O- αL rhamnoside, amyirin, ceryl alcohol and β sitosterol
9.	<i>Tridax Procumbens</i>	Leaf	20 %	Tridax	Asteraceae	Alkyl esters, sterols, pentacyclic triterpenes, fatty acid and polysaccharides

3. RESULTS

3.1 Effect of Plant Extracts on Mycelial Growth of *Sclerotium rolfsii*

Fungicidal ability of nine botanicals viz., *Curcuma longa* powder, *Michelia champaca* (champa), *Ricinus communis* (castor), *Nerium oleander* (kaner), *Ficus religiosa* (pipal), *Tridax procumbens*, *Psidium guajava*, *Duranta erecta* (hedge) and *Saraca asoca* (Ashoka) were tested against the growth of *S. rolfsii* at 20% concentration and was recorded at 3, 5 and 7 days after inoculation.

Significantly lowest mycelium growth (7.75mm) was recorded in case of *C. longa*, where inhibition was 74.17% at three days after inoculation. The next best botanical found was *N. oleander* with mean mycelium growth of 11.25 mm followed by *M. champaca* (19.00 mm), *S. asoca* (20.25 mm), *P. guajava* (21.50 mm) and *D. erecta* (24.00 mm). Mycelial growth was highest in case of untreated control (30.00mm); there was no inhibition of mycelia growth. Among the ten phytoextracts tested, *C. longa* extract gave higher level of inhibition of mycelial growth (70.52 %) at 20% concentration and recorded minimum mycelial growth (18.50 mm) which was statistically similar to *N. oleander* (21.50 mm) at five days after inoculation. The next best botanical found was *S. asoca* (41.50 mm) followed by *P. guajava* (46.00 mm), *D. erecta* (48.50 mm) and *M. champaca* (52.00 mm). Maximum mycelial growth (62.75 mm) was recorded in untreated control which was found at par with *R. communis* (60.75 mm) and *F. religiosa* (60.25 mm). Average radial mycelial growth of *S. rolfsii* in all the botanicals was varied from 30.00 mm to 90.00 mm at seven days after inoculation. However, significantly lowest mycelia growth was recorded in *C. longa* (39.25 mm). This was followed by *N. oleander* (43.75 mm), *S. asoca* (61.50 mm) and *P. guajava* (78.50 mm). Whereas, the botanicals named *R. communis* (90.00 mm) was found statistically similar with untreated control and recorded maximum mycelial growth followed by *F. religiosa* (86.00 mm), *D. erecta* (80.75 mm), *M. champaca* (80.50 mm) and *T. procumbens* (79.25 mm) (Fig. 1).

4. DISCUSSION

"The application of chemical fungicides, plant diseases can be managed but the hazardous impacts of such products in human health and environment are well known. Natural plant

products have been found effective in plant disease managements and could be safely incorporated as suitable alternatives for chemical fungicides by Zaker [6]. Active principles from medicinal plants are being tried as replacements of synthetic fungicides in management of plant diseases inorganic farming system. Continuous use of fungicides and chemicals causes pollution in environment and there is a requirement to minimize the amount of fungicides application to the plants. Thus, plant extracts and bio agents can be used for management of disease as an alternative source. Plants extracts are eco-friendly, protective, curative and antagonistic to many diseases"[7].

Fungicidal ability of nine botanicals was tested against the growth of *S.rolfsii* at 20% concentration. Significantly least mycelial growth was recorded with *C. longa* followed by *N. oleander*, *S. asoca* and *P. guajava*. Whereas, the botanicals named *R. communis* was found statistically similar with untreated control and recorded maximum mycelia growth. Similar experiment conducted by Bharathi and Benagi, [8] and reported that minimum mycelial growth was noticed in the combination of garlic bulb extract, rhizome extract of turmeric and black tulsii leaf extract (1:1:1). Srawani and Chandra [9] evaluated botanical against *S. rolfsii* by using food poison technique. Lemon grass leaf (*Cymbopogon citrates*) showed greater effect in reducing the pathogen growth followed by *Datura* leaf (*D. stramonium*) and *Calotropis* leaf (*C.procera*). Farooq *et al.* [10] reported that maximum inhibition of *S. rolfsii* was recorded by *Azadirachta indica* (73.8%). Singh *et al.* [11] reported that foliar extract of neem followed by that of ashoka, caused maximum inhibition of mycelial growth, sclerotial production and viability of *S. rolfsii* causing collar rot of lentil.

Madhavi *et al.* [12] conducted experiment for *in vitro* evaluated eight different plant extracts against *S. rolfsii*. Neem leaf extract caused maximum inhibition of mycelial growth (80.74%). Sclerotial production was inhibited to an extent of 11% and the inhibition caused was maximum with neem extract, followed by *Polyalthia longifolia* [Ashoka]. Hanthe gowda and Adiver [13] tested different plant extract against *S. rolfsii*. Among different plant extracts 1:20 dilution of *Parthenium hysterophorus*, Ashoka and *A. indica* significantly inhibited the mycelia growth of *S. rolfsii*.

Harish *et al.*[14] conducted experiment for *in vitro* evaluated fifty plant extracts against *Bipolaris oryzae* (*Cochliobolus miyabeanus*), the

causal agent of brown spot disease of rice and indicated that two leaf extracts, *Nerium oleander* and *Pithecolobium dulce* exerted the higher percent inhibition to mycelial growth and spore germination of *B. oryzae*. Gupta *et al.*, [15]

medicinal plant extracts against collar rot of tomato *in vitro* and *in vivo* against *S. rolfsii*, causing collar rot of chickpea and found hundred % mycelia inhibition recorded in garlic followed by neem, ginger, marigold and lantana.

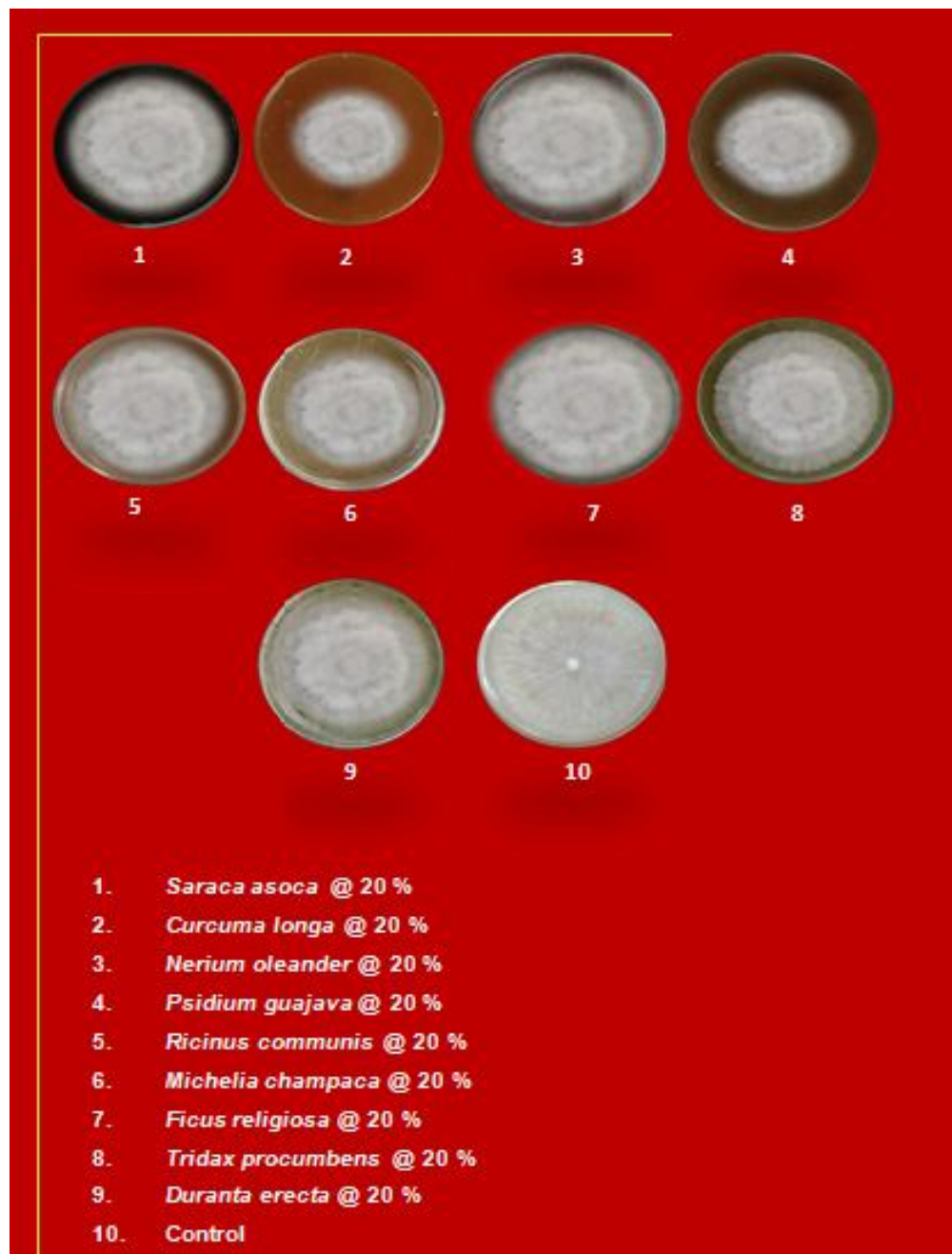


Fig.1. *In-vitro* evaluation of botanicals against *Sclerotium rolfsii*

Table 2. *In-vitro* evaluation of botanicals against *Sclerotium rolfsii*

Botanicals	3DAI		5DAI		7DAI	
	Mycelium growth(mm)	% inhibition	Mycelium growth(mm)	% inhibition	Mycelium growth (mm)	% inhibition
<i>Michelia champaca</i>	19.00	36.67	52.00	17.13	80.50	10.56
<i>Curcuma longa</i>	7.75	74.17	18.50	70.52	39.25	56.39
<i>Ficus religiosa</i>	26.50	11.67	60.25	3.98	86.00	4.44
<i>Nerium oleander</i>	11.25	62.50	21.50	65.74	43.75	51.39
<i>Tridax procumbens</i>	26.50	11.67	53.00	15.54	79.25	11.94
<i>Saraca asoca</i>	20.25	32.50	41.50	33.86	61.50	31.67
<i>Ricinus communis</i>	27.50	8.33	60.75	3.19	90.00	0.00
<i>Duranta erecta</i>	24.00	20.00	48.50	22.71	80.75	10.28
<i>Pisidium guajava</i>	21.50	28.33	46.00	26.69	78.50	12.78
Control	30.00	0.00	62.75	0.00	90.00	0.00
SEm±	0.63	-	1.07	-	0.80	-
C.D. at 5 %	1.83	-	3.08	-	2.30	-

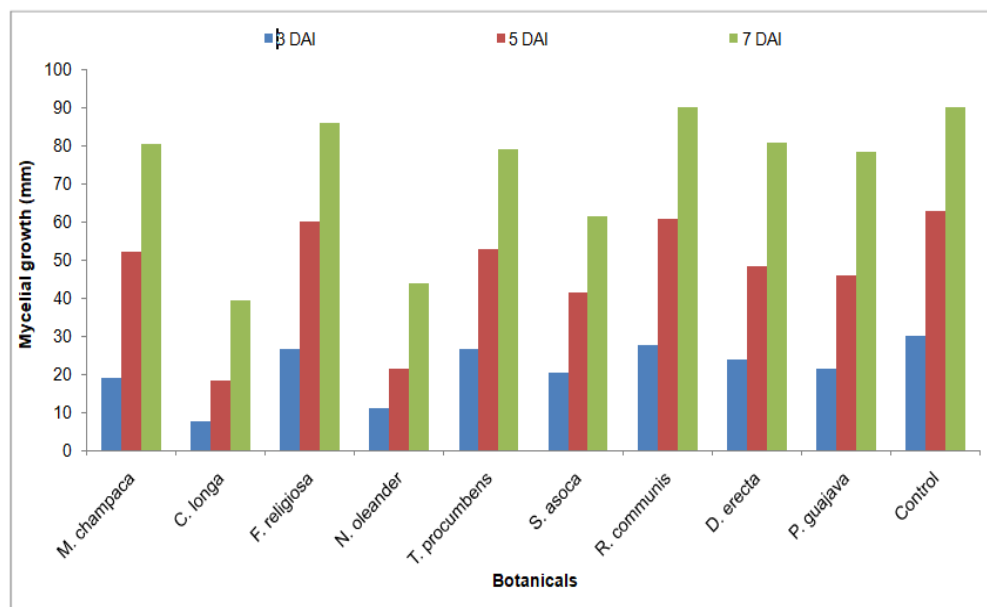


Fig.2. *In-vitro* evaluation of botanicals against *Sclerotium rolfsii*

5. CONCLUSION

Collar rot disease caused by *Sclerotium rolfsii*, is a serious threat to lentil. Its control has acquired very limited success. Present investigation was carried out with management option by plant extract to minimize the mycelia growth of pathogen. A laboratory experiment was carried out for evaluation of different botanicals viz. *Curcuma longa* powder, *Michelia champaca* (champa), *Ricinus communis* (castor), *Nerium oleander* (kaner), *Ficus religiosa* (pipal), *Tridax procumbens*, *Psidium guajava*, *Duranta erecta* (hedge) and *Saraca asoca* (Ashoka) against *S. rolfsii*. Fungicidal ability of nine botanicals were tested against the growth of *S. rolfsii* at 20% concentration. Significantly least mycelial growth was recorded with *C. longa* followed by *N. oleander*, *S. asoca* and *P. guajava*. Whereas, the botanicals named *R. communis* was found statistically similar with untreated control and recorded maximum mycelial growth followed by *F. religiosa*, *D. erecta*, *M. champaca* and *T. procumbens*.

ACKNOWLEDGMENT

I would like to acknowledge to the Head of the department of Plant Pathology, College of Agriculture, Gwalior M.P. for providing me necessary facilities and encouragement for conducting the research work.

COMPETING INTERESTS

Authors have declared that no competing interests exist.

REFERANCES

1. Kochhar SL. Economic Botany in the Tropics. MacMillan India Ltd., Daryaganj, New Delhi. 200;9:658.
2. Dey TK, Ali MS, Chowdhury N. Vegetative growth and sporangia production in *Phytophthora colocaseae*. Indian J. Root crops. 1993;17(2):142-146.
3. Thobhunluepop P. Implementation of biofungicides and seed treatment in organic rice cv. KDML 105 farming. Pakistan J. Biol. Sci. 2009;12:1119-1126.
4. Duru CM, Onyedineke NE. In vitro study on the antimicrobial activity and phytochemical analysis of ethonolic extracts of the mesocarp of *Voacanga africana*. An. J. plant Physiol.2010;5:163-169.
5. Vincent JM.. Distortion of fungal hyphae in presence of certain inhibitors. Nature.1947;154: 850.
6. Zaker M. Natural Plant Products as Eco-friendly Fungicides for Plant Diseases Control- A Review. The Agriculturists. 2016;14(1):134-141. Available:https://doi.org/10.3329/agric.v14i1.29111

7. Kalo F, Taniguchi T. Properties of a virus inhibitor from spinach leaves and mode of action. Ann Phytopath Sec Japan.1987;53:159-167.
8. Bharathi AR, Benagi V I. *In vitro* evaluation of botanicals and bio-agents against *Sclerotium rolfsii* Sacc. incitant of wilt complex disease of betelvine (*Piper betle L.*). *The Phar. Inno. J.*2018;7(6): 334-336
9. Sravani B, Chandra R. Fungicidal effect of plant extracts on the growth of *Sclerotium rolfsii*, the incitant of collar rot of chickpea . *Int. J.Chemi. Stud.*2020;8(1): 389-392.
10. Farooq MA, Iqba IU, Iqbal Sh M, Afzal R, Rasool A. *In-vitro* evaluation of different plant extracts on mycelial growth of *sclerotium rolfsii* the cause of root rot of sugar beet. *Mycopathology.*2010;8(2): 81-84.
11. Evaluation of different botanicals and non target pesticides against *Sclerotium rolfsii* causing collar rot of lentil. *Ind. Phytopath.*2007;60:499-501.
12. Madhavi GB, Bhattiprolu SL, Reddy VB. Effect of various plant extracts on dry root rot of chillies caused by *Sclerotium rolfsii* *J. Hortl. Sci.* 2011;6(2):156-158.
13. Hanthegowde B, Adiver SS. Effect of plant extracts, bioagents, rotational crops and their root exudates on *Sclerotium rolfsii* causing stem rot of groundnut. *Gujarat Agric. Univ. Res. J.*2001;18(2): 240-243
14. Harish S, Saravanakumar D, Radjacommare R. et al. Use of plant extracts and biocontrol agents for the management of brown spot disease in rice. *Bio Control.* 2008;53:555–567. Available:<https://doi.org/10.1007/s10526-007-9098-9>.
15. Gupta RP, Singh SK, Mishra RS, Gupta S. Efficacy of botanicals against *Sclerotium rolfsii* causing collar rot of chickpea. *Ann. Pl. Protec. Sci.*2012;20(2):486-487.