

Primary Checklist of Phytoplankton Genera in Sunye Lake, Myanmar

2

9
10
11

ABSTRACT

Phytoplankton are the foundation of food webs and the most important producer in aquatic ecosystems. They can photosynthesize and convert light energy into organic energy. They are a secret ingredients used as a bioindicator of water quality and pollution. This study investigated composition of phytoplankton in freshwater body of Sunye lake, Mandalay region. The study was conducted one year from January 2020 to December 2020. According to the study, out of 47 total algal genera; Chlorophyceae (14 genera), Baciliophyceae (11 genera); Cyanophyceae (nine genera); Zygnematophyceae (two genera), Euglenophyceae (one genera) and Conjugatophyceae (one genera) were recorded. In this study, among total genera of 37, the class of Chlorophyceae (45%) is the largest group followed by Baciliophyceae (28%), Cyanophyceae (19%), Zygnematophyceae (4%), Euglenophyceae (2%) and Conjugatophyceae (2%). This present check list study will be useful base line data for further study of phytoplankton in the lake.

Aims: The aim of study is to record and give the information's of phytoplankton existence and useful data for further study and lake ecosystem.

Study design: The water sample was collected monthly early morning once a week throughout the study period.

Place and Duration of Study: This sample were collected from natural freshwater Sunye lake during January 2020 to December 2020 for one year period.

Methodology: Phytoplankton samples were taken by filtering through 25 µm mesh plankton net and preserved with a Lugol's solution and kept in refrigerator for further study. The sample was identified and took photograph by using the microscope (OPTIKA). The result of phytoplankton were checked with phytoplankton identification key, taxonomic database site.

Results: In the present study, 47 genera belong to the six different classes of phytoplankton were recorded: chlorophyceae, baciliophyceae, Cyanophyceae, Zygnematophyceae, Euglenophyceae, Conjugatophyceae.

Conclusion: The current study is first time to study the checklist of phytoplankton in Sunye Lake and should be continuously study to update the checklist data of phytoplankton genera and seasonally abundance which is important indicator of lake ecosystem.

12 *Keywords: Algae, Chlorophyte, Freshwater, Ecosystem*

13 1. INTRODUCTION

14
15
16
17
18

Atiny small microscopic plant, phytoplankton is an important basic species of food web and as a source of nutrient in aquaculture. These organisms have an extreme ecological importance in the different water bodies worldwide, as they fixed carbon dioxide, produce oxygen and are important key element in the basis of various food chains [3]. Phytoplankton

19
20
21
22

are mentioned as pollution indicator species [6] and presence of phytoplankton reflected the status of water quality [2]. Phytoplankton are renewable, sustainable and economical sources of biofuels, bioactive medicinal products and foodingredients [15].
composition of algae formed under the influence of nutrient source, morphometry the

Species

23 chemistry and history of the use of each of the lakes [16]. Many features such as width,
24 discharge, substratum size, light, temperature and depth also affect the species
25 compositions and productivity of lotic environments [6].

26
27 Checklist is important for ecological study, monitoring and conservation of ecosystem and
28 need to be updated, without baseline information it is difficult to study any changes. A
29 regular checklist species occur to quickly determine the presence of new and possibly,
30 invasive species in the freshwater system [20]. Regular checklist species is vital in
31 monitoring existence of native species. Study phytoplankton help understand such as
32 changes in fish stocks, pollution and climate.

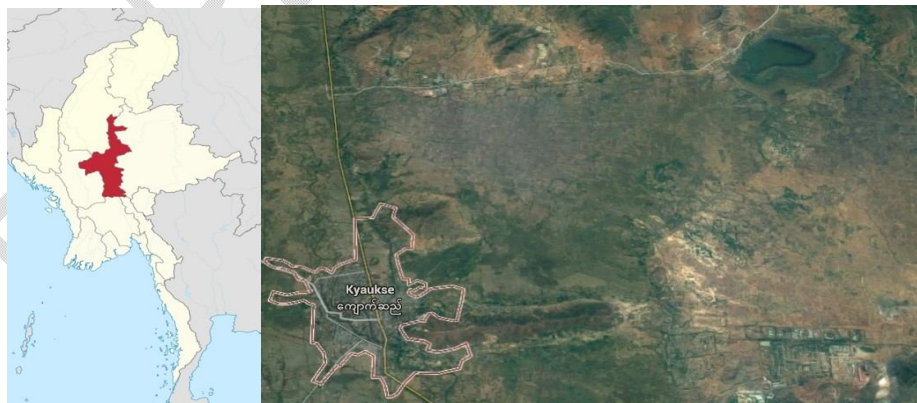
33
34 Sunye Lake, Mandalay Region, it has been formed as a natural freshwater lake in central dry
35 zone (typically 500-1000 mm of rain per year) [21][8] since 11 century AD. This area
36 covered has 537 ha with 150 m above sea level. The maximum depth of the lake is 3.1 m and
37 the average depth is 1.5 m. Many hills and hill locks surround to the lake which form the
38 natural reservoirs. It is providing important water resources for household usage and
39 irrigation. The present study is first time investigation and checklist of basic aquatic
40 phytoplankton genera. The aim of study is to record and give the information of
41 phytoplankton existence and useful data for further study and lake ecosystem.

42 43 **2. MATERIAL AND METHODS**

44 **2.1 Study Area and Procedure**

45
46 This sample were collected during January 2020 to December 2020 for one-year period.
47 Geographically, this lake lies between $21^{\circ}40' - 40^{\circ}8'N$ Longitude and $96^{\circ}11' - 45^{\circ}9'E$
48 Latitude (figure 1). The water sample was collected once a week monthly and early morning
49 at 8:00 Am to 9:00 Am throughout the study period. Phytoplankton samples were taken by
50 filtering through 25 μ m mesh plankton net, 20 liters of water sample was passed through in
51 100 mL polythene bottles which tightly tied with the plankton net. Collected 100 mL
52 phytoplankton sample to be analyzed and it was preserved in a Lugol's solution immediately
53 packing with black plastic bag. The preserved sample was kept in refrigerated condition
54 about 48 hours for further study.

55



56

57

58 **Fig. 1. Location map of the Sunye Lake**

59 **2.2 Phytoplankton Identification**

60

61 The sample was identified and took photograph by using the microscope (OPTIKA). The
62 results of phytoplankton were checked with phytoplankton identification key, taxonomic
63 database site *algaebase.com* and monograph. Easy identification of the most common
64 freshwater algae by [30] was used as a main reference book.

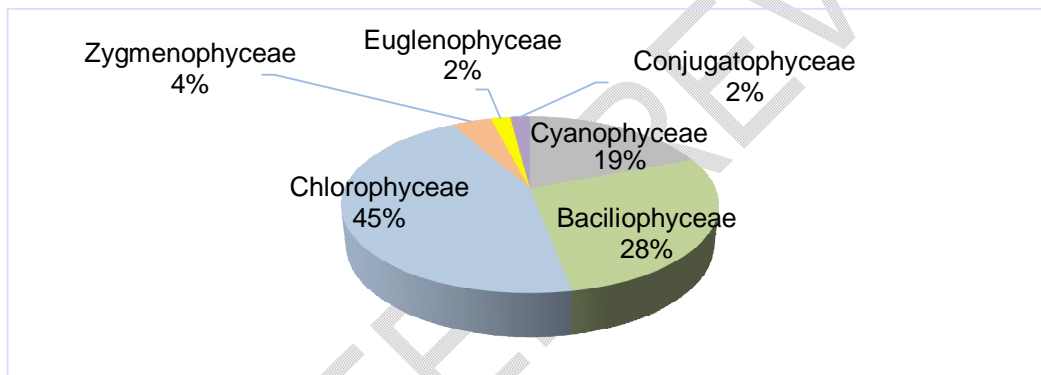
65

66 **3. RESULTS AND DISCUSSION**

67

68 In the present study, 47 genera belong to the six different classes of phytoplankton were
69 recorded in table 1 and species composition is shown in figure 2. Microscopic image of
70 phytoplankton is shown in figure 3, 4 and 5. Thirteen different genera of chlorophyceae
71 class were found, they are *Colostrum* sp., *Quadrigula* sp., eight different *Scenedesmus* sp.,
72 three different *Pedistrum* sp., *Selenastrum* sp., *Chlorella* sp., *Monoripidium* sp.,
73 *Chlorogonium* sp., *Chlorococcum* sp., *Golenkinia* sp., *Dictyosphaeria* sp., *Oocystis* sp.,
74 *Westella* sp.

75



76

77

78 **Fig. 2. Percentage of phytoplankton composition by class in Sunye Lake.**

79

80 Chlorophyceae were the highest species composition with 45%. The Chlorophyceae,
81 freshwater green algae are a large and important group, they include some common species
82 and many members are important both ecologically and scientifically. The
83 Chlorophyceae encompass the widest range of morphologies in the green algae and
84 included nearly all green algae [29][17]. A total of 99 phytoplankton taxa belonging to 50
85 genera were recorded from Yezin Dam, 12 belonged to Chlorophyceae [27]. Four types of
86 phyla, 37 algal species were recorded in Mya Kan Thar Lake, Loilem Township,
87 Chlorophyta, Chlorophyceae group was also highest [24]. Total 18 Chlorophyta algal
88 species were recorded in Naung-yar Lake Loikaw city [23].

89

90 Baciliophyceae were the second highest number of species with 28% in present study.

91 These group is also called diatom. Eleven Baciliophyceae class record are two *Fragilaria*
92 sp., two *Synedr* sp., two *Pinnularia* sp., *Cyclotella* sp., *Craticula* sp., *Navicula* sp.,

93 *Aulacoseria* sp., *Merismopedias* sp., *Phormidium* sp., *Cymbella* sp. and *Nitzschia* sp. Current

94 research finding was similar with report from Indawgyi Lake in which the Chlorophyceae

95 showed the highest number of species, diatom is the second highest [10]. Diatoms are found

96 both in the marine and freshwater column as phytoplankton as well as on the bed as benthic

97 microalgae or microphytobenthos [31]. Diatom are reported as pollution indicator of wetland

98 and reservoir [11]. Applications of Diatom analysis now commonly used in archaeology [7].

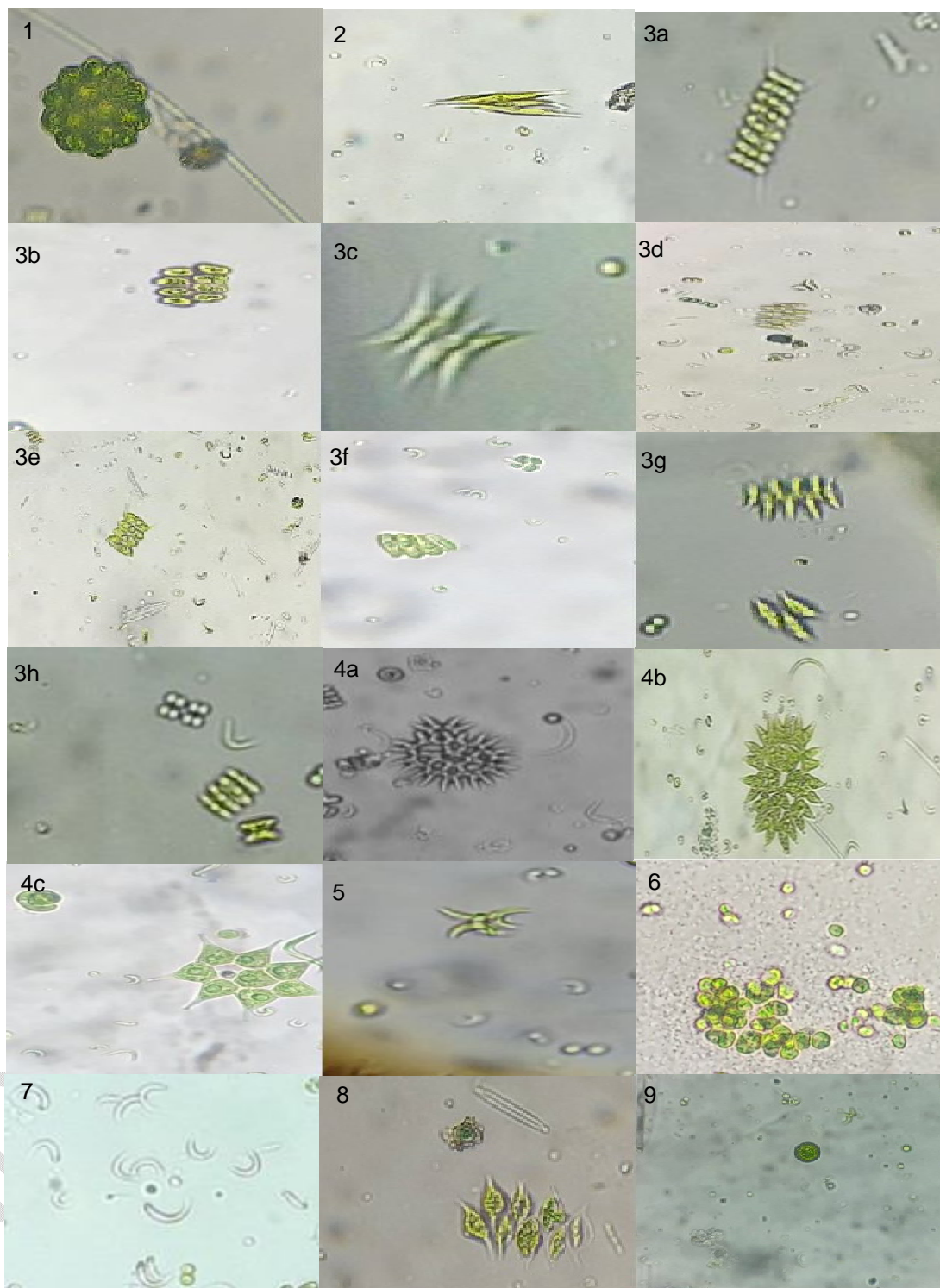
99

100 In this study, nine Cyanophyceae, *Oscillatoria* sp., *Anabaena* sp., *Spirulina* sp., *Microcystis*
 101 sp., two different *Tetraedron* sp., *Gloeocapsa* sp., *Nostoc* sp., *Arthrospira* sp., and
 102 *Chroococcus* sp. were recorded with 19%. Some other freshwater phytoplankton studied have
 103 been reported in Myanmar. A total of 70 algal species were recorded from Indawgyi Lake in
 104

105 **Table 1. List of Phytoplankton in Sunye Lake.**

106

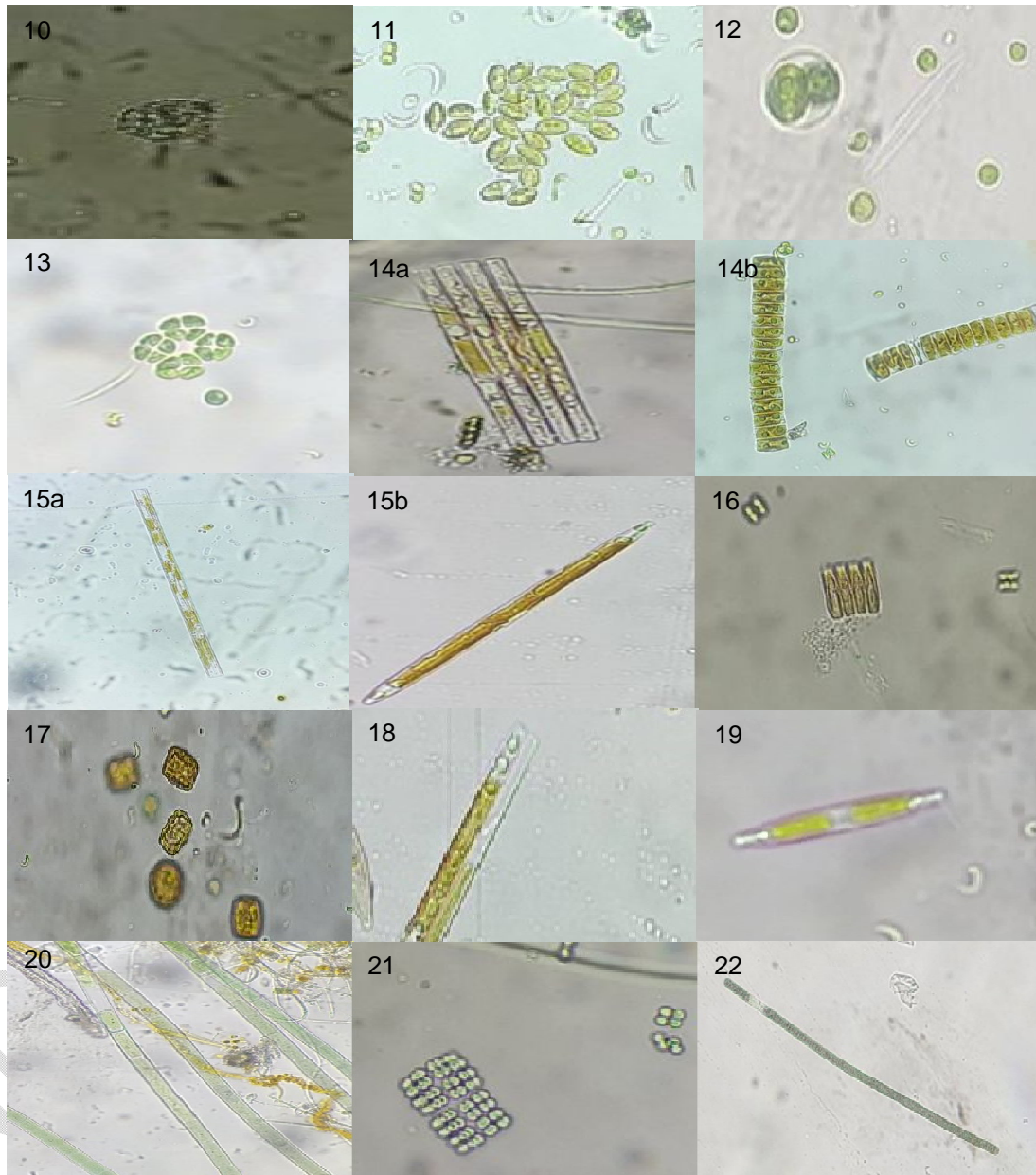
No	Genus	Family	Order	Class
1	Coelastrum	Scendesmaceae	Sphaeropleales	Chlorophyceae
2	Quadrigula	Oocystaceae	Trebouxiophyceae	Chlorophyceae
3	Scendesmus	Scendesmaceae	Sphaeropleales	Chlorophyceae
4	Pedistrum	Hydrodictyceae	Sphaeropleales	Chlorophyceae
5	Selenastrum	Selenastraceae	Sphaeropleales	Chlorophyceae
6	Chlorella	Chlorellaceae	Chlorellales	Chlorophyceae
7	Monoriphidium	Selenastraceae	Sphaeropleales	Chlorophyceae
8	Chlorogonium	Haematococcaceae	Chlamydomonadales	Chlorophyceae
9	Chlorococcum	Chlorococceae	Chlamydomonadales	Chlorophyceae
10	Golenkinia	Neochloridaceae	Sphaerophyceae	Chlorophyceae
11	Dictyosphaerium	Chlorellaceae	Chlorellales	Chlorophyceae
12	Oocystis	Oocystaceae	Chlorellales	Chlorophyceae
13	Westella	Scendesmaceae	Sphaeropleales	Chlorophyceae
14	Fragilaria	Fragilariaceae	Fragilariales	Baciliophyceae
15	Synedra	Fragilariaceae	Fragilariales	Baciliophyceae
16	Pinnularia	Pinnulariaceae	Naviculales	Baciliophyceae
17	Cyclotella	Stephanodiscaceae	Thalassiosirales	Baciliophyceae
18	Craticula	Stauroneidaceae	Naviculales	Baciliophyceae
19	Navicula	Naviculaceae	Naviculales	Baciliophyceae
20	Aulacoseria	Aulacoseria	Centrales	Baciliophyceae
21	Merismopedia	Chrococcaceae	Centrales	Baciliophyceae
22	Phormidium	Oscillatoriaceae	Centrales	Baciliophyceae
23	Cymbella	Cymbellaceae	Cymbellales	Baciliophyceae
24	Nitzschia	Bacillariaceae	Bacillariales	Baciliophyceae
25	Oscillatoria	Oscillatoriaceae	Oscillatoriales	Cyanophyceae
26	Anabaena	Nostoceae	Nostocales	Cyanophyceae
27	Spirulina	Spirulinaceae	Spirulinales	Cyanophyceae
28	Microcystis	Microcystaceae	Chroococcales	Cyanophyceae
29	Tetraedron	hydrodictyceae	Shaeropleales	Cyanophyceae
30	Gloeocapsa	Chrococcaceae	Chroococcales	Cyanophyceae
31	Nostoc	Nostocaceae	Nostocales	Cyanophyceae
32	Arthrospira	Microcoleaceae	Oscillatoriales	Cyanophyceae
33	Chroococcus	Chrococcaceae	Chroococcales	Cyanophyceae
34	Staurastrum	Desmidiaceae	Desmidiales	Zygnemophyceae
35	Zygnema	Zygnemataeae	Zygnematales	Zygnemophyceae
36	Euglena	Euglenaeae	Euglenida	Euglenophyceae
37	Closterium	Closteriaceae	Desmidiales	Conjugatophyceae



107
108
109
110
111

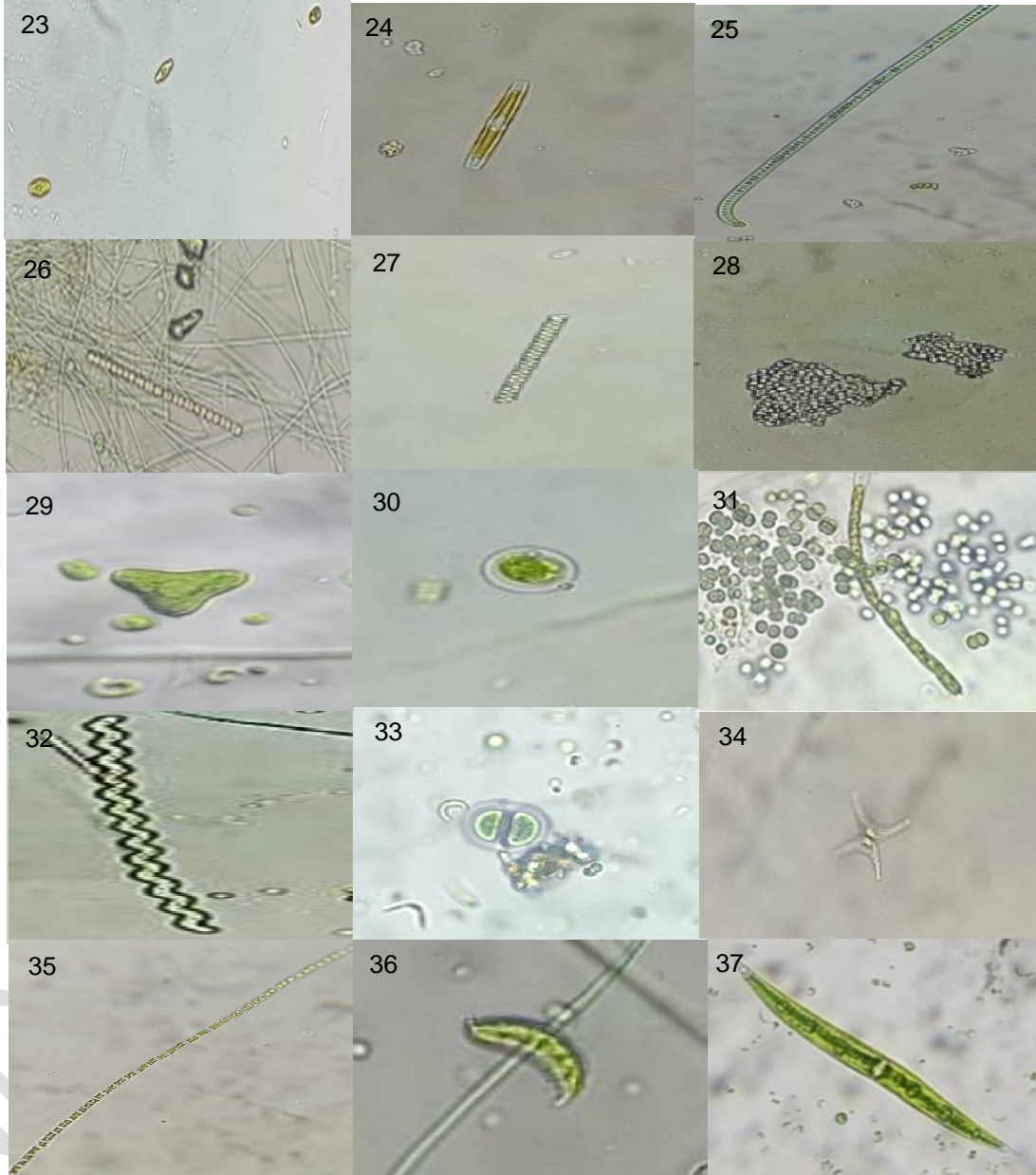
Fig. 3. The list of recorded phytoplankton species in Sunye Lake, 1. *Coelastrum* sp., 2. *Quadrigula* sp., 3a. 3b. 3c. 3d. 3e. 3f. 3g. 3h. *Scendesmus* sp., 4a. 4b. 4c. *Pedistrum* sp., 5. *Selenastrum* sp., 6. *Chlorella* sp., 7. *Monoriphidium* sp., 8. *Chlorogonium* sp., 9. *Chlorococcum* sp.

112 2020, species of cyanobacteria were the most abundantly occurred, the most present cyano-
 113 bacterial species were *Microcystis* [10] [4]. 13 family of alga were reported and cyano-
 114 bacteria were the dominant group in Meiktilalake in 2017 [5]. Cyanobacteria is great
 115 nitrogen fixer with photosynthetic capabilities useful by-products and bio-fuels, enhancing
 116 the soil fertility and reducing greenhouse gas emissions. These are offered as bio-agents as the
 117 precious bio-resource for sustainable development [26]. Cyanophyceae can contaminate



118
 119 **Fig.4. The list of recorded phytoplankton species in Sunye Lake, 10. *Golenkinasp.*, 11.**
 120 ***Dictyosphaeriumsp.*, 12. *Oocystis* sp., 13. *Westellasp.*, 14a. 14b. *Fragilariasp.*,**
 121 **15a. 15b. *Synedrasp.*, 16. *Pinnulariasp.*, 17. *Cyclotellasp.*, 18. *Naviculasp.*, 19.**
 122 ***Craticulasp.*, 20. *Aulacoseriasp.*, 21. *Merismopediasp.*, 18. *Naviculasp.*, 19. *Craticula***
 123 **sp., 20. *Aulacoseriasp.*, 21. *Merismopediasp.*, 22. *Phormidiumsp.***

124 surface waters supplies mostly during warm summer months. The toxic component is
 125 microcystin. Blooms of some species release toxins and lead to anoxia in the habitat of
 126 biota. Cyanobacteria inhabit a wide variety of habitats as free living, epiphytic, symbiotic
 127 or parasitic plants [19]. Species composition is highly sensitive to water quality and many
 128
 129



130
 131 **Fig.5.** The list of recorded phytoplankton species in Sunye Lake, 23. *Cymbella* sp., 24.
 132 *Nitzschia* sp., 25. *Oscillatoria* sp., 26. *Anabaena* sp., 27. *Spirulina* sp., 28. *Microcystis*
 133 sp., 29. *Teredon* sp., 30. *Gloeocapsa* sp., 31. *Nostoc* sp., 32. *Arthrospira* sp., 33.
 134 *Chroococcus* sp., 34. *Staurastrum* sp., 35. *Zygnema* sp., 36. *Euglena* sp., 37. *Closterium*
 135 sp.

136 species are habitat specific [14] and they may be reliable indicator organisms [22]. Current
137 study finds the pollution indicator species like microcystic species but no pollution was
138 occurred due to macrophyte.

139

140 Zygnenophyceae, *Staurastrum* sp. and *Zygnema* sp. were found in this study with 4% in
141 species composition. Zygnematophyceae, are the most diverse green algae, the closest
142 relatives of land plants and are useful model organisms [13][12][28]. They consist of
143 unicellular and filamentous algae, occupying freshwater and terrestrial habitats, whose
144 developmental features are very difficult to compare with the complexity of land plant [9].

145

146 Euglenophyceae can be considered as useful bio-indicators in assessing the health and
147 extent of deterioration of a lake ecosystem [1], euglenagenera is recorded as rarely in this
148 study with 2%.

149

150 In this study, species composition of Conjugatophyceae, *Closterium* sp. was 2%. The
151 genus *Closterium*, which is the closest unicellular relative to land plants, is the best
152 characterized charophyceae green algae with respect to the process of sexual reproduction
153 [25] and reported as bio-catalyst used for fuel and chemical production [18].

154

155 4. CONCLUSION

156

157 Checklist of phytoplankton is important for ecology study and conservation of the Lake. The
158 current study is first time to study the checklist of phytoplankton in Sunye Lake and should
159 be continuous study to update the checklist data of phytoplankton genera and seasonally
160 abundance which is important indicators of lake ecosystem.

161

162

163 REFERENCES

164

- 165 1. Ajayan AP, Rijstenbil JW, Kumar KG A. Environmental influence on the Euglenoids
166 species diversity and their abundance in Museum Lake, Thiruvananthapuram, India. Curr.
167 Sci. 2020; 118(10):94-102.
- 168 2. Ali HA, Owaid MN, Ali SF. Recording thirteen new species of phytoplankton in Euphrates
169 river environment in Iraq. Walailak J. Sci. & Tech. 2020; 17(3):200-211.
- 170 3. Araujo GS, Pacheco D, Cotas, J, Alves Da Silva W, Saboya J, Moreira RT, Pereira L.
171 Plankton communities. In: LPereira and AM Goncalves, editors. Plankton: Environmental

186

- 187 andeconomic importance for a sustainable future. IntechOpen, London, United
188 Kingdom;2022.
- 189 4. Ballot A, Mjelde M, Swe T. Integrated water resources management in Myanmar;
190 assessing ecological status in Inlay Lake. Norwegian Institute for Water Research
191 Preliminary Report 7162; 2017.
- 192 5. Ballot A, Swe T, Mjelde M, Cerasino L., Hostyeva V, Miles CO. Cylindrospermopsis and
193 deoxy cylindrospermopsis-producing *raphidiopsis raciborskii* and microcystin-producing
194 microcystis spp. in Meiktila Lake, Myanmar. *Toxins*. 2020; 12(232): 1-23.
- 195 6. Bhakta S, Adhikary SP. Algal diversity in two major rivers of eastern India and
196 phylogenetic assessment of their pollution. *Ecoscan*. 2012; 1: 07-14.
- 197 7. Cameron NG. Diatom methods: use in Archaeology. In: Scott A, Elias and Cary J Mock,
198 editors. *Encyclopedia of Quaternary Science* 2nd ed. Elsevier Academic Press. 2013; 516-
199 521.
- 200 8. CCPK, Climate Change Knowledge Portal: World Bank. User manual. 2021.
- 201 9. Delwiche CF, Cooper ED. The evolutionary origin of a terrestrial flora. *Curr. Biol*. 2015;
202 25(19)R899-R910.
- 203 10. Dine Naw MW, San DP, Aung Y. Occurrence of *Microcystis* toxic blooms in Indawgyi
204 Lake, Kachin state. University of Mandalay, Research Journal. 2020; 11: 1-9.
- 205 11. Enh S, Fang J, Ma P, Liu B, Zhang H, Lan D, Yang Z, Dolka PC, Wang Z. A study on the
206 characteristics of diatoms and ecological environment pollution in the main water of Tianjin,
207 China. 2021 3rd International Conference on Geoscience and Environmental Chemistry
208 (ICGEC2021) 290:03014. 5pp.
- 209 12. Gerrath JF. Conjugating green algae and desmids. In: JD Wehr, RG Sheath, editors.
210 *Freshwater algae of North America, ecology and classification, aquatic ecology*, 1st ed.
211 Elsevier Academic Press. 2002; 353-381.
- 212 13. Hall JD, McCourt R. Zygnematophyta. In: JM Archibald, Alastair GB, Simpson Claudio,
213 H Slamovits, LM Margulis, Melkonian, DJ Chapman, JO Corliss editors. *Handbook of the*
214 *protists*. Springer, Netherlands. 2017; 1-29.
- 215 14. Korhola A. Diatom methods: Data interpretation. In: Cary Mock, Scott Elias, editors.
216 *Encyclopedia of Quaternary Science* 2nd ed, Elsevier Academic Press. 2013, 494-507.
- 217 15. Khan MI, Shin JH, Kim JD. Current status, challenges, and optimization of a sustainable
218 and renewable industry for biofuels, feed, and other products. *Microb. Cell Factories*. 2018;
219 17(36): 1-21.
- 220 16. Klymiuk V, Barinova S, Lyalyuk N. Diversity and ecology of algal communities from the
221 regional landscape park "slavyansky resort", Ukraine. *J. Bot. Sci.* 2014; 3(2): 1-26.
- 222 17. Krienitz L. Algae. In: Gene E Likens, editor. *Encyclopedia of Inland Waters*. Elsevier
223 Academic Press. 2009; 103-113.
- 224 18. Liberato V, Benevenuti C, Coelho F, Botelho A, Amaral P, Jr Nei Pereira and Ferreira T.
225 *Clostridium* sp. as Bio-catalyst for fuels and chemicals production in a biorefinery context.
226 *Catalysts* 2019, 9(962): 1-37.
- 227 19. Nweze NO. Ecological implications and roles of cyanobacteria (Cyanophyta) in food
228 security. *Plant Prod. Res. J.* 2009; 13: 8-14.
- 229 20. Purbal R, Barus TA, Mulya MB, Ilyas S. Checklist of phytoplankton and their abundance
230 in Toba Lake, North Sumatra, Indonesia. *AACL Bioflux*. 2021; 14(5): 3104-3110.
- 231 21. Pavelic P, Sellamuttu SS, Johnston R, McCartney M, Sotoukee T, Balasubramanya S,
232 Suhardiman D, Lacombe G, Douangsavanh S, Joffre O, Latt K, Zan AK, Thein K, Myint
233 A, Cho C, Htut YT. Integrated assessment of groundwater use for improving livelihoods in
234 the dry zone of Myanmar. *IWMIR Research Reports* 229608, International Water Management
235 Institute. Colombo, Sri Lanka. 2015; DOI: 10.22004/ag.econ.229608
- 236 22. SSabater. Diatoms. In: Gene E. Likens editors, *Encyclopedia of inland waters*. Elsevier
237 Academic Press. 2009; 149-156.
- 238 23. Sann KK, San NN, Htwe TN, Reh P. Study on some algal species of chlorophyta found

239 in Naung-Yar Lake, Loikaw, Kayah State. 3rd Myanmar Korea Conference Research
240 Journal 2018; 13(1): 354-359.

241 24. Sein AM, Kyaw NSL, Soe WM. Occurrence of microorganisms in the Mya Kan Thar
242 Lake, Loilem township, southern Shan state. Panglong Universities Research Journal. 2017;
243 8: 1-12.

244 25. Sekimoto Hiroyuki, Abe Jun, Tsuchikane Yuki. New insights into the regulation of sexual
245 reproduction in *Closterium*. Int. Rev. Cell Mol. Biol. 2012; 297: 309-338.

246 26. Singh JS, Kumar A, Rai AN, Singh DP. Cyanobacteria: A precious bio-resource in
247 agriculture, ecosystem and environmental sustainability. Front. Microbiol. 2016; 7(529): 1-19

248 27. Swe T, Miles CO, Cerasino L, Mjelde M, Kleiven S, Ballot A. *Microcystis*, *Raphidiopsis*
249 *raciborskii* and *Dolichospermum smithii*, toxin producing and non-toxic cyanobacteria in
250 Yezin Dam, Myanmar. Limnologia. 2021; 90(125901): 1-9.

251 28. Szövényi P, Waller M, Kirbis A. Evolution of plant body plan. Current Topics in
252 Developmental Biology. 2019; 131: 1-34.

253 29. Taylor EL, Taylor NT, Thomas, Krings Michael. Algae. In: Thomas NT, Taylor, Edith L
254 Taylor, Michael Krings, editors. Paleobotany, the Biology and evolution of fossil plants 2nd
255 ed. Elsevier Academic Press. 2009; 121-158.

256 30. Vuuren S, Janse van, Taylo, J, Gerber A, van Ginkel C. Easy identification of the most
257 common freshwater algae. A guide for the identification of microscopical algae in South
258 African freshwaters. North-West University and Department of Water Affairs and Forestry.
259 2006; 212.

260 31. Wolanski E, Elliott M. Estuarine ecological structure and functioning. In: Eric Wolanski
261 and Michael Elliott, editors. Estuarine ecohydrology 2nd ed. Elsevier Academic Press. 2015;
262 157-193