

Original Research Article

Ameliorative Activities of Morus and Jamun against Cr induced Andro-hepatic Anomalies

Abstract:

Chromium (Cr) is a vital micronutrient for sugar metabolism while its unauthorized use may agonize health fatalities. This study was conducted about the novelty of Cr⁺⁶ histopathological potentials along with Mulberry Fruit Extract and Jambul Fruit Extract to define the bio-chelation and ameliorative aptitude.

The histological finding in Cr exposure specify; cessation of testicular seminiferous tubules (ST), annihilation of smooth muscles in basement membrane, Leydig's cell and spermatids. The ST have halted spermatogenesis, with irregular boundary and dead spermatogonia and Leydig's cells are disorganized. The sperm [defined CSA] CSA, tail length and middle piece diameter ($p \leq 0.001$) significantly reduced along with significant elevation of hepatocytes nuclei, central vein CSA and mean width of Sinusoidal Spaces as compared to control. The protuberant marks of steatosis, fibrosis, dehydration and atrophy were nullified by designated fruit extracts and their bio-chelating effects was obvious due to the presence of anthocyanin, β -sitosterol and phytochemicals.

Keywords: Chromium, steatosis, fibrosis, dehydration and atrophy.

1. Introduction:

The unhygienic water frequently used to irrigate crops produces inevitable anomalies (Asmatullah *et al.*, 1998). Metals such as lead, mercury, chromium, arsenic, copper, cadmium, and iron in contaminated water and food supplements have the potential to generate reactive oxygen species (Stohs *et al.*, 2001), affect immune system and body organs such as testes, kidneys and liver (Jayabarath *et al.*, 2009). The adequate amount of chromium (Cr) as supplement is used to enhance endocrine system and alteration of behavioral-related activities (Molinero and Marquez, 2009) but their ridiculous use produces severe injuries; block the androgen receptors and excess androgen produces hepatic, renal and hematologic anomalies (Thompson and Bannigan, 2008). The elevated androgen inhibits the production of endogenous androgens by Leydig cells, which indemnities liver and testicular seminiferous tubules (Coss *et al.*, 2012).

Hepatocyte metabolizes, detoxify and inactivate the [define ROS the first time to enable readers understand what you mean] ROS by antioxidant (Keren *et al.*, 2013), and many herbs from Pakistan have been investigated as source of antioxidants to augment free radical scavenger and metal chelating activities (Hussain *et al.*, 2012), so the plants extracts have ameliorative competency against heavy metals (Batoool *et al.*, 2010; Swami *et al.*, 2012; Okon *et al.*, 2013). Antioxidant may be synthesized in the body or obtained in the diet; have capability of β -carotene-linoleate and β -sitosterol with reducing power, superoxide, nitric oxide-scavenging capacity and ferrous ion chelating potency (Rout and Banerjee, 2007) and their anthocyanin prevents lipid peroxidation (Ozsahin *et al.*, 2012). The flavonoids and polyphenols in *Trianthema triquetra* (Chitra *et al.*, 2007), *Pisonia aculeata* (Palanivel *et al.*, 2008), *Benincasa hispida* and Castor oil (Shetty *et al.*, 2008) are very beneficial in scavenging the free radicals (Alia *et al.*, 2008) by regulating aspartate aminotransferase, alanine aminotransferase, total serum bilirubin and malondialdehyde in hepatocytes (El-Sayed *et al.*, 2011).

Table: 1; Plants phytochemical compounds used for bio-chelation.

Plant	Compound	Bio-chelation	References
Fruit extract	Anthocyanin	Fe	Veigas <i>et al.</i> , 2007, 2008
Mulberry extracts	phenolics, β -sitosterol and anthocyanins	CCl ₄ and heavy metals	Jude and Catherine, 2011; Awasthi, 2012
<i>Morus alba</i>	Phytochemicals	CCl ₄	Ali, 2010
<i>Syzygium cumini</i>	Antioxidant, anthocyanin	Nitric oxide, Fe, CCl ₄	Ki-Tae <i>et al.</i> , 2005; Benherlal and Arumughan, 2007
	Flavonoid	Fe, methylmercury	Abalea <i>et al.</i> , 1999
<i>Moringa oleifera</i>	Phytochemicals	Cr	Akunna <i>et al.</i> , 2012
<i>Hippophae rhamnoides</i>			Geetha <i>et al.</i> , 2003
Plants, fruits, vegetable	Vitamins E/C	Heavy metals	Mittal and Flora, 2007
		Pb	Rendon-Ramirez <i>et al.</i> , 2007
<i>Mangifera indica</i>	Phytochemicals	Fluoride	Narasimhacharya <i>et al.</i> , 2011
Red cabbage		Heavy metals	(Glinska and Gabara, 2011)
Plants	L-carnitine	CCl ₄	Demirdag <i>et al.</i> , 2004
<i>Salvia plebeia</i>	Flavonoid		Xiao-feng, 2011
Plants	Ascorbic acid, tocopherol	Arsenic	Ramanathan <i>et al.</i> , 2005
Plants derived drug	Deferiprone	Fe, Al	Albina <i>et al.</i> , 2000

Mulberry contains antioxidants which are used as cytotoxic protective activity to reduce edema (Chuanguang *et al.*, 2010), with ameliorative effect on hyperlipidemia, lipogenesis and fatty acid oxidation (Volpato *et al.*, 2011). *Morus nigra* have anti-cancerous, anti-inflammatory, antibacterial and anti-fungal, antimicrobial and radical rummaging activities (Hamdy, 2012). Their flavonoids quercetin protects and prevents lipid peroxidation (Pereira *et al.*, 2013). Pharmacologically *Syzygium cumini* fruit extracts protect the cultured human peripheral blood lymphocytes from DNA damage (Jagetia and Baliga, 2003) and are also used to treat human breast cancer (Goyal *et al.*, 2010), repair hepatocyte from iron damages (Abalea *et al.*, 1999), protect individuals from hydrogen peroxide injuries and gamma-irradiations (Jagetia *et al.*, 2008). Their anthocyanins are anti-spasmodic (Das and Sarma, 2009), ameliorate hepatic enzymes (Hossain *et al.*, 2010) normalize serum ALT and AST levels and have antagonistic behavior against methylmercury (Ayyanar and Subash-Babu, 2012). The flavonoids in litchi (*Litchi chinensis*) are used against cancer (Wen *et al.*, 2014), *Viola odorata* for asthma (Qasemzadeh *et al.*, 2015), red clover for hot flashes/menopausal symptoms (Ghazanfarpour *et al.*, 2016), green tea for the risk of prostate problems (Guo *et al.*, 2017), cactus (*Opuntia ficus-indica*) cladodes on methotrexate-induced oxidative damage (Amira *et al.*, 2018) and chamomile

(*Matricaria recutita*) as antioxidant and anticancer activities (Bayan *et al.*, 2019). The enzymatic changes/gene expressions are almost the same in humans and rodents (Zhang *et al.*, 2013) so the mammalian model mice, was selected for *in vivo* study, and the cheapest Pakistan cultivated economical fruit extracts were selected to probe the poisonous effects of heavy metals and shield against andro-hepatic anomalies at micrometric level.

2. MATERIAL AND METHODS:

The study was conducted on 25-30g/3-4months old 50 male albino laboratory mice (*Mus musculus*) that were kept at 26±4 C°/45% relative humidity with 12-hr L/D cycles throughout experimental duration.

2.1 Preparation of Solution and Fruit Extracts: Dose for various groups were prepared from pure Potassium dichromate ($K_2 Cr_2 O_7$), stock solution of 1000ppm and diluted up-to 50ppm required solutions. Ripe black fruits of *Morus nigra* and *Syzygium cumini* were washed, and 100g of their pulp was blended in an electric juicer in 100ml cooled boiled drinking water for 5minutes and finally centrifuged at 500rpm for 10minutes. The supernatant was immediately placed in sterilized 5ml capacity ice-cube dishes, store in sterilized plastic bags at -30°C and a fresh thawed cube was used for each experiment at room temperature.

2.2 Experimental Groups: Animals were randomly divided into 5 groups (n=10) as: Control group (C); provided boiled cooled mineral water for 15days, Cr-group (Cr); provided 50ppm Cr-solution for first 10days at *ad libitum* followed by simple mineral water for next 5days, Cr +Mulberry group (Cr-M); as Cr group but the last 5days they were given MFE, similarly Cr +Jambul group (Cr-J) given JFE and Cr +Mulberry+Jambul group (Cr-MJ) were given equally mixed MFE and JFE through gavage as post-treatment 0.25ml/12hrs for next 5 days.

2.3 Histological and Micrometric Analysis: The animals were euthanized by cervical dislocation and the body organs were dissected out on day 16 for histological hematoxylin and eosin (HE) staining, testicular smear formation and micrometric analysis following Khawja Raees Ahmad (2011) protocol. Photograph at 100×, 400× and 1000× with 7.2 MP digital camera (Sony) were processed in CorelDRAW11 for micrometry. The results were expressed as mean ± SD and the data was analyzed through ANOVA (two factors, without replication) and Duncan's

Multiple Range Test (post hoc analysis).

3.

RESULTS:

[Please document the results in words in more detail than you have done so far in good English]

In the control group the testes of animals indicated the clear boundaries of seminiferous tubules (ST) with integral basement membranes, spermatogonia (Sp.g) were evenly disseminated and multiple whirls of spermatocytes (Sp.c), secondary spermatocytes (Se.c), spermatozoa as parrot beak headed sperm (PBH) and club headed sperms (CH) with prominent elongated tail (Sp.T) were visible.

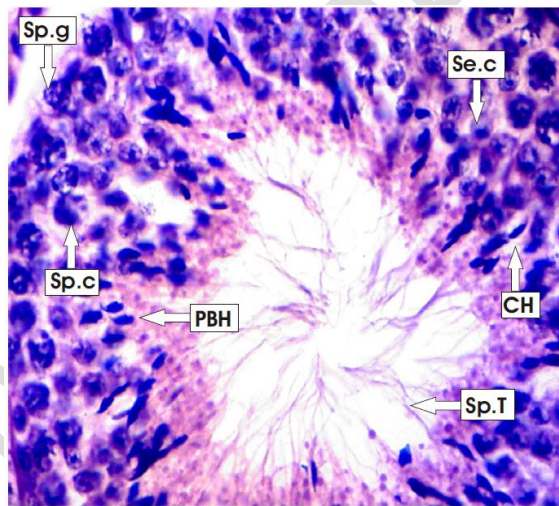


Fig 1: Mice Seminiferous Tubule, control group.

Sp.g; spermatogonium, Se.c; sertoli cell, Sp.c; spermatocyte, PBH; parrot beak headed spermatozoa, CH; club headed spermatozoa, Sp.T; Spermatozoa Tail

The [write ST in full] (ST) in the animals without Cr treatment were symmetrical equally distributed rounded with prominent Leydig's cells (Fig 2-a), spermeogenesis (Fig 2-b) and spermatozoa with elongated tails directed towards the lumen (Fig 2-c). The spermatogonium has prominent dark stain nuclei without vacuolation and cracks (Fig 2-d). In Cr treated group there was breakdown of basement membrane, destruction of smooth muscles, Leydig's cell (Fig 2-e) and spermatid without spermeogenesis (Fig 2-f). The tailless sperm (Fig 2-g) and debris filled in ST lumen moved like vortex (Fig 2-h). The ST had halted spermatogenesis, with irregular

boundary and basement membrane loses at the inter-tubular junction (Fig 2-i). The dead spermatogonia and Leydig's cells were disorganized (Fig 2-j, l) and whirls of primary and secondary spermatocytes broke and lost their regular symmetry (Fig 2-k).

The Morus as post-treatment reorganized the basement membrane (Fig 2-CrM-m), with prominent Sertoli cells (Fig 2-CrM-n), spermatogenesis (Fig 2-CrM-o) with regular whirls of Sp.g, Se.c, Sp.c, PBH, CH and Sp.T (Fig 2-CrM-p). [improve upon the writing of this sentence]

The Jambul improve Leydig's cell, basement membrane along with smooth muscles fill up the vacuolated regions (Fig 2-CrJ-r), bulbous spermeogenesis (Fig 2-CrJ-s), reorganization of primary and secondary spermatocytes (Fig 2-CrJ-t,u). The co-treatment with synchronized effects of Morus and Jambul remove vacuolated cell and reduce the debris by re-organizing cellular texture and symmetrical whirls of ST (Fig 2-CrJM-w,x,y,z). [re write the English to convey the message you want to convey in good English]

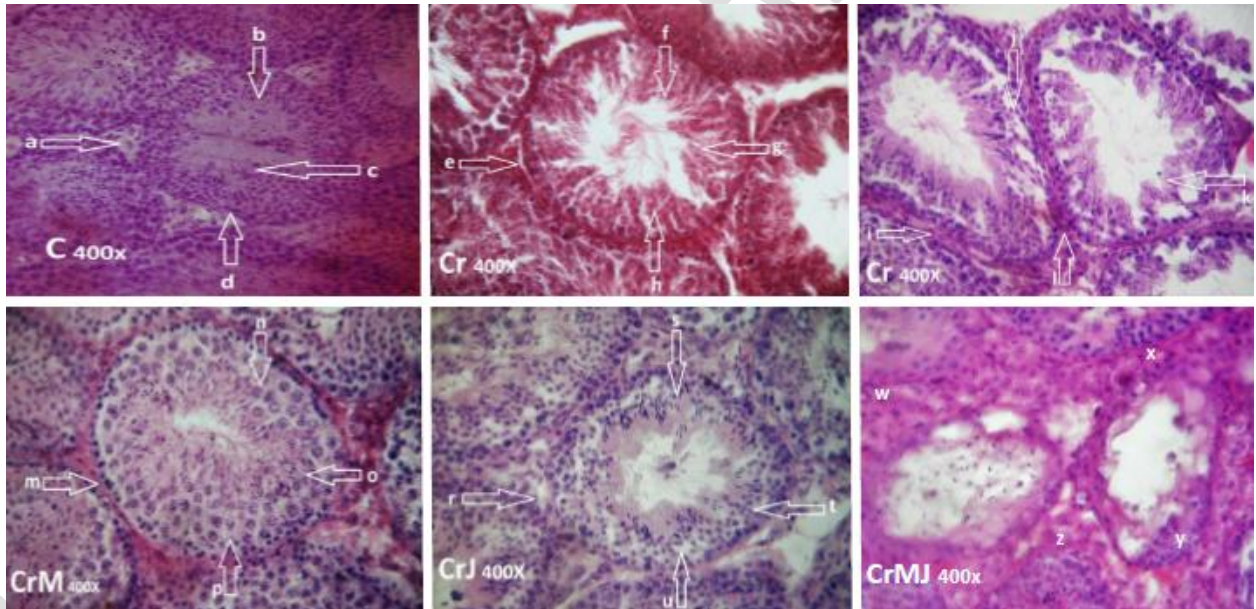


Fig: 2; Histological sections of mice testis in control (C), Cr treated (Cr), Morus (CrM), Jambul (CrJ) and combine co-postreatment of Morus and Jambul (CrMJ) groups.

The testicular and seminal vesicle smear of normal animals as control group had PBH, with long tail without any kink (Fig 3-1,5) inverse to Cr treated in which sperm had kink and weak connection b/w sperm head and tail (Fig 3-2,7) with halted spermatocytes and sperms without tail (Fig 3-8,9). The Morus and Jambul re^{habilitated} the anomalies (Fig 3-3, 4, 6) the Cr induced anomalies.

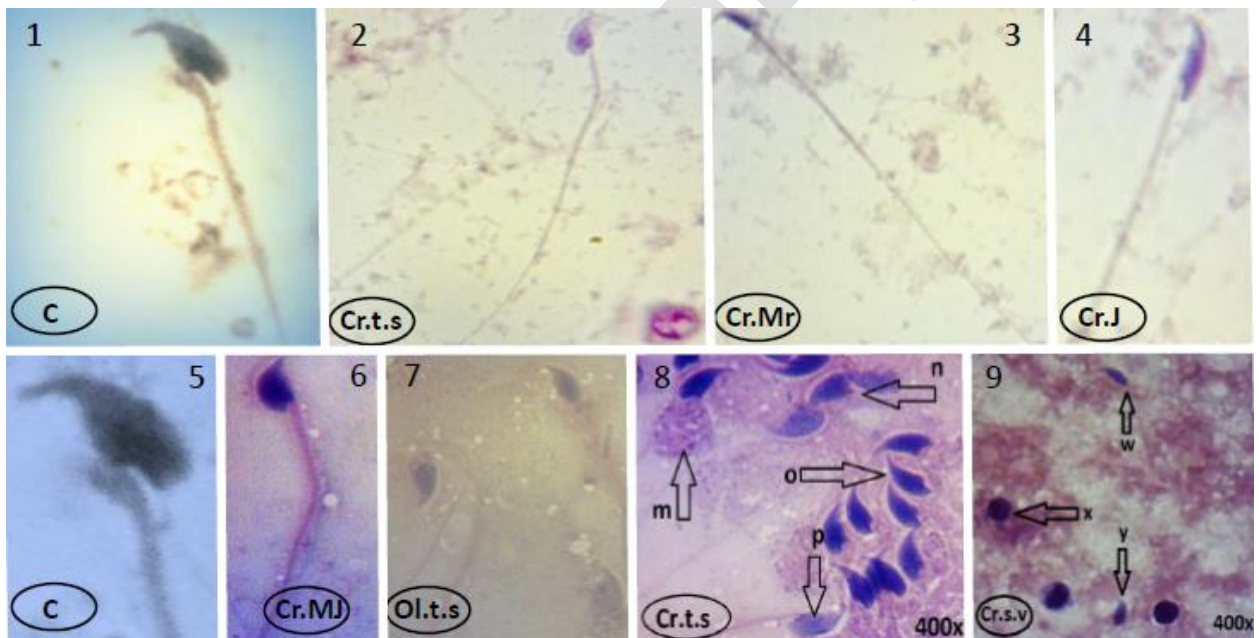


Fig: 3; Testicular smear with sperm morphology in control, Cr-treated and fruit extracts groups.

C; control, Cr; chromium, t.s; testicular smear, Mr; Morus, J; Jambul, ol; oil emulsion, s.v; seminal vesicle fluid.

3.1 MICROMETRIC HISTOLOGICAL STUDY OF MICE TESTES

3.1.1 SPERM MICROMETRIC STUDY: The mean CSA of head, length of tail and diameter of mid piece was measured from testicular smear as;

Table: 2. Sperm micrometry, ameliorative effects of fruit extracts on Cr induced anomalies.

PARAMETERS	GROUPS				
	C	Cr	Cr-M	C-J	Cr-MJ
PBH CSA(μ^2) of head ***	† 13.91±0.64 ^a	7.86±0.65 ^b	15.39±0.74 ^a	12.89±1.25 ^a	15.78±1.59 ^a
PBH tail length (μ)*	85.57±12.11 ^a	75.92±12.05 ^a	102.10±5.45 ^b	85.99±3.25 ^a	86.84±1.70 ^a
PBH Middle piece. DM (μ)**	0.08±0.06 ^a	0.58±0.09 ^b	0.75±0.05 ^c	0.95±0.14 ^a	1.05±0.05 ^d
CH CSA(μ^2) of head*	11.37±0.98 ^a	9.16±1.85 ^a	14.05±4.05 ^a	15.7±7.04 ^a	11.19±0.73 ^a
CH tail length(μ)*	81.07±5.55 ^a	56.27±14.43 ^b	86.28±16.89 ^a	87.46±5.55 ^a	67.51±10.90 ^{ab}
CH Middle piece. DM (μ)*	0.96±0.12 ^a	0.39±0.15 ^c	0.78±0.61 ^{ac}	0.67±0.08 ^{bc}	1.25±0.35 ^d

C: control, **Cr:** chromium treated, **Cr-M:** chromium+MFE, **Cr-J:** chromium+JFE, **Cr-MJ:** chromium+MFE+JFE. CSA: mean cross- sectional area of (PBH) sperm, DM: diameter (thickness) of parrot beak headed sperm and club headed (CH) sperm mid piece at 400X. * : $p \leq 0.05-0.01$, ** : $p \leq 0.001$ *** : $p \leq .0001$ {Statistical analysis (ANOVA: two factors without replication)} , † group means \pm SEM, $\mu = \mu\text{m}$, ^{a b c}: Anyone two groups not sharing a lower case letters differ significantly from each other (Duncan's Multiple Range comparison- post hoc analysis), n=10.

3.1.2 MICROMETRIC HISTOLOGICAL STUDY OF MICE LIVER:

The cross sectional of liver indicate destruction of hepatocytes, with significant ($p \leq 0.001$) elevation of hepatocytes nuclei, central vein CSA and mean width (μm) of Sinusoidal Spaces (S.S) at (400 \times) while mean number of hepatocytes and mean relative area occupied by hepatocytes per unit area were significantly ($p \leq .0001$) reduced in Cr treatment as compared to control. [improve upon the delivery of the English]

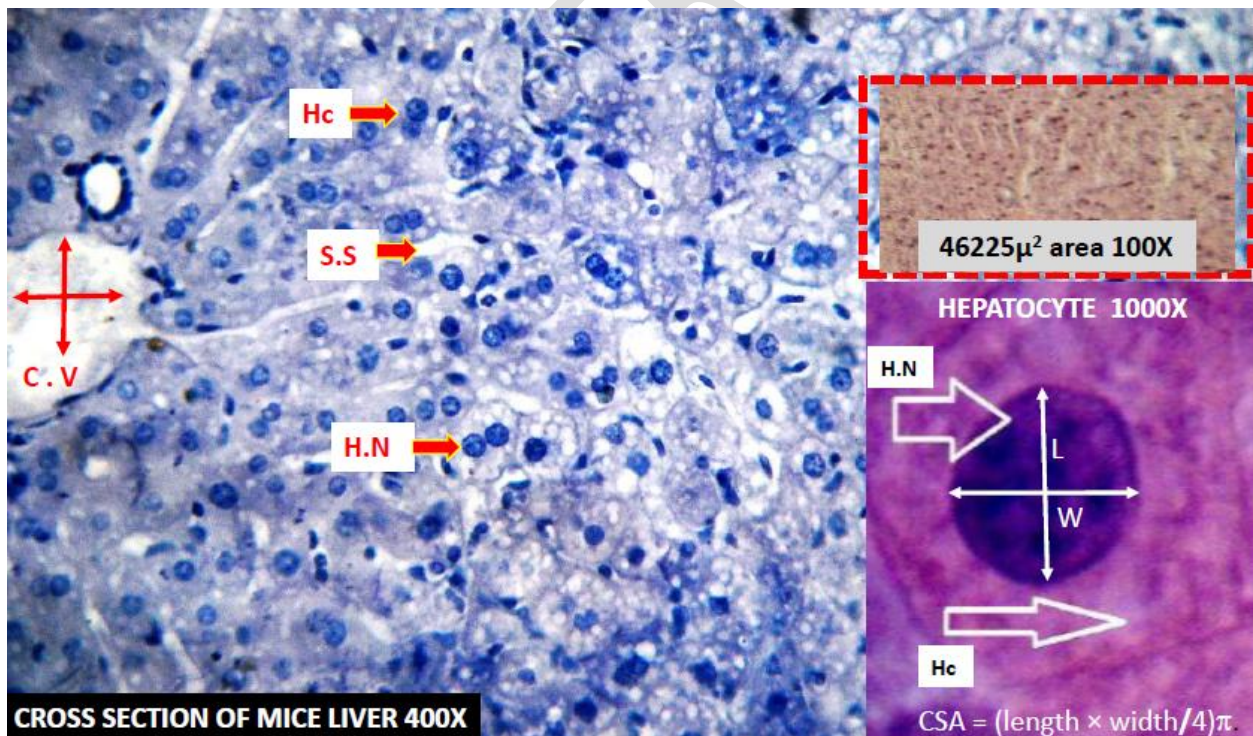


Fig: 4; Histology of Liver. The cross sectional of liver indicate hepatocytes, their nuclei and central vein CSA, Mean width (μm) of Sinusoidal Spaces (S.S) at (400 \times), Mean number of hepatocytes (N. Hepat) in 46225 μ^2 area (100 \times), Mean relative area occupied by hepatocytes (R.A.Hepat) in 46225 μ^2 area (100 \times).

Table 3: Micrometry of mice liver, ameliorative effects of fruit extracts on Cr induced anomalies.

PARAMETERS	GROUPS				
	C	Cr	Cr-M	Cr-J	Cr-MJ
CSA (μ^2) Hc***	† 237.95±12.56 ^a	187.39±19.19 ^b	143.14±5.58 ^c	171.95±8.59 ^b	228.76±10.78 ^a
CSA (μ^2) H.N***	32.59±1.29 ^a	43.98±1.17 ^b	29.18±1.25 ^c	39.88±1.87 ^d	32.89±0.75 ^a
CSA (μ^2) C.V ***	2849.14 ±255.09 ^a	4213.55 ±773.89 ^b	2090.25 ±329.59 ^a	2250.24 ±201.58 ^a	6748.31 ±1466.29 ^c
Width(μ m)S.S***	6.17±0.63 ^a	7.25±0.83 ^b	5.18±0.66 ^c	7.09±0.67 ^b	5.05±0.26 ^c
N. Hc /area ***	112.06±6.07 ^a	80.64±3.47 ^b	56.75±5.49 ^c	95.13±4.45 ^d	85.89±0.09 ^b
R.A.Hc /area***	26504.77 ±1457.93 ^a	12995.14 ±555.12 ^b	7593.72 ±722.14 ^c	16380.55 ±699.12 ^d	19639.12 ±762.14 ^e

C: control. **Cr:** chromium treated, **Cr-M:** chromium+MFE, **Cr-J:** chromium+JFE, **Cr-MJ:** chromium+MFE+JFE. Mean cross sectional area (μ^2) of hepatocytes (Hc) at (400 \times), Mean CSA (μ^2) of hepatocytic nucleus (H.N) at (400 \times), Mean CSA (μ^2) of central vein (C.V) at (40 \times), Mean width (μ m) of Sinusoidal Spaces (S.S) at (400 \times), Mean number of hepatocytes(N. Hepat) in 46225 μ^2 area (100 \times), Mean relative area occupied by hepatocytes (R.A.Hepat) in 46225 μ^2 area (100 \times). n=10. Statistical analysis (ANOVA: two factors without replication).*: $p \leq 0.05-0.01$; **: $p \leq 0.001$; ***: $p \leq .0001$, † group means \pm SEM, ^{a b c}: Anyone two groups not sharing a lower case letters differ significantly from each other (Duncan's Multiple Range comparison- post hoc analysis).

4. DISCUSSION: Cr as environmental toxicant produce ROS and induce andro-hepatic anomalies evident by presence of necrosis and steatosis in testes and liver due to β -oxidation which divert metabolic pathway towards lipogenesis (Damek-Poprawa, 2003). That process effect hepatocytes and kuffer cells to induce cirrhosis, dehydration and fibrosis. The lipid

peroxidation **distracts** the steroid level and elevate testosterone. The ketonic bodies from fatty acids also drop pH which induce atrophy **and caused** **fluctuations** of **biochemical, hematological** and lipid profiles (Fig; 2, 4) as Cd induce atrophy, testicular architecture disorganization and germinal epithelium disruption (Sharma *et al.*, 2013). These process increases the acidity which ruptured the endothelial lining of testes indicate the sloughing and degeneration by the exposure of Cr as debris and dislodge spermatid in the lumen of ST, which altered their diameter which exactly co-related with Fabricia *et al.*, (2010) study about Cd toxicity. The primary hypertrophy with Cr exposures seems to cause accumulation of undifferentiated cells due to the lack of meiosis and spermatogenesis to produce spermatogenic arrest (Boekelheide *et al.*, 2000). The necrosis of sertoli cells leading to the dislodgment of dead spermatic cells in ST due to the deficiency of nutrition, evident by significant elevation of CSA of ST may cause testicular hypoplasia and destruction of Leydig's cell **in the long run and causing** infertility (Giagulli and Vermeulen, 1988). ROS by Cr exposure **affects** the mitochondrial membrane permeability with deficiency/insufficiency of sugar metabolism which causes the depletion of germinal epithelium in the ST and **induces** desquamation; shedding of the outermost ST basement membrane (Fig; 2). Sertoli cells are interconnected by tight junctions; for blood-testis barrier, which temporarily **opens up and permits** the passage of spermatogenic cells and the loss of interstitial cells affects the process of spermatogenesis and spermiogenesis. Cr exposure **distorts** the sperm heads with significant elevation of tail-less spermatozoa also **indicates** the possible deformities at the androgen receptor during terminal differentiation of spermatids (Fig; 3, Tab; 2). The rodent **spermatozoa** have one or more apical regular symmetrical hooks (Firman *et al.*, 2011) and the spermatozoa show the prominent anomalies **within the head of the** sperm with irregular and wavy intermediate shape and tail less appearance in Cr group (Fig; 3). Micrometric analysis

(Tab; 2) of spermatozoa specified the alterations in CSA of sperm head, thickness of mid-piece, and length of the tail, that can be extrapolated with Cr related DNA damage and loss of polymerization of the micro tubular array into microtubules of the sperm tail (Vijaya *et al.*, 2013). The anabolic androgenic steroids can be ameliorated by drugs and the pharmacological products of plants like anthocyanin, β -sitosterol and α -Tocopherol (vitamin E). Phytochemicals are the most important lipid-soluble antioxidants and interrupt the chain reactions of lipid peroxidation to enhance the activity of natural antioxidants that scavenge the free radicals evident by blue green algae (Won *et al.*, 2012). The synchronized effect of MFE and JFE significantly higher spermatogonia and primary spermatocyte and have more ameliorative effect to improve the histological and micrometric cellular level of testis and liver, so the phytochemicals are the best natural sugar and cholesterol regulators as compared to synthetic drugs (Rahmani *et al.*, 2013) [change the language wording in this sentence to improve upon the delivery of the English language to convey the correct information].

Apart from hepato-lipogenicity, atrophy, dehydration, fibrosis and hepatocytic necrosis reported in this study has been considered to be oxidative stress contributed by Cr exposure and the defense against free radicals is associated with activities of SGOT, SGPT and bio-chelation of heavy metals from body. The environmental chemical exposure in the induction and progression of various diseases is significant (Kaiser *et al.*, 2013). The hyperlipidemia may indicate anomalies of anterior pituitary, liver-biliary dysfunction, and lipoprotein lipase cofactor deficiency corticosteroids (McCarty, 2004). LDL cholesterol and excess lipid with rise in HDL and VLDL damage liver and cause hepatic steatosis and displace the nucleus towards periphery. Histological studies of liver at micrometric level indicate the alteration central vein CSA in Cr treated group, due to accumulation of debris by necrosis. Micrometric data (Table 3) showed

significant decline in the CSA of central veins (CV), number of hepatocytes/area and hepatocytes along with their nuclei CSA increase the sinusoidal spaces (SS) clearly indicate hepatocytes necrosis liver parenchyma and hepatocytes (Muthukumaravel and Rajaraman, 2013), also indicate hypothyroidism, glucocorticoid excess and the adrenal gland overproducing cortisol behavior by heavy metals exposure (Agnes *et al.*, 2012). MFE and JFE analogous to citrus fruits protect the membrane integrity resulting in a reduction of RBC hemolysis and increased the amount of platelets due to their flavonoids (Heroor *et al.*, 2013). [improve upon the English] In humans the stomach acts as a site for anthocyanin absorption from food, cyanidin-3-glucoside and cyanidin-3, 5-diglucoside, penetrate into human's blood through liver cells (Milbury *et al.*, 2010). The anthocyanin-rich extract decreases the lipid peroxidation; to normalize cholesterol by up regulating the peroxisome proliferator-activated receptors and influence the testosterone metabolism to ameliorate hyperglycemia and reproductive anomalies.

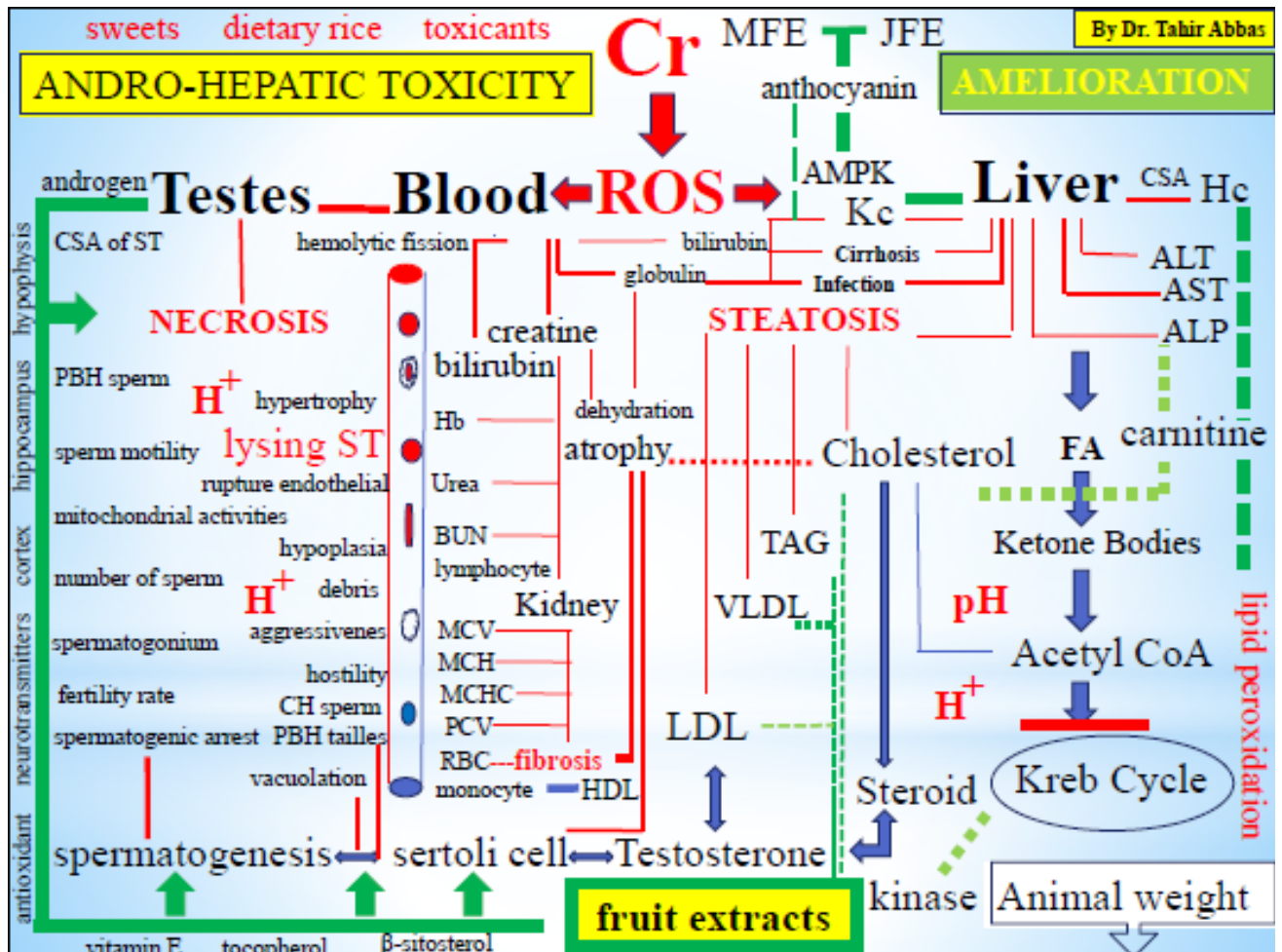


Fig: 5; Comprehensive summary of Ameliorative role of phytochemicals against Cr induced Andro-hepatic anomalies in mice.

The ameliorative effect of melatonin also affects the spermatogenic proliferation in ST and metalloid exposure like vitamin-E reduces the oxidative damage induced by Pb (Penna-Videau *et al.*, 2012). Protective activities of plants (deferiprone) act as an aluminum chelator and nullify the Al-induced toxicity (Albina *et al.*, 2000). Chemical compounds isolated from *Morus nigra* like anthocyanin, betulinic acid, flavonoid, β -sitosterol and germanicol (Naowaboot *et al.*,

2009), and from *Syzygium cumini* are oleanolic acid, isoquercetin, quercetin, myricetin, tannins, delphinidin, petunidin, malvidin-diglucosides, friedelin, ellagic acid, gallotannin, ellagitannin, betulonic acid, kaempferol, gallic acid, myricetine, pinocarveol, cineole, geranyl-acetone, α -cadinol, eucarvone, muurolol and α -myrtenal have medicinal abilities and can be used in drugs (Kanerla, 2009).

The heavy metals induced testicular and hepatic histoarchitecture grievances which can be attenuated and chelated by using specific plants extracts as supplements (Singh *et al.*, 2012). Traditional medicinal plants are used in amelioration of diseases because plants components like antioxidants have **the** ability to chelate the heavy metals and organs can be recovered after chelation. Antioxidant **plays** significant role in the treatment of Cr induced oxidative stress as efficient chelators and have radical scavenging and apoptosis preventing abilities (Atef and Al-Attar, 2011; Lim *et al.*, 2013). Natural fruit extract **has** no side effect and **does** not alter the normal cecal microbial composition and intestinal microbiota; essential for carnitine palmitoyl transferase-1 pathway during rehabilitation (Koeth *et al.*, 2013). The traditional Chinese herbal medicines are preferred **as compared** to modern synthetic drugs (Jieyu Zuo *et al.*, 2017) and auxiliary modern chimeric antigen receptor T-cell therapy against cancer (Van Schandevyl *et al.*, 2018) along with phytochemicals supplementations will ensure amelioration without side effects in future should be encouraged and sponsored.

5. CONCLUSION: There is no literature available for the co-treatment of Morus and Jambul, but these findings open the door and results authorized findings about bio-chelation and amelioration of heavy metals in the body. The modern allopathic medicines have limited therapeutic options due to their huge serious side effects while herbal drugs must be used as an alternative way to cure diseases. As this study is being conducted on a mammalian model the results obtained will be helpful in order to make clinical recommendation of its safe and

beneficial use for the human populations and that approach should be encouraged and sponsored.

6. REFERENCES:

- Abalea, V., Cillard, J., Dubos, M. P. 1999. Repair of Fe induced DNA oxidation by the flavonoid myricetin in primary rat hepatocyte cultures. *Free Radic. Bio. Med.* 26: 1457-66.
- Agnes, C., Nickmilder, M., Dumont, X., Lundh, T., Skerfving, S., Bernard, A. 2012. Associations between proteins and heavy metals in urine at low environmental exposures: evidence of reverse causality. *Toxicol. Lett.* 210 (3): 345-52.
- Akunna, G. G., Ogunmodede, O. S., Saalu, C. L., Ogunlade, B. 2012. Ameliorative effect of *Moringa oleifera* leaf extracts on Cr-induced testicular toxicity in rat testes. *World. J. Life Sci. Med. Res.* 2(20): 2249-74.
- Albina, M. L., Belles, M., Sanchez, D. J Gomingo, J. L. 2000. Evaluation of the protective activities of deferiprone, an Al- chelator, on Al-induced developmental toxicity. *Teratology.* 62: 86-92.
- Ali, R. F. M. 2010. Effect of pomposia (*Syzygium cumini*) fruit juice on the stability of fried sunflower oil. *J. Food Technol.* 8(2): 30-8.
- Alia, S. S., Kasojua, N., Luthraa, A., Singha, A. 2008. Indian medicinal herbs as sources of antioxidants. *Food Res. Int.* 41:1-15.
- Amira, Akacha., Tarek, Rebai., Lazhar, Zourgui., Mohamed, Amri. 2018. Preventive effect of ethanolic extract of cactus (*Opuntia ficus-indica*) cladodes on methotrexate-induced oxidative damage of the small intestine in Wistar rats. *J. Can. Res. Ther.* 14(10): 779-84.
- Aowaboot, J., Pannangpetch, P., Kukongviriyapan, V., Kukongviriyapan, U. 2009. Mulberry leaf extract restores arterial pressure in chronic diabetic rats. *Nut. Res.* 29(8): 602-08.
- Asmatullah, Qureshi, S. N., Shakoori, A. R. 1998. Hexavalent Chromium-induced congenital abnormalities in chick embryos. *J. Appl. Toxicol.* 18: 167-71.
- Atef, M., Al-Attar. 2011. Antioxidant effect of vitamin E treatment on some heavy metals-induced renal and testicular injuries in male mice. *Saudi J. Bio. Sci.* 18: 63-72.
- Awasthi, M. 2012. Relevance of Alkaline Phosphatase activity of immobilized green algae and cyanobacteria for heavy metal toxicity monitoring. *J. Mater. Environ. Sci.* 3(3): 446-51.
- Ayyanar, M., Subash-Babu, P. 2012. *Syzygium cumini*, a review of its phytochemical constituents and traditional uses. *Asian. Pac. J. Trop. Biomed.* 2(3): 240-6.
- Batool, F., Sabir, S. M., Rocha, J. B. T., Shah, A. H., Saify, Z. S., Ahmed, S. D. 2010. Evaluation of antioxidant and free radical scavenging activities of fruit extract from *Zanthoxylum alatum*: commonly used spices in Pakistan. *Pak. J. Bot.* 42(6): 4299-311.
- Bayan, Al-Dabbagh., Ismail, A., Elhaty, Mohamed Elhaw., Chandraprabha, Murali. 2019. Antioxidant and anticancer activities of chamomile (*Matricaria recutita*). *BMC. Research. Notes.*12:3.
- Benherlal, P. S., Arumughan, C. 2007. Chemical composition and in vitro antioxidant studies on *Syzygium cumini* fruit. *J. Sci. Food Agri.* 87: 2560-69.
- Boekelheide, K., Fleming, S.L., Johnson, J. K., Schoenfeld, H. A. 2000. Role of Sertoli cells in injury-associated testicular germ cell apoptosis. *Proc. Soc. Exp. Biol. Med.* 225: 105-15.
- Chitra, M., Nithyanandhi, K. 2007. Radical scavenging activity of *Trianthema triquetra* in male albino rats intoxicated with CCl₄. *J. Environ. Biol.* 28(2): 283-85.
- Chuanguang, Q., Li, Y., Niu, W., Ding, Y., Shang, X. 2010. Analysis and characterisation of anthocyanins in Mulberry Fruit. *Czech J. Food Sci.* 28(2): 117-26.
- Coss, Bauler, C., Matt., Narayanan. 2012. Alanine Aminotransferase regulation by androgens in non-hepatic tissues. *Pharma. Res.* 29(4): 1046.
- Damek-Poprawa, M., Sawicka-Kapusta, K. 2003. Damage to the liver, kidney, and testis with reference to burden of heavy metals in yellow-necked mice from areas around steelworks and zinc smelters in Poland. *Toxicol.* 186(1-2): 1-10.
- Das, S., Sarma, G. 2009. Study of the hepatoprotective activity of the ethanolic extract of the pulp of *Eugenia jambolana* (Jamun) in albino rats. *J. Clin. Diagnostic Res.* 3: 1466 – 1474.
- Demirdag, K., Bakcecioglu, I. H., Ozercan, I. H. 2004. Role of L-carnitine in the prevention of acute liver damage induced by carbon tetrachloride in rats. *J. Gast. Hepatol.* 19. 333-38.
- El-Sayed, A. M., Ezzat, S. M., Salama, M., M. Sleem, A. A. 2011. Hepatoprotective and cytotoxic activities of *Delonix regia* flower extracts. *Pharmacol. J.* 3(19): 49-56.

- Fabricia, D. S. P., Aparecida, M., Diamante, S., Dolder, H. 2010. Testis response to low dose of Cadmium in rat. *Int. J. Exp. Pathol.* 91(2): 125-31.
- Firman, R. C., Cheam, L. Y., Simmons, L. W. 2011. Sperm competition does not influence sperm hook morphology in selection lines of house mice. *J. Evol. Biol.* 24(4): 856-62.
- Geetha, S., Ram, M.S., Mongia, S.S., Singh, V., Ilavazhagan, G., Sawhney, R.C. 2003 Evaluation of antioxidant activity of leaf extract of Seabuckthorn on Cr (VI) induced oxidative stress in albino rats. *Ethnopharmacol.* 87(2-3):247-51.
- Giagulli, V. A., Vermeulen, A. 1988. Leydig cell function in infertile men with idiopathic oligospermic infertility. *J. Clin. Endocrinol. Metab.* 66: 62-65.
- Ghazanfarpour, M., Sadeghi, R., Roudsari, R. L., Khorsand, I., Khadivzadeh, T., Muoio, B. 2016. "Red clover for treatment of hot flashes and menopausal symptoms: A systematic review and meta-analysis". *J Obstet Gynaecol.* 36 (3): 301–11.
- Glinska, S., Gabara, B. 2011 The effects of the anthocyanin-rich extract from red cabbage leaves on *Allium cepa* L. root tip cell ultrastructure. *Ecotoxicol. Environ. Saf.* 74(1): 93-8.
- Goyal, P. K., Verma, P., Sharma, P. 2010. Evaluation of anti-cancer and anti-oxidative potential of *Syzygium cumini* against BaP induced gastric carcinogenesis. *Asian Pac. J. Cancer Prev.* 11: 753-8.
- Guo, Y., Zhi, F., Chen, P., Zhao, K., Xiang, H., Mao, Q., Wang, X., Zhang, X. 2017. "Green tea and the risk of prostate cancer: A systematic review and meta-analysis". *Medicine.* 96(13): 6426.
- Hamdy, S. M. 2012. Effect of Morus on enzymatic activities in rat. *J. App. Sci. Res.* 8(1): 10-16.
- Heroor, S., Beknal, A. K., Mahurkar, N. 2013. Immunomodulatory activity of methanolic extracts of fruits and bark of Ficus in mice and on human neutrophils. *Ind. J. Pharm.* 45(2):130-5.
- Hussain, S., Jamil, M., Farhat Ullah., Khan, A., Arfan, M. 2010. Antimicrobial and antioxidant activities of the plant *Heliotropium strigosum*. *Afr. J. Biotech.* 9(45): 7738-43.
- Hussain, T., Gupta, R. K., Sweety, K., Eswaran, B. 2012. Nephroprotective activity of *Solanum xanthocarpum* fruit extract against gentamicin-induced nephrotoxicity and renal dysfunction in experimental rodents. *Asian. Pac. J. Trop. Med.* 5(9): 686-91.
- Jagetia, G. C., Baliga, M. S. 2003. Evaluation of the radioprotective effect of the leaf extract of *Syzygium cumini* in mice exposed to a lethal dose of gamma-irradiation. *Die. Nahrung.* 47: 181-5.
- Jagetia, G. C., Shetty, P. C., Vidyasagar, M. S. 2008. Treatment of mice with leaf extract of Jamun protects against the radiation-induced damage in the intestinal mucosa of mice exposed to different doses of γ -radiation. *Pharmacologyonline.* 1: 169-95.
- Jayabarath, J., Shyam, S. S., Arulmurugan, R. 2009. Bioremediation of heavy metals using biosurfactants. *Int. J. Biotech. App.* 1(2):50-4.
- Jieyu, Zuo., Hongming, He., Zhengyun, Zuo., Nádia, Bou-Chacra., Raimar, Löbenberg. 2017. Erding Formula in hyperuricaemia treatment: unfolding traditional Chinese herbal compatibility using modern pharmaceutical approaches. *J. Pharmacy and pharmacology.* 10-24.
- Jude, C. I., Catherine, C. I. 2011. Hepatoprotective effect of an aqueous extract of the rhizomes of *Sansevieria senegambica* baker against CCl₄ induced liver injury. *Asian J. Res. Chem.* 4(12): 1854-60.
- Kaiser, J. P., Lipscomb, J. C., Wesselkamper, S. C. 2013. Putative mechanisms of environmental chemical-induced steatosis. *Int. J. Toxicol.* 32: 3.
- Kaneria, M., Baravalia, Y., Chanda, S. 2009. Determination of antibacterial and antioxidant potential of some medicinal plants from Saurashtra Region. *Ind. J. Pharm. Sci.* 71: 406-12.
- Keren, I., Yanxia, W. U., Inocencio, J., Lawrence, R. 2013. Killing by bactericidal antibiotics does not depend on reactive oxygen species. *Science.* 339: 1213-16.
- Khawja, R., M. Z., Hafiz M., Kausar R., Muhammad A., Tahir A. 2011. Effects of Diazinon on the ovarian micro-anatomical and micrometric parameters of pregnant mice. *Affarican J. Biotec.* 10 (65):14656-62.
- Ki-Tae, H. A., Yoon, S., Choi, D. Kim, D., Kim. 2005. Protective effect of *Lycium chinense* fruit on carbon tetrachloride-induced hepatotoxicity. *J. Ethnopharmacol.* 96(3): 529-35.
- Koeth, R. A., Wang, Z., Levison, B. S., Buffa, J. A., Elin, O. R. G. 2013. Intestinal microbiota metabolism of L-carnitine, a nutrient in red meat, promotes atherosclerosis. *Nature Med.* 19: 576-85.
- Lim, S. R., Go, E., Go, G., Shin, H., Sung, J. 2013. Antioxidative mechanisms of sea buckthorn fruit extract in mouse embryonic fibroblast cells. *Food. Sci. Biotech.* 22(1): 97-204.
- Mccarty, M. F. 2004. An elevation of triglycerides reflecting decreased triglyceride clearance may not be pathogenic relevance to high-carbohydrate diets. *Med. Hyp.* 63(6):1065-73.
- Milbury P.E., Vita J.A., Blumberg J. B. 2010. Anthocyanins are bioavailable in humans following an acute dose of cranberry juice. *J. Nutr.* 140: 1099-104.

- Mittal, M., Flora, S. J. S. 2007. Vitamin E supplementation protects oxidative stress during arsenic and fluoride antagonism in male mice. *Drug. Chem. Toxicol.* 30: 263-81.
- Molinero, O., Marquez. 2009. Use of nutritional supplements in sports. *Nutr Hosp.* 24: 128-34.
- Muthukumaravel, K., Rajaraman, P. 2013. A study on the toxicity of chromium on the histology of gill and liver of freshwater fish *Labeo rohita*. *J. Pure Appl. Zool.* 1(2): 122-126.
- Narasimhacharya, V. R., Amaravadi, L., Vasant, R. A. 2011. Amelioration Of fluoride induced oxidative stress by *Mangifera indica* L. fruit. *Spatula. D. D.* 1(4): 181-88.
- Noura, S., Dosoky., William, N., Setzer. 2018. Chemical Composition and Biological Activities of Essential Oils of *Curcuma* Species. *Nutrients.* 10(9): 1196.
- Okon, J., Esenowo, G., Etim, G., Umoh, N. 2013. Phytochemical screening and haemopoetic study of the Extract of *Baphia nitida* on albino rats. *Int. J. Mod. Bio. Med.* 3(2): 60-8.
- Ozsahin, A. D., Gokce, Z., Yilmaz, O., Kirecci, O. A. 2012. The fruit extract of three strawberry cultivars prevents lipid peroxidation and protects the unsaturated fatty acids in the Fenton reagent environment. *Int. J. Food Sci. Nutr.* 63(3): 353-57.
- Palanivel, M. G., Raj Kapoor, B., Kumar, R. S., Einstein, J. W. 2008. Hepatoprotective and antioxidant effect of *Pisonia* against CCL₄- induced hepatic damage in rats. *Sci. Pharm.* 76: 203-15.
- Penna-Videau, S., Bustos-Obregon, E., Cermenon-Vivas, J. R., Chirino, D. 2012. Malathion affects spermatogenic proliferation in mouse. *Int. J. Morphol.* 30(4): 1399-407.
- Pereira, B. C., Momentti, A. C., Barbosa, P. F., Fatima, D. F. 2013. Influence of treatment with quercetin on lipid parameters and oxidative stress of pregnant diabetic rats. *Can J. Phy. Pharmacol.* 91(2): 171-77.
- Qasemzadeh, M. J., Sharifi, H., Hamedanian, and M. 2015. "The Effect of *Viola odorata* Flower Syrup on the Cough of Children with Asthma: A Double-Blind, Randomized Controlled Trial". *Journal of Evidence Based Complementary Alternative Medicine.* 20 (4): 287-91.
- Rahmani, R., Mahmoodi, M., Karimi, M., Hoseini, F., Heydari, R. 2013. The Effect of *Capparis spinosa* fruit hydroalcoholic extract on blood sugar and lipids in diabetic and normal rats. *Zahedan J. Res. Med. Sci.* 15(10):10.
- Ramanathan, K., Anusuyadevi, M., Shila, S. 2005. Ascorbic acid and tocopherol as potent modulators of apoptosis on arsenic induced toxicity in rats. *Toxicol. Lett.* 156: 297-306.
- Rendon-Ramirez, A., Carbon-Solorzano, J., Maldonado-Vega, M. 2007. Vitamin-E reduces the oxidative damage on δ -aminolevulinic dehydratase induced by lead intoxication in rat erythrocytes. *Toxicol. In Vitro.* 21: 1121-26.
- Rout, S., Banerjee, R. 2007. Free radical scavenging, anti-glycation and tyrosinase inhibition properties of a polysaccharide fraction isolated from *Punica granatum*. *Biores. Technol.* 98(16): 3159-63.
- Sharma, S., Vyas, V., Tamot, S., Manhor, S. 2013. Histological changes in the testis of air-breathing fish, *Heteropneustes fossilis* (Bloch) following Cd-chloride exposure. *JCBPS.* 3(2): 1216-21.
- Singh, P., Deora, K., Sankhla, V., Mogra, P. 2012. Curcumin rendered protection against cadmium chloride induced testicular damage in Swiss Albino mice. *J. Cell Mol. Bio.* 10(2): 31-38.
- Stohs, J. S., Bagchi, D., Hassoun, E., Bagchi, M. 2001. Oxidative mechanism in the toxicity of chromium and cadmium ions. *J. Environ. Pathol. Toxicol. Oncol.* 20(2):77-88.
- Swami, S. B., Singh J. N., Thakor, Patil, M. 2012. *Jamun (Syzygium cumini): A Review of Its Food and Medicinal Uses.* *Food Nut. Sci.* 3: 1100-17.
- Thompson, J., Bannigan, J. 2008. Cadmium: Toxic effects on the reproductive system and the embryo. *Reprod. Toxicol.* 25(3): 304-15.
- Van, Schandevyl S., Kerre, T. 2018. Chimeric antigen receptor T-cell therapy: design improvements and therapeutic strategies in cancer treatment. *Acta Clin Belg.* 13: 1-7.
- Veigas, J. M., Narayan, M. S., Laxman, P. M., Neel, W. B. 2007. Chemical nature, stability and bioef ficacies of anthocyanins from fruit peel of *Syzygium cumini* Skeels. *Food Chem.* 105: 619-27.
- Veigas, J. M., Shrivasthava, R., Neelwarne, B. 2008. Efficient amelioration of carbon tetrachloride induced toxicity in isolated rat hepatocytes by *Syzygium cumini* Skeels extract. *Toxicol. In Vitro.* 22: 1440-46.
- Vijaya, B. R., Sasikala, P., Karthik, A., Shivakumar, K. 2013. Sodium selenite induced oxidative stress and histological alterations in testis of albino mice. *Int. J. Advanced Sci. Tech. Res.* 3: 2.
- Volpato, G.T., Calderon, I.M.P., Sinzato, S., Campos, K. E. 2011. Effect of *Morus nigra* aqueous extract treatment on the maternal-fetal outcome, oxidative stress status and lipid profile of streptozotocin-induced diabetic rats. *J. Ethnopharmacol.* 138: 691-6.

- Wen, L., Wu, D., Jiang, Y., Prasad, K. N., Lin, S., Jiang, G., He, J., Zhao, M., Luo, W., Yang, B. 2014. "Identification of flavonoids in litchi (*Litchi chinensis*) Leaf and evaluation of anticancer activities". *Journal of Functional Foods*. 6: 555-63.
- Won, H. N., Kyoo, L. Koh., Hae, S. A. 2012. Effect of *Spirulina maxima* on spermatogenesis and steroidogenesis in streptozotocin-induced type I diabetic male rats. *Food Chem.* 134(1):173-9.
- Xiao-Feng, J., Qian, J., Lu, Y. H. 2011. The role of hepatoprotective effect of a flavonoid-rich extract of *Salvia plebeia* R.Br. on CCl₄ induced acute hepatic injury in mice. *J. Med. Plants Res.* 5(9): 1558-63.
- Zhang, H., Liu, Y., Wang, L., Li, Z., Zhang, H. 2013. Differential effects of estrogen/androgen on the prevention of nonalcoholic fatty liver disease in the male rat. *J. Lipid Res.* 54: 345-57.

UNDER PEER REVIEW