

Short communication

Short estrous cycle following ovulation in peri-pubertal Sahiwal and Jersey Crossbred heifers

ABSTRACT

This investigation focuses on analysing the follicular dynamics exhibited during peri-pubertal period in Sahiwal and Jersey crossbred heifers. The aim of the study was to assess first ovulation in the heifers following puberty (N=20; 10 each breed). Heifers were subjected to trans-rectal ultrasonography (TRUS) when the diameter of dominant follicle surpassed 9 mm diameter. Alternate day TRUS was done to monitor and evaluate their initial ovulation. The size of the first pre-ovulatory follicle in Sahiwal and Jersey Crossbred heifer in peri-pubertal stage was 10.52 ± 0.13 and 10.15 ± 0.51 mm, respectively and the corpus luteum attained its maximum size of 13.89 and 11.26 mm, was significantly different ($p < 0.01$) at day 8.6 ± 0.4 and 8.2 ± 0.48 in Sahiwal and Jersey crossbred heifers, respectively. The regression of corpus luteum adjudged by the Colour Doppler initiated on 10.6 ± 0.4 and 11.0 ± 0.63 day for Sahiwal and Jersey crossbred heifers, respectively. Some other follicular dynamics parameters i.e. day of wave onset, number of follicles recruited, inter-wave duration along with maximum diameter of dominant follicle, day of maximum diameter, growth rate, length of growth and static phase, duration of static phase and onset of atresia was recorded, however, no significant difference ($p > 0.05$) was recorded between breeds. On an interesting note, the next estrous cycle for heifers did not lead to ovulation despite having follicular size having more than 10 mm in both the breeds.

Conclusion: In peroration, ovulation in peri-pubertal phase with precocious luteal regression not always lead to subsequent ovulation in the next estrous cycle in Sahiwal and Jersey crossbred heifers.

Keywords: Corpus luteum; Follicular dynamics; Jersey crossbred; Peri-pubertal period; Sahiwal; Short estrous cycle

1. INTRODUCTION

Puberty is the gradual process of attaining reproductive and productive competence [1]. It is defined as the age when sexual organs are functionally developed and further characterized by the ovulation, plasma progesterone above 1ng/mL and period of normal luteal phase [2]. The secretion of gonadotropin releasing hormone (GnRH) is highly sensitive to estradiol negative feedback during the pre-pubertal period whereas just before the commencement of puberty (50-60 days) the peri-pubertal period is accompanied by decrease in negative feedback to GnRH and increase in frequency and amplitude of luteinizing hormone (LH) [3]. Follicular growth begins with follicular recruitment, which is characterized as a wave of small follicles with a diameter of 3-4 mm entering a developing pool [4]. Growth of the follicles during pre-and post-puberty occurs in a wave like manner with absence of luteal tissue in the earlier [5]. The effective reproductive management of cattle requires a fundamental understanding of the estrous cycle since the percentage of cows becoming pregnant during a breeding season strongly affects overall profitability [6].

Keeping in view these aspects, the present study was focused on understanding the follicular dynamics following first ovulation in Sahiwal and Jersey crossbred heifers during peri-pubertal period.

2. MATERIAL AND METHODS

The research was carried out in the Livestock Farm Complex, CSK Himachal Pradesh Krishi Vishwavidyalaya, Palampur during a period of June 2021 to April 2022, after the approval of the Institutional Animal Ethics Committee (IAEC). Pre-pubertal clinically healthy Sahiwal and Jersey crossbred heifers (N=20; 10 in each group; aged 12-18 months) were enrolled in the study. When the heifers attained almost 60% of the adult weight (calculated as described by [7]) the ovarian structures were scanned to evaluate the antral follicles above 9 mm diameter and the absence of luteal tissue using a portable ultrasound machine (Mindray Z5; VETMODEL 75L50EAV) fitted with a linear rectal transducer of 7.5 MHz frequency [8].

Trans-rectal ultrasonography (TRUS) was carried out every 48 hours to assess the first ovulation in heifers along with different parameters of follicular dynamics viz. day of wave onset, number of follicles recruited, inter-wave duration along with maximum diameter of dominant follicle, day of maximum diameter, growth rate, length of growth and static phase, duration of static phase and onset of atresia. Data on follicle was obtained by drawing a conventional ovarian sketch [9].

3. RESULTS AND DISCUSSION

On perusal of Table 1, the size of the first pre-ovulatory follicle of Sahiwal and Jersey crossbred heifers was 10.52 ± 0.13 and 10.15 ± 0.51 mm. The maximum diameter of the corpus luteum was significantly different ($p < 0.01$) for both the breeds i.e., 13.89 ± 0.69 and 11.26 ± 0.45 mm, on day 8.6 ± 0.4 and 8.2 ± 0.48 ($p > 0.05$) after ovulation.

Table 1: Luteal parameters in Sahiwal and Jersey crossbred heifers (N=20) following first ovulation(Mean±S.E.)

PARAMETERS	SAHIWAL	JERSEY CROSSBRED
Pre-ovulatory follicle (mm)	10.52±0.13	10.15±0.51
Maximum diameter of CL (mm)	13.89±0.69 ^a	11.26±0.45 ^b
Day of maximum diameter of CL	8.6±0.4	8.2±0.48
Day of onset of regression of CL	10.6±0.4	11±0.63

^{a,b}Values with different superscripts within the row are significantly different (p<0.01)

The follicular dynamics parameters i.e., the day of onset of first wave was 0.6±0.24 and 0.4±0.24 and the day of maximum diameter of dominant follicle did not vary significantly (p>0.05) for Sahiwal and Jersey crossbred heifers. Other follicle parameters such as growth rate, duration of dominance, length of growth phase and inter-wave duration did not vary significantly (p>0.05) between both the breeds (Table 2).

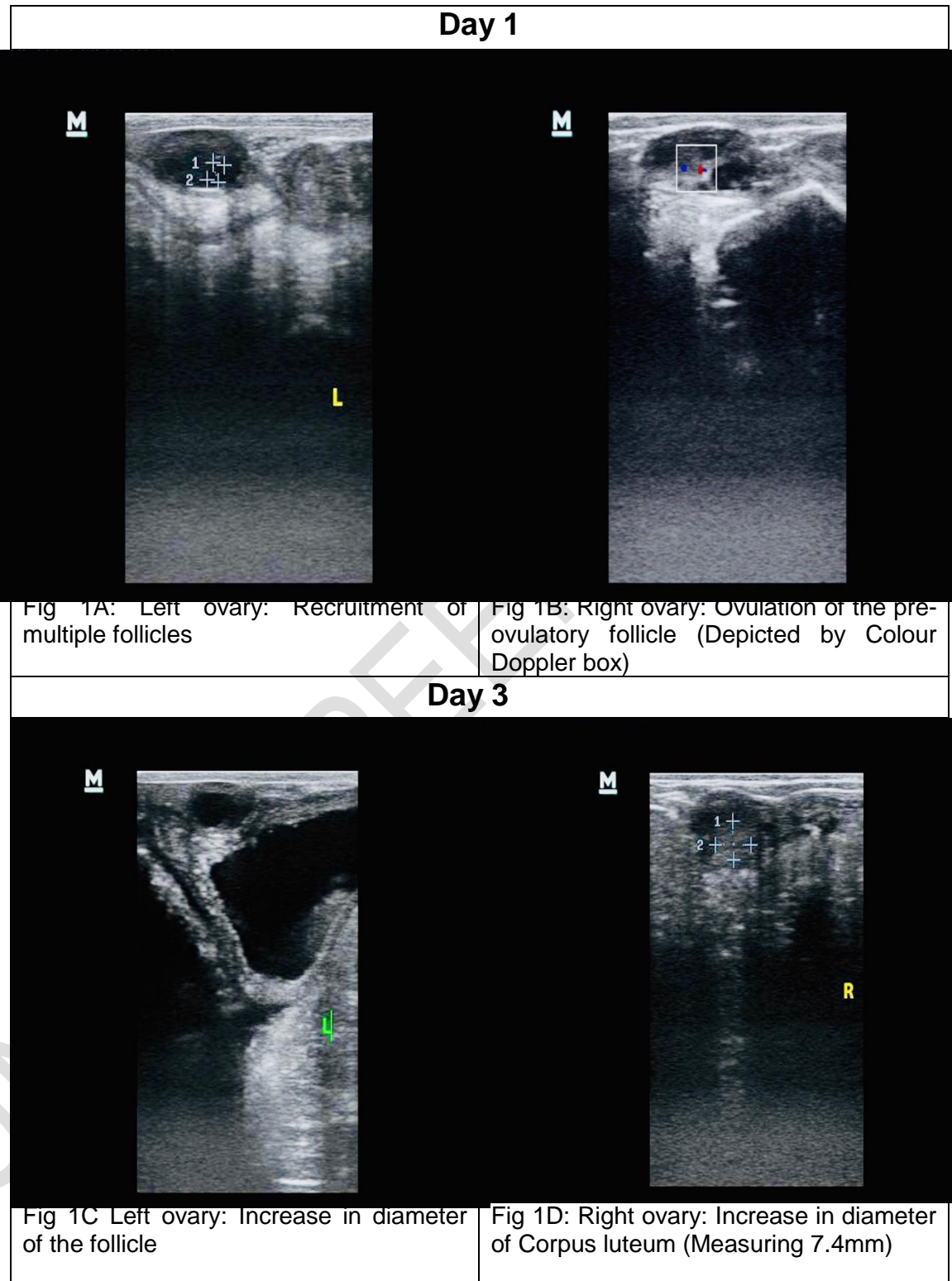
Table 2: Follicular parameters in Sahiwal and Jersey crossbred heifers (N=20) at first ovulation(Mean±S.E.)

PARAMETERS	SAHIWAL	JERSEY CROSSBRED
Day of wave onset	0.6±0.24	0.4±0.24
Number of follicles recruited	8.4±0.74	6.6±0.87
Interwave duration	11.4±0.74	10.6±0.74
DOMINANT FOLLICLE		
Maximum diameter (mm)	10.39±0.38	10.63±0.38
Day of maximum diameter	9.0±0.63	9.8±0.48
Growth rate (mm/day)	1.16±1.16	1.19±0.07
Duration of dominance	11.0±0.63	10.6±0.74
Length of growth phase	8.6±0.4	9.0±0.89
Duration of static phase	2.4±0.4	1.6±0.4
Onset of atresia (day)	11.4±0.74	11.0±0.89

Dominant follicle entered the static phase of 2.4±0.4 and 1.6±0.4 day for Sahiwal and Jersey crossbred heifer and no subsequent ovulation took place. Although the onset of regression of the first corpus luteum in first ovulation was similar in Sahiwal and Jersey crossbred heifers occurred at day 10.6±0.4 and 11.0±0.63, with precocious luteolysis of the CL occurred before day 11 of estrous cycle. After the precocious luteolysis, none of the heifers had subsequent ovulation and again successive anovulatory waves of follicles were recorded.

The TRUS of the premature luteolysis and follicular growth pattern is depicted in Figure 1.

Figure 1: Ultrasonographic evaluation of ovarian follicular dynamics during first ovulation in heifers (Peri-pubertal period)



Day 5

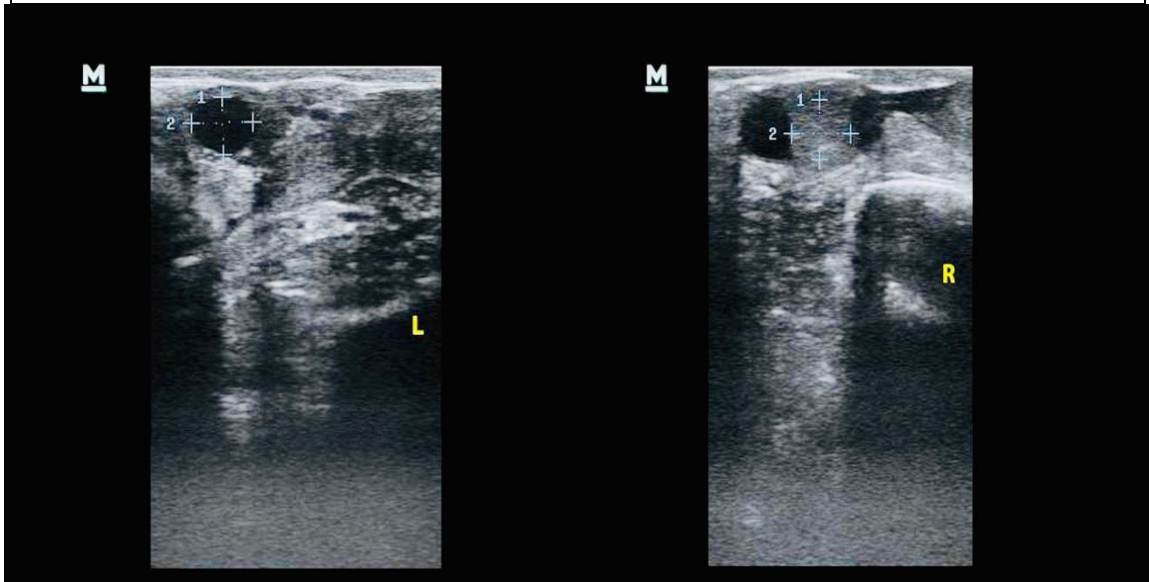


Fig 1E: Left ovary: Increase in diameter of the follicle (Measuring 7.2mm)

Fig 1F: Right ovary: Increase in diameter Corpus luteum (Measuring 9.7 mm)

Day 7

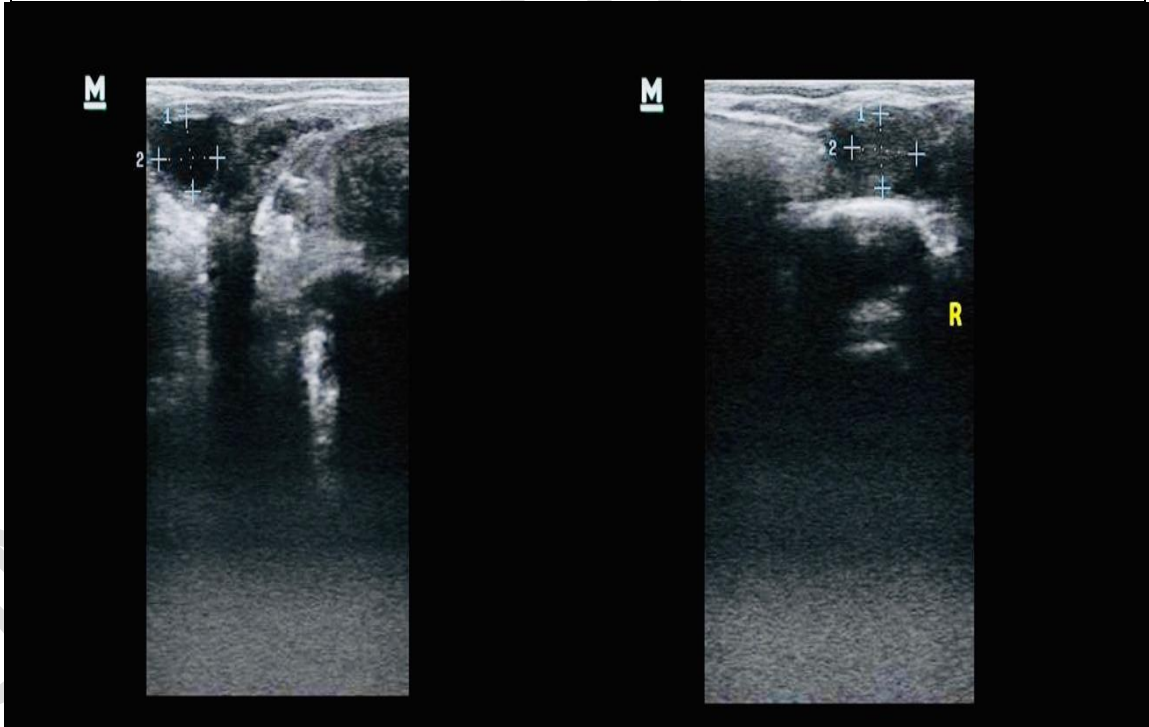


Fig 1G: Left ovary: Increase in diameter of the dominant follicle (Measuring 9.1mm)

Fig 1H: Right ovary: Increase in diameter of Corpus luteum (Measuring 10.3 mm)

Day 9

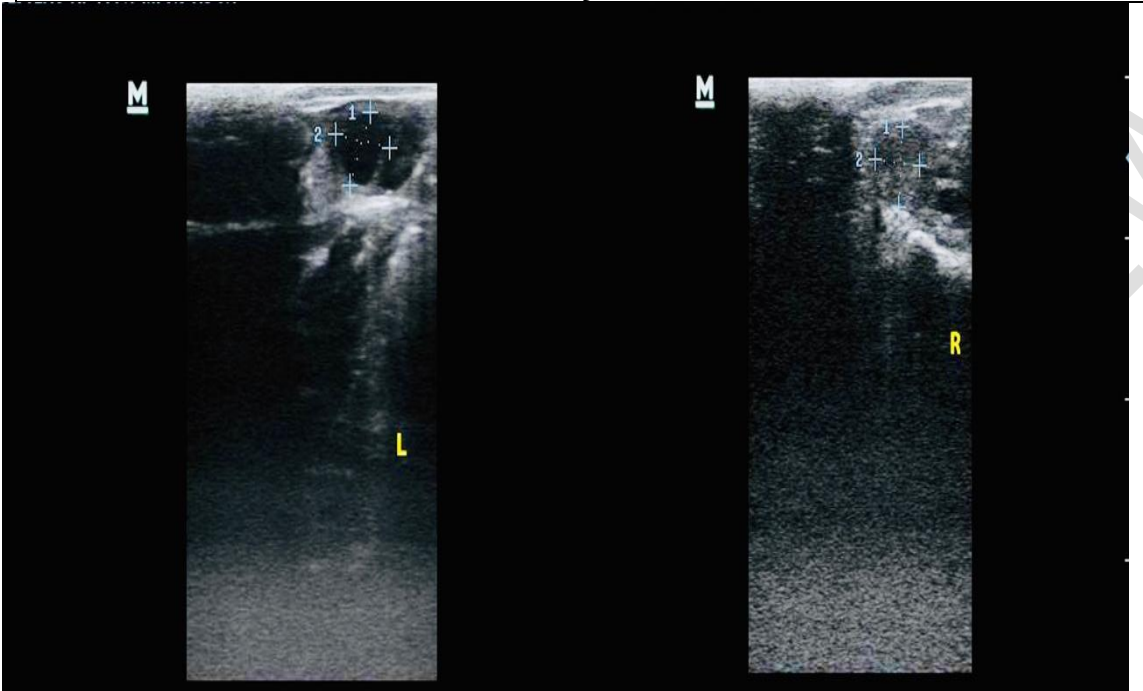


Fig 1I: Left ovary: Constant diameter of the dominant follicle (Measuring 9.4mm)

Fig 1J: Right ovary: Constant diameter of corpus luteum (Measuring 10.5mm)

Day 11

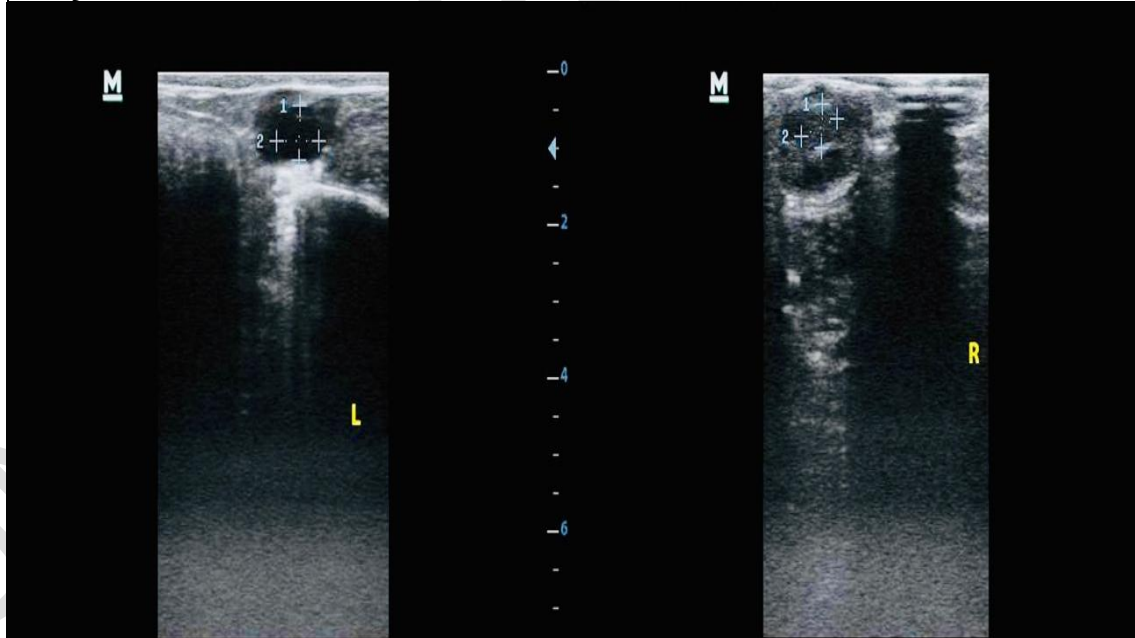


Fig 1K: Left ovary: Atresia of the dominant follicle (Measuring 7.2 mm)

Fig 1L: Right ovary: Decrease in size of the corpus luteum indicative of luteal regression (Measuring 7.8mm)

Day 13

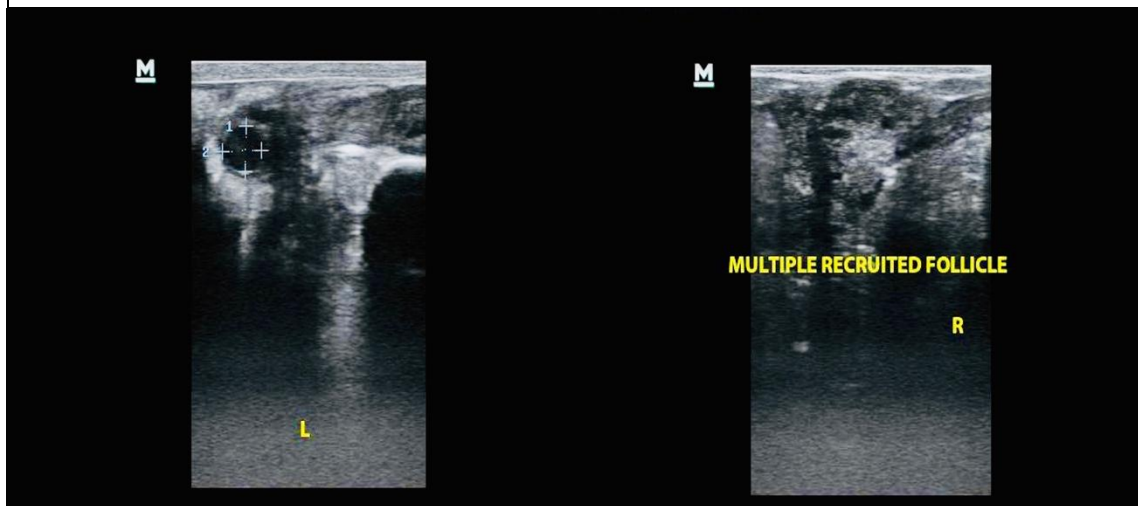


Fig 1M: Left ovary : Atresia of the dominant follicle (Measuring 6.0 mm)

Fig 1N: Right ovary: Recruitment of multiple follicles

Precocious luteolysis is alluded as regression of CL occurring before day 16 in estrous cycle, and more commonly observed in peri-pubertal period and postpartum cows [10] . Since the inter-estrus interval in this instance is shorter than the observed average, it is referred to as a short estrous cycle [11]. Akin to current findings, [12] and [13] reported the initial luteal phase after first ovulation ranged from 7-12 days whereas [14, 11 and 15] reported luteal phase of 5-7, 7.7 and 7 days, respectively.

Increased or premature release of, and increased sensitivity to, a luteolysin from the uterus is a better explanation for early luteal regression i.e., elevated quantities of 15-keto-13, 14 dihydro-prostaglandin F2a (PGFM) [16]. Although, abundant oxytocin receptors have been expressed in peri-pubertal heifers but uncoupled with prostaglandin synthase, thus remain unmasked before exposure of uterine tissue to progesterone [17].

Most of the work on precocious luteal regression has been carried out for the postpartum period whereas no such work has been done in the peri-pubertal heifers, therefore, as a part of discussion for follicular parameters following first ovulation, such observations have not been documented in the literature yet.

4. CONCLUSION

In peroration, upon the first ovulation, heifers undergo a unique physiological response characterized by precocious luteal regression. This phenomenon results in an estrous cycle of notably short duration devoid of subsequent ovulation. The absence of further ovulation following the initial cycle highlights a distinct pattern in the reproductive cycle of heifers, indicating a specific post-ovulatory hormonal shift leading to precocious luteal regression and subsequently limiting the duration of the first estrous cycle.

REFERENCES

- [1] Dayane PV, Eliza P, Taira AR, Aulo HA, Borges L, Barros FFPC, Maria. E.F, Pedro.T. Puberty in heifers and premature luteolysis in the first estrous cycle. *Ani. Repro* 2016; 15(4): 47-53.
- [2] Estill CT. Initiation of Puberty in Heifers. *Bov. Reprod.* 2021:258–268.
- [3] Senger PL. Pathways to pregnancy and parturition. Current Conceptions Inc. 3rd edn:2003.
- [4] Zacarias TA, Sena N, Severine M, Anelise F, Maurico M, Figueirido R. Ovarian follicular dynamics in 2 to 3 months old Nelore calves (*Bos taurus indicus*). *Ani. Repro.* 2015; 12: 305-311.
- [5] Hopper HW, Silcox RW, Byerley DJ, Kiser TE. Follicular development in prepubertal heifers. *Ani. Repro. Sci.* 1993; 31(1-2): 7–12.
- [6] Viana JHM, Ferreira ADM, Ferriera W, Camargo LSDA. Follicular dynamics in zebu cattle. *Pse. Agropec. Bras.*2000; 35(12): 2501-09.
- [7] Wangchuk, Kesang W, Jigme M, Mindu. Comparison and reliability of techniques to estimate live cattle body weight. *J. Appl. Anim. Res.* 2017; 46(4):1-4.
- [8] Sharma A, Singh M. Establishing a relationship between endometrial cytology and uterine fluid, followed by evaluation of their association with fertility parameters in post-partum dairy cows. *Vet. Arhiv.* 2019; 89: 435-446.
- [9] Jaiswal RS, Singh J, Adams GP. Developmental Pattern of Small Antral Follicles in the Bovine Ovary. *Biol. Reprod.* 2004; 71(4): 1244–5.
- [10] SA Filho OG, Vasconcelos JLM. Regressãoprematura do corpólúteoembovinos. *Arq. Bras. Med. Vet. Zootec.* 2008; 15: 220-233.
- [11] SA Filho OG. Effect of treatments with progesterone and/or estradiol on the incidence of premature regression of the corpus luteum after the first ovulation in postpartum Nelore cows. 137f. Botucatu SP. Dissertation (Master's in Veterinary Medicine) – UniversidadeEstadualPaulista. Brazil. 2007.
- [12] Sharma RK, Singh JK, Khanna S, Singh I. Ovarian response of prepubertal Murrah heifers to exogenous GnRH. *Ani. Repro. Sci.* 2012; 133: 3-4.
- [13] Garverick HA, Smith MF. Macheanism associated with subnormal luteal function. *J. Ani. Sci.* 1986; 62(2): 92–105.
- [14] Evans ACO, Rawlings NC. Effects of a long-acting gonadotrophin-releasing hormone agonist (Leuprolide) on ovarian follicular development in prepubertal heifer calves. *Canadian Journal of Animal Science*, 1994; 74(4): 649–656.

- [15] Adams GP, Jaswant S. Ovarian Follicular and Luteal Dynamics in Cattle. Bovine Reproduction. Richard M Hopper. Wiley Blackwell. USA. 2014.
- [16] Guilbault LA, Thatcher WW, Drost M, Hopkins. Source of series prostaglandins during the early post-partum period in cattle. Biol. Reprod. 1984; 31: 879-887.
- [17] Fuchs AR, Drolet P, Fortier MA, Balvers M, Fields MJ. Ontogeny of Oxytocin Receptors and Oxytocin-Induced Stimulation of Prostaglandin Synthesis in Prepubertal Heifers 1. Endocr. 1998; 139(6): 2755-27

UNDER PEER REVIEW