

1  
2 **Effect of socio-economic factors on level of use**  
3 **of improved maize varieties in Bungoma**  
4 **County, Kenya**  
5  
6  
7  
8  
9  
10

---

**ABSTRACT**

**ABSTRACT**

Maize is Kenya's primary staple food, where 75% of producers are smallholder farmers. Maize consumption exceeds production with imports bridging the gap. Improved maize varieties have been adopted by smallholder farmers but the deficit gap still exists. The study's objective was to determine factors influencing the adoption intensity of improved maize varieties in Bungoma County. Primary data was collected from 500 smallholder farmers using a structured questionnaire. Data was analysed using the Statistical Package for Social Sciences Version 27 software and a fractional logit model applied. Factors influencing adoption intensity of improved maize varieties were personal characteristics of the farmer (age, and household size), institutional factors (extension service) and varietal factors (early maturity, pest and disease resistance, drought resistance). Age, household size and extension services reduced the intensity of adoption, while varietal factors increased the intensity of adoption of improved maize varieties. **The recommendations from the study is that even if the extension agents discouraged increased acreage under maize, they need to address and manage risk aversion among the old farmers through providing information and support groups.** Counties should nurture a strong research-inkage with researchers to demonstrate demonstrate technology benefits.

**Keywords: smallholder farmers, intensity of adoption, fractional response model, extension services, varietal attributes**

**1. INTRODUCTION**

Maize is the primary staple food of ordinary Kenyans, and the cheapest source of calories among the cereal grains. In Kenya, 90% of its population depends on maize as a key staple food crop, with 75% of maize producers being small holder farmers located in low to mid altitude ecologies [1]. According to the Agricultural Sector Transformation and Growth Strategy for the year 2019-2029, maize accounts for about 50% of cereals value, and the maize value chain is one of the crop value chains with the highest potential for agricultural transformation [2]. Among crop farmers, 58% of small-scale farming land is allocated to maize production but only 10-15% of incomes for these farmers come from maize [2]. Kenya's per capita maize consumption is the highest in Eastern Africa, standing at 103 kg/year compared to 73 kg/year for Tanzania, 52 kg/ year for Ethiopia and 31 kg/year for Uganda [3]. Currently, maize consumption in Kenya outweighs its production, and the former is bound to increase with the increase in population. According to [4], aggregate maize production decreased from 4.21 million metric tonnes-MT in 2020 to 3.67 million MT in 2021. It is also stated in [4] that the volume of imported maize nearly doubled from about 274,000 MT in 2020 to 487,000 MT in 2021, and the value of imports from Tanzania nearly doubled from Kenya shillings (KES) 27.9 billion in 2020 to KES 54.5 billion in 2021 partly attributable to increase in imports of maize and rice from this country. To bridge this gap, a yield increase of 157% is required [5]. Maize production therefore

needs to be increased to meet demand and avoid overreliance on imports. A study by [6] highlights the perennial maize imports in Kenya and shows that the net effect of maize imports on economic welfare is negative, and asserts that increased domestic production benefits both producers and consumers while facilitating efficient allocation of resources in the maize sub sector.

Improving **the** productivity of maize needs increased efforts in influencing the farmer to use improved maize varieties. In Kenya, maize yield fluctuates from 1.5-1.8 tonnes/hectare against a potential of 4.5 tonnes/hectare [5]. This yield gap highlights the need to increase yield, and one of the ways to do this is through improved technologies such as improved maize varieties. New/improved maize varieties with better genetic gains have been developed and adopted through the years, yet the yield gap exists. The use of genetically impure seeds hinders the realization of maize yield potential, for instance a one percent decrease in varietal purity could lead to a loss of 135kg/ha in maize production [7]. This paper highlights the **socioeconomic** issues around the use of improved maize varieties by farmers in Bungoma County. Agriculture drives the economy of Bungoma County, where almost all households plant improved maize varieties. The county is the fourth largest maize producer after Trans Nzoia, Uasin Gishu and Nakuru counties. Maize is both a food and cash crop for smallholder households in Bungoma County.

Many studies have viewed adoption as a binary process when in reality the adoption process is partial and incremental, meaning that it is the levels of a technology that are adopted, and this levels may be increased over time. Past studies have shown that it is important to go beyond mere adoption studies that estimate factors influencing adoption to estimating factors that determine the level (intensity) of adoption of technologies at the household level. This is because various adoption studies have shown that factors determining adoption and those that determine intensity of adoption of a technology can be different. In their study on modeling the adoption and use intensity of improved maize seeds in Benin West-Africa, [8] identified more factors that influence **the** intensity of adoption than those that influenced **the** adoption of improved maize varieties in Benin. **In their study on the determinants of adoption of improved faba bean cultivars in the central highlands of Ethiopia [9] asserts that the decisions to adopt the improved cultivars and how much land** to be covered (intensity of adoption) appeared to be explained by different processes. The decision to adopt improved faba bean cultivars was influenced by family size, farmers' awareness about the existing improved cultivars, and extension contact but the intensity of adoption was determined by livestock holding and access to market information. A study by [10], also noted differences in factors **affecting** adoption and those influencing intensity of adoption of precision agriculture technologies (PAT). In the study on factors influencing adoption of irrigation technologies among smallholder farmers in Machakos County, Kenya, [11] found that sex of household head, education, farm size, off-farm income, access to credit and access to extension services positively influenced adoption while adoption intensity was positively influenced by gender, off-farm income, farming experience, primary occupation and extension services. These studies show that a binary econometric model, which is used in many adoption studies, is not sufficient to highlight the socioeconomic constraints influencing the intensity of adoption of any given technology. The studies therefore underscore the contribution of intensity of adoption studies to adoption studies, and the need to estimate the determinants for the level of adoption of any given technology.

**In order to identify the appropriate model to use for data analysis, a review of the models used in similar studies is necessary.** The double hurdle Tobit model was used by [8] to identify factors affecting adoption as well as the intensity of adoption of improved maize varieties in Benin. However, the Tobit model is suitable when the depended variable is bounded on one side. In our study, the depended variable, which is the proportion of the

area devoted to maize production with improved maize seeds is continuous but bounded between 0 and 1. According to [12], Tobit models rely on distributional assumptions that are frequently not reflected in survey data. For instance, the observations/responses may be skewed on one side of the scale. An assumption of the Tobit model is that zeros in the dependent variable represent censored values of an underlying normally distributed latent variable [13], which may not be the case when the dependent variable is the proportion of land under a particular crop. The zero in the latter means that a crop was not grown by the respondent. The double hurdle Tobit model was used by [9] to analyse the decision to adopt faba bean cultivars in the first stage and the area of land under bean (intensity of adoption) in the second stage. The Probit and Poisson regression models for the analysis was employed by [10], where the Probit model was used for the decision to adopt (1) or not to adopt (0) while the Poisson regression model was used where the number of technologies adopted was the dependent variable. A study by [14] also used the Poisson regression model and the dependent variable was the number of improved maize technology package elements adopted by farmers. According to [12], the Poisson regression models are appropriate for discrete variables, and where the number of technologies used are many. In their study on **the** intensity of adoption of conservation agriculture by smallholder farmers in Zimbabwe [15] used the Poisson regression model because the model had eight conservation agriculture practices in the dependent variable. The Poisson regression model may not be appropriate in this study because the dependent variable, which is the proportion of land under improved maize varieties is a continuous variable. In a study by [11], the Probit model was used to analyze the factors influencing the decision to adopt irrigation technologies, while the Ordinary Least Squares (OLS) regression was used to analyze the factors influencing the area put under irrigation. According to [12], the OLS is inappropriate to estimate models of bounded dependent variables because the predicted values may be outside the bounded variables. In addition, the partial effects estimated by OLS regressions are constant and independent of the value of the predictor.

The fractional response model (FRM) on the other hand overcomes many limitations of established linear and non-linear econometric solutions in the study of bounded data. Studies that have estimated the intensity of adoption by use of the FRM include [16], [17] and [18]. The fractional logit model was used to analyze the intensity of adoption of integrated pest management practices in Rwanda in [16]. The dependent variable was acres of maize under PPT divided by the total acreage under maize per farm. The FRM was used by [17] to estimate the determinants for the intensity of adoption of conservation practices, which was defined as the proportion of land cultivated with conservation practices. In their study on adoption of improved maize varieties among farm households in the northern region of Ghana, [18] used the FRM to estimate the factors influencing the intensity of adoption of improved maize varieties, and the dependent variable was the proportion of the total farmland allocated to the cultivation of improved maize varieties.

This study contributes to the growing body of literature on intensity of adoption by use of the FRM. It uses the FRM to examine socioeconomic factors influencing the intensity of adoption of improved maize varieties in Bungoma County. **The study is in line with Vision 2030 and more recently, the Agricultural Sector Transformation and Growth Strategy 2019-2029 that strive to attain 100% food security for all Kenyans by 2030. These two documents emphasize the need to increase land productivity for smallholder farmers for the country to attain food security in 2030. High maize productivity translates to increased maize supply which results into lower consumer prices. More maize translates to higher revenue for producers hence reduced poverty levels and reduced malnutrition. The low consumer prices due to increased maize supply leads to a reduced share required to purchase food hence increasing consumer welfare.** The factors determining the intensity of adoption from this study will act as a guide to researchers, producers and other stakeholders in the maize value

chain in their quest to increase food security in Kenya.

## 2. METHODOLOGY

### 2.1 Study area

Figure 1 shows the map of Bungoma County. The selected sub-counties; Webuye, Kabuchai, Mt. Elgon, Sirisia and Tongaren were the main maize growing areas in the county. The annual rainfall in Bungoma County ranges from 400 -1800 mm, while the annual temperatures vary between 14.8°C and 27 °C, and the main agro ecological zones are upper highlands (UH), lower highlands (LH), upper midlands (UM) and lower midlands (LM). The different agro-ecological zones give room for growing different maize varieties ranging from hybrid maize, OPVs and local varieties.

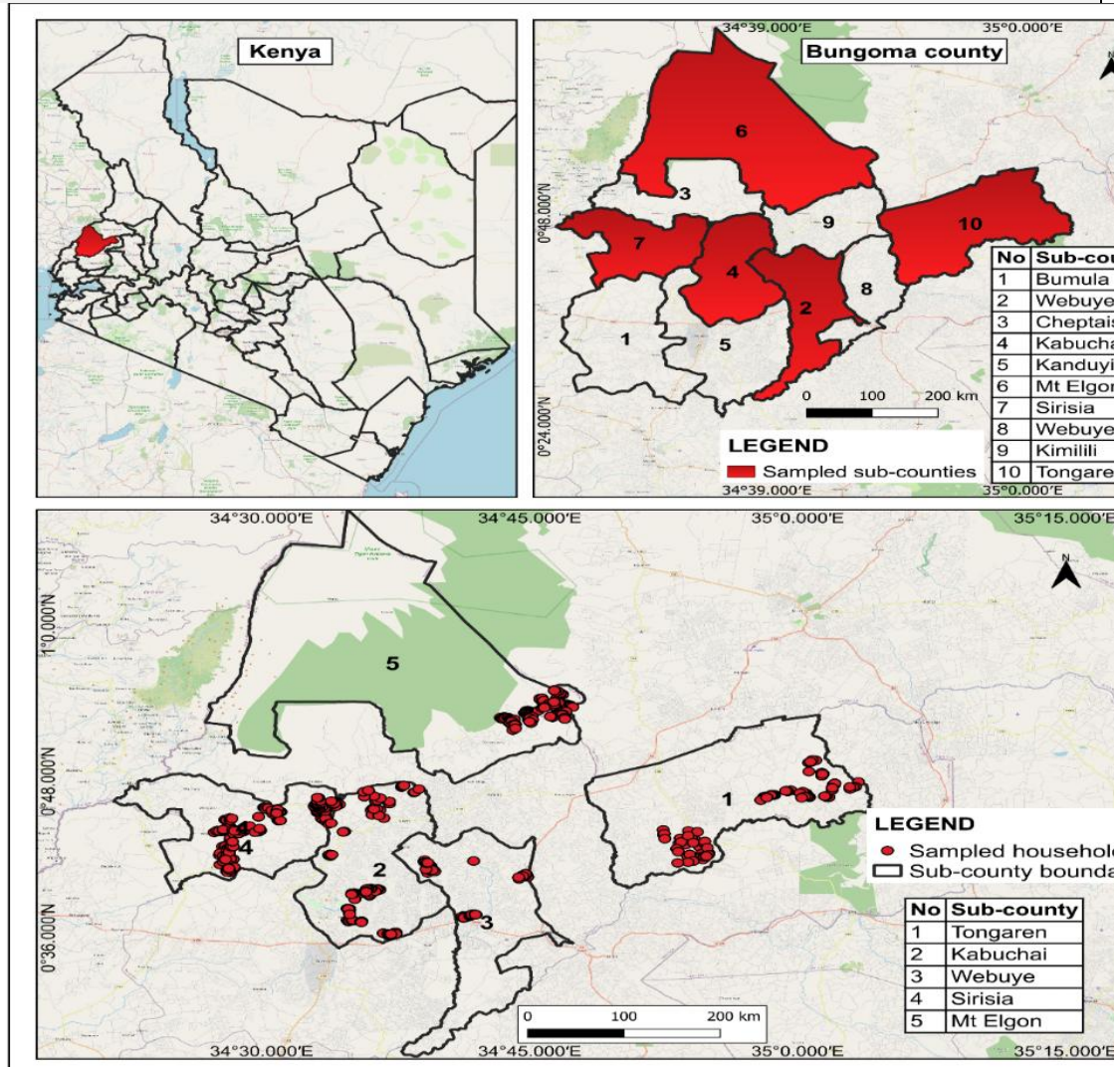


Figure 1: Map of Bungoma County showing the study sites

### Sample size and sampling

The household survey used the national statistical sample frame developed by the Kenya National Bureau of Statistics (KNBS). A total of 500 households were randomly selected, a sample size that was determined using the formula [19].

$$N=N/(1+N(e))$$

$$n = \frac{N}{1 + N(e)^2}$$

Where n is the sample size, N is the population size, e is the level of precision (taken as 10%)

The calculated minimum sample size in each selected sub-county was therefore 100, making a total of 500.

Pretesting of the questionnaire was conducted in Kanduyi sub-County. Farmers were selected using a systematic sampling approach, where a main land mark such as a road, church or school was the starting point of the transect that enumerators used to walk along, and select every 5<sup>th</sup> farmer for interview on the alternative side of the road or path. A structured questionnaire mounted on the open data kit (ODK) was administered to the 500 households by trained enumerators through face to face interviews. Data was collected in January-February 2022.

## 2.2 Theoretical framework

Two theories, the random utility theory (RUT) and expected utility theory (EUT) guide the discrete choice models used to model the process of decision making to adopt and utilize a technology. Both theories assume that given a set of alternatives, a farmer will always make a choice on the alternative that yields the maximum utility ([20]. The EUT is used when the preferences are stated and the choices are made in the presence of uncertainties and there is an expected outcome [21]. The farmers are assumed to weigh the expected benefits and costs from adoption of the technology against the benefits and costs of **not adopting it**. The farmer adopts a technology if the expected utility from adoption decision ( $U\acute{a}$ ) is higher than that derived when one does not adopt ( $U\eta$ ) [22]. The RUT is applicable when preferences of the outcome are revealed and outcome decisions are made in an environment with no uncertainties. The utility is derived from the underlying characteristics or attributes of a given technology or good [23]. Therefore, a good is described by its attributes that yield satisfaction to the small holder farmer if adopted. Adoption and use of a technology is taken as an outcome of optimization by heterogenous farmers which takes place in the presence of availability of the technology, budget constraints and information asymmetry [24]. The RUT was employed in the study to examine the determinants of the level (intensity) of adopting improved maize varieties.

The RUT considers adopter households as agents who make rational decisions to maximize utility in the presence of budget constraints, information asymmetry and technology availability [25]. According to [26], random utility suggests that a utility maximizing maize farmer will add a proportion of land under improved maize variety if the total benefits are greater than zero. According to [27], the random utility function for a maize smallholder farmer facing a decision to increase a proportion of land under improved maize varieties was specified as;

$$P_{im} = \bar{P}_{im} + \varepsilon_{im} = X_{im}\theta + \varepsilon_{im}, i = 1, \dots, n$$

Where,  $P_{im}$  is the utility of alternative  $m$  for farmer  $i$ , and is a function of deterministic component  $\bar{P}_{im}$  and the random component  $\varepsilon_{im}$ ,  $X$  is the demographic characteristics (such as age, gender, land size, extension, credit access) and the technology specific attributes (such as high yielding, early maturity, pest and diseases resistance and drought resistance) and a disturbance term assumed to be normally distributed with zero mean and constant

variance, while  $\varepsilon_{im}$  is the stochastic element of the utility function which represent the unobserved attributes affecting farmer  $i$  choice on land allocation and measurement errors. Therefore, a rational farmer would increase land under improved maize production if the expected utility is driven from an additional proportion of land  $P_{i1}$  was higher than the one generated on normal land allocation  $P_{i0}$  in the presence of production constraints.

### 2.3. Empirical framework

#### 2.4.

To analyze the intensity of technology adoption, several empirical models have been used, which include Truncated regression, Tobit regression and censored, Poisson, Fractional response and Double hurdle models. The Truncated regression, Tobit regression and censored models are normally used to estimate continuous dependent variables that are restricted or bounded ([16], [28]). In this study, the dependent variable is the intensity of adoption, which is defined as the total land under improved varieties divided by the total land allocated to production which is a fraction or proportion. Hence, Tobit, truncated and censored models will give biased estimates since they are constrained. Therefore, to account for this limitation the study used the Fractional Response Model (FRM) since FRM affirms more specific interpretations especially where observations at the end of the distribution are of importance for analysis. The FRM accounts for nonlinearity, and relaxes the numerous restricting assumptions that are necessary in traditional econometric models. The FRM extends the general linear models (GLM) to a class of functional forms that overcome the limitations of the outdated econometric models for variables that are bounded in nature [29].

The study applied fractional logit model which assumes a logistic distribution of random disturbances and binds the estimated intensity of adoption of improved maize varieties between zero and one [28]. The intensity of adoption was defined as the proportion of land under improved maize varieties per household divided by the total number of acres per household, which is bounded between zero and one. The general model of intensity of adoption is specified following the functional form for the expected intensity of adoption of improved maize varieties  $Y_i$  of the  $i$ th farmer conditioned by  $X_i$  explanatory variables [28] as;  
 $E(Y|X_i) = \mu(\beta X_i)$

Where  $Y_i$  represents the adoption intensity of improved maize varieties,  $X_i$  is a vector of farmer characteristics and technology-specific attributes and  $\beta$  a vector of unknown parameters to be estimated. The cumulative distribution function that follows a logistic distribution function is defined by  $\mu(\cdot)$  which represents a nonlinear link function satisfying  $0 \leq \mu(\cdot) \leq 1$  to ensure that the value approximated lie in the interval of 0 and 1 and E is the expectations operator.

The variables included in the model are specified in Table 1. The dependent variable was the intensity of adoption, which was specified as a fraction of the total land the farmer had under improved maize. The independent variables include household characteristics, institutional attributes and varietal attributes. Some of the independent variables were dropped due to multicollinearity.

Table 1: Description of explanatory variables used in the Fractional Response Model

Variable Name	Variable description	Unit of Measurement
<b>Dependent variables</b>		

<b>Adoption intensity</b>	Acres allocated to improved maize variety divided by total acres of farming land	Proportion	+
<b>Independent variables</b>			
<b>Household characteristics</b>			
Age	Age of household head in years	Years	+/-
Gender	Gender of the household head	1= male ,0= female	+/-
Farm experience	Number of years farmer farmed maize	Years	+
Household size	Number of persons in the household	Continuous	+
Off-farm income	Annual income outside the farm	Continuous	+
Group membership	Membership to a farmers group	(1= yes; 0 = otherwise)	+
<b>Institutional attributes</b>			
Extension service	Farmer contact with extension officer	(1=yes; 0 = otherwise)	+
Access to credit	Farmers access to any form of credit	(1 = yes; 0 = otherwise)	+
<b>Varietal attribute</b>			
High yielding	Variety is perceived to be high yielding	(1 = yes; 0 = otherwise)	+
Early Maturity	The variety is perceived to mature early	(1=yes; 0 =otherwise)	+
Pest and Disease tolerance	The variety is perceived to be resistance to pest and diseases	(1=yes; 0 =otherwise)	+

11  
12  
13  
14  
15  
16  
17  
18  
19  
20  
21  
22

### 3. RESULTS AND DISCUSSION

#### 3.1. Farmer characteristics, environment and preferences

A consideration of farmer characteristics and farmer environment is important in order to explain/support the econometric results from the FRM model. This section looks at the household characteristics, farmer constraints and farmers' varietal preferences. Table 2 shows household characteristics of the surveyed households. The average land acreage in the Bungoma County study sites was 3 (2.89), with an average of 1.4 acres allocated to maize pure stand. According to the key informants, agricultural land per household in the county has been declining due to sub-division for inheritance. The average age of the

23 household head was 51 years, meaning that the farming population in the study site was  
 24 aging.

25  
 26  
 27

Table 2. Household characteristics in Bungoma County, Kenya

Variable	Bungoma (n=500)	
	Mean	Standard deviation
Household head age (years)	51.1	13.8
Household size (number of people)	7	3
Total land size (acres)	3.00	2.89
Total land under maize (acres)	1.7	1.9
Number of maize plots (number)	2	2
Size of main maize plot (acres)	1.4	1.6
Gender of household head	Frequency	Percent (%)
Female	111	28
Male	389	72
Level of education	Frequency	Percent (%)
Secondary	205	41.0
Primary	163	32.6
College/University	128	25.6
None	4	0.8

28 Source: survey data, 2022  
 29 Approximately 33% (n=500) produced maize for subsistence and did not sell any maize. The  
 30 reasons for producing maize subsistence only were given as: no surplus to sell (67% of the  
 31 respondents), objective for production was purely for consumption (28%) and small land  
 32 sizes (2%). Table 3 shows the constraints mentioned by the respondents, and the  
 33 constraints mentioned most frequently were re high cost of inputs, pests and diseases and  
 34 unpredictable weather.

35  
 36  
 37

Table 3: Maize production and marketing constraints in Bungoma County

Constraint	Frequency (n=500)	Percent
	Production	
	constraints	

High cost of inputs	144	28.8
Pests and diseases	142.5	28.5
Unpredictable weather	138.5	27.7
Post-harvest losses	37.5	7.5
Poor seed quality	21	4.2
Poor fertilizer quality	10.5	2.1
Others	6	1.1
Marketing constraints (n=500)		
Low prices	369	34.8
Low yields	161	15.2
Excess supply of maize	133	12.5
Post-harvest losses	103	9.7
Unpredictable weather	93	8.8
Long distance to markets	58	5.5
Other	144	13.6

38

39 A wide range of improved varieties was grown in Bungoma County but the ones grown by  
40 most households include H6213, H513, WH505, DK8031 and H516. The main reasons  
41 given for planting the stated varieties were that they were high yielding (30% of the  
42 respondents), had good taste (17%), had resistance to pests and disease (14%) and were  
43 early maturing (14%). It is apparent that farmers were responding to attributes that minimize  
44 crop failure and those that addresses consumer tastes and preferences.

45

### 46 3.2. Fractional Logit Model results

47

48 Table 4 presents the coefficients and marginal effects estimates from the results of the  
49 fractional logit model. The mean Variance Inflation Factor (VIF) score was 1.42, less than  
50 the critical value of 10, meaning that there was no multi-collinearity detected among the  
51 independent variables. The Breusch-pagan test fails to reject the null hypothesis of  
52 homoscedasticity ( $\text{Chi}^2(1) = 0.04$ ;  $\text{Prob} > \text{chi}^2 = 0.837$ ), thus indicating that there was no  
53 heteroscedasticity. The Wald statistic ( $\text{Wald } \text{chi}^2(11) = 72.59$ ) was significant at a one  
54 percent level, meaning that the model has high predictive power. A total of five variables  
55 were identified as determinants for intensifying improved maize varieties in Bungoma County  
56 as shown in Table 4:

57

58

**Table 4: Determinants of intensity of adoption of improved maize varieties**

Independent variables	Coefficient (robust std error)	Marginal effects (robust std error)
Age	-0.011(0.0043) **	-0.0026(0.0011) **
Sex	-0.053(0.0910)	-0.013(0.0223)
Farming Experience	-0.004 (0.0049)	-0.001(0.0012)
Household size	-0.027(0.0151) *	-0.007(0.0037) *
Off-farm income	-0.121(0.0825)	-0.029(0.0202)
Extension service	-0.228(0.0898) **	-0.056(0.0219) **
Group membership	0.054(0.1006)	0.013(0.0246)
Access to credit	0.041(0.0888)	0.009(0.0217)
High yielding	0.117(0.0891)	0.029(0.0218)
Early yielding	0.294(0.0787) ***	0.0719(0.0191) ***
Tolerance to pests and diseases	0.134(0.0754) *	0.033(0.0184) *
Constant	0.689(0.2072) ***	
Number of Observations		498
Wald chi2(11)		58.78***
Breusch–Pagan/Cook–Weisberg Test for heteroscedasticity		Chi2(1) = 0.04 Prob > Chi2 = 0.8370
Pseudo R2		0.0149
log pseudolikelihood		-339.96322
Mean Variance Inflation factor		1.42

59 Source: Authors' own computation, 2023.

60 Note: *Values in parentheses are standard errors, 10 percent, 5 percent; and 1 percent*  
61 *significant levels are denoted by \*, \*\*, \*\*\* respectively*

62

63 The sample size used for analysis was 498 because 2 respondents had missing data,  
64 therefore did not meet the threshold for analysis.

65

66 The study findings show that a year's increase in the age of the household head reduced the  
67 probability of intensifying maize production by about 0.3%, meaning that older farmers put a  
68 smaller proportion of their land under improved maize production than the younger ones.  
69 This finding corroborates that of [30], who found that older farmers had a negative influence

70 on the intensity of adoption of organic based technologies. Similarly, [31] found a negative  
71 effect of older farmers on the intensity of use of soil and water conservation technologies in  
72 Nigeria. In a study by [32] a negative correlation between age and adoption of agricultural  
73 technologies in South Dakota is reported. In addition, a study in Ghana by [33] shows that  
74 age reduced the intensity of adoption of improved rice technologies. These findings confirm  
75 the age-old fact that risk aversion among farmers increases with their age. This can be  
76 explained by the fact that the ability to provide sufficient labor, good management and  
77 receive information reduces with age, thus setting in risk aversion. It is easy to resonate with  
78 this result for the study area because improved maize varieties require more inputs, and in  
79 the face of unreliable rainfall due to climate change, risk aversion among farmers will  
80 increase, thus reducing the area under improved maize production, especially among older  
81 farmers. Bungoma County is a high rainfall area but it has increasingly received unreliable  
82 rainfall in the past years.

83  
84 A larger household size reduced the intensity of adoption of improved maize varieties in the  
85 study area by about 1%, meaning more family members reduced the chance of putting more  
86 land under improved maize varieties. On the contrary, some studies have reported a positive  
87 correlation between household size and intensity of adoption. A positive correlation between  
88 household size and the intensity of adoption of mulch and manure is reported by [30]. A  
89 study by [33] reports a positive correlation between the number of adults in a household and  
90 adoption of improved rice technologies. The total household size strongly influenced  
91 (positively) the intensity of adoption of improved maize varieties in Benin [8]. All these  
92 studies show that household size was a proxy for labor availability in the household, which  
93 may not always be the case in all studies. A household can be termed as either a production  
94 or consumption unit. A household with a higher proportion of family members who are not  
95 productive on the farm (the very young, sickly and old) can be termed as a consumption unit  
96 while those with a higher proportion of family members who are productive (young adults)  
97 can be termed as a production unit. Therefore, a labor-intensive technology in a household  
98 that is a consumption unit may have a negative effect on the intensity of adoption, while a  
99 labor-intensive technology in a household that is a productive unit may have a positive effect  
100 on the intensity of adoption. The effect of household size on the intensity of adoption may  
101 therefore depend on the composition of the household size and the nature of the technology.  
102 In this study, the households may have been a consumption unit, where a higher proportion  
103 of household members were not productive on the farm. The household size of 7 in the  
104 study area was higher than the national average household size of 4. According to [34], the  
105 age dependency ratio of Bungoma County ranks 10<sup>th</sup> out of the 47 counties, where out of  
106 every 100 people, 104 people below 14 years and above 65 years depend on them. This is  
107 above the national average of 82.

108  
109 In this study, access to extension **services** reduced the probability of intensifying maize  
110 adoption by about 6%. This is contrary to the positive effect of extension to the intensity of  
111 adoption reported in some studies. For instance, [35] found a positive effect of extension to  
112 the intensity of adoption of genetically modified maize in the Eastern Cape Province of South  
113 Africa. In their study, [15] deduced a positive influence of access to extension to intensity of  
114 adoption of conservation agriculture by smallholder farmers in Zimbabwe. A study by [8]  
115 found that access to extension services had a significant and positive influence on the  
116 decision to intensify the use of improved maize seed Benin West-Africa. In their study  
117 conducted in Ghana, [14] found access to extension services having a positive effect on the  
118 intensity of adoption of maize technological packages. Similarly, [11] found that a  
119 household's access to extension **services** gave a positive impact on the intensity of adoption  
120 of irrigation technologies in Machakos County. Finally, [36] found access to extension to  
121 have a positive impact on intensity of adoption of odorless fufu technologies. However, the  
122 negative effect of extension on the intensity of adoption (increase of proportion of land under

123 maize) of improved maize varieties in the study area could be due to the fact that extension  
124 agents encouraged farmers to grow other crops that can increase food security in the face of  
125 climate change, and since the land size is fixed, the acreage under improved maize was  
126 reduced. Due to climate change, the national and county governments have encouraged  
127 smallholder farmers to diversify crop production to minimize crop failure. Most improved  
128 maize varieties require high rainfall and purchased inputs like inorganic fertilizer. Unreliable  
129 rainfall therefore makes farmers plant more drought and pest resistant crops like sweet  
130 potatoes, sorghum and cassava at the expense of improved maize varieties. Maize as a  
131 staple food in Kenya, and more so in Bungoma County is therefore threatened, and this may  
132 be a threat to food security if the production of climate smart crops does not increase  
133 significantly. The goal of every county in Kenya is to increase food security.

134  
135 The study results show that the positive attributes anticipated from growing improved maize  
136 varieties by farmers increased the intensity of adoption. The anticipated early maturing and  
137 disease tolerant varieties attributes increased the probability of adoption by 7% and 3.3%  
138 respectively. This finding lends support to similar studies conducted in Africa. In their study  
139 on intensity of adoption of integrated pest management practices in Rwanda, [16] found that  
140 perceived benefits of the push-pull technology had a positive impact on the intensity of  
141 adoption of the technology. A study in Ghana by [33] shows that perceived intensive use of  
142 labour and capital significantly reduced the probability of adoption of rice technologies. The  
143 expectation of increased yield from improved maize seeds highly influenced the intensity of  
144 adoption of improved seed in a study conducted in Ethiopia [8]. A producer's perception of  
145 profitability strongly **influences** the probability of adoption of precision agriculture  
146 technologies in South Dakota, in the United States [10]. According to [37] increased maize  
147 variety adoption has been attributed to their high yield potential followed by early maturity  
148 and drought tolerance as key traits in Malawi. A study by [5] reports that farmers were willing  
149 to pay for novel traits such as drought tolerance, good ear aspect, high adaptation while  
150 forgoing on high yield performance. These studies are a pointer to the fact that the inherent  
151 technology characteristics as well as the complementary inputs are a strong determining  
152 factor in adoption intensity.

153  
154

#### 155 **4. CONCLUSIONS AND RECOMMENDATIONS**

156  
157  
158  
159  
160  
161  
162  
163  
164  
165

This study sought to find out the factors influencing the intensification of improved maize varieties in Bungoma County, where primary data from 498 households out of the 500 households' samples was used for analysis. This paper contributes to the literature on **the** intensification of agricultural technologies, specifically to intensification of improved maize varieties. In this study, the factors influencing **the** adoption intensity of improved maize varieties can be categorized into personal characteristics of the farmer (age, and household), institutional factor (extension service) and varietal factors (early maturing benefit).

166 **To increase food security, older smallholder farmers should be given special attention to**  
167 **address the causes for their risk aversion given that the results show that the farmers are on**  
168 **average aged (51 years). The perceived benefits of improved varieties came out as a strong**  
169 **determinant for **the** intensity of adoption, thus demonstrating how the possibility of getting**  
170 **benefits from a technology can intensify its adoption. To intensify the use of new**  
171 **technologies research should start from the user of the technology to understand the**  
172 **farmers' desired attributes **of** a technology, and once the technology is developed, farmers**  
173 **need to be sensitized on the positive attributes of the technology. These results underscore**  
174 **the need to have a strong research-extension linkage in the counties where researchers can**  
175 **demonstrate technology benefits to the end-users.**

176  
177  
178  
179  
180  
181  
182  
183  
184  
185  
186  
187  
188  
189  
190  
191  
192  
193  
194  
195  
196  
197  
198  
199  
200  
201  
202  
203

The strong influence that extension has on food security by influencing farmers to reduce the proportion of land under maize is noted in this study. They may have encouraged the production of other crops at the expense of putting more land under improved maize varieties.

### **ACKNOWLEDGEMENTS**

Acknowledgements to God for enabling the authors conduct the study, to the collaborating institutions for allowing their staff to conduct the study and for providing the infrastructure to do the work, to all the extension staff and enumerators in Bungoma County who were involved in data collection.

Funds for this work was given by the the National Research Fund (NRF), Kenya.

### **AUTHORS' CONTRIBUTIONS**

Makokha S.N - Conceptualized and designed the survey, supervised data collection, interpreted data, contributed and compiled the paper

Emongor R. - Conceptualized and designed the survey, supervised data collection, interpreted data, contributed to the paper

Wanjira J.K. - Contributed to the paper

Nzuve F. - supervised data collection, contributed to the paper

Taracha C.O. - supervised data collection, contributed to the paper

Gitonga E.T. - Data analysis and interpretation

204 **REFERENCES**

205

206 [1] Obunyali CO, Karanja J, Oikeh SO, Omanyua GO, Mugo S, Beyene, Y, Oniang'o R. K.  
207 (2019). On-farm Performance and Farmers' Perceptions of Drought-Resilient  
208 Maize Hybrids in Kenya. *Agronomy Journal*, 111(6), 2754–2768. Accessed 20 October 2023  
209 Available: <https://doi.org/10.2134/agronj2019.08.0600>

210

211 [2] Ministry of Agriculture and Livestock, Fisheries and Irrigation (MoALF&I) (2019)  
212 Agricultural Transformation and Growth Strategy (ASTGS) 2019-2029. Republic of Kenya.

213

214 [3] Kilwake P. (2021). Analysis of the determinants of domestic maize prices in Kenya  
215 [Thesis, Strathmore University]. Accessed 30 October 2023 Available:  
216 <http://hdl.handle.net/11071/12671>

217

218 [4] Kenya National Bureau of Statistics (KNBS.). (2019). 2019 Kenya population and housing  
219 census. Kenya National Bureau of Statistics.

220

221 [5] Marenja PP, Wanyama R, Alemu S, Woyengo V. (2021). Trait preference trade-offs  
222 among maize farmers in western Kenya. *Heliyon*, 7(3), e06389. Accessed 2 October 2023  
223 Available: <https://doi.org/10.1016/j.heliyon.2021.e06389>

224

225 [6] Abodi MA, Obare GA, Kariuki IM. (2022). Effects of Maize Importation on the Economic  
226 Welfare of Maize Producers and Consumers in Kenya: A Partial Equilibrium Model  
227 Approach. *Contemporary Agriculture*, 71(3–4), 155–164.

228

229 [7] Srii VS, Nethra N, Umarani K, Lohithaswa HC, Shadakshari YG, Prasad SR. (2021). SNP  
230 genotyping of maize (*Zea mays*) hybrids and parental inbred lines for genetic purity testing  
231 using double digest restriction site-associated DNA sequencing. *Seed Science and  
232 Technology*, 49(3), 193–206. Accessed 30 September 2023. Available:  
233 <https://doi.org/10.15258/sst.2021.49.3.02>

234

235 [8] Mahoussi FE, Adegbola PY, Aoudji AKN, Kouton-Bognon B, Biao G. (2021). Modeling  
236 the adoption and use intensity of improved maize seeds in Benin West-Africa: Double-hurdle  
237 approach. *African Journal of Food, Agriculture, Nutrition and Development*, 21(4), 17931–  
238 17951.

239

240 [9] Kassa Y, Giziew A, Ayalew D. (2021). Determinants of adoption and intensity of improved  
241 faba bean cultivars in the central highlands of Ethiopia: A double-hurdle approach. *CABI  
242 Agriculture and Bioscience*, 2(1), 24. Accessed 25 September 2023. Available:  
243 <https://doi.org/10.1186/s43170-021-00045-8>

244

245 [10] Kolady DE, Van der Sluis E, Uddin MM, Deutz AP. (2021). Determinants of adoption  
246 and adoption intensity of precision agriculture technologies: Evidence from South Dakota.  
247 *Precision Agriculture*, 22(3), 689–710. Accessed 15 August 2023. Available:  
248 <https://doi.org/10.1007/s11119-020-09750-2>

249

250 [11] Muluki KM, Rasugu MH, Njeri MJ, & Nyarindo IH. (2022). Factors influencing Adoption of  
251 Irrigation Technologies among Smallholder Farmers in Machakos County, Kenya. *Journal of  
252 Agricultural Extension*, 26(3), 44–59.

253

254 [12] Gallani S, Krishnan R. (2017). Applying the Fractional Response Model to Survey  
255 Research in Accounting (SSRN Scholarly Paper 2642854). Accessed 16 August 2023.  
256 Available: <https://doi.org/10.2139/ssrn.2642854>

257  
258  
259  
260  
261  
262  
263  
264  
265  
266  
267  
268  
269  
270  
271  
272  
273  
274  
275  
276  
277  
278  
279  
280  
281  
282  
283  
284  
285  
286  
287  
288  
289  
290  
291  
292  
293  
294  
295  
296  
297  
298  
299  
300  
301  
302  
303  
304  
305  
306  
307  
308  
309

- [13] Brown JE, Dunn PK. (2011). Comparisons of Tobit, Linear, and Poisson-Gamma Regression Models: An Application of Time Use Data. *Sociological Methods & Research*, 40(3), 511–535. Accessed 16 June 2023. Available: <https://doi.org/10.1177/0049124111415370>
- [14] Kwawu JD, Sarpong DB, Agyire-Tettey Frank. (2022). Technology adoption intensity and technical efficiency of maize farmers in the Techiman municipality of Ghana. *African Journal of Science, Technology, Innovation and Development*, 14(2), 532–545. Accessed 16 August 2023. Available: <https://doi.org/10.1080/20421338.2020.1866145>
- [15] Pedzisa T, Rugube L, Winter-Nelson A, Baylis K, Mazvimavi K. (2015). The Intensity of adoption of Conservation agriculture by smallholder farmers in Zimbabwe. *Agrekon*, 54(3), 1–22. Accessed 16 August 2023. Available: <https://doi.org/10.1080/03031853.2015.1084939>
- [16] Misango VG, Nzuma JM, Irungu P, Kassie M. (2022). Intensity of adoption of integrated pest management practices in Rwanda: A fractional logit approach. *Heliyon*, 8(1), e08735. Accessed 16 August 2023. Available: <https://doi.org/10.1016/j.heliyon.2022.e08735>
- [17] Arslan A, McCarthy N, Lipper L, Asfaw S, Cattaneo, A. (2014). Adoption and intensity of adoption of conservation farming practices in Zambia. *Agriculture, Ecosystems & Environment*, 187, 72–86. Accessed 21 August 2023. Available: <https://doi.org/10.1016/j.agee.2013.08.017>
- [18] Danso-Abbeam G, Bosiako JA, Ehiakpor DS, Mabe FN. (2017). Adoption of improved maize variety among farm households in the northern region of Ghana. *Cogent Economics & Finance*, 5(1), 1416896. Accessed 21 August 2023. Available: <https://doi.org/10.1080/23322039.2017.1416896>
- [19] Israel GD. (1992). Determining sample size.
- [20] Mercer DE (2004). Adoption of agroforestry innovations in the tropics: A review. *Agroforestry Systems*, 61(1), 311–328. Accessed 25 August 2023. Available: <https://doi.org/10.1023/B:AGFO.0000029007.85754.70>
- [21] Polak S, Liu X. (2006). From random utility to random expected utility: Theory and application to departure time choice. *European Transport Conference (ETC) Association for European Transport (AET)*.
- [22] Kassie BT, Asseng RP, Rotter H, Hengsdijk AC, Ruane MK, Van Ittersum, 2015: Exploring climate change impacts and adaptation options for maize production in the Central Rift Valley of Ethiopia using different climate change scenarios and crop models. *Climatic Change*, 129, no. 1-2, 145-158, doi:10.1007/s10584-014-1322-x.
- [23] Louviere JJ, Hensher DA, Swait JD. (2000). *Stated Choice Methods: Analysis and Applications*. Cambridge University Press.
- [24] Foster AD, Rosenzweig MR. (2010). Microeconomics of Technology Adoption. *Annual Review of Economics*, 2(1), 395–424. Accessed 22 August 2023. Available: <https://doi.org/10.1146/annurev.economics.102308.124433>
- [25] Gebre GG, Amekawa Y, Rahut DB. (2023). Improved maize technology adoption and its intensity among male- and female-headed households in Dawuro zone, Southwestern

310 Ethiopia. Gender, Technology and Development, 27(1), 42–59. Accessed 16 November  
311 2023. Available: <https://doi.org/10.1080/09718524.2022.2140382>  
312

313 [26] Baiyegunhi LJS., Akinbosoye F, Bello LO. (2022). Welfare impact of improved maize  
314 varieties adoption and crop diversification practices among smallholder maize farmers in  
315 Ogun State, Nigeria. Heliyon, 8(5), e09338. Accessed 25 August 2023. Available:  
316 <https://doi.org/10.1016/j.heliyon.2022.e09338>  
317

318 [27] Asiimwe R, Salamula JB, Namaawa J, Diiro GM, Egeru A. (2022). Factors determining  
319 intensity of camel adoption in semi-arid north-eastern Uganda. African Crop Science  
320 Journal, 30(s1), Article s1. Accessed 26 August 2023. Available:  
321 <https://doi.org/10.4314/acsj.v30is1.13S>  
322

323 [28] Papke LE, Wooldridge JM. (1996). Econometric methods for fractional response  
324 variables with an application to 401(k) plan participation rates. Journal of Applied  
325 Econometrics, 11(6), 619–632. Accessed 23 August 2023. Available:  
326 [https://doi.org/10.1002/\(SICI\)1099-1255\(199611\)11:6<619::AID-JAE418>3.0.CO;2-1](https://doi.org/10.1002/(SICI)1099-1255(199611)11:6<619::AID-JAE418>3.0.CO;2-1)  
327

328 [29] Wooldridge JM. (2015). Introductory Econometrics: A Modern Approach. Cengage  
329 Learning.  
330

331 [30] Mwaura, GG, Kiboi, MN, Bett, EK, Mugwe, JN, Muriuki, A, Nicolay, G, & Ngetich, FK.  
332 (2021). Adoption Intensity of Selected Organic-Based Soil Fertility Management  
333 Technologies in the Central Highlands of Kenya. Frontiers in Sustainable Food Systems, 4.  
334 Accessed 26 August 2023. Available:  
335 <https://www.frontiersin.org/articles/10.3389/fsufs.2020.570190>  
336

337 [31] Olawuyi, SO, Mushunje, A. (2019). Determinants of adoption and use-intensity of soil  
338 and water conservation practices among smallholder farmers in Nigeria. African Journal of  
339 Food, Agriculture, Nutrition and Development, 19(3), Article 3. Accessed 26 August 2023.  
340 Available: <https://doi.org/10.4314/ajfand.v19i3.17745>  
341

342 [32] Uddin MM. (2020). Factors influencing adoption and adoption intensity of precision  
343 agriculture technologies in South Dakota. South Dakota State University.  
344

345 [33] Addison M, Anyomi, BK, Acheampong, PP, Wongnaa, CA, Amaning, TK. (2023). Key  
346 drivers of adoption intensity of selected improved rice technologies in rural Ghana. Scientific  
347 African, 19, e01544. Accessed 30 August 2023. Available:  
348 <https://doi.org/10.1016/j.sciaf.2023.e01544>  
349

350 [34] Commission of Revenue Allocation (CRA). 2022. Kenya County Fact Sheets. 2022.  
351 Accessed 30 August 2023. Available: <https://cra.go.ke/wp-content/uploads/2022/06/>.  
352

353 [35] Ngcinela, S, Mushunje, A, Taruvinga, A, Ngarava, S, Mutengwa, CS. (2019).  
354 Determinants of genetically modified (GM) maize adoption and the intensity of adoption in  
355 OR Tambo District Municipality, Eastern Cape Province, South Africa. GM Crops & Food,  
356 10(1), 1–11. Accessed 30 August 2023. Available:  
357 <https://doi.org/10.1080/21645698.2019.1580127>  
358

359 [36] Ume SI, Okoye FU Onwujariri UJ, Achebe U. (2020). Analysis of Intensity of Adoption  
360 of Odourless Fufu Processing Technology by Pro Vitamin A Cassava Variety Processors in  
361 Anambra State of Nigeria; An Implication to Health and Nutritional Food Security.  
362 International Journal of Science and Healthcare Research, 5(7), 34–45.

363  
364  
365  
366  
367  
368  
369  
370

[37] Derwisch S, Morone P, Tröger K, Kopainsky B. (2016). Investigating the drivers of innovation diffusion in a low income country context. The case of adoption of improved maize seed in Malawi. *Futures*, 81, 161–175. Accessed 30 August 2023. Available: <https://doi.org/10.1016/j.futures.2015.08.011>