

Original Research Article

Chilli Leaf Curl Disease – An Emerging Threat to Chilli Cultivation in Maharashtra

ABSTRACT

Chilli (*Capsicum annuum*) is one of the major spice crops of the world. India is the world's largest producer of dry red chilli and contributes 43% of world chilli production. Chilli leaf curl disease (ChiLCD) locally known as 'Churda Murda' is a most destructive disease of chilli in India. The ChiLCD is caused by *Chillileaf curl virus* (ChiLCV), belonging to the genus, *Begomovirus* and family, *Geminiviridae*. The ChiLCV has circular single-stranded (ss) DNA-A genome of ~2.7 kb and it is transmitted by whitefly (*Bemisia tabaci*). The DNA-A component of ChiLCV is often found to be associated with ss DNA satellite molecules of ~1.3 kb designated as alphasatellite and betasatellite. Despite the severe losses due to ChiLCD, a systematic study of the begomoviruses infecting chilli crops in Maharashtra is lacking. Therefore, a survey was made in chilli growing districts of Maharashtra to investigate the ChiLCD. Artificial Intelligence (AI)-based application (App) 'Plantix–your crop doctor' was used to diagnose the begomovirus disease. During the survey different symptoms of ChiLCD, leaf curling, leaf yellowing, crinkling, puckering, vein banding and stunting were observed in diseased chilli plants. In the present study, Plantix–your crop doctor App efficiently diagnosed the ChiLCD and its pathogen ChiLCV. High ChiLCD incidence of 85-100% was observed at Kemwadi village in Osmanabad district and 80-90% at Ranmasle village in Solapur district in Maharashtra. The high incidence of ChiLCD in Maharashtra has been taken into consideration and this can be correlated with various factors such as weather conditions, insecticide-resistant whitefly populations, and the appearance of virulent strains of ChiLCV. Early detection of ChiLCV using the AI-based 'Plantix–your crop doctor' App and effective management of insect vector whitefly could prevent ChiLCV spread and minimize the crop yield losses.

Keywords: Chilli Leaf Curl Disease, Begomovirus, Artificial Intelligence, Diagnosis, Disease Incidence

1. INTRODUCTION

The *Geminiviridae* family is one of the largest families of plant viruses, causing severe crop losses in both monocotyledonous and dicotyledonous plants [1]. It is classified into fourteen

genera based on the genome organization, pair-wisenucleotide identity, host range and insect vectors [2]. *Begomovirus* is the largest genus of family *Geminiviridae* comprises more than 445 species [3]. Begomoviruses are a serious constraint in the cultivation of chilli crops (*Capsicum annuum*) [4]. India is the world's largest producer of dry red chilli and contributes 43% of world chilli production. Leaf curl diseases of chilli caused by begomoviruses has emerged as a serious threat to chilli cultivation in India. Yield losses of 20–50% of marketable fruit have been recorded in Chilli Leaf Curl Disease (ChiLCD) [5]. In many cases begomovirus epidemics lead to complete loss of the crop particularly in seasons favouring whitefly population buildup [6]. Climatic conditions such as sudden increase in temperature, rainfall and relative humidity, intensification of cropping systems, and the presence of alternate hosts have promoted whitefly population buildup which leads to the rapid spread of begomoviruses [4]. ChiLCD is caused by monopartite begomoviruses in Indian subcontinent [7]. The genome of monopartite begomoviruses has a single-stranded (ss) circular DNA of 2.7 kb designated as DNA-A, which is encapsidated in a quasi-isometric geminate particles of 20–30 nm [8]. The DNA-A component of monopartite begomovirus is often found to be associated with ss DNA satellite molecules of ~1.3 kb designated as alphasatellite and betasatellite [2,9]. The betasatellite depends on helper begomovirus for its replication and movement; whereas the self-replicating alphasatellite depends on begomovirus only for their movement [10,11]. The Betasatellite and alphasatellite is involved in overcoming host defense by suppressing the host antiviral innate immunity [11,12]. The betasatellite also functions as a pathogenicity determinant and plays multifaceted roles in the disease development [13]. The *Chillileaf curl virus* (ChiLCV) is identified as the major begomoviruses causing leaf curl diseases in chilli in India [5,14]. The ChiLCD affected chilli plants exhibit symptoms such as enation, leaf crinkling, leaf curling, leaf rolling, vein clearing, vein thickening, vein banding, chlorosis, bushy appearance of plants and stunting [14]. The initial diagnosis of ChiLCD is depends on the visual infection of disease symptomatology. Sometimes plant virus diseases are difficult to diagnose and are often confused with nutrient deficiencies. A subject matter expert can accurately identify the viral diseases of plant. However, diagnosis of begomovirus disease is difficult for farmers due to lack of necessary knowledge about disease symptomatology. Artificial Intelligence (AI) has emerged as a transformative force in various industries, and agriculture is no exception. One notable application of AI in agriculture is its ability to assist farmers in identifying and managing plant diseases. AI technologies, including machine learning and computer vision, have proven to be invaluable tools in enhancing the precision and efficiency of plant disease identification for farmers. Now-a-days farmers are rapidly adopting AI technology in smart farming. Therefore, assessment of AI technology by subject matter experts is deemed necessary to make this technology indispensable in sustainable agroecosystem. In the present study, AI-based application (App) 'Plantix–your crop doctor' was used to diagnose the begomovirus disease. A survey was carried out in the Osmanabad and Solapur districts of Maharashtra to investigate the leaf curl disease of chilli crop.

2. MATERIAL AND METHODS

2.1. Field survey: Survey was carried out at Kemwadi and Ranmasle village in Osmanabad and Solapur districts of Maharashtra respectively. My GPS Coordinates android application was used for geotagging of farmer's field location. Satellite map was obtained using the gps-coordinates webserver. Chilli plants were initially screened for leaf curling, leaf yellowing, crinkling, puckering, enation, vein banding and stunting symptoms and the symptomatic plants were marked.

2.2. Diagnosis of leaf curl disease: Plants marked based on visual inspection were assessed using AI-based App 'Plantix–your crop doctor'. The Plantix App was downloaded

from the 'google play store' and installed on the android phone. Symptomatic plants photographs were captured by the App interface camera and the disease was diagnosed. The Plantix App directly uploaded the captured image to a cloud-based server using the internet where machine learning based algorithms processed the optical patterns, which identify the plant disease with results back to the user within a few seconds.

2.3. Estimation of percent disease incidence: The ChiLCD affected plants were counted along 2 diagonals in an X shape in the field and percent disease incidence was estimated by following formula:

$$\text{Percent of Disease Incidence (PDI)} = \frac{\text{Number of plants showing symptoms}}{\text{Total number of plants examined}} \times 100$$

3. RESULTS AND DISCUSSION

3.1. Incidence of Chillileaf curl disease: During the survey at Kemwadi village in Osmanabad district and Ranmasle village in Solapur district of Maharashtra (Fig.1); different symptoms of Chilli leaf curl disease (ChiLCD) were observed on leaves of chilli (*Capsicum annuum*) plants (Table 1, Fig.2). The ChiLCD affected chilli plants showed typical symptoms of leaf curling (LC), leaf yellowing (LY), crinkling (Cr), puckering (Pu), vein banding (VB) and stunting (St). The LC and Cr symptoms were found common in all the diseased plants observed in the fields. The LY symptom was found more frequent in farmers' fields at Ranmasle village. High ChiLCD incidence of 85-100% was observed at Kemwadi village and 80-90% at Ranmasle village of Osmanabad and Solapur district respectively (Table 1). The stunting of chilli plants with complete yield loss was observed at Kemwadi village where 100% ChiLCD incidence was recorded. The ChiLCD is the most destructive disease and it causes 100% losses to the marketable fruits [5,15,16]. The infected plants at late growth stages showed abscission of flower buds and sterile anthers, which resulted in poor fruit growth and underdeveloped fruits [14]. Earlier it was reported that three begomoviruses, *Chillileaf curl virus* (ChiLCV), *Pepper leaf curl Bangladesh virus* (PepLCBV) and *Tomato leaf curl New Delhi virus* (ToLCNDV) are commonly found in the ChiLCD complex in India [14]. Mixed infection of ChiLCV and PepLCBV in ChiLCD complex in Nagpur district, and ToLCNDV and ChiLCD in Pune district of Maharashtra were reported [14].

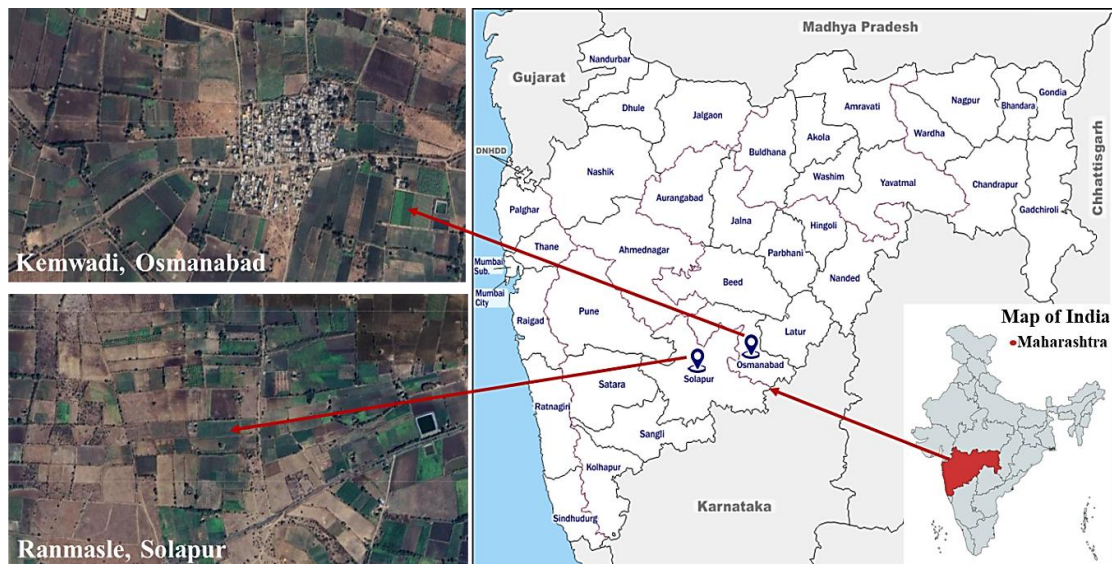


Fig. 1. Satellite map of surveyed locations in Osmanabad and Solapur districts of Maharashtra, India

Table 1. Percent disease incidence of Chilli leaf curl disease

| Location | Field (GPS Coordinates) | Plants observed (No.) | Plants showing symptoms (No.) | Symptoms | Disease Incidence (%) |
|-----------------------------|--|-----------------------|-------------------------------|--------------------|-----------------------|
| Field-1, Kemwadi, Osmanabad | N17 ⁰ 54'5.06304" E75 ⁰ 51'21.54672" | 80 | 68 | LC, Cr, Pu, VB | 85 |
| Field-2, Kemwadi, Osmanabad | N17 ⁰ 54'12.29148" E75 ⁰ 52'20.98308" | 72 | 72 | LC, Cr, Pu, VB, St | 100 |
| Field-3, Ranmasle, Solapur | N17 ⁰ 50'3.376" E75 ⁰ 45'31.4" | 70 | 63 | LC, LY, Cr, VB | 90 |
| Field-4, Ranmasle, Solapur | N17 ⁰ 50'3.124" E75 ⁰ 45'59.187" | 85 | 68 | LC, LY, Cr, Pu | 80 |

**Following abbreviation of leaf curl disease symptoms were used in this study, LC (Leaf Curling), LY (Leaf Yellowing), Cr (Crinkling), Pu (Puckering), VB (Vein Banding), St (Stunting)*

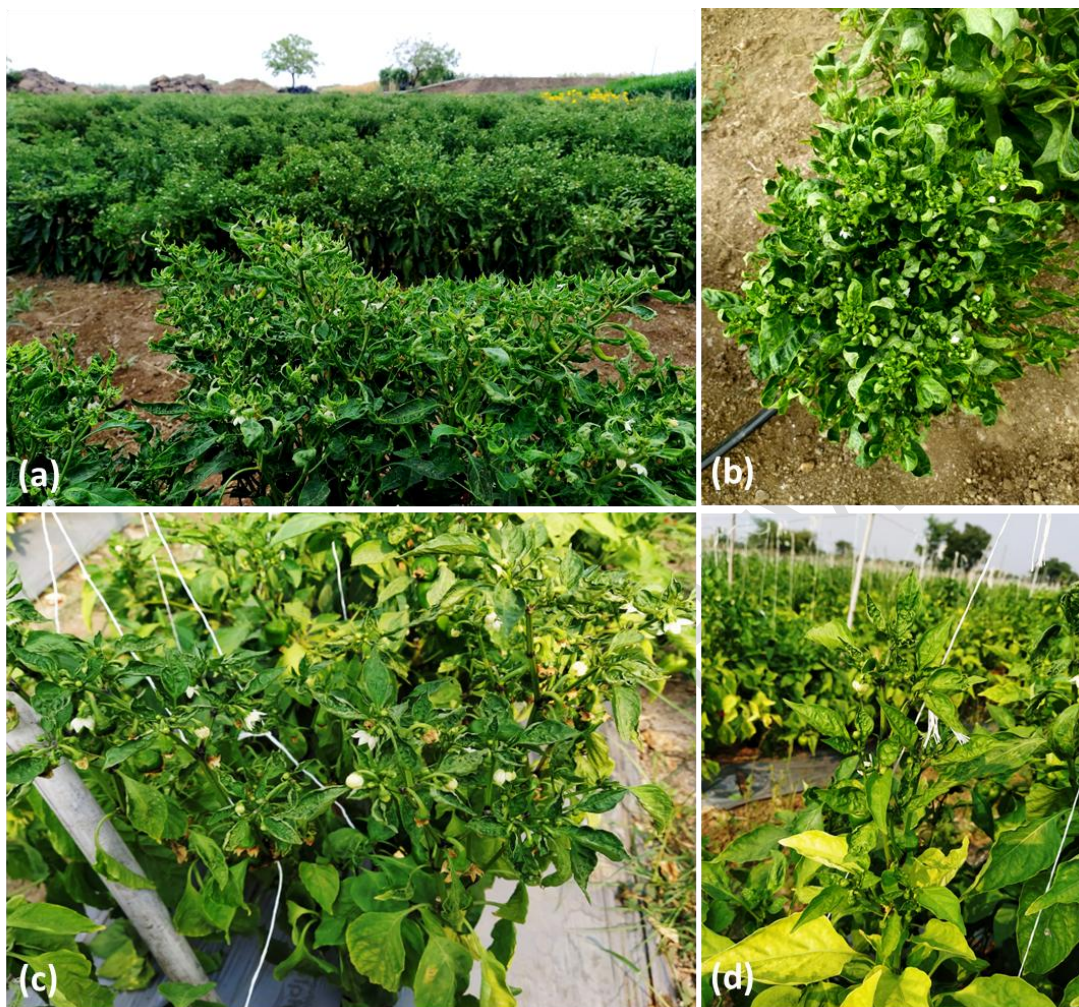


Fig. 2. Chili plants showing Chillileaf curl disease (ChiLCD) symptoms at Kemwadi village in Osmanabad district (a & b) and Ranmasle village in Solapur district (c & d)

3.2. Assessment of AI technology in diagnosis of ChiLCD: Artificial intelligence (AI) based application (App) 'Plantix–your crop doctor' was used to diagnose the ChiLCD. The 'Plantix–your crop doctor' App was developed by a German start-up company Progressive Environmental & Agricultural Technologies (PEAT). This App assists in identifying plant disease with the help machine learning and artificial intelligence. In this study 'Plantix–your crop doctor' App efficiently identified the ChiLCD and its pathogen ChiLCV in the field condition (Fig. 3). Recently, Siddiqua *et al.*, [17] assessed the applicability of different AI Apps for plant disease detection. They have found that among 17 Apps tested; only one App 'Plantix–your crop doctor' successfully identify the plant disease and detect the pathogen. The present study corroborated previous findings and also revealed that the 'Plantix–your crop doctor' App accurately diagnose the begomovirus disease. Recent advancement of AI technology revolutionized the plant disease diagnosis by enabling farmers to identify the disease precisely and also suggested potential treatments for the

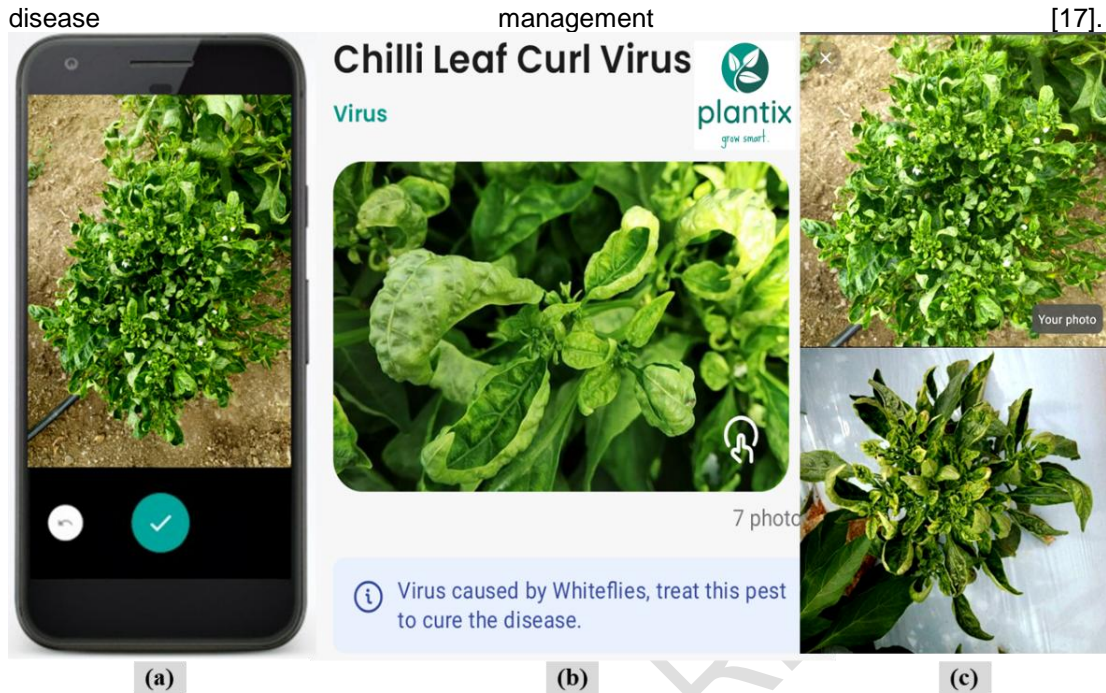


Fig. 3. Detection of ChiLCV using 'Plantix–your crop doctor' App, (a) photograph of diseased plant was captured using the android phone App interface camera, (b) Chilli leaf curl virus was detected by the App, (c) uploaded photograph matched with similar symptom photograph available on the App server.

4. CONCLUSION

The present study highlighted the high incidence of ChiLCD in Maharashtra and the accurate diagnosis of ChiLCV by AI-based 'Plantix–your crop doctor' App. Early detection of ChiLCV using the 'Plantix–your crop doctor' App and effective management of insect vector whitefly could prevent ChiLCV spread and minimize the crop yield losses. Agricultural technology needs advanced biotechnological tools to reduce crop losses and feed extra mouths; the global population is estimated to increase by two billion over the next 30 years. The high incidence of ChiLCD in Maharashtra has been taken into consideration and this can be correlated with various factors such as weather conditions, insecticide-resistant whitefly populations, and the appearance of virulent strains of ChiLCV, thus insightful future research is needed to protect the chilli crop from the devastating ChiLCD.

REFERENCES

1. Varma A, Malathi VG. Emerging geminivirus problems: a serious threat to crop production. *Ann Appl Biol.* 2003;142:145–164. doi:10.1111/j.1744-7348.2003.tb00240.x.

2. Zerbini FM, Briddon RW, Idris A, Martin DP, Moriones E, Navas-Castillo J, et al. ICTV Report Consortium. ICTV Virus Taxonomy Profile: Geminiviridae. *J Gen Virol.* 2017;98(2):131-133. doi:10.1099/jgv.0.000738.
3. Fiallo-Olivé E, Lett JM, Martin DP, Roumagnac P, Varsani A, Zerbini FM, et al. ICTV Virus Taxonomy Profile: Geminiviridae. *J Gen Virol.* 2021;102(12):001696. doi:10.1099/jgv.0.001696.
4. Kenyon L, Kumar S, Tsai WS, Hughes JDA. Virus diseases of peppers (*Capsicum* spp.) and their control. *Adv Virus Res.* 2014;90:297–354. doi:10.1016/B978-0-12-801246-8.00006-8.
5. Thakur H, Jindal SK, Sharma A, Dhaliwal MS. Chilli leaf curl virus disease: a serious threat for chilli cultivation. *J Plant Dis Prot.* 2018; 125:239-249. doi:10.1007/s41348-018-0146-8.
6. Pico B, Diez MJ, Nuez F. Viral diseases causing the greatest economic losses to the tomato crop. II: the tomato yellow leaf curl virus—a review. *Sci Hort* 1996;67:151–196. doi:10.1016/S0304-4238(96)00945-4.
7. Chattopadhyay B, Singh AK, Yadav T, Fauquet CM, Sarin NB, Chakraborty S. Infectivity of the cloned components of a begomovirus: DNA- β complex causing chilli leaf curl disease in India. *Arch Virol.* 2008;153(3):533-9. doi:10.1007/s00705-007-0017-2.
8. Harrison BD. Advances in geminivirus research. *Annu Rev Phytopathol.* 1985;23:55-82. doi:10.1146/annurev.py.23.090185.000415.
9. Brown JK, Fauquet CM, Briddon RW, Zerbini FM, Moriones E, Navas-Castillo J. Family Geminiviridae. In: King AMQ, Adams MJ, Carstens EB, Lefkowitz EJ (eds) *Virus taxonomy. Ninth report of the international committee on taxonomy of viruses.* Elsevier Academic Press, London, 2012; pp 351–373.
10. Briddon RW, Stanley J. Subviral agents associated with plant single-stranded DNA viruses. *Virology.* 2006;344(1):198-210. doi:10.1016/j.virol.2005.09.042.
11. Gnanasekaran P, Kishorekumar R, Bhattacharyya D, Kumar RV, Chakraborty S. Multifaceted role of geminivirus associated betasatellite in pathogenesis. *Mol Plant Pathol.* 2019;20(7):1019–1033. doi:10.1111/mpp.12800.
12. Abbas Q, Amin I, Mansoor S, Shafiq M, Wassenegger M, Briddon RW. The Rep proteins encoded by alphasatellites restore expression of a transcriptionally silenced green fluorescent protein transgene in *Nicotiana benthamiana*. *Virus disease.* 2019;30(1):101-105. doi:10.1007/s13337-017-0413-5.
13. Kumar RV. Plant antiviral immunity against geminiviruses and viral counter-defense for survival. *Front Microbiol* 2019;10:1460. doi: 10.3389/fmicb.2019.01460.
14. Kumar RV, Singh AK, Singh AK, Yadav T, Basu S, Kushwaha N., et al. Complexity of Begomovirus and betasatellite populations associated with chili leaf curl disease in India. *J Gen Virol.* 2015. 96(10):3143–3158. doi:10.1099/jgv.0.000254.
15. Kumar S, Kumar R, Singh AK, Singh M, Rai AB, Rai M. Incidence of leaf curl disease on capsicum germplasm under field conditions. *Indian J Agric Sci.* 2011;81(2):187–189.
16. Senanayake DMJB, Varma A, Mandal B. Virus–vector relationships, host range, detection and sequence comparison of Chilli leaf curl virus associated with an epidemic of leaf curl disease of chilli in Jodhpur. *Indian Phytopathol.* 2012;160:146–155. doi:10.1111/j.1439-0434.2011.01876.x.
17. Siddiqua A, Kabir MA, Ferdous T, Ali IB, Weston LA. Evaluating Plant Disease Detection Mobile Applications: Quality and Limitations. *Agronomy.* 2022;12(8):1869. doi.org/10.3390/agronomy12081869.