

Characterizing land use land cover patterns and microclimate of agricultural and agroforestry landscapes in a rainforest zone of Nigeria using Geospatial Techniques

Abstract

There is increasing need to develop sustainable land use and landscape management practices to avert accelerating trends of land, water and ecosystem degradation and for climate mitigation. The study characterizes land use and land cover patterns and microclimate of permanent (forest, agroforestry, fallow, cocoa, oil palm, citrus and ornamental plant field) and annual crop land use systems in a rainforest zone of Nigeria using geospatial techniques. The land use types were: permanent (forest, agroforestry, fallow, cocoa, oil palm, citrus and ornamental plant field) and annual cropland. Vegetation indices (Normalized Difference Vegetation Index: NDVI, Normalized Difference Water Index: NDWI and Soil Adjusted Vegetation Index: SAVI) were deployed for characterizing land use vegetation cover patterns in relation to vigour and health in addition to responses to weather variables (temperature and rainfall). The NDVI intensities of vegetation cover from the land use types showed differences in vigour and health of vegetation during the rainy and dry seasons of 2017 to 2019. The NDWI of vegetation cover intensity indicates differences in moisture conditions of vegetation cover, the vegetation of the land use systems had more water content (received more rainfall) in 2017 compared to 2018 and 2019 during the rainy season while during the dry season of 2019, NDWI intensity was highest compared to 2018 and 2017. NDVI and NDWI also showed that vegetation cover of permanent land uses had better vigour and health compared to annual (maize) field. SAVI was applied to correct NDVI of vegetation cover patterns of land use types with reference to canopy gaps (soil brightness within canopy especially in spots where vegetation cover is sparse). High SAVI intensities were obtained during rainy compared to the low values during dry season (sparse vegetation cover). Decreasing order of SAVI intensities were agroforestry, oil palm, ornamental plant field, citrus, cocoa, fallow land and maize crop field. Result from the correlations among vegetation indices (NDVI, NDWI and DSAVI) were strong association ($R^2 = 1$) among the years and seasons. The strong R^2 values imply that less than 10% of changes in NDWI (the explanatory variables) can be explained by changes in NDVI and SAVI (the dependent variable). Temperature and rainfall differed within months and years of study. Temperatures were highest for March, April and May while rainfall was highest for September of 2017 and 2018 and in October, 2019. Significantly lower rainfall amounts were received for January, February, November and December. The biophysical findings from this study may advance development of strategies for sustainable land use and management systems support climate change adaptation and ecosystem conservation in the study area.

Keywords: Rainforest, land use, vegetation, weather, landscape, ecology, services, geospatial.

Rewrite the abstract. It should include the importance of the topic, then the goal of the study, then the most important findings of the study, all within one brief paragraph, preferably not exceeding 200 words

INTRODUCTION

The West African rainforest belt is characterized by large biomes of the tropical and subtropical, savannah and grassland (Wilson and Primack, 2019). This region is rich in biodiversity (Gorenflo et al., 2012, FAO Stat, 2020) where agriculture is a major source of livelihood, food,

and raw materials for industries, and foreign exchange earners. Agriculture contributes about 30 percent of the GDP to Nigeria economy, employs about 70 percent of the labour force and accounts for over 70 percent of non-oil exports, and provides over 80 percent of the food requirement of the country (Enisan&Adeyemi 2013; FAO, 2014). Nigeria has about 98.3 million hectares of land of which about 74 million hectares are useful for agriculture (Opara, 2011). Cultivated lands in Nigeria occupied 44.7 percent of land area with 37.3 and 7.4 percent consisting of arable land and permanent crops respectively while permanent meadows pastures constitute 33.3 percent, forest cover 9.5 percent, forest area covering 9.5 percent and other land use take 12.6 percent (FAO, 2015). Nigeria, lies within the Sub-Saharan Africa (SSA) region, characterized by large biomes of the tropical and subtropical, savannah and grassland (Wilson and Primack, 2019). The SSA is rich in biodiversity (Gorenflo et al., 2012, FAO Stat, 2020). Agriculture is a major source of livelihood in SSA. Agriculture contributes about 30 percent of the GDP to Nigeria's economy, employs about 70 percent of the labour force and accounts for over 70 percent of non-oil exports, and provides over 80 percent of the food requirement of the country (Mabogunje, 2003); Enisan&Adeyemi 2013; FAO, 2014). Nigeria has about 98.3 million hectares of land of which about 74 million hectares are useful for agriculture (Opara, 2011). Cultivated lands in Nigeria occupied 44.7 percent of land area with 37.3 and 7.4 percent consisting of arable land and permanent crops respectively while permanent meadows pastures constitute 33.3 percent, forest cover 9.5 percent, forest area covering 9.5 percent and other land use take 12.6 percent (FAO, 2015).

Expansion and intensification of agriculture have been major drivers of the decline in biodiversity and ecosystem services (Foley et al 2005; Kuyah et al., 2016). This underscores the emerging value placed on sustainable management of agricultural landscapes and their potential to supply ecosystem services (Sonja, 2011). Aside from the provision of food and fiber, agricultural landscapes offer habitats for insects that deliver pollination and pest control services (Morandin&Kremen, 2013). Services rendered by the ecosystem are altered through the expansion and intensification of agriculture, this will affect the livelihood of the human population most of which dwell in the rural areas and rely on ecosystem services for their living through smallholder fielding, pastoralism, and fisheries (Egoh et al., 2012). Human influence on the land and other natural resources is accelerating because of global rapid population growth (Kanianska, 2016; BokaieZarkesh et al., 2016; Zang et al., 2013), leading to creating more need for settlements, roads, increased demand for food and shelter, basic amenities and increase in agricultural production (Nzoiwu et al., 2017). This has invariably led to an increase in the encroachment on natural vegetation, converting wild lands to agriculture and other uses (Kanianska, 2016). It is therefore known that anthropogenic activities have important impacts on ecosystem processes in landscapes (Bizuhoraho et al., 2017). However, vegetation cover within a locality ensures ecosystem sustainability and services such as the prevention of soil erosion, reduction in soil and nutrient loss, and the biogeochemical cycles (Hooper et al., 2005, Kuyah et al., 2016).

According to Fairhurst (2012), a farming system in a broad sense encompasses all components of a field enterprise including cropland, cropping system, livestock, common grazing land, and woodlots management. The farming and cropping systems in Nigeria are diverse, permanent, and annual (arable) crop fields permanent land usesystems are based on the production of industrial tree crops notably; cocoa, oil palm, and rubber with food crops sometimes inter-planted between them (Akano et al., 2018). This type of fielding system is also called Agroforestry. Agroforestry is recognized as a land use option in which trees provide both product and environmental

services (Alao and Shuaibu, 2013, Kuyah et al., 2016). It is well known that smallholder farmers in Sub-Saharan Africa raise and manage a mix of exotic and indigenous trees in different ways to provide a variety of ecosystem services and improve their field produce (Nyaga et al., 2015). Research has however shown that land uses that incorporate forest such as agroforestry and forest-grass following has great potential for carbon sequestration (Resende, 2022). It is a carbon fielding strategy, involving carbon trapping and long-term storage of atmospheric carbon dioxide (Stephanie, 2018). This process has been described as critical to mitigating or deferring global warming (Jacobson, 2019).

Agricultural management and land use practice have the potential to resolve adaptation challenges to climate change and variability of weather events and provision of ecosystem services. Such understanding would promote the sustainability of ecosystems and improve the performance of agriculture as a strategy for climate change mitigation (adaptation and resilience building).

Human influence on the land and other natural resources is accelerating because of global rapid population growth (Zang et al., 2013, Kanianska, 2016; BokaieZarkesh et al., 2016), leading to increases in agricultural production (Nzoiwu et al., 2017). Agricultural land use activities in relation to land cover changes and effects on terrestrial ecosystem functions and fitness have been recognized as a global problem (OECD, 2016). This has invariably led to an increase in the encroachment on natural vegetation, converting wild lands to agriculture and other uses (Kanianska, 2016). It is therefore known that anthropogenic activities have important impacts on ecosystem processes in landscapes (Bizuhoraho et al., 2017). However, vegetation cover within a locality ensures ecosystem sustainability and services such as prevention of soil erosion, reduction in soil and nutrient loss, and the biogeochemical cycles (Hooper et al., 2005, Resende, 2022).

Agricultural land use activities in relation to land cover changes and effects on terrestrial ecosystem functions and fitness have been recognized as a global problem (OECD, 2016, IPCC 2013, Bufebo, 2021). Land use systems have both drivers and regulators of ecosystem energy and water balance and other ecosystem services. Land use and land cover changes are the major determinants of environmental services rendered by the ecosystem (Bufebo, 2021). The scenarios of neighbourhood and ecosystem responses of land use and land cover elements (vegetation pattern) in tropical agroecology is inadequately researched (Nair et al., 2010; Agele et al., 2017). In particular, land surface pattern-processes notably from tropical land use types such as intercropping, land rotation fallow, and agroforestry and the correlates with ecosystem processes and microclimate has not been adequately evaluated.

Land use-enhanced land cover patterns in the landscape depend on factors such as vegetation type, soil type, and land use intensity (IPCC 2013, Bufebo, 2021). Agricultural land use activities and associated land cover patterns have consequences on terrestrial ecosystem functions and fitness (OECD, 2016). Land use and land management practices are designed to increase soil C storage, restoration of degraded lands, and improve livestock and manure management to reduce CH₄ and N₂O emissions (Bufebo, 2021). Sustainable land use practices have environmental benefits of carbon sequestration for GHG mitigation and biodiversity conservation. The carbon sequestration potential of forest-based land use systems may offer added income stream for smallholder farmers. In order to sustainably manage the potential risks and challenges of global environmental change and climate extremes, sustainable resource management practices are required to improve environment performance of land use especially of the humid tropics.

Sustainable land use practice have environmental benefits of carbon sequestration for GHG mitigation and biodiversity conservation.

Patel et al. (2002) reiterated that space-based technologies have played a very important role in the improvement of the system of acquiring and generating agricultural information. The premier way of generating this information is through the use of satellite remote sensing, Geographic Information Systems (GIS), and other related methodologies (Uchua, 2011). Atzberger (2013) listed some applications of remote sensing in agriculture. The author concluded that biomass and yield estimation; vegetation vigor and drought stress monitoring; assessment of crop phenological development; crop acreage estimation and cropland mapping; and mapping of distribution and land use/land cover changes. Aerial images have been widely used for vegetation performance prediction, water stress on vegetation, and soil availability/brightness (Batta, 2011). These images provide high spatial cloud-free information of vegetation and detection of changes in vegetation spectra characteristics. Analysis of vegetation and detection of changes in vegetation patterns are very important for natural resources management and monitoring (Panda et al., 2010).

Agricultural practices are known to have environmental effects that affect a wide range of land use and land use cover scenarios (Gbenga and Adeyemi, 2013), Literature reports that ecosystem processes of carbon, water balance, and energy fluxes in landscapes are affected by land use, land cover, and vegetation dynamics. Such effects have been attributed to the feedback of landscape processes on the climate (Agele et al., 2018, Awoonor et al., 2022).

This study incorporated space-based remote sensing technology (GIS) to evaluate the impacts of land use and land cover patterns along agricultural and agroforestry landscapes in a rainforest zone of southern Nigeria. The objective of the study is to characterize land use and land cover patterns of permanent (forest, agroforestry, fallow, cocoa, oil palm, citrus, and ornamental plant field) and annual crop land use systems in a rainforest zone of Nigeria using geospatial techniques

Materials and Methods

Land use systems along the chronosequence of the Teaching and Research Farm, the Federal University of Technology, Akure, Nigeria. The land uses were delineated using their coordinates (aid of GPS) (Plate 1.). Each land use and its coordinates were shown in Table (1) while Table (2) showed their description respectively. The study site is geographically geo-referenced on coordinate lines of 734393E, 808614N; on the western flank of meridians. The climate of the study site is characterized by humid tropical climate of the West African Monsoonal type with distinct wet and dry seasons. Annual rainfall reaches a mean value of about 1450 mm coupled with high temperature reaching a peak of about 32 °C around February and a threshold of about 21 °C around August. Relative humidity ranges from about 70% around January to about 90% in July (Agele et al., 2017). Vegetation is a regrowth rainforest type that consists of grasses and scattered trees but is hard in many parts to be modified with human activities such as building, road, and land cultivation. The surface soils are largely of residual soils which are the weathering product of the basement rocks. The soils are reddish to brownish in colour, having medium to coarse-grained mineral matter with some clayed materials. They are characterized by mottled and sticky features in some locations (www.iprojectmaster.com).

Satellite Images and Digital Image Processing

Cloud-free satellite images of sentinel-2 for the study period (Year 2017 to 2019) were downloaded from the archives of USGS Earth Explorer (<http://earthexplorer.usgs.gov/>).

The imageries were downloaded on 7th February, 2017 and 30th October 2017 for dry and wet seasons respectively for the year 2017, 2018 images were downloaded on 23rd January, 2018 and 24th November, 2018 for dry and wet seasons respectively while 17th February, 2019 and 24 December, 2019 were for dry and wet seasons respectively for the year 2019. Sentinel-2 data was calibrated using the data-specific utilities of ENVI (Ver. 5.3) software program, and the SNAP 7.0 software in which the sensor digital numbers were converted into spectral radiance in order to measure the amount of electromagnetic radiation reflected from a spot on the surface.

Normalized Difference Vegetation Index (NDVI): NDVI was calculated using NIR and the Red bands (Band 4 and 5 Table 3) of the Sentinel-2 images. These bands were processed using the raster calculator of the ArcTool Box in ArcGIS to derive the vegetation index using equation 1.

$$NDVI = (NIR - R) / (NIR + R) \dots\dots\dots 1$$

where NIR is the reflectance value of Near Infrared Band (Band 5) and R is reflectance value of Red (band 4).

Normalized Difference Water Index (NDWI): NDWI was calculated using NIR and VNIR bands (Band 5 and 6 Table 3) of the Sentinel-2 images. These bands were also processed using raster calculator of the ArcTool Box in ArcGIS to derive the vegetation index as:

$$NDWI = (NIR - VNIR) / (NIR + VNIR) \dots\dots\dots 2$$

where NIR is the reflectance value of Near Infrared Band (Band 5) and VNIR is the reflectance value of Visible Near Infrared Band (band 6).

Soil Adjustment Vegetation Index (SAVI): SAVI was calculated using NIR and R bands (Band 5 and 4 Table 3) of the Sentinel-2 images. These bands were also processed using raster calculator of the ArcTool Box in ArcGIS to derive the vegetation index using equation 2

$$SAVI = ((NIR - Red) / (NIR + Red + L)) * (1 + L) \dots\dots\dots 3$$

where NIR is the reflectance value of Near Infrared Band (Band 5), R is the reflectance value of Red (band 4) and L is the soil correction factor which is defined as 0.5.

Analysis of vegetation indices and generation of maps for each vegetation index (NDVI, NDWI and SAVI) were generated with their corresponding index values. Climatic variables used for the study (rainfall and temperature) were downloaded from NASA (National Aeronautics and Space Administration (<https://power.larc.nasa.gov/data>) using the geocoordinate of the study area. Local weather data was obtained for the Meteorological \observatory of the Department of Meteorology and Climate Science, Federal University of Technology, Akure, Nigeria. Data were analysed and trends were represented accordingly.

RESULTS

Normalized Difference Vegetation Index (NDVI) , years and seasons of land use types

The Normalized Difference Vegetation Index (NDVI) was calculated and extracted for the years of study and seasons (rainy and dry) (Plate 2a and b, 3a and b and 4a and b). NDVI values were extracted and maps generated for each land use type for years of study, rainy and dry seasons for each year. The NDVI trends among land use types during periods of study (2017 – 2019) during rainy and dry seasons showed that values were highest for rainy season compared with dry, highest values were obtained for 2018 and lowest in 2017 observations. Highest NDVI intensities were recorded in the year 2018, followed by year 2019 and 2017 respectively. NDVI intensity levels were ranked as Very High (which is very dense), High (Dense), Medium (light) and Low (very light) for land use vegetation cover patterns (Figure 1a and b). among the years of study, the decreasing order of intensity levels from Very-High, High and Medium intensities were: 2018, 2019 and 2017 respectively.

NDVI vegetation intensity of land use types is shown in Figure 1c and d for rainy and dry season periods

During the rainy season, among the vegetation covers, 2018 had higher values of NDVI followed by 2019 and 2017 (Figure 1c) and among land use types, agroforestry had the highest NDVI value closely followed by Oil palm, Cocoa, Citrus and Maize field. Permanent land uses had the highest value in 2019 and the least in 2017. The trends of NDVI among land uses during dry season showed that 2018 had the highest values followed by 2017 and 2019 and for land use types, the highest NDVI values were recorded for agroforestry followed by oil palm, cocoa, citrus and maize fields respectively (Figure 1d).

Normalized Difference Water Index intensity of vegetation cover of land use types

The Normalized Difference Water Index (NDWI) generated land use intensity maps for land use types and years of study (2017, 2018, and 2019) (Figure 2a to 2d).

For 2017, NDVI values were close among permanent crop fields compared with arable annual crop field (maize) under rainy season conditions. For dry season, agroforestry was highest followed by oil palm and cocoa fields while values were similar for citrus and maize fields.

For 2018, NDVI values were close for agroforestry and oil palm fields and lowest for maize under rainy season and during the dry season, agroforestry maintained highest NDVI values during 2019 rainy season followed closely by oil palm field. During the rainy season 2017 had the highest NDWI intensity followed by 2018 and 2019 (Figure 2a). Dry season observations showed differences among the years, 2019 had the highest intensity followed by 2017 and 2018 (Figure 2b).

NDWI of vegetation cover among land use types differed between the rainy and dry season

Figure 2c and d present NDWI trends among land use types during periods of study (2017 – 2019). Among land use types, negative NDWI values were observed for maize, citrus and cocoa fields especially during the dry season. Compared with values of NDWI for the land use types for 2017, lower values were obtained for 2018 and 2019 rainy and dry seasons. During the rainy seasons of 2018, significantly lower values of NDWI were obtained for maize and citrus fields compare with oil palm, agroforestry and cocoa fields. During the dry season, NDWI values were lower compare with rainy. Highest NDWI was recorded on Oil palm field followed by Agroforestry, Cocoa field and Citrus field while the lowest values were recorded on Maize field (Figure 2c) The NDWI maps for dry season showed that highest values were obtained for 2019 followed by 2017 and 2018 (Figure 2d). Agroforestry had the highest values, followed by Oil palm, Ornamental plant field, Citrus and Maize field respectively. Agroforestry recorded highest NDWI in 2017 followed by 2018 and 2019. Oil palm field also recorded highest value in 2017

followed by 2019 and 2018, however, Cocoa, Citrus and Maize fields recorded highest NDWI values in 2019, followed by 2017 and 2018. Lowest NDWI value was recorded on Maize field in year 2018 (Figure 12b).

Soil Adjustment Vegetation Index intensity of vegetation cover of land use types

The Soil Adjustment Vegetative Index (SAVI) map for the land uses of the study area were generated. (Figure 3a to 3c). The year 2017 had lowest SAVI intensity levels compared with 2018 and 2019 for which the trends in magnitudes were similar

The seasonal trends of SAVI intensity showed that During the rainy and dry seasons of 2017, the highest NDWI values were highest for rainy season compare with dry. During the rainy season of 2018 recorded the highest SAVI values followed by year 2019 and 2017 (Figure 3a). However, 2017 was the highest values of SAVI values for the low-intensities followed by 2018 and 2019. During dry season 2018 had the highest SAVI values, followed by 2017 and 2019. However, year 2017 recorded the highest values at the Low-intensity level (Figure 3b). Observations showed that SAVI intensities during dry season differed among the years for all the levels of SAVI (Very High to low) (Figure 2b).

SAVI of land use vegetation cover patterns.

Across the land uses, maize field had significantly lower SAVI values and highest were observed for agroforestry followed by oil palm. The observations of SAVI among land use types during rainy season showed differences among the land uses and years (Figure 3c and d). The decreasing order were 2018, 2019 and 2017 for the land uses. For years 2017 and 2018, maize field had significantly lower SAVI values while the highest but close values were observed for oil palm and agroforestry. For year 2019, increasing values of SAVI were: citrus, cocoa, maize, oil palm and agroforestry

Rainy season of 2018 recorded the highest SAVI values followed by 2019 and 2017 Fig. 3c showed the SAVI trends at different land uses, Agroforestry recorded the highest index followed by Oil palm field, Cocoa field and Citrus field while the least SAVI values were recorded on Maize field. Cocoa field had highest SAVI value in 2018 followed by 2017 while the least was observed for 2019 while Maize field recorded 2019 as the highest followed by 2018 and 2017 respectively. The dry season of 2018 recorded the highest SAVI values followed by 2017 and 2019. (Figure 3d). Among land use types, SAVI values were highest for agroforestry, followed by Oil palm field, Cocoa field and Citrus field and the least was recorded on Maize field. However, maize field had highest SAVI in 2017.

Table 2 presents trends in NDVI, NDWI and SAVI values for permanent and arable crop fields during rainy and dry seasons of the study period (2017 to 2019). Consistently, NDVI values were higher for rainy compare with the dry season, and for permanent over arable crop fields across the years of observation. This observation is consistent for both NDWI and SAVI. For 2018, negative NDWI values were found for arable crop for both rainy and dry seasons.

The relationships among the vegetation indices (NDVI, NDWI and SAVI), showed that the correlations were very strong with very high R^2 values) (Table 3). The highest R^2 value extracted from the relations of NDVI and NDWI was recorded in 2017 followed by 2019 and 2018 respectively. The relationships were significant ($P \leq 0.05$) in 2017 and 2019 but not for 2018. The relationships between NDVI and SAVI showed strong correlation ($P \leq 0.05$) producing high R^2 values which were similar for all the years. Similar results were obtained in these relationships for both rainy and dry seasons

Temperature and rainfall differed among the months and years of study is presented in Figures 4a and b.. Temperatures were highest for March, April and May of 2017, 2018 and 2019 I(Figure

4a). Rainfall was highest for September of 2017 and 2018 and in October, 2019. Significantly lower rainfall amounts were received for January, February, November and December in 2017 while in 2018 and 2019, lowest rainfall was observed for January, February, March and December. Increasing rainfall amounts were observed from May to September of each year (Figure 4b).

Discussion

Effect of Land Use and Season on Vegetation Indices

Results of the indices of vegetation intensity of the study site showed that the vegetation was healthiest in 2018 compared with 2019 and 2017 during the respective rainy and dry seasons. Furthermore, NDVI and SAVI values recorded showed that in 2018, the vegetation experience low stress conditions. Higher values of the vegetation indices (NDVI and SAVI) were obtained during rainy season than dry season. The vegetation indices responded to variability seasonal weather conditions considering factors of temperature and rainfall. The results were consistent with those of Yuan et al. (2015), Edith et al. (2020), Antonio et al. (2021) and Adaeze et al. (2022) that NDVI is sensitive to weather variability. It is important to report that across the land uses, the vegetation was deep green during 2018 than other years of study. Roznik et al. (2022) reported that the higher vegetation index (NDVI) values denote greater potential for growth and vigour. USGS recommended the use of Soil Adjusted Vegetation Index (SAVI) for correcting Normalized Difference Vegetation Index (NDVI) in order to explain soil brightness in areas where vegetation cover is low. The strong correlation of NDVI and SAVI ($R^2 = 1$) among the years of study and seasons is consistent with the reports of Vani and Venkata (2017) and Shibani et al. (2023). The normalized difference water index (NDWI) and its intensity indicate vegetation responses to water availability in the ecosystem (soil and air) Water was more available during the year 2017 compared to 2018 and 2019 during the rainy season. Adebayo, (2021) and Tajudeen (2022) reported the importance of rainfall to crop productivity and Mosunmola et al, (2020) and Farmsquare, (2023) reported the effects of rainfall variables such as onset, cessation and length of growing season on agricultural productivity.

Lowest NDWI value for study site was observed in 2019 during the rainy season. However, 2019 recorded the highest NDWI value for the dry season compare to 2018 and 2017. Rainfall amount was high in 2019 in addition to high temperature which offered a more favourable growing environment. Diaz and Osmond (2017) attributed good vigour of vegetation to favourable rainfall and temperature of the growing season. NDVI values of the land use types showed that the land use types had healthier vegetation in 2018 except Maize field that recorded its highest NDVI in 2019 during the rainy season. This observation showed the intensity of farming activities on maize field in 2019. This result supported the findings of Sulimar et al. (2018) and Mugabowindekwe (2020) that NDVI correlate with agricultural activities and productivity. Among land uses, the results of the vegetation indices showed that Agroforestry, Oil palm, Cocoa and Citrus fields recorded higher values compare to Maize field. Gurima and Prashant (2021) opined that vegetation index of forested areas are lower than those of other land uses especially annual crop land. However, Sentongo et al. (2017) and Khaple et al. (2021) reported that vegetation index values of forested area were higher than land cultivated for annual crops.

Eludoyin et al. (2017) and Uzoh (2021) described wet and dry seasons of Nigeria in such that the rainy (wet) season occur from April to October with moderate rainfall of 1500 to 2000 mm and average temperature of 28°C Results from this study showed that plant thrived well during rainy season across the land uses compared to the dry season that is characterized by high temperature

(average of 30⁰C) with little or no rainfall. Dry season last for 4-5 months in the rainforest belt of Nigeria. The results of the vegetation indices measured indicated that plants were stressed during dry season compare to rainy season which are supported by the reports of Trujillo et al. (2020) and Batunqwanayo et al (2020). Dry season is characterized by little or no rainfall and high soil and air temperatures. This condition further enhance soil evaporation (Agele, 2021, Adaeze et al., 2022).

Response of vegetation cover to weather variables

The dynamics of the vegetation cover under the land uses appeared to be influenced by seasonal weather and soil conditions. Duveiller et al. (2018) opined that climate variables are critical determinant of vegetation and land cover characteristics of ecosystems including agroecosystems. Results from this study showed the relationships among vegetation indices (NDVI, NDWI and SAVI) with temperature and rainfall for the years of study. NDVI response to temperature was weak and negative. It was observed that the higher the value of Temperature, the lower the value of NDVI. This result conforms with the findings of Ghebregabher et al. (2020) that values of NDVI decreased at high temperature. It was however observed that NDVI responded to rainfall with a strong relationship. This result confirmed the findings of Ghebregabher et al. (2020), that NDVI responds to rainfall trends than temperature. Wang et al. (2010) and Garai et al. (2022) also stated that rainfall has primary influence on NDVI resulting in strong relationships. Naif et al, (2020) showed in their findings how NDVI negatively correlated with temperature and positively correlated with precipitation.

NDWI does not only indicate vegetation cover but also to water content within the landscape (Jovanovic et al., 2014). Result from this study as shown on Figure 26a and b and Table showed NDWI responded to variation in rainfall more than NDVI, thereby indicating a better understanding of vegetation water status (Karamihalaki et al., 2016).The relations of NDWI with weather variables (temperature and rainfall) during rainy seasons showed in 2017, NDWI indicated a stronger relations with rainfall trend(good spread) despite the fact that 2019 had the highest total rainfall. It is therefore important to consider the amount and time spread of rainfall for each year. It was recorded that 2017 had good rainfall spread during rainy season more than other years of study. However, during the dry season, NDWI had strong relations with total rainfall and weak and negative relationship with temperature (Table 13). This result conformed to the findings of Amel et al. (2023) that NDWI is more sensitive to drought than NDVI. NDWI was described by Gu et al, (2007) describes NDWI indicate the more sensitive indicator of vegetation (plant) water content. It is therefore a very good proxy for plant response to water stress.

Conclusions

The vegetation indices (NDVI, NDWI and SAVI) indicated vegetation cover patterns, health and water contents differed among land use types, seasons and years as well as responses to weather variables (rainfall and temperature in particular). The results showed that vegetation of the land use types was healthier in 2018 compared to 2019 and 2017 during both rainy and dry seasons. NDWI complemented NDVI as tool to analyze vegetation health and responses to rainfall (water availability in the ecosystem) NDWI indicate vegetation interception of rainfall (soil water availability) for each land use and effects on vegetation cover water status. mong years of study, the vegetation of the land uses had more water content (received more rainfall) for 2017 compared with 2018 and 2019 during the rainy season while during the dry season of 2019, NDWI was highest compared to 2018 and 2017 due to high rainfall received towards the end of 2019.Soil Adjusted Vegetation Index (SAVI) corrected NDVI as indicator of canopy gaps (high soil brightness in areas where vegetative cover is sparse. Results of the vegetation indices showed that, permanent land uses recorded higher vegetation intensity compared to annual

(maize) crop land. Relationships among NDVI, NDWI and SAVI were very strong ($R^2=1$). This means SAVI is a right tool to check the efficacy of NDVI.

The biophysical findings from this study may advance capacities to cope with climate change challenges and ecosystem conservation. Information generated will find applications in the development of strategies for ecologically sound sustainable land use and management systems in policy formulation for mainstreaming climate adaptation and disaster risk reduction in the study area

References

- Adejuwon, J.O. and Ekanade, O. (1988) A Comparison of Soil Properties under Different Landuse Types in a part of the Nigerian Cocoa Belt. CATENA, 15, 319-331. [https://doi.org/10.1016/0341-8162\(88\)90054-9](https://doi.org/10.1016/0341-8162(88)90054-9)
- Agbeshie A.A., Abugre S., Atta-Darkwa T. and Awuah R. (2022). A Review of the Effects of Forest Fire on Soil Properties. Journal of Forestry Research 33, 1419-1441
- Agele, Samuel, Aiyelari, Peter, Famuwagun, Babadele&Oluwasola, Olufunke. 2016. Effects of Tractor Wheel Passes-induced Compaction and Organic Amendments on Soil Properties and Yield of Cowpea (*Vigna unguiculata* L. Warp) in an Alfisol of the Rainforest Zone of Nigeria. International Journal of Plant and Soil 13(4); 1-16
- AgotaHorel, EszterToth, Gyorgyi Gelybo, and Ilona Kasa (2015). Effect of Land Use and Management on Soil Hydraulic Properties. Open Geosciences 7(1). Doi:10.1515/geo-2015-0053
- Agoume, V. and A. M. Birang. (2009). Impact of Land-use Systems on Some Physical and Chemical Soil Properties of an Oxisol in the Humid Forest Zone of Southern Cameroon. Tropicultura, vol. 27: 15- 20, 2009.
- Akintokun P.O. and Owoeye O.O. (2011). Effect of Land-Use Pattern on Phosphorus and Potassium Fixation and Maize Performance. Journal of Agric. Science and Environment. Vol.11, No. 1. Doi: <https://doi.org/10.51406/jagse.v11i1.1309>.
- Alemayehu K. and Sheleme B. (2013). Effect of Different Land Use Systems on Selected Soil Properties in South Ethiopia J. Soil Sci. Environ. Manag. Vol. 4(5), pp. 100-107
- AlemayehuKiflu* and ShelemeBeyene (2013). Effects of different land use systems on selected soil properties in South Ethiopia J soil sci environ mgt.Vol. 4(5), pp. 100-107, DOI 10.5897/JSSEM12.20
- Amanuel, Yimer, F. and Karlton, E. (2018) Soil Organic Carbon Variation in Relation to Land Use Changes: The Case of Birr Watershed, Upper Blue Nile River Basin, Ethiopia. Journal of Ecology and Environment, 42, Article No. 16. <https://doi.org/10.1186/s41610-018-0076-1>
- Amanze C.T., Oguike P.C. Eneje R.C. (2017). Land Use Effects on Some Physico-Chemical Properties of Utisol at Ndume-Ibeku, Southeastern Nigeria. Int. J. Sci. Res. 7(9) (2017).

Anikwe, M. A. N and D. C. Eze. Effect of Indigenous Legumes on Soil Properties and Yield of Maize on an Ultisol in Southeastern Nigeria. *Nigerian Journal of Soil Science*, 20 (2), 47 -53, 2010.

Assefa, D., Rewald, B., Sandén, H., Rosinger, C., Abiyu, A., Yitaferu, B. and Godbold, D.L. (2017) Deforestation and Land Use Strongly Effect Soil Organic Carbon and Nitrogen Stock in Northwest Ethiopia. *CATENA*, 153, 89-99. <https://doi.org/10.1016/j.catena.2017.02.003>

Awoonor J.K., Adiyah F., Dogbey B.F. (2022). Land-Use Change on Soil C and N Stocks in the Humid Savannah Agro-Ecological Zone of Ghana. Doi.10.4236/jep.2022.131003

Baker D.F., Law R.M., Gurney K.R., Rayner P., Perlin P. (2006). Transcom³ Inversion Intercomparison: Impact of Transport Model Errors on the International Variability of Regional CO₂ Fluxes, 1988-2003. *Global Biogeochem Cycles* 20: GB1002, Doi:10.1029/2004GB002439

Bationo, A., Kihara, J., Vanlauwe, B., Waswa, B. and Kimetu, J. (2007) Soil Organic Carbon Dynamics, Functions and Management in West African Agro-Ecosystems. *Agricultural Systems*, 94, 13-25. <https://doi.org/10.1016/j.agry.2005.08.011>

Bekunda, M., Sanginga, N., and Woomer, P.L. (2010) Chapter Four—Restoring Soil Fertility in Sub-Sahara Africa. *Advances in Agronomy*, 108, 183-236. [https://doi.org/10.1016/S0065-2113\(10\)08004-1](https://doi.org/10.1016/S0065-2113(10)08004-1)

Bessah, E., Bala, A., Agodzo, S.K. and Okhimamhe, A.A. (2016) Dynamics of Soil Organic Carbon Stocks in the Guinea Savanna and Transition Agro-Ecology under Different Land-Use Systems in Ghana. *Cogent Geoscience*, 2, Article ID: 1140319. <https://doi.org/10.1080/23312041.2016.1140319>

Bhattacharyya, R., S.C. Pandey, J.K. Bisht, J.C. Bhatt, H.S. Gupta, M.D. Tuti, D. Mahanta, B.L. Mina, R.D. Singh, S. Chandra, A.K. Srivastva, and S. Kundu. (2013). Tillage and irrigation effects on soil aggregation and carbon pools in the Indian sub-Himalayas. *Agron. J.* 105:101–112. doi:10.2134/agronj2012.0223

Biernbaun John (2012). *Organic Matters: Feeding the Soil and Building Soil Quality*. Department out of Horticulture, Michigan State University. *Organic Matters*, March, 2012, Pages 1-7.

Bizuhoraho Theobald, Kayiranga Alexis, Manirakiza Noel, Mourad A. Khaldoun (2018). The Effect of Land Use Systems on Soil Properties; A case Study from Rwanda. *Sustainable Agriculture Research* 7(2): 30-40. Doi:10.5539/sar.v7n2p30

Blake, G.R. and Hartge, K.H. (1986). Bulk Density Methods of Soil Analysis Part 1. Physical and Mineralogical Methods 5, 363-375

Bouyoucos, G.J. (1962) Hydrometer Method Improved for Making Particle Size Analyses of Soils 1. *Agronomy Journal*, 54, 464-465. <https://doi.org/10.2134/agronj1962.00021962005400050028x>

Brady, N.C. and Weil, R.R. (1999) *The Nature and Properties of Soils*. 12th Edition, Prentice Hall Publishers, London, 1-9, 453-536, 727, 739-740.

Bremner, J.M., and Mulvaney, C.S. (1982). Nitrogen-Total. In: Page A.L., Miller, R.H., and Keeney, D.R. (eds). *Method of Soil Analysis. Part 2: Chemical and Microbial Properties* 2nd ed. Agronomy No 9 American Society of Agronomy. Madison, Wisconsin, USA. 595-624

Brumer A.C., Park S.J., Ruecker G.R., Dikan R., Vlek P.L.G. (2004). Catenary Soil Development Influencing Erosion Susceptibility along a Hillslope in Uganda. *Catena* Volume 58. Pp. 1-22

Chaudhuri S., Pena-Yewtukhiw E., McDonald L.M., Skousen J. and Sperow M. (2011). Land Use Effects on Sample Size Requirements for Soil Organic Carbon Stocks Estimations. *Soil Science* 176 (2), 110-114.

Chidowe O.A., Blessing A.D., Olaleken O.J., Yetunde O.E., Mary C.N. (2019). Tillage *Desmodium Intortum* Fertilizer Rates for Carbon Stock, Soil Quality and Grain Yield in Northern Guinea Savanna of Nigeria. *American Journal of Climate Change* 8(2). 325-341

Chinese J. Appl. Ecol. 20:1112–1117.

Delelegn, Y.T., Purahong, W., Blazevic, A. Yitaferu, B, Wubet, T, Goransson, H and Godbold, DL. (2017). Changes in land use alter soil quality and aggregate stability in the highlands of northern Ethiopia. *Sci Rep* 7, 13602 (2017). <https://doi.org/10.1038/s41598-017-14128-y> .

Detwiler, R.P. (1986) *Land Use Change and the Global Carbon Cycle: The Role of Tropical Soils*. *Biogeochemistry*, 2, 67-93. <https://doi.org/10.1007/BF02186966>

Don, A., Schumacher, J., and Freibauer, A. (2011) Impact of Tropical Land-Use Change on Soil Organic Carbon Stocks—A Meta-Analysis. *Global Change Biology*, 17, 1658-1670. <https://doi.org/10.1111/j.1365-2486.2010.02336.x>

- Enisan G. and Adeyemi A.G. (2013). Effect of Agricultural Practices on Residential Land Use in Ipinsa Town, Akure, Nigeria. *International Journal of Education and Research* vol. 1 No. 7
- FAO (2015). *Coping with Climate Change-The Roles of Genetic Resources*. FAO Rome
- FAO (2020). *World Food and Agriculture-Statistical Year book*
- FAO and ITPS (2021) *Recarbonizing Global Soils—A Technical Manual of Recommended Management Practices: Volume 2—Hot Spots and Bright Spots of Soil Organic Carbon*. FAO, Rome.
- Fentie S.F., Jembere K., Fekadu E. and Wasie D. (2020). Land Use and Land Cover Dynamics and Properties of Soil under Different Land Uses in the Tejibara Watershop Ethiopia *ScientificWorldJournal*: doi:10.1155/2020/1479460
- Fikadu G., Abdul A., Mulugeta L., Aramde F. (2013). Effect of Different Land Uses on Soil Physical and Chemical Properties in Wondo Genet Area, Ethiopia. *N.Y. Sci. J.* 2013; 2012:5(11)
- Food and Agriculture Organization of the United Nations (FAO) (2013) *Climate-Smart Agriculture Sourcebook*.
<https://www.fao.org/climate-smart-agriculture-sourcebook>
- Fujisaki, K., Perrin, A.-S., Desjardins, T., Bernoux, M., Balbino, L.C. and Brossard, M. (2015) From Forest to Cropland and Pasture Systems: A Critical Review of Soil Organic Carbon Stocks Changes in Amazonia. *Global Change Biology*, 21, 2773-2786. <https://doi.org/10.1111/gcb.12906>
- Getahun Haile, Mulugeta Lemenhi, Fisseha Itanna and Feyera Senbeta (2014). Impact of Land Uses Changes on Soil Fertility, Carbon and Nitrogen Stock under Smallholder Farmers in Central Highlands of Ethiopia: Implication for Sustainable Agricultural Landscape Management around Butajira Area. *New York Science Journal* 7 (2).
- Girmay, G., Singh, B. R., Mitiku, H., Borresen, T., & Lal, R. (2008). Carbon Stocks in Ethiopian Soils in Relation to Land Use and Soil Management. *Land Degradation and Development*, 19, 351-367. <http://dx.doi.org/10.1002/ldr.844>
- Graham R. and O'Green A. (2010). Soil Mineralogy trends in California Landscape. DOI: 10.1016/J.Geoderma.2009.05.018
- Grüneberg, E., Ziche, D. and Wellbrock, N. (2014) Organic Carbon Stocks and Sequestration Rates of Forest Soils in Germany. *Global Change Biology*, 20, 2644-2662. <https://doi.org/10.1111/gcb.12558>
- Guizani M., Fujii T., Hijikata N., Funamizu N. (2018). Soil Fertilization with Human Urine and Salinization Risks. *Euro-Mediterr J Environ Integr.* <https://doi.org/10.1007/s41207-016-0010>

- Guo, L.B. and Gifford, R.M. (2002) Soil Carbon Stocks and Land Use Change: A Meta-Analysis. *Global Change Biology*, 8, 345-360. <https://doi.org/10.1046/j.1354-1013.2002.00486.x>
- Haddaway N.E., Hedlund K., Jackson L.E., Katterer T., Lugato E., Thomsen I.K., Jorgensen H.B. and Isberg P. (2017). How does Tillage Intensity Affect Soil Organic Carbon? A System Review *Environmental Evidence* 6, Article no: 30
- Hassan M.K., Sanchez B., and Yu J. (2011). Financial Development and Economic Growth: New Evidence from Panel Data. *The Quarterly Review of Economics and Finance* 51(1): 88-104.
Doi:10.1016/j.qref.2010.09.001
- Hazelton, P.A. and Murphy, B.W. (2007) *Interpreting Soil Test Results: What Do All the Numbers Mean?* CSIRO Publishing, Australia, 1-152. <https://doi.org/10.1071/9780643094680>
- Hunke P., Mueller E.M., Schroder B and Zeilhofer P. (2015). The Brazilian Cerrado: Assessment of Water and Soil Degradation in Catchments under Intensive Agricultural Use. *Ecohydrology* 8, 1154-1180. Doi: 10.1002/eco.1573.
- Igbinador Richard .O. (2023). Physiological Studies of Genetically-modified and Non-modified Selected Starter Cultures of Yeasts Obtained from Cocoa (*Theobroma CacaoL.*) Pod Husk Biomass. *Afr. J. Biotechnol.* Doi: 10.5897/AJB
- IPCC (2013). *Climate Change 2013. The Physical Science Basis*
- Islam, K.R., and Weil R.R., (1998). A Rapid Microwave Digestion Method for Colorimetric Measurement of Soil Organic Carbon. *Comm. Soil Sci Plant Anal.* 29: 2269-2284
- Jackson, M.L (1958). *Soil Chemical Analysis*. Prentice-Hall INC., Englewood Cliffs, NJ, 498 p.
- James J.N, Gross C.D., Pranjal D., Myerst., Santos F., Bernardi R., de Faria M.F., Guerrini I.A., Harrison R., Butman D. (2019). Land Use Change Alters the Radiocarbon Age and Composition of Soil and Water-Soluble Organic Matter in Brazilian Carrade. Vol. 345, Pp 38-50
- Jiang Y., G. Zhang, D. Zhou, Y. Qin and W.J. Liang. (2002). Profile Distribution of Micronutrients in an Aquic Brown Soil as Affected by Land Use. *Journ. Plant, Soil and Environ.* 155(11): 468 – 476, 2002.
- Jun Chen, Yichun Du, Wei Zhu, Xin Pang and Zhen Wang (2022). Effects of Organic Materials on Soil Bacterial Community Structure in Long-term Continuous Cropping of Tomato in Greenhouse. *Open Life Sci*, 17(1): 381-392. Doi: 10.1515/biol-2022-0048
- Kakare J.M., George L.M., Majalina M., Albert K.E., Menya M. (2015). Effect of Mulching on Soil Hydro-Physical Properties in Kibaale Sub-catchment, South Central Uganda.
<https://nruuncst.go.ug/handle/123456789/5615>

- Karlen, D. L., C.A. Ditzler and A.S. Andrews. 2003 Soil Quality: Why and How? *Geoderma*, 114:145 – 156, 2003.
- Katerina Zajicova and Tomas Chuman (2019). Effect of Land Use on Soil Chemical Properties after 190 Years of Forest to Agricultural Land Conversion. *Soil and Water Research*, 14, (3): 121-131.
[Doi.org/10.17221/5/2018-SWR](https://doi.org/10.17221/5/2018-SWR)
- Ketema, H. and Yimer, F. (2014). Soil property Variation under Agroforestry Based Conservation Tillage and Maize Based Conventional Tillage in Southern Ethiopia. *Soil and Tillage Research* 14 (1-3): 25-31. DOI: 10.1016/j.still.2014.03.011
- Kizilkaya R. and Dengiz .O. (2010). Variation of Land Use and Land Cover Effects on Some Soil Physico-chemical Characteristics and Soil Enzyme Activity. *Zemdirbyste-Agriculture*, vol. 97, No. 2, p. 15-24.
- Lal R. (2012). Climate Change and Soil Degredation Mitigation by Sustainable Management of Soils and other Natural Resources. *Agricultural Research* 1, 199-212
- Lal, R., Negassa, W. and Lorenz, K. (2015) Carbon Sequestration in Soil. *Current Opinion in Environmental Sustainability*, 15, 79-86. <https://doi.org/10.1016/j.cosust.2015.09.002>
- Liu, N. Li, Y. Cong, P. Wang, J. Guo, W. Pang, H. Zhang, L. (2021). Depth of straw incorporation significantly alters crop yield, soil organic carbon and total nitrogen in the North China Plain Soil & *Tillage Research*, 205, Article 104772
- Mandel U. and Meyer B.C. (2012). Adaptation and Functional Water Management through Land Use Change. *Ecological Indicator* 22, 1-3.
- Moura J.B.D., Ribeiro D.A., Lopes Filho L.C., Souza R.F.D. and Furquim L.C. (2017). Arbuscular Mycorrhizas in Sugarcane under Planting Systems and Sources of Nitrogen. *Sci. Agrar.* 18, 20-29. Doi: 10.5380/rsa.v18i3.50722.
- Murty, D., M. U. F. Kirschbaum, R. E. Mcmurtrie, H. Mcgilvray. (2002). Does Conversion of Forest to Agricultural Land Change Soil Carbon and Nitrogen? A Review of the Literature. *Global Change Biology*, 8 (2):105-123, 2002.
- Nakho N. and Dkhar M.S. (2010). Impact of Organic and Inorganic Fertilizer on Microbial Populations and Biomass Carbon in Paddy Field Soil. *Journal of Agronomy* Vol. 9(3), page, 102-110.
- Negasa et al., 2017. Variation in soil properties under different land use types managed by smallholder farmers along the toposequence in southern Ethiopia
- Nigussie, Z., Tsunekawa, A., Haregeweyn, N., Adgo, E., Nohmi, M., Tsubo, M., et al. (2017) Factors Influencing Small-Scale Farmers' Adoption of Sustainable Land Management Technologies in North-Western Ethiopia. *Land Use Policy*, 67, 57-64.
<https://doi.org/10.1016/j.landusepol.2017.05.024>

- Nnaji G., Asadu C.L.A. and Mbagwu J. (2002). Evaluation of Physico-chemical Properties of Soil under Selected Agricultural Land Utilization Types. *Journal of Tropical Agriculture, Food, Environment and Extension* 3 (1), 27-33.
- Nwite J.N. (2015). Effect of Different Urine Sources on Soil Chemical Properties and Maize Yield in Abakaliki, Southeastern Nigeria. *IJAAR* 3. Pp 31-36
- Nyawira S.S., Hartman M.D., Nguyen T.H., Margenot A.J., Kihara J., Paul B.K., Williams S., Bolo P. and Sommer R. (2021). Simulating Soil Organic Carbon in Maize-based Systems under Improved Agronomic Management in Western Kenya. *Soil and Tillage Research* 211, 105000
- OECD (2016). Land Cover and Land Use Indicators. <https://doi.org/10.1787/22260935>
- Ogbona P.C., Nzegbule E.C. and Okorie P.E. (2018). Seasonal Variation of Soil Chemical Characteristics at Akwuke Long Wall Underground Mined Site, Nigeria. *J. Appl. Sci. Environ. Manage.* 22 (8), 1303-1310.
- Oguike P.C. and Onwuka B.M. (2018). Moisture Characteristics of Soils of Different Land Use Systems in UbakalaUmuahia, Abia State, Nigeria. *IJSRP*. 8(4). (ISSN 2250-3153).
- Oguike, P. C. and J.S.C. Mbagwu. (2009). Variations in Some Physical Properties and Organic Matter Content of Soils of Coastal Plain Sand Under Different Land Use Types. *World J. Agric. Science*. 5: 63-69, 2009.
- Oladoye A.O. and Adedire M.O. (2013). Carbon Stock Estimate under different Land-Use in the Federal University of Agriculture, Abeokuta, Nigeria. *Ife Journal of Science* 15(3)
- Olsen S.R., Cole, C.V., Watanabe, F.S., Dean L.A., (1954). Estimation of Available Phosphorous in Soil by Extraction with Sodium Bi-carbonate U.S Dep. Agric. Cir. 939. USDA, Washington D.C
- Olubanjo O.O. and Ayoola O.S. (2020). Assessment of Spatial Variability of Physico-chemical Properties of Soil at Crop, Soil and Pest Management Research Farm FUTA. Doi: 10.47721/ARJEE20200301020
- Omotade I.F. and Alatis M.O. (2017). Spatial Variability of Soil Physical and Chemical Properties in Akure, South Western Nigeria. *Global Journal of Science Frontier Research: Agriculture and Veterinary* Vol.17
- Onwudike, S. U, E. U. Onweremadu, E. E. Ihem, L.C. Agim, A.F. Osi, S.K. Osuaku, and P.O. Azuh. (2016). Evaluation of Micronutrient Status of Soils under Three Land Use Types in Oyigbo, River State, Nigeria. *FUTO Journal Series (FUTOJNLS)*, 2(1): 32 – 40.
- Onwudike, S. U, E.E. Ihem, I.F. Irokwe and G. Onwuso.(2015). Variability in the Physico-chemical Properties of Soils of Similar Lithology in Three Land Use Types in AhiazuMbaise, Imo State Nigeria. *Journal of Agriculture and Crops*, 1(3): 38-43, 2015.
- Opara S. (2011). Exploring Lifeline in Small Scale Farming NBF Topics.
- Panwar N.R., Ramesh P., Singh A.B. and Ramana S. (2010). Influence of Organic, Chemical and Integrated Management Practices on Soil Nutrient Status Under Semi-arid Tropical Conditions in Central India. *Communications in Soil Science and Plant Analysis*.41, 1073-1083. [Dop.org/10:1080/00103621003687166](https://doi.org/10.1080/00103621003687166).

Penman, J., Gytarsky, M., Hiraishi, T., Krug, T., Kruger, D., Pipatti, R., et al. (2003) Good Practice Guidance for Land Use, Land-Use Change and Forestry. IPCC National Greenhouse Gas Inventories Programme and Institute for Global Environmental Strategies, Kanagawa. INCOMPLETE

Pereira G.A.C., Primo A.A., Meneses A.J.G., Araiyo M.D.M., PompeuGuedes and de Souza (2020). Soil Fertility and Nutritional Status of Elephant Grass Fertilized with Organic Compost from Small Ruminant Production and Slaughter Systems. Rev. Bras Cienc Solo 2020: 44: e0200031

Poepflau, C., Vos, C. and Don, A. (2016) Soil Organic Carbon Stocks are Systematically Overestimated by Misuse of the Parameters Bulk Density and Rock Fragment Content. Soil Discussions, 3, 61-66. <https://doi.org/10.5194/soil-3-61-2017>

Poepflau, C., Vos, C. and Don, A. (2016) Soil Organic Carbon Stocks are Systematically Overestimated by Misuse of the Parameters Bulk Density and Rock Fragment Content. Soil Discussions, 3, 61-66. <https://doi.org/10.5194/soil-3-61-2017>

Poepflau, C., Vos, C. and Don, A. (2016) Soil Organic Carbon Stocks are Systematically Overestimated by Misuse of the Parameters Bulk Density and Rock Fragment Content. Soil Discussions, 3, 61-66. <https://doi.org/10.5194/soil-3-61-2017>

Puget P. and Drinkwater L.E. (2001). Short-Term Dynamics of Root- and Short-Derived Carbon from a Leguminous Green Manure. Soil Science Society of America Journal. Vol. 65. Pages 771-779.

Pujia Yu, Qiang Li, HongtaoJia, Guangdi Li, Wei Zheng, Xiangjin Shen, Baba Diabate, and DaoweiZhou 2014. Effect of Cultivation on Dynamics of Organic and Inorganic Carbon Stocks in Songnen Plain Agronomy, Soils & Environmental Quality Journal ·

Romkens P.F.A.M., Van der Plicht, J., and Hassink, J. (1999). Soil Organic Matter Dynamics after the Conversion of Arable Land to Pasture. Biology and Fertility of Soil. 28: 227-284

Ryan C.B., Danny J.E., Kenneth W.T., Leslie M.R. (2018). A Global Meta-Analysis of Grazing Impacts on Soil Health Indicators. Journal Environmental Quality 47(4): 758-765

Sainju U.M., Stevens W.B., Jabro J.D., (2010). Land Use and Management Practices Impact on Plant Biomass Carbon and Soil Carbon Dioxide Emission. Soil Sci. Soc. Am. J. 74: 16131622

Samson, M. Chantigny, M.H. Vanasse, A. Menasseri-Aubry, S. Royer, I. Angers, D.A. (2021). Response of subsurface C and N stocks dominates the whole-soil profile response to agricultural management practices in a cool, humid climate Agriculture, Ecosystems & Environment, 320, Article 107590

- Sarawathy, R., S. Suganya, P. Singaram. (2007). Environmental Impact of Nitrogen Fertilization in Tea Ecosystem. *Journal of Environmental Biology*, 28:779 -788, 2007.
- Seifu W, Elias, e. Gebresamuel, G and Khanal, S. (2021). Impact of land use type and altitudinal gradient on topsoil organic carbon and nitrogen stocks in the semi-arid watershed of northern Ethiopia. *Heliyon* 7(4), e06770
- Senjobi, B. A. and A.O. Ogunkunle. (2011). Effect of Different Land Use Types and their Implications on Land Degradation and Productivity in Ogun State, Nigeria. *Journal of Agricultural Biotechnology and Sustainable Development*, Vol. 3(1): 7-18, 2011.
- Shepherd, G., R.J. Bureh and P. J. Gregory (2000). Land Use Affects the Distribution of Soil Inorganic Nitrogen in Smallholder Production Systems in Kenya. *Biology and Fertility of Soils*.31: 348- 355.
- Shi, Y., F. Baumann, Y. Ma, C. Song, P. Kuhn, T. Scholten, and J.S. He. (2012). Organic and inorganic carbon in the topsoil of the Mongolian and Tibetan grassland: Pattern, control and implications. *Biogeosciences Discuss.* 9:1869–1898. doi:10.5194/bgd-9-1869-2012
- Six J., Conant, R.T., Paul, E.A., and Paustian, K. (2002). Stabilization mechanism of Soil Organic Matter; Implication for C-Saturation of Soils. *Plant and Soil*. 24: 155-176
- Thomas G.W (1996). Soil pH and Soil Acidity in Sparks, D.L, et al., (Eds), *Methods of Soil Analysis: Part 3 Chemical Methods*, Soil Science Society of America, Inc., Madison. 475-490.
- Toru, T. and Kibret, K. (2019) Carbon Stock under Major Land Use/Land Cover Types of Hades Sub-Watershed, Eastern Ethiopia. *Carbon Balance and Management*, 14, Article No. 7. <https://doi.org/10.1186/s13021-019-0122-z>
- Tsozué, D., Nghonda, J.P., Tematio, P. and DjakbaBasga, S.: Changes in soil properties and soil organic carbon stocks along an elevation gradient at Mount Bambouto, Central Africa. *Catena*, 175, 251-262, <https://doi.org/10.1016/j.catena.2018.12.028>, 2019.
- Tsui, C-C, Chen-Chi Tsai, C-C. and Zueng-Sang Chen, Z-S (2013). Soil organic carbon stocks in relation to elevation gradients in volcanic ash soils of Taiwan. *Geoderma* 209–210. 119–127. <http://dx.doi.org/10.1016/j.geoderma.2013.06.013>
- Tully, K. and Ryals, R. (2017) Nutrient Cycling in Agroecosystems: Balancing Food and Environmental Objectives. *Agroecology and Sustainable Food Systems*, 41, 761-798. <https://doi.org/10.1080/21683565.2017.1336149>
- Ufot U.O., Iren, O.B and ChikereNjoku C.U. (2016). Effect of Land Use on Soil Physical and Chemical Properties in Akokwa Area of Imo State, Nigeria. *Int. J. Life Sci. Scienti. Res.*, 2(3): -273-278

- Vos, C, Don, A. Hobbey, EU. Prietz, R. Heidkamp, A and Freibauer, A. 2019 Factors controlling the variation in organic carbon stocks in agricultural soils of Germany European Journal of Soil Science. 70, 550-564
- Walkley, A.J. and Black, I.A. (1934). Estimation of Soil Organic Carbon by the Chromic Acid Titration Method. Soil Sci. 37, 29-38.
- Wang Q.J., Lu C.Y., Li H.w., He J., Sarker K.K., Rasaily R.G., Liang Z.H., Qiao X.D., Hui L. and Mchugh A.D.J. (2017). The Effect of No-tillage with Subsoiling on Soil Properties and Maize Yield: 12-Year Experiment on Alkaline Soils of Northeast China, Soil Till. Res., 137, 43-49.
<https://doi.org/10.1016/j.still.2013.11.006>
- White J.G., Lindbo D.L., Hardy D., Isreal D.W., Osmond R.O. and Walters R. (2017). Mineralization Plant Availability, and Water Quality Consequences of Nitrogen and Phosphorus in Land-Applied Municipal Biosolids WRRI, Report No. 432.
- World Food and Agriculture-Statistical Yearbook (2020)
- Yifru A.T. and Taye B. (2011). Effect of Land Use on Soil Organic Carbon and Nitrogen in Soil of Bale, SouthEastern Ethiopia. Tropical and Subtropical Agroeco-system, 14; 229-235
- Yihnew G.S., and Getachew A. (2013). Effects of Different Land Use Systems on Selected Physicochemical Properties of Soil in Northwestern Ethiopia. Journal of Agric. Sci 5(4). DOI: 10.5539/Jas.v5n4p112
- Yimer F., Ledin S., Abdelkadir A. (2008). Concentrations of Exchangeable Bases and Cation Exchange Capacity in Soil of Cropland, Grazing and Forest in the Bale Mountains, Ethiopia. Forest Ecology and Management Vol. 256. Pp. 1298-1302. <https://doi.org/10.1016/j.foreco.2008.06.047>
- Yimer F., Messing I., Ledin S., and Abdelkadir A. (2008). Effects of Different Land Use Types on Infiltration Capacity in a Catchment in the Highland of Ethiopia. Soil Use Management 24(4): 344-349. DOI: 10.1111/j.1475-1475-2743.2008.00182.x
- Young F.J and Hammer R.D. (2000). Soil-Landform Relationships on a Loess-Mantled Upland Landscape in Missouri. Agric. Expert. Stn. Journal Ser. No. 12514. <https://doi.org/10.2136/sssaj200.6441443x>
- Young F.J., and Hammer, R.D. (2000). Soil-Landform Relationships on a Loess-Mantled Upland Landscape in Missouri. Agric. Exper. Stn. Journal Ser. No. 12514. <https://doi.org/10.2136/sssaj2000.6441443x>
- Yu, P Li, Q. Jia, H. Li, G. Zheng, W. Shen, X. Diabate, B and Zhou, D. 2014. Effect of Cultivation on Dynamics of Organic and Inorganic Carbon Stocks in Songnen Plain. Agronomy, Soils & Environmental Quality 106 (5)
- Zeng R., Wei Y., Huang J. Chen X., Cai C. (2021). Soil Organic Carbon Stock and Fractional Distribution across Central-South China. International Soil and Water Conservation Research. Vol. 9. Pp. 620-630.

Table 1. Sentinel-2 Band Information

Band	Resolution	Central Wavelength	Description
B1	60 m	443 nm	Ultra-blue (Coastal and Aerosol)
B2	10 m	490 nm	Blue
B3	10 m	560 nm	Green
B4	10 m	665 nm	Red
B5	20 m	705 nm	Visible and Near Infrared (VNIR)
B6	20 m	740 nm	Visible and Near Infrared (VNIR)
B7	20 m	783 nm	Visible and Near Infrared (VNIR)
B8	10 m	842 nm	Near Infrared (NIR)
B8a	20 m	865 nm	Visible and Near Infrared (VNIR)
B9	60 m	940 nm	Short Wave Infrared (SWIR)
B10	60 m	1375 nm	Short Wave Infrared (SWIR)
B11	20 m	1610 nm	Short Wave Infrared (SWIR)
B12	20 m	2190 nm	Short Wave Infrared (SWIR)

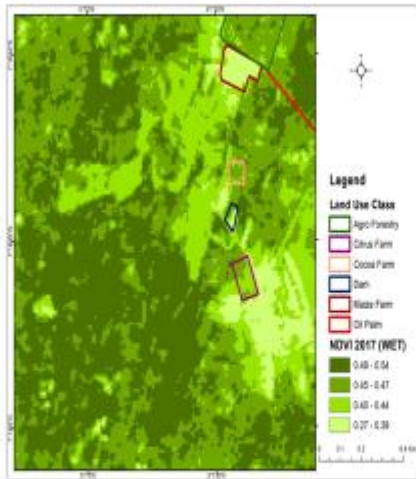


Plate 1a: Normalized Difference Vegetation Index (NDVI) map, rainy season 2017

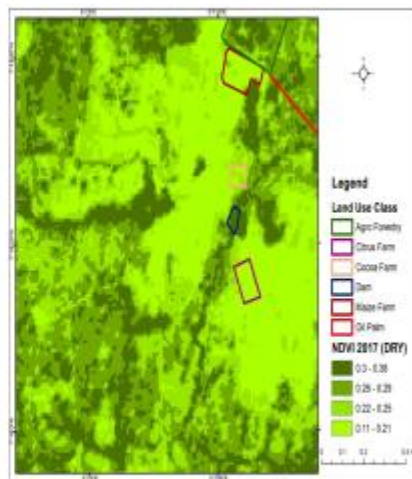


Plate 1b. Normalized Difference Vegetation Index (NDVI) map dry season 2017

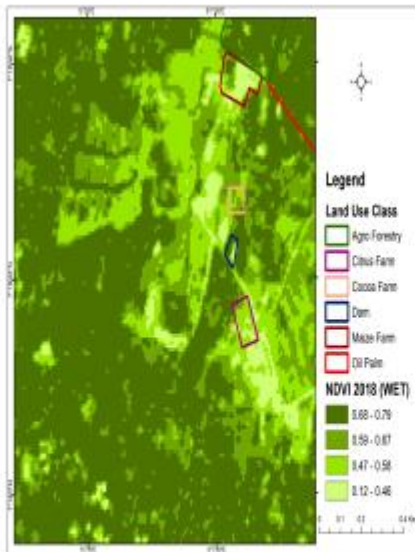


Plate 2a. Normalized Difference Vegetation Index (NDVI) Map rainy season 2018

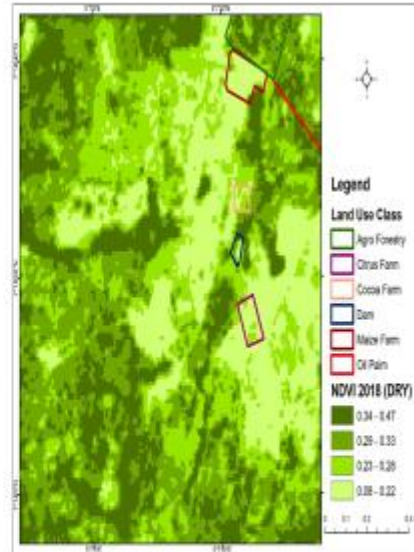


Plate 2b. Normalized Difference Vegetation Index (NDVI) map dry season 2018

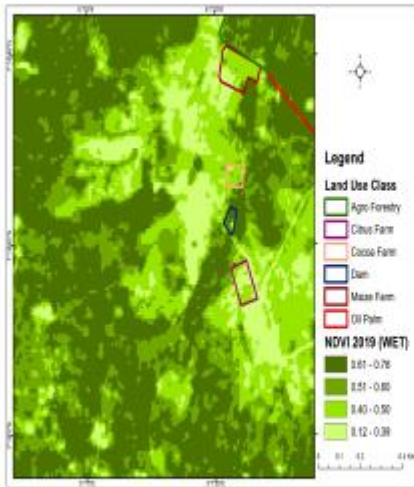


Plate 3a. Normalized Difference Vegetation Index (NDVI) map rainy season 2019

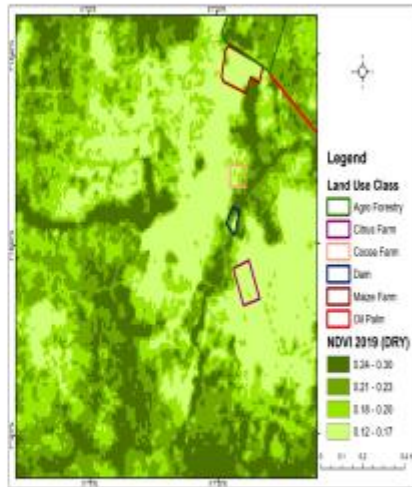


Plate 3b. Normalized Difference Vegetation Index (NDVI) map dry season 2019

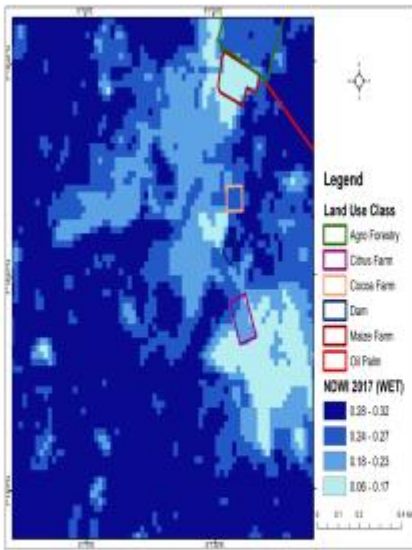


Plate 4a. Normalized Difference Water Indices (NDWI) map rainy season 2017

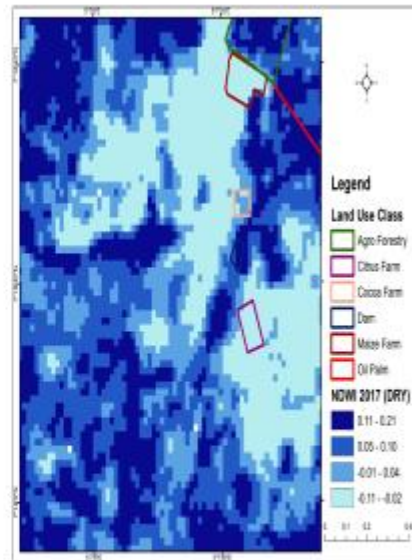


Plate 4b.: Normalized Difference Water Indices (NDWI) map dry season 2017

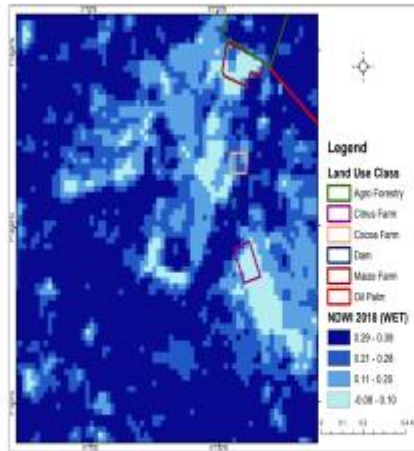


Plate 5a. Normalized Difference Water Indices (NDWI) map rainy season 2018

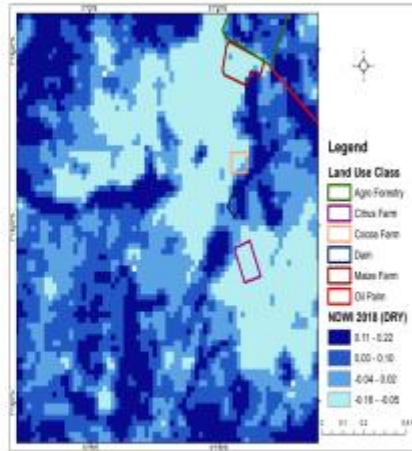
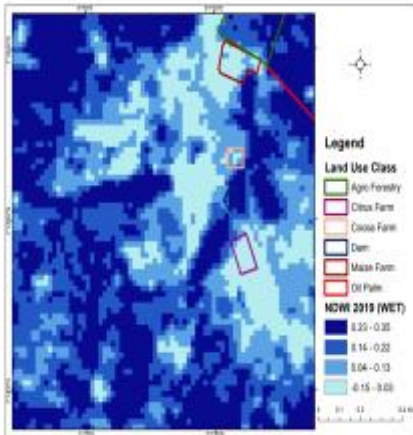


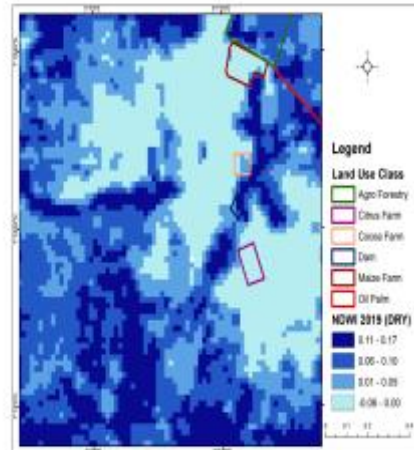
Plate 5b. Normalized Difference Water Indices (NDWI) map dry season 2018

*

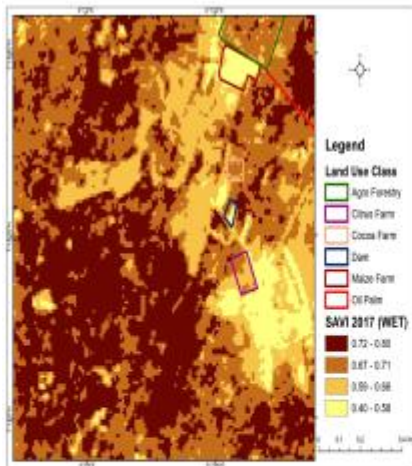
UNDA



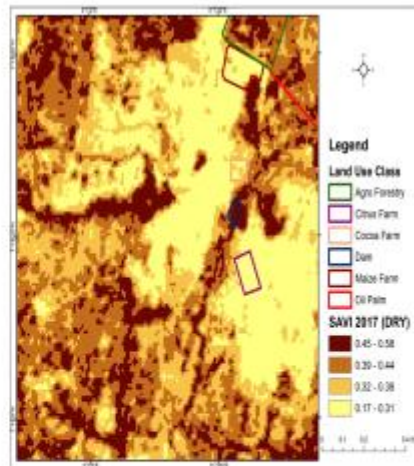
- Plate 6a. Normalized Difference Water Indices (NDWI) map rainy season 2019



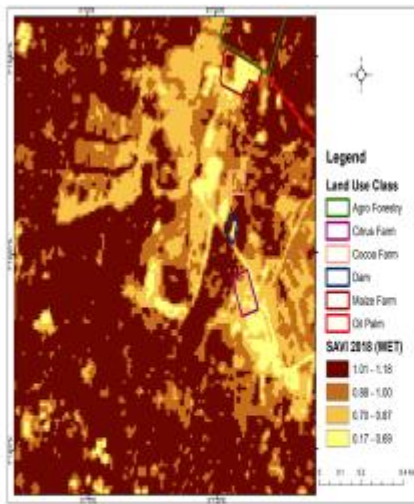
- Plate 6b. Normalized Difference Water Indices (NDWI) map dry season 2019



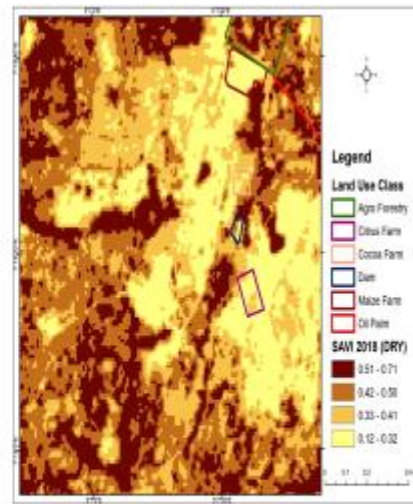
- Plate 7a. Soil Adjusted Vegetation Index (SAVI) map 2017 rainy season



- Plate 7b. Soil Adjusted Vegetation Index (SAVI) Map 2017 dry season



• Plate 8a. Soil Adjusted Vegetation Index (SAVI) map 2018 rainy season



• Plate 8b. Soil Adjusted Vegetation Index (SAVI) map 2018 dry season

Table 2. Summary of land use types, vegetation indices and seasons during period of study

	Years	2017		2018		2019	
Veg. Indices	Season	Land uses					
		Permanent Land uses	Cultivated Land uses	Permanent Land uses	Cultivated Land uses	Permanent Land uses	Cultivated Land uses
NDVI	Rainy	0.4541	0.3030	0.6073	0.3808	0.5156	0.4929
	Dry	0.2352	0.1875	0.2529	0.1594	0.1912	0.1590
NDWI	Rainy	0.2492	0.0630	0.2181	-0.0298	0.1228	0.0209
	Dry	0.0413	-0.0850	0.0037	-0.1217	0.0340	-0.0301
SAVI	Rainy	0.6811	0.4545	0.9108	0.5712	0.7733	0.7393
	Dry	0.3529	0.2812	0.3793	0.2390	0.2867	0.2385



• Fig.1a. NDVI intensity of vegetation cover (rainy season)

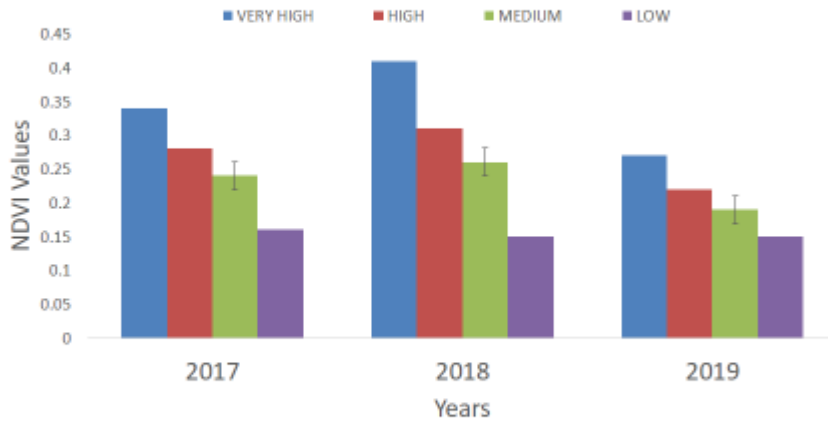


Fig. 1b. NDVI Intensity of vegetation cover (dry season)

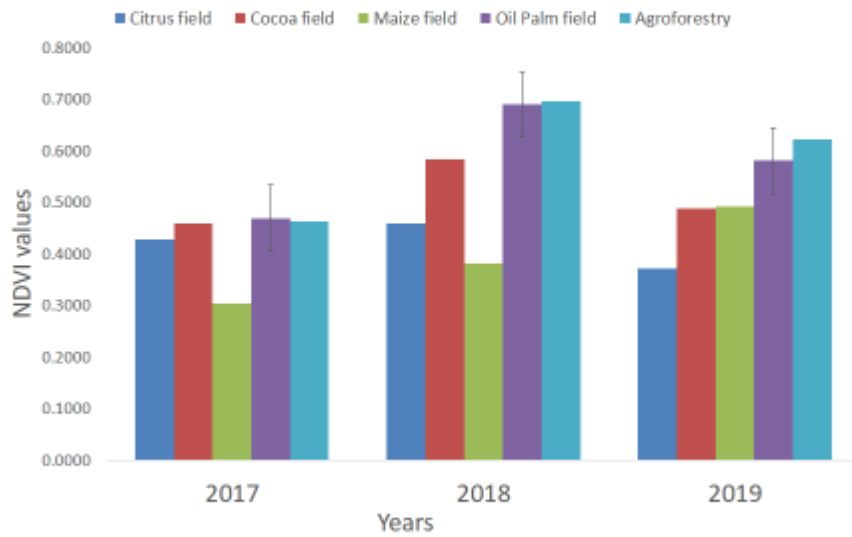


Fig. 1c. NDVI of land use vegetation cover (rainy seasons)

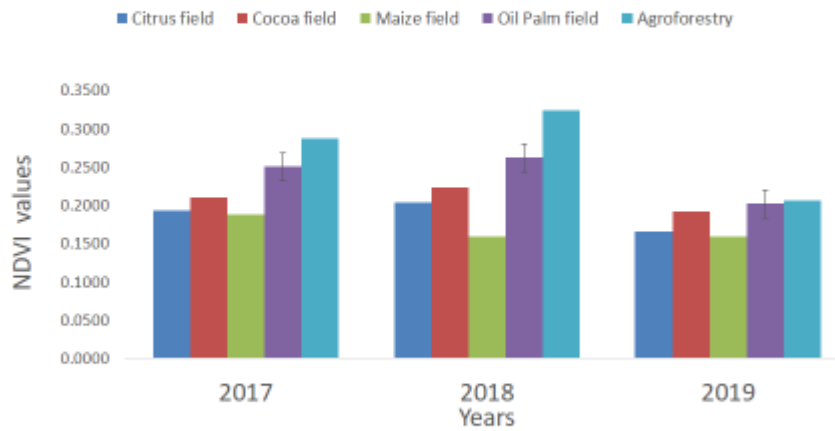


Fig. 1d. NDVI of land use vegetation cover (dry season)

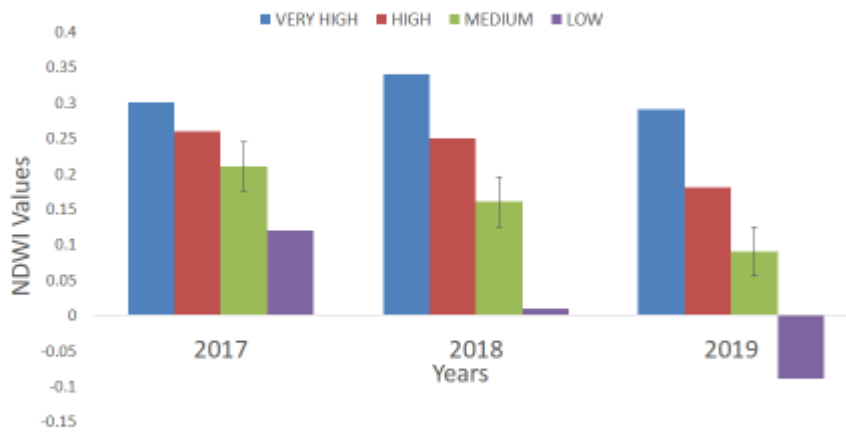


Fig. 2a. NDWI intensity of vegetation cover (rainy season)



Fig. 2b. NDWI intensity of vegetation cover (dry season)

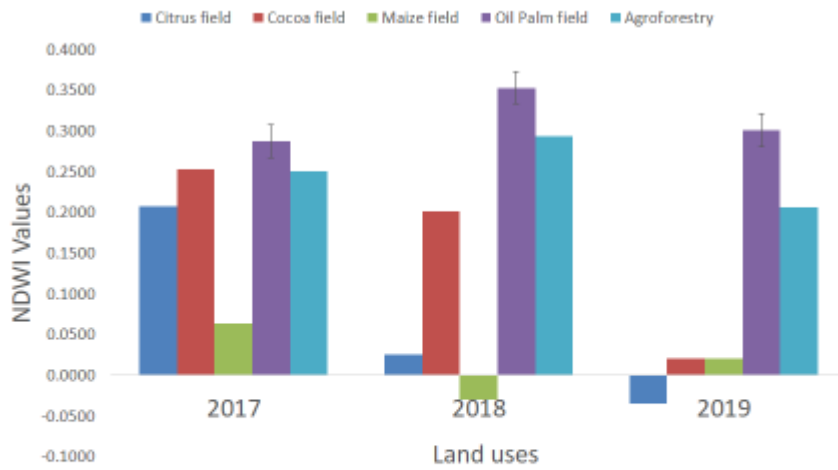


Figure 2c: NDWI of vegetation cover (rainy season)

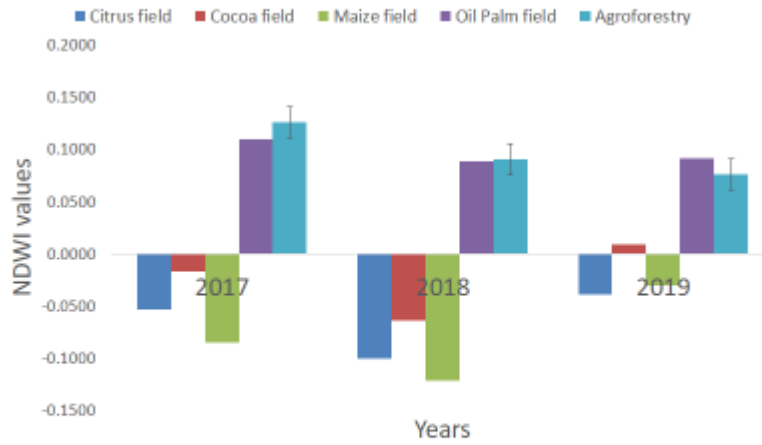


Fig. 2d. NDWI of vegetation cover (dry season)

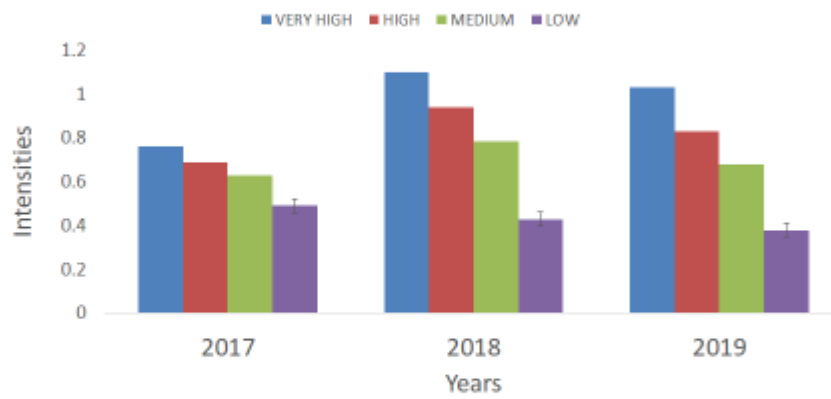


Fig. 3a: SAVI intensities of vegetation cover (rainy season)

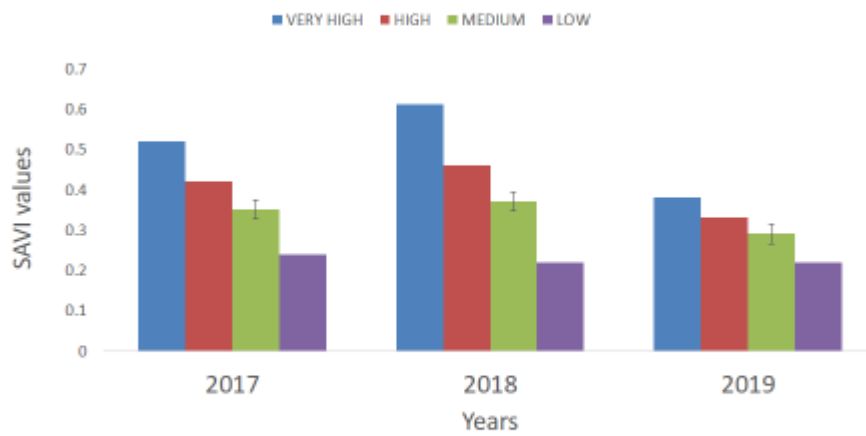


Fig. 3b: SAVI intensities of vegetation cover (dry season)



Fig. 3c. SAVI trends for land uses (rainy season)

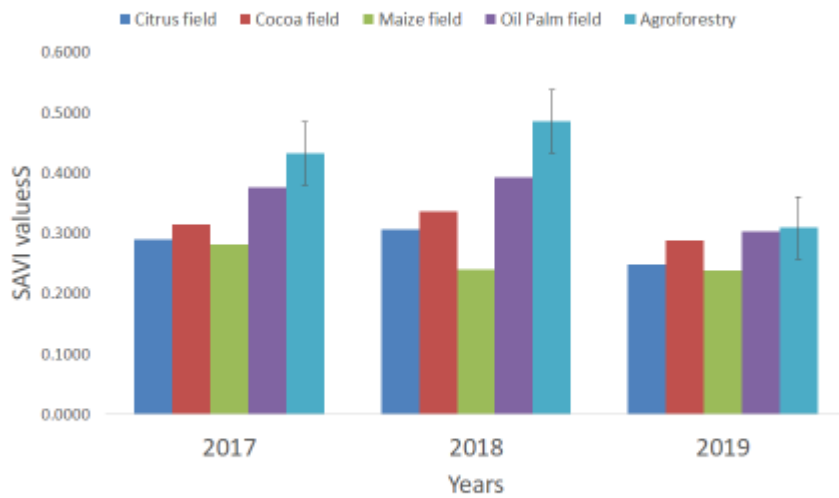


Fig. 3d. SAVI trends of land uses (dry season)

Table 3. Relationship and correlation of NDVI with NDWI and SAVI

Vegetation Indices	Seasons	R ²			P value (0.05)		
		2017	2018	2019	2017	2018	2019
NDVI VS NDWI	Rainy	0.980	0.970	0.740	0.001	0.002	0.06
	Dry	0.930	0.820	0.830	0.008	0.031	0.024
NDVI VS SAVI	Rainy	1.000	1.000	1.000	0.000	0.000	0.000
	Dry	1.000	1.000	1.000	0.000	0.000	0.000

UNDER PEER REVIEW

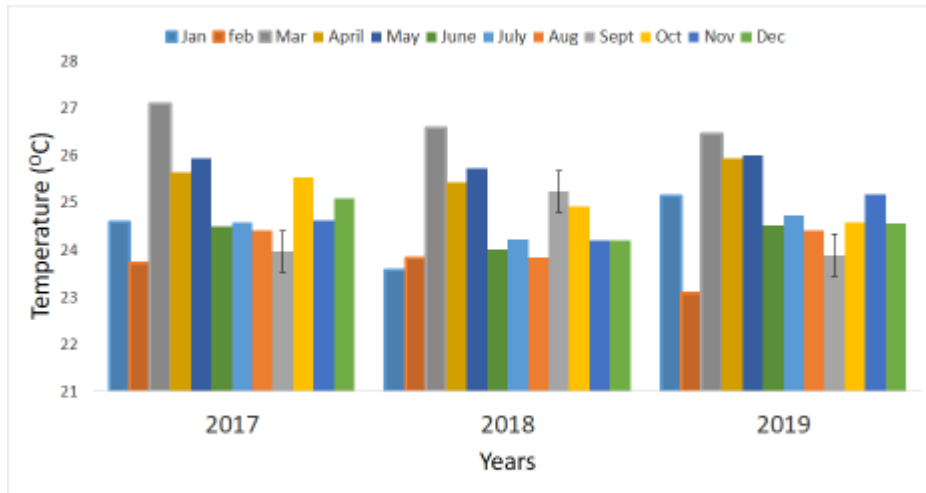


Figure 4a. Mean monthly temperature trends for the years of study

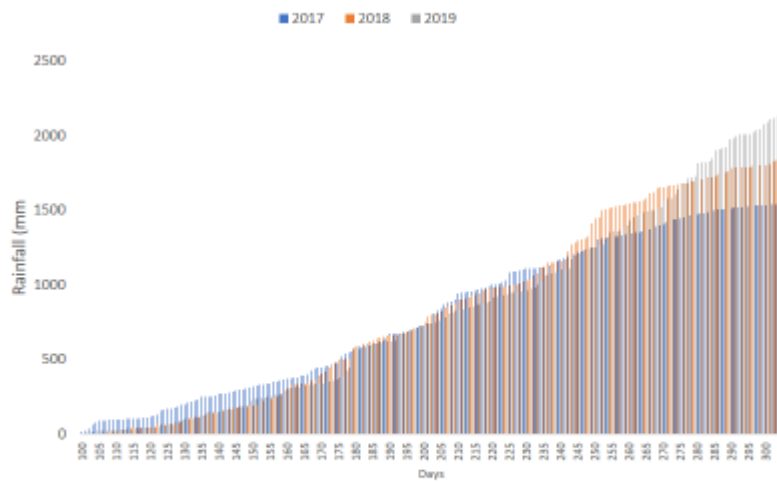


Figure 4b. Rainfall trends for period of study

UNDER PEER REVIEW