

Effect of different genotypes and nitrogen levels on yield, nitrogen use efficiency, production economics and agro-meteorological parameters of fodder oat

Abstract

An experiment was performed to evaluate the effect of different genotypes and nitrogen levels on yield, nitrogen use efficiency, production economics, and agro-meteorological parameters of fodder oat (*Avenasativa*L.) at Dr.Rajendra Prasad Central Agricultural University, Pusa, Samastipur, Bihar. Six oat genotypes, viz., Kent, JO-07-28, OS-403, OS-6, HFO-904 and HFO-906, were sown with 40, 80 and 120 kg of nitrogen per hectare. The experiment was set up using a split-plot design, with three replications of the genotypes in the main plots and N levels in sub-plots. Results revealed that genotype JO-07-28 was significantly superior to Kent (check) with respect to green fodder yield whereas both were comparable to each other with respect to dry matter yield, crude protein content and yield. Kent showed maximum N, P and K uptake and heat use efficiency, helio-thermal and photo-thermal unit efficiency. However, genotype JO-07-28 yielded the highest net returns (Rs. 27421/ha), B:C ratio (1.85), and economic efficiency (Rs. 271/ha/day). Among other nitrogen levels, application of 120 kg N/ha recorded the maximum yields of green fodder (371 q/ha) and dry matter (91 q/ha), crude protein content and yield, N uptake, net returns (Rs. 23096/ha), B:C ratio (1.71) and economic efficiency (Rs. 231/ha/day) and heat use efficiency (7.60), helio-thermal and photo-thermal unit efficiency which were statistically equivalent to 80 kg N/ha. Genotype JO-07-28 and HFO-904 were the most N efficient genotype in terms of partial factor productivity of N fertilizer and nitrogen utilization efficiency, respectively. Enhancement in level of N application reduced the nitrogen use efficiency.

Keywords: Nitrogen use efficiency, Fodder oat, Nitrogen fertilization, Economic efficiency, Heat use efficiency

Introduction

The Indian economy is mainly based on agriculture in which livestock plays a significant role. The livestock sector contributes 4.11% and 25.6% to the Indian and agriculture GDP, respectively. India is the world's largest livestock owner (535.78 million), with a total bovine population of about 302.79 million and a cattle population of about 192.49 million (Anonymous, 2023). Feeding forage significantly enhance the profitability as feed accounts for largest share of the total cost involved in livestock rearing (Nanda *et al.*, 2021). Current level of green fodder could not meet their demand and showed 11.4 and 26.4% deficit, respectively. So it is imperative to select better genotypes with respects to fodder yield and quality to bridge the current gap between demand and supply for sustainable livestock rearing.

Nitrogen is the most important of all the major nutrients for improving crop productivity, both quantitatively and qualitatively. In the majority of fodder crops, nitrogen fertilizer increases the production of dry matter (Ayub *et al.*, 2007). Oat is an important winter cereal forage crop mostly grown in irrigation systems, particularly in India's Central, Northern, and Western states (Joshi *et al.*, 2015). Oat responds significantly to the application of nitrogen in terms of green and dry fodder and crude protein up to a certain level. On the other hand, excessive nitrogen

application to fodder oats under specific environmental circumstances causes a high amount of nitrate accumulation in the leaves of plants, which could be harmful to ruminants (Dubey *et al.*, 2013). Further, this could also lead to N losses like leaching, volatilization and denitrification causing environmental pollution (Yadav *et al.*, 2023). Therefore, determining the ideal nitrogen dosage for enhanced fodder oat production is crucial. So, the current investigation designed to assess the effects of different nitrogen levels on the yield, nitrogen use efficiency, production economics and agro-meteorological parameters of fodder oat genotypes taking into account all of the previously mentioned facts.

Material and methods

The current study was carried out during *Rabi* season of 2021-22 at the Forage Research Block of the Cattle Farm, Dr. Rajendra Prasad Central Agricultural University, Pusa, Samastipur, Bihar. Throughout the crop season, the crop received 41.9 mm of rainfall (Figure 1). The experiment was set up using a split-plot design, with three replications of the genotypes in the main-plots and N levels in sub-plots. Six oat genotypes, *viz.*, Kent, JO-07-28, OS-403, OS-6, HFO-904 and HFO-906, were sown with 40, 80 and 120 kg of nitrogen per hectare. Fodder oat genotypes were continuously sown at a row spacing of 25 cm with a seed rate of 100 kg/ha on November 25, 2021. Application of half of the nitrogen, full quantity of phosphorous and full quantity of potassium was made before the sowing process. Twenty-one days after sowing (DAS), the remaining nitrogen was applied. Urea, diammonium phosphate, and muriate of potash were the sources of fertilizers for nitrogen, phosphorus, and potassium, respectively. The standard operating procedures for all other cultural operations were followed. When the fodder oat reached 50% flowering stage, it was manually harvested. Leaf related parameters like no. of green leaves/tiller, no. of dry leaves/tiller, total no. of leaves/tiller, length and width of flag leaf were noted from randomly selected five plants/plot at harvest stage. After each net plot's crop stand was harvested, it was weighed using an electronic weighing device to determine green fodder yield (GFY) which was then converted from kg/plot to t/ha. Dry matter content of the fresh fodder was determined by placing it in hot air oven till constant weight was achieved to determine the dry matter yield (DMY). Production efficiency in terms of green fodder and dry matter yield was worked out by dividing the GFY and DMY with duration of the crop (days) (Prajapati *et al.*, 2023). After calculating the dry matter's N content and multiplying it by a factor of 6.25, the crude protein content was obtained. This was then multiplied by the dry matter yield to obtain the crude protein yield. P and K contents were also determined and N, P and K uptake was worked out. Nitrogen use efficiency (NUE) parameters like partial factor productivity of N (PFPN) and nitrogen utilization efficiency (NUtE) were worked out following Rostamza *et al.* (2011), Nanda and Nilanjaya (2022) and Yadav *et al.* (2023). Production economics was also worked out keeping the cost of inputs and price of output as per prevailing rates. Agro-meteorological parameters like GDD, PTU, HTU, HUE, PTUE and HTUE were worked out as per Sattar *et al.* (2023) using 5°C as the base temperature of forage oat (Rajala and Peltonen-Sainio, 2011). An analysis of variance was performed on the data for the split plot design. (Gomez and Gomez, 1984).

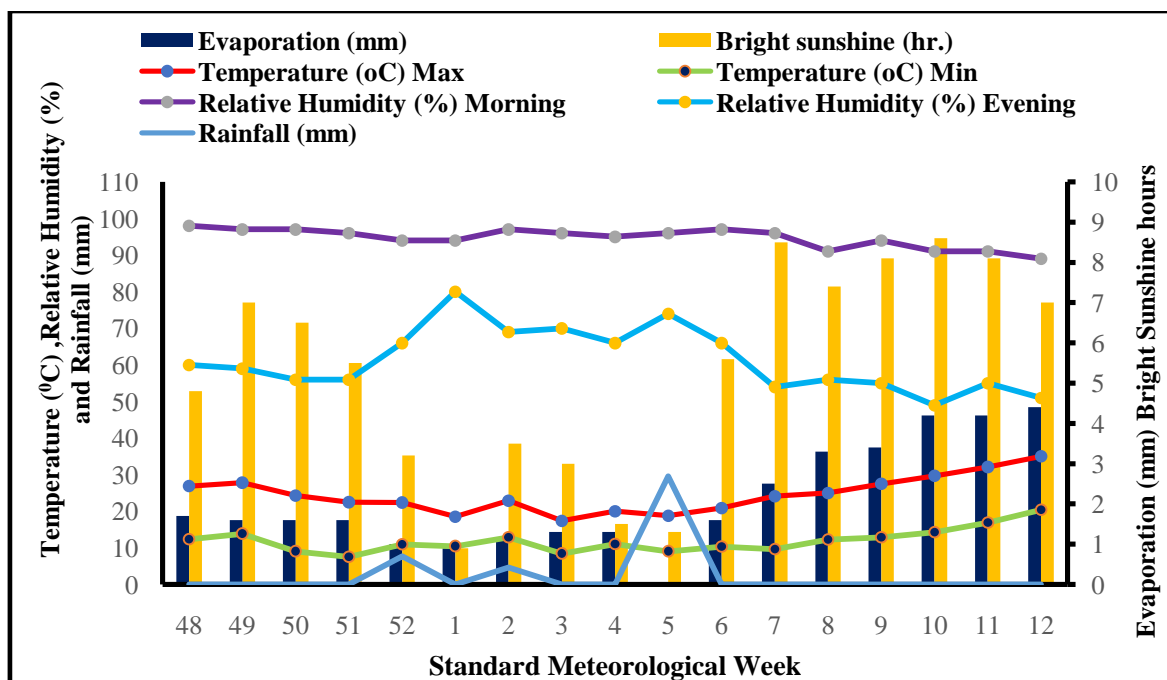


Figure 1. Standard meteorological week wise data during the experimental period.

Results and Discussion

Leaf parameters

Genotypes caused significant variation on no. of dry leaves/tiller, total no. of leaves/tiller, length and width of flag leaf (Table 1). Among genotypes, OS-403 exhibited highest number of dry leaves (3.9) as well as total leaves per tiller (7.0) which was notably higher than other genotypes except for no. of dry leaves/tiller for which it was at par with OS-6 (Table 1). The highest length and width of flag leaf was noted with HFO-904 (49.6 cm) and OS-403 (2.5 cm), respectively which was significantly superior over other genotypes except for flag leaf length for which HFO-904 and HFO-906 were comparable with each other. The differences in these leaf parameters are ascribed to variation associated with genotypes. N levels caused significant variation on total no. of leaves/tiller, length and width of flag leaf (Table 1). The maximum total no. of leaves/tiller (6.6), flag leaf length (45.4 cm) and flag leaf width (2.1 cm) were obtained when 120 kg N/ha was applied with percent improvement of 10.0%, 6.6% and 10.5% over 40 kg N/ha. However, application of 80 kg/ha of N also gave same leaf width (2.1 cm).

Table 1. Leaf parameters of fodder oat as affected by different genotypes and N levels.

| Treatments | No. of green leaves/tiller | No. of dry leaves/tiller | Total no. of leaves/tiller | Flag leaf length | Flag leaf width |
|------------|----------------------------|--------------------------|----------------------------|------------------|-----------------|
|------------|----------------------------|--------------------------|----------------------------|------------------|-----------------|

| | | | | (cm) | (cm) |
|-------------------------|-----|-----|-----|------|------|
| Genotypes | | | | | |
| Kent | 3.7 | 2.2 | 5.9 | 38.8 | 1.7 |
| JO-07-28 | 3.7 | 2.7 | 6.3 | 45.3 | 2.0 |
| OS-403 | 3.1 | 3.9 | 7.0 | 43.5 | 2.5 |
| OS-6 | 3.1 | 3.0 | 6.1 | 40.3 | 1.9 |
| HFO-904 | 3.7 | 2.8 | 6.4 | 49.6 | 2.1 |
| HFO-906 | 3.1 | 2.9 | 6.0 | 48.5 | 1.9 |
| SEm± | 0.2 | 0.3 | 0.2 | 1.2 | 0.1 |
| CD (p<0.05) | NS | 0.9 | 0.5 | 3.6 | 0.3 |
| N levels (kg/ha) | | | | | |
| 40 | 3.2 | 2.8 | 6.0 | 42.6 | 1.9 |
| 80 | 3.4 | 2.9 | 6.3 | 44.9 | 2.1 |
| 120 | 3.6 | 3.0 | 6.6 | 45.4 | 2.1 |
| SEm± | 0.1 | 0.1 | 0.1 | 0.8 | 0.0 |
| CD (p<0.05) | NS | NS | 0.3 | 2.3 | 0.1 |

Fodder yield

Biomass accumulation was the most important factor that contributed to the green and dry fodder yield. Genotype JO-07-28 recorded the highest green and dry fodder yield (396 q/ha and 88 q/ha, respectively) and least by OS-6 (Table 2). However, Kent also produced the highest dry matter yield (88 q/ha). Higher fresh fodder yield with JO-07-28 was because of improved tiller number per meter row length and increased plant height (Sarkar *et al.*, 2022). Patel *et al.* (2021) and Satpalet *et al.* (2018) made similar observations as well. Data (Table 2) revealed that the maximum yield of green fodder and dry matter (371 q/ha and 91 q/ha, respectively) were resulted with 120 kg N/ha which were statistically equivalent with 80 kg, conversely, applying 80 kg of nitrogen greatly enhanced the yield of dry matter and green fodder compared to 40 kg. These findings corroborate the conclusions of Godara *et al.* (2016) and Dabhi *et al.* (2017). As the nitrogen level was raised to 120 kg N/ha, the yield of dry matter and the production of green fodder in oats increased correspondingly.

Production efficiency

Production efficiency relies on two factors, those are dry matter yield and the duration of the crop to attain 50 % flowering. The highest production efficiency was recorded in Kent as because of the shorter duration of the crop than in other genotypes, and the dry matter yield of Kent was statistically comparable with JO-07-28 (Table 2), which had the maximum DMY. However, the lowest production efficiency was observed in HFO-904. This is due to the longer duration of the crop and having a lower dry matter yield. Production efficiency is remarkably influenced by various nitrogen levels (Table 2). Application of N at 120 kg ha⁻¹ resulted in a maximum production efficiency which was statistically comparable to applying 80 kg and significantly higher over 40 kg. However, the lowest production efficiency was noticed with

applying N at 40 kg ha⁻¹. The increase in production efficiency brought on by the higher nitrogen dose may be attributable to the lush vegetative growth manifested in plant height, tiller count, accumulation of dry matter, all of which increased photosynthetic activity and, consequently, production efficiency. That is very close to the finding of Luikhamet *al.* (2012).

Fodder quality

Kent and JO-07-28, these two genotypes of fodder oat, remained on par with each other in terms of crude protein content (CPC) and crude protein yield (CPY) and were superior to the rest of the genotypes (Table 2). However, the lowest CPC and CPY were resulted in genotype HFO-904. These observations are comparable with the results of Godaraet *al.* (2016) who also observed genotypic variation in CP content in fodder oat. Data revealed that nitrogen application has noticeably influenced the crude protein content and yield in fodder oats. Nitrogen applied at 120 kg ha⁻¹ has resulted in maximum CPC and CPY over 80 and 40 kg ha⁻¹ (Table 1). The lowest CPC and CPY were observed with 40 kg N ha⁻¹. Sheoranet *al.* (2017) and Patel *et al.* (2011) were also found similar finding.

Table 2. Fodder yield, production efficiency and fodder quality as affected by different genotypes and N levels.

| Treatments | Green fodder yield (q/ha) | Dry matter yield (q/ha) | DM (%) | Production efficiency (q/ha/day) | | CP (%) | CPY (q/ha) |
|-------------------------|---------------------------|-------------------------|--------|----------------------------------|------|--------|------------|
| Genotypes | | | | GFY | DMY | | |
| Kent | 358 | 88 | 24.41 | 3.90 | 0.96 | 10.13 | 8.89 |
| JO-07-28 | 396 | 88 | 22.31 | 3.92 | 0.87 | 9.81 | 8.70 |
| OS-403 | 328 | 86 | 26.14 | 3.00 | 0.78 | 9.37 | 8.03 |
| OS-6 | 319 | 76 | 23.69 | 3.26 | 0.77 | 9.74 | 7.43 |
| HFO-904 | 359 | 77 | 21.32 | 3.50 | 0.75 | 8.82 | 6.81 |
| HFO-906 | 363 | 85 | 23.43 | 3.62 | 0.85 | 9.09 | 7.79 |
| CD (p<0.05) | 32 | 9 | 1.90 | 0.37 | 0.08 | 0.52 | 0.97 |
| N levels (kg/ha) | | | | | | | |
| 40 | 329 | 73 | 22.14 | 3.30 | 0.73 | 9.13 | 6.64 |
| 80 | 362 | 87 | 24.00 | 3.61 | 0.86 | 9.59 | 8.31 |
| 120 | 371 | 91 | 24.52 | 3.69 | 0.90 | 9.75 | 8.88 |
| CD (p<0.05) | 19 | 5 | 0.65 | 0.19 | 0.05 | 0.27 | 0.58 |

Nutrient content and uptake

Different oat genotypes in relation to N, P and K content and uptake differed significantly (Table 3). Kent resulted in higher N, P and K content and uptake than other genotypes. HFO-904 resulted in the lowest N, P, K content and uptake, with an exception in OS-6, which recorded the

lowest K uptake. This may be because of the linear correlation between chlorophyll content and nitrogen content in plant tissues and because of maximum relative chlorophyll content was recorded in Kent and the lowest chlorophyll content was found in HFO-904, the NPK content and uptake were found to be highest in Kent and lowest in HFO-904. The maximum N, P, K content and uptake were resulted from applying N at 120 kg ha⁻¹ and the minimum N, P, K content and uptake were observed with 40 kg ha⁻¹ (Table 3). This may be the result of the oat plant's poor development at low fertility levels, whereas greater nitrogen levels led to better plant growth and, thus, better crop nutrient uptake. These observations are comparable with the results revealed by Bhatet *al.* (2000) who disclosed that the uptake of N, P and K were raised by increasing nitrogen rates up to 120 kg ha⁻¹.

Table 3. Nutrient content and uptake of fodder oat as affected by different genotypes and nitrogen levels.

| Treatments | Nutrient content (%) | | | Nutrient uptake (kg/ha) | | |
|-------------------------|----------------------|------|------|-------------------------|------|-------|
| | N | P | K | N | P | K |
| Genotypes | | | | | | |
| Kent | 1.62 | 0.36 | 1.75 | 142.2 | 32.0 | 154.4 |
| JO-07-28 | 1.57 | 0.27 | 1.70 | 139.2 | 24.2 | 151.1 |
| OS-403 | 1.50 | 0.25 | 1.56 | 128.5 | 21.2 | 133.6 |
| OS-6 | 1.56 | 0.26 | 1.51 | 118.8 | 20.3 | 112.6 |
| HFO-904 | 1.41 | 0.21 | 1.49 | 109.0 | 16.5 | 114.7 |
| HFO-906 | 1.45 | 0.23 | 1.66 | 124.7 | 19.7 | 143.2 |
| CD (p<0.05) | 0.08 | 0.02 | 0.10 | 15.4 | 3.2 | 19.6 |
| N levels (kg/ha) | | | | | | |
| 40 | 1.46 | 0.22 | 1.51 | 106.2 | 16.2 | 110.1 |
| 80 | 1.53 | 0.27 | 1.60 | 132.9 | 23.7 | 138.0 |
| 120 | 1.56 | 0.29 | 1.73 | 142.1 | 27.1 | 156.7 |
| CD (p<0.05) | 0.04 | 0.02 | 0.07 | 9.3 | 1.8 | 9.6 |

Nitrogen use efficiency

The highest partial factor productivity (PFP) of N was recorded in genotype JO-07-28, which was statistically equivalent with Kent, OS-403, HFO-906 and noticeably higher over OS-6 and HFO-904 (Table 4). However, the lowest PFP of N was observed in OS-6. Because the highest dry matter yield was found in JO-07-28 and the lowest dry matter yield was found in OS-6, the PFP of N was highest in JO-07-28 and the lowest in OS-6. The highest nitrogen utilization efficiency was recorded in HFO-904, which was statistically similar with OS-403, HFO-906 and significantly higher than genotypes Kent, JO-07-28 and OS-6. However, the lowest nitrogen utilization efficiency was observed in Kent. The differences in NUE may be because of genotypic variation. Data (Table 4) showed that maximum PFP of N and nitrogen utilization

efficiency was produced by applying 40 kg ha⁻¹ of N, which was noticeably higher over other nitrogen doses. It might be because of the less applying of N dose causes minimum loss of nitrogen and resulted more utilization of nitrogen and increased productivity. However, the lowest PFP of N and nitrogen utilization efficiency was observed due to applying nitrogen at 120 kg ha⁻¹. This may be because of more application of N dose causes maximum loss of nitrogen and resulted in less utilization of nitrogen, so productivity also become less. Similar finding have been observed by Nanda and Nilanjaya (2022).

Table 4. Nitrogen use efficiency of fodder oat as affected by affect of different genotypes and nitrogen levels.

| Treatments | Nitrogen use efficiency | |
|-------------------------|---|---|
| | Partial factor productivity of N (kg DM/kg N applied) | Nitrogen utilization efficiency (kg DM/kg N uptake) |
| Genotypes | | |
| Kent | 125.7 | 62 |
| JO-07-28 | 130.4 | 64 |
| OS-403 | 129.8 | 67 |
| OS-6 | 107.0 | 64 |
| HFO-904 | 112.7 | 71 |
| HFO-906 | 125.4 | 69 |
| CD(p<0.05) | 14.3 | 4 |
| N levels (kg/ha) | | |
| 40 | 181.8 | 69 |
| 80 | 108.1 | 65 |
| 120 | 75.6 | 64 |
| CD (p<0.05) | 9.3 | 2 |

Effect on economics

Data (Table 5) revealed that genotype JO-07-28 had the highest gross returns (Rs. 59455/ha), net returns (Rs. 27421/ha), B: C ratio (1.85), and economic efficiency (Rs. 271/ha/day) among all genotypes which was at par with HFO-906 regarding B:C ratio and Kent and HFO-906 regarding economic efficiency. The maximum gross returns (Rs. 55652/ha), net returns (Rs. 23096/ha), B: C ratio (1.71), and economic efficiency (Rs. 231/ha/day) were obtained with 120 kg N/ha application, which was statistically equivalent to 80 kg N/ha.

Table 5. Production economics of fodder oat as affected by different genotypes and nitrogen levels.

| Treatments | Cost of cultivation (Rs./ha) | Gross return (Rs./ha) | Net Return (Rs./ha) | B: C ratio | Economic efficiency (Rs./ha/day) |
|-------------------------|------------------------------|-----------------------|---------------------|------------|----------------------------------|
| Genotypes | | | | | |
| Kent | 32034 | 53677 | 21642 | 1.67 | 236 |
| JO-07-28 | 32034 | 59455 | 27421 | 1.85 | 271 |
| OS-403 | 32034 | 49133 | 17099 | 1.53 | 157 |
| OS-6 | 32034 | 47778 | 15743 | 1.49 | 161 |
| HFO-904 | 32034 | 53917 | 21882 | 1.68 | 213 |
| HFO-906 | 32034 | 54587 | 22552 | 1.70 | 224 |
| CD (p=0.05) | - | 4845 | 4845 | 0.15 | 50 |
| N levels (kg/ha) | | | | | |
| 40 | 31512 | 49336 | 17823 | 1.57 | 178 |
| 80 | 32034 | 54285 | 22251 | 1.69 | 222 |
| 120 | 32556 | 55652 | 23096 | 1.71 | 231 |
| CD (p=0.05) | - | 2876 | 2876 | 0.09 | 28 |

Agro-meteorological parameters

Genotypes caused significant variation on days to 50% flowering, accumulated GDD, accumulated HTU, accumulated PTU, HUE, HTUE and PTUE (Table 6). Genotype Kent took 91.7 days to reach 50% flowering stage which was noticeably lower than other genotypes. However, OS-403 took 109.1 days to reach 50% flowering stage which was markedly higher than other genotypes. OS-403 exhibited the highest values for AGDD (1338.3), AHTU (7324.3) and APTU (14800) which was notably higher than other genotypes. However, the highest HUE (8.30), AHTUE (1.75) and APTUE (0.76) were noted with Kent which was significantly superior over other genotypes. Data (Table 6) revealed that N levels caused significant variation on days to 50% flowering, accumulated GDD, accumulated HTU, accumulated PTU, HUE, HTUE and PTUE. The maximum values for days to 50% flowering (101.2 days), accumulated GDD (1204.8⁰C day), accumulated HTU (6191.2⁰C day hr.), accumulated PTU (13231.1⁰C day hr.), HUE (7.60 kg/ha⁰C/day), HTUE (1.50 kg/ha⁰C/day/hr.) and PTUE (0.69 kg/ha⁰C/day/hr.) were obtained when 120 kg N/ha was applied with per cent improvement of 1.5%, 2.1%, 3.3%, 2.3%, 23.2%, 22.9% and 23.2% over 40 kg N/ha.

Table 6.Duration and agro-meteorological parameters of fodder oat as affected by different genotypes and nitrogen levels.

| Treatments | Days to 50% F (day) | AGDD ($^{\circ}\text{C day}$) | AHTU ($^{\circ}\text{C day}$) | APTU ($^{\circ}\text{C day h}$) | HUE (kg/ha $^{\circ}\text{C d}$) | HTUE (kg/ha $^{\circ}\text{C day h}$) | PTUE(kg/ha $^{\circ}\text{C day h}$) |
|-------------------------|---------------------|---------------------------------|---------------------------------|-----------------------------------|-----------------------------------|--|---------------------------------------|
| Genotypes | | | | | | | |
| Kent | 91.7 | 1054.6 | 5015.2 | 11476.7 | 8.30 | 1.75 | 0.76 |
| JO-07-28 | 101.2 | 1201.5 | 6144.4 | 13188.4 | 7.37 | 1.44 | 0.67 |
| OS-403 | 109.1 | 1338.2 | 7324.3 | 14800.0 | 6.40 | 1.17 | 0.58 |
| OS-6 | 97.9 | 1149.5 | 5712.3 | 12580.4 | 6.60 | 1.33 | 0.60 |
| HFO-904 | 102.7 | 1224.5 | 6339.0 | 13458.2 | 6.26 | 1.21 | 0.57 |
| HFO-906 | 100.4 | 1189.6 | 6047.6 | 13049.7 | 7.17 | 1.41 | 0.65 |
| CD (p<0.05) | 4.7 | 74.2 | 614.3 | 867.8 | 0.71 | 0.17 | 0.07 |
| N levels (kg/ha) | | | | | | | |
| 40 | 99.7 | 1179.6 | 5990.6 | 12934.9 | 6.17 | 1.22 | 0.56 |
| 80 | 100.6 | 1194.6 | 6109.6 | 13110.6 | 7.28 | 1.44 | 0.66 |
| 120 | 101.2 | 1204.8 | 6191.2 | 13231.1 | 7.60 | 1.50 | 0.69 |
| CD (p<0.05) | 0.9 | 13.6 | 110.4 | 159.0 | 0.41 | 0.08 | 0.04 |

Correlation studies:

Correlation studies among different parameters (Table 7) indicated that GFY had a positive correlation with nitrogen uptake ($r= 0.698^{**}$), no.of green leaves/tiller ($r= 0.667^{**}$), flag leaf length ($r= 0.500^{*}$). Similarly, dry matter yield had a positive correlation with nitrogen uptake ($r= 0.962^{***}$), crude protein ($r= 0.568^{*}$) but negative correlation with partial factor productivity of N fertilizer ($r= -0.565^{*}$) and nitrogen utilization efficiency ($r= -0.548^{*}$). Days to 50% flowering had a positive relation with no.of dry leaves/tiller ($r= 0.806^{***}$), no.of total leaves/tiller ($r = 0.783^{***}$), flag leaf length ($r= 0.486^{*}$) and flag leaf width ($r= 0.907^{***}$), accumulated GDD ($r= 0.999^{***}$), HTU ($r= 0.996^{***}$) and PTU ($r= 0.999^{***}$). Crude protein yield had an positive relation with dry matter yield ($r= 0.962^{***}$) and crude protein content (0.770^{***}) and no.of green leaves/tiller ($r= 0.475^{*}$). PFPN had a negative correlation with DMY ($r= -0.565^{*}$), nitrogen uptake ($r= -0.590^{**}$) and crude protein yield ($r= -0.590^{**}$). Nitrogen utilization efficiency had negative correlation with crude protein content ($r= -0.998^{***}$), nitrogen uptake ($r= -0.752^{***}$), crude protein yield ($r= -0.752^{***}$) and dry matter yield ($r= -0.548^{*}$) but was positively correlated with flag leaf length ($r= 0.555^{*}$).

Table 7. Correlation among different studied parameters.

| Variable | GFY | DMY | D50F | NGLPT | NDLPT | NLPP | FLL | FLB | NU | CPC | CPY | PFPN | NUtE | AGDD | AHTU | APTU |
|----------|-----------|-----------|-----------|----------|-----------|-----------|----------|-----------|------------|------------|------------|--------|-------|-----------|-----------|------|
| GFY | — | | | | | | | | | | | | | | | |
| DMY | 0.766 *** | — | | | | | | | | | | | | | | |
| D50F | -0.062 | 0.055 | — | | | | | | | | | | | | | |
| NGLPT | 0.667 ** | 0.449 | -0.260 | — | | | | | | | | | | | | |
| NDLPT | -0.328 | 0.032 | 0.806 *** | -0.568 * | — | | | | | | | | | | | |
| NLPP | 0.092 | 0.369 | 0.783 *** | 0.051 | 0.793 *** | — | | | | | | | | | | |
| FLL | 0.500 * | 0.204 | 0.486 * | 0.196 | 0.148 | 0.322 | — | | | | | | | | | |
| FLB | -0.101 | 0.144 | 0.907 *** | -0.175 | 0.800 *** | 0.840 *** | 0.322 | — | | | | | | | | |
| NU | 0.698 ** | 0.962 *** | -0.117 | 0.475 * | -0.059 | 0.280 | -0.021 | 0.030 | — | | | | | | | |
| CPC | 0.286 | 0.568 * | -0.460 | 0.331 | -0.202 | 0.001 | -0.548 * | -0.234 | 0.770 *** | — | | | | | | |
| CPY | 0.697 ** | 0.962 *** | -0.117 | 0.475 * | -0.059 | 0.280 | -0.021 | 0.030 | 1.000 *** | 0.770 *** | — | | | | | |
| PFPN | -0.365 | -0.565 * | -0.078 | -0.320 | -0.148 | -0.416 | -0.230 | -0.284 | -0.590 ** | -0.453 | -0.590 ** | — | | | | |
| NUtE | -0.257 | -0.548 * | 0.437 | -0.292 | 0.167 | -0.015 | 0.555 * | 0.213 | -0.752 *** | -0.998 *** | -0.752 *** | 0.451 | — | | | |
| AGDD | -0.079 | 0.061 | 0.999 *** | -0.267 | 0.817 *** | 0.792 *** | 0.459 | 0.919 *** | -0.106 | -0.442 | -0.107 | -0.076 | 0.420 | — | | |
| AHTU | -0.092 | 0.065 | 0.996 *** | -0.268 | 0.824 *** | 0.800 *** | 0.438 | 0.927 *** | -0.099 | -0.429 | -0.099 | -0.069 | 0.407 | 0.999 *** | — | |
| APTU | -0.081 | 0.061 | 0.999 *** | -0.267 | 0.818 *** | 0.792 *** | 0.456 | 0.920 *** | -0.106 | -0.440 | -0.106 | -0.075 | 0.418 | 1.000 *** | 0.999 *** | — |

Note: GFY-green fodder yield, DMY-dry matter yield, D50F- days taken to 50% flowering, NGLPT- no.of green leaves/tiller, NDLPT- no.of dry leaves/tiller, NLPP- no.of total leaves/tiller, FLL- flag leaf length, FLB- flag leaf width, NU- nitrogen uptake, CPC- crude protein content, CPY- crude protein yield, PFPN- partial factor productivity of nitrogen, NUtE- nitrogen utilization efficiency, AGDD- accumulated GDD, AHTU- accumulated HTU, APTU- accumulated PTU.

Conclusion

It can be inferred from the present investigation that genotype JO-07-28 performed better than other genotypes with respect to green fodder yield and net returns and B:C ratio. Genotype JO-07-28 and HFO-904 were the most N efficient genotype in terms of partial factor productivity of N fertilizer and nitrogen utilization efficiency, respectively. The performance of 120 kg N/ha and 80 kg N/ha were statistically comparable for green as well as dry fodder and profitability parameters but the nitrogen use efficiency parameter PFPN declined significantly with 120 kg N/ha. So, application of 80 kg N/ha could be the optimum dose for with respect to fodder yield and nitrogen use efficiency.

References

- Anonymous. 2023. Annual Report. Department of Agriculture, Cooperation & Farmers Welfare Ministry of Agriculture & Farmers Welfare, Government of India.
- Ayub, M., Nadeem, M.A, Tanvir, A, Tahir, M., Khan, R. M. A. 2007. Interactive effect of different nitrogen levels and seeding rates on fodder yield and quality of pearl millet. *Pakistan Journal of Agricultural Science* 44: 592-6.
- Bhat, M. D., Singh, K. N., Bali, A and Shah, M. H. 2000. Grain yield of oat (*Avena sativa L.*) as influenced by sowing time and nitrogen levels under temperate conditions of Kashmir. *Indian. J. Agron.* 45(1): 199-204.
- Dabhi, M. S., Patel, M. R., Chaudhari, C. R., Patel, V. N. and Patel, P. M. 2017. Response of oat (*Avena sativa L.*) varieties to methods of sowing and nitrogen levels on forage yield and quality. *International Journal of Chemical Studies* 5(4): 683-686.
- Dubey A., Rathi G. S. and Sahu R. 2013. Effect of nitrogen levels on green fodder yield of oat (*Avena sativa*) varieties. *Forage Research* 39(1): 39-41.
- Godara, A. S., Satpal, Duhan, B. S., Pahuja, S. K. 2016. Effect of different nitrogen levels on forage yield, quality and economics of oat (*Avena sativa L.*) genotypes. *Forage Res.* 41(4): 233-236.
- Gomez, K. A. and Gomez, A. A., 1984. *Statistical procedures for agricultural research*. John Wiley & Sons.
- Joshi, R. V., B. J. Patel, and K. M. Patel. 2015. Effect of nitrogen levels and time of application on growth, quality, nitrogen and phosphorus content and uptake for seed production of oat (*Avena sativa L.*). *Forage Res.* 41: 104-108.
- Luikham, E., Kamei, S and Mariam anal, P. S. 2012. Yield, quality and economics of oat fodder (*Avena sativa. L.*) as influenced by nitrogen and varieties. *Forage Res.* 38(2): 112-114.
- Nanda, G. and Nilanjaya. 2022. Yield, nitrogen use efficiency and economics of forage pearl millet as affected by genotypes and nitrogen levels. *Forage Research* 48(2): 215-220.
- Nanda, G., M. Kumar, and B. Prajapati, 2021 : Polybag maize silage as mitigation strategy for green fodder shortage during recurring flood events in Bihar. *Just Agriculture* 2(3). Available at

<https://justagriculture.in/files/newsletter/2021/november/8.%20Polybag%20maize%20sil%20age.pdf> (Last accessed on 15.12.2023).

- Patel, H. K., Rathod P. H., Gohil D. P., Padheriya D. and Rayani A. M. 2021. Response of nitrogen levels on growth, yield and quality of single cut oat cultivars. *International Journal of Agriculture Sciences* 13(4): 10748-10750.
- Patel, T. U., Arvadia, M. K., Malik, P. K., Patel, D. D. and Patel, P. S. 2011. Productivity of oat (*Avena sativa* L.) under different cutting management and split application of nitrogen. *Indian J. Agron.* 56: 164-167.
- Prajapati, B., Nanda, G., Kumar, K., Prajapati, J. and Giri, P., 2023. Evaluation of fodder cropping sequences under Tarai region of Uttarakhand. *Range Management and Agroforestry* 44(1): 134-141.
- Rajala A. and Peltonen-Sainio P. 2011. Pollination dynamics, grain weight and grain cell number within the inflorescence and spikelet in oat and wheat. *Agricultural Sciences* 2(03): 283.
- Rostamza, M., M. R. Chaichi, M. R. Jahansouz, and A. Alimadadi, 2011. Forage quality, water use and nitrogen utilization efficiencies of pearl millet (*Pennisetum americanum*L.) grown under different soil moisture and nitrogen levels. *Agricultural Water Management* 98(10): 1607-1614.
- Sarkar, S., Singh, D., Nanda, G., Kumar, S., Singh, S. K. And Nath, H. 2022. Impact of genotypes and nitrogen levels on growth and yield of fodder oat (*Avena sativa* L.). *Forage Research* 48(3): 379-386.
- Satpal, Sheoran, R. S., Tokas, J. and Jindal, Y. 2018. Quality, yield and economics of oat (*Avena sativa* L.) genotypes for fodder under different nitrogen levels. *International Journal of Chemical Studies*6(1): 1987-1991.
- Sattar, A., Nanda, G., Singh, G., Jha, R.K. and Bal, S.K. 2023. Responses of phenology, yield attributes, and yield of wheat varieties under different sowing times in Indo-Gangetic Plains. *Frontiers in Plant Science* 14. DOI: 10.3389/fpls.2023.1224334.
- Sheoran, R. S., Satpal, U. N. Joshi, B. S. Duhan, P. Kumari, S. Arya and D. S. Phogat. 2017. Agronomic evaluation of oat (*Avena sativa* L.) genotypes for forage yield, quality and economics under varying levels of nitrogen. *Forage Res.* 43: 35- 38.
- Yadav, M.R., Kumar, S., Lal, M.K., Kumar, D., Kumar, R., Yadav, R.K., Kumar, S., Nanda, G., Singh, J., Udawat, P. and Meena, N.K., 2023. Mechanistic Understanding of Leakage and Consequences and Recent Technological Advances in Improving Nitrogen Use Efficiency in Cereals. *Agronomy* 13(2): 527.