

## **Original Research Article**

# **Modelling soil erosion using RUSLE and GIS for Kadalundi river basin**

---

### **ABSTRACT**

**Aims:** To estimate the potential average annual soil loss from Kadalundi river basin using RUSLE model and to prepare the spatial distribution map of soil erosion hazard using GIS to suggest suitable soil conservation and management measures for the basin.

**Study design:** Individual factor maps for each parameter in the RUSLE equation were prepared and multiplied in raster calculator to obtain the spatial distribution map of soil erosion with the help of ArcGIS.

**Place and Duration of Study:** Kadalundi river basin for the duration of 2001 to 2021.

**Methodology:** Rainfall erosivity factor was calculated using the 21 years daily rainfall data and soil erodibility factor was estimated with the basic soil data. DEM was used for the preparation of topographic factor map and satellite imageries were used for the preparation of cover management factor map and conservation practice factor map. The individual factor maps were overlaid in GIS platform to get the spatial distribution map of soil erosion.

**Results:** The results indicated an average annual erosion of  $5.48 \text{ t}\cdot\text{ha}^{-1}\cdot\text{yr}^{-1}$  in the basin. The total quantity of soil washed away from the basin was  $694836.60 \text{ t}\cdot\text{yr}^{-1}$ . The estimated values of R-factor ranged from  $938.97 \text{ MJ}\cdot\text{mm}\cdot\text{ha}^{-1}\cdot\text{h}^{-1}\cdot\text{yr}^{-1}$  to  $1102.65 \text{ MJ}\cdot\text{mm}\cdot\text{ha}^{-1}\cdot\text{h}^{-1}\cdot\text{yr}^{-1}$ , and the computed erodibility factor values varied between  $0.0075$  to  $0.025 \text{ t}\cdot\text{h}\cdot\text{MJ}^{-1}\cdot\text{mm}^{-1}$ . The topographic factor value of the basin was found between  $0$  to  $9.07$ . The basin had C-factor values of  $0.08$  to  $1.10$  and the P-factor values varied from  $0.1$  to  $1$ .

**Conclusion:** The spatial distribution map of erosion suggest that major part of the basin is under slight erosion class and only a minor part is under very severe erosion class. Areas in the very severe erosion class is characterised by moderate to steep slopes, or in other words areas with less slope is having slight erosion. As most of the area of the basin is having slight erosion, simple agronomical measures can be adopted for the mitigation purposes.

*Keywords: RUSLE, GIS, soil erosion, Kadalundi river basin*

## **1. INTRODUCTION**

Life begins with soil and water and continues through the sustainable management of the same. Soil is the key resource to achieving planet sustainability [1]. All living beings benefit from, especially the top 30 cm of soil. The detachment transportation and deposition of nutrient rich top soil is termed as soil erosion. It is usually a natural phenomenon caused by natural forces like water, wind and glaciers. However, it can be accelerated by anthropogenic actions like deforestation, intensive agriculture and others. Erosion caused by water is more common in most of the places. The impact of rainwater touching the ground initiates the erosion process and further it removes a sheet of soil which is known as sheet erosion.

Soil erosion reduces the quality of soil which will result in decline in agricultural productivity. Apart from reduction in soil quality, soil erosion has other detrimental effects like land degradation, desertification, sedimentation in rivers and reservoirs, reduction of water

holding capacity of the soil, water pollution and even ecological collapse. According to estimates, erosion causes the loss of 24 billion tonnes of fertile soil annually. Moving just across the border from one country to the next changes the rate of soil erosion by  $1.4 \text{ t}\cdot\text{ha}^{-1}\cdot\text{yr}^{-1}$  [2]. About 26.50%, 22%, 5% and 9% of Total Geographical Area (TGA) of Andhra Pradesh, Karnataka, Kerala and Tamil Nadu states, respectively, experiences moderate or moderate to severe soil loss [3]. Soil erosion is affecting 15.12 per cent of Kerala's TGA, with erosion rates of more than  $10 \text{ t}\cdot\text{ha}^{-1}$  [4]. Additionally, the elimination of wetlands has led to increased soil erosion and flooding in Kerala [5]. According to [6], floods expose the vulnerable saturated soil and erode the topsoil, which causes further soil erosion and flooding in the future due to less soil available for recharge. From the study, they found that the 2018 floods in Kerala significantly boosted soil erosion rates by 80 per cent.

Assessment of soil erosion in large scale by traditional methods has always been a challenge to the researchers. Models integrated with Geographic Information System (GIS) has emerged as an alternative to tedious conventional methods. Empirical models such as Universal Soil Loss Equation (USLE) and Revised Universal Soil Loss Equation (RUSLE) are most commonly used for the estimation of soil erosion. The USLE is an empirical model used for a given combination of crop system, management practice, soil type, rainfall pattern, and topography [7]. The equation was later updated to overcome its disadvantages, and is known as RUSLE. High compatibility of the empirical models, such as USLE and RUSLE, with GIS has made the erosion assessment much more effortless.

Kadalundi river is one of the four major rivers flowing through the Malappuram district of Kerala. The major part of Malappuram district is covered by the Kadalundi river basin, which is often prone to soil erosion problems. The climatic conditions and topographic characteristics of the basin make it susceptible to soil erosion and sedimentation. Even though different studies concentrated on the land use change in the Kadalundi river basin, the groundwater scenario of the basin and the biodiversity of the basin, studies still needed to address the erosion problems in the basin. This study is the first endeavour to integrate the RUSLE model with GIS to quantify the annual rate of soil erosion in the Kadalundi river basin.

In the light of above mentioned facts, the present study estimates soil loss from the Kadalundi river basin using RUSLE with the assistance of GIS, anticipating to accomplish the following well-defined objectives: 1) To model the potential annual average soil loss from the Kadalundi river basin using RUSLE and to map the spatial distribution of soil erosion hazard using GIS. 2) Comparison of the model results with sediment yield data from outlet gauging stations. 3) To suggest suitable soil conservation and management protocols for the watershed

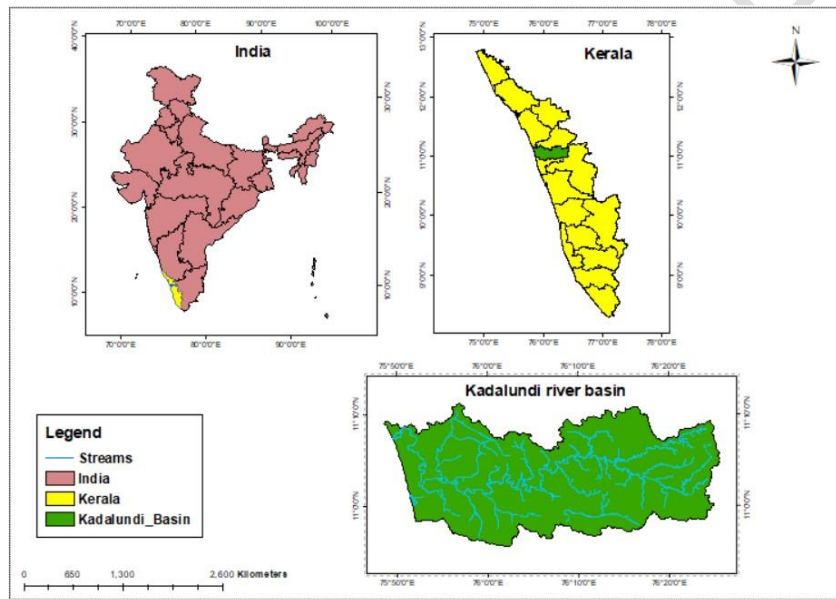
## **2. MATERIAL AND METHODS**

### **2.1 Study area**

The Kadalundi river basin, which extends through three districts of Kerala; Kozhikode, Malappuram and Palakkad, is the area selected for the study. The location map of the study area is shown in Fig. 1. Kadalundi river originates from the Western Ghats of Palakkad district and has two principal tributaries, Olipuzha and Veliyar rivers. The river has a total length of nearly 120 km, with a drainage area of 1274 km<sup>2</sup>. The river drains into the Arabian sea at Kadalundi Nagaram in Vallikkunnu on the North-Western border of Malappuram district. The Kadalundi river basin is located between  $10^{\circ}51'42''$  to  $11^{\circ}10'42''$  north latitude and  $75^{\circ}48'21''$  to  $76^{\circ}24'30''$  east longitude. Fig. 3.1 shows the location map of the study area. Topographically this basin exhibits undulating terrain with steep slopes with an elevation ranging from 0 to 1348 m above MSL. Based on the physiographic condition, the

study area constitutes the three well defined natural divisions of Kerala: lowland, midland and highland.

The river basin has a typical tropical climate, with notable influence from the southwest monsoon season. The Kadalundi river basin receives 3610 mm of rain on average each year. The climate is typically hot and humid, with maximum and minimum temperatures of 28.9 to 36.2°C and 17.0 to 23.4°C respectively. The geology, soil and LULC in the river basin indicate a fertile land. The primary economic activity is agriculture, even though no considerable irrigation schemes are present in the river basin. With diverse agro climatic conditions encountered in different physiographic zones, a wide range of crops, such as coconut, paddy, tapioca, cashew nuts, pepper, rubber, areca nuts and others are cultivated in this basin. The Kadalundi river basin is blessed with rich biodiversity, including both flora and fauna. The Kadalundi estuary, a remarkable wetland, is situated at the mouth of the river and is renowned for its extensive mangrove forest distribution and presence of migratory birds.



**Fig.1. Location map of the study area**

## 2.2 Data

The study area consists of six rain gauge stations, including stations under Indian Meteorological Department (IMD) and Kerala Water Resource Department (WRD). The daily rainfall data of the IMD stations were directly downloaded from their official website (<https://dsp.imdpune.gov.in/>). The available data from WRD stations were obtained from Irrigation Design and Research Board (IDRB), Thiruvananthapuram. The soil data were downloaded from the Soil Grids website (<https://soilgrids.org/>) as GIS layers, which are publically available. The present study used SRTM Digital Elevation Model (DEM) downloaded from United States Geological Survey (USGS) Earth Explorer (<https://earthexplorer.usgs.gov/>) with a resolution of 30 m. To prepare the land use land cover map and NDVI map, Landsat 8 imageries were downloaded from the USGS earth explorer. Table 1 indicates the input data used for the study and its corresponding sources.

**Table 1. Input data used and corresponding source**

Input data	Source
Daily rainfall data	IMD stations and WRD stations ( <a href="https://dsp.imdpune.gov.in/">https://dsp.imdpune.gov.in/</a> )
Soil data	SoilGrids ( <a href="https://soilgrids.org/">https://soilgrids.org/</a> )
Digital Elevation Model	USGS Earth Explorer ( <a href="https://earthexplorer.usgs.gov/">https://earthexplorer.usgs.gov/</a> )
Satellite Imageries	USGS Earth Explorer ( <a href="https://earthexplorer.usgs.gov/">https://earthexplorer.usgs.gov/</a> )

## 2.3 METHODOLOGY

Assessment of soil erosion by conventional method has always been a strenuous job to the scientists and researchers. Empirical models like USLE and RUSLE created a revolution in the estimation of soil erosion. The RUSLE, proposed by [8] deals with empirical data for the estimation of annual average rate of soil erosion. The present study was done using RUSLE model using the equation (1).

$$A = R \times K \times L \times S \times C \times P(1)$$

Where, A=Average annual soil loss ( $t \cdot ha^{-1} \cdot yr^{-1}$ ), R=Rainfall erosivity factor ( $MJ \cdot mm \cdot ha^{-1} \cdot h^{-1} \cdot yr^{-1}$ ), K=Soil erodibility factor ( $t \cdot ha \cdot h \cdot ha^{-1} \cdot MJ^{-1} \cdot mm^{-1}$ ), L=Slope length factor (dimensionless), S=Slope steepness factor (dimensionless), C=Cover management factor (dimensionless), and P=Soil conservation practices factor (dimensionless). The flow chart (Fig. 2) shows the overall methodology adopted for RUSLE modelling in this study.

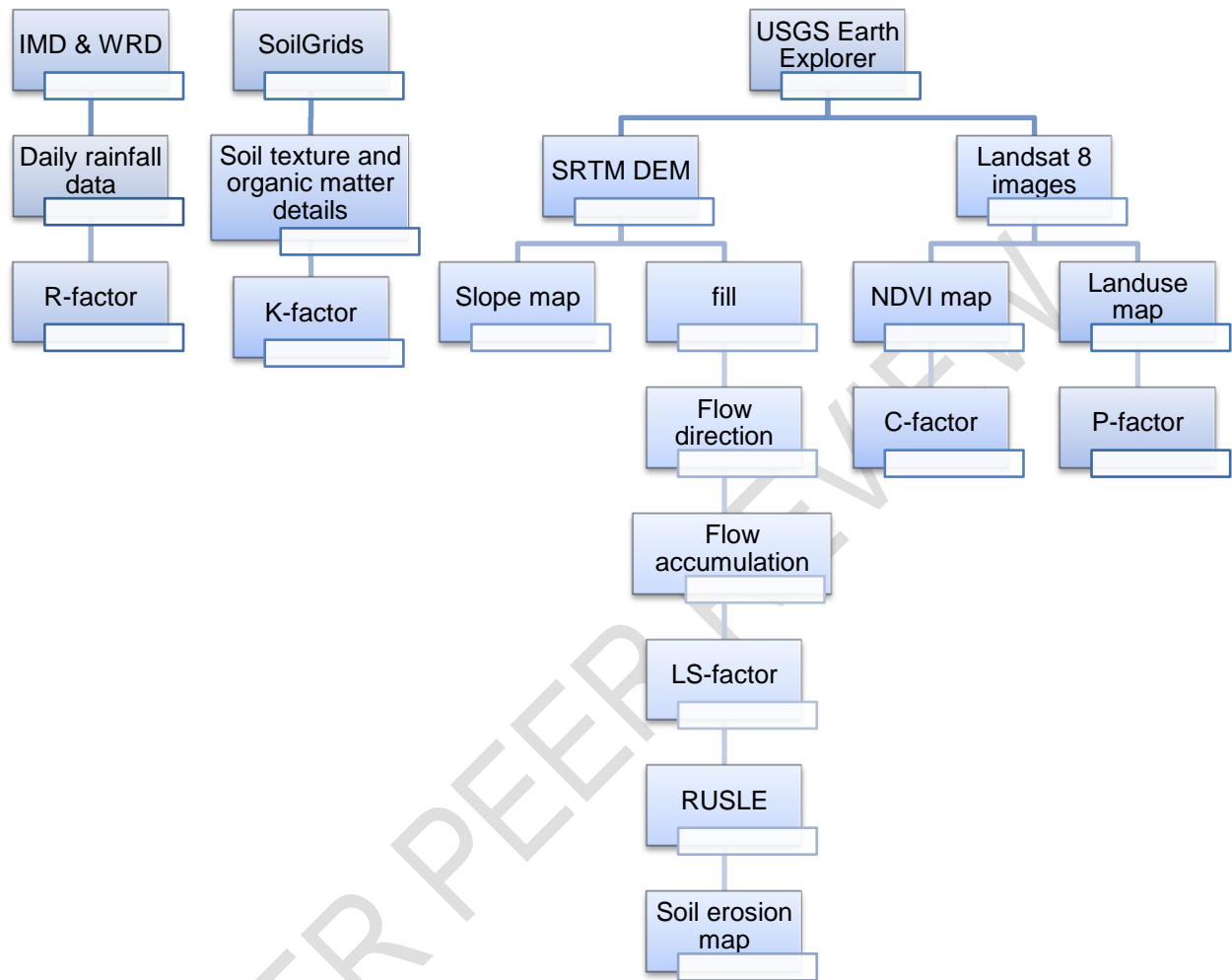
### 2.3.1 Creation of rainfall erosivity (R) factor map

Rainfall erosivity is the ability of rainfall to remove the topsoil. In the RUSLE equation, when factors other than rainfall are held constant, soil losses from cultivated fields are the product of total storm energy (E) and the maximum 30-min intensity ( $I_{30}$ ). The study area lacks recording type rain gauge stations, and hence intensity data could not be drawn. So, in this study the erosivity factor was computed by using equation (2) developed especially for Indian conditions [9].

$$R = 81.5 + 0.375 \times P \quad (340 > P \leq 3500) \quad (2)$$

Where, R= Rainfall erosivity factor ( $MJ \cdot mm \cdot ha^{-1} \cdot h^{-1} \cdot yr^{-1}$ ) and P= Annual rainfall (mm).

Daily rainfall data for 21 years (2001-2021) from six rain gauge stations in the study area were used as the input data to prepare the R-factor map. The map was prepared by the using Inverse Distance Weighted (IDW) interpolation method using IDW tool in ArcGIS.



**Fig. 2. Flow chart of estimation of soil loss using RUSLE and GIS**

### **2.3.2 Creation of soil erodibility(K) factor map**

Soil erodibility factor is an important factor that affects soil erosion along with the R-factor. It is the vulnerability of soil to be detached and transported during a storm event. The soil properties which influence erodibility are soil texture, soil structure, organic matter content in the soil, permeability of the soil, the surface roughness of soil particles and the moisture content present in the soil. A number of mathematical equations are available to find out the K-factor; nonetheless, the globally accepted method is using a nomograph [10] or the equation developed by [11]. Erodibility factor was found using the well-known equation (3) developed by [10].

$$K = \frac{2.1 \times 10^{-4} \times (12 - OM) \times M^{1.14} + 3.25 \times (s - 2) + (p - 3)}{759} \quad (3)$$

Where, K= Soil erodibility factor ( $t \cdot ha \cdot h \cdot ha^{-1} \cdot MJ^{-1} \cdot mm^{-1}$ ), OM= Organic matter (%), M= A function of soil primary particle size fraction

$$M = (\%silt + \%veryfinesand) \times (100 - \%clay) \quad (4)$$

s= Soil structure code (1-Very fine granular, 2-Fine granular, 3-Medium or coarse granular, 4-Blocky, platy or prismatic), p= Soil permeability code. Soil permeability codes (p) based on textural classes include 1-rapid, 2-moderate to rapid, 3-moderate, 4-moderate to slow, 5-slow, and 6-very slow.

The required data like sand, silt and clay content ( $g \cdot kg^{-1}$ ) and organic carbon ( $dg \cdot kg^{-1}$ ) layers were downloaded as GIS layers from the SoilGrids website. Soil structure code and soil permeability code were obtained from [12] published by the Government of Kerala. Erodibility factor was computed by using equation (3) with the help of raster calculator in ArcGIS platform.

### **2.3.3 Creation of topographic (LS) factor map**

Slope length and slope steepness factors together is known as topographic factor. The topography of an area plays a significant role in generating runoff and soil erosion. Steep slope results in high flow velocity, increasing the capability of surface runoff or overland flow to detach and transport more soil particles. Slope length and the steepness of the slope were calculated separately using equation (5) and equation(7) or equation (8), put forward by [13] and [14] and then multiplied to get the topographic factor.

$$L = (\lambda/22.13)^m(5)$$

Where, L= Slope length factor (dimensionless),  $\lambda$ = Slope length (m) and m=Slope length exponent (dimensionless). Flow accumulation raster was created in ArcGIS from DEM and the. Slope length was calculated using equation (6) by considering the resolution of DEM as cell size. Here a globally accepted standard slope length exponent (m) value of 0.14 was used to calculate the slope length factor using equation (5).

$$\lambda = \text{Flow accumulation} \times \text{Cell size} \quad (6)$$

A slope map was needed to calculate the slope steepness factor. It was prepared in ArcGIS using slope tool in the spatial analyst tool of Arc toolbox, the input was DEM. The slope map in degree and percentage was created and converted into radians.

$$S = 10.8 \times \sin \theta + 0.03 \quad S < 9\% \quad (7)$$

$$S = \left( \frac{\sin \theta}{\sin 5.143} \right)^{0.6} \quad S \geq 9\% \quad (8)$$

Where, S=Slope steepness factor (dimensionless)  $\theta$ = Slope angle(radian). After generating L-factor and S-factor maps, their product was found with the help of raster calculator in the Arc toolbox to get the topographic factor.

### **2.3.4 Creation of cover management (C) factor layer**

Another important factor influencing soil erosion rate is vegetation. If the soil is covered with vegetation, there will be enough time for infiltration thus, runoff will be less and chances of erosion will be minimized. In the RUSLE model, the effect of vegetation cover is incorporated in the cover management factor. In this study C-factor map was prepared with the help of NDVI map. According to [15], for a large basin, it is hardly possible to estimate C-factor using the RUSLE guidelines due to the lack of sufficiently detailed data. After performing many experiments, he derived a nonlinear relationship between C-factor and NDVI, which seemed to be adequate.

$$C = \exp\left(-\alpha \times \frac{NDVI}{\beta - NDVI}\right) \quad (9)$$

Where, C= Cover management factor (dimensionless),  $\alpha = 2$ ,  $\beta = 1$  and NDVI= Normalized Difference Vegetation Index.

NDVI is the measure of vegetation health on the land surface. In general, NDVI values range from -1.0 to 1.0, with negative values indicating clouds and water, positive values near zero indicating bare soil, and higher positive values of NDVI ranging from sparse vegetation (0.1 - 0.5) to dense green vegetation (0.6 and above). It was calculated by using equation 10.

$$NDVI = \frac{NIR - R}{NIR + R} \quad (10)$$

Where, NDVI= Normalized Difference Vegetation Index, NIR=Reflection in the Near Infrared region of the electromagnetic spectrum and R=Reflection in the visible red region of the electromagnetic spectrum.

For the preparation of NDVI map, B4 and B5 bands of Landsat 8 images of the year 2021 were used. NDVI was calculated in raster calculator using equation 10. Using this NDVI map, C-factor was calculated with the help of raster calculator using equation (9).

### **2.3.5 Creation of Conservation practice (P) factor map**

Various agronomic and engineering measures are there to minimise the chances of erosion; the conservation practice factor accounts for the effect of soil and water conservation measures on soil erosion in an area. The P-factor values given by [11] on the basis of land use and field slope in percentage were employed in the present study. The P-factor values range from 0 to 1, such that areas having conservation measures will have less P-factor value, and areas with no conservation measures will have P-factor value of 1. Land use map prepared by using supervised classification in the ArcGIS platform and slope map was used for the creation of P-factor map. The land use map and slope map were combined using the union tool in overlay section in the analysis tools of arc tool box. The P-factor values were added to the attribute table of the union map according to Table 2.

### **2.3.6 Estimation of average annual soil erosion**

After preparing the individual factor maps, it was made sure that each map was projected in the WGS\_1984\_UTM\_43N coordinate system. The spatial resolution of the datasets was resampled to 30 m, in order to derive uniform spatial variation of soil loss within the study area in ArcGIS 10.7.1. Average annual soil erosion in  $t \cdot ha^{-1} \cdot yr^{-1}$  was calculated using equation 1 in raster calculator.

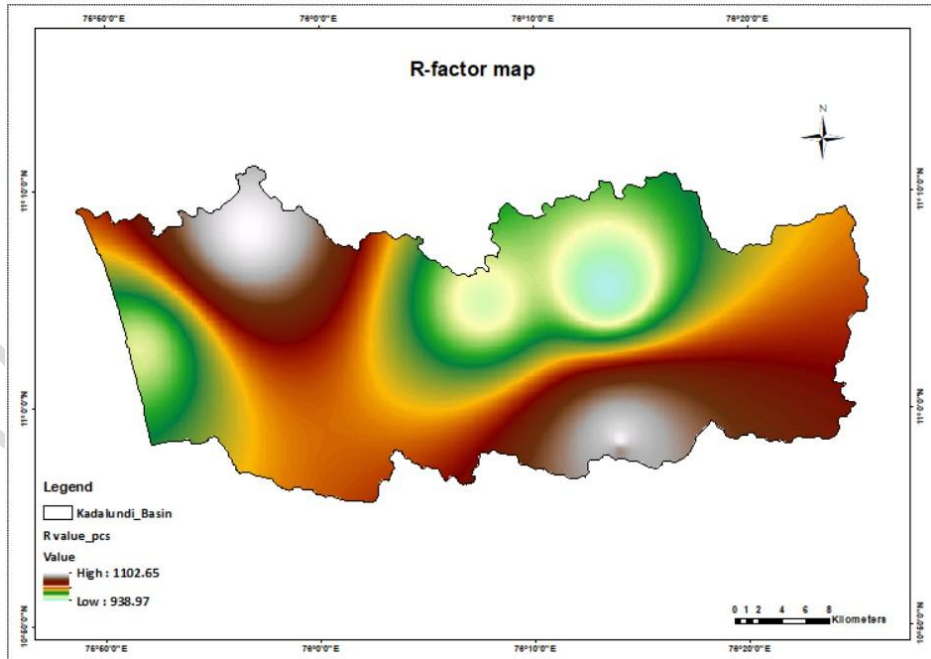
**Table 2. P-factor values based on slope and land use**

Land use	Slope (%)	P-factor
Agricultural areas	0-5	0.10
	5-10	0.12
	10-20	0.14
	20-30	0.19
	30-50	0.25
	50-100	0.33
Non-agricultural areas	-	1

### 3. RESULTS AND DISCUSSION

#### 3.1 Rainfall erosivity factor

The amount of rainfall is an important parameter in the generation of sediment particles, therefore it greatly affects the soil erosion rate. The current study made use of annual rainfall for the calculation of erosivity factor. Similar equation to estimate the R-factor was used by [16]. The estimated values of R-factor ranges from  $938.97 \text{ MJ}\cdot\text{mm}\cdot\text{ha}^{-1}\cdot\text{h}^{-1}\cdot\text{yr}^{-1}$  to  $1102.65 \text{ MJ}\cdot\text{mm}\cdot\text{ha}^{-1}\cdot\text{h}^{-1}\cdot\text{yr}^{-1}$ . Fig. 3 shows the spatial distribution of R-factor over Kadalundi river basin. The interpolated values of R-factor have varying values in each pixel. The higher values of R-factor were found at Karippur and Perinthalmanna regions where average annual rainfall was high.



**Fig. 3. Spatial distribution map of R-factor**

### 3.2 Soil erodibility factor

The erosion susceptibility of the soil is invariably denoted by soil erodibility factor. The soil data downloaded from the SoilGrids website indicated 0 to 54 per cent sand content, 0 to 32 per cent silt content, 0 to 39 per cent clay content and 0 to 12.56 per cent organic matter content in the Kadalundi river basin. The overall permeability code and structural code of the Kadalundi river basin was taken as 3 and 4 respectively. The erodibility factor computed using these data using equation (3) extended from 0.0075 to 0.0256  $t \cdot h \cdot MJ^{-1} \cdot mm^{-1}$  with a mean value of  $0.0183 t \cdot h \cdot MJ^{-1} \cdot mm^{-1}$ . Fig. 4 represents the spatial variability of erodibility factor in the Kadalundi river basin. The low values of K-factor refer to the reduced erosion in the basin. The research carried out by [17] used the soil data from SoilGrids website to get K-factor values of 0.017 to 0.054  $t \cdot h \cdot MJ^{-1} \cdot mm^{-1}$  with a mean value of  $0.03 t \cdot h \cdot MJ^{-1} \cdot mm^{-1}$ .

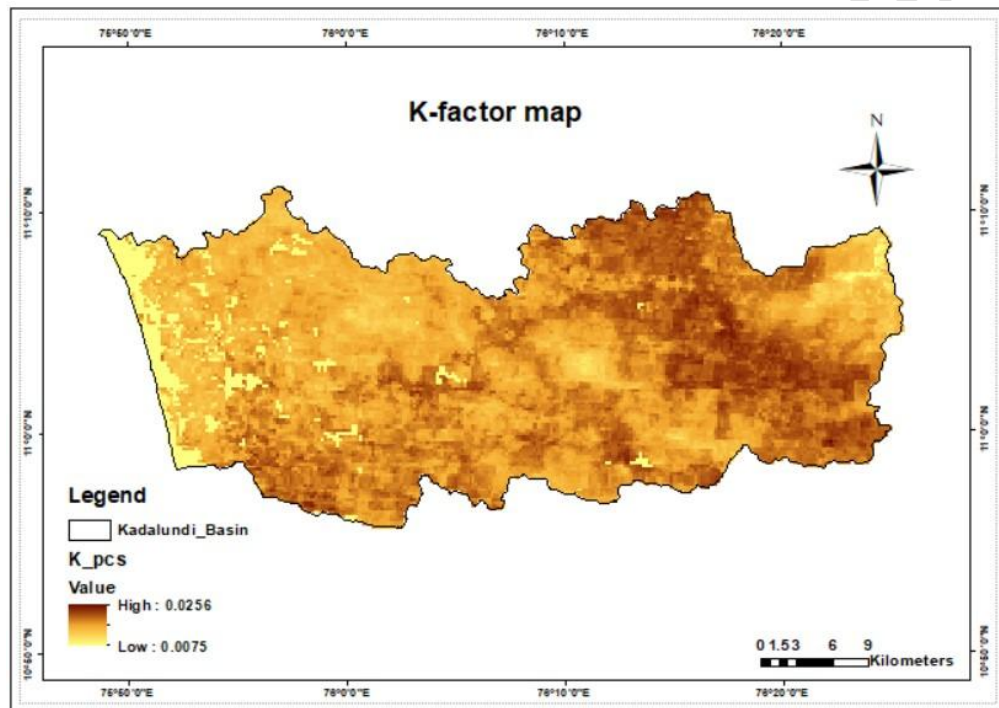


Fig. 4. Soil erodibility factor map of Kadalundi river basin

### 3.3 Topographic factor

Topography of an area plays an important role in runoff generation and soil loss estimation. To create the LS-factor map, L-factor map and S-factor map were prepared separately by using flow accumulation raster and slope map respectively. The slope map prepared for Kadalundi river basin is displayed in Fig. 5. Major part of the basin (29.31%) has slope values between 0 to 5 per cent, a reasonable per cent of the area (53.38%) comes under 5 to 20 per cent slope and only less than 3 per cent of the total area falls under slope per cent greater than 50. The L-factor values ranged between 0 to 2.34, whereas the values of S-factor ranged from 0.03 to 4.15. The LS-factor values of the basin were found between 0 to 9.07 with a mean value of 0.88. It was observed that the pixels with high slope was characterised by high LS-factor values. Fig. 6 shows the LS-factor map of Kadalundi river basin.

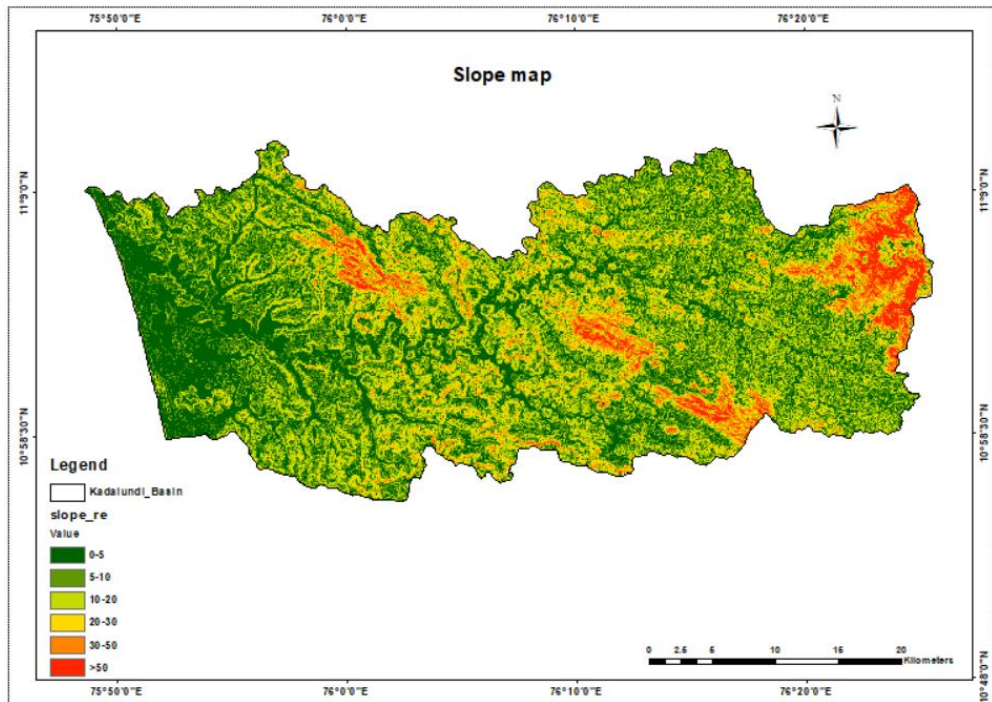


Fig. 5. Slope map of Kadalundi river basin

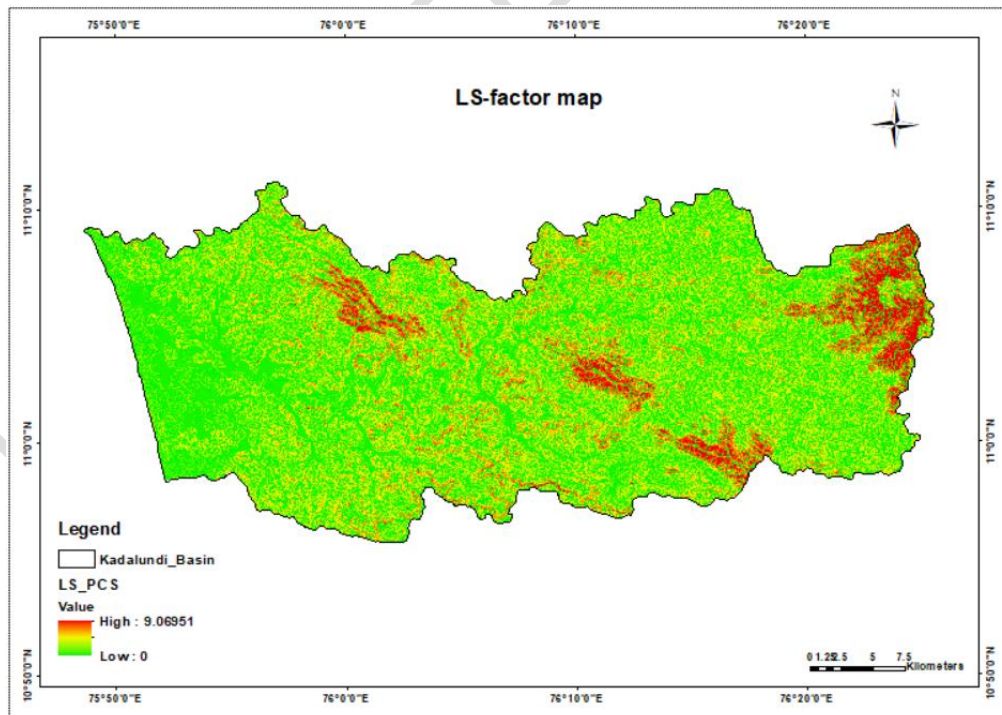


Fig. 6. Topographic factor map of Kadalundi river basin

### 3.4 Cover management factor

The C-factor reflects the effect of surface cover, and practices that change the amount of surface cover, on erosion [18]. In the present study, the C-factor map was generated from the NDVI map prepared with the aid of satellite images. The NDVI values of the basin varied between -0.05 to 0.55, the moderate value is an indication of sparse vegetation in the basin the negative value indicates waterbodies and built-up lands. The basin has C-factor values of 0.08 to 1.10 which is shown in Fig. 7. In contrast with NDVI values high C-factor values were noted in areas with waterbodies and built-up and low C-factor values were found in areas with vegetation cover.

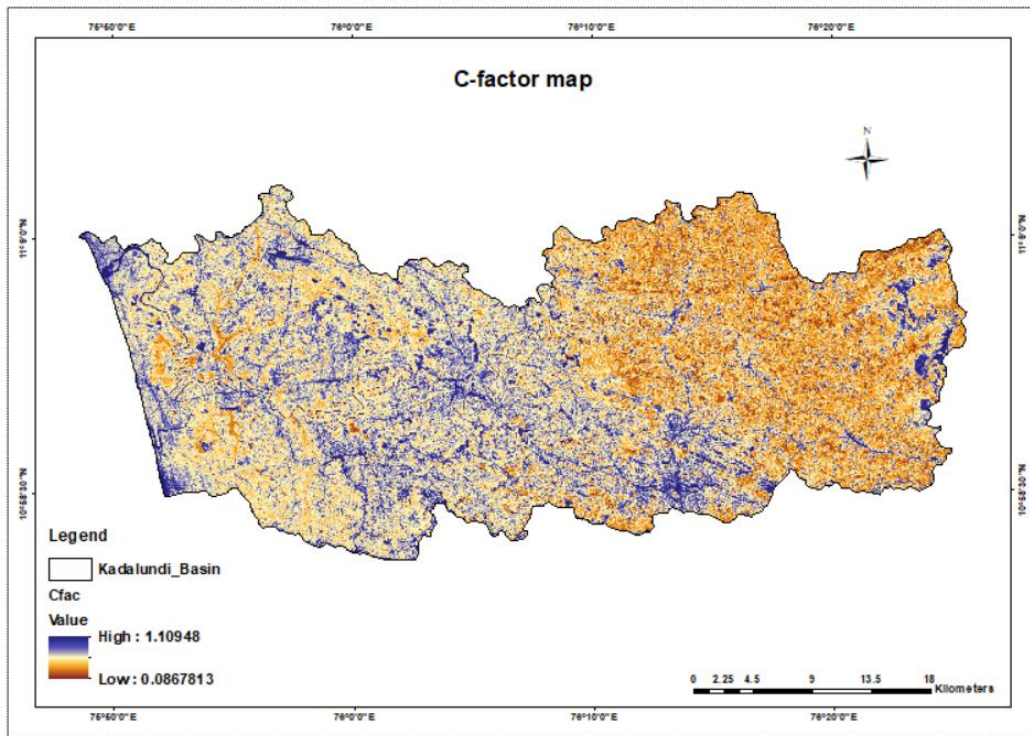
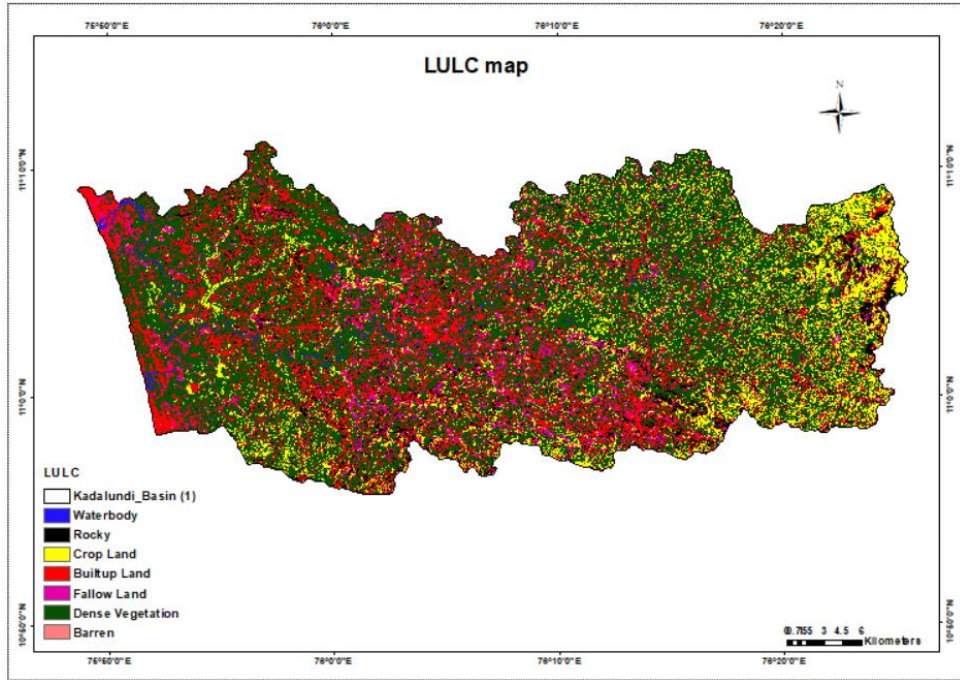


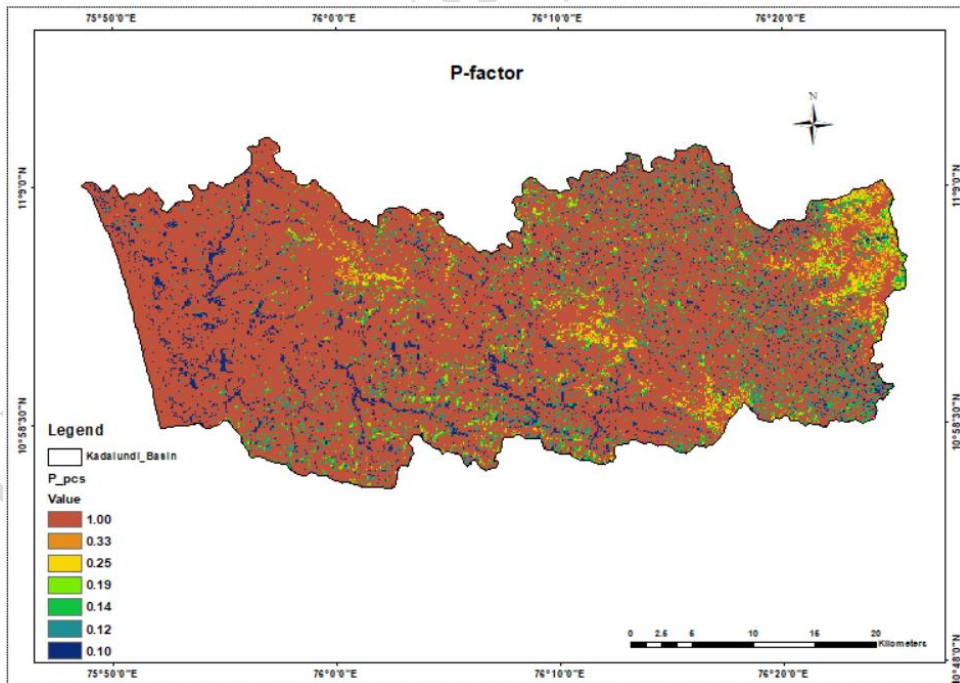
Fig. 7. Spatial distribution of C-factor in Kadalundi river basin

### 3.5 Conservation practice factor

The present study made use of slope map and land use map to create P-factor map, as the P-factor values considered in the study depended on the slope per cent and land use of the basin [11]. The slope map and land use map were combined to assign the P-factor values. It was assigned such that values less than 1 represented the agricultural lands and 1 designated all non-agricultural lands. As per Table 2, the P-factor values ranged from 0.1 to 1. The land use land cover map of the basin prepared by supervised classification is displayed in Fig. 8. Analysis of the land use land cover map revealed that 52.87 per cent of the basin area is covered by dense vegetation, while the barren land constitutes only 0.21 per cent. Significant amount of the area comes under built-up land and crop land with representative area per cent of 18.70 and 13.35 respectively. The P-factor map of the basin is shown in Fig. 9.



**Fig. 8. Land use map of Kadalundi river basin**



**Fig. 9. P-factor map of Kadalundi river basin**

### 3.6 Estimation of average annual soil erosion

The map obtained by multiplying the above mentioned individual factor maps in raster calculator of ArcGIS, demonstrates the spatial distribution of soil erosion in Kadalundi river basin (Fig. 10). The values of the estimated soil erosion by RUSLE model in the basin ranges from 0 to 100.33  $\text{t}\cdot\text{ha}^{-1}\cdot\text{yr}^{-1}$  with a mean value of 5.48  $\text{t}\cdot\text{ha}^{-1}\cdot\text{yr}^{-1}$ . The total quantity of eroded soil from the basin was 694836.60  $\text{t}\cdot\text{yr}^{-1}$ . Table 3 shows the categorised values of soil erosion and corresponding area covered. Major portion of Kadalundi river basin (60.66%) is subjected to slight erosion (40  $\text{t}\cdot\text{ha}^{-1}\cdot\text{yr}^{-1}$ ). These values showed strong agreement with the results obtained by [19] for soil erosion estimation in Malappuram district of Kerala (59.17% in slight erosion class and 0.40% in very severe erosion class). Other classifications are, 15.96 per cent of area under moderately slight erosion class (5-10  $\text{t}\cdot\text{ha}^{-1}\cdot\text{yr}^{-1}$ ) moderate erosion class (10-15  $\text{t}\cdot\text{ha}^{-1}\cdot\text{yr}^{-1}$ ) consists of 13.28 per cent of the area, moderately severe erosion class (15-20  $\text{t}\cdot\text{ha}^{-1}\cdot\text{yr}^{-1}$ ) includes 5.92 per cent of the total area and nearly 4 per cent (3.70%) comes under severe erosion class (20-40  $\text{t}\cdot\text{ha}^{-1}\cdot\text{yr}^{-1}$ ).

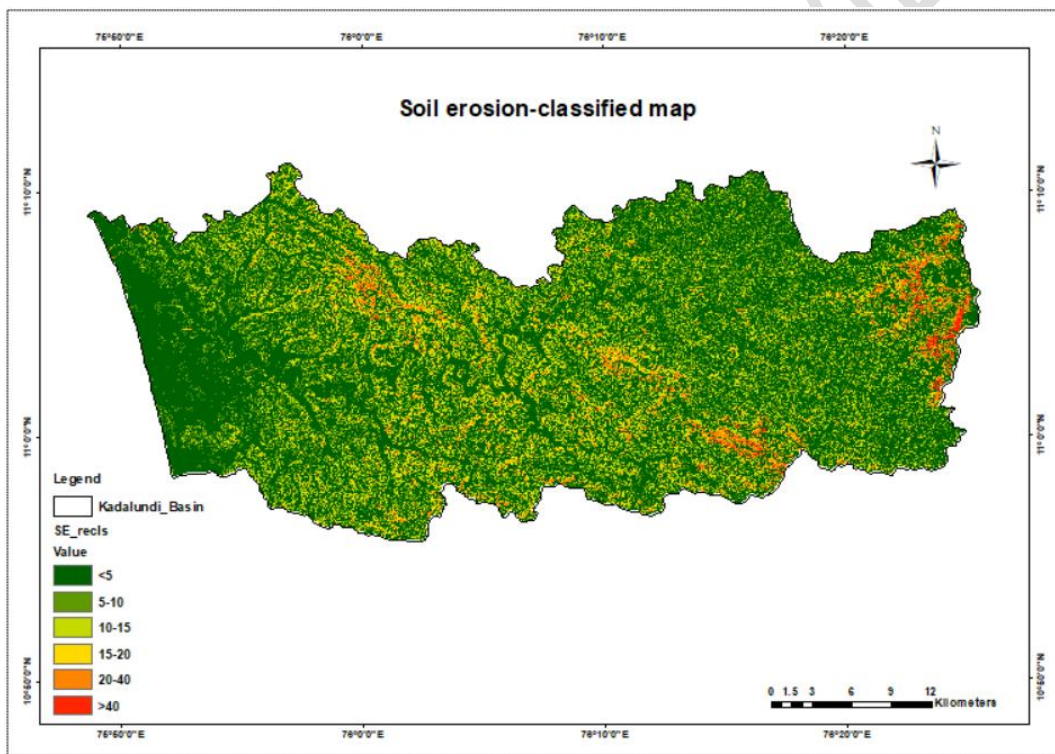


Fig. 10. Classified map of soil erosion for Kadalundi river basin

**Table 3. Soil erosion risk classification and area coverage**

Sl. No.	Soil loss ( $\text{t}\cdot\text{ha}^{-1}\cdot\text{yr}^{-1}$ )	Erosion class	Area (ha)	Area (%)
1.	<5	Slight	76214.07	60.66
2.	5-10	Moderately slight	20060.82	15.96
3.	10-15	Moderate	16684.83	13.28
4.	15-20	Moderately severe	7439.22	5.92
5.	20-40	Severe	4660.56	3.70
6.	>40	Very severe	570.96	0.45

#### 4. CONCLUSION

The proper river basin management demands quantification of soil erosion from the basin catchment. In light of this fact, the present study attempted to assess the soil erosion of the Kadalundi river basin by using RUSLE model incorporated with GIS. Individual maps of the RUSLE factors were developed and soil erosion map of Kadalundi river basin was prepared. The interpolated R-factor values for 21 years (2001- 2021) ranged from  $938.97 \text{ MJ}\cdot\text{mm}\cdot\text{ha}^{-1}\cdot\text{h}^{-1}\cdot\text{yr}^{-1}$  to  $1102.65 \text{ MJ}\cdot\text{mm}\cdot\text{ha}^{-1}\cdot\text{h}^{-1}\cdot\text{yr}^{-1}$  in Kadalundi river basin. The estimated values of K-factor varied from 0.0075 to  $0.0256 \text{ t}\cdot\text{h}\cdot\text{MJ}^{-1}\cdot\text{mm}^{-1}$  with a mean value of  $0.0183\text{t}\cdot\text{h}\cdot\text{MJ}^{-1}\cdot\text{mm}^{-1}$ . The average value of LS-factor was very less (0.88) while high LS-factor values were identified in high elevation ranges (9.07). The C-factor determined using NDVI values ranged from 0.08 to 1.10, in which higher values were observed in built-up land, water bodies and barren lands and low values in densely vegetated areas. The P-factor values assigned based on the slope and land use varied from 0.1 to 1, where 1 represents all non-agricultural lands.

Multiplication of the raster layers of the individual factors in RUSLE model in raster calculator generated the spatial distribution map of soil erosion in Kadalundi river basin. The estimated values of soil erosion ranged from 0 to  $100.33\text{t}\cdot\text{ha}^{-1}\cdot\text{yr}^{-1}$  with an average value of  $5.48 \text{ t}\cdot\text{ha}^{-1}\cdot\text{yr}^{-1}$ . The total quantity of soil washed away from the basin was  $694836.6 \text{ t}\cdot\text{yr}^{-1}$ . Based on the classified erosion map, 60.66 per cent area of the basin came under slight erosion class. Moderately slight erosion class covered 15.96 per cent of area whereas moderate erosion class covered 13.28 per cent of the area. Around 6 per cent of the total area belonged under moderately severe erosion class and nearly 4 per cent under severe erosion class. However, 0.45 per cent of the total basin area experienced very severe erosion with soil loss greater than  $40 \text{ t}\cdot\text{ha}^{-1}\cdot\text{yr}^{-1}$ .

Altogether, the study concluded that, the soil erosion values of Kadalundi river basin comes in agreement with the soil erosion estimated for Malappuram district by [18] with 59.17 per cent area in the slight erosion class and 0.40 per cent of area under very severe erosion class. Higher erosion ranges are found in higher elevation (>50% slope) areas and barren

land possesses more erosion considering land use, while slight erosion is characterized by lower elevation ranges and crop lands. Since majority of the area in the basin comes under slight erosion class, simple agronomical measures can be adopted for reducing the effect of erosion and contour bunds, trenches and terraces can be used according to slope to prevent the soil erosion problems in the elevated areas.

## REFERENCES

1. Keesstra SD, Bouma J, Wallinga J, Tittonell P, Smith P, Cerdà A, et al. Forum paper: The significance of soils and soil science towards realization of the UN sustainable development goals (SDGS). *Soil Discussions*. 2016;1-28.
2. Wuepper D, Borrelli P, Finger R. Countries and the global rate of soil erosion. *Nature sustainability*. 2020;3(1):51-5.
3. Mandal D, Giri N, Srivastava P. The magnitude of erosion-induced carbon (C) flux and C-sequestration potential of eroded lands in India. *European J. Soil Sci.* 2020;71(2):151-68.
4. Sharda VN, Mandal D, Dogra P. Prioritizing soil conservation measures based on water erosion risk and production and bio-energy losses in peninsular South Indian states. *Catena*. 2021;202:1-15.
5. Abraham S. The relevance of wetland conservation in Kerala. *Int. J. Fauna Biol. Stud.* 2015;2(3):1-5.
6. Chinnasamy P, Honap VU, Maske AB. Impact of 2018 Kerala floods on soil erosion: Need for post-disaster soil management. *J. Indian Soc. Remote Sens.* 2020;48(10):1373-88.
7. Benavidez R, Jackson B, Maxwell D, Norton K. A review of the (Revised) Universal Soil Loss Equation ((R) USLE): With a view to increasing its global applicability and improving soil loss estimates. *Hydrol. Earth Syst. Sci.* 2018;22(11):6059-86.
8. Renard KG, Foster GR, Weesies GA, McCool, Yoder DC. Predicting soil erosion by water: a guide to conservation planning with the Revised Universal Soil Loss Equation (RUSLE). US Department of Agriculture, Agricultural Research Service; 1997.
9. Babu R, Dhyani BL, Kumar N. Assessment of erodibility status and refined Iso-Erodent Map of India. *Indian J. Soil Conserv.* 2004;32(2):171-7.
10. Wischmeier WH, Johnson CB, Cross BV. Soil erodibility nomograph for farmland and construction sites. *J. Soil Water Conserv.* 1971; 189–93.
11. Wischmeier WH, Smith DD. Predicting Rainfall-Erosion Loss: Agricultural Research Service Handbook. Washington DC, USDA;1978.
12. SSO (Soil Survey Organisation). Bench mark soils of Kerala. Soil Survey Organisation, Department of Agriculture, Kerala;2007.
13. Smith DD, Wischmeier WH. Factors affecting sheet and rill erosion. *Eos, Transactions American Geophysical Union.* 1957;38(6):889-96.
14. Mccool DK, Brown LC, Foster GR, Mutchler CK, Meyer LD. Revised slope steepness factor for the Universal Soil Loss Equation. *Transactions of the ASAE.* 1987;30(5):1387-96.
15. Van der Knijff JM, Jones RJ, Montanarella L. Soil erosion risk: assessment in Europe. Office for official publications of the European communities, Luxembourg;2000.
16. Saha M, Sauda SS, Real HR, Mahmud M. Estimation of annual rate and spatial distribution of soil erosion in the Jamuna basin using RUSLE model: A geospatial approach. *Environ. Challenges.* 2022;8:1-14.
17. George JK, Kumar S, Hole RM. Geospatial modelling of soil erosion and risk assessment in Indian Himalayan region—A study of Uttarakhand state. *Environ. Adv.* 2021;4:1-14.

18. Uddin K, Murthy MS, Wahid SM, Matin MA. Estimation of soil erosion dynamics in the Koshi basin using GIS and remote sensing to assess priority areas for conservation. PloS one. 2016;11(3):1-19.
19. Naidu LGK, Sikka AK, Srinivas S, Selvi V, Krishnan P, Singh DV, et al. Soil Erosion of Kerala, NBSS & LUP, Nagpur;2014.

## APPENDIX

Sample calculation of R-factor for Anakkayam station for the year 2001 to 2021

Year	Annual rainfall, mm (P)	R-value
2001	2470.40	1007.90
2002	2092.20	866.08
2003	2342.00	959.75
2004	2293.60	941.60
2005	2533.90	1031.71
2006	3326.90	1329.09

---

2007	3464.10	1380.54
2008	2176.30	897.61
2009	2509.80	1022.68
2010	2217.30	912.99
2011	2552.20	1038.58
2012	1379.40	598.78
2013	2622.60	1064.98
2014	2524.30	1028.11
2015	1816.90	762.84
2016	1203.40	532.78
2017	1871.70	783.39
2018	2435.50	994.81
2019	2531.70	1030.88
2020	2227.50	916.81
2021	2440.00	996.50

---

Consider the year 2021,

To calculate the R-factor according to the equation

$$R = 81.5 + 0.375 \times P$$

$$R = 81.5 + 0.375 \times 2440$$

$$R = 996.50 \text{ MJ} \cdot \text{mm} \cdot \text{ha}^{-1} \cdot \text{h}^{-1} \cdot \text{yr}^{-1}$$