

### **POST-HARVEST ANTHRACNOSE OF MANGO CAUSED BY *COLLETOTRICHUM GLOESPORIOIDES*: A REVIEW**

#### **Abstract**

Mango (*Mangifera indica* L.) is an edible stone fruit most widely grown in tropical and sub-tropical regions. It is been cultivated in South Asia around 4000 years. The genus *Mangifera* consists totally 49 species, but only 41 species are considerable. Mango is the most cultivated and important fruit around the world especially in India. Since ages, the people from ancient India describe mango tree as ‘Kalpavriksha’ which means wish granting tree. Mango is the eight most important fruit crop grown throughout the world which it contains the nutritive values, minerals, vitamins and dietary fibers. Mango is highly perishable due to climacteric nature of the fruit, it produces high amount of ethylene which is known as ‘Ripening hormone’. However, the fruit quality and commercialization were drastically reduced by the fungus anthracnose incited by *Colletotrichum gloeosporioides*; it causes the post-harvest losses of about 35 to 40 percentage, becoming a major post-harvest disease of mango. Many pre-harvest and post-harvest management practices have been practiced to control mango anthracnose including chemical methods. This review summarizes an overview on exhibiting of this disease, the factors influencing them and the recent management approaches to sustain the fruit quality and maintain the supply chain of mango.

**Keywords:** Tropical fruit, Pathogen diversity, Epidemiology, Disease cycle, Symptomatology, Integrated Disease Management.

#### **1. Introduction**

Mango (*Mangifera indica* L.) is popularly known as “King of fruits”. It is the most popular leading commercial horticultural fruit crop grown in India. Mango is a dicotyledonous plant belonging to the order Sapindales and in the family Anacardiaceae. It is a climacteric horticultural fruit crop which is widely grown in the regions of tropics as well as in sub tropics [1]. Mango was originated from South East Asia mainly in Indo Burmese region. It is reported that the chromosome of mango is  $2n = 2x = 40$  and  $n = 20$  as well the mango is believed to be an

allopolyploid [2]. Mango is known to be the most important tropical fruit crop of Asia widely cultivated in more than 87 countries, among them India, China, Thailand, Indonesia, Philippines, Pakistan and Mexico as the predominant mango producing countries [3]. The leading exporter of mango is Thailand, and the main importer is China; the biggest producer is India. The worldwide production in 2021 was 54.73 mt tons. Mango is rich in vitamin C, vitamin A, vitamin B6, fibers as well as known to be a gradient source ascorbic acid,  $\beta$ -carotene, thiamine and niacin [4]. India is the largest producer of mango in the world. The country produces 20 million tons of mango annually, representing 40.48% of the total world mango production. However, mango is highly susceptible to diseases caused by plant pathogenic microbes favoured by the rich nutrients compound as well as water that provide an ideal source for the growth and development of pathogenic microbes. This fact led to the reducing the quality of mango, during the period of post-harvest, leading to a high cause of economic loss niacin [5]. Mango is highly susceptible to post-harvest attack of various plant pathogenic organisms, leading to heavy economic losses [6]. There are various pathogens attacking mango, among them anthracnose caused devastating problem in export industry [7]. In fruits and vegetables, during post-harvest period more than 50% of disease damages are due to *Colletotrichum* species [8] as *Colletotrichum gloeosporioides* penz & sacc. The Anthracnose is one of the major latent infection in horticultural crops, especially in mango. The prominence of anthracnose is delayed onset of disease symptoms caused by the fungus. But it is a later devastating disease, leading to serious post-harvest loss. This pathogen attack leaves and immature fruits as a latent infection, later during the storage, the lesion progressively appear. The Anthracnose attacks young fruits, flowers and twigs. In case of mature fruits shows black sunken lesions during the storage period. The genus *Colletotrichum* is a large genus consisting of a large number of major species that are among the most prevalent fungal pathogens causing disease in diverse tropical as well as sub-tropical crops. Anthracnose affects nearly all mango varieties cultivated in many tropical countries, primarily due to the prevalent high temperatures and humidity typical of tropical regions. The incidence of anthracnose in mango fruit reaches almost 100% during wet conditions [33]. The *Colletotrichum* was first reported by Tode [9], initially known as genus *Vermularia*. Corda [10] introduced the genus *Colletotrichum* and it was comprised “Coelomycetes” with a telomorphic stage of *Glomerella* [11]. The *Colletotrichum* genus consists of 200 fungal species, among them 15 species are more complex in causing diseases. In India, 20 different genera of fungi are known to

be attacking mango fruits during post-harvest period, among them the *C. gloeosporioides* is most important disease-causing pathogen. The paper aims to explore various aspects of *Colletotrichum* spp., including morphology and pathogen diversity. It may investigate factors such as the conducive environmental conditions that promote the growth and spread of this pathogen. Understanding these conditions is crucial for developing strategies to manage and control the disease it causes. Furthermore, the paper seems to address the fact that understanding these post-harvest losses is important for developing effective storage practices and preventing economic losses in agriculture. The mention of integrated plant disease management indicates that the paper explores holistic approaches to control *Colletotrichum* spp. This could involve combining various strategies, such as biological control, chemical treatments, and cultural practices, to manage the pathogen effectively. This implies that the findings and recommendations from the review may be used to develop practical solutions or guidelines to minimize the impact of *Colletotrichum* spp. on stored crops.

## **2. Pathogen diversity of mango anthracnose – *Colletotrichum* spp.**

Several reports from India, the world's largest mango producer, highlight *C. gloeosporioides* as the primary causative agent of mango anthracnose. However, this may not always be accurate. *Colletotrichum gloeosporioides* sensu lato plays a pivotal role as a significant pathogen responsible for mango anthracnose on a global scale [34,35,36]. Additionally, in certain instances, *C. acutatum* sensu lato has been documented as being associated with mango anthracnose [34, 37]. By utilizing restriction analysis and ITS region sequencing, revealed diverse subgroups within *C. gloeosporioides* associated with mango anthracnose in India [36]. Pathogenicity tests demonstrated varying degrees of virulence among *C. gloeosporioides* isolates, suggesting the potential presence of multiple species causing the disease. Subsequent multigene phylogenetic analysis identified four phylogenetic species (*C. fragariae* sensu stricto, *C. fructicola*, *C. jasmine-sambac*, and *C. melanocaulon*) and five *Colletotrichum* lineages without designated species names associated with mango anthracnose in India [38]. Notably, none of the *Colletotrichum* isolates from mango samples grouped with *C. gloeosporioides* sensu stricto, aligning with earlier findings [39]. The study identifies 13 species associated with mango anthracnose, including *C. asianum*, *C. cliviicola*, *C. cordylinicola*, *C. endophytica*, *C. fructicola*, *C. gigasporum*, *C. gloeosporioides*, *C. karstii*, *C. liaoningense*, *C. musae*, *C. scovillei*, *C.*

*siamense*, and *C. tropicale*. Among these, *C. asianum* and *C. siamense* emerge as the most prevalent, each constituting 30% of the total species. *Colletotrichum cordylinicola*, *C. endophytica*, *C. diaspora*, *C. liaoningense*, and *C. musae* were the initial *Colletotrichum* spp. reported in association with mango anthracnose [40].

Phylogenetic analysis, primarily relying on internal transcribed spacer (ITS) sequences, reveals that *C. gloeosporioides* encompasses diverse groups or species sub-populations, suggesting the potential involvement of other *Colletotrichum* species in mango anthracnose [36][51]. Conversely, various studies indicate that *Colletotrichum* isolates obtained from mango may represent pathogenically and genetically distinct populations within *C. gloeosporioides* [52][53]. The *C. gloeosporioides* population affecting mango exhibits a restricted host range and demonstrates high virulence exclusively towards mango. Upto now, mango anthracnose is linked to 17 *Colletotrichum* species globally. The application of multiple markers in phylogenetic analysis suggests the possibility of discovering additional species in mango-producing regions around the world [54].

**Table 1: Casual pathogenic organism among *Colletotrichum* attacking fruit crop**

<b>Fruit Crop</b>	<b>Reported casual organism</b>	<b>Country</b>	<b>References</b>
Mango ( <i>Mangifera indica</i> )	<i>C. gloeosporioides</i>	Panama	Rojas et al [12]
	<i>C. gloeosporioides</i>	Srilanka	Krishnapillai and Wijeratnam [13]
	<i>C. gloeosporioides</i>	Colombia	Pardo-De la Hoz et al [14]
	<i>C. gloeosporioides</i>	South china	Li et al [15]
	<i>Colletotrichum</i> spp.	Brazil	Lima et al [41]
	<i>Colletotrichum</i> spp.	Sri Lanka	Krishnapillai et al. [42]
	<i>Colletotrichum</i> spp.	Sanya City and other areas of China	Tarnowski et al [43] and Nascimento et al [44]
	<i>Colletotrichum</i> spp.	South Africa	Sharma et al [45]
	<i>Colletotrichum</i> spp.	Malaysia	Latiffah et al [46]
	<i>Colletotrichum</i> spp.	Taiwan	Wu et al [47]
	<i>Colletotrichum</i> spp.	Mexico	Tovar-Pedraza et al [48]
	<i>Colletotrichum</i> spp.	Philippines	Alvarez et al [49]
<i>Colletotrichum</i> spp.	Indonesia	Benatar et al [50]	

### 3. Anthracnose of mango: A challenge for agriculture-food sector

Anthracnose of mango is one of the most devastating pathogen during the post-harvest period. In case of anthracnose infection, it is due to the latent or quiescence of the pathogen [16]. The infection initially occurs in the field, viz., inflorescence, twigs, young fruits but the highest impact is during the post-harvest period of mango. It causes up to 40-50 % of yield losses in mature mango fruits. Anthracnose disease is seivour; in the case of climacteric fruits as mango, being the best example for climacteric fruit, since the fruit ripening induces the biochemical and physical changes which provides the suitable conducive conditions for the growth and development of a pathogen. In India, more than 25% of mangoes are spoiled due to the lack of proper post-harvest management techniques. So thus, the main motive of this study is to describe the detailed cause the anthracnose disease plays as an evident role in post-harvest period [17].

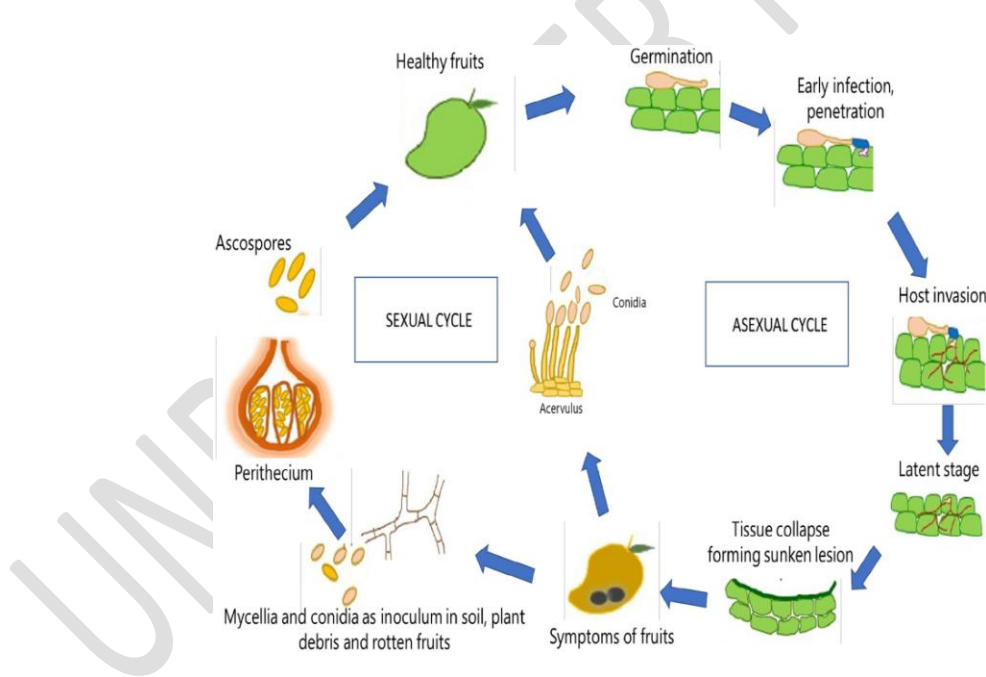
#### 3.1 Epidemiology: The post-harvest condition favors anthracnose attack of mango

The disease development is not always dependent of the presence of the pathogen on the source but it also depends on the conducive environmental factors and proper storage management practices such as rainfall, humidity and temperature which also influence the disease epidemic [18]. Typically, fruits are free from diseases at the time of harvest as pathogens are usually quiescent or latent state. However, during storage and ripening, mature fruits may exhibit symptoms of anthracnose. Initially the pathogen infects non wounded, green immature fruits in the field condition. Later at the time of post-harvest, the conducive environmental conditions are the high temperature as well as the high relative humidity-RH [15]. The anthracnose pathogen is established at the following conducive factors, RH of 95% atleast it favors for the spore germination and it produces appressorium at the temperature of 20-25°C. Then the formation of penetration peg is highest at the temperature of 25°C Celsius. The optimum environment conditions are: temperature for the production of conidia is between 25 to 30°C and free available high moisture. The spores are released free from the acervuli under high moist condition. The severity of anthracnose on mango is highest at the temperature of 25°C and RH of 100% whereas the fungi failed to establish the infection at the temperature of  $\leq 10^{\circ}\text{C}$  and  $\leq 30\%$  RH [18].

#### 3.2 Disease cycle

In terms of dissemination of the *Colletotrichum*, the conidia was passively dispersed through rain splash or irrigation water. At the time of inoculation, conidia or spores are landed on the

infection court such as leaves, panicles, branch terminals where it causes the infection. The *Colletotrichum* development has two phases: a) The first phase of infection occurs in the young fruits or immature fruits. The germination of spore and cuticle epidermal penetration occurs in the young tissues; b) The second phase of infection, begins when the climacteric fruits begin to ripen after the invasion of the pathogen into the cuticle. It remains quiescent once the fruits begin to ripen and the pathogen development starts. Thereby it exhibits the symptoms on pre harvest and post-harvest phases. The Pre-harvest phase on immature fruits, produces tear strain appearance and alligator skin development on the unripe mango fruits and at the time of post-harvest, in the storage period black sunken round to irregular lesions appear on the mature or ripening fruits. During storage, the environmental conditions like continuous rain as well the humid or moist condition, favor the reproduction of the pathogen. On the symptomatic region of the tissue, it produces acervuli from that the dissemination of conidia happens. The pathogen survives as an inoculum in defoliated branch terminals and mummified flowers. It is spread through air borne conidia [19]. (Fig.1).



**Fig. 1 Disease cycle of mango anthracnose.** Picture courtesy [59]

### 3.3 Symptomatology

The name of *Colletotrichum gloeosporioides*, was first proposed in 1882 in Penzig, Poland [23] as Anthracnose fungus, genus *Colletotrichum gloeosporioides* (perfect stage: *Glomerella cingulata*) [20]. This fungus, (*C. gloeosporioides*) is responsible for a major fruit infection disease of subtropical and many tropical fruits species, later referred to as anthracnose [21]. The first symptoms of anthracnose on mango are exhibits, initially in the field as a reddish brown to deep brown spots with various sizes spread all over the leaf. Later the spots enlarge which forms ‘shot hole’ appearance killing the whole inflorescence [22][23]. The infection of the fungus occurs in young fruits in the field and it remains in latent phase until ripening [17]. Beyond the fruits, leaves, twigs, and flowers also fall victim to mango anthracnose. Observable leaf symptoms manifest as black necrotic spots with irregular shapes on both leaf surfaces. Similar symptoms can be manifested on twigs and flowers, with these black necrotic spots potentially merging to create larger infected areas. Ultimately, the infected tissues dry up, leading to the eventual death of the affected parts of the plant [34][20]. Initially, small, dark brown to black spots appeared on fruits; later, these markings underwent gradual enlargement during post-harvest ripening. Eventually, they transform into circular, water-soaked lesions, presenting as dark brown to black, soft, and sunken areas on the fruit, frequently surpassing 2 cm in diameter. Later, the lesions with various sizes can coalesce together and cover considerable areas of the fruit, typically developing tear skin from the base towards the end of the fruit [20]. But in severe cases, apart from the peel which was restricted it even penetrate in the pulp of the fruit as well as it produces acervuli, with orangish to salmon pinkish mass of conidia arise on the lesions [24]. (Fig.2).



**Figure.2: Post – harvest symptoms of mango anthracnose**

### **3.4 Post-harvest management approaches**

The post-harvest disease on fruits is radiantly controlled by adopting effective pre- and post-harvest management practices. In mango diseases, especially the anthracnose of mango causes the major storage losses, negatively affecting market price. To reducing the anthracnose of mango, efficient integrated pre-and post-harvest management practices should be achieved on Johnson & Hofman (2009) [25]. After the harvest, the quality of fruits cannot be improved but it can be maintained wisely during storage [26].

#### **3.4.1 Resistant cultivars**

Nariayal and Chenna-Swarnarekha are varieties resistant to mango anthracnose, and K.B. Karel, Maharaja of Mysoor, Sona Kullu, Banarasi Betali, Neelum×YoraMalgoa are moderately resistant varieties [25].

#### **3.4.2 Cultural diseases control of mango**

Implementing effective sanitation practices in both the field and storage facilities is crucial for minimizing disease incidence. High wetness and high temperature favors for the pathogen growth and development. If this condition prolongs, the disease begins its reproductive phase for the dispersal and survival [27]. A rainy season highly favors *C. gloeosporioides* development. So, development of mango orchards in dry areas prevail this disease during the flowering and fruit formation period. Maintaining proper spacing, pruning of trees and intercropping with other type of trees [16]. In case of post-harvest condition, store the harvested mangoes in the sanitized, dry aerated places and refrigerate keep at 10-12°C [1]. The fruit development occurs at the dry season, the anthracnose occurrence will be almost zero (0) [20].

#### **3.4.3 Time of harvesting**

The harvested immature and over matured mangoes are highly susceptible for various pathogen attacks. The harvesting time plays an important role in pathogen incidence, the mature fruits are harvest at which attains some criteria's viz., fruit size, proximal shoulder development, skin color, sugar content. Harvesting fruits at the optimal time ensures minimal disease incidence. Harvesting the mango fruits immediately after rain, which provokes the pathogen attack so avoid the harvest after rain [23].

#### **3.4.4 Physical methods**

Hot water treatment: HWT is a non-chemical effective treatment to control mango anthracnose. Hot water dip of fruits for 15- 20 minutes at 53–55°C, application of hot water dip without the waxing of fruits causes the shriveling of fruits due to the destruction of natural wax [23]. The temperature above 55°C cause scalding of mango peel and below the temperature 52 °C is not effective against the anthracnose pathogen [28]. Forced dry air and vapor heat: application of dry air heat for 3–6 hours at different temperatures, depending on the mango variety [16]. Cold plasma technology represents an alternative method for inhibiting anthracnose pathogens in tropical fruit. Cold plasma refers to a partially ionized gas, wherein a small subset of atoms and molecules undergo ionization through electrical discharges at atmospheric or sub-atmospheric pressure [55][56]. Research utilizing cold plasma technology has been conducted on food and feed contaminated with spoilage and mycotoxigenic fungi, yielding promising outcomes [56].

### **3.4.5 Biological methods**

Globally fungicide treatments are not welcoming instead of people are looking forward to eco-friendly and non-residual management practice is biological control. *Bacillus licheniformis* and *Candida oliophila* are used as a fruit protectant against anthracnose of mango [29]. The utilization of *Trichoderma asperellum* as an antagonistic organism has proven effective in combating mango anthracnose [30]. Yeasts, which are unicellular fungi, possess various traits that render them attractive as biocontrol agents. They exhibit rapid growth on a diverse range of substrates, boast a high reproductive rate, and have straightforward nutritional requirements. Additionally, yeasts are non-mycotoxigenic and can thrive in high-sugar environments [57][58]. Other applications like essential oils like., mustard oil, lemon oil, basel oil at 150 ppm are used to reduce the *C. gloeosporioides* on mango [31]. The rising demand for anthracnose control methods that are chemical-free or involve reduced chemical usage has prompted the exploration of alternative, consumer-safe approaches. Examples include the development of safer methods such as edible coatings made from chitosan and essential oils. Additionally, Generally Recognized as Safe (GRAS) salt treatments, nanomaterials, and cold plasma technology have been subjects of investigation. Frequently, these alternative strategies are employed in combination to achieve more effective inhibition of anthracnose pathogen growth and a reduction in disease severity.

### **3.4.6 Chemical methods**

The another alternative and most efficient method is chemical based control the fungicide thiabendazole (TBZ) benzimidazole group of fungicide is add to wash water at a conc. of 400 ppm to prevent mango anthracnose. The other some post-harvest dip fungicides such as propineb, difenoconazole, prochloraz, Carbendazim are recommended to control mango anthracnose [32].

#### **4. Conclusion**

This literature has reviewed the overview on pathogen morphology, pathogen growth and development, symptom production, post-harvest management practices of anthracnose of mango. This chapter provides an interesting finding on the environmental factors and management practices which can reduce the disease incidence. Recent approaches in postharvest disease, that consists of regulatory, biological, physical, chemical management methods. Nowadays, IDM (Integrated disease management) practices is the highly suggested strategy to reduce the residual effect and protecting the consumer health by gradually increasing the eco- friendly practices rather than using chemical methods, even though the chemical practices give a drastic protection but it leaves an aberrant residual effect in fruits. The predominant **pre-harvest** and postharvest practices, which provides a sensible manipulation of **disease control strategies** that increases the quality retention and reduce the disease incidence during the supply chain of mango.

#### **REFERENCES**

1. Rehman A, Malik AU, Ali H, Alam MW, Sarfraz B. Preharvest factors influencing the postharvest disease development and mango fruit quality. *Journal of Environmental & Agricultural Sciences*. 2015;3:42-47.
2. Mukherjee S. K. Mango: its allopolyploid nature. *Nature*. 1950;166(4213):196-197. <https://doi.org/10.1038/166196b0>
3. Tharanathan RN, Yashoda HM, Prabha TN. "The King of Fruits"- An Overview. *Food Reviews International*. 2006; 22:95–123. <https://doi.org/10.1080/87559120600574493>
4. Maldonado-Celis ME, Yahia EM, Bedoya R, Landázuri P, Loango N, Aguilón J, Restrepo B, Guerrero Ospina JC. Chemical composition of mango (*Mangifera indica* L.) fruit: Nutritional and phytochemical compounds. *Frontiers in plant science*. 2019;17(10):1073. <https://doi.org/10.3389/fpls.2019.01073>

5. Wilasinee Konsue, Tida Dethoup, SavitreeLimtong. Biological control of fruit rot and anthracnose of post-harvest mango by antagonistic yeasts from Economic Crops Leaves. *Microorganisms*. 2020;8:317. <https://doi.org/10.3390/microorganisms8030317>
6. Tian SP, Liu J, Zhang CF, Meng XH. Quality properties of harvested mango fruits and regulating technologies. *New trends in postharvest management of fresh produce II. Fresh Produce*. 2010;4:49-54.7.
8. Abera, Amsalu, Fikre Lemessa, Girma Adugna. Prevalence and Intensity of Mango (*Mangifera indica* L.) Anthracnose Caused by *Colletotrichum* Species in South-western of Ethiopia. *Ethiopian Journal of Applied Science and Technology*. 2017;8(1):1-10.
9. Wang QH, Fan K, Li DW, Han CM, Qu YY, Qi YK, Wu XQ. Identification, virulence and fungicide sensitivity of *Colletotrichum gloeosporioides* ss responsible for walnut anthracnose disease in China. *Plant disease*. 2020;104(5):1358-68. <https://doi.org/10.1094/PDIS-12-19-2569-RE>
10. Corda ACI. *The mushrooms of Germany: Germany's flora in illustrations based on nature with descriptions* Sturm, Nürnberg.1831
11. Hyde KD, Cai L, McKenzie EHC, Yang YL, Zhang JZ, Prihastuti H. *Colletotrichum*: a catalogue of confusion. *Fungal Diversity*. 2009;39: 1-17.
12. Rojas EI, Rehner SA, Samuels GJ, Van Bael SA, Herre EA, Cannon A, Chen R, Pang J, Wang R, Zhang Y. *Colletotrichum gloeosporioides*.l. associated with *Theobroma cacao* and other plants in Panama: Multilocus phylogenies distinguish host-associated pathogens from asymptomatic endophytes. *Mycologia*. 2010;102:1318–1338. <https://doi.org/10.3852/09-244>
13. Krishnapillai N,Wijeratnam, RSW. First report of *Colletotrichum asianum* causing anthracnose on Willard mangoes in Sri Lanka. *New Disease Report*. 2014;29. <http://repo.lib.jfn.ac.lk/ujrr/handle/123456789/1244>
14. Pardo-De la Hoz CJ, Calderon C, Rincon AM, Cardenas M, Danies G, Lopez-Kleine Restrepo S, Jimenez P. Species from the *Colletotrichum acutatum*, *Colletotrichum boninense* and *Colletotrichum gloeosporioides* species complexes associated with tree tomato and mango crops in Colombia. *Plant Pathology*. 2016; 65:227–237. <https://doi.org/10.1111/ppa.12410>
15. Li Q, Bu J, Shu J, Yu Z, Tang L, Huang S, Guo T, Mo J, Luo S, Solangi GS, Hsiang T. *Colletotrichum* species associated with mango in southern China. *Scientific reports*. 2019;9(1):18891. <https://doi.org/10.1038/s41598-019-54809-4>

16. Zakaria L. Diversity of *Colletotrichum* Species Associated with Anthracnose Disease in Tropical Fruit Crops - A Review. Agriculture. 2021;11(297). <https://doi.org/10.3390/agriculture11040297>
16. Scot C Nelson. Mango anthracnose (*Colletotrichum gloeosporioides*). Plant Disease. 2008;48
17. Krishna Kumar Patel, Khan MA, Yogesh Kumar, Arun Kumar Yada. Novel Techniques in Post Harvest Management of Mango an Overview. South Asian Journal of Food Technology and Environment .2019;5(2):821-835.
18. Bordoh PK, Ali A, Dickinson M, Siddiqui Y, Romanazzi G. A review on the management of postharvest anthracnose in dragon fruits caused by *Colletotrichum* spp. Crop protection. 2020;1(130):105067. <https://doi.org/10.1016/j.cropro.2019.105067>
19. Nasir Uddin MD, Shoaibe Hossain Talukder Shefat, Mansura Afroz, Nusrat Jahan Moon. Management of Anthracnose Disease of Mango Caused by *Colletotrichum gloeosporioides*: A Review. Acta Scientific Agriculture 2018; 2:10
20. Arauz LF. Mango anthracnose: Economic impact and current options for integrated management. Plant Disease. 2000;84:600–611. <https://doi.org/10.1094/PDIS.2000.84.6.600>
21. Freeman S, Katan T, Shabi E. Characterization of *Colletotrichum* species responsible for anthracnose diseases of various fruits. Plant Dis. 82:596-605. <https://doi.org/10.1094/PDIS.1998.82.6.596>
22. Uddin M, Shefat S, Afroz M, Moon N. Management of anthracnose disease of mango caused by *Colletotrichum gloeosporioides*: A review. Acta Scientific Agriculture. 2018;2(10):169-77.
23. Jenny F, Sultana N, Islam MM, Khandaker MM, Bhuiyan MBA. A review on anthracnose of mango caused by *Colletotrichum gloeosporioides*. Bangladesh Journal of Plant Pathology. 2019;35:65-74
24. Memon A, Marri MYK, Khushk AM. Estimation of mango post-harvest losses in Sindh. International Journal of Life Sciences. 2013;7(1):2827-2832.
25. Johnson GI, Hofman PJ. Postharvest technology and quarantine treatments. The mango: botany, production and uses. 2009;529-605.
26. Peres NA, Timmer LW, Adaskaveg J, Correll JC. Life cycles of *Colletotrichum acutatum*. Plant Disease. 2005;89:784–796. <https://doi.org/10.1094/PD-89-0784>
27. Akem CN. Mango anthracnose disease: Present status and future research priorities. Plant Pathology Journal. 2006;5(3):266-73.

28. Alvindia DG, Acda MA. The antagonistic effect and mechanisms of *Bacillus amyloliquefaciens* DGA14 against anthracnose in mango cv. 'Carabao'. *Biocontrol Science and Technology*. 2015;25(5):560-72. <https://doi.org/10.1080/09583157.2014.996738>
29. Govender V, Korsten L, Sivakumar D. Semi-commercial evaluation of *Bacillus licheniformis* to control mango postharvest diseases in South Africa. *Postharvest Biology and Technology*. 2005;38(1):57-65.
30. Bhuvaneswari V, Rao MS. Evaluation of *Trichoderma viride* antagonistic to post harvest pathogens on mango. *Indian Phytopathology*. 2001;54:493-494. <https://epubs.icar.org.in/index.php/IPPJ/article/view/19139>
31. Abd-Alla MA, Haggag WM. Use of some plant essential oils as post-harvest botanical fungicides in the management of anthracnose disease of Mango fruits (*Mangifera indica* L.) caused by *Colletotrichum gloeosporioides* (Penz). *International journal of agriculture and forestry*. 2013;3(1):1-6.
32. Amin M, Malik AU, Khan AS, Javed N. Potential of fungicides and plant activator for postharvest disease management in mangoes. *International Journal Agricultural Biology*. 2011;13:671-676.
33. Talhinhos P, Gonçalves E, Sreenivasaprasad S, Oliveira H. Virulence diversity of anthracnose pathogens (*Colletotrichum acutatum* and *C. gloeosporioides* Species Complexes) on eight olive cultivars commonly grown in Portugal. *European Journal of Plant Pathology*. 2014;142:73-83. <https://doi.org/10.1007/s10658-014-0590-7>
34. Freeman S, Katan T, Shabi E. Characterization of *Colletotrichum* species responsible for anthracnose diseases of various fruits. *Plant Disease*. 1998;82:596-605. <https://doi.org/10.1094/PDIS.1998.82.6.596>
35. Giblin FR, TanYP, Mitchell R, Coates LM, IrwinJAG, Shivas RG. *Colletotrichum* species associated with pre-and post-harvest diseases of avocado and mango in eastern Australia. *Australasian Plant Pathology*. 2018;47:269-276. <https://doi.org/10.1007/s13313-018-0553-0>
36. ChowdappaP, Mohan Kumar SP. Existence of two genetically distinct populations of *Colletotrichum gloeosporioides* Penz in mango from India. *Pest Management in Horticultural Ecosystem*. 2012;18:161-170.
37. Jayasinghe CK, Fernando THPS. First report of *Colletotrichum acutatum* on *Mangifera indica* in Sri Lanka. *Journal of biological science*. 2009;38:31-34.

38. Sharma G, Kumar N, Weir BS, Hyde KD, Shenoy BD. The ApMat marker can resolve *Colletotrichum* species: a case study with *Mangifera indica*. *Fungal Diversity*. 2013;61:117-38. <https://doi.org/10.1007/s13225-013-0247-4>
39. Phoulivong S, McKenzie EH, Hyde KD. Cross infection of *Colletotrichum* species; a case study with tropical fruits. *Current Research in Environmental & Applied Mycology*. 2012; 2(2):99-111.
40. Li Q, Bu J, Shu J, Yu Z, Tang L, Huang S, Guo T, Mo J, Luo S, Solangi GS, Hsiang T. *Colletotrichum* species associated with mango in southern China. *Scientific reports*. 2019;9(1):18891. <https://doi.org/10.1038/s41598-019-54809-4>
41. Lima NB, Batista MVA, Morais Junior MA, Barbosa MAG, Michereff SJ, Hyde KD, Câmara MPS. Five *Colletotrichum* species are responsible for mango anthracnose in northeastern Brazil. *Fungal Diversity*. 2013;61:75–88. <https://doi.org/10.1007/s13225-013-0237-6>
42. Soares AR, Lourenço SA, Amorim L. Infection of guava by *Colletotrichum gloeosporioides* and *Colletotrichum acutatum* under different temperatures and wetting periods. *Tropical Plant Pathology*. 2008;33:265-72. <https://doi.org/10.1590/S1982-56762008000400002>
43. Qin LP, Huang SL, Lin SH. First report of anthracnose of *Mangifera indica* caused by *Colletotrichum asianum* in Sanya city in China. *Plant Disease*. 2017;101:1038. <https://doi.org/10.1094/PDIS-11-18-1980-PDN>
44. Liu XB, Yanli F, Xiaolan Z, Huang GX. First report of papaya anthracnose caused by *Colletotrichum brevisporum* in China. *Plant Disease*. 2019;103:2473. <https://doi.org/10.1094/PDIS-03-19-0539-PDN>
45. Sharma G, Gryzenhout M, Hyde KD, Pinnaka AK, Shenoy BD. First report of *Colletotrichum asianum* causing mango anthracnose in South Africa. *Plant Disease*. 2015; 99:725. <https://doi.org/10.1094/PDIS-08-13-0837-PDN>
46. Latiffah Z, Nurul Zaadah J, Suzianti IV, Intan Sakinah MA. Molecular characterization of *Colletotrichum* isolates associated with anthracnose of mango fruit. *Sains Malaysiana*. 2015.
47. Wu C, Chen H, Ni H. Identification and characterization of *Colletotrichum* species associated with mango anthracnose in Taiwan. *European Journal of Plant Pathology*. 2020;157:1–15. <https://doi.org/10.1007/s10658-020-01964-4>
48. Tovar-Pedraza JM, Mora-Aguilera JA, Nava-Díaz C, Lima NB, Michereff SJ, Sandoval-Islas JS, Câmara MPS, Téliz Ortiz D, Leyva-Mir SG. Distribution and pathogenicity of

- Colletotrichum* species associated with mango anthracnose in Mexico. Plant Disease. 2020;104:137–146. <https://doi.org/10.1094/PDIS-01-19-0178-RE>
49. Alvarez LV, Hattori Y, Deocarís CC, Mapanao CP, Bautista AB, Cano MJB, Naito K, Kitabata S, Motohashi K, Nakashima C. *Colletotrichum asianum* causes anthracnose in Philippine mango cv. Carabao, Australas. Plant Disease. 2020;15:13. <https://doi.org/10.1007/s13314-020-00384-x>
50. Benatar GV, Wibowo A, Suryant. First report of *Colletotrichum asianum* associated with mango fruit anthracnose in Indonesia. Crop Protection. 2021;141:105432. <https://doi.org/10.1016/j.cropro.2020.105432>
51. Kamle M, Kumar P, Gupta VK, Tiwari AK, Misra AK, Pandey BK. Identification and phylogenetic correlation among *Colletotrichum gloeosporioides* pathogen of anthracnose for mango. Biocatal And Agriculture Biotechnology. 2013;2:285–287. <https://doi.org/10.1016/j.bcab.2013.04.001>
52. Alahakoon PW, Brown AE, Sreenivasaprasad S. Cross-infection potential of genetic groups of *Colletotrichum gloeosporioides* on tropical fruits. Physiological and Molecular Plant Pathology. 1994;44:93–103. [https://doi.org/10.1016/S0885-5765\(05\)80104-3](https://doi.org/10.1016/S0885-5765(05)80104-3)
53. Waller JM, Bridge PD. Recent advances in understanding *Colletotrichum* diseases of some tropical perennial crops. In *Colletotrichum: Host Specificity, Pathology, and Host-Pathogen Interaction*; APS Press. 2000;337–345.
54. Ploetz R. Anthracnose: The most important disease in much of the mango-producing world. In PLP News, The Newsletter of the Plant Pathology Department; The University of Florida: Gainesville, FL, USA, 1999; 3: 1–2.
55. Turner M. Physics of cold plasma. In *Cold Plasma in Food and Agriculture*; Misra NN, Schluter O, Cullen PJ, Eds.; Academic Press: San Diego, CA, USA, 2016;17–51. <https://doi.org/10.1016/B978-0-12-801365-6.00002-0>
56. Misra NN, Barun Y, Roopesh MS, Cheorun J. Cold plasma for effective fungal and mycotoxin control in Foods: Mechanisms, inactivation effects and applications. *Comprehensive Review of Food Science and Safety*. 2019;18:106–120. <https://doi.org/10.1111/1541-4337.12398>
57. Wisniewski M, Wilson C, Droby S, Chalutz E, El Ghaouth A, Stevens C. Postharvest biocontrol: New concepts and applications. In *Biological Control: A Global Perspective*; CABI: Cambridge, MA, USA, 2007;262–273. <https://doi.org/10.1079/9781845932657.0262>

58. Asgar A, Noosheen Z, Sivakumar M, Yasmeen S, Alderson PG, Mehdi M. Effectiveness of submicron chitosan dispersions in controlling anthracnose and maintaining quality of dragon fruit. *Postharvest Biology and Technology*. 2013;86:147–153.

<https://doi.org/10.1016/j.postharvbio.2013.06.027>

59. Dofuor AK, Quartey NK, Osabutey AF, Antwi-Agyakwa AK, Asante K, Boateng BO, Ablormeti FK, Lutuf H, Osei-Owusu J, Osei JH, Ekloh W. Mango anthracnose disease: the current situation and direction for future research. *Frontiers in Microbiology*. 2023;14:1168203.

<https://doi.org/10.3389/fmicb.2023.1168203>

UNDER PEER REVIEW