

Original Research article

Impact of Weather Parameters on Seasonal Incidence of Oriental Armyworm, *Mythimna separata* (Lepidoptera; Noctuidae) Infesting Maize Ecosystem in North Kashmir

ABSTRACT

The investigation on the seasonal incidence of oriental armyworm, *Mythimna separata* was conducted at the Faculty of Agriculture, Wadura SKUAST-K during Kharif 2021. Shalimar composite-6 maize variety was cultivated under the standard practices for Kashmir valley, recommended by SKUAST-K. The pest activity during the crop growth period was monitored by using light traps and visual observations. Findings revealed that adult *M. separata* on maize emerged in the 18th standard meteorological week (SMW) with its peak in the 24th week and remained active until the 37th week. Similarly, armyworm caterpillars appeared in the 19th to 37th SMW and reached their peak in the 29th week in the maize ecosystem during 2021. Moreover, the percentage of infestation during the Kharif season was found to be a minimum 10 per cent in the 19th SMW, reaching its peak of 63 per cent in the 29th SMW. The infestation gradually decreased and persisted for eight weeks, with 10 per cent infestation in the 37th SMW. The relationship between adult and weather parameters shows a positive correlation with maximum temperature ($r = 0.14$) and a negative correlation with minimum temperature ($r = -0.22$), morning R.H ($r = -0.52^*$), and evening RH ($r = -0.47^*$). However, *M. separata* populations showed a significant negative association with rainfall ($r = -0.51^*$). Correlations drawn between important weather parameters with the larvae of *M. separata* shows significant positive correlation with maximum temperature ($r = 0.60^{**}$) and minimum temperature ($r = 0.56^{**}$), while morning R.H ($r = -0.36$) evening RH ($r = -0.29$) showed negative association and rainfall ($r = -0.16$) also exhibited negative association with the larval infestation of *M. separata* during Kharif 2021. The study on percentage infestation also demonstrated a significant positive correlation with maximum temperature ($r = 0.47^*$) and minimum temperature ($r = 0.53^*$), while morning relative humidity ($r = -0.22$) and evening relative humidity ($r = -0.29$) showed negative associations. Rainfall ($r = -0.20$) displayed a negative correlation with the percentage infestation of *M. separata*.

Keywords: Maize, *Mythimna separata*, seasonal incidence, weather parameters

INTRODUCTION

“Maize (*Zea mays* L.) holds the global top ranking among food crops, followed closely by wheat and rice, and is renowned for its versatility across various agro-ecological locations worldwide” [21]. “Termed a 'miracle crop' due to its extensive economic applications, maize serves as a vital industrial raw material for the production of glucose, starch, dextrin, corn flakes and corn oil meets nutritional needs” [2]. Additionally, maize contributes to the production of pharmaceuticals and alcoholic beverages, and its cobs find utility in various applications such as cleaning, brushing, polishing, and serving as carriers for pesticides, rubber compounds, and tires [1]. “In India, maize allocation includes 28 per cent for food, 11 per cent for livestock feed, 48 per cent for poultry feed, 12 per cent in the wet milling industry (starch and oil production), and 1 per cent for seed. Referred to as the 'Queen of cereals' maize boasts the highest yield potential among cereal crops globally, playing a crucial role in addressing food security concerns, especially in countries like India with burgeoning populations” [21]. In India, maize cultivation serves various purposes, encompassing human consumption, cattle and poultry feed, food processing, and the extraction of starch, dextrose, corn syrup, and corn oil [8]. “Maize with its composition of approximately 72 per cent starches, 10 per cent protein, and 4 per cent fat, supplying an energy density of 365 Kcal/100 g, faces challenges from a myriad of pests, including insects, nematodes, mites, birds, and rodents. As many as 141 insect pests cause varying degrees of damage to maize from sowing to harvest, with Kashmir Valley experiencing cultivation challenges under rainfed conditions”. [26] Biotic stresses, particularly insect pests, contribute to a 15.6 per cent loss in yield in Kashmir. Maize is attacked by 140 different insect species, with only 12 species identified as serious pests causing damage throughout the cultivation and storage stages [3, 20]. Among these pests, *M. separata* (Walker) emerges as a significant threat to cereal crops and pasture grasses in East Asia, Southeast Asia, Eastern Australia, and certain Pacific Islands [19, 5]. This pest, causing intermittent outbreaks at high densities, leads to complete yield loss [25, 24]. Considering the significance of the maize crop and the economic losses incurred due to *M. separata* during the kharif season, this study aims to investigate the population dynamics of *M. separata* about weather parameters. The goal is to understand the seasonal distribution, activity patterns, polyphagous nature and host habitat-finding behavior in correlation with fluctuations in abiotic weather parameters. The study also seeks to propose precautionary measures to prevent pest outbreaks during the cropping season.

MATERIALS AND METHODS

The investigation was carried out at the Faculty of Agriculture, SKUAST-K Wadurai in 2021 to evaluate the percent infestation, adult and larval population of *M. separata* and their correlation with weather parameters viz, (Temperature, Humidity, and Rainfall) in the maize ecosystem. Maize variety Shalimar composite-6 was planted, according to the standard package of techniques recommended by SKUAST-K for the Kashmir valley. Ten plants were randomly selected from each selected plot for the observations of larval incidence and percent infestation was taken weekly through entire the cropping season.

Percent infestation was calculated by using the formula given below:

$$\text{Per cent infestation} = \frac{\text{No. of infested plants}}{\text{Total no of plants}} \times 100$$

Light traps were set up to monitoring the nocturnal moth from dusk to morning to study the adult population of *M. separata*.

“To determine the effects of various weather parameters on percent infestation, adult and the larval populations of *M. separata* were correlated with weather parameters viz. maximum temperature, minimum temperature, relative humidity in morning, relative humidity in evening, and total rainfall. The periodicities of observations at weekly intervals were planned as per the standard weeks during the entire crop season. The data generated was subjected to standard statistical procedure as per”[4].

RESULTS AND DISCUSSION

Adult incidence of Oriental armyworm *M. separata* in maize eco-system

The perusal of data on adult populations of *M. separata* indicates the appearance from the 18th SMW with a minimum population of 1.50 adults per plant and reaches its peak during the 24th SMW with a maximum population of 13.50 adults per trap after reaching its peak, the overall incidence gradually declined and lasted up to 13th SMW with the adult population of 2.00 adults per trap presented in Table-1, Fig.1. Our results are in line with [16] reported that the maximum population catches of 72 moths of rice stem borer during 47th SW.

The perusal of data presented in Table 2 revealed that correlations drawn between important weather parameters with the adult of *M. separata* resulted in positive correlation with maximum temperature ($r = 0.14$) and a negative correlation with minimum temperature ($r = -0.22$). Morning R.H ($r = -0.52^*$) evening RH ($r = -0.47^*$), showed a significant negative association with the *M. separata* adults. Our results are in line with [18] who reported that the abundance of *Leucinodes orbonalis* about some abiotic factors and registered first adult male moth was trapped during 24th SMW from different locations of District Kupwara. The peak population of adult moths was observed during the 34th SMW. He also studied the correlation between abiotic factors and adult moth catch of *L. orbonalis* at all the locations had a positive and significant correlation with minimum temperature, while maximum temperature, rainfall, and relative humidity (evening) had positive and non-significant correlation, though relative humidity (morning) had negative and non-significant correlation during the present study. Furthermore [14] found moth catch to be significant and positively correlated with both maximum and minimum temperature and negatively correlated with relative humidity, whereas rainfall did not influence the trap catch significantly

Larval incidence and correlation of Oriental armyworm *M. separata* with weather parameters in maize eco-system

The data presented in Table-1, Fig.1 on the larval population of *M. separata* was noticed from the 18th SMW with 0.30 larvae/plant and the population reached its peak during the 29th SMW with the maximum population of 4.10 larvae/plant respectively. After the peak, the overall incidence gradually declined and lasted up to six weeks with a larval population of 0.30 larvae/plant at 37th SMW on maize. Our study is in line with [10], who reported maximum peak activity of fall armyworm in the month of March, Similarly [6] observed the infestation and distribution of fall armyworm increasing from January to March month. [11] Also studied that the tobacco caterpillar, *S. lituraw* occurred from first week of August (31st SW) where the mean larval population was 0.21 plant-1, it was gradually

increased and reached to its maximum (7.01 plant-1) by last week of September (39th SW). Thereafter, the population was declined but continuously observed till harvest (0.23 plant-1)

The perusal of data presented in Table 2 revealed that correlations drawn between important weather parameters with the larval *M. separata* show a significant positive correlation with maximum temperature ($r = 0.60^{**}$) and minimum temperature ($r = 0.56^{**}$). Morning R.H ($r = -0.36$), and evening RH ($r = -0.29$) showed a negative association, and rainfall ($r = -0.16$) also exhibited a negative association with the larval infestation of *M. separata*. Our study is in line with [7] who observed the larval population of fall armyworm was positively correlation with maximum temperature ($r = 0.72$), and negatively correlated with both relative humidity (-0.5473) and rainfall (-0.5874) in Perambalur, district of Tamil nadu during Rabi, 2019. The present findings were in line with the [23] who reported that larval population density of fall armyworm was positively and significantly correlated with temperature our findings are also in agreement with [13] who observed temperature significantly affected the density of fall armyworm.

Percent infestation and correlation of Oriental armyworm *M. separata* with weather parameters in maize eco-system

The data indicated in Table-1, Fig.1 reveals the per cent infestation commenced from the 19th SMW at 10 per cent and reached its peak on the 29th SMW with 63 percent infestation and showed a declining trend from the 30th SMW and lasted upto the 8th SMW with 10 per cent infestation on the 37th SMW. The incidence of *M. separata* in our studies was similar to the findings of [22] who reported that the infestation of maize stem borer (*Chilo partellus*) commenced from the 24th standard week till the 40th standard week. The peak leaf infestation was observed in the 32nd SMW at 48.05 per cent from where it started declining and reached to a minimum in 40th standard week 13.05 per cent. Similarly [9] reported that the per cent infestation of stem borers varied during different months and observed the highest infestation 19.22 per cent in the month of August followed by July 15.80 per cent and September 15.10 per cent. The findings of the present study are also in accordance with [15] who reported maximum population; per cent infestation of *S. litura* (Fabricius) on groundnut was observed during 13th SMW with 3.80 larvae per meter row and 60.1 per cent infestation, respectively. [12] Reported the maximum population of stem borer during 37th standard week of September.

The result of the correlation study on per cent infestation revealed that per cent infestation of *M. separata* resulted in significant positive correlation with maximum temperature ($r = 0.47^*$) and minimum temperature ($r = 0.53^*$). Morning R.H ($r = -0.22$) and evening RH ($r = -0.29$) showed a negative association and rainfall ($r = -0.20$) also exhibited negative association with the per cent infestation of *M. separata* presented in Table 2. Our study is almost in close conformity with [17] which observed the maximum temperature was positively correlation with fall armyworm infestation and in addition, observed the relative humidity was negatively correlated with *S. frugiperda* infestation.

Table1: Seasonal incidence of Oriental Armyworm, *Mythimna separata* infesting maize in North Kashmir.

Standard Meteorological Week(SMW)	Kharif season 2021			Weather parameters				
	Adult/trap	Larvae/Plant	Percent Infestation	Maximum Temp. (°C)	Minimum Temp.(°C)	Morning RH	Evening RH	Rainfall
18 th	2.00	0.00	0.00	24.5	9.28	71.85	54.44	0.4
19 th	3.00	0.33	10.00	22.57	10.14	79.57	66.42	3.6
20 th	3.00	0.66	14.00	24.21	8.92	86.85	46.57	1.65
21 th	7.00	0.66	17.00	23.92	8.07	78.28	48.85	1.97
22 th	9.00	1.33	20.00	27.85	11.64	77.28	56.57	0.45
23 th	13.00	1.51	22.00	32.42	15.28	69.14	39.71	0
24 th	13.50	1.73	24.00	27.35	13.64	74.14	50.85	2.07
25 th	9.50	2.50	37.00	28.84	12.14	67	37.71	0.17
26 th	10.50	3.20	41.00	31.21	13.42	60.14	38.57	0.37
27 th	3.00	3.50	53.00	30.44	15.14	69.42	38.14	1.72
28 th	2.00	3.70	57.00	30.04	17.98	76.28	44.14	2.1
29 th	1.50	4.10	63.00	28.7	18.01	82.14	55	1.7
30 th	0.00	3.50	35.00	31.22	19.77	77.85	59.71	7.54
31 th	0.00	1.70	17.00	29.8	17.48	82.85	60	9.4
32 th	0.00	1.50	15.00	29.88	15.3	71.71	54.71	2.25
33 th	2.00	1.30	12.00	29.28	13.61	79.57	46.71	13.25
34 th	3.00	0.50	12.00	32.52	15.51	74.57	40.42	2.1
35 th	5.00	0.20	10.00	29.21	13.5	75.14	45.42	0.51
36 th	4.50	0.30	10.00	31.12	14.94	74.14	44.57	0
37 th	2.00	0.30	10.00	26.64	13.55	83.71	58.71	14.08

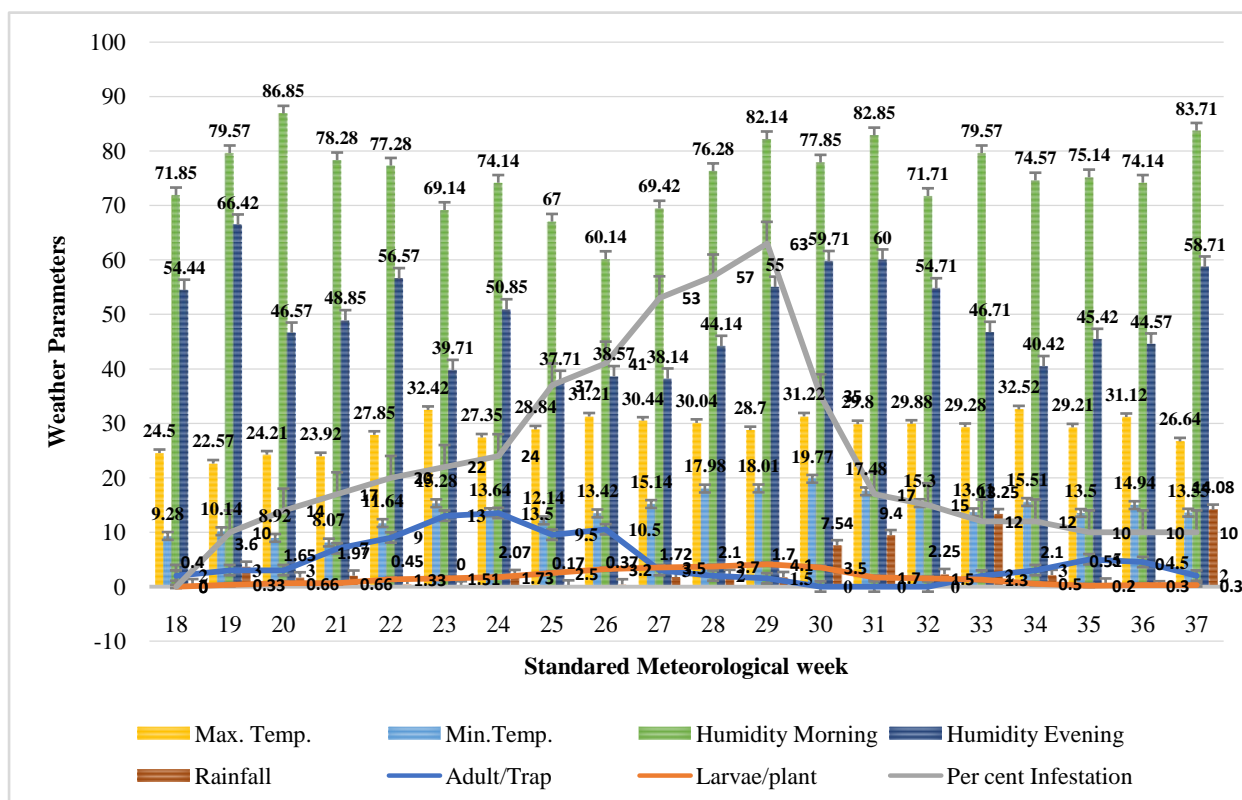


Fig. 1. Seasonal incidence of Oriental Armyworm, *Mythimna separata* infesting maize in North Kashmir.

Table 2: Correlation between weather parameters and weekly observations on adult, larval population and percent infestation of Oriental Armyworm *Mythimna separata*.

Kharif season (2021)	Weather parameters				
	Max.Temp. (°C)	Max.Temp. (°C)	Morning RH	Evening RH	Rainfall
Adult/ plant	0.14	-0.22	-0.52*	-0.47*	-0.51*
Larvae/Plant	0.60**	0.56**	-0.36	-0.29	-0.16
Percent Infestation	0.47*	0.53*	-0.22	-0.29	-0.20

CONCLUSION

The research indicates that adult *M. separata* presence on maize commenced in the 18th standard meteorological week peaked in the 24th week, and persisted until the 37th week. In contrast, *M. separata* caterpillars emerged in the 19th SMW, peaked in the 29th week, and remained active until the 37th week in the maize ecosystem during 2021. The minimum infestation of 10 per cent occurred on the 19th SMW, with the peak infestation of 63 per

centobserved on the 29thSMW during the Kharif season. Infestation decreased over eight weeks, reaching 10 per cent on the 37thSMW. Correlation analysis with weather parameters and weekly catches with the adult of *M. separata* shows a positive correlation with maximum temperature ($r = 0.14$) and a negative correlation with minimum temperature ($r = -0.22$) Morning R.H ($r = -0.52^*$) evening RH ($r = -0.47^*$) showed significant negative association and rainfall ($r = -0.51^*$) also showed significant negative association with the *M. separata* adults during Kharif 2021. The perusal of data presented revealed that correlations are drawn between important weather parameters with the larval *M. separata* a significant positive correlation between the larval infestation of *M. separata* and maximum temperature ($r = 0.60^{**}$) as well as minimum temperature ($r = 0.56^{**}$). Morning relative humidity ($r = -0.36$) and evening relative humidity ($r = -0.29$) exhibited negative associations, while rainfall ($r = -0.16$) showed a negative association with larval infestation. Similarly, the percentage infestation of *M. separata* demonstrated a significant positive correlation with maximum temperature ($r = 0.47^*$) and minimum temperature ($r = 0.53^*$). Morning relative humidity ($r = -0.22$) and evening relative humidity ($r = -0.29$) showed negative associations, while rainfall ($r = -0.20$) exhibited a negative association with the percentage infestation.

ACKNOWLEDGEMENT

The authors are highly thankful to the Division of Entomology, SKUAST-K Wadura for their support and the necessary facilities they provide throughout the period of investigation to carry out this research work.

COMPETING INTRESTS

We, all the authors declare that no competing interests exist.

REFERENCES

1. Ashfaq, M. and Ahmad, K. F. (2002). Overwintering population of maize stem borer, *Chilo partellus* (Swinhoe) at high altitudes of Kashmir. Online Journal of Biological Sciences, 2(1): 1-4.
2. Bibi, Z., Khan, N., Akram, M., Khan, Q., Khan, M. J., Batool and S., Makhdum, K. (2010). Integrating cultivars with reduced herbicides rates for weed management in maize. Pakistan Journal of Botany, 42(3): 1923-1929.
3. Dhaliwal, G. S. and Arora, R. (2006). Integrated pest management: concepts and approaches. Kalyani Publishers, Ludhiana / New Delhi, pp. 18
4. Gomez, K. A. and Gomez, A. A. (1984). Statical Procedures for Agricultural Research, 2nd edition, Wiley-Interscience, New York, pp. 653
5. He YQ, Bo F, Guo QS, Du YJ (2017) Age influences the olfactory profiles of the migratory oriental armyworm *Mythimna separata* at the molecular level. BMC Genom 18:32.
6. Huang Y, Dong Y, Huang W, Ren B, Deng Q, Shi Y, Ma H. Overwintering Distribution of Fall Armyworm (*Spodoptera frugiperda*) in Yunnan, China, and Influencing Environmental Factors. Insects. 2020;11(11):805.
7. Kumar NV, Yasodha P, Justin CGL. Seasonal incidence of maize fall armyworm *Spodoptera frugiperda* (JE Smith) (Noctuidae; Lepidoptera) in Perambalur district of Tamil Nadu, India. Journal of Entomology and Zoology Studies. 2020;8(3):1-4.

8. Mallapur CP, Anjan Kumar Naik, Sireesh Hagari, Prabhu ST, Patil RK. Status of alien pest fall armyworm, *Spodoptera frugiperda* (JE Smith) on maize in Northern Karnataka. Journal of Entomology and Zoology Studies. 2018; 6:432-436.
9. Mallapur, C. P., Chouraddi, M., Nayaka, P., Prashant, K. and Balikai, R. A. (2012). Incidence and distribution of Maize stem borers in farmer's fields of Karnataka state. Journal of Experimental Zoology India, 15(1): 245-249.
10. Meagher RL, Nagoshi RN. Population dynamics and occurrence of *Spodoptera frugiperda* host strains in southern Florida. Ecological Entomology. 2004;29(5):614-620
11. Mishra, M. K., Pandey, R., Pandey, A., & Shukla, G. (2023). Effect of weather parameters on incidence of lepidopteran defoliators on groundnut in Bundelkhand region of Uttar Pradesh. *Journal of Entomological Research*, 47(3), 559-562.
12. Moses S, Kishor DR, Mishra AK, Ahmad Md. A. Identification and quantification of major insect pests of rice and their natural enemies. *Current Journal of Applied Science and Technology*. 2019;32(2):1-10
13. Murua G, Molina-Ochoa J, Coviella C. Population dynamics of the fall armyworm, *Spodoptera frugiperda* (Lepidoptera: Noctuidae) and its parasitoids in northwestern Argentina. Florida Entomologist. 2006;89(2):175-183.
14. Nayak US, Baral K, Khuntia A, Rath LK. Monitoring of brinjal shoot and fruit borer (*Leucinodes orbonalis* Guenee) through pheromone traps and the impact of abiotic factors on trap catch. Journal of Crop and Weed. 2014a;10(1): 143-146.
15. Palanisamy M, Senthilkumar M, Sathyaseelan V. Seasonal incidence of leaf eating caterpillar, *Spodoptera litura* (Fabricius) in groundnut ecosystem during rabi season. Plant archives 2019;(1):1159- 1163.
16. Priyadharsan R, Muthukumaran N. Impact of abiotic factors on population dynamics of rice stem borer *Scirpophaga incertulas* (Walker) and leaf folder *Cnaphalocrocis medinalis* (Guenee). Plant Archives. 2020;20(1):3323-3327.
17. Reddy KJM, Kumari K, Saha T, Singh SN. First record, seasonal incidence and life cycle of fall armyworm, *Spodoptera frugiperda* (JE Smith) in maize at Sabour, Bhagalpur, Bihar. Journal of Entomology and Zoology studies. 2020;8(5):1631-1635.
18. Shah, I. M., Wani, A. R., Mir, S. H., Farook, U. B., Sheikh, M. A., Ayoub, L., Ain, U.N., Fayaz, T.P., Farooq, Z., Rasool, J., War, A. W., Nisa, R. T. (2023). Role of Agrometeorological Factors in Regulating the Abundance of Brinjal Shoot and Fruit Borer (*Leucinodes orbonalis*) in District Kupwara, India. International Journal of Environment and Climate Change, 13(8), 1255-1261.
19. Sharma HC, Davies JC (1983) The oriental armyworm, *Mythimna separata* (Wlk.) distribution, biology and control: a literature review. Miscellaneous report No 59. Overseas Development Administration, Wrights Lane
20. Siddiqui, K. H. and Marwaha, K. K. (1993). The vistas of maize entomology in India. Kalyani Publishers, New Delhi, pp. 1-2.
21. Singh, C., Singh, R. and Singh, P. (2012). Maize- Modern Techniques of Raising field Crops. Oxford and IBH Publishing Company Private Limited, New Delhi, pp. 84-111.
22. War, W. A., Hakeem, S. A., bin Farook, U., Rasool, J., Shah, I. M., Bashir, S., Sheikh, S. A. Studies on Infestation of Maize Stem Borer *Chilo partellus* (Swinhoe) (Lepidoptera:

Crambidea) in North Kashmir. *Biological Forum – An International Journal*, 14(1): 1225-1229

23. Yang XM, Song YF, Sun XX, Shen XJ, WU QL, Zhang HW, et al. Population occurrence of the fall armyworm, *Spodoptera frugiperda* (Lepidoptera: Noctuidae), in the winter season of China. *Journal of Integrative Agriculture*. 2021;20(3):772-782.
24. Zeng J, Jiang YY, Liu J (2013) Analysis of the armyworm outbreak in 2012 and suggestions of monitoring and forecasting. *Plant Prot* 39:117–121
25. Zhang YH, Zhang Z, Jiang YY, Zeng J, Gan YB, Cheng DF (2012) Preliminary analysis of the outbreak of the third-generation armyworm *Mythimna separata* in China in 2012. *Plant Prot* 38:1–8.
26. Nivetha TK, Srinivasan G, Shanthi M, Gurusamy A, Vellaikumar S. Seasonal incidence and influence of weather factors on the incidence of *Spodoptera frugiperda* (JE Smith) on maize. *The Pharma Innovation Journal*. 2022;11(6):407-10.