

## Effect of cadmium chloride administration and restraint stress on cardiac function of female Wistar rats.

### ABSTRACT

Psychological stress which is becoming an epidemic due to continental economic meltdown, wars, climate change, disasters has reached a point of global health concern and can be mimicked in rats by restraint stress model. Cadmium chloride is a heavy metal whose exposure can be through inhalation, drinking contaminated water, sheltering and watering. This study therefore evaluated the combined effects of restraint stress and cadmium chloride on cardiac function of female Wistar rats. Twenty four female Wistar rats were randomly divided into four groups of six rats each. Control (CTL) group received only water and animal feed *ad libitum*. Restraint stress (RSS) group was restrained using wire mesh for 30 minutes each day for 21 days. Cadmium chloride (CDC) group received 100mg/kg b.w of Cadmium chloride orally and daily for 21 days. Restraint stress and Cadmium chloride group (RSC) was restrained for 30 minutes and received Cadmium chloride (100mg/kg) daily for 21days. Twenty four hours after the last procedures, the ECG of the rats was taken and then all rats were anesthetized and their blood collected for biochemical assay. Their hearts were also removed for histology studies. The result showed that restraint stress and cadmium chloride caused an altered electrical conductivity of the heart independently and their combination caused an exacerbated effect. The serum troponin I (cTnI), Lactate dehydrogenase (LD), Creatine kinase (CK) were significantly ( $p < 0.05$ ) higher in RSS and CDC groups when compared with the control however the LD level was significantly higher in the RSC group when compared with other groups. Histology of the hearts of the rats indicated that both restraint stress and cadmium chloride caused necrosis in the hearts of the rats. In conclusion, the combined exposures to cadmium chloride administration and restraint stress have exacerbated deleterious effects on cardiac function of female Wistar rats.

**Comment [o1]:** Cadmium chloride is not a metal but salt of a heavy metal

## 1. Introduction

Environmental pollution is the contamination of the natural environment such as water, soil and air by a pollutant. This pollution creates a bioavailability of the pollutant to the living organisms living in the environment and may therefore have adverse effects on the organisms (Manisalidis *et al.*, 2020).

Comment [o2]: Not in the reference

Environmental pollution is a major global concern with far-reaching consequences for human health, ecosystems, and the economy. Pollution can take many forms, including air pollution from industrial emissions and vehicle exhaust, water pollution from industrial effluents, agricultural runoff, soil pollution from pesticides, heavy metals, and improper waste disposal. The contributions of heavy metals as one of the major environmental pollutants have reached the level of global concerns (Mitra *et al.*, 2022).

Comment [o3]: Not in the reference

Cadmium (Cd), commonly considered a toxicant that does not have any reported physiological function (Carocci *et al.*, 2016). Occupational and environmental exposure are the major route through which Cd can be contacted majorly through contaminated food and smoking (Charkiewicz *et al.*, 2023). In ocean water, the level of Cd has been shown to be <5 to 110 ng/l (Stannard *et al.*, 2024). It can also be emitted to the environment through volcanic activity, weathering of Cd-containing rocks, sea spray, mining, fossil fuel combustion (Zulfiqar *et al.*, 2023) corrosive reagent, as well as its use as a stabilizer in PVC products, color pigments. Ni-Cd batteries are one of the heavy metals with the highest level of bioavailability to humans and animals through food, water, inhalation, skin and other routes. Cadmium chloride has been reported to have various deleterious effects on several body systems.

Comment [o4]:

Comment [o5]: Italicize all

Restraint stress is a laboratory form of psychological stress. The utilization of restraint stress and immobilization is a commonly used method in laboratory settings to induce behavioral and physiological alterations related with stress in rats (Molina *et al.*, 2023). These alterations have been observed to lead to the manifestations of dysfunctions in various organ systems. Since restraint stress is a form stress, it typically triggers the activation of the hypothalamic-pituitary-adrenal (HPA) axis and the sympatho-adrenomedullary system which ultimately leads the release of corticosterone and epinephrine/norepinephrine respectively. These end-point hormones would eventually be responsible for most of the cellular stress responses (Herman *et al.*, 2016). Studies have shown that restraint stress disrupted gastrointestinal system, altered feeding behavior and caused body weight fluctuations (Yau and

Potenza, 2013) male reproductive system dysfunction (Procópio et al., 2023), neurobehavioral impairments (Chu et al., 2016). Chronic stress have been reported to exhibit physiological responses similar to those present in depression (Wang et al., 2017)

The heart is a muscular pumping organ. It receives blood from various systems of the body and also pumps blood to the different systems of the body. The blood pumped by the heart contains the various elements needed for the survival of the components of the body systems and also contains the waste products of metabolism to be transported to the excretory organs (Mollovaet *al.*, 2013). The survival of the systems therefore depends heavily on the ability of the heart to receive blood from these organ systems and to pump blood to them. Reduced activity of the heart will therefore cause a disruption in the supply of adequate blood to these organ systems and could lead to adverse consequences (Huang, 2019). This study therefore is to assess the combined impact of psychological stress model and heavy metal pollutant on the cardiac function of female Wistar rats .

## 2. Materials and Methods

### 2.1 Chemicals and Compounds

Cadmium Chloride, Normal saline, Distilled water, Methylated spirit, Formosaline, Phosphate buffer saline were obtained from the Central Laboratory Complex, LAUTECH, Oyo State, Nigeria.

2.2 Twenty four (24) female Wistar rats were obtained from a reputable commercial rat seller in ogbomoso, Nigeria and randomly grouped into four with six (6) rats in each group. The rats were acclimatized for 14 days at the site of the experiment and the experiment was conducted for 21 days thereafter. The control group (CTL) rats received animal feed and water only *ad libitum* throughout the period of the experiment. Restraint stress alone group rats (RSS) were each restraint for 30 minutes daily for 21 days. Cadmium Chloride alone group (CCC) rats each received Cadmium Chloride (100 mg/kg) orally and daily for 21 days. Restraint stress and Cadmium Chloride group (RSC) rats each received Cadmium Chloride (100 mg/kg) orally and daily and also restraint for 30 minutes daily for 21 days.

**Procedure:** The animals were restraint according to the method described by Thongronget al. (2023). Each rat was placed in a carved wire mesh which is according to the length of each rat in a prone

**Comment [o6]:** This should be change to reagents. The right chemistry word is reagent

**Comment [o7]:** Ogbomoso

**Comment [o8]:** Not in the reference

position. The mesh was carved such that it does not cause compression and pain to the rats. The mesh was worn round the rat such that head and tail of the rat can move freely in the wire mesh.

Cadmium Chloride was prepared daily by dissolving it in distilled water and administered orally according to the dosage (100mg/kg b.w) using an oral cannula daily.

**Comment [o9]:** Dissolving how many grams in how many ml of distilled water. This must be specified

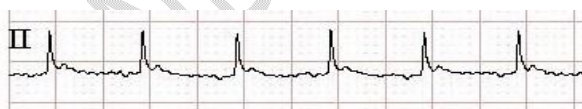
**Comment [o10]:** All units should be separated from the numbers. 100 mg/kg

Twenty four hours after the last administration and restraint stress exposure, the Electrocardiograph (ECG) of each rat was determined using digital ECG machine, EDAN 10 Veterinary ECG. Each rat was anaesthetized with Ketamine and Xylazin. Each electrode was attached to their corresponding positions. Right and left legs, right and left arms and the heart. The resting ECG recording was done in one minute for each of the rats and the recording was saved. Cardiac puncture was then conducted on each of the anaesthetized rat to collect blood into plain sample bottles for biochemical analysis. The clotted blood was thereafter placed in a centrifuge where they were spun at a revolution of 2,500 revolutions/ minute for 10 minutes to obtain the serum upon which the biochemical assays were performed. The hearts of the rats were each removed, washed and prepared for Hematoxylin and Eosin (H&E) staining.

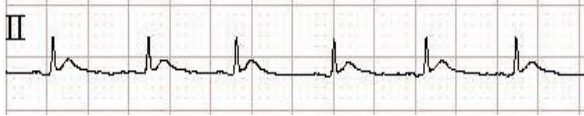
**Data analysis:** Data is expressed as Mean±SEM. Results were analysed using one-way ANOVA followed by duncan *posthoc* test. Differences were considered significant at  $p < 0.05$ .

### 3. Results:

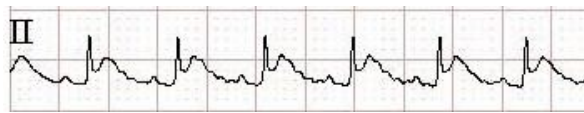
Figures showing the effects of restraint stress and cadmium chloride on the ECG of female Wistar rats.



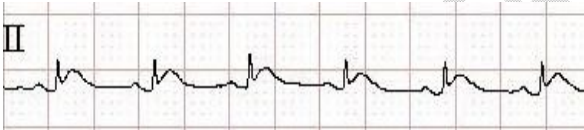
**Figure 1a.** Control group: RR interval is regular, P and QRS are within normal range



**Figure 1b.** Cadmium chloride alone, QRS reduced P height is low indicating mitral valve impairment.

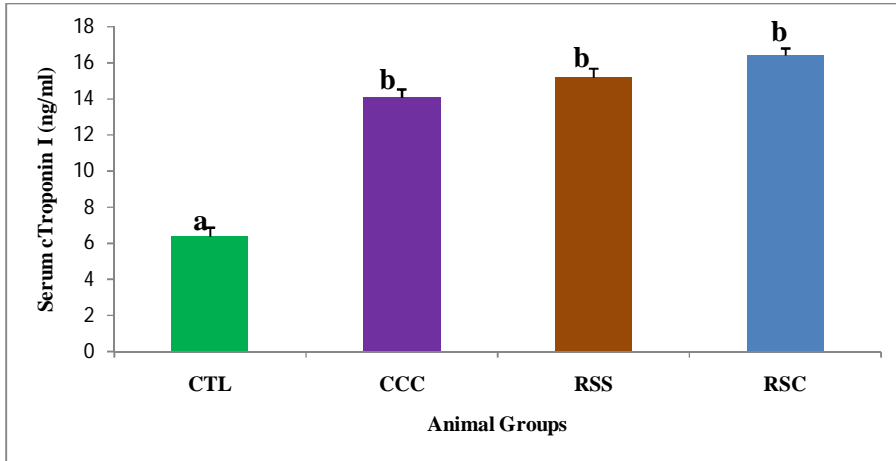


**Figure 1c.** Restraint stress alone group: P is taller indicating delay in atrial depolarization, T height increased indicating myocardial infarction. Increase in the mean heart rate.

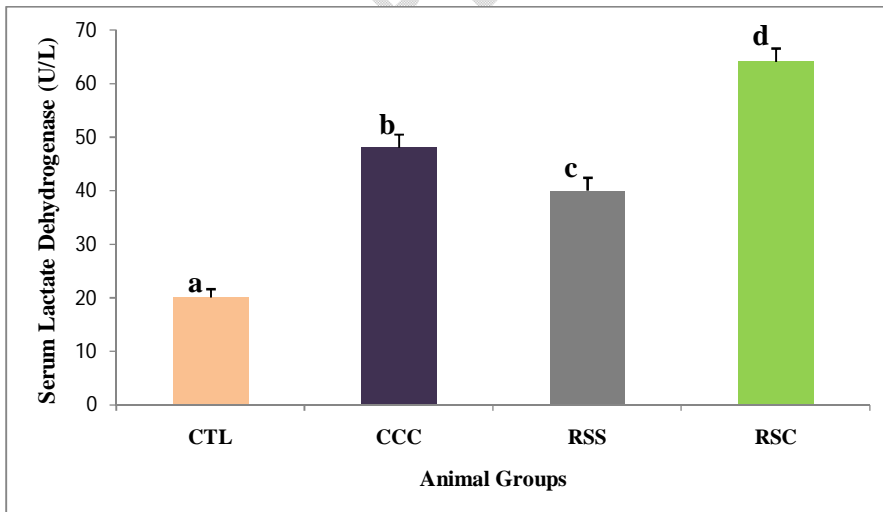


**Figure 1d.** Cadmium chloride and Restraint Stress group: Height of P increased, T taller than normal in myocardial infarction. Tachycardia seen is as a result of Cadmium chloride and Restraint Stress.

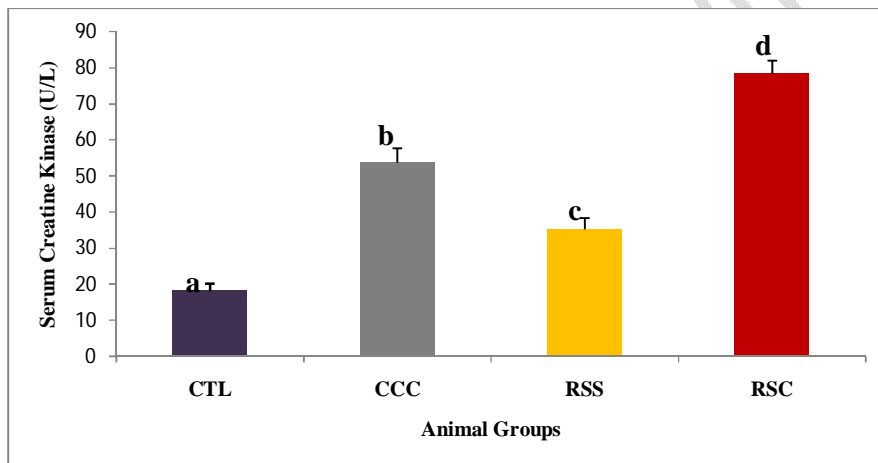
**Figures showing the effect of Cadmium chloride and Restraint Stress on the serum cardiac function biomarkers in female Wistar rats**



**Figure 2. Effect of Cadmium chloride and Restraint Stress on the serum troponin I levels of female Wistar rats.** n=6. Values are expressed as Mean±SEM. Serum cTI levels in the CCC, RSS and RSC groups were independently significantly ( $p<0.05$ ) higher than the CTL. However no significant ( $p<0.05$ ) difference was observed among these groups.



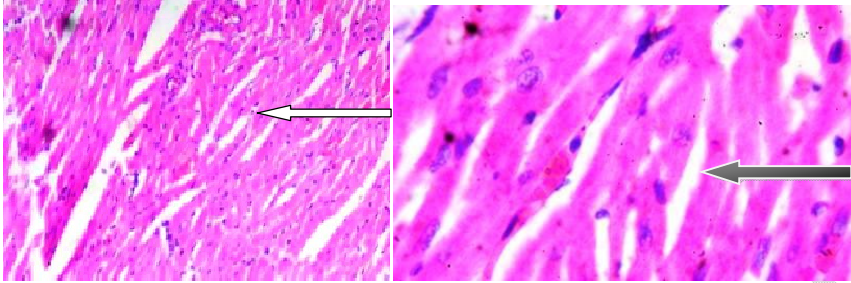
**Figure 3. Effect of Cadmium chloride and Restraint Stress on the serum Lactate Dehydrogenase levels of female Wistar rats.** n=6. Values are expressed as Mean±SEM. Serum LD levels in the CCC, RSS and RSC groups were independently significantly ( $p<0.05$ ) higher than the CTL, However serum LD levels in RSC group was found to be significantly ( $p<0.05$ ) higher than both RSS and CCC groups. Also the serum LD levels in CCC group was found to be significantly ( $p<0.05$ ) higher than that of RSS.



**Figure 4. Effect of Cadmium chloride and Restraint Stress on the serum Creatine Kinase levels of female Wistar rats.** n=6. Values are expressed as Mean±SEM. Serum CK levels in the CCC, RSS and RSC groups were independently significantly ( $p<0.05$ ) higher than the CTL, However serum CK levels in RSC group was found to be significantly ( $p<0.05$ ) higher than both RSS and CCC groups. Also the serum CK levels of CCC group was found to be significantly ( $p<0.05$ ) higher than that of RSS.

#### Histology of the Heart

##### Control

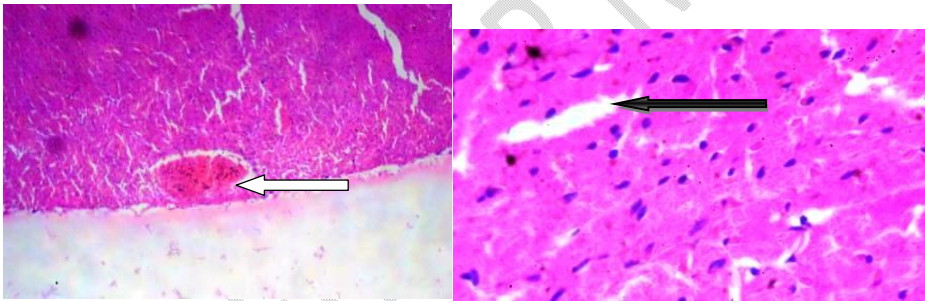


X100

X400

**Figure 5a.** Photomicrograph of a heart section stained by Haematoxylin and Eosin showing normal epicardial layer (white arrow) and normal myocardial layer seen (black arrow), the myocytes are normal

Restraint Stress alone

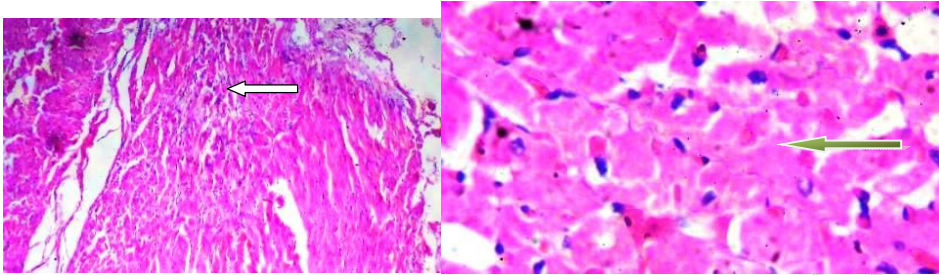


X100

X400

**Figure 5b.** Photomicrograph of a heart section stained by Haematoxylin and Eosin showing epicardial layer with mild vascular congestion (white arrow) and myocardial layer appear normal (black arrow), the myocytes are normal

Cadmium Chloride alone

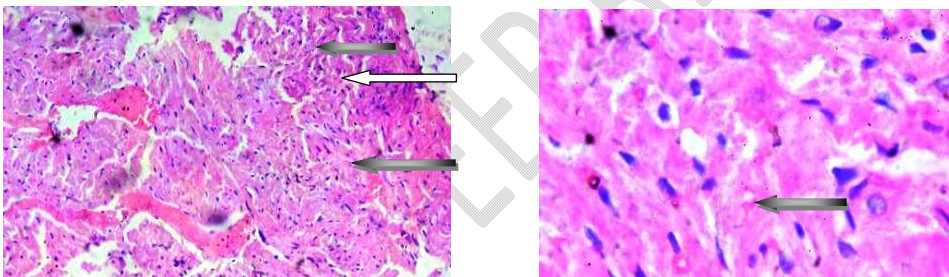


X100

X400

**Figure 5c.** Photomicrograph of a heart section stained by Haematoxylin and Eosin showing mild epicarditis; (white arrow) and there are myocytes with necrosis seen (green arrow)

#### Restraint Stress and Cadmium Chloride



X100

X400

**Figure 5d.** Photomicrograph of a heart section stained by Haematoxylin and Eosin showing epicardial layer with mild infiltrates (white arrow) and myocardial layer show moderately degenerated myocytes with necrosis (black arrow)

#### Discussion

The ECG result of this study showed that QRS complex was reduced, P height was low in the CCC group. This ECG result indicates mitral valve impairment. Mitral valve impairment, also known as mitral regurgitation or mitral valve insufficiency is characterized by the reversal of blood flow from the left ventricle to the left atrium typically in the systolic phase of the cardiac cycle which could be as a result of

**Comment [o11]:** In your discussion you are suppose to reference your results from the figures. For instance, ECG result in Fig 1a showed..... Discuss your result with reference to the figures

myocardial infarction or dilated cardiomyopathy (McCarthy and Collier, 2018). Low P height indicates decreased P-wave amplitude which is correlated with a previous study of Protsenko et al., 2020 where decreased in P-wave amplitude and myocardial stiffness was observed following cadmium intoxication in rats. Cadmium induces reactive oxygen species (ROS) production, which triggers inflammatory signaling pathways (Saeidi et al., 2024). Chronic inflammation promotes cardiac fibrosis (Turkcan et al., 2015), characterized by excessive extracellular matrix (ECM) deposition. This occurs due to the activation of cardiac fibroblasts into myofibroblasts, which secrete collagen and other ECM components. In a healthy state, resident CFs maintain a relatively quiescent state, which is responsible for preserving the homeostasis of the ECM cardiac structure and aiding in electrophysiological conduction (Travers et al., 2016). However, under pathological conditions, such as MI or chronic pressure overload, CFs undergo phenotypic changes, become activated, and contribute to cardiac remodeling and fibrosis (Chen et al., 2016). Over time, this leads to stiffening of the myocardium, reduced compliance, and impaired valve dynamics.

Comment [o12]: Protsenko et al., (2020)

Restraint Stress increased P-wave, taller T and increased heart rate. Taller P Wave is indicative of atrial hypertrophy and its associated with increased heart rate. This phenomenon can be correlated to a previous study where acute mental stress induced abnormal p Wave and increases heart rate in women but not in men (Almuwaqqat et al., 2022). Exposure to stress activates the sympathetic nerve system (SNS) which in response increases heart rate, contractility, vasoconstriction, the level of epinephrine and norepinephrine secreted by the adrenal medulla and sympathetic nerves, respectively. Cardiac hypertrophy serves as an adaptive response to increased workload. However, when this increased workload becomes chronic, the compensatory hypertrophy transitions into pathological hypertrophy (Dhaiba et al., 2023). The result in the Cadmium chloride and Restraint Stress group showed Height of P increased, T taller than normal in myocardial infarction. Tachycardia seen is as a result of Cadmium chloride and Restraint Stress. This result suggests that the combined exposure to cadmium and restraint stress significantly altered cardiac conductivity.

Comment [o13]: et al

Comment [o14]: not referenced

The result of the current study showed that the troponin I level of the restraint stress alone group was significantly ( $p < 0.05$ ) higher than the control (Figure 1). Troponin I is the inhibitory component of the troponin regulatory protein complex which actually comprised of three subunits; other component subunits are troponin C and troponin T. All the troponin components are involved in the contractile process of both skeletal and cardiac muscle. However, cardiac troponin I (cTnI) is specific to the heart (Cámara et al., 2020). Though troponin can be detected in the blood of healthy individual at small amounts, when cardiac damage occurs particularly to irreversible levels, cardiomyocytes undergo metabolic changes that eventually lead to further release of troponin (Chaulin, 2022). Based on its specificity, troponin has been considered a potential marker of tissue damage (Lazar et al., 2022) and has been recommended by several international [scientific societies](#) as a diagnostic marker for acute myocardial infarction. Restraint stress stimulates the hypothalamic-pituitary-adrenal (HPA) axis and the hypothalamic-adrenomedullary axis leading to the release of cortisol and epinephrine and norepinephrine respectively. Both of these hormones increase the availability of glucose and rate of oxidative phosphorylation in the mitochondria of cardiomyocytes leading to the generation of reactive oxygen species (ROS). This is then followed by the release of troponin I by any of these possibilities below.

Comment [o15]:

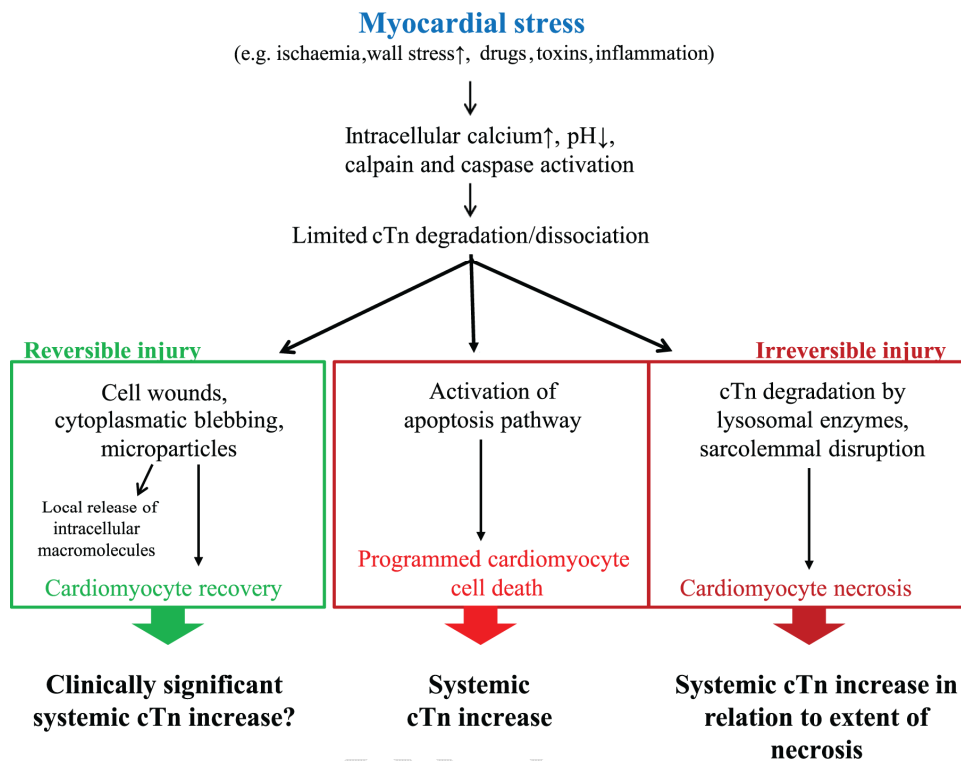


Figure 6. Possible mechanism of Troponin I release from stressed myocardium (Mair et al., 2018)

The result of the current study also indicated that the serum LD (Figure 3) and CK (Figure 4) level of the restraint stress alone was significantly ( $p < 0.05$ ) higher than the control. This is indicative of myocardial infarction. Lactate dehydrogenase is an essential enzyme in the anaerobic pathway involved in the conversion of pyruvate to lactate and back (Zhu et al., 2022) while CK is an enzyme that catalyses the transfer of phosphate groups from high-energy phosphocreatine to ADP thereby regenerating ATP and their leakage from the cardiomyocytes into the blood can be caused by various factors including cell membrane damage, increased membrane permeability, cell necrosis, apoptosis. These factors can be triggered by hypoxia, inflammation and excessive catecholamines exposure. Interestingly, restraint stress has been reported to lead to hypoxia, inflammation and excessive catecholamines exposure through the activation of hypothalamic-pituitary-adrenal (HPA) and the hypothalamic-adrenomedullary axes. The activation of these axes can also lead to ATP depletion in the cardiomyocytes which further impairs the

Comment [o16]: indicative

cellular membrane function. Excessive release of catecholamines can also cause excessive calcium overload in the cardiomyocytes which could disrupts the cell membrane integrity. MAPK signaling, NF- $\kappa$ B activation, PI3K/Akt pathway disruption are also involved in the leakage of LD and CK.

Comment [o17]: excessive

The result of the current study also indicated that CC administration lead to the significant ( $p < 0.05$ ) elevation of the cTn, LD and CK in CC alone group when compared with the control. The release of these three parameters are basically due to their leakage from the cardiomyocytes into the blood. CC have reported to cause these leakages via the following

The histological result showed that restraint stress of 30 mins daily for 21 days has epicardial layer with mild vascular congestion while the myocardial layer appeared normal. This mildness might have resulted from the degree, intensity and duration of the restraint. Subsequent experiment of this kind involving higher intensity and longer duration might probably produce more deleterious effects on the myocytes of the restraint stress group rats.

The examination of the heart of cadmium-exposed group showed mild epicarditis and myocytes with necrosis. This result is consistent with a previous study where early necrosis, apoptosis of the cardiomyocyte, disarrayed myofibrils, and ultrastructural changes in sarcomeres were observed in the Cd exposure group in mice (Chou et al., 2023). Studies have indicated that Cd damages cardiac tissues by causing oxidative damage in DNA, lipids, and proteins and inducing inflammation in the cardiac tissues which may impair cardiomyocyte function and trigger necrosis (Lei et al., 2011). Cd-induced increase in the levels of reactive oxygen species may promote the activation of phosphoinositide 3-kinase (PI3K)-Akt and P38 mitogen-activated protein kinase signaling pathways, which are in a stress-adaptative response (Hu et al., 2018). However, sustained activation of these pathways, combined with mitochondrial dysfunction, calcium overload, and oxidative damage, overwhelms cardiomyocyte survival mechanisms. This ultimately culminates in necrosis characterized by cell swelling, loss of membrane integrity, and inflammatory damage.

The Restraint and Cadmium group showed the combined mechanisms of restraint stress and cadmium exposure induced adverse effects on the heart. however, the mild effects can be due to the duration of

the study. Longer duration might promote more pronounced cardiotoxic effects owing the combined exposure of both stressors.

## Conclusion

Cadmium chloride administration alone seems to produce a more deleterious effects on cardiac function of female Wistar rats than the restraint stress exposure alone. This is reflected in the altered electrical conductivity, increased serum levels of biochemical cardiac function markers and distorted myocytic histological presentations of these female rats. However the exposure of female rats to both cadmium chloride administration and restraint stress produced an higher alteration in the cardiac function of these female rats.

Comment [o18]: a

## DISCLAMIER (ARTIFICIAL INTELLIGENCE)

Author(s) hereby declare that NO generative AI technologies such as large language models (Chatgpt, COPILOT, etc) and text-to-image generators have been used during writing or editing of manuscript.

## INSTITUTIONAL REVIEW BOARD STATEMENT

This study was conducted following the Institutional Animal Care and Use Committee (IACUC) guidelines, in strict compliance with the National Institutes of Health (NIH) guideline for the care and use of laboratory animals.

Comment [o19]: No number was given to this research from IACUC or the ethical clearance committee?

## References

Carocci, A.; Catalano, A.; Lauria, G.; Sinicropi, M.S.; Genchi, G. Lead Toxicity, antioxidant defense and environment. *Rev. Environ. Contam. Toxicol.* 2016, 238, 45–67.

Comment [o20]: Which type of citation did you adopt. Your references are neither alphabetical or numbering method. Work on the reference or a complete overhaul.

Chu, X., Zhou, Y., Hu, Z., Lou, J., Song, W., Li, J., Liang, X., Chen, C., Wang, S., Yang, B., Chen, L., Zhang, X., Song, J., Dong, Y., Chen, S., He, L., Xie, Q., Chen, X., & Li, W. (2016). 24-hour-restraint stress induces long-term depressive-like phenotypes in mice. *Scientific reports*, 6, 32935. <https://doi.org/10.1038/srep32935>

Comment [o21]: Not cited

Genchi G, Sinicropi MS, Lauria G, Carocci A, Catalano A. 2020. The Effects of Cadmium Toxicity. *International Journal of Environmental Research and Public Health*. 17(11):3782.

Comment [o22]: Not cited

Huang SJ. Measuring cardiac output at the bedside. *Curr Opin Crit Care*. 2019 Jun;25(3):266-272.

Mollova M, Bersell K, Walsh S, Savla J, Das LT, Park SY, Silberstein LE, Dos Remedios CG, Graham D, Colan S, Kühn B. Cardiomyocyte proliferation contributes to heart growth in young humans. *Proc Natl Acad Sci U S A*. 2013 Jan 22;110(4):1446-51

Molina, P., Andero, R., & Armario, A. (2023). Restraint or immobilization: A comparison of methodologies for restricting free movement in rodents and their potential impact on physiology and behavior. *Neuroscience and biobehavioral reviews*, 151, 105224.

Yau YH, Potenza MN. Stress and eating behaviors. *Minerva Endocrinol*. 2013 Sep;38(3):255-67. PMID: 24126546; PMCID: PMC4214609.

Herman JP, McKlveen JM, Ghosal S, Kopp B, Wulsin A, Makinson R, Scheimann J, Myers B. Regulation of the Hypothalamic-Pituitary-Adrenocortical Stress Response. *Compr Physiol*. 2016 Mar 15;6(2):603-21. doi: 10.1002/cphy.c150015. PMID: 27065163; PMCID: PMC4867107.

Wang Q, Timberlake MA 2nd., Prall K, Dwivedi Y (2017) The recent progress in animal models of depression. *Prog Neuropsychopharmacol Biol Psychiatry* 77:99–109.

Hjollund N, Bonde J, Henriksen T, et al. Reproductive effects of male psychological stress. *Epidemiology*. 2004;6:21–27.

Procópio, I. M., Ribeiro, C. T., Marchon, R. G., Costa, W. S., Buys-Gonçalves, G. F., Sampaio, F. J. B., Pereira-Sampaio, M. A., & Souza, D. B. (2023). Effects of chronic restraint stress in the prostate of prepubertal and adult rats. *Acta cirurgicabrasileira*, 38, e387123.

Comment [o23]: Not cited

Zhu W, Ma Y, Guo W, Lu J, Li X, Wu J, Qin P, Zhu C, Zhang Q. Serum Level of Lactate Dehydrogenase is Associated with Cardiovascular Disease Risk as Determined by the Framingham Risk Score and Arterial Stiffness in a Health-Examined Population in China. *Int J Gen Med*. 2022;15:11-17

McCarthy, L., & Collier, P. (2018). Diseases of the mitral valve.

Protsenko, Y.L., Klinova, S.V., Gerzen, O.P., Privalova, L.I., Minigalieva, I.A., Balakin, A.A., Lookin, O.N., Lisin, R.V., Butova, K.A., Nabiev, S.R. and Katsnelson, L.B., 2020. Changes in rat myocardium contractility under subchronic intoxication with lead and cadmium salts administered alone or in combination. *Toxicology reports*, 7, pp.433-442.

Saedi, S., Tan, Y., Watson, S. E., Wintergerst, K. A., & Cai, L. (2024). Potential pathogenic roles of ferroptosis and cuproptosis in cadmium-induced or exacerbated cardiovascular complications in individuals with diabetes. *Frontiers in Endocrinology*, 15, 1461171.

Türkcan, A., Scharinger, B., Grabmann, G., Keppler, B. K., Laufer, G., Bernhard, D., & Messner, B. (2015). Combination of cadmium and high cholesterol levels as a risk factor for heart fibrosis. *Toxicological sciences*, 145(2), 360-371.

Travers, J. G., Kamal, F. A., Robbins, J., Yutzey, K. E., & Blaxall, B. C. (2016). Cardiac fibrosis: the fibroblast awakens. *Circulation research*, 118(6), 1021-1040.

Chen, C., Li, R., Ross, R. S., & Manso, A. M. (2016). Integrins and integrin-related proteins in cardiac fibrosis. *Journal of molecular and cellular cardiology*, 93, 162-174.

Almuwaqqat Z, O'Neal WT, Hammadah M, Lima BB, Bremner JD, Soliman EZ, Shah AJ, Quyyumi AA, Vaccarino V. Abnormal P-wave axis and myocardial ischemia development during mental stress. *Journal of electrocardiology*. 2020 May 1;60:3-7.

Cámara, N., Sierra, E., Fernández, A., Arbelo, M., Andrada, M., Monteros, A. E. L., & Herráez, P. (2020). Increased Plasma Cardiac Troponin I in Live-Stranded Cetaceans: Correlation with Pathological Findings of Acute Cardiac Injury. *Scientific reports*, 10(1), 1555

Charkiewicz AE, Omeljaniuk WJ, Nowak K, Garley M, Nikliński J. Cadmium Toxicity and Health Effects—A Brief Summary. *Molecules*. 2023; 28(18):6620.

Chaulin A. M. (2022). The Metabolic Pathway of Cardiac Troponins Release: Mechanisms and Diagnostic Role. *Cardiology research*, 13(4), 190–205.

Lazar, D. R., Lazar, F. L., Homorodean, C., Cainap, C., Focsan, M., Cainap, S., & Olinic, D. M. (2022). High-Sensitivity Troponin: A Review on Characteristics, Assessment, and Clinical Implications. *Disease markers*, 2022, 9713326.

Mair, J., Lindahl, B., Hammarsten, O., Müller, C., Giannitsis, E., Huber, K., Möckel, M., Plebani, M., Thygesen, K., & Jaffe, A. S. (2018). How is cardiac troponin released from injured myocardium?. *European heart journal. Acute cardiovascular care*, 7(6), 553–560. <https://doi.org/10.1177/2048872617748553>

Stannard, L. M., Doherty, A., Chapman, K. E., Doak, S. H., & Jenkins, G. J. (2024). Multi-endpoint analysis of cadmium chloride-induced genotoxicity shows role for reactive oxygen species and p53 activation in DNA damage induction, cell cycle irregularities, and cell size aberrations. *Mutagenesis*, 39(1), 13–23.

Zulfiqar, U., Haider, F. U., Maqsood, M. F., Mohy-Ud-Din, W., Shabaan, M., Ahmad, M., Kaleem, M., Ishfaq, M., Aslam, Z., & Shahzad, B. (2023). Recent Advances in Microbial-Assisted Remediation of Cadmium-Contaminated Soil. *Plants (Basel, Switzerland)*, 12(17), 3147. <https://doi.org/10.3390/plants12173147>

Chou, S. H., Lin, H. C., Chen, S. W., Tai, Y. T., Jung, S. M., Ko, F. H., ... & Chu, P. H. (2023). Cadmium exposure induces histological damage and cytotoxicity in the cardiovascular system of mice. *Food and Chemical Toxicology*, 175, 113740.

Hu, K. H., Li, W. X., Sun, M. Y., Zhang, S. B., Fan, C. X., Wu, Q., ... & Xu, X. (2015). Cadmium induced apoptosis in MG63 cells by increasing ROS, activation of p38 MAPK and inhibition of ERK 1/2 pathways. *Cellular Physiology and Biochemistry*, 36(2), 642-654.

Lei, W., Wang, L., Liu, D., Xu, T., & Luo, J. (2011). Histopathological and biochemical alternations of the heart induced by acute cadmium exposure in the freshwater crab *Sinopotamonyangtsekiense*. *Chemosphere*, 84(5), 689-694.