

Enhanced Cation Exchange Capacity and exchangeable bases in a sandy soil accrossSudanian savanna ecosystem of Bondoukuy, Western Burkina Faso.

Abstract

The Cation Exchange Capacity (CEC) of soil represents its capacity to retain and exchange nutrient cations with plant roots. In Sudanian savannas, sandy soils are characterized by a dominance of coarse particles, which exhibit a low specific surface area and low cation retention capacity, in contrast to clayey soils. A low CEC restricts soil fertility and the capacity of the soil to sustainably provide essential nutrients to plants. It was hypothesized that the CEC of the topsoil in savannas of western Burkina Faso would demonstrate a significant increase due to substantial environmental changes during the fallow period. To test this hypothesis, a comparison was made between soil fertility in savannas and fallows, and that of cultivated plots, which were considered the control for this increase. A total of 15 plots were selected, with five plots allocated to each situation. The vegetation and soil of the plots were described in detail. Composite soil samples were taken from the 0-20 cm horizon. The soil analyses in the laboratory were conducted on several parameters, including texture, pH-H₂O, pH-KCl, carbon, nitrogen, CEC and exchangeable bases. The results of the observations enabled the classification of the soils as tropical ferruginous soils with iron and manganese sesquioxides. The original materials indicate that the soil exhibits sandy properties. This was demonstrated by the granulometric study, which revealed that the soils under investigation exhibited an essentially sandy texture on the surface horizon. This results in a low retention capacity for exchangeable bases. The woody vegetation of the savannas exhibits a greater diversity of flora than that of the fallows. This has a significant impact on the enhancement of the CEC, due to the replenishment of the soil with plant debris of varying organic compositions. The overall pH is slightly acidic, with a range of 5.63 to 5.71. The soils of the savannas exhibit higher concentrations of carbon and nitrogen than those of the fallows and fields. The observation of chemical balances has enabled the identification of savannas as an environment conducive to optimal plant nutrition. Overall, the savannas enhance the CEC and exchangeable bases, despite the values being below the threshold recommended for tropical sandy soils. It is therefore necessary to implement measures to promote sustainable agriculture and enhance agricultural productivity in this region, where soil nutrients are naturally scarce.

Keywords :savanna, fallow, CEC, exchangeable bases, sandy soil, Bondoukuy

1. INTRODUCTION

Cation exchange capacity (CEC) is defined as the number of moles of exchangeable cations adsorbed by electrostatic force per unit mass of soil. It plays an important role in soil nutrient retention (Brady & Weil, 2017) and in regulating soil pH changes (Luo *et al.*, 2015; Xu *et al.*, 2012), thus making it vital for maintaining the structure and function of terrestrial ecosystems. It can affect the structure and function of ecosystems by controlling the supply of exchangeable cations (i.e.,

Ca^{2+} , Mg^{2+} , K^+ , Na^+ , Al^{3+} , and Fe^{3+}) to the soil (Lucas *et al.*, 2011; Mueller *et al.*, 2012). Given that different plant species have varying requirements for concentrations and ratios of calcium, magnesium, potassium, and sodium, alterations in these cations can affect plant biodiversity (Chen *et al.*, 2013). In addition to being essential for plant growth (Likens *et al.*, 1998; McLaughlin and Wimmer, 1999), the availability of these nutrients affects plant tolerance to drought and pathogens (DeHayes *et al.*, 1999; Demchik and Sharpe, 2000), thereby affecting primary productivity and the overall structure of terrestrial ecosystems. Conversely, elevated levels of Al^{3+} and Fe^{3+} have the potential to impede vegetation productivity as a consequence of their toxicity (Lieb *et al.*, 2011). Furthermore, CEC plays a role in maintaining the stability of terrestrial ecosystems by buffering changes in soil acidity (Bowman *et al.*, 2008). Decreased soil pH has the potential to alter biological activity and cation supply, which could have negative impacts on terrestrial ecosystems (Kirk *et al.*, 2010). In the context of environmental change, a comprehensive understanding of the temporal dynamics of CEC is crucial for predicting the responses of ecosystem structure and function and for guiding management policies aimed at maintaining ecosystem stability. In light of the considerable spatial and temporal variations in the determining factors (e.g., climatic factors, edaphic factors, and human activity) of CEC dynamics, a comprehensive investigation of the temporal dynamics of CEC across diverse environmental settings is imperative. Several studies have demonstrated cation loss in soils as a consequence of soil acidification, harvesting, and land use change (Högberget *et al.*, 2006; Lu *et al.*, 2015; Watmough & Dillon, 2003). These studies have provided insights into the spatial variation and environmental drivers of CEC over large geographic scales. However, there is a paucity of knowledge regarding the temporal dynamics of CEC over small spatial scales. However, these observations are limited to the site scale, and it is unclear whether they are representative of a larger ecosystem, such as savannas, forests, fallows, or cultivated areas. Savannas are ecosystems situated between humid forests and semi-arid steppes. They occupy two-thirds of the intertropical space in Africa (Fournier, 1991). It is, however, paradoxically the least well-known environment (Devineau and Guillaumet, 1992). The savanna ecosystem is regarded as a dynamic equilibrium between grass and trees, which is regulated by the decomposition rate and determines the availability of nutrients, plant growth, grass/tree competition and the frequency of fire (Solbrig and Young, 1993). Notwithstanding the poverty and poor structure of the soil, the long dry season, and annual fires, savanna ecosystems demonstrate a high level of primary production (Fournier, 1991). In West Africa, sandy soils are typically deficient in phosphorus (P) and nitrogen (N), and in some cases, they are acidic ($\text{pH} < 7$), which renders crop viability contingent upon the application of fertilizers (Serpantié, 2003). Furthermore, the low organic matter and clay content of sandy soils, coupled with the scarcity of phosphorus and nitrogen and the acidic pH, results in a limited capacity to retain essential nutrients, which ultimately constrains agricultural productivity. It is therefore imperative to enhance the cation exchange capacity (CEC) and exchangeable bases to improve the fertility of sandy soils in Sudanian savannah ecosystems, particularly in West Africa, and specifically in Burkina Faso. In the context of the Sudanian savannas of western Burkina Faso, the issue is further compounded by traditional agricultural practices, climate variability and soil degradation, which serve to further reduce the natural fertility of these soils. This makes it an ideal ecosystem in which to explore CEC dynamics. It was hypothesized that the CEC of the topsoil in the savannas of western Burkina Faso would demonstrate a significant increase due to the substantial environmental changes that occurred during the fallow period. To test this hypothesis, a comparison will be made between the soil fertility of savannas and fallows, with cultivated plots serving as controls. This will facilitate an understanding of the processes by which the CEC and exchangeable bases are enhanced in these sandy soils. The findings will inform the development of tailored agricultural techniques and strategies for enhancing land productivity while maintaining the ecological integrity of these vulnerable ecosystems.

2. MATERIAL AND METHODS

2.1 Study area

The study was carried out in the Bondoukuy region, located in the Sahel-Sudan climatic ecotone. This region represents the cotton production area (Fig. 1). Bondoukuy is situated between $11^{\circ}51'N$ and $3^{\circ}45'W$, with an elevation above sea level of 360 m. The average annual rainfall of the study area is 850 mm, with the maximum rainfall occurring in August. The daily maximum temperature ranges between 31 and $39^{\circ}C$, with an average annual potential evapotranspiration of approximately 1900 mm. The natural vegetation cover in the area is predominantly composed of open woody savannah, whereas the dominant grass biome is *Andropogon gayanus*, *Pennisetum pedicellatum* and *Loudetiatogoensis* (Fournier *et al.*, 2001). For centuries, human activity in Bondoukuy has had a significant impact on the local ecosystem. The primary economic activities in the region are subsistence farming, which is focused on cereal crops, and cash crop farming, which is centred on cotton. Despite the regular ploughing of the most fertile soils, less fertile land is increasingly subjected to a short period of fallowing, with a typical duration of approximately five years. The annual ploughing, based on cotton–maize rotations, typically results in the deterioration of soil structure, increased erosion, and a reduction in soil organic matter content. The second most prevalent activity in the study area is extensive animal husbandry. Consequently, the region is subjected to excessive grazing and faces considerable pressure to meet the demands for aerial biomass (tree bark, firewood and perennial stems) from the local rural communities.

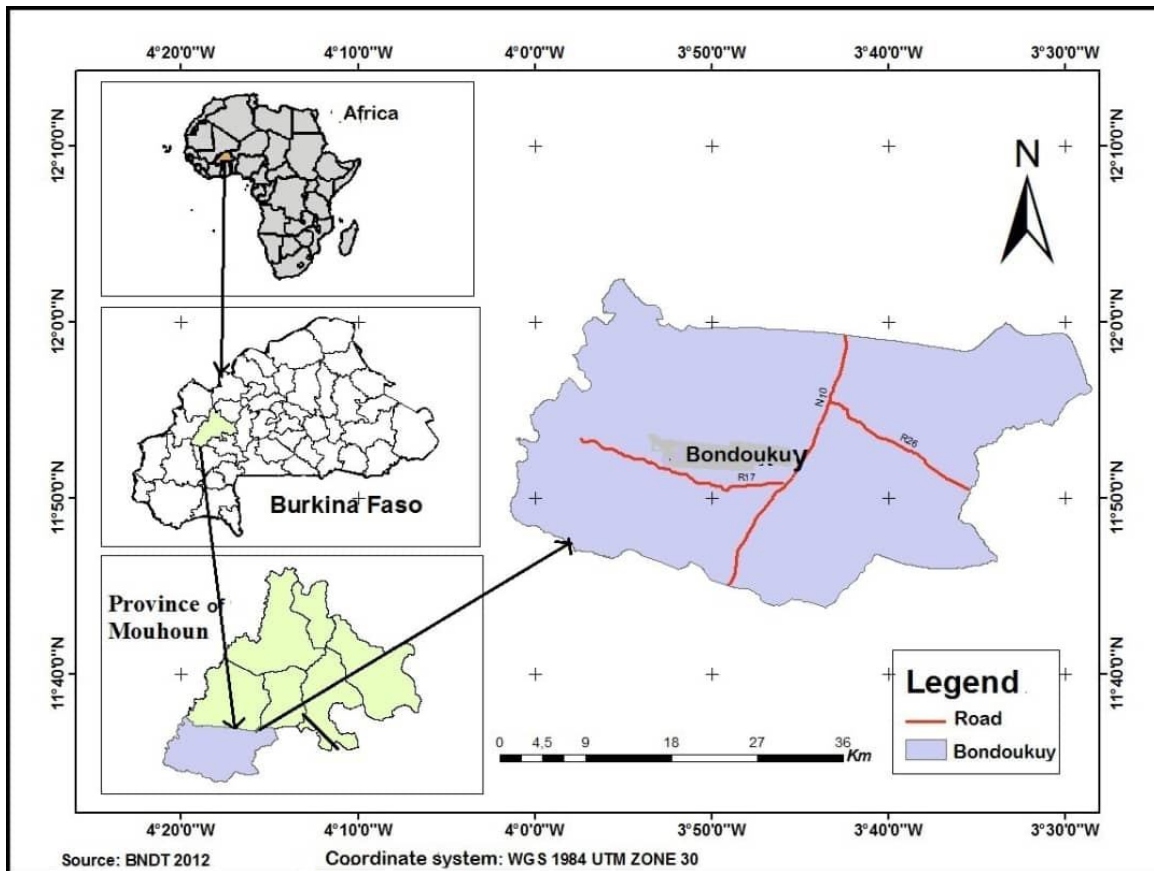


Fig. 1. Location of the study area

2.2 Selection and description of the plots studied

Three distinct situations were selected for analysis, namely savannas, 20-year fallows and fields. Each situation was represented by a sample size of five plots. The control plots, represented here by the fields, have been in permanent cropping for a period exceeding ten years. The old 20-year fallows represent the intermediate stage of fertility restoration, while the Sudanian savannas represent the equilibrium or climax stage, where soil fertility is fully restored. The diverse situations (in cropping or vegetative) and associated activities are described in detail based on comprehensive observations and surveys. The floristic composition of the savannas and fallows was investigated through detailed surveys. The soil profiles were described and identified according to the French classification system (CSPS, 1967), which was further corroborated by the global reference base (FAO-WRB, 2015) and the national Bunasol guidelines (2005). This is to facilitate a more nuanced understanding of the use of the environment and elucidate the disparate values of the physicochemical parameters obtained.

2.3 Measurement of physicochemical parameters

The physicochemical parameters of the soil were studied using composite soil samples obtained with an auger at a depth of 0-20 cm. This layer is of particular interest as it corresponds to the depth mainly explored by the roots. To account for intra-plot variability, five samples were collected from the plot (four from the four corners and one from the centre). These samples were then combined to form a single representative sample. The following physicochemical analyses were conducted.

-Particle size analysis was conducted by sedimentation, following the destruction of organic matter, via the pipette method on an automatic granulometer, with five fractions according to the Atterberg scale (Clays < 2 μm < Fine silts < 20 μm < Coarse silts < 50 μm < Fine sands < 200 μm < Coarse sands < 2 mm) (CIRAD, 2017). Subsequently, the fine and coarse sands were added, reducing the number of fractions to four.

-The C analysis was conducted according to the modified Walkley-Black method (CEAE, 2003), while the N determination was performed using the Kjeldahl method. The Ca, Mg, Na, K and Mn were determined by ICP spectrometry (CIRAD, 2017). The CEC was obtained by continuous flow colourimetric ammonium assay (CIRAD, 2017), while the exchangeable

bases were measured by percolation (CIRAD, 2017). The pH-H₂O and pH-KCl measurements were conducted using an automated titration chain with a sampler (CIRAD, 2017). All of the aforementioned analyses were conducted at the soil biogeochemistry laboratory of the École Normale Supérieure of Paris (ENS).

2.4 Data Analysis

The data were subjected to an analysis of variance (PROC ANOVA) and a simultaneous test of comparison of means by Scheffé (1959), which is regarded as the most effective test for comparing means (Scherrer, 1989). A significance level of 0.5% was employed. The aforementioned analyses were conducted using the Stat View software (SAS, 2020).

3. RESULTS

3.1 Plots soil description

The majority of soils in the area are classified as belonging to the "iron and manganese sesquioxides" soil class. These are tropical ferruginous soils, characterized by a sandy to sandy-silty texture at the surface. These soils are developed on a sandy-clayey substrate, which is sometimes gravelly, derived from autochthonous or non-autochthonous ferrallitic alteration materials. The local alterations and backfills, based on kaolinite, are deficient in weatherable minerals. Kaolinite clay exhibits minimal swelling and shrinkage properties and does not contribute to cation exchange capacity (CEC). The presence of iron oxides, which serve to stabilize the structure of ferrallitic soils and enhance their drainage properties, is observed in the form of spots and concretions within the deeper horizons. The substantial or inadequately developed structure encourages the accumulation of water and the formation of crusts, which impedes the penetration of roots by sensitive plants in the absence of loosening by fauna, the roots of perennial plants, or the use of a tool. These soils are susceptible to water table and rill erosion. Conversely, the resulting high cohesion renders these soils quite resistant to gully erosion. The high erosiveness of the Sudanese climate and the ability to form surface crusting result in selective and insidious water table erosion. Cropping, in its conventional form, is accompanied by erosion, whereas the covering of herbaceous vegetation is sufficient to control.

3.2 Floristic Characteristics

Except for permanent fields, the floristic records obtained characterize the vegetation of Sudanese savanna and fallow lands (Table 1). However, some species are characteristic of fallows, including *Andropogon gayanus* in herbaceous plants and *Pterocarpuserinaceus* in woody plants. This flora remains relatively uniform and less diverse compared to other vegetal formations in the region. In both savanna and fallow land situations, despite the advanced resting stage of the former in comparison to the latter, there is a notable lack of significant floristic richness.

Table 1. Floristic characteristics of the studied sites (most represented species)

Vegetation	Plots		
	Savanna	Fallows lands	Cultivated Fields
Woody species	<i>Terminaliaavicennoïdes</i>	<i>VitellariaParadoxa</i>	<i>Adansoniadigitata</i>
	<i>Combretumglutinosum</i>	<i>Anogeissusleiocarpus</i>	<i>Bombax costatum</i>
	<i>Vitellariaparadoxa</i>	<i>Terminaliaavicennoïdes</i>	<i>Vitellariaparadoxa</i>
	<i>Acacia polyacantha</i>	<i>Pterocarpus erinaceus</i>	<i>Parkia biglobosa</i>
	<i>Acacia sieberiana</i>	<i>Piliostigmathonningii</i>	<i>Lanneaacida</i>
	<i>Desmodiumvelutinum</i>	<i>P. reticulatum</i>	<i>L. microcarpa</i>
	<i>Piliostigmathonningii,</i>	<i>Psorospermumfebrifugum</i>	<i>L. velutina</i>
	<i>P. reticulatum</i>	<i>Brideliaferruginea</i>	
	<i>Anogeissusleiocarpus</i>	<i>Hymenocardiaacida</i>	
	<i>Bombax costatum,</i>	<i>Parinaricuratellifolia</i>	
	<i>Lanneaacida, L. microcarpa,</i>	<i>Strychnos spinosa</i>	
	<i>L. velutinaMayntenus</i>	<i>Lanneaacida,</i>	
	<i>senegalensis,</i>	<i>L. microcarpa</i>	
	<i>Feretiaapodanthera,</i>	<i>L. velutina</i>	
	<i>Strychnos spinosa, Ximenia</i>		
	<i>americana,</i>		
	<i>Parinaricuratellifolia,</i>		
	<i>Sterculia setigera, Entada</i>		

Perennials herbaceous	<i>Andropogon gayanus</i>	<i>Andropogon gayanus</i>	
	<i>Diheteropogon amplexans</i>	<i>Cochlospermum planchonii</i> ,	
	<i>Sida alba</i>	<i>C. tinctorium</i>	
	<i>Dioscorea mangenotiana</i>	<i>Sporobolus festivus</i>	
	<i>Lepidagathis heudelotiana</i>	<i>Tinnea barteri</i>	
	<i>Tephrosia pedicellata</i>		
Annuals herbaceous	<i>Brachiaria latala</i>	<i>Andropogon fastigiatus</i>	<i>Sorghum bicolor</i>
	<i>Chloris pilosa</i>	<i>Evolvulus alsinoides</i>	<i>Gossypium spp</i>
	<i>Loudetiopsis keatingii</i>	<i>Tephrosia pedicellata</i>	<i>Pennisetum</i>
	<i>Crotalaria retusa</i>	<i>Pennisetum pedicellatum</i> ,	<i>typhoides</i>
	<i>Indigoferastenophylla</i>	<i>P. polystachyon</i>	<i>Zea mays</i>
	<i>Borreria stachydea</i> ,	<i>Loudetia hordeiformis</i>	
	<i>Paspalum orbicurrae</i> ,	<i>Borreria stachydea</i>	
	<i>Bulbostylis filamentosa</i>	<i>Rottboelia exaltata</i>	

In Bondoukuy, as is the case with the Sudanese savannas in general, three taxonomic groups of woody plants are particularly prevalent: Leguminous, Combretaceae and Rubiaceae. In arid conditions, the number of Combretaceae species increases, while the number of Leguminous decreases. A similar outcome is observed in the case of herbaceous plants. Conversely, wooded savannas exhibit a paucity of leguminous herbaceous plants, which suggests a proclivity of Leguminous for fallow land. It can be observed that plant formations are organized according to biotopes, but not solely on this basis. Indeed, factors such as fire, temporary cultivation and selective cutting exert a significant influence on the physiognomy and flora of plant formations, particularly during the stages of reconstitution following cropping or certain developments.

3.3 Soil Physical characteristics

The variance analyses unambiguously demonstrate a situation effect concerning texture (Table 2). The savannas exhibit markedly different clay (9.53%), fine silt (6.31%) and coarse silt (16.72%) contents when compared to the fallow lands (7.41% clay, 4.93% fine silt and 10.62% coarse silt) and cultivated plots (6% clay, 3.65% fine silt and 9.99% coarse silt). The rate of fine elements (less than 20 μm) is higher in the savannas than in the other two situations. Notwithstanding the relatively low proportion of sand in the savannas (67.44%) in comparison to fallow land (77.04%) and cultivated plots (80.36%), the rate of coarse elements (>50 μm) is higher than those of fine elements (<20 μm). Which confirms the sandy nature of the soil in all three situations.

Table 2. Soil Physical Characteristics at 0-20 cm depth. The means displaying the same letter per row are not significantly different (n=15, $P < 0.005$), with the standard error represented in parentheses.

Parameters	Plots		
	Savanna	Fallow lands	Cultivated fields
Clays (%)	9.53 ^a (1.63)	7.41 ^b (2.44)	6 ^b (2.71)
Fine silts (%)	6.31 ^a (1.1)	4.93 ^b (3.13)	3.65 ^b (0.97)
Coarse silts (%)	16.72 ^a (7.27)	10.62 ^b (1.57)	9.99 ^b (5.74)
Coarse + Fine sands (%)	67.44 ^a (5.78)	77.04 ^b (8.19)	80.36 ^b (3.24)

3.4 The Organic and acid-base status of soils

The variance analysis demonstrates a highly significant situation effect ($P < 0.0001$) on the distribution of chemical parameters in the 0-20 cm horizons of the soil in the studied situations (Table 3). The Scheffé test enables the

differentiation of the situations at the level of organic matter contents (C, N), exchangeable bases and CEC. The results obtained permit a detailed examination of the dynamics of soil fertility reconstitution and the enhancement of CEC through the investigation of the diverse chemical and organic characteristics of the soil (Table 4).

UNDER PEER REVIEW

Table 3: Results of analyses of variance (ANOVA/SAS) of the effect of situations (savannahs, fallows and cultivated fields) on the chemical characteristics of the soil at depth 0-20 cm, n = 195.

Variables	F _{8,45}	P	R ²	CV
C (%)	50.13	<0.0001	0.90	35.2
N (%)	38.65	<0.0001	0.80	30.12
C/N	20.65	<0.0001	0.56	25.6
pH-H ₂ O	12.34	0.1420	0.27	12.5
pH-KCl	13.63	0.1400	0.19	9.6
Ca ²⁺ (meq.100g ⁻¹)	11.43	0.0230	0.31	19.8
Mg ²⁺ (meq.100g ⁻¹)	18.32	<0.0001	0.73	20.67
Mn ²⁺ (meq.100g ⁻¹)	22.53	<0.0001	0.67	27.32
K ⁺ (meq.100g ⁻¹)	30.15	<0.0001	0.77	22.8
Na ⁺ (meq.100g ⁻¹)	17.80	<0.0001	0.60	26.7
CEC (meq.100g ⁻¹)	16.45	<0.0001	0.79	24.5
SEB (meq.100g ⁻¹)	12.53	0.133	0.25	15.2
SEB/CEC (%)	33.13	<0.0001	0.52	31.5

3.4.1 pH-H₂O and pH-KCl

The results of the statistical analyses conducted on the pH values are not statistically significant (table 3). Conversely, the pH of the various scenarios under examination is acidic, with values ranging from 5.63 to 5.71 for pH-H₂O and from 4.78 to 4.96 for pH-KCl. The findings indicate that despite 20 years of fallow land, the savanna has not resulted in an improvement in soil pH.

3.4.2 Carbon

The analyses conducted on the mean of carbon contents of the various situations yielded statistically significant results, with notable differences observed between the savannas (0.43%), fallows (0.38%), and fields (0.26%) (Table 4). The carbon content increased by 0.16% from the fields to the savannas, and by 0.04% from the fallows to the savannas. Conversely, there is a pronounced decline in the carbon content from the savannas to the fields. The fallow stage thus marks the initial phase of carbon storage, which then accumulates sustainably during the savanna.

3.4.3 Nitrogen

The statistical analysis of nitrogen averages revealed a highly significant situation effect ($P < 0.005$). The nitrogen content of the samples exhibited considerable variation, with values ranging from 0.04% in savannas to 0.02% in fallows and 0.015% in fields (Table 4). A gain of 0.025% is observed from savannas to fields and 0.018% from savannas to fallows. Conversely, the transition from the field to the savanna results in a loss of 0.025%. It can be concluded that the nitrogen content is reconstituted with the fallow and appears to stabilize in the savanna.

3.4.4 C/N ratio

The C/N ratio is an indicator of the degree of decomposition of organic matter. The ratio varies from 13 to 18 and is statistically significant depending on the situation (Table 4). The C/N ratio differentiates between savannahs (C/N=13) and fallows (C/N=18), as well as between fallows and fields (C/N=18). The low C/N ratio observed in savannas suggests that mineralization occurs rapidly, whereas the high C/N ratio observed in fields and fallows indicates that mineralization occurs more slowly, which is indicative of a lack of nitrogen.

Table 4. Soil chemical and acid-bases characteristics at 0-20 cm depth. The means displaying the same letter per row are not significantly different (n=15, $P < 0.005$), with the standard error represented in parentheses.

Parameters	Plots		
	Savanna	Fallow lands	Cultivated fields
C (%)	0.42 ^a (0.03)	0.38 ^a (0.05)	0.26 ^b (0.02)
N (%)	0.04 ^a (0.09)	0.02 ^b (0.02)	0.015 ^b (0.03)
C/N	13a	18b	18b

	(4.43)	(3.47)	(2.86)
pH-H ₂ O	5.63 ^a	5.63 ^a	5.71 ^a
	(0.14)	(0.14)	(0.27)
pH-KCl	4.96 ^a	4.96 ^a	4.78 ^a
	(0.3)	(0.3)	(0.47)

3.5 Nutrient status according to exchangeable bases

Table 5 illustrates the mean levels of soil fertility, as indicated by the average values of CEC and exchangeable bases.

3.5.1 Cation Exchange Capacity (CEC) and Exchangeable Bases

CEC represents the total exchangeable cation content of a soil, comprising the cations Ca²⁺, Mg²⁺, K⁺, Na⁺ and Mn²⁺. The mean CEC values obtained in the various experimental conditions ranged between 6.17 and 3.48 meq.100 g⁻¹ (Table 5). The results of the statistical analyses indicated that there was a significant situation effect on the different values obtained. The Savannas exhibit higher values (6.17 meq.100g⁻¹) than the fallows and fields, which display identical values (3.48 meq.100⁻¹).

The mean Ca²⁺ values obtained exhibited a range of 3.042 to 2.192 meq.100 g⁻¹. The statistical analyses revealed a highly significant situation effect on the Ca²⁺ contents. The mean calcium concentration in savannas is 3.042 meq.100g⁻¹, which is higher than that observed in fallows and fields, which have statistically identical calcium values (Table 5).

The mean magnesium content exhibited a range of 1.402 to 0.786 meq.100 g⁻¹. A significant situation effect on magnesium contents was observed. Indeed, the savanna situation exhibits the highest contents (1.402 meq.100g⁻¹) in comparison to the fallow and field situations, which demonstrate statistically equivalent contents (Table 5).

The mean potassium values ranged from 0.67 to 0.162 meq.100 g⁻¹ (Table V). The situation effect is highly significant, as fallows and fields exhibit a potassium deficiency compared to savannas.

The results of the analysis indicated a highly significant impact of the situation on the mean sodium values (Table 5). The Savannas exhibited the highest rates (0.032 meq.100g⁻¹) in comparison to the fallows (0.01 meq.100g⁻¹) and fields (0.022 meq.100g⁻¹).

The mean manganese values exhibited a range of 0.048 to 0.034 meq.100 g⁻¹. The statistical tests demonstrate a highly significant situation effect (Table 5). The data indicates that there is a manganese deficiency in savannas when compared to fields and fallows.

3.5.2 Base saturation rate

The saturation rate is defined as the ratio of the sum of exchangeable bases to the cation exchange capacity. The figure ranges from 98.56% to 76.95% (Table 5). The statistical analysis revealed a highly significant situation effect. The saturation rate serves as an indicator of the chemical richness of the soils and the cationic lining of the adsorbent complex. The saturation rate is notably elevated in agricultural fields (98.56%) and fallow land (91.44%), while it is considerably diminished in savannas (76.95%) (Table 5).

Table 5. Characteristics of the nutrient statuses at a depth of 0-20 cm in the soil of the studied situations. The means displaying the same letter per row are not significantly different (n=24, P<0.005), with standard error in parentheses.

Parameters	Plots		
	Savanna	Fallow lands	Cultivated fields
Ca ²⁺ (meq.100g ⁻¹)	3.042 ^a	2.192 ^a	2.4 ^a
	(0.53)	(0.61)	(0.56)
Mg ²⁺ (meq.100g ⁻¹)	1.402 ^a	0.786 ^b	0.8 ^b
	(0.3)	(0.26)	(0.25)
K ⁺ (meq.100g ⁻¹)	0.67 ^a	0.162 ^b	0.172 ^b
	(0.27)	(0.06)	(0.05)
Na ⁺ (meq.100g ⁻¹)	0.032 ^a	0.01 ^b	0.022 ^a
	(0.01)	(0.01)	(0.01)
Mn ²⁺ (meq.100g ⁻¹)	0.048 ^a	0.034 ^b	0.038 ^b
	(0.03)	(0.03)	(0.03)

Sum of exchangeable bases (SEB) (meq.100g ⁻¹)	4.74 ^a (1.27)	3.182 ^a (0.87)	3.43 ^a (0.87)
CEC (meq.100g ⁻¹)	6.17 ^a (0.13)	3.48 ^b (0.9)	3.48 ^b (0.9)
Bases saturation SEB/CEC (%)	76.95 ^a (18.21)	91.44 ^b (2.08)	98.56 ^b (2.08)

3.6 Nutrient status according to chemical balances

To diagnose mineral balances and assess the relative deficiency of exchangeable bases in soils, specific values are calculated (Fig. 2).

3.6.1 Calcium/Magnesium Balance

The Ca/Mg ratio values obtained in the various experimental conditions ranged from 2.2 to 3 (Fig. 2). The results of the statistical analyses indicated that there were no significant differences between the values obtained in the different situations.

3.6.2 Magnesium/Potassium Balance

The Mg/K ratios exhibited a range of 4.9 to 2.1. The results of the analyses indicated a statistically significant effect of the situations on the Mg/K ratio. The low ratios observed in savannas (2.1) are in stark contrast to those seen in fallows and fields, which exhibit significantly similar values (Fig. 2).

3.6.3 K/CEC (%) Balance

The potassium (K) saturation percentages in the various scenarios exhibited a range of 5 to 11%. The results of the statistical analyses indicated a statistically significant difference between the values observed in the different situations. The savannas, which exhibit a higher rate (11%), are in contrast to the fallows and fields, which demonstrate statistically identical rates (Fig. 2).

3.6.4 (Ca+Mg)/K Balance

The values of the (Ca+Mg)/K ratio from the various scenarios span a range of 6.63 to 18.6. The results of the statistical analyses demonstrated a highly significant situation effect. The low ratios observed in savannas (6.63) are in stark contrast to those seen in fallows and fields, which exhibit significantly similar ratios (Fig. 2).

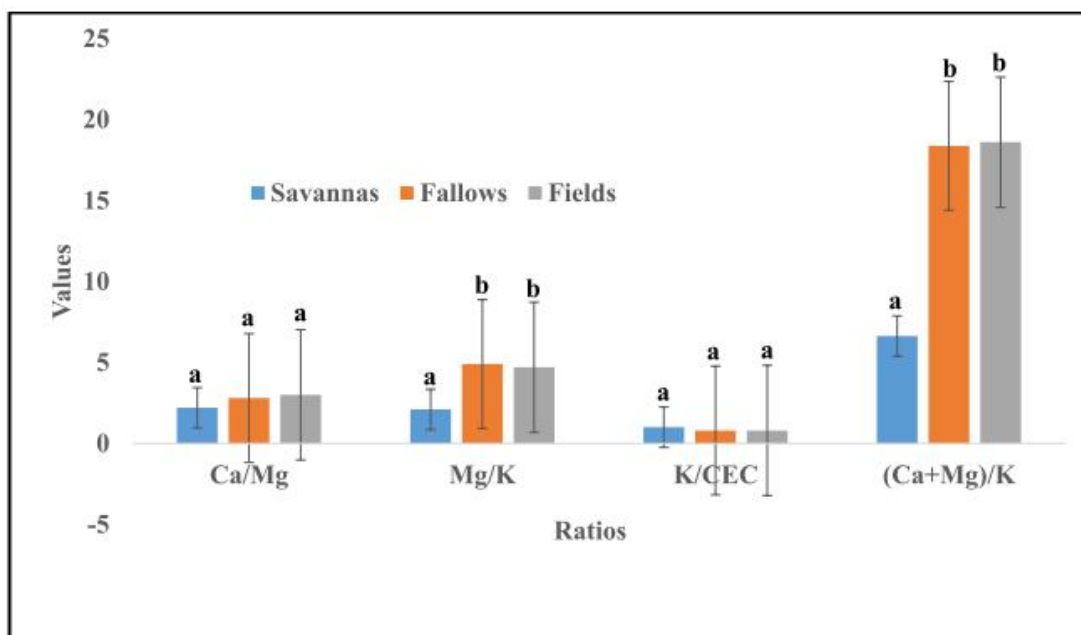


Fig. 2. Characteristics of the soil chemical balances of the plots studied. Means displaying the same letter are not significantly different ($n=12$, $P<0.005$).

4. DISCUSSION

4.1 Role of soil texture and type

The upper layers (0-20 cm) of soil in the various situations under consideration are characterized by a sandy texture. The sandy texture of the soil provides favourable conditions for drainage, air circulation and root penetration. However, this condition is not without its disadvantages. The soil exhibits a low capacity for water retention (Mulaji *et al.*, 2016; Bationo & Buerkert, 2001; Curtin & Smillie, 2000; Lal, 1997). The clay content is minimal in these superficial horizons, with a concentration of between 6 and 9%. The low clay content is a disadvantage for the soils under study (Baize, 2000). The author posits that clay is the most active granulometric fraction due to its multifunctional nature, which includes associations with organic matter, cohesion of aggregates, cation and anion fixation on exchange sites, and water retention. A paucity of clay results in a reduction in soil fertility. In the case of low clay contents (less than 20%), the addition of organic matter is necessary to compensate for the deficit in colloids. Notwithstanding, savannas exhibit a higher clay content than fallows and fields. This demonstrates that the practice of fallowing cultivated soils and subsequently returning them to savannah conditions has the effect of improving the clay texture of the soil. However, the capacity of clays to store cations and enhance the CEC is more dependent on their intrinsic characteristics than on their relative abundance in the soil. Several studies (Brady & Weil, 2017; Lal & Shukla, 2004; McBride, 1994) have demonstrated that it is smectite and montmorillonite, rather than kaolinite, that contribute the most to an increase in the cation exchange capacity (CEC) of a soil. The provenance of the sandy-clay substrate, which is sometimes gravelly, also has an impact on the improvement of CEC. Tropical ferruginous soils are frequently deficient in primary minerals, exhibiting a prevalence of secondary minerals such as iron oxides (e.g., hematite, goethite) and aluminum oxides (e.g., gibbsite). The cation exchange capacity of these minerals is comparatively low in comparison to clays such as smectites or illites. Our findings have been corroborated by several authors in similar studies (Sanchez, 2019; Brady & Weil, 2017; Lal, 2006; Dubroeuq & Volkoff, 1998). The texture and cation exchange capacity (CEC) of a given soil may be influenced by many factors, including the presence of vegetation.

4.2 Role of vegetation in improving CEC

The vegetation of western Burkina Faso is characterized by a high degree of diversity, encompassing a range of morpho-structural types that are mutually reinforcing in their exploitation of the environment. Following the initial clearing and temporary cultivation, the savanna state reestablishes itself through a series of intermediate states. The potential for cultivation is contingent upon the provision of sufficient time for the vegetation to recuperate before another disturbance occurs. Furthermore, savanna ecosystems are characterized by resilience, which is maintained through the presence of

disturbances. The physiognomy of the Sudanian savannas is therefore, representative of a succession of intermediate states, characterized by the presence of both young and old fallows. These fallows are the consequence of local agricultural practices that ensure their preservation throughout the crop cycle, as they serve the purpose of restoring soil fertility (Serpantié, 2003; Yoni, 2018). The biodiversity of this region is rich, though not particularly specific to savannas. The flora of spontaneous savanna formations in Bondoukuy has been found to comprise only 22% of Sudanese species, with a high proportion of species with a wide distribution or Sahelian, notably via ruderals of fallow land and weeds of crops. This would indicate a process of "degradation" and disturbance by loss of specificity (Devineauet *al.*, 1997). The authors highlight the floristic significance of savannahs in comparison to fallow land. The floristic richness of savannas provides a significant input of plant matter, which plays a crucial role in restoring soil fertility. The dynamic equilibrium achieved in savanna and fallow soils thus permits the restoration of soil fertility to a full or near-complete extent. This results in an improvement in the CEC and exchangeable bases of sandy soils. Boyer (1978) demonstrated that the concentration of specific cations (Ca^{2+} and Mg^{2+}) in the surface layer of the soil is influenced by vegetation. Indeed, the clearing and subsequent burning of a savannah allows for the injection of considerable quantities of calcium and magnesium into the soil, with respective increases of two and threefold. In contrast, the quantities in question are considerably lower in fallow land (Marschner, 2012; Boyer, 1978). The diverse flora of savannas, in comparison to that of fallow land, explains the relatively high levels of exchangeable bases that have been observed. It is, therefore, crucial to emphasize the contribution of savannahs to the restoration of soil fertility. In addition to the deposition of plant matter that nourishes the soil, various factors contribute to the enhancement of CEC, including the composition of the substrate, climate, pH, and other elements.

4.3 Influence of pH

The pH of the soil is a determining factor in the type of activity that exists or is predominant. The soil pH values obtained from the three situations are, on the whole, slightly acidic, with a pH range of 5.63 to 5.71. In the studies conducted by Bationo *et al.* (2006) and Baize (2000), the pH threshold for optimal activity was identified as 5.5. The pH values obtained in this study are higher than the threshold previously mentioned, indicating that the chemical and microbiological reactions occurring in the soil are occurring properly. In general, cultivated plants flourish in soil with a pH of 5.5 to 7, which is considered neutral or slightly acidic (Landon, 1991; Baize, 2000). Low pH values in soil impede plant growth by inhibiting nitrification. However, it is not possible to attribute the observed improvement in CEC to pH alone. The effect is indirectly related to the content and nature of clays. pH exerts a considerable influence on CEC enhancement by modulating the negative charges of soil constituents, notably organic matter and charge-dependent clays. As with texture and vegetation, pH exerts an influence on CEC. Nevertheless, what role organic matter plays in CEC improvement?

4.4 The impact of soil organic matter (SOM)

The incorporation of organic matter into soil can enhance soil fertility. It is an effective indicator of plant health. However, in the context of this study, the observed values are relatively low. The low organic matter content of these soils renders them susceptible to degradation by water erosion during periods of heavy rainfall (Mulaji *et al.*, 2016). Furthermore, the sandy texture intensifies the loss of soil nutrients and the reduction of CEC, which are already exacerbated by the low organic matter content. Conversely, an examination of the organic matter contents of savannahs in comparison to fallows and fields reveals that they remain stable during the fallow period, whereas the fields exhibit low organic matter content. It can be concluded that the fallow does not result in a significant improvement in organic matter content in comparison to the savanna. This is attributable to the reintroduction of plant debris to the soil, which is largely similar in savannas and fallows. At the field level, the low organic matter content can be attributed to the permanent presence of crops and, in some cases, the lack of restitution of crop residues. It is important to note, however, that in the context of sandy soil in Bondoukuy, the improvement of CEC is strongly correlated with organic matter. The findings of several studies are in alignment with our own (Sparks, 2003; Six *et al.*, 2002; Kätterer & Andrén, 1999; Batjes, 1996; Stevenson, 1994; Rowell, 1994). It can be concluded that organic matter plays an essential role in improving the CEC of sandy soils. It permits the retention and release of the cations essential for plant nutrition, enhances the structure and water retention of the soil, and fosters superior long-term fertility.

4.5 Dynamics of the CEC and exchangeable bases

CEC is defined as the capacity of a soil to retain and exchange cations, which are positive ions such as potassium (K^+), calcium (Ca^{2+}), magnesium (Mg^{2+}), and sodium (Na^+). Soils with a low CEC, such as sandy soils, exhibit reduced nutrient retention, resulting in the leaching of cations, particularly under conditions of heavy rainfall (Brady & Weil, 2017; McBride, 1994). Exchangeable bases represent the essential cations (K^+ , Ca^{2+} , Mg^{2+} , Na^+) that are available to plants. An enhancement in these bases directly enhances soil fertility (Kopittke *et al.*, 2007; Donahue *et al.*, 1990). The findings of

Fang *et al.* (2017) indicate that CEC is significantly influenced by climatic conditions, precipitation levels, topographical features and human activities. This phenomenon is exemplified in our sandy soils in the context of human activities. A comparison has been made between the CEC of the soil in savannas and fallows and that of fields under permanent cultivation, which are considered to be the controls. Furthermore, it is important to acknowledge the correlation between CEC and the clay-humic complex. The CEC of soil is therefore contingent upon the quantities of clay and organic matter that it contains, as well as the nature of these elements and the pH of the soil. The mean CEC value derived from the savanna soil is approximately twice that of the fallow and field soil. However, these values are markedly below the threshold of $15 \text{ meq.}100\text{g}^{-1}$, as outlined by Sawadogo (2006) for sandy soils. This can be attributed to the relatively low clay and organic matter contents observed in our samples (Baize, 2000). Indeed, as this author posits, organic matter in soils plays a significant role in both agronomical and environmental processes, including the adsorption and retention of water, exchangeable bases, phosphorus, nitrogen, and trace metal elements. Consequently, the low CEC values of our soils result in a diminished buffering capacity (Baize, 2000).

About exchangeable bases (Ca, Mg, K, Mn and Na), the savannas exhibit higher values than the fallows and fields in all the scenarios under investigation. In addition, the values obtained are below the threshold values determined for tropical soils ($5 \text{ meq.}100\text{g}^{-1}$) (Landon, 1991; Boyer, 1982). The saturation rate of the adsorbent complex by alkaline and alkaline-earth cations serves as a valuable agronomic and environmental indicator of the chemical richness of the soil. This, in turn, determines biological activity, structural quality and reserves of fertilizing elements. The mean saturation rate values indicate that savanna soils are more fertile than fallow and field soils. It can be concluded that fallow land has not resulted in a significant alteration to the saturation rate of bases. These soil conditions under fallow land may be attributed to the previous cultivation that preceded the fallow period. The findings of Fournier *et al.* (2000) on sandy soil indicate that fallow soil from animal-drawn cultivation exhibits a rapid regeneration process, in contrast to fallow soil from motorized cultivation. The soil conditions under fields are readily explicable, given that the cultivated plants export nutrients from the soil, despite regular fertilizer inputs in certain areas.

4.6 The influence of chemical balances

The equilibrium of chemical balances between diverse cations (Ca^{2+} , Mg^{2+} , K^{+}) and soil CEC is of paramount importance for the fertility of sandy soils and the nutrition of plants in general. The Ca/Mg ratio is frequently regarded as a crucial factor in maintaining optimal soil structure and balanced nutrient availability (Brady & Weil, 2017). However, the presence of excess calcium can reduce the availability of magnesium, while the accumulation of excess magnesium can compact the soil, thereby reducing aeration and water infiltration (Brady & Weil, 2017; Dorlodot *et al.*, 2005; Cox, 1979). The optimal Ca/Mg ratio for tropical sandy soils is between 3 and 5, as proposed by Landon (1991). The values of the ratios obtained in the three situations under consideration are less than or equal to 3, which suggests the possibility of Mg inhibition and Ca deficiency in the soils under investigation.

The Mg/K ratio plays an essential role in plant nutrition and cation balance within the soil. An excess of magnesium can result in competition with potassium for exchange sites on the soil matrix (Brady & Weil, 2017). This may result in a limitation of potassium uptake by plants. For these two antagonistic cations, the optimal Mg/K ratio is between 3 and 5 for sandy soils (Boyer, 1982). Except for savannas, which exhibit a Mg/K ratio of 2, the Mg/K ratio of fallows and fields is 4. This suggests that magnesium deficiency may occur in savannas. A low ratio may indicate an excess of potassium, which could result in a magnesium deficiency for some plants. This imbalance in nutrition and reduction in CEC may have adverse effects on plant growth and development. As demonstrated by Dogninet *al.* (1981), an optimal Mg/K ratio enables the maximization of cation exchange sites and the balanced absorption of nutrients by plants.

The K/CEC ratio represents the proportion of potassium in relation to the total cation exchange capacity of the soil. In soil with a fine particle content of 20%, the optimal K/CEC ratio is 3 to 5% (Brady & Weil, 2017). A ratio that is too high may indicate potassium saturation, which has the potential to impede the absorption of other cations. As posited by Fallavier and Olivin (1988), in sandy soils, potassium is preferentially exchanged to the detriment of other cations, provided that it does not saturate the CEC beyond 30%. In the present case, only savannas exhibit ratios of 11%, whereas fallows, representing an intermediate situation, and fields, serving as controls, display ratios of 5%. The low ratio observed in both cases indicates a limited availability of potassium in the soil, which could potentially impact plant nutrition. Conversely, the presence of excessive potassium in savannas has the potential to disrupt the absorption of magnesium and calcium.

The (Ca+Mg)/K ratio represents the overall relationship between calcium, magnesium and potassium and is employed to assess the overall cation balance in the soil. It ensures an optimal balance between these major cations, thereby enhancing soil fertility. It is generally recommended that the ratio of calcium and magnesium to potassium be between 10 and 15 in sandy soil (Brady & Weil, 2017). A ratio that is too low can result in soil structure issues and impede the absorption of calcium and magnesium. Conversely, a ratio that is too high can restrict the availability of potassium. The ratio of calcium to magnesium in the soils of our savannas is approximately 6, whereas in fallow land and fields, it is approximately 18. The availability of calcium and magnesium is therefore problematic in savannas, despite the renewal of the stock of plant matter. Conversely, in fields and fallow land, the supply of K is constrained. This is substantiated at the field level in areas of permanent cultivation, where organic amendments are restricted to crop residues for specific crops

(Dakouo, 2012). In fallow lands, which are transitional phases before savanna this is attributed to the replenishment of soil potassium through the decomposition of plant matter from species with low potassium content.

5. CONCLUSION

This study demonstrated the significance of savanna and fallow ecosystems in the restoration of soil fertility through a comparative analysis of the enhancement of cation exchange capacity (CEC) and exchangeable bases. The measurement of a range of chemical and physical soil parameters enabled a comparison of the characteristics of savanna soil with those of fallow land and cultivated fields. It is evident that fallow land, which represents the intermediate phase of fertility restoration, does not exert a significant influence on the enhancement of CEC and exchangeable bases. It is imperative to allow sufficient time for the savanna to become established before expecting significant increases in CEC and exchangeable bases. These increases are observed at the levels of all the physicochemical parameters measured in savannah soil, including texture, carbon (C), nitrogen (N), calcium (Ca^{2+}), magnesium (Mg^{2+}), manganese (Mn^{2+}), sodium (Na^+), and potassium (K^+). The enhancement of the CEC and exchangeable bases of sandy soil in the Sudanian savanna of western Burkina Faso thus necessitates an integrated soil management strategy, encompassing the following approaches.

- (i) The adaptation of cultural practices involves the contribution of organic matter, such as compost or manure and crop residues, as well as amendments of clay minerals, including kaolinite or bentonite. Additionally, the use of calcium amendments, such as dolomite, and the implementation of agroforestry are also key elements. Furthermore, the incorporation of leguminous as cover crops and the establishment of fallow systems are also essential aspects of this adaptation.

- (ii) The judicious management of water resources, specifically the use of mulch to reduce losses, is a crucial aspect of sustainable agriculture.

These approaches have the dual objective of enhancing the soil's capacity to retain nutrients and improving the availability of exchangeable bases, which are essential for plant growth. These approaches also facilitate the advancement of sustainable agriculture and enhance agricultural productivity in this region, where soil nutrients are naturally scarce.

DISCLAIMER (ARTIFICIAL INTELLIGENCE)

Author hereby declares that NO generative AI technologies such as Large Language Models (ChatGPT, COPILOT, etc.) and text-to-image generators have been used during writing or editing of this manuscript.

REFERENCES

- Baize, D. (2000). *Guide des analyses en pédologie*, 2nd Edition France, INRA Editions. p257.
- Bationo, A., Waswa, B., Kihara, J. and Kimetu, J. (2006). Advances in Integrated Soil Fertility Management in Sub-Saharan Africa: Challenges and Opportunities. *Nutrient Cycling in Agroecosystems*, 76, 2-3. <https://doi.org/10.1007/978-1-4020-5760-1>
- Bationo, A., Buerkert, A. (2001). Soil organic carbon management for sustainable land use in Sudano-Sahelian West Africa. In: Martius, C., Tiessen, H., Vlek, P.L.G. (eds) *Managing Organic Matter in Tropical Soils: Scope and Limitations. Developments in Plant and Soil Sciences*, vol 93. Springer, Dordrecht. 131-142 https://doi.org/10.1007/978-94-017-2172-1_13
- Batjes, N. H. (1996). Total carbon and nitrogen in the soils of the world. *European Journal of Soil Science*, 47(2), 151-163.
- Bowman, W. D., Cleveland, C. C., Halada, L., Hreško, J., & Baron, J. S. (2008). Negative impact of nitrogen deposition on soil buffering capacity. *Nature Geoscience*, 1(11), 767–770. <https://doi.org/10.1038/ngeo339>
- Boyer, J. (1982).

UNDER PEER REVIEW

- Boyer J., 1978. Calcium and magnesium in soils of humid and sub-humid tropical regions. Initiations-technical documentations No. 35. Orstom Paris edition. p176.
- Brady, N.C., & Weil, R.R. (2017). *The Nature and Properties of Soils*. 15th Edition, Pearson Education, New York, p912.
- Bunasol (2005). Restoration and maintenance of soil fertility in Burkina Faso. Technical document No. 10, p45.
- C.E.A.E. (2003). Determination of organic matter by dosage of organic carbon in agricultural soils: modified Walkley-Black method, MA. 1010 – WB 1.0. Ministère de l'Environnement du Québec, p10.
- Chen, D., Lan, Z., Bai, X., Grace, J. B., & Bai, Y. (2013). Evidence that acidification-induced declines in plant diversity and productivity are mediated by changes in below-ground communities and soil properties in a semi-arid steppe. *Journal of Ecology*, 101(5), 1322–1334. <https://doi.org/10.1111/1365-2745.12119>
- Cirad (2017). *Catalogue des analyses actuelles*. Cirad édition, p16.
- CSPS (1967). *Classification des sols*. Travaux C. P. C. S. 1963-1967, INA/Grignon.
- Cox, F. R. (1979). Calcium, Magnesium, and Potassium Ratios in Soil: Importance for Crop Production. *Soil Science Society of America Journal*, 43(4), 539-543.
- Curtin, D., & Smillie, G. W. (2000). Effects of texture and organic matter on cation exchange capacity in sandy soils. *Soil Science Society of America Journal*, 64(3), 1150-1154.
- Dakouo, D. (2012). Effects of soil types and topography on the absorption of K⁺ ions by cotton (*Gossypium hirsutum* L.) in the Sudano-Sahelian agroecosystems of western Burkina Faso. Doctoral thesis, F. H.-B. University of Cocody, p310.
- DeHayes, D. H., Schaberg, P. G., Hawley, G. J., & Strimbeck, G. R. (1999). Acid rain impacts on calcium nutrition and forest health. Alteration of membrane-associated calcium leads to membrane destabilization and foliar injury in red spruce. *Bioscience*, 49(10), 789–800. <https://doi.org/10.2307/1313570>
- Demchik, M. C., & Sharpe, W. E. (2000). The effect of soil nutrition, soil acidity and drought on northern red oak (*Quercus rubra* L.) growth and nutrition on Pennsylvania sites with high and low red oak mortality. *Forest Ecology and Management*, 136 (1-3), 199-207. [https://doi.org/10.1016/S0378-1127\(99\)00307-2](https://doi.org/10.1016/S0378-1127(99)00307-2)
- Devineau, J.L., Fournier, A. & Kaloga, B. (1997). Soils and vegetation of the Bondoukou region (Western Burkina Faso). General presentation and preliminary mapping by satellite remote sensing (SPOT), ORSTOM, Paris. p118.
- Devineau, J.-L. & Guillaumet, J.-L. (1992). Origin, nature and conservation of African natural environments: the botanists' point of view. *Afrique Contemporaine*, 161, 79-90.
- Dognin, O., Megie, C., Richard, L. & Sement, G. (1981). Dynamics of exchangeable potassium in cultivated tropical soils. *Cot. Fib. Trop.* 1931, 36 (2), 191-204.
- Donahue, R. L., Miller, R. W., & Shickluna, T. C. (1990). *An Introduction to Soils and Plant Growth*. Prentice-Hall of India, New Delhi, p1431.
- Dorlodot, S., Lutts, S., & Bertin, P. (2005). Effects of Cation Exchange Capacity on Plant Nutrient Uptake. *Plant and Soil*, 273, 297-310.
- Dubroeuq, D., & Volkoff, B. (1998). From oxisols to podzols: mineralogical and chemical evolution of ferrallitic weathering mantles in humid tropical environments. *Clay Minerals*, 33(1), 45-64.
- Fallavier, P. & Olivin, J. (1988). Experimental study of potassium and magnesium dynamics in some tropical soils representative of oil palm growing areas. *Oilseeds* 43 (3), 93-105

Fang, K., Kou, D., Wang, G., Chen, L., Ding, J., Li, F., Yang, Y. (2017). Decreased soil cation exchange capacity across northern China's grasslands over the last three decades. *Journal of Geophysical Research, Biogeosciences*, 122, 3088–3097. <https://doi.org/10.1002/2017JG003968>

FAO-WRB (2015) World Reference Base for Soil Resources. International soil classification system for naming soils and developing soil map legends. World Soil Resources Report No. 106, Rome, p108.

Fournier, A., Floret, C., Gnahoua, G. M. (2001). Vegetation of fallow lands and post-crop succession in tropical Africa. In Floret, C. & Pontanier R. *Fallow land in tropical Africa, volume 2. From natural to improved fallow. The latest knowledge.* John Libbey Eurotext, Paris, 21-83.

Fournier, A., Yoni, M., & Zombré, P. (2000). Fallow land with *Andropogon gayanus* in Sudanese Savannas (West Burkina Faso): Flora, Structure, Determinants and Functions within the Ecosystem. *Studies on the flora and vegetation of Burkina Faso and neighboring countries*, Frankfurt-Ouagadougou, Verlag Natur & Wissenschaft, Solingen, 5, 3-32.

Fournier, A. (1991). Phenology, growth and plant production in some West African savannas. Variation along a climatic gradient. State doctoral thesis, Université Pierre et Marie Curie Paris VI. Orstom Edition, p307.

Högberg, P., Fan, H. B., Quist, M., Binkley, D., & Tamm, C. O. (2006). Tree growth and soil acidification in response to 30 years of experimental nitrogen loading on boreal forest. *Global Change Biology*, 12(3), 489-499. <https://doi.org/10.1111/j.1365-2486.2005.01102>

Kätterer, T. & Andrén, O. (1999). Long-term agricultural field experiments in Northern Europe: Analysis of the influence of management on soil carbon stocks using the ICBM model. *Agriculture, Ecosystems & Environment* 72(2), 165-179.

Kirk, G. J. D., Bellamy, P. H., & Lark, R. M. (2010). Changes in soil pH across England and Wales in response to decreased acid deposition. *Global Change Biology*, 16(11), 3111-3119. <https://doi.org/10.1111/j.1365-2486.2009.02135.x>

Kopittke, P. M., Dart, P. J. & Menzies, N. W. (2007). Toxic Effects of Low Concentrations of Cu on Nodulation of Cowpea (*Vigna unguiculata*). *Environmental Pollution*, 145, 309-315. <https://doi.org/10.1016/j.envpol.2006.03.007>

Kouadio, E. N., Koffi, E. K., Kouakou, B. J., Messoum, G. F., Kouamé, B. & N'guessan, D. B. (2018). Diagnosis of the fertility status of soils under cotton cultivation in the main production basins of Côte d'Ivoire. *European Scientific Journal*, 14 (33), 221-238. Doi: 10.19044/esj.2018.v14n33p221.

Lal, R. (2006). Enhancing Crop Yields in the Developing Countries through Restoration of the Soil Organic Carbon Pool in Agricultural Lands. *Land Degradation & Development*, 17, 197-209. <https://doi.org/10.1002/ldr.696>

Lal, R. & Shukla, M. K. (2004). *Principles of Soil Physics*. Academic Press, New York. p736. <https://doi.org/10.4324/9780203021231>

Lal, R. (1997). Long-Term Tillage and Maize Monoculture Effects on a Tropical Alfisol in Western Nigeria. I. Crop Yield and Soil Physical Properties. *Soil and Tillage Research*, 42, 145-160.

Landon, J.R. (1991) *Booker Tropical Soil Manual. A Handbook for Soil Survey and Agricultural Land Evaluation in the Tropics and sub-Tropics.* Longman Scientific & Technical Publ., Harlow, United Kingdom, p 474.

Lieb, A. M., Darrouzet-Nardi, A., & Bowman, W. D. (2011). Nitrogen deposition decreases acid buffering capacity of alpine soils in the southern Rocky Mountains. *Geoderma*, 164 (3-4), 220-224. <https://doi.org/10.1016/j.geoderma.2011.06.013>

Likens, G. E., Driscoll, C. T., Buso, D. C., Siccama, T. G., Johnson, C. E., Lovett, G. M. & Bailey, S. W. (1998). The biogeochemistry of calcium at Hubbard Brook. *Biogeochemistry*, 41(2), 89-173. <https://doi.org/10.1023/a:1005984620681>

Lucas, R.W., Klaminder, J., Fütter, M.N., Bishop, K.H., Egnell, G., Laudon, H., & Högberg, P. (2011). A meta-analysis of the effects of nitrogen additions on base cations: Implications for plants, soils, and streams. *Forest Ecology and Management*, 262(2), 95-104. <https://doi.org/10.1016/j.foreco.2011.03.018>

- Lu, X., Mao, Q., Mo, J., Gilliam, F.S., Zhou, G., Luo, Y. & Huang, J. (2015). Divergent responses of soil buffering capacity to long-term N deposition in three typical tropical forests with different land-use history. *Environmental Science & Technology*, 49(7), 4072-4080. <https://doi.org/10.1021/es5047233>
- Luo, W. T., Nelson, P. N., Li, M.-H., Cai, J. P., Zhang, Y. Y., Zhang, Y. G. & Jiang, Y. (2015). Contrasting pH buffering patterns in neutral-alkaline soils along a 3600 km transect in northern China. *Biogeosciences*, 12 (23), 7047-7056. <https://doi.org/10.5194/bg-12-7047-2015>
- Marschner, H. (2012). *Marschner's Mineral Nutrition of Higher Plants*. Flight. 89. Academic Press, London, p651. <https://www.elsevier.com/books/marschners-mineral-nutrition-of-higher-plants/marschner/978-0-12-384905-2>
- McBride, M. B. (1994). *Environmental Chemistry of Soils*. Oxford University Press, Oxford, 406 p.
- McLaughlin, S.B., & Wimmer, R. (1999). Tansley review #104. Calcium physiology and terrestrial ecosystem processes. *The New Phytologist*, 142 (3), 373-417. <https://doi.org/10.1046/j.1469-8137.1999.00420.x>.
- Miller, R. W., & Donahue, R. L. (1990). *Soils: An Introduction to Soils and Plant Growth*. 6th Edition. Prentice-Hall, Upper Saddle River. 1431 p.
- Mulaji, C., Disa-Disa, P., Kibal, I. & Culot, M. (2016). Diagnostic of the agropedological state of acid soils in the Kinshasa province in the Democratic Republic of Congo (DRC), *Comptes rendus Chimie*, <http://dx.doi.org/10.1016/j.cri.2015.08.010>.
- Mueller, K. E., Eissenstat, D. M., Hobbie, S. E., Oleksyn, J., Jagodzinski, A. M., Reich, P. B. & Chorover, J. (2012). Tree species effects on coupled cycles of carbon, nitrogen, and acidity in mineral soils at a common garden experiment. *Biogeochemistry*, 111(1-3), 601-614. <https://doi.org/10.1007/s10533-011-9695-7>.
- Rowell, D.L. (1994). *Soil Science: Methods and Applications*. Longman Group UK Limited London p350. Sanchez, P. A. (2019). *Properties and Management of Soils in the Tropics*. 2nd Edition Cambridge University Press, Cambridge, p666.
- SAS (2020). *SAS/STAT User's Guide, Version 9.0, Fourth Edition*. Cary, NC, SAS Institute, p378.
- Sawadogo, H. (2006). *Organic and Phosphate Fertilization in the Zai Cropping System in the Sudano-Sahelian Environment of Burkina Faso*. Doctoral Thesis, Faculty of Agricultural Sciences of Gembloux, Belgium, p219.
- Scheffe, H. (1959). *The Analysis of Variance*. Wiley, New York, p 477.
- Scherrer, B. (1989). *Biostatistics*. Edition Gaëtan Morin, p850.
- Serpantié, G. (2003). Persistence of temporary cultivation in the cotton savannas of West Africa. Case study in Burkina Faso. Thesis of Doctorate of Agronomy, National Institute of Agronomy, Paris-Grignon, p342.
- Six, J., Conant, R. T., Paul, E. A., & Paustian, K. (2002). Stabilization mechanisms of soil organic matter: Implications for C-saturation of soils. *Plant and Soil* 241 (2), 155-176.
- Solbrig, O. T. & Young, M. D., (1993). Economic and ecological driving forces affecting tropical savannas. In *The World's savannas*. Man & Biosphere Series, Vol XII. UNESCO & Parthenon Publishing Group, Paris, 3-18.
- Sparks, D. L. (2003). *Environmental Soil Chemistry*. 2nd Edition, Academic Press, Oxford. p352. <https://doi.org/10.1016/B978-012656446-4/50001-3>
- Watmough, S. A., & Dillon, P. J. (2003). Base cation and nitrogen budgets for a mixed hardwood catchment in South-Central Ontario. *Ecosystems*, 6(7), 675-693. <https://doi.org/10.1007/s10021-002-0164-y>.

Xu, R., Zhao, A., Yuan, J., & Jiang, J. (2012). pH buffering capacity of acid soils from tropical and subtropical regions of China as influenced by incorporation of crop straw biochars. *Journal of Soils and Sediments*, 12(4), 494-502. <https://doi.org/10.1007/s11368-012-0483-3>.

Yoni, M., Sako, A., Abbadie, L., & Serpantie G. (2018). Carbon and Nitrogen Dynamics of Soil Organic Matter Fractions in Thickets and Intergrowth Areas of Sudanian Savannah Grasslands, Bondoukuy, Western Burkina Faso. *Environment and Natural Resources Research*, 8(4), 16-31. <https://doi.org/10.5539/enrr.v8n4p16>.

UNDER PEER REVIEW