

# Cultivation trial of *Pleurotuseous* and *Pleurotustreatus* mushrooms on rice straw (*Oryza sativa* L.) in Daloa, Côte d'Ivoire

## ABSTRACT

In Côte d'Ivoire, rice growing plays an important nutritional and economic role. However, rice fields also produce huge quantities of waste (rice straw) which is often not used or used very little and in some cases burnt; yet the valorisation of this agricultural waste can increase profitability. It is in this context that this study used *P. eous* and *P. ostreatus*, two edible mushroom, to bio-delignify rice straw and produce edible carpophores. To this end, the stems and leaves of oriza sp were sun-dried for a fortnight and cut into pieces (2-3cm). Agricultural lime and rice bran were added in varying proportions (1% = agricultural lime; 0-15% = rice bran) to obtain several formulations. The substrates were moistened and packaged in heat-resistant bags. The various substrates were then sterilised and inoculated with spawn from *P. eous* and *P. ostreatus* semis. The results showed that the mycelial filament of *P. eous* was observed three (3) days after inoculation. On the other hand, there were three dates (3rd, 9th and 21st day) of appearance of the mycelial front in *P. ostreatus*. The incubation period for *P. ostreatus* ranged from 51 to 57 days, while that for *P. eous* was 52 days. The addition of rice bran in increasing doses reduced the colonisation rate of both species of fungus. The lowest values of biological efficiency were obtained by growing *P. eous*. They ranged from 0% (F4) to 6% (F3). In the case of *P. eous*, the addition of rice bran in increasing doses increased the carpophore yield. But beyond 10%, the yield became zero. In the case of *P. ostreatus*, the yield became low when rice bran was added in increasing doses. This study confirms that rice field waste (rice straw) can be a raw material for the production of edible mushrooms. These results should be disseminated to the general public in order to increase the profitability of rice growers.

Keywords: *Pleurotus eous*, *P. ostreatus*, rice straw, substrate, carpophores, edible mushroom, biological efficiency

## 1. Introduction

In sub-Saharan Africa, people's food needs are far from being met despite efforts in the livestock and agriculture sectors [1]. To meet these demands, agriculture and food systems will have to adapt to the negative effects of climate change and become more resilient, productive, and sustainable. This is the only way to guarantee the well-being of ecosystems and rural populations while reducing greenhouse gas emissions [2].

Every year, people get rid of all kinds of agricultural waste. Rubbish accumulates over weeks and months, decomposing on the spot and becoming a source of disease [3]. In Côte d'Ivoire, for example, several crops produce bio-waste, particularly rice. Côte d'Ivoire is the second-largest producer of paddy rice in the UEMOA (West African Economic and Monetary Union), with more than 700,000 tonnes, and the third-largest producer in the ECOWAS (Economic Community of West African States) region [4]. This production is accompanied by agricultural waste. Some straw is left in the rice field after harvesting; some is left to decompose, while others are burned. This produces smoke, which contributes to the greenhouse effect. Very little of this straw is used to make traditional mattresses. The capacity to use these residues is limited [5, 20, 21].

It is therefore essential to introduce effective methods for recovering these residues and transforming them into other useful products [6]. The development of new crops such as edible mushrooms can improve the quality of people's diets and reduce unemployment and poverty [7]. In soilless cultivation, the fungus extracts nutrients from the substrate (grasses, wood, and agricultural waste) through its mycelium to obtain the substances it needs for its development [8] & [9]. Mushroom cultivation is linked to the transformation of agricultural and agro-industrial waste into food of high nutritional value. This metabolic capacity of mushrooms is achieved through microbiological processes which, to achieve their greatest economic variability, must be controlled by optimal physical, chemical, environmental, and technical processes/conditions [10]. Yet, this cultivation is little practiced, and this aspect of Mycology remains under-explored in Côte d'Ivoire and more specifically in Africa [11].

Moreover, the genus *Pleurotus* is an edible mushroom with high nutritional value, easy growth on substrate, and good development in rustic conditions [12]. It is easily grown on a wide variety of agricultural residues, such as straw, grass, sawdust, coconut husk, maize seed, sugarcane bagasse, and others of an organic nature. This excellent development is due to the production of certain lignocellulosic enzymes that allow easy degradation of lignin and cellulose from wood, as well as other plant substrates used for this particular crop [12].

The aim of this work is to improve the productivity of the fungi *P. eous* and *P. ostreatus*, through different formulations of rice straw.

## 2. MATERIALS AND METHODS

### 2.1 Study sites

The department of Daloa lies between latitude  $6^{\circ}53'58''$  North and longitude  $6^{\circ}26'32''$  West. The department covers an area of 15,205 km<sup>2</sup> and has an estimated population of 705,378. The site is located at the Jean Lorougnon Guédé University and is subject to the same climatic characteristics as the study area.

The University is located to the north-east of the town of Daloa. It lies between latitude north ( $6^{\circ}54'$ ) and longitude west ( $6^{\circ}26'$ ), covering an area of around 415 hectares. It is influenced by a humid tropical climate, with rainfall ranging from 1,200 to 1,600 millimeters per year [13]. Temperatures range from 25°C to 28°C, with an average of  $26.62 \pm 1.02^{\circ}\text{C}$ . Relative humidity varies from 73 to 84%, with an average of  $79.83 \pm 4.12\%$  [14] (Figure 1).

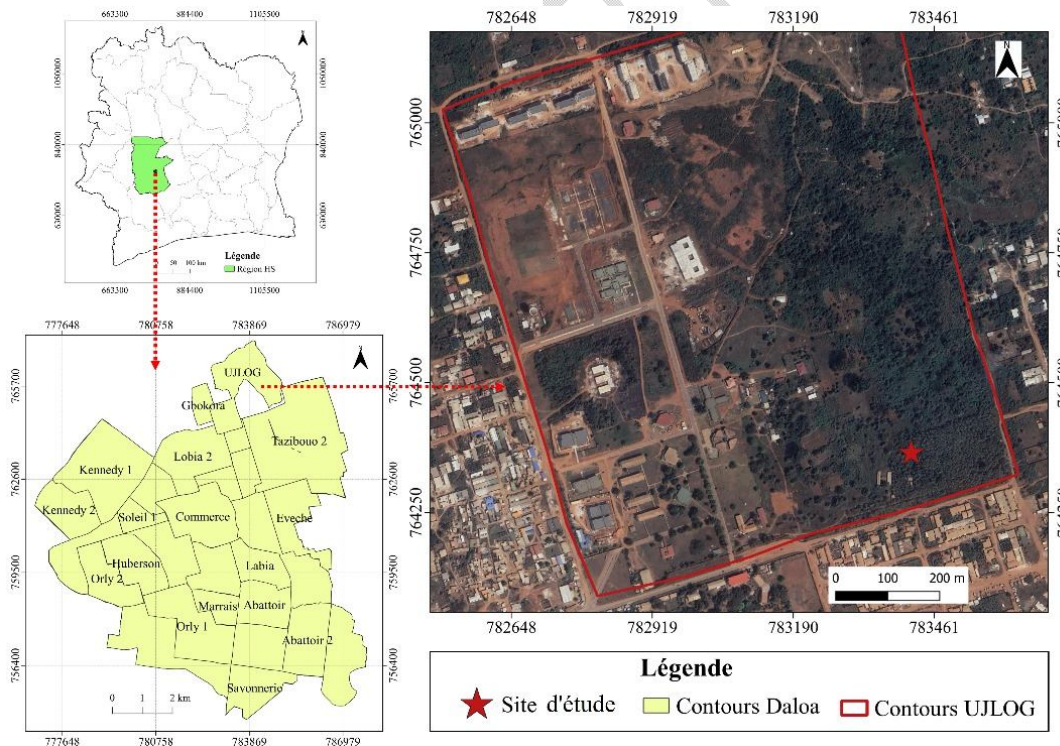


Fig. 1. Map of the study site [14]

## 2.2 Materials

### 2.2.1 Biological materials

Rice straw, rice bran and sawdust (organic plant matter) were used as substrates for fruiting carpophores. The spawns of *P. ostreatus* and *P. eous* were supplied by the Jean Lorougnon Guédé University in Daloa.

## **2.3 Methods**

### **2.3.1 Preparation of the rice straw substrate**

The stems and leaves of *Oryza sativa* were collected from a rice field on the study site after the harvest period, dried in the sun for two weeks, and cut into 2-3 cm pieces. Agricultural lime and rice bran were added in varying proportions (1% agricultural lime; 0-15% rice bran) to obtain several formulations of culture medium for different mushrooms. The substrates were moistened, immersed in a barrel, and boiled for 1 hour and 30 minutes. The substrates were drained using a metal drainer for 6 hours and packed into heat-resistant bags (30 cm x 17 cm) at a rate of one kilogram of substrate per bag. The moisture content and pH of the substrate were determined using a THREE-WAY METER.

### **2.3.2 Preparation of the sawdust substrate**

In our trials, the sawdust substrate is the reference or control substrate (F0). The sawdust was collected from a local sawmill. It is the main substrate used by all oyster mushroom producers in Côte d'Ivoire. It is used in the following proportions (97% sawdust, 1% agricultural lime, and 2% rice bran). The mixture is moistened to a level of 85-90%, placed in a pile, and covered with black plastic. Every three days, using a shovel, the mixture is turned over to speed up the decomposition process and ensure that the substrate is completely cooled. The moisture content and pH of the substrate were determined at the end of the composting process. The substrate was packed into heat-resistant bags at a rate of one kilogram per bag (30 cm x 17 cm) using a digital scale (Scout™ pro; model: Scout™ pro spu602) and then sterilized in a steam barrel for 2 hours. After cooling the sachets for 24 hours, they were transferred to a room for inoculation.

Table 1. Composition of fruiting substrates

---

| Formulations |
|--------------|
|--------------|

---

| Compositions      | F0          | F1          | F2         | F3           | F4         |
|-------------------|-------------|-------------|------------|--------------|------------|
| Sawdust           | 97%         | %           | 0%         | 0%           | 0%         |
| Rice straw        | 0%          | 99%         | 94%        | 89%          | 84%        |
| Rice bran         | 2%          | 0%          | 5%         | 10%          | 15%        |
| Agricultural lime | 1%          | 1%          | 1%         | 1%           | 1%         |
| Moisture content  | 50 %<br>60% | 50 %<br>60% | 50%<br>60% | 50 %<br>60 % | 50%<br>60% |
| pH                | 7-8         | 7-8         | 7-8        | 7-8          | 7-8        |

### 2.3.4. Inoculation of the various substrates

Inoculation of the substrates consisted of sprinkling two tablespoons of spawn of *P. eous* and *P. ostreatus* onto the substrates. The bags were then sealed with a ring of PVC tubing and covered with plastic film, then held in place with a plastic strap.

### 2.3.5 Incubation

Incubation is the stage during which the mycelium invades the substrates. This stage takes place in a dark room. The bags are placed vertically on shelves designed for this purpose. During the colonisation process, a number of parameters were measured and others estimated, including:

-

Colonisation height : The colonisation height is the distance covered by the mycelium front on the substrate. This height was measured using a graduated ruler from the point of inoculation to the front of the mycelium. This value was used to determine the colonisation rate of the mycelium on the substrates. The following formulae were used to calculate these parameters.

#### - Mycelium invasion time or incubation time

This measurement is determined after the mycelium has colonised the entire bag,

- The colonisation rate

The colonisation rate (CT) was determined by the following formula

$$TC = d \times 100 / LS$$

TC = colonisation rate, d = colonisation height and LS = bag length

### 2.3.6 Fructification

Once the substrates had been fully colonised, they were transferred to the fruiting room. In this room, the bags were placed horizontally on top of each other on shelves and opened with a knife. The room was watered twice or three times a day to increase the relative humidity and encourage the appearance of primordia. A number of fruiting parameters were measured, including :

- Cap diameter

The diameters of the caps of the *Pleurotus oeus* and *Pleurotus ostreatus* mushrooms in the different formulations were measured using a graduated ruler.

- Biological efficiency (%)

Biological efficiency, also known as yield, was calculated by multiplying by 100 the ratio of the fresh weight of the carpophore or total harvest to the dry weight of the substrate.

$$\text{Biological efficiency (\%)} = (\text{fresh weight of the carpophores} / \text{dry weight of substrate}) * 100$$

- Survival rate of primordia (TSP)

The primordia and mature carpophores were counted and the survival rate of the primordia was assessed using the following formula:

$$\text{TSP (\%)} = (\text{number of mature mushrooms} / \text{number of primordia}) * 100$$

### 2.3.7 Data processing

Curves and histograms were plotted using Excel. R software version 4.3.2 (2021-11-01) was used to perform the two-factor ANOVA test at the 5% threshold.

### **3. RESULTS AND DISCUSSION**

#### **3.1 RESULTS**

##### **3.1.1 Assessment of the growth height of *P. ostreatus* and *P. eous***

##### **3.1.2 Growth height of *P. ostreatus* on rice straw substrate**

Mycelial growth of *P. ostreatus* occurred in several ways. On culture media F1, F2, and F4, exponential growth was observed from the beginning to the end of incubation. However, there was a variation in the date of appearance of the colonization height. On substrate F2, it was observed on day 9. On the other hand, it appeared earlier on the F1 substrate (the height of colonization was observed just after the 3rd day of incubation). On the other hand, the mycelium front appeared late on culture medium F4 (after the 21st day of incubation). In addition, an exponential growth phase followed by a stable growth phase was observed on substrate F3. The exponential growth phase (between the 6th and 36th) is longer than the stable growth phase (between the 39th and 51st). All these colonization heights are smaller than those obtained on the F0 substrate (sawdust, F0 = 21 cm) (Figure 2a).

##### **3.1.3 Growth height of *P. eous* on rice straw substrate**

On culture media F1, F2, F3, and F4, the mycelium fronts of *P. eous* evolved in the same way. An exponential growth of the mycelium had been observed during incubation. For all these substrates, the height of colonization appeared from the third day of incubation. However, on culture medium F4, mycelial growth occurred in two phases. These phases are the exponential growth phase and the stable growth phase. The exponential growth phase occurs between day 3 and day 30 of incubation. Finally, the stable growth phase begins after the 30th day and ends on the 52nd day. Furthermore, the height of colonization obtained by growing *P. eous* on an F0 substrate (sawdust) was the greatest (h = 19 cm) (Figure 2b).

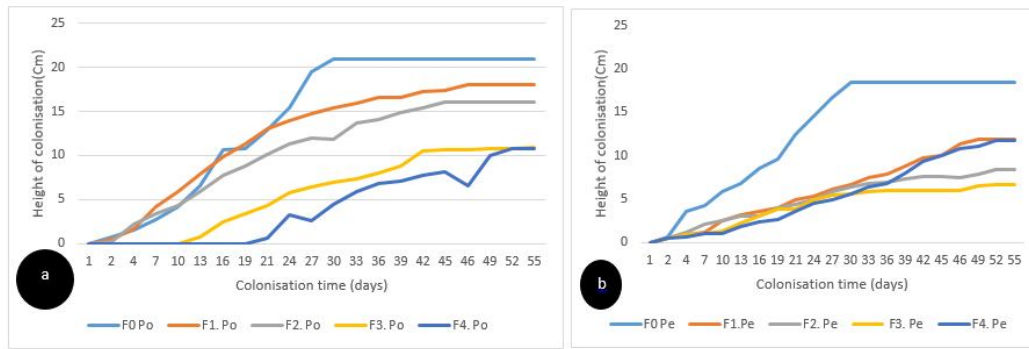


Fig. 2. Colonisation heights of *P. ostreatus* (a) and *P. eous* (b) on different straw formulations

(F1= 99% rice straw + 1% agricultural lime + 0% rice bran, F2 = 94% rice straw + 1% agricultural lime + 5% rice bran, F3= 89% rice straw + 1% agricultural lime + 10% rice bran and F4= 84% rice straw + 1% agricultural lime + 15% rice bran).

### 3.1.4 Rate of colonisation

The rate of colonization varies according to the substrate and the species of fungus. The highest colonization rates are obtained by *P. ostreatus*. These rates vary from 50% to 100%. On the other hand, the lowest colonization rates were observed with the species *P. eous*. These colonization rates for *P. eous* ranged from 90% to 30%. Generally speaking, for these two species of fungus, the colonization rate drops when the quantity of rice bran is increased. Thus, adding rice bran in increasing doses to a rice straw substrate reduces the colonization rate of *P. ostreatus* and *P. eous*. But 5% rice bran is the dose needed to increase the rate of colonization of *P. eous* on the rice straw substrate. Beyond this quantity, the addition of rice bran reduces the colonization rate of *P. eous*. However, rice bran is not recommended when growing *P. ostreatus* on a straw substrate (Figure 4). *P. ostreatus* colonizes the sawdust substrate better than *P. eous*. The best colonization rates in this study were obtained when growing *P. ostreatus* and *P. eous* on sawdust substrate. Figures 3 and 4 illustrate this

information.

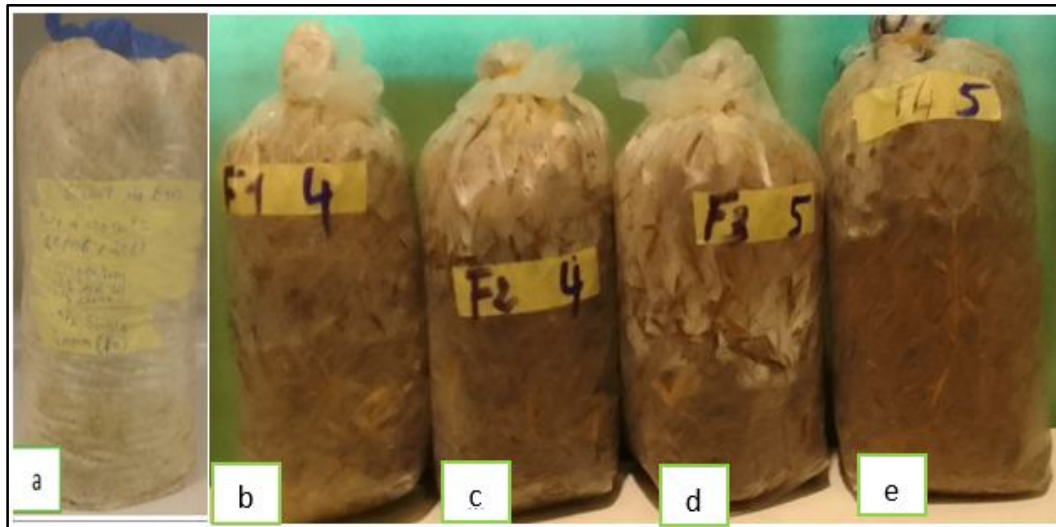


Fig.3.Colonisationof differentsubstrates

(a :F0= 99% Sawdust+1% Agricultural Lime+ 2% Rice Bran ; b : F1= 99% Rice Straw +1% Agricultural Lime+ 0% Rice Bran ; c : F2 = 94% Rice Straw + 1% Agricultural Lime + 5% Rice Bran ; d : F3= 89% Rice Straw + 1% Agricultural Lime + 10% Rice Bran and e : F4= 84% Rice Straw + 1% Agricultural Lime + 15% Rice Bran).

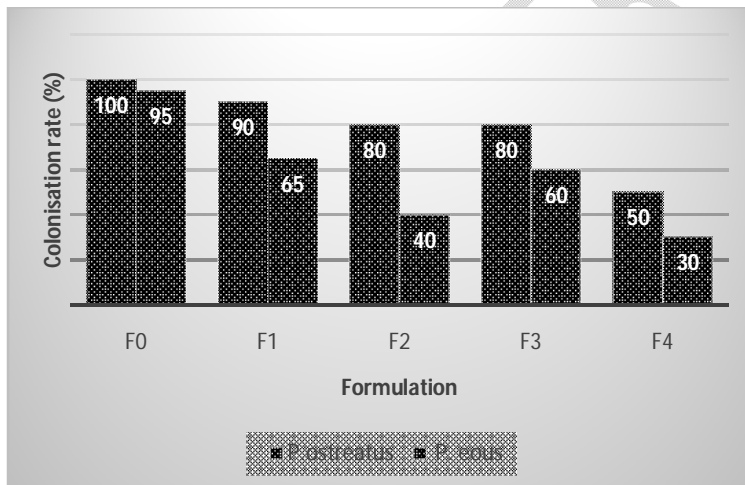


Fig. 4. Colonisation rates of *P. eous* and *P. ostreatus* onricestraw formulations

(Tc : Colonisation rate of *P.ostreatus*, Tc : *P.eous* colonisation rate, " F0= 99% Sawdust+1% Agricultural Lime+ 2% Rice Bran F1= 99% Rice Straw +1% Agricultural Lime+ 0% Rice Bran, F2 = 94% Rice Straw + 1% Agricultural Lime + 5% Rice Bran F3= 89% Rice Straw + 1% Agricultural Lime + 10% Rice Bran and F4= 84% Rice Straw + 1% Agricultural Lime+ 15% Rice Bran).

### 3.1.5 Combinedeffect of formulation and mushroomvariety on fruitingparameters

The two-factor ANOVA test performed at the 5% thresholdgives the following information:

Apart from the number of carpophore harvested (Ncr), substrate formulation and mushroom variety have a significant effect on all other fruiting parameters. However, the combination of these two factors (Formulation Vs Variety) had no significant effect on the number of primordia (Pri) and runs (Avo). On the other hand, this combination does have a significant influence on the other fruiting parameters (number of carpophore harvested, stipe length, carpophore diameter, follow-up rate of).

Table 2. Combined effect of formulation and mushroom variety on fruiting parameters

| Fruiting parameters          |           |          |          |           |           |           |             |
|------------------------------|-----------|----------|----------|-----------|-----------|-----------|-------------|
|                              | pri       | avo      | Ncr      | ls        | dm        | TVS       | pf          |
| formulation                  | 0,001 *** | 0,001*** | 0,177    | 0,001 *** | 0,001***  | 0,007 **  | 0,001***    |
| variety                      | 0,023 *   | 0,014 *  | 0,293    | 0,001 *** | 0,001 *** | 0,516     | 0,001*** Pr |
| Formulation<br>Vs<br>variety | 0,463     | 0,755    | 0,003 ** | 0,001**   | 0,001 *** | 0,001 *** | 0,7407      |
| residual                     | 82092,26  | 46891,26 | 14871,72 | 1138,82   | 1152,14   | 184829,26 | 167245,26   |

Meaning codes: 0 \*\*\*\* 0.001 \*\*\* 0.01 \*\* 0.05 \* 0.1 . 1

avo: runt, Ncr: number of carpophore harvested, Pf: freshweight, dm: averagediameter, ls: stipe length, TVS: primordial follow-up rate and Pr: probability of occurrence.

### 3.1.6 Biological efficiency

The two mushroom species (*P. ostreatus* and *P. eous*) fruited on the different substrates (Figure 6). Biological efficiency (BE) varied depending on the mushroom species and the fruiting substrates.

*P. eous* produced more fruiting bodies (carpophores) than *P. ostreatus* on the sawdust substrate (F0). However, the lowest biological efficiency values were obtained by growing *P. eous* on substrates containing rice straw. These ranged from 0% for the substrate with the highest rice bran content (F4) to 5% for the one with 5% rice bran (F3). For *P. eous*, adding rice bran initially increased biological efficiency, but adding more than 10% resulted in zero efficiency.

In contrast, the absence of rice bran in the rice straw substrate (F1) resulted in the highest BE for *P. eous* (30%). However, adding rice bran in increasing doses significantly reduced BE, dropping to 4% for a substrate with 15% rice bran (F4) (Figure 7).

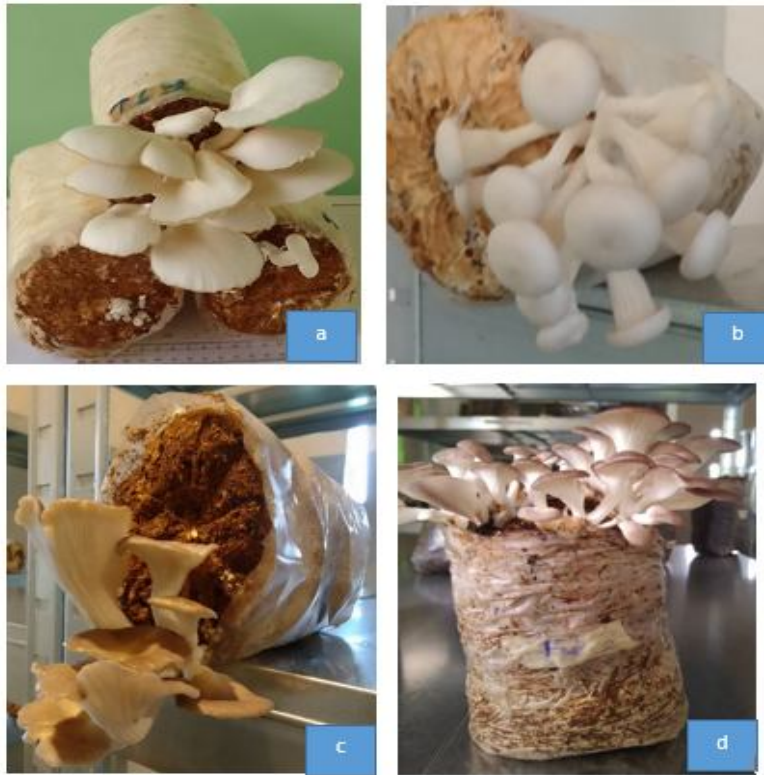


Fig. 5. Fructification of *P. eous* and *P. ostreatus* on different substrates

(a= photo of *P. ostreatus* on sawdust b= photo of *P. ostreatus* on rice straw C= photo of *P. eous* on sawdust d= photo of *P. eous* on rice straw)

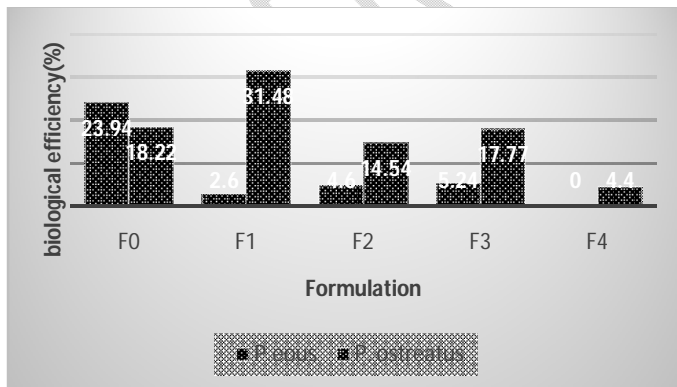


Fig. 6. Biological efficiency values for *P. eous* and *P. ostreatus* grown on different substrates

(F0= 99% sawdust + 1% agricultural lime + 2% rice bran, F1= 99% rice straw + 1% agricultural lime + 0% rice bran, F2 = 94% rice straw + 1% agricultural lime + 5% rice bran, F3= 89% rice straw + 1% agricultural lime + 10% rice bran and F4= 84% rice straw + 1% agricultural lime + 15% rice bran).

### 3.1.7 Correlation between different fructification parameters of *P. ostreatus*

Pearson's correlation coefficient (r) was used to assess the degree of association between the different variables studied. Some strong correlations were observed between the measured variables. However, most of the correlation coefficients were low. Only the pairs pri-avo (0.80), ls-dm (0.96), pf-dm (0.80), TVS-dm (0.78), pf-ls (0.85), and TVS-ls (0.82) showed a strong positive value, indicating a correlation between these variables. The strongest correlation was observed between the ls-dm pair (0.96).

This suggests that a higher number of primordia is associated with a higher number of runs. Additionally, longer stipes of the carpophores were correlated with wider caps, larger masses, and a higher follow-up rate of primordia.

Table 3. Matrix of correlations between the eight variables measured in *P. ostreatus*

|     | avo         | dm          | EB   | ls          | Ncr         | pf          | pri  | TVS |
|-----|-------------|-------------|------|-------------|-------------|-------------|------|-----|
| avo | 1           |             |      |             |             |             |      |     |
| dm  | -0.19       | 1           |      |             |             |             |      |     |
| EB  | 0.10        | 0.17        | 1    |             |             |             |      |     |
| ls  | -0.13       | <b>0.96</b> | 0.16 | 1           |             |             |      |     |
| Ncr | 0.35        | 0.45        | 0.34 | 0.56        | 1           |             |      |     |
| pf  | -0.14       | <b>0.80</b> | 0.13 | <b>0.85</b> | 0.59        | 1           |      |     |
| pri | <b>0.80</b> | 0.12        | 0.25 | 0.21        | <b>0.76</b> | 0.20        | 1    |     |
| TVS | -0.30       | <b>0.78</b> | 0.08 | <b>0.82</b> | 0.49        | <b>0.72</b> | 0.03 | 1   |

avo: runt, Ncr: number of carpophore harvested, Pf: freshweight, dm: averagediameter, ls: stipe length, TVS: primordial follow-up rate and EB: biological efficiency.

### 3.1.8 Correlation between different fructification parameters of *P. eous*

Pearson's correlation coefficient (r) was used to estimate the degree of association between the different variables studied. Strong correlations were observed between the measured variables. The pairs ls-dm (0.96), pf-dm (0.80), pf-ls (0.85), pri-avo (0.85), pri-Ncr (0.76), TVS-dm (0.78), TVS-ls (0.72), and TVS-pf (0.78) have strong positive r values. This indicates a correlation between these variables.

This means that a higher number of primordia is associated with a higher number of runs and a higher number of carpophores harvested. Additionally, a longer stipe is correlated with a larger cap diameter and a greater mushroom mass. Furthermore, a higher survival rate of primordia is associated with longer stipes and broader caps. Table IV provides more details.

In summary, the pairs ls-dm, pf-ls, pri-avo, TVS-dm, TVS-ls, and TVS-pf showed strong correlations for both *P. eous* and *P. ostreatus*. However, for *P. ostreatus*, the r coefficient indicates that a higher number of primordia is associated with a higher fresh weight of the carpophore. In contrast, for *P. eous*, a higher number of primordia is associated with a higher

number of carpophores. This suggests a diversity of correlations between these two fungal species.

Table 4. Matrix of correlations between the eight variables measured in *P. eous*

|     | avo         | dm          | EB   | ls          | Ncr         | pf          | pri  | TVS |
|-----|-------------|-------------|------|-------------|-------------|-------------|------|-----|
| avo | 1           |             |      |             |             |             |      |     |
| dm  | -0.19       | 1           |      |             |             |             |      |     |
| EB  | 0.10        | 0.17        | 1    |             |             |             |      |     |
| ls  | -0.13       | <b>0.96</b> | 0.16 | 1           |             |             |      |     |
| Ncr | 0.35        | 0.45        | 0.34 | 0.56        | 1           |             |      |     |
| pf  | -0.14       | <b>0.80</b> | 0.13 | <b>0.85</b> | 0.59        | 1           |      |     |
| pri | <b>0.80</b> | 0.12        | 0.25 | 0.21        | <b>0.76</b> | 0.20        | 1    |     |
| TVS | -0.30       | <b>0.78</b> | 0.08 | <b>0.82</b> | 0.49        | <b>0.72</b> | 0.03 | 1   |

(avo: runt, Ncr: number of carpophore harvested, Pf: freshweight, dm: averagediameter, ls: stipe length, TVS: primordial follow-up rate and EB: biological efficiency)

### 3.2 Discussion

The colonization and fruiting capacity of two edible mushrooms, *Pleurotus ostreatus* and *P. eous*, were studied on different formulations compared to sawdust, used as a reference substrate in Côte d'Ivoire. Several formulations of rice straw-based substrates were inoculated with the spawn of *P. eous* and *P. ostreatus*.

A variation in the date of appearance of the mycelium front on different substrates was observed. The mycelial filament of *P. eous* was observed on all substrates three days after inoculation. In contrast, there were three different dates of appearance of the mycelial front for *P. ostreatus* (3rd, 9th, and 21st days).

Thus, the colonization of rice straw substrates depended on the mushroom species and the substrate. This diversity could be explained by enzyme production during the incubation phase. This assertion is corroborated by [15], who argue that, in some cases, high levels of additives are toxic to mycelial growth. In addition to the toxicity of the nutrients supplied, there is also nutrient competition. Contrary to these authors, [16] and [17] assert that the more nutrients are added to a substrate, the greater its susceptibility to infection and the greater the competition between oyster mushrooms and contaminants, which reduces the colonization speed of the fungus, hence the observed delay.

Incubation times for *P. ostreatus* ranged from 51 to 57 days, and for *P. eous* from 52 days on all culture substrates. These mycelial invasion times differ from those obtained by [18]. These authors state that invasion times vary between 15-30 days. This difference could be explained by the choice of species and substrates. These authors had grown *Lentinus sajor-caju* and *Pleurotus florida* on substrates based on Acacia pods, Terminalia superba sawdust, and sugarcane bagasse (*Saccharum officinarum*).

The addition of rice bran in increasing doses to the rice straw substrate reduced the colonization rate of *P. ostreatus* and *P. eous*. This finding shows that the addition of rice bran was not favorable to mycelial growth. This point of view is also confirmed by [19].

Biological efficiency (BE) varied according to the fungus species and growing medium. The lowest values of biological efficiency were obtained when growing *P. eous* on different substrates containing rice straw. These values ranged from 0% (F4) to 6% (F3). These values of biological efficiency are different from those obtained by [18]. According to them, the yield is between 10% and 12%. In fact, these authors had grown *Lentinus cladopus* on substrates based on sugarcane bagasse (*Saccharum officinarum*). These differences are simply a consequence of the choice of mushroom species and growing media.

#### 4. Conclusion

The primary objective of this study was to explore the feasibility of using rice straw as a substrate for cultivating edible mushrooms, specifically *Pleurotus ostreatus* and *P. eous*.

Key Findings:

- **Mycelial Growth:**
  - *P. eous* exhibited faster colonization, appearing on all substrates within three days.
  - *P. ostreatus* showed varying colonization rates, with the mycelium front appearing on the 3rd, 9th, and 21st days on different substrates.
- **Fruiting and Yield:**
  - *P. eous* generally had lower yields compared to *P. ostreatus*.
  - *P. ostreatus* produced more carpophores when grown on rice straw substrates with low rice bran content, compared to the control (sawdust).
  - *P. eous* had low carpophore production on rice straw substrates, regardless of rice bran content.
- **Correlation Analysis:**
  - A strong positive correlation was observed between the number of primordia and the fresh weight of carpophores in *P. ostreatus*.
  - In *P. eous*, a high number of primordia led to a high number of carpophores.

**DISCLAIMER (ARTIFICIAL INTELLIGENCE)**

Author(s) hereby declare that NO generative AI technologies such as Large Language Models (ChatGPT, COPILOT, etc) and text-to-image generators have been used during writing or editing of this manuscript.

## References

- [1]. FAO (Food and Agriculture Organization). (2015). The State of Food and Agriculture Social Protection and Agriculture: Breaking the Vicious Cycle of Rural Poverty. ISBN 978-92-5-108861-5.
- [2]. FAO (Food and Agriculture Organization). (2017). The State of Food and Agriculture 2017.
- [3]. Amani G., Cubaka A., Baguma G., Ireng E., Casinga C., and Cirimwami L. (2019). Effect of agricultural waste on the phenology and yield of two strains of *Pleurotus ostreatus* (Jacq, Fr.) Kummer (Fungi, Basidiomycotina).
- [4]. FIRCA (Interprofessional Fund for Agricultural Research and Consulting) (2011). « the rice sector. FIRCA, 40. Accessed August 31, 2019. <https://firca.ci>.
- [5]. Pérez J., Muñoz-Dorado J., Rubia T. & Martínez J., (2002) Biodegradation & biological treatments of cellulose, hemicellulose & lignin: an overview, *International Microbiology*, 5, 53-63.
- [6]. Wathumbe P.A. & Mada B. B. (2020), Production of edible carpophores of *Pleurotus sajor-caju* (Fr.) Singer based on rice husks, *African Journal of Environment and Agriculture*, 3(1). 16-22.
- [7]. Gévry M-F., Simard D., Roy G. (2009). Edible mushrooms of Lac-Saint-Jean.
- [8]. (Urban, 2004) Urban A.F. (2004). Produção de cogumelos por meio de tecnologia chinesa modificada, *Embrapa Recursos Genéticos e Biotecnologia*, Brasília (in Portuguese).
- [9]. Ngezimana W., Mtaita A.T., Shoko M., Tagwira M. (2008). Improving biological efficiency of Oyster mushroom, *Pleurotus ostreatus* Fr, (Polyporaceae), through composting and use of organic supplements, *Int, J, Biol, Chem, Sci.*, 2(1): 72-80.

- [10]. Zied C. D., Sanchez E. J., Noble R. and Pardo-Giménez, (2020), Use of Spent Mushroom Substrate in New Mushroom Crops to Promote the Transition towards A Circular Economy, <https://doi.org/10.3390/agronomy10091239>.
- [11]. Soko D. F., Dally T., Kotchi V., N'guessan F. F., Boye M. A.D, Ayolie K., Aké S. (2018) Influence of spwan age (seed) on the carpophores production and nutritional quality of the edible mushroom *Pleurotusotreatus* in Allokoua (Côte d'Ivoire), *Asian Journal of Science*, 59 p.
- [12]. Boulmerka A. &Laoufi O. (2017). Test of multiplication and cultivation of oyster mushrooms on a laboratory scale. Thesis presented for the award of the Master's Degree Field: Natural and Life Sciences Sector: Biological Sciences Specialty: Microbiology, Option: Biotechnology of Fungi: Fermentation and production of fungal substances. University of the Mentouri Brothers Constantine. Faculty of Natural and Life Sciences. Algeria. 42 p.
- [13]. Coulibaly S, Kouame D, Dro B, Yeboua BAA, Salla M. 2021. Potential honey flora of the Jean Lorougnon Guede University site (Daloa, Central West Ivory Coast): What is the beekeeping interest? *International Journal of Innovation and Scientific Research* 58(1), 26-38 P.
- [14]. N'Guessan A.P., Tano D.K. C., Yao N., Tah G, Tatiana T. and Dao H. (2024). Effects of the entomopathogenic fungi *Metarhizium anisopliae* and *Beauveria bassiana* on adults of *Coelaenomenoderalameensis* Berti and Mariau, 1999 (Coleoptera: Chrysomelidae) pest of oil palm (Daloa, Côte d'Ivoire). *International Journal of Biosciences*. ISSN: 2220-6655 (Print), 2222-5234 (Online) Vol. 24, No. 4, p. 71-82.
- [15]. Dibaluka, M.S. (2012). Study of macromycetes in the city of Kimvula and its surroundings (Bas-Congo/DR Congo): Diversity and productivity in open forest, ethnomycology and cultivation of edible saprotrophic species, Doctoral thesis, University of Kinshasa. 15-60.
- [16]. Oei, P. (1993), Mushroom cultivation, Collection « Le point sur » Technical guide, CTA, TOOL, GRET, Amsterdam, Netherlands, 318 P.

- [17]. Curvetto, N.R., D. Figlas, R.J. Devalis, and S.E. Delmastro. 2002a. Growth and productivity of different *Pleurotus ostreatus* strains on sunflower seed hulls substrate supplemented with N-NH<sub>4</sub><sup>+</sup> and/or Mn(II). *Bioresource Technology* 84(2):171-176
- [18]. Makanua D. I., Mpulusu D. S., Kasali L. J. and Degreef J. (2015). Culture of three species of edible lignicolous mushrooms from the Kinshasa region (DR Congo) on various composted lignocellulosic substrates, *Africa Science* 11(3): 241-261.
- [19]. Kiyuku et al. (2020). Kiyuku P., Dibaluk S. and Degreef J. (2020). Growing mushrooms in the African Great Lakes region. A guide for extension workers and smallholder farmers in rural areas. DOI (Digital object identifier): 10.5281/zenodo.3941509. ISBN (International Standard Book Number).
20. Wongamthing R, Nandi A, Ranjana Devi M, Mohan Babu Y, K Chowdhury A. Strategies for Improvement in Cultivation Practices of Oyster Mushrooms in North Bengal, India. *International Journal of Environment and Climate Change*. 2022 Aug 27;12(11):1863-79.
21. Mubasshira M, Aminuzzaman FM, Sultana N, Tanni JF. Impact of Different Substrates and Mother Cultures on Yield and Yield Attributes of Oyster Mushroom (*Pleurotus ostreatus*). *Asian Food Science Journal*. 2020 Dec 16;19(3):25-38.