

EFFECTS OF AQUEOUS LEAVE EXTRACTS OF LAUNAEA TARAXACIFOLIA (WILLD.) ON THE HIPPOCAMPAL DAMAGE IN STREPTOZOTOCIN-INDUCED DIABETIC WISTAR RATS

ABSTRACT

This study determined the anti-diabetic effects, assessed the antidepressant properties, and investigated the ameliorative effects of aqueous leaf extract of *Launaeataraxacifolia* (ALELT) on streptozotocin (STZ)-induced diabetic rats. It also evaluated its antioxidant effects on markers of oxidative stress markers in diabetic rats. Forty-two male Wistar rats (110-130 g) were divided into seven groups (A, B, C, D, E, F, and G) of six animals each. Group A was the control, while STZ solution (80 mg/kg) was administered IP to diabetic groups B, C, D, E, and F. At the sixth week of induction, group B was the STZ control; groups C, D, and E rats received 300 mg/kg, 200 mg/kg, and 100 mg/kg p-o of ALELT, respectively, for three weeks. Group F received 5 IU/day of insulin subcutaneously; group G received ~~300 mg/kg p-o of ALELT only~~ only 300 mg/kg p-o of ALELT for three weeks. After the study, the animals were sacrificed; the hippocampus was excised and fixed in a 10% neutral buffer solution for morphometric analysis. The results showed varying degrees of hippocampal damage and loss of hilum of Dentate gyrus in the H&E sections, plaque and tangles in the Bielschowsky sections, loss of myelin sheath in the Luxol Fast Blue sections, and dissolution of Nissl bodies in the Cresyl Fast Violet sections, followed by weight loss, abnormal rise in glucose levels, decrease in BDNF, decrease in insulin levels, memory loss in neurobehavioral tests, and decrease in markers of oxidative stress in the negative control rats.

Key words: *Launaeataraxacifolia*, Hippocampus, Streptozotocin, Diabetes neuropathy.

1.0 INTRODUCTION

Diabetes mellitus, originating from the Greek word 'diabetes' meaning "to pass through" and Latin 'mellitus' meaning "sweet," is a long-term autoimmune condition where the pancreas ~~is unable to~~ cannot produce sufficient insulin needed by the body. Diabetes can lead to secondary complications affecting the brain, kidneys, heart, and eyes. Diabetic brains can suffer from cognitive decline and depression.

Behavioral testing has shown a cognitive decline of up to 40% in diabetes patients (Dejgaard et al., 2020). Recently updated systematic reviews have also found that diabetes increases the risk of dementia (Ellis et al., 2023). Long-term research indicates a 50-100% higher incidence of dementia in diabetic patients (Lu et al., 2023). The hyperactivity of the hypothalamic-pituitary-adrenal axis (HPA axis) has also been linked to depressive disorders and diabetes (Kalarani et al., 2023). In Africa, botanical remedies have been used as an indigenous health care system since antiquity. *Launaeataraxacifolia* (Compositae) is a leafy vegetable found in African nations like Ghana, Senegal, Benin, and Nigeria, known for its cholesterol-lowering and blood pressure-regulating properties (Moussa et al., 2020). The antioxidants and hypoglycemic properties of *L. taraxacifolia* have been documented by (Gbadamosi et al., (2020). An analysis of *Launaeataraxacifolia* extracts in Nigeria and Ghana showed that they possess potassium, calcium, magnesium, ascorbic acid, tannins, and flavonoids. ~~It's possible that these compounds are~~ These compounds may be accountable for the plants' antioxidant, hypolipidemic, and glucose-lowering properties. The presence of phenolic compounds in *Launaeataraxacifolia* inhibits lipid peroxidation, scavenges OH radicals, and chelates Fe²⁺. The leaves include leucoanthocyanins, lycopene, phenolic acids, tannins, flavonoids, and beta-carotene in addition to saponins, terpenoids, steroids, and a variety of other compounds. (Adjei et al., 2022). Hence, this study significantly investigates the ameliorative effects of *L. taraxacifolia* leaf extract on hippocampal modification in STZ-induced diabetic rats.

Formatted: Font: Italic

Formatted: Font: Italic

Formatted: Font: Italic

Formatted: Font: Italic

Comment [NB1]: A few more studies regarding the antioxidative studies of the plant should be added to support the hypotheses.

Formatted: Font: Italic

2.0 MATERIALS AND METHODS

Comment [NB2]: Place of the study?

2.1 Ethical Clearance

Ethical clearance was granted by the Health Research and Ethics Committee (HREC) of the Institute of Public Health, OAU Ile-Ife, Nigeria (Reference No: IPH/OAU/12/2111).

2.2 Animal Management

Forty-two healthy male Wistar rats (110–130g) were purchased from the Pharmacology Department at Obafemi Awolowo University in Ile-Ife and acclimated for three weeks. They were housed in clean plastic cages and fed standard rat chow and water *ad libitum*.

Formatted: Font: Italic

2.3 Animal Grouping and Treatment

The animals were randomly divided into seven groups (A-G) of six animals each. Control group A received a single dose of citrate buffer solution with standard rat feed and water *ad libitum*. STZ (80 mg/kg) was administered intraperitoneally under fasting conditions to diabetes groups B, C, D, E, and F. Group G was the *Launaeataraxacifolia* control. At six weeks post-induction, group B was the STZ Negative Control Group; group C received 300 mg/kg p.o. of ALELT; group D received 200 mg/kg p.o. of ALELT; group E received 100 mg/kg p.o. of ALELT; group F received 5 IU/day of insulin subcutaneously; group G received 300 mg/kg p.o. of ALELT only. All treatments followed guidelines from the Committee on Animal Welfare and Protection.

Formatted: Font: Italic

Formatted: Font: Italic

Comment [NB3]: What is p.o.?

2.4 Extraction of *Launaea Taraxacifolia*

The extraction was done using the method described by Gbadamosi et al. (2020). Fresh leaves of *L. taraxacifolia* were collected from Pa Jekayinfagarden; it was identified, authenticated, air-dried, and pulverized at the herbarium of Botany Department, Obafemi Awolowo University with voucher number IFE-18049 issued. Two hundred fifty 250-g of the powder was macerated in 1.5 liters of distilled water for 72 hours, filtered, and the filtrate was concentrated to dryness using a rotary evaporator at 45°C for how long?.

Formatted: Font: Italic

2.5 Induction and Assessment of Diabetes

Diabetes was induced by a single intraperitoneal dose of 80 mg/kg STZ dissolved in 0.1M citrate buffer (pH 4.5) in 8-hour-fasted diabetic groups (B-F). Normal control rats were injected with citrate buffer alone. Blood glucose levels were evaluated using a glucometer (Adjei et al., 2020).

2.6 Fasting Blood Glucose (FBG) Determination

Fasting blood samples were taken from the tail veins of all rats after induction and monitored throughout ~~the period of the~~ experiment. A fine test glucometer was used to evaluate blood samples for glucose levels. The tail's end was cleansed with an alcohol swab and pierced with a lancet, and the drop was collected using a glucometer strip. Each reading was then appropriately recorded.

2.7. Body Measurement

Body weight was monitored twice weekly using a digital benchtop scale. Body weight variations were calculated with the weight on the first day of injection as the initial value.

2.8. Memory Exercise for Spatial Navigation

The radial-arm maze and ~~open-field~~~~open-field~~ maze were used in this test. The objective was to put the navigation memory of the rats to the test, which might be hampered by brain injury. This model was designed to assess spatial navigation memory while ~~taking into account~~~~considering~~ spatial orientation, perception, and locomotion, as described by Coppelino et al., (2023). The labyrinth was made of gray-painted wood. The radial-arm maze has a central platform (25 cm diameter) from which eight symmetrical arms (55 cm long 10 cm wide ~~th~~) with four baited arms and four non-baited arms emanated. To eliminate any aroma indications left by the previous subject ~~r~~Rat, the chamber was scrubbed with 95% ethanol ~~prior to before usage and before each future test~~. The ethanol was allowed to evaporate entirely ~~prior to before~~ testing. In brief, rats were placed separately on the center platform and permitted

to freely navigate the maze for 5 minutes. The time ~~it took the~~ taken by the animal to reach the baited arm served as the memory index. The rats were accustomed to the maze site ~~prior to~~ before the start of the test.

2.9. Mode of Sacrifice and Organ Collection

Rats were humanely sacrificed under diethyl ether anesthesia. The brains were removed, sectioned, and fixed in a 10% neutral buffer solution for histological analysis.

3.0. Biochemical Analysis

3.1 Catalase Activity

~~Peroxidase~~ The peroxidase function of CAT was measured using the method described by Johansson and Borg (1988).

3.2 Superoxide Dismutase Activity

The method of (Ijaz et al., 2023) was employed to analyze Superoxide dismutase activity on homogenized brain tissue.

3.3 Insulin Concentrations

An enzyme-linked immunosorbent test (ELISA) kit was used to assess serum insulin concentrations (Crystal Chem, Chicago, IL, USA).

3.4. Brain-Derived Neurotrophin Factor Concentrations

An enzyme-linked immunosorbent test (ELISA) kit was used to assess Brain-Derived Neurotrophin Factor concentrations (Crystal Chem, Chicago, IL, USA) at Biotech Laboratory, Taiwo oke area, Ilorin, Kwuara State, Nigeria.

3.5. Histology and Histochemical Analysis

Histological analysis of the hippocampus was done using the method described by Drury and Wallington (1980). Tissues were sectioned, stained, and analyzed Tissue blocks were cut into 5µm thick sections and stained.

3.6. Photomicrography and Histomorphometry

Slides were examined using a Leica DM750 microscope, and digital photomicrographs were produced with an attached Leica ICC50 camera. Imported into image J software for histomorphometric analysis were photomicrographs of hematoxylin and eosin dyed sections, an open office.org TM (000- 4.0 programming software for histomorphometric evaluation.) with a computer system. Digital photomicrographs were taken at x400 and x1000 magnification.

3.7. Statistical Analysis

Data were analyzed using GraphPad Prism 5. One-way ANOVA followed by Tukey's test for multiple comparisons was used. Results were presented as Mean ± SEM, with p-values < 0.05 considered significant.

4.0. RESULTS

4.1 Body Weight Change

There was no significant difference in body weight across groups before induction. STZ caused significant weight loss in diabetic groups. Post-treatment, groups C, D, and E showed weight gain compared to the STZ negative control group. Normal control group A and ALELT control group G gained weight.

Table .1: **Body Weight before Induction, Post Induction and Post Treatment**

Group (n= 6)	Initial Body Weight (g)	Post Induction Weight (g)	Post treatment Weight (g)	Gained or Loss Weight (g)
Group A	121.6±5.41	187.3±7.67	243.5±3.98	121.9±1.43
Group B	123±6.25	92.3±4.99	97.8±2.34	-25.2±3.91*
Group C	126±4.45	95.5±3.10	154.3±5.23	28.3±0.60
Group D	117.3±5.83	95.8± 4.09	146±5.28	28.7±3.55
Group E	120.6±3.42	97±2.55	129±2.30	9±1.12
Group F	127±4.54	91.5± 6.21	139±6.89	12±2.35
Group G	117.3±4.89	183.6±1.98	250±3.63	133±1.26

Values are mean ± Standard Error of Mean (SEM).*- means group B is significantly different from the normal control and treated groups

Fig.1.A.Effects of alelt on total body weight change in the hippocampus of treated diabetic rats

Total body weight changes in group A [waswere](#) 120±2.985 compare to total body weight change in group G 133± 4.431, this showed that group G gained little more weight compare to A, though not significantly different. Total body weight change in A (120±2.985) was significantly different to weight change in B (-20 ± 2.348), C (30 ± 5.237), D (25 ± 5.275), E (11 ± 2.306), and F (6 ± 3.890; p < 0.001). STZ caused significant decrease in the total body weight change in the negative control group B (-20 ±2.348; p < 0.001) compare to treated group CDE and F, 300mg ALELT treated group C (30 ±5.237)

was significant to EFG (11 ± 2.306 , 6 ± 3.890 ; $P < 0.001$), 200mg ALELT treated group D was significant to E and F.

Fig.1.B. Effects of alelt on percentage body weight change on hippocampus of diabetic rats

The percentage body weight change in group A was (100 ± 2.985) compare to percentage body weight change in group G (110 ± 2.431). There was no significant different. Percentage body weight change in A (100 ± 2.985) was significantly different to percentage body weight change in B (-20 ± 2.348), C (30 ± 5.237), D (29 ± 5.275), E (11 ± 2.306), and F (20 ± 3.890 ; $p < 0.001$). STZ caused significant decrease in the percentage body weight change in the negative control group B (-20 ± 2.348 ; $p < 0.001$) compare with treated group C, D, E and F. Group C (30 ± 5.237) was significantly different to E, F and G (11 ± 2.306 , 6 ± 3.890 ; $P < 0.001$), 200mg ALELT treated group D was significant to E and F.

Fig.1.C.Effects of alelt on brain weight change in treated compared to untreated diabetic rats

Group A is significantly different from B ($P < 0.001$), C ($p < 0.05$) E ($P < 0.001$), B is significantly different from D ($P < 0.05$), G ($P < 0.001$) and E is significantly different from group G ($P < 0.001$).

Comment [NB4]: Should be in capital letters

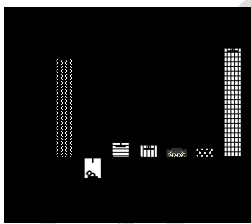


Fig.1A.

Fig.1.A. Effects of alelt on total body weight change in the hippocampus of treated diabetic rats

Comment [NB5]: Capital letters

Fig.1B. Fig.1.B. Effects of ~~ALEL~~alelt on percentage body weight change on the hippocampus of diabetic rats

Formatted: Font color: Red

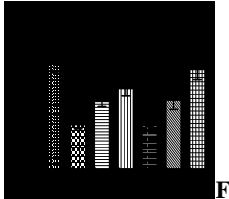
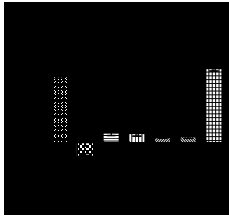


Fig.1C

Fig.1.C. Effects of alelt on brain weight change in treated compared to untreated diabetic rats

Fig.2A. Effects of stzon neurobehavioural activities of the diabetic rats, 4th week of induction

Comment [NB6]: write in capital letters

Group A ~~was is~~ significantly different from B, C, D, E, and F, but not significantly different from G ($P < 0.001$), Group B, C, D, E, and F ~~were are~~ significantly different from G ($P < 0.001$). ~~There was loss of memory. Memory loss~~ in diabetic groups B, C, D E and F in the first 4th week of ~~i~~induction~~wasfound~~.

Fig.2B. Effects of alelt on line crossed in open field maze after the last treatment

Comment [NB7]: write in capital letters

Group A ~~was is~~ significantly different when compared with groups B, C, D and E ($P < 0.001$), and F ($P < 0.01$). Group B ~~was is~~ significantly different from the treated groups C ($P < 0.01$, D, F and (0.001) and to G ($P < 0.001$).

Fig.2C. Effects of alelt on time spent before finding food in radial arm maze in diabetic rats

Comment [NB8]: Capital patters

Group A was is significantly noteworthy compared with group B, E and F ($p < 0.001$). Group B was is significantly noteworthy compared with C ($p < 0.001$), D ($p < 0.001$), E ($p < 0.001$), F ($p < 0.001$) and G ($p < 0.001$). Group C was is significantly noteworthy compared to E ($p < 0.001$), group D was is statistically noteworthy compared with group E ($p < 0.001$) and F ($p < 0.05$), group E was is significantly different from G ($p < 0.001$) and F was is significantly different from G ($p < 0.01$).

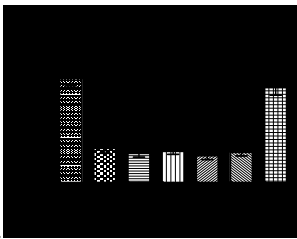


Fig.2A.

Fig.2A. Effects of stz on neuro-behavioural activities of the diabetic rats, 4th week of induction

Comment [NB9]: Capital letters

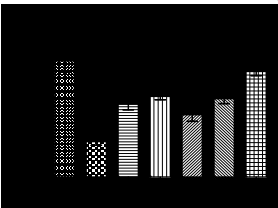


Fig.2B.

Fig.2B. Effects of alelt on line crossed in open field maze after the last treatment

Comment [NB10]: Capital letters

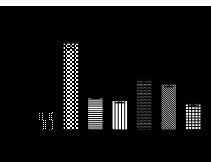


Fig.2C.

Fig.2C. Effects of ALELT on time spent before finding food in radial arm maze in diabetic rats

Comment [NB11]: Capital letters

Table.2. Effects of ALELT on fasting blood glucose in the hippocampus of STZ- induced diabetic rats

Comment [NB12]:

Formatted: Font color: Red

A day before induction of STZ, the glucose levels of the research animals across the group were aligned (97.3±1.80-102.7±3.23) with no statistical difference. STZ caused a significant increase in blood glucose levels of diabetic groups after induction (508±26.91). The 200 mg/ kg and 300 mg/kg of ALELT were able to reverse the diabetic effect of STZ on the hippocampus of the diabetic rats, 200mg/ kg of ALELT appeared to be better treated compared to 300mg/ kg as the glucose level was well regulated by the 200mg / kg of the extract (116±7.39). 5 UI of Insulin control group F showed a surge decrease in the glucose level (76.0±14.63) compared with a normal control group (110±3.76).

Table 2. Effects of ALELT on Fasting Blood Glucose Levels

Groups (N=6)	Initial Glucose (mg/dl)	1st wk of Induction (mg/dl)	2nd wk of Induction (mg/dl)	4th wk of Induction (mg/dl)	6th wk of Induction (mg/dl)	3rd wk of Induction (mg/dl)	Post Treatment (mg/dl)
Group A	100±1.66	104.6±2.10	107±2.39	105.9±4.44	97.5±5.70	110±3.76	
Group B	100.8±1.60	472±18.10	508±26.91	417±13.0*	397.±32.91	308±27.86	
Group C	100±3.40	462.5±28.87	508±23.82	448±24.67	374.2±15.64	135±10.62	
Group D	102.7±3.23	468.8± 32.09	441.8±13.07	444.8±28.51	364.8±12.70	116±7.39	
Group E	99.5±0.84	473±28.00	449.3±19.05	467±17.80	389±14.60	235±45.00	
Group F	100±3.63	459.5±32.00	466±22.82	422.5±13.56	353±14.60	76.0±14.63	
Group G	97.3±1.80	103±2.08	100±5.60	102.3±5.60	105±4.21	109±3.38	

Table.2: Table showing the effects of ALELT on fasting blood glucose level before induction, 1st , 2nd, 4th , 6th week of induction and 3rd week post treatment of STZ-induced diabetic rat .

Fig.3. Effects of ALELT on SOD concentration of STZ- induced diabetic wistar-Wistar rats

Normal control group A ~~was is~~ significantly different from group B ($p < 0.001$) and E ($p < 0.01$), ~~and~~ group E ~~was is~~ significantly different from G ($p < 0.05$). Superoxide dismutase level was brought down in the STZ- control group compared with other treated groups.

Fig.4. : Effects of ~~alelt~~ on catalaze activities in ~~STZstz~~-induced diabetic wistar rats

Comment [NB13]: Capital letter

Group A is significantly different from B ($p < 0.001$), E ($p < 0.05$), group B is significantly different from C ($p < 0.05$), D ($p < 0.01$) and G ($p < 0.001$), group E is significantly different from G ($p < 0.05$)

Fig.5. Effects of ~~ALEL~~~~Talelt~~ on insulin activities in ~~STZ stz~~-induced diabetic ~~wistar~~ ~~Wistar~~ rats

Group A ~~was is~~ significantly different compared with B ($p < 0.01$), ~~and~~ group B ~~was is~~ significantly different from C, D, F and G ($p < 0.001$). Group E ~~was is~~ significantly different compared with group F ($p < 0.01$) and group G ($p < 0.05$).

Fig.6. Effect of ~~alelt~~ on BDNF activities in ~~stz~~- induced diabetic ~~wistar~~ ~~Wistar~~ rats

Comment [NB14]: Capital letters

Comment [NB15]: Capital letters

Group A ~~was is~~ significantly different to B ($P < 0.001$), C ($p < 0.05$), E ($p < 0.001$) and F ($p < 0.05$). B ~~was is~~ significantly different ~~to from~~ C, D, F, ~~and~~ G ($P < 0.001$), ~~and~~ group D ~~is was~~ significantly different compared to E (0.01) and G ($P < 0.001$).

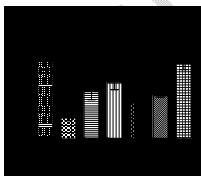


Fig.3.

Fig.3. Effects of ~~alelt~~ on SOD concentration of ~~stz~~- induced diabetic

Comment [NB16]: Capital letters

~~wistar~~ ~~Wistar~~ rats

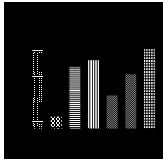


Fig.4.

Fig.4. : Effects of ALELT on ~~catalaze~~ catalase activities in STZ-induced diabetic ~~wistar~~ Wistar rats

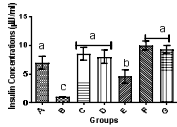


Fig.5

Fig.5. Effects of ~~alelt~~ alelt on insulin activities in ~~stz~~ stz-induced diabetic ~~wistar~~ Wistar rats

Formatted: Font color: Red

Formatted: Font color: Red

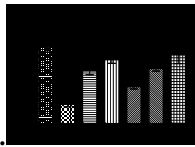


Fig.6.

Fig.6. Effect of ~~ALELT~~ alelt on BDNF activities in STZ- induced diabetic ~~wistar~~ Wistar rats

Formatted: Font color: Red

Formatted: Font color: Auto

Fig.7. Effects of ~~ALELT~~ alelt on total neuronal density of CA 1 in ~~stz-induced~~ stz-induced diabetic rats

Formatted: Font color: Red

Formatted: Font color: Red

Group A ~~was~~ is significantly different compared with B ($P < 0.001$), C ($P < 0.05$), E ($p < 0.001$), and F ($p < 0.05$). Group B ~~was~~ is significantly different from C, D, F, ~~and~~ G with ($p < 0.001$), D ~~was~~ is statistically significant from E and G ($p < 0.01$)

Fig.8. Effects of ALELTalelt on total neuronal density of ~~cornus~~Cornusammonis ammonia2 (CA2) in diabetic rats

Formatted: Font color: Red

Group A was -is significantly different from B and E with the P value ($P < 0.001$), B is significantly noteworthy to C, D, E, F and G ($p < 0.001$) and E was is significantly different from G ($P < 0.001$)

Fig.9. Effects of ALELTalelt on total neuronal density of CA3 neurons in diabetic rats

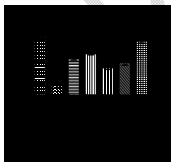
Group A was is significantly different from B ($p < 0.001$), C ($p < 0.05$), E ($p < 0.001$) and F ($p < 0.01$). Group B was-is statistically significant from C, D ($p < 0.001$) E ($p < 0.01$), F ($p < 0.001$) and G ($p < 0.001$). Group D was-is significantly different from E ($p < 0.05$), and G ($p < 0.01$), E was is significantly different from G ($p < 0.05$).

Fig.10. Effects of ALELTalelt of total neuronal density of dentate gyrus in STZ- induced rats

Group A ~~is significantly different~~significantly differed from B, C, D, E, F and G ($p < 0.001$). Group B ~~was issignificantly different~~significantly different from, C, D, E, F and G ($p < 0.001$), C was is significantly different from G ($p < 0.05$), D was is statistically noteworthy compared to G ($p < 0.01$), group E was -is significant different from G ($p < 0.001$) and F was is significantly different from G ($P < 0.001$)

Fig.7.

Fig.7. Effects of ALELTalelt on total neuronal density of CA 1 in STZ- induced diabetic rats



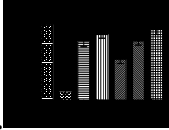


Fig.8.

Fig.8. Effects of [ALELT](#) on total neuronal density of [Cornu Ammonis 2 \(CA2\)](#) in diabetic rats

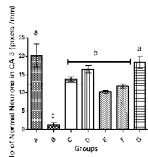


Fig.9.

Fig.9. Effects of [ALELT](#) on total neuronal density of CA3 neurons in diabetic rats

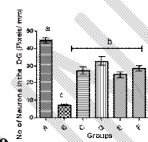


Fig.10

Fig.10. Effects of [ALELT](#) of total neuronal density of dentate gyrus in STZ- induced rats

Plate 1: Effects of ALELT on general histoarchitecture of CA1

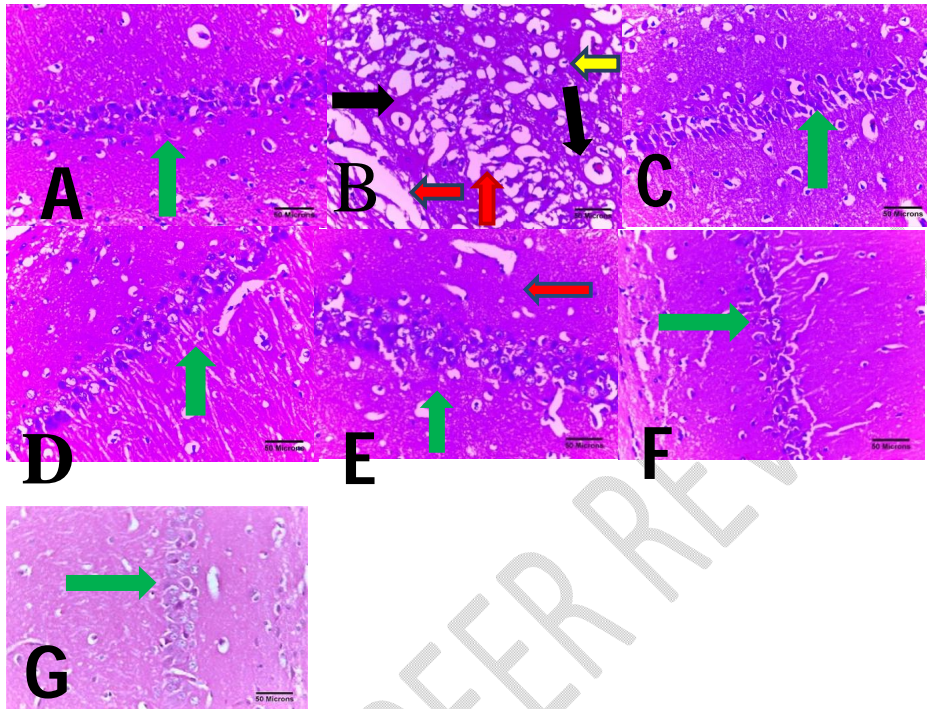


Plate 1: Selected photomicrographs of CA1 region of hippocampus of the group-groups A, B, C, D, E, F, and G. The red arrow identifies the damage area, the black arrow identifies eosinophilic necrosis, the yellow arrow identifies pyknotic nucleus amid associated vacuolations. By contrast, the green arrow identifies relatively normal neurons, and the blue arrow identifies myelin sheath. H & E \times 400. (Scale bar 50 μ m)

Plate 2: GENERAL HISTOARCHITECTURE OF CA2 IN DIABETIC RATS.

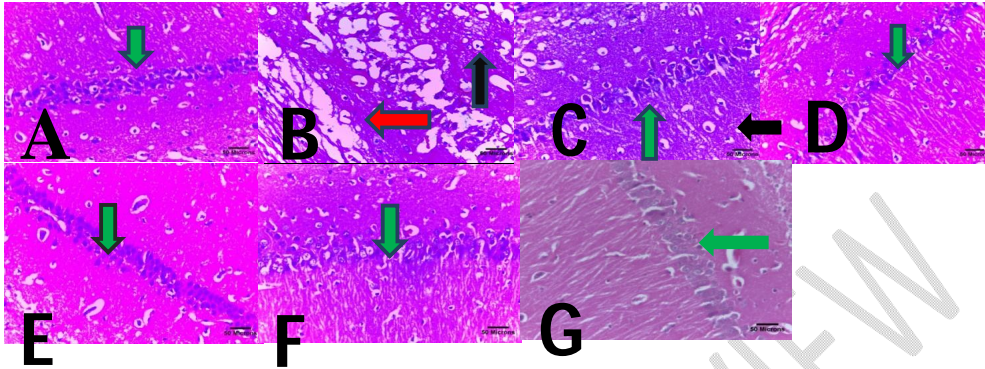
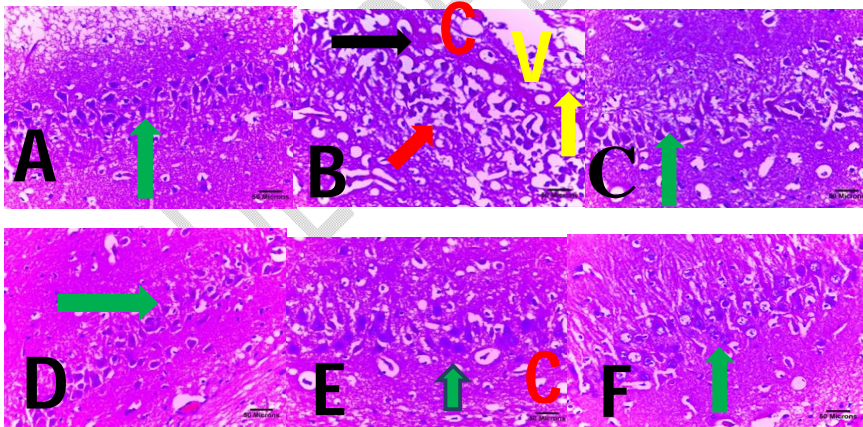


Plate 2: Selected photomicrographs of [the](#) CA2 region of [the](#) hippocampus of group A, B, C, D, E, F, and G. The black arrow identifies eosinophilic necrosis, the red arrow identifies pyknotic nucleus amid associated vacuolations. By contrast, the green arrow identifies relatively normal neurons, and the red arrow identifies basophilic-substance in the cytoplasm. H&E \times 400. Scale bar 50 μ m).

Plate 3: EFFECTS OF ALELT ON GENERAL HISTOARCHITECTURE OF CA3.



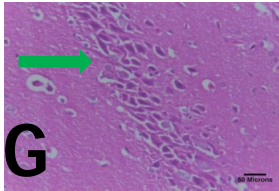


Plate 3: Selected photomicrographs of CA3 region of hippocampus of group A, B, C, D, E, F, and G. The black arrow identifies eosinophilic necrosis, the yellow arrow identifies pyknotic nucleus amid associated vacuolations (V) and total chromatolysis connoted with red C. By contrast, the green arrow identifies a relatively normal neurons relatively normal neurons, and the red arrow identifies basophilic-substance. (H&E \times 400, Scale bar 50 μ m).

Plate 4: GENERAL HISTOARCHITECTURE OF DENTATE GYRUS

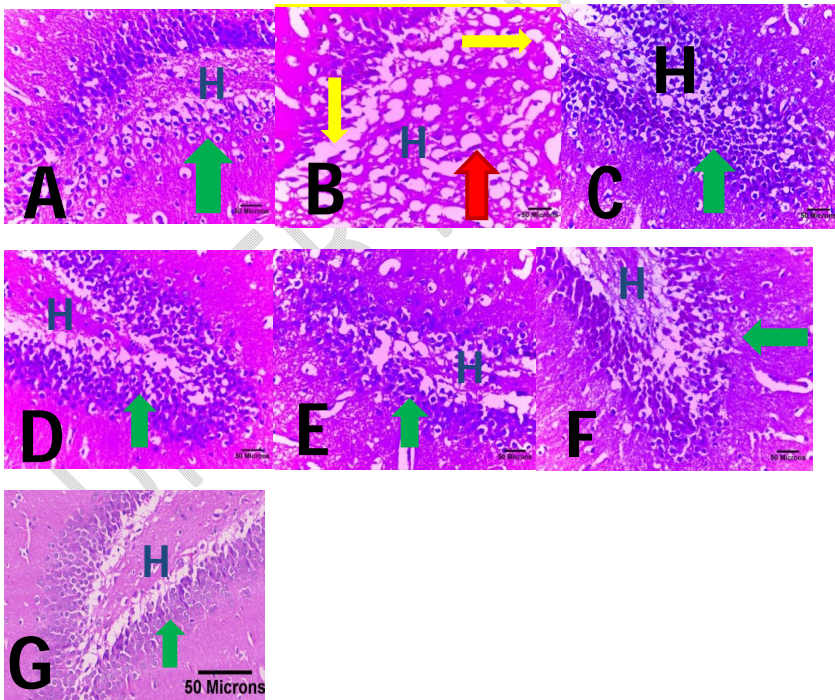


Plate 4: Selected photomicrographs of DG region of the hippocampus of ~~group-groups~~ A, B, C, D, E, F, and G. The red arrow identifies eosinophilic necrosis, and the yellow arrow identifies pyknotic nucleus amid associated vacuolations. By contrast, the green arrow identifies relatively normal granular neurons.

Group (A) showed numerous neuronal granular cells indicated with green ~~arrow-arrows~~ which are well aligned on the Dentate Gyrus (DG) with preserved density and preserved hilum of the DG. Group (B) showed loss of neuronal density, loss of hilum of the DG vacuolations, neuronal dispersal, neuronal atrophy, presence of eosinophilic necrotic cells and chromatolysis. Group (C) showed restored neuronal density, preserved DG hilum, numerous granular cells were restored. Group (D) showed preserved granular cells indicated with blue arrow, restored neuronal density and preserved hilum of the Dentate Gyrus(H). Group (E) showed some levels of recovery with preserved hilum of the DG amidst vacuolations. Group (F) showed restored neuronal density with preserved hilum of the dentate gyrus. Group (G) showed preserved granular cells and hilum of the DG. H&E \times 400 (Scale bar 50 μ m).

Plate5: EFFECTS OF ALELT ON MYELIN SHEATH CONTENT IN CA1

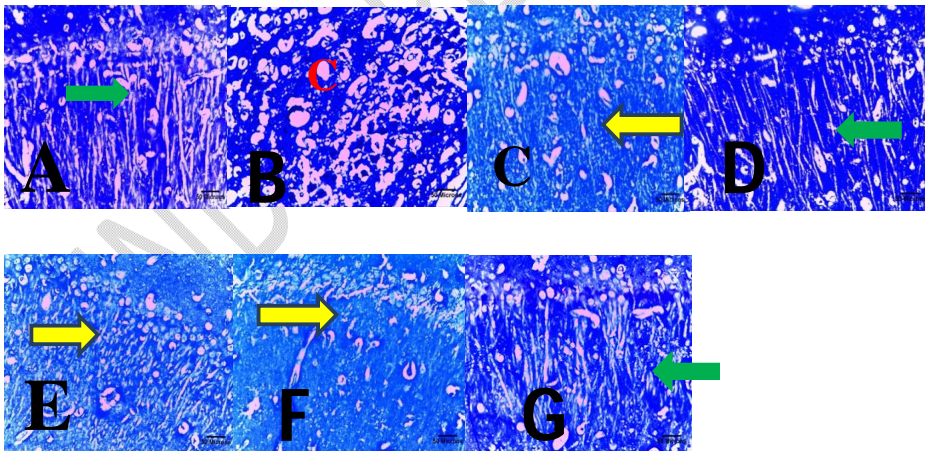


Plate 5: Selected photomicrographs of the CA1 region of the hippocampus of groups A, B, C, D, E, F, and G. The red arrow identifies pyknotic nucleus amid associated vacuolations and demyelination. The red circle identifies the fibrous scar and area of total chromatolysis. By contrast, the green arrow identifies relatively normal neurons and strands of myelin sheath while the yellow arrow shows some level of recovery from demyelination. LFB × 1000. Scale bar 20µm.

Plate 6. EFFECTS OF ALELT ON NISSL SUBSTANCE CONTENT OF CORNU AMMONIS 1

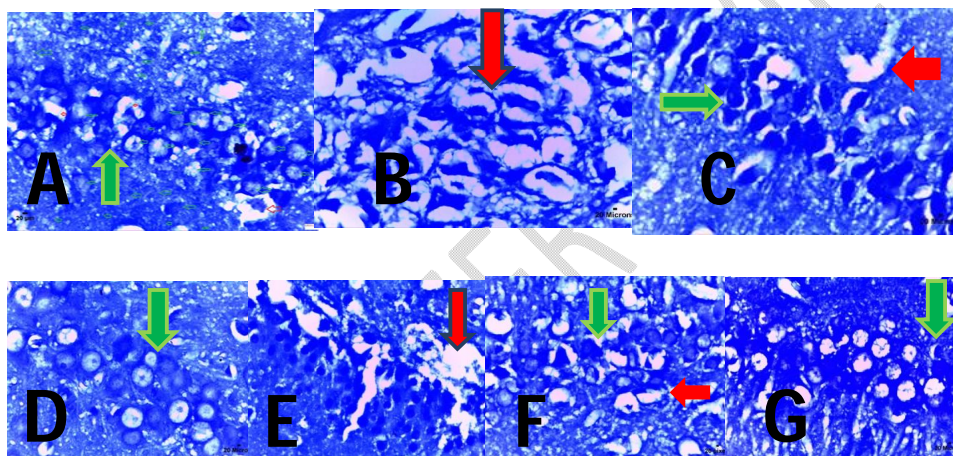


Plate 6: Selected photomicrographs of the CA1 region of the hippocampus of ~~group~~ groups A, B, C, D, E, F, and G. The red arrow identifies degenerated neurons amid associated vacuolations. By contrast, the green arrow identifies relatively normal neuron nissl body in Cresyl Fast Violet × 1000 staining (Scale bar 20µm).

Discussion

It has been suggested that the development of diabetes-related problems began with the mitochondrial generation of free radicals triggered by hyperglycemia (Bolzán et al., 2018). Numerous diabetes-related

pathophysiological issues may start and worsen as a result of a surge in free radical generation and a decrease in antioxidant reactions, according to research conducted on diabetic patients (Zheng et al., 2022). According to Adinortey and colleagues, *Launaeataraxacifolia* contains useful quantities of minerals and phytochemicals like calcium, iron, magnesium, potassium, flavonoids, terpenoids, tannins, and saponins. *Launaeataraxacifolia* effects on blood glucose have been reported by a few researchers (Adinortey et al., 2019). Studies have found that doses as low as 5 g/ kg were extremely safe and tolerable, with no animal deaths reported. In the present study, STZ-induced diabetes caused notable weight loss across the diabetic groups compared with normal control group (A). This may be due to breakdown of tissues proteins in diabetic rats. Hyperglycemic state was confirmed on the 3rd day of induction with fasting glucose ranging from 500mg/ dl and above, at the 6th week of STZ-induction, hyperglycemic state was sustained at 280 mg /dl and above across the diabetic group. This corresponded to the report by (Fagbohun et al., 2020 and Adjei et al., 2022) that diabetes was confirmed on the 3rd day of STZ induction and was sustained in the diabetic group with blood glucose concentration typically greater than 250mg/dl. A significant decrease in fasting blood glucose was observed in the 200 mg/ kg and 300 mg/ kg body weight doses of ALELT treated groups C and D compared with the non- treated diabetic group B. This may be due to the presence of quercetin in *Launaeataraxacifolia*; a natural flavonoid found abundantly in vegetables and fruits that inhibit gut enzymes, such as alpha-glucosidase, an enzyme found at the borders of the intestinal brush that is essential for transforming complex sugars into glucose for easy absorption as reported by. This corroborated with the report of (Gbadamosi et al., 2020) that ALELT at 300 mg/ kg had greater blood glucose lowering effects when compared with glibenclamide treated group. This reduction was also noted in the insulin treated group F. It was observed that 5 I.U /day of insulin caused excessive fall in glucose level below 70 mg/ dl in group F. This was contrary to (Pinheiro et al., 2022) who considered insulin at 5 IU/ day as efficient for keeping

Comment [NB17]: Add few more references

Comment [NB18]: And higher limit?

the glycemic levels close to normal in rat. A notable fall in insulin level was observed in the STZ control group (B) compared to normal control group A and the treated group C, D, E, F and G. This may be due to the destruction of beta cells that are responsible for the production of insulin in the pancreatic islet of Langerhans; it may also be as a result of the decrease in glucose level. Image J analysis of photomicrographs stained sectioned (LFB) revealed that there was total distortion of myelin sheath in CA1 in group B, which may be responsible for the inhibition of impulse transmissions in group B compared with group A and the treated group C and D. Shorten and thicken processes of myelin sheath was observed in group E and F, the myelin sheath in group D showed rapid recovery compared to group C, E and F. There ~~is~~ ~~was~~ ~~an~~ evidence of demyelination in group B and E. This may be the reasons for the uncoordinated movement during ~~an~~ open field maze test and ~~reason why the rats of~~ group B ~~took~~ ~~spent~~ more time in the radial arm maze before they could recognize the baited arm. This corroborated with the findings of Edwards et al., who stated that the relationship between diabetes and depression was reciprocal as depression was also considered a risk factor for the development of diabetes (Edwards et al., 2023). A very notable novel in this research work is the potential of *Laumaeataraxacifolia* being able to restore the hilum of DG which was loss in the STZ-group. The study demonstrated the protective effects of *L. taraxacifolia* against STZ-induced hippocampal damage in diabetic rats, evidenced by improvements in body weight, glucose levels, insulin, BDNF, and oxidative stress markers. The histological analysis corroborated these findings, showing less hippocampal damage in treated groups.

Conclusion

This study concluded that ALELT poses anti-diabetic effects and its extract possibly exerts these effects by reducing fasting blood sugar levels, increased insulin secretion or decreased intestinal glucose absorption. Further studies are warranted to elucidate more on its mechanisms and therapeutic potential.

REFERENCES

1. Adjei, D. G. G., Mireku-Gyimah, N. A., Sarkodie, J. A., Nguessan, B. B., Kodua, E., Amedior, J. K., & Nyarko, A. K. (2022). Antidiabetic properties of an ethanolic leaf extract of *Launaeataraxacifolia** (Willd.) Amin ex C. Jeffrey (Asteraceae) in SD rats. *Clinical Phytoscience*, 8(1), 1-15.
2. Adinortey, M. B., Agbeko, R., Boison, D., Ekloh, W., Kuatsienu, L. E., Biney, E. E., & Nyarko, A. K. (2019). Phytomedicines used for diabetes mellitus in Ghana: A systematic search and review of preclinical and clinical evidence. *Evidence-Based Complementary and Alternative Medicine*.
3. Bolzán, A. D., & Bianchi, M. S. (2018). DNA and chromosome damage induced by bleomycin in mammalian cells: An update. *Mutation Research/Reviews in Mutation Research*, 775, 51-62.
4. Coppolino, S., & Migliore, M. (2023). An explainable artificial intelligence approach to spatial navigation based on hippocampal circuitry. *Neural Networks*, 163, 97-107.
5. Dejgaard, T. F., Schmidt, S., Frandsen, C. S., Vistisen, D., Madsbad, S., Andersen, H. U., & Nørgaard, K. (2020). Liraglutide reduces hyperglycaemia and body weight in overweight, deregulated insulin-pump-treated patients with type 1 diabetes: The lira pump trial—a randomized, double-blinded, placebo-controlled trial. *Diabetes, Obesity and Metabolism*, 22(4), 492-500.
6. Ellis, D. A., Cutchin, M. P., Carcone, A. I., Evans, M., Weissberg-Benchell, J., Buggs-Saxton, C., & Worley, J. (2023). Racial residential segregation and the health of Black youth with type 1 diabetes. *Pediatrics*, 161, 220-588.

7. Edwards, N., Walker, S., Paddick, S. M., Prina, A. M., Chinnasamy, M., Reddy, N., & Dotchin, C. (2023). Prevalence of depression and anxiety in older people in low-and middle-income countries in Africa, Asia and South America: A systematic review and meta-analysis. *Journal of Affective Disorders*, 7(4), 88-90.
8. Gbadamosi, I. T., Adeyi, A. O., Oyekanmi, O. O., & Somade, O. T. (2020). *Launaeataraxacifolia* leaf partitions ameliorate alloxan-induced pathophysiological complications via antioxidant mechanisms in diabetic rats. *Metabol Open*, 6, 100029. doi:10.1016/j.metop.2020.100029
9. Ijaz, M. U., Mustafa, S., Hamza, A., Almutairi, B. O., Almutairi, M. H., & Riaz, M. N. (2023). Evaluation of possible protective role of glabridin against gentamicin-instigated nephrotoxicity via attenuation of oxidative stress. *Journal of King Saud University-Science*, 102692.
10. Kalarani, I. B., & Veerabathiran, R. (2023). Diabetes and neurological disorder. In *Advances in Diabetes Research and Management* (pp. 63-79). Springer Nature Singapore.
11. Lu, J., Yang, H., Shi, L., Sheng, X., Huo, Y., Liu, R., & Hu, R. (2023). Associations between primary healthcare experiences and glycemic control status in patients with diabetes: Results from the Greater Bay Area Study, China. *International Journal of Environmental Research and Public Health*, 20(2), 1120.
12. Moussa, M. I. D., Alashi, A. M., Sossa-Vihotogbe, C. N. A., Akponikpe, P. B. I., Baco, M. N., Djènontin, A. J., & Akissoé, N. H. (2020). Proximate composition, mineral profile and trypsin-inhibitory activity of West African leafy vegetables: Influence of urea micro-dosing and harvest time. *Polish Journal of Food and Nutrition Sciences*, 70(2), 120-123.
13. Olatoye, A. M., Olayemi, O. T., & Olatoye, A. A. (2022). Histomorphological Comparative Studies of Livolin Forte and *Vernonia amygdalina* on Ethanol Induced Hepatotoxicity in Adult

Wistar Rat. *Asian Journal of Research in Medicine and Medical Science*, 4(1), 91–99. Retrieved from <https://jofmedical.com/index.php/AJRMMS/article/view/23>.

14. Pinheiro, S. L., Bastos, M., Barros, L., Melo, M., & Paiva, I. (2022). Flash glucose monitoring and glycemic control in type 1 diabetes with subcutaneous insulin infusion. *Acta Diabetologica*, 59(4), 509-515.
15. Xu, M., Xue, H., Kong, L., Lin, L., & Zheng, G. (2023). Smilax china L. polyphenols improve insulin resistance and obesity in high-fat diet-induced mice through IRS/AKT-AMPK and NF- κ B signaling pathways. *Plant Foods for Human Nutrition*, 1-8.

Formatted: Font: Italic

UNDER PEER REVIEW