

7 **ABSTRACT**

**Aims:** The aim of the study is to use biomarkers to indicate drought-induced changes in soil microbial communities on presumed drought-impacted soils in some selected Sahel region.

**Study design:** A correlational study design was used to examine the influence of soil pH in relation to other soil properties (e.g., organic carbon, nitrogen, pH), while PLFA biomarkers were analysed using principal component analysis and descriptive statistics.

**Place and Duration of Study:** The Sahel region of sub-Saharan Africa, which includes Nigeria and the Niger Republic, was the subject of the May–October 2021 study.

**Methodology:** A study using phospholipid fatty acid (PLFA) biomarkers investigated drought-induced changes in soil microbial communities in the Sahel region. Analysis of 90 soil samples revealed significant correlations between PLFA profiles and soil properties.

**Results:** The study emphasises the significance of site-specific soil management techniques, especially in regions with low levels of nutrients, nutrient availability, and soil organic matter (SOC). In regions with low SOC, SOM, and nutrients, targeted organic and inorganic additions can be required to improve soil fertility. While sandy soils in G/Doki (87.1%) would benefit from organic additions for better water retention and nutrient-holding capability, Nkonni's high clay concentration could necessitate better drainage management to avoid waterlogging. Certain PLFA indicators are linked to bacteria and fungus, including C18:1cis9 and C18:1ω9. PLFA biomarkers are impacted by drought's alteration of soil microbial populations. To promote soil health and fertility conservation, it is essential to monitor soil microbial dynamics and implement sustainable agricultural methods.

**Conclusion:**

Soil microbial populations are greatly impacted by drought, which alters PLFA indicators. While certain biomarkers, like C18:0 and C18:1, suggest broad microbial activity, others, including C18:1ω9 and C18:1cis9, are linked to fungus. The following markers are linked to Gram-positive bacteria: i15:0, a15:0, i16:0, i17:0, and cy17:0 for Gram-negative bacteria, which are useful tools for evaluating the effects of soil management techniques, environmental stressors, and climatic variability on agricultural soils. These changes demonstrate the potential of PLFA analysis to connect soil microbial dynamics with soil health and fertility. Drought affects soil microbial communities, affecting soil pH. Higher pH increases organic carbon, organic matter, and calcium levels, while nitrogen and phosphorus levels are minimally affected.

8 *Keywords:* [drought, soil microbial biomarkers, nutrient levels, Sahel region]

9  
10 **1. INTRODUCTION**  
11

12 Drought is a recurring event in arid regions. Improved land use and management practices are essential to mitigating  
13 its effects. Studies have shown that while climate change poses challenges, human land-use practices have a larger,  
14 more immediate impact on desertification [1]. Human and livestock activity has a more significant impact on arid

15 environments than anticipated climatic changes [2]. Future climate change is likely to have significant feedback  
 16 effects on soil respiration through alterations in vegetation structure, particularly in heterogeneous ecosystems like  
 17 Mediterranean shrublands and deserts. According to [3], there is interconnectedness of precipitation, vegetation, and  
 18 soil carbon processes, with important implications for understanding dryland ecosystem responses to global climate  
 19 change.

20  
 21 An insight into how microbial communities have historically adapted to changing moisture regimes and informed  
 22 future predictions is best understood if the cumulative and lagged effects of drought, historical studies combining  
 23 sediment records, paleoecological methods, and PLFA biomarker analysis are extensively studied. Soil  
 24 physiochemical properties significantly influence microbial communities, which are reflected in phospholipid fatty  
 25 acid (PLFA) biomarkers. PLFA analysis is a sensitive tool for monitoring soil health and fertility. However, the  
 26 relationships between soil physiochemical properties and PLFA biomarkers remain poorly understood. Cruz-Paredes  
 27 *et al.* [4] discovered that drought decreases microbial biomass and alters community composition, with significant  
 28 changes in PLFA biomarkers under prolonged dry conditions. Similarly, Fierer *et al.*[5] proved that microbial  
 29 communities in arid soils respond rapidly to changes in water availability, highlighting the importance of long-term  
 30 studies on microbial adaptation. Drought is said to reduce microbial activity and functional diversity, with shifts  
 31 toward drought-tolerant organisms detectable through PLFA analysis [6].

32 Quideau *et al.* [7] used a statistical approach to identify patterns and correlations between PLFA biomarkers and soil  
 33 properties, such as organic carbon, nitrogen, and pH. This study investigates the relationships between soil  
 34 physiochemical parameters and PLFA biomarkers, providing insights into the complex interactions governing soil  
 35 ecosystem functioning.

36  
 37 **2. MATERIAL AND METHODS**  
 38 **2.1 STUDY AREA**

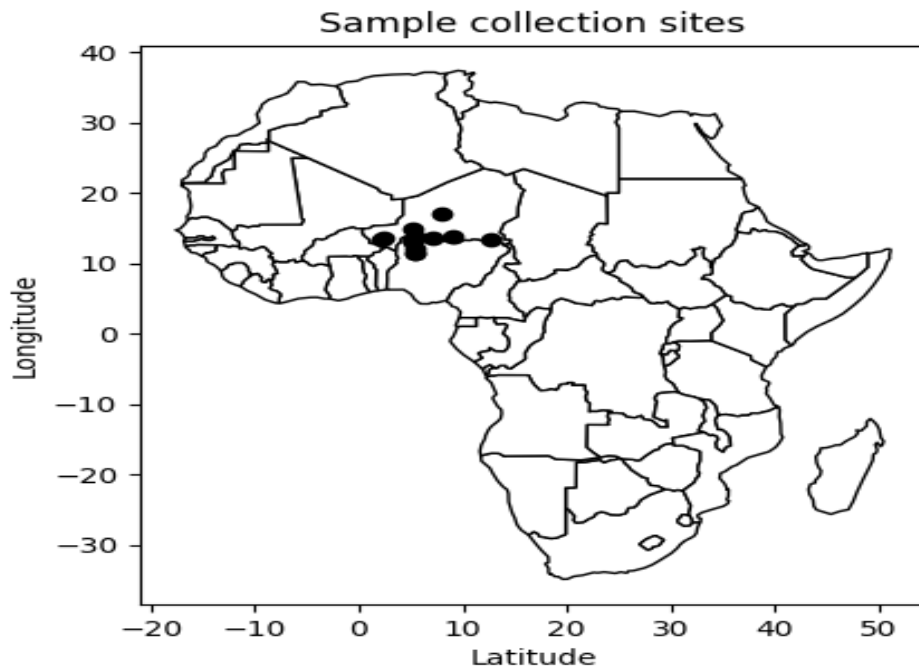
39 The study surveyed fields in the Sahel region, bordering Nigeria and the Niger Republic. These areas were  
 40 purposely and randomly selected due to the semi-arid nature of the locations. The Mobile Topographer application  
 41 was used to obtain the coordinates of both latitude and longitude of each study area (Table 1). A mobile topographer  
 42 application was used to capture the geographical details of each location, and the coordinates of latitude and  
 43 longitude points were recorded. These recorded points were later trained into *GeoPandas* and *Mapplotlib* to capture  
 44 the probable exact locations of points for sample collection on the map as reference points for further research  
 45 (Figure 1).

46  
 47

48 Table 1: Geographic coordinates of the Study Areas

S/No.	Location point	Latitude (°)	Longitude (°)	Altitude (m)	Temperature (°)	Time collected (hours)
1.	Ndounga	13.371	2.252	193.72	39	12.42
2.	Ndounga	13.372	2.253	191.30	42	12.45
3.	Ndounga	13.371	2.251	191.72	43	12.55
4.	Barkiawel	13.544	2.312	218	34	18.00
5.	Barkiawel	13.549	2.313	220.1	33	18.05
6.	Barkiawel	13.545	2.312	219.06	32	18.15
7.	Konni	13.796	5.250	272.94	43	12.55
8.	Konni	13.474	5.159	265.09	43	13.00
9.	Konni	13.79	5.256	262	42	13.05

10.	Dundaye	13.010	5.228	324.0	29	9.00
11.	Dundaye	13.134	5.194	259.31	29	9.05
12.	Dundaye	13.134	5.194	260.76	30	9.30
13.	Makera	13.137	5.189	271.11	30	9.38
14.	Makera	13.137	5.188	267.60	29	9.00
15.	Makera	13.137	5.188	271.16	32	9.30
16.	Gidan doki	13.138	5.191	271.21	29	8.55
17.	Gidan doki	13.138	5.191	272.93	30	9.35
18.	Gidan doki	13.138	5.190	271.18	31	9.45



**Figure 1:** Map of Africa showing sample collection sites across the borders of Nigeria-Niger Republic

## Collection of Soil Samples

Root samples (both rhizosphere and rhizoplane) of sorghum were collected under moist conditions during the rainy seasons and when rainfall began to decline. The soil samples were collected from fourteen (14) locations (Agadez 1 and Agadez 2, Barkiawel, Daki Takwas, Diffa, Dundaye, Makera, Maradi, Ndounga, Nkonni, Ribah, Tahoua, Zinder, and Zodi) within Nigeria and the Niger Republic located in the Sub-Saharan region. A total of 90 samples were collected. Barkiawel, Ndounga, and Nkonni samples were collected from May 24 to May 27, 2021; Gidan Doki, Makera, and Dundaye (July 30 to August 1). While Agadez 1 and Agadez 2 (Adderbissonét), Diffa, Maradi, Tahoua, and Zinder were collected on September 28, 2021, Motsara and Roy's [8] method was adopted. Samples were pooled to prepare the composite soil sample. Next, these composites were air-dried and homogenised by sieving (fine earth, < 2 mm) which were used for comprehensive soil analysis.

## 2.2 Protocol for PLFA Analysis

### 2.2.1 precautionary measures

Quideau et al.'s [7] method is a reliable soil ecological study method, but proper PPE is needed to prevent contamination. Nitrile gloves are recommended, and cleaned glassware should be rinsed with 70% alcohol.

### 2.2.2 Preparation of Glassware for Analysis

69 Disposable glassware, including centrifuge tubes, PTFE-lined caps, and reusable glassware, should be heated in a muffle furnace for 4  
70 and a half hours at 450 °C. PTFE-lined caps should be soaked in phosphate detergent, washed, and dried in an oven at 40 °C.

### 71 72 **2.2.3 Collection and Processing of Soil Samples Prior to PLFA Analysis**

73  
74 Soil samples were collected from 14 locations in Nigeria and the Niger Republic, resulting in 90 samples. After soil physiochemical  
75 analysis, the remaining samples were frozen until ready for freeze drying. The freeze-dried samples were transferred to new-labelled  
76 sterile bags and weighed into a pre-labelled muffled centrifuge tube for PLFA extraction. A general guideline is 0.5 g for organic  
77 materials and up to 3.0 g for mineral soil samples. For every 10 samples, an additional duplicate sample is weighed, and for every 20  
78 samples, a blank is included. Batches of sample tubes are processed simultaneously, with a set of 20 samples corresponding to a batch  
79 of 23 sample tubes. The extraction, separation, and methylation are conducted in batches of samples before preparing them for GC  
80 analysis. This helps identify errors and reduces the number of repeat extractions.

## 81 82 **2.3 PLFA Technique Steps**

83 The PLFA technique was conducted in a fume hood, using appropriate PPE and adhering to lab safety guidelines in each of the three  
84 steps.

### 85 **2.3.1 Extraction (Step 1):**

86 The process involves preparing a solution of KOH and citrate buffer, which are then adjusted to a pH of  $4.00 \pm 0.02$  by adding 5.0 M  
87 KOH. The citrate buffer is diluted to 1,000 ml and stored in the refrigerator. A PC(19:0/19:0) nonadecanoate surrogate standard is  
88 prepared daily by diluting 250 µl of the stock solution in 25 ml chloroform. The Bligh and Dyer extractant is added to the soil sample,  
89 followed by a second round of extractant and centrifugation at 226 x g for 15 minutes. The supernatant is transferred to a labelled 45-  
90 ml glass vial, and the remaining samples are added to the same vials. The samples are then placed under compressed N<sub>2</sub> to avoid  
91 oxidation. Chloroform is evaporated off slowly, setting the N<sub>2</sub> flow to ruffle the liquid but not climb the sides of the vial. The samples  
92 are then stored in the freezer at -20 °C wrapped in aluminium foil until ready to proceed with Step 2.

### 93 **2.3.2 Lipid fractionation (Step 2)**

94 The process involves solid-phase extraction (SPE) using a column holder on a glass tank. New SPE columns are inserted, labelled, and  
95 conditioned by adding acetone and chloroform. The sample is re-dissolved and transferred to the column using a Pasteur pipette.  
96 Neutral lipids and glycolipids are eluted by adding chloroform and acetone, respectively. The solvent is then drained into the tank.  
97 Centrifuge tubes are inserted and labelled, and phospholipids are eluted by adding methanol. SPE columns are dried in a fume hood  
98 before disposal. Phospholipid fractions are dried under compressed N<sub>2</sub> and purged. Samples are stored in the freezer at -20 °C  
99 wrapped in aluminium foil until ready for Step 3. The process ensures accurate and consistent results.

### 100 101 **2.3.3 Lipid methylation (Step 3).**

102 To prepare a sample for GC analysis, start by setting a hot water bath to 37 °C. Prepare 1M acetic acid by dissolving glacial acetic acid  
103 in 1,000 ml dH<sub>2</sub>O, which can be stored at room temperature for up to three months. Prepare a batch of methanolic KOH by dissolving  
104 0.45 g KOH in 40 ml methanol. Adjust the volume of KOH and methanol according to the anticipated batch size. Remove samples  
105 from the freezer and mix them with 0.5 ml chloroform and 0.5 ml methanol, followed by 1.0 ml methanolic KOH. Place sealed  
106 samples in a 37 °C bath for 30 minutes, ensuring the water level is 1-2 mm above the sample liquid. Label small glass vials with  
107 sample IDs, add 2.0 ml hexane, 0.2 ml of 1.0 M acetic acid, and 2.0 ml of dH<sub>2</sub>O. Vortex samples for 30 seconds, centrifuge samples at  
108 226 x g for 2 minutes, and transfer the top phase to clean, labelled vials. Evaporate solvent in a labelled 10-mm glass vial under N<sub>2</sub>  
109 and store samples in the freezer at -20 °C wrapped in aluminium foil until ready for GC analysis.

## 110 **2.4 Gas chromatograph (GC) analysis**

111 The identification and quantification of individual PLFAs can be achieved using a GC connected to an MS detector. The GC internal  
112 standard (ISTD) is prepared by adding MeC10:0 to hexane. The GC is turned on, and the gas supply is ensured. A good calibration is  
113 checked by running calibration standards containing a mix of fatty acids and a hexane blank. The identity of individual fatty acids can

114 be manually assigned based on retention times or automatically assigned using commercial software. A good calibration includes a  
115 flat baseline and no contamination in the hexane rinse. The sample is dissolved in 150 µl of the ISTD solution and transferred into the  
116 GC vial.

## 117 2.5 Representative Results

118 Fatty acids are identified using a X:Y<sub>ω</sub>Z designation, where X represents carbon atoms, Y represents double bonds, and Z indicates  
119 the first double bond position. The suffixes 'c' and 't' indicate geometric isomers, 'a' and 'i' indicate anteiso and iso branching, and Me  
120 and OH specify methyl and hydroxyl groups. After the GC run, samples were checked for adequate ISTD and internal standard  
121 responses. The areas of different peaks can be imported into a spreadsheet for further processing using:

$$122 \text{ PLFA Content (nmol g}^{-1}\text{)} = \frac{F \times \left(\frac{\text{area PLFA}}{\text{area C10:0}}\right) \times \text{C10:0 std added} \times \left(\frac{\text{C19:0 std added}}{\text{C19:0 sample}}\right)}{\text{sample weight}}$$

124 The study uses a GC system to characterize soil PLFAs, adjusting for FID selectivity and molarity differences between fatty acids.  
125 The peak areas for each identified PLFA are expressed as peak areas, response, or %response. The areas can be assumed to be linearly  
126 proportional to the weights of fatty acids or small correction factors can be applied. Results are initially expressed on a weight percent  
127 basis, so they need to be normalized to yield molar amounts. Adjusting for molarity differences is achieved by taking into account  
128 molecular weights of individual fatty acids.

129 The amount of ISTD (nmol) added to each sample can be further calculated as:

$$130 \text{ C10:0std added} = [\text{ISTD}] \times V (\text{STD added})$$

131 where [ISTD] is the concentration (nmol l<sup>-1</sup>) of the MeC10:0 (methyl decanoate) dissolved in hexane (Step 3) and V(STD added) is  
132 the volume (L) of prepared ISTD solution, added to each sample prior to the GC run (i.e., 150 µl according to Step 3).

133 The amount of C19:0 (nmol) present in each sample during GC analysis corresponds to:

$$134 \text{ C19:0 sample} = F \times \left(\frac{\text{area C19:0}}{\text{area C10:0}}\right) \times \text{C10:0 std added}$$

135 where areaC19:0 is the peak area for C19:0, while the corresponding amount of C19:0 (nmol) added to each sample at the beginning  
136 of the PLFA extraction method (cf. Step 3.) is:

$$137 \text{ C19:0 added} = \left(\frac{[19:0]\text{std} \times V(19:0 \text{ std added})}{M_{19:0}}\right) \times 2$$

138 where [19:0]Std (mg l<sup>-1</sup>) is the concentration of the C19:0 nonadecanoate surrogate standard dissolved in chloroform (Step 3), V(19:0  
139 std added) is the volume of prepared surrogate standard added to each sample at the beginning of the PLFA extraction method (cf.  
140 Step 3), and M19:0 is the molecular weight of 1,2-dinonadecanoyl-sn-glycero-3-phosphocholine (PC(19:0/19:0)).

141 NOTE: One mole of C19:0 nonadecanoate surrogate standard yields two moles of C19:0 following the methylation step, while the  
142 C10:0 standard is added after methylation. The following PLFAs are typically excluded from analysis of soil microbial communities:  
143 i) PLFAs that are <14 C and >20 C in length, and ii) PLFAs with less than 0.5% of total in peak area. Once these PLFAs have been  
144 excluded, the responses from all of the remaining PLFAs can be summed to obtain the total PLFA biomass (nmol g<sup>-1</sup> of dry soil).  
145 Univariate analysis of PLFA data

## 148 2.6 Data Analysis

149 The data generated from running the samples in the GC-MS machine were compared to library data and were further analyzed using  
150 Principal Component Analysis (PCA) and a stacked bar charts to represent microbial composition across study areas. Statistical  
151 analysis and correlation matrices were also used to identify relationships between soil properties and PLFA biomarkers.

## 153 3. 0 RESULTS AND DISCUSSION

### 3.1 Physicochemical Analysis of Selected Semi-Arid Soil in Nigeria and Niger Republic

The findings from this study highlight significant spatial variation in soil physicochemical properties across the studied locations, revealing critical insights into soil fertility, nutrient dynamics, and potential agricultural productivity in these regions (Appendix I).

### 3.2 Soil pH, Organic Carbon (SOC), and Organic Matter (SOM)

The highest mean values for soil pH, SOC, and SOM were recorded in Agadez, suggesting that this location may have more favorable conditions for organic matter accumulation and microbial activity. In contrast, Zodi, Daki Takwas, and Makera had the lowest percentages of these parameters, indicating lower soil fertility and possibly reduced organic inputs or higher rates of organic matter decomposition. The distribution of SOC and SOM also highlights the variability in soil management practices and vegetation cover across the regions (Appendix I).

### 3.3 Nitrogen (N) and Phosphorus (P)

The study revealed minimal variation in soil nitrogen across locations, with the highest percentage recorded in Tahoua (0.28%) and the lowest in Diffa and G/Doki (0.028%). This consistency suggests that nitrogen availability is relatively constrained across the region, potentially limiting plant growth. However, soil phosphorus exhibited greater variability, with the highest levels observed in Ndounga (1.17 mg/kg) and the lowest in Agadez (0.485 mg/kg). The disparity in phosphorus levels may reflect differences in soil parent material, fertilizer application, or crop uptake (Appendix I).

### 3.4 Cation Exchange Capacity (CEC) and Soil Nutrients

Nkonni consistently showed the highest mean values for key nutrients, including potassium (K), sodium (Na), and calcium (Ca), as well as the highest cation exchange capacity (16.5 cmol/kg). This suggests that Nkonni soils have a greater ability to retain and exchange essential nutrients, supporting plant growth. In contrast, Makera and G/Doki exhibited the lowest levels of several key nutrients, including magnesium (Mg) and calcium (Ca), and a low CEC, indicating limited nutrient retention capacity and lower soil fertility (Appendix I).

### 3.5 Soil Texture and Moisture

Soil texture varied widely across the study locations. G/Doki had the highest percentage of sand (87.1%), which corresponds to lower water-holding capacity and reduced nutrient retention. On the other hand, Nkonni had the highest clay content (35.0%), which is typically associated with higher water retention and nutrient availability. Locations with higher clay content, such as Nkonni, are likely to support more stable soil ecosystems compared to sandy soils, which are more prone to leaching and erosion. Soil moisture content also varied significantly, with Ribah showing the highest levels (13.25%) and Barkiawel the lowest (0.5%). These variations suggest differences in rainfall, water infiltration, and soil management practices. The standard deviation analysis reveals the variability of soil properties across locations. Low standard deviation values suggest consistency in parameters such as nitrogen, while high standard deviations (e.g., for clay content) indicate significant spatial variability. This variability highlights the heterogeneity of soils within the region, which has implications for land management and agricultural planning (Appendix II).

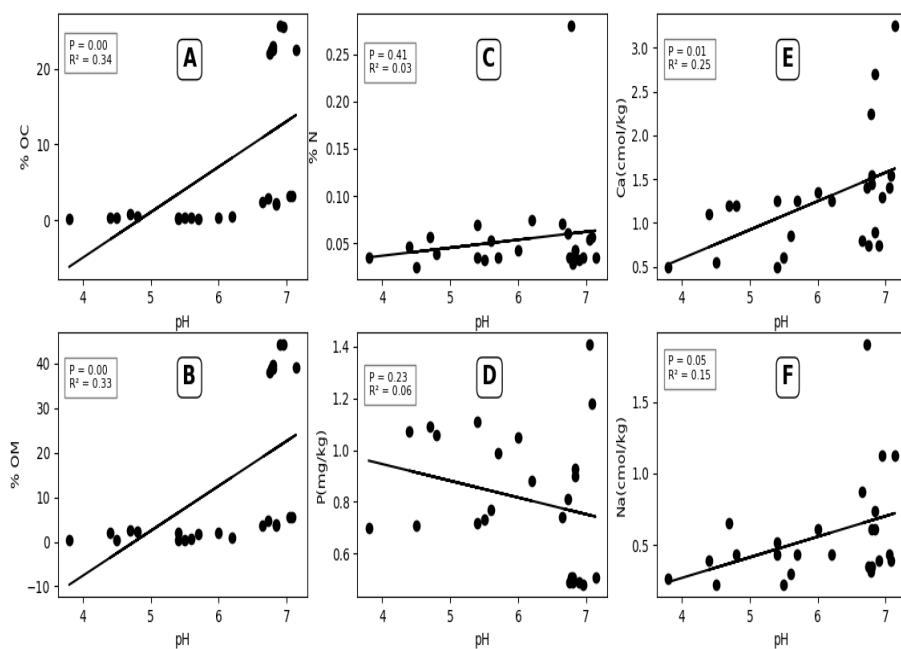
The study highlights the influence of soil physicochemical properties on soil fertility and agricultural potential in these regions. Locations like Nkonni with higher CEC, clay content, and nutrient levels show greater potential for sustained productivity, while areas with low SOM, SOC, and nutrient availability require significant management interventions. The findings provide valuable baseline data for informed agricultural decision-making, particularly in the context of climate variability and sustainable land management practices.

Relationship between soil physicochemical properties and soil pH and its impact on PLFA biomarkers were analysed using scatter plots (A–F) in Figure 2. soil pH may influence certain soil properties (like organic carbon, organic matter, and calcium), but has limited impact on nitrogen and phosphorus. These in turn determine microbial community abundance through PLFA biomarkers as indicators. Therefore, statistically significant trends ( $P < 0.05$ ) were observed for % OC, % OM, and Ca. However, weak or non-significant trends are observed for % N, P, and Na. In a nutshell, The  $R^2$  values across all charts are relatively low, indicating that pH alone is not a strong predictor of the soil properties, but it does play a meaningful role in some cases. While Organic content (OC, OM) and calcium are most strongly influenced by pH and could possibly be determinants of microbial diversity.

199 *The Nature and Properties of Soils* (14th ed.) by [9], highlights how soil pH can influence the availability of certain nutrients,  
200 particularly calcium, magnesium, and other base cations. It highlights that while soil pH affects organic carbon and organic matter  
201 decomposition rates, the availability of nitrogen and phosphorus is more complex and less directly influenced by pH. Nitrogen  
202 availability is more affected by microbial processes, while phosphorus availability is often limited by chemical reactions that form  
203 insoluble compounds at high and low pH. Jenny's classic work [10] on soil formation explains the relationships between soil pH and  
204 organic matter. Higher pH values often coincide with greater base saturation, which supports the accumulation of organic matter and  
205 organic carbon in soils. However, nitrogen availability is more influenced by organic matter content and microbial mineralization, and  
206 phosphorus availability is strongly controlled by reactions with iron and aluminum oxides, which are less directly affected by pH.  
207 Marschner [11] similarly explains that soil pH strongly influences calcium availability, as calcium is more soluble in neutral to slightly  
208 alkaline conditions. It also describes how pH indirectly affects organic matter decomposition rates and organic carbon content.  
209 However, nitrogen availability is controlled largely by microbial processes such as nitrification and ammonification, which are only  
210 indirectly influenced by pH. For phosphorus, pH can influence availability but typically requires very acidic or alkaline conditions to  
211 have a strong effect. In the same vein, study by Zhao *et al.*[12].indicates that soil pH is significantly correlated with organic carbon  
212 and calcium content in various soils, while its impact on nitrogen and phosphorus is minimal or inconsistent. The findings suggest that  
213 pH influences the microbial and chemical processes affecting organic carbon and calcium, but nitrogen and phosphorus availability  
214 depends more on specific microbial and chemical interactions that are less pH-dependent. These sources support the view that soil pH  
215 is closely related to properties such as organic carbon, organic matter, and calcium availability, but has limited influence on nitrogen  
216 and phosphorus due to the unique microbial and chemical processes governing these nutrients.

217

218



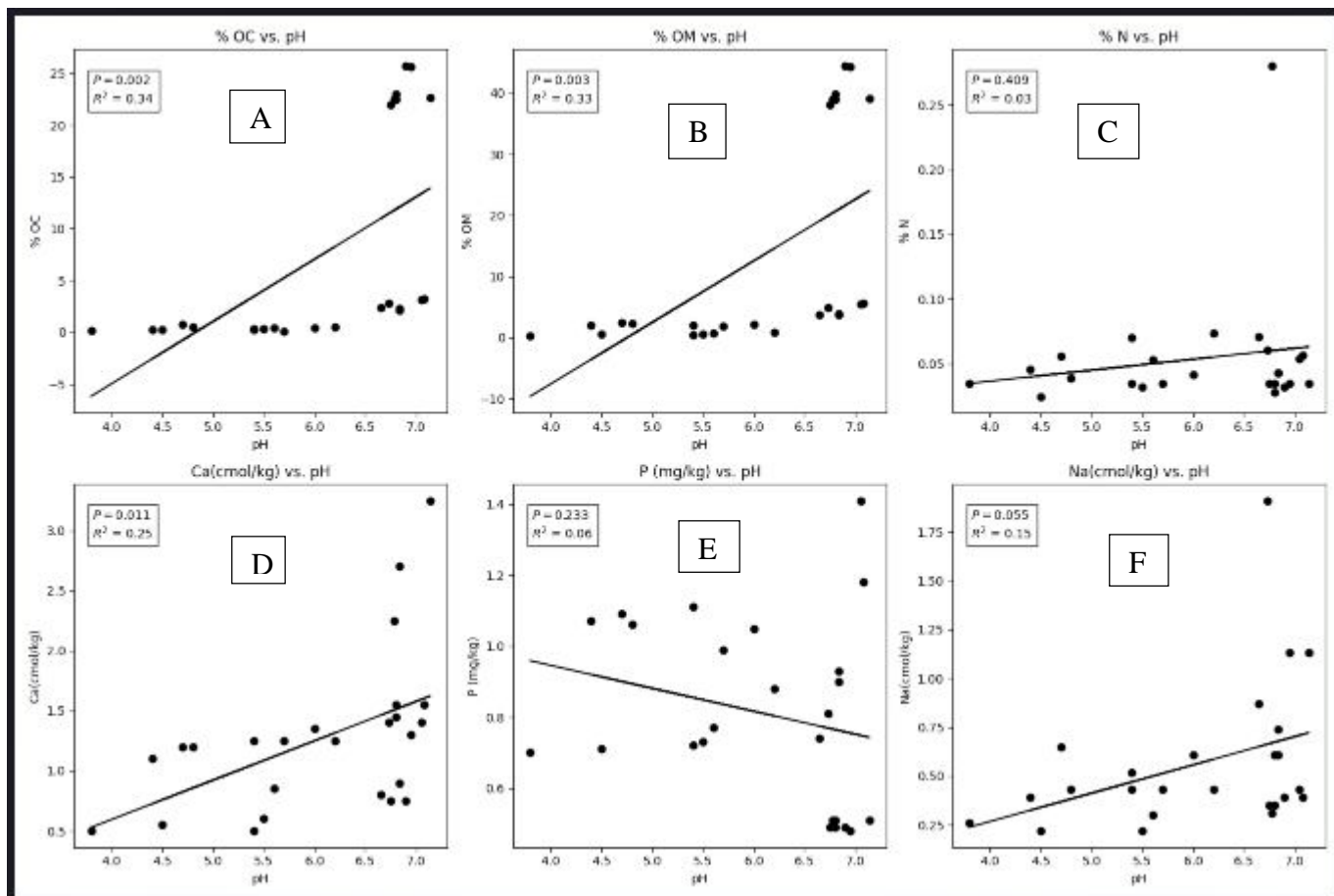
219

220

221

222

223



225

226

**Figure 2:** Correlations between soil pH and other soil physiochemical properties and its impact on PLFA biomarkers

227

228

### Key:

229

- **Plot A (% Organic Carbon, OC vs. pH):** A significant positive correlation is observed ( $P = 0.002$ ,  $R^2 = 0.34$ ). Around 34% of the variation in % OC can be explained by soil pH, indicating that higher soil pH is associated with increased organic carbon levels.
- **Plot B (% Organic Matter OM vs. pH):** Similarly, there is a significant positive correlation ( $P = 0.003$ ,  $R^2 = 0.33$ ). 33% of the variation in % OM, suggesting that organic matter increases with soil pH.
- **Plot C (Nitrogen, N vs. pH):** No significant relationship ( $P = 0.409$ ,  $R^2 = 0.03$ ). Only 3% of the variation is explained by pH, suggesting that nitrogen content is largely unaffected by changes in soil pH.
- **Plot D (Calcium, Ca vs. pH):** A significant positive correlation ( $P = 0.011$ ,  $R^2 = 0.25$ ). 25% of the variation in Ca shows that calcium availability increases with higher soil pH.
- **Plot E (Phosphorus, P vs. pH):** A weak and insignificant correlation. The relationship is not statistically significant. ( $P = 0.233$ ,  $R^2 = 0.06$ ). Only 6% of the variation in P indicates minimal impact of soil pH on phosphorus levels.
- **Plot F (Sodium, Na vs. pH):** A weak positive correlation. The relationship is borderline statistically significant. ( $P = 0.055$ ,  $R^2 = 0.15$ ). 15% of the variation in Na suggests a slight increase in sodium levels with pH.

243

244

245

246  
247  
248  
249  
250  
251  
252  
253  
254  
255  
256  
257  
258

### 3.6 Phospholipid Fatty Acid (PLFA) analysis

A GC-MS machine was used for the detection of PLFAs. Tables 2 and 3 show the locations from which volatile compounds were detected. The retention times and corresponding PLFAs and their peak area (PA). For clarity, not all peaks are presented in the Tables 2 and 3. A total of 110 PLFAs were identified. cyC14:0, cyC16:0, and cyC18:1 was identified from locations like Daki Takwas, Gidan doki, Dundaye, Makera, Agadez, etc., and dihydroxymethyl tetradecane (2OH14:0) was detected from Agadez 1 and 2, Barkiawel, Diffa, Maradi, Tahoua, and Zinder 1 and 2, respectively. Cis and 'trans' differentiate the isomeric configurations of the carbon chain at the double bond (C18:1cis9-oleic acid as observed in Makera and Ndounga). The dominance of PLFA hydroxylation was associated with microbial viability; bacteria rich in C16:0, C18:0, and C16:1u9 favoured higher soil conductivity and nitrate, and other PLFAs contributed more to the organic content. These are samples from Barkiawel, Nkonni, and Tahoua.

259  
260  
261  
262  
263  
264  
265  
266  
267  
268  
269  
270  
271  
272  
273  
274  
275  
276  
277  
278  
279  
280  
281  
282  
283  
284  
285  
286  
287  
288  
289  
290  
291  
292  
293  
294  
295  
296  
297  
298  
299  
300  
301  
302  
303  
304  
305  
306  
307  
308  
309  
310

**Table 2:** Volatile Compounds detected from Methyl nonadecanoic Acid (i.e. extraction reagent) for Phospholipid Fatty Acid extraction from agricultural soils of Niger Republic.

RT	Volatile Compounds	FAN
10.552	l-(+)-Lactic acid, tert-butyldimethylsilyl ether	C17:0
14.546	1,3-Diphenyl-4H-1,2,4-triazoline-5-thione	C14:0
14.546	Carbonic acid, dodecyl vinyl ester	C15:0
14.546	2,6-Dihydroxyacetophenone, 2TMS derivative	C15:0

14.546	7,9-Di-tert-butyl-1-oxaspiro(4,5)deca-6,9-diene-2,8-dione	C17:0
14.546	1,3-Propanediol, docosyl ethyl ether	C17:0
14.546	7,9-Di-tert-butyl-1-oxaspiro(4,5)deca-6,9-diene-2,8-dione	C17:0
14.546	trans-13-Octadecenoic acid, methyl ester	C19:0
14.557	9H-carbazole-3,6-diamine, N3,N3,N6 ,N6-tetramethyl-	C16:0
14.643	Dodecane, 2,6,11-trimethyl-	C15:0
15.85	Fumaric acid, decyl 3-methylbut-3-enyl ester	C19:0
16.262	Tetradecane	C14:0
18.013	Tetradecane, 1-iodo-	C14:0
18.694	2,4-Di-tert-butylphenol	2OH14:0
19.244	Octadecane, 1-iodo	C18:0
19.781	Hexadecane (Benzaldehyde, 4-methoxy-3-(2,6-dimethylphenoxyethyl)-)	C16:0
19.804	Heptadecane	C17:0
20.434	Tetradecanoic acid	C14:0
20.771	Tetradecanoic acid, ethyl ester	C16:0
20.863	Octadecane	C18:0
21.395	Sulfurous acid, butyl tetradecyl ester	C18:0
21.469	Hexadecane, 1-iodo	C16:0
21.875	Nonadecane	C19:0
21.899	cis-Vaccenic acid	C18:1 cis-11
22.082	Hexadecanoic acid, methyl ester	C17:0
22.15	Octadecane	C18:0
22.156	Hexacosane, 1-iodo	C18:0
22.219	7,9-Di-tert-butyl-1-oxaspiro(4,5)deca-6,9-diene-2,8-dione	C17:0
22.219	7,9-Di-tert-butyl-1-oxaspiro(4,5)deca-6,9-diene-2,8-dione	C17:0
22.334	Palmitoleic acid	C16:1n9
22.471	n-Hexadecanoic acid	C16:0
22.482	n-Hexadecanoic acid	C16:0
22.545	1,2-Benzenedicarboxylic acid, butyl 1,2-methylpropyl ester	C16:0
22.545	1,2-Benzenedicarboxylic acid, butyl 1,2-methylpropyl ester	C16:0
22.591	Dibutyl phthalate	C16:0
22.74	Hexadecanoic acid, ethyl ester	C18:0
22.751	Hexadecanoic acid, ethyl ester	C18:0
23.054	Sulfurous acid, cyclohexylmethyl tetradecyl ester	C19:0
23.398	Heptadecanoic acid	C17:0
24.09	Oleic Acid	C18:1n9
24.136	6-Octadecenoic acid	C18:0
24.285	Octadecanoic acid	C18:1cis9
24.33	Sulfurous acid, butyl tetradecyl ester	C18:0
24.359	Octadecanoic acid	C18:0
24.942	Oxalic acid, monomorpholide, undecyl ester	C17:0
25.252	Cyclooctasiloxane, hexadecamethyl	cyC16:0
26.001	Oxalic acid, cyclohexylmethylisohexyl ester	C15:0
26.425	Cyclononasiloxane, octadecamethyl	cyC18:0
26.916	1-benzylindole	C15:0

27.106	Carbonic acid, 2-ethylhexyl nonyl ester			C18:0
27.506	Phenanthro[1,2-b]furan-10,11-dione, 6,7,8,9-tetrahydro-6-(hydroxymethyl)-1,6-dimethyl-, (-)-			C16:0
29.011	Terephthalic acid, di(2-methoxyethyl) ester			2Me14:0
29.515	Oct-3-enoic acid, 2-methyloct-5-yn-4-yl ester			C17:0
34.447	Succinic acid, di(1-cyclopentylethyl) ester			C17:0
35.191	N-Benzyl-N-ethyl-p-isopropylbenzamide	Anthracene,	9,10-dihydro-9,9,10-	C19:0
35.26	trimethyl-			C17:0

Key: RT= Retention Time; FAN= Fatty Acid Notation

311  
312  
313

314

315

316

317

318

319

320

321

322

323

324

325

326

327

328

329

330

331

332

**Table3:** Volatile Compounds detected from Methyl nonadecanoic Acid (i.e. extraction reagent) for Phospholipid Fatty Acid extraction from Nigerian agricultural soils.

RT	Volatile Compounds	FAN
5.74	Methyltris(trimethylsiloxy)silane	C14:0
12.6	3,4-Dihydroxybenzyl alcohol, tris(trimethylsilyl)-	C16:0
14.5	2-Thiopheneacetic acid, 3-tridecyl ester	C14:0

14.5	Octadecane, 1-iodo-	C18:0
14.5	Carbonic acid, 2-ethylhexyl nonyl ester	C19:0
17.42	3-Isopropoxy-1,1,1,7,7,7-hexamethyl-3,5,5-tris(trimethylsiloxy)tetra siloxane	C18:1 <sup>u</sup> 9
17.44	Cycloheptasiloxane, tetradecamethyl	cyC14:0
19.31	Tetradecane, 4-ethyl	C16:0
19.38	Cyclooctasiloxane, hexadecamethyl	cyC16:0
19.39	Cyclooctasiloxane, hexadecamethyl	cyC16:0
19.67	Sulfurous acid, cyclohexylmethyl nonyl ester	C16:0
19.83	2-Bromotetradecane	C14:0
19.83	2-Bromotetradecane	C14:0
20.04	Methyl tetradecanoate	C15:0
20.77	Dodecanoic acid, ethyl ester	C14:0
21.09	Cyclononasiloxane, octadecamethyl	cyC18:1
21.47	Hexadecane, 1-iodo	C16:0
22.08	Pentadecanoic acid, 14-methyl-, methyl ester	C17:0
22.09	Hexadecanoic acid, methyl ester	C17:0
22.09	Heptadecane	C17:0
22.49	1,3-Propanediol, docosyl ethyl ether	C17:0
22.53	1,2-Benzenedicarboxylic acid, butyl 2-methylpropyl ester	C16:0
22.54	Dibutyl phthalate	C16:0
22.74	Hexadecanoic acid, ethyl ester	C18:0
22.75	Hexadecanoic acid, ethyl ester	C18:0
23.01	Oleic Acid	C18:1 <sup>cis</sup> 9
23.15	Isopropyl palmitate	C19:0 <sup>i</sup>
23.96	Methyl stearate	C19:0
24.56	Heptadecanoic acid, 15-methyl-, ethyl ester	C17:0
25.25	Hexadecane, 1-iodo-	C16:0
27.09	Carbonic acid, 2-ethylhexyl nonyl ester	C18:0
27.1	Carbonic acid, decyl 2-ethylhexyl ester	C18:0
27.11	Carbonic acid, 2-ethylhexyl nonyl ester	C18:0
27.66	tert-Hexadecanethiol	C16:0
27.67	Tetrahydrofuran-2-yloxymethylene]-	C19:0
35.00	5-tert-Butyl-2,4-dihydroxybenzophenone, bis(tert-butyl dimethylsilyl) ether	C17:0

Key: RT= Retention Time, FAN = Fatty Acid Notation.

333  
334  
335  
336  
337  
338

339

340  
341  
342  
343  
344  
345

Based on the Table 2 and Table 3, six (6) key volatile compounds that might be associated with the sorghum rhizosphere microbial community are fatty acids and their derivatives. For instance, fatty acids and esters (Methyl tetradecanoate, Pentadecanoic acid methyl ester and Hexadecanoic acid methyl ester,) i.e. Myristic acid, Pentadecylic acid and Palmitic acid respectively, denoted by C:14, C15:0 and C16:0 are common bio-markers of microbial communities, particularly bacteria in the rhizosphere. These fatty acids play a key role in microbial cell structure in the rhizosphere. This conforms to studies by Zelles [13] that fatty acids such as C16:0 and C17:0 are biomarkers for microbial communities in soil environments. While such as n-Hexadecanoic acid (C16:0) are commonly found in

346 microbial membranes and can indicate microbial activity around plant roots. Octadecanoic acid (C18:0) and Oleic acid (C18:1 $\omega$ 9) are  
347 ~~then~~ often associated with soil bacteria and fungi, indicating general microbial presence and activity. While Palmitoleic acid  
348 (C16:1 $\omega$ 9) however is typically associated with gram-negative bacteria, which are common in nutrient-rich rhizosphere  
349 environments. Frostegård *et al.* [14] supports these findings stating that these fatty acids are commonly found in microbial cell  
350 membranes and serve as biomarkers for soil microbial communities and are often reported in plant rhizospheres, reflecting microbial  
351 diversity and function.

352 The second group of volatiles from the table are the organic acids and esters like the L-(+)-Lactic acid, tert-butyl dimethylsilyl ether  
353 (suggestive of fermentation and microbial metabolism, possibly linked to lactic acid bacteria stimulated by root exudates. Fumaric  
354 acid, decyl 3-methylbut-3-enyl ester were similarly detected which could indicate microbial fermentation processes and interactions  
355 with root exudates. Shi *et al.* [15], paper highlights the role of organic acids, like lactic acid, in shaping the bacterial community  
356 structure in plant rhizospheres which is in line with the present study.

357 The third group of volatiles from the table are the Hydrocarbons and Alkanes such as Tetradecane (C14:0) and Hexadecane (C16:0)  
358 (commonly produced by soil microbes and can serve as energy reserves, often found in the rhizosphere. While Octadecane (C18:0) is  
359 a hydrocarbon indicative of microbial activity and adaptation in the soil environment such as stress tolerance. These hydrocarbons are  
360 associated with soil microbial communities, which produce them as secondary metabolites. Their presence in rhizospheres has been  
361 linked to microbial adaptation to the nutrient-rich environment provided by root exudates. These findings were supported by [16] in a  
362 paper on hydrocarbons reporting hydrocarbons like octadecane, tetradecane, and hexadecane are secondary metabolites produced by  
363 soil bacteria and fungi and how these compounds are often detected in the rhizosphere and can contribute to the soil's organic matter  
364 and their role in microbial metabolic processes. Adding to that, Saini and Kookana, [17] reports describes how hydrocarbons like  
365 tetradecane and hexadecane are found in plant rhizospheres and contribute to microbial metabolic processes. Moreover, Brominated  
366 alkanes such as 2-bromotetradecane can be produced by soil microbes or as degradation products of organic material. They are known  
367 to have antimicrobial properties, which can impact the microbial community structure in the rhizosphere. This conforms to the reports  
368 by Bernards and Lewis [18] that brominated alkanes in soil play important ecological roles in soils and influence microbial  
369 communities.

370 The fourth group are basically derivatives such as Phthalates and Aromatic Compounds like Dibutyl phthalate and 1,2-  
371 Benzenedicarboxylic acid derivatives. Though sometimes these derivatives are considered contaminants, these can also arise from  
372 microbial breakdown of complex organic compounds in the soil. Similarly, 2,4-Di-tert-butylphenol is known for its antimicrobial  
373 properties, which may play a role in microbial competition within the rhizosphere. Wu *et al.* [19] study discusses microbial  
374 degradation of phthalates, including dibutyl phthalate, in soil environments, adding that phthalates are sometimes reported as  
375 environmental contaminants; however, they can also be breakdown products of complex organic compounds in the rhizosphere.  
376 Similarly, certain soil bacteria are capable of degrading phthalates, making them a common feature in rhizosphere soil [20]. Schulz-  
377 Bohm *et al.* [21] review covers various antimicrobial compounds produced in the rhizosphere, including phenolic compounds, which  
378 influence microbial interactions and plant health reporting that 2,4-Di-tert-butylphenol as a compound known for its antimicrobial  
379 properties and has been observed in microbial communities that interact with plant roots. It can play a role in microbial competition  
380 within the rhizosphere.

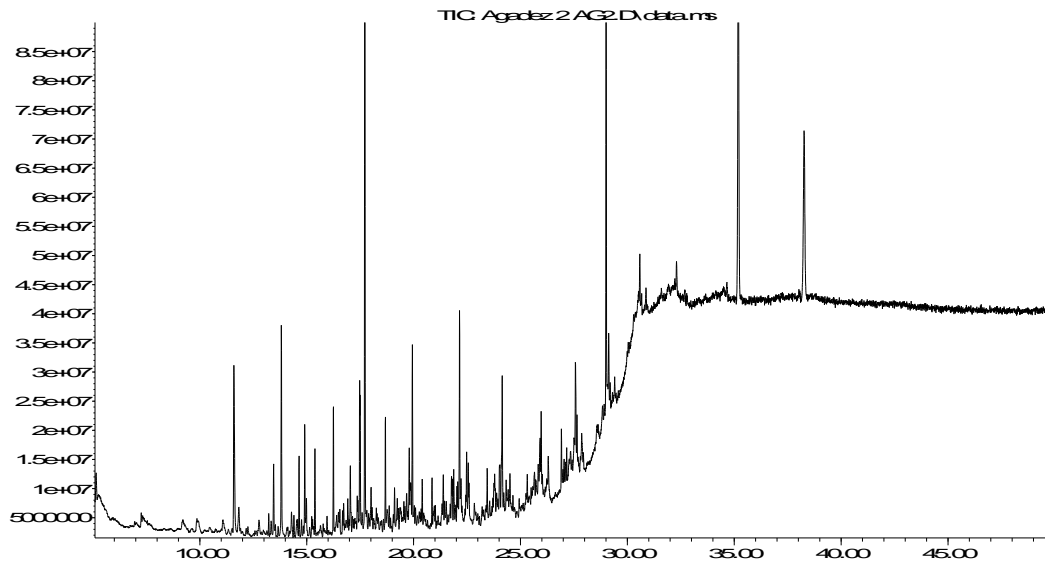
381 The fifth group are the Sulfur-containing esters such as Sulfurous acid, butyl tetradecyl ester (possibly linked to sulfur cycling  
382 microbes), which are important for nutrient availability in the rhizosphere. According to the findings of Friesen *et al.* [15], sulfur-  
383 containing compounds are linked to sulfur-cycling microbes, which are important for nutrient availability in the rhizosphere, adding  
384 that sulfur metabolism is a significant process in plant-microbe interactions including their impact on plant health. Sulfurous acid  
385 derivatives in the soil according to a report by Marschner and Rengel, [16], are associated with sulfur-cycling microbes, which  
386 contribute to nutrient availability for plants and are also known to influence microbial activity in the rhizosphere. Similarly, Niger  
387 agricultural soils which drought impacted soils harbor other Sulphur containing compounds such as thiols. Mukhopadhyay and  
388 Stäbler [17] work highlights Thiols, like tert-hexadecanethiol, contain sulfur which are involved in microbial sulfur metabolism. They  
389 are often detected in soil and rhizosphere environments, where they play roles in microbial interactions and stress responses.

390 Siloxanes (Methyltris(trimethylsiloxy)silane, Cycloheptasiloxane, Cyclooctasiloxane, Cyclononasiloxane) are the last group of  
391 volatiles detected from Niger agricultural soils. Van-Dongen *et al.*, [18] study highlights the occurrence and potential functions of  
392 siloxanes in soil and plant rhizospheres adding that Siloxanes are organosilicon compounds commonly produced by soil microbes and  
393 can be found in rhizosphere environments. They are often associated with microbial adaptation to different environmental conditions  
394 and may indicate microbial diversity.

395 Therefore, the key volatiles in the sorghum rhizosphere include a mix of fatty acids, organic acids, hydrocarbons, phthalates, and  
396 sulfur-containing compounds. These volatiles suggest active microbial communities involved in nutrient cycling, fermentation, and

397 interactions with sorghum root exudates. This profile reflects a diverse microbial environment that supports soil health and plant  
398 growth in the rhizosphere.  
399  
400  
401  
402  
403  
404  
405  
406  
407  
408  
409  
410  
411  
412  
413  
414  
415  
416  
417  
418  
419  
420  
421  
422  
423  
424  
425  
426  
427  
428  
429  
430  
431  
432  
433  
434  
435  
436  
437  
438  
439  
440

Abundance



Time->  
**Figure 3:** Representative GCMS chromatogram (Agadez 2) showing peak areas of microbial abundance eluted against time

441  
442  
443  
444  
445  
446  
447  
448  
449  
450  
451  
452  
453  
454  
455  
456  
457  
458  
459  
460  
461  
462  
463  
464  
465  
466  
467  
468  
469  
470  
471  
472  
473  
474  
475  
476  
477  
478  
479

480 Retention times and corresponding PLFAs and their peak area (pA) are indicated in Figure 3 for representative peaks. For clarity, not  
481 all peaks are indicated on the figure, although this particular sample yielded 74 identified PLFAs. Figure 3 presents a representative  
482 sample run. The large hexane solvent peak characteristically appears at a retention time (RT) around 26.9 min. The ISTD standard  
483 peak (C10:0) appears at a RT of 5.1 min, while C19:0 has a RT of 19.8 min. The GC analysis separates the PLFAs based on their  
484 chain length, with longer chains eluting more slowly; for instance, C18:0 elutes at 18.2 min while C16:0 elutes at 11.8 min. In  
485 addition, this analytical protocol can separate PLFAs based on their degree of unsaturation and the position of their double bond; for  
486 example, C18:0 elutes at 18.2 min, while C18:1 $\omega$ 9 (Table 2) and cyC18:1 (Table 3) elute at 24.09 min and 21.09 min, respectively.  
487  
488  
489  
490  
491  
492  
493  
494  
495  
496  
497  
498  
499  
500  
501  
502  
503  
504  
505  
506  
507  
508  
509  
510  
511  
512  
513



**Figure 4:** A Stacked barchart showing PLFA profiles across the different soils for Niger.

Key:

Ag1= Agadez 1 Ag2= Agadez 2 BK= Barkiawel DF= Diffa Mr=Maradi

Nd= NdoungaNk= Nkonni Th= Tahoua Zd1=Zinder 1 Zd2= Zinder 2

- C18: 1cis9 (oleic acid) is evidence of naturally occurring fatty acids- the phospholipids that make membranes bacteria/fungal PLFA.
- Cyclo-fatty acid (as in cyC17:0 and cyC19:0) show that G- bacteria are associated with such PLFAs and the content in the membrane of G- bacteria may allow them to withstand certain environmental conditions (drought stress).

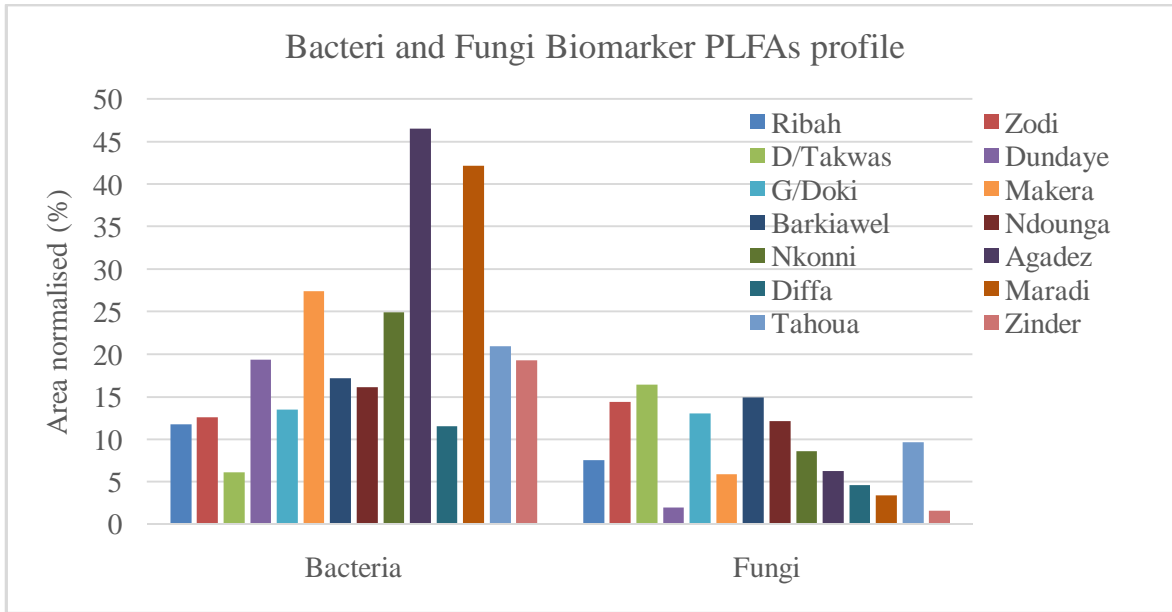


**Figure 5:** Stacked barchart showing PLFA profiles across the different soils for Nigeria.

- 526  
527  
528  
529  
530  
531  
532  
533  
534  
535  
536  
537  
538  
539  
540  
541  
542  
543  
544  
545  
546  
547  
548  
549  
550  
551  
552  
553  
554
- Key:**
- Daki Takwas: The PLFA composition is mainly C18:1u9 (Purple) and C15:0 (Red), with a high diversity of around 10 different PLFAs.
  - Dundaye: Dominated by C18:1u9 (Purple) and C15:0 (Red), with a moderate diversity of around 8 different PLFAs.
  - Gidan Doki: More balanced distribution among various PLFAs, with a notable amount of C18:0 (Dark Blue) and C18:1u9 (Purple), and around 9 different PLFAs.
  - Makera: Highest in diversity with about 11 different PLFAs, and a significant presence of C18:1u9 (Purple) and C16:0 (Green).
  - Ribah: Lower in both total PLFAs and diversity, with prominent C18:1u9 (Purple).
  - Zodi: Characterized by a high presence of C18:1u9 (Purple) and C16:0 (Green), with a moderate diversity of around 6 different PLFAs.

555  
556  
557  
558  
559  
560  
561  
562  
563  
564  
565  
566  
567  
568  
569  
570  
571  
572  
573  
574  
575  
576  
577  
578  
579  
580  
581  
582  
583  
584  
585  
586  
587  
588  
589  
590  
591  
592  
593  
594  
595  
596  
597  
598

Y-Axis (left) in Figure 4 represents the percentage of total phospholipid fatty acids (PLFAs) for each category. While the Y-Axis (right) represents the number of distinct PLFAs in each location. The X-axis lists different locations where soil samples were collected. The locations are Daki Takwas, Dundaye, Gidan Doki, Makera, Ribah, and Zodi. Locations like Makera (Figure 5) have a high diversity of PLFAs, indicating a richer microbial environment. Some locations have specific PLFAs that dominate the profile, such as C18:1u9 in Ribah. The combined bar and line graph provide a comprehensive view of both the composition and diversity of PLFAs across different locations. Therefore, Figure 3 and 4 effectively show both the distribution of specific PLFAs and the diversity of these PLFAs across various locations, providing insights into the microbial composition and potential environmental factors influencing these locations.



**Figure 6:** Bacteria and Fungi PLFA Biomarkers in nmol/g from soil samples across all locations.

Key:

- Dundaye soils have more bacteria PLFA's than fungi Zamfara (D/Tawas) soils harbour more Fungi PLFA'S compared to bacteria.
- Agadez and Maradi samples had the highest abundance of bacteria PLFA's

599  
600  
601  
602  
603  
604  
605  
606  
607  
608  
609  
610  
611  
612  
613  
614  
615  
616  
617  
618

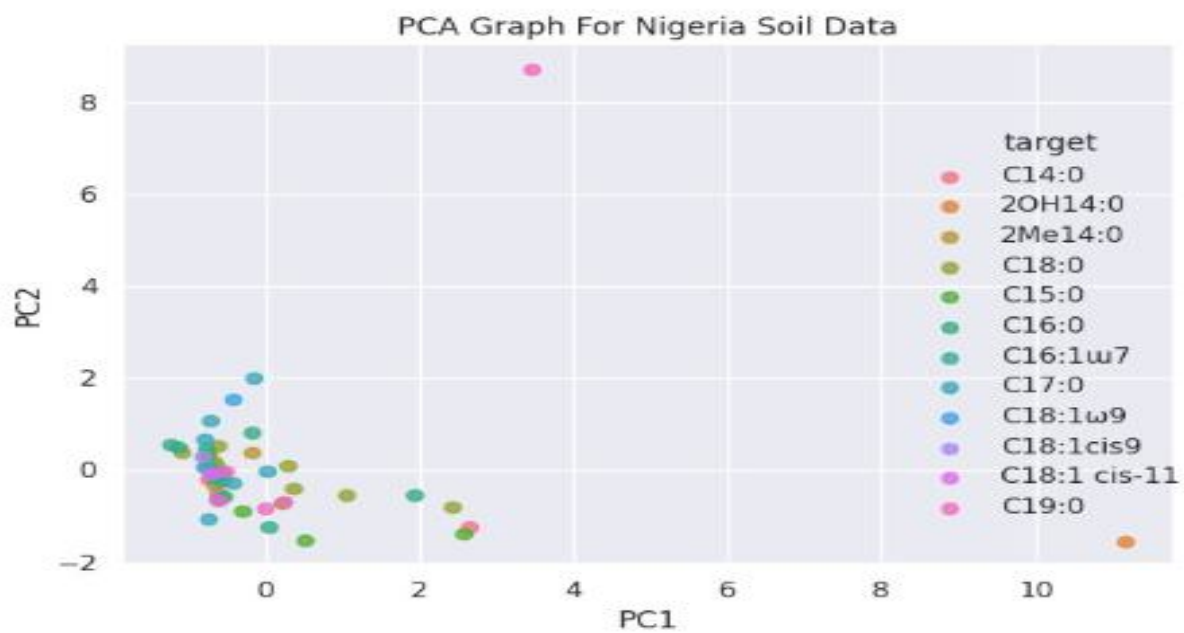


Figure 7: Principal Component Analysis (PCA) for Nigerian Soil PLFAs

619  
620  
621  
622  
623  
624  
625  
626  
627  
628  
629  
630  
631  
632  
633  
634  
635  
636  
637  
638  
639  
640  
641  
642  
643  
644  
645  
646  
647  
648  
649  
650  
651  
652  
653  
654  
655  
656

657  
658 PCA graph was used to represents a Principal Component Analysis (PCA) of soil data collected from Nigeria (Figure 7). The PC2  
659 (Principal Component 2) i.e. the vertical axis (y-axis) was plotted against PC1 (Principal Component 1) - the horizontal axis (x-axis).  
660 The x-axis represents the first principal component. This component captures the maximum variance in the dataset. The vertical axis  
661 (y-axis) - PC2 (Principal Component 2) represents the second highest variance in the dataset, orthogonal to the first component. PC1  
662 explains the largest portion of the variance, while PC2 explains the second largest portion. By plotting PC1 against PC2, we can  
663 capture a significant amount of the data's variability in a two-dimensional plot, where each point on the graph represents a soil sample  
664 from the dataset. Similarly, the coordinates of each point are determined by its values on the first two principal components (PC1 and  
665 PC2). The legend indicates points which are colored based on the "target" variable, which represents different categories of PLFA  
666 biomarkers. For example, C14:0 is represented by pink, 2OH14:0 by orange, 2Me14:0 by green, and so on. Clusters points that are  
667 close to each other indicate that those samples have similar characteristics in terms of the variables used for PCA. The outliers' points  
668 that are far away from others, like the pink point (labeled C14:0) at (approximately) (4, 8), indicate a sample that is significantly  
669 different from the rest in terms of the principal components. Therefore, tight clustering of points in the lower left part of the graph  
670 suggests that many samples share similar properties. Similarly, the separation of points by color indicates how different categories of  
671 soil samples (based on fatty acid composition) relate to each other. The PCA therefore, is important as it reduces the complexity of the  
672 data by transforming it into a set of principal components, which are new variables that represent most of the variability in the data.  
673  
674  
675  
676  
677  
678  
679  
680  
681  
682  
683  
684  
685  
686  
687  
688  
689  
690  
691  
692  
693  
694  
695  
696  
697



**Figure 8:**Principal Component Analysis (PCA) for Niger Soil PLFAs

698  
699  
700  
701  
702  
703  
704  
705  
706  
707  
708  
709  
710  
711  
712  
713  
714  
715  
716  
717  
718  
719  
720  
721  
722  
723  
724  
725  
726  
727  
728  
729  
730  
731  
732  
733  
734  
735

736  
737 PCA plot derived from soil data collected in Niger (Figure 7) similarly indicate the first principal component (PC1), which captures  
738 the largest amount of variance in the dataset on the x-axis independent of the second largest amount of variance on the y-axis which  
739 represents the PC2 (Principal Component 2). Each point in the scatter plot (Figure 8) represents a soil sample from the dataset. The  
740 coordinates of each point are determined by its scores on the first two principal components (PC1 and PC2). For Niger samples, points  
741 are similarly color-coded which represents different categories of PLFA biomarkers. For example, cyC14:0: Pink, C14:0: Orange,  
742 C15:0: Yellow, C16:0: Green, cyC16:0: Cyan, C17:0: Dark Cyan, C18:0: Blue, C18:1u9: Purple, C18:1: Light Blue, C18:1cis9: Light  
743 Purple, C19:0: Pink (Different shade from cyC14:0 for distinction). Cluster points indicate that samples have similar characteristics in  
744 terms of the variables used for PCA. The outliers that are far away from others, such as the orange point at approximately (-3, 4),  
745 indicate a sample that is significantly different from the rest in terms of the principal components. Therefore, clustering of points by  
746 color indicates how different categories of soil samples (based on fatty acid composition) relate to each other. The orange outlier at (-  
747 3, 4) suggests that this particular sample, labeled "C14:0", is quite different from the others in the dataset in terms of the principal  
748 components. The general spread of points indicates the variance captured by the first two principal components, with most points  
749 centered around the origin and a few spread out.

#### 750 751 4. CONCLUSION

752 The presence of volatile compounds in agricultural soils in Niger and Nigeria, particularly in the sorghum rhizosphere, is influenced  
753 by soil properties such as organic carbon, soil pH, and organic matter content. Soil pH is crucial for nutrient availability and microbial  
754 activity, while organic matter is a source of carbon-based volatiles. Balancing pH and organic content is essential for sustaining  
755 productive soils in sorghum cultivation systems. Variations in soil properties across locations necessitate site-specific soil  
756 management strategies. A decrease in Gram-negative bacteria reflects stress from reduced water availability, while an increase in  
757 Gram-positive bacteria indicates resilience mechanisms. The imbalance between Gram-positive and Gram-negative populations and  
758 transition toward fungal dominance (such as C18:1ω9 and C18:1cis9) which can negatively impact soil health, leading to reduced  
759 fertility and altered decomposition rates. Additionally, drought stress promotes PLFA markers associated with microbial stress  
760 tolerance and dormancy (e.g., cy17:0, i17:0, cy19:0), reflecting a microbial strategy to endure harsh conditions. Therefore, Locations  
761 with low SOC, SOM, and nutrients, such as Zodi, Daki Takwas, and Makera, may require targeted organic and inorganic amendments  
762 to enhance soil fertility. High clay content in Nkonni (35.0%) may require improved drainage management to avoid waterlogging,  
763 while sandy soils in G/Doki (87.1%) would benefit from organic amendments to improve water retention and nutrient-holding  
764 capacity.

765  
766  
767  
768  
769  
770  
771  
772  
773 Disclaimer (Artificial intelligence)

774 Option 2:

775 Author(s) hereby declare that generative AI technologies such as Large Language Models, etc. have been used during the writing or  
776 editing of manuscripts. This explanation will include the name, version, model, and source of the generative AI technology and as well  
777 as all input prompts provided to the generative AI technology

778 Details of the AI usage are given below:

1. Author(s) hereby declare that generative AI technologies such as chatgpt -4o was used in interpretation of some charts such as Principal Component Analysis Charts and stacked bar charts. All the experiments for this research were performed on Intel Core i5-8250U CPU @ 1.60GHz × 8 processor with 8GB RAM. Ubuntu 20.04 64bit operating system was also used. The following are the software specifications and libraries used in the research;

1. Python 3.10 – a general purpose programming language usually used in machine learning problems.

2. Pandas – a python package for reading dataset.

3. Geopandas (<https://geopandas.org/en/stable>)

4. Matplotlib

5. Sk-learn – a python package for scientific calculation. It was used in this research for splitting dataset.

6. Pytorch - a python package for neural network.

7. Naive Bayes Classifier from Scratch in Python

## ACKNOWLEDGEMENTS

The authors acknowledge Mal. Alfa of Center for Advanced Science Laboratory, Mal. Dahiru and Malam Sanusi of Molecular Biology and Biochemistry Department for their technical support. We also appreciate the National Research Fund 2020 under the TetFund Grant on Science Technology and Innovation (TETF/ES/DR&D-CE/NRF2020/SETI/22/VOL.1) for funding the project and the support given by West African Science Service Center on Climate Change and Adapted Land Use (WASCAL) for administrative and technical support throughout field survey in the course of the study.

## REFERENCES

[1] Le Houérou, H.N. (1996). Climate change, drought and desertification, *Journal of Arid Environments*, 34 (2): 133-185, ISSN 0140-1963, <https://doi.org/10.1006/jare.1996.0099>.

[2] Jeffrey J. Duda, Anthony J. Krzysik and Jerome E. Freilich (1999). Effects of Drought on Desert Tortoise Movement and Activity. *The Journal of Wildlife Management* 63(4):1181-1192. <https://doi.org/10.2307/3802836>

[3] Talmon, Y., Sternberg, M., & Gruenzweig, J. M. (2011). Impact of rainfall manipulations and biotic controls on soil respiration in Mediterranean and desert ecosystems along an aridity gradient. *Global Change Biology*, 17(2), 1108-1118. <https://doi.org/10.1111/j.1365-2486.2010.02285.x>

[4] Cruz-Paredes, C., Tájmel, D., & Rousk, J. (2023). Variation in temperature dependences across Europe reveals the climate sensitivity of soil microbial decomposers. *Applied and Environmental Microbiology*, 89(5), e02090-22.

[5] Fierer, N., Schimel, J. P., & Holden, P. A. (2003). Influence of drying–rewetting frequency on soil bacterial community structure. *Microbial ecology*, 45, 63-71.

[6] De Vries, F. T., Liiri, M. E., Bjørnlund, L., Bowker, M. A., Christensen, S., Setälä, H. M., & Bardgett, R. D. (2012). Land use alters the resistance and resilience of soil food webs to drought. *Nature climate change*, 2(4), 276-280.

[7] Quideau SA, McIntosh AC, Norris CE, Lloret E, Swallow MJ, Hannam K. Extraction and analysis of microbial phospholipid fatty acids in soils. *JoVE (Journal of Visualized Experiments)*. 2016 Aug 26(114):e54360.

[8] Motsara, M. R., & Roy, R. N. (2008). Guide to laboratory establishment for plant nutrient analysis.

[9] Brady, N.C. and Weil, R.R. (2008) The nature and properties of soil, 14 ed. Prentice-Hall, Upper Saddle River, New Jersey. 1082 p.

[10] Jenny, H. (1941) Factors of Soil Formation A System of Quantitative Pedology. Dover Publications, New York, 281 p.

[11] Marschner, H. (2012) Marschner's Mineral Nutrition of Higher Plants. Vol.89, Academic Press, London, 651 p.

[12] Zhao, Q., Zeng, D. H., & Fan, Z. P. (2010). Effects of vegetation and soil properties on soil pH buffering capacity in semiarid ecosystems of northeast China. *Environmental Earth Sciences*, 60(8), 1483–1490.

- 828 [13] Zelles, L. (1999). Fatty acid patterns of phospholipids and lipopolysaccharides in the characterisation of microbial communities  
829 in soil. *Biology and Fertility of Soils*, 29(2), 111-129
- 830 [14] Frostegård, Å., Tunlid, A., & Bååth, E. (2011). Use and misuse of PLFA measurements in soils. *Soil Biology and Biochemistry*,  
831 43(8), 1621-1625.
- 832 [15] Shi, S., Richardson, A. E., O'Callaghan, M., DeAngelis, K. M., Jones, E. E., Stewart, A., ... & Firestone, M. K. (2011). Effects of  
833 selected root exudate components on soil bacterial communities. *FEMS Microbiology Ecology*, 77(3), 600-610.
- 834 [16] Li, W., Ji, X., Zhang, W., Wang, F., & Liu, J. (2014). Hydrocarbon-degrading microbial communities in soil. *Frontiers in*  
835 *Microbiology*, 5, 59. This paper discusses hydrocarbons in the rhizosphere and their role in microbial metabolic processes.
- 836 [17] Saini, R., & Kookana, R. S. (2021). Microbial degradation and metabolization of hydrocarbons in the rhizosphere.  
837 *Microorganisms*, 9(4), 758.
- 838 [18] Bernards, M. A., & Lewis, N. G. (1992). Brominated alkanes in plant and soil systems: Ecological relevance. *Annual Review of*  
839 *Ecology, Evolution, and Systematics*, 23, 75-98.
- 840 [19] Wu, Y., Gu, X., Zhang, Y., Yu, X., & Xie, H. (2015). Biodegradation of dibutyl phthalate by a novel bacterium *Acinetobacter* sp.  
841 strain LMB-5 isolated from activated sludge. *PLOS One*, 10(12), e0144383
- 842 [20] Fu, Q., & Wang, Z. (2015). Microbial degradation of phthalate esters in the soil environment: A review. *Environmental Science*  
843 *and Pollution Research*, 22(4), 2465-2478. This review covers microbial degradation of phthalates and their presence in soil microbial  
844 communities.
- 845 [21] Schulz-Bohm, K., Geisen, S., & Wubs, E. R. J. (2018). The microbiome of root exudates: Mechanisms, complexity, and  
846 ecological functions. *Frontiers in Microbiology*, 9, 108.
- 847 [22] Friesen, M. L., Porter, S. S., Stark, S. C., von Wettberg, E. J., Sachs, J. L., & Martinez-Romero, E. (2011). Microbially mediated  
848 plant functional traits. *Annual Review of Ecology, Evolution, and Systematics*, 42, 23-46.
- 849 [23] Marschner, P., & Rengel, Z. (2012). Nutrient Cycling in Terrestrial Ecosystems. *Soil Biology*, 28, 1-15. This reference covers the  
850 role of sulfur compounds in nutrient cycling and their impact on rhizosphere microbial communities.
- 851 [24] Mukhopadhyay, B., & Stäbler, L. (2019). Microbial transformation of sulfur compounds in soil: Insights from molecular studies.  
852 *Current Opinion in Environmental Biotechnology*, 9, 22-27. This study discusses sulfur compounds in soil, including thiols, and their  
853 role in microbial ecology.
- 854 [25] Van Dongen, J. T., Schurr, U., & Rascher, U. (2013). Siloxanes in soil organic matter: Effects of roots and soil microbes on  
855 silicon-based compounds. *Plant and Soil*, 365(1), 1-12.

## 863 APENDICES

### 865 Appendix I: Standard Deviation and Data Distribution of Soil Nutrients Levels obtained from all Locations.

Location	Ph	% OC	% OM	% N	P (mg/k)	Ca (cmol/kg)	Mg (cmol/kg)	K (cmol/k)
Agadez	6.93 ±0.04	25.65±0.07	44.35±0.13	0.03 ±0.00	0.49±0.01	1.03 ±0.39	2.95±0.35	0.19
Barkiawel	6.87±0.30	2.84±0.60	4.67±1.37	0.06±0.01	0.96±0.31	1.18±0.53	0.93±0.32	0.45
D/Takwas	5.85±0.21	0.25±0.18	1.98±0.18	0.04±0.01	1.02±0.04	1.30±0.07	1.25±0.07	0.18
Diffa	6.80±0.00	22.5±0.00	38.9±0.00	0.03±0.00	0.51±0.00	1.45±0.00	3.00±0.00	0.15
Dundaye	5.90±0.42	0.43±0.07	0.75±0.12	0.06±0.02	0.83±0.08	1.05±0.28	0.63±0.32	0.53
G/Doki	5.00±0.71	0.30±0.03	0.52±0.05	0.03±0.01	0.72±0.01	0.58±0.04	0.70±0.07	0.21

Makera	4.60±1.13	0.21±0.04	0.36±0.07	0.04±0.00	0.71±0.01	0.50±0.00	0.70±0.07	0.27
Maradi	6.75± 0.00	22.0±0.00	38.04±0.0	0.04±0.00	0.49±0.00	0.75±0.00	2.40±0.00	0.1
Ndounga	6.95±0.15	2.71±0.63	4.68±1.09	0.05±0.01	1.17±0.34	1.15±0.35	0.78±0.18	0.44
Nkonni	6.79±0.08	2.48±0.48	4.29±0.83	0.05±0.01	0.86±0.06	2.05±0.92	2.35±0.57	0.78
Ribah	4.75±0.07	0.63±0.18	2.36±0.18	0.05±0.01	1.08±0.02	1.20±0.00	1.30±0.14	0.31
Tahoua	6.78±0.00	22.5±0.00	38.9±0.00	0.28±0.00	0.51±0.00	2.25±0.00	3.10±0.00	0.18
Zinder	6.97±0.24	22.8±0.28	39.43±0.49	0.04±0.00	0.50±0.01	2.40±1.20	2.95±1.06	0.35
Zodi	4.90±0.71	0.3±0.028	2.03±0.03	0.06±0.02	1.09±0.03	1.18±0.11	1.58±0.04	0.36

867  
868  
869  
870  
871  
872  
873  
874  
875  
876  
877  
878  
879  
880  
881  
882  
883  
884  
885  
886  
887  
888  
889  
890  
891  
892  
893  
894  
895  
896  
897  
898  
899  
900

**Key:**

- Standard deviation analysis reveals soil properties' variability across locations, with low values indicating consistency (e.g. in nitrogen).
- High standard deviation values indicate significant spatial variability.

**Appendix II: Standard Deviation and Data Distribution of Soil Physiochemical Properties obtained from all Locations**

Location	Na (cmol/kg)	CEC (cmol/kg)	% Sand	% Silt	% Clay	% Moisture	
Agadez	0.76±0.52	8.70±3.54	76.50±2.12	19.50±2.12	4.00±0.00	2.25	±0.35
Barkiawel	0.63±0.34	3.10±0.42	59.50±8.49	25.5±1.41	15.0±7.07	0.50	±0.00
D/Takwas	0.52±0.13	9.50±0.42	72.35±1.34	17.45±1.34	10.20±0.0	4.50	±1.41
Diffa	0.35±0.00	6.60±0.00	71.00±0.00	22.0±0.00	7.00±0.0	2.50	±0.00
Dundaye	0.37±0.09	10.5±1.84	80.20±4.10	10.6±2.69	9.20±1.41	4.00	±0.72
G/Doki	0.22±0.00	6.70±0.42	87.10±0.00	4.70 ±0.00	8.20±0.00	2.50	±0.71

Makera	0.35±0.12	7.70±0.71	85.10±2.83	6.70 ±2.83	8.20±0.0	1.50	±0.00
Maradi	0.35±0.00	6.20±0.00	71.00±0.00	19.00±0.00	10.0±0.00	4.50	±0.00
Ndounga	0.52±0.13	3.00±0.57	61.55±9.97	21.9±19.16	16.5±9.19	1.25	±1.06
Nkonni	1.33±0.83	16.5±2.12	43.7±21.43	21.4±13.93	35±35.36	1.25	±1.06
Ribah	0.54±0.16	9.80±0.57	63.50±0.00	22.40±0.00	14.1±0.00	13.3	±0.35
Tahoua	0.31±0.00	9.80±0.00	75.00±0.00	21.00±0.00	4.00±0.00	2.4	±0.00
Zinder	0.87±0.37	7.00±1.41	78.00±0.00	18.00±0.00	4.00±0.00	7.3	±6.72
Zodi	0.46±0.09	11.1±2.12	65.5±2.828	24.3±2.828	10.20±0.00	7.0	±2.83

**Key:**

- Standard deviation analysis reveals soil properties' variability across locations, with low values indicating consistency.
- High standard deviation values indicate significant spatial variability.

901  
902  
903  
904  
905  
906  
907  
908  
909