

Original Research Article

COMPATIBILITY OF ENDOPHYTIC *Colletotrichum nigrum* WITH VELUM[®] (SYNTHETIC NEMATICIDE) AGAINST ROOT-KNOT NEMATODES ON TREE TOMATO

ABSTRACT

Root-knot nematodes (RKNs) hinder agricultural production worldwide. Despite many methods of control, management of RKNs involving combined application of endophytic fungi and Velum[®] is sought to leverage on their synergistic antagonism. This study was carried out between September 2022 to February 2023 to evaluate compatibility of endophytic *Colletotrichum nigrum* isolated from roots of tree tomato and commercial *Trichoderma asperellum* with Velum[®] to contain RKNs *in vitro* and in the greenhouse on tree tomato. Leading discs from the colony of *C. nigrum* and *T. asperellum* were removed and inoculated onto PDA amended with Velum[®] and incubated for seven days at 25°C. Un-amended media served as control. Forty milliliters of 1×10^6 spores/ml of *C. nigrum* and *T. asperellum* alone and in combinations with Velum[®] (1ml/L) were tested for their efficacy against second stage juveniles (J2s) of RKN in the greenhouse. *In vitro* and greenhouse tests were replicated four times in Completely Randomized Design. The positive control was inoculated with J2s only while the negative control had no J2s and no treatments. Data was analyzed by Anova SAS, 9.2 and means separated by Tukey's Honestly Significant Differences test at $P \leq 0.05$. There was no significant inhibition in the colony growth of *C. nigrum* and *T. asperellum* by Velum[®] *in vitro* and therefore were found to be compatible. *Colletotrichum nigrum* combined with Velum[®] significantly ($P \leq 0.05$) reduced the RKN J2s, nematode reproduction factor, galling and egg mass indices in both experiments more than when applied alone. There was also a significant increase in the plant growth parameters of tree tomato treated with *C. nigrum* combined with Velum[®]. This study has shown that combining *C. nigrum* and *T. asperellum* with Velum[®] successfully controlled RKNs on tree tomato. These findings could be used to promote integrated nematode management using less toxic nematicides and biocontrol agents.

Key words: Root-knot nematodes; second stage juveniles (J2s), *Colletotrichum nigrum*; Velum[®]; *Trichoderma asperellum*, Endophytic fungi

1. INTRODUCTION

Tree tomato belongs to family solanaceae, a perennial crop that is grown in tropical and subtropical climatic conditions (Ramírez-Gil, 2017). In Kenya, it is an economically important horticultural crop that contributes to rural income generation (Muriithi *et al.*, 2013) and has high nutritional value (AFA, 2021) as well as contributing over 8 million USD annually. The fruits are oval with thick, smooth and shiny covering. When ripe, the fruits are consumed raw or turned into juice. Iron, phosphorus, potassium, calcium, antioxidants, and vitamins A, B, C, and E are abundant in the fruits (Pedrosa, 2016). These nutritional benefits make it to be popularly cultivated around the world.

However, the roots of this crop are seriously attacked by root-knot nematodes (RKNs) causing losses and lowering the yields (Waswa *et al.*, 2020). Root-knot nematodes are a major

threat to horticultural crops across the world (Sikora and Fernandez, 2005). The RKNs cause serious damage to roots and severely reduce yields of many crops such as tree tomatoes, tomatoes, bananas (Jones *et al.*, 2013). Root-knot nematodes are widely distributed in most agricultural soils attacking over 3000 plants globally and causing more than 100 USD billion losses each year threatening development of sustainable agriculture (Abad *et al.*, 2003, Huang *et al.*, 2006; Jones *et al.*, 2013). Infestation with root-knot nematode leads to stunted growth, chlorosis and root shortening. They also cause root galls which interfere with the plants' ability to absorb water and mineral nutrients. The RKNs also cause above-ground symptoms that are usually confused with mineral deficiencies and other diseases (Dahlin *et al.*, 2019).

Managing RKNs is difficult because of their high rate of multiplication and short life cycle (Trudgil and Blok, 2001). Several methods have been used to control RKNs. Previously; RKNs have been controlled significantly by broad spectrum chemicals that are harmful to users and the environment. Therefore, alternative methods of management are required to reduce the usage of harmful chemicals (Huang *et al.*, 2018). With the increasing demand to meet the challenges of food and nutritional security, management of RKNs is no longer a single approach but integrative strategies (D'errico *et al.*, 2019). Going forward, the control of RKNs should not only focus on sustainable methods of management but also by wise use of chemical nematicides for holistic management (Chen *et al.*, 2020; Orlando *et al.*, 2020). Potential biocontrol agents like endophytic fungi that are antagonistic to RKNs are important. Endophytic fungi have shown efficacy against nematodes through production of toxic secondary metabolites, sticky hyphae and colonization of nematode eggs and bodies (Li *et al.*, 2015). Endophytic fungi present a significant strategy of managing RKNs in promoting sustainable agriculture. There has been no single method that has been able to eradicate RKNs and BCAS e.g. *Penicillium lilacinum* have shown inconsistencies in their performance against RKNs in the greenhouse and in the field (Gine and Sorribas, 2017). Their potential in the management of RKNs can be improved by combining with nematicides which have low toxicity profiles such as Velum[®] (active ingredient = fluopyram) to leverage on their synergistic effects. Application of endophytic fungi in combination with new chemical nematicides could be a more attractive approach than applying each one of them alone or singly (Dahlin *et al.*, 2019). Velum[®] has been effectively used against RKNs ((Singh *et al.*, 2017; Dahlin *et al.*, 2019). In consideration, non-chemical management of RKNs is a cost effective method. However, they are sometimes less effective than chemical nematicides. Thus, use of non-chemical approaches in combination with compatible chemicals could be used in comprehensive management of RKNs (Chen *et al.*, 2020). However, there has been no documentation on the efficacy of combining endophytic *Colletotrichum nigrum* from roots of tree tomato with Velum[®] against RKNs. Thus, using new chemicals that have low toxicities such as Velum[®] in combination with endophytic fungi is currently preferred (Chen *et al.*, 2020; Dahlin *et al.*, 2019). Therefore, combining such chemicals with endophytic *C. nigrum* to manage RKNs might be a better strategy than applying each of them individually. There has also been no study documenting the effects Velum[®] has on endophytic *C. nigrum* performance against RKNs on tree tomato and hence the importance of this study.

The main objective of this study was to evaluate the compatibility of endophytic *Colletotrichum nigrum* with chemical nematicide, Velum[®] to demonstrate their synergistic effect in the management of RKNs *in vitro* and in the greenhouse.

2. METHOLODOLGY

2.1 Sampling

Tree tomato (*Solanum betaceum*Cav.) root samples were collected from thirty farms randomly selected using purposive sampling technique. Ten fresh healthy roots were collected from each farm in Kinangop sub-county (-.5546 ° S, 36.5536 ° E) located in Nyandarua County lying at 0.1804°S and 36.5230°E in Kenya. The roots were put into zip lock bags and transported to Kenyatta university agriculture laboratory for processing. The *in vitro* and greenhouse experiments were carried out at Kenyatta University main campus (1.1805° S and 369348° E).

2.2 Isolation of endophytic fungi from tree tomato roots

Sterilization of roots was done according to Dababat *et al.* (2008) protocol. The roots were cut into 5 cm length, thoroughly washed with tap water and sterilized with 70 % ethanol for 3 minutes to remove surface epiphytes. The roots were then sterilized in 1.5 % NaOCl for three minutes. Sterilized roots were rinsed three times with sterile distilled water; blot dried using sterile blotting papers and cut into 0.5 cm length using sterile scalpel blades (Dababat *et al.*, 2008). The 0.5 cm root pieces were evenly placed on sterilized potato dextrose agar (PDA) media amended with 150 mg/l each of streptomycin-sulphate to inhibit bacteria contamination. The PDA plates were sealed with parafilm and incubated at 25 °C until endophytic fungi emerged. To evaluate the integrity of sterilization, water from the last rinse was plated onto a fresh PDA media and incubated at 25 °C for seven days. To obtain pure cultures, fungal cultures of the isolate were sub-cultured on a fresh PDA media using discs from the leading mycelia margins taken by flame sterilized 5 mm cork borer and incubated for two weeks.

The endophytic fungus was identified morphologically using macroscopic characteristics of the colonies (colour, margin, texture, density and margin- Plate 1: A, B) and microscopic features of conidia and mycelia under the microscope stained by Lactophenol cotton blue (Plate 1: C).

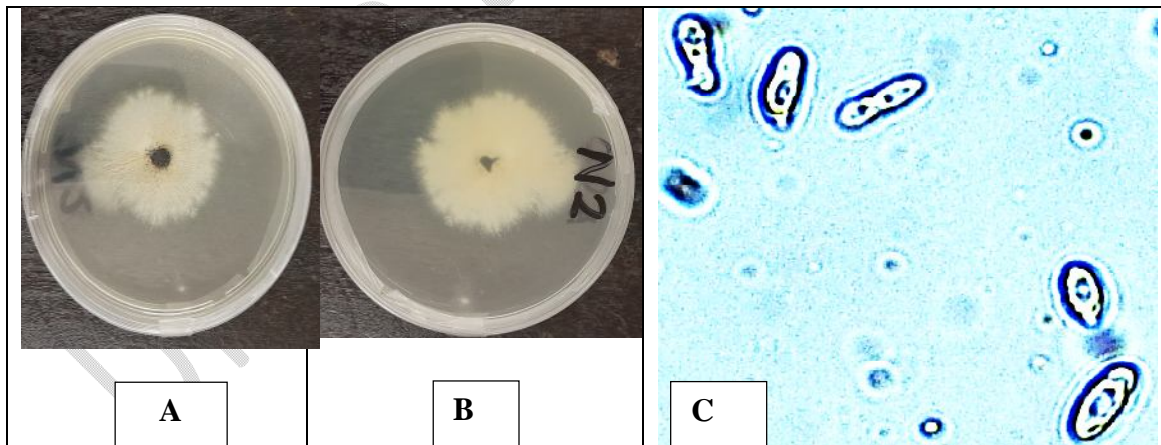


Plate 1: A:*C. nigrum* colony Reverse, B: *C. nigrum* colony Front and C:*C. nigrum* conidia($\times 1000$)

2.3 *in vitro* experiment

Onemilliliter of Velum[®] suspension was dispensed into a 1 L conical flask containing 1L sterilized molten PDA media and gently agitated for even mixing. The media was amended with

150 mg/l each of streptomycin-sulphate. The mixture was then poured into 90 mm petri dishes and allowed to cool and solidify. The discs from actively growing margin of the colony of endophytic *Colletotrichum nigrum* or *Trichoderma asperellum* were removed using a sterile 5 mm cork borer and inoculated onto PDA media amended with Velum[®]. Control plates contained un-amended sterile PDA media. The PDA plates were sealed with parafilm and incubated for seven days at 25 degrees Celsius. The treatments were replicated four times each and arranged in CRD. The treatments included:

- i) Plates amended with Velum[®] + endophytic *Colletotrichum nigrum*
- ii) Plates amended with Velum[®] + Commercial *Trichoderma asperellum*
- iii) Un-amended Plates treated with *C. nigrum*
- iv) Un-amended Plates treated with *T. asperellum*

The colony diameter from radial growth was measured from the underside of each petri dish. The percentage inhibition of growth over the control was calculated using the formula:

$$I = \frac{C - T}{C} \times 100 \text{ (Behdani et al., 2012)}$$

Where **I** = percent inhibition, **C** = colony diameter in control plate, and **T** = colony diameter in treated plate. The experiment was repeated once for accuracy.

2.4 Greenhouse experiment

2.4.1 Mass multiplication of endophytic fungi

The spores of the fungi were mass-multiplied using sorghum grains following the procedures of Cumagun and Moosavi. (2015). The grains were soaked in water, sterilized in an autoclave and inoculated with four 5 mm discs of 5 day old cultures per 200g and incubated in black polythene bags for 14 days. The grains were dried, blended into powder and passed through 50µm sieve. The spore powder was then mixed thoroughly with sterile talc powder (carrier material) in 1:2 ratio and Carboxymethyl cellulose (sticking agent) at 5 g/kg of the product (Sing et al., 2016). Accurate spore density (1×10^6 spores/ml) of the fungi was determined by a hemocytometer.

2.4.2 Preparation of nematode inoculum

Root-knot nematode J2s were reared on a susceptible tomato variety (Cal-J) for three months in the Agriculture greenhouse at Kenyatta University. Galled roots were used to obtain nematode inoculum. An egg mass from a single female was picked using a needle to establish pure cultures for the experiments. The RKN egg mass was put in the sterile 2 sand: 1 soil mixture in pots (12 cm diameter) at the root zone of four week old transplanted susceptible tomato plants of cultivar Cal- J. and maintained in the greenhouse. After three months, plants were uprooted, galled roots were washed, chopped into 1cm, macerated in 1.5 % NaOCl solution in a blender and the suspension passed through 500 µm, 106 µm and 20 µm sieves into a beaker (Hooper et al., 2005). The resultant suspension containing RKN eggs was incubated on plates lined with a serviette in darkness for 14 days and freshly hatched J2s were collected from fourth day every two days (Coyne et al., 2007). The numbers of freshly hatched J2s per ml were determined under the microscope at $\times 40$ using grid-49 nematode counting dish (Hussey and Barker, 1973). The nematode suspension was adjusted with sterile distilled water to 2000 J2s/ml for use in the greenhouse.

2.4.3 Nursery establishment

A certified nursery (Kenya Agriculture, Livestock and Research Organization at Horticulture Research Institute) provided the susceptible cultivar of tree tomato seeds, which were then immersed in sterilized distilled water for a day. After soaking, the seeds were placed in sterile petri plates, lined with moist tissue paper and wrapped with Parafilm. The petri plates were covered with aluminum foil and kept on the benches in the greenhouse for 12 to 15 days. Following germination, the seeds were placed in sterile media-filled germination trays and maintained for four weeks before being transplanted into pots.

2.4.4. Preparation of growth media for greenhouse experiments

A 2:1 proportion of sand to soil was thoroughly mixed and heated-sterilized to 100 degrees Celsius for 48 hours. To prevent contamination, 2 kilograms of the sterilized media were placed in thoroughly cleaned plastic pots (12-cm-diameter) that had been sterilized with 1.5% of NaOCl.

2.4.5 Greenhouse treatments

Sterile soil media (2 sand: 1 soil) was placed in sterile plastic pots in the greenhouse. At transplanting, 40 ml of 1 ml/L Velum[®] nematicide was applied to the soil in pots. One four-week old tree tomato seedling was then transplanted per pot. Seedlings were treated with 40 ml of 1×10^6 spores/ml of either endophytic *Colletotrichum nigrum* or commercial *Trichoderma asperellum* soil drench at transplanting. Pots were inoculated with 2000 J2s of RKN each. Pots inoculated with J2s of RKN only served as positive control while un-treated pots without nematode J2s served as negative control (absolute control). The treatments had four replicates each and arranged in CRD. The treatments were as follows:

- i) *Colletotrichum nigrum* + Velum[®] + Nematodes
- ii) *C. nigrum* + Velum[®] - Nematodes
- iii) *Trichoderma asperellum* + Velum[®] + Nematodes
- iv) *T. asperellum* + Velum[®] - Nematodes
- v) *C. nigrum* + Nematodes
- vi) *C. nigrum* - nematodes
- vii) *T. asperellum* + Nematodes
- viii) *T. asperellum* - Nematodes
- ix) Velum[®] + Nematodes
- x) Velum[®] - Nematodes
- xi) Nematodes alone
- xii) Untreated and un-inoculated

The experiments were terminated 90 days after transplanting.

2.4.6 Evaluation of root-knot nematode disease parameters

The J2s of RKN were extracted from 200 cm³ of soil or 5 g of roots using modified Baermann technique (Hooper *et al.*, 2005; Coyne *et al.*, 2007). Five grams of roots were washed and chopped into 1 cm pieces and macerated in a blender for one minute. Nematodes were extracted using the above technique. The set-ups were incubated for 48 hours for nematode recovery. Then the nematode suspension was poured into 20µm sieve, backwashed gently and collected into a beaker and concentrated to 10 ml using a test sieve. Then 2 ml suspension of nematodes was pipetted into a nematode counting dish and nematodes counted at $\times 10$ under dissecting microscope and enumerated from the original concentrated suspension for each sample. The nematodes were expressed per 200 cm³ of dry soil or 5 g of roots.

Galling and egg mass indices were determined using a scale of 0-5 (Quesenberry *et al.*, 1989) as shown in Table 1 below. Individual root systems were washed, and galling/egg mass indices were scored.

Table 1: Scoring scale for root-knot nematode galling and egg mass indices

Score	Description
0	No galls or No egg masses per root system
1	1-2 galls or egg masses per root system
2	3-10 galls or egg masses per root system
3	11-30 galls or egg masses per root system
4	31-100 galls or egg masses per root system
5	>100 galls or egg masses per root system

Phloxine-B (Holbrook *et al.*, 1983) was used to stain root systems to visualize egg masses and RKN females. The roots were immersed in phloxine-B for 20 minutes (Daykin and Hussey, 1985), and then rinsed in tap water to remove excess stain before viewing under a dissecting microscope.

The nematode reproduction factor (Rf) was determined from final nematode populations (Pf) and initial nematode populations (Pi) expressed as a ratio of Pf: Pi.

2.4.7 Evaluation of plant growth parameters

A centimeter graduated ruler was used to measure plant shoot height from the soil baseline to the newest apical shoots at the conclusion of the experiment. At the end of the experiment (90 days after transplanting), the dry weights of root and shoot were measured in grams. Plants were gently uprooted, and shoots and roots were separated by cutting at the base. To remove adhering soil, the roots were washed in flowing water under the tap and dried with blotting paper. The shoots and roots were placed in separate paper bags with clear labels and oven-dried at 60°C for three days to achieve constant mass.

2.5 Data analysis

The data was organized in excel sheets and analyzed using SAS version 9.2 computer software's one way analysis of variance (ANOVA). Tukey's Honest Significant Differences (HSD where $P \leq 0.05$) was used to separate the significant means. Regression and correlation analysis were done to evaluate the relationship between RKN disease parameters

3. RESULTS

3.1 Compatibility of Velum[®] prime with endophytic *Colletotrichum nigrum* and *Trichoderma asperellum* against J2s of RKN

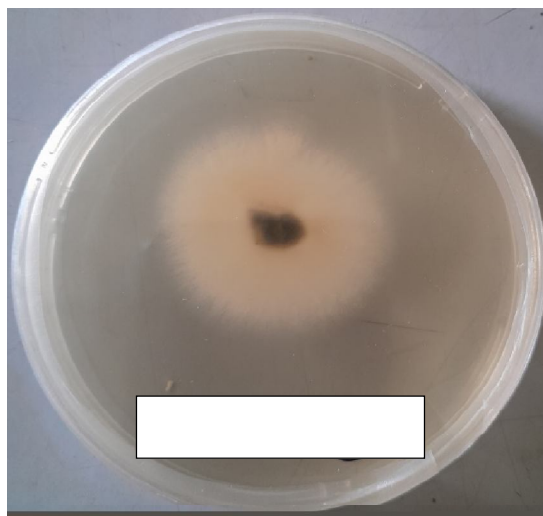
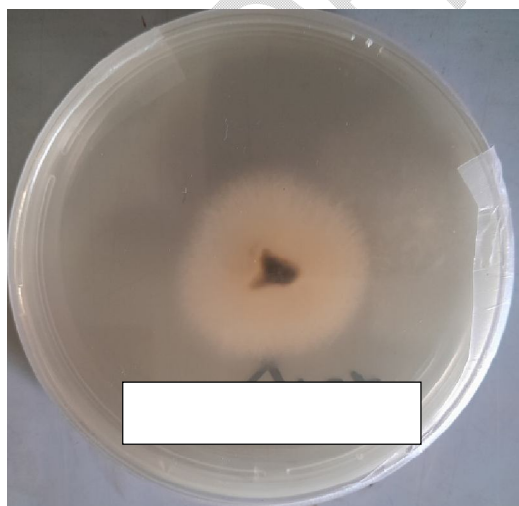
3.1.1 Effect of Velum[®] on colony growth of endophytic *Colletotrichum nigrum* isolate and commercial *Trichoderma asperellum* *in vitro*

There was no significant difference ($P \geq 0.05$) in the colony diameter of endophytic *C. nigrum* exposed to Velum[®] compared to the untreated control (*C. nigrum* alone) as shown in Table 2 (experiments I and II) and plate 2. Commercial *T. asperellum* colony diameter did not also differ significantly with the un-treated control (*T. asperellum* only) on exposure to Velum[®] in experiment I and II as shown in Table 2 and plate 2.

Table 2: Effect of Velum[®] on growth (colony diameter) of *Colletotrichum nigrum* isolate and *Trichoderma asperellum*

Treatments	Expt. I	Expt. II
	% Inhibition	% Inhibition
Isolated <i>C. nigrum</i> + Velum [®]	1.00 ± 0.79a	1.02 ± 0.73a
Isolated <i>C. nigrum</i> alone (control)	0.00 ± 0.00a	0.00 ± 0.00a
Commercial <i>T. asperellum</i> + Velum [®]	1.01 ± 0.58a	0.99 ± 0.33a
Commercial <i>T. asperellum</i> alone (control)	0.00 ± 0.00a	0.00 ± 0.00a
P-value	0.29	0.27

Data are means ± SE of four replicates. Means followed by the same letter(s) on the same column are not significantly different ($P \geq 0.05$) according to Tukey's Honestly Significant Difference (HSD) test



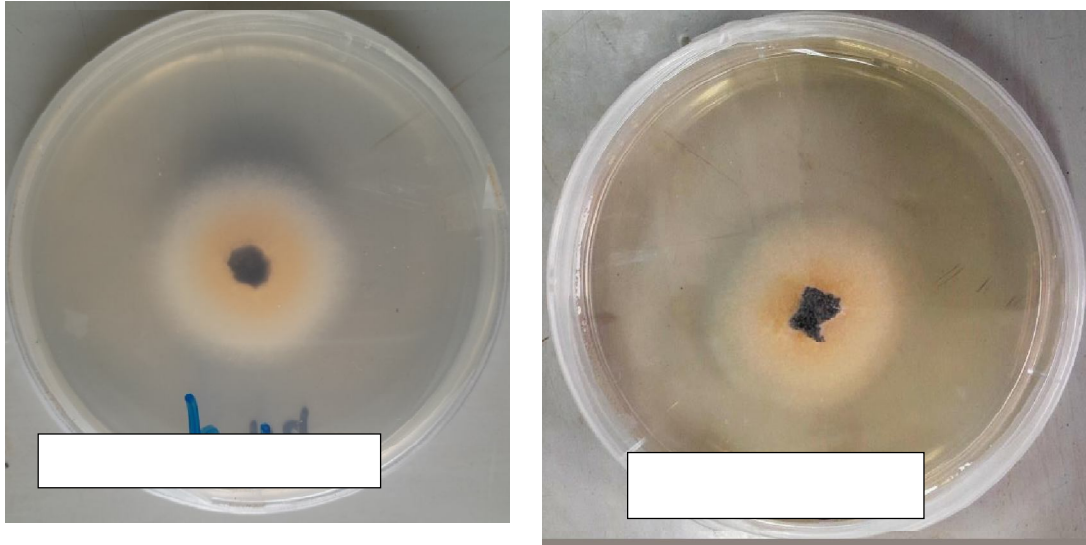


Plate 2: Effect of Velum[®] on colony diameter of endophytic *Colletotrichum nigrum* and commercial *Trichoderma asperellum* in vitro

3.1.2 Efficacy of combining *Colletotrichum nigrum* and *Trichoderma asperellum* with Velum[®] against RKNs on tree tomato; Greenhouse tests I and II

3.1.2.1 Effect on second stage juveniles of RKN population in soil and roots

The soil population of J2s differed significantly ($P \leq 0.05$) among the treatments (Table 3). Nematode-inoculated plants treated with *C. nigrum* + Velum[®] had the lowest population of J2s per 200 cc of dry soil followed by those treated with *T. asperellum* + Velum[®] and Velum[®] alone, respectively (Table 3). All treatments significantly reduced nematode populations in the rhizospheric soil compared to the positive control.

The second stage juvenile populations (J2s) in roots were statistically different ($P \leq 0.05$) between all treatments. Nematode-inoculated plants with *C. nigrum* + Velum[®] treatment had the lowest J2s per 5g of dry roots followed by those treated with *T. asperellum* + Velum[®] and Velum[®] alone, respectively (Tables 3). All treatments significantly reduced RKN J2 populations in roots as compared to the positive control.

3.1.2.2 Effect on RKN reproduction factor

The RKN reproduction factor was statistically different ($P \leq 0.05$) between different treatments as shown in Table 3. The *C. nigrum* + Velum[®] treatment significantly reduced RKN reproduction factor followed by *T. asperellum* + Velum[®] and Velum[®] alone relative to positive control

Table 3: Efficacy of combining *Colletotrichum nigrum* and *Trichoderma asperellum* with Velum[®] on J2 populations and RKN reproduction factor on tree tomato in the greenhouse test I and II

RKN disease parameters						
Treatments	Greenhouse test I			Greenhouse test II		
	J2s in soil	J2s in roots	RF	J2s in soil	J2s in roots	RF
<i>C.nigrum</i> + J2s	549.17 ± 24.85b	186.25 ± 23.04b	0.28 ± 0.01b	542.50 ± 12.96b	182.50 ± 31.52b	0.27 ± 0.01b
<i>T. asperellum</i> + J2s	580.83 ± 18.00b	198.75 ± 12.14b	0.29 ± 0.01b	574.17 ± 31.56b	191.25 ± 4.73b	0.29 ± 0.02b
<i>C. nigrum</i> + Velum [®] + J2s	215.83 ± 9.26d	45.00 ± 28.50d	0.11 ± 0.01cd	208.33 ± 12.29d	41.25 ± 4.27d	0.10 ± 0.01cd
<i>T. asperellum</i> + Velum [®] + J2s	226.67 ± 5.27d	57.50 ± 12.50d	0.14 ± 0.02cd	219.17 ± 9.44d	51.23 ± 2.39d	0.11 ± 0.01cd
Velum [®] + J2s	303.27 ± 6.21c	111.35 ± 9.05c	0.17 ± 0.03c	312.00 ± 14.07c	107.25 ± 9.08c	0.15 ± 0.02c
Positive control (J2s alone)	3223.33 ± 30.46a	516.25 ± 30.44a	1.61 ± 0.02a	3211.67 ± 113.81a	498.75 ± 14.63a	1.61 ± 0.06a
Negative control	0.00 ± 0.00e	0.00 ± 0.00e	0.00 ± 0.00d	0.00 ± 0.00e	0.00 ± 0.00e	0.00 ± 0.00d
P-value	<.0001	<.0001	<.0001	<.0001	<.0001	<.0001

Data are means ± SE of four replicates. Means followed by different letter(s) in the same column are significantly different according to Tukey's Honestly significant difference (HSD) test at $P \leq 0.05$. **J2s** = second stage juveniles of RKNs; **Rf** = Nematode reproduction factor calculated as a ratio of final nematode populations (Pf) to initial nematode populations (Pi). Negative control = untreated control without nematodes.

Regression analysis indicated a positive linear association between nematode reproduction factor (Rf) and RKN J2 populations (Figure 1). A further investigation showed that the Rf and soil J2 populations correlated positively ($r=1$, $P=0.05$).

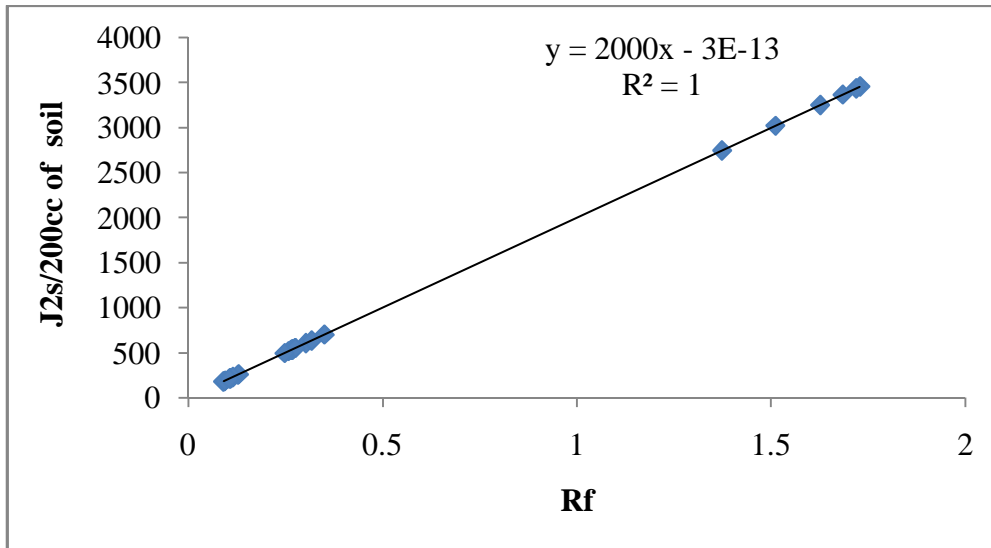


Figure 1: Relationship between nematode reproduction factor and J2 populations in the soil (Greenhouse test)

3.1.2.3 Effect on galling index and egg mass index

There was an existence of statistical difference ($P \leq 0.05$) in terms of indices on gall and egg masses among the treatments (Table 4). Plants treated with *C. nigrum* + Velum[®] had the lowest gall and egg mass indices followed by those treated with *T. asperellum* + Velum[®] and Velum[®] alone as shown in Table 4. The least gall and egg mass indices reduction was shown in *T. asperellum* standalone treatment.

Table 4: Efficacy of combining *Colletotrichum nigrum* and *Trichoderma asperellum* with Velum on indices of galling and egg masses on tree tomato in the greenhouse tests I and II

Treatments	Plant disease parameters			
	Greenhouse test I		Greenhouse test II	
	GI	EMI	GI	EMI
<i>Colletotrichum nigrum</i> + Nematodes	3.67 ± 0.21b	2.75 ± 0.25bc	3.83 ± 0.09b	3.00 ± 0.00b
<i>Trichoderma asperellum</i> + Nematodes	3.83 ± 0.17b	3.25 ± 0.25b	3.67 ± 0.56b	3.33 ± 0.50b
<i>C. nigrum</i> + Velum [®] + Nematodes	1.50 ± 0.43cd	1.50 ± 0.29cd	1.00 ± 0.45d	1.17 ± 0.31d
<i>T. asperellum</i> + Velum [®] + Nematodes	2.00 ± 0.43cd	2.00 ± 0.00c	1.50 ± 0.43d	1.33 ± 0.33d
Velum [®] + Nematodes	2.25 ± 0.51 c	2.05 ± 0.01c	2.00 ± 0.50c	2.00 ± 0.00c
Positive control (Nematodes alone)	5.00 ± 0.00a	5.00 ± 0.00a	5.00 ± 0.00a	5.00 ± 0.00a
Negative control (untreated/uninoculated)	0.00 ± 0.00d	0.00 ± 0.00d	0.00 ± 0.00e	0.00 ± 0.00e
P-value	<.0001	<.0001	<.0001	<.0001

Data are means ± SE of four replicates. Means followed by different letter(s) in the same column are significantly different according to Tukey's Honestly significant difference (HSD) test at $P \leq 0.05$. **J2s** = second stage juveniles of RKNs; **GI** = Galling index; **EMI** = Egg mass index; Negative control = untreated control without nematodes. GI and EMI were scored on a scale of 0-5, where 0 = no gall/egg masses; 1=1-2 galls/egg masses; 2=3-10 galls/egg masses; 3=11-30 galls/egg masses; 4=31-100 galls/egg masses and 5=>100 galls/egg masses (Quesenberry *et al.*, 1989).

3.1.2.4 Effect on shoot height

The heights of plants in various treatments significantly differed ($P \leq 0.05$) from one another. The heights of uninoculated (without nematodes) plants treated with *C. nigrum* and *Trichoderma asperellum* as standalone treatments had statistically higher ($P \leq 0.05$) shoots than those of the negative control (without nematodes and without treatments) as shown in Table 5. The heights of nematode-inoculated *C. nigrum* + Velum[®], *T. asperellum* + Velum[®], *C. nigrum* and *T. asperellum* treated plants were significantly higher than those of the positive control (nematodes alone). The results showed that all treatments increased the height of shoots of tree tomato relative to the positive control (Plate 3 and Table 5).

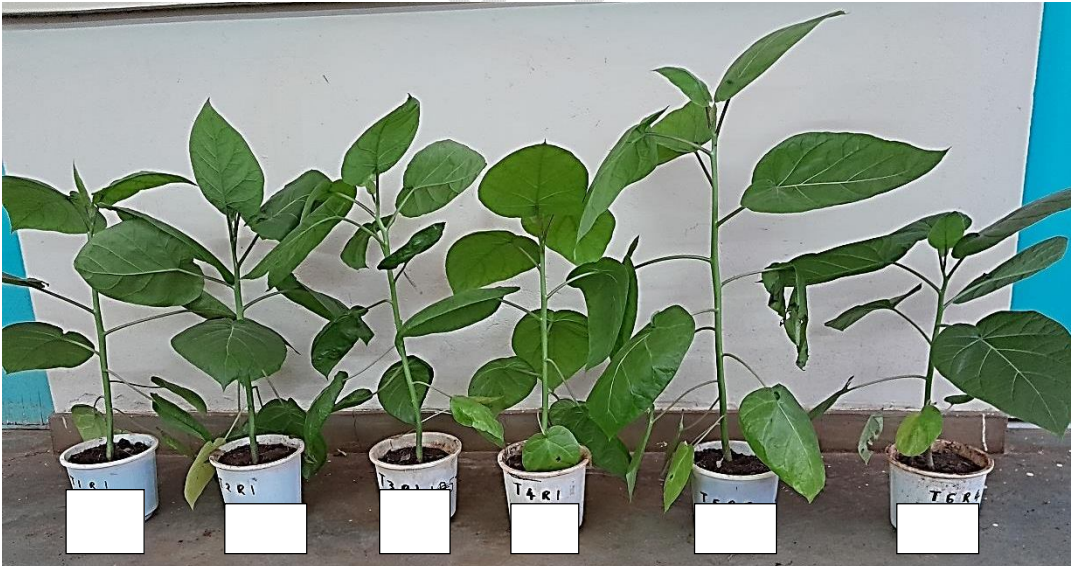




Plate 3: Effect of combining *Colletotrichum nigrum* and *Trichoderma asperellum* with Velum on shoot height of tree tomato in the greenhouse test.

a - h represents treatments where; **a** = inoculated + *Colletotrichum nigrum*; **b** = inoculated + *Trichoderma asperellum*; **c** = inoculated + *C. nigrum* + Velum[®]; **d** = inoculated + *T. asperellum* + Velum[®]; **e** = negative control (un-treated and un-inoculated); **f** = Positive control (un-treated and inoculated); **g** = *C. nigrum* alone; and **h** = *T. asperellum* alone

3.1.2.5 Effect on dry root weight

There was significant difference ($P \leq 0.05$) in dry root weight of plants among different treatments (Table 5). The highest dry root weight was recorded in un-inoculated (without nematodes) *C. nigrum* treated plants followed by un-inoculated plants treated with *T. asperellum* and negative control (untreated and un-inoculated). All un-inoculated treated plants had significantly higher dry root weights than those of inoculated treatments. The dry root weights of inoculated treatments had significantly higher dry root weights than those of the positive control (nematodes alone). *Colletotrichum nigrum* + Velum[®] had significantly higher dry root weight among nematode inoculated treatments compared to the positive control.

3.1.2.6 Effect on dry shoot weight

The dry shoot weights were significantly different ($P \leq 0.05$) among the treatments (Table 5). The dry shoot weights of un-inoculated and treated plants were significantly higher than those of the inoculated and the positive control. Un-inoculated plants treated with *C. nigrum* and Un-inoculated plants treated with *T. asperellum* had higher dry shoot weights as compared to the negative control (Table 5). The dry shoot weights of inoculated and treated plants were significantly higher than those of the positive control. Inoculated plants treated with *C. nigrum* + Velum[®] had the highest dry shoot weights compared to the positive control.

Table 5: Effect of combining *Colletotrichum nigrum* and *Trichoderma asperellum* with Velum on shoot height (cm) and dry weights (gms) of tree tomato in the greenhouse test I and II

Plant growth parameters						
Treatments	Greenhouse test I			Greenhouse test II		
	SH	DRW	DSW	SH	DRW	DSW
<i>C. nigrum</i> + Velum [®] + J2s	35.18 ± 0.64c	4.56 ± 0.07b	8.25 ± 1.5b	35.67 ± 2.57d	4.20 ± 0.40b	9.19 ± 1.32b
<i>C. nigrum</i> + Velum [®] - J2s	43.98 ± 1.49ab	6.84 ± 0.65 ab	10.25 ± 0.25ab	45.87 ± 1.11b	6.27 ± 0.58ab	11.34 ± 0.50a
<i>T. asperellum</i> + Velum [®] + J2s	34.37 ± 1.76c	3.99 ± 0.79c	8.08 ± 0.92b	35.05 ± 2.00d	3.85 ± 0.21b	9.01 ± 1.14b
<i>T. asperellum</i> + Velum [®] - J2s	43.81 ± 1.44ab	6.72 ± 0.69b	10.13 ± 0.96ab	45.03 ± 1.10b	6.23 ± 0.50ab	11.17 ± 0.53a
<i>C. nigrum</i> + J2s	33.22 ± 1.77c	3.11 ± 0.12c	7.87 ± 0.31c	34.92 ± 2.25d	3.09 ± 0.34bc	8.71 ± 1.06b
<i>C. nigrum</i> - J2s	46.87 ± 1.41a	7.64 ± 0.16a	11.65 ± 0.43a	48.67 ± 0.77a	7.15 ± 0.26a	12.14 ± 0.38a
<i>T. asperellum</i> + J2s	33.02 ± 0.59c	3.00 ± 0.66c	7.10 ± 0.53c	33.91 ± 1.15d	2.93 ± 0.24bc	8.64 ± 0.51b
<i>T. asperellum</i> - J2s	46.53 ± 0.50a	7.31 ± 0.48a	11.22 ± 0.27a	48.33 ± 0.98a	7.05 ± 0.39a	11.80 ± 0.56a
Velum [®] + J2s	34.01 ± 1.70c	4.14 ± 0.88b	6.99 ± 1.45c	34.47 ± 2.21d	4.03 ± 0.38b	6.09 ± 1.12c
Velum [®] - J2s	39.10 ± 0.57b	4.85 ± 0.81b	7.03 ± 0.41c	40.21 ± 0.99c	4.22 ± 0.40b	7.06 ± 1.09c
Positive control (J2s alone)	26.08 ± 0.64d	2.03 ± 0.33d	5.09 ± 0.20d	29.25 ± 1.91e	1.97 ± 0.20c	5.84 ± 0.43d
Negative control	42.63 ± 1.52ab	6.37 ± 0.64ab	10.02 ± 0.26ab	44.50 ± 1.68b	6.15 ± 0.49ab	10.47 ± 0.44ab
P-value	<.0001	<.0001	<.0001	<.0001	<.0001	<.0001

Data are means ± SE of four replicates. Means followed by different letter(s) in the same column are significantly different according to Tukey's Honestly significant difference (HSD) test at P≤0.05. **J2s** = second stage juveniles of RKNs; **SH** = shoot height; **DRW** = Dry root weight and **DSW** = Dry shoot weight. Negative control = untreated control without nematodes.

4. DISCUSSION

4.1 Compatibility of Velum prime with endophytic *Colletotrichum nigrum* and commercial *Trichoderma asperellum* against RKNs on tree tomato

Velum[®] (nematicide) did not inhibit the colony growths of *C. nigrum* and *T. asperellum* on PDA media. These results corroborate a research carried out by Kibunja. (2015) on the effect of selected endophytic fungi and resistant tomato cultivars on *Meloidogyne* spp. The author tested the compatibility of Mocap (active ingredient: ethoprophos= organophosphate) and *Trichoderma* spp. and reported that Mocap had no significant effect on *Trichoderma* isolates. In this study, this could be due to Velum[®] being a systemic non-fumigant is relatively less toxic to soil microflora (Wada and Toyota, 2008). Non-fumigants are said to have little effect on organisms that lack the nervous system since these nematicides act as cholinesterase inhibitors in the neurons (Bhattacharjee and Dey 2014).

The reduction in plant disease parameters could be due to production of nematotoxic secondary metabolites (flavonoids, terpenoids, trichodermin, colletonic acid etc) and direct parasitism by the biocontrol fungi. Other studies have shown that biocontrol endophytic fungi produce toxic metabolites against RKNs (Kumar *et al.*, 2023; Yao *et al.*, 2023; Meyer *et al.*, 2020). Velum[®] is known to act against soil pathogens and enhance plant health (Chen *et al.*, 2020). The nematicidal effect of Velum[®] on nematodes has been variously described (Beeman and Tylka, 2018; Faske and Hurd, 2015; 2016; Roper, 2017). This could explain the reduced disease parameters by the combined application of biocontrol fungi with Velum[®]. Other studies have highlighted the nematicidal effect of Velum[®] (Dahlin, *et al.*, 2019). *Colletotrichum nigrum* could have worked synergistically with Velum[®] against the RKN J2s resulting into decreased disease parameters and enhanced plant growth. These results are in agreement with Dahlin, *et al.* (2019) who noted that combining *Purpureicillium lilacinum* (strain PL251) with Velum[®] reduced J2 populations of *M. incognita* by 68% and gall index to 1.8 as compared to control (3.8). The same treatment also enhanced yield of tomatoes under greenhouse tests. Muthulakshmi *et al.* (2012) also found that combining carbofuran with biocontrol agents significantly increased the number and weight of potato tubers per plant and reduced potato cyst nematode populations in potatoes.

The biocontrol fungi increased the plant growth parameters of tree tomato when applied alone and in combination with Velum[®] in the greenhouse tests. As standalone applications, these biocontrol fungi (*C. nigrum* and *T. asperellum*) could be possessing plant growth promoting abilities. This could explain the increased shoot heights and dry weights of root and shoot of tree tomato plants. Some fungi such as *Trichoderma* spp. are known to act as biofertilizers which improves plant growth (Kubheka and Ziena, 2022). *Trichoderma* spp. have been used to produce volatile chemicals (alkaloids, colletonic acid, esters, alcohols, ketones etc) against soil pathogens, solubilizes phosphates to make them available for plant absorption in acidic soils and also enhances uptake of micro and macro- nutrients by plants (Kubheka and Ziena, 2022). The endophytic fungi are also known to confer protection to plants against other pathogens (Silva Santos *et al.*, 2022) and this could explain the reduced plant disease parameters shown by their application in this study. Another research showed that endophytic *Colletotrichum tofieldiae* promoted plant growth of maize and tomato *in-vitro* resulting into higher shoot heights and weights (Conzalez-Diaz Sandra, *et al.*, 2020). Silva Santos *et al.* (2022) also found out that inoculating tomato plants with *Colletotrichum siamense* increased plant biomass. As combined treatments (Biocontrol fungi + Velum[®]) were able to enhance plant growth parameters (shoot

height and dry weights) and also reduced plant disease parameters (nematode populations, egg masses and gall indices and reproduction factor).

Tree tomato farmers should utilize cost effective management options to maximize on their profit. This may involve use of biological control agents (BCAs) and/or nematicides. This could consist of combining compatible nematicides with biological agents for their additive effects against RKNs. The findings of this study could be used to promote integrated nematode management using less toxic nematicides and biocontrol agents especially under field conditions where efficacy of BCAs is limited (Koll et al, 2011).

5. CONCLUSION

Velum[®] was found compatible with endophytic *Colletotrichum nigrum* and commercial *T. asperellum*. This study demonstrated that their co-application significantly reduced root-knot nematode populations in the soil and roots of tree tomato and therefore have potential of being used in integrated nematode management especially under field conditions where efficacy of BCAs is erratic. The integration of chemical nematicides and biological approaches may become a critical component in the management of RKNs. Apart from Velum[®], other combinations should be tested for compatibility and applied as integrated approach rather than as standalone treatments in the management of RKNs. Integrated nematode management (INM) may not only be used for different categories of compatible RKN management but also embrace utilization of different components of BCAs in combination with favourable chemicals that have low toxicities.

6. RECOMMENDATION

Further research should be conducted to determine the mechanisms of action of the endophytic *Colletotrichum nigrum* on RKN J2s. Apart from Velum[®], other combinations should be tested for compatibility and applied as integrated approach rather than as standalone in the management of RKNs.

Data availability

All data supporting the findings of this study are presented in this paper.

7. REFERENCES

1. Abad, P.; Favory, B.; Rosso, M. N.; Castagnone-Sereno, P. Rootknot nematode parasitism and host response: molecular basis of a sophisticated interaction. *Molecular Plant Pathology*. 2003, 4, 217–224. (10)
2. AFA (Agriculture and Food Authority) and Kenya National Bureau of statistics. (2021). [www.agricultureauthority.go.ke/ Validated- Horticulture-Data-Report 2019-2020](http://www.agricultureauthority.go.ke/Validated-Horticulture-Data-Report-2019-2020), pages 75-76.
3. Beeman, A.Q., Tylka, G.L., 2018. Assessing the effects of Ilevo and Votivo seed treatments on reproduction, hatching, motility, and root penetration of the soybean cyst nematode, *Heterodera glycines*. *Plant Disease*. 102, 107–113. <https://doi.org/10.1094/PDIS-04-17-0585-RE>.
4. Bhattacharjee, R., and Dey, U. (2014). An overview of fungal and bacterial bio-pesticides to control plant pathogens/diseases. *African Journal of Microbiology Research*, 8(17): 1749–1762.
5. Behdani, M., Pooyan, M., & Abbasi, S. (2012). Evaluation of antifungal activity of some medicinal plants essential oils against *Botrytis cinerea*, causal agent of postharvest apple rot, *in vitro*. *International Journal of Agriculture and Crop Sciences*, 4(14), 1012-1016.

6. Chen J., Li Q. X. and Song B. (2020). Chemical nematicides-recent research progress and outlook. *Journal of agriculture, food and chemistry*, 2020, 68, 44, 12175-12188. <https://doi.org/10.1021/acs.jafc.0c02871>.
7. Coyne, D. L., Nicol, J. M. and Claudius-Cole, B. (2007). Practical plant nematology: A field and laboratory guide. SP-IPM secretariat. International Institute of Tropical Agriculture (IITA), Cotonou, Benin, 32-38.
8. Cumagun, C. J. and Moosavi, M. R. (2015). Significance of Bio-control agents of Phytonematodes. In: Bio-Control Agents of Phytonematodes, Askary, T.H. and P.R. Martinelli (Eds.), CAB International, United Kingdom, ISBN-13: 9781780643755, pp: 50-78.
9. Dahlin, P., Eder, R., Consoli, E., Krauss, J., and Kiewnick, S. (2019). Integrated control of *Meloidogyne incognita* in tomatoes using fluopyram and *Purpureocilliumlilacinum* strain 251. *Crop Protection*. 124:104874. doi: 10.1016/j.cropro.2019.104874
10. d'Errico, G.; Marra, R.; Crescenzi, A.; Davino, S. W.; Fanigliulo, A.; Woo, S. L.; Lorito, M. Integrated management strategies of *Meloidogyne incognita* and *Pseudopyrenochaetalycopersici* on tomato using a *Bacillus firmus*-based product and two synthetic nematicides in two consecutive crop cycles in greenhouse. *Crop Protection*. 2019, 122, 159– 164.
11. Díaz-González S, Marín P, Sánchez R, Arribas C, Kruse J, GonzálezMelendi P, Brunner F, Sacristán S. 2020. Mutualistic fungal endophyte *Colletotrichum tofieldiae*Ct0861 colonizes and increases growth and yield of maize and tomato plants. *Agronomy*. 10(10):1493. doi:10.3390/agronomy10101493.
12. Faske, T., Hurd, K., 2015. Sensitivity of *Meloidogyne incognita* and *Rotylenchulus reniformis* to fluopyram. *Journal of Nematology*. 47, 316.
13. Gine, A., Sorribas, F.J., 2017. Effect of plant resistance and BioAct WG (*Purpureocilliumlilacinum* strain 251) on *Meloidogyne incognita* in a tomato-cucumber rotation in a greenhouse. *Pest Management Science*. 73, 880–887. <https://doi.org/10.1002/ps.4357>.
14. Holbrook, C. C., Knauff, D. A. and Dickson, D. W. (1983). A technique for screening peanut resistance to *Meloidogyne arenaria*. *Plant Disease*, 67:957-958
15. Hooper, D. J., Hallmann, J. and Subbotin, S. A. (2005). Methods for extraction, processing and detection of plant and soil nematodes. Plant parasitic nematodes in subtropical and tropical agriculture, 2nd ed, 53-86.
16. Huang, B., Li, J., Wang, Q., Guo, M., Yan, D., Fang, W., Ren, Z., Wang, Q., Ouyang, C., Li, Y., Cao, A., 2018. Effect of soil fumigants on degradation of abamectin and their combination synergistic effect to root-knot nematode. *PLOS One* 13, e0188245. <https://doi.org/10.1371/journal.pone.0188245>.
17. Huang, G.; Dong, R.; Allen, R.; Davis, E. L.; Baum, T. J.; Hussey, R. S. A Root-Knot Nematode Secretory Peptide Functions as a Ligand for a Plant Transcription Factor. *Molecular Plant-Microbe Interaction*. 2006, 19 (5), 463–470
18. Hussey, R.S., Barker, R.R. (1973). A comparison of methods of collecting inocula of *Meloidogyne* spp., including a new technique. *Plant Disease and Reproduction*. 57, 1025–1028. <https://ci.nii.ac.jp/naid/10012535898/>.
19. Jones, J.T., Haegeman, A., Danchin, E.G., Gaur, H.S., Helder, J., Jones, M.G., Kikuchi, T., Manzanilla-Lopez, R., Palomares-Rius, J.E., Wesemael, W.M.L., Perry, R.N., 2013. Top

- 10 plant-parasitic nematodes in molecular plant pathology. *Molecular Plant Pathology*. 14, 946–961. <https://doi.org/10.1111/mpp.12057>.
20. Kibunja J. W. (2015). Effect of selected endophytic fungi and resistant tomato cultivars on *Meloidogyne* spp. in the coastal region, Kenya. PhD Thesis, Kenyatta University, Nairobi, Kenya.
 21. Kubheka, B. P., & Ziena, L. W. (2022). *Trichoderma*: A biofertilizer and a bio-fungicide for sustainable crop production. DOI: 10.5772/intechopen.102405
 22. Kumar, A. P., Murali, V., Ngaraju, K. and Srinivas, M. (2023). Fungal endophytes: A potential application in integrated plant health management. *International journal plant and soil science*. Vol. 35(18): 1570-1578. <https://doi.org/10.9734/ijpss/2023/v35:183427>
 23. Li, J., Zou, C., Xu, J., Ji, X., Niu, X., Yang, J., Huang, X., Zhang, K.Q., 2015. Molecular mechanisms of nematode-nematophagous microbe interactions: basis for biological control of plant-parasitic nematodes. *Annual Review of Phytopathology*. 53, 67–95. <https://doi.org/10.1146/annurev-phyto-080614-120336>.
 24. Meyer, S. L. F., Patchett, B. J., Gillanders, T. J., Kantori, M. R., Timper, P., Macdonald, M. H. (2020). Festulolium and fungal endophyte associations: Host status for *Meloidogyne incognita* and nematotoxic plant extracts. *Journal of nematology*. 2020;52:le2020-76
 25. Muriithi, C., Matiri, F., Kihanda, F., Maina, D. & Kasungu, F. (2013). Evaluation of potential of tree tomato production and marketing in Eastern Kenya for improved nutrition and food security. *Joint Proceedings of the 27th Soil Science Society of East Africa and the 6th African Soil Science Society Conference*.
 26. Muthulakshmi M, Kumar S, Subramanian S, Anita B (2012) Compatibility of *Pochoniachlamydosporia* with other biocontrol agents and carbofuran. *Journal of Biopesticides* 5:243–245
 27. Orlando V, Muthulakshmi M, Kumar S, Subramanian S, Anita B (2012) Compatibility of *Pochoniachlamydosporia* with other biocontrol agents and carbofuran. *Journal of Biopesticides* 5:243–245
 28. Pedrosa A. G. S. (2016). Genetic variability analysis of tamarillo (*Solanum betaceum* Cav.) and optimization of micropropagation conditions. University of Coimbra.
 29. Quesenberry, K.H., Baltensperger, D.D., Dunn, R.A., Wilcox, C.J. and Hardy, S. R. (1989). Selection for tolerance to root-knot nematodes in red clover. *Crop science*, 29:62-6.
 30. Ramírez-Gil, J. G., Gil-Aguirre, A. & Morales-Osorio, J. G. (2017). Etiología de enfermedades del cultivo de tomate de árbol (*Solanum betaceum* CAV.). *Revista de Protección Vegetal*, 32(1), 33–51.
 31. Roper, R.J., 2017. Evaluation of the In-Furrow Nematicide Velum Total for Management of *Meloidogyne incognita* in Cotton. <http://hdl.handle.net/2346/72681>.
 32. Sikora, R.A.; Fernandez, E. (2005), Nematode parasites of vegetables. In: Plant Parasitic Nematodes in subtropical and Tropical Agriculture, ed. Luc, M., Sikora, R.A., Bridge, J. CABI Publishing, Wallingford, UK, pp. 319-392.
 33. Singh, C., Sharma, N. and Singh, B. R. (2016). *Trichoderma harzianum*: Mass multiplication and its interactions with different fungicides. *Journal of Biotechnology and Biosafety*. 4: 332-338.
 34. Singh, M., Sharma, N., Tiwari, N., Kumar, N., 2017. Impact of climate change on global food security-challenges, adaptation measures and mitigating strategies. *Journal of Pure and Applied Bioscience*. 5, 381–394 <http://eprints.icrisat.ac.in/id/eprint/15326>.

35. Trudgill, D. L. & Blok, V. C. (2001). Apomictic, polyphagous root-knot nematodes: Exceptionally successful and damaging biotrophic root pathogens. *Annual Review of Phytopathology*, 39(1), 53–77.
36. Waswa S. J., Waceke J. W and Nchore S, B. (2020). Occurrence and Phytonematodes in Tree Tomato (*Solanum betaceum* Cav.) Farming Systems in Kenya. *Researchjournali's Journal Agriculture*, Vol.7|No.7, August|2020. <http://www.researchjournali.com/5605.pdf>
37. Yao, Y., Huo, J., Ben, H., Gao, W., Hao, Y., Wang, W. and Xu, J. (2023). Biological efficacy of endophytic fungus, *Acremonium sclerotigenum*, against *M. incognita* under *in vitro* and *in vivo* conditions. *Biologia*. <https://doi.org/10.1007/s11756-023-01505-4>

UNDER PEER REVIEW