

# Anti inflammatory and Antimicrobial activity of *Gymnemasylvestre* leaves extract

## **Abstract-**

We have undertaken to evaluate the pharmacological studies of *Gymnemasylvestre* using pharmacological methods, disc diffusion, and anti-inflammatory methods. The Alkaloid, Carbohydrate, Protein, Resin, Saponin, and Glycosides were present whereas, steroid, flavanoid, and tannin were absent in phytochemical screening in *G. sylvestre* extract. The result showed induced paw edema using Carrageenan model. The dose-dependent antibacterial activity was also observed. The present study is important because *Gymnemasylvestre* plant is important to cure various ailments in traditional medicine. Since the diabetes is spreading in all over the world as an epidemic and there is no permanent treatment in allopathy therefore people are looking alternative medicine for treatment of diabetes.

**Key Words:** Antibacterial, Phytochemical, *Gymnemasylvestre*, Anti-inflammatory activity

## **INTRODUCTION**

“The leaves of *Gymnema* reported a loss of sweet taste. The major chemical constituents of *Gymnema* are gymnemic acid and gumarin. It was reported that gymnemic acids have antidiabetic, anti-sweetener, anti-inflammatory, antioxidant activities, and antidote properties” ((Gloria *et al* 2003, Dateo *et al*, 1973, Kanetkar *et al*, 2004, Persaud *et al*, 1999, Rachhet *al*, 2009, Puratchimani). “It helps to promote weight loss possibly through its ability to reduce

cravings for sweets and control blood sugar levels. The gumarin peptide block the ability to taste sweet or bitter flavors and thus reduces sweet cravings”(Preussetal, 2004). “The wound healing activity in albinomice. *In vitro*, the inhibitory effects of DPPH radicals and LDL oxidation and muscle relaxant properties and antiallergic activity were reported”(Kiranmaiet al, 2011, Luo et al, 1999, Tandonet al, 2010). “The radio protective and immune modulatory effect of Gymnemic acid was reported on Swiss albino mice induced by radiation The studies reported the anticancer activity of Gymenemasylvestre on MCF 7 (epithelial cells of human breast cancer and A 549 epithelial cells of human lung cancer under in vitro conditions by MTT assay method”(Bhatia et al, 2008, Jitender et al, 2008 , 2009).Srikanthetal, 2010and Sonam andAgrawal,2018).“Leaves and roots of *G.sylvestreis* mainly used in India in traditional medicine as a natural treatment for diabetes as it helps to lower and balance blood sugar levels. *G. Sylvestre* helps to promote weight loss possibly through its ability to reduce cravings for sweets and control blood sugar levels. Since the diabetes is spreading in all over the world as an epidemic and there is no permanent treatment in allopathy therefore peoples are looking alternative medicine for treatment of diabetes therefore we have undertaken to screen this plant for antimicrobial and anti-inflammatory activities. We have already reported the anticarcinogenic activity of this plant”( Sonam and Agrawal,2018)

## **MATERIALS AND METHODS**

### **Extraction Process:-**

### **Procedure:**

The *Gymnemasylvestre* leaves were collected from the local garden of Chitrakoot Uttar Pradesh in the month of April 2020 and were identified by competent Botanist Dr. Manoj Tripathi of DRI, Chitrakoot. . The leaves were cleaned and dried for few days in shade. Then powder was made with the help of grinder. The extraction was done as per the method reported in earlier paper On the day of experimentation, the desired amount of powder was suspended in double distilled water for the final administration. Phytochemical screening was done as per method reported by Agrawal,2021a,b and 2022)

### **1.2 Antibacterial Activity:-**

The test organisms were obtained from the Department of Research, PBCRI Satna (M.P.). Antibacterial screening was done to find out the antibacterial properties of different concentration of 50% methanolic extract of *Gymnemasylvestre* leaves under study Kirby-Bauer Method (Disc diffusion method) was followed to test the antibacterial activity of different concentration of leaves extract.

#### **Evaluation of Anti-inflammatory Activity Carrageenin-induced rat paw oedema**

The mice were divided into five groups ( $n = 3$ ). Acute inflammation was induced by the sub-plantar administration of 0.1 ml of 1% carrageenin in normal saline in the right hind paw of the mice. The paw volume was measured at 0 and 4 h after carrageenin injection, using Plethysmometer. The different groups were made as described in the Table 4. The mice were divided into five groups ( $n = 3$ ). After shaving the fur, the mice were anaesthetized under light ether and 10 mg of sterile cotton pellets were inserted, one in each axilla of the mice. Extract (200, 300 and 500 mg/kg), Phenylbutazone (100 mg/kg) and to group control vehicle were administered orally for seven consecutive days from the day of cotton pellet implantation. The animals were anaesthetized on the eighth day and cotton was removed surgically. The pellets were dried at 60°C. The results were expressed as mean  $\pm$  S.E.M. The significance statistical analysis was performed by  $t$  test and  $P < 0.01$ , implied significance organism was recorded.

## **RESULTS**

The present study revealed the presence of medicinally important bioactive compound. The phytochemical screening of 50% methanolic extract of *Gymnemasylvestre* are depicted in table 1. The result showed the presence of Alkaloid, Carbohydrate, Protein, Resin, Saponin, Glycosides. Only Starch, steroid, flavanoid, tannin are absent in *G. sylvestre* extract.

**Table 1: Qualitative Phyto-chemical Screening of (*Gymnemasylvestre*(Retz.) Schult. (Leaf)**

S. No.	Name of Experiments	Observation	Result
1.	<b>Alkaloids</b>		
	a) Mayer' test	Yellow colour appear	Present
	b) Wagner's test	Brown colour appear	Present
	c) Dragendorff's test	Orange colour appear	Present
2.	<b>Carbohydrate</b>		
	a) Anthrone's test	Dark colour appear	Present
	b) Fehling's test	Green colour appear	Present
	c) Molisch's test	No red – violet ring disapper	Present
3.	<b>Proteins</b>		
	a) Bieuret's test	Green colour appear	Present
	b) Millon's test	White ppt are not appear	Present
5.	<b>Resins</b>	Turbidity are seen	Present
6.	<b>Saponins</b>	Honey comb – like structure are form	Present
7.	<b>Starch</b>	Red colour is formed	Absent
8.	<b>Flavonoid</b>		Absent
	a) Ferric chloride test	Reddis pink colour is appear	Absent
	b) Alkaline reagent test	On addition of dilute acid yellow col our disappear	Present
9.	<b>Steroid</b>		
	a) Salkowski's reaction	A red colour is disappear in the chlor oform layer	Absent
10.	<b>Glycoside</b>		
	a) Borntrager's Test	Colour is change	Present
11.	<b>Tannin</b>	Greenish colour appear	Absent
	a) Lead acetate Test	Reddish brown bulky ppt. are formed	Absent

## 2 Antibacterial assay

50% methanolic extract of *G. sylvestre* at the different concentration i.e. 25%, 50%, 75%, 100% exhibited antibacterial against *Bacillus subtilis*, *Staphylococcus aureus* but the lower activity was observed *E. coli* and *Pseudomonas aeruginosae* at 100%) the Minimum inhibitory concentration (MIC) of Gym. Sylvestre against gram positive bacteria i.e. *Bacillus subtilis*, *Staphylococcus epidermidis*, *Staphylococcus aureus* was 25% but against gram negative bacteria Zone of inhibition was observed only in 100% extract . Other concentration i.e. 25%, 50 % and

**Table:2 Antibacterial activity of *Gym. Sylvestre* against bacterial strains**

Name of microorganisms	% Concentration of Extract [zone of inhibition(mm)]			
	25	50	75	100
<i>S.aureus</i>	16	17	16	15
<i>B.subtilis</i>	10	12	13	15
<i>E. Coli</i>	13	14	13	15
<i>Ps. aeruginosae</i>	--	--	11	12



**Figure1 (a) Zone of inhibition of *Gymnema sylvestre* extract against different strains of bacteria.**

**Table 3. Antibacterial activity of standard antibiotic (gram positive) against different bacteria.**

Name of microorganisms	Name Standard antibiotics [zone of inhibition(mm)]			
	TE	OF	AZ	PC
S.aureus	15	16	16	14
B.subtilis	14	16	18	14
S.epidermidis	14	18	17	17

TE- Tetracycline, OF- Ofloxacin, AZ- Azithromycin & PC- Piperacillin

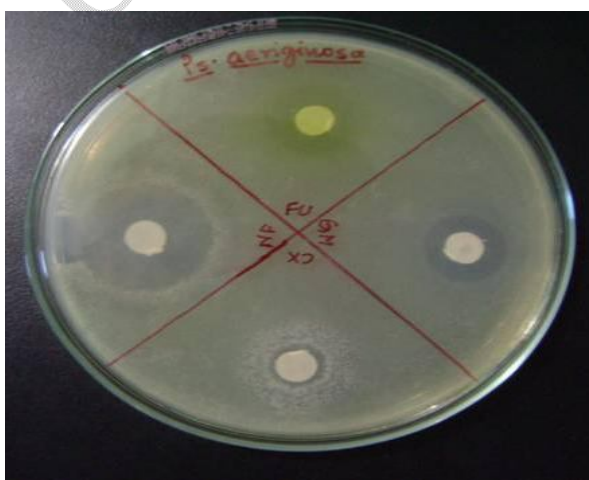
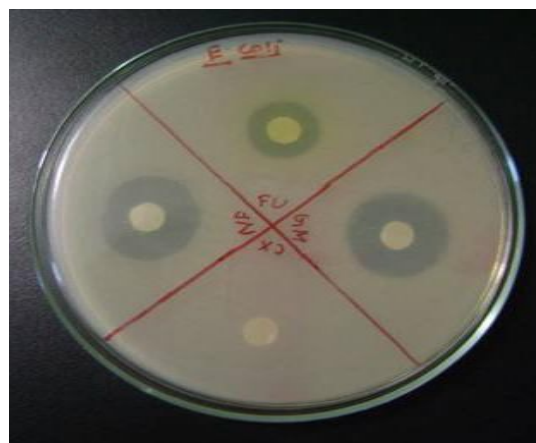
**Table 4 Antibacterial activity of standard antibiotic (gram negative) against different bacteria.**

Name of microorganisms	Name Standard antibiotics [zone of inhibition(mm)]			
	FU	GM	CX	NF
E.coli	12	16	8.0	16
Sh.flexineri	18	18	12	21
P.aeruginosa	14	13	18	20

FU- Nitrofurantoin, GM- Gentamicin, CX- Cefotaxime & NF- Norfloxacin

S. aureus – *Staphylococcus aureus*, B. subtilis – *Bacillus subtilis*, S. epidermidis – *Staphylococcus epidermidis*, E. coli – *Escherichia Coli*, Sh. Flexineri – *Shigella flexineri*

P. Aeruginosa – *Pseudomonas aeruginosae*



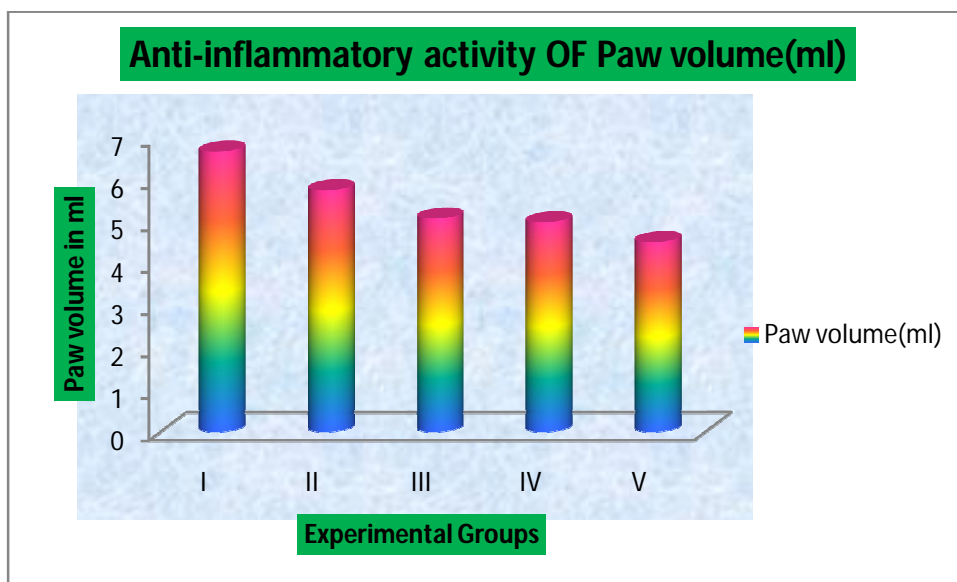
**Figure 1.( b)Zone of inhibition of standard antibacterial against different strains of bacteria**

**4 Anti-inflammatory activity-**

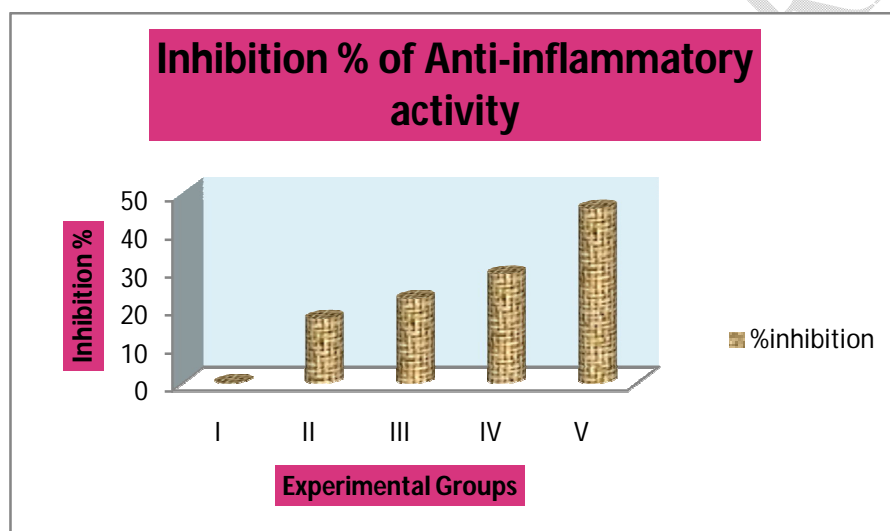
The result of anti-inflammatory activity of methanol extract of *Gymnemasylvestre* on Carrageenan induced paw edema is shown in table 4. The methanolic extract of 400mg/kg decreased the paw edema volume by 28.69% within 4 hour after administration, while standard drug decreased the paw edema volume by 46.05% when compared with the paw edema volume of control. The gymnemasylvestre extract at the dose of 200, 300, 400mg/kg produced significant reduction, when compared to the control group.

**Table 5. valuation of anti-inflammatory activity of *Gymnemasylvestre*leaves extract**

S.No.	Group	Paw volume(ml)	%inhibition
1.	Control	6.66±0.08	
2.	Gymnema sylvestre extract(200mg/kg)	5.74±0.11	16.95
3.	Gymnema sylvestre extract(300mg/kg)	5.07±0.05	22.16
4.	Gymnema sylvestre extract(400mg/kg)	4.98±0.08	28.69
5.	Diclofenac sodium(100mg/kg)	4.51±0.12	46.05



**Graph 1 Effect of *G.sylvestre* extract on Antiinflammatory activity of Paw volume(ml)**



**Graph2 Effect of *G.sylvestre* extract on inhibition % of Anti - inflammatory activity**

## DISCUSSION AND CONCLUSION

Present study showed that the extract of *Gymnemasylvestre* extract caused antimicrobial activity against gram positive and gram negative bacteria. It also showed anti inflammatory activity in mice. It is also support our finding that antimicrobial report of some investigators (David et al ,2013;Kartikeyan et al,2019;Ramlingam et al,2019 and Tahir et al 2017 ).The study is important

for scientific community because this plant is used in traditional medicine to treat various diseases. Leaves and roots of *G. sylvestris* are mainly used in India in traditional medicine as a natural treatment for diabetes as it helps to lower and balance blood sugar levels. *G. Sylvestre* helps to promote weight loss possibly through its ability to reduce cravings for sweets and control blood sugar levels. Since diabetes is spreading all over the world as an epidemic and there is no permanent treatment in allopathy therefore people are looking for alternative medicine for treatment of diabetes therefore we have undertaken to screen this plant for antimicrobial and anti-inflammatory activities. We have already reported the anticarcinogenic activity of this plant (Sonam and Agrawal)

Disclaimer (Artificial intelligence)

Option 1:

Author(s) hereby declare that NO generative AI technologies such as Large Language Models (ChatGPT, COPILOT, etc) and text-to-image generators have been used during writing or editing of manuscripts.

Option 2:

Author(s) hereby declare that generative AI technologies such as Large Language Models, etc have been used during writing or editing of manuscripts. This explanation will include the name, version, model, and source of the generative AI technology and as well as all input prompts provided to the generative AI technology

Details of the AI usage are given below:

- 1.
- 2.
- 3.

## Reference

1. Agrawal, R.C. Pharmacological studies of *Moringa oleifera*. Asian Journal of current research 2021a, Vol 6 (3) 37-41

2. Agrawal, R.C. Antibacterial and Phytochemical studies of *Psidium guajava* leaf extracts , International Journal of Research- Granthalaya, 2021b ,9 (11) 1-4.
3. Agrawal,R.C. Phrmacological studies of *Azadirachta indica* leaves extract. Open access research journal of Life Sciences.2022, 04 (01), 044-050.
4. Soni,,S and Agrawal R C : Antiproliferative effect of *Gymnemasylvestre* in in Vitro assays. International Journal of Research Publications. Vol 15 (1) October 2018
5. Bhatia AL, Raka K, Gulshan V, Sharma KV, Sharad V, Megha J (2008). Radio protective role of Gymnemic acid on mice: Study on Hepatic Biochemical Alterations. Asian J. Exp.Sci; 22(3):427-32.
6. Dateo G.P.and Long L. (1973), Gymnemic acid, the antisaccharine principle of *Gymnemasylvestre* Studies on isolation and heterogeneity of gymnemic acid A1. J. Agric. Food Chem.;21:899–903.
7. David, B. C., and Sudarsanam, G. (2013). Antimicrobial activity of *Gymnemasylvestre* (Asclepiadaceae). J. Acute. Dis. 2 (3), 222–225. doi: 10.1016/S2221-6189(13)60131-6
8. Gloria Y Yeh, David M. Eisenberg, Ted J.
9. Kaptchuk, Russell S. Phillips (2003). Systematic Review of Herbs and Dietary Supplements for

Glycemic Control in Diabetes. *Diabetes Care*; 26 (4): 1277-1294.

10. Jitender KM, Manvi FV, Alagawadi KR and Noolvi M (2008): Evaluation of anti-inflammatory activity of *Gymnemasylvestre* leaves extract in rats. *Int. J. Green Pharmacy*: 114-115.

11. Jitender KM, Manvi FV, Nanjwade BK, Alagawadi KR and Sanjiv S (2009): Immuno-modulatory activity of *Gymnemasylvestre* leaves extract on in vitro human neutrophils. *J. Pharmacy Res*; 2(8):1284-6.

12. Kanetkar, P.V. Laddha, K.S. Kamat. M.Y (2004). Gymnemic acids: A molecular perspective of its action on carbohydrate metabolism. Poster presented at the 16th ICFOST meet organized by CFTRI and DFRL, Mysore, India.

13. Karthikeyan, M., Ahamed, A. J., Karthikeyan, C., and Kumar, P. V. (2019). Enhancement of antibacterial and anticancer properties of pure and REM doped ZnO nanoparticles synthesized using *Gymnemasylvestre* leaves extract. *SN Appl. Sci.* 1 (4), 355. doi: 10.1007/s42452-019-0375-x

14. Kiranmai M, Kazim SM and Ibrahim M (2011). Combined wound healing activity of *Gymnemasylvestre* and *Tagetes erecta* Linn. *Int. J. Pharmaceu. Appl.*; 2(2):135-140.

15. Luo H (1999). Possible participation of NO and EDHF in the 1. Agrawal, R.C. Pharmacological studies of *Moringa oleifera*. *Asian journal of current Research* .2021, Vol. 6 (3) 37-41.

UNDER PEER REVIEW

13. Omman, E., Shenoy, B.D., Vdupa, N., Kamath, R., Umadevi, P. (1999): Antitumour efficiency of cyclodextrin complexed and noisome encapsulated plumbagin in mice bearing melanoma B16F1. *Pharma pharmacol. Communication*, 5: 281-285.
14. Owens, C.W.I and belcher, R.V. (1965). Calorimetric micro method for the determination of glutathione. *Biochem. J.* 94(3): 705-711.
15. Paliwal, R Kathori, S Upadhyay. (2009). *B. Ethno-Med*, 3(2), 133-135.
16. Preuss, H.G. Bagchi,(2004). D Bagchi, M.. Rao, C.V. Dey, D.K Satyanarayana. S. *Diabetes ObesMetab*, ,6(3), 171-80.
17. Puratchimani V and Jha S (2004b). HPTLC Standardization of *Gymnemasylvestre*R. Br. Using gymnestrogenin as reference, *Ind. J. Pharma. Sci.*, Vol. 66, pp. 164-166.
18. Rachh PR, Patel SR, Hirpara HV, Rupareliya MT, Rachh MR, Bhargava AS, Patel NM and Modi DC (2009): In-vitro evaluation of antioxidant activity of *Gymnemasylvestre*R.Br. leaf extract. *Rom. J. Biol. Plant Biol.*; 54(2):141-8.
19. Ramalingam, R., Dhand, C., Leung, C. M., Ong, S. T., Annamalai, S. K., Kamruddin, M., et al. (2019). Antimicrobial properties and biocompatibility of electrospun poly-ε-caprolactone fibrous mats containing *Gymnemasylvestre* leaf extract. *Mat. Sci. Eng.* 98, 503–514. doi: 10.1016/j.msec.2018.12.135
20. Sinsheimer J.E., Subba R.G. (1970), Mc Ilhenny H.M. Constituents from *Gymnemasylvestre* Leaves V: Isolation and preliminary characterization of Gymnemic acids. *J. Pharm. Sci.*;59:622–628.

21. Srikanth AV, Sayeeda M, Lakshmi NM, Ravikumar P and Madhava RB (2010): Anti cancer activity of *Gymnemasylvestre* R.Br. Int. J. Pharmaceu. Sci. Nanotech; 3(1):897-899.
22. Tandon Pankaj, Sirohi Anita (2010). Assessment of larvicidal properties of aqueous extracts of four plants against *Culex quinquefasciatus* larvae. JJBS; 3(1):1-6..
23. Tahir, M., Rasheed, M. A., Niaz, Q., Ashraf, M., Anjum, A. A., and Ahmed, M. U. (2017). Evaluation of antibacterial effect of *Gymnemasylvestre* R.Br. species cultivated in Pakistan. Pak. Vet. J. 37 (3), 245–250.

UNDER PEER REVIEW