

## Arbuscular mycorrhizal fungi as a biocontrol agent for angular leaf spot disease of common beans (*Phaseolus vulgaris* L.)

### Abstract

Angular leaf spot disease caused by *Phaeoisariopsis griseola* is the most important disease which caused yield losses up to 80 % of common bean. This study aims to induce natural defense of common bean against angular leaf spot disease by mycorrhization. The samples of *Phaeoisariopsis griseola* were collected in the field of 02 different agro-ecological zones considered as major bean production area in Cameroon. The *Phaeoisariopsis griseola* were isolated on PDA solid medium, and identified based on morphological. A pot experiment was carried out using a bifactorial device. The first factor was two varieties of common bean (GLP 195-C and PNG). The second factor consisted of eight treatments, namely T0: absolute control, T1: mycorrhizal treatment with *Acaulospora tuberculata*, T2: mycorrhizal treatment with *Gigaspora gigantea*, T3: mycorrhizal treatment with *Entrophospora infrequens*, T4: Terazeb synthetic fungicide treatment (positive control), T5: mycorrhizal treatment with *Acaulospora tuberculata* and *Gigaspora gigantea* combination, T6: mycorrhizal treatment with *Acaulospora tuberculata* and *Entrophospora infrequens* combination, T7: mycorrhizal treatment with combination of *Gigaspora gigantea* and *Entrophospora infrequens*. Incidence, severity of angular leaf spot disease and biochemical parameters were assessed. The results showed that pots treated with the mycorrhizae *Entrophospora infrequens*, *Gigaspora gigantea*, *Acaulospora tuberculata* and combinations of mycorrhizae *Acaulospora tuberculata* and *Gigaspora gigantea*, *Acaulospora tuberculata* and *Entrophospora infrequens*, *Gigaspora gigantea* and *Entrophospora infrequens* contributed significantly to improved amino acid content from 44% to 70%, proline content from 20% to 33%, total phenol content from 36% to 60%, protein content from 16% to 41%, flavonoid content from 27% to 82%, tannin content from 60% to 298%, polyphenoloxidase content from 15% to 74% and peroxidase content from 31% to 109% compared with the control in the two common bean varieties. Similarly, the mycorrhizae treatments and the mycorrhizae combination significantly reduced the development of angular leaf spot disease by 20 to 80% compared with the control in both common bean varieties. This work shows that Arbuscular Mycorrhizal Fungi made a significant contribution to reducing the development of angular leaf spot disease in the pots while improving common bean grain yield.

**Key words:** *Phaseolus vulgaris*, angular leaf spot, Arbuscular Mycorrhizal Fungi, bioprotector.

### 1. INTRODUCTION

Angular leaf spot disease is the largest and most widespread disease affecting common bean production in sub-Saharan Africa (Wagara et al., 2011). The damage caused by this disease varies from 70% to 80% in Cameroon (Djeugap et al., 2014; Sanyang et al., 2021). It is caused by *Phaeoisariopsis griseola* (Sacc.) Ferraris, a cryptogam widely distributed in the tropical and subtropical regions of Central and South America, and East and Central Africa. This fungal agent grows under varying humidity and temperatures between 18 and 25°C (Schwartz et al., 2005). To combat the development of the angular spot disease of common beans, farmers use chemical fungicides (mancozeb, terazeb etc.). The intensive and systematic use of chemical fungicides causes environmental damage (groundwater and air pollution, presence of residues in soil and plants) and is harmful to both pesticide producers and consumers. The development of sustainable practices as an alternative for crop management to reduce the use of pesticides and chemical fertilizers is an ongoing global challenge in

agriculture (Pretty and Bharucha, 2018). Biological control, based on the use of the potential of beneficial symbiotic microorganisms that are antagonistic to plant pathogens, could be a promising solution to improve plant nutrition and resistance and tolerance to biotic stress (Pozo *et al.*, 2020). A preventive strategy is to activate the natural defenses of plants by using beneficial microbes such as arbuscular mycorrhizal fungi as inoculants, which deserves increasing interest (Ngonkeu, 2009). Arbuscular mycorrhizal fungi belonging to the phylum Glomeromycota are widely distributed in natural ecosystems and colonize the roots of more than 80% of plant species, including major crops (Smith and Smith 2011). The plants form a mutualistic association with the arbuscular mycorrhizal fungus that benefits both partners. Arbuscular mycorrhizal fungi improve the uptake of water and nutrients, especially phosphorus in plants and also increase the phenotypic and metabolic resistance of plants to biotic and abiotic stress. In return, arbuscular mycorrhizal fungi benefit from the carbohydrates synthesized by the plant (Martínez-Medina *et al.*, 2014;2011 ; Cameron *et al.*, 2013;2013 ; Abdelrahman *et al.*, 2016;2016 ; Sanchez-Bel *et al.*, 2018;2018 ; Ferrol *et al.*, 2019;2019 ; Campo *et al.*, 2020; Mitra *et al.*, 2021; Rivero *et al.*, 2021). Indeed, mycorrhization protection against disease has been associated with the accumulation of phenols, phytoalexins and the induction of the activity of specific isoforms of hydrolytic enzymes such as chitinases and 1,3 glucanases in mycorrhizal roots (Li H.Y. *et al.*, 2006). Numerous studies have proven that arbuscular mycorrhizal fungi (AMF) enhance plant resistance against various pathogens (Harrier and Watson, 2004;2004 ; Pozo *et al.*, 2005;2005 ; Bi *et al.*, 2007). Abdel-Fattah *et al.*, 2011 demonstrated that *Glomus* and *Gigaspora* sp initiate cell wall defense related to protein production, enzymatic activity, and increased phenolic compound production of common bean against *Ralstonia solani*. This study aims to induce the natural defence of common bean against angular leaf spot disease through mycorrhization.

## 2. MATERIALS AND METHODS

### 2.1. Characterization of Study site

The pot experiment was carried out in the Regional Laboratory of Biological Control and Applied Microbiology of IRAD during the period from March 2022 to June 2022.

### 2.2. Soil sampling and analyses

Composite soil samples were sampled from 0 to 20 cm in three replicates and transferred to the laboratory for chemical analyses. The soil was air dried, sieved to pass through 1-mm mesh and the chemical properties analyzed in 4 analytical replicates. The soil-pH was measured in aqueous soil suspension (1:2.5, w:v) using the electronic pH meter type CG822 after agitating the sample for 16 h. The soil available-P was determined by the Bray-I chemical extraction method. Briefly, 30 ml of Bray-I extractant was added to 3 g of air-dried soil sample and the content (soil solution ratio 1:10) was shaken for 5 min and filtered, and the P concentration was measured after the colorimetric change (Murphy *et al.*, 1962). Total N concentration was measured in a subsample of 0.5 g after digestion with concentrated H<sub>2</sub>SO<sub>4</sub> at 500 °C using a stainless-steel pressure digestion system (BERGHOF Products + Instruments GmbH Labor-Technik Eningen, Germany). Organic C was determined by chromic acid digestion and a spectrophotometric procedure (Pauwels *et al.*, 1992). The N concentrations was determined using a spectrophotometer (Jenway 6310 Scanning Visible Range Spectrophotometer 230 V, Clarkson Laboratory, USA), according to the method described by Novozamsky *et al.*, 1983.

### 2.3. Biological materials

Two common bean varieties; GLP 195-C and PNG were obtained from the Institute Agricultural and Development Research (IADR) of Dschang were used. The bean variety GLP 195-C has a cycle from 80 to 90 days and the seeds are spotted red color. The variety also originated from CIAT with a yield range between 2 and 2.5 ton/ha. The variety PNG is a glossy black colored seeds, growing cycles of about 90 days, and a yield range between 1.5 and 2.5 ton/ha. The mycorrhizal inoculum *Acaulospora tuberculata*, *Gigaspora gigantea*, *Entrophospora infrequens* isolates from the rhizosphere of the two sites (Olamze and Soa). The inoculum contained spores and colonized Sorghum root fragments at a concentration of 50 propagules per cubic centimeter. Chemical material used was the Terazeb 80 WP which is a contact and systemic fungicide and content 80 % of maneb and was applied at the recommended dose : 10-15 g/l. the spores de *Phaeoisoriopsis griseola* agent causal de la tache angulaire were used.



Fig.1. Mycorrhizal inoculum

## 2.4. Methods

### 2.4.1. Experimental device in pots

The experimental device used in pots was a bifactorial device. The first factor was two varieties of common bean (GLP 195-C and PNG). The second factor consisted of eight treatments, namely T0: absolute control, T1: mycorrhizal treatment with *Acaulospora tuberculata*, T2: mycorrhizal treatment with *Gigaspora gigantea*, T3: mycorrhizal treatment with *Entrophospora infrequens*, T4: Terazeb synthetic fungicide treatment (positive control), T5: mycorrhizal treatment with *Acaulospora tuberculata* and *Gigaspora gigantea* combination, T6: mycorrhizal treatment with *Acaulospora tuberculata* and *Entrophospora infrequens* combination, T7: mycorrhizal treatment with combination of *Gigaspora gigantea* and *Entrophospora infrequens*. Dried soil from the olamze and soa sites was sieved using a 4 mm sieve and mixed with river sand (soil-to-sand ratio 3:3:1 v/v). The substrate thus prepared was autoclaved (121°C, 1 h) twice. The 5-litre pots were filled with disinfected substrate at a rate of 3.5 kg/pot. Half of the pots were given twice the AMF inoculum and seedbed at the beginning and watering the pots 14 days after planting at a dilution of 5 mL/L of water. Four sterilized healthy seeds of each common bean variety were sown in the pots. All the pots were kept outside in natural conditions (daytime temperature 25°C, night temperature 20°C, photoperiod 16h) and watered if necessary. After 4 weeks of AMF inoculation, leaf infestation was done by spraying the inoculum of the pathogen (*Phaeoisoriopsis griseola*) on the leaves. The chemical fungicide used in this study as a positive control was terazeb (80 WP). Three applications were applied as soon as the first symptoms of the disease appeared. The applications were made in the morning between (8am-10am). 100 to 150g of Terazeb 80 WP was poured into a 15 l sprayer fill half with water, shake and add water up to 15 liters and spray on the leaves of the plants fungicide pots.

#### 2.4.2. Identification of foliar disease-causing agents during growth development

The identification of *Phaeoisariopsis griseola* (Sacc.) Ferraris, causal agent of angular leaf spot achieved according to methodology used by Riviera et al. (2006). The leaves showing the symptoms of the disease were collect in two agro-ecological zones where the common bean is the most cultivated in Cameroon, namely, the Western Highlands (Dschang) and the bimodal rainfall forest zone (Yaoundé). The leaves were washed in tap water then cut into 5mm fragments at the front of the growth of the necrose. The fragment were successively disinfected using a 0.5 % sodium hydrochlorite solution for 3 minutes and 70 % ethanol for 3 minutes. Infected fragment were incubated on PDA during three days. Microscopic identification was carried out using the optic microscope.

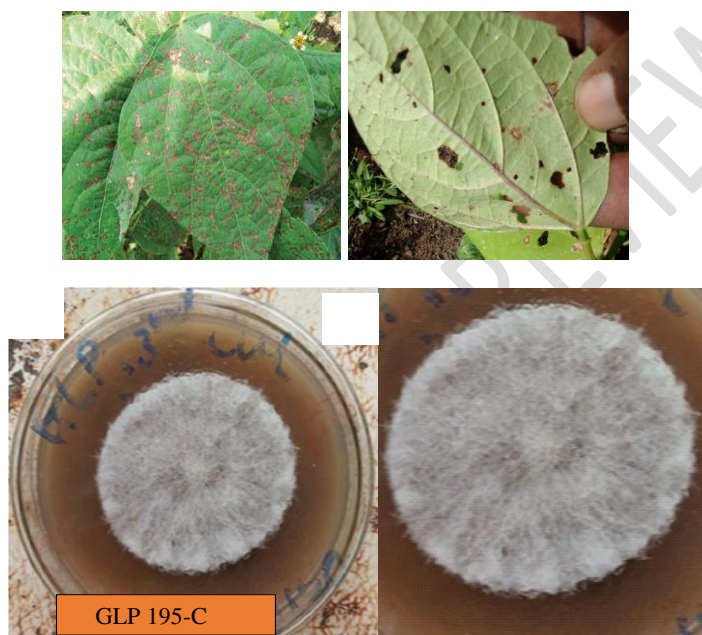


Fig. 2. Identification of the *Phaeoisariopsis griseola* (Sacc.) Ferraris.

#### 2.4.3. Quantification of angular leaf spot disease in the pots

The quantification of angular leaf spot disease of common bean is based on incidence and severity. Data were collected every 7 days after 35 days after sowing. The disease was identified in the pot by a visual diagnosis based on precise observations of the symptoms and their evolution in time and space.

##### 2.4.3.1. Evaluation of the incidence of angular leaf spot disease

Diseased plants were counted every week after 35 days after sowing on a sample of 10 plants per treatment. Incidence was assessed using the Tchumakov and Zaharova (1990) formula;

$$I(\%) = \frac{N_i}{N_t} \times 100$$

Where: I = Incidence in percentage (%); Ni = Number of infected plant; Nt = total number of plant

#### 2.4.3.2. Assessment of the severity of angular leaf spot disease

This was determined by measuring each week after 35 days after sowing on a sample of 10 plants per treatment. The formula of Tchumakov and Zaharova (1990) was used to express the severity values:

$$S = \sum (axb)/N$$

Where: S = severity (%);  $\sum (a.b)$  = sum of the number of diseased plants (a)  $\times$  corresponding degree of infection (b) in %; N = total number of diseased plants. The scale used for the degree of infection (b) is that proposed by Wangungu *et al.*, (2011) or 0 = 0% infection of the plant; 1 = infection covering between 1-15% of plant; 2 = infection between 16 - 40% of plant; 3 = infection covering between 41 - 75%; 4 = infection covering 76 - 100% of plant.

#### 2.4.4. Assessment of mycorrhizal colonisation rate

The modified method of Kormanik and McGraw (1982) was used. Roots were immersed in 5% potash (KOH) in labelled test tubes and heated in a water bath for 30 minutes at 90°C, then washed three times with tap water to remove the potash. 1% hydrochloric acid (HCl) was added to the roots and left to soak for 1 hour. The hydrochloric acid was then removed and the dye (lactic acid-glycerol-water) in proportions of 4-1-1 plus 0.05% methylene blue was prepared and added to the tubes. The tubes were heated to 90°C for 30 minutes in a water bath. After heating, the dye was removed and the roots were rinsed three times with tap water. The bleach (lactic acid-glycerol-water) was introduced into the tubes and left to stand for at least 24 hours. Ten root fragments of approximately 1 cm were mounted between slide and coverslip. The mounting was repeated three times for each sample. Observation was carried out using an OLYMPUS JAPAN BH-2 electron microscope with an objective of 10. The number of fragments colonised by fungi out of the 30 per sample was noted.

The rate of mycorrhizal root colonisation (RMC) of the plants was assessed by calculating the percentage of root colonisation using the formula of Mpemboura Nsangou Salamatou, 2010:

$$RMC (\%) = \frac{Nc}{No} \times 100$$

Where; RMC = Rate of Mycorrhizal root Colonisation in percentage (%); Nc = Total number of root fragments colonized; No = Total number of root fragments observed

#### 2.4.5. Assessment of biochemical parameters

##### 2.4.5.1. Extraction and determination of amino acids, proline and phenol

Total amino acids and proline were determined from an ethanoic extract. ~~One gram~~One-gram fresh bean leaves plants was ground in 5 mL of 80 % ethanol and centrifuged at 5000 ppm at 4°C for 15 min. The recovered supernatant was used for the assay. Total amino acids and proline were determined by the ninhydrin reaction according to the method described by (Yemm and Cocking, 1955). Total amino acids and proline underwent oxidative denaturation in the presence of ninhydrin, with the release of CO<sub>2</sub>, NH<sub>3</sub> and an aldehyde molecule. The reaction medium consisted of 50  $\mu$ L of extract, 0.5 mL of citrate buffer (0.2 M, pH: 5), 1 mL of 80% ethanol and 1 mL of ninhydrin reagent (1% ninhydrin and 0.06% KCN in acetone). The resulting mixture was placed in a boiling water bath for 15 min and then cooled in melting ice. The absorbance of the complex formed was read at 570 nm (for amino acids) and 440 nm (for proline) using a spectrophotometer (Jenway 6310 Scanning Visible Range Spectrophotometer

230V, Clarkson Laboratory, USA). Amino acid and proline content were assessed respectively by reference to a calibration curve performed with pure glycine and proline. Levels were expressed in mg/g fresh matter (FM).

Total phenol concentration was determined by Folin–Ciocalteu method (Folin and Denis, 1915). Half mL of extract was added to 3mL water, 0.5 mL Na<sub>2</sub>CO<sub>3</sub> (20 %) and shake for 3 minutes. Subsequently, 0.5 mL of Folin - Ciocalteu reagent was added and the mixture transferred to a water bath set at 40 °C and incubated for 30 min and the absorbance read at 760 nm using a spectrophotometer (Jenway 6310 Scanning Visible Range Spectrophotometer 230V, Clarkson Laboratory, USA). The concentration of phenol was calculated using gallic acid for a standard curve and expressed in milligrams per gram of fresh leaf matter.

#### 2.4.5.2. Extraction and determination of phenolic compounds

The flavonoid content of the extracts was determined according to the method described by Michel, (2011). The operation consisted of adding 1 ml of extract to 1 ml of 2% aluminium chloride (AlCl<sub>3</sub>) (prepared in methanol). The resulting mixture was placed in the dark for 10 minutes before the absorbance reading at 450 nm. The results obtained were expressed in mg equivalent of quercetin per gram of fresh material. These concentrations were determined by reference to the calibration curve performed with quercetin prepared in methanol. The total tannin content was determined according to the protocol described by Ndhkala *et al.*, 2007. 0.5 mL of each extract was carefully transferred to a 10 mL test tube, 3 mL of the buthanol-HCL reagent (95:95 :5) and 0.2 mL of ferric reagent were added. The mixture was stirred and incubated in a water bath at 100°C for 1 hour. The absorbance was read against a white made making a similar mixture without incubation. The following formula developed by Porter *et al.*, 1986 gives the tannin content, expressed in mg of gallic acid equivalent/100g of fresh matter according to

$$\% \text{ Tannins} = \frac{\text{DO} \times 78.26 \times \text{dilution factor}}{\text{Fresh sample mass}} \times 100$$

#### 2.4.5.3. Determination of the enzymatic activity of polyphenoloxidases (PPO) and peroxidases (POX)

The determination of the POP was done according to the method described by Mayer *et al.* (1965) modified. In each tube and in the following order, we put 2 ml of the 0.1M phosphate buffer, pH 6.5 and then 10 µl of the enzymatic extract. The reaction was triggered by adding 10µl of the catechol solution (substrate) 0.2 M, the density reading was made after 3 min at 410 nm against a blank in which the extract was replaced by phosphate buffer. For each extract, three readings were performed and the PPO activity is expressed in ΔDO.mn-1.g-1 of PF.

The determination of peroxidases was done according to the method described by Thorpe *et al.* (1978). The reaction medium consisted of 1 ml of 0.2% H<sub>2</sub>O<sub>2</sub> (V/V) followed by 1 ml of 1% guaiacol (V/V) and 2 ml of phosphate buffer, 0.06 M, pH 6.8. In each test tube, 4 ml of the reaction medium, 10 µl of extract, was introduced. After homogenization, the enzymatic activity of POX was determined by following the formation of tetraguaiacol from guaiacol. The absorbance was read at 420 nm on the spectrophotometer against a blank in which the extract was replaced by the extraction buffer. Three readings were taken per sample. The POX content is expressed in ΔDO.mn-1.g-1 of PF (molar extinction coefficient of peroxidases ε = 26.6 M.cm-1).

#### 2.4.5.4. Determination of protein content

The determination of the protein content was evaluated after determining the total nitrogen content and multiplying the total nitrogen content by a factor of 6.25. Total nitrogen was

determined using the classical Kjeldhal method (AFNOR, 1984) followed by the colorimetric assay of (Devani, Shishoo and Suhagia, 1989).

#### **Nitrogen dosing**

0.2 ml of mineraliserate, 1.2 ml of sodium acetate solution and 1.6 ml of reactive solution (15 ml of formaldehyde + 8 ml of acetone in 77 ml of distilled water) were successively introduced into a test tube. The mixture was incubated in a water bath (97.5°C) for 15 minutes. Once cooled in a stream of cold water, the volume of the tube was supplemented to 10 ml by adding 7 ml of distilled water. The absorbance was read at 412 nm against a blank consisting of sodium acetate solutions, reactive solution, and distilled water. The calibration range of the nitrogen solution was established from a solution of ammonium sulphate 0.4 g nitrogen/ml. The amount of nitrogen was determined from the ammonium sulphate calibration curve. The calibration line equation  $y = 8.9472x$  was used to calculate the amount of nitrogen from the [formula:formula](#) :

$$X = Y \times \frac{V_t \times 100}{V_p \times m \times a}$$

$X$ : Amount of nitrogen (mg);  $Y$ : Optical density;  $V_t$  (ml): Total volume of mineralisate;  $V_p$  (ml): total volume of mineralized dosed;  $m$  (g): Mass of the mineralized sample;  $a$ : Calibration coefficient (0.006).

Protein content = N content  $\times$  6.25

#### **2.5. Data analysis**

The data collected were subjected to one-way and two-way an analysis of variance (ANOVA) using R software version 3.5.1. The comparisons of the means were performed using the Tukey HSD test with a threshold of 5%.

### **3. Results**

#### **3.1. Physico-chemical composition of the soils of the sites**

The soils of the sites are acidic because the pH is below 7. The soil of the Soa site (5.5) is more acidic compared to the soil of the Olamze site (6). The available phosphorus is low 8.12 mg/kg in the locality of Olamze and medium in the locality of Soa 45.33 mg/kg. The low nitrogen content of the soils, 1.08% in Olamze and 0.87% in Soa, is an indicator associated with the history of continuous cultivation with little or no addition of organic or inorganic fertilizers. The soils in the study area are sandy, clayey.

#### **3.2. Influence of treatments and varieties on mycorrhization parameters**

##### **Colonization rate and mycorrhization intensity**

The results obtained on the colonization rate and the intensity of mycorrhization showed significant differences ( $P < 0.0001$ ) between the treatments in the two soils. There are no significant differences between varieties and between varieties  $\times$  treatments interaction (Table I).

In pots containing Olamze sterilized soil, the highest average mycorrhizal colonization rates were obtained with the T2 (76%) and T7 (71%) mycorrhizal treatments compared to the T4 (00%) synthetic fungicide treatments and the T0 controls (00%). Similarly, the highest average mycorrhizal intensity was obtained with the T2 (14%) and T7 (15.42%) mycorrhizal treatments compared to the T4 (00%) synthetic fungicide treatments and the T0 controls (00%) in the two varieties, respectively. For pots containing sterilized Soa soil, the highest average mycorrhizal colonization rates were obtained with T2 (65.5%) and T7 (73.5%) mycorrhizal treatments compared to T4 (00%) synthetic fungicide treatments (00%) and T0 controls (00%). Similarly, the highest average mycorrhizal intensity was obtained with the T2 (11.42%), T7 (13%), T5

(12.34%) and T6 (12.48%) mycorrhizal treatments compared to the T4 (00%) synthetic fungicide treatments (00%) and the T0 controls (00%) respectively in the two varieties. The highest colonization rate and mycorrhization intensity were obtained with the T7 treatment (Table I).

Table I. Influence of AMF on the colonization rate and mycorrhization intensity of common bean roots (%).

Varieties	Treatments	Olamze		Soa	
		Colonization rate	Intensity	Colonization rate	Intensity
GLP 195-C (V1)	T0	0.00 ± 0.00 d	0.00 ± 0.00 e	0.00 ± 0.00 d	0.00 ± 0.00 e
	T1	75.66 ± 1.15 b	15.00 ± 1.50 bc	63.33 ± 2.89 c	9.17 ± 1.53 bc
	T2	83.33 ± 2.89 a	15.50 ± 1.08 ab	70.00 ± 5.00 bc	11.50 ± 1.00 bc
	T3	76.50 ± 1.32 b	15.00 ± 1.30 bc	65.00 ± 2.50 c	10.67 ± 0.58 c
	T4	0.00 ± 0.00 d	0.00 ± 0.00 e	0.00 ± 0.00 d	0.00 ± 0.00 e
	T5	76.67 ± 2.89 b	15.33 ± 1.04 ab	70.00 ± 10.00 bc	13.00 ± 1.00 ab
	T6	76.50 ± 1.32 b	14.50 ± 1.33 bc	66.67 ± 2.89 c	12.50 ± 1.00 ab
	T7	81.67 ± 2.87 a	13.50 ± 0.50 bc	78.33 ± 5.77 a	13.50 ± 0.50 a
PNG (V2)	T0	0.00 ± 0.00 d	0.00 ± 0.00 e	0.00 ± 0.00 d	0.00 ± 0.00 e
	T1	71.67 ± 2.89 c	11.17 ± 0.76 d	65.00 ± 5.00 c	11.33 ± 0.58 bc
	T2	81.67 ± 2.87 a	13.50 ± 1.00 bc	70.00 ± 5.00 bc	11.50 ± 1.00 bc
	T3	71.67 ± 2.89 c	13.00 ± 0.50 cd	65.00 ± 8.66 c	11.96 ± 1.33 cd
	T4	0.00 ± 0.00 d	0.00 ± 0.00 e	0.00 ± 0.00 d	0.00 ± 0.00 e
	T5	76.67 ± 2.89 b	15.67 ± 0.76 ab	66.67 ± 2.89 c	11.96 ± 1.00 abc
	T6	71.67 ± 2.89 c	13.50 ± 1.00 bc	66.67 ± 2.89 c	12.17 ± 1.04 abc
	T7	81.67 ± 1.32 a	17.33 ± 1.12 a	76.67 ± 2.89 ab	12.50 ± 1.00 ab
Pr (>F) V	0.949ns	0.759ns	0.963ns	0.963ns	
Pr (>F) T	< 0.0002***	< 0.0002***	< 0.0002***	< 0.0002***	
Pr (>F) VxT	0.18ns	0.370ns	0.991ns	0.222ns	

\*, p<0.05 (significant effect), \*\*, p< 0.01 (highly significant effect), \*\*\*, p< 0.001 (very highly significant effect); ns: not significant; VxT: interaction; V: Varieties; V1: GLP 195-C; V2: PNG; T: Treatments; T0: control, T1 : mycorrhizal treatment with *Acaulospora tuberculata*, T2 : mycorrhizal treatment with *Gigaspora gigantea*, T3 : mycorrhizal treatment with *Entrophospora infrequens*, T4: chemical fungicide Terazeb, T5: mycorrhizal treatment with a combination of *Acaulospora tuberculata* and *Gigaspora gigantea*, T6: mycorrhizal treatment with a combination of *Acaulospora tuberculata* and *Entrophospora infrequens*, T7: mycorrhizal treatment with a combination of *Gigaspora gigantea* and *Entrophospora infrequens*. WAS: Weeks After Sowing. Means followed by the same letter for each variety are not significantly different according to Tukey's test at the 5% threshold.

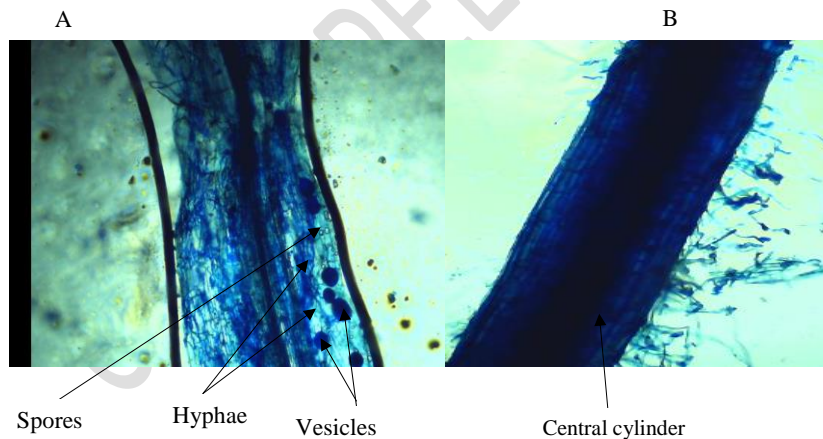


Fig. 3. Common bean roots, A: plants inoculated with AMF, B: plants without AMF inoculation

### 3.3. Influence of treatments and varieties on the epidemiological parameters of common bean

#### 3.3.1. Influence of treatments and varieties on the incidence of angular spot disease of common bean in pots

The incidence of angular spot disease varied with treatments, varieties, soil, and weather. In pots containing Olamze sterilized soils, at 5, 6 and 7 SAS, significant differences were observed between treatments ( $P < 0.0001$ ) and between varieties ( $P < 0.01$ ) in the two varieties of common bean. At 7 SAS, the composite mycorrhizal treatments T7 (13.33%), T5 (17.78%) and simple mycorrhizal treatments T2 (15.55%) recorded the lowest incidences compared to plants treated with synthetic fungicides T4 (66.67%) and control T0 (71.11%) in the GLP 195-C variety. For the PNG variety, the T7 (12.22%), T5 (12.22%) and T2 (12.67%) single mycorrhizal treatments recorded the lowest incidences compared to plants treated with synthetic fungicides T4 (46.66%) and the T0 control (66.67%) (Table II).

In pots containing sterilized Soa soils, the incidence of angular spot disease varied with treatments, varieties, and time. At 5, 6 and 7 SAS, significant differences were observed between treatments ( $P < 0.0001$ ) and between varieties ( $P < 0.01$ ). There is no significant effect between the variety-treatment interaction. At 7 SAS, the incidence of angular spot disease was higher for control T0 plants (100% and 83.33%) compared to plants treated with synthetic fungicides (83.33% and 36.67%) and composite mycorrhizal treatments T7 (16.67% and 10.00%), T5 (26.67% and 26.67%) and simple mycorrhizal treatments T2 (23.33% and 23.33%) in common bean varieties GLP 195-C and PNG. PNG (29.39%) had the lowest incidence compared to GLP 195-C (37.50%).

Table II. Influence of treatments and variety on the incidence of angular spot disease of common bean in pots (%).

Varieties	Treatments	Olamze			Soa		
		5 SAS	6 SAS	7 SAS	5 SAS	6 SAS	7SAS
Variete GLP 190-C (V1)	T0	33.33±5.24 a	53.33±3.34 a	71.11±7.69 a	40.00±3.33 a	66.67±3.55 a	100±5.01 a
	T1	0 e	<del>47.78±17.78±</del> 1.92 de	21.11±3.58 ef	0 c	26.67±3.04 d	36.67±4.05 d
	T2	0 e	12.67±1.33 e	15.55±2.53 ghi	0 c	6.67±1.92 g	23.33±2.50 fgh
	T3	0 e	17.78±2.58 de	33.33±4.87 d	0 c	13.33±1.92 f	36.67±4.50 d
	T4	12.22±2.5 c	18.89±2.70 d	66.67±3.00 b	23.33±2.50 b	46.67±3.15 b	<del>83.33±83.33±</del> 2.50 b
	T5	0 e	6.67± <del>1±</del> 1.73 f	17.78±3.58 fgh	0 c	10.00±2.50 fg	26.67±4.00 efgh
	T6	0 e	16.67±1.15 de	21.11±2.50 ef	0 c	13.33±3.00 f	33.33±3.58 def
Variete PNG (V2)	T0	24.44±2.15 b	34.44±3.92 b	66.67±3.33 b	34.56±1.84 a	46.67±4.05 b	83.33±5.58 b
	T1	0 e	12.67±3.09 e	16.67±3.60 fgh	0 c	18.89±1.92 ef	20.00±2.29 gh
	T2	0 e	6.67±1.73 f	12.67±1.33 i	0 c	6.67±3.04 g	23.33±2.50 fgh
	T3	0 e	16.67±3.58 de	23.33±2.50 e	0 c	10.00±3.04 fg	26.67±3.58 efg
	T4	6.67±1.92 d	23.33±2.50 c	<del>46.66±46.66</del> ±3.20 c	23.33±2.58 b	36.67±2.50 c	46.67±3.00 c
	T5	0 e	6.67±1.92 f	12.67±2.15 i	0 c	13.33±2.76 f	26.67±3.58 efgh
	T6	0 e	6.67±1.73 f	17.78±3.58 fgh	0 c	6.67±1.92 g	23.33±2.50 fgh
T7	0 e	6.67±1.92 f	12.67±2.15 i	0 c	<del>6.67±6.67±</del> 0.19 g	10.00±2.00 i	
Pr (>F) V	< 0.01*	< 0.003*	< 0.03*	< 0.03*	< 0.03*	< 0.01*	
Pr (>F) T	< 0.0002***	< 0.0002***	< 0.0002***	< 0.0002***	< 0.0001***	< 0.0002***	
Pr (>F) VxT	< 0.3828ns	< 0.0009***	< 0.0001***	0.2776 ns	0.4099 ns	0.2222 ns	

\*:  $p < 0.05$  (significant effect), \*\*:  $p < 0.01$  (highly significant effect), \*\*\*:  $p < 0.001$  (very highly significant effect); ns: not significant; VxT: interaction; V: Varieties; V1: GLP 195-C; V2: PNG; T: Treatments; T0: control, T1: mycorrhizal treatment with *Acaulospora tuberculata*, T2: mycorrhizal treatment with *Gigaspora gigantea*, T3: mycorrhizal treatment with *Entrophospora infrequens*, T4: chemical fungicide Terazeb, T5: mycorrhizal treatment with a combination of *Acaulospora tuberculata* and *Gigaspora gigantea*, T6: mycorrhizal treatment with a combination of *Acaulospora tuberculata* and *Entrophospora infrequens*, T7: mycorrhizal treatment with a combination of *Gigaspora*

*gigantea* and *Entrophospora infrequens*. WAS: Weeks After Sowing. Means followed by the same letter for each variety are not significantly different according to Tukey's test at the 5% threshold.

### 3.3.2. Influence of treatments and varieties on the severity of angular spot disease of common bean in pots

In pots containing Olamze sterilized soils, significant effects were observed between varieties ( $P < 0.01$ ), between treatments ( $P < 0.0001$ ) and between varieties x treatments ( $P < 0.0001$ ) in the two varieties of the 5, 6 and 7 SAS common bean. At 7 SAS, the severity of angular spot disease was higher for control plants (30.89%) compared to plants treated with synthetic fungicides (15.17%) and mycorrhizal treatments T7 (6.50%), T2 (7.83%) and T5 (9.17%) in common bean variety GLP 195-C. For PNG, the severity of angular spot disease was higher in control plants (21.5%) compared to plants treated with synthetic fungicides (8.50%) and mycorrhizal treatments T7 (5.33%), T2 (5.83%) and T5 (6.50%). The PNG variety (12.55%) recorded the highest severity compared to the GLP 195-C variety (7.70%).

In pots containing sterilized Soa soils, significant effects were observed between varieties ( $P < 0.05$ ) and between treatments ( $P < 0.05$ ) at 5 and 6 SAS. There is no significant effect between variety-x-treatment interaction in the two varieties of the 5 and 6 SAS common bean. At 7 SAS, plants inoculated with T7 (9.83% and 8.75%), T2 (10.16% and 9.67%) and T5 (11.83% and 10.17%) mycorrhizae recorded the lowest severities compared to plants treated with T4 synthetic fungicides (17.50% and 15.83%) and control T0 (31.33% and 24.77%) in common bean varieties GLP 195-C and PNG. GLP 195-C (16.79%) was the most affected by angular spot disease compared to PNG (15.17%).

Table III. Influence of treatments and varieties on the severity of angular spot disease of common bean in pots.

		Severity (%)						
		Olamze			Soa			
Varieties	Treatments	5 SAS	6 SAS	7 SAS	5 SAS	6 SAS	7SAS	
GLP 190 C (V1)	T0	15.50 ± 0.58 a	20.33 ± 3.27 a	<del>30.89</del> 30.89 ± 2.45 a	21.43 ± 2.61 a	26.67 ± 1.25 a	31.33 ± 1.53 a	
	T1	0 d	5.83 ± 1.58 cde	11.83 ± 1.58 d	0 e	12.67 ± 1.05 cde	16.50 ± 0.87 c	
	T2	0 d	3.16 ± 0.63 ef	<del>7.83</del> 7.83 ± 1.15 fg	0 e	<del>5.33</del> 5.33 ± 1.50 ij	10.16 ± 0.29 def	
	T3	1.91 ± 0.52 c	<del>4.83</del> 4.83 ± 1.58 def	10.50 ± 1.86 de	0 e	12.50 ± 0.76 cde	12.67 ± 0.76 cde	
	T4	<del>5.50</del> 5.50 ± 2.52 b	<del>12.50</del> 12.50 ± 2.58 b	<del>15.17</del> 15.17 ± 2.00 c	3.52 ± 0.58 d	14.83 ± 1.26 c	17.50 ± 2.05 c	
	T5	0 d	3.70 ± 0.58 ef	<del>9.17</del> 9.17 ± 0.58 ef	0 e	10.83 ± 1.52 def	11.83 ± 0.57 def	
	T6	1.33 ± 1.15 c	<del>4.50</del> 4.50 ± 1.50 def	10.50 ± 1.52 de	0 e	11.33 ± 1.89 def	12.50 ± 0.87 de	
	T7	0 d	2.33 ± 1.04 f	6.50 ± 1.00 gh	0 e	6.67 ± 1.04 hi	9.83 ± 0.58 ef	
PNG (V2)	T0	<del>5.50</del> 5.50 ± 2.70 b	11.67 ± 1.04 b	21.5 ± 1.32 b	17.37 ± 1.03 b	21.33 ± 1.04 b	24.77 ± 5.15 b	
	T1	0 d	<del>5.16</del> 5.16 ± 0.58 def	7.22 ± 0.63 fg	0 e	10.67 ± 2.25 ef	14.17 ± 1.52 cde	
	T2	0 d	2.83 ± 0.58 f	5.83 ± 0.58 gh	0 e	<del>4.83</del> 4.83 ± 1.00 jk	9.67 ± 1.15 ef	
	T3	0 d	3.50 ± 0.87 ef	6.91 ± 1.23 gh	0 e	6.50 ± 2.02 hi	10.17 ± 1.17 def	
	T4	4.88 ± 0.76 bc	7.41 ± 1.59 c	8.50 ± 1.58 ef	7.33 ± 0.58 cd	11.67 ± 1.75 def	15.83 ± 0.58 cd	
	T5	0 d	3.83 ± 0.76 ef	6.50 ± 0.76 gh	0 e	6.33 ± 0.76 hi	10.17 ± 1.25 de	
	T6	0 d	4.50 ± 1.00 def	6.50 ± 1.00 gh	0 e	7.67 ± 2.02 gh	11.83 ± 1.44 cde	
	T7	0 d	2.75 ± 0.90 f	<del>5.33</del> 5.33 ± 1.52 h	0 e	3.50 ± 0.50 k	8.75 ± 1.00 f	
Pr (>F) V		< 0.003**	< 0.001**	< 0.01*	< 0.01*	< 0.04*	0.295ns	

Pr (>F) T	< 0.0005**	< 0.0006***	< 0.0004***	< 0.0001***	< 0.0001***	< 0.0001***
Pr (>F) VxT	< 0.0001***	< 0.0001***	< 0.0001***	0.0915ns	0.4652ns	< 0.001**

\*, p<0.05 (significant effect), \*\*, p< 0.01 (highly significant effect), \*\*\*, p< 0.001 (very highly significant effect); ns: not significant; VxT: interaction; V: Varieties; V1: GLP 195-C; V2: PNG; T: Treatments; T0: control, T1: mycorrhizal treatment with *Acaulospora tuberculata*, T2: mycorrhizal treatment with *Gigaspora gigantea*, T3: mycorrhizal treatment with *Entrophospora infrequens*, T4: chemical fungicide Terazeb, T5: mycorrhizal treatment with a combination of *Acaulospora tuberculata* and *Gigaspora gigantea*, T6: mycorrhizal treatment with a combination of *Acaulospora tuberculata* and *Entrophospora infrequens*, T7: mycorrhizal treatment with a combination of *Gigaspora gigantea* and *Entrophospora infrequens*. WAS: Weeks After Sowing. Means followed by the same letter for each variety are not significantly different according to Tukey's test at the 5% threshold.

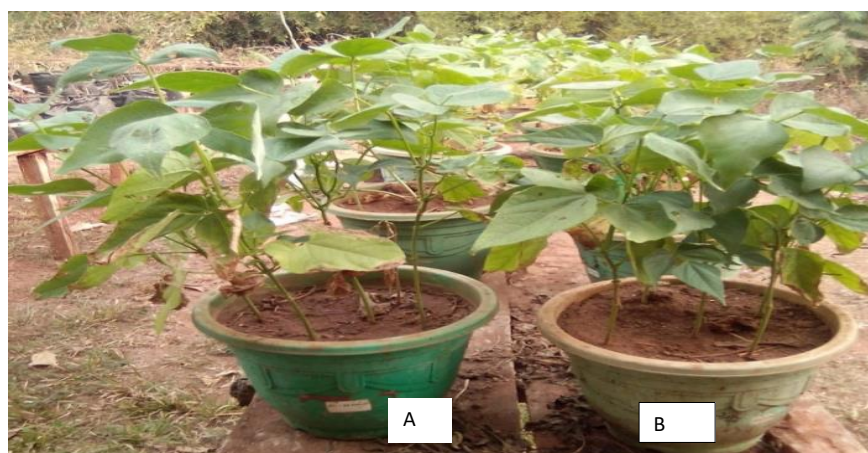


Fig. 4. Plants of common bean, A: without mycorrhizal, B: inoculated with mycorrhizal, Common bean leaves showing symptoms of foliar diseases attack with the severity lesions caused by *Pseudocercospora griseola*.

### 3.4. Influence of treatments and varieties on the biochemical parameters of common bean in pots

#### 3.4.1. Amino acid, proline and total phenol contents of fresh leaves

The results obtained on amino acid, proline and phenol content showed significant differences between treatments ( $P < 0.01$ ) and varieties ( $P < 0.0001$ ) at both sites. No significant effect was observed between variety-x-treatment interactions in the two varieties of the common bean (Fig.4).

In the pots containing the sterilized soil of Olamze, the highest amino acid content in the leaves was obtained by the simple mycorrhizal treatment T2 (4.05 mg/g) in the variety GLP 195-C. Concerning the PNG variety, the mycorrhizal treatment T7 (5.69 mg/g) obtained the highest amino acid content in the leaves compared to the synthetic fungicide treatment T4 (4.15 mg/g) and significantly ( $P < 0.01$ ) in the control T0 (3.79 mg/g). Also, the highest proline content was registered by treatments T7 and T2 of GLP 195-C variety (6.89 mg/g and 6.92 mg/g) and PNG variety (15.49 mg/g and 15.19 mg/g) respectively. The highest phenol content was recorded in mycorrhizal treatments T2 of GLP 195-C variety (13.37 mg/g) and T7 of PNG variety (14.78 mg/g) (Fig. 4A).

In the pots containing the sterilized soil of Soa, the mycorrhizal treatments T7 (3.93 mg/g and 5.52 mg/g) and T2 (3.97 mg/g and 5.52 mg/g) obtained the highest amino acid concentrations in the leaves compared to the synthetic fungicide treatments T4 (3.46 mg/g and 4.49 mg/g) and significantly ( $P < 0.0001$ ) in the control T0 (2.31 mg/g and 3.60 mg/g) for the two varieties of common bean respectively (GLP 195-C and PNG). The highest proline and phenol content was

registered in mycorrhizal treatments T7 for GLP 195-C variety (6.81 mg/g and 17.71 mg/g) and PNG variety (14.82 mg/g and 14.40 mg/g) respectively (Fig. 3B).

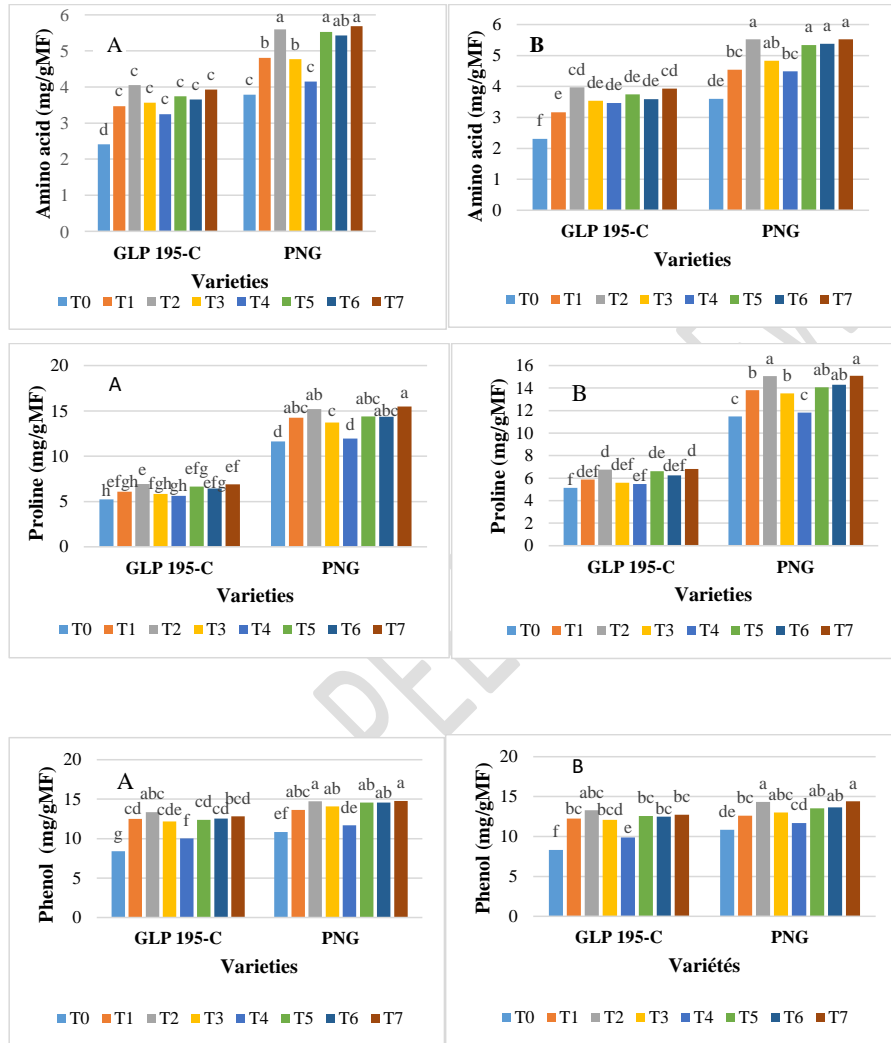


Fig. 4. Influence of treatments and varieties on the amino acid, proline and phenol content of common bean ; A: Olamze, B: Soa. T0: Control, T1: *Acaulospora tuberculata*, T2: *Gigaspora gigantea*, T3: *Entrophospora infrequens*, T4: chemical fungicide Terazeb, T5: *Acaulospora tuberculata* and *Gigaspora gigantea*, T6: *Acaulospora tuberculata* and *Entrophospora infrequens*, T7: *Gigaspora gigantea* and *Entrophospora infrequens*. Means followed by the same letter for each variety are not significantly different according to Tukey's test at the 5% threshold.

### 3.4.2. Phenolic content in fresh common bean leaves

The results obtained on the flavonoid and tannin content in the leaves showed significant differences between the treatments ( $P < 0.0001$ ) and the varieties ( $P < 0.0001$ ) in the two soils. In the pots containing the sterilized olamze soil, the mycorrhizal treatments T7, T2, T5, T6, T3

and T1 increased the flavonoid content by 32% to 83% and the tannin content from 124% to 242% compared to the control in GLP 195-C. For the PNG variety, the T7, T2, T5, T6, T1 and T3 mycorrhizal treatments increased the flavonoid content from 35% to 55% and the tannin content from 111% to 188% compared to the T0 control. The highest flavonoid and tannin content in the leaves was obtained by the PNG variety (10.21 mg/g and 2.86 mg/g) and the lowest were recorded by the GLP 195-C variety (10.21 mg/g and 2.68 mg/g) (Fig.5A).

In the pots containing the sterilized Soa soil, the mycorrhizal treatments T7, T2, T5, T6, T3 and T1 increased the flavonoid content by 44% to 68% and the tannin content from 85% to 298% compared to the control T0 in GLP 195-C. For the PNG variety, the mycorrhizal treatments T7, T2, T5, T6, T1 and T3 increased the flavonoid content by 28% to 50% and the tannin content in the leaves by 60% to 184% compared to the T0 control. The highest flavonoid and tannin content in the leaves was obtained by the PNG variety (9.88 mg/g and 2.78 mg/g) and the lowest were recorded by the GLP 195-C variety (7.80 mg/g and 2.61 mg/g) (Fig.5B).

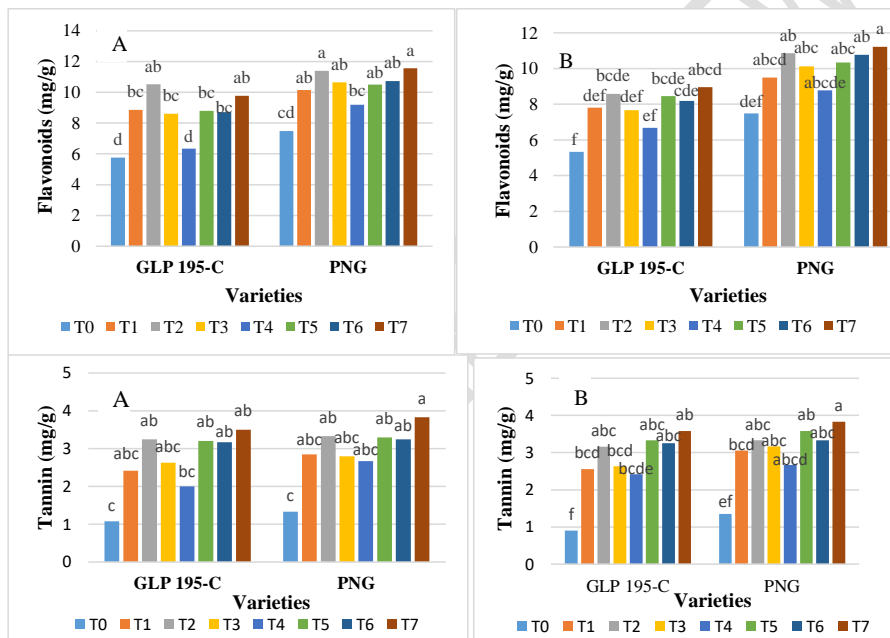


Fig. 5. Influence of AMF on flavonoid and tannin content in common bean leaves. A-A: Olamze, B: Soa. T0: Control, T1: *Acaulospora tuberculata*, T2: *Gigaspora gigantea*, T3: *Entrophospora infrequens*, T4: chemical fungicide Terazeb, T5: *Acaulospora tuberculata* and *Gigaspora gigantea*, T6: *Acaulospora tuberculata* and *Entrophospora infrequens*, T7: *Gigaspora gigantea* and *Entrophospora infrequens*. Means followed by the same letter for each variety are not significantly different according to Tukey's test at the 5% threshold.

### 3.4.3. Enzyme activity content of polyphenoloxidases and peroxidase in common bean leaves

Polyphenoloxidase and peroxidase content varied significantly between treatments ( $P < 0.0001$ ) in the two soils. There are no significant differences between varieties and between varieties x treatments interaction (Fig. 6). In the pots containing the sterilised olamze soil, the mycorrhizal treatments T2, T5, T7, T6, T1 and T3 increased the polyphenoloxidase content by 25% to 70% and the peroxidase content in the leaves by 69% to 104% compared to control T0

in GLP 195-C. For the PNG variety, the mycorrhizal treatments T2, T5, T7, T6, T1 and T3 increased the polyphenoloxidase content by 31% to 92%<sup>%,%</sup>, the peroxidase content in the leaves by 51 to 94% compared to the T0 control. The highest content of polyphenoloxidase and peroxidase enzyme activities in the leaves was obtained by the PNG variety and the lowest was recorded by the GLP 195-C variety.

In the pots containing the sterilised soil Soa, the mycorrhizal treatments T7, T5, T2 and T6 increased the polyphenoloxidase content by 23 to 65 % and the peroxidase content in the leaves by 72 to 109% compared to control T0 in GLP 195-C. For the PNG variety, the T2, T5, T7, T6, T1 and T3 mycorrhizal treatments increased the polyphenol oxidase content from 28% to 85%, the peroxidase content in the leaves from 51% to 94% compared to the T0 control. The highest content of enzymatic activities of polyphenoloxidases and peroxidases in the leaves was obtained by the PNG variety and the lowest was recorded by the GLP 195-C variety (Fig. 6B).

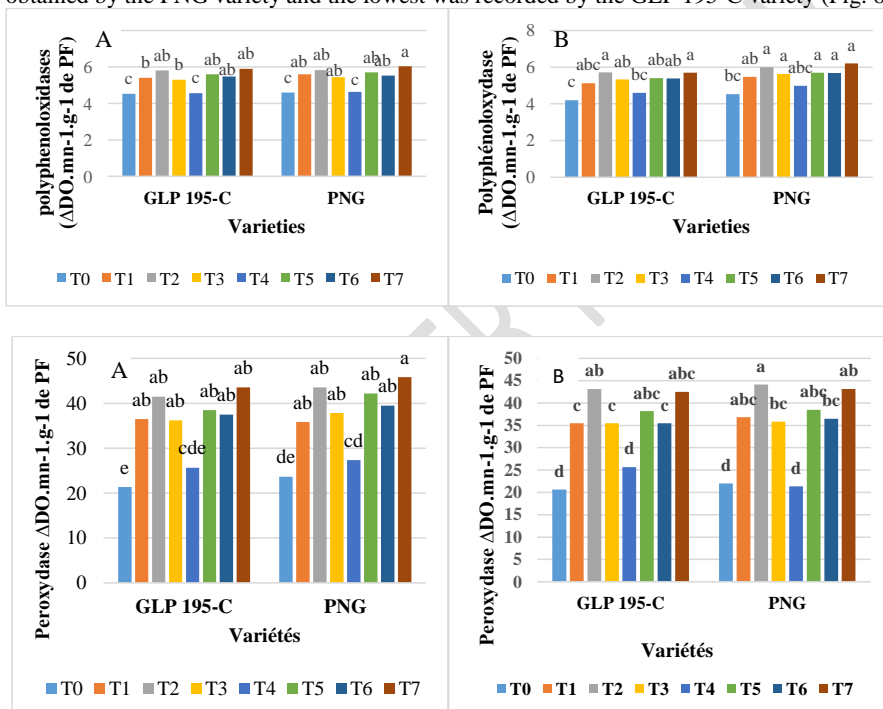


Fig. 6. Influence of AMF on the polyphenoloxidase and peroxidase content of common bean leaves. A-A: Olamze, B: Soa. T0: Control, T1: *Acaulospora tuberculata*, T2: *Gigaspora gigantea*, T3: *Entrophospora infrequens*, T4: chemical fungicide Terazeb, T5: *Acaulospora tuberculata* and *Gigaspora gigantea*, T6: *Acaulospora tuberculata* and *Entrophospora infrequens*, T7: *Gigaspora gigantea* and *Entrophospora infrequens*. Means followed by the same letter for each variety are not significantly different according to Tukey's test at the 5% threshold.

### 3.4.4. Protein content in the leaves of the common bean

Results on protein content in the leaves varied depending on the treatments and varieties in the two soils. A significant effect was observed between treatments ( $P < 0.0001$ ) and between variety x treatment interaction ( $P < 0.001$ ). No significant effects were observed between varieties in the two varieties of common bean (Fig.7).

In pots containing Olamze sterilized soil, plants inoculated with T2, T7, T5, T6, T1 and T3 mycorrhizae increased leaf protein content by 30% to 39% and 19% to 32% compared to T0 control pots in GLP 195-C and PNG respectively (Fig.7A).

In pots containing sterilized Soa soil, plants inoculated with T7, T2, T5, T6, T1 and T3 mycorrhizae increased leaf protein content by 28% ~~to 41 to 41%~~ and 16% to 27% compared to control T0 pots in GLP 195-C and PNG, respectively. The highest protein content in the leaves was obtained by the PNG variety and the lowest was recorded by the GLP 195-C variety (Fig.7B).

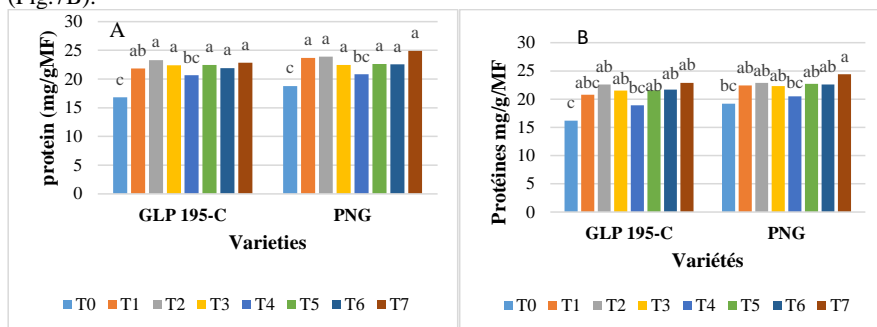


Fig. 7. Influence of AMF on the protein content of common bean. **A:A:** Olamze, **B:B:** Soa. **T0:** Control, **T1:** *Acaulospora tuberculata*, **T2:** *Gigaspora gigantea*, **T3:** *Entrophospora infrequens*, **T4:** chemical fungicide Terazeb, **T5:** *Acaulospora tuberculata* and *Gigaspora gigantea*, **T6:** *Acaulospora tuberculata* and *Entrophospora infrequens*, **T7:** *Gigaspora gigantea* and *Entrophospora infrequens*. Means followed by the same letter for each variety are not significantly different according to Tukey's test at the 5% threshold.

#### 4. DISCUSSION

Mycorrhizal fungi belonging to the phylum Glomeromycota form mutually beneficial symbionts with the majority of plant species in terrestrial ecosystems (over 90 %) (Smith and Read, 2008; Brundrett, 2002). Mycorrhizal associations have facilitated plant colonization on land (Redecker *et al.*, 2000) by influencing plant physiology and soil structure (Smith *et al.*, 2010; Fellbaum *et al.*, 2012). Several studies have demonstrated that Arbuscular Mycorrhizal Fungi (AMF) enhance plant resistance against various fungal pathogens (Bi *et al.*, 2007). Moreover, the induction of plant defenses during mycorrhization plays a vital role in mycorrhizal-enhanced resistance (Jung *et al.*, 2012). It is in this context that this study was investigated to induce natural defense of common bean against angular leaf spot disease through mycorrhization.

The results obtained on mycorrhizal root colonization of common bean showed that colonization rates ranged from 63.33% to 83.33% in the pots of mycorrhizal plants compared to non-mycorrhizal plants (00%) for both varieties of common bean. The absence of mycorrhizal hyphae in the pots of plants not inoculated with AMF shows that the pots were free of any contamination.

Mycorrhizal plants improved amino acid content from 44% to 70%, proline content from 20% to 33%, total phenol content from 36% to 60%, protein content from 16% to 41%, flavonoid content from 27% to 82%, tannin content from 60% to 298%, polyphenoloxidase content from 15% to 74% and peroxidase content from 31% to 109% compared to control in both varieties of common bean. Several hypotheses can be put forward to ~~explain:explain~~ : AMF promoted the development of the plant root system, which allowed them to explore a larger volume of soil, to absorb greater amounts of phosphorus and nitrogen and consequently to increase primary and secondary metabolites. Indeed, phosphorus and nitrogen are constituents of amino acids, proteins, phenol and phenolic compounds. It is well established that after root colonization by arbuscular mycorrhizal fungi, plants adjust the expression of their

physiological, biochemical, and molecular genes, resulting in the accumulation of important plant metabolites such as proline, terpenes, proteins, and phenols (Tchameni et al., 2012; Savioli et al., 2012). Amino acid metabolism is affected following the establishment of colonization by endomycorrhizal fungi. These results demonstrate a systemic effect of mycorrhizae. A recent in vitro study demonstrated the ability of arbuscular mycorrhizal fungus hyphae to directly absorb amino acids from the culture medium and transfer them to the root of the plant (Whiteside et al., 2012). The results obtained showed that inoculation of plants with AMF reduced the incidence of the order of 20 to 150% and the severity of the angular leaf spot disease of the common bean by the order of 15 to 100% compared to non-inoculated plants (synthetic fungicide treatment and the absolute control). This reduction in the incidence and severity of angular leaf spot disease could be attributed to AMF. AMF are able to regulate the types and amounts of secondary metabolites in the physiological metabolism of host plants, an important mechanism by which arbuscular mycorrhizal fungi induce plant resistance to disease (Elliott et al., 2021). AMF can induce the production of phytochemicals such as calloses, alkaloids, phenols, phenolic compounds (flavonoids and tannins) and enzymatic compounds (polyphenoloxidases and peroxidases) on the surface of the internal and external hyphae of the root, and these secondary metabolites are beneficial to plants, helping them to resist adverse conditions caused by diseases. The deposition of callose and pectins and the activation of the phenylpropanoid pathway resulting in the accumulation of lignin in mycorrhizal plants are thought to be involved in plant protection (Pozo et al., 2002; Lee et al., 2005). *Glomus* and *Gigaspora* sp initiate cell wall defense related to protein production, enzyme activity, and increased phenolic compound production of common bean against *Ralstonia solani* (Abdel-Fattah et al., 2011). The increased synthesis of total soluble amino acids, proline, total phenols, proteins, phenolic compounds and enzymatic activity allows plants inoculated with AMF to reduce their aggressiveness against *Phaeoisariopsis griseola*. Proline is an amino acid that accumulates in many plant species in response to environmental stress and is an important secondary metabolite for responses to abiotic and biotic stresses (Szabados and Savoure, 2010). The family of phenolic substances includes various compounds such as flavonoids and phenolic carboxylic acids, which are secondary metabolites all related to signaling molecules and plant defense systems (Tahat et al., 2012). This considerable reduction in disease could also be attributed to the inoculation of mycorrhizal strains, which are thought to have promoted the induction of defence-related regulatory genes in common bean leaves and conferred resistance to the pathogen (Sanglard et al., 2013). Campos et al. (2011) had already demonstrated this by working on the systemic induction of resistance genes by arbuscular mycorrhizal symbiosis in rice. The significant reduction in disease could also be attributed to AMF. AMF stimulate plant growth through better nutrition, improved plant health, and symbiotic compensation for damage caused by the plant pathogen (Cordier et al., 1998; Whipps, 2004; Dalpe, 2005; Wehner et al., 2010). The morphological and architectural transformation of the root, which can alter the infectious dynamics of the pathogen, although evidence of a correlation has not been demonstrated to date. In addition, AMF induces the formation of thicker lateral roots (Matsubara et al., 1995). Modification of the microflora and the increase in the level of organic matter in the soil. These changes can lead to the stimulation of compound production by microflora with antagonistic activity against certain root pathogens (Barea et al., 2005). The induction or suppression of certain plant defense mechanisms, including enzymatic mechanisms (Pozo et al., 2007). Indeed, mycorrhization protection against root parasites has been associated with the accumulation of phenols, phytoalexins and the induction of the activity of specific isoforms of hydrolytic enzymes such as chitinases and -1,3 glucanases in mycorrhizal roots (Li et al., 2006). The protection conferred by the mycorrhizal association to the plant against *Meloidogyne incognita* was associated with the expression of a chitinase gene, VCH3, expressed throughout the root system (Li et al., 2006). Finally, the accumulation of

defense proteins, in particular PR (Pathogenesis Related) proteins and the involvement of the signaling pathways of jasmonic acid, ethylene and salicylic acid, known to play a major role in the regulation of plant defense mechanisms, seem to be at the origin of these protection processes (van Wees *et al.*, 2008). Many other results also indicate a bioprotective effect of ~~AMF~~: a reduction or even inhibition of the negative effect of certain plant pests (Azcon-Aguilar & Barea, 1996). These results could be attributed, among other things, to the variety effect, since the PNG variety is apparently resistant, unlike the GLP 195-C variety which is tolerant.

## 5. Conclusion

The objective of this work was to evaluate the bioprotective potential of arbuscular mycorrhizal fungi against the development of common bean angular spot disease. Biochemical parameters, ~~namely~~: content of amino acids, proline, total phenol, flavonoids, tannins, polyphenoloxidase, peroxidase and proteins. Epidemiological parameters, incidence and severity of angular spot disease were evaluated. From the results obtained, it emerges ~~that~~: Simple mycorrhizal treatments and mycorrhizal combinations improved amino acid content from 44% to 70%, proline content from 20% to 33%, total phenol content from 36% to 60%, protein content from 16% to 41%, flavonoid content from 27% to 82%, tannin content from 60% to 298%, ~~polyphenol~~ oxidase content from 15% to 74% and peroxidase content from 31% to 109% compared to the control in both common bean varieties.

Analysis of the biosynthesis of secondary metabolites involved in resistance to angular spot disease revealed an increase in amino acid, proline, total phenol, protein, flavonoid, tannin, polyphenoloxidase and peroxidase and a reduction in foliar diseases in common bean plants inoculated with arbuscular mycorrhizal fungi compared to non-inoculated plants. Under conditions of low inputs from smallholder farmers in many parts of Africa, it has been envisioned that agricultural practices that can enable effective mobilization of arbuscular mycorrhizal fungi in soils will lead to improved bean yields. The findings call for an integrated approach involving disease-resistant germplasm, appropriate inputs that will support plants and protect them from *Phaeoisariopsis griseola* attacks.

The present study showed the potential for the development of a biological control measure to control the spread of *Phaeoisariopsis griseola* on African common bean varieties and allows for the development of a variety resistant to angular leaf spot disease that will help smallholder farmers increase crop yields.

## REFERENCES

- Abdel-Fattah GM, EL-Haddad SA, Hafez EE, Rashad YM, 2011. Induction of defense responses in common bean plants by arbuscular mycorrhizal fungi. *Microbiol. Res.* 166:268–281.
- Azcon-Aguilar C, Barea JM, 2003. Arbuscular mycorrhizas and biological control of soil borne plant pathogens – An overview of the mechanisms involved. *Mycorrhiza* 6: 457-464.
- Barea JM, Pozo MJ, Azcon R & Azcon-Aguilar C, 2005. Microbial co-operation in the rhizosphere. *Journal of experimental botany*, 56: 1761-1778.
- Bi H H, Song Y Y and Zeng R S, 2007. Biochemical and molecular responses of host plants to mycorrhizal infection and their roles in plant defence. *Allelopathy J.* 20, 15–28.
- Brundrett M, 2002. Coevolution of roots and mycorrhizas of land plants. *New Phytol.* 154, 275–304. doi:10.1046/j.1469-8137.2002.00397.x (Redecker *et al.*, 2000)
- Cameron D D, Neal A L, Wees S C M, Van Ton J, 2013. Mycorrhiza-induced resistance: more than the sum of its parts? *Trends Plant Sci* 18, 539–545.
- Campo S, Martín-Cardoso H, Olivé M, Pla E, Catala-Forner M, Martínez-Eixarch M, 2020. Effect of root colonization by arbuscular mycorrhizal fungi on growth,

productivity and blast resistance in rice. *Rice* 13, 1–14. doi:10.1186/s12284-020-00402-7.

- Cordier C., Pozo M.J., Barea J.M., Gianinazzi S. & Gianinazzi-Pearson V., 1998.** *Rev. Sci. Technol., Synthese* 26: 06 -19 (2013) Cell defense responses associated with localized and systemic resistance to *Phytophthora parasitica* induced in tomato by an arbuscular mycorrhizal fungus. *Molecular Plant-Microbe Interactions*, [11](#): 1017-1028
- Djeugap FJ, Mefire MH, Nguéack J, Nguéguim M, Fontem DA, 2014.** Effet variétal et du traitement fongicide sur la sévérité de la maladie des taches angulaires et le rendement du haricot commun (*Phaseolus vulgaris* L.) à l'Ouest-Cameroun. *Int. J. Biol. Chem. Sci.* 8(3): 1221-1233.
- Elliott AJ, Daniell TJ, Cameron DD, Field KJ, 2021.** A commercial arbuscular mycorrhizal inoculum increases root colonization across wheat cultivars but does not increase assimilation of mycorrhiza-acquired nutrients. *Plants People Planet*, 3, 588–599.
- Fellbaum C, Gachomo E W, Beesetty Y, Choudhari S, Strahan G D, Pfeffer P E, 2012.** Carbon availability triggers fungal nitrogen uptake and transportin arbuscular mycorrhizal symbiosis. *Proc. Natl. Acad. Sci. U.S.A.* 109, 2666–2671. doi:10.1073/pnas.1118650109
- Ferrol N, Azcón-Aguilar C, Pérez-Tienda J, 2019.** Arbuscular mycorrhizas as key players in sustainable plant phosphorus acquisition: An overview on the mechanisms involved. *Plant Sci.* 280, 441–447. doi: 10.1016/j.plantsci.2018.11.011.
- Folin O, Denis W, 1915.** A colorimetric method for the determination of phenols and phenol derivatives in urine. *J Biol Chem* 22, 305–308.
- Harrier L A and Watson C A, 2004.** The potential role of arbuscular mycorrhizal fungi in the bioprotection of plants against soil-borne pathogens in organic and/or other sustainable farming systems. *Pest Manag. Sci.* 60, 149–157. doi: 10.1002/ps.82.
- Jung S C, Martínez-Medina A, Lopez-Raez J A, Pozo M J, 2012.** Mycorrhiza-induced resistance and priming of plant defenses. *J. Chem. Ecol.* 38, 651–664. doi:10.1007/s10886-012-0134-6.
- Kormanic P P and McGraw A C, 1982.** Quantification of Vesicular-Arbuscular Mycorrhiza in plant roots. *In* Methods and principles of mycorrhizal research. N.C. Schenck (red) APS. St. Paul, Minnesota, USA pp.37-45. Mpemboura Nsangou Salamitou, 2010
- Li HY, Yang GD, Shu HR, Yang YT, Ye BX, Nishida I & Zheng CC, 2006.** Colonization by the arbuscular mycorrhizal fungus *Glomus versiforme* induces a defense response against the root-knot nematode *Meloidogyne incognita* in the grapevine (*Vitis amurensis* Rupr.), which includes transcriptional activation of the class III chitinase gene VCH3. *Plant and cell physiology*, 47: 154-163.
- Martínez-Medina A, Roldán A, Albacete A, Pascual J, 2011.** The Interaction with Arbuscular Mycorrhizal Fungi or *Trichoderma harzianum* alters the shoot hormonal profile in melon plants. *Phytochemistry* 72, 223–229.
- Matsubara Y, Tamura H & Harada T, 1995.** Growth enhancement and *Verticillium* wilt control by vesicular-arbuscular mycorrhizal fungus inoculation in eggplant. *Journal of the Japanese Society for Horticultural Science*, 64: 555-561.
- Mitra D, Djebaili R, Pellegrini M, Mahakur B, Sarker A, Chaudhary P, 2021.** Arbuscular mycorrhizal symbiosis: plant growth improvement and induction of resistance under stressful conditions. *J. Plant Nutr.* 44, 1993–2028. doi: 10.1080/01904167.2021.1881552.
- Mpemboura N S, 2010.** Potentiel mycorrhizien infectieux des sols sous ~~jachère~~ [ajachère](#) a chromolaena odorata de trois localités de la région du centre. Diplôme d'études Approfondies 43 p.

- Ngonkeu M E L., 2009L., 2009.** Tolérance de certaines variétés de maïs aux sols à toxicité aluminique et manganique du sud Cameroun et diversités moléculaire et fonctionnelle des mycorrhizes à arbuscules. Thèse Ph.D Université de Yaoundé I. Cameroun.
- Nyabyenda P., 2005.** Les plantes cultivées en régions tropicales d'altitude d'Afrique: généralités, légumineuses alimentaires, plantes à tubercules et racines céréales. Presses agronomiques de Gembloux.
- Pretty J, Bharucha Z P, 2018.** *Sustainable intensification of agriculture: greening the world's food economy. 1st edn* (London: Routledge). doi: 10.4324/9781138638044
- Pozo M J, Albrechtsen B R, Bejarano E R, de la Pena E, Herrero S, Martínez-Medina A, 2020.** Three-way interactions between plants, microbes, and arthropods (PMA): impacts, mechanisms, and prospects for sustainable plant protection. *Plant Cell* 32, 1-11. doi: 10.1105/tpc.120.t0720.
- Rivero J, Lidoy J, Llopis-Giménez A, Herrero S, Flors V, Pozo M J, 2021.** Mycorrhizal symbiosis primes the accumulation of antiherbivore compounds and enhances herbivore mortality in tomato. *J. Exp. Bot.* 72, 5038–5050. doi: 10.1093/jxb/erab171.
- Sanchez-Bel, P, Troncho P, Gamir J, Pozo M J, Camañes G, Cerezo M, 2016.** The nitrogen availability interferes with mycorrhiza-induced resistance against *Botrytis cinerea* in tomato. *Front. Microbiol.* 7, 1–16. doi: 10.389/fmicb.2016.01598.
- Sanglard D A, Ribeiro C A G, Balbi B P, Arruda K M A, Moreira M A, 2013.** Characterization of the angular leaf spot resistance gene present in common bean cultivar Ouro Negro. *Journal of Agricultural Science*, 5(2): 19-23.
- Sanyang S F, Yaouba A, Tonjock R K and Tankou C M, 2019.** Survey of Cultural Practices and Assessment of Some Foliar Fungi Diseases of Common Bean (*Phaseolus vulgaris* L.) in the Western Highlands of Cameroon. *Journal of Advances in Biology & Biotechnology* 22(1): 15,2019 ; Article no.JABB49925 ISSN: 23941081.
- Schwartz HF, Correa VF, Pineda DPA, Otaña MM & Katherman M J, 1981.** Dry bean yield losses caused by ascochyta, angular, and white leaf spots in Colombia. *Plant Disease* 65: 494-496.
- Siasou E, Standing D, Killham K & Johnson D, 2009.** Mycorrhizal fungi increase biocontrol potential of *Pseudomonas fluorescens*. *Soil biology & biochemistry*, 41: 1341-1343.
- Smith, S.E., and Read, D.J., 2008.** *Mycorrhizal Symbiosis*, 3rd Edn. London: Academic Press.
- Smith, S.E., Facelli, E., Pope, S., Smith, F.A., 2010.** Plant performance in stressful environments: interpreting new and established knowledge of the roles of arbuscular mycorrhizas. *Plant Soil* 326, 3–20. doi:10.1007/s11104-009- 9981-5.
- Smith S E, Jakosen I, Gronlund M., and Smith F A, 2011.** Roles of arbuscular mycorrhizas in plant phosphorus nutrition : interaction between pathways of phosphorus uptake in arbuscular mycorrhizal roots have important implication for understanding and manipulating plant phosphorus acquisition. *Plant Physiol.*156, 1050-1057.doi : 10.1104/pp.111.174581.
- Szabados L, Savoure A, 2010.** Proline: a multifunctional amino acid. *Trends Plant Sci* 15, 89–97.
- Tahat MM, Sijam K, Othman R, 2012.** Ultrastructural changes of tomatoes (*Lycopersicon esculentum*) root colonized by *Glomus mosseae* and *Ralstonia solanacearum*. *Afr. J. Biotechnol.* 25, 668–6686.
- Tchameni SN, Nwaga D, Wakam L, Ngonkeu ELM, Fokom Kuate J, Etoa F-X, 2012.** Growth Enhancement, Amino Acid Synthesis and Reduction in Susceptibility Towards *Phytophthora megakarya* by Arbuscular Mycorrhizal Fungi Inoculation in Cocoa Plants. *J Phytopathol* 160, 220–228.

- Tchumakov and Zaharova T I, 1990.** Elucidation and statistical analysis of disease development. In: plant disease damage. Agropromlzdats, Moscou, PP. 5-60.
- Wagara I N, Mwang'Ombe A W, Kimenju J W, Buruchara R A, Kimani P M, 2011.** Reaction of selected common bean genotypes to physiological races of *Phaeisariopsis griseola* occurring in Kenya. *African Crop Science Journal*, 19(4): 343355.
- Wortmann C S, Brink M & Belay G, 2006.** *Phaseolus vulgaris L.* (common bean). Record from PROTA 4U. Brink, M. & Belay, G. (Editors). PROTA (Plant Resources of Tropical Africa/Ressources végétales de l'Afrique tropicale), Wageningen, Netherlands.
- Yemm E W and Cocking E C, 1955.** The determination of amino acids with ninhydrin. *Analyst London* 80: 209.

UNDER PEER REVIEW