

Seasonal Activities of thrips (*Thrips tabaci* L.) in onion and their Relation with the Various Environmental Factors

2290 words/ 3000- 5000 words

Abstract: (302 words/ 300 words)

Aim: To study the population dynamics of thrips (*Thrips tabaci* Lindeman) infesting onion in relation to weather parameters

Study Design: Field trail; Randomized Block Design.

Place and Duration of Study: The study was conducted at College farm at Navsari Agricultural University during Rabi of 2022-23 and 2023-24.

Methodology: For observations of thrips (*Thrips tabaci* Lindeman), the whole experimental plot was divided in five sectors and 5 plants were randomly selected from each sector. The observations on absolute thrips population were recorded at weekly interval by counting the number of thrips per plant during morning hours starting from one week after transplanting till to harvesting of the crop.

Results: Thrips population initiated during 3rd week of December (51st SMW) during both the year in the range of 2.25 to 15.87, 1.60 to 24.50 and 2.51 to 18.85 thrips per plant with an average of 6.67, 10.54 and 8.60 per plant during 2022, 2023 and in average of two years. The highest peak (15.87 /plant) was observed during 3rd week of February (8th SMW) in 2022 whereas, during 4th week of February (9th SMW) in 2023 as well as in average of two years with a population of 24.50 and 18.85 per plant, respectively. Thrips population had highly significant positive correlation with MaxT ($r=0.678$) whereas, highly significantly negatively correlated with EvRH ($r = -0.727$) during 2022. The population of thrips highly significantly positively correlated with BSS ($r=0.672$) during 2023. The other weather parameters had no role on incidence of thrips as the results were non-significant.

Conclusion: results of population dynamics of thrips (*T. tabaci*) on Onion for both the years, it can be concluded that the infestation of thrips was higher during 5th week of January to 1st week of March on onion.

Keywords: Thrips, *Thrips tabaci* Lindeman, Onion, Population dynamics, Weather parameters

Introduction:

The onion (*Allium cepa* L.) is a common vegetable plant in the *Alliaceae* family. The onion commonly known as the bulb onion or common onion is the genus *Allium*'s most frequently farmed species. Onion (*A. cepa*) is one of the important vegetables (bulb) crop, believed to have originated from Central Asia. In India, it is cultivated for more than 5000 years. According to colour, there are red, white and yellow types. Red and white varieties are grown in India. Onions is a critical source of numerous phytonutrients as flavonoids, fructooligo saccharides (FOS), and thiosulfates and other sulfur compounds, identified as crucial factors of the Mediterranean eating regime Liguori et al., [7]. Onion is a main supply of phytochemicals beneficial for human health and wealthy in sulphur compounds accountable for their usual odour and flavour Loredana et al., [8]. In Gujarat, major onion growing districts are Bhavnagar, Junagadh, Jamnagar, Rajkot, Amreli, Surendranagar, Mehsana, Surat and Kheda. The area and production in onion in Gujarat state have increased during last decade. The area under cultivation was about 100 thousand ha and production of about 25.55 lacs MT. According to Hill [4] insect pest attacking the onion are onion thrips (*Thrips tabaci* Lindeman), onion fly (*Delia hylema*), aphids (*Myzus ascalonicus* D.), cut worm (*Agrotis ipsilon* R.), onion maggot (*Delia anticia* M.), army worm (*Spodoptera exigua* H.) and leaf miner (*Liriomyza trifolii* B.). Of these thrips, *T. tabaci* is one of the common and the most damaging pest of onion. This polyphagous insect

Comment [AEFH1]: ITALIC ????

Thrips tabaci L.) WRONG !!! .L. - Carl von Linné
The true scientific is Lindeman and not Linneus

"Karl Eduard Lindemann"- Lindemann

OCCURRENCE 1924 JULY

Binomial name

Thrips tabaci Lindeman, 1889

Onion thrips, Potato thrips, Tobacco thrips, Cotton seedling thrips In English Collected in United Kingdom of Great Britain and Northern Ireland ... [1]

Comment [AEFH2]:

1. Original research papers:
Papers that include original empirical data that have not been published anywhere earli ... [2]

Comment [AEFH3]: Lindemann and not L.

The letter L is abbreviated by Carlos Linneus. For Karl Lindemann and abbrevitde the word used as abbreviation for the name is: ... [3]

Comment [AEFH4]: Suggested Incomplete

Information: The Study Was Conducted at Faculty Agricola at Navsari Agricultural ... [4]

Comment [AEFH5]: Suggestion: Complete scientific name

Comment [AEFH6]: Suggestion: Complete scientific name

Comment [AEFH7]: Where were the references [1]. [2]. [3]. [4]. [5]. [6] ???????????

Comment [AEFH8]: For biological nomenclature, the conventions of the International Code of Botanical Nomenclature, the International Code of Nomenclature ... [5]

Comment [AEFH9]: ESPÉCIE ACEITO *Myzus ascalonicus* Doncaster, 1946 Publicado em: Doncaster, J.P. (1946) The shallot Aphis, *Myzus ascalonicus* sp. n. ... [6]

Comment [AEFH10]: Nome binomial *Agrotis ipsilon* (Hufnagel, 1766)
https://pt.wikipedia.org/wiki/Agrotis_ipsilon ... [7]

Comment [AEFH11]: The standard author abbreviation Meigen is used to indicate this person as the author when citing a botanical ... [8]

Comment [AEFH12]: *Spodoptera exigua* (Hübner)

Comment [AEFH13]: The abbreviation "Burges" is used to indicate Norman Alan Burges as an authority in the scientific description and classification of vegetabl ... [9]

occurs worldwide and attacks virtually all Allium crops [Lal and Singh, [6] and Gupta *et al.*, [3]. Thrips attack onion at all the stages of crop growth, but their number increases from bulb initiation and remains high up to bulb development till maturity. Nault *et al.*, [9] reported about 30-50 per cent and also causes significant reduction (28-73%) in the bulb size. Moreover, weather parameters also play a pivotal role in the biology of any insect pests. Temperature, humidity, sun shine hours and wind velocity are the most crucial weather parameters influencing the rate of growth and development of insect pests.

2.0- Materials and Methods: my suggestion

2.1 Research location

Onion was transplanted during third week of December and raised by adopting recommended agronomical practices at College Farm, N. M. College of Agriculture, NAU, Navsari. The crop was sown during Rabi in the years 2022-23 and 2023-24.

2.2- Methodology

The Agrifound light red variety of onion raised on the experimental plot of 20 × 20 m² size with the spacing 15 cm x 10 cm. The crop was sown in second week of December. The plot was kept insecticide free for pest development. For observations of thrips, the whole experimental plot was divided in five sectors and 5 plants were randomly selected from each sector. The observations on absolute thrips population were recorded at weekly interval by counting the number of thrips per plant during morning hours starting from one week after transplanting till to harvesting of the crop.

The data on weather parameters were collected from meteorological observatory of College farm, N. M. College of Agriculture, Navsari Agricultural University for the investigation. The relationship between meteorological variables viz., maximum temperature (MaxT), minimum temperature (MinT), morning relative humidity (RH1), evening relative humidity (RH2), bright sunshine hours (BSS) and wind speed (WS) and pest population was studied. The weekly mean observation made on insect pests was subjected to Pearson's correlation coefficient analysis. Also, correlation analysis was conducted for the data of number of thrips per plant with weather parameters.

3.0-Result and Discussion:

3.1-Number of thrips??? per Plant:

The data presented in the (Column 4 in Table 1), reveals that the pest population started from 2nd WAT i.e., 51st SMW. The pest population of thrips fluctuated from 1.82 to 15.87 thrips/plant. The pest activity gradually increased from the 1st SMW to 3rd SMW, then a slight decline was seen the following week i.e., on 4th SMW. After that, the population gradually increased till the peak pest population was observed. The peak activity was seen in 8th SMW when highest number of thrips per plant i.e., 15.87 thrips/plant was recorded. After that, it gradually declined till the harvest.

The data recorded in the year 2023-24 (Column 5 in Table 1) (Fig. 1), was found to be similar to the data of the previous season. The pest population started from 2nd week of transplanting during 3rd week of December (51st SMW) and remained in the field up to 4th week of March (13th SMW) in the range of 1.60 to 24.50 thrips per plant with an average of 10.54. The population further increased during next week and found increasing upto 4th week of February and reached to the highest peak (24.50 per plant) during 4th week of February (9th SMW). The incidence of thrips gradually decreased then after upto the harvest of the crop.

The average data of two years on thrips population (Column 6 in Table 1) revealed that the thrips appeared from 3rd week of December (50th SMW, 2nd WAT) and persisted throughout the crop season up to 4th week of March (13th SMW, 16th WAT). The incidence of thrips was at the highest peak (18.85 per plant) during 4th week of February (9th SMW). The population was in range of 2.01 to 18.85 thrips per plant with 8.60 mean population. In nutshell, the thrips population in rabi onion crop was observed higher during last week of January to 1st week of March. Patel [11] observed the higher incidence of thrips on onion during first week of February and remained in the field till to crop maturity

Comment [AEFH14]: Manuscript structure
The manuscript should be written in English with a simple layout. The text should be prepared in single column format. Bold face, italics, subscripts, superscripts etc. can be used.
The text, excluding the abstract, if required, can be divided into numbered sections with brief headings. Starting from introduction with section 1. subsections should be numbered (for example 2.1 (then 2.1.1, 2.1.2, 2.2, etc.) up to three levels.

Comment [AEFH15]: INCOMPLETE INFORMATION FROM THE RESEARCH INSTITUTION: COLLEGE, SCHOOL, DEPARTMENT, CITY, DISTRICT, CONTRY

Comment [AEFH16]: was the species under study ??? define the species

Comment [AEFH17]: Incomplete information from the research institution: college, school, department, city, district, contry

at Anand. Panse *et al.* [10] noticed the peak thrips population during 10th meteorological standard week. According to Patel and Patel [12], thrips population initiated after 1st week after transplanting and attained its highest peak during 2nd week of March and remained in field till to crop matured. Chhatrola *et al.* [2] also reported higher activity of thrips in garlic during 9th to 16th week after transplanting. Kumawat *et al.* [5] recorded the incidence of thrips on onion during 3rd week of February (3.66 /plant) and peaked during the last week of March (40.32 /plant).

3.2-Correlation of thrips Population with Weather Parameters:

The correlation analysis between number of larvae per plant and weather parameters of the year 2022-23. The population of thrips (Column 2 in Table 4.2) had highly significant positive correlation with MaxT (r=0.678) indicating that as MaxT increased; the incidence of thrips also increased or vice versa. Thrips population was highly significantly negatively correlated with EvRH (r = -0.727). It indicates that as there is a unit increase or decrease in EvRH, the population of thrips was decreased or increased. The other weather parameters MeT and BSS were positively correlated with population but the result was non-significant. Similarly, MinT, MoRH, EvRH, MeRH and WS were non significantly negatively correlated with thrips population. Where table 2 ??

During the year 2023-24, the correlation between number of thrips per plant and weather parameters revealed that the population of thrips had highly significant positive correlation with BSS (r=0.672). The population of thrips was positively correlated with MaxT, while it was negatively correlated with MinT, MeT, MoRH, MeRH, EvRH and WS.

Waiganjoet *al.* [13] concluded that there was significantly negative correlation between thrips population and both maximum and minimum relative humidity. Patel [11] reported that thrips population on garlic significantly positively correlated with bright sunshine hours and morning vapour pressure however, significantly negatively correlated with morning relative humidity, evening relative humidity, evening vapour pressure and mean vapour pressure. Bhondeet *al.* [1] reported that maximum temperature had significant positive correlation with thrips population and minimum temperature, relative humidity (am), relative humidity (pm) and rainfall had non-significant negative correlation with thrips population. Where table 3??????

Conclusion:

With the reference of the above results of population dynamics of thrips on Onion for both the years, it can be concluded that the infestation of thrips was higher during 5th week of January to 1st week of March on onion. Thus, the weather parameters Maximum Temperature, Evening Relative Humidity and Bright Sunshine hours had significant and major role on fluctuation of thrips during season. Hence, with increase or decrease in EvRH, population of thrips was decreased or increased. This knowledge will enable the farmers to keep track of the said pest according to the changing climate. ok.

References:

Reference style: References must be listed at the end of the manuscript and numbered in the order that they appear in the text. Every reference referred in the text must also present in the reference list and vice versa. In the text, citations should be indicated by the reference number in brackets [3].

All references should follow the following style: Reference to a journal:

For Published paper: 1- Hilly M, Adams ML, Nelson SC. A study of digit fusion in the mouse embryo.

Clin Exp Allergy. 2002;32(4):489-98.

Note: List the first six authors followed by et al.

Note: Use of DOI number for the full-text article is encouraged. (if available).

Comment [AEFH18]: Where was Table 1 and Figure 1, already indicated in the text and was not placed. See Journal guidelines.

Comment [AEFH19]: of which Thrips rejects the research. During the handle of the manuscript, the scientific name of the species under study is not used. In the conclusions do not define what species was studied.

What?? EvRH?????

Comment [AEFH20]: Reference style References must be listed at the end of the manuscript and numbered in the order that they appear in the text. Every reference referred in the text must also present in the reference list and vice versa. In the text, citations should be indicated by the reference number in brackets [3].

Note: Authors are also encouraged to add other database's unique identifier (like PUBMED ID

- Bhonde, B. N., Kakde, S. P. and Kale, R. R. (2019). Study the seasonal incidence of *T. tabaci* under field condition, *J PharmacognPhytochem*, **8**: 1348-50.
- Chhatrola, D. P. Vyas, H. J. and Baraiya K. P., (2003). Influence of abiotic factors on population build- up of thrips, *Thrips tabaci* in garlic. *Indian J. Plant Protection*, **31**(2): 98-100.
- Gupta, R. P., Srivastava, K. J. and Pandey, U. B. (1994). Diseases and insect pests of onion in India. *Acta Horticulturae*, **358**: 265-269.
- Hill, D. S. (1983). Tropical Crops and Their Pest Spectra. In Agricultural Insect Pests of the Tropics and Their control. Cambridge University Press, London. pp. 614.
- Kumawat, K., Jat, B. L., and Kumawat, R. (2018). Seasonal incidence of thrips, *Thrips tabaci* on onion. *J. Entom. and Zoo. Studies*, **6**(3): 1047- 1049.
- Lal, B. S. and Singh, L. M. (1968). Biology and control of onion thrips in India. *J. Economic Entom.*, **61**(3): 676-679.
- Liguori, L., Califano, R., Albanese, D., Raimo, F., Crescitelli, A., and Di Matteo, M. (2017). Chemical composition and antioxidant properties of five white onion (*Allium cepa* L.) landraces. *J. of Food Quality*. 2017(1): 6873651.
- Loredana, L., Giuseppina, A., Filomena, N., Florinda, F., and Donatella, A. (2019). Biochemical, antioxidant properties and antimicrobial activity of different onion varieties in the Mediterranean area. *J. Food Measurement and Characterization*, **13**(2): 1232-1241.
- Nault, B. A., Hsu, C. L. and Hoeping, C. A. (2012). Consequences of co-applying insecticides and fungicides for managing *Thrips tabaci* (Thysanoptera: *Thripidae*) on onion. *Pest Manag. Sci.*, **69**(7): 841-850.
- Panse, R. K., Gupta, A. and Jain, P. K. (2012). Eco -friendly management of *Thrips tabaci* (Lindeman) in onion. *Pesticide Res. Journal*, **24**(2): 155-158.
- Patel, H. C. (2011). Population dynamics, varietal susceptibility and management of thrips [*Thrips tabaci* Lindeman] in onion (*Allium cepa* Linnaeus). M.Sc. (Agri.) Thesis submitted to Anand Agricultural University, Anand.
- Patel, H. C. and Patel, J. J. (2015). Population dynamics of thrips (*Thrips tabaci* Lindeman) on onion in relation to different weather parameters. *Trends in Biosci.*, **8**(2): 531-534.
- Waiganjo, M. M., Gitonga, L. M. and Mueke, J. M., (2008). Effects of weather on thrips population dynamics and its implications on the thrips pest management. *Afr. J. Hort. Sci.*, **1**: 82-90.

Table 1: Population dynamics of thrips, *T. tabaci* on onion . wrongs !!!!!!!!!!!

Months and Weeks	Weeks after transplanting	Std. Meteorological Week	No. of thrips /plant		Average
			2022	2023	
1	2	3	4	5	6
December	II	1	50	0.00	0.00
	III	2	51	2.42	1.60
	IV	3	52	3.10	3.24
January	I	4	1	2.25	4.84
	II	5	2	3.94	5.61
	III	6	3	5.38	3.22
	IV	7	4	3.61	8.40

Comment [AEFH21]: Tables have no external vertical lines. Tables 1 and 2 must be arranged.

Tables & Figures
Tables & figures should be placed inside the text. Tables and figures should be presented as per their appearance in the text. It is suggested that the discussion about the tables and figures should appear in the text before the appearance of the respective tables and figures. No tables or figures should be given without discussion or reference inside the text.
Tables should be explanatory enough to be understandable without any text reference. Double spacing should be maintained throughout the table, including table headings and footnotes. Table headings should be placed above the table. Footnotes should be placed below the table with superscript lowercase letters.
Each figure should have a caption. The caption should be concise and typed separately, not on the figure area. Figures should be self-explanatory. Information presented in the figure should not be repeated in the table. All symbols and abbreviations used in the illustrations should be defined clearly. Figure legends should be given below the figures.

	V	8	5	8.55	12.20	10.37
February	I	9	6	10.73	14.81	12.77
	II	10	7	12.40	16.33	14.36
	III	11	8	15.87	20.54	18.21
	IV	12	9	13.20	24.50	18.85
March	I	13	10	11.68	22.34	17.01
	II	14	11	7.55	15.72	11.63
	III	15	12	4.21	10.11	7.16
	IV	16	13	1.82	5.24	3.53
Mean				6.67	10.54	8.60

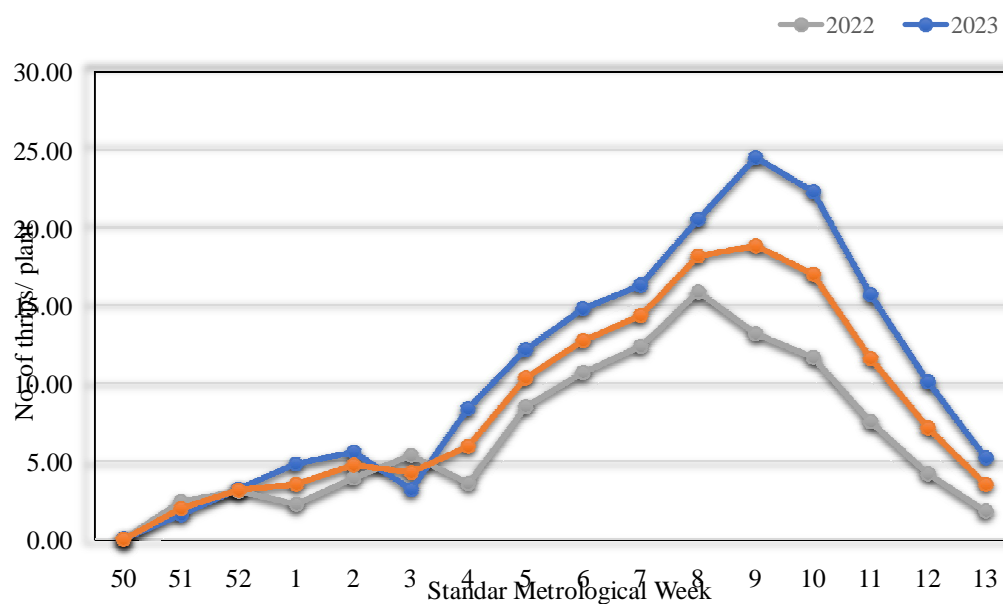


Fig. 1: Population dynamics of *Thrips tabaci* L. (WRONG!!!) on onion

Table 2: Relationship between weather parameters and population of thrips in onion

Weather parameters	Correlation Co-efficient (r)	
	2022	2023
1	2	3
Maximum Temperature, °C (MaxT)	0.678**	0.340
Minimum Temperature, °C (MinT)	-0.209	-0.422
Mean Temperature, °C (MeT)	0.476	-0.135
Morning Relative Humidity, % (MoRH)	-0.298	-0.255
Evening Relative Humidity, % (EvRH)	-0.727**	-0.300
Mean Relative Humidity, % (MeRH)	-0.623	-0.222
Wind Speed, km/hr (WS)	-0.233	-0.102
Bright Sun Shine Hours, hr/day (BSS)	0.354	0.672**

*Significant at 5 per cent level **Significant at 1 per cent level

Comment [AEFH22]: Tables & Figures
Tables & figures should be placed inside the text. Tables and figures should be presented as per their appearance in the text. It is suggested that the discussion about the tables and figures should appear in the text before the appearance of the respective tables and figures. No tables or figures should be given without discussion or reference inside the text.

Tables should be explanatory enough to be understandable without any text reference. Double spacing should be maintained throughout the table, including table headings and footnotes. Table headings should be placed above the table. Footnotes should be placed below the table with superscript lowercase letters.

Each figure should have a caption. The caption should be concise and typed separately, not on the figure area. Figures should be self-explanatory. Information presented in the figure should not be repeated in the table. All symbols and abbreviations used in the illustrations should be defined clearly. Figure legends should be given below the figures.

anywhere earlier (except as an abstract).
e. This type of paper normally should not
ot contain more than 15 figures/tables.

WDEZ 7/16/2024 4:44:00 PM

Lindemann and abbrevitute the word
st Range, and Geographic Distribution of
Eduard Lindeman, Based on Specimens
enusnicotian) Plants (Lindeman 1889).

d.

WDEZ 7/17/2024 11:34:00 AM

Botanical Nomenclature, the
e of Zoological Nomenclature should be

mimals, etc.) should be mentioned in

WDEZ 7/16/2024 5:31:00 PM

p. n. Proceedings of the Royal

tera, Aphldidae)." (1946): 27-31.

WDEZ 7/16/2024 5:42:00 PM

