

# Original Research Article

## INDICATIONS FOR CERVICAL CERCLAGE IN PREGNANT WOMEN: OBSTETRIC AND PERINATAL OUTCOMES IN A TERTIARY PUBLIC HOSPITAL

### ABSTRACT

**Aims:** To analyze the association between cervical cerclage and gestational and perinatal outcomes in a tertiary hospital, considering different surgical indications.

**Study design:** This observational, analytical, retrospective cohort study was based on documentary research.

**Place and Duration of Study:** The study was carried out at a tertiary public hospital in Cascavel, Paraná, Brazil, over a period spanning from January 1, 2020, to March 20, 2024.

**Methodology:** This retrospective cohort study was based on a database review of pregnant women who underwent cervical cerclage using the McDonald technique. The patients were classified into three groups according to the indication for the procedure: obstetric history only, ultrasound only, and both. Gestational and perinatal outcomes were analyzed. Comparisons were made using ANOVA, Kruskal-Wallis, and Chi-square tests, with  $P < 0.05$  considered significant.

**Results:** Of the 41 pregnant women selected, 19 (46.3%) underwent cervical cerclage by obstetric history, 16 (39.0%) by a combination of obstetric history and ultrasound, and 6 (14.6%) exclusively by ultrasound. There were significant differences between the groups in terms of maternal age, history of premature births and miscarriages, cervical length, and nulliparity. Despite the differences, no statistically significant discrepancies were found in obstetric and perinatal outcomes, such as gestational age at cerclage removal and delivery, preterm and term delivery rates, type of delivery, neonatal weight, and APGAR score, admission to the Neonatal Intensive Care Unit and neonatal morbidity and mortality. 76.3% of births occurred at term ( $> 37$  weeks). The average length of pregnancy after cervical cerclage was 21 weeks (IQR: 5.00). Furthermore, there was a favorable neonatal outcome in 90.3% of the patients.

**Conclusion:** The three indications for cervical cerclage were associated with longer gestation, a higher occurrence of full-term births, and a favorable neonatal outcome.

*Keywords: Cervical Cerclage; Cervical Incompetence; Preterm Labor; Ultrasound Diagnosis; Prenatal Care*

### 1. INTRODUCTION

Preterm labor (PTL) is one of the main causes of neonatal and perinatal morbidity and mortality[1–4], with around 15 million neonates born prematurely each year and responsible for approximately 1 million infant deaths due to complications related to preterm birth[5]. In 2020, the prevalence of preterm births worldwide was 9.9% of 13.4 million births, but rates vary according to each region[6]. Faced with this worrying reality, the prevention and treatment of preterm births stand out as fundamental elements in reducing neonatal mortality rates[1,4,7].

The etiology of PTL remains inconclusive, however, it has known risk factors[8–11]. In this sense, cervical insufficiency (CI) stands out as one of the main determinants of PTL, especially when there is a previous history of spontaneous premature births or spontaneous loss in the second trimester, as proven by a wide compilation of data[11–13]. Although it does not have a universally accepted definition, it is commonly described as the dilation and shortening of the cervix before the 37th week of pregnancy, without the presence of PTL, and which can result in membrane prolapse, premature rupture of the membranes, gestational loss or PTL[8,9,14] and has an incidence of 1% in the obstetric population worldwide and 8% in women who have suffered a gestational loss in the second trimester[4,9,15].

Despite the lack of a definitive diagnostic test, it is essential to carry out screening to predict the chance of CI occurring. This process is based on obstetric history (OH), physical examination, and ultrasound screening of the cervix. Through the OH, the main risk factors are previous gestational loss in the second trimester or a PTL before 34 weeks of gestation[8]. In this context, transvaginal ultrasound (US) has stood out in clinical practice as a reliable and reproducible method for assessing the condition of the uterus of the cervix[9], where cervical shortening of less than 25.0 mm in the second trimester is already associated with an increased risk of PTL[9,16].

Cervical cerclage (CC) is the surgical procedure of choice for treating CI[10,16]. The Royal College of Obstetricians and Gynaecologists (RCOG)[11], the Society of Obstetricians and Gynaecologists of Canada (SOGC)[9], and the American College of Obstetricians and Gynecologists (ACOG)[8] have defined its three indications: by OH, US and physical examination (emergency or rescue cerclage).

CC indicated by the OH is recommended electively in early pregnancy, between 12 and 14 weeks, for asymptomatic women with a single pregnancy, based on a previous history of premature births or gestational losses in the second trimester[8,9,11]. About the number of pregnancy losses, while the ACOG[8] mentions one or more pregnancy losses in the second trimester as a criterion for CC, the RCOG[11], and the SOGC[9] specifies that three or more pregnancy losses in the second trimester or premature births are necessary to consider CC.

CC indicated by the US is performed in women with a single pregnancy, a history of one or more spontaneous losses in the second trimester or premature births, and a cervical length equal to or less than 25.0 mm before 24 weeks of gestation. The transvaginal US is recommended to assess cervical length between 14 and 24 weeks of gestation, with ultrasound surveillance starting at 16 weeks and continuing until 24 weeks of gestation[8,9,11]. The RCOG[11] and the SOGC[9] do not recommend the insertion of a CC in pregnant women without other risk factors for PTL when a short cervix is identified on the US performed at the end of the second trimester.

The efficacy of CC for PTL prevention varies according to the type of indication (OH, US, and physical examination)[17]. Recently, the use of CC in cases of high-risk PTL has been suggested, supported by evidence such as the 2014 American College of Obstetricians and Gynecologists (ACOG) Practice Bulletin, which affirms its effectiveness in patients with a history of CI and cervical length of less than 20 mm by the 24th week of gestation[8]. In addition, the Cochrane review in 2017 highlighted that CC in high-risk situations could reduce PTL rates compared to groups not undergoing the procedure[14]. Therefore, the effectiveness of CC in various clinical scenarios and at different stages of pregnancy remains a subject of discussion and research.

This study aimed to evaluate the obstetric and perinatal outcomes in patients who underwent CC with an indication only for OH, only for the endovaginal US to measure the length of the cervix and a combination of both.

## **2. MATERIAL AND METHODS**

This is an observational, analytical, retrospective cohort study based on documentary research conducted at a tertiary public hospital in Cascavel, Paraná, Brazil, from January 1, 2020, to March 20, 2024.

The study included patients with singleton pregnancies diagnosed with or at risk of CI, who underwent CC using the McDonald technique based on ultrasound indications of cervical measurement and/or OH. Women with multiple pregnancies and those who underwent emergency or rescue cerclage indicated by physical examination were excluded from the study.

A non-random sampling approach was employed to review all available case files. The patients' medical information was retrospectively analyzed using the hospital center's data network (TASY® system), following approval from the ethics committee. The following clinical information was collected from the study population: maternal age, history of premature birth, spontaneous abortions in the second trimester, history of conization, and maternal comorbidities such as gestational diabetes, hypothyroidism, psychological conditions (anxiety, depression, and bipolar disorder), gestational hypertension, grade II and III obesity, leiomyoma, endometriosis, asthma, syphilis, arrhythmia, cervical cancer, polycystic ovary

syndrome, type 2 diabetes, trachelectomy, epilepsy, cysticercosis, thrombosis, polyhydramnios and supraventricular tachycardia. In addition, gestational age at CC, cervical length, and the finding of "sludge" on endovaginal ultrasound were recorded. Gestational outcomes were also analyzed: duration of CC, gestational age at delivery, the occurrence of preterm delivery, full-term delivery, miscarriage, type of delivery (vaginal or cesarean section), medications in use, and neonatal outcomes (birth weight, APGAR score, admission to the Neonatal Intensive Care Unit - NICU and neonatal mortality).

Indications for CC were categorized into three groups: CC indicated only by OH, CC indicated only by US measurement of the cervix, and CC indicated by a combination of both indications. Obstetric history refers to a history of one or more previous premature births or gestational losses in the second trimester related to painless cervical dilation or a history of cervical conization. US measurement of the cervix was applied to women whose transvaginal ultrasound revealed a short cervical length (less than 25.0 mm) in pregnancies of less than 24 weeks, without associated cervical dilation. CC examinations and procedures were conducted by experienced clinicians from the mentioned hospital center, and the three study groups were compared regarding clinical characteristics, pregnancy outcomes, and neonatal outcomes.

In this study, the crucial measure evaluated was the CC success rate, determined by the percentage of pregnancies that resulted in delivery after 37 weeks of gestation, with no immediate surgical complications related to CC. This measure essentially reflected the effectiveness of this intervention in preventing preterm births and their complications. For a more detailed analysis, pregnancy outcomes were categorized into different groups: miscarriage/fetal death before 22 weeks, extremely preterm birth before 28 weeks, very preterm birth between 28 and 31 weeks, moderate preterm birth between 32 and 36 weeks, and full-term birth from 37 weeks[18].

Statistical analyses were conducted using Jamovi software (Jamovi, Version 2.3, Computer Software, <https://www.jamovi.org>). Initially, the data underwent descriptive analysis, followed by categorization into frequency of occurrence. The Shapiro-Wilk test was used to assess the normality of the quantitative variables. When the data exhibited a normal distribution, a one-way ANOVA test was conducted, followed by Tukey's post hoc test. If the data did not follow a normal distribution, the Kruskal-Wallis test was used to identify potential significant differences between the groups. In addition, this analysis was complemented by the Dwass-Steel-Critchlow-Fligner (DSCF) test to carry out multiple comparisons.

The dichotomous data was converted into several observations (n) and frequency (%) to assess the distribution in each group. Subsequently, these data were subjected to the Chi-square test to explore significant associations between the variables of interest. All these tests, ANOVA, Kruskal-Wallis, and Chi-Square, were used to examine the relationship between the indication for CC and the different pregnancy outcomes. To assess survival over time, Kaplan-Meier methods were used to estimate the survival function, and the Log-Rank test was used to compare the survival curves between the groups. These methods provided a detailed understanding of survival dynamics in the study. A  $P$ -value  $< 0.05$  was considered significant in all analyses.

The study received approval from the Ethics Committee of the State University of Western Paraná, opinion 6.544.745/CAAE 75724923.5.0000.0107, and was conducted by the principles of the 2013 Declaration of Helsinki[19]. Due to its retrospective nature, informed consent was not required.

### 3. RESULTS

The study included 41 pregnant women who had undergone the CC. There were no immediate post-operative complications associated with the procedure, including rupture of membranes or spontaneous abortion within one week of surgery. Among these 41 patients, 9.7% (4) resulted in spontaneous pregnancy loss or neonatal mortality, and 76.3% (29) delivered after 37 weeks of gestation. The median gestational age at delivery was 37.5 weeks (IQR:1.75), with a median birth weight of 3155g (IQR:575). The median gestational length after CC was 21 weeks (IQR:5.00). Of the patients who delivered after 24 weeks gestation, 65.8% had a vaginal delivery and 34.2 had a cesarean section. The indication for CC was based on OH in 19 patients (46.3%), on the combination of unfavorable OH and cervical measurement on ultrasound in 16 patients (39.0%), and exclusively by US in 6 patients (14.6%). Unfortunately, premature births occurred in 9 cases (23.7%). However, the study had a favorable neonatal outcome, with a success rate of 90.3% (Table 1) and the clinical characteristics of the study groups are shown in Table 2.

**Table 1. Indication for CC and obstetric outcomes in pregnant women who underwent the procedure at the University Hospital of Western Paraná, from January 2020 to March 2024.**

	Number of cases (n)	Rate (%)
Indication:		
• OH	19	46.3%
• OH + US	16	39.0%
• US	6	14.6%
Spontaneous abortion/fetal death	4	9.7%
Premature birth (< 37 weeks gestation)	9	23.7%
• Extreme premature birth (< 28 weeks)	1	2.6%
• Very premature birth (between 28 and 31 weeks)	0	0.0%
• Moderate preterm birth (between 32 and 36 weeks)	8	21.1%
Full-term birth (≥ 37 weeks gestation)	29	76.3%
Gestational age at delivery (median)	41	37.5 weeks (IQR:1.75)
Birth weight (median)	41	3155 grams (IQR:575)
Duration of CC	41	21 weeks (IQR:5.00)
Vaginal delivery	25	65.8%
Cesarean section	13	34.2%

OH: obstetric history; US: ultrasound

**Table 2. Clinical and ultrasound characteristics of the study population**

	CC indicated by OH (n=19)	CC indicated by OH + US (n=16)	CC indicated by US (n=6)	P-value (<.05)
Number of patients	19 (46.3%)	16 (39.0%)	6 (14.6%)	<.001***
Maternal age (average in years)	31.5 (±5.38) <sup>a</sup>	29.9 (±6.37) <sup>c</sup>	21.0 (±3.52) <sup>ac</sup>	<.001*
Parity	1.00 (IQR:1.00)	1.00 (IQR:2.00)	0,00 (IQR:0.00)	.070**
• Nulliparous	4 (9.8%)	5 (12.2%)	5 (12.5%)	.019***
• Multiparous	7 (17.1%)	5 (12.2%)	1 (2.4%)	.651***
History of premature birth or miscarriage in the second half of life quarter	18 (43.9%)	12 (29.3%)	0 (0.0%)	<.001***
Maternal comorbidities	12 (31.6%)	11 (28.9%)	2 (5.3%)	.424***

Gestational age at CC (weeks)	15.0 (IQR: 5.00)	15.0 (IQR:3.00)	19.5 (IQR: 1.75)	.162**
History of conization	2 (4.9%)	6 (14.6%)	0 (0.0%)	.057***
Cervical length (average in mm)	33.0 ( $\pm 7.55$ ) <sup>ab</sup>	22.7 ( $\pm 4.08$ ) <sup>b</sup>	22.4 ( $\pm 3.85$ ) <sup>a</sup>	.002*
"Sludge" in ultrasound	0 (0.0%)	2 (4.9%)	0 (0.0%)	.193***

\*One-way ANOVA test and Tukey's post hoc test

\*\*Kruskal-Wallis test

\*\*\*Chi-square test

CC: cervical cerclage; OH: obstetric history; US: ultrasound.

Data are presented as mean and standard deviation, median and interquartile range (IQR), or n (%). a -  $P < 0.05$ , group indicated by history versus group indicated by ultrasound. b -  $P < 0.05$ , group indicated by history versus group indicated by history plus ultrasound. c -  $P < 0.05$ , group indicated by history plus ultrasound versus group indicated by ultrasound.

No statistically significant differences or associations were found between the three groups about parity, maternal comorbidities, gestational age at CC, history of conization, and sludge on ultrasound. However, of the two cases of sludge observed, one resulted in miscarriage in the second trimester (18 weeks) and the other in full-term delivery. Both cases belonged to the group with CC indicated by the combination of OH and US.

The factors that proved statistically significant or showed relevant associations include maternal age, nulliparity, history of premature births or spontaneous losses in the second trimester, and cervical length. In the group where CC was indicated only by echographic measurement, maternal age was statistically lower compared to the other two groups. On the other hand, cervical length was statistically higher in the group where CC was indicated only by OH. In addition, a significant association was observed between indications for CC and a history of premature birth or spontaneous loss in the second trimester. This association was stronger in the group where CC was indicated by OR alone and in the group where a combination of this history and cervical ultrasound measurement indicated CC. Additionally, nulliparity showed a significant association, particularly in cases where the US was the indication.

The pregnancy outcomes of the cases evaluated, as shown in Table 3, did not demonstrate statistically significant differences or associations across all the parameters assessed. These parameters include gestational age at miscarriage, gestational age at CC removal, gestational age at delivery (in weeks), duration of CC until delivery (in weeks), miscarriage/fetal death ( $< 22$  weeks), extremely preterm birth ( $< 28$  weeks), moderate preterm birth (between 32 and 36 weeks), preterm birth ( $\leq 37$  weeks), term birth ( $\geq 37$  weeks), type of birth (vaginal birth or cesarean section) and the measurement in use at delivery. In addition, there was no record of the incidence of very preterm birth (between 28 and 31 weeks). When compared using the Kaplan-Meier survival curve, the groups showed no significant difference ( $p=0.09$ ) in the duration of CC until delivery (Figure 1).

**Table 3. Pregnancy outcomes of the study population according to CC indications**

	CC indicated by OH (n=19)	CC indicated by OH US (n=16)	CC indicated by US (n=6)	P-value ( $<.05$ )
Gestational age in spontaneous abortion	19 (IQR:0,00)	19 (IQR:1.00)	NaN	1.000*
Gestational age at the removal of CC (weeks)	36.0 (IQR:1.00)	37.0 (IQR:1.00)	36.5 (IQR:1.00)	.761*
Gestational age at delivery (weeks)	37.0 (IQR:1.75)	38.0 (IQR:1.00)	38.5 (IQR:2.50)	.664*

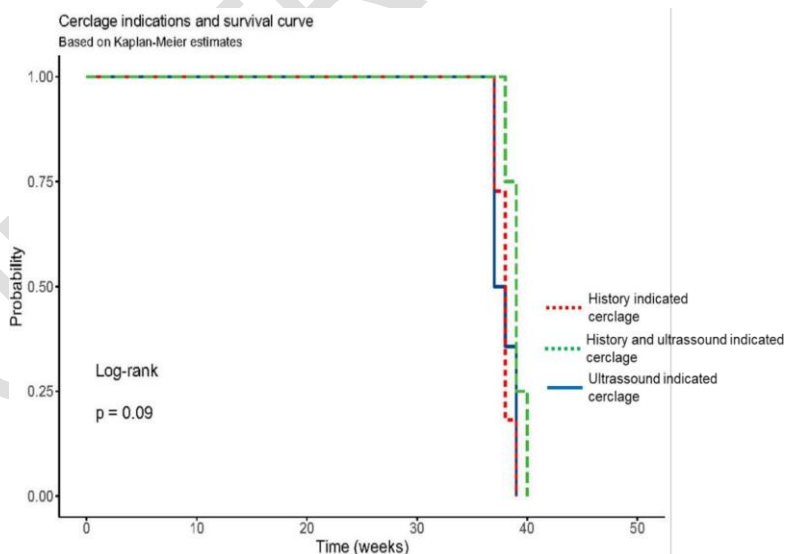
Duration of CC until delivery (weeks)	21.0 (IQR:5.75)	22.0 (IQR:1.75)	17.0 (IQR:2.00)	.143*
Fetal death (< 22 weeks)	1.0 (2.4%)	2.0 (4.9%)	0.0 (0.0%)	.542**
Extreme premature birth (< 28 weeks)	1.0 (2.6%)	0.0 (0.0%)	0.0 (0.0%)	.565**
Very premature birth (between 28 and 31 weeks)	0.0 (0.0%)	0.0 (0.0%)	0.0 (0.0%)	NaN
Moderate preterm birth (between 32 and 36 weeks)	3.0 (7.9%)	3.0 (7.9%)	2.0 (5.3%)	.686**
Premature birth (< 37 weeks)	4 (10.5%)	3 (7.9%)	2 (5.3%)	.831**
Full-term birth (≥ 37 weeks)	14 (36.8%)	11 (28.9%)	4 (10.5%)	.831**
Type of delivery				
• Vaginal delivery	11 (28.9%)	10 (26.3%)	4 (10.5%)	.829**
• Caesarean section	7 (18.4%)	4 (10.5%)	2 (5.3%)	.829**
Medication in use during childbirth	14 (35.9%)	15 (38.5%)	4 (10.3%)	.276**

\*Kruskal-Wallis test

\*\*Chi-Square test

CC: cervical cerclage; OH: obstetric history; US: ultrasound.

Data is presented as median and interquartile range (IQR) or n (%).



**Figure 1. Kaplan-Meier survival curve of gestational age at delivery, comparing patients with different indications**

The neonatal outcomes of the study groups, detailed in Table 4, revealed no statistically significant differences or associations in all the parameters evaluated. These parameters include birth weight, neonatal birth weight less than 2500g, APGAR scores less than 7 at the first and fifth minutes, the need for NICU admission, and neonatal mortality.

However, there were cases of spontaneous loss before the 22nd week of pregnancy in some groups. Specifically, one patient (2.4%) from the group indicated by OH and two (4.9%) from the group indicated by the combination of OH and US. As these events occurred before the 22nd week, the results of these patients were not included in the statistical analysis of perinatal outcomes.

**Table 4 Perinatal outcomes of newborns according to CC indications**

	CC indicated by OH (n=18)	CC indicated by OH + US (n=14)	CC indicated by US (n=6)	P-value (<.05)
Birth weight (g)	3105(IQR:605)	3215(IQR:471)	2985 (IQR:478)	.389*
PNM (< 2500 g)	2.0 (5.4%)	2.0 (5.4%)	2.0 (5.4%)	.454**
APGAR < 7 on the 1 <sup>st</sup> minute	2.0 (5.4%)	3.0 (8.1%)	0.0 (0.0%)	.421**
APGAR < 7 on the 5 <sup>th</sup> minute	0.0 (0.0%)	1.0 (2.7%)	0.0 (0.0%)	.430**
Admission to the NICU	0.0 (0.0%)	2.0 (0.0%)	0.0 (0.0%)	.176**
Perinatal mortality	1.0 (2.6%)	0.0 (0.0%)	0.0 (0.0%)	.565**

\*Kruskal-Wallis test

\*\*Chi-Square test

CC: cervical cerclage; OH: obstetric history; US: ultrasound.

Data are presented as median and interquartile range (IQR) or n (%). Low birth weight (LBW), Neonatal Intensive Care Unit (NICU).

#### 4. DISCUSSION

This study broadened the understanding of the results of CC, highlighting the indications for its performance. It found that gestational and perinatal outcomes after CC showed no statistically significant differences, regardless of the indication used, whether based on unfavorable obstetric history, ultrasound measurement of the cervix below 25.0 mm in the second trimester, or the combination of both. These results corroborate the findings of Golbasi et al (2022) [7] and Ikechebelu et al (2023) [4] and reinforce the consistency of the evidence regarding the efficacy of CC, regardless of the indication criteria used.

It is important to consider that 9.7% of the pregnant women included in the study had a miscarriage or perinatal mortality as a gestational outcome. Notably, the CC indicated by OH and US had a slightly higher incidence of miscarriage, at 4.9% compared to 2.4% by OH alone and 0.0% by US alone; different from perinatal mortality, with 2.6% by OH compared to 0.0% by the other groups. Berghella & Mackeen (2011) [20] observed a higher perinatal mortality rate (5% versus 3%) in pregnant women undergoing CC indicated by the US compared to those indicated only by OH.

The rates of preterm birth (< 37 weeks) were similar between the groups, totaling 23.7% overall, with rates of 10.5%, 5.3%, and 7.9% in the CC groups indicated solely by OH, US alone, or a combination of both, respectively. These figures reinforce the effectiveness of CC in promoting maternal and neonatal health [4,7], with more promising results than those found in the meta-analysis carried out by Berghella & Mackeen (2011) [20]. In their analysis, which compared the outcomes of single pregnancies with a history of previous preterm birth, the pregnant women were submitted to CC by echographic indication in cases of short cervical length or CC indicated only by obstetric history. The indication of CC due to the presence of short cervical length had similar incidences of preterm birth before 37 weeks (31% compared to 32%) compared to CC indicated by obstetric history alone. Although CC is an effective intervention, it is crucial to maintain continuous surveillance and close prenatal follow-up in these high-risk pregnancies [11].

No statistically significant association was found between the different indications for CC and favorable pregnancy outcomes. However, the indication for CC by combining OH and US of the cervix allows for a more personalized and targeted intervention.

The benefits of CC based on OH and US on perinatal and neonatal outcomes have been demonstrated in previous studies[7,21,22], corroborating the findings of this study. For example, Golbasi et al (2022) [7] and Krispin et al (2019)[22] found that, when examining the perinatal outcomes of CC, those obtained from the physical examination were inferior compared to the methods of indication by obstetric history and ultrasound, although no statistically significant difference was found between the results of the latter two methods. In addition, Korb et al (2017)[23] demonstrated a reduction in the rate of births before 24 weeks and in neonatal mortality in cases with cervical shortening, identified both in the US and in the history of preterm birth. In addition, the meta-analysis carried out by Alfrevic Z (2017)[14] showed the positive effect of CC indicated by the US on pregnancy outcomes.

This study showed a higher prevalence of CC based on OH and the OH-US combination, compared to the indication by the US alone, with no statistically significant difference between these groups. This finding is in line with previous studies, which have also found a higher frequency of CC indicated by history than other indications[4,7,10]. This scenario can be explained by the fact that pregnant women with a history of miscarriage in the second trimester, premature birth, or multiparous women tend to seek treatment earlier than nulliparous women, which may have led to an increase in the number of women seeking treatment incidence of this form of indication[4]. This early search results in a significantly higher average maternal age among patients with CC indicated by history and in combination with ultrasound, compared to those whose indication was by ultrasound alone. The latter are usually primigravidas, reflecting a younger maternal age.

With technological advances and improvements in first-trimester ultrasound examination, the frequency of ultrasound-indicated CC is expected to increase. Currently, it is recommended that all obstetric patients have a routine transvaginal ultrasound in the first trimester, to ensure an early diagnosis or to direct their serial follow-up until the period of greatest sensitivity of the test (from 22 to 24 weeks), to facilitate surgical indication and the prevention of premature birth[4].

In addition, the group for whom CC was indicated by history alone had a significantly longer average cervical length before the procedure, with an average of 33.0 mm ( $\pm 7.55$ ) compared to those who received CC indicated by the history-echography combination and those indicated by ultrasound alone, whose averages were 22.7 mm ( $\pm 4.08$ ) and 22.4 mm ( $\pm 3.85$ ), respectively. These findings are in line with the recommendations of international societies such as the American College of Obstetricians and Gynecologists (ACOG)[8], the Royal College of Obstetricians and Gynaecologists (RCOG)[11], and the Society of Obstetricians and Gynecologists of Canada (SOGC)[9]. These organizations have established specific guidelines for the practice of CC, emphasizing its importance when indicated by cervical measurement in women with a history of spontaneous preterm labor and a cervical length of less than 25.0 mm in the second trimester[8,9,11].

Cervical length is recognized as one of the best predictors of preterm birth. As cervical length decreases, the estimated risk of preterm birth increases exponentially: from approximately 0.2% at 60 mm to 0.8% at 30 mm, 4.0% at 15 mm, and 78% at 5 mm[24]. In addition, it was observed that the risk of spontaneous preterm birth before 35 weeks decreased by approximately 6% for each additional millimeter of cervical length[25]. Patients with a cervical length of 15 mm have almost a 50% risk of early preterm birth, and CC in these cases was associated with a 10-fold reduction in the rate of preterm birth[26].

This study found that CC was performed earlier in the group indicated by obstetric history and short cervix on ultrasound (15 weeks), compared to the group indicated only by cervical measurement (19.5 weeks), although this difference was not statistically significant. According to Golbasi et al (2022)[7], this situation can be explained by the fact that in the group indicated by obstetric history and its association with cervical measurement, the risk of preterm delivery was reinforced by the patients' unfavorable history, leading them to undergo CC before significant cervical changes occurred. This may have contributed to the favorable outcome of these pregnancies. On the other hand, in the group with an indication based solely on cervical measurement, CC was only performed after cervical alterations had been detected, which could limit its effectiveness[7].

Therefore, it is possible that the timing of CC plays a crucial role in satisfactory pregnancy outcomes, indicating that early intervention, preferably at the end of the first trimester or the beginning of the second (12 to 14 weeks of gestation), regardless of the type of indication, can improve the outcomes of pregnant women with CI, especially in terms of full-term deliveries[4,7,9,11,27].

This finding underscores the importance of thoroughly evaluating all pregnant women for CI during the first or early second trimester of pregnancy. [7]. When patients with a history of CI are identified, CC can be performed early based on the clinical history. This procedure is in line with previous studies, which also highlighted that the groups indicated by cervical ultrasound measurement and obstetric history had better gestational outcomes, such as gestational age at delivery, APGAR scores, and fetal survival rate, compared to the group indicated by physical examination[7,28].

In terms of miscarriage ( $p = 0.542$ ) and preterm birth ( $p = 0.831$ ), no statistically significant difference was found between the three groups in this study, a result consistent with the observations of Golbasi et al (2022)[7] and Ikechebelu et al (2023)[4]. This result can be attributed to the similar average gestational age at which CC was performed in the three groups[4].

When analyzing gestational age at the time of delivery, the group that underwent CC based on obstetric history alone had a slightly lower gestational age, with a median of 37.0 weeks (IQR: 1.75,  $p=0.664$ ). However, this difference was not statistically significant, as the group who underwent CC according to the other criteria had a gestational age at delivery that was only one and a half weeks longer. These findings, which may initially appear contradictory, are consistent with previous studies [7]. This highlights the complexity and need for ongoing research in this area since preterm birth is a multifaceted syndrome, where several causes can interact for its occurrence[29].

In this study, similar to others[7,27], pregnant women with CC indicated by obstetric history had a higher rate of full-term deliveries, although without statistical significance ( $P > 0.05$ ). On the other hand, an opposite result was found by Ikechebelu et al (2023)[4], where transvaginal ultrasound was performed in the first trimester, allowing for an early diagnosis of CI and an earlier CC intervention in the second trimester. The application of CC at this early stage may have contributed to a higher success rate of CC indicated by cervical measurement[4].

An encouraging aspect was the lack of statistically significant differences in perinatal outcomes among the various study groups. This suggests that the indication for CC did not significantly impact perinatal outcomes, including birth weight, APGAR scores, NICU admission, and neonatal mortality. Similar results were found by Ikechebelu et al (2023)[4], who recommended that, whenever necessary, CC should be performed to treat CI, to achieve better neonatal outcomes[4].

The median birth weight of the newborns in the group indicated by history and history-ultrasound was higher than in the group indicated by ultrasound (3105g, IQR: 605g vs. 3215g, IQR: 471g vs. 2985g, IQR: 478g). However, this difference was not statistically significant. These results differ from the study by Golbasi et al (2022)[7], which reported average weights of  $2.500g \pm 0.967g$  (OH) vs.  $2.645g \pm 0.814g$  (US), also without finding a significant difference. It is worth noting that, in the previous study, gestational age at delivery was lower than in this study, with averages of  $34.9 \pm 5.3$  weeks and  $36.1 \pm 4.2$  weeks, respectively, compared to the medians of 37.0 weeks (IQR: 1.00), 38.0 weeks (IQR: 2.50) and 38.5 weeks (IQR: 2.50) in this one. The more premature the birth, the lower the weight of the newborn, increasing the risks associated with prematurity. This reinforces the importance of early diagnosis of CI and the application of CC to improve pregnancy outcomes and ensure a more favorable outcome for both mother and newborn[4,28].

The main limitations of this study include its retrospective nature, the relatively small sample size, and the absence of a control group, which may compromise the reliability of the results. The use of a survival curve as a statistical estimate may not accurately reflect the real probability of survival. In addition, it was not possible to measure some known confounding factors for preterm birth, such as ethnicity, socioeconomic status, body mass index, uterine anomalies, medication use, and maternal systemic morbidities. However, it is important to note that two-thirds of preterm births occur in women without identifiable risk factors, which makes it difficult to establish causality and effective interventions<sup>7</sup>. Despite these limitations, the study groups had similar baseline characteristics, reducing the impact of these factors on the study.

Positive aspects include consistent management of all patients under the same treatment protocols at a single tertiary hospital. In addition, the direct collection of detailed information on pregnancy losses and preterm births from hospital records ensured reliable data. Carrying out the study retrospectively, without the need for prior consent from the participants, made it possible to include all the cases identified, eliminating selection bias and enabling a thorough analysis of each case. This provided the opportunity to analyze each case in detail.

Thus, the indication for OH is important for pregnant women who have a history of more than one second-trimester pregnancy loss or premature birth, US for measuring the cervix is particularly relevant for nulliparous patients. The indication that combines both is also advantageous for pregnant women who have a history of one second-trimester pregnancy loss or premature birth, allowing for a more personalized and targeted intervention with closer monitoring. Therefore, CC, when performed early, regardless of the indication, can be an effective strategy for preventing premature births and improving perinatal outcomes. This suggests the importance of performing CC electively, before the onset of

PTL and at the onset of cervical changes, rather than when CI is already advanced, reinforcing the relevance of CC in obstetric practice.

## 5. CONCLUSION

In this study, the efficacy and results of CC were compared based on the indication, whether it was OH, US of cervical measurement, or both. All indications proved to be effective in reducing the risk of preterm birth. The results revealed that there were no statistically significant differences in gestational and perinatal outcomes among the different indications. It is recommended to consider early application of CC before cervical changes associated with CI occur. It is also suggested that all pregnant women undergo a standardized and early transvaginal US examination to identify those who may require CC. In addition, for a more comprehensive assessment, it is recommended that a large prospective, randomized, controlled clinical trial before generalizing these results.

## ETHICAL APPROVAL

The study was submitted to the Ethics Committee for Research with Human Subjects (CEP) of the Western Paraná State University – UNIOESTE (Cascavel, Paraná, Brazil), and its approval was obtained under protocol number 6.544.745/CAAE 75724923.5.0000.0107.

## REFERENCES

1. Abdallah W. Updates on laparoscopic cervical cerclage: obstetric outcomes and surgical techniques. *Future Sci. OA.* 2023; 9(8):FSO885. DOI 10.2144/foa-2023-0051. PMID: 37621845.
2. Giouleka S, Boureka E, Tsakiridis I, Siargkas A, Mamopoulos A, Kalogiannidis I, Athanasiadis A, Dagklis T. Cervical Cerclage: A Comprehensive Review of Major Guidelines. *Obstet. Gynecol. Surv.* 2023; 78(9):544–553. DOI 10.1097/OGX.0000000000001182.
3. Gulersen M, Lenchner E, Nicolaidis KH, Otsuki K, Rust OA, Althuisius S, Bornstein E, Berghella V. Cervical cerclage for short cervix at 24 to 26 weeks of gestation: systematic review and meta-analysis of randomized controlled trials using individual patient-level data. *American Journal of Obstetrics & Gynecology MFM.* 2023; 5(6):100930. DOI 10.1016/j.ajogmf.2023.100930. PMID: 36924844.
4. Ikechebelu JI, Dim CC, Okpala BC, Eleje GU, Joe-Ikechebelu NN, Malachy DE, Nnoruka CM, Nwajiaku LA, Okam PC, Albert IC, Okpala AN, Igbo-dike EP. Comparison of Pregnancy Outcomes of History-Indicated and Ultrasound-Indicated Cervical Cerclage: A Retrospective Cohort Study. *BioMed Research International.* 2023; 2023:8782854. DOI 10.1155/2023/8782854. PMID: 36654867.
5. Chawla D, Agarwal R. Preterm births and deaths: from counting to classification. *The Lancet Global Health.* 2022; 10(11):e1537-e1538. DOI 10.1016/S2214-109X(22)00422-3. PMID: 36240810.
6. Ohuma EO, Moller A-B, Bradley E, Chakwera S, Hussain-Alkhateeb L, Lewin A, Okwaraji YB, Mahanani WR, Johansson EW, Lavin T, Fernandez DE, Domínguez GG, et al. National, regional, and global estimates of preterm birth in 2020, with trends from 2010: a systematic analysis. *Lancet.* 2023; 402(10409):1261–1271. DOI 10.1016/S0140-6736(23)00878-4. PMID: 37805217.
7. Golbasi C, Golbasi H, Bayraktar B, Sever B, Vural T, Ekin A. Effectiveness and perinatal outcomes of history-indicated, ultrasound-indicated and physical examination-indicated cerclage: a retrospective study. *BMC Pregnancy and Childbirth.* 2022; 22(1):217. DOI 10.1186/s12884-022-04557-7. PMID: 35300640.
8. American College of Obstetricians and Gynecologists. ACOG Practice Bulletin No.142: cerclage for the management of cervical insufficiency. *Obstet Gynecol.* 2014; 123(2 Pt 1):372.
9. Brown R, Gagnon R, Delisle M-F. No. 373-Cervical Insufficiency and Cervical Cerclage. *Journal of Obstetrics and Gynaecology Canada.* 2019; 41(2):233–247. DOI 10.1016/j.jogc.2018.08.009. PMID: 30638557.

10. Seyama R, Makino S, Takeda J, Takeda S, Itakura A. The retrospective study for effectiveness of cervical cerclage in preventing recurrent preterm birth. *Taiwan. J. Obstet. Gynecol.* 2022; 61(1):63–69. DOI 10.1016/j.tjog.2021.11.012. PMID: 35181048.
11. Shennan AH, Story L. Cervical Cerclage: Green-top Guideline No. 75. *BJOG: An International Journal of Obstetrics and Gynaecology.* 2022; 129(7):1178–1210. DOI 10.1111/1471-0528.17003. PMID: 35199905.
12. Saccone G, Maruotti GM, Giudicepietro A, Martinelli P. Effect of Cervical Pessary on Spontaneous Preterm Birth in Women With Singleton Pregnancies and Short Cervical Length: A Randomized Clinical Trial. *JAMA.* 2017; 318(23):2317–2324. DOI 10.1001/jama.2017.18956. PMID: 29260226.
13. Conde-Agudelo A, Romero R, Da Fonseca E, O'Brien JM, Cetingoz E, Creasy GW, Hassan SS, Erez O, Pacora P, Nicolaides KH. Vaginal progesterone is as effective as cervical cerclage to prevent preterm birth in women with a singleton gestation, previous spontaneous preterm birth, and a short cervix: updated indirect comparison meta-analysis. *Am J Obstet Gynecol.* 2018; 219(1):10–25. DOI 10.1016/j.ajog.2018.03.028. PMID: 29630885.
14. Alfirevic Z. Cervical stitch (cerclage) for preventing preterm birth in singleton pregnancy. *Cochrane Database Syst Rev.* 2017; 6.
15. Harper LM, Owen J. Cervical Insufficiency. *GLOWM.* 2017. DOI 10.3843/GLOWM.10190.
16. Okuhara M, Tsuda H, Nishiko Y, Fuma K, Kuribayashi M, Tezuka A, Ando T, Mizuno K. The efficacy of therapeutic cervical cerclage in singleton pregnancies: a retrospective study. *J. Matern. Fetal Neonatal Med.* 2022; 35(25):6267–6271. DOI 10.1080/14767058.2021.1910663. PMID: 33843437.
17. Harpham ME, Algert CS, Roberts CL, Ford JB, Shand AW. Cervical cerclage placed before 14 weeks gestation in women with one previous midtrimester loss: A population-based cohort study. *Australian and New Zealand Journal of Obstetrics and Gynaecology.* 2017; 57(6):593–598. DOI 10.1111/ajo.12635. PMID: 28508414.
18. Frey HA, Klebanoff MA. The epidemiology, etiology, and costs of preterm birth. *Semin. Fetal Neonatal Med.* 2016; 21(2):68–73. DOI 10.1016/j.siny.2015.12.011. PMID: 26794420.
19. Ehni H-J, Wiesing U. The Declaration of Helsinki in bioethics literature since the last revision in 2013. *Bioethics.* 2024. DOI 10.1111/bioe.13270. PMID: 38367022.
20. Berghella V, Mackeen AD. Cervical length screening with ultrasound-indicated cerclage compared with history-indicated cerclage for prevention of preterm birth: a meta-analysis. *Obstet. Gynecol.* 2011; 118(1):148–155. DOI 10.1097/AOG.0b013e31821fd5b0. PMID: 21691173.
21. Liu Y, Ke Z, Liao W, Chen H, Wei S, Lai X, Chen X. Pregnancy outcomes and superiorities of prophylactic cervical cerclage and therapeutic cervical cerclage in cervical insufficiency pregnant women. *Archives of Gynecology and Obstetrics.* 2018; 297(6):1503–1508. DOI 10.1007/s00404-018-4766-9. PMID: 29627847.
22. Krispin E, Danieli-Gruber S, Hadar E, Gingold A, Wiznitzer A, Tenenbaum-Gavish K. Primary, secondary, and tertiary preventions of preterm birth with cervical cerclage. *Archives of Gynecology and Obstetrics.* 2019; 300(2):305–312. DOI 10.1007/s00404-019-05184-y. PMID: 31056734.
23. Korb D, Marzouk P, Deu J, Oury J-F, Sibony O. Effectiveness of elective cervical cerclage according to obstetric history. *Journal of Gynecology Obstetrics and Human Reproduction.* 2017; 46(1):53–59. DOI 10.1016/j.jgyn.2016.09.006. PMID: 28403957.
24. Chen R, Huang X, Li N, Li B. Analysis of pregnancy outcomes in patients undergoing ultrasound-indicated cerclage and identification the influence factors for predicting preterm birth: A retrospective study of 87 cases. *Taiwan. J. Obstet. Gynecol.* 2023; 62(2):304–310. DOI 10.1016/j.tjog.2022.10.010. PMID: 36965900.
25. Berghella V, Ciardulli A, Rust OA, To M, Otsuki K, Althuisius S, Nicolaides KH, Roman A, Saccone G. Cerclage for sonographic short cervix in singleton gestations without prior spontaneous preterm birth: systematic review and meta-analysis of randomized controlled trials using individual patient-level data. *Ultrasound Obstet. Gynecol.* 2017; 50(5):569–577. DOI 10.1002/uog.17457. PMID: 28295722.

26. Hassan SS, Romero R, Berry SM, Dang K, Blackwell SC, Treadwell MC, Wolfe HM. Patients with an ultrasonographic cervical length  $\leq$  15 mm have nearly a 50% risk of early spontaneous preterm delivery. *American Journal of Obstetrics and Gynecology*. 2000; 182(6):1458–1467. DOI 10.1067/mob.2000.106851. PMID: 10871466.
27. Lu C, Lim B, Robson SJ. Increasing Incidence Rate of Cervical Cerclage in Pregnancy in Australia: A Population-Based Study. *Healthcare*. 2016; 4(3):68. DOI 10.3390/healthcare4030068. PMID: 27626455.
28. Chen R, Huang X, Li B. Pregnancy outcomes and factors affecting the clinical effects of cervical cerclage when used for different indications: A retrospective study of 326 cases. *Taiwan. J. Obstet. Gynecol.* 2020; 59(1):28–33. DOI 10.1016/j.tjog.2019.11.004. PMID: 32039796.
29. Romero R, Dey SK, Fisher SJ. Preterm labor: one syndrome, many causes. *Science*. 2014; 345(6198):760–765. DOI 10.1126/science.1251816. PMID: 25124429.

UNDER PEER REVIEW