

IMPACT OF PADDY STRAW INCORPORATION ALONG WITH DIFFERENT FERTILIZER DOSES ON MINERAL N DYNAMICS AND GHG EMISSIONS

ABSTRACT

Aim: An incubation experiment was conducted, which aimed to investigate NH_4^+ and NO_3^- release pattern and GHG emissions as influenced by paddy residue decomposition with time over a 120-day period.

Study design: Completely randomized block design

Place and duration of study: The study was conducted at Agrometeorology laboratory, CRIDA, Hyderabad. The experiment was conducted between 2021-22.

Methodology: Sampling was done on 2, 4, 6, 8, 10, 20, 30, 45, 60, 75, 90, 105 and 120 days after incubation (DAI). The treatments included control (T_1), soil + N (T_2), paddy residue + 100% RDN - 33:33:33 (T_3), paddy residue + 100% RDN - 43:23:33 (T_4), paddy residue + 100% RDN - 43:33:23 (T_5), paddy residue + 10% extra RDN - 43:23:33 (T_6). Fertilizer N was applied in three splits (first at initiation of experiment, second and third at 30 and 60 DAI respectively).

Results: Residue incorporation along with inorganic fertilizer significantly influenced NH_4^+ - N and NO_3^- - N, as well as GHG emissions. After addition of each split, there was an increase in NH_4^+ - N and NO_3^- - N contents. Significantly higher NH_4^+ - N and NO_3^- - N was recorded in T_6 , compared to other treatments. The cumulative CO_2 and N_2O emissions were significantly higher in paddy residue + 10% extra RDN - 43:23:33 *i.e.*, $296.63 \mu\text{g C g}^{-1}$ of soil and $1.81 \mu\text{g N g}^{-1}$ of soil respectively, while lowest was observed in control.

Key Words: Residue incorporation, Cumulative emissions, NH_4^+ - N, NO_3^- - N, Residue decomposition

Introduction:

Rice stands out as the predominant crop residue producer in Asia, contributing a substantial 826 million tons, which makes up 84% of the world's total production. Traditionally, rice straw is harvested from fields in South Asia for utilization as cattle feed and various other purposes. On an average, rice crop residues contain 0.7% N, 0.23% P and 1.75% K. Therefore, the amount of NPK contained in rice crop residues produced is about 22.13×10^6 and $26.26 \times 10^6 \text{ t year}^{-1}$ in Asia and the world, respectively [1]. From the perspective of farmers, burning is perceived as the most suitable method for rice straw disposal, not only due to its cost-effectiveness but also for its effectiveness as a pest control measure [2].

The rapid decomposition of soil organic matter, leading to a swift loss of nitrogen, poses a significant challenge in maintaining soil fertility and raises environmental concerns. The application of water-soluble nitrogen fertilizers results in increased levels of available nitrogen, surpassing plant requirements, particularly early in the crop growth season. This excess nitrogen has the potential for loss, contributing to the generation of NO_x gases, including nitrous oxide (N_2O), a greenhouse gas associated with global warming. The likelihood of N_2O production from the soil is contingent upon favorable denitrification conditions, such as temperature, soil moisture, organic carbon levels and pH, emphasizing the intricate interplay between nitrogen management and environmental impacts [3].

A synchrony between soil N availability and plant N requirement is highly essential and also serves as an important factor contributing to increased plant N uptake and grain yields. As the most of the rice residue is being burnt before taking up the succeeding crop, it is leading to release of GHG emissions and environmental hazards. So, efficient management of rice residue is of major concern. Residue incorporation serves as one of the best residue management options, which improves soil fertility and reduces environmental pollution.

The C/N ratio of organic material is commonly considered as a pivotal factor in predicting net nitrogen (N) immobilization or mineralization during the decomposition of residues. The quality of the residue plays a crucial role in influencing decomposition, and by carefully managing the balance between N mineralization and immobilization, it is possible to regulate this process. Hence, strategically incorporating nitrogen fertilizer along with low-quality crop residues (residues having C:N ratio > 30:1) holds promise for effectively curbing nitrogen losses [4]. The initial decline in mineral nitrogen (N) status, due to immobilization resulting from the incorporation of crop residues with a high carbon-to-nitrogen (C/N) ratio, may contribute to a reduction in subsequent nitrous oxide (N_2O) emissions. When the residues are incorporated along with inorganic fertilizer, immobilization followed by re-mineralization of mineral N occurs, which means that, after the initial immobilization, the mineral N is released back into the soil. Many previous studies proved that when wheat straw is incorporated along with inorganic N fertilizer, there was initial N mineralization, followed by release of N in later stages [5].

Agricultural management practices exert profound influence on soil CO_2 emissions through modifications in the soil environment, encompassing parameters such as soil aeration, pH levels, moisture content, temperature and C/N ratios. These inherent characteristics of the soil environment play a pivotal role in modulating microbial activity and the decomposition mechanisms which are responsible for the conversion of plant-derived carbon into soil organic matter and subsequent release of CO_2 . Crop residues with high C:N ratio, when incorporated into soil, C mineralization occurs, which also leads to GHG

emissions. Therefore, we had conducted an incubation study, with an objective to examine the release patterns of NH_4^+ -N and NO_3^- -N and also to investigate the GHG emissions (CO_2 , CH_4 and N_2O), after incorporation of paddy straw with various changed split doses of inorganic nitrogen, throughout the incubation period.

Materials and Methods:

Soil and Crop residues:

The soil used for incubation study was collected from B block of college farm, College of Agriculture, Rajendranagar, PJTSAU, which is located in Rangareddy district of Telangana state at an altitude of 542.6 m above mean sea level ($78^{\circ}23'$ °E longitude and $17^{\circ}19'$ N latitude). The weekly mean maximum temperature during the crop growth period in *Rabi* 2020-21 ranged from 29.5°C to 38.1°C with an average of 34.9°C , while the weekly mean minimum temperature ranged from 11.2°C to 25.3°C with an average of 19.3°C . The soil for the incubation experiment was collected from the maize experimental field. Soil samples were combined, homogenized, sieved (2 mm), and pre-incubated, and residues were collected, oven dried at 65°C in a hot air oven, and crushed with a willey mill before sieving through a 2 mm sieve. The residues were then biochemically characterised using appropriate techniques (Table 1). The texture of soil was sandy clay loam, with pH of 7.9, EC of 1.14 dSm^{-1} , organic carbon of 0.72% and had a C:N ratio of 16:1.

Incubation:

The experiment was conducted by taking 100 g of the soil in 150 ml plastic cups and the soil was kept at field capacity by adding 13 ml of distilled water and kept in dark for 10 days for pre-incubation. Pre-incubation was done prior to the start of incubation experiment to initiate microbial activity in the soil.

After pre-incubation, 0.18g powdered paddy straw was mixed thoroughly to soil as per treatments and urea was added along with distilled water into the soil. After treatment imposition, the beakers were incubated at room temperature for 120 days.

The entire experiment was repeated so as to collect greenhouse gas emissions from one set and second set was used to monitor mineralization with destructive sampling at given intervals and the samples were used for analysis of NH_4^+ -N, NO_3^- -N, C:N ratio and available N. The constant soil moisture content of the experiment was maintained throughout the experimental period. Details of treatments is mentioned in Table 2.

Table 1: Properties of paddy residue used in the lab study:

S.No.	Particulars	Values
1	Lignin (%)	24.7
2	Cellulose (%)	35.0
3	Hemicellulose (%)	13.6
4	Total C (%)	48.98
5	Total N (%)	0.66
6	C:N	74.21
7	ADF (%)	43.6
8	Ash (%)	15.53
9	Proteins (%)	4.12
10	Total phenols (mg GAE / 100 g)	31.03

Table 2. Treatment details:

T ₁	Control (Soil only without residue and nitrogen)
T ₂	Soil + RDN in normal 3 splits (33:33:33)
T ₃	Crop residue incorporation + RDN in normal 3 splits (33:33:33)
T ₄	Crop residue incorporation + 100 % RDN but with changed quantities <i>i.e.</i> ,43:23:
T ₅	Crop residue incorporation + 100 % RDN but with changed quantities <i>i.e.</i> ,43:33:23
T ₆	Crop residue incorporation + 10 % extra N with changed quantities during crop growth <i>i.e.</i> , 43:33:33

***Note:** Rate of paddy straw added to 100g soil was based on top residue available from the *kharif* crop that is possible to deploy in succeeding *rabi* (maize) crop.

The treatments were replicated thrice and were laid out in Completely Randomized Design (CRD) Sampling was done on 2, 4, 6, 8, 10, 20, 30, 45, 60, 75, 90, 105, 120 days after incubation

NH₄⁺, NO₃⁻ and GHG emissions:

Ten grams of soil was shaken with 100 ml of 2 M KCl for an hour and filtered. Then the filtrate was steam distilled in presence of 0.2 g MgO. The distillate was collected in 4% boric acid containing mixed indicator was titrated with standard sulphuric acid (0.02 N) as described by [6] and expressed in mg kg⁻¹. After removal of NH₄-N⁺ from the sample, the distillation flask was removed and then 0.2 g Devarda's alloy was added immediately and steam distillation was done. The distillate was collected in 4% boric acid containing mixed indicator was titrated with standard sulphuric acid (0.02 N) as described by [6] and expressed in mg kg⁻¹.

100g of soil (2mm sieved) was taken in plastic cups to which urea (as per treatments) and paddy residue (0.18g) was added. Then bulk density was adjusted to 1Mg m⁻³. Moisture was added to bring the

soil samples to FC. Constant moisture content of the set was maintained in the soil throughout the experiment. Plastic cups were positioned within a gallon jar, with a small amount of water at the bottom of the jar to maintain soil moisture. Gas samples were collected using an airtight three-way stopcock syringe (60 ml capacity) from the headspace of the jar and then injected into pre-evacuated extainer vials at specific intervals of 2,4,6,8,10,20,30,45,60,75,90 and 120 days after incubation (DAI) for analysis using an autoanalyzer. The concentrations of N₂O, CO₂ and CH₄ gases were simultaneously analyzed using a modified gas chromatography instrument (Bruker 450) equipped with three detectors: FID, ECD, and TCD. Nitrous oxide was separated by two stainless steel columns (column-1: 1 m length, 2.2 mm i.d.; column-2: 3 m length, 2.2 mm i.d.) packed with 80–100 mesh porapak Q and detected by ECD. Carbon dioxide was separated by a single stainless steel column (2 m length, 2.2 mm i.d.) packed with 50–80 mesh porapak Q, and then hydrogen reduced CO₂ to CH₄ in a Nickel catalytic converter at 37.5°C, with CH₄ being detected by FID. The oven temperature was set at 55°C, the ECD operated at 330°C, and the FID at 220°C, respectively. Regular opening of the jars occurred at specified intervals to prevent CO₂ buildup. During the experiment, the CO₂ concentration was kept below 5%. The jars were opened, and the cups were briefly placed outside before being returned to the jars. Subsequently, the jars were flushed with ambient air for one minute.

The GWP of different treatments was calculated using the following equation [7], where the GWP for CO₂ is taken as 1.

$$\text{GWP} = \text{CH}_4 \times 21 + \text{N}_2\text{O} \times 298$$

Statistical Analysis:

All the data was subjected to statistical analysis using OPSTAT software. The critical difference for assessing the significance of treatment means was computed at a 5% level of probability.

Results and Discussion:

The effect of different nitrogen fertilizer doses along with paddy straw application on changes in mineral N status (NH₄⁺ and NO₃⁻) for each split dose of fertilizer was studied for 120 days, where the sampling was done on 2,4,6,8,10,20,30,45,60,75,90,105 and 120 DAI. The NH₄⁺ and NO₃⁻ content in soil under incubation was significantly influenced by different nitrogen fertilizer doses along with paddy straw application, throughout the incubation period (Table 3, 4 and Fig. 1).

Ammoniacal nitrogen (NH₄⁺ - N):

After application of first split dose of nitrogen along with paddy residue, the sampling was done on 2, 4, 6, 8, 10, 20 DAI (Fig. 1a). Here only basal dose of nitrogen was given. On day 2, application of paddy residue + 10 % extra RDN – 43:23:33 (T₆) recorded significantly higher NH₄⁺ - N (117.60 mg kg⁻¹), followed by soil +N (T₂) *i.e.*, 102.00 mg kg⁻¹ which was on par to paddy residue + 100 % RDN - 43:23:33 (T₄) and control (T₁) where the ammoniacal nitrogen was 97.00 and 97.00 mg kg⁻¹ respectively. The lowest NH₄⁺ - N was recorded in paddy residue + 100 % RDN - 33:33:33 (T₁) *i.e.*, 85.27 mg kg⁻¹. From day 1 to day 8, there was an increase in NH₄⁺ - N content in all treatments except control (T₁) and soil + N (T₂), where the NH₄⁺ - N content increased upto 10th day and later decreased throughout the incubation period. However in all the sampling dates after day 2, upto day 8 (4,6,8 DAI), T₆ recorded significantly higher NH₄⁺ - N (156.60, 174.13, 185.00 mg kg⁻¹ respectively). After day 8, the NH₄⁺ - N shown a decreasing trend upto day 30. T₆ recorded significantly higher NH₄⁺ - N from day 10 to day 30.

The effect of second split dose application on NH₄⁺ - N was studied from 30th day to 60th DAI *i.e.*, second split application was done on 30th day after the application of first split. The sampling was done on 30, 45 days after the application of second split. Among all the treatments, paddy residue + 10 % extra RDN – 43:23:33 (T₆) recorded significantly higher NH₄⁺ - N and the lowest NH₄⁺ - N was recorded in control (T₁). The NH₄⁺ - N in T₆ on 30th day was 85.47 mg kg⁻¹, later it was increased to 94.53 mg kg⁻¹ on 45th day.

The effect of third split dose application on NH₄⁺ - N was studied from 60th day to 120th DAI *i.e.*, third split application was done on 60th day after the application of first split. The sampling was done 60, 75, 90, 105, 120 days after incubation. Here all the three split doses were applied. Results indicated that the NH₄⁺ - N content increased from day 60 to day 75 and later it has decreased upto 120th day. The paddy residue + 10 % extra RDN - 43:23:33 (T₆) recorded highest NH₄⁺ - N and paddy residue + 100 % RDN - 43:33:23 (T₅) recorded lowest NH₄⁺ - N. There was approximately 22.48 % decrease in NH₄⁺ - N content from day 75 to day 120.

Increase in N concentration increased mineral N status. Application of fertilizer along with rice straw increased mineral-N (NH₄⁺ -N + NO₃⁻ -N) concentration compared with no-straw [8]. Initial increase in NH₄⁺ -N after the application of N fertilizer along with rice straw, from day 2 to day 8 might be due to increased ammonification. Thereafter NH₄⁺ -N showed a decreased trend which might be due to immobilization, as the rice straw had high C:N ratio (73:1), which caused immobilization. After the application of second split, there was slight increase in NH₄⁺ -N upto 45th day, which is due to increased mineralization and this continued even after application of third split (*i.e.*, upto 75th day) and later it has decreased due to increase in the nitrification.

Nitrate Nitrogen (NO₃⁻ - N):

The NO_3^- - N content on day 2 was higher in paddy residue + 10 % extra RDN - 43:23:33 (T_6) *i.e.*, 69.17 mg kg^{-1} which was on par to paddy residue + 100 % RDN - 43:33:23 (T_5) *i.e.*, 67.00 mg kg^{-1} , while the lowest NO_3^- - N was recorded in control (T_1) *i.e.*, 43.67 mg kg^{-1} (Fig. 4.1b). From day 4 to day 20, T_6 recorded higher NO_3^- - N at all the sampling dates. The NO_3^- - N content has shown an increasing trend from day 2 to day 20 and later it showed a decreasing trend upto day 30, in all the treatments except in soil + N (T_2), where there was increase in NO_3^- - N upto 30th day. The NO_3^- - N ranged from 65.23 to 87.83 mg kg^{-1} from day 1 to day 20.

The effect of second split dose application on NO_3^- - N content was studied from 30 to 60 DAI. On day 30, significantly higher NO_3^- - N was observed in soil + N (T_2) *i.e.*, 89.33 mg kg^{-1} . and the lowest NO_3^- - N was recorded in control (T_1) *i.e.*, (60.33 mg kg^{-1}). After the application of second split, the NO_3^- - N increased from day 30 to day 45, the increase was approximately 44.79 %.

The effect of third split dose application on NO_3^- - N content was studied from 60 to 120 DAI. On day 60, significantly higher NO_3^- - N was observed in soil + N (T_2) *i.e.*, (98.99 mg kg^{-1}), while the lowest NO_3^- - N was recorded in paddy residue + 100 % RDN - 43:33:23 (T_5) *i.e.*, (75.17 mg kg^{-1}). The NO_3^- - N increased from 60 to 90 DAI and later it had decreased from 90th to 120th day. Compared to T_6 , on an average, 60.80 % of lower NO_3^- - N was recorded in control (T_1) throughout the incubation period, after third split application.

The NO_3^- - N was significantly higher in T_6 , where extra nitrogen was applied. After the application of first split, from day 2 to day 20 there was increase in NO_3^- - N which is due to increased nitrification in those days. The aerated conditions and the moisture conditions in soil favoured multiplication of nitrifiers, which inturn enhanced nitrification process [9]. After 20th day, there was slight decrease in NO_3^- - N status, which was later increased after the application of second split dose *i.e.*, on 30th day. This increase in NO_3^- - N status is due to increase in total mineral nitrogen due to application of second split dose. Then from day 30 onwards NO_3^- - N status increased upto day 45, after which third split dose was applied. The NO_3^- - N status continued to increase upto the end of incubation period. This is due to continuous nitrification process of nitrogen from both fertilizer nitrogen as well as the nitrogen from residue decomposition. Among all the treatments containing nitrogen, soil + N (T_2) recorded highest NO_3^- - N by the end of the experiment. This may be attributed to the apparent immobilization of nitrogen in the treatments where both paddy straw and nitrogen were applied [10].

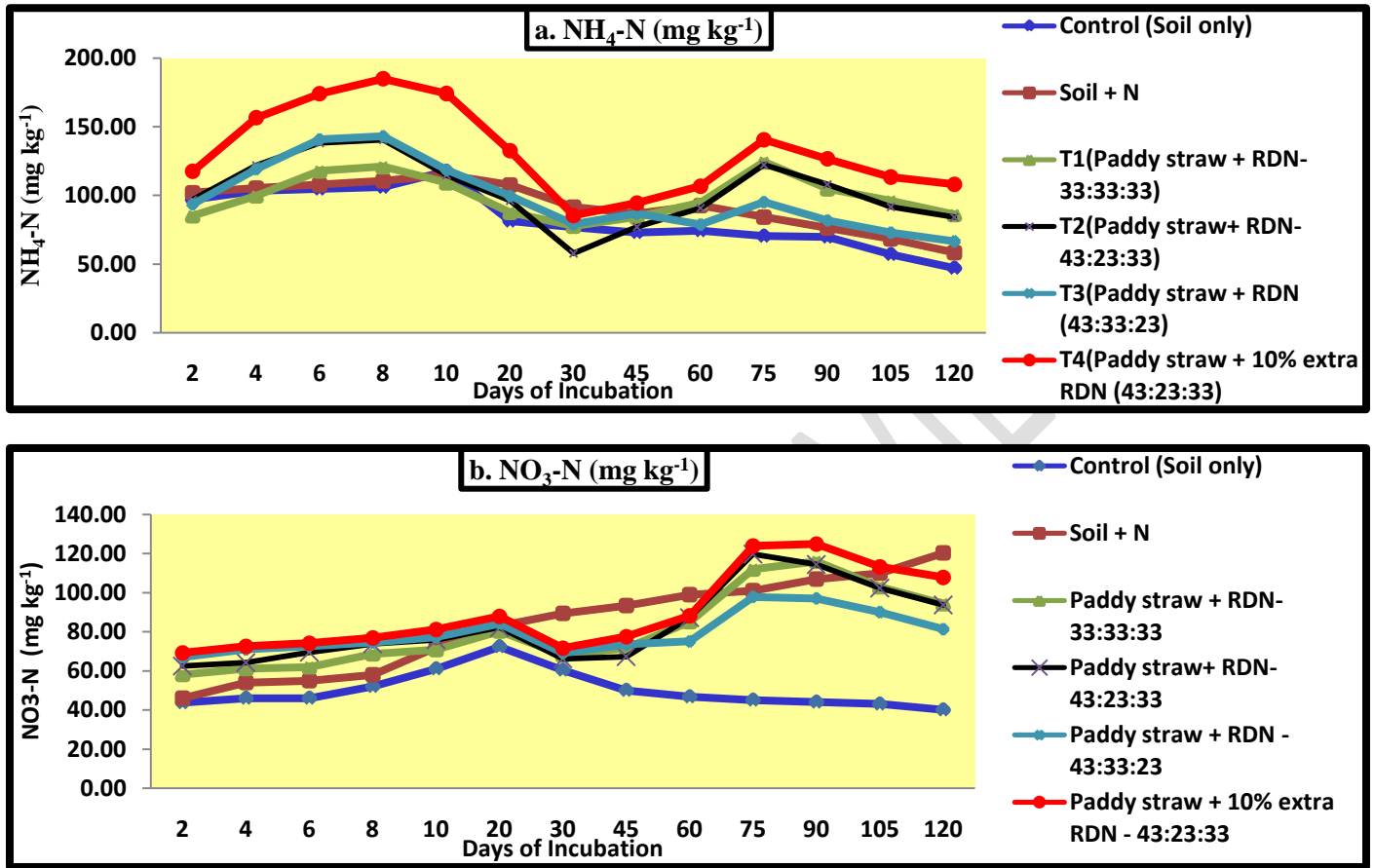
Table 3. Effect of different fertilizer doses employing paddy straw on NH_4^+ -N ($mg\ kg^{-1}$) during incubation

Treatments	DAYS OF INCUBATION												
	2	4	6	8	10	20	30	45	60	75	90	105	120
Control (T ₁)	97.00	103.33	104.67	106.00	117.67	81.33	76.67	73.00	74.33	70.33	69.67	57.00	47.00
Soil + N (T ₂)	102.00	105.33	108.00	110.67	115.00	107.78	91.67	86.67	92.67	84.33	76.33	68.33	58.33
Paddy straw + RDN-33:33:33 (T ₃)	85.27	99.80	117.93	121.00	109.27	87.73	77.70	84.23	94.83	124.50	104.87	96.17	86.17
Paddy straw+ RDN-43:23:33 (T ₄)	97.00	121.93	138.27	140.53	114.87	96.20	57.80	77.20	90.67	122.33	108.00	91.67	84.17
Paddy straw + RDN - 43:33:23 (T ₅)	93.73	119.33	140.87	143.17	118.53	99.73	79.00	86.83	78.80	95.17	81.73	72.87	66.60
Paddy straw + 10% extra RDN - 43:23:33 (T ₆)	117.60	156.60	174.13	185.00	174.23	132.57	85.47	94.53	106.83	140.67	126.67	113.47	108.13
C.D. (5 %)	5.93	8.54	8.97	12.81	8.88	6.66	6.73	5.31	5.54	4.54	5.46	4.68	4.97
SE(m) ±	1.90	2.74	2.88	4.11	2.85	2.14	2.16	1.71	1.78	1.46	1.75	1.50	1.59
SE(d)	2.69	3.88	4.07	5.82	4.03	3.02	3.05	2.41	2.51	2.06	2.48	2.13	2.25

Table 4. Effect of different fertilizer doses employing paddy straw on NO_3^- -N ($mg\ kg^{-1}$) during incubation

Treatments	DAYS OF INCUBATION												
	2	4	6	8	10	20	30	45	60	75	90	105	120
Control (T ₁)	43.67	46.00	46.00	52.00	61.00	72.33	60.33	50.00	46.67	45.00	44.00	43.00	40.00
Soil + N (T ₂)	46.00	54.00	55.00	58.00	72.00	83.00	89.33	93.33	98.99	101.00	107.00	110.00	120.33
Paddy straw + RDN-33:33:33 (T ₃)	58.13	61.17	62.00	68.67	70.83	80.33	68.17	71.67	85.13	112.00	116.00	103.00	94.33
Paddy straw+ RDN-43:23:33 (T ₄)	62.50	64.27	69.50	73.83	75.83	82.17	66.13	67.33	87.17	119.67	114.33	102.33	93.67
Paddy straw + RDN - 43:33:23 (T ₅)	67.00	71.00	72.67	74.50	77.17	84.17	69.00	73.50	75.17	97.83	97.00	90.00	81.37
Paddy straw + 10% extra RDN - 43:23:33 (T ₆)	69.17	72.50	74.17	76.83	81.17	87.83	71.50	77.50	88.17	123.83	124.83	113.17	107.83
C.D. (5 %)	4.66	4.58	4.57	3.56	3.62	2.67	3.09	5.22	7.11	4.02	5.85	7.08	4.57
SE(m) ±	1.50	1.47	1.47	1.14	1.16	0.86	0.99	1.68	2.28	1.29	1.88	2.27	1.47
SE(d)	2.11	2.08	2.07	1.62	1.64	1.21	1.40	2.37	3.23	1.83	2.65	3.21	2.07

Fig. 1 Effect of different fertilizer doses employing paddy straw on inorganic N fractions during incubation



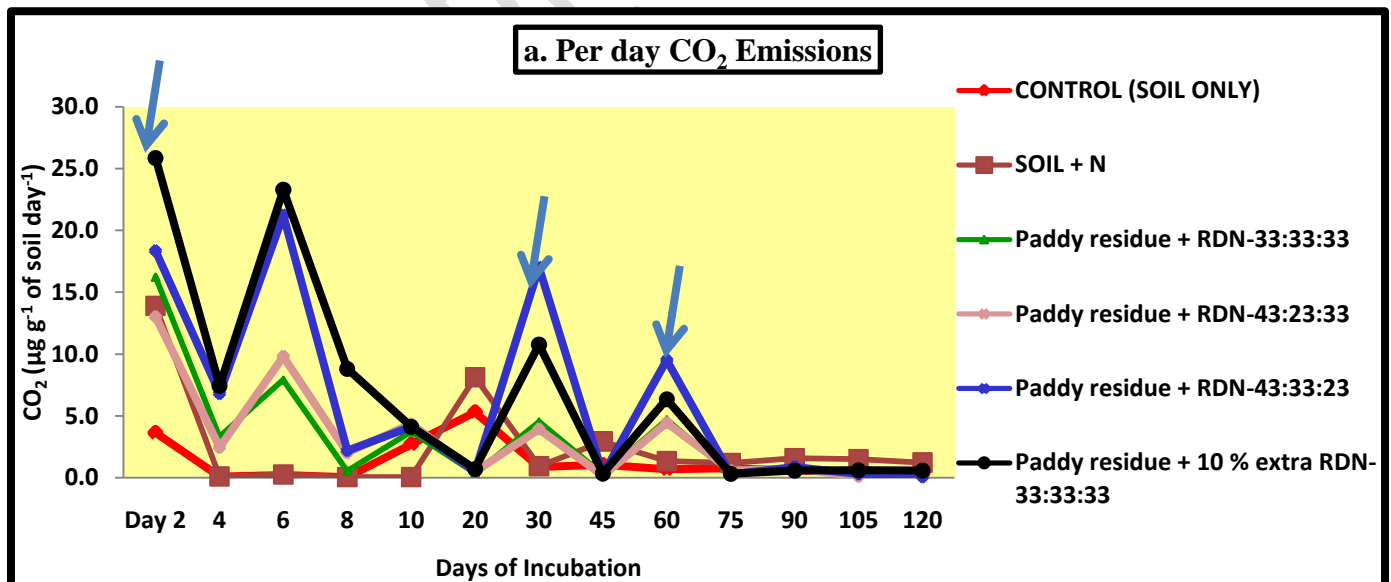
GHG emissions:

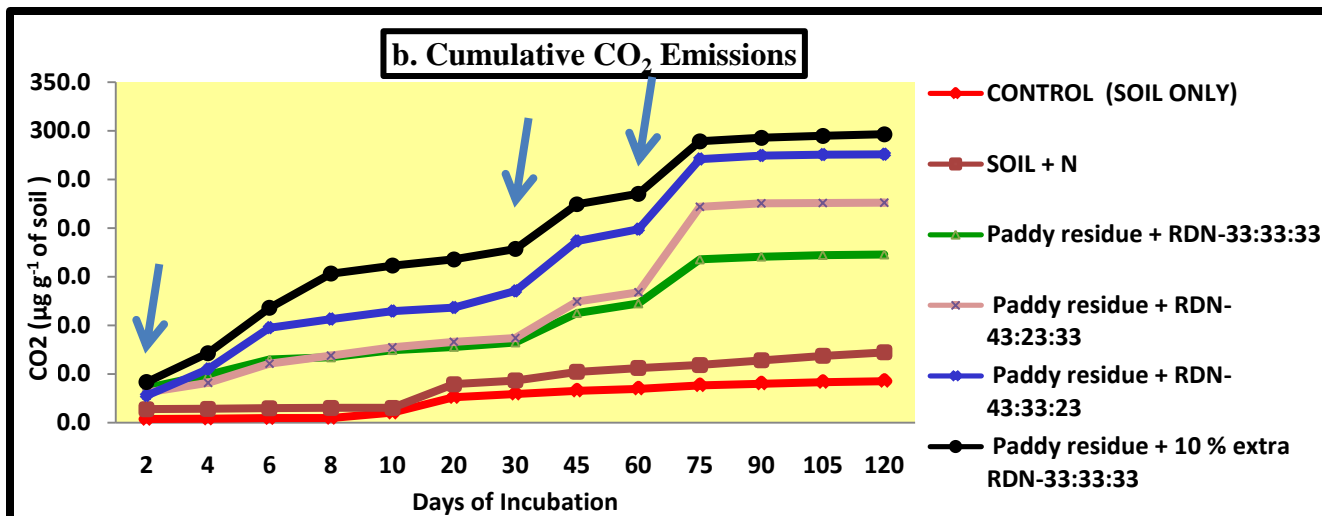
CO₂ emissions:

The data indicated that, in all the treatments, after addition of only fertilizer or fertilizer along with residue, there was increase in CO₂ emissions (Fig. 2a). CO₂ emissions decreased upto day 4, after which CO₂ emissions increased and reached peak on day 6, later CO₂ emissions decreased upto day 20. After day 20, the CO₂ emissions increased and reached peak on day 30. After day 30, upto day 45, CO₂ emissions have decreased and from day 45 to day 60, CO₂ emissions have increased and reached peak on day 60. From day 60 to day 75, CO₂ emissions decreased and almost reached a constant value upto the end of the incubation.

The cumulative CO₂ emissions (Fig. 2b) were significantly higher in paddy residue + 10 % extra RDN – 43:23:33 (T₆) i.e., 296.63 μg C g⁻¹ of soil (Table 5 and Fig. 3). The lowest cumulative CO₂ emissions were observed in control (T₁) i.e., 42.59 μg C g⁻¹ of soil. The addition of residue enhanced carbon source and energy which had boosted microbial activity and lowered soil redox potential, there by increased CO₂ emissions in all treatments containing residue. Similar results were reported by [11], who reported that, in a 100 days incubation experiment, incorporation of rice residue significantly increased soil CO₂ emissions.

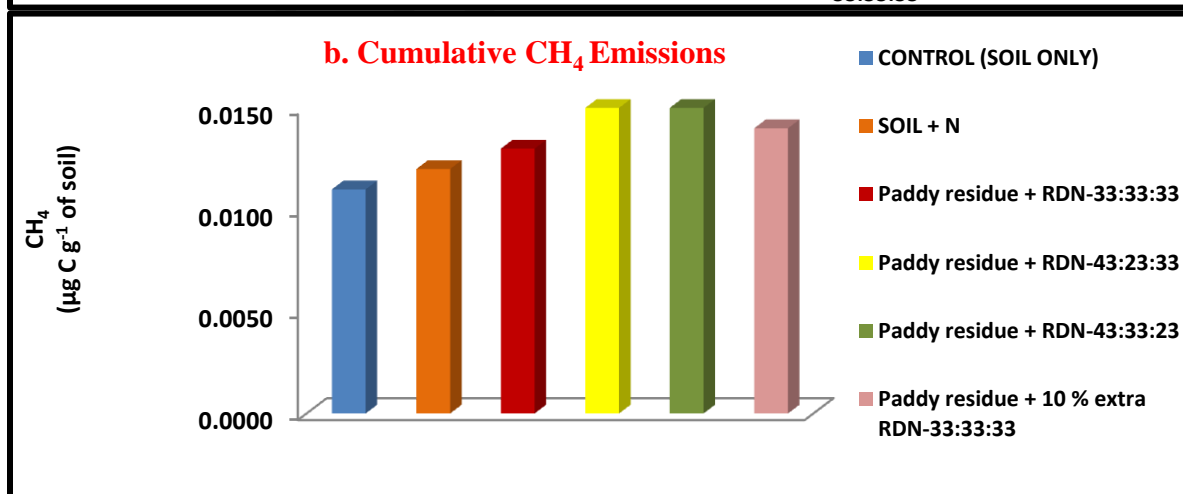
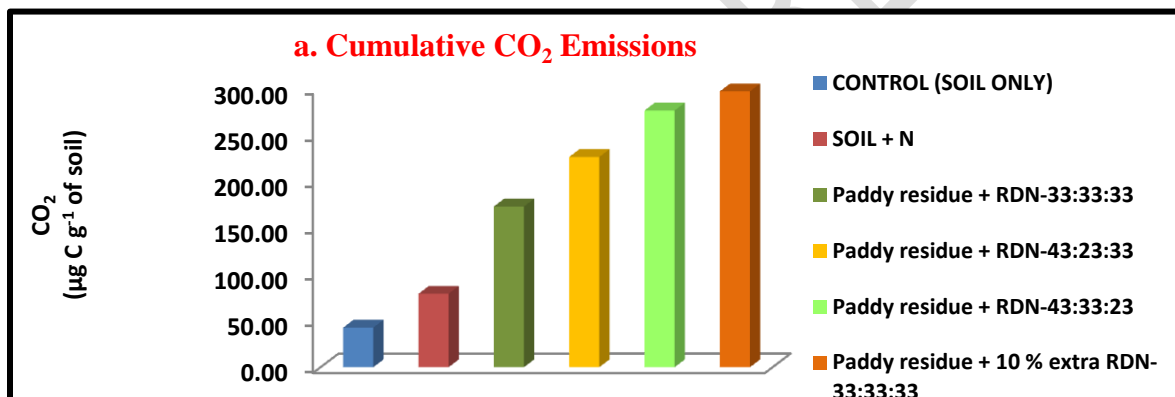
Fig. 2 Effect of different fertilizer doses employing paddy straw on CO₂ emissions during incubation

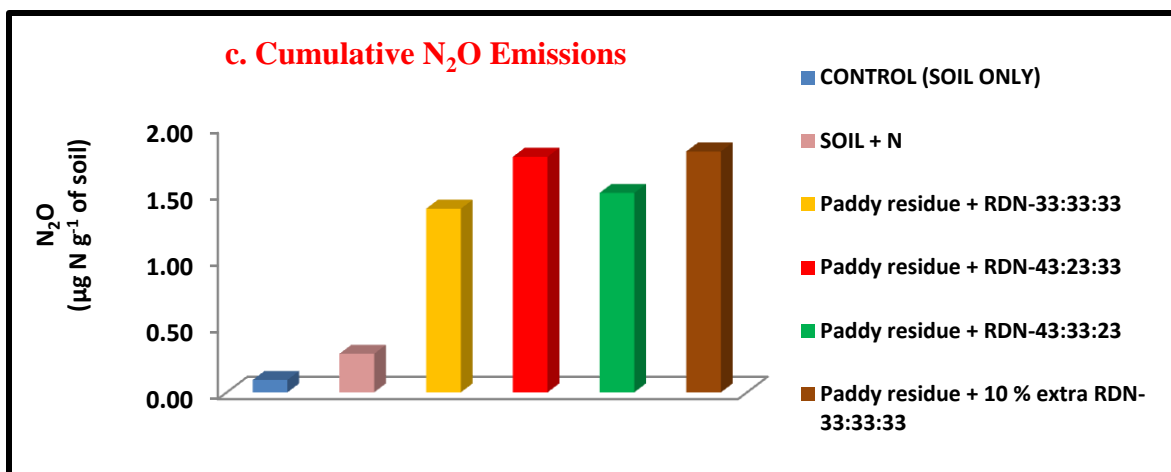




Note :Arrows indicates split application of N fertilizer

Fig. 3 Effect of different fertilizer doses employing paddy straw on cumulative emissions during incubation

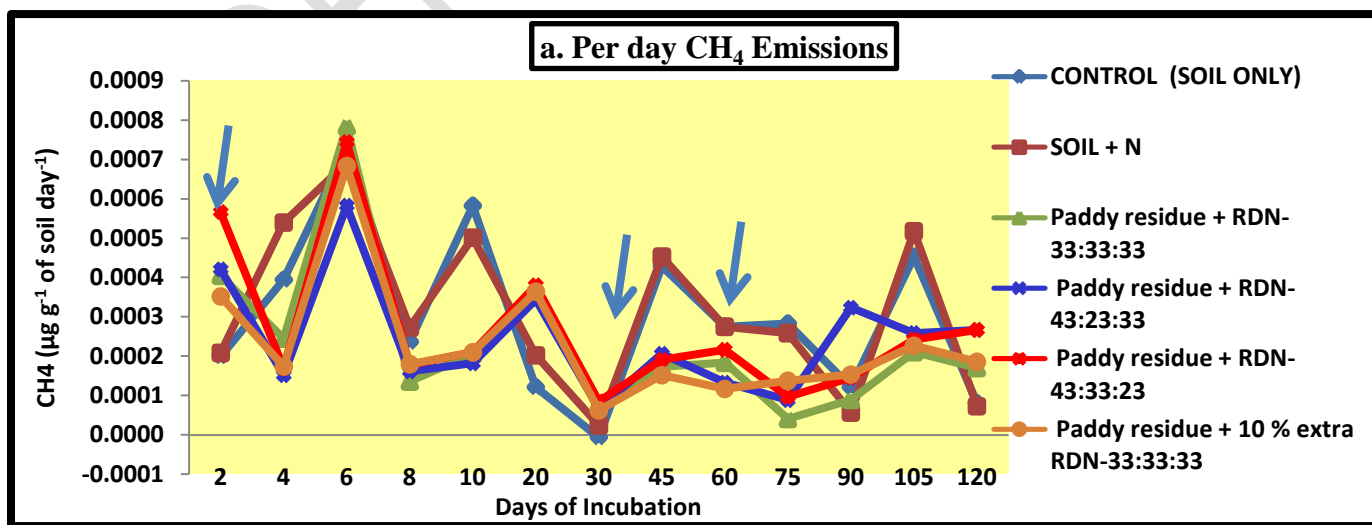


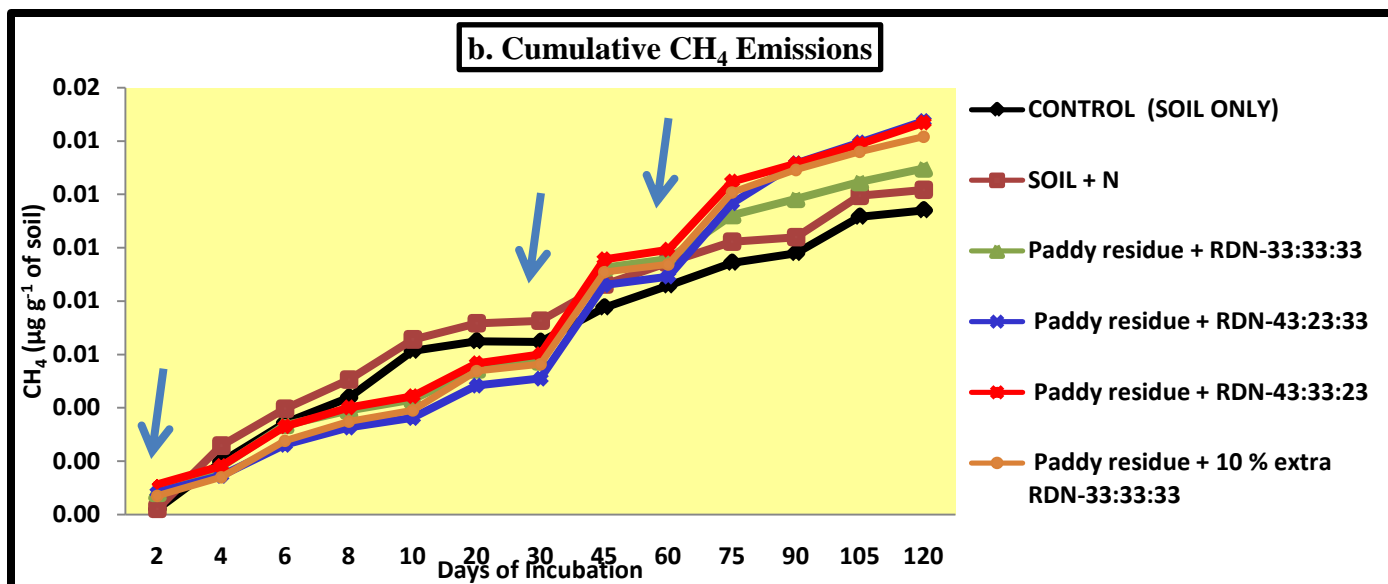


CH₄ emissions:

The methane emissions decreased from day 2 to day 4, then increased up to day 6, later decreased up to day 8 and then increased up to day 10, after which the methane emissions decreased up to day 30 (Fig. 4a). On day 30, after addition of second split, methane emissions increased and reached peak up to day 45, after which there was a decrease up to day 90, then increased up to day 105 and later methane emissions decreased up to day 120. The treatments did not differ significantly (Fig. 4b) with respect to cumulative CH₄ emissions (Table 5 and Fig. 3).

Fig. 4 Effect of different fertilizer doses employing paddy straw on CH₄ emissions during incubation





Note :Arrows indicates split application of N fertilizer

N₂O emissions:

The N₂O emissions reached peak on day 6, after which there was a decrease upto day 10 and almost reached zero from 10th day to 20th day (Fig. 5a). From day 20, there was increase in N₂O emissions upto 30th day, where it reached peak. After 30th day, there was decrease upto 45th day. From 45th day, the N₂O emissions increased and reached peak on 60th day and later it has decreased upto 120th day.

The cumulative N₂O emissions (Fig. 5b) were significantly higher in paddy residue + 10 % extra dose of N (1.81 µg N g⁻¹ of soil), followed by paddy residue + 100 % RDN (43:23:33) *i.e.*, 1.77 µg N g⁻¹ of soil. The lowest cumulative N₂O emissions were observed in control (T₁) *i.e.*, 0.09 µg N g⁻¹ of soil (Table 5 and Fig. 3).

The incorporated straw stimulated N₂O emissions by providing readily available C as an energy source for denitrifiers. Our results were in line with studies conducted by [12] and [13], who reported that residues with high C:N ratio, when incorporated into soil along with inorganic fertilizer, increased N₂O emissions via enhanced denitrification after fertilization. The increased nitrogen dose in paddy residue + 10 % extra dose of N (T₆) treatment increased the nitrogen substrate and thus increased N₂O emissions [14].

Fig. 5 Effect of different fertilizer doses employing paddy straw on N₂O emissions during incubation

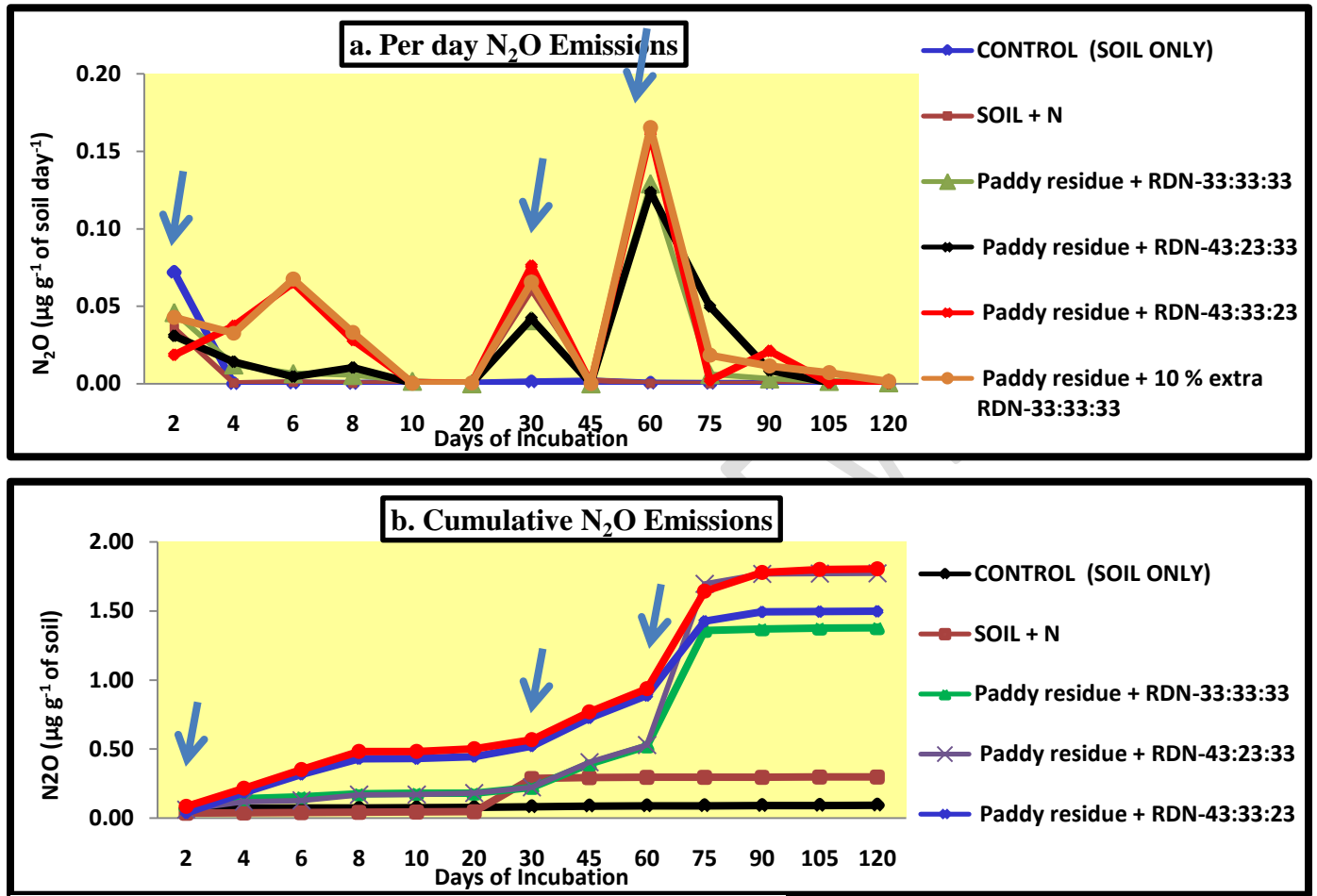


Table 5. Effect of different fertilizer doses employing paddy straw on cumulative GHG emissions during incubation

Treatment	Cumulative CO ₂ Emissions (µg C g ⁻¹ of soil)	Cumulative CH ₄ Emissions (µg C g ⁻¹ of soil)	Cumulative N ₂ O Emissions (µg N g ⁻¹ of soil)
Control (T ₁)	42.59	0.011	0.09
Soil + N (T ₂)	78.97	0.012	0.29
Paddy straw + RDN- 33:33:33 (T ₃)	172.81	0.013	1.38
Paddy straw+ RDN-43:23:33 (T ₄)	226.09	0.015	1.77
Paddy straw + RDN -43:33:23 (T ₅)	276.05	0.015	1.50
Paddy straw + 10% extra RDN - 43:23:33 (T ₆)	296.63	0.014	1.81
C.D.	9.05	NS	0.04
SE(m) ±	2.90	0.001	0.01
SE(d)	4.11	0.001	0.02

Conclusion:

Our observation showed that, from day 1 to 8, NH_4^+ -N content increased in most treatments, except control and soil + N. After application of each split dose of fertilizer, there was increase in release of NH_4^+ -N content in all the treatments. Paddy residue + 10% extra RDN - 43:23:33 treatment recorded significantly higher NH_4^+ -N content. Approximately 22.48% decrease in NH_4^+ -N content from day 75 to day 120. On day 2, paddy residue + 10% extra RDN - 43:23:33 had higher NO_3^- -N. Second split application on day 30 increased NO_3^- -N. From day 30 to 45, NO_3^- -N increased by approximately 44.79%. Third split application from day 60 to 120 showed variations among treatments, with soil + N recording the highest on day 60. Cumulative CO_2 emissions significantly higher in paddy residue + 10% extra RDN - 43:23:33, lowest was observed in control. Cumulative CH_4 emissions showed no significant differences among treatments. Cumulative N_2O emissions was significantly higher in paddy residue + 10% extra dose of N and was lowest in control. Our results suggest that, incorporation of crop residues along with inorganic fertilizer serves as best residue management practice compared to residue burning, in croplands. It increases N availability, besides improving soil fertility and decreasing GHG emissions.

REFERENCES:

1. Goswami, SB, Mondal R, Mandi SK. (2009). Crop residue management options in rice-rice system: a review. Archives of Agronomy and Soil Science. 66(9):p 1218-1234.
2. Adam John. (2013). Alternatives to open-field burning on paddy farms, Agricultural and Food Policy Studies Institute, Malaysia. 18: p1-5.
3. Dalal RC, Allen DE, Livesley SJ, Richards G. (2008). Magnitude and biophysical regulators of methane emission and consumption in the Australian agricultural, forest, and submerged landscapes: a review. Plant and Soil. 309: p 43-76.
4. Gentile R, Vanlauwe B, Van-Kessel C, Six J. (2009). Managing N availability and losses by combining fertilizer-N with different quality residues in Kenya. Agriculture Ecosystem and Environment. 131: p 308–314.
5. Chivenge PP, Murwira HK, Giller KE, Mapfumo P, Six J. (2007). Long-term impact of reduced tillage and residue management on soil carbon stabilization: Implications for conservation agriculture on contrasting soils. Soil and tillage research. 94(2): p 328-337.
6. Bremner JM. (1965). Inorganic forms of nitrogen. In: Methods of Soil Analysis, (Part – 2 (ed.) C A Black *et al.*) American Society of Agronomy, Madison, Wisconsin. 9: p1179-1237.

7. Watson RT, Zinyowera MC, Moss RH, DokkenDJ.(1996). Climate change, impacts, adaptations and mitigation of climate change. Scientific Technical Report Analyses. In: Watson, R.T., Zinyowera, M.C., Ross, R.H. (Eds.), Contribution of Working Group II to the Second Assessment Report of the Intergovernmental Panel on Climate Change. Cambridge, New York. p.880.
8. Sandeep S, Singh P, Chaudhary OP, Pathania N. (2021). Nitrogen and rice straw incorporation impact nitrogen use efficiency, soil nitrogen pools and enzyme activity in rice-wheat system in north-western India. *Field Crops Research*. p. 266:108131.
9. Yu Y, Zhao C, Zheng N, Jia H, Yao, H. (2019). Interactive effects of soil texture and salinity on nitrous oxide emissions following crop residue amendment. *Geoderma*. 337: p. 1146-1154.
10. Dong L, Si T, Li YE and Zou XX. (2021). The effect of conservation tillage in managing climate change in arid and semiarid areas—A case study in Northwest China. *Mitigation and Adaptation Strategies for Global Change*. 26(4): p. 17.
11. Guopeng ZHOU, Weidong CAO, Jinshun BA, Changxu XU, Naohua ZENG, Songjuan, GAO, Fugen DOU. (2020). Co-incorporation of rice straw and leguminous green manure can increase soil available nitrogen (N) and reduce carbon and N losses: An incubation study. *Pedosphere*.30(5): p. 661-670.
12. Li L, Han X, You M, Yuan Y, Ding X, Qiao Y. (2013). Carbon and nitrogen mineralization patterns of two contrasting crop residues in a Mollisol: Effects of residue type and placement in soils. *European Journal of Soil Biology*. 54: p. 1-6.
13. Guardia G, Tellez-Rio A, García-Marco S, Martín-Lammerding D, Tenorio JL, Ibáñez MÁ, Vallejo A. (2016). Effect of tillage and crop (cereal versus legume) on greenhouse gas emissions and Global Warming Potential in a non-irrigated Mediterranean field. *Agriculture, ecosystems & environment*. 221: p. 187-197.
14. Geng F, Li K, Liu X, Gong Y, Yue P, Li Y, Han W. (2019). Long-term effects of N deposition on N₂O emissions in alpine grasslands of Central Asia. *Catena*. 182: p. 104-108.